

# Surficial Geology

## New Portland Quadrangle, Maine

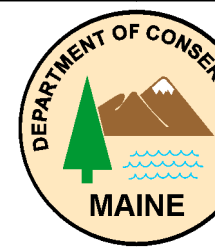
Surficial geologic mapping by  
**Carol T. Hildreth**  
**Matthew G. Jager**

Digital cartography by:  
**Susan S. Tolman**

**Robert G. Marvinney**  
State Geologist

Cartographic design and editing by:  
**Robert D. Tucker**

Funding for the preparation of this map was provided in part by the U.S. Geological Survey  
STATEMAP Program, Cooperative Agreement No. 06HQAG0026.



### Maine Geological Survey

Address: 22 State House Station, Augusta, Maine 04333  
Telephone: 207-287-2801 E-mail: mgs@maine.gov  
Home page: <http://www.maine.gov/doc/nrmc/nrmc.htm>

### Open-File No. 09-47

2009

#### SURFICIAL GEOLOGY OF MAINE

Continental glaciers like the ice sheet now covering Antarctica probably extended across Maine several times during the Pleistocene Epoch, between about 1.5 million and 10,000 years ago. The slow-moving ice superficially changed the landscape as it scraped over mountains and valleys (Figure 1), eroding and transporting boulders and other rock debris for miles (Figure 2). The sediments that cover much of Maine are largely the product of glaciation. Glacial ice deposited some of these materials, while others washed into the sea or accumulated in meltwater streams and lakes as the ice receded. Earlier stream patterns were disrupted, creating hundreds of ponds and lakes across the state. The map at left shows the pattern of glacial sediments in the New Portland quadrangle.

The most recent "Ice Age" in Maine began about 25,000 years ago, when an ice sheet spread southward over New England (Stone and Borns, 1986). During its peak, the ice was several thousand feet thick and covered the highest mountains in the state. The weight of this huge glacier actually caused the land surface to sink hundreds of feet. Rock debris frozen into the base of the glacier abraded the bedrock surface over which the ice flowed. The grooves and fine scratches (striations) resulting from this scraping process are often seen on freshly exposed bedrock, and they are important indicators of the direction of ice movement (Figure 3). Erosion and sediment deposition by the ice sheet combined to give a streamlined shape to many hills, with their long dimension parallel to the direction of ice flow. Some of these hills (drumlins) are composed of dense glacial sediment (till) plastered under great pressure beneath the ice.

A warming climate forced the ice sheet to start receding as early as 21,000 years ago, soon after it reached its southernmost position on Long Island (Sarkin, 1986). The edge of the glacier withdrew from the continental shelf east of Long Island and reached the present position of the Maine coast by 13,800 years ago (Dorion, 1993). Even though the weight of the ice was removed from the land surface, the Earth's crust did not immediately spring back to its normal level. As a result, the sea flooded much of southern Maine as the glacier retreated to the northwest. Ocean waters extended far up the Kennebec and Penobscot valleys, reaching present elevations of up to 420 feet in the central part of the state.

Great quantities of sediment washed out of the melting ice and into the sea, which was in contact with the receding glacier margin. Sand and gravel accumulated as deltas (Figure 4) and submarine fans where streams discharged along the ice front, while the finer silt and clay dispersed across the ocean floor. The shells of clams, mussels, and other invertebrates are found in the glacial-marine clay that blankets lowland areas of southern Maine. Age dates on these fossils tell us that ocean waters covered parts of Maine until about 11,000 years ago, when the land surface rebounded as the weight of the ice sheet was removed.

Meltwater streams deposited sand and gravel in tunnels within the ice. These deposits remained as ridges (eskers) when the surrounding ice disappeared (Figure 5). Maine's esker systems can be traced for up to 100 miles, and are among the longest in the country.

Other sand and gravel deposits formed as mounds (kames) and terraces adjacent to melting ice, or as outwash in valleys in front of the glacier. Many of these water-laid deposits are well layered, in contrast to the chaotic mixture of boulders and sediment of all sizes (till) that was released from dirty ice without subsequent reworking. Ridges consisting of till or washed sediments (moraines) were constructed along the ice margin in places where the glacier was still actively flowing and conveying rock debris to its terminus. Moraine ridges are abundant in the zone of former marine submergence, where they are useful indicators of the pattern of ice retreat (Figure 6).

The last remnants of glacial ice probably were gone from Maine by 10,000 years ago. Large sand dunes accumulated in late-glacial time as winds picked up outwash sand and blew it onto the east sides of river valleys, such as the Androscoggin and Saco valleys (Figure 7). The modern stream network became established soon after deglaciation, and organic deposits began to form in peat bogs, marshes, and swamps. Tundra vegetation bordering the ice sheet was replaced by changing forest communities as the climate warmed (Davis and Jacobson, 1985). Geologic processes are by no means dormant today, however, since rivers and wave action modify the land (Figure 8), and worldwide sea level is gradually rising against Maine's coast.

#### References Cited

- Davis, R. B., and Jacobson, G. L., Jr., 1985. Late-glacial and early Holocene landscapes in northern New England and adjacent areas of Canada: *Quaternary Research*, v. 23, p. 341-368.  
Dorion, C. C., 1993. A chronology of deglaciation and accompanying marine transgression in Maine: *Geological Society of America, Abstracts with Programs*, v. 25, no. 2, p. 12.  
Sarkin, L., 1986. Pleistocene stratigraphy of Long Island, New York, in Caldwell, D. W. (editor), *The Wisconsin stage of the first geological district, eastern New York*: New York State Museum, Bull. 455, p. 6-21.  
Stone, B. D., and Borns, H. W., Jr., 1986. Pleistocene glacial and interglacial stratigraphy of New England, Long Island, and adjacent Georges Bank and Gulf of Maine, in Sibrava, V., Bowen, D. Q., and Richmond, G. M. (editors), *Quaternary glaciations in the northern hemisphere: Quaternary Science Reviews*, v. 5, p. 39-52.



Figure 1: "The Bubbles" and Jordan Pond in Acadia National Park. These hills and valleys were sculpted by glacial erosion. The pond was dammed behind a moraine ridge during retreat of the ice sheet.



Figure 2: Dagget's Rock in Phillips. This is the largest known glacially transported boulder in Maine. It is about 100 feet long and estimated to weigh 8,000 tons.



Figure 3: Granite ledge in Westbrook, showing polished and grooved surface resulting from glacial abrasion. The grooves and shape of the ledge indicate ice flow toward the southeast.



Figure 4: Glaciomarine delta in Franklin, formed by sand and gravel washing into the ocean from the glacier margin. The flat delta top marks approximate former sea level. Kettle hole in foreground was left by melting of ice.

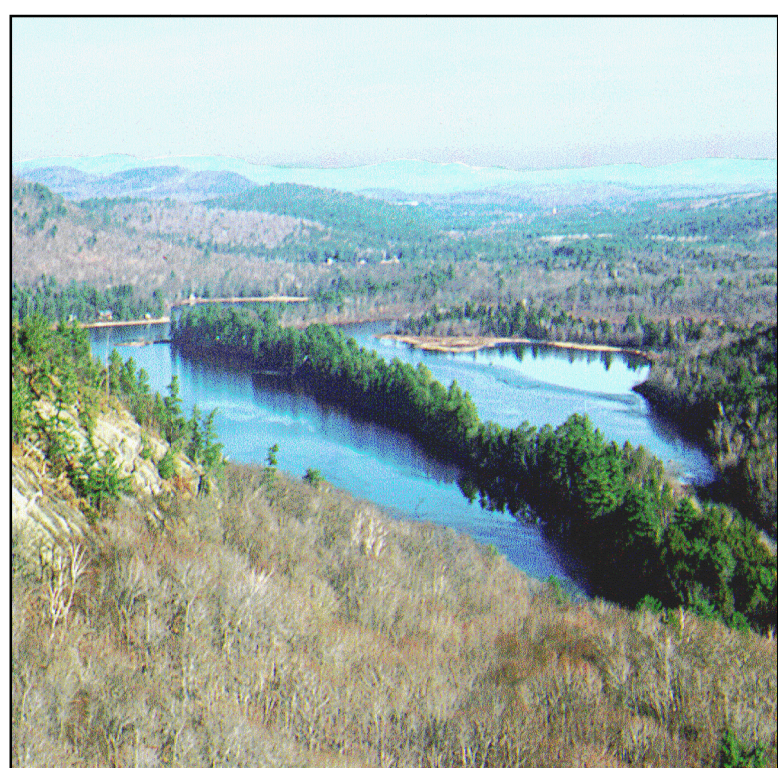


Figure 5: Esker cutting across Kezar Five Ponds, Watford. The ridge consists of sand and gravel deposited by meltwater flowing in a tunnel beneath glacial ice.



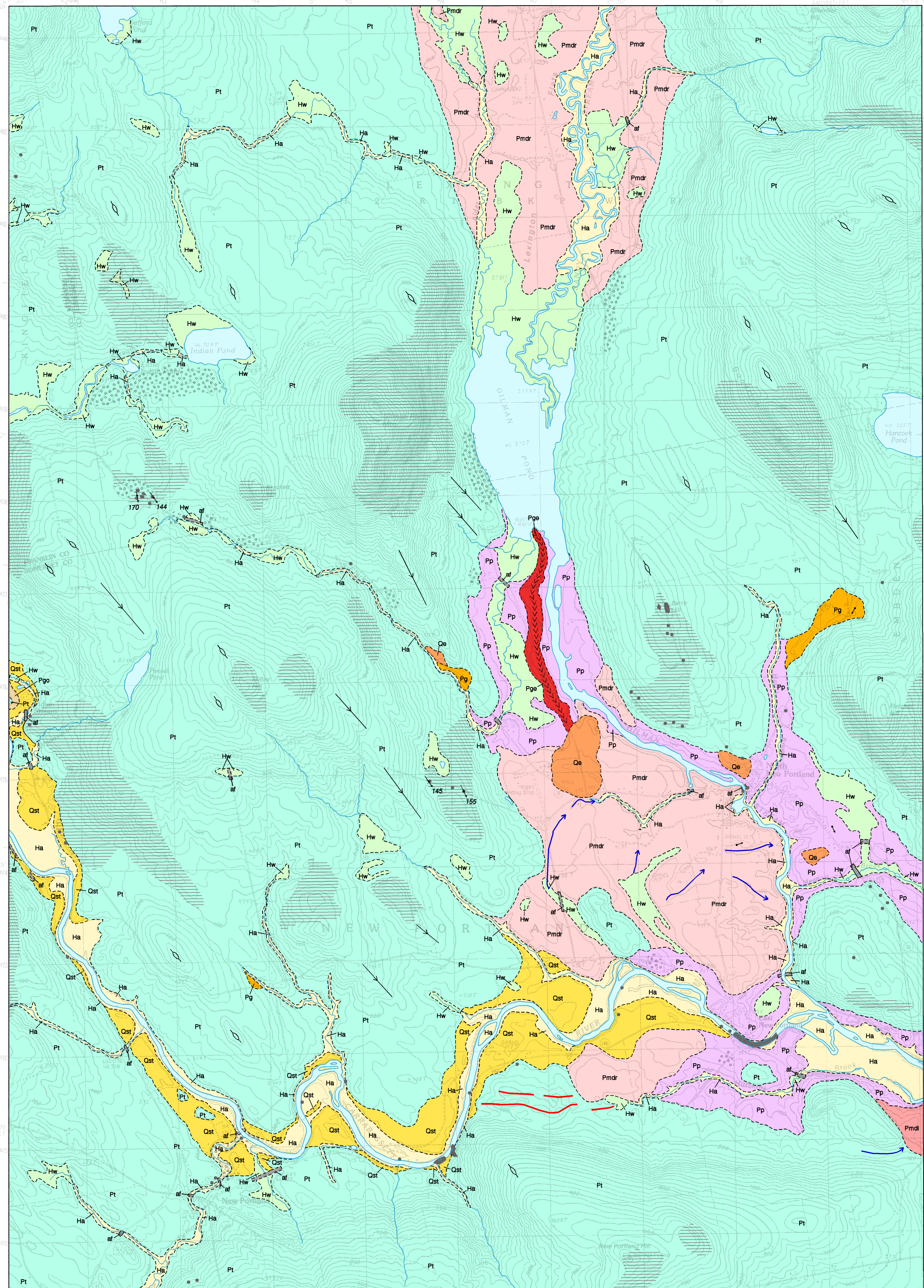
Figure 6: Aerial view of moraine ridges in blueberry field, Sedgwick (note dirt road in upper right for scale). Each bouldery ridge marks a position of the retreating glacier margin. The ice receded from right to left.



Figure 7: Sand dune in Wayne. This and other "deserts" in Maine formed as windstorms in late-glacial time blew sand out of valleys, often depositing it as dune fields on hillsides downwind. Some dunes were reactivated in historical time when grazing animals stripped the vegetation cover.

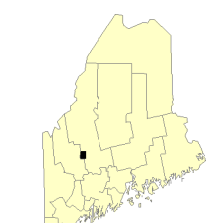


Figure 8: Songo River delta and Songo Beach, Sebago Lake State Park, Naples. These deposits are typical of geological features formed in Maine since the Ice Age.



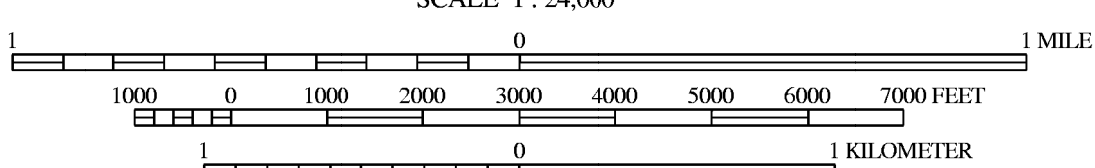
#### SOURCES OF INFORMATION

Surficial geologic mapping of the New Portland quadrangle was conducted by Carol T. Hildreth during the 2006 field season. Funding for this work was provided by the U. S. Geological Survey STATEMAP program and the Maine Geological Survey, Department of Conservation.



Quadrangle Location

SCALE 1:24,000



CONTOUR INTERVAL 20 FEET



Topographic base from U.S. Geological Survey New Portland quadrangle, scale 1:24,000 using standard U.S. Geological Survey topographic map symbols.

The use of industry, firm, or local government names on this map is for location purposes only and does not implicate responsibility for any present or potential effects on the natural resources.

**Note:** The first letter of each map unit indicates the general age of the unit:  
**H** = Holocene (postglacial deposit formed during the last 10,000 years).  
**Q** = Quaternary (deposit of uncertain age, but usually late-glacial and/or postglacial).  
**P** = Pleistocene (deposit formed during glacial to late-glacial time, prior to 10,000 years B.P. (years before present)).

**af** **Artificial fill** - Variable mixtures of surficial sediment, rock fragments, and artificial materials, transported and dumped to build up roads, lowlands, landfills, etc.

**Ha** **Stream alluvium** - Sand, gravel, silt, and organic sediment. Deposited on flood plains of modern streams. Unit may include some wetland areas (Hw). Generally corresponds to the lower terrace levels and current flood plain of the major streams in the quadrangle.

**Hw** **Freshwater wetland deposit** - Peat, muck, silt, clay, and sand. Deposited in poorly drained areas. Unit may include some stream alluvium areas (Ha).

**Qe** **Eolian deposit** - Fine- to medium-grained, well-sorted sand. Found as small dunes on a variety of older glacial deposits. Deposited after late-glacial sea level regression from the area and left many fine-grained marine sediments exposed to wind erosion and transport before vegetation established itself and anchored the deposits. More than thin dunes and blanket veneer of eolian sand are present in the area than are delineated on the map.

**Qst** **Stream terrace deposit** - Sand, gravel, silt, and occasional muck on terraces cut into glacial deposits in the Carrabassett River valley. Formed in part during late-glacial time as sea level regressed. In some places there are minimal or no Qst deposits over the underlying glacial materials where the stream terrace is primarily an erosional landform, rather than a depositional landform.

**Pmdr** **Marine delta (ice-contact)** - Coarse sand and gravel grading to sand and silt. Flat to gently sloping surface formed by glacial streams discharging into late-glacial sea. Head of delta marks an ice-marginal position, represented by ice-contact slump and faults formed as the ice margin melted away.

**Pmdr** **Regressive marine delta** - Pleistocene marine delta formed during regression of the sea due to isostatic emergence of the land. Very low-angle sand and silt forest bedding is mantled by trough cross-bedded sand, deposited by braided streams which flowed over the delta top as it prograded seaward. In places, may be mantled with unmapped thin eolian deposits.

**Pp** **Presumptive Formation** - Glaciomarine silt, clay, and sand deposited on the late-glacial sea floor. In places, material may be reworked, as sea level regressed, by wave and current action.

**Pg** **Undifferentiated ice-contact deposits** - Sand, gravel, and silt laid down within or adjacent to the ice, deposited by meltwater streams.

**Pgo** **Glacial outwash** - Sand and gravel deposited by glacial meltwater streams.

**Pgo** **Esker deposits** - Sand and gravel deposited by glacial meltwater flowing in tunnels within or beneath the ice. Chevron symbols show inferred direction of former stream flow. Buried in places by a variable thickness of glaciomarine silt, clay, and sand (Pp).

**Pt** **Till** - Light- to dark-gray nonsorted to poorly sorted mixture of clay, silt, sand, pebbles, cobbles, and boulders, a predominantly sandy diamictite containing some gravel. Generally found under most other deposits.

**Pt** **Bedrock exposures** - Not all individual outcrops are shown on the map. Gray dot indicates individual outcrops, ruled pattern indicates areas of abundant exposures and areas where surficial deposits are generally less than 3 m (10 ft) thick.

----- **Contact** - Boundary between map units. Dashed where approximately located.

↖ ↗ **Glacial striation locality** - Arrow shows ice-flow direction inferred from striations on bedrock. Dot marks point of observation. Number in (degrees) of flow direction.

→ **Direction of meltwater flow** - Channel eroded by glacial meltwater stream. Arrow shows inferred direction of water flow.

↖ ↗ **Direction of dip of cross-bedding or foreset beds** - Arrow shows average dip directions of cross-bedding or foreset beds in fluvial or deltaic deposits, which indicates direction of streamflow or delta progression. Point of observation is at dot.

~~~~~ **Esker crest** - Chevron points in inferred direction of meltwater flow.

~~~~~ **Fluted till** - Narrow ridges of till shaped by glacial ice flow.

~~~~~ **Moraine ridge** - Line shows inferred crest of moraine ridge deposited along the retreating margin of the most recent (late Wisconsinan) glacial ice sheet.

~~~~~ **Area of many large boulders**, where observed. May be more extensive than shown.

~~~~~ **Ice-margin position** - Line shows an inferred approximate position of the glacier margin during ice retreat, based on positions of meltwater channels, moraines, and/or heads of ice-contact marine delta or outwash deposits.

#### USES OF SURFICIAL GEOLOGY MAPS

A surficial geology map shows all the loose materials such as till (commonly called hardpan), sand and gravel, or clay, which overlie solid ledge (bedrock). Bedrock outcrops and areas of abundant bedrock outcrops are shown on the map, but varieties of the bedrock are not distinguished (refer to bedrock geology map). Most of the surficial materials are deposits formed by glacial and deglacial processes during the last stage of continental glaciation, which began about 25,000 years ago. The remainder of the surficial deposits are the products of postglacial geologic processes, such as river floodplains, or are attributed to human activity, such as fill or other land-modifying features.

The map shows the areal distribution of the different types of glacial features, deposits, and landforms as described in the map explanation. Features such as striations and moraines can be used to reconstruct the movement and position of the glacier and its margin, especially as the ice sheet melted. Other ancient features include shorelines and deposits of glacial lakes or the glacial sea, now long gone from the state. This glacial geologic history of the quadrangle is useful to the larger understanding of past earth climate, and how our region of the world underwent recent geologically significant climatic and environmental changes. We may then be able to use this knowledge in anticipation of future similar changes for long-term planning efforts, such as coastal development or waste disposal.

Surficial geology maps are often best used in conjunction with related maps such as surficial materials maps or significant sand and gravel aquifer maps for anyone wanting to know what lies beneath the land surface. For example, these maps may aid in the search for water supplies, or economically important deposits such as sand and gravel for aggregate or clay for bricks or pottery. Environmental issues such as the location of a suitable landfill site or the possible spread of contaminants are directly related to surficial geology. Construction projects such as locating new roads, excavating foundations, or siting new homes may be better planned with a good knowledge of the surficial geology of the site. Refer to the list of related publications below.

#### OTHER SOURCES OF INFORMATION

- Hildreth, C. T., and Locke, D. B., 2007. Surficial materials of the New Portland quadrangle, Maine: Maine Geological Survey, Open-File Map 07-72.
- Lewis, E. B., Locke, D. B., and Neil, C. D., 2009. Significant sand and gravel aquifers of the New Portland quadrangle, Maine: Maine Geological Survey, Open-File Map 09-53.
- Jager, M. G., 1996. Deglaciation of the lower Carrabassett River valley drainage, Maine: M.S. thesis, University of Maine, Orono, Maine, 137 p.
- Thompson, W. B., 1979. Surficial geology handbook for coastal Maine: Maine Geological Survey, 68 p. (out of print).
- Thompson, W. B., and Borns, H. W., Jr., 1985. Surficial geologic map of Maine: Maine Geological Survey, scale 1:500,000.