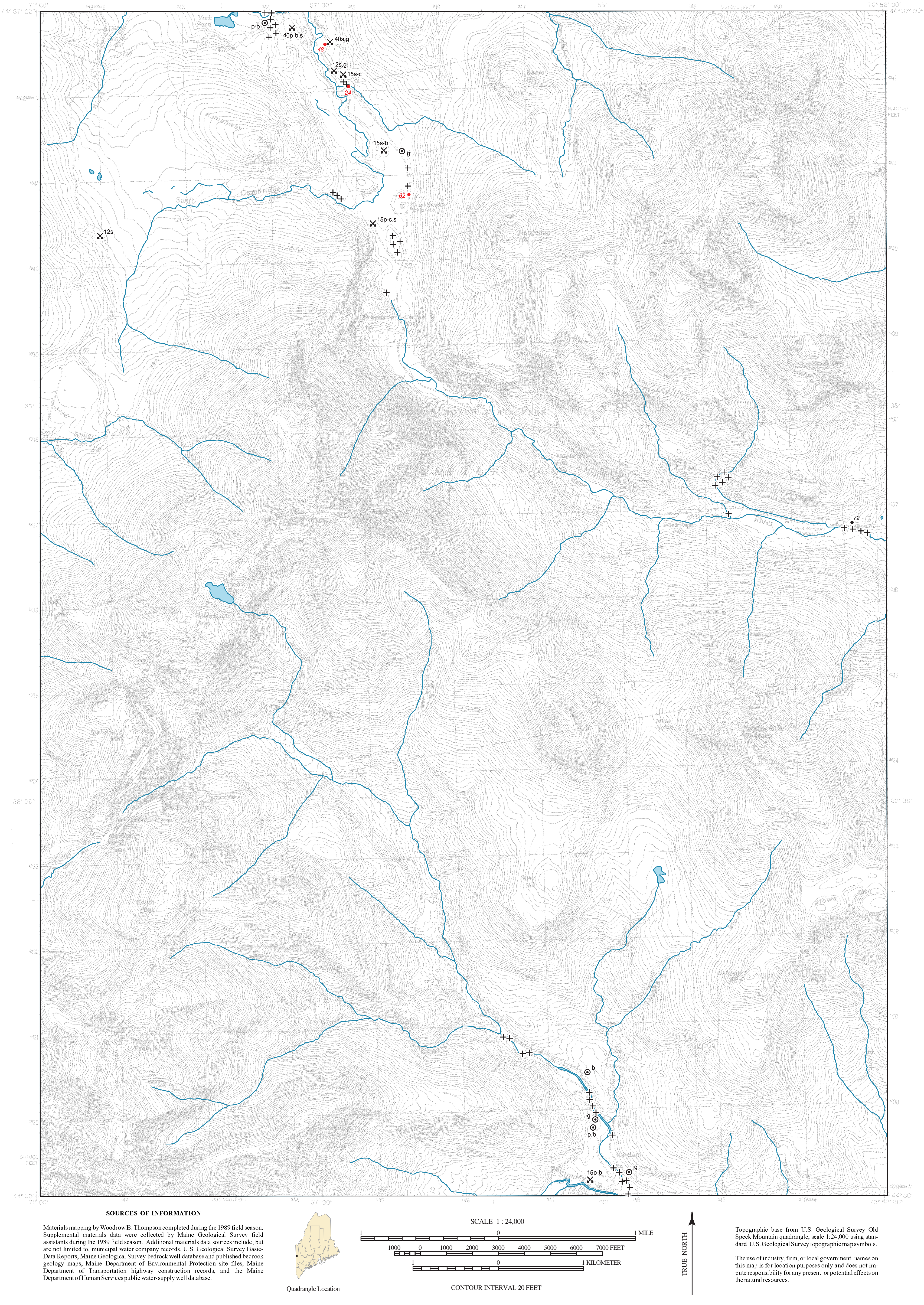


Surficial Materials



Old Speck Mountain Quadrangle, Maine

Surficial materials mapping by  
**Woodrow B. Thompson**

Digital cartography by:  
**Michael E. Foley**

Robert G. Marvinney  
State Geologist

Cartographic design and editing by:  
**Robert D. Tucker**

Funding for the preparation of this map was provided in part by the  
U. S. Geological Survey.

**Maine Geological Survey**  
Address: 22 State House Station, Augusta, Maine 04333  
Telephone: 207-287-2801 E-mail: mgs@maine.gov  
Home page: http://www.maine.gov/doc/nrimc/nrimc.htm

**Open-File No. 01-187**  
**2001**  
**SUPERSEDED**

SURFICIAL MATERIALS

Uses of Materials Maps

The data shown here may be used for a variety of purposes by landowners, planners, teachers, or anyone else wanting to know what lies beneath the land surface. For example, it may aid in the search for economically important deposits such as sand and gravel for aggregate or clay for bricks or pottery. Environmental issues such as the location of a suitable landfill site or the possible spread of contaminants are directly related to surficial materials information. Construction projects such as locating new roads, excavating foundations and utility lines, or siting new homes are also important uses of materials data.

Surficial materials maps are often best used in conjunction with related maps such as surficial geology maps or significant sand and gravel aquifer maps. Refer to the list of related publications below at left.

Photographs

The photos below are examples of the various material sizes as they are observed in the field. The photo captions describe the materials and give the abbreviations used to represent them on the map at left. Inspection of the photos will give the map user a better sense of what the map units mean. Note especially the photos at the bottom of the page. These photos show interbedded layers of materials as they may often be seen in the field. Materials in a gravel pit are rarely all a single size, and these examples show their possible complexity.



**Till over bedrock:** d(t)/rk -- Road cut on Route 17 in Township D, showing thin layer of till overlying glacially eroded bedrock. Dark streaks on the rock face are wet areas.



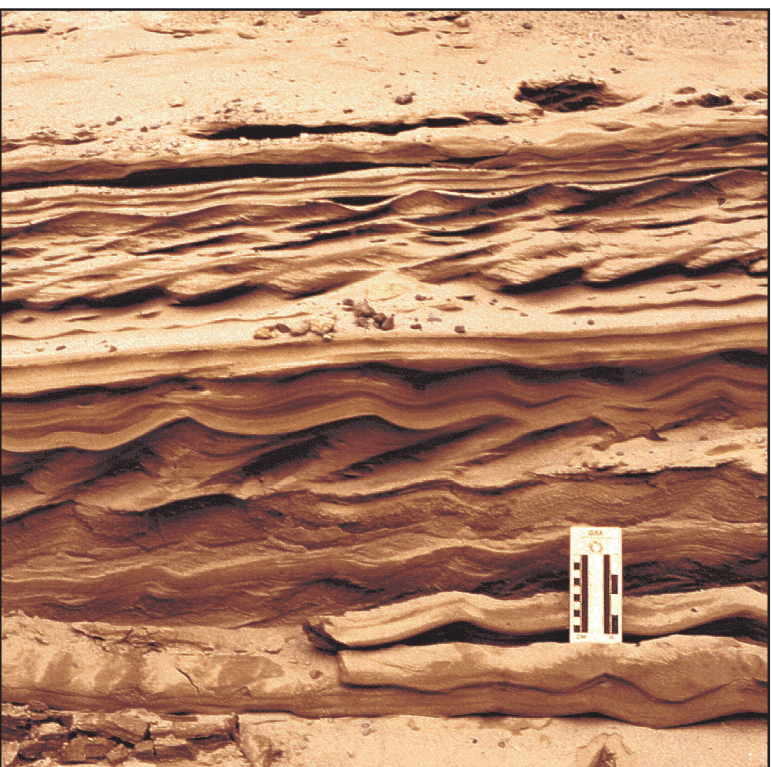
**Till:** ds(t) -- Borrow pit near Millinocket, exposing sandy, bouldery till. This stony till commonly occurs in areas of granitic bedrock.



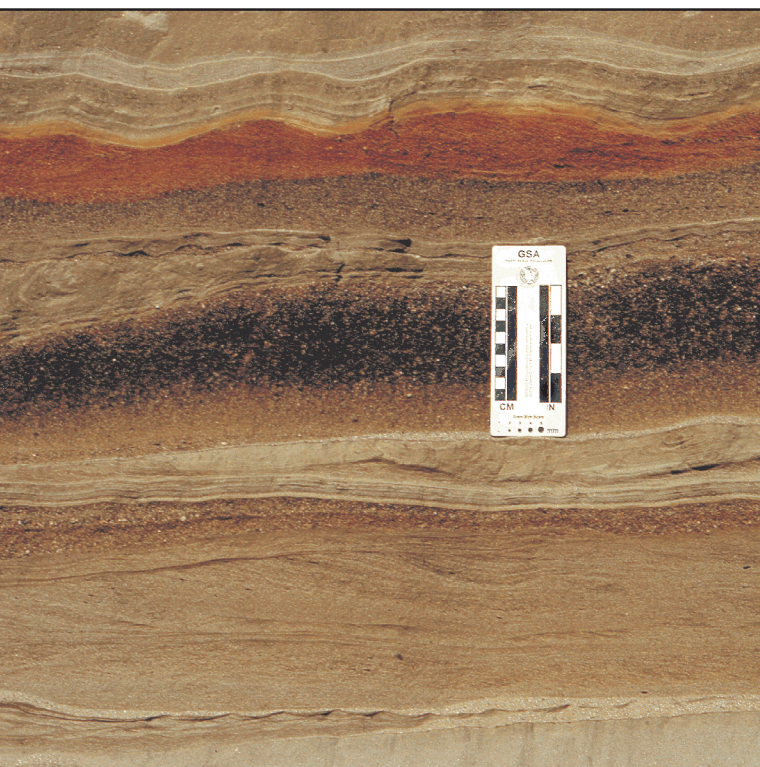
**Clayey silt over sand with pebble-cobble gravel:** st,cy/s,p,c -- Borrow pit in Kennebec River valley, Pittston, showing glaciomarine sealloor mud (Presumpscot Formation) overlying sand and gravel deposited in submarine fan at glacier margin.



**Clay-silt:** cy-st -- Coastal bluff in Brunswick, exposing a thick section of well-stratified glaciomarine sealloor mud (Presumpscot Formation).



**Sand:** s -- Close-up of pit face in glaciomarine delta west of Dolby Pond, Millinocket, showing current ripples in sandy delta foreset beds. Scale card is graduated in centimeters and inches.



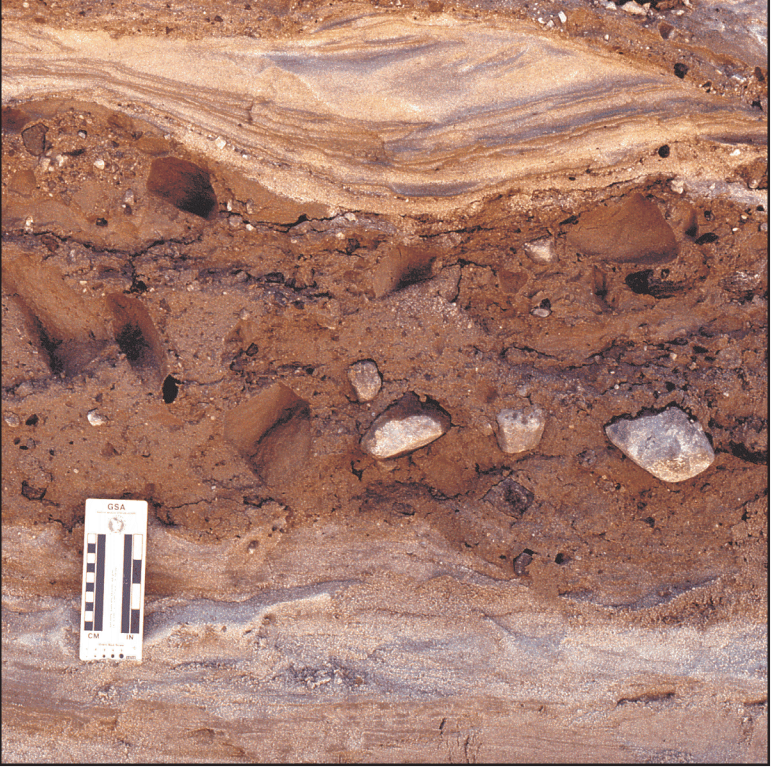
**Sand (ranging from very fine-grained to very coarse):** vfs-vcs -- Close-up of pit face in well-stratified sand beds deposited in glacial lake at lower end of Bear River valley, Newry.



**Pebble to cobble gravel:** p-c -- Pit in upper part of glaciomarine delta in Norridgecock, Kennebec River valley, showing massive gravel deposited by meltwater streams flowing across the delta top.



**Pebble to boulder gravel (fossiliferous) over gravelly sand:** p-b(f)/gs -- Close-up of pit face in marine nearshore deposit with fossil shells and barnacle-encrusted stones.



**Sand with interbedded flowtill:** s ∓ ds(tf) -- Close-up of pit face in an end-moraine, Westbrook, showing part of a stony flowtill lens (center) deposited where a glacier margin terminated in the sea.



**Gravel over sand over gravel:** p-c/s/p-c -- Close-up of pit face showing intertidal(?) sand unit between pebble-cobble gravel beds in upper part of glaciomarine delta, Columbia Falls.

This map shows the textures of surficial sediments in the quadrangle, independent of interpretations regarding their origin. For example, poorly sorted sediments deposited directly from glacial ice are shown here as "diamiction," although they may be genetically classified as "till."

The symbols listed below indicate materials observed in borrow pits and other surface exposures, as well as subsurface data from various sources. Where more than one textural class is present, materials are separated by commas and listed in decreasing order of abundance (e.g., s, st, cy). Individual materials may occur in distinct layers, or they may be mixed. Hyphens show the ranges of particle sizes present where their relative abundances are uncertain (e.g., st-c). Slash marks indicate superposition of materials. Numbers are observed thicknesses in feet (e.g., 10s/3cy) and in many cases do not indicate the thickness of surficial materials that may exist at greater depths. "vcs" indicates a significant stratigraphic sequence of interbedded materials. Not all symbols will necessarily be found on the map.

GRAVEL	g	Undifferentiated gravel, used as a general term. Can be subdivided by size as follows:	
		b	Boulder gravel >256 mm (10")
		c	Cobble gravel 64-256 mm (2.5-10")
		p	Pebble gravel 2-64 mm (0.125-2.5")
MIXED UNITS	gs	Gravelly sand (this is a special case for sand with lesser amounts of intermixed gravel, i.e. pebbly sand, cobbly sand, or bouldery sand)	
	sg	Sand and gravel (used only to describe slumped face or other site where relative abundances of sand vs. gravel are unknown)	
SAND	s	Undifferentiated sand, used as a general term. Can be subdivided by size as follows:	
		vcs	Very coarse sand (1-2 mm)
		cs	Coarse sand (0.5-1 mm)
		ms	Medium sand (0.25-0.5 mm)
		fs	Fine sand (0.125-0.25 mm)
		vfs	Very fine sand (0.0625-0.125 mm)
SILT	st	Silt (0.002-0.0625 mm)	
CLAY	cy	Clay (<0.002 mm)	

DIAMICTON	d	Undifferentiated diamiction (poorly-sorted sediment in which particle sizes may range from clay to boulders). Used as a general term or subdivided as follows:	
		dg	Gravelly-matrix diamiction
		ds	Sandy-matrix diamiction
		dt	Silty-matrix diamiction
		dy	Clayey-matrix diamiction
OTHER MATERIALS	og	Organic-rich sediment (can be any organic material, including forest litter, wood, shells, etc.)	
		pt	Peat (reserved for actual fibrous peat)
		af	Artificial fill (e.g. road fills, building sites, dumps)
		bd	Scattered boulders; interpreted as till where followed by (t)
		rk	Bedrock (observed in pit floor, boring, or natural exposure)
		rs	Rottenstone, disintegrated or weathered bedrock, saprolite,
		u	Unknown (material unidentified)
		R	Refusal (in test boring or well)
		(f)	Fossiliferous (used to indicate fossiliferous units within a sequence)

- 8s-b Materials data from shovel hole, hand-dugger hole, natural exposure, or excavation (other than borrow pit).
- 56 Depth to bedrock from well (≥ is used to indicate minimum depth to bedrock), in feet below land surface.
- Bedrock well
- Drilled overburden well
- Dug well
- Driven point
- 20fs,st Observation well with materials data
- 10gs/rk Test boring with materials data
- s-b Borrow pit, recently active at time of mapping, with materials data.
- s-p Borrow pit, evidently abandoned or in long disuse at time of mapping, with materials data where noted in remaining exposures. This symbol also indicates pits that have been reclaimed and no longer exist, but their former locations are evident from earlier reconnaissance work, air photos, or county soils maps published by the U. S. Department of Agriculture.
- Quarry
- Location of site for which a data sheet is on file at the Maine Geological Survey.
- 56 Depth to bedrock from seismic line, in feet below land surface
- Bedrock outcrop

OTHER SOURCES OF INFORMATION

- Caldwell, D. W., 1975, Reconnaissance surficial geology of the Old Speck Mountain 15' quadrangle, Maine: Maine Geological Survey, Open-File Map 75-15.
- Foster, L. E., Lewis, E. B., and Neil, C. D. (compilers), 2001, Significant sand and gravel aquifers in the Old Speck Mountain quadrangle, Maine: Maine Geological Survey, Open-File Map 01-186.
- Thompson, W. B., 1979, Surficial geology handbook for coastal Maine: Maine Geological Survey, 68 p. (out of print)
- Thompson, W. B., and Borns, H. W., Jr., 1985, Surficial geologic map of Maine: Maine Geological Survey, scale 1:500,000.