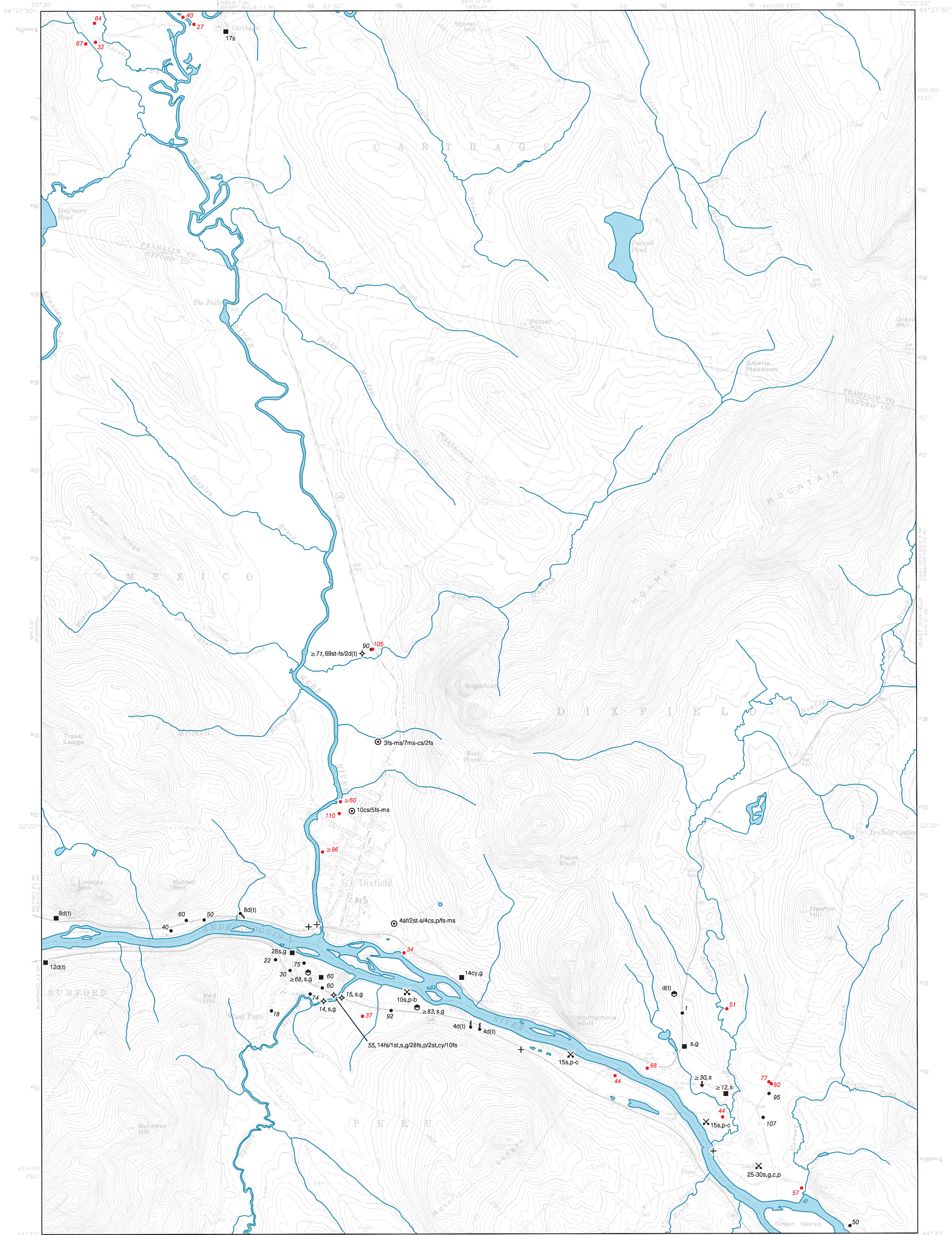


# Surficial Materials

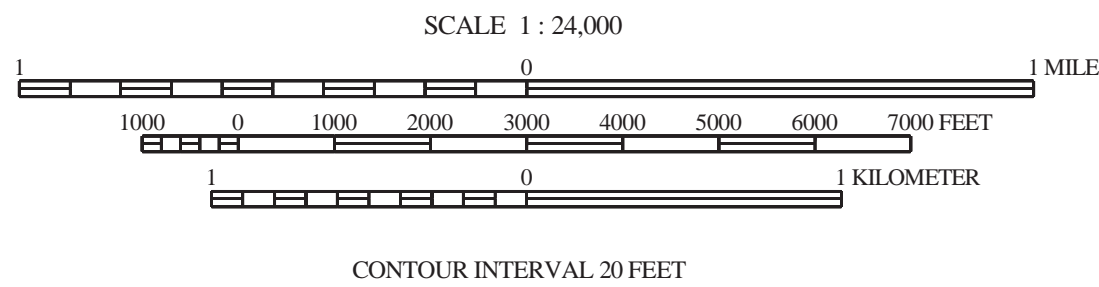


## SOURCES OF INFORMATION

Materials mapping by Glenn C. Prescott, Jr. completed during the 1989 field season. Supplemental materials data were collected by Maine Geological Survey field assistants during the 1989 field season. Additional materials data sources include, but are not limited to, municipal water company records, U.S. Geological Survey Basic-Data Reports, Maine Geological Survey bedrock well database and published bedrock geology maps, Maine Department of Environmental Protection site files, Maine Department of Transportation highway construction records, and the Maine Department of Human Services public water supply well database.



Quadrangle Location



SCALE 1 : 24,000

CONTOUR INTERVAL 20 FEET

Topographic base from U.S. Geological Survey Dixfield quadrangle, scale 1:24,000 using standard U.S. Geological Survey topographic map symbols.

The use of industry, firm, or local government names on this map is for location purposes only and does not implicate responsibility for any present or potential effects on the natural resources.

## DIAMICTON

**d** Undifferentiated diamicton (poorly-sorted sediment in which particle sizes may range from clay to boulders). Used as a general term or subdivided as follows:

- dg** Gravely-matrix diamicton
- ds** Sandy-matrix diamicton
- dt** Silty-matrix diamicton
- dy** Clayey-matrix diamicton

**Note:** Diamictons of glacial origin may be classified as one of the following varieties of till (shown on the map in parentheses):

- t** Till, undifferentiated. Usually of late Wisconsinan age (deposited by the last glacial ice sheet).
- ta** Ablation till. Deposited during retreat of the late Wisconsinan ice sheet. Typically sandy, stony, and not very compact.
- tl** Lodgment till. Inferred to have been deposited at the base of the late Wisconsinan ice sheet. Usually very compact.
- tf** Flowtill. Deposited by slumping adjacent to glacial ice.
- T** Variably weathered till (usually a lodgment facies) of inferred pre-late Wisconsinan age.

## ORGANIC MATERIALS

- og** Organic-rich sediment (can be any organic material, including forest litter, wood, shells, etc.)
- pt** Peat (reserved for actual fibrous peat)

## OTHER MATERIALS

- af** Artificial fill (e.g. road fills, building sites, dumps)
- bd** Scattered boulders; interpreted as till where followed by (t)
- rk** Bedrock (observed in pit floor, boring, or natural exposure)
- rs** Rottenstone, disintegrated or weathered bedrock, saprolite,
- u** Unknown (material unidentified)
- R** Refusal (in test boring or well)
- (f)** Fossiliferous (used to indicate fossiliferous units within a sequence).

## GRAVEL

**g** Undifferentiated gravel, used as a general term. Can be subdivided by size as follows:

- b** Boulder gravel (>256 mm (10"))
- c** Cobble gravel (64-256 mm (2.5-10"))
- p** Pebble gravel (2-64 mm (0.1-2.5"))

## MIXED UNITS

- gs** Gravely sand (this is a special case for sand with lesser amounts of intermixed gravel, i.e. pebbly sand, cobbly sand, or bouldery sand)
- sg** Sand and gravel (used only to describe slumped face or other site where relative abundances of sand vs. gravel are unknown).

## SAND

**s** Undifferentiated sand, used as a general term. Can be subdivided by size as follows:

- vs** Very coarse sand (1-2 mm)
- cs** Coarse sand (0.5-1 mm)
- ms** Medium sand (0.25-0.5 mm)
- fs** Fine sand (0.125-0.25 mm)
- vs** Very fine sand (0.0625-0.125 mm)

## SILT

**st** Silt (0.002-0.0625 mm)

## CLAY

**cy** Clay (<0.002 mm)

## OTHER SOURCES OF INFORMATION

- Thompson, W. B. (compiler), 1987, Reconnaissance surficial geology of the Lewiston 1 x 2-degree quadrangle, Maine: Maine Geological Survey, Open-File Map 87-7.
- Foster, L. E., Lewis, E. B., and Neil, C. D. (compilers), 2001, Significant sand and gravel aquifers in the Dixfield quadrangle, Maine: Maine Geological Survey, Open-File Map 01-49.
- Thompson, W. B., 1979, Surficial geology handbook for coastal Maine: Maine Geological Survey, 68 p. (out of print)
- Thompson, W. B., and Borns, H. W., Jr., 1985, Surficial geologic map of Maine: Maine Geological Survey, scale 1:500,000.

## Dixfield Quadrangle, Maine

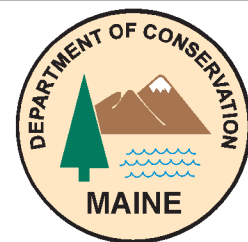
Surficial materials mapping by  
**Glenn C. Prescott, Jr.**

Digital cartography by:  
**Michael E. Foley**

**Robert G. Marvinney**  
State Geologist

Cartographic design and editing by:  
**Robert D. Tucker**

Funding for the preparation of this map was provided in part by the  
U. S. Geological Survey.



## Maine Geological Survey

Address: 22 State House Station, Augusta, Maine 04333  
Telephone: 207-287-2801 E-mail: mgs@maine.gov  
Home page: <http://www.maine.gov/doc/nrmc/nrmc.htm>

Open-File No. 01-50

2001

**SUPERSEDED**

## SURFICIAL MATERIALS

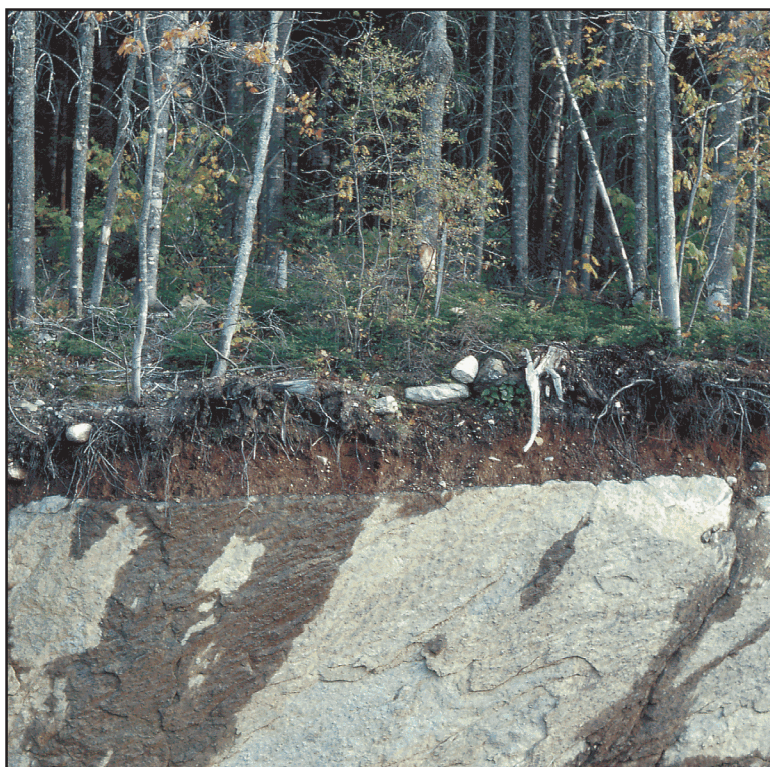
### Uses of Materials Maps

Geologic processes such as weathering and erosion break bedrock down into smaller particles of sediment. Sediments such as clay, silt, sand, gravel, and other loose deposits which lie on top of bedrock are grouped together in the general category of "surficial materials." These materials are not soils; they are the deeper earth materials that lie between the soil zone and the underlying bedrock. Soils commonly develop by weathering of the uppermost part of these materials.

### Mapping Surficial Materials

When mapping the surficial geology or the extent of sand and gravel aquifers in a quadrangle, a geologist first makes observations about the surficial materials at a network of points throughout the area. These points of observation may be auger holes, road cuts, gravel pits, stream cuts, or other places where sediments are visible. The geologist describes the materials at each location using the size abbreviations shown in the explanation below the map at left. Sedimentary materials range in particle size from clay (<0.002 mm) to boulders (>256 mm or 10"). The observation points are plotted on the quadrangle and the resulting surficial materials map shows what is known about the distribution, thickness, and texture of sediments in the area.

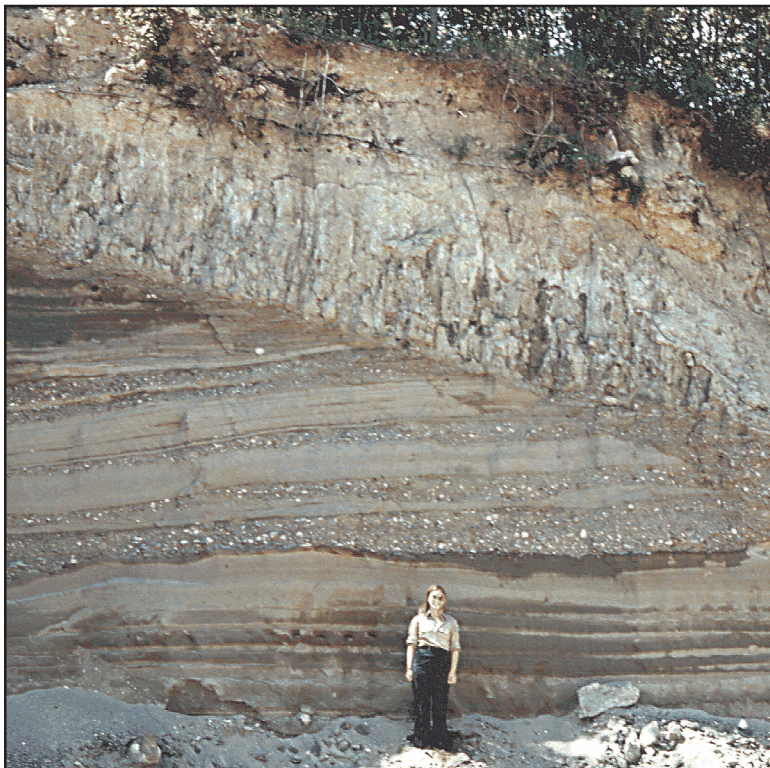
By combining materials data with well and test hole data, seismic studies, other published information, and analysis of aerial photographs, the geologist then interprets the pattern of these materials to create a geologic map.



**Till over bedrock:** d(t)/rk -- Road cut on Route 17 in Township D, showing thin layer of till overlying glacially eroded bedrock. Dark streaks on the rock face are wet areas.



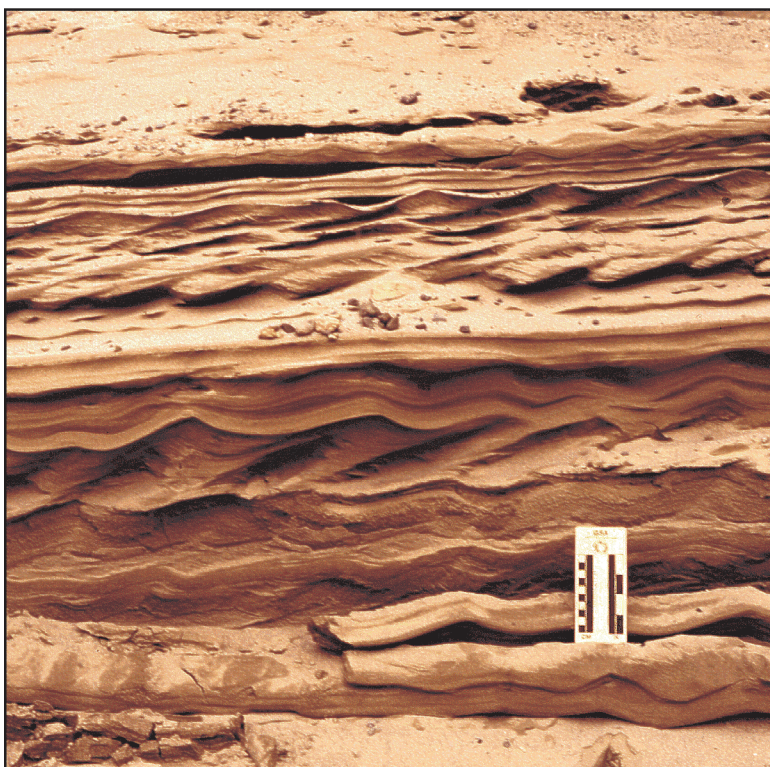
**Till:** ds(t) -- Borrow pit near Millinocket, exposing sandy, bouldery till. This stony till commonly occurs in areas of granitic bedrock.



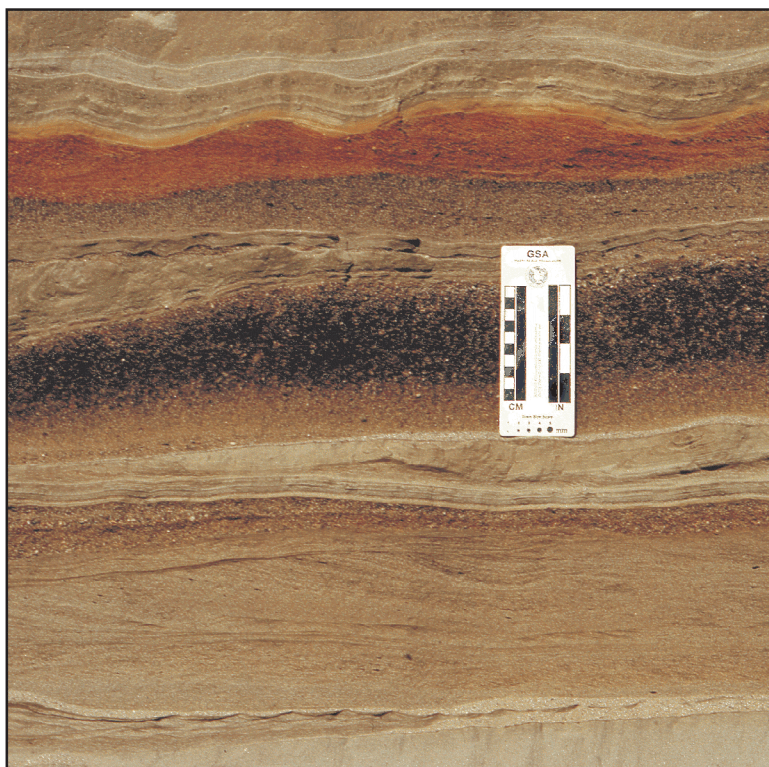
**Clayey silt over sand with pebble-cobble gravel:** st, cy/s, p, c -- Borrow pit in Kennebec River valley, Pittston, showing glaciomarine seafloor mud (Presumpscot Formation) overlying sand and gravel deposited in submarine fan at glacier margin.



**Clay-silt:** cy-st -- Coastal bluff in Brunswick, exposing a thick section of well-stratified glaciomarine seafloor mud (Presumpscot Formation).



**Sand:** s -- Close-up of pit face in glaciomarine delta west of Dolby Pond, Millinocket, showing current ripples in sandy delta foreset beds. Scale card is graduated in centimeters and inches.



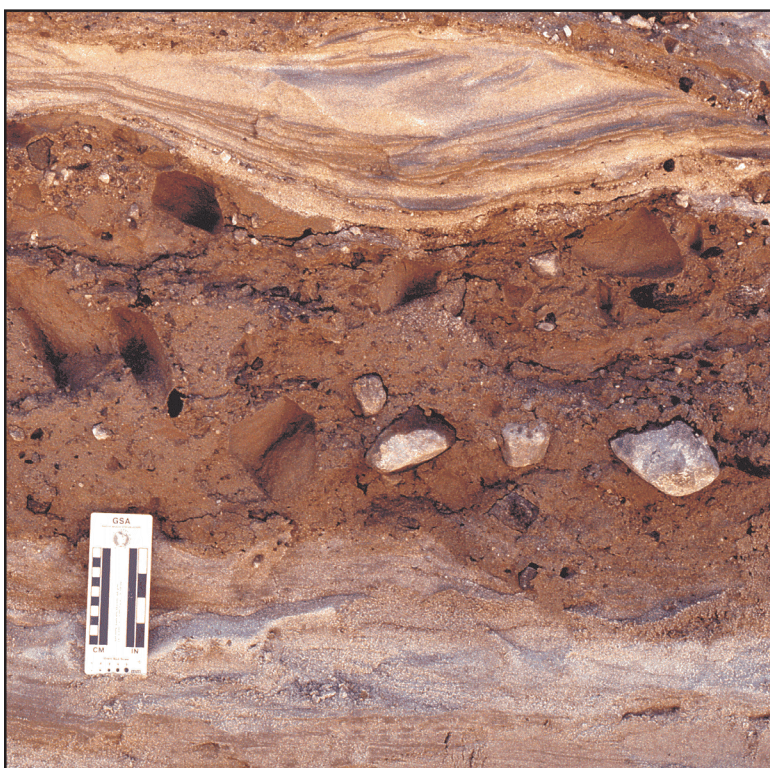
**Sand (ranging from very fine-grained to very coarse):** vfs-vcs -- Close-up of pit face in well-stratified sand beds deposited in glacial lake at lower end of Bear River valley, Newry.



**Pebble to cobble gravel:** p-c -- Pit in upper part of glaciomarine delta in Norridgewock, Kennebec River valley, showing massive gravel deposited by meltwater streams flowing across delta top.



**Pebble to boulder gravel (fossiliferous) over gravely sand:** p-b(f)/gs -- Close-up of pit face in marine nearshore deposit with fossil shells and barnacle-encrusted stones.



**Sand with interbedded flowtill:** s & ds(tf) -- Close-up of pit face in an end-moraine, Westbrook, showing part of a stony flowtill lens (center) deposited where glacier margin terminated in the sea.



**Gravel over sand over gravel:** p-c/s/p-c -- Close-up of pit face showing intertidal(?) sand unit between pebble-cobble gravel beds in upper part of glaciomarine delta, Columbia Falls.