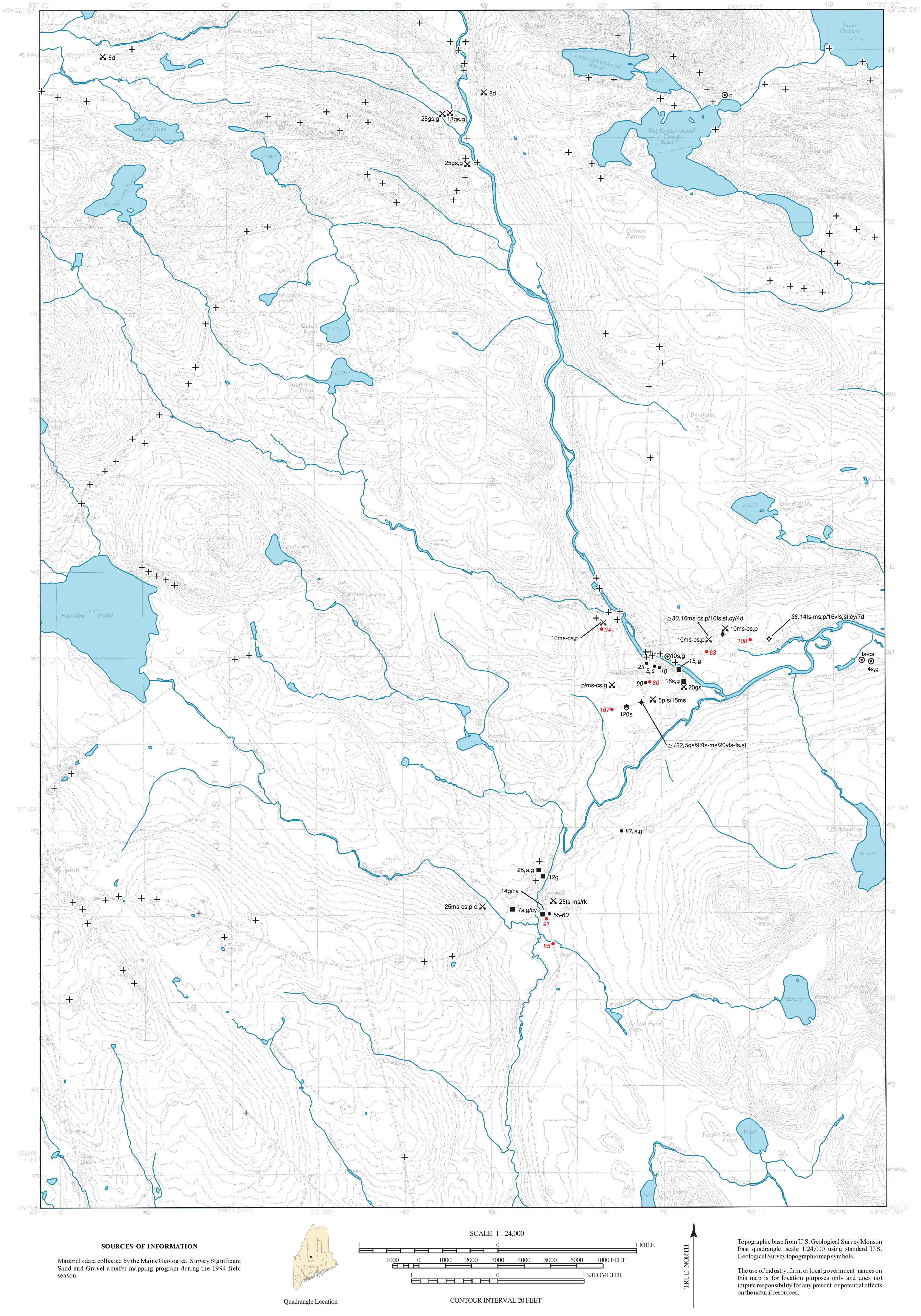


Surficial Materials



Monson East Quadrangle, Maine

Surficial materials mapping by

Daniel B. Locke
Craig D. Neil

Digital cartography by:
Michèle A. Foley
Michael E. Foley

Robert G. Marvinney
State Geologist

Cartographic design and editing by:
Robert D. Tucker
Bennett J. Wilson, Jr.

Funding for the preparation of this map was provided in part by the
Maine Department of Environmental Protection.



Maine Geological Survey

Address: 22 State House Station, Augusta, Maine 04333
Telephone: 207-287-2801 **E-mail:** mgs@maine.gov
Home page: <http://www.maine.gov/doc/nrmc/nrmc.htm>

Open-File No. 98-43

1998

SURFICIAL MATERIALS

Uses of Materials Maps

Geologic processes such as weathering and erosion break bedrock down into smaller particles of sediment. Sediments such as clay, silt, sand, gravel, and other loose deposits which lie on top of bedrock are grouped together in the general category of "surficial materials." These materials are not soils; they are the deeper earth materials that lie between the soil zone and the underlying bedrock. Soils commonly develop by weathering of the uppermost part of these materials.

Mapping Surficial Materials

When mapping the surficial geology or the extent of sand and gravel aquifers in a quadrangle, a geologist first makes observations about the surficial materials at a network of points throughout the area. These points of observation may be auger holes, road cuts, gravel pits, stream cuts, or other places where sediments are visible. The geologist describes the materials at each location using the size abbreviations shown in the explanation below the map at left. Sedimentary materials range in particle size from clay (<0.002 mm) to boulders (>256 mm or 10"). The observation points are plotted on the quadrangle and the resulting surficial materials map shows what is known about the distribution, thickness, and texture of sediments in the area.

By combining materials data with well and test hole data, seismic studies, other published information, and analysis of aerial photographs, the geologist then interprets the pattern of these materials to create a geologic map.

Photographs

The photos below are examples of the various material sizes as they are observed in the field. The photo captions describe the materials and give the abbreviations used to represent them on the map at left. Inspection of the photos will give the map user a better sense of what the map units mean. Note especially the photos at the bottom of the page. These photos show interbedded layers of materials as they may often be seen in the field. Materials in a gravel pit are rarely all a single size, and these examples show their possible complexity.



Till over bedrock: **d(t)/rk** -- Road cut on Route 17 in Township D, showing thin layer of till overlying glacially eroded bedrock. Dark streaks on the rock face are wet areas.



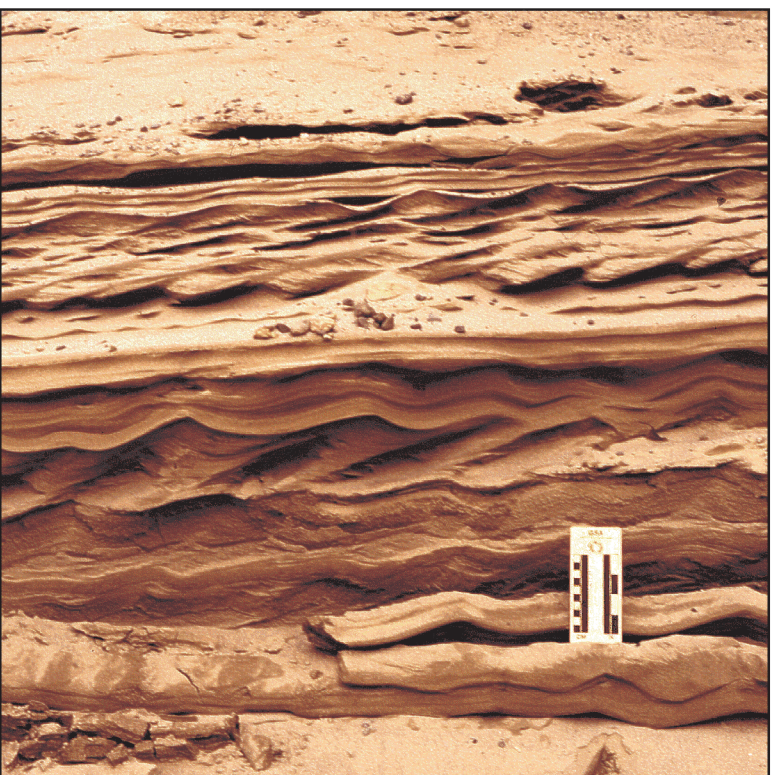
Till: **ds(t)** -- Borrow pit near Millinocket, exposing sandy, bouldery till. This stony till commonly occurs in areas of granitic bedrock.



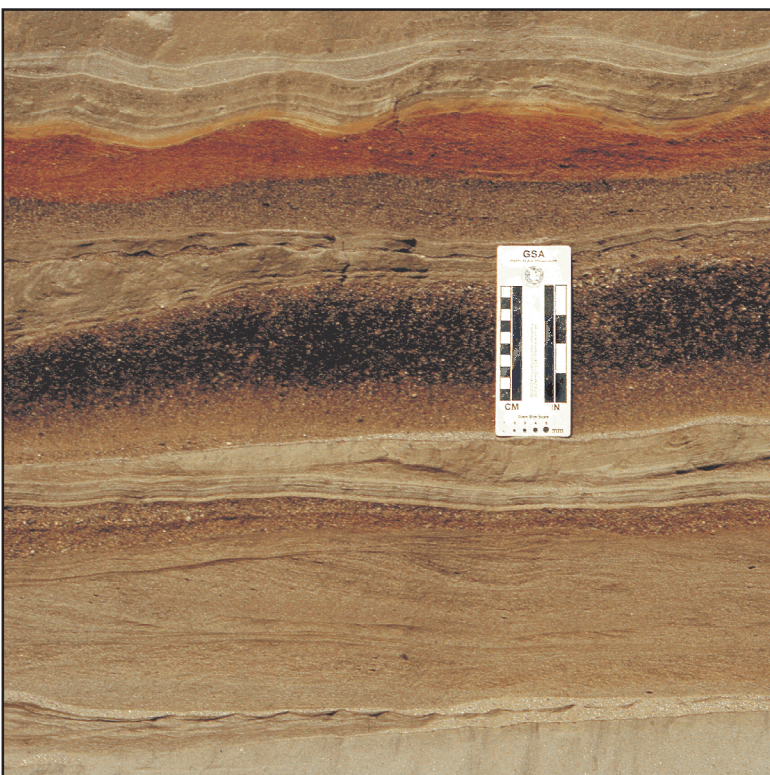
Clayey silt over sand with pebble-cobble gravel: **st,cy/s,p,c** -- Borrow pit in Kennebec River valley, Pittston, showing glaciomarine sealfloor mud (Presumpscot Formation) overlying sand and gravel deposited in submarine fan at glacier margin.



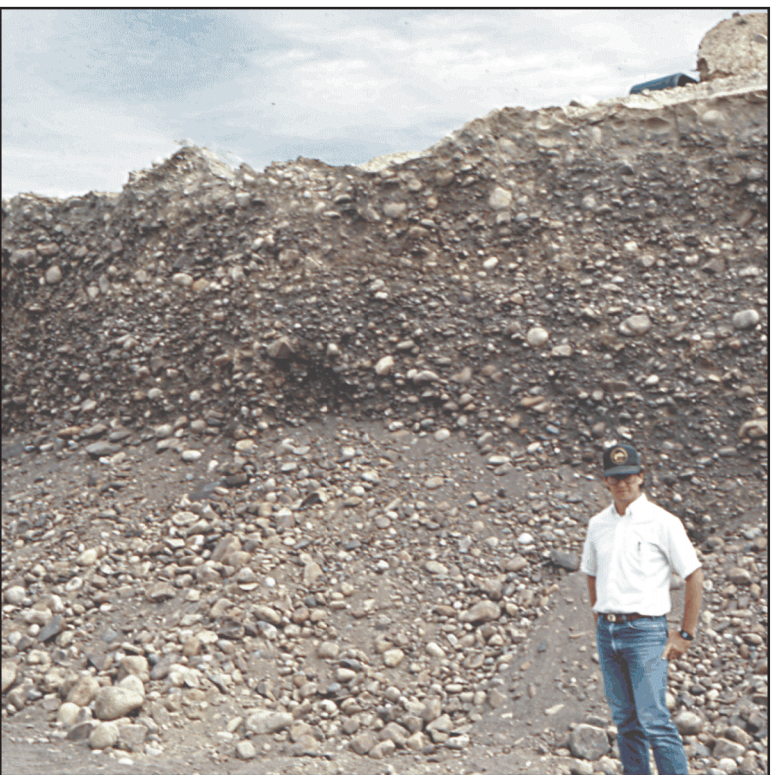
Clay-silt: **cy-st** -- Coastal bluff in Brunswick, exposing a thick section of well-stratified glaciomarine sealfloor mud (Presumpscot Formation).



Sand: **s** -- Close-up of pit face in glaciomarine delta west of Dolby Pond, Millinocket, showing current ripples in sandy delta foreset beds. Scale card is graduated in centimeters and inches.



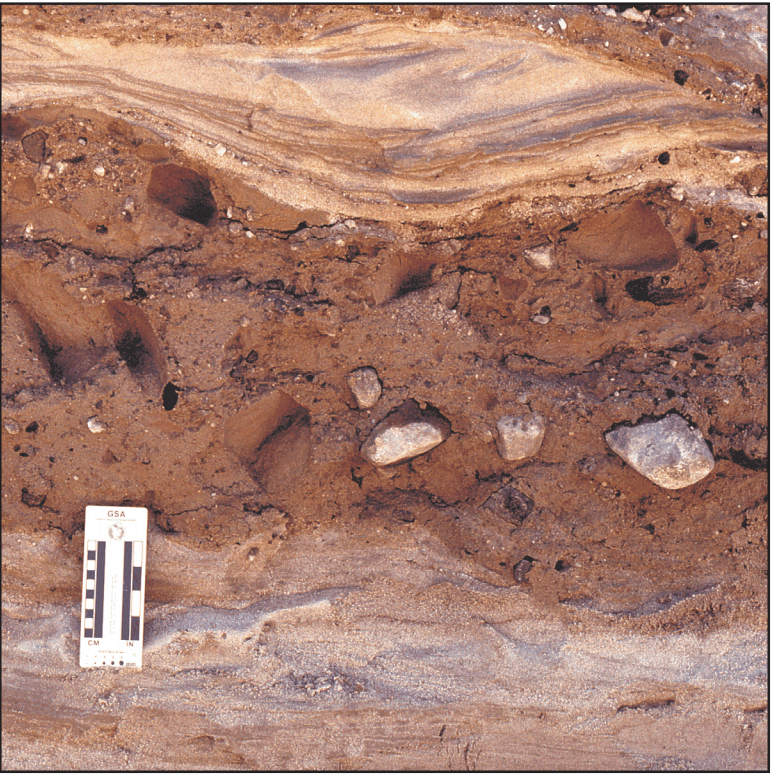
Sand (ranging from very fine-grained to very coarse): **vfs-vcs** -- Close-up of pit face in well-stratified sand beds deposited in glacial lake at lower end of Bear River valley, Newry.



Pebble to cobble gravel: **p-c** -- Pit in upper part of glaciomarine delta in Norridgewock, Kennebec River valley, showing massive gravel deposited by meltwater streams flowing across delta top.



Pebble to boulder gravel (fossiliferous) over gravelly sand: **p-b(f)/gs** -- Close-up of pit face in marine nearshore deposit with fossil shells and barnacle-encrusted stones.



Sand with interbedded flowtill: **s±ds(tf)** -- Close-up of pit face in an end-moraine, Westbrook, showing part of a stony flowtill lens (center) deposited where glacier margin terminated in the sea.



Gravel over sand over gravel: **p-c/s/p-c** -- Close-up of pit face showing intertidal(?) sand unit between pebble-cobble gravel beds in upper part of glaciomarine delta, Columbia Falls.

- 8s-b** Materials data from shovel hole, hand-dugger hole, natural exposure, or excavation (other than borrow pit).
- 56** Depth to bedrock from well (≥ is used to indicate minimum depth to bedrock), in feet below land surface.
- Bedrock well.
- Drilled overburden well.
- Dug well.
- ↓** Driven point.
- ◆ 20fs,st** Observation well with materials data.
- ◆ 10gs/rk** Test boring with materials data.
- ✕ s-b** Borrow pit, recently active at time of mapping, with materials data.
- ✕ s-p** Borrow pit, evidently abandoned or in long disuse at time of mapping, with materials data where noted in remaining exposures. This symbol also indicates pits that have been reclaimed and no longer exist, but their former locations are evident from earlier reconnaissance work, air photos, or county soils maps published by the U. S. Department of Agriculture.
- ✕** Quarry.
- Location of site for which a data sheet is on file at the Maine Geological Survey.
- 56** Depth to bedrock from seismic line, in feet below land surface.
- +** Bedrock outcrop.

OTHER SOURCES OF INFORMATION

- Hanson, L. S., and Caldwell, D. W., 1986, Reconnaissance surficial geology of the Sebec Lake 15 quadrangle, Maine: Maine Geological Survey, Open-File Map 86-37.
- Neil, C. D. (compiler), 1998, Significant sand and gravel aquifers in the Monson East quadrangle, Maine: Maine Geological Survey, Open-File Map 98-16.
- Thompson, W. B., 1979, Surficial geology handbook for coastal Maine: Maine Geological Survey, 68 p. (out of print).
- Thompson, W. B., and Borns, H. W., Jr., 1985, Surficial geologic map of Maine: Maine Geological Survey, scale 1:500,000.