

6-1-2001

# Labor Market Digest, June 2001

Maine Department of Labor

Maine Center for Workforce Research and Information

Follow this and additional works at: [http://digitalmaine.com/cwri\\_docs](http://digitalmaine.com/cwri_docs)

---

## Recommended Citation

Maine Department of Labor and Maine Center for Workforce Research and Information, "Labor Market Digest, June 2001" (2001).  
*Center for Workforce Research and Information Documents*. Paper 887.  
[http://digitalmaine.com/cwri\\_docs/887](http://digitalmaine.com/cwri_docs/887)

This Text is brought to you for free and open access by the Labor at Maine State Documents. It has been accepted for inclusion in Center for Workforce Research and Information Documents by an authorized administrator of Maine State Documents. For more information, please contact [statedocs@maine.gov](mailto:statedocs@maine.gov).

# MAINE

## DEPARTMENT OF

# LABOR

*Labor Market Information*

## INSIDE . . .

Cumberland County records the lowest unemployment rate at 1.7 percent ..... page 3

Adjusted statewide unemployment rate rises from 2.4 percent in March to 3.1 percent in April ..... page 4

Nonfarm employment rises by 9,600 over the year, led by services industries ..... page 6

Between 1999 and 2000, Maine gained and lost jobs in industries across the entire earnings spectrum ..... page 8

*A publication of the*

MAINE DEPARTMENT OF LABOR  
Labor Market  
Information Services

*Raynold A. Fongemie*  
Division Director

*Dana A. Evans*  
Editor

*The Maine Department of Labor provides equal opportunity in employment and programs. Auxiliary aids and services provided upon request.*

For more information, call  
Telephone (207) 287-2271  
FAX (207) 287-2947  
TTY 1-800-794-1110  
E-Mail : [lmis.me@state.me.us](mailto:lmis.me@state.me.us)

Visit our Home Page at  
[www.state.me.us/labor/lmis](http://www.state.me.us/labor/lmis)

# LABOR MARKET DIGEST

April Data

**LIBRARY USE ONLY**

June 2001

## Average Annual Wages in 2000

Average annual wages of all workers covered by state and federal unemployment insurance programs in Maine rose 2.9 percent, from \$26,888 in 1999 to \$27,664 in 2000. Wages increased 2.8 percent in the private sector and 3.2 percent in government. All major industry divisions, with the exception of finance, insurance, and real estate (FIRE), recorded wage gains. The wage decline recorded for FIRE was due primarily to a drop in the average wage paid by the insurance industry. Annual average wages for 2000 were highest in FIRE and lowest in retail trade.

### Average Annual Wages by Major Industry in Maine

Industry	1999	2000	Percent Change
Total	\$26,888	\$27,664	2.9
Private	26,530	27,280	2.8
Construction	30,495	31,258	2.5
Manufacturing	34,563	35,344	2.3
Transportation & Public Utilities	32,256	33,962	5.3
Wholesale Trade	34,684	36,243	4.5
Retail Trade	16,144	16,771	3.9
Finance, Insurance & Real Estate	39,245	37,991	-3.2
Services	24,931	26,078	4.6
Government	28,762	29,672	3.2

Sagadahoc	\$31,391
Cumberland	\$30,752
York	\$27,728
Kennebec	\$27,705
Penobscot	\$26,774
Androscoggin	\$26,193
Franklin	\$25,915
Somerset	\$25,645
Hancock	\$24,794
Oxford	\$24,619
Knox	\$24,366
Waldo	\$23,652
Aroostook	\$22,963
Lincoln	\$22,566
Washington	\$22,315
Piscataquis	\$22,085

### Average Annual Wages by County in 2000

Sagadahoc County recorded the highest average annual wage in 2000, supplanting Cumberland County, the 1999 pacesetter. Piscataquis County continued to register the lowest average annual wage.



## Civilian Labor Force, Employed, and Unemployed by Labor Market Area, Not Seasonally Adjusted

AREA	CIVILIAN LABOR FORCE <sup>1</sup>			EMPLOYED <sup>2</sup>			UNEMPLOYED <sup>3</sup>			UNEMPLOYMENT RATE <sup>4</sup>		
	Apr 01	Mar 01	Apr 00	Apr 01	Mar 01	Apr 00	Apr 01	Mar 01	Apr 00	Apr 01	Mar 01	Apr 00
<b>LABOR MARKET AREAS</b>												
Augusta	46,950	47,020	46,390	45,330	45,340	44,320	1,620	1,670	2,070	3.4%	3.6%	4.5%
Bangor MSA	54,100	54,400	53,300	52,800	53,100	51,800	1,200	1,300	1,400	2.3	2.4	2.7
Bath-Brunswick	36,870	36,620	36,060	36,000	35,730	34,900	870	890	1,160	2.4	2.4	3.2
Belfast	17,560	17,410	17,120	16,940	16,730	16,370	620	680	740	3.5	3.9	4.3
Biddeford	40,620	39,480	40,260	39,460	38,240	39,320	1,160	1,240	940	2.9	3.1	2.3
Boothbay Harbor	9,070	8,530	8,690	8,840	8,270	8,420	230	260	260	2.5	3.0	3.0
Bucksport	5,470	5,420	5,390	5,270	5,210	5,130	200	210	270	3.7	3.8	4.9
Calais	5,010	5,090	5,150	4,540	4,650	4,340	470	440	810	9.4	8.6	15.7
Dexter-Pittsfield	12,710	12,510	12,990	11,790	11,640	11,980	920	880	1,010	7.2	7.0	7.8
Dover-Foxcroft	7,280	7,370	7,250	6,760	6,930	6,730	510	440	520	7.1	6.0	7.2
Ellsworth-Bar Harbor	19,440	18,530	19,360	18,290	17,210	18,040	1,160	1,310	1,330	5.9	7.1	6.8
Farmington	17,410	18,060	17,950	16,340	17,180	16,400	1,070	870	1,550	6.1	4.8	8.6
Fort Kent	3,900	4,020	4,050	3,580	3,860	3,540	320	170	510	8.1	4.1	12.6
Greenville	840	950	880	730	890	750	110	60	130	13.2	6.4	14.3
Houlton	6,070	6,070	6,340	5,840	5,920	5,970	230	160	370	3.9	2.6	5.9
Jonesport-Milbridge	3,970	4,000	4,220	3,580	3,580	3,750	400	430	470	10.0	10.7	11.2
Kittery-York <sup>5</sup>	21,150	21,370	20,830	20,880	21,030	20,540	270	340	290	1.3	1.6	1.4
Lewiston-Auburn MSA	55,200	56,200	55,000	53,500	54,400	53,100	1,700	1,700	1,900	3.2	3.0	3.5
Lincoln-Howland	5,910	5,950	6,020	5,430	5,650	5,450	480	300	570	8.1	5.0	9.5
Machias-Eastport	6,730	6,770	6,670	6,310	6,370	6,220	420	390	450	6.2	5.8	6.8
Madawaska	3,670	3,660	3,900	3,560	3,560	3,700	110	90	200	2.9	2.6	5.2
Millinocket-East Millinocket	4,810	4,910	5,010	4,490	4,650	4,530	320	270	480	6.7	5.4	9.6
Norway-Paris	11,970	11,930	11,700	11,460	11,450	11,080	520	480	620	4.3	4.0	5.3
Outer Bangor	8,870	8,910	8,580	8,440	8,510	8,050	430	400	530	4.8	4.5	6.2
Patten-Island Falls	1,750	1,840	1,900	1,610	1,760	1,700	140	80	200	8.2	4.3	10.6
Portland MSA	138,900	140,700	135,700	136,600	138,500	133,200	2,200	2,200	2,500	1.6	1.6	1.9
Presque Isle-Caribou	21,050	20,950	21,430	20,180	20,220	20,350	870	740	1,080	4.1	3.5	5.0
Rockland	23,170	23,010	23,430	22,570	22,340	22,740	600	660	690	2.6	2.9	2.9
Rumford	10,150	10,690	10,110	9,490	10,200	9,220	660	480	900	6.5	4.5	8.9
Sanford	23,340	23,810	23,490	22,480	22,880	22,630	860	930	860	3.7	3.9	3.7
Sebang Lakes Region	12,970	13,280	12,730	12,560	12,870	12,210	410	400	520	3.2	3.0	4.1
Skowhegan	16,680	16,520	16,700	15,550	15,530	15,330	1,130	1,000	1,370	6.8	6.0	8.2
Stonington	5,840	5,750	5,830	5,660	5,540	5,600	180	210	230	3.1	3.6	4.0
Van Buren	1,490	1,500	1,550	1,400	1,430	1,440	100	80	110	6.6	5.3	7.0
Waterville	24,600	24,760	25,060	23,700	23,870	23,850	900	890	1,210	3.7	3.6	4.8
MAINE	685,500	688,000	681,100	662,000	665,300	652,800	23,500	22,700	28,300	3.4	3.3	4.2
UNITED STATES (000)	141,073	141,751	140,403	135,122	135,298	135,215	5,951	6,453	5,188	4.2	4.6	3.7

<sup>1</sup> Civilian labor force, employed, and unemployed estimates are by place of residence. Current month estimates are preliminary; prior month and year-ago estimates are revised. Items may not add due to rounding. All data exclude members of the Armed Forces. MSA stands for Metropolitan Statistical Area.

<sup>2</sup> Total employment includes nonfarm wage and salary workers, agricultural workers, unpaid family workers, domestics, the self employed, and workers involved in labor disputes.

<sup>3</sup> People are classified as unemployed, regardless of their eligibility for unemployment benefits or public assistance, if they meet all of the following criteria: 1) they were not employed during the survey week; 2) they were available for work at that time; and 3) they made specific efforts to find employment some time during the prior four weeks. Persons laid off from their former jobs and awaiting recall and those expecting to report to a job within 30 days need not be looking for work to be counted as unemployed.

<sup>4</sup> The unemployment rate is calculated by dividing the total number of unemployed by the total civilian labor force, and is expressed as a percent.

<sup>5</sup> Kittery-York is the five-town Maine portion of the Portsmouth-Rochester PMSA which includes towns in both Maine and New Hampshire.

Source: Maine Department of Labor, Labor Market Information Services, in cooperation with the U.S. Department of Labor, Bureau of Labor Statistics.



## Civilian Labor Force, Employed, and Unemployed by County, Not Seasonally Adjusted<sup>1</sup>

AREA	CIVILIAN LABOR FORCE			EMPLOYED			UNEMPLOYED			UNEMPLOYMENT RATE		
	Apr 01	Mar 01	Apr 00	Apr 01	Mar 01	Apr 00	Apr 01	Mar 01	Apr 00	Apr 01	Mar 01	Apr 00
COUNTY												
Androscoggin	61,740	62,790	61,670	59,730	60,810	59,280	2,010	1,980	2,400	3.3%	3.1%	3.9%
Aroostook	37,550	37,620	38,780	35,800	36,320	36,300	1,760	1,310	2,490	4.7	3.5	6.4
Cumberland	146,260	147,980	143,040	143,810	145,560	140,120	2,450	2,420	2,930	1.7	1.6	2.0
Franklin	14,710	15,230	15,040	13,800	14,520	13,850	910	710	1,200	6.2	4.7	8.0
Hancock	28,060	27,100	27,910	26,680	25,540	26,280	1,380	1,570	1,620	4.9	5.8	5.8
Kennebec	61,110	61,270	60,970	59,060	59,200	58,250	2,050	2,060	2,710	3.4	3.4	4.5
Knox	20,260	20,130	20,510	19,740	19,540	19,890	530	590	620	2.6	2.9	3.0
Lincoln	17,940	17,380	17,460	17,440	16,820	16,900	500	570	560	2.8	3.3	3.2
Oxford	26,420	27,020	26,030	25,070	25,910	24,320	1,350	1,110	1,700	5.1	4.1	6.5
Penobscot	80,540	80,960	79,990	77,530	78,170	76,350	3,020	2,790	3,640	3.7	3.4	4.6
Piscataquis	8,240	8,450	8,250	7,610	7,940	7,600	630	510	650	7.6	6.0	7.9
Sagadahoc	17,240	17,110	16,890	16,840	16,720	16,320	400	390	570	2.3	2.3	3.4
Somerset	26,090	25,850	26,200	24,340	24,270	24,220	1,760	1,580	1,980	6.7	6.1	7.6
Waldo	23,350	23,260	22,980	22,510	22,330	21,900	840	930	1,080	3.6	4.0	4.7
Washington	16,120	16,250	16,430	14,810	14,950	14,690	1,310	1,300	1,750	8.1	8.0	10.6
York	99,840	99,630	98,940	97,210	96,750	96,520	2,630	2,880	2,420	2.6	2.9	2.4
MAINE	685,500	688,000	681,100	662,000	665,300	652,800	23,500	22,700	28,300	3.4	3.3	4.2
UNITED STATES (000)	141,073	141,751	140,403	135,122	135,298	135,215	5,951	6,453	5,188	4.2	4.6	3.7

<sup>1</sup> See page 2 for footnotes 1 through 4 and source.

### Area Analyst's Corner

#### Central Maine

Ken Bridges (207) 624-5199

**EnvisioNet** laid off 160 employees at their Augusta customer service facility. The company is downsizing from 1,900 to 1,200 employees, which is still 200 more workers than the company employed a year ago. **EnvisioNet** is moving its headquarters back to Augusta from Brunswick. ♦ An informal survey of mid-coast hotels and inns reveals that **spring bookings** were slightly below year-ago levels, but **summer reservations** appear to be about as strong as they have been for the last couple of years. ♦ An **Olympia Sports** outlet will open in Belfast June 20, employing 25 to 30 people.

#### Western Maine

Gerard Dennison (207) 753-9045

Over 400 workers lost their jobs when the **EnvisioNet** technical support center in Brunswick closed. Company officials cited a reduced service call workload for Microsoft and Dell as the reason for the layoffs. ♦ **Maine Shoe** in Lewiston will close the rubber sole manufacturing operation in Wilton on June 1 with a loss of 35 jobs. ♦ **Bath Iron Works (BIW)** received additional funding to extend the design phase for the proposed DD-21 land attack concept destroyer. The spending package being reviewed by the Pentagon would have BIW building 16 ships through the year 2015.

#### North/East Maine

Craig Holland (207) 941-3076

**Wal-Mart** plans to construct a 155,083 square foot Superstore in Brewer, employing approximately 350 workers when opened late next year. ♦ **Pan American Airways** opened a reservation call center in Mattawamkeag employing 14 workers, with plans to increase staffing to 28 by year's end. ♦ **Olamon Industries**, a manufacturer of plastic cassette shells and small automotive parts on Indian Island, has begun a series of layoffs that will bring employment at the facility down to only maintenance personnel. Over 30 workers are expected to lose their jobs during the next few months.

#### Southern Maine

Merrill Huhtala (207) 822-0216

**Fairchild Semiconductor** posted a 50 percent reduction in first quarter profits, and, while not planning involuntary layoffs in South Portland, announced a global workforce reduction of 10 percent over the next few months. ♦ **Sebago, Inc.**, laid off about 27 workers from their Bridgton and Westbrook plants in response to reduced global demand for their products. The company does not anticipate additional workforce reductions. ♦ In South Portland, 42 employers and 1,500 prospective applicants attended the annual **Portland Press Herald/Maine Sunday Telegram Job Fair**.



**Civilian Labor Force, Employed, and Unemployed in Maine, Seasonally Adjusted** (in thousands)

ITEM	2001				2000								
	Apr	Mar	Feb	Jan	Dec	Nov	Oct	Sept	Aug	Jul	Jun	May	Apr
Civilian Labor Force	693.8	694.0	696.3	694.1	688.5	689.0	688.9	689.2	688.0	688.3	689.4	690.0	689.7
Employed	672.0	677.5	677.7	677.3	669.6	668.7	667.6	666.4	665.1	665.0	664.3	664.1	663.1
Unemployed	21.8	16.4	18.6	16.8	18.9	20.3	21.3	22.8	22.9	23.2	25.1	26.0	26.5
Unemployment Rate (%)	3.1	2.4	2.7	2.4	2.7	2.9	3.1	3.3	3.3	3.4	3.6	3.8	3.8

<sup>1</sup> See page 2 for footnotes 1 through 4 and source.

**Nonfarm Wage and Salary Employment in Maine, Seasonally Adjusted<sup>1</sup>** (in thousands)

INDUSTRY	2001				2000								
	Apr	Mar	Feb	Jan	Dec	Nov	Oct	Sept	Aug	Jul	Jun	May	Apr
Nonfarm Wage and Salary Employment <sup>2</sup>	611.9	612.5	612.8	611.8	610.3	610.5	603.9	603.4	605.3	608.4	603.6	604.0	602.6
Construction	31.5	30.8	30.6	30.3	29.9	29.7	29.7	29.5	29.5	29.5	29.5	29.6	30.1
Manufacturing	82.4	83.4	83.5	84.5	84.4	85.3	80.6	80.8	85.8	86.7	86.2	86.2	86.2
Durable Goods	42.1	42.6	42.7	43.3	43.3	43.7	38.8	38.9	43.7	44.2	43.7	43.7	43.6
Nondurable Goods	40.3	40.8	40.8	41.2	41.1	41.6	41.8	41.9	42.1	42.5	42.5	42.5	42.6
Transportation and Public Utilities	24.4	24.1	24.3	24.4	24.1	24.2	24.2	24.4	23.1	24.6	24.3	24.6	24.5
Wholesale Trade	27.7	28.3	28.5	28.7	27.9	28.0	27.8	27.8	27.5	27.3	27.3	27.2	27.2
Retail Trade	124.8	124.6	124.1	123.7	124.2	124.0	124.7	124.1	124.2	124.1	122.2	121.5	122.2
Finance, Insurance, and Real Estate	32.4	32.5	32.9	32.8	33.0	32.8	32.6	32.5	32.4	32.1	31.8	32.1	32.1
Services	188.8	189.1	188.6	186.9	185.8	185.7	184.1	183.4	182.6	182.8	182.3	181.7	181.4
Government	99.8	99.6	100.2	100.4	100.9	100.7	100.1	100.8	100.1	101.2	99.9	101.0	98.8

<sup>1</sup> See footnotes 1 and 2 on page 6. <sup>2</sup> Mining employment is not suitable for seasonal adjustment because it has very little seasonal and irregular movement. Thus, the not-seasonally-adjusted series is used as a component of the seasonally adjusted total nonfarm wage and salary employment estimate. Source: See page 2.

**Maine Unemployment Rate Rises to 3.1 in April**

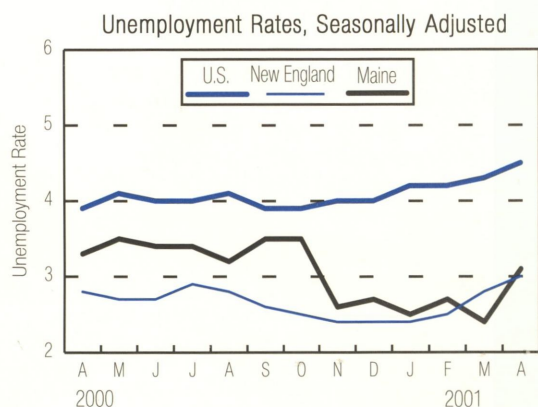
State Labor Commissioner Valerie Landry announced that the seasonally-adjusted April unemployment rate for Maine was 3.1 percent, up from 2.4 percent in March. Despite the increase, Maine's unemployment rate remains low by historical standards and well below the national April rate of 4.5 percent.

"The Maine labor market is feeling the effects of the national slowdown, with nonfarm wage and salary job losses between March and April concentrated in manufacturing and wholesale trade," said Commissioner Landry. "In addition, poor weather conditions in April resulted in a late start for many of the outdoor spring activities."

Between March and April seasonally-adjusted nonfarm wage and salary jobs recorded a decline of 600, with losses in manufacturing and wholesale trade more than offsetting gains in other industries.

Between April 2000 and April 2001, the seasonally-adjusted Maine unemployment rate fell from 3.8 percent to 3.1 percent. Nonfarm wage and salary employment jobs rose by 9,300. Eighty percent of the job growth was recorded in services industries. Gains also were recorded in retail trade, construction, government, and wholesale trade. Manufacturing employment fell by 3,800.

Other New England states reporting their seasonally-adjusted unemployment rates for April include Vermont, 3.1 percent, and New Hampshire, 3.9 percent. The adjusted national rate



was 4.5 percent in April, up from 4.3 percent in March and 4.0 percent in April 2000.

The not-seasonally-adjusted unemployment rate for April was 3.4 percent, up from 3.3 percent in March, and down from 4.2 percent in April 2000. Not-seasonally-adjusted unemployment rates for Maine counties ranged from 1.7 percent in Cumberland County to 8.1 percent in Washington County.

Not-seasonally-adjusted nonfarm wage and salary jobs in Maine rose seasonally by 6,200 between March and April. Eating and drinking places and lodging establishments added jobs as they began to gear up for the summer season. Construction recorded a seasonal gain of 2,700 jobs. These gains were partially offset by a loss of 1,500 in manufacturing.



## Selected Regular Unemployment Compensation Program Indicators

Key Data	Apr 2001	Mar 2001	Apr 2000
Average Duration	14.2	14.1	14.5
Average Weekly Benefit Amount*	\$210.32	\$208.66	\$198.86
Exhaustees	1,131	846	1,293

\* For totally unemployed claimants, excluding dependency allowances.

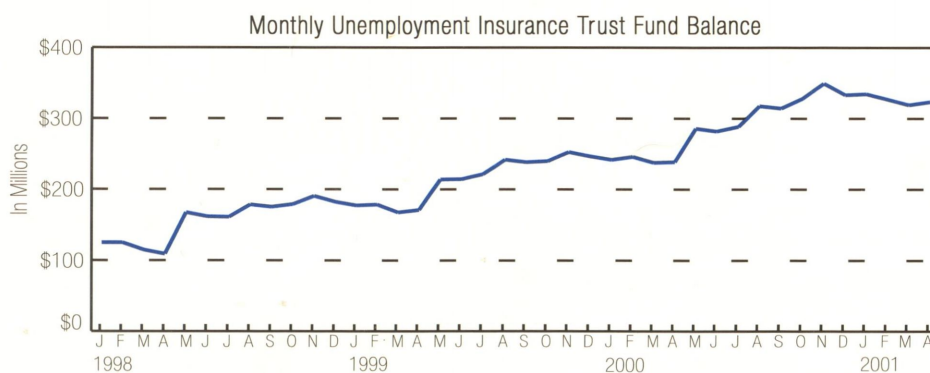
### Weekly Initial Claims

Week	5/12	5/5	4/28	4/21	4/14	4/7	3/31
2001	1,272	1,280	1,537	1,417	1,689	1,469	1,712
Week	5/13	5/6	4/29	4/22	4/15	4/8	4/1
2000	901	904	1,280	1,234	1,176	1,225	1,551

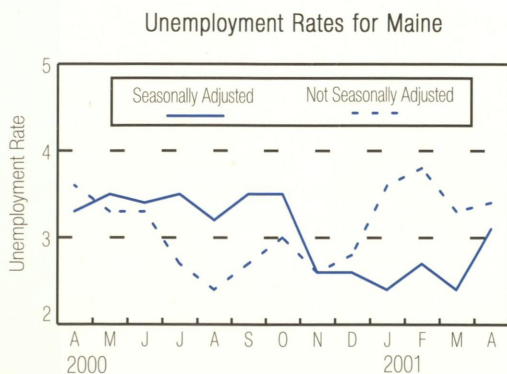
### Continued Claims Less Partial\*

Apr 2001	Mar 2001	Apr 2000
10,048	10,476	7,806

\* For the week including the 12<sup>th</sup> of the month.



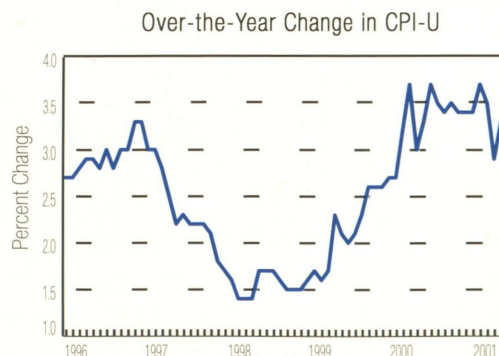
Between April 2000 and April 2001, not-seasonally-adjusted nonfarm wage and salary jobs rose by 9,600. Services increased by 7,600, mainly in business services, social services, and other services. Retail trade increased by 2,600, largely in food stores and other retail trade. Construction increased by 1,400. Wholesale trade added 500 jobs. Manufacturing fell by 3,800, with losses of 1,000 in lumber and wood products, 700 in both textile mill products and leather and leather products, and 400 each in electronic and other electrical equipment, paper and allied products, and transportation equipment.



## U.S. Consumer Price Index for all urban consumers (CPI-U)

Item	Apr 01	Mar 01	Apr 00	Dec 00
(1982-1984 = 100) All Items	176.9	176.2	171.3	174.0

Percent Change from Prior Month	+0.4%
Percent Change from 12 Months Ago	+3.3%
Percent change from Last December	+1.6%





## Nonfarm Wage and Salary Employment, Not Seasonally Adjusted (in thousands)

INDUSTRY	MAINE			PORTLAND MSA			LEWISTON-AUBURN MSA		
	Apr 01	Mar 01	Apr 00	Apr 01	Mar 01	Apr 00	Apr 01	Mar 01	Apr 00
<b>Nonfarm Wage and Salary Employment<sup>1</sup></b>	<b>603.2</b>	<b>597.0</b>	<b>593.6</b>	<b>152.4</b>	<b>151.8</b>	<b>149.0</b>	<b>46.7</b>	<b>46.5</b>	<b>46.5</b>
<b>Goods Producing</b>	<b>111.5</b>	<b>110.3</b>	<b>113.9</b>	<b>21.9</b>	<b>21.7</b>	<b>21.2</b>	<b>9.1</b>	<b>9.2</b>	<b>9.8</b>
<b>Mining</b>	<b>0.1</b>	<b>0.1</b>	<b>0.1</b>	*	*	*	*	*	*
<b>Construction</b>	<b>30.0</b>	<b>27.3</b>	<b>28.6</b>	<b>7.3</b>	<b>7.0</b>	<b>6.7</b>	<b>2.0</b>	<b>1.9</b>	<b>1.9</b>
Building Construction	7.2	7.0	7.2	1.4	1.4	1.3	*	*	*
Heavy Construction	4.7	3.8	4.5	*	*	*	*	*	*
Special Trade Contractors	18.1	16.5	16.9	6.1	5.7	5.4	*	*	*
<b>Manufacturing</b>	<b>81.4</b>	<b>82.9</b>	<b>85.2</b>	<b>14.6</b>	<b>14.7</b>	<b>14.5</b>	<b>7.1</b>	<b>7.3</b>	<b>7.9</b>
Durable Goods	41.4	42.6	42.9	7.8	7.8	7.4	2.1	2.2	2.3
Lumber and Wood Products	9.2	10.1	10.2	*	*	*	*	*	*
Primary and Fabricated Metals	4.1	4.2	4.0	*	*	*	*	*	*
Industrial Machinery and Equipment	4.9	4.9	4.7	1.6	1.6	1.6	*	*	*
Electronic and Other Electrical Equipment	7.1	7.5	7.5	3.2	3.2	2.9	*	*	*
Transportation Equipment	10.7	10.6	11.1	*	*	*	*	*	*
Other Durable Goods	5.4	5.3	5.4	3.0	3.0	2.9	*	*	*
Nondurable Goods	40.0	40.3	42.3	6.8	6.9	7.1	5.0	5.1	5.6
Food and Kindred Products	6.6	6.6	6.7	1.9	2.0	1.9	*	*	*
Textile Mill Products	2.6	2.7	3.3	*	*	*	*	*	*
Apparel and Other Textile Products	2.3	2.3	2.4	*	*	*	*	*	*
Paper and Allied Products	12.7	13.0	13.1	*	*	*	*	*	*
Printing and Publishing	6.0	6.1	6.2	1.8	1.8	1.8	*	*	*
Rubber and Misc. Plastic Products	2.7	2.6	2.9	*	*	*	*	*	*
Leather and Leather Products	5.0	5.1	5.7	0.7	0.7	0.8	0.7	0.7	0.9
Other Nondurable Goods	2.1	1.9	2.0	2.4	2.4	2.6	4.3	4.4	4.7
<b>Service Producing</b>	<b>491.7</b>	<b>486.7</b>	<b>479.7</b>	<b>130.5</b>	<b>130.1</b>	<b>127.8</b>	<b>37.6</b>	<b>37.3</b>	<b>36.7</b>
<b>Transportation and Public Utilities</b>	<b>23.9</b>	<b>23.6</b>	<b>24.0</b>	<b>7.7</b>	<b>7.6</b>	<b>7.3</b>	<b>2.1</b>	<b>2.1</b>	<b>2.2</b>
Wholesale Trade	27.5	27.7	27.0	10.3	10.3	9.6	2.6	2.5	2.6
Retail Trade	118.5	115.5	115.9	31.1	31.0	31.0	8.9	8.8	8.7
General Merchandise Stores	11.4	11.3	11.5	*	*	*	*	*	*
Food Stores	23.4	23.2	22.4	*	*	*	*	*	*
Automotive Sales and Services	13.9	13.7	14.0	*	*	*	*	*	*
Eating and Drinking Places	35.6	33.2	34.8	9.5	9.2	9.1	*	*	*
Other Retail Trade	34.2	34.1	33.2	*	*	*	*	*	*
<b>Finance, Insurance, and Real Estate</b>	<b>32.2</b>	<b>32.4</b>	<b>31.9</b>	<b>13.2</b>	<b>13.2</b>	<b>13.3</b>	<b>2.4</b>	<b>2.4</b>	<b>2.5</b>
Banking	9.6	9.6	9.3	*	*	*	*	*	*
Insurance Carriers, Brokers and Agents	12.4	12.4	12.6	*	*	*	*	*	*
Other Finance, Insurance, and Real Estate	10.2	10.4	10.0	*	*	*	*	*	*
<b>Services</b>	<b>186.2</b>	<b>183.6</b>	<b>178.6</b>	<b>48.4</b>	<b>48.1</b>	<b>46.9</b>	<b>16.3</b>	<b>16.0</b>	<b>15.4</b>
Hotels and Other Lodging Places	8.5	7.3	8.4	*	*	*	*	*	*
Business Services	28.1	27.8	25.2	*	*	*	*	*	*
Health Services	58.4	58.4	57.6	*	*	*	*	*	*
Educational Services	16.4	16.4	15.9	*	*	*	*	*	*
Social Services	27.1	26.8	25.0	*	*	*	*	*	*
Other Services	47.7	46.9	46.5	*	*	*	*	*	*
<b>Government</b>	<b>103.4</b>	<b>103.9</b>	<b>102.3</b>	<b>19.8</b>	<b>19.9</b>	<b>19.7</b>	<b>5.3</b>	<b>5.5</b>	<b>5.3</b>
Federal	13.4	13.3	14.7	2.5	2.5	2.6	0.3	0.3	0.4
State	28.2	28.4	27.5	5.0	5.1	5.2	0.8	0.9	0.8
Local <sup>2</sup>	61.8	62.2	60.1	12.3	12.3	11.9	4.2	4.3	4.1

<sup>1</sup> Nonfarm wage and salary employment estimates include all full- and part-time wage and salary workers who worked during or received pay for the pay period which includes the 12th of the month. Domestic workers in private households, proprietors, the self-employed, and unpaid family workers are excluded. Estimates measure the number of jobs by industry. Current month's estimates are preliminary; prior month and year-ago estimates are revised. These estimates are benchmarked to March 1998. As a measure of reliability, the March 1998 benchmark revision for total nonfarm wage and salary employment was .07 percent higher than the original sample-based estimate.

<sup>2</sup> Regular teachers are included in summer months whether or not specifically paid in those months.

\* Where an employment estimate is not entered, either the data is not available in sufficient detail for publication or is nondisclosable by law.

Source: See page 2.



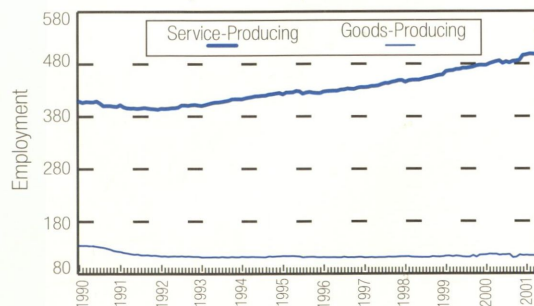
## Earnings and Hours of Production Workers in Manufacturing Industries<sup>1</sup> Not Seasonally Adjusted

AREA AND INDUSTRY	AVERAGE WEEKLY EARNINGS			AVERAGE WEEKLY HOURS			AVERAGE HOURLY EARNINGS			ANNUAL AVERAGE HOURLY EARNINGS		
	Apr 01	Mar 01	Apr 00	Apr 01	Mar 01	Apr 00	Apr 01	Mar 01	Apr 00	2000	1999	1998
<b>STATEWIDE</b>												
<b>Manufacturing</b>	<b>\$603.80</b>	<b>\$608.18</b>	<b>\$589.64</b>	<b>40.2</b>	<b>40.9</b>	<b>41.7</b>	<b>\$15.02</b>	<b>\$14.87</b>	<b>\$14.14</b>	<b>\$14.28</b>	<b>\$13.94</b>	<b>\$13.49</b>
<b>Durable Goods</b>	<b>\$71.24</b>	<b>\$90.96</b>	<b>\$60.62</b>	<b>40.2</b>	<b>41.5</b>	<b>41.9</b>	<b>14.21</b>	<b>14.24</b>	<b>13.38</b>	<b>13.50</b>	<b>13.12</b>	<b>12.99</b>
Lumber and Wood Products	467.10	494.91	470.40	41.3	42.3	42.0	11.31	11.70	11.20	11.42	10.84	10.46
Primary and Fabricated Metals	515.11	537.34	500.62	39.9	40.8	40.8	12.91	13.17	12.27	12.72	12.50	12.33
Industrial Machinery and Equipment	709.14	730.15	698.86	42.9	43.8	44.4	16.53	16.67	15.74	15.75	14.68	14.33
Electronic and Other Electric Equipment	473.07	539.88	548.55	39.0	44.0	47.7	12.13	12.27	11.50	11.91	11.65	11.48
Transportation Equipment	737.49	746.76	675.13	39.0	39.2	38.1	18.91	19.05	17.72	18.11	17.78	17.60
Other Durable Goods	464.53	452.02	437.08	39.3	38.9	39.2	11.82	11.62	11.15	11.02	10.53	10.40
<b>Nondurable Goods</b>	<b>\$639.56</b>	<b>\$625.91</b>	<b>\$621.09</b>	<b>40.3</b>	<b>40.2</b>	<b>41.6</b>	<b>\$15.87</b>	<b>\$15.57</b>	<b>\$14.93</b>	<b>\$15.10</b>	<b>\$14.82</b>	<b>\$14.01</b>
Food and Kindred Products	487.53	454.69	433.50	44.2	41.0	40.8	11.03	11.09	10.87	10.63	10.20	10.03
Textile Mill Products	493.06	465.34	513.74	43.1	41.4	46.2	11.44	11.24	11.12	11.42	10.98	10.50
Apparel and Other Textile Products	370.67	381.92	383.04	36.7	36.9	38.0	10.10	10.35	10.08	10.21	10.01	9.57
Paper and Allied Products	983.44	948.93	937.43	41.2	42.1	43.1	23.87	22.54	21.75	22.24	21.93	20.23
Leather and Leather Products	385.56	405.65	428.89	36.0	37.7	41.2	10.71	10.76	10.41	10.31	9.80	9.31
Other Nondurable Goods	515.26	502.57	500.48	38.8	38.6	39.1	13.28	13.02	12.80	13.02	12.66	12.12
<b>PORTLAND MSA</b>												
<b>Manufacturing</b>	<b>\$528.28</b>	<b>\$529.17</b>	<b>\$515.10</b>	<b>42.5</b>	<b>42.3</b>	<b>42.5</b>	<b>12.43</b>	<b>12.51</b>	<b>12.12</b>	<b>12.13</b>	<b>11.66</b>	<b>11.42</b>
<b>LEWISTON-AUBURN MSA</b>												
<b>Manufacturing</b>	<b>\$549.02</b>	<b>\$533.87</b>	<b>\$527.94</b>	<b>39.9</b>	<b>39.4</b>	<b>42.0</b>	<b>13.76</b>	<b>13.55</b>	<b>12.57</b>	<b>12.81</b>	<b>12.32</b>	<b>11.86</b>

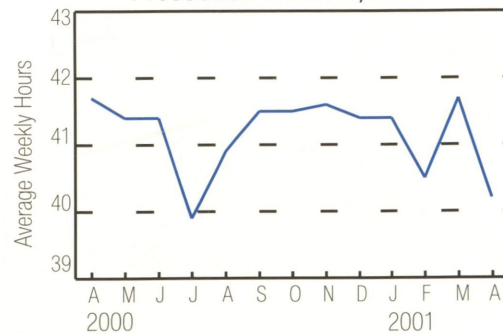
<sup>1</sup> Hours worked and earnings data are computed based on payroll figures for the week including the 12th of the month for manufacturing production workers. Average hourly earnings are calculated on a gross basis, and include such factors as premium pay for overtime and shift differential, as well as changes in basic hourly and incentive rates of pay. Average weekly earnings are the product of weekly hours worked and hourly earnings.

Source: See page 2.

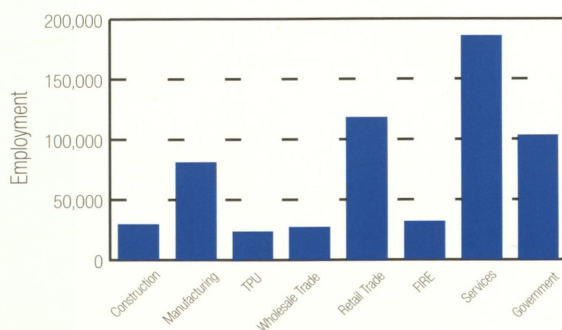
Nonfarm Employment by Sector  
January 1990-April 2001, Maine<sup>1</sup>



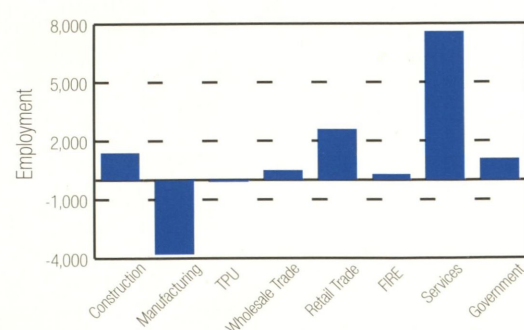
Hours Worked by Manufacturing  
Production Workers, Maine<sup>2</sup>



Nonfarm Employment by Industry Division  
Maine, April 2001<sup>2</sup>



Nonfarm Employment by Industry Division  
Maine, Over-the-Year Change, April 2001<sup>2</sup>



<sup>1</sup> Seasonally Adjusted. <sup>2</sup> Not Seasonally Adjusted.



# Change in Maine Jobs Between 1999 and 2000 by Industry

(Sorted by 2000 Average Wage)

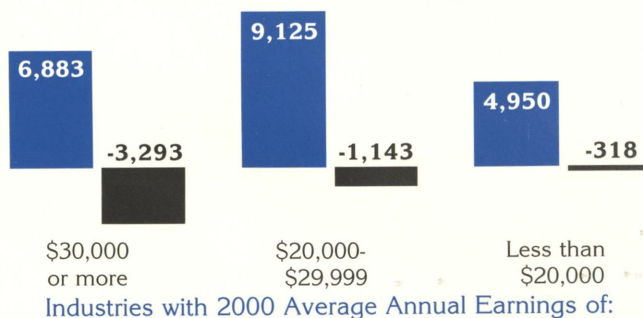
Job Gains		
Industry	Net Change in Jobs	Average Annual Wage
Holding and Investment Offices	40	\$90,809
Securities Dealers, Brokers, and Agents	241	86,146
Metal Mining	0	66,745
Pipelines (excluding Natural Gas)	3	62,964
Federal Gov't	917	44,076
Electrical and Electronic Equipment	448	42,088
Engineering, Accounting, and Management Services	805	41,571
Primary Metal Products	40	39,612
Industrial Machinery and Equipment	292	39,317
Wholesale Trade of Durable Goods	504	38,710
Petroleum Refining and Related Industries	14	37,699
Nondepository Credit Institutions	901	37,040
Fishing, Hunting and Trapping	8	36,312
Fabricated Metal Products	229	32,399
State Gov't	500	31,709
Health Services	1,630	31,695
Depository Credit Institutions	311	30,593
Forestry	85	29,998
Special Trades Construction	1,296	29,357
Building Construction	523	29,201
Printing and Publishing	234	29,056
Trucking and Warehousing	76	28,833
Furniture and Fixtures	18	28,751
Food Products	747	27,982
Water Transportation	165	27,374
Stone, Clay, Glass, and Concrete Products	29	27,193
Transportation Services	139	26,967
Lumber and Wood Products	178	26,781
Automotive Dealers and Service	204	25,554
Real Estate	109	25,304
Local Gov't	1,383	25,264
Business Services	1,674	23,815
Building Materials and Hardware Stores	259	23,798
Automotive Repair Services	198	23,214
Agricultural Production—Livestock	34	22,238
Apparel and Other Textile Products	22	21,753
Home Furniture and Equipment Stores	306	21,521
Miscellaneous Manufacturing	13	21,443
Miscellaneous Retail	1,083	20,723
Agricultural Services	350	20,406
Museums, Art Galleries, and Gardens	23	19,238
Social Services	1,941	18,139
Membership Organizations	110	17,108
Agricultural Production—Crops	11	17,061
Personal Services	128	16,260
Food Stores	702	15,135
Hotels and Lodging	189	14,833
Local Passenger Transportation	80	14,722

Job Gains (cont.)		
Industry	Net Change in Jobs	Average Annual Wage
General Merchandise Stores	245	\$14,574
Motion Pictures	150	14,546
Amusement and Recreation Services	177	13,172
Eating and Drinking Places	1,194	11,270

Job Losses		
Industry	Net Change in Jobs	Average Annual Wage
Miscellaneous Services	(32)	\$55,826
Paper and Allied Products	(530)	52,186
Electric, Gas, and Sanitary Services	(145)	49,452
Chemicals and Allied Products	(56)	46,069
Communications	(52)	43,962
Legal Services	(3)	43,597
Insurance Carriers	(237)	43,503
Heavy Construction	(38)	42,283
Transportation Equipment	(1,301)	39,150
Insurance Brokers and Agents	(254)	37,526
Wholesale Trade of Nondurable Goods	(195)	33,728
Rubber and Plastic Products	(165)	32,992
Miscellaneous Repair Services	(115)	31,061
Transportation by Air	(9)	30,781
Textile Products	(161)	30,635
Instruments	(45)	28,319
Educational Services	(247)	27,688
Leather Products	(848)	25,249
Nonmetallic Minerals, Except Fuels	(3)	24,797
Private Households	(35)	16,069
Apparel and Accessory Stores	(283)	16,031

Employment and wages reported by employers subject to the Maine Employment Security Law. Also included are reported employment and wages for federal government installations within the state. These figures include both full- and part-time employment; the primary exclusion are the self-employed.

## Between 1999 and 2000, Maine Gained and Lost Jobs in Industries Across the Entire Earnings Spectrum



If you do NOT desire to continue receiving this publication, check here ☐ and return this cover to the address below.

If your address has changed, please indicate change and return this cover to the address below.

Maine Department of Labor  
Labor Market Information Services  
20 Union Street  
Augusta, Maine 04330-6826

PRESORTED FIRST CLASS MAIL  
POSTAGE PAID  
US DEPT. OF LABOR  
PERMIT NO. G-12

OFFICIAL BUSINESS  
PENALTY FOR PRIVATE USE \$300  
RETURN SERVICE REQUESTED