

1-1-2001

Labor Market Digest, January 2001

Maine Department of Labor

Maine Center for Workforce Research and Information

Follow this and additional works at: http://digitalmaine.com/cwri_docs

Recommended Citation

Maine Department of Labor and Maine Center for Workforce Research and Information, "Labor Market Digest, January 2001" (2001). *Center for Workforce Research and Information Documents*. Paper 882.
http://digitalmaine.com/cwri_docs/882

This Text is brought to you for free and open access by the Labor at Maine State Documents. It has been accepted for inclusion in Center for Workforce Research and Information Documents by an authorized administrator of Maine State Documents. For more information, please contact statedocs@maine.gov.

L 55/1.28: 2001/1
c.1

MAINE STATE LIBRARY

MAINE DEPARTMENT OF LABOR

Labor Market Information

INSIDE . . .

Cumberland and Knox counties record the lowest unemployment rates at 2.1 percent page 3

Adjusted statewide unemployment rate declines from 3.5 percent in October to 2.5 percent in November ... page 4

Nonfarm employment rises by 9,900 over the year, led by services industries page 6

Fourteen Maine counties recorded job gains page 8

A publication of
the

MAINE DEPARTMENT OF LABOR
Labor Market
Information Services

Raynold A. Fongemie
Division Director

Dana A. Evans
Editor

For more information, call

Telephone (207) 287-2271
FAX (207) 287-2947
TTY 1-800-794-1110
E-Mail - Imi.me@state.me.us

Visit our Home Page at
<http://janus.state.me.us/labor/Imis/frdef.htm>

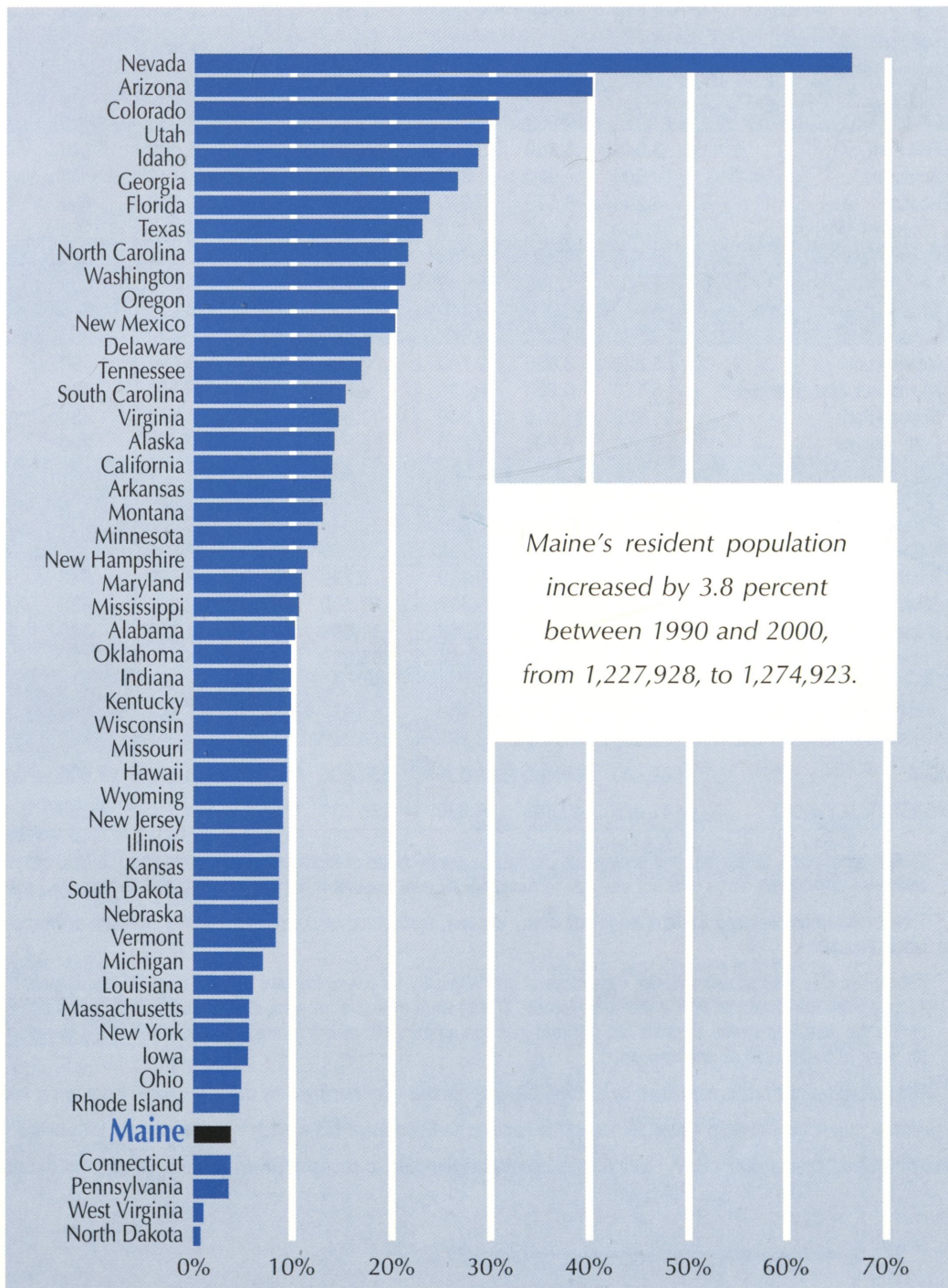
LIBRARY USE ONLY LABOR MARKET DIGEST

November Data

January 2001

Percent Change of the Resident Population by State April 1, 1990 to April 1, 2000

The nation's resident population on April 1, 2000 was 281,421,906, a 13.2 percent increase over the count of 248,709,873 for April 1, 1990. State rates of population growth ranged from 0.5 percent for North Dakota to 66.3 percent for Nevada.



FEB 08 2001

Civilian Labor Force, Employed, and Unemployed by Labor Market Area, Not Seasonally Adjusted

AREA	CIVILIAN LABOR FORCE ¹			EMPLOYED ²			UNEMPLOYED ³			UNEMPLOYMENT RATE ⁴		
	Nov 00	Oct 00	Nov 99	Nov 00	Oct 00	Nov 99	Nov 00	Oct 00	Nov 99	Nov 00	Oct 00	Nov 99
LABOR MARKET AREAS												
Augusta	45,390	45,810	46,250	44,180	44,150	44,480	1,210	1,660	1,770	2.7%	3.6%	3.8%
Bangor MSA	53,900	54,500	53,600	52,900	53,300	52,300	1,000	1,200	1,300	1.9	2.2	2.5
Bath-Brunswick	34,400	35,700	35,820	33,790	34,930	34,820	610	770	990	1.8	2.2	2.8
Belfast	16,730	16,920	16,380	16,300	16,460	15,740	420	470	650	2.5	2.8	3.9
Biddeford	39,300	40,960	37,570	38,570	40,260	36,600	730	700	980	1.9	1.7	2.6
Boothbay Harbor	8,610	9,190	8,540	8,440	9,090	8,300	170	100	240	1.9	1.1	2.8
Bucksport	5,360	5,360	5,140	5,200	5,190	4,900	150	160	240	2.9	3.1	4.7
Calais	5,370	5,280	5,490	4,970	4,830	4,890	400	450	600	7.4	8.5	10.9
Dexter-Pittsfield	12,110	12,110	12,130	11,480	11,410	11,170	630	700	960	5.2	5.8	7.9
Dover-Foxcroft	7,380	7,420	7,370	6,970	6,910	6,890	410	520	480	5.6	6.9	6.5
Ellsworth-Bar Harbor	20,400	21,690	20,050	19,470	21,150	18,820	930	540	1,220	4.5	2.5	6.1
Farmington	17,380	17,650	18,540	16,340	16,500	17,050	1,040	1,160	1,480	6.0	6.5	8.0
Fort Kent	3,940	3,950	3,890	3,830	3,780	3,680	110	170	220	2.9	4.4	5.5
Greenville	860	910	850	820	860	770	40	50	80	5.1	5.3	9.1
Houlton	6,260	6,170	6,310	6,100	5,980	6,060	160	180	250	2.5	3.0	4.0
Jonesport-Milbridge	4,550	4,160	4,970	4,400	4,000	4,680	150	160	290	3.3	3.8	5.7
Kittery-York ⁵	20,880	20,860	20,660	20,660	20,510	20,440	220	350	220	1.1	1.7	1.0
Lewiston-Auburn MSA	55,100	54,900	55,900	53,800	53,200	54,100	1,300	1,700	1,900	2.3	3.1	3.3
Lincoln-Howland	6,030	6,020	6,140	5,780	5,700	5,790	260	320	350	4.2	5.3	5.6
Machias-Eastport	6,960	6,960	6,980	6,690	6,530	6,590	280	430	390	4.0	6.1	5.6
Madawaska	3,820	3,850	3,740	3,730	3,760	3,590	80	90	150	2.2	2.3	4.1
Millinocket-East Millinocket	5,130	5,200	5,330	4,870	4,890	4,960	260	310	370	5.1	6.0	6.9
Norway-Paris	11,820	11,910	11,900	11,390	11,400	11,270	430	510	630	3.7	4.3	5.3
Outer Bangor	9,090	9,290	8,830	8,810	8,900	8,400	280	380	440	3.1	4.1	4.9
Patten-Island Falls	1,820	1,880	1,900	1,740	1,760	1,740	80	120	170	4.4	6.4	8.8
Portland MSA	141,800	141,300	134,600	140,000	139,000	131,800	1,900	2,300	2,900	1.3	1.6	2.1
Presque Isle-Caribou	21,070	21,150	21,360	20,540	20,610	20,600	530	530	750	2.5	2.5	3.5
Rockland	23,080	23,490	22,900	22,650	23,000	22,320	430	480	580	1.9	2.1	2.5
Rumford	9,830	9,950	10,310	9,290	9,320	9,560	540	630	750	5.5	6.4	7.3
Sanford	22,570	22,550	23,310	21,750	21,640	22,290	830	910	1,020	3.7	4.0	4.4
Sebago Lakes Region	11,920	13,010	12,950	11,580	12,630	12,310	340	380	640	2.9	2.9	4.9
Skowhegan	16,630	16,820	17,380	15,850	15,920	16,030	780	900	1,350	4.7	5.4	7.8
Stonington	6,300	6,370	6,100	6,170	6,240	5,920	130	130	190	2.1	2.0	3.1
Van Buren	1,460	1,440	1,470	1,410	1,400	1,400	50	40	70	3.5	2.5	4.9
Waterville	25,090	24,780	25,290	24,370	23,830	24,160	720	960	1,140	2.9	3.9	4.5
MAINE	682,400	689,500	680,000	664,800	669,000	654,300	17,600	20,400	25,700	2.6	3.0	3.8
UNITED STATES (000)	141,025	140,893	139,895	135,731	135,771	134,515	5,295	5,122	5,380	3.8	3.6	3.8

¹ Civilian labor force, employed, and unemployed estimates are by place of residence. Current month estimates are preliminary; prior month and year-ago estimates are revised. Items may not add due to rounding. All data exclude members of the Armed Forces. MSA stands for Metropolitan Statistical Area.

² Total employment includes nonfarm wage and salary workers, agricultural workers, unpaid family workers, domestics, the self employed, and workers involved in labor disputes.

³ People are classified as unemployed, regardless of their eligibility for unemployment benefits or public assistance, if they meet all of the following criteria: 1) they were not employed during the survey week; 2) they were available for work at that time; and 3) they made specific efforts to find employment some time during the prior four weeks. Persons laid off from their former jobs and awaiting recall and those expecting to report to a job within 30 days need not be looking for work to be counted as unemployed.

⁴ The unemployment rate is calculated by dividing the total number of unemployed by the total civilian labor force, and is expressed as a percent.

⁵ Kittery-York is the five-town Maine portion of the Portsmouth-Rochester PMSA which includes towns in both Maine and New Hampshire.

Source: Maine Department of Labor, Labor Market Information Services, in cooperation with the U.S. Department of Labor, Bureau of Labor Statistics.

Selected Regular Unemployment Compensation Program Indicators

Key Data	Nov 2000	Oct 2000	Nov 1999
Average Duration	14.2	14.3	12.5
Average Weekly Benefit Amount*	\$203.25	\$203.90	\$190.81
Exhaustees	463	450	734

* For totally unemployed claimants, excluding dependency allowances.

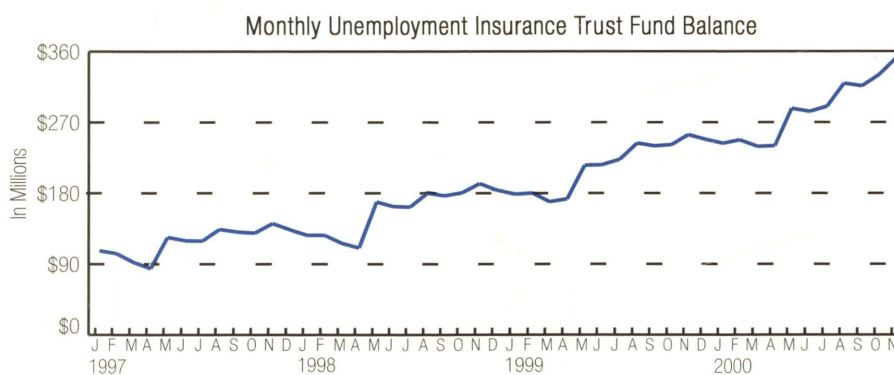
Weekly Initial Claims

Week	12/9	12/2	11/25	11/18	11/11	11/4	10/28
2000	2,120	1,704	1,318	1,457	1,663	1,554	1,300
Week	12/11	12/4	11/27	11/20	11/13	11/6	10/30
1999	1,864	1,764	1,208	1,742	1,348	1,433	1,399

Continued Claims Less Partial*

Nov 2000	Oct 2000	Nov 1999
5,507	3,853	4,696

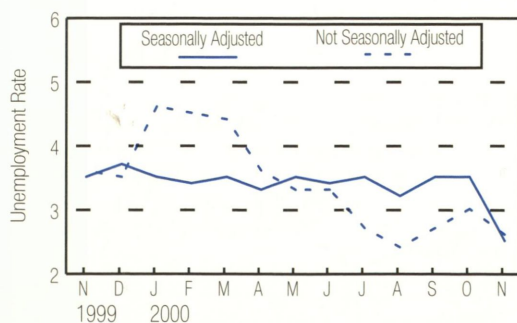
* For the week including the 12th of the month.



work stoppage at Bath Iron Works. Normal seasonal losses were recorded in lodging services, restaurants, and construction.

Between November 1999 and November 2000, not-seasonally adjusted nonfarm wage and salary employment rose by 9,900. Services increased by 4,400, with gains in social services, business services, health services, educational services, and other services. Retail trade increased by 2,200, mainly in food stores and other retail trade. Construction rose by 1,600 and wholesale trade increased by 800. Manufacturing jobs fell by 1,000.

Unemployment Rates for Maine

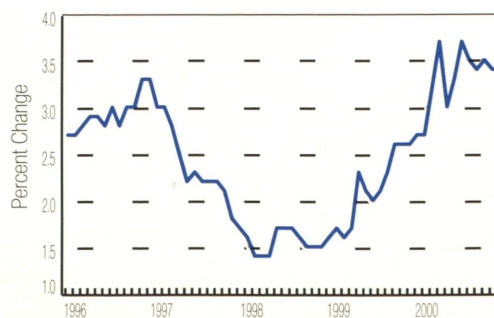


U.S. Consumer Price Index for all urban consumers (CPI-U)

Item	Nov 00	Oct 00	Nov 99	Dec 99
(1982-1984 = 100) All Items	174.1	174.0	168.3	168.3

Percent Change from Prior Month	+0.1%
Percent Change from 12 Months Ago	+3.4%
Percent change from Last December	+3.4%

Over-the-Year Change in CPI-U



Nonfarm Wage and Salary Employment, Not Seasonally Adjusted (in thousands)

INDUSTRY	MAINE			PORTLAND MSA			LEWISTON-AUBURN MSA		
	Nov 00	Oct 00	Nov 99	Nov 00	Oct 00	Nov 99	Nov 00	Oct 00	Nov 99
Nonfarm Wage and Salary Employment¹	610.2	607.2	600.3	156.4	155.5	152.2	46.7	46.2	46.4
Goods Producing	118.4	114.1	117.8	23.6	23.1	22.0	9.4	9.4	10.0
Mining	0.1	0.1	0.1	*	*	*	*	*	*
Construction	31.9	33.3	30.3	7.8	7.9	7.1	1.7	1.7	1.8
Building Construction	7.3	7.4	7.0	1.6	1.6	1.4	*	*	*
Heavy Construction	5.4	5.9	5.7	*	*	*	*	*	*
Special Trade Contractors	19.2	20.0	17.6	5.7	5.8	5.2	*	*	*
Manufacturing	86.4	80.7	87.4	15.8	15.2	14.9	7.7	7.7	8.2
Durable Goods	44.3	38.5	44.2	8.3	7.7	7.5	2.4	2.4	2.4
Lumber and Wood Products	11.1	11.0	10.7	*	*	*	*	*	*
Primary and Fabricated Metals	3.8	3.9	3.8	*	*	*	*	*	*
Industrial Machinery and Equipment	4.7	4.7	4.5	1.6	1.6	1.6	*	*	*
Electronic and Other Electrical Equipment	7.7	7.7	7.5	3.0	2.9	2.9	*	*	*
Transportation Equipment	10.8	6.0	11.3	*	*	*	*	*	*
Other Durable Goods	6.2	5.2	6.4	3.7	3.2	3.0	*	*	*
Nondurable Goods	42.1	42.2	43.2	7.5	7.5	7.4	5.3	5.3	5.8
Food and Kindred Products	6.6	6.6	6.4	2.5	2.5	2.3	*	*	*
Textile Mill Products	3.3	3.4	3.2	*	*	*	*	*	*
Apparel and Other Textile Products	2.5	2.5	2.5	*	*	*	*	*	*
Paper and Allied Products	13.2	13.1	13.7	*	*	*	*	*	*
Printing and Publishing	6.5	6.4	6.3	1.7	1.7	1.6	*	*	*
Rubber and Misc. Plastic Products	2.7	2.7	3.0	*	*	*	*	*	*
Leather and Leather Products	5.2	5.3	6.1	0.7	0.7	0.8	0.7	0.7	1.0
Other Nondurable Goods	2.1	2.2	2.0	2.6	2.6	2.7	4.6	4.6	4.8
Service Producing	491.8	493.1	482.5	132.8	132.4	130.2	37.3	36.8	36.4
Transportation and Public Utilities	24.7	25.0	24.1	7.8	8.0	6.7	2.0	2.1	2.0
Wholesale Trade	28.7	28.8	27.9	9.7	9.6	9.1	2.4	2.5	2.5
Retail Trade	126.1	125.3	123.9	35.4	34.2	35.3	9.5	8.9	9.6
General Merchandise Stores	13.6	13.1	13.3	*	*	*	*	*	*
Food Stores	23.5	23.2	22.8	*	*	*	*	*	*
Automotive Sales and Services	14.2	14.4	14.2	*	*	*	*	*	*
Eating and Drinking Places	33.2	35.5	33.3	9.0	9.7	8.5	*	*	*
Other Retail Trade	41.6	39.1	40.3	*	*	*	*	*	*
Finance, Insurance, and Real Estate	30.8	30.9	30.8	13.3	13.4	13.9	2.7	2.6	2.4
Banking	9.5	9.5	9.3	*	*	*	*	*	*
Insurance Carriers, Brokers and Agents	12.2	12.3	12.6	*	*	*	*	*	*
Other Finance, Insurance, and Real Estate	9.1	9.1	8.9	*	*	*	*	*	*
Services	178.9	182.6	174.5	46.6	47.3	45.8	15.4	15.5	14.8
Hotels and Other Lodging Places	9.3	11.8	9.0	*	*	*	*	*	*
Business Services	24.4	24.3	23.8	*	*	*	*	*	*
Health Services	57.3	57.5	56.7	*	*	*	*	*	*
Educational Services	17.8	17.8	17.2	*	*	*	*	*	*
Social Services	25.6	25.4	23.8	*	*	*	*	*	*
Other Services	44.5	45.8	44.0	*	*	*	*	*	*
Government	102.6	100.5	101.3	18.7	17.7	19.4	5.3	5.2	5.1
Federal	13.7	13.5	13.6	2.6	2.6	2.5	0.3	0.3	0.3
State	28.6	28.5	28.1	5.3	5.3	5.2	0.8	0.8	0.7
Local ²	60.3	58.5	59.6	12.1	12.0	11.7	4.2	4.1	4.1

¹ Nonfarm wage and salary employment estimates include all full- and part-time wage and salary workers who worked during or received pay for the pay period which includes the 12th of the month. Domestic workers in private households, proprietors, the self-employed, and unpaid family workers are excluded. Estimates measure the number of jobs by industry. Current month's estimates are preliminary; prior month and year-ago estimates are revised. These estimates are benchmarked to March 1998. As a measure of reliability, the March 1998 benchmark revision for total nonfarm wage and salary employment was .07 percent higher than the original sample-based estimate.

² Regular teachers are included in summer months whether or not specifically paid in those months.

* Where an employment estimate is not entered, either the data is not available in sufficient detail for publication or is nondisclosable by law.

Source: See page 2.

Civilian Labor Force, Employed, and Unemployed by County, Not Seasonally Adjusted¹

AREA	CIVILIAN LABOR FORCE			EMPLOYED			UNEMPLOYED			UNEMPLOYMENT RATE		
	Nov 00	Oct 00	Nov 99	Nov 00	Oct 00	Nov 99	Nov 00	Oct 00	Nov 99	Nov 00	Oct 00	Nov 99
COUNTY												
Androscoggin	61,430	61,290	62,670	59,960	59,370	60,330	1,470	1,920	2,330	2.4%	3.1%	3.7%
Aroostook	37,960	38,030	38,290	36,970	36,890	36,690	1,000	1,140	1,610	2.6	3.0	4.2
Cumberland	147,540	148,090	142,060	145,460	145,550	138,820	2,080	2,530	3,240	1.4	1.7	2.3
Franklin	14,690	14,910	15,530	13,800	13,930	14,400	890	980	1,130	6.1	6.6	7.3
Hancock	29,360	30,550	28,660	28,230	29,840	27,140	1,130	710	1,530	3.8	2.3	5.3
Kennebec	60,130	60,290	61,030	58,510	58,080	58,630	1,620	2,210	2,400	2.7	3.7	3.9
Knox	20,200	20,530	20,050	19,810	20,120	19,520	390	410	530	2.0	2.0	2.7
Lincoln	17,140	17,950	17,200	16,790	17,590	16,720	350	370	480	2.1	2.0	2.8
Oxford	25,500	26,170	26,520	24,410	24,880	24,890	1,090	1,290	1,630	4.3	4.9	6.1
Penobscot	80,780	81,760	80,520	78,630	79,110	77,470	2,150	2,640	3,050	2.7	3.2	3.8
Piscataquis	8,360	8,450	8,340	7,890	7,880	7,760	460	570	580	5.6	6.7	7.0
Sagadahoc	16,030	16,670	16,750	15,800	16,340	16,290	230	330	470	1.4	2.0	2.8
Somerset	25,830	25,920	26,550	24,600	24,560	24,620	1,230	1,360	1,940	4.8	5.3	7.3
Waldo	22,530	22,710	22,210	21,950	22,050	21,300	580	660	910	2.6	2.9	4.1
Washington	17,300	16,850	17,850	16,460	15,820	16,550	850	1,030	1,300	4.9	6.1	7.3
York	97,610	99,300	95,790	95,560	97,030	93,220	2,050	2,270	2,570	2.1	2.3	2.7
MAINE	682,400	689,500	680,000	664,800	669,000	654,300	17,600	20,400	25,700	2.6	3.0	3.8
UNITED STATES (000)	141,025	140,893	139,895	135,731	135,771	134,515	5,295	5,122	5,380	3.8	3.6	3.8

¹ See page 2 for footnotes 1 through 4 and source.

Area Analyst's Corner

Central Maine

Ken Bridges (207) 624-5199

L.L. Bean in Waterville laid off approximately 250 seasonal workers. ♦ In Augusta, **EnvisioNet** laid off 25 supervisory employees. ♦ **RGIS Inventory Specialists** in Augusta is hiring part-time workers for product inventory. The company currently has 50 employees and would like to double that number. ♦ A new **99 Steakhouse** is opening in early spring at the Comfort Inn in Augusta. ♦ **Irving Tanning** in Hartland recently laid off 35 workers. ♦ **Solon Manufacturing** laid off 39 workers from their Solon and Skowhegan facilities.

Western Maine

Gerard Dennison (207) 753-9045

The **Lewiston-Auburn Metropolitan Statistical Area (MSA)** economy broke two more records in November. The MSA jobless rate fell to its lowest monthly level ever, 2.3 percent, breaking the previous 40-year low of 2.4 percent set in August 2000. The number of jobs in the MSA reached 46,600, breaking the previous record of 46,400 set in November 1999. ♦ **C.V. Finer Foods** in Winthrop, which produces specialty cooking and marinated sauces, will be moving to Auburn in 2001. The company will provide about 30 jobs.

North/East Maine

Craig Holland (207) 941-3076

Telford Aviation Services at the Bangor International Airport (BIA) is planning for a \$36 million, 15,000 square foot expansion of their facility at BIA. This will add an additional 10 jobs to their current workforce. Telford makes alterations and repairs to commercial, corporate, and private aircraft. ♦ A depressed market for softwood lumber has been cited as the reason for the temporary shutdown of two sawmills: **Pinkham Lumber** in Ashland and **Geogia Pacific** in Woodland. Approximately 250 workers have been temporarily laid off.

Southern Maine

Merrill Huhtala (207) 822-0216

BroadcastAmerica.com filed for bankruptcy and subsequently laid off their Portland workforce. ♦ **Harvard.net** announced the closing of their 50-person office in Westbrook as of January 15. ♦ **Gofish.com** laid off 20 Portland employees, reducing their workforce to 130. ♦ **Bradlee's** announced the closure of all stores, including their Westbrook location. ♦ Business is booming for **AEP Proserv Northeast**, one of Maine's largest engineering firms, based in South Portland. The company currently employs 79 and anticipates having 140 on board soon.

Civilian Labor Force, Employed, and Unemployed in Maine, Seasonally Adjusted (in thousands)

ITEM	2000											1999	
	Nov	Oct	Sept	Aug	Jul	Jun	May	Apr	Mar	Feb	Jan	Dec	Nov
Civilian Labor Force	686.8	687.5	691.2	689.3	691.0	697.4	700.4	698.4	696.0	695.3	692.1	686.9	683.7
Employed	669.5	663.7	667.2	667.0	667.1	673.5	675.8	675.3	671.5	671.8	667.8	661.8	658.3
Unemployed	17.3	23.8	24.0	22.3	23.9	23.8	24.7	23.1	24.5	23.6	24.3	25.1	25.5
Unemployment Rate (%)	2.5	3.5	3.5	3.2	3.5	3.4	3.5	3.3	3.5	3.4	3.5	3.7	3.7

¹ See page 2 for footnotes 1 through 4 and source.

Nonfarm Wage and Salary Employment in Maine, Seasonally Adjusted¹ (in thousands)

INDUSTRY	2000												1999	
	Nov	Oct	Sept	Aug	Jul	Jun	May	Apr	Mar	Feb	Jan	Dec	Nov	
Nonfarm Wage and Salary Employment ²	602.0	596.5	595.2	598.2	599.8	596.8	600.8	601.3	599.2	597.7	593.1	593.1	591.8	
Construction	30.6	30.7	30.4	30.8	30.2	30.4	29.4	31.0	30.7	30.8	29.7	29.4	29.1	
Manufacturing	84.9	80.4	79.9	85.6	85.6	85.4	85.6	85.9	86.0	86.4	86.2	86.2	86.2	
Durable Goods	43.1	38.3	38.1	43.1	43.7	43.1	43.2	43.4	43.3	43.4	43.3	43.2	43.2	
Nondurable Goods	41.8	42.1	41.8	42.5	41.9	42.3	42.4	42.5	42.7	43.0	42.9	43.0	43.0	
Transportation and Public Utilities	24.6	24.6	24.7	23.3	24.8	24.3	24.3	24.3	24.0	23.8	23.8	23.9	23.9	
Wholesale Trade	28.8	28.7	28.5	28.2	28.3	27.9	28.0	28.1	28.0	28.1	28.1	27.9	27.8	
Retail Trade	122.9	123.0	122.1	121.6	121.3	120.5	121.6	122.5	121.8	121.7	120.9	120.9	120.6	
Finance, Insurance, and Real Estate	31.2	31.1	30.8	30.8	30.6	30.3	30.6	31.1	31.1	31.1	31.1	31.1	31.2	
Services	180.9	180.8	180.5	180.7	180.8	179.7	180.5	180.6	178.6	178.0	176.2	176.9	176.3	
Government	98.0	97.1	98.2	97.1	98.1	98.2	100.7	97.7	98.9	97.7	97.0	96.7	96.6	

¹ See footnotes 1 and 2 on page 6. ² Mining employment is not suitable for seasonal adjustment because it has very little seasonal and irregular movement. Thus, the not-seasonally-adjusted series is used as a component of the seasonally adjusted total nonfarm wage and salary employment estimate. Source: See page 2.

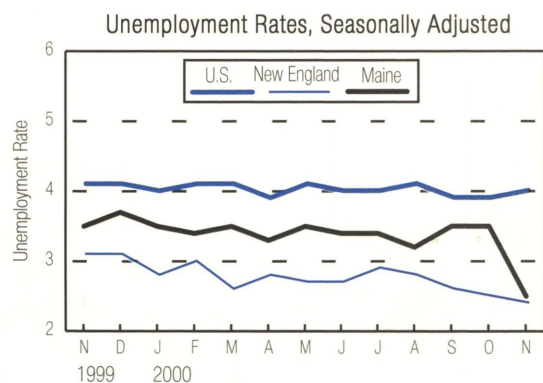
November Unemployment Rate Falls to 2.5 Percent

State Labor Commissioner Valerie Landry announced that the seasonally-adjusted unemployment rate for Maine fell to 2.5 percent in November, the lowest seasonally-adjusted rate on record. The previous low of 3.2 percent was recorded for August 2000. Seasonally-adjusted rates for Maine are available back to January 1978.

"The tight labor market Maine has experienced this year is the result of continued job growth and a low supply of available labor. Seasonally-adjusted unemployment rates have been low all year, ranging from 3.2 percent to 3.5 percent," said Commissioner Landry. "The drop of the unemployment rate from 3.5 percent in October to 2.5 percent in November is unusually large, and we will have to evaluate the unemployment rates for the next couple of months before attaching too much significance to the November rate."

Between October and November, seasonally-adjusted nonfarm wage and salary employment increased by 5,500 to 602,000, largely in manufacturing due to the end of the labor dispute at Bath Iron Works. Between November 1999 and November 2000, seasonally-adjusted nonfarm wage and salary employment rose by 10,200, with job growth in services; retail trade; construction; wholesale trade; and transportation, communication, and public utilities.

Other New England states reporting seasonally-adjusted unemployment rates for November include Connecticut, 1.7 percent; New Hampshire, 1.8 percent; and Vermont, 2.8 percent. The adjusted national rate was 4.0 percent in November, up from



3.9 percent in October and down from 4.1 percent in November 1999.

The not-seasonally-adjusted Maine unemployment rate for November was 2.6 percent, down from 3.0 percent in October and 3.8 percent in November 1999. The unadjusted national rate was 3.8 percent, up from 3.6 percent in October and unchanged from November 1999. Not-seasonally-adjusted unemployment rates for Maine counties ranged from 1.4 percent in Cumberland and Sagadahoc counties to 6.1 percent in Franklin County.

Not-seasonally-adjusted nonfarm wage and salary employment rose by 3,000 between October and November. Local government added jobs due to temporary hiring for elections, miscellaneous retail trade establishments geared up for the holidays, and manufacturing jobs increased due to the end of the

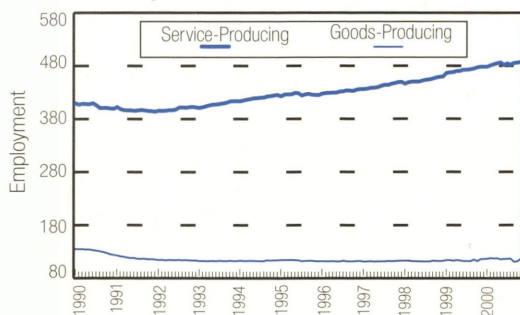
Earnings and Hours of Production Workers in Manufacturing Industries¹ Not Seasonally Adjusted

AREA AND INDUSTRY	AVERAGE WEEKLY EARNINGS			AVERAGE WEEKLY HOURS			AVERAGE HOURLY EARNINGS			ANNUAL AVERAGE HOURLY EARNINGS		
	Nov 00	Oct 00	Nov 99	Nov 00	Oct 00	Nov 99	Nov 00	Oct 00	Nov 99	1999	1998	1997
STATEWIDE												
Manufacturing	\$602.76	\$598.02	\$586.60	41.2	41.5	41.9	\$14.63	\$14.41	\$14.00	\$13.97	\$13.49	\$13.12
Durable Goods	568.26	557.27	551.67	41.0	41.9	42.6	13.86	13.30	12.95	13.12	12.99	12.72
Lumber and Wood Products	470.61	483.49	476.06	41.5	42.3	43.2	11.34	11.43	11.02	10.84	10.46	10.32
Primary and Fabricated Metals	578.20	521.43	543.69	41.3	39.0	43.6	14.00	13.37	12.47	12.52	12.33	11.55
Industrial Machinery and Equipment	724.80	728.69	696.61	45.3	45.6	45.5	16.00	15.98	15.31	14.67	14.33	14.66
Electronic and Other Electric Equipment	522.87	527.00	571.39	43.5	44.1	51.2	12.02	11.95	11.16	11.65	11.48	11.13
Transportation Equipment	721.88	713.02	642.55	38.5	38.5	36.2	18.75	18.52	17.75	17.78	17.60	16.77
Other Durable Goods	417.01	449.67	401.32	37.3	39.9	39.5	11.18	11.27	10.16	10.53	10.40	10.27
Nondurable Goods	641.59	635.41	622.67	41.5	41.1	41.1	15.46	15.46	15.15	14.87	14.01	13.50
Food and Kindred Products	483.05	464.98	428.43	45.7	44.2	42.8	10.57	10.52	10.01	10.19	10.03	9.85
Textile Mill Products	517.81	509.58	493.73	44.6	44.7	44.4	11.61	11.40	11.12	10.98	10.50	9.97
Apparel and Other Textile Products	383.17	396.17	454.53	37.9	38.5	42.4	10.11	10.29	10.72	10.02	9.57	9.52
Paper and Allied Products	949.49	949.09	943.25	41.3	41.7	41.1	22.99	22.76	22.95	21.94	20.23	19.44
Leather and Leather Products	418.40	416.30	409.82	41.1	39.2	40.9	10.18	10.62	10.02	9.78	9.31	8.88
Other Nondurable Goods	533.07	536.54	499.20	38.6	38.6	38.4	13.81	13.90	13.00	12.66	12.12	11.65
PORTLAND MSA												
Manufacturing	546.16	537.68	540.56	45.1	44.4	46.4	12.11	12.11	11.65	11.63	11.42	11.28
LEWISTON-AUBURN MSA												
Manufacturing	562.42	549.95	532.55	42.9	42.5	41.9	13.11	12.94	12.71	12.33	11.86	11.13

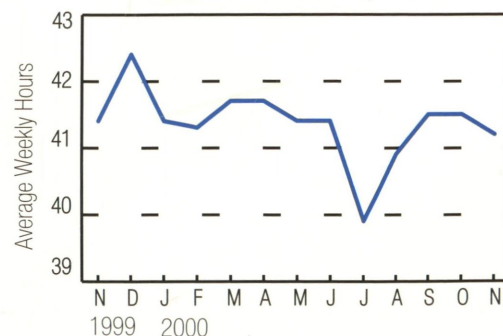
¹ Hours worked and earnings data are computed based on payroll figures for the week including the 12th of the month for manufacturing production workers. Average hourly earnings are calculated on a gross basis, and include such factors as premium pay for overtime and shift differential, as well as changes in basic hourly and incentive rates of pay. Average weekly earnings are the product of weekly hours worked and hourly earnings.

Source: See page 2.

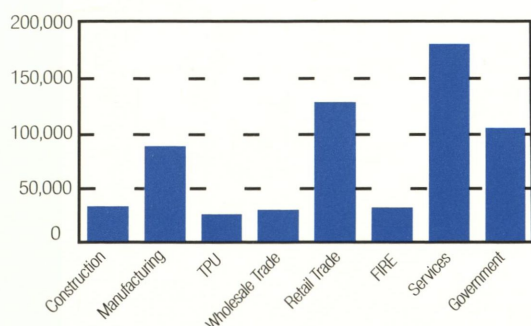
Nonfarm Employment by Sector
January 1990-November 2000, Maine¹



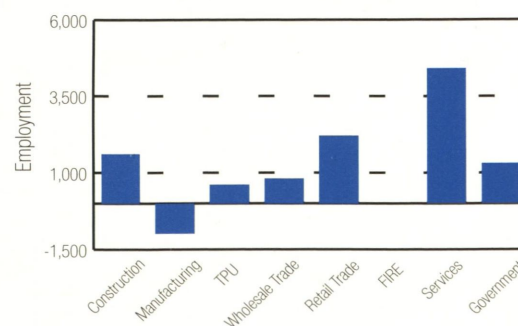
Hours Worked by Manufacturing
Production Workers, Maine²



Nonfarm Employment by Industry Division
Maine, November 2000²



Nonfarm Employment by Industry Division
Maine, Over-the-Year Change, November 2000²



¹ Seasonally Adjusted. ² Not Seasonally Adjusted.

Employment by Major Industry Division for Maine Counties¹

	Androscoggin	Arctostook	Cumberland	Franklin	Hancock	Kennebec	Knox	Lincoln	Oxford	Penobscot	Piscataquis	Sagadahoc	Somerset	Waldo	Washington	York
Second Quarter 1999																
Agriculture, Forestry, and Fishing	523	738	1,539	76	377	526	427	161	216	544	62	122	162	93	418	798
Mining and Construction	1,920	886	7,513	663	1,635	2,232	1,042	582	921	2,656	107	837	1,602	494	527	2,610
Manufacturing	8,372	4,813	15,915	3,026	2,818	4,825	1,996	1,057	4,106	8,678	1,907	7,776	5,074	1,553	1,853	11,569
Transportation and Public Utilities	1,857	1,600	7,025	255	904	1,825	839	357	602	3,741	217	259	650	307	539	1,232
Wholesale Trade	2,517	808	9,289	172	420	3,036	816	227	227	3,152	103	494	407	170	479	2,165
Retail Trade	8,855	5,687	34,503	2,639	5,364	10,315	3,375	2,987	3,090	13,724	1,065	2,022	2,983	2,147	2,340	15,072
Finance, Insurance, and Real Estate	2,619	1,094	14,062	363	746	1,659	1,073	469	468	2,316	86	287	366	1,342	336	1,780
Services	14,314	8,354	49,913	2,790	6,673	15,520	4,648	3,161	4,915	19,061	1,036	2,480	5,305	2,305	2,527	15,659
Federal Government	380	771	3,136	89	427	1,629	120	101	164	1,407	59	368	162	130	309	4,107
State Government	477	973	4,291	389	532	8,705	702	72	314	4,731	12	17	515	61	383	352
Local Government	4,372	3,984	12,492	1,367	2,204	5,404	1,669	1,562	2,611	6,881	1,098	1,511	2,262	1,466	1,915	7,336
Total	46,207	29,708	159,680	11,831	22,099	55,677	16,708	10,737	17,633	66,894	5,753	16,172	19,488	10,068	11,628	62,680
Second Quarter 2000																
Agriculture, Forestry, and Fishing	509	691	1,531	84	432	550	443	191	257	599	62	127	163	96	502	742
Mining and Construction	2,391	849	8,092	592	1,813	2,412	1,076	658	964	2,683	115	1,169	2,232	535	453	2,778
Manufacturing	8,031	5,020	15,908	2,877	2,790	4,880	2,005	1,020	4,150	8,601	1,921	7,349	5,166	1,528	1,847	12,761
Transportation and Public Utilities	1,809	1,518	7,578	252	977	1,950	866	371	570	4,224	226	235	624	370	523	1,215
Wholesale Trade	2,647	765	9,859	280	382	3,040	913	209	234	3,299	96	298	449	119	459	1,886
Retail Trade	9,085	5,403	36,024	2,555	5,543	11,130	3,460	3,038	3,287	14,344	1,040	2,090	3,066	2,285	2,247	15,802
Finance, Insurance, and Real Estate	2,566	1,224	13,880	508	784	1,544	1,205	487	496	2,552	95	276	382	1,934	341	1,742
Services	15,211	8,665	52,845	2,686	6,885	16,374	4,931	3,392	4,764	19,389	1,103	3,069	5,157	2,531	2,512	16,370
Federal Government	454	834	3,428	139	413	1,570	121	101	246	2,328	61	404	172	115	317	4,395
State Government	534	1,053	4,120	405	540	8,908	696	80	331	4,853	16	31	527	60	436	384
Local Government	4,615	4,052	13,008	1,383	2,399	5,518	1,792	1,586	2,708	6,995	1,098	1,557	2,265	2,525	1,964	7,437
Total	47,851	30,073	166,271	11,760	22,958	57,876	17,507	11,134	18,008	69,867	5,834	16,603	20,203	11,100	11,600	65,513
Change, Second Quarter 1999 to Second Quarter 2000																
Agriculture, Forestry, and Fishing	-14	-47	-8	8	55	24	16	30	41	55	0	5	1	3	84	-56
Mining and Construction	471	-37	579	-71	178	180	34	76	43	27	8	332	630	41	-74	168
Manufacturing	-341	207	-7	-149	-28	55	9	-37	44	-77	14	-427	92	-25	-6	1,192
Transportation and Public Utilities	-48	-82	553	-3	73	125	27	14	-32	483	9	-24	-26	63	-16	-17
Wholesale Trade	130	-43	570	108	-38	4	97	-18	7	147	-7	-196	42	-51	-20	-279
Retail Trade	230	-284	1,521	-84	179	815	85	51	197	620	-25	68	83	138	-93	730
Finance, Insurance, and Real Estate	-53	130	-182	145	38	-115	132	18	28	236	9	-11	16	592	5	-38
Services	897	311	2,932	-104	212	854	283	231	-151	328	67	589	-148	226	-15	711
Federal Government	74	63	292	50	-14	-59	1	0	82	921	2	36	10	-15	8	288
State Government	57	80	-171	16	8	203	-6	8	17	122	4	14	12	-1	53	32
Local Government	243	68	516	16	195	114	123	24	97	114	0	46	3	59	49	101
Total	1,644	365	6,591	-71	859	2,199	799	397	375	2,973	81	431	715	1,032	-28	2,833

¹ Employment reported by employers subject to the Maine Employment Security Law. Also included is reported employment of federal government installations within the state.

If you do **NOT** desire to continue receiving this publication, check here ☐ and return this cover to the address below.

If your address has changed, please indicate change and return this cover to the address below.

Maine Department of Labor
Labor Market Information Services
20 Union Street
Augusta, Maine 04330-6826

PRESORTED FIRST CLASS MAIL
POSTAGE PAID
US DEPT. OF LABOR
PERMIT NO. G-12

OFFICIAL BUSINESS
PENALTY FOR PRIVATE USE \$300
RETURN SERVICE REQUESTED