

9-1-2000

Labor Market Digest, September 2000

Maine Department of Labor

Maine Center for Workforce Research and Information

Follow this and additional works at: http://digitalmaine.com/cwri_docs

Recommended Citation

Maine Department of Labor and Maine Center for Workforce Research and Information, "Labor Market Digest, September 2000" (2000). *Center for Workforce Research and Information Documents*. Paper 878.
http://digitalmaine.com/cwri_docs/878

This Text is brought to you for free and open access by the Labor at Maine State Documents. It has been accepted for inclusion in Center for Workforce Research and Information Documents by an authorized administrator of Maine State Documents. For more information, please contact statedocs@maine.gov.

MAINE DEPARTMENT OF LABOR

Labor Market Information

INSIDE . . .

Five counties record unemployment rates below 2.0 percent page 3

Adjusted statewide unemployment rate remains unchanged at 3.4 percent in July page 4

Nonfarm employment rises by 14,200 over the year, led by services industries page 6

A publication of
the

MAINE DEPARTMENT OF LABOR
Labor Market
Information Services

Gold A. Fongemie
Division Director

Dana A. Evans
Editor

For more information, call
(207) 287-2271
(207) 287-2947

TTY 1-800-794-1110
E-Mail - lmi.me@state.me.us

Visit our Home Page at
<http://janus.state.me.us/labor/lmis/frdef.htm>

LABOR MARKET DIGEST

July Data

September 2000

Nonfarm Wage and Salary Job Gains Continue

Nonfarm wage and salary jobs in Maine increased by 2.9 percent between 1998 and 1999 compared to the national growth rate of 2.3 percent. The annual average rate of growth for Maine ranked seventh among all states and was first among the New England states.

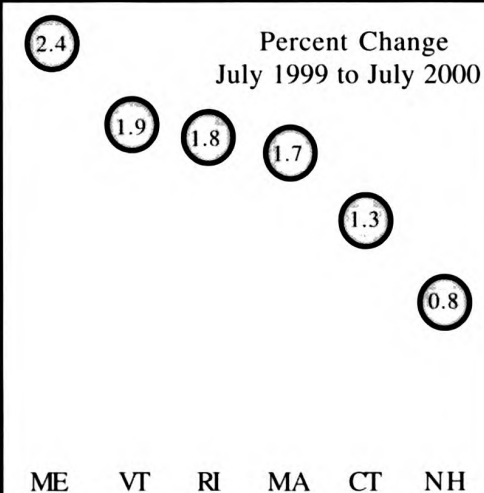
Nonfarm jobs in Maine continued to increase in 2000, with the rate of job growth in Maine exceeding gains in most states and the nation. Between July 1999 and July 2000, seasonally-adjusted nonfarm jobs in Maine grew by 14,000—an increase of 2.4 percent compared to the national growth rate of 2.0 percent. The increase in Maine of 2.4 percent was eleventh among all states and first among the New England states.

The three fastest growing industrial divisions in Maine between July 1999 and July 2000 were construction, services, and transportation, communications, and public utilities. There was an increase of 2,000 construction jobs in Maine over the past year. This increase of 7.1 percent compared favorably to 4.2 percent nationally and ranked seventh among all states. Construction job gains were recorded by all types of construction in Maine, with the strongest increase recorded by special trade contractors.

Services industries accounted for a gain of 5,700 jobs, increasing by 3.3 percent in Maine compared to a national growth rate of 3.4 percent. The Maine growth rate of 3.3 percent for services jobs ranked fifteenth among all states. Over the past year social, educational, and health services contributed substantially to services job growth in Maine.

Transportation, communications, and public utilities jobs increased by 3.3 percent in Maine compared to a national growth rate of 2.5 percent. The Maine growth rate ranked ninth among all states. Gains were recorded in local passenger transportation, motor freight transportation, and communications.

Rate of Nonfarm Job Growth in Maine Leads New England States



Job Change in Maine, July 1999 to July 2000

	Number	Percent	Rank of Percent Change Among the States
Total Nonfarm Wage and Salary*	14,000	2.4	11
Construction	2,000	7.1	7
Transportation and Public Utilities	800	3.3	9
Services	5,700	3.3	15
Wholesale and Retail Trade	3,600	2.5	11
Government	2,300	2.4	21
Manufacturing	-100	-0.1	28
Finance, Insurance, and Real Estate	-400	-1.3	48

* Seasonally adjusted

Civilian Labor Force, Employed, and Unemployed by Labor Market Area, Not Seasonally Adjusted

AREA	CIVILIAN LABOR FORCE ¹			EMPLOYED ²			UNEMPLOYED ³			UNEMPLOYMENT RATE ⁴		
	July 00	June 00	July 99	July 00	June 00	July 99	July 00	June 00	July 99	July 00	June 00	July 99
LABOR MARKET AREAS												
Augusta	48,030	48,040	46,970	46,480	46,170	45,280	1,560	1,870	1,690	3.2%	3.9%	3.6%
Bangor MSA	53,300	53,700	51,000	52,200	52,500	49,900	1,100	1,200	1,100	2.0	2.3	2.1
Bath-Brunswick	36,430	36,470	36,110	35,710	35,500	35,260	720	970	850	2.0	2.7	2.3
Belfast	17,690	17,780	17,170	17,250	17,190	16,670	440	590	500	2.5	3.3	2.9
Biddeford	47,900	45,870	43,090	47,260	45,030	42,390	640	840	690	1.3	1.8	1.6
Boothbay Harbor	11,340	10,580	10,960	11,220	10,400	10,840	130	180	120	1.1	1.7	1.1
Bucksport	5,320	5,320	5,120	5,120	5,120	4,910	200	200	210	3.7	3.8	4.1
Calais	5,430	5,520	5,240	4,910	4,930	4,810	510	590	430	9.5	10.7	8.2
Dexter-Pittsfield	11,640	12,690	11,450	10,980	11,890	10,600	660	800	850	5.7	6.3	7.4
Dover-Foxcroft	7,130	7,590	7,150	6,740	7,190	6,730	390	400	420	5.4	5.2	5.9
Ellsworth-Bar Harbor	24,620	23,260	23,820	24,020	22,480	23,150	600	780	680	2.4	3.3	2.8
Farmington	17,620	17,950	17,500	16,610	16,660	16,460	1,010	1,290	1,050	5.7	7.2	6.0
Fort Kent	3,840	3,820	3,760	3,680	3,560	3,460	170	270	300	4.3	7.0	8.0
Greenville	1,000	940	940	960	890	880	40	60	50	4.3	5.9	5.7
Houlton	6,370	6,550	6,380	6,170	6,320	6,050	200	230	330	3.1	3.5	5.1
Jonesport-Millbridge	4,270	4,280	4,500	4,070	4,010	4,200	200	270	310	4.7	6.4	6.8
Kittery-York ⁵	21,500	21,250	20,900	21,170	20,940	20,610	340	320	290	1.6	1.5	1.4
Lewiston-Auburn MSA	54,200	55,600	53,300	52,800	53,800	51,500	1,300	1,800	1,800	2.5	3.2	3.3
Lincoln-Howland	6,170	6,480	6,110	5,860	6,050	5,780	310	430	330	5.0	6.7	5.3
Machias-Eastport	6,870	6,990	6,790	6,560	6,630	6,400	310	370	390	4.5	5.3	5.7
Madawaska	4,080	4,140	3,940	3,980	4,020	3,790	100	120	150	2.5	2.9	3.8
Millinocket-East Millinocket	5,330	5,480	5,440	5,050	5,130	5,140	280	350	300	5.2	6.4	5.5
Norway-Paris	12,070	12,170	11,550	11,610	11,570	10,930	460	600	620	3.8	4.9	5.4
Outer Bangor	8,750	9,370	8,070	8,390	8,970	7,660	350	410	400	4.0	4.4	5.0
Patten-Island Falls	1,830	1,830	1,870	1,740	1,720	1,710	90	110	160	4.8	5.9	8.3
Portland MSA	145,900	143,300	140,400	143,800	140,500	137,900	2,100	2,800	2,500	1.4	1.9	1.8
Presque Isle-Caribou	21,580	21,830	21,420	20,920	21,090	20,610	660	740	800	3.0	3.4	3.7
Rockland	24,910	24,800	24,430	24,440	24,250	23,890	470	550	550	1.9	2.2	2.2
Rumford	10,160	10,370	9,880	9,480	9,490	9,200	680	890	690	6.7	8.5	6.9
Sanford	23,340	23,970	22,740	22,570	23,050	21,830	770	920	920	3.3	3.8	4.0
Sebago Lakes Region	13,890	13,410	14,590	13,550	12,950	14,050	330	460	540	2.4	3.4	3.7
Skowhegan	17,430	17,840	17,080	16,560	16,820	16,110	870	1,020	970	5.0	5.7	5.7
Stonington	6,080	5,990	6,070	5,940	5,810	5,930	140	180	140	2.3	3.0	2.3
Van Buren	1,540	1,580	1,560	1,490	1,510	1,490	60	70	80	3.6	4.4	4.9
Waterville	24,140	25,230	23,640	23,250	24,160	22,630	890	1,060	1,010	3.7	4.2	4.3
MAINE	711,600	712,000	690,900	692,600	688,400	668,800	19,100	23,700	22,100	2.7	3.3	3.2
UNITED STATES (000)	142,101	142,132	141,119	136,097	136,192	134,800	6,004	5,940	6,319	4.2	4.2	4.5

¹ Civilian labor force, employed, and unemployed estimates are by place of residence. Current month estimates are preliminary; prior month and year-ago estimates are revised. Items may not add due to rounding. All data exclude members of the Armed Forces. MSA stands for Metropolitan Statistical Area.

² Total employment includes nonfarm wage and salary workers, agricultural workers, unpaid family workers, domestics, the self employed, and workers involved in labor disputes.

³ People are classified as unemployed, regardless of their eligibility for unemployment benefits or public assistance, if they meet all of the following criteria: 1) they were not employed during the survey week; 2) they were available for work at that time; and 3) they made specific efforts to find employment some time during the prior four weeks. Persons laid off from their former jobs and awaiting recall and those expecting to report to a job within 30 days need not be looking for work to be counted as unemployed.

⁴ The unemployment rate is calculated by dividing the total number of unemployed by the total civilian labor force, and is expressed as a percent.

⁵ Kittery-York is the five-town Maine portion of the Portsmouth-Rochester PMSA which includes towns in both Maine and New Hampshire.

Source: Maine Department of Labor, Labor Market Information Services, in cooperation with the U.S. Department of Labor, Bureau of Labor Statistics.

Civilian Labor Force, Employed, and Unemployed by County, Not Seasonally Adjusted¹

AREA	CIVILIAN LABOR FORCE			EMPLOYED			UNEMPLOYED			UNEMPLOYMENT RATE		
	July 00	June 00	July 99	July 00	June 00	July 99	July 00	June 00	July 99	July 00	June 00	July 99
COUNTY												
Androscoggin	60,750	62,260	59,790	59,120	60,110	57,720	1,630	2,150	2,070	2.7%	3.5%	3.5%
Aroostook	38,850	39,410	38,570	37,590	37,850	36,750	1,250	1,560	1,820	3.2	4.0	4.7
Cumberland	153,010	150,430	148,140	150,650	147,320	145,350	2,360	3,110	2,800	1.5	2.1	1.9
Franklin	14,830	15,100	14,750	14,030	14,070	13,890	810	1,030	860	5.4	6.8	5.9
Hancock	32,910	31,540	32,050	32,130	30,580	31,150	780	960	900	2.4	3.1	2.8
Kennebec	61,870	62,680	60,480	59,780	60,180	58,210	2,100	2,500	2,270	3.4	4.0	3.8
Knox	21,750	21,680	21,370	21,370	21,210	20,890	380	470	480	1.8	2.1	2.3
Lincoln	20,450	19,660	19,890	20,090	19,220	19,540	360	440	340	1.7	2.2	1.7
Oxford	26,880	26,980	26,510	25,600	25,340	24,930	1,280	1,640	1,580	4.7	6.1	5.9
Penobscot	80,280	82,260	77,280	77,810	79,340	74,590	2,470	2,920	2,690	3.1	3.6	3.5
Piscataquis	8,240	8,640	8,190	7,810	8,190	7,710	430	460	480	5.3	5.3	5.8
Sagadahoc	17,020	17,050	16,920	16,700	16,600	16,500	320	450	430	1.9	2.7	2.5
Somerset	26,210	27,250	25,690	24,920	25,720	24,210	1,290	1,530	1,480	4.9	5.6	5.8
Waldo	23,360	23,590	22,620	22,720	22,770	21,950	630	830	670	2.7	3.5	3.0
Washington	17,110	17,300	17,040	16,070	16,060	15,920	1,040	1,240	1,120	6.1	7.2	6.6
York	108,140	106,180	101,670	106,180	103,820	99,500	1,960	2,360	2,160	1.8	2.2	2.1
MAINE	711,600	712,000	690,900	692,600	688,400	668,800	19,100	23,700	22,100	2.7	3.3	3.2
UNITED STATES (000)	142,101	142,132	141,119	136,097	136,192	134,800	6,004	5,940	6,319	4.2	4.2	4.5

¹ See page 2 for footnotes 1 through 4 and source.

Area Analyst's Corner

Central Maine

Ken Bridges (207) 624-5199

Pride Manufacturing, the world's largest maker of wooden golf tees, is laying off 30 workers at its Guilford plant. ♦ **Telford Aviation** is closing its Waterville location, affecting 40 workers. Most of these workers will be offered a chance to transfer to either Bangor or Rockland. ♦ The Mid-Coast **blueberry crop** is expected to be near record levels due to ideal growing conditions throughout the season. ♦ **Posies Wholesale**, a Rockport manufacturer of Christening garments, is laying off 20 workers.

Western Maine

Gerard Dennison (207) 753-9045

The July unemployment rate in the Lewiston-Auburn MSA of 2.5 percent was the lowest monthly rate ever recorded for the MSA. ♦ **Maine Shoe** in Lewiston will move its operations to a larger factory and add at least 50 jobs next spring due to increased demand for its shoes. ♦ **Big Lots**, a discount retailer, opened in Auburn with 40 new jobs. ♦ **Wal-Mart** will build a new \$7 million, 107,000 square foot supercenter in Mexico. The new store is scheduled to open in the fall of 2001 and will employ 200.

North/East Maine

Craig Holland (207) 941-3076

McCain Foods plans to construct a \$100 million plant to produce frozen french fries at an undetermined site in central Aroostook County. This facility will create hundreds of construction jobs during the building phase and employ approximately 200 area workers when completed. Construction is expected to begin this fall. This announcement comes on the heels of a recently completed \$80 million expansion of their existing facility in Easton. ♦ **Wal-Mart** has filed plans for the construction of new supercenters in Bangor and Ellsworth and expansion of the present store in Presque Isle. These activities will add over 300 new jobs.

Southern Maine

Merrill Huhtala (207) 822-0216

Standard Insurance Company of Portland, Oregon, plans to open an underwriting operation near the Maine Mall employing about 100. ♦ **Clareon Corporation**, a five-month old internet company in Portland specializing in business-to-business funds transfer, has grown from 9 employees last March to 68 this summer, and may increase to 100 by the end of the year. ♦ The **Thomas and Betts** plant in Sanford, recently purchased by **Tyco Electronics**, will shut down by the end of the year, laying off about 270 workers. ♦ **Valle's Steakhouse** in Portland has closed after 40 years in operation. The restaurant typically employs about 60.

Civilian Labor Force, Employed, and Unemployed in Maine, Seasonally Adjusted (in thousands)

ITEM	2000							1999					
	Jul	Jun	May	Apr	Mar	Feb	Jan	Dec	Nov	Oct	Sep	Aug	Jul
Civilian Labor Force	691.0	697.4	700.4	698.4	696.0	695.3	692.1	686.9	683.7	680.9	678.3	673.6	671.2
Employed	667.2	673.5	675.8	675.3	671.5	671.8	667.8	661.8	658.3	654.5	650.8	645.9	644.3
Unemployed	23.8	23.8	24.7	23.1	24.5	23.6	24.3	25.1	25.5	26.4	27.5	27.7	27.0
Unemployment Rate (%)	3.4	3.4	3.5	3.3	3.5	3.4	3.5	3.7	3.7	3.9	4.1	4.1	4.0

¹ See page 2 for footnotes 1 through 4 and source.

Nonfarm Wage and Salary Employment in Maine, Seasonally Adjusted¹ (in thousands)

INDUSTRY	2000							1999					
	Jul	Jun	May	Apr	Mar	Feb	Jan	Dec	Nov	Oct	Sep	Aug	Jul
Nonfarm Wage and Salary Employment ²	600.1	596.8	600.8	601.3	599.2	597.7	593.1	593.1	591.8	590.2	588.8	586.2	586.1
Construction	30.2	30.4	29.4	31.0	30.7	30.8	29.7	29.4	29.1	28.8	28.6	28.3	28.2
Manufacturing	85.7	85.4	85.6	85.9	86.0	86.4	86.2	86.2	86.2	85.9	86.0	85.8	85.8
Durable Goods	43.8	43.1	43.2	43.4	43.3	43.4	43.3	43.2	43.2	42.9	43.0	42.8	42.7
Nondurable Goods	41.9	42.3	42.4	42.5	42.7	43.0	42.9	43.0	43.0	43.0	43.0	43.0	43.1
Transportation and Public Utilities	24.8	24.3	24.3	24.3	24.0	23.8	23.8	23.9	23.9	24.0	24.0	24.0	24.0
Wholesale Trade	28.4	27.9	28.0	28.1	28.0	28.1	28.1	27.9	27.8	27.6	27.6	27.4	27.3
Retail Trade	121.5	120.5	121.6	122.5	121.8	121.7	120.9	120.9	120.6	119.8	118.9	118.8	118.9
Finance, Insurance, and Real Estate	30.6	30.3	30.6	31.1	31.1	31.1	31.1	31.1	31.2	31.1	31.0	31.0	31.0
Services	180.7	179.7	180.5	180.6	178.6	178.0	176.2	176.9	176.3	176.1	175.6	175.5	175.0
Government	98.1	98.2	100.7	97.7	98.9	97.7	97.0	96.7	96.6	96.8	97.0	95.3	95.8

¹ See footnotes 1 and 2 on page 6. ² Mining employment is not suitable for seasonal adjustment because it has very little seasonal and irregular movement. Thus, the not-seasonally-adjusted series is used as a component of the seasonally adjusted total nonfarm wage and salary employment estimate. Source: See page 2.

July Unemployment Rate Unchanged at 3.4 Percent

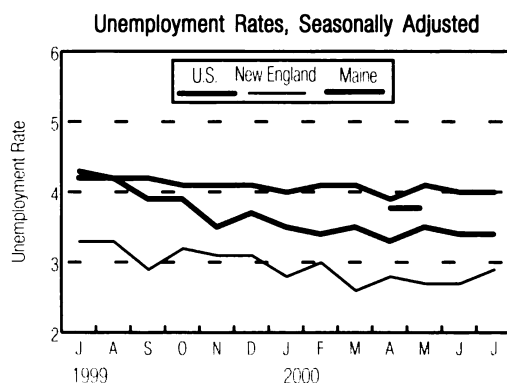
State Labor Commissioner Valerie Landry announced that the seasonally-adjusted unemployment rate for Maine was 3.4 percent in July, unchanged from June.

The seasonally-adjusted unemployment rate for Maine declined over the past year, from 4.0 percent in July 1999 to the current rate of 3.4 percent. The number unemployed dropped by 3,200 to 23,800.

Between July 1999 and July 2000, seasonally-adjusted nonfarm wage and salary jobs increased by 14,000 to 600,100. Contributing to the over-the-year increase in nonfarm wage and salary jobs were gains in services, retail trade, government, construction, and wholesale trade.

Other New England states reporting seasonally-adjusted unemployment rates for July include New Hampshire, 3.1 percent, and Vermont, 2.7 percent. The adjusted national rate was 4.0 percent in July, unchanged from June, and down from 4.3 percent in July 1999.

The not-seasonally-adjusted unemployment rate for July was 2.7 percent, down from 3.3 percent in June and 3.2 percent in July 1999. The unadjusted national rate was 4.2 percent in July, unchanged from June, and down from 4.5 percent in July 1999. Not-seasonally-



adjusted July unemployment rates for Maine counties ranged from 1.5 percent in Cumberland County to 6.1 percent in Washington County.

Not-seasonally-adjusted nonfarm wage and salary jobs fell by 6,600 between June and July as a result of seasonal reductions of nonprofessional workers in local schools and normal temporary plant shutdowns in several manufacturing industries. Partially offsetting these losses were seasonal gains by lodging services and eating and drinking places.

Between July 1999 and July 2000, not-seasonally-adjusted nonfarm wage and salary jobs increased by

Selected Regular Unemployment Compensation Program Indicators

Key Data	July 2000	June 2000	July 1999
Average Duration	14.3	14.3	13.2
Average Weekly Benefit Amount*	\$194.59	\$198.35	\$186.27
Exhaustees	651	537	839

* For totally unemployed claimants, excluding dependency allowances.

Weekly Initial Claims

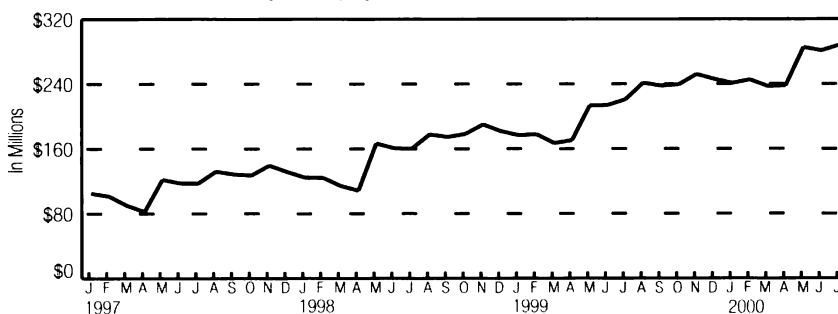
Week	8/12	8/5	7/29	7/22	7/15	7/8	7/1
2000	1,065	1,151	1,014	1,054	1,159	831	1,113
Week	8/14	8/7	7/31	7/24	7/17	7/10	7/3
1999	944	868	1,143	1,230	1,006	1,201	1,088

Continued Claims Less Partial*

July 2000	June 2000	July 1999
4,349	4,506	4,653

* For the week including the 12th of the month.

Monthly Unemployment Insurance Trust Fund Balance

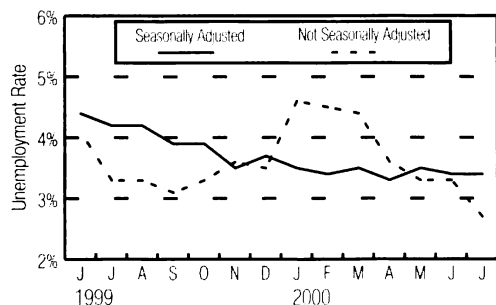


14,200. Services rose by 5,500, mainly in social services, educational services, health services, and other services. Retail trade rose by 3,500, largely in food stores, general merchandise stores, and other retail stores. Construction increased by 2,300, primarily in special trade contractors. Government rose by 2,200, with gains in federal, state, and local government jobs.

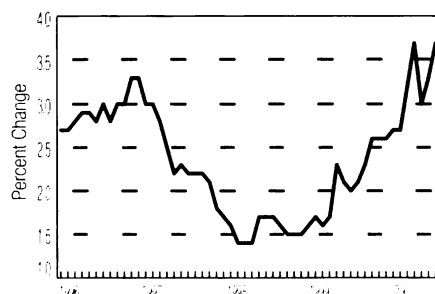
U.S. Consumer Price Index for all urban consumers (CPI-U)

Item	July 00	June 00	July 99	Dec 99
(1982=1984 = 100) All Items	172.6	172.3	166.7	168.3
Percent Change from Prior Month	+0.2%			
Percent Change from 12 Months Ago	+3.5%			
Percent change from Last December	+2.6%			

Unemployment Rates for Maine



Over-the-Year Change in CPI-U



Nonfarm Wage and Salary Employment, Not Seasonally Adjusted

(in thousands)

INDUSTRY	MAINE			PORTLAND MSA			LEWISTON-AUBURN MSA		
	July 00	June 00	July 99	July 00	June 00	July 99	July 00	June 00	July 99
Nonfarm Wage and Salary Employment¹	606.9	613.5	592.7	155.2	154.3	149.8	44.3	46.0	43.5
Goods Producing	117.4	119.1	115.9	23.8	23.7	22.0	9.4	9.9	9.6
Mining	0.1	0.1	0.1	*	*	*	*	*	*
Construction	33.1	32.5	30.8	8.1	7.9	7.3	1.8	1.9	1.8
Building Construction	7.6	7.4	7.2	1.7	1.6	1.4	*	*	*
Heavy Construction	5.7	5.5	5.4	*	*	*	*	*	*
Special Trade Contractors	19.8	19.6	18.2	5.8	5.8	5.3	*	*	*
Manufacturing	84.2	86.5	85.0	15.7	15.8	14.7	7.6	8.0	7.8
Durable Goods	42.9	43.2	42.4	8.2	8.2	7.4	2.3	2.4	2.3
Lumber and Wood Products	10.8	10.7	10.3	*	*	*	*	*	*
Primary and Fabricated Metals	3.7	3.8	3.7	*	*	*	*	*	*
Industrial Machinery and Equipment	4.6	4.7	4.5	1.6	1.6	1.6	*	*	*
Electronic and Other Electrical Equipment	7.8	7.8	6.8	2.9	2.9	2.8	*	*	*
Transportation Equipment	10.9	11.0	11.7	*	*	*	*	*	*
Other Durable Goods	5.1	5.2	5.4	3.7	3.7	3.0	*	*	*
Nondurable Goods	41.3	43.3	42.6	7.5	7.6	7.3	5.3	5.6	5.5
Food and Kindred Products	6.5	6.4	6.3	2.4	2.4	2.2	*	*	*
Textile Mill Products	2.8	3.3	3.3	*	*	*	*	*	*
Apparel and Other Textile Products	1.9	2.6	2.3	*	*	*	*	*	*
Paper and Allied Products	13.4	13.5	14.0	*	*	*	*	*	*
Printing and Publishing	6.3	6.3	6.0	1.6	1.6	1.6	*	*	*
Rubber and Misc. Plastic Products	2.9	3.0	2.9	*	*	*	*	*	*
Leather and Leather Products	5.2	5.9	5.6	0.8	0.8	0.8	0.6	0.8	0.8
Other Nondurable Goods	2.3	2.3	2.2	2.7	2.8	2.7	4.7	4.8	4.7
Service Producing	489.5	494.4	476.8	131.4	130.6	127.8	34.9	36.1	33.9
Transportation and Public Utilities	25.1	24.7	24.4	7.7	7.5	6.9	2.0	2.2	1.9
Wholesale Trade	28.9	28.6	27.8	9.6	9.6	9.2	2.5	2.6	2.5
Retail Trade	130.0	126.8	126.5	34.0	32.6	33.2	8.5	8.5	8.6
General Merchandise Stores	12.6	12.6	11.8	*	*	*	*	*	*
Food Stores	24.6	24.5	23.6	*	*	*	*	*	*
Automotive Sales and Services	14.2	14.2	13.8	*	*	*	*	*	*
Eating and Drinking Places	42.0	40.0	42.0	10.6	9.8	9.7	*	*	*
Other Retail Trade	36.6	35.5	35.3	*	*	*	*	*	*
Finance, Insurance, and Real Estate	31.1	31.1	31.4	13.6	13.6	13.9	2.6	2.5	2.4
Banking	9.6	9.6	9.3	*	*	*	*	*	*
Insurance Carriers, Brokers and Agents	12.2	12.2	13.1	*	*	*	*	*	*
Other Finance, Insurance, and Real Estate	9.3	9.3	9.0	*	*	*	*	*	*
Services	188.6	184.1	183.1	48.6	47.9	47.6	15.1	14.9	14.6
Hotels and Other Lodging Places	16.4	13.5	16.0	*	*	*	*	*	*
Business Services	24.3	24.5	23.8	*	*	*	*	*	*
Health Services	57.6	57.5	56.8	*	*	*	*	*	*
Educational Services	15.4	15.1	14.4	*	*	*	*	*	*
Social Services	24.7	24.8	22.8	*	*	*	*	*	*
Other Services	50.2	48.7	49.3	*	*	*	*	*	*
Government	85.8	99.1	83.6	17.9	19.4	17.0	4.2	5.4	3.9
Federal	14.2	14.4	13.5	2.8	2.8	2.4	0.4	0.4	0.3
State	24.8	24.4	23.9	4.5	4.4	4.1	0.7	0.7	0.6
Local ²	46.8	60.3	46.2	10.6	12.2	10.5	3.1	4.3	3.0

¹ Nonfarm wage and salary employment estimates include all full- and part-time wage and salary workers who worked during or received pay for the pay period which includes the 12th of the month. Domestic workers in private households, proprietors, the self-employed, and unpaid family workers are excluded. Estimates measure the number of jobs by industry. Current month's estimates are preliminary; prior month and year-ago estimates are revised. These estimates are benchmarked to March 1998. As a measure of reliability, the March 1998 benchmark revision for total nonfarm wage and salary employment was .07 percent higher than the original sample-based estimate.

² Regular teachers are included in summer months whether or not specifically paid in those months.

* Where an employment estimate is not entered, either the data is not available in sufficient detail for publication or is nondisclosable by law.

Source: See page 2.

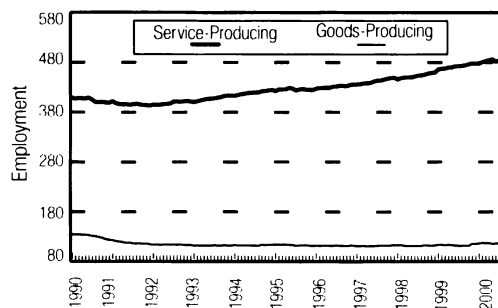
Earnings and Hours of Production Workers in Manufacturing Industries¹ Not Seasonally Adjusted

AREA AND INDUSTRY	AVERAGE WEEKLY EARNINGS			AVERAGE WEEKLY HOURS			AVERAGE HOURLY EARNINGS			ANNUAL AVERAGE HOURLY EARNINGS		
	July 00	June 00	July 99	July 00	June 00	July 99	July 00	June 00	July 99	1999	1998	1997
STATEWIDE												
Manufacturing	\$586.80	\$589.54	\$568.83	40.0	41.4	40.2	\$14.67	\$14.24	\$14.15	\$13.97	\$13.49	\$13.12
Durable Goods	554.76	557.19	540.05	40.2	41.8	41.1	13.80	13.33	13.14	13.12	12.99	12.72
Lumber and Wood Products	474.56	473.06	467.19	40.7	42.2	44.2	11.66	11.21	10.57	10.84	10.46	10.32
Primary and Fabricated Metals	449.45	502.35	528.78	36.6	40.8	42.1	12.28	12.31	12.56	12.52	12.33	11.55
Industrial Machinery and Equipment	716.28	682.43	643.36	47.0	44.4	44.4	15.24	15.37	14.49	14.67	14.33	14.66
Electronic and Other Electric Equipment	522.24	551.63	527.03	40.8	46.2	44.4	12.80	11.94	11.87	11.65	11.48	11.13
Transportation Equipment	673.81	667.93	626.50	36.8	37.8	35.0	18.31	17.67	17.90	17.78	17.60	16.77
Other Durable Goods	449.22	435.77	432.33	41.1	40.2	39.7	10.93	10.84	10.89	10.53	10.40	10.27
Nondurable Goods	620.51	621.27	598.58	39.7	40.9	39.2	15.63	15.19	15.27	14.87	14.01	13.50
Food and Kindred Products	453.02	435.18	403.91	41.6	40.9	38.8	10.89	10.64	10.41	10.19	10.03	9.85
Textile Mill Products	488.11	500.72	475.08	41.4	44.0	42.8	11.79	11.38	11.10	10.98	10.50	9.97
Apparel and Other Textile Products	323.88	370.26	352.96	32.5	37.4	36.5	9.95	9.90	9.67	10.02	9.57	9.52
Paper and Allied Products	930.50	959.15	902.48	41.1	42.8	39.6	22.64	22.41	22.79	21.94	20.23	19.44
Leather and Leather Products	360.38	402.90	370.17	37.5	39.5	38.6	9.61	10.20	9.59	9.78	9.31	8.88
Other Nondurable Goods	520.32	502.44	490.61	38.4	39.1	38.6	13.55	12.85	12.71	12.66	12.12	11.65
PORTLAND MSA												
Manufacturing	534.36	518.74	516.65	43.8	42.8	44.5	12.20	12.12	11.61	11.63	11.42	11.28
LEWISTON-AUBURN MSA												
Manufacturing	507.13	524.16	508.34	39.1	41.6	40.7	12.97	12.60	12.49	12.33	11.86	11.13

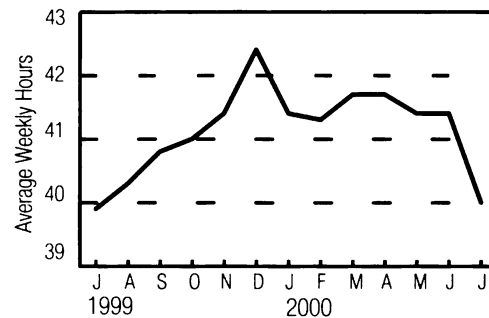
¹ Hours worked and earnings data are computed based on payroll figures for the week including the 12th of the month for manufacturing production workers. Average hourly earnings are calculated on a gross basis, and include such factors as premium pay for overtime and shift differential, as well as changes in basic hourly and incentive rates of pay. Average weekly earnings are the product of weekly hours worked and hourly earnings.

Source: See page 2.

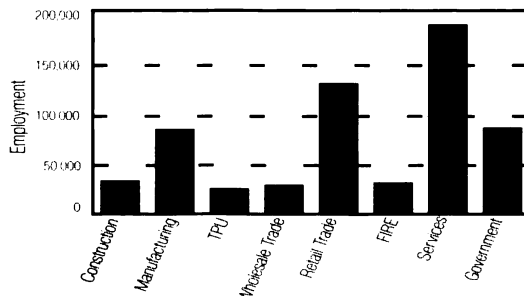
Nonfarm Employment by Sector
January 1990-July 2000, Maine¹



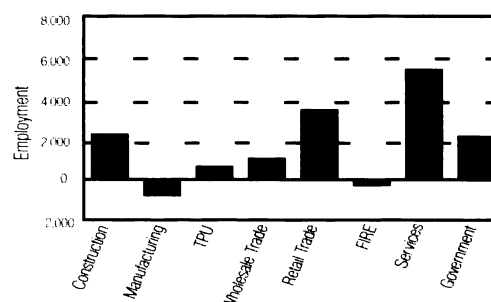
Hours Worked by Manufacturing
Production Workers, Maine²



Nonfarm Employment by Industry Division
Maine, July 2000²



Nonfarm Employment by Industry Division
Maine, Over-the-Year Change, July 2000²



¹ Seasonally Adjusted. ² Not Seasonally Adjusted.

Private Employer Costs Per Hour Worked for Employee Compensation March 2000

	Northeast ¹	South	Midwest	West
Total Compensation	\$22.67	\$17.81	\$19.22	\$20.88
Wages and Salaries	16.37	13.09	13.91	15.45
Total Benefits	6.30	4.72	5.32	5.43
Paid Leave	1.64	1.08	1.19	1.33
Vacation	.81	.54	.59	.64
Holiday	.55	.37	.41	.47
Sick Leave	.20	.13	.12	.17
Other Leave	.07	.05	.06	.05
Supplemental Pay	.71	.53	.64	.54
Premium	.19	.22	.31	.21
Shift Differentials	.05	.04	.07	.04
Nonproduction Bonuses	.46	.27	.27	.29
Insurance	1.40	1.06	1.23	1.14
Life	.05	.04	.05	.04
Health	1.27	.96	1.12	1.05
Sickness and Accident	.05	.03	.04	.02
Long-Term Disability	.03	.03	.02	.03
Retirement and Savings	.67	.51	.61	.61
Defined Benefit	.25	.18	.27	.25
Defined Contribution	.42	.33	.34	.36
Legally Required Benefits	1.85	1.53	1.60	1.79
Social Security	1.32	1.10	1.17	1.28
OASDI	1.05	.89	.94	1.02
Medicare	.27	.22	.23	.25
Federal Unemployment Insurance	.03	.03	.03	.03
State Unemployment Insurance	.16	.06	.09	.12
Worker's Compensation	.34	.33	.31	.37
Other Benefits	.03	.02	.04	.02

¹Northeast: Connecticut, Maine, Massachusetts, New Hampshire, New Jersey, New York, Pennsylvania, Rhode Island, and Vermont.

Source: *Employer Costs for Employee Compensation - March 2000*, U.S. Department of Labor, Bureau of Labor Statistics.

If you do NOT desire to continue receiving this publication, check here ☐ and return this cover to the address below.

If your address has changed, please indicate change and return this cover to the address below.

Maine Department of Labor
Labor Market Information Services
20 Union Street
Augusta, Maine 04330-6826

PRESORTED FIRST CLASS MAIL
POSTAGE PAID
US DEPT. OF LABOR
PERMIT NO. G-12

OFFICIAL BUSINESS
PENALTY FOR PRIVATE USE \$300
RETURN SERVICE REQUESTED