

1-1-2000

Labor Market Digest, January 2000

Maine Department of Labor

Maine Center for Workforce Research and Information

Follow this and additional works at: http://digitalmaine.com/cwri_docs

Recommended Citation

Maine Department of Labor and Maine Center for Workforce Research and Information, "Labor Market Digest, January 2000" (2000). *Center for Workforce Research and Information Documents*. Paper 870.
http://digitalmaine.com/cwri_docs/870

This Text is brought to you for free and open access by the Labor at Maine State Documents. It has been accepted for inclusion in Center for Workforce Research and Information Documents by an authorized administrator of Maine State Documents. For more information, please contact statedocs@maine.gov.

MAINE DEPARTMENT OF LABOR

Labor Market Information

INSIDE . . .

Cumberland County records lowest unemployment rate page 3

Adjusted statewide unemployment rate drops from 3.9 percent in October to 3.5 percent in November .. page 4

Nonfarm employment rises by 13,900 over the year, led by services industries page 6

Maine recorded net immigration between 1998 and 1999 page 8

A publication of the

MAINE DEPARTMENT OF LABOR
Labor Market
Information Services

Arnold A. Fongemie
Division Director

Dana A. Evans
Editor

HD
5725
M2
M2

on-Circ ore information, call

one (207) 287-2271

(207) 287-2947

TTY 1-800-794-1110

E-Mail - lmis@state.me.us

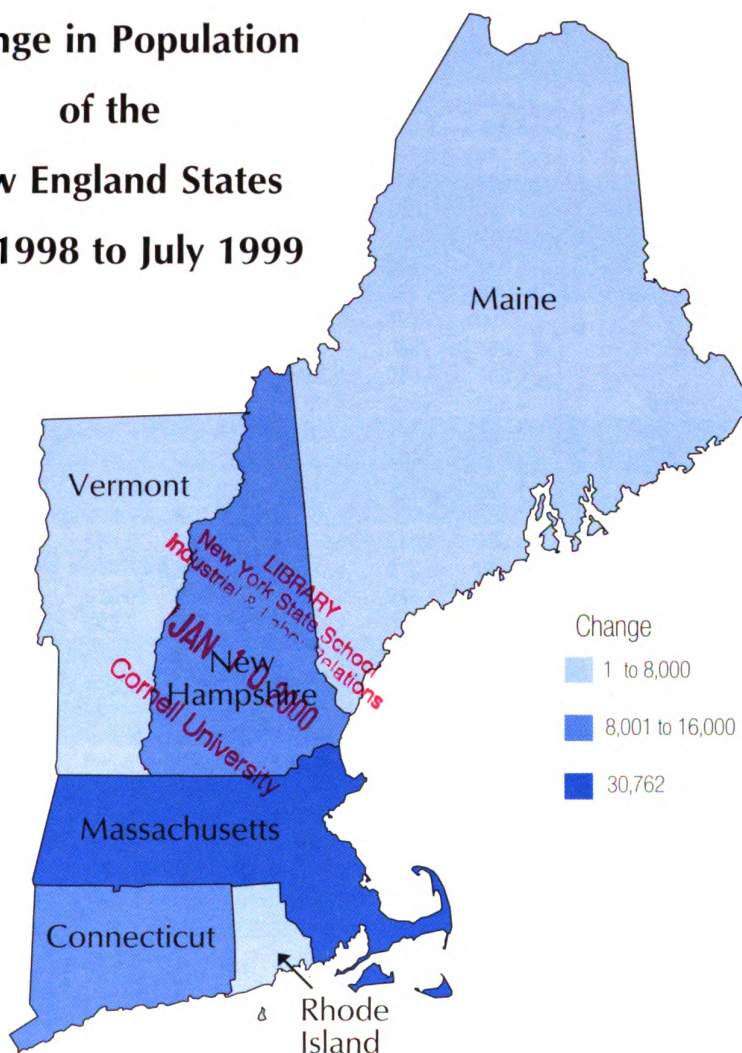
Visit our Home Page at
<http://janus.state.me.us/labor/lmis/frdef.htm>

LABOR MARKET DIGEST

November Data

January 2000

Change in Population of the New England States July 1998 to July 1999



The population increased in all of the New England states between July 1998 and July 1999. Gains ranged from 3,115 in Rhode Island to 30,762 in Massachusetts. Maine's population rose by 5,486.

There were fewer people residing in Connecticut and Rhode Island in 1999 than in 1990. Massachusetts, New Hampshire, Vermont, and Maine recorded gains over the nine-year period of 158,744, 91,822, 30,982, and 25,112, respectively.

See page 8 for population estimates and components of change.

Civilian Labor Force, Employed, and Unemployed by Labor Market Area, Not Seasonally Adjusted

AREA	CIVILIAN LABOR FORCE ¹			EMPLOYED ²			UNEMPLOYED ³			UNEMPLOYMENT RATE ⁴		
	Nov 99	Oct 99	Nov 98	Nov 99	Oct 99	Nov 98	Nov 99	Oct 99	Nov 98	Nov 99	Oct 99	Nov 98
LABOR MARKET AREAS												
Augusta	45,130	45,680	46,130	43,440	43,960	43,760	1,690	1,730	2,370	3.7%	3.8%	5.1%
Bangor MSA	53,400	53,200	50,400	52,200	52,100	49,000	1,300	1,200	1,400	2.4	2.2	2.8
Bath-Brunswick	35,390	34,510	32,720	34,460	33,640	31,860	930	870	870	2.6	2.5	2.6
Belfast	15,280	15,430	14,290	14,680	14,960	13,700	610	470	600	4.0	3.1	4.2
Biddeford	37,540	39,250	35,390	36,600	38,480	34,310	950	760	1,090	2.5	1.9	3.1
Boothbay Harbor	8,380	8,990	8,020	8,140	8,860	7,740	240	120	270	2.8	1.4	3.4
Bucksport	5,160	5,120	5,080	4,920	4,920	4,830	240	200	260	4.7	3.8	5.0
Calais	5,400	5,370	5,090	4,830	4,830	4,590	570	540	500	10.5	10.1	9.8
Dexter-Pittsfield	12,660	12,910	12,620	11,750	12,010	11,520	910	900	1,100	7.2	6.9	8.7
Dover-Foxcroft	7,310	7,370	7,140	6,860	6,880	6,700	450	490	450	6.2	6.7	6.2
Ellsworth-Bar Harbor	20,310	21,880	18,740	19,120	21,250	17,600	1,190	630	1,140	5.9	2.9	6.1
Farmington	17,520	17,070	17,130	16,100	16,020	15,770	1,420	1,050	1,360	8.1	6.2	7.9
Fort Kent	3,750	3,770	3,740	3,560	3,540	3,410	190	230	330	5.1	6.2	8.7
Greenville	950	980	950	870	920	870	80	60	70	8.1	6.0	7.7
Houlton	6,550	6,560	6,360	6,310	6,320	6,030	240	240	330	3.6	3.7	5.1
Jonesport-Milbridge	4,690	4,060	4,450	4,420	3,790	4,160	270	260	290	5.7	6.5	6.6
Kittery-York ⁵	20,220	20,370	19,940	20,020	20,140	19,650	200	230	290	1.0	1.1	1.5
Lewiston-Auburn MSA	55,200	54,400	53,300	53,500	52,700	51,200	1,700	1,700	2,100	3.1	3.2	3.9
Lincoln-Howland	5,860	5,870	5,760	5,530	5,540	5,390	330	330	370	5.6	5.6	6.4
Machias-Eastport	6,870	6,900	7,110	6,500	6,510	6,560	380	390	550	5.5	5.7	7.8
Madawaska	3,930	4,010	3,900	3,780	3,860	3,700	140	150	210	3.6	3.6	5.3
Millinocket-East Millinocket	5,200	5,310	5,190	4,870	4,970	4,820	330	340	370	6.3	6.4	7.1
Norway-Paris	11,560	11,520	11,370	10,940	10,870	10,700	620	650	670	5.4	5.7	5.9
Outer Bangor	8,040	8,070	7,720	7,630	7,690	7,260	410	380	460	5.1	4.7	5.9
Patten-Island Falls	1,990	2,010	1,950	1,830	1,870	1,730	160	140	220	7.8	7.1	11.1
Portland MSA	141,300	140,700	136,200	138,500	137,900	133,600	2,800	2,800	2,600	2.0	2.0	1.9
Presque Isle-Caribou	20,150	20,210	19,790	19,450	19,590	18,550	700	620	1,250	3.5	3.1	6.3
Rockland	23,140	23,570	22,860	22,590	23,100	22,260	550	470	600	2.4	2.0	2.6
Rumford	10,360	9,880	9,970	9,630	9,260	9,230	730	620	730	7.0	6.3	7.4
Sanford	23,430	23,310	23,090	22,440	22,380	21,910	990	930	1,170	4.2	4.0	5.1
Sebago Lakes Region	12,960	13,770	12,970	12,330	13,170	12,330	620	590	640	4.8	4.3	4.9
Skowhegan	17,020	17,000	16,560	15,720	15,870	15,370	1,310	1,130	1,190	7.7	6.7	7.2
Stonington	5,880	5,910	5,660	5,700	5,770	5,500	180	140	150	3.0	2.4	2.7
Van Buren	1,460	1,450	1,440	1,390	1,380	1,340	70	70	100	4.7	4.8	6.9
Waterville	24,970	24,820	24,590	23,880	23,720	23,230	1,080	1,100	1,360	4.3	4.4	5.5
MAINE	679,000	681,200	657,700	654,400	658,700	630,200	24,500	22,500	27,400	3.6	3.3	4.2
UNITED STATES (000)	139,895	139,761	138,288	134,515	134,390	132,577	5,380	5,372	5,711	3.8	3.8	4.1

¹ Civilian labor force, employed, and unemployed estimates are by place of residence. Current month estimates are preliminary; prior month and year-ago estimates are revised. Items may not add due to rounding. All data exclude members of the Armed Forces. MSA stands for Metropolitan Statistical Area.

² Total employment includes nonfarm wage and salary workers, agricultural workers, unpaid family workers, domestics, the self employed, and workers involved in labor disputes.

³ People are classified as unemployed, regardless of their eligibility for unemployment benefits or public assistance, if they meet all of the following criteria: 1) they were not employed during the survey week; 2) they were available for work at that time; and 3) they made specific efforts to find employment some time during the prior four weeks. Persons laid off from their former jobs and awaiting recall and those expecting to report to a job within 30 days need not be looking for work to be counted as unemployed.

⁴ The unemployment rate is calculated by dividing the total number of unemployed by the total civilian labor force, and is expressed as a percent.

⁵ Kittery-York is the five-town Maine portion of the Portsmouth-Rochester PMSA which includes towns in both Maine and New Hampshire.

Source: Maine Department of Labor, Labor Market Information Services, in cooperation with the U.S. Department of Labor, Bureau of Labor Statistics.

Civilian Labor Force, Employed, and Unemployed by County, Not Seasonally Adjusted¹

AREA	CIVILIAN LABOR FORCE			EMPLOYED			UNEMPLOYED			UNEMPLOYMENT RATE		
	Nov 99	Oct 99	Nov 98	Nov 99	Oct 99	Nov 98	Nov 99	Oct 99	Nov 98	Nov 99	Oct 99	Nov 98
COUNTY												
Androscoggin	61,500	60,460	59,320	59,310	58,480	56,880	2,190	1,980	2,450	3.6%	3.3%	4.1%
Aroostook	37,350	37,560	36,760	35,890	36,090	34,360	1,460	1,470	2,400	3.9	3.9	6.5
Cumberland	148,140	147,670	142,500	145,040	144,530	139,540	3,100	3,130	2,960	2.1	2.1	2.1
Franklin	14,680	14,390	14,360	13,600	13,530	13,310	1,080	870	1,050	7.4	6.0	7.3
Hancock	28,680	30,080	26,950	27,200	29,230	25,540	1,480	850	1,410	5.2	2.8	5.2
Kennebec	59,870	60,240	60,410	57,560	57,910	57,370	2,300	2,330	3,050	3.8	3.9	5.0
Knox	20,340	20,690	20,070	19,830	20,280	19,540	510	410	530	2.5	2.0	2.6
Lincoln	16,790	17,430	16,240	16,320	17,060	15,670	460	370	570	2.8	2.1	3.5
Oxford	26,390	26,230	25,880	24,800	24,710	24,190	1,590	1,520	1,690	6.0	5.8	6.5
Penobscot	79,590	79,840	76,090	76,670	77,060	72,840	2,920	2,770	3,250	3.7	3.5	4.3
Piscataquis	8,390	8,480	8,210	7,850	7,920	7,680	540	560	520	6.5	6.6	6.4
Sagadahoc	16,570	16,140	15,290	16,130	15,750	14,910	440	390	380	2.6	2.4	2.5
Somerset	26,500	26,610	26,040	24,640	24,880	24,090	1,860	1,730	1,950	7.0	6.5	7.5
Waldo	20,870	20,930	19,810	20,010	20,280	18,870	850	660	940	4.1	3.1	4.8
Washington	17,410	16,800	17,020	16,160	15,590	15,680	1,240	1,210	1,340	7.1	7.2	7.9
York	95,910	97,660	92,710	93,420	95,410	89,780	2,490	2,250	2,940	2.6	2.3	3.2
MAINE	679,000	681,200	657,700	654,400	658,700	630,200	24,500	22,500	27,400	3.6	3.3	4.2
UNITED STATES (000)	139,895	139,761	138,288	134,515	134,390	132,577	5,380	5,372	5,711	3.8	3.8	4.1

¹ See page 2 for footnotes 1 through 4 and source.

Area Analyst's Corner

Central Area

Ken Bridges (207) 624-5199

MBNA plans to expand in Rockland, adding up to 800 new jobs within three years to the current workforce of about 200. Statewide, MBNA expects to employ 5,000 by 2001.

◆**EnvisioNet** expects to start operations in Augusta next month bringing hundreds of jobs to the area. This expansion will complement four other facilities in Maine operated by EnvisioNet, including offices in Brunswick and Winthrop.

North/East Area

Craig Holland (207) 941-3076

An announced \$50 million expansion by **Telford Aviation** at their Bangor International Airport site is expected to create 35 new jobs. The company, which modifies aircraft including installing extra fuel tanks for transatlantic flights, has an agreement with Volvo Aero to distribute aviation parts nationally. ◆A newly formed company, **Maine Composite Technologies**, has exclusive rights to University of Maine patents for wood composites technology, and will build wood I-joists for support structures in place of concrete and steel beams. They are considering building a facility in Millinocket.

Western Area

Gerard Dennison (207) 783-5314

As part of the current multi-year contract with the Navy to build six ships, **Bath Iron Works** received \$324 million to build an Aegis Destroyer. ◆The unemployment rate in the **Lewiston-Auburn Metropolitan Statistical Area (MSA)** was 3.1 percent in November, the lowest November rate since 1967. Nonfarm employment in the MSA reached an all-time high of 45,800 jobs. ◆The unemployment rate in the **Farmington LMA** jumped from 6.2 percent in October to 8.1 percent in November due to the **Cole-Haan Shoe** plant closing in Livermore Falls.

Southern Area

Eva Smith (207) 775-5891

Fairchild Semiconductor will be moving its corporate headquarters into the 120,000 square-foot building office space in South Portland recently vacated by UnumProvident. The quick absorption of the commercial space made available by the UnumProvident consolidation was due to the strength of Greater Portland's economy. ◆The **Portland Public Market**, which opened 15 months ago in Portland to provide a venue for Maine products, is struggling to build the core of frequent shoppers it needs. Despite considerable turnover, there are more vendors now than when the market opened. ◆**B2B Explorer**, a new business-to-business Internet company located in Westbrook, expects to have 24 to 27 employees within a year.

Civilian Labor Force, Employed, and Unemployed in Maine, Seasonally Adjusted (in thousands)

ITEM	1999												1998	
	Nov	Oct	Sep	Aug	Jul	Jun	May	Apr	Mar	Feb	Jan		Dec	Nov
Civilian Labor Force	682.6	679.8	676.3	669.5	670.0	668.5	668.1	663.0	662.8	663.8	660.5		664.7	662.2
Employed	659.0	653.5	650.1	641.5	642.2	639.1	639.4	639.4	640.2	641.8	637.7		639.5	635.5
Unemployed	23.6	26.3	26.2	28.0	27.8	29.4	28.7	23.6	22.6	22.0	22.8		25.2	26.7
Unemployment Rate (%)	3.5	3.9	3.9	4.2	4.2	4.4	4.3	3.6	3.4	3.3	3.5		3.8	4.0

¹ See page 2 for footnotes 1 through 4 and source.

Nonfarm Wage and Salary Employment in Maine, Seasonally Adjusted¹ (in thousands)

INDUSTRY	1999												1998	
	Nov	Oct	Sep	Aug	Jul	Jun	May	Apr	Mar	Feb	Jan		Dec	Nov
Nonfarm Wage and Salary Employment ²	589.8	587.9	586.0	584.4	583.5	583.8	581.6	581.4	580.8	579.9	578.6		577.1	576.1
Construction	26.8	26.4	26.6	26.8	26.9	26.9	27.3	27.4	26.7	26.6	26.2		25.1	25.0
Manufacturing	85.7	85.1	85.3	84.7	84.7	84.9	84.7	84.6	85.7	86.4	86.6		85.4	85.9
Durable Goods	42.9	42.5	42.7	42.2	42.3	42.0	42.2	42.2	42.7	42.9	43.0		42.5	42.6
Nondurable Goods	42.8	42.6	42.6	42.5	42.4	42.9	42.5	42.4	43.0	43.5	43.6		42.9	43.3
Transportation and Public Utilities	24.4	24.4	24.4	24.4	24.3	24.3	24.4	24.1	24.2	24.2	24.2		24.0	23.9
Wholesale Trade	27.3	27.2	27.2	27.1	26.8	27.1	27.1	27.2	27.1	27.1	27.0		27.0	27.1
Retail Trade	122.5	121.0	118.9	119.0	118.5	119.1	118.8	118.3	118.7	117.8	118.2		119.1	119.1
Finance, Insurance, and Real Estate	30.8	31.0	30.7	30.6	30.9	31.1	31.1	31.0	30.7	30.8	30.7		30.3	30.2
Services	178.8	178.7	177.5	177.0	176.5	176.1	174.5	174.5	173.2	172.7	172.1		172.5	171.9
Government	93.4	94.0	95.3	94.7	94.8	94.2	93.6	94.2	94.4	94.2	93.5		93.6	92.9

¹ See footnotes 1 and 2 on page 6. ² Mining employment is not suitable for seasonal adjustment because it has very little seasonal and irregular movement. Thus, the not-seasonally-adjusted series is used as a component of the seasonally adjusted total nonfarm wage and salary employment estimate. Source: See page 2.

November Unemployment Rate Fell to 3.5 Percent

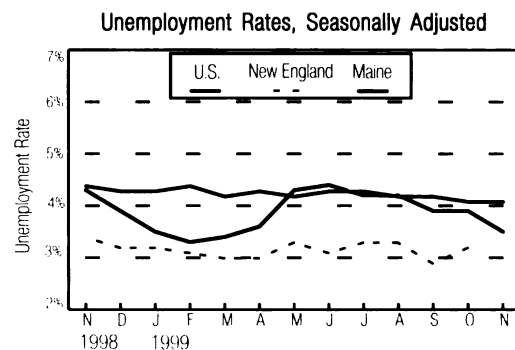
State Labor Commissioner Valerie Landry announced that the seasonally-adjusted November unemployment rate for Maine was 3.5 percent, down from 3.9 percent in October.

"Seasonally-adjusted unemployment fell between October and November as the number of jobs in Maine continued to increase," said Commissioner Landry. "Unemployment also declined from November 1998, with a drop in unemployment of 3,100 and a decline in the unemployment rate from 4.0 percent to 3.5 percent."

Between October and November, seasonally-adjusted nonfarm wage and salary jobs rose by 1,900 to 589,800. Over the past year, nonfarm jobs rose by 13,700, with about half of the job growth in services industries. Additional job gains were reported in retail trade; construction; finance, insurance, and real estate; transportation and public utilities; government; and wholesale trade.

Other New England states reporting their seasonally-adjusted November unemployment rates include Vermont and New Hampshire, both at 2.6 percent. The adjusted national rate for November was 4.1 percent.

The not-seasonally-adjusted November unemployment rate for Maine was 3.6 percent, up from 3.3 percent in



October and down from 4.2 percent in November 1998. The unadjusted national rate was 3.8 percent in November, unchanged from October and down from 4.1 percent in November 1998. Not-seasonally-adjusted unemployment rates for Maine counties ranged from 2.1 percent in Cumberland County to 7.4 percent in Franklin County.

Not-seasonally-adjusted nonfarm wage and salary employment was unchanged between October and November at 598,700. Miscellaneous retail trade establishments and general merchandise stores geared up for the holidays and there was an increase in local government due to temporary hiring for elections. These gains were offset by normal seasonal losses in

Selected Regular Unemployment Compensation Program Indicators

Key Data	Nov 1999	Oct 1999	Nov 1998
Average Duration	12.5	12.6	16.2
Average Weekly Benefit Amount*	\$190.81	\$190.96	\$184.65
Exhaustees	732	510	1,751

* For totally unemployed claimants, excluding dependency allowances.

Weekly Initial Claims

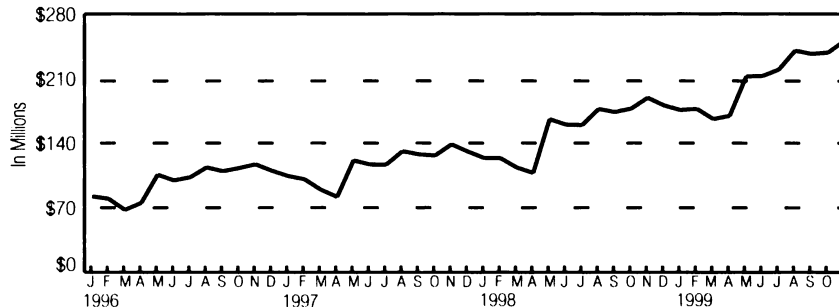
Week	12/4	11/27	11/20	11/13	11/6	10/30	10/23
1999	1,764	1,208	1,742	1,348	1,433	1,339	1,181
Week	12/5	11/28	11/21	11/14	11/7	10/31	10/24
1998	2,992	1,617	1,645	1,305	1,485	1,752	1,346

Continued Claims Less Partial*

Nov 1999	Oct 1999	Nov 1998
4,668	3,293	7,001

* For the week including the 12th of the month.

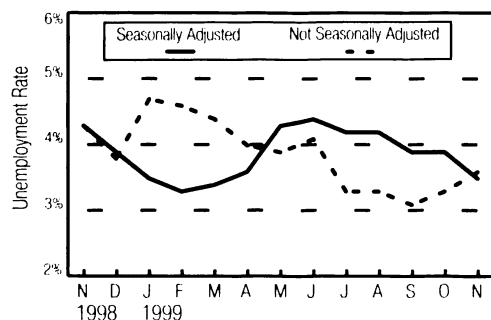
Monthly Unemployment Insurance Trust Fund Balance



restaurants and lodging services.

Between November 1998 and November 1999, not-seasonally-adjusted nonfarm wage and salary jobs rose by 13,900. Services increased by 6,900, largely in social, business, health, and other services. Retail trade rose by 3,600, with the largest increases in general merchandise stores, food stores, and auto sales and service stores. Construction; finance, insurance, and real estate; and transportation and public utilities also added jobs.

Unemployment Rates for Maine

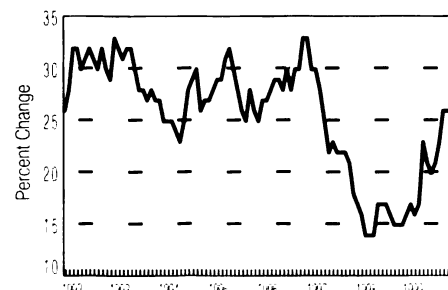


U.S. Consumer Price Index for all urban consumers (CPI-U)

Item	Nov 99	Oct 99	Nov 98	Dec 98
(1982-1984 = 100) All Items	168.3	168.2	164.0	163.9

Percent Change from Prior Month	+0.1%
Percent Change from 12 Months Ago	+2.6%
Percent change from Last December	+2.7%

Over-the-Year Change in CPI-U



Nonfarm Wage and Salary Employment, Not Seasonally Adjusted (In thousands)

INDUSTRY	MAINE			PORTLAND MSA			LEWISTON-AUBURN MSA		
	Nov 99	Oct 99	Nov 98	Nov 99	Oct 99	Nov 98	Nov 99	Oct 99	Nov 98
Nonfarm Wage and Salary Employment¹	598.7	598.7	584.8	152.8	152.2	149.6	45.8	45.2	44.8
Goods Producing	115.3	114.6	113.6	22.7	23.1	22.3	9.6	9.7	9.7
Mining	0.1	0.1	0.1	*	*	*	*	*	*
Construction	28.1	28.8	26.3	7.8	8.1	7.3	1.7	1.7	1.7
Building Construction	6.2	6.2	5.7	1.4	1.4	1.3	.	.	.
Heavy Construction	5.2	5.6	4.6
Special Trade Contractors	16.7	17.0	16.0	5.9	6.2	5.6	.	.	.
Manufacturing	87.1	85.7	87.2	14.9	15.0	15.0	7.9	8.0	8.0
Durable Goods	44.1	43.1	43.7	7.2	7.2	7.1	2.2	2.3	2.3
Lumber and Wood Products	10.8	10.8	10.8
Primary and Fabricated Metals	3.8	3.8	3.7
Industrial Machinery and Equipment	4.7	4.7	4.7	1.7	1.7	1.6	.	.	.
Electronic and Other Electrical Equipment	7.4	7.2	7.1	2.8	2.8	2.4	.	.	.
Transportation Equipment	11.4	11.4	11.6
Other Durable Goods	6.0	5.2	5.8	2.7	2.7	3.1	.	.	.
Nondurable Goods	43.0	42.6	43.5	7.7	7.8	7.9	5.7	5.7	5.7
Food and Kindred Products	6.1	6.0	6.1	2.5	2.5	2.5	.	.	.
Textile Mill Products	3.2	3.1	3.4
Apparel and Other Textile Products	2.5	2.5	2.3
Paper and Allied Products	13.5	13.4	14.0
Printing and Publishing	6.2	6.1	5.9	1.8	1.8	1.8	.	.	.
Rubber and Misc. Plastic Products	2.8	2.8	2.9
Leather and Leather Products	6.6	6.5	6.7	0.9	1.0	0.9	0.9	0.9	1.0
Other Nondurable Goods	2.1	2.2	2.2	2.5	2.5	2.7	4.8	4.8	4.7
Service Producing	483.4	484.1	471.2	130.1	129.1	127.3	36.2	35.5	35.1
Transportation and Public Utilities	24.5	24.8	24.0	6.9	7.1	6.6	1.9	1.9	1.8
Wholesale Trade	27.3	27.3	27.1	9.1	9.1	9.1	2.4	2.3	2.3
Retail Trade	125.6	124.3	122.0	36.5	35.4	34.3	9.6	9.0	9.3
General Merchandise Stores	13.9	13.3	12.8
Food Stores	24.2	23.9	22.6
Automotive Sales and Services	14.1	14.0	13.5
Eating and Drinking Places	34.5	36.7	34.0	8.5	8.6	8.0	.	.	.
Other Retail Trade	38.9	36.4	39.1
Finance, Insurance, and Real Estate	30.6	30.7	30.0	13.0	13.0	13.0	2.4	2.4	2.3
Banking	9.3	9.3	8.8
Insurance Carriers, Brokers and Agents	12.6	12.7	12.6
Other Finance, Insurance, and Real Estate	8.7	8.7	8.6
Services	177.4	180.6	170.5	45.1	45.3	44.9	14.8	14.8	14.3
Hotels and Other Lodging Places	8.3	10.5	8.3
Business Services	26.1	25.9	24.9
Health Services	56.9	56.8	56.1
Educational Services	15.0	15.0	14.7
Social Services	25.1	24.8	22.7
Other Services	46.0	47.6	43.8
Government	98.0	96.4	97.6	18.7	17.7	19.4	5.1	5.1	5.1
Federal	13.4	13.3	13.4	2.5	2.4	2.5	0.3	0.3	0.3
State	26.8	26.9	26.6	5.3	5.2	5.2	0.7	0.7	0.7
Local ²	57.8	56.2	57.6	11.7	11.6	11.7	4.1	4.1	4.1

¹ Nonfarm wage and salary employment estimates include all full- and part-time wage and salary workers who worked during or received pay for the pay period which includes the 12th of the month. Domestic workers in private households, proprietors, the self-employed, and unpaid family workers are excluded. Estimates measure the number of jobs by industry. Current month's estimates are preliminary; prior month and year-ago estimates are revised. These estimates are benchmarked to March 1998. As a measure of reliability, the March 1998 benchmark revision for total nonfarm wage and salary employment was .07 percent higher than the original sample-based estimate.

² Regular teachers are included in summer months whether or not specifically paid in those months.

* Where an employment estimate is not entered, either the data is not available in sufficient detail for publication or is nondisclosable by law.

Source: See page 2.

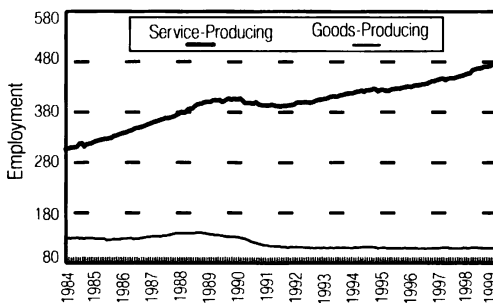
Earnings and Hours of Production Workers in Manufacturing Industries¹ Not Seasonally Adjusted

AREA AND INDUSTRY	AVERAGE WEEKLY EARNINGS			AVERAGE WEEKLY HOURS			AVERAGE HOURLY EARNINGS			ANNUAL AVERAGE HOURLY EARNINGS		
	Nov 99	Oct 99	Nov 98	Nov 99	Oct 99	Nov 98	Nov 99	Oct 99	Nov 98	1998	1997	1996
STATEWIDE												
Manufacturing	\$577.41	\$576.87	\$546.12	41.6	41.0	41.0	\$13.88	\$14.07	\$13.32	\$13.50	\$13.12	\$12.71
Durable Goods	546.88	547.23	537.97	42.1	41.3	41.8	12.99	13.25	12.87	12.99	12.72	12.23
Lumber and Wood Products	464.20	480.78	443.52	42.2	42.1	42.2	11.00	11.42	10.51	10.45	10.32	10.10
Primary and Fabricated Metals	541.73	551.69	492.07	43.2	43.0	40.4	12.54	12.83	12.18	12.33	11.55	11.31
Industrial Machinery and Equipment	699.13	677.25	638.82	46.3	45.0	45.5	15.10	15.05	14.04	14.33	14.66	14.17
Electronic and Other Electric Equipment	543.51	496.69	534.25	49.5	43.8	46.7	10.98	11.34	11.44	11.48	11.13	10.94
Transportation Equipment	641.17	646.76	657.93	35.9	37.0	36.9	17.86	17.48	17.83	17.60	16.77	15.49
Other Durable Goods	406.30	424.20	423.67	39.6	40.4	41.7	10.26	10.50	10.16	10.40	10.27	10.08
Nondurable Goods	608.85	609.55	554.58	41.0	40.8	40.1	14.85	14.94	13.83	14.04	13.50	13.17
Food and Kindred Products	405.66	415.24	420.09	41.1	41.4	41.8	9.87	10.03	10.05	10.00	9.85	10.00
Textile Mill Products	496.35	495.20	438.13	45.0	45.1	41.1	11.03	10.98	10.66	10.49	9.97	10.27
Apparel and Other Textile Products	463.06	409.45	392.12	42.6	40.3	40.3	10.87	10.16	9.73	9.57	9.52	9.00
Paper and Allied Products	929.34	938.56	803.01	41.6	41.9	40.7	22.34	22.40	19.73	20.23	19.44	18.84
Leather and Leather Products	404.56	382.33	367.26	40.7	37.3	38.7	9.94	10.25	9.49	9.31	8.88	8.71
Other Nondurable Goods	494.21	500.29	469.32	38.4	39.8	38.5	12.87	12.57	12.19	12.12	11.65	11.20
PORTLAND MSA												
Manufacturing	519.50	507.37	496.25	44.1	42.6	43.8	11.78	11.91	11.33	11.86	11.28	11.22
LEWISTON-AUBURN MSA												
Manufacturing	530.44	535.94	522.83	42.3	42.4	42.3	12.54	12.64	12.36	11.40	11.13	11.13

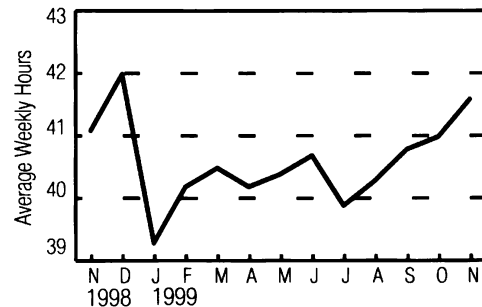
Hours worked and earnings data are computed based on payroll figures for the week including the 12th of the month for manufacturing production workers. Average hourly earnings are calculated on a gross basis, and include such factors as premium pay for overtime and shift differential, as well as changes in basic hourly and incentive rates of pay. Average weekly earnings are the product of weekly hours worked and hourly earnings.

Source: See page 2.

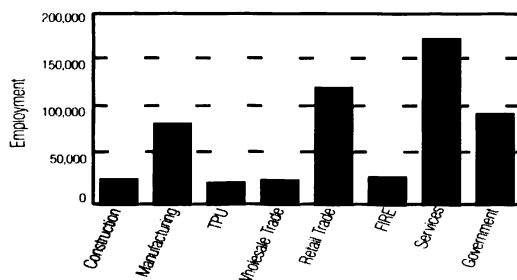
Nonfarm Employment by Sector
January 1984-November 1999, Maine¹



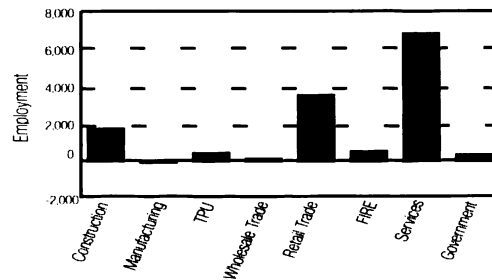
Hours Worked by Manufacturing
Production Workers, Maine²



Nonfarm Employment by Industry Division
Maine, November 1999²



Nonfarm Employment by Industry Division
Maine, Over-the-Year Change, November 1999²



¹ Seasonally Adjusted. ² Not Seasonally Adjusted

Population Change of the New England States

The demographic components of population change consist of natural change and net migration. Natural change is defined as births minus deaths. Net migration is the difference between all forms of migration into and out of an area.

The U.S. Department of Commerce, Bureau of the Census, recently released state population estimates for 1999. In Maine, the 1999 population was 1,253,040, an increase of 5,486 over 1998. Contributing to this increase in population was a natural change of 1,629 and a net immigration of 4,138.

More people moved into Maine than left Maine between 1995 and 1999, which is a reversal of the previous five years. Between 1990 and 1995 more people left Maine than moved into Maine each year. One possible reason for this reversal is an improved economic climate.

Of the six New England states, the 1999 populations of Rhode Island and Connecticut were below the 1990 populations. In both cases, the net outmigration of people outweighed the natural increase. Although Maine and Massachusetts also had a net outmigration of people over this nine-year period, it was more than offset by the natural increase in the population.

Population and Components of Change, July, 1998 to 1999

Area	Year		Change		Components of Change		
	1998	1999	Net	Percent	Births	Deaths	Net Migration ¹
New England	13,428,630	13,495,933	67,303	0.5	172,903	122,292	19,718
Maine	1,247,554	1,253,040	5,486	0.4	13,793	12,164	4,138
New Hampshire	1,185,823	1,201,134	15,311	1.3	14,660	9,564	10,318
Vermont	590,579	593,740	3,161	0.5	6,604	4,910	1,643
Massachusetts	6,144,407	6,175,169	30,762	0.5	81,719	55,894	6,283
Rhode Island	987,704	990,819	3,115	0.3	12,628	9,769	524
Connecticut	3,272,563	3,282,031	9,468	0.3	43,499	29,991	-3,188

Population and Components of Change, April 1990 to July 1999

Area	Year		Change		Components of Change		
	1990	1999	Net	Percent	Births	Deaths	Net Migration ¹
New England	13,206,943	13,495,933	288,990	2.2	1,674,747	1,100,990	-252,828
Maine	1,227,928	1,253,040	25,112	2.0	137,791	107,664	-3,452
New Hampshire	1,109,252	1,201,134	91,882	8.3	142,027	83,680	36,602
Vermont	562,758	593,740	30,982	5.5	67,101	44,797	10,574
Massachusetts	6,016,425	6,175,169	158,744	2.6	778,803	506,880	-96,660
Rhode Island	1,003,464	990,819	-12,645	-1.3	125,103	89,187	-46,911
Connecticut	3,287,116	3,282,031	-5,085	-0.2	423,922	268,782	-152,981

¹Includes net domestic migration and net international migration.

Source: U.S. Department of Commerce, Bureau of the Census. Note: Components of change may not add to change due to statistical residual which is not shown in this table.

If you do **NOT** desire to continue receiving this publication, check here ☐ and return this cover to the address below.

If your address has changed, please indicate change and return this cover to the address below.

Maine Department of Labor
Labor Market Information Services
20 Union Street
Augusta, Maine 04330-6826

PRESORTED FIRST CLASS MAIL
POSTAGE PAID
US DEPT. OF LABOR
PERMIT NO. G-12

OFFICIAL BUSINESS
PENALTY FOR PRIVATE USE \$300
RETURN SERVICE REQUESTED