

1-1-1998

Labor Market Digest, January 1998

Maine Department of Labor

Maine Center for Workforce Research and Information

Follow this and additional works at: http://digitalmaine.com/cwri_docs

Recommended Citation

Maine Department of Labor and Maine Center for Workforce Research and Information, "Labor Market Digest, January 1998" (1998). *Center for Workforce Research and Information Documents*. Paper 846.
http://digitalmaine.com/cwri_docs/846

This Text is brought to you for free and open access by the Labor at Maine State Documents. It has been accepted for inclusion in Center for Workforce Research and Information Documents by an authorized administrator of Maine State Documents. For more information, please contact statedocs@maine.gov.

Maine Department of Labor

LABOR MARKET DIGEST

November Data

January 1998

INSIDE . . .

Cumberland County recorded lowest unemployment rate in the state page 3

Adjusted unemployment declined between October and November page 4

Nonfarm employment fell slightly over the month page 6

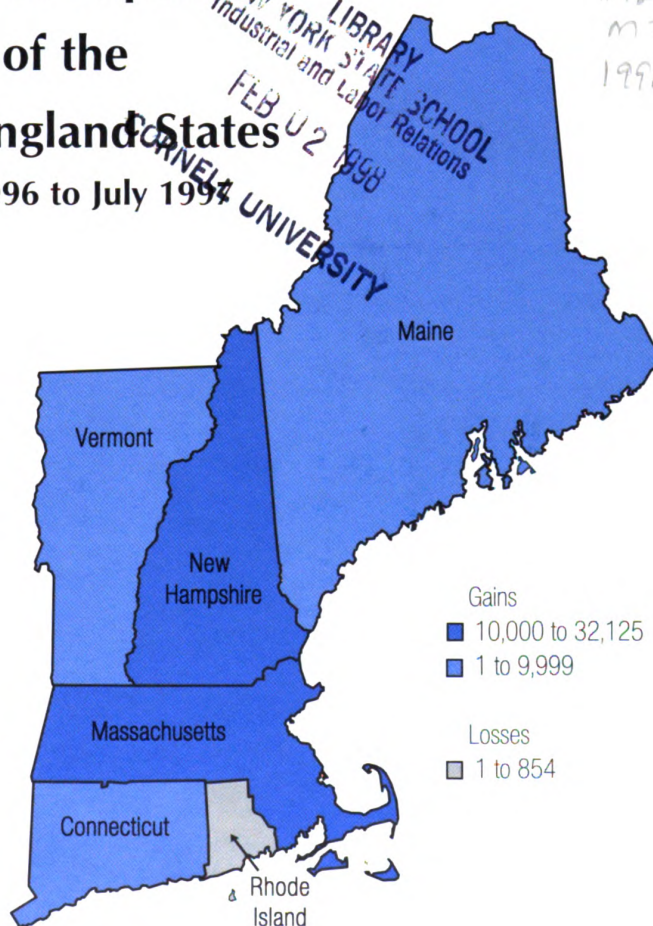
Maine records net immigration between 1996 and 1997 ... page 8

Change in Population

of the

New England States

July 1996 to July 1997



The population increased in five of the six New England States between July 1996 and July 1997. Gains ranged from 2,517 in Vermont to 32,125 in Massachusetts. Maine gained 3,485. Rhode Island's population declined by 854.

There were fewer people residing in Connecticut and Rhode Island in 1997 than in 1990. Maine, Massachusetts, New Hampshire, and Vermont recorded gains over the seven-year period of 10,799, 99,397, 60,885 and 24,531, respectively.

See page 8 for population estimates and components of change.

A publication of the

MAINE DEPARTMENT OF LABOR
Labor Market
Information Services

John A. Fongemie
Division Director

Dana A. Evans
Editor

For information, call

(207) 287-2271

(207) 287-2947

TDD 1-800-794-1110

E-Mail - lm@state.me.us

Visit our Home Page at
<http://ecuvax.cis.ecu.edu/~mainelmi/maine.html>

Civilian Labor Force, Employed, and Unemployed by Labor Market Area, Not Seasonally Adjusted

AREA	CIVILIAN LABOR FORCE ¹			EMPLOYED ²			UNEMPLOYED ³			UNEMPLOYMENT RATE ⁴		
	Nov 97	Oct 97	Nov 96	Nov 97	Oct 97	Nov 96	Nov 97	Oct 97	Nov 96	Nov 97	Oct 97	Nov 96
LABOR MARKET AREAS												
Augusta	46,150	47,080	47,370	44,050	44,970	45,080	2,100	2,110	2,280	4.6%	4.5%	4.8%
Bangor MSA	49,900	50,000	50,600	48,100	48,300	48,800	1,800	1,700	1,800	3.6	3.4	3.6
Bath-Brunswick	32,260	32,340	34,030	31,170	31,310	32,890	1,090	1,030	1,150	3.4	3.2	3.4
Belfast	14,230	14,530	13,370	13,490	13,910	12,640	740	620	730	5.2	4.3	5.4
Biddeford	36,280	38,400	38,190	34,970	37,340	36,760	1,320	1,060	1,430	3.6	2.8	3.7
Boothbay Harbor	7,860	8,540	8,180	7,510	8,340	7,910	350	200	280	4.4	2.3	3.4
Bucksport	5,030	5,110	5,200	4,720	4,870	4,870	300	240	340	6.0	4.8	6.4
Calais	5,420	5,360	5,400	4,830	4,830	4,880	600	520	520	11.0	9.8	9.6
Dexter-Pittsfield	14,260	14,410	14,150	12,990	13,310	12,730	1,280	1,090	1,430	8.9	7.6	10.1
Dover-Foxcroft	7,240	7,280	7,580	6,730	6,800	7,020	510	470	560	7.1	6.5	7.4
Ellsworth-Bar Harbor	17,680	19,410	17,330	16,470	18,730	16,060	1,210	680	1,280	6.8	3.5	7.4
Farmington	17,720	17,770	17,760	16,420	16,550	16,440	1,290	1,230	1,330	7.3	6.9	7.5
Fort Kent	3,760	3,730	3,710	3,330	3,430	3,400	420	310	320	11.0	8.2	8.6
Greenville	1,090	1,140	1,090	980	1,060	1,000	110	80	90	9.9	7.2	8.3
Houlton	6,430	6,490	6,420	6,080	6,170	5,980	350	320	440	5.5	4.9	6.9
Jonesport-Milbridge	4,490	4,110	4,490	4,190	3,840	4,240	300	270	250	6.7	6.5	5.6
Kittery-York ⁵	20,080	20,370	20,880	19,830	20,140	20,470	250	230	410	1.3	1.1	1.9
Lewiston-Auburn MSA	53,300	53,500	53,200	50,700	51,100	50,700	2,600	2,400	2,500	4.8	4.5	4.8
Lincoln-Howland	5,770	5,830	5,910	5,350	5,430	5,500	420	400	410	7.2	6.8	7.0
Machias-Eastport	6,980	6,890	6,740	6,330	6,250	6,200	650	640	540	9.3	9.3	8.0
Madawaska	4,120	4,150	4,100	3,820	3,890	3,800	300	260	300	7.3	6.2	7.4
Millinocket-East Millinocket	5,260	5,350	5,100	4,790	4,890	4,740	470	460	360	9.0	8.6	7.1
Norway-Paris	11,460	11,510	11,100	10,730	10,830	10,440	730	690	660	6.4	6.0	6.0
Outer Bangor	7,610	7,510	8,290	7,150	7,060	7,720	460	450	560	6.0	6.0	6.8
Patten-Island Falls	1,970	1,960	2,020	1,790	1,820	1,830	180	130	190	9.2	6.7	9.2
Portland MSA	132,200	133,200	136,000	128,900	130,000	132,600	3,300	3,300	3,400	2.5	2.4	2.5
Presque Isle-Caribou	19,920	19,850	19,750	18,110	18,520	17,830	1,800	1,330	1,920	9.1	6.7	9.7
Rockland	24,320	25,760	24,420	23,440	25,060	23,650	880	700	770	3.6	2.7	3.1
Rumford	10,120	10,160	10,080	9,360	9,540	9,430	760	630	650	7.5	6.2	6.4
Sanford	22,430	22,680	22,960	21,230	21,660	21,410	1,210	1,030	1,560	5.4	4.5	6.8
Sebago Lakes Region	13,060	14,070	12,740	12,580	13,680	12,260	480	390	490	3.7	2.7	3.8
Skowhegan	16,140	16,380	16,670	14,820	15,160	15,390	1,330	1,220	1,280	8.2	7.4	7.7
Stonington	5,560	5,700	5,560	5,400	5,580	5,390	160	120	170	2.9	2.1	3.0
Van Buren	1,620	1,600	1,630	1,460	1,480	1,450	160	110	180	9.6	7.1	10.9
Waterville	24,230	24,590	25,220	22,650	23,020	23,550	1,580	1,560	1,670	6.5	6.4	6.6
MAINE	655,900	666,700	667,300	624,400	638,800	635,000	31,400	27,900	32,300	4.8	4.2	4.8
UNITED STATES (000)	136,912	136,665	134,973	130,999	130,671	128,157	5,914	5,995	6,816	4.3	4.4	5.0

¹ Civilian labor force, employed, and unemployed estimates are by place of residence. Current month estimates are preliminary; prior month and year-ago estimates are revised. Items may not add due to rounding. All data exclude members of the Armed Forces. MSA stands for Metropolitan Statistical Area.

² Total employment includes nonfarm wage and salary workers, agricultural workers, unpaid family workers, domestics, the self employed, and workers involved in labor disputes.

³ People are classified as unemployed, regardless of their eligibility for unemployment benefits or public assistance, if they meet all of the following: they were not employed during the survey week; they were available for work at that time; and they made specific efforts to find employment some time during the prior four weeks. Persons laid off from their former jobs and awaiting recall and those expecting to report to a job within 30 days need not be looking for work to be counted as unemployed.

⁴ The unemployment rate is calculated by dividing the total number of unemployed by the total civilian labor force, and is expressed as a percent.

⁵ Kittery-York is the five-town Maine portion of the Portsmouth-Rochester PMSA which includes towns in both Maine and New Hampshire.

Source: Maine Department of Labor, Labor Market Information Services, in cooperation with the U.S. Department of Labor, Bureau of Labor Statistics.



Civilian Labor Force, Employed, and Unemployed by County, Not Seasonally Adjusted¹

AREA	CIVILIAN LABOR FORCE			EMPLOYED			UNEMPLOYED			UNEMPLOYMENT RATE		
	Nov 97	Oct 97	Nov 96	Nov 97	Oct 97	Nov 96	Nov 97	Oct 97	Nov 96	Nov 97	Oct 97	Nov 96
COUNTY												
Androscoggin	59,470	59,700	59,470	56,590	57,000	56,620	2,880	2,700	2,850	4.8%	4.5%	4.8%
Aroostook	37,420	37,370	37,180	34,200	34,900	33,860	3,230	2,480	3,320	8.6	6.6	8.9
Cumberland	139,000	140,400	142,970	135,450	137,000	139,370	3,540	3,410	3,600	2.5	2.4	2.5
Franklin	14,810	14,860	14,900	13,750	13,850	13,760	1,060	1,000	1,140	7.2	6.8	7.7
Hancock	25,780	27,500	25,620	24,240	26,610	23,970	1,530	920	1,650	5.9	3.3	6.4
Kennebec	60,350	61,540	62,210	57,320	58,400	58,950	3,000	3,100	3,260	5.0	5.0	5.2
Knox	21,630	22,900	21,750	20,840	22,270	21,020	790	630	730	3.7	2.7	3.3
Lincoln	16,030	16,910	16,560	15,330	16,400	15,960	700	510	590	4.4	3.0	3.6
Oxford	26,230	26,740	25,710	24,560	25,300	24,240	1,670	1,440	1,470	6.4	5.4	5.7
Penobscot	76,360	76,800	77,840	72,530	73,230	73,750	3,830	3,570	4,090	5.0	4.6	5.3
Piscataquis	8,420	8,510	8,760	7,790	7,950	8,100	630	560	660	7.4	6.6	7.5
Sagadahoc	14,760	14,820	15,580	14,280	14,340	15,060	480	480	520	3.3	3.3	3.4
Somerset	26,420	26,780	26,860	24,260	24,810	24,850	2,160	1,970	2,010	8.2	7.4	7.5
Waldo	19,480	19,760	18,850	18,360	18,850	17,710	1,130	910	1,150	5.8	4.6	6.1
Washington	17,210	16,740	16,950	15,670	15,290	15,610	1,540	1,450	1,330	9.0	8.6	7.9
York	92,540	95,400	96,110	89,280	92,610	92,210	3,260	2,790	3,910	3.5	2.9	4.1
MAINE	655,900	666,700	667,300	624,400	638,800	635,000	31,400	27,900	32,300	4.8	4.2	4.8
UNITED STATES (000)	136,912	136,665	134,973	130,999	130,671	128,157	5,914	5,995	6,816	4.3	4.4	5.0

¹ See page 2 for footnotes 1 through 4 and source.

Area Analyst's Corner

Central Area

(207) 287-2271

The People of the Kennebec, a business and community organization, will be selecting a Super Business Park site from among three communities in the Central Maine area: Augusta, Oakland, and Waterville. After certain conditions are met, the site selected will then compete with other regional sites in the state for a \$1 million Community Development Block Grant.

Western Area

Gerard Dennison (207) 783-5314

The Norway-Paris Area economy should be stronger and more stable in 1998 thanks to two new employers who moved in last fall. One company, New Balance Footwear, located in Norway, plans to expand to about 140 employees by the end of 1998. And ICT Telemarketing Group in Oxford, currently employing about 80 people, hopes to boost employment to approximately 250 people by next summer.

Southern Area

Eva Smith (207) 822-0216

Fourteen of about 30 vendor spots available in the 37,000 square foot Portland Public Market, scheduled to open this spring, have been taken. The vendors will include a mix of both start up and established retailers offering a variety of goods. The core products will be meat, poultry, seafood, produce, and baked goods. The public market is expected to attract 17,000 shoppers a week, adding substantially to the economic viability of Portland's downtown area.

North/East Area

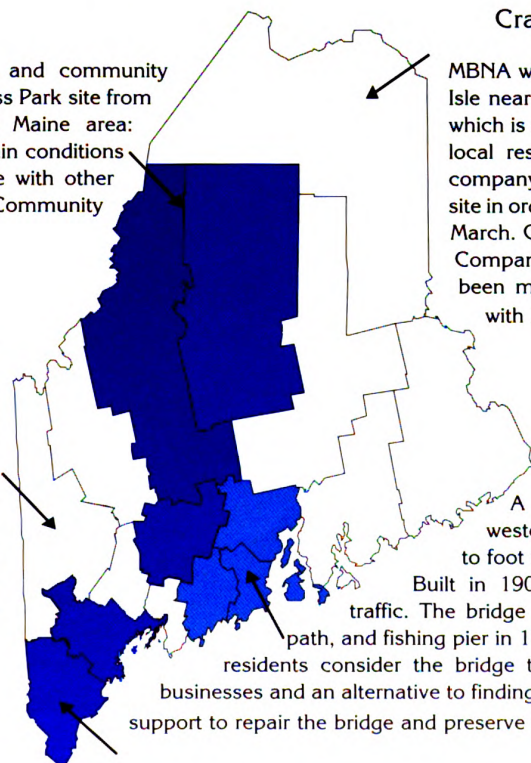
Craig Holland (207) 941-3076

MBNA will purchase a 15.4 acre site in Presque Isle near Route 1 to construct their new facility which is expected to employ approximately 300 local residents. In December, the credit card company leased the former Brooks Drug Store site in order to begin operations before the end of March. Congratulations to the Old Town Canoe Company on their 100th anniversary. They have been making a world class product in Maine with local craftsmen since 1898.

Coastal Area

Ken Bridges (207) 287-2271

A footbridge linking the eastern and western sides of Belfast was recently closed to foot traffic due to its deteriorating condition. Built in 1902, the bridge once carried vehicular traffic. The bridge became a pedestrian crossing, biking path, and fishing pier in 1963 when a new bridge was built. Many residents consider the bridge to be an important link to downtown businesses and an alternative to finding downtown parking. The city is seeking support to repair the bridge and preserve a historic landmark.



Civilian Labor Force, Employed, and Unemployed in Maine, Seasonally Adjusted (in thousands)

ITEM	1997											1996	
	Nov	Oct	Sep	Aug	Jul	Jun	May	Apr	Mar	Feb	Jan	Dec	Nov
Civilian Labor Force	661.3	667.5	667.1	669.1	668.4	670.0	668.7	669.1	672.6	666.8	667.8	674.7	674.0
Employed	630.1	634.4	635.3	637.3	634.3	637.8	636.3	637.3	643.3	637.9	638.1	643.1	641.9
Unemployed	31.2	33.1	31.8	31.7	34.1	32.1	32.4	31.8	29.4	29.0	29.7	31.6	32.0
Unemployment Rate (%)	4.7	5.0	4.8	4.7	5.1	4.8	4.8	4.7	4.4	4.3	4.4	4.7	4.8

¹ See page 2 for footnotes 1 through 4 and source.

Nonfarm Wage and Salary Employment in Maine, Seasonally Adjusted¹ (in thousands)

INDUSTRY	1997											1996	
	Nov	Oct	Sep	Aug	Jul	Jun	May	Apr	Mar	Feb	Jan	Dec	Nov
Nonfarm Wage and Salary Employment ²	555.8	553.0	553.2	551.2	549.8	548.0	546.4	546.3	546.5	545.7	545.2	540.8	541.2
Construction	24.7	24.2	24.4	24.5	24.2	24.0	23.6	23.4	23.7	23.5	23.8	23.6	23.7
Manufacturing	88.1	87.7	88.0	88.3	87.0	87.7	88.0	87.7	87.9	87.7	87.8	87.4	87.6
Durable Goods	41.5	41.5	41.3	41.2	40.8	40.8	41.1	41.2	41.1	41.1	41.0	41.2	41.3
Nondurable Goods	46.6	46.3	46.7	47.1	46.2	46.9	46.9	46.5	46.8	46.6	46.8	46.2	46.3
Transportation and Public Utilities	22.5	22.5	22.8	21.8	22.6	22.5	22.7	22.6	22.6	22.7	22.8	22.5	22.4
Wholesale Trade	26.9	27.1	27.2	27.1	27.0	26.8	26.8	26.6	26.4	26.4	26.2	26.0	25.8
Retail Trade	115.1	113.9	113.1	112.2	112.2	111.3	111.4	111.0	111.3	110.9	110.9	108.1	109.7
Finance, Insurance, and Real Estate	27.7	27.6	27.4	27.5	27.4	26.9	27.1	27.1	27.2	27.2	27.4	27.1	26.9
Services	157.6	156.8	156.5	156.6	156.2	155.3	154.5	154.7	153.9	154.0	152.9	152.4	151.7
Government	93.1	93.1	93.7	93.1	93.1	93.4	92.2	93.1	93.4	93.2	93.3	93.6	93.3

¹ See footnotes 1 and 2 on page 6. ² Mining employment is not suitable for seasonal adjustment because it has very little seasonal and irregular movement. Thus, the not-seasonally-adjusted series is used as a component of the seasonally adjusted total nonfarm wage and salary employment estimate. Source: See page 2.

November Unemployment Rate Falls to 4.7 Percent

State Labor Commissioner Valerie Landry announced that Maine's seasonally-adjusted unemployment rate fell from 5.0 percent in October to 4.7 percent in November.

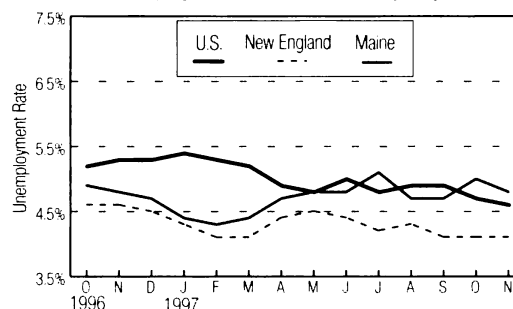
"The number of unemployed fell by 1,900 between October and November," said Commissioner Landry. "Seasonally-adjusted unemployment also was down slightly from November 1996, with an over-the-year drop in unemployment of 800 and a decline in the unemployment rate from 4.8 percent to 4.7 percent."

Seasonally-adjusted nonfarm wage and salary employment increased by 2,800 between October and November. The largest gains were in retail trade, services, and construction. Over the past year nonfarm wage and salary jobs increased by 14,600, with most of the growth in services and retail trade.

Other New England states which have reported their seasonally-adjusted unemployment rates for November include Rhode Island, 4.8 percent; Massachusetts, 3.9 percent; Vermont, 3.6 percent; and New Hampshire, 3.1 percent. The adjusted national rate for November was 4.6 percent.

Maine's not-seasonally-adjusted unemployment rate was 4.8 percent in November, up from 4.2 percent in October

Unemployment Rates, Seasonally Adjusted



and unchanged from 4.8 percent in November 1996. The unadjusted national rate was 4.3 percent in November, down from 4.4 percent in October and 5.0 percent in November 1996. Not-seasonally-adjusted unemployment rates in Maine counties ranged from 2.5 percent in Cumberland County to 9.0 percent in Washington County.

Not-seasonally-adjusted nonfarm wage and salary jobs fell seasonally by 1,000 from October to November. As expected at this time of year, there were losses in lodging services, eating and drinking places, amusement and recreation services, and construction. Job gains were



Labor Market Information Services

Digitized by Google

Original from
CORNELL UNIVERSITY

Selected Regular Unemployment Compensation Program Indicators

Key Data	Nov 1997	Oct 1997	Nov 1996
Average Duration	16.5	16.2	14.1
Average Weekly Benefit Amount*	\$141.57	\$142.29	\$169.71
Exhaustees	1,117	1,000	870

* For totally unemployed claimants, excluding dependency allowances.

Weekly Initial Claims

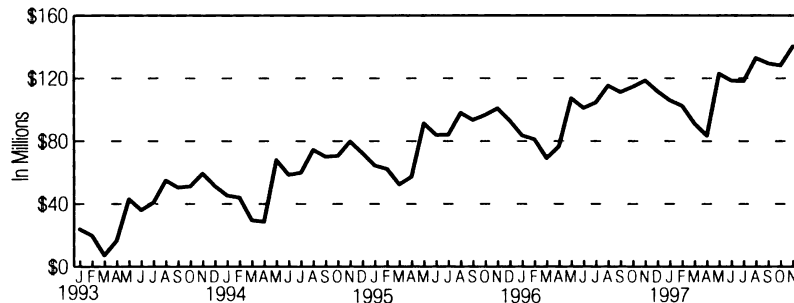
Week	12/13	12/6	11/29	11/22	11/15	11/8	11/1
1997	2,070	2,223	1,786	1,776	1,548	1,551	1,865
Week	12/14	12/7	11/30	11/23	11/16	11/9	11/2
1996	2,511	2,850	1,727	2,045	1,827	2,016	2,451

Continued Claims Less Partial*

	Nov 1997	Oct 1997	Nov 1996
	7,272	5,833	9,355

* For the week including the 12th of the month.

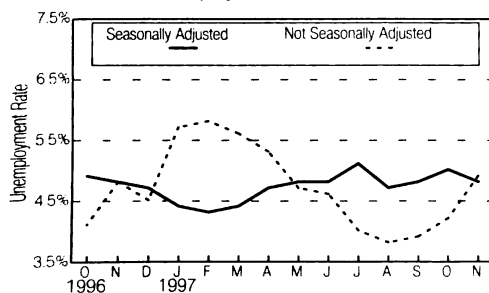
Monthly Unemployment Insurance Trust Fund Balance



recorded in local government and durable goods manufacturing.

Over the year, not-seasonally-adjusted nonfarm wage and salary employment rose by 14,500. All of the major industry divisions, with the exception of government, recorded job gains. Services increased by 5,900, largely in social services and business services. Retail trade increased by 5,400, with the largest gain in miscellaneous retail.

Unemployment Rates for Maine

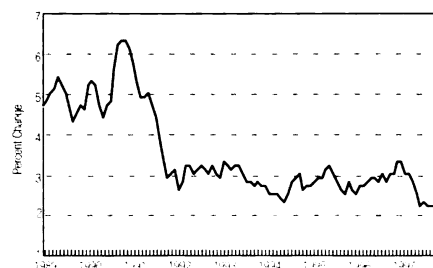


U.S. Consumer Price Index for all urban consumers (CPI-U)

Item	Nov 97	Oct 97	Nov 96	Dec 96
(1982-1984 = 100) All Items	161.5	161.6	158.6	158.6

Percent Change from Prior Month	-0.1%
Percent Change from 12 Months Ago	+1.8%
Percent change from Last December	+1.8%

Over-the-Year Change in CPI-U



Nonfarm Wage and Salary Employment, Not Seasonally Adjusted

(In thousands)

INDUSTRY	MAINE			PORTLAND MSA			LEWISTON-AUBURN MSA		
	Nov 97	Oct 97	Nov 96	Nov 97	Oct 97	Nov 96	Nov 97	Oct 97	Nov 96
Nonfarm Wage and Salary Employment¹	563.5	564.5	549.0	142.3	141.6	141.9	43.6	43.3	42.1
Goods Producing	115.8	115.6	114.3	21.6	22.0	21.3	9.7	9.9	9.4
Mining	0.1	0.1	0.1	*	*	*	*	*	*
Construction	26.2	27.0	25.2	6.5	6.7	6.5	1.9	1.9	1.6
Building Construction	6.2	6.3	5.9	1.2	1.2	1.2	*	*	*
Heavy Construction	4.5	4.7	4.8	*	*	*	*	*	*
Special Trade Contractors	15.5	16.0	14.5	4.7	4.8	4.8	*	*	*
Manufacturing	89.5	88.5	89.0	15.1	15.3	14.8	7.8	8.0	7.8
Durable Goods	42.6	41.8	42.4	7.3	7.3	7.2	2.2	2.3	2.4
Lumber and Wood Products	10.8	10.9	10.5	*	*	*	*	*	*
Primary and Fabricated Metals	3.5	3.5	3.9	*	*	*	*	*	*
Industrial Machinery and Equipment	4.4	4.4	4.3	1.5	1.5	1.3	*	*	*
Electronic and Other Electrical Equipment	7.8	7.7	7.0	2.7	2.7	2.4	*	*	*
Transportation Equipment	10.6	10.6	11.2	*	*	*	*	*	*
Other Durable Goods	5.5	4.7	5.5	3.1	3.1	3.5	*	*	*
Nondurable Goods	46.9	46.7	46.6	7.8	8.0	7.6	5.6	5.7	5.4
Food and Kindred Products	6.6	6.6	6.6	2.1	2.1	2.1	*	*	*
Textile Mill Products	4.9	4.9	4.8	*	*	*	*	*	*
Apparel and Other Textile Products	2.0	1.9	2.2	*	*	*	*	*	*
Paper and Allied Products	14.4	14.1	14.6	*	*	*	*	*	*
Printing and Publishing	5.7	5.7	5.7	1.7	1.7	1.7	*	*	*
Rubber and Misc. Plastic Products	3.1	3.1	3.0	*	*	*	*	*	*
Leather and Leather Products	8.1	8.2	7.7	1.2	1.3	1.0	1.0	1.1	1.1
Other Nondurable Goods	2.1	2.2	2.0	2.8	2.9	2.8	4.6	4.6	4.3
Service Producing	447.7	448.9	434.7	120.7	119.6	120.6	33.9	33.4	32.7
Transportation and Public Utilities	22.7	22.9	22.6	6.2	6.3	6.3	2.0	2.0	1.9
Wholesale Trade	26.9	27.1	25.8	9.8	9.9	9.6	2.2	2.3	2.2
Retail Trade	116.9	116.5	111.5	33.7	31.9	33.2	9.3	9.0	9.0
General Merchandise Stores	13.2	12.7	12.5	*	*	*	*	*	*
Food Stores	19.9	20.1	19.3	*	*	*	*	*	*
Automotive Sales and Services	12.9	12.9	12.6	*	*	*	*	*	*
Eating and Drinking Places	33.2	35.4	32.5	7.9	8.0	8.2	*	*	*
Other Retail Trade	37.7	35.4	34.6	*	*	*	*	*	*
Finance, Insurance, and Real Estate	27.5	27.4	26.7	12.6	12.5	12.4	2.1	2.1	2.0
Banking	8.4	8.4	8.1	*	*	*	*	*	*
Insurance Carriers, Brokers and Agents	11.6	11.6	11.5	*	*	*	*	*	*
Other Finance, Insurance, and Real Estate	7.5	7.4	7.1	*	*	*	*	*	*
Services	155.7	158.8	149.8	40.1	40.7	40.3	13.4	13.2	12.7
Hotels and Other Lodging Places	8.0	10.4	7.6	*	*	*	*	*	*
Business Services	21.6	21.0	19.8	*	*	*	*	*	*
Health Services	51.5	51.5	51.4	*	*	*	*	*	*
Educational Services	13.6	13.7	13.4	*	*	*	*	*	*
Social Services	20.6	20.4	18.0	*	*	*	*	*	*
Other Services	40.4	41.8	39.6	*	*	*	*	*	*
Government	98.0	96.2	98.3	18.3	18.3	18.8	4.9	4.8	4.9
Federal	12.8	12.7	13.1	2.2	2.2	2.2	0.3	0.3	0.3
State	26.6	26.7	27.0	5.0	5.0	4.8	0.7	0.7	0.7
Local ²	58.6	56.8	58.2	11.1	11.1	11.8	3.9	3.8	3.9

¹ Nonfarm wage and salary employment estimates include all full- and part-time wage and salary workers who worked during or received pay for the pay period which includes the 12th of the month. Domestic workers in private households, proprietors, the self-employed, and unpaid family workers are excluded. Estimates measure the number of jobs by industry. Current month's estimates are preliminary; prior month and year-ago estimates are revised. These estimates are benchmarked to March 1995. As a measure of reliability, the March 1995 benchmark revision for total nonfarm wage and salary employment was .04 percent lower than the original sample-based estimate.

² Regular teachers are included in summer months whether or not specifically paid in those months.

* Where an employment estimate is not entered, either the data is not available in sufficient detail for publication or is nondisclosable by law.

Source: See page 2.



Earnings and Hours of Production Workers in Manufacturing Industries¹ Not Seasonally Adjusted

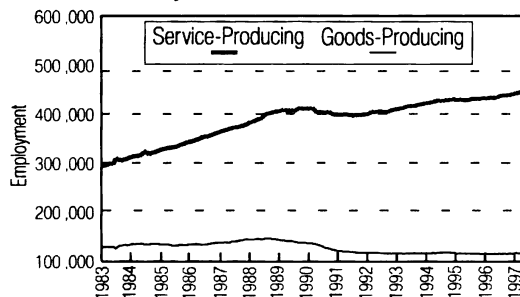
AREA AND INDUSTRY	AVERAGE WEEKLY EARNINGS			AVERAGE WEEKLY HOURS			AVERAGE HOURLY EARNINGS			ANNUAL AVERAGE HOURLY EARNINGS		
	Nov 97	Oct 97	Nov 96	Nov 97	Oct 97	Nov 96	Nov 97	Oct 97	Nov 96	1996	1995	1994
STATEWIDE												
Manufacturing	\$532.67	\$529.10	\$523.18	40.6	40.7	40.4	\$13.12	\$13.00	\$12.95	\$12.71	\$12.42	\$11.88
Durable Goods	507.83	511.48	501.02	40.4	40.4	40.8	12.57	12.66	12.28	12.23	12.22	11.80
Lumber and Wood Products	435.63	442.80	430.61	42.5	42.7	42.3	10.25	10.37	10.18	10.10	9.80	9.46
Primary and Fabricated Metals	475.45	464.13	434.56	41.2	40.5	38.8	11.54	11.46	11.20	11.31	11.07	11.04
Industrial Machinery and Equipment	678.30	655.33	630.84	45.1	44.1	43.9	15.04	14.86	14.37	14.17	13.67	13.88
Electronic and Other Electric Equipment	399.99	393.60	417.28	36.1	35.3	37.9	11.08	11.15	11.01	10.94	10.76	10.72
Transportation Equipment	656.31	651.90	653.02	39.3	39.2	41.7	16.70	16.63	15.66	15.49	16.43	15.17
Other Durable Goods	411.88	448.59	374.03	40.7	42.4	38.6	10.12	10.58	9.69	10.08	9.67	9.34
Nondurable Goods	555.96	546.53	543.60	40.7	41.0	40.0	13.66	13.33	13.59	13.17	12.61	11.95
Food and Kindred Products	360.25	388.00	368.69	36.5	38.8	35.9	9.87	10.00	10.27	10.00	9.75	9.54
Textile Mill Products	460.75	480.87	436.80	46.4	47.8	42.0	9.93	10.06	10.40	10.27	10.17	9.38
Apparel and Other Textile Products	416.07	377.71	385.33	41.9	39.1	39.4	9.93	9.66	9.78	9.00	8.32	8.08
Paper and Allied Products	870.75	833.43	842.47	43.0	42.5	42.7	20.25	19.61	19.73	18.84	18.22	17.03
Leather and Leather Products	344.70	336.92	341.33	38.6	38.2	38.7	8.93	8.82	8.82	8.71	8.54	8.30
Other Nondurable Goods	454.69	460.99	433.15	38.5	39.3	38.4	11.81	11.73	11.28	11.20	10.88	10.62
PORTLAND MSA												
Manufacturing	421.85	429.90	460.13	37.8	38.8	40.9	11.16	11.08	11.25	11.22	11.02	10.78
LEWISTON-AUBURN MSA												
Manufacturing	497.21	481.85	460.49	42.9	41.9	40.5	11.59	11.50	11.37	11.13	10.11	9.76

¹ Hours worked and earnings data are computed based on payroll figures for the week including the 12th of the month for manufacturing production workers.

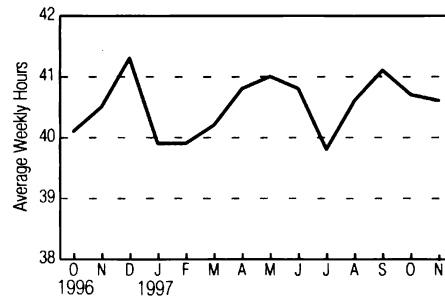
Average hourly earnings are calculated on a gross basis, and include such factors as premium pay for overtime and shift differential, as well as changes in basic hourly and incentive rates of pay. Average weekly earnings are the product of weekly hours worked and hourly earnings.

Source: See page 2.

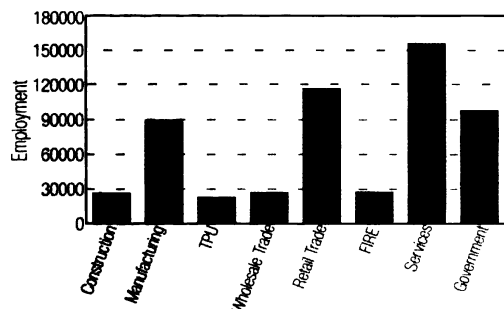
Nonfarm Employment by Sector
January 1983-November 1997, Maine¹



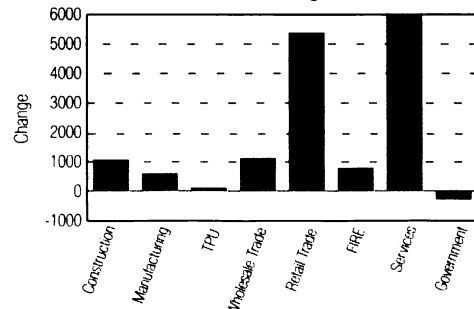
Hours Worked by Manufacturing
Production Workers, Maine²



Nonfarm Employment by Industry Division
Maine, November 1997²



Nonfarm Employment by Industry Division
Maine, Over-the-Year Change, November 1997²



¹ Seasonally Adjusted ² Not Seasonally Adjusted



Population Change of the New England States

The demographic components of population change consist of natural change and net migration. Natural change is defined as births minus deaths. Net migration is the difference between all forms of migration into and out of an area.

The U.S. Department of Commerce, Bureau of the Census, recently released state population estimates for 1997. In Maine, the 1997 population was 1,242,051, an increase of 3,485 over 1996. Contributing to this increase in population was a natural change of 1,062 and a net immigration of 1,523.

More people moved into Maine than left Maine between 1995 and 1997, which is a reversal of the previous five years. Between 1990 and 1995 more people left Maine than moved into Maine each year. One possible reason for this reversal is an improved economic climate.

Of the six New England states, the 1997 population of Rhode Island and Connecticut was below the 1990 population. In both cases, the net outmigration of people outweighed the natural increase. Although Maine and Massachusetts also had a net outmigration of people over this seven-year period, it was more than offset by the natural increase in the population.

Population and Components of Change, July, 1996 to 1997

Area	Year		Change		Components of Change		
	1996	1997	Net	Percent	Births	Deaths	Net Migration ¹
New England	13,326,211	13,378,545	52,334	0.4	173,028	122,175	1,481
Maine	1,238,566	1,242,051	3,485	0.3	13,819	11,857	1,523
New Hampshire	1,160,213	1,172,709	12,496	1.1	14,604	9,524	7,416
Vermont	586,461	588,978	2,517	0.4	6,779	4,918	656
Massachusetts	6,085,395	6,117,520	32,125	0.5	80,694	56,071	7,502
Rhode Island	988,283	987,429	-854	-0.1	12,551	9,704	-3,701
Connecticut	3,267,293	3,269,858	2,565	0.1	44,581	30,101	-11,915

Population and Components of Change, July, 1990 to 1997

Area	Year		Change		Components of Change		
	1990	1997	Net	Percent	Births	Deaths	Net Migration ¹
New England	13,219,210	13,378,545	159,338	1.2	1,278,078	823,635	-295,108
Maine	1,231,252	1,242,051	10,799	0.9	105,679	80,876	-14,004
New Hampshire	1,111,824	1,172,709	60,885	5.5	108,271	62,755	15,369
Vermont	564,447	588,978	24,531	4.3	51,746	33,831	6,616
Massachusetts	6,018,123	6,117,520	99,397	1.7	593,033	384,699	-108,937
Rhode Island	1,004,624	987,429	-17,195	-1.7	94,131	57,869	-53,457
Connecticut	3,288,910	3,269,858	-19,052	-0.6	325,218	203,605	-140,665

¹Includes net domestic migration, net Federal movement, net international migration, and a residual.

Source: U.S. Department of Commerce, Bureau of the Census

If you do **NOT** desire to continue receiving this publication, check here ☐ and return this cover to the address below.

If your address has changed, please indicate change and return this cover to the address below.

Maine Department of Labor
Labor Market Information Services
20 Union Street
Augusta, Maine 04330-6826

PRESORTED FIRST CLASS MAIL
POSTAGE PAID
US DEPT. OF LABOR
PERMIT NO. G-12

93000023

MARTIN P. CATHERWOOD LIBRARY
 INDUS. & LABOR RELATIONS SCHOOL
 ITHACA, NY 14853-3901