

9-1-1997

# Labor Market Digest, September 1997

Maine Department of Labor

Maine Center for Workforce Research and Information

Follow this and additional works at: [http://digitalmaine.com/cwri\\_docs](http://digitalmaine.com/cwri_docs)

---

## Recommended Citation

Maine Department of Labor and Maine Center for Workforce Research and Information, "Labor Market Digest, September 1997" (1997). *Center for Workforce Research and Information Documents*. Paper 842.  
[http://digitalmaine.com/cwri\\_docs/842](http://digitalmaine.com/cwri_docs/842)

This Text is brought to you for free and open access by the Labor at Maine State Documents. It has been accepted for inclusion in Center for Workforce Research and Information Documents by an authorized administrator of Maine State Documents. For more information, please contact [statedocs@maine.gov](mailto:statedocs@maine.gov).

# Maine Department of Labor

## LABOR MARKET DIGEST

July Data

LIBRARY USE ONLY

September 1997

### INSIDE . . .

Cumberland County recorded lowest unemployment rate in the state ..... page 3

Adjusted unemployment fell slightly in June ..... page 4

Nonfarm employment rose seasonally by 13,300 over the month ..... page 6

Average hourly earnings of manufacturing production workers increased by 3.7 percent over the year ..... page 7

A publication of the

**MAINE DEPARTMENT OF LABOR**  
Labor Market  
Information Services

Raynold A. Fongemie  
Division Director

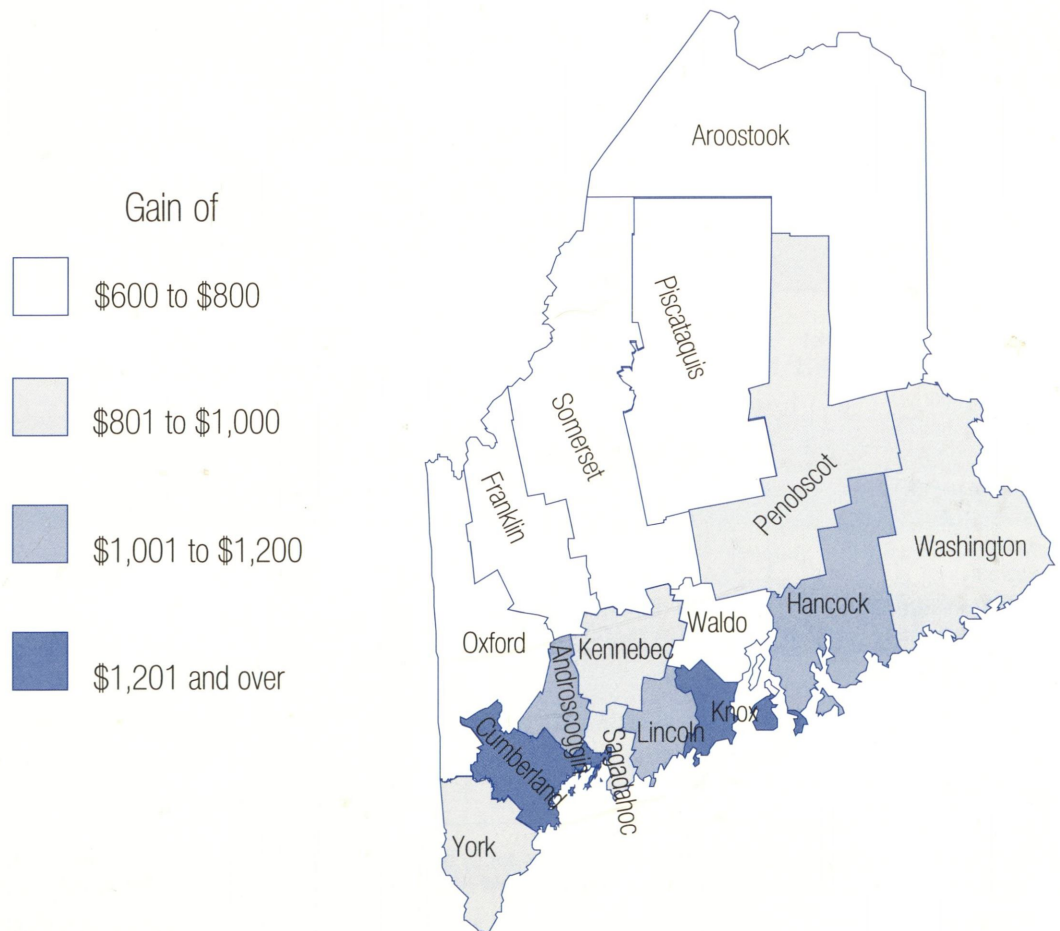
Dana A. Evans  
Editor

#### For more information, call

Telephone (207) 287-2271  
FAX (207) 287-2947  
TDD 1-800-794-1110  
E-Mail - lmi.me@state.me.us

Visit our Home Page at  
<http://ecuvax.cis.ecu.edu/~mainelmi/maine.html>

### Change in Per Capita Personal Income for Maine Counties 1994 to 1995



Per capita personal income increased in all Maine counties between 1994 and 1995 according to data recently released by the U.S. Department of Labor, Bureau of Labor Statistics. Gains ranged from \$666 in Aroostook County to \$1,288 in Cumberland County.

See page 8 for more information.



## Civilian Labor Force, Employed, and Unemployed by Labor Market Area, Not Seasonally Adjusted

AREA	CIVILIAN LABOR FORCE <sup>1</sup>			EMPLOYED <sup>2</sup>			UNEMPLOYED <sup>3</sup>			UNEMPLOYMENT RATE		
	Jul 97	Jun 97	Jul 96	Jul 97	Jun 97	Jul 96	Jul 97	Jun 97	Jul 96	Jul 97	Jun 97	Jul 96
<b>LABOR MARKET AREAS</b>												
Augusta	48,050	47,780	49,170	46,130	45,570	47,050	1,920	2,210	2,130	4.0%	4.6%	4.3%
Bangor MSA	50,300	50,000	50,300	48,700	48,200	48,700	1,500	1,800	1,600	3.1	3.6	3.1
Bath-Brunswick	34,800	34,640	36,440	33,810	33,460	35,350	990	1,180	1,090	2.9	3.4	3.0
Belfast	14,910	15,200	13,730	14,380	14,520	13,150	530	680	580	3.6	4.5	4.2
Biddeford	43,870	43,150	44,830	42,900	42,030	43,830	970	1,120	1,000	2.2	2.6	2.2
Boothbay Harbor	10,360	9,790	10,650	10,210	9,580	10,470	160	210	180	1.5	2.1	1.7
Bucksport	5,230	5,360	5,300	4,980	5,070	5,060	250	290	240	4.9	5.4	4.5
Calais	5,330	5,480	5,340	4,780	4,770	4,880	550	710	460	10.4	12.9	8.5
Dexter-Pittsfield	13,440	14,280	13,010	12,270	13,040	11,940	1,170	1,240	1,070	8.7	8.7	8.2
Dover-Foxcroft	7,300	7,690	7,360	6,830	7,150	6,910	470	540	460	6.4	7.0	6.2
Ellsworth-Bar Harbor	22,290	21,620	21,620	21,730	20,840	21,060	560	780	560	2.5	3.6	2.6
Farmington	18,090	18,340	17,890	16,790	16,830	16,790	1,290	1,510	1,100	7.1	8.2	6.2
Fort Kent	3,630	3,770	3,770	3,290	3,160	3,410	340	600	360	9.5	16.0	9.6
Greenville	1,210	1,220	1,210	1,160	1,140	1,150	50	80	60	4.4	6.7	4.8
Houlton	6,710	6,970	6,630	6,300	6,440	6,140	410	530	500	6.1	7.6	7.5
Jonesport-Milbridge	4,340	4,230	4,450	4,080	3,930	4,220	260	300	230	5.9	7.0	5.1
Kittery-York <sup>5</sup>	21,330	20,810	21,360	21,080	20,530	21,080	250	280	280	1.2	1.3	1.3
Lewiston-Auburn MSA	52,300	52,500	51,900	49,800	49,900	49,100	2,500	2,600	2,800	4.8	5.0	5.4
Lincoln-Howland	5,900	6,020	6,040	5,540	5,510	5,710	360	510	330	6.2	8.5	5.4
Machias-Eastport	6,880	6,920	6,800	6,310	6,210	6,320	570	710	480	8.3	10.2	7.1
Madawaska	4,420	4,470	4,440	4,230	4,210	4,230	200	260	200	4.4	5.8	4.6
Millinocket-East Millinocket	5,410	5,420	5,350	5,090	5,020	5,020	320	400	330	5.9	7.3	6.1
Norway-Paris	11,670	11,630	11,540	11,020	10,950	10,850	650	680	690	5.6	5.8	6.0
Outer Bangor	7,210	8,050	7,550	6,730	7,540	7,090	480	510	460	6.7	6.3	6.1
Patten-Island Falls	2,060	2,170	2,090	1,910	1,900	1,920	150	270	170	7.2	12.4	8.2
Portland MSA	136,300	133,300	137,200	133,400	130,000	134,100	2,900	3,400	3,100	2.1	2.5	2.2
Presque Isle-Caribou	20,450	20,750	20,020	19,000	19,040	18,590	1,450	1,710	1,430	7.1	8.2	7.1
Rockland	26,650	26,440	26,890	26,000	25,620	26,300	650	820	590	2.4	3.1	2.2
Rumford	10,370	10,260	9,780	9,670	9,420	9,170	700	840	620	6.7	8.2	6.3
Sanford	23,410	23,240	22,910	22,460	22,120	21,780	960	1,110	1,130	4.1	4.8	4.9
Sebang Lakes Region	14,860	13,880	14,670	14,430	13,410	14,210	440	470	460	2.9	3.4	3.1
Skowhegan	16,100	16,990	16,320	14,780	15,690	15,150	1,320	1,300	1,170	8.2	7.7	7.1
Stonington	5,800	5,690	5,750	5,680	5,540	5,620	120	150	130	2.1	2.6	2.2
Van Buren	1,650	1,690	1,700	1,550	1,550	1,600	100	140	100	6.0	8.0	5.8
Waterville	23,790	25,360	24,630	22,530	23,910	22,930	1,270	1,460	1,700	5.3	5.7	6.9
MAINE	686,400	685,100	688,600	659,500	653,800	660,900	26,800	31,400	27,700	3.9	4.6	4.0
UNITED STATES (000)	138,331	137,557	136,272	131,350	130,463	128,579	6,981	7,094	7,693	5.0	5.2	5.6

<sup>1</sup> Civilian labor force, employed, and unemployed estimates are by place of residence. Current month estimates are preliminary; prior month and year-ago estimates are revised. Items may not add due to rounding. All data exclude members of the Armed Forces. MSA stands for Metropolitan Statistical Area.

<sup>2</sup> Total employment includes nonfarm wage and salary workers, agricultural workers, unpaid family workers, domestics, the self employed, and workers involved in labor disputes.

<sup>3</sup> People are classified as unemployed, regardless of their eligibility for unemployment benefits or public assistance, if they meet all of the following: they were not employed during the survey week; they were available for work at that time; and they made specific efforts to find employment some time during the prior four weeks. Persons laid off from their former jobs and awaiting recall and those expecting to report to a job within 30 days need not be looking for work to be counted as unemployed.

<sup>4</sup> The unemployment rate is calculated by dividing the total number of unemployed by the total civilian labor force, and is expressed as a percent.

<sup>5</sup> Kittery-York is the five-town Maine portion of the Portsmouth-Rochester PMSA which includes towns in both Maine and New Hampshire.

Source: Maine Department of Labor, Labor Market Information Services, in cooperation with the U.S. Department of Labor, Bureau of Labor Statistics.





## Civilian Labor Force, Employed, and Unemployed by County, Not Seasonally Adjusted<sup>1</sup>

AREA	CIVILIAN LABOR FORCE			EMPLOYED			UNEMPLOYED			UNEMPLOYMENT RATE		
	Jul 97	Jun 97	Jul 96	Jul 97	Jun 97	Jul 96	Jul 97	Jun 97	Jul 96	Jul 97	Jun 97	Jul 96
COUNTY												
Androscoggin	58,720	59,030	58,380	55,890	56,010	55,320	2,830	3,020	3,060	4.8%	5.1%	5.2%
Aroostook	38,460	39,320	38,220	35,830	35,850	35,440	2,630	3,470	2,790	6.8	8.8	7.3
Cumberland	144,660	141,440	145,970	141,500	137,740	142,630	3,160	3,700	3,340	2.2	2.6	2.3
Franklin	15,140	15,320	14,990	14,060	14,090	14,050	1,080	1,230	940	7.1	8.0	6.3
Hancock	30,360	29,740	29,750	29,540	28,660	28,930	820	1,080	820	2.7	3.6	2.7
Kennebec	61,780	62,680	63,450	59,130	59,670	60,280	2,640	3,020	3,170	4.3	4.8	5.0
Knox	23,690	23,510	23,900	23,110	22,780	23,380	590	730	530	2.5	3.1	2.2
Lincoln	19,110	18,480	19,610	18,670	17,940	19,150	440	540	460	2.3	2.9	2.3
Oxford	27,450	26,900	26,660	25,930	25,190	25,190	1,520	1,710	1,470	5.5	6.4	5.5
Penobscot	76,640	77,780	76,750	73,250	73,790	73,450	3,390	3,990	3,310	4.4	5.1	4.3
Piscataquis	8,600	9,000	8,660	8,070	8,370	8,140	540	630	530	6.2	7.0	6.1
Sagadahoc	15,940	15,890	16,760	15,480	15,320	16,190	460	570	580	2.9	3.6	3.4
Somerset	25,940	27,500	26,050	23,880	25,350	24,160	2,070	2,150	1,890	8.0	7.8	7.3
Waldo	20,100	20,520	19,070	19,300	19,550	18,190	800	970	880	4.0	4.7	4.6
Washington	17,010	17,050	17,010	15,620	15,350	15,860	1,390	1,700	1,160	8.1	10.0	6.8
York	102,800	100,990	103,400	100,300	98,130	100,600	2,500	2,860	2,800	2.4	2.8	2.7
<b>MAINE</b>	<b>686,400</b>	<b>685,100</b>	<b>688,600</b>	<b>659,500</b>	<b>653,800</b>	<b>660,900</b>	<b>26,800</b>	<b>31,400</b>	<b>27,700</b>	<b>3.9</b>	<b>4.6</b>	<b>4.0</b>
<b>UNITED STATES (000)</b>	<b>138,331</b>	<b>137,557</b>	<b>136,272</b>	<b>131,350</b>	<b>130,463</b>	<b>128,579</b>	<b>6,981</b>	<b>7,094</b>	<b>7,693</b>	<b>5.0</b>	<b>5.2</b>	<b>5.6</b>

<sup>1</sup> See page 2 for footnotes 1 through 4 and source.

### Area Analyst's Corner

#### Central Area

Alan Cox (207) 624-5190

During the year ending June 1997, loans were made to 32 businesses in 16 towns in Kennebec and Somerset counties from a revolving fund managed by the Kennebec Valley Council of Governments. The loans ranged from \$10,000 to \$150,000. KVCOG estimates 600 jobs were saved and 500 created as a result of the loan assistance. Over the past year tax incentives have encouraged nine new businesses, including Sears and a Friendly's Restaurant, to locate in Waterville.

#### Western Area

Gerard Dennison (207) 783-5314

New Balance Athletic Shoe Inc. purchased the former Norway Footwear plant in Norway. Prospective employees from the initial applicant pool will be offered 12 hours of training through the Maine Quality Center Program. Production is slated to begin by mid-September. The jobs will pay between \$8 and \$10 per hour, with benefits and profit sharing. Company officials expect the new plant will employ 100 people by June 1998.

#### Southern Area

Eva Smith (207) 822-0216

Hussey Seating Co. of North Berwick, one of the largest stadium seat manufacturers in the country, has submitted a bid to rebuild Sanford's Goodall Park baseball stadium. Goodall Park, a nostalgic landmark in the area, burned down last May. Hussey recently completed the installation of new seats in the renovated Merrill Auditorium in Portland City Hall. They are currently installing 73,000 new seats at the Redskin's Jack Cook Stadium in Washington, a 6.6 million dollar contract.

#### North/East Area

Craig Holland (207) 941-3076

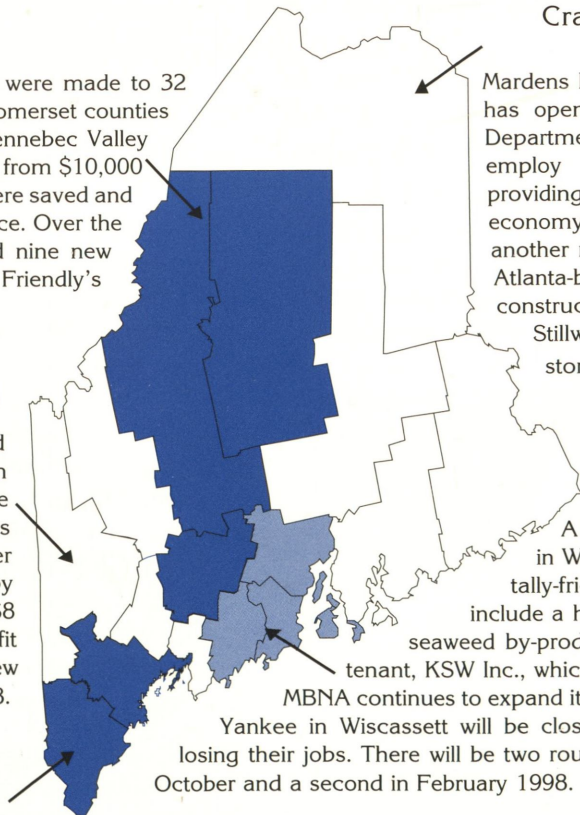
Mardens Discount Store, a Maine-based retailer, has opened at the site of the former Rich's Department Store in Calais. The store will employ approximately 75 local residents, providing a much-needed boost to the area economy. Bangor will soon see the opening of another national chain store. Home Depot, the Atlanta-based home improvement retailer, is constructing a 115,000 square foot store on Stillwater Avenue near the Bangor Mall. The store will open in December.

#### Coastal Area

Ken Bridges (207) 287-2271

A unique, privately-owned industrial park in Waldoboro seeks to attract environmentally-friendly businesses only. Current tenants include a hatchery and a maker of fertilizer from seaweed by-products. The park will soon have a new tenant, KSW Inc., which makes felt mats from recycled fiber.

MBNA continues to expand its workforce at its Belfast facility. Maine Yankee in Wiscasset will be closing, with approximately 250 workers losing their jobs. There will be two rounds of layoffs, one around the end of October and a second in February 1998.





**Civilian Labor Force, Employed, and Unemployed in Maine, Seasonally Adjusted (in thousands)**

ITEM	1997							1996					
	Jul	Jun	May	Apr	Mar	Feb	Jan	Dec	Nov	Oct	Sep	Aug	Jul
Civilian Labor Force	667.7	670.0	668.7	669.1	672.6	666.8	667.8	674.7	674.0	673.8	673.7	672.0	669.9
Employed	634.2	637.8	636.3	637.3	643.3	637.9	638.1	643.1	641.9	640.8	640.0	637.6	635.1
Unemployed	33.6	32.1	32.4	31.8	29.4	29.0	29.7	31.6	32.0	33.0	33.8	34.4	34.8
Unemployment Rate (%)	5.0	4.8	4.8	4.7	4.4	4.3	4.4	4.7	4.8	4.9	5.0	5.1	5.2

<sup>1</sup> See page 2 for footnotes 1 through 4 and source.

**Nonfarm Wage and Salary Employment in Maine, Seasonally Adjusted<sup>1</sup> (in thousands)**

INDUSTRY	1997							1996					
	Jul	Jun	May	Apr	Mar	Feb	Jan	Dec	Nov	Oct	Sep	Aug	Jul
Nonfarm Wage and Salary Employment <sup>2</sup>	549.5	548.0	546.4	546.3	546.5	545.7	545.2	540.8	541.2	541.0	542.1	539.8	538.8
Construction	24.2	24.0	23.6	23.4	23.7	23.5	23.8	23.6	23.7	23.8	23.5	23.3	23.0
Manufacturing	87.1	87.7	88.0	87.7	87.9	87.7	87.8	87.4	87.6	87.5	87.7	87.7	87.4
Durable Goods	40.8	40.8	41.1	41.2	41.1	41.1	41.0	41.2	41.3	41.3	41.5	41.7	41.6
Nondurable Goods	46.3	46.9	46.9	46.5	46.8	46.6	46.8	46.2	46.3	46.2	46.2	46.0	45.8
Transportation and Public Utilities	22.6	22.5	22.7	22.6	22.6	22.7	22.8	22.5	22.4	22.3	22.3	22.2	22.3
Wholesale Trade	26.9	26.8	26.8	26.6	26.4	26.4	26.2	26.0	25.8	25.9	25.9	25.8	25.7
Retail Trade	112.0	111.3	111.4	111.0	111.3	110.9	110.9	108.1	109.7	109.9	111.0	110.2	110.4
Finance, Insurance, and Real Estate	27.4	26.9	27.1	27.1	27.2	27.2	27.4	27.1	26.9	26.8	26.7	26.7	26.7
Services	156.2	155.3	154.5	154.7	153.9	154.0	152.9	152.4	151.7	151.2	150.8	150.7	150.3
Government	93.0	93.4	92.2	93.1	93.4	93.2	93.3	93.6	93.3	93.5	94.1	93.1	92.9

<sup>1</sup> See footnotes 1 and 2 on page 6. <sup>2</sup> Mining employment is not suitable for seasonal adjustment because it has very little seasonal and irregular movement. Thus, the not-seasonally-adjusted series is used as a component of the seasonally adjusted total nonfarm wage and salary employment estimate. Source: See page 2.

**July Unemployment Rate Rises Slightly; Down From Last Year**

State Labor Commissioner Valerie Landry announced that Maine's seasonally-adjusted unemployment rate rose slightly to 5.0 percent in July from 4.8 percent in June.

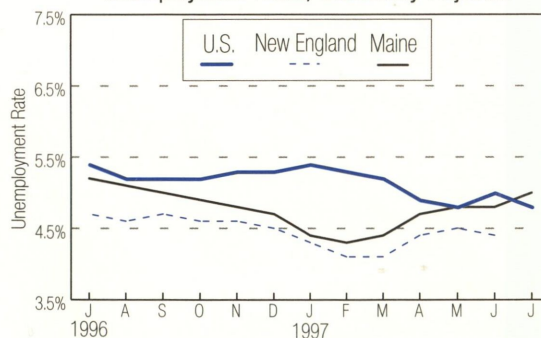
"Seasonally-adjusted unemployment rose and employment fell slightly in July. The decline in total employment was the result of a small drop in the number of self-employed, which more than offset an increase in the number of nonfarm wage and salary jobs," said Commissioner Landry. "Although unemployment increased slightly over the month, the July unemployment rate of 5.0 percent was below the year-ago rate of 5.2 percent."

Seasonally-adjusted nonfarm wage and salary employment increased by 1,500 between June and July due to small gains in most of the major industries. Over the past year, nonfarm employment rose by 10,700, mainly in services, retail trade, wholesale trade, and construction.

Other New England states which have reported their seasonally-adjusted rates for July include New Hampshire, 3.0 percent; Vermont, 3.8 percent; Massachusetts, 3.9 percent; and Rhode Island, 5.5 percent. The adjusted national rate for July was 4.8 percent.

Maine's not-seasonally-adjusted unemployment rate was

Unemployment Rates, Seasonally Adjusted



3.9 percent in July, down from 4.6 percent in June and 4.0 percent in July 1996. The unadjusted national rate was 5.0 percent in July, down from 5.2 percent in June and 5.6 percent in July 1996. Not-seasonally-adjusted July unemployment rates for Maine counties ranged from 2.2 percent in Cumberland County to 8.1 percent in Washington County.

Not-seasonally-adjusted nonfarm wage and salary jobs fell by 8,600 from June to July due to normal temporary plant shutdowns in manufacturing industries and seasonal reductions in nonprofessional workers in local schools. Partially offsetting these temporary losses were seasonal



## Selected Regular Unemployment Compensation Program Indicators

Key Data	Jul 1997	Jun 1997	Jul 1996
Average Duration	INA	INA	13.9
Average Weekly Benefit Amount*	\$143.68	\$146.35	\$165.03
Exhaustees	1,727	INA	1,147

\* For totally unemployed claimants, excluding dependency allowances.

### Weekly Initial Claims

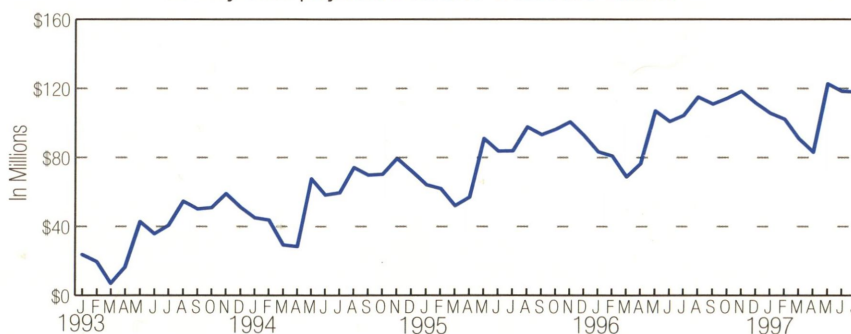
Week	8/9	8/2	7/26	7/19	7/12	7/5	6/28
1997	1,056	1,253	1,263	1,143	1,190	957	1,090
Week	8/10	8/3	7/27	7/20	7/13	7/6	6/29
1996	1,620	1,416	1,903	2,821	2,027	1,192	1,648

### Continued Claims Less Partial\*

Jul 1997	Jun 1997	Jul 1996
8,519	8,486	11,156

\* For the week including the 12<sup>th</sup> of the month.

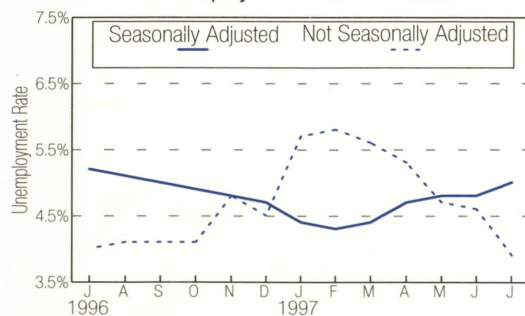
Monthly Unemployment Insurance Trust Fund Balance



gains by lodging services and eating and drinking places.

Over the year, not-seasonally-adjusted nonfarm wage and salary employment increased by 10,700. Services rose by 5,900, with most of the gains in business services and social services. Retail trade rose by 1,600, mainly in eating and drinking places and miscellaneous retail stores. Construction and wholesale trade each added 1,200 jobs. Finance, insurance, and real estate increased by 800. Industries recording job losses included transportation equipment manufacturing, apparel, and state government.

Unemployment Rates for Maine

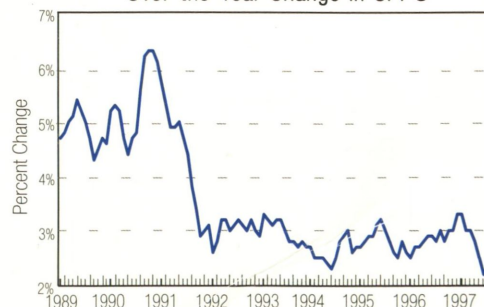


## U.S. Consumer Price Index for all urban consumers (CPI-U)

Item	Jul 97	Jun 97	Jul 96	Dec 96
(1982-1984 = 100) All Items	160.5	160.3	157.0	158.6

Percent Change from Prior Month	+0.1%
Percent Change from 12 Months Ago	+2.2%
Percent change from Last December	+1.2%

Over-the-Year Change in CPI-U





## Nonfarm Wage and Salary Employment, Not Seasonally Adjusted (in thousands)

INDUSTRY	MAINE			PORTLAND MSA			LEWISTON-AUBURN MSA		
	Jul 97	Jun 97	Jul 96	Jul 97	Jun 97	Jul 96	Jul 97	Jun 97	Jul 96
<b>Nonfarm Wage and Salary Employment<sup>1</sup></b>	<b>553.3</b>	<b>561.9</b>	<b>542.6</b>	<b>138.7</b>	<b>139.1</b>	<b>137.1</b>	<b>40.4</b>	<b>41.2</b>	<b>39.3</b>
<b>Goods Producing</b>	<b>112.0</b>	<b>114.1</b>	<b>111.1</b>	<b>21.5</b>	<b>21.4</b>	<b>20.6</b>	<b>9.8</b>	<b>9.8</b>	<b>9.2</b>
<b>Mining</b>	<b>0.1</b>	<b>0.1</b>	<b>0.1</b>	*	*	*	*	*	*
<b>Construction</b>	<b>26.3</b>	<b>25.6</b>	<b>25.1</b>	<b>6.7</b>	<b>6.6</b>	<b>6.3</b>	<b>1.9</b>	<b>1.7</b>	<b>1.7</b>
Building Construction	6.4	6.1	5.8	1.3	1.3	1.1	*	*	*
Heavy Construction	4.6	4.7	4.8	*	*	*	*	*	*
Special Trade Contractors	15.3	14.8	14.5	4.6	4.6	4.6	*	*	*
<b>Manufacturing</b>	<b>85.6</b>	<b>88.4</b>	<b>85.9</b>	<b>14.8</b>	<b>14.8</b>	<b>14.3</b>	<b>7.9</b>	<b>8.1</b>	<b>7.5</b>
<b>Durable Goods</b>	<b>40.3</b>	<b>40.8</b>	<b>41.1</b>	<b>7.0</b>	<b>6.9</b>	<b>6.8</b>	<b>2.3</b>	<b>2.3</b>	<b>2.2</b>
Lumber and Wood Products	10.5	10.3	10.1	*	*	*	*	*	*
Primary and Fabricated Metals	3.5	3.6	3.7	*	*	*	*	*	*
Industrial Machinery and Equipment	4.0	4.4	4.2	1.4	1.4	1.3	*	*	*
Electronic and Other Electrical Equipment	7.2	7.2	7.3	2.7	2.6	2.3	*	*	*
Transportation Equipment	10.6	10.7	11.3	*	*	*	*	*	*
Other Durable Goods	4.5	4.6	4.5	2.9	2.9	3.2	*	*	*
<b>Nondurable Goods</b>	<b>45.3</b>	<b>47.6</b>	<b>44.8</b>	<b>7.8</b>	<b>7.9</b>	<b>7.5</b>	<b>5.6</b>	<b>5.8</b>	<b>5.3</b>
Food and Kindred Products	6.9	6.5	6.4	2.1	2.1	2.0	*	*	*
Textile Mill Products	4.3	5.1	4.3	*	*	*	*	*	*
Apparel and Other Textile Products	1.5	1.8	2.1	*	*	*	*	*	*
Paper and Allied Products	14.8	15.0	14.7	*	*	*	*	*	*
Printing and Publishing	5.6	5.8	5.6	1.6	1.7	1.6	*	*	*
Rubber and Misc. Plastic Products	3.0	3.1	2.9	*	*	*	*	*	*
Leather and Leather Products	7.0	8.1	6.6	1.2	1.2	1.0	1.0	1.1	1.0
Other Nondurable Goods	2.2	2.2	2.2	2.9	2.9	2.9	4.6	4.7	4.3
<b>Service Producing</b>	<b>441.3</b>	<b>447.8</b>	<b>431.5</b>	<b>117.2</b>	<b>117.7</b>	<b>116.5</b>	<b>30.6</b>	<b>31.4</b>	<b>30.1</b>
<b>Transportation and Public Utilities</b>	<b>22.9</b>	<b>22.9</b>	<b>22.6</b>	<b>6.6</b>	<b>6.5</b>	<b>6.2</b>	<b>1.7</b>	<b>1.7</b>	<b>1.7</b>
<b>Wholesale Trade</b>	<b>27.1</b>	<b>27.2</b>	<b>25.9</b>	<b>9.9</b>	<b>10.0</b>	<b>9.8</b>	<b>2.2</b>	<b>2.2</b>	<b>2.1</b>
<b>Retail Trade</b>	<b>119.5</b>	<b>116.3</b>	<b>117.9</b>	<b>30.1</b>	<b>29.6</b>	<b>30.8</b>	<b>8.2</b>	<b>8.0</b>	<b>8.0</b>
General Merchandise Stores	12.0	12.0	11.7	*	*	*	*	*	*
Food Stores	21.0	20.7	20.8	*	*	*	*	*	*
Automotive Sales and Services	12.7	12.6	12.5	*	*	*	*	*	*
Eating and Drinking Places	41.8	39.8	41.3	8.5	8.5	9.5	*	*	*
Other Retail Trade	32.0	31.2	31.6	*	*	*	*	*	*
<b>Finance, Insurance, and Real Estate</b>	<b>27.8</b>	<b>27.6</b>	<b>27.0</b>	<b>12.3</b>	<b>12.3</b>	<b>12.3</b>	<b>2.1</b>	<b>2.1</b>	<b>2.0</b>
Banking	8.5	8.4	8.3	*	*	*	*	*	*
Insurance Carriers, Brokers and Agents	11.5	11.5	11.4	*	*	*	*	*	*
Other Finance, Insurance, and Real Estate	7.8	7.7	7.3	*	*	*	*	*	*
<b>Services</b>	<b>162.8</b>	<b>159.1</b>	<b>156.9</b>	<b>41.6</b>	<b>41.5</b>	<b>41.5</b>	<b>12.7</b>	<b>12.6</b>	<b>12.5</b>
Hotels and Other Lodging Places	14.8	12.3	14.6	*	*	*	*	*	*
Business Services	20.7	20.3	18.1	*	*	*	*	*	*
Health Services	51.8	51.9	51.6	*	*	*	*	*	*
Educational Services	11.8	11.9	11.8	*	*	*	*	*	*
Social Services	19.1	19.0	17.0	*	*	*	*	*	*
Other Services	44.6	43.7	43.8	*	*	*	*	*	*
<b>Government</b>	<b>81.2</b>	<b>94.7</b>	<b>81.2</b>	<b>16.7</b>	<b>17.8</b>	<b>15.9</b>	<b>3.7</b>	<b>4.8</b>	<b>3.8</b>
Federal	13.0	13.0	13.1	2.2	2.2	2.2	0.3	0.3	0.3
State	22.9	23.0	23.4	4.0	4.0	3.8	0.6	0.6	0.6
Local <sup>2</sup>	45.3	58.7	44.7	10.5	11.6	9.9	2.8	3.9	2.9

<sup>1</sup> Nonfarm wage and salary employment estimates include all full- and part-time wage and salary workers who worked during or received pay for the pay period which includes the 12th of the month. Domestic workers in private households, proprietors, the self-employed, and unpaid family workers are excluded. Estimates measure the number of jobs by industry. Current month's estimates are preliminary; prior month and year-ago estimates are revised. These estimates are benchmarked to March 1995. As a measure of reliability, the March 1995 benchmark revision for total nonfarm wage and salary employment was .04 percent lower than the original sample-based estimate.

<sup>2</sup> Regular teachers are included in summer months whether or not specifically paid in those months.

\* Where an employment estimate is not entered, either the data is not available in sufficient detail for publication or is nondisclosable by law.

Source: See page 2.



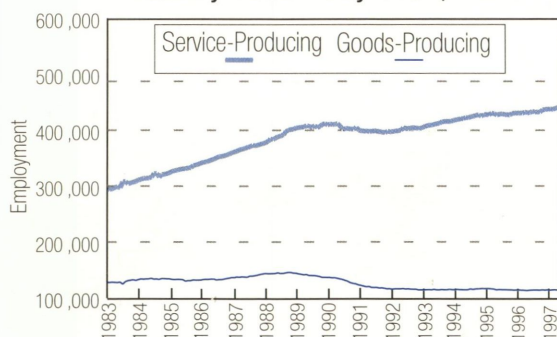
## Earnings and Hours of Production Workers in Manufacturing Industries<sup>1</sup> Not Seasonally Adjusted

AREA AND INDUSTRY	AVERAGE WEEKLY EARNINGS			AVERAGE WEEKLY HOURS			AVERAGE HOURLY EARNINGS			ANNUAL AVERAGE HOURLY EARNINGS		
	Jul 97	Jun 97	Jul 96	Jul 97	Jun 97	Jul 96	Jul 97	Jun 97	Jul 96	1996	1995	1994
<b>STATEWIDE</b>												
<b>Manufacturing</b>	<b>\$522.85</b>	<b>\$527.54</b>	<b>\$504.26</b>	<b>39.7</b>	<b>40.8</b>	<b>38.7</b>	<b>\$13.17</b>	<b>\$12.93</b>	<b>\$13.03</b>	<b>\$12.71</b>	<b>\$12.42</b>	<b>\$11.88</b>
<b>Durable Goods</b>	<b>498.62</b>	<b>504.11</b>	<b>482.11</b>	<b>39.2</b>	<b>40.2</b>	<b>38.6</b>	<b>12.72</b>	<b>12.54</b>	<b>12.49</b>	<b>12.23</b>	<b>12.22</b>	<b>11.80</b>
Lumber and Wood Products	432.48	428.57	427.03	42.4	42.9	41.5	10.20	9.99	10.29	10.10	9.80	9.46
Primary and Fabricated Metals	432.80	455.06	415.90	40.6	40.2	37.2	10.66	11.32	11.18	11.31	11.07	11.04
Industrial Machinery and Equipment	622.11	627.71	615.73	44.5	43.5	43.7	13.98	14.43	14.09	14.17	13.67	13.88
Electronic and Other Electric Equipment	380.48	381.58	359.16	32.8	34.1	31.7	11.60	11.19	11.33	10.94	10.76	10.72
Transportation Equipment	655.23	659.09	612.80	37.7	39.8	38.3	17.38	16.56	16.00	15.49	16.43	15.17
Other Durable Goods	410.74	427.03	406.22	39.8	41.5	40.3	10.32	10.29	10.08	10.08	9.67	9.34
<b>Nondurable Goods</b>	<b>544.56</b>	<b>549.38</b>	<b>525.35</b>	<b>40.1</b>	<b>41.4</b>	<b>38.8</b>	<b>13.58</b>	<b>13.27</b>	<b>13.54</b>	<b>13.17</b>	<b>12.61</b>	<b>11.95</b>
Food and Kindred Products	372.10	366.91	344.08	37.7	38.3	33.7	9.87	9.58	10.21	10.00	9.75	9.54
Textile Mill Products	451.26	449.19	423.50	43.6	46.5	40.8	10.35	9.66	10.38	10.27	10.17	9.38
Apparel and Other Textile Products	278.60	356.82	287.05	32.7	37.6	33.3	8.52	9.49	8.62	9.00	8.32	8.08
Paper and Allied Products	820.37	845.22	808.32	42.2	43.3	42.1	19.44	19.52	19.20	18.84	18.22	17.03
Leather and Leather Products	318.06	357.35	315.72	37.2	40.7	37.1	8.55	8.78	8.51	8.71	8.54	8.30
Other Nondurable Goods	463.51	447.35	429.31	40.2	38.9	38.4	11.53	11.50	11.18	11.20	10.88	10.62
<b>PORTLAND MSA</b>												
<b>Manufacturing</b>	<b>406.57</b>	<b>407.73</b>	<b>412.51</b>	<b>37.3</b>	<b>37.1</b>	<b>36.7</b>	<b>10.90</b>	<b>10.99</b>	<b>11.24</b>	<b>11.22</b>	<b>11.02</b>	<b>10.78</b>
<b>LEWISTON-AUBURN MSA</b>												
<b>Manufacturing</b>	<b>477.85</b>	<b>459.62</b>	<b>449.34</b>	<b>42.4</b>	<b>42.4</b>	<b>39.8</b>	<b>11.27</b>	<b>10.84</b>	<b>11.29</b>	<b>11.13</b>	<b>10.11</b>	<b>9.76</b>

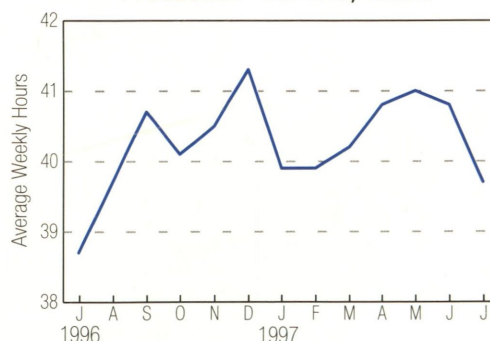
<sup>1</sup> Hours worked and earnings data are computed based on payroll figures for the week including the 12th of the month for manufacturing production workers. Average hourly earnings are calculated on a gross basis, and include such factors as premium pay for overtime and shift differential, as well as changes in basic hourly and incentive rates of pay. Average weekly earnings are the product of weekly hours worked and hourly earnings.

Source: See page 2.

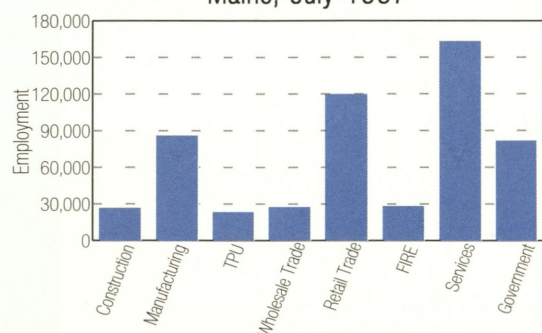
Nonfarm Employment by Sector  
January 1983 - July 1997, Maine<sup>1</sup>



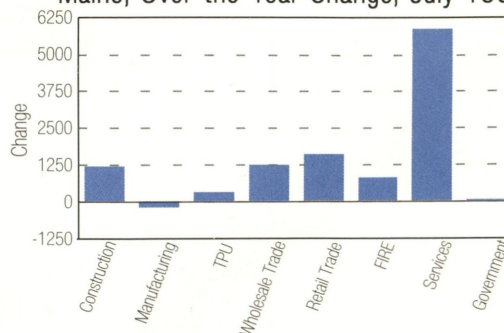
Hours Worked by Manufacturing  
Production Workers, Maine<sup>2</sup>



Nonfarm Employment by Industry Division  
Maine, July 1997<sup>2</sup>



Nonfarm Employment by Industry Division  
Maine, Over-the-Year Change, July 1997<sup>2</sup>



<sup>1</sup> Seasonally Adjusted. <sup>2</sup> Not Seasonally Adjusted.





## Personal Income for the United States, Maine, and Maine Counties

	Total Personal Income			Per Capita Personal Income				
	(in millions)			1993	1994	1995	Change 1994-1995	
	1993	1994	1995				Number	Percent
<b>United States</b>	<b>\$5,471,129</b>	<b>\$5,739,851</b>	<b>\$6,097,977</b>	<b>\$21,223</b>	<b>\$22,044</b>	<b>\$23,196</b>	<b>\$1,152</b>	<b>5.2</b>
<b>Maine</b>	<b>22,977</b>	<b>23,712</b>	<b>24,982</b>	<b>18,552</b>	<b>19,153</b>	<b>20,170</b>	<b>1,017</b>	<b>5.3</b>
Androscoggin	1,849	1,918	2,019	17,808	18,558	19,626	1,068	5.8
Aroostook	1,251	1,238	1,246	14,558	15,228	15,894	666	4.4
Cumberland	5,649	5,896	6,253	23,032	23,839	25,127	1,288	5.4
Franklin	472	479	500	16,057	16,207	16,981	774	4.8
Hancock	958	1,001	1,065	19,717	20,451	21,571	1,120	5.5
Kennebec	2,195	2,247	2,343	18,750	19,169	20,036	867	4.5
Knox	725	753	815	19,568	20,269	21,859	1,590	7.8
Lincoln	642	657	703	20,804	21,188	22,385	1,197	5.6
Oxford	820	846	892	15,522	15,959	16,727	768	4.8
Penobscot	2,518	2,601	2,728	17,228	17,777	18,747	970	5.5
Piscataquis	264	272	284	14,101	14,669	15,328	659	4.3
Sagadahoc	646	667	704	19,115	19,618	20,605	987	5.0
Somerset	758	778	814	14,887	15,176	15,825	659	4.5
Waldo	510	528	562	14,691	15,099	15,863	764	5.1
Washington	535	541	576	14,835	15,015	15,895	880	5.9
York	3,183	3,290	3,477	19,034	19,580	20,533	953	4.9

Total personal income is the income received by all persons from all sources, that is, from participation in production, from government and business transfer payments, and from government interest. Personal income is the sum of net earnings by place of residence, rental income of persons, personal dividend income, personal interest income, and transfer payments. Net earnings by place of residence is earnings by place of work—the sum of wage and salary disbursements (payrolls), other labor income, and proprietors' income—less personal contributions for social insurance, plus an adjustment for residence. Personal income is measured before the deduction of personal income taxes and other personal taxes.

Per capita personal income is personal income divided by the resident population as of July 1.

If you do **NOT** desire to continue receiving this publication, check here ☐ and return this cover to the address below.

If your address has changed, please indicate change and return this cover to the address below.

**Maine Department of Labor**  
**Labor Market Information Services**  
**20 Union Street**  
**Augusta, Maine 04330-6826**

**PRESORTED FIRST CLASS MAIL**  
**POSTAGE PAID**  
**US DEPT. OF LABOR**  
**PERMIT NO. G-12**