

November 2015

# Albert Willard Smith Correspondence

Albert Willard Smith

Maine State Library

Follow this and additional works at: [http://digitalmaine.com/maine\\_writers\\_correspondence](http://digitalmaine.com/maine_writers_correspondence)

---

## Recommended Citation

Smith, Albert Willard and Maine State Library, "Albert Willard Smith Correspondence" (2015). *Maine Writers Correspondence*. 535.  
[http://digitalmaine.com/maine\\_writers\\_correspondence/535](http://digitalmaine.com/maine_writers_correspondence/535)

This Text is brought to you for free and open access by the Maine State Library Special Collections at Maine State Documents. It has been accepted for inclusion in Maine Writers Correspondence by an authorized administrator of Maine State Documents. For more information, please contact [statedocs@maine.gov](mailto:statedocs@maine.gov).

SMITH, Albert Willard

# Albert W. Smith's Work To Be Produced By 'Players'

JAN 18 1936

## Mary Tudor Now In Rehearsal; Adaptation Of Hugo Classic

For the first time in their history the Portland Players, in their coming presentation of Mary Tudor, are producing the work of one of the members of their organization, Albert Willard Smith. This play, now going through rehearsals for presentation Jan. 30 and 31, and Feb. 1 by the Players, is adaptation from Victor Hugo's Mary Tudor.

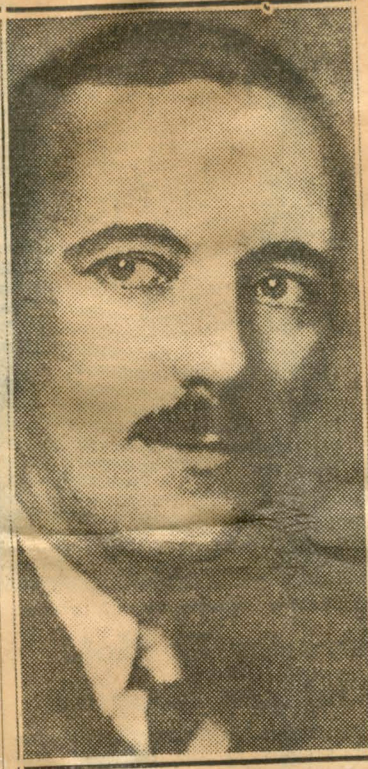
More than a year of constant work was required by Mr. Smith to modernize this play to meet the demands of modern audiences for faster action. The plot itself is history and in his version Mr. Smith, of course, has adhered strictly to the facts as they were during Mary Tudor's five year reign of England. His work has been primarily concerned with the cutting out of long tiring passages, rewriting his own interpretation for their parts, quickening the tempo, devising sets and creating individual character action throughout the work.

But in doing this Mr. Smith was a stickler for correctness of detail and lot—never losing the mood of the times from which the story comes, the Sixteenth Century. To maintain this mood the author had to be thoroughly schooled in the period, which required on Mr. Smith's part a tremendous amount of research. History, biography and interpretations of many other authors were studied.

Mary Tudor was the daughter of King Henry the Eighth and Katherine of Arragon, first wife of Henry the Eighth. She was proclaimed and crowned Queen of England in 1553. Her entire reign, short and stormy, was marked with much intrigue and dissension as was common in that transitory period.

As a setting for the play Mr. Smith has worked out three basic scenes, first, a bridge overlooking the Thames; second, a chamber in the Queen's Palace and the third is a corridor in the Tower of London. In all, there will be 29 people in the cast—15 of them being speaking parts.

Mr. Smith is the professional director of the Players, and has been with them in this capacity since 1932, directing four plays in that year, four plays in 1933, four in 1934 and three in 1935. His first production of this year was Petticoat Fever.



Albert W. Smith

Eastland Hotel  
February 3, 1936.

Miss Hilda McLeod  
Secretary, Maine State Library  
Augusta, Maine

My dear Miss McLeod:

Thank you for your interest in MARY TUDOR which the Portland Players presented last week. As far as I know, the play will not be published as it is merely an adaptation of the VICTOR HUGO PLAY of the same name. I imagine that you will not be interested in that sort of material but if there is anything that I can do to give you more detailed information, do not hesitate to get in touch with me.

Cordially yours,

*Albert Willard Smith*

Albert Willard Smith

AWS/e