

10-23-1968

Fifty-Fifth Annual Report of the Maine Highway Commission, 1968

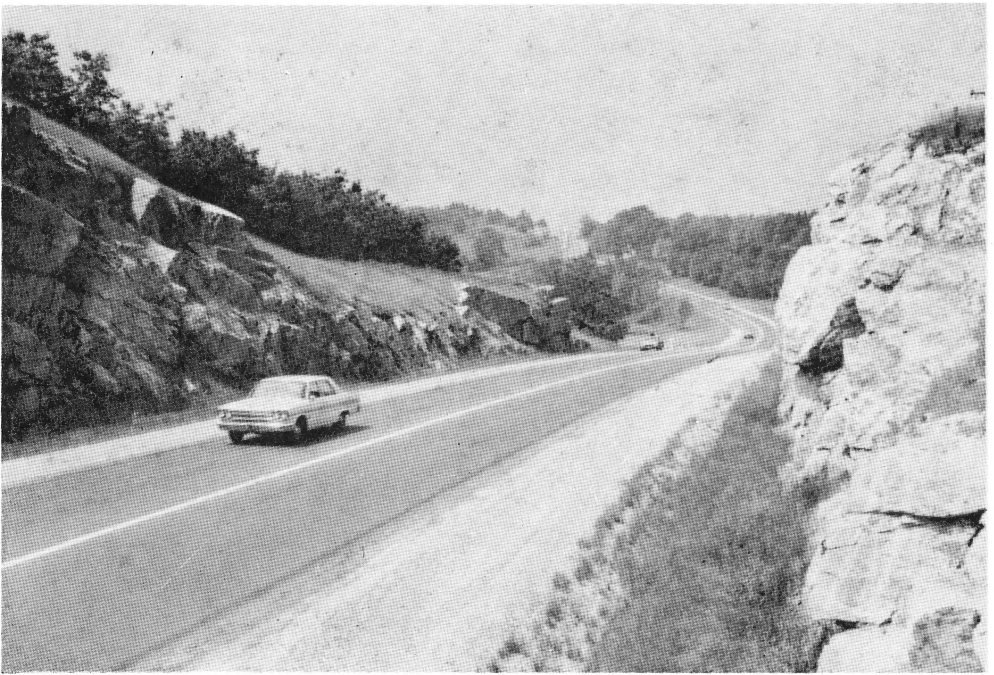
Maine State Highway Commission

Follow this and additional works at: https://digitalmaine.com/mdot_docs

Recommended Citation

Maine State Highway Commission, "Fifty-Fifth Annual Report of the Maine Highway Commission, 1968" (1968). *Transportation Documents*. 3518.
https://digitalmaine.com/mdot_docs/3518

This Text is brought to you for free and open access by the Transportation at Digital Maine. It has been accepted for inclusion in Transportation Documents by an authorized administrator of Digital Maine. For more information, please contact statedocs@maine.gov, adam.fisher@maine.gov.



Fifty-Fifth

**REPORT
1968**

MAINE STATE HIGHWAY COMMISSION

FIFTY-FIFTH ANNUAL REPORT



STATE HIGHWAY
COMMISSION

	Page
Bridge Division	
Construction	30
Toll Bridges	30
Railroad Grade Crossings	34
Maintenance	36
Maintenance Division	37
Winter Maintenance	37
Planning and Traffic Division	39
Safety and Workmen's Compensation	42
Outdoor Advertising	43
Rest Areas	43
Motor Transport Division	44
Project Expenditures	45
Maintenance	
Mileage by County and Surface Type	58
Expenditures by County and System	59
Expenditures by Function	60
Surplus	61
Income	62
Balance Sheet - Highway Fund	63
Bridges - Balance Sheet	64
Toll Bridge Revenues and Expenditures	65
Motor Transport Operations	66
Summary of Allocations	67

COMMISSIONERS
DAVID H. STEVENS CHAIRMAN
BERTRAND A. LACHARITE
STEVEN D. SHAW
BYLVESTER L. POOR
CHIEF ENGINEER



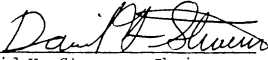
Maine State Highway Commission

AUGUSTA, MAINE 04330

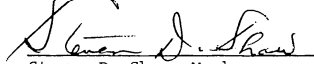
To His Excellency the Governor
and the Honorable Council:

We have the honor to present the fifty-fifth report of the
State Highway Commission, for the period July 1, 1967 to June
30, 1968, in accordance with Title 23, Section 51, M.R.S.A.
1964.

Respectfully submitted,


David H. Stevens, Chairman


Bertrand A. Lacharite, Member


Steven D. Shaw, Member

Augusta, Maine
October 23, 1968

ADMINISTRATIVE PERSONNEL

Maine State Highway Commission

DAVID H. STEVENS, <i>Chairman</i>	Hallowell
BERTRAND A. LACHARITE, <i>Member</i>	Brunswick
STEVEN D. SHAW, <i>Member</i>	Bingham
SYLVESTER L. POOR	<i>Chief Engineer</i>
RICHARD A. LUETTICH	<i>Deputy Chief Engineer</i>
NORMAN L. JOSE	<i>Acting Bridge Engineer</i>
CLARENCE L. PARTRIDGE	<i>Bridge Design Engineer</i>
WALTER B. HAMILTON	<i>Asst. Bridge Design Engineer</i>
ROBERT A. SHAILER	<i>Bridge Construction Engineer</i>
ABEL R. SIROIS	<i>Bridge Maintenance Engineer</i>
WILLIAM D. HARRIS	<i>Highway Design Engineer</i>
RICHARD A. COLEMAN	<i>Highway Location Engineer</i>
JOHN K. BUTTS	<i>Proj. Evaluation & Specs. Engr.</i>
RALPH A. STEVENS	<i>Engineer of Federal Aid & State Highways</i>
DEWEY C. GRAY, JR.	<i>Highway Construction Engineer</i>
LEROY H. MACCORMACK	<i>Assistant Highway Engineer</i>
CLARENCE E. HART	<i>Right of Way Engineer</i>
GEORGE E. KIRK	<i>Assistant Right of Way Engineer</i>
CARL A. BROOKS	<i>Utility Engineer</i>
MARTIN C. RISSEL	<i>Maintenance & State Aid Engineer</i>
ROBERT H. ELLIS	<i>Assistant Maintenance Engineer</i>
ROGER L. MALLAR	<i>Planning & Traffic Engineer</i>
GEDEON G. PICHER	<i>Assistant Planning Engineer</i>
ALBERT L. GODFREY, SR.	<i>Assistant Traffic Engineer</i>
GUY E. NICHOLAS	<i>Director, Division of Special Services</i>
W. GORDON HUNTER	<i>Landscape Architect</i>
FREDERICK M. BOYCE, JR.	<i>Materials & Research Engineer</i>
WALTER B. LOVETT	<i>Pavement Engineer</i>
EDWARD I. ALBLING	<i>Director, Division of Accounts & Administration</i>
DAVID A. FRASER	<i>Asst. Director, Div. of Accounts & Administration</i>
RAYMOND F. VIGUE	<i>Manager, Motor Transport Division</i>
PHILIP M. YOUNG	<i>Radio Supervisor</i>
GEORGE L. SMITH	<i>Personnel Officer</i>
ASA C. RICHARDSON	<i>Chief Counsel</i>
MELVIN MORGAN	<i>Soils Engineer</i>
WILBUR J. DUNPHY, JR.	<i>Research Engineer</i>
HORACE A. PRATT	<i>Testing Engineer</i>
VAUGHN D. KNIGHT	<i>Division Engineer, Presque Isle</i>
PAGE JOHNSON	<i>Division Engineer, Ellsworth</i>
RALPH M. DUNBAR	<i>Division Engineer, Bangor</i>
NORMAN L. LEVESQUE	<i>Division Engineer, Waterville</i>
J. HENRY FOLEY	<i>Division Engineer, Rockland</i>
MERTON F. BRACKETT	<i>Division Engineer, Portland</i>
ERVIN E. MAYNARD	<i>Division Engineer, Rumford</i>

FEDERAL FUNDS

The Federal Government, through the Bureau of Public Roads, has approved certain highways in the State as the Primary Highway System, Secondary Highway System, Urban Road System, and Interstate Highway System. Federal funds are available to share in the cost of construction and reconstruction of these highways.

Fifty percent of the expenditures on the Primary, Secondary or Urban Systems, on projects approved by the Bureau of Public Roads, will be reimbursed by the Federal Government. Ninety percent of the cost of projects on the Interstate System, approved by the Bureau of Public Roads, will be reimbursed by the Federal Government. The theoretical matching is not realized because of non-matching items included in the projects; however, it is the policy of the State Highway Commission to request participation in as many items as possible.

During fiscal year 1968, the State Highway Commission obligated \$18,776,732 of Federal funds compared to \$16,518,471 for the previous fiscal year. In January, 1968, the Bureau of Public Roads curtailed the amount of Federal funds that could be obligated.

Federal Funds Apportioned to Maine

Fiscal Year	Primary	Secondary	Urban	Interstate	Total
1946	\$1,948,954	\$1,404,017	\$ 560,538		\$ 3,913,509
1947	1,948,844	1,403,942	560,538		3,913,324
1948	1,924,224	1,386,183	553,352		3,863,759
1949	0	0	0		0
1950	1,721,234	1,240,539	498,017		3,459,790
1951	1,717,684	1,238,176	498,017		3,453,877
1952	1,887,806	1,349,802	509,899		3,747,507
1953	1,864,396	1,333,474	505,956		3,703,826
1954	2,061,148	1,474,586	560,854	\$ 210,101	4,306,689
1955	2,065,955	1,478,426	563,746	210,595	4,318,722
1956	2,649,624	1,896,107	723,013	1,387,518	6,656,262
1957	2,657,051	1,901,353	724,853	1,391,238	6,674,495
1957 (Supp)	465,906	334,070	131,369	8,042,145	8,973,490
1958	3,168,163	2,271,676	893,309	13,671,647	20,004,795
1959	3,239,093	2,322,866	914,985	15,988,534	22,465,478
1959 ("D")	1,488,169	1,067,218	420,381	1,606,888	4,582,656
1960	3,342,634	2,396,608	941,127	12,785,750	19,466,119
1961	3,212,203	2,313,572	962,409	9,159,480	15,647,664*
1962	3,080,414	2,338,527	784,972	11,131,313	17,335,226*
1963	2,947,462	2,249,416	784,294	11,304,900	17,286,072
1964	3,143,060	2,387,259	804,820	12,246,975	18,582,114
1965	3,215,806	2,441,926	821,817	12,653,618	19,133,167
1966	3,296,316	2,504,663	850,524	13,189,050	19,840,553
1967	3,325,306	2,523,286	848,370	13,179,300	19,876,262
1968	3,323,509	2,523,309	851,816	14,997,196	21,695,830
1969	3,315,034	2,523,278	850,524	16,736,150	23,424,986
1970 (Est)	4,134,000	3,143,000	1,608,000**	26,763,000	35,648,000
1971 (Est)	4,134,000	3,143,000	1,608,000**	26,763,000	35,648,000

*\$459,000 each year to provide for repayment of "L" funds.

**Includes \$677,000 for "Topics" program.

Bond Retirement and Interest on Outstanding Bonds*

Date	Retirement	Interest	Total
1969	\$ 3,255,000	\$ 1,253,306	\$ 4,508,306
1970	3,255,000	1,158,144	4,413,144
1971	3,255,000	1,062,581	4,317,581
1972	3,155,000	968,369	4,123,369
1973	2,855,000	879,556	3,734,556
1974	2,855,000	794,569	3,649,569
1975	2,555,000	711,531	3,266,531
1976	1,905,000	642,182	2,547,182
1977	1,905,000	582,318	2,487,318
1978	1,905,000	522,382	2,427,382
1979	1,905,000	461,918	2,366,918
1980-85	12,765,000	1,519,050	14,284,050
	<u>\$41,570,000</u>	<u>\$10,555,906</u>	<u>\$52,125,906</u>

*Includes Jonesport-Beals Bridge Bonds

On October 15, 1968, \$9,600,000 Highway Bonds were issued.

HIGHWAY CLASSIFICATION AND MILEAGE

March 1, 1968

State System Mileage

	Total	Improved	Unimproved
State Highway	*3,858.82	3,849.54	9.28
State Aid	**7,628.01	6,959.90	668.11
Town Ways	9,370.97	7,615.64	1,755.33
Sub-Total	20,857.80	18,425.08	2,432.72
Reservation Roads	301.94	262.67	39.27
Turnpike	111.77	111.77	
Total	21,271.51	18,799.52	2,471.99

*Excludes 15.86 Miles of Designated State Highway on Projected Location.

**Excludes 2.60 Miles of Designated State Aid on Projected Location.

DESIGNATED FEDERAL SYSTEM MILEAGE

March 1, 1968

	State Highway	State Aid	Town Ways	Other	Total
Total Primary System	1,660.64				1,660.64
Primary Rural	1,504.90				1,504.90
Primary Urban	155.74				155.74
Total Interstate System	219.87			*92.18	312.05
Total Secondary System	1,724.75	778.77	7.42		2,510.94
Secondary Rural	1,684.62	735.87	4.20		2,424.69
Secondary Urban	40.13	42.90	3.22		86.25

*Includes 58.00 Miles on the Maine Turnpike and 34.18 Miles on Projected Location.

MILEAGE BY COUNTY AND BY ADMINISTRATIVE SYSTEM

March 1, 1968

County	S.H.	S.A.	T.W.	Reservation		Mileage Maintained		Totals
				Roads	Total (1)	S.H. (2)	By State S.A.	
Androscoggin	118	302	635	0	1,055	91	254	345
Aroostook	715	676	977	11	2,379	707	582	1,289
Cumberland	282	613	1,058	21	1,974	239	502	741
Franklin	197	298	409	6	910	194	275	469
Hancock	215	501	428	60	1,204	211	468	679
Kennebec	280	537	715	9	1,541	260	472	732
Knox	74	286	292	9	661	70	267	337
Lincoln	97	331	345	0	773	96	308	404
Oxford	251	513	829	13	1,606	244	463	707
Penobscot	454	892	848	28	2,222	428	801	1,229
Piscataquis	124	276	301	58	759	123	256	379
Sagadahoc	53	184	210	8	455	52	166	218
Somerset	286	541	595	1	1,423	281	483	764
Waldo	141	483	463	11	1,098	139	447	586
Washington	301	524	308	63	1,196	300	465	765
York	271	671	958	4	1,904	252	579	831
Totals	3,859	7,628	9,371	302	21,160	3,687	6,788	10,475

(1) Excludes 16 Miles of S.H. — 3 Miles of S.A. on Projected Location and 112 Miles on Turnpike.

(2) Excludes State Highway — including bridges, compact or unimproved not maintained by State Highway Commission, 216 miles.

MAINTENANCE MILEAGE BY DIVISIONS BY SURFACE TYPE Fiscal Year 1968

Division	S.H.	Surface		Mixed	Bitum.	Bitum.	Concrete	Totals	Grand Totals
		Gravel	Treat.	Bitum.	Macadam	Con-crete			
		Mileage	Mileage	Mileage	Mileage	Mileage	Mileage		
Presque Isle	S.H.		324.67	107.14	68.77	210.61		711.19	
Interchanges	95					5.08		5.08	
I	S.A.	33.59	583.25			0.51		617.35	1,333.52
Ellsworth	S.H.	1.25	286.60	54.19	41.64	125.76	7.03	516.47	
II	S.A.	21.65	899.29	13.08	2.37	2.23		938.62	1,455.09
Bangor	S.H.		157.68	68.32	34.22	261.28	1.38	522.88	
Interchanges	95					18.90		18.90	
III	S.A.	60.22	924.54	7.66	0.45	12.75		1,005.62	1,547.40
Fairfield	S.H.	5.12	147.06	87.84	64.02	218.12		522.16	
Interchanges	95					8.93		8.93	
IV	S.A.	69.98	833.42	24.20	17.30	20.57		965.47	1,496.56
Rockland	S.H.		133.05	34.10	46.07	133.26	2.61	349.09	
V	S.A.	63.40	1,052.00	27.99	3.85	18.18	1.71	1,167.13	1,516.22
Portland	S.H.		128.35	58.90	86.15	205.38	29.88	508.66	
Interchanges	95					4.85		4.85	
VI	S.A.		1,031.80	47.36	13.82	20.37	1.33	1,114.68	1,628.19
Rumford	S.H.		261.43	113.11	58.15	83.39	2.66	518.74	
VII	S.A.	20.93	930.05	16.48	5.85	2.59		979.03	1,497.77
TOTALS	S.H.	6.37	1,438.84	523.60	399.02	1,237.82	43.56	3,649.21	
	95					37.74		37.74	
	S.A.	269.77	6,254.35	136.77	43.64	77.20	6.17	6,787.90	
GRAND TOTALS		276.14	7,693.19	660.37	442.66	1,352.76	49.73	10,474.85	10,474.85

**PRIMARY, SECONDARY, AND URBAN PROJECT CONTRACTS AWARDED BY
STATE HIGHWAY COMMISSION DURING FISCAL YEAR 1968**

Project No.	Towns	Project Location	Mileage	Work Description	Award Date	Contractor	Contract Award Amount
L 26-1 (3)	Newcastle	U.S. Rte. 1 overlooking Sherman Lake	0.25	Construction of rest area — grading, paving, landscaping	7/12/67	C. F. Johnson & Son, Inc.	66,843.25
1-1 (20)	Scarborough	U.S. Rte. 1 west of Willowdale Road	0.644	Reconstruction and widening, median strip, storage lanes, jug handles	7/12/67	W. H. Hinman, Inc.	588,923.00
178 (504) & L 178 (1)	Grafton	Rte. 26 near Bear River	0.760	Reconstruction highway, several scenic turnouts, and parking areas	7/12/67	P. H. Chadbourne & Co.	124,320.75
926-2 (19)	Belfast	U.S. Rte. 1 between Rte. 52 & Rte. 3	0.832	Relocation northbound lanes to eliminate hazards, intersection U.S. 1, Main Street & Rte. 3	7/19/67	Bridge Construction Corp.	289,794.00
298 (7)	Harrington	U.S. Rte. 1 west of village	1.365	Reconstruction, relocation to eliminate hazardous curves and grades	7/19/67	Bridge Construction Corp.	299,355.00
153 (8)	Gardiner- West Gardiner	Rte. 126 vicinity Maine Turnpike	1.068	Modernization in anticipation of increased traffic when Interstate Brunswick - West Gardiner opened	7/26/67	H. E. Sargent, Inc.	414,937.40
332 (13)	Limestone	Rte. 165 north of town	1.553	Continues improvement—fills gap between two new sections	7/26/67	Hornbrook Inc.	143,875.00
112 (508)	Kennebunk	Rte. 9 near Wells town line ext. easterly	0.500	Reconstruction — eliminates humps and dips	8/ 2/67	Iafolla Construction Co., Inc.	107,692.00
21-1 (8)	Jay	Rte. 4 in vicinity new Androscoggin River Bridge	0.502	Widening, reconstruction and relocation to eliminate hazards	8/16/67	Thomas DiCenzo	264,559.50
285 (1)	Hermon	Coldbrook Rd. northwest of I-95	1.099	Reconstruction improved grade from interchange toward U.S. Rte. 2	8/16/67	Thomas DiCenzo	200,800.00
1-1 (22)	Scarborough	U.S. 1 connector from existing U.S. 1 extending north	1.069	Grading drainage and base for portion of U.S. 1 connector — box culvert bridge	9/ 6/67	H. E. Sargent, Inc.	502,940.85
330 (4)	Washburn- Woodland- Caribou	Rte. 164 west of built-up area of Caribou	0.871	Continues modernization from new section ext. westerly — eliminates hazards	9/13/67	Hornbrook Inc.	143,281.25
L 33-1 (2)	Moscow-Caratunk	U.S. Rte. 201 bordering Wyman Lake	9.845	Scenic enhancement, opening up scenic vistas east shore of lake	9/27/67	Victor Vigue	48,600.00
309 (501)	Weston	U.S. Rte. 1 near jct. Faulkner Rd.	1.193	Continues improvement from new highway ext. southerly, scenic overlook	9/27/67	Donald J. Guy, Inc.	159,716.80
56-1 (1)	Limestone	Rte. 89 west of town	0.455	Reconstruction, widening, eliminates steep grade	9/27/67	Bridge Construction Corp.	178,103.00
1-1 (514)	Kennebunk	U.S. Rte. 1 between Day St. and Water St.	0.282	Reconstruction — 48 feet and 42 feet between curbing	10/11/67	L.K. Ladd, Inc.	209,382.25

Project No.	Towns	Project Location	Mileage	Work Description	Award Date	Contractor	Contract Award Amount
331 (2)	Fort Fairfield	U.S. Rte. 1-A (High Street) three sections	1.820	Construction from Rte. 165 northwesterly—grading and paving	1/31/68	Hornbrook, Inc.	208,050.20
250 (7)	Sedgwick-Blue Hill	Rte. 172 vicinity of Carleton Stream	0.795	Reconstruction to eliminate hazardous curves and narrow bridge	3/13/68	Thomas DiCenzo	162,237.00
298 (6)	Hancock-Franklin	Rte. 182 east of jct. with U.S. 1	0.514	Elimination of hazardous dip and widening — box culvert type bridge	4/10/68	Harold MacQuinn, Inc.	195,547.50
100 (507)	York	U.S. Rte. 1-A between York Harbor and York Beach	0.881	Widening and paving scenic seaside highway	4/17/68	Bridge Construction Corp.	149,918.50
1-1 (20)	Scarborough	U.S. Rte. 1 — near Scarborough Downs	0.644	Traffic signal at five intersections new highway	4/17/68	Kerr Electric Co.	65,823.00
222 (3)	Knox	Rte. 220 from Thorndike town line southerly	0.815	Reconstruction to eliminate hazardous dip and curve—scenic turnout	5/ 8/68	F. Tranquillo & Co., Inc.	99,998.80
241 (10)	Parkman	Rte. 150 two sections beginning at Crow Hill Road	1.636	New construction and paving over previous grading project	5/ 8/68	Farrin Bros. & Smith, Inc.	148,340.00
8-1 (3)	Lebanon-Sanford	U.S. Rte. 202/Rte. 11 near town line	1.468	Reconstruction eliminates hazards — two box culvert bridges	5/15/68	H. E. Sargent, Inc.	358,365.20
54-1 (502)	Presque-Isle	Rte. 163/Rte. 167 northeast of city	0.656	Reconstruction, relocation — modernizes, eliminates narrow curve	5/15/68	Hornbrook, Inc.	107,755.00
915-1 (509)	Augusta	Intersection U.S. Rte. 202 and Whitten Road	—	Traffic signal system	5/22/68	R. W. LeBaron, Inc.	11,000.00
46-1 (6) & 760 (502)	Calais	U.S. Rte. 1 near new Milltown International Bridge	1.577	Reconstruction on U.S. 1 to fill gap, plus new approach to bridge	5/29/68	Thomas DiCenzo	577,319.00
210 (17)	China	U.S. Rte. 202/Rte. 9 east shore of China Lake	3.687	Continues reconstruction and paves previously graded section	5/29/68	Thomas DiCenzo	410,185.50
178 (1)	Upton	Rte. 26 near N.H. border	1.079	Continues improvement eliminates humps, dips and hazardous curves	6/ 5/68	Bridge Construction Corp.	197,799.00
237 (14)	New Portland	Rte. 27 northwest of village	1.044	Reconstruction from previous improvement along Carrabasset River	6/12/68	Thomas DiCenzo	170,946.40
40-1 (502)	Milo-Orneville	Rte. 6/Rte. 16 southeast of built-up area of Milo	0.688	Continues improvement — new location eliminates hazardous curves	6/20/68	Guy J. Thibodeau	94,894.00

**PROJECTS AUTHORIZED FROM STATE FUNDS
FISCAL YEAR 1968**

Project No.	Location	Route	Amount
8-1 (503)	Lebanon	U.S. 202	65,000.00
12-1 (507)	Gorham	25	10,000.00
14-1 (507)	Windham	U.S. 302	7,100.00
15-1 (508)	Lewiston	11-100-202	85,000.00
17-1 (505)	Oxford	26	35,000.00
17-1 (506)	Greenwood	26	15,000.00
17-1 (507)	Topsham-Lisbon-Lewiston	196	12,000.00
17-1 (508)	Topsham	U.S. 201	3,000.00
21-1 (506)	Jay	4	30,000.00
22-1 (501)	Livermore	108	2,500.00
26-1 (511)	Wiscasset-Edgecomb	U.S. 1	8,000.00
28-1 (501)	Liberty to Belfast	3	4,000.00
28-1 (502)	Belfast	3	1,000.00
30-1 (503)	Washington	17	20,000.00
30-1 (504)	Jefferson	17	15,000.00
30-1 (505)	Jefferson	17	2,500.00
32-1 (501)	Belgrade-Rome New Sharon	27	10,000.00
33-2 (503)	Sandy Bay-Dennistown- Moose River	U.S. 201	80,000.00
38-1 (504)	Kenduskeag	15	16,000.00
42-1 (506)	Bucksport-Verona	U.S. 1	20,000.00
42-1 (507)	Orrington	15	30,000.00
44-1 (510)	Harrington	U.S. 1A	2,500.00
50-3 (508)	Van Buren	U.S. 1	55,000.00
95-1 (501)	Kittery	Borings	2,000.00
95-7 (504)	Pittsfield	Steward Suit	21,000.00
95-7 (505)	Hampden	Screen Plantings	1,000.00
110 (502)	Shapleigh	11	10,000.00
115 (503)	Limington	11	10,000.00
133 (501)	Albany	5	50,000.00
143 (502)	Harpsswell	24	15,000.00
144 (501)	Phippsburg	209	1,000.00
144 (502)	Bath-Phippsburg	209	2,500.00
146 (502)	Georgetown	127	3,000.00
150 (502)	Durham	136	8,500.00
150 (503)	Auburn	136	7,000.00
153-9 (504)	Lewiston	126	150,000.00
159 (507)	Edgecomb	27	6,000.00
160 (501)	South Bristol	129	1,000.00
169 (501)	Buckfield	117	30,000.00
178 (505)	Newry	26	2,000.00
194 (501)	St. George	131	8,000.00
217 (504)	Knox	137	53,000.00
223 (503)	Newport	Unnumbered	15,000.00
230 (503)	Embden	U.S. 201A	3,000.00

PROJECTS COMPLETED DURING FISCAL YEAR 1968

Project No.	Location	Route	Cost	Mileage	Type
135 (4)	Poland, Mechanic Fall	11 & 36	\$ 244,450.60	.73	Bit. Conc.
150 (501)	Durham	136	2,527.49		P.E.
150 (502)	Durham	136	8,438.83	.10	Improve
150 (503)	Auburn	136	12,366.10	.12	Improve
50-3(506)	Frenchville	U.S. 1	7,278.22		P.E.
95-9(4)	Dyer Brook, Houlton	Interstate	895,114.44		P.E. & R.W.
95-9(32)	T1 R6, Benedicta	Interstate	1,586,718.83	5.18	Gravel
95-9(33)	Benedicta, Sherman	Interstate	1,683,515.38	4.34	Gravel
95-9(34)	Sherman	Interstate	2,725,034.79	2.29	Bit. Conc.
95-9(35)	Crystal, Island Falls	Interstate	1,656,577.40	4.07	Bit. Conc.
95-9(36)	Island Falls	Interstate	1,467,686.29	1.82	Gravel
95-9(37)	Island Falls, Dyer Br.	Interstate	990,341.49	4.16	Gravel
95-9(39)	Benedicta, T2R6	Interstate	303,825.20	.00	Bridge
95-9(41)	Crystal, Sherman	Interstate	371,935.40	.00	Bridge
95-9(42)	Island Falls	Interstate	202,611.61	.00	Bridge
95-9(43)	Island Falls	Interstate	656,784.22	.32	Bridge
95-9(46)	Island Falls, Oakfield	Interstate	1,454,962.95	11.44	Bit. Conc.
95-9(47)	Sherman, Crystal	Interstate	1,679,562.58	4.79	Bit. Conc.
320 (3)	Sherman	158	75,214.69	.28	Bit. Conc.
331 (502)	Caribou	U.S.1 A	20,704.03	.50	Improve
338 (502)	Fort Kent	161	151,318.76	.27	Bit. Conc.
775 (502)	Presque Isle	210	225,576.57	1.03	Bit. Conc.
12-1(507)	Gorham	25	807.50		P.E.
14-1(505)	Bridgton	U.S. 302	105,149.95	6.20	Improve
16-1(502)	New Glouc., Poland	100	58,064.94		P.E.
26-1(31)	Brunswick, Bath	U.S. 1	174,017.96	7.96	Signing
26-1(32)	Brunswick	U.S. 1	6,620.92	1.70	Guardrail
95-4(17)	Brunswick	Interstate	199,568.21		P.E. & R.W.
95-4(20)	Falmouth, Brunswick	Interstate	61,746.26	17.80	Guardrail
95-5(4)	Brunswick, Topsham	Interstate	6,888.87		P.E.
119 (503)	Gray	115	56,005.41	.70	Improve
120 (505)	Scarborough	114	45,387.48	.80	S. I. G.
136 (1)	Casco	121	456,570.56	1.71	Bit. Conc.
L136 (1)	Casco	121	14,369.38	.24	Scenic
142 (501)	Harpswell	123	177,760.04	.56	Bit. Conc.
L143 (1)	Harpswell	24	4,286.54	.39	Landscape
143 (3)	Harpswell	24	398,601.85	1.23	Bit. Conc.
143 (501)	Harpswell	24	18,747.11	.20	Improve
295-3(16)	Portland, Falmouth	Interstate	26,648.26	4.60	Guardrail
295-3(20)	So. Portland, Portland	Interstate	693,899.15	.00	Soil test
295-3(29)	Portland	Interstate	1,014,027.77		R.W.
703-9(501)	South Portland	Exit 7	35,553.45	1.20	Mix. Bit.
237 (12)	Eustis	27	174,320.93	.80	Bit. Conc.
L 42-1(1)	Ellsworth	3	10,526.12	2.75	Landscape
42-1(4)	Ellsworth	U.S. 1A	543,463.05	2.75	Bit. Conc.
L 44-1(1)	Gouldsboro	U.S. 1	4,071.85	.17	Scenic
44-1(8)	Gouldsboro	U.S. 1	455,595.11	1.85	Bit. Conc.
294 (502)	Gouldsboro	186	199,495.33	.98	Bit. Conc.
15-1(507)	Winthrop	100	9,161.13	.32	Improve
L 28-1(1)	China & Palermo	3	13,536.04	2.91	Rest Area
28-1(3)	China, Palermo	3	836,651.48	2.91	Bit. Conc.
95-6(37)	Augusta, Fairfield	Interstate	133,698.41	24.90	Guardrail
95-7(59)	Fairfield, Bangor	Interstate	151,200.17	50.50	Guardrail
163 (503)	Pittston, Randolph	27	46,339.36	3.69	Improve
231-9(502)	Waterville	104	1,753.25	.01	Improve
30-1(502)	Union	17	246,271.41	1.03	Bit. Conc.
196 (501)	South Thomaston	73	25,860.85		P.E. & R.W.

STATE AID DIVISION

The legislative allocation of \$2,325,000 was apportioned to 538 municipalities, as follows:

No. of Units Approp. by Town	No. of Towns	Towns Approp.	State Apportionment	State Bonus	Total
1 Unit or Less	25	\$ 11,556	\$ 26,652	\$ —	\$ 38,208
1-2 Units	8	22,482	24,014	—	46,496
2 Units	307	533,980	802,123	80,647	1,416,750
4 Units	198	481,960	888,704	274,133	1,644,797
Indian Twp.	—	—	1,500	—	1,500
Supervision	—	—	227,227	—	227,227
Total	538	\$1,049,978	\$1,970,220	\$354,780	\$3,374,978

Total disbursement amounted to \$2,336,561 representing a decrease of \$118,328 over the previous fiscal year. This decrease is reflected in the larger balance forward of \$2,813,626. Included in the disbursement of \$2,336,561 is the payment of \$128,820 for work performed in prior years and requested as anticipations.

Revenues amounted to \$1,156,326 which was the town share of the costs of construction. The towns made a direct contribution of \$824,049. The amount of \$332,277 was expended directly by the town. The trend continues for towns to request the State Highway Department to finance and supervise directly State Aid projects, creating a demand for temporary summer employment. It is believed that local highway departments should be organized to assume this responsibility.

The transfers of State Aid funds to Town Road Improvement, Special State Aid, and Bridge Construction continue at a high level. \$723,478 was transferred for these purposes in 1968. Transfers were requested by municipalities from the Registration Refund account of \$7,036, and from the Town Road Improvement account of \$83,107, resulting in a net transfer from State Aid accounts of \$633,335.

TOWN ROAD IMPROVEMENT

Legislative allocation of \$1,500,000 was apportioned to 583 towns on the basis of 83.96 miles reflecting an increase of 6 towns and 3 miles compared to previous fiscal year. Apportionment of funds was made on the basis of \$159 per mile.

Balances carried from previous fiscal year amounted to \$708,673. With the legislative allocation of \$1,500,000 and town funds of \$639 and a decrease of \$2,089 in prior years' revenues, a total of \$2,207,223 was available for expenditure. The towns requested transfers of \$97,501 to state aid and special state aid accounts while \$40,148 was transferred from the state aid account leaving a balance available of \$2,149,870. Expenditures amounted to \$1,431,870 leaving a balance to be carried to the next fiscal year of \$717,999.

County	Paid by State	Paid by Towns	Total Cost
Androscoggin	\$ 66,402	\$ 761	\$ 67,163
Aroostook	157,246	21,345	178,592
Cumberland	119,639	3,231	122,870
Franklin	82,755	4,143	86,897
Hancock	60,973	3,335	64,308
Kennebec	88,482	18,455	106,937
Knox	43,191	1,786	44,977
Lincoln	53,541	5,877	59,418
Oxford	131,407	4,864	136,270
Penobscot	117,805	9,364	127,168
Piscataquis	50,652	6,505	57,157
Sagadahoc	34,781	6,276	41,057
Somerset	97,147	23,988	121,134
Waldo	76,230	4,470	80,700
Washington	47,742	1,562	49,304
York	155,870	4,647	160,517
TOTALS	\$1,383,863	\$120,609	\$1,504,469
Reimb. to towns on prior work	2,638	—	2,638
	<u>\$1,386,501</u>	<u>\$120,609</u>	<u>\$1,507,107</u>
Supervision	45,371		
	<u>\$1,431,872</u>		

SPECIAL STATE AID

The State Highway Commission authorized 71 projects over improved sections and 21 projects on unimproved sections of State Aid Highways not on a Federal system. \$1,431,870 was disbursed during the fiscal year, and \$542,267 was carried forward to complete projects previously authorized.

Expenditures by county are, as follows:

Androscoggin	\$ 48,634
Aroostook	79,392
Cumberland	26,211
Franklin	55,219
Hancock	120,050
Kennebec	146,494
Knox	45,036
Lincoln	23,365
Oxford	62,430
Penobscot	246,915
Piscataquis	68,758
Sagadahoc	24,796
Somerset	76,042
Waldo	78,261
Washington	115,518
York	65,364
Supervision	12,740
	<hr/>
	\$1,295,225

TOLL COLLECTIONS
July 1, 1967 to October 6, 1967

Single Fares:			
2 axles, single rear tires	144,504	\$0.10	\$ 14,450.40
2 axles, dual rear tires	2,813	0.15	421.95
3 or more axles	11,732	0.20	2,346.40
Strip Tickets — 10 trips:			
2 axles, single rear tires	95,172	0.25	23,793.00
2 axles, dual rear tires	2,239	0.50	1,119.50
3 or more axles	1,335	1.00	1,335.00
			\$ 43,466.25

JOSHUA L. CHAMBERLAIN BRIDGE
Bangor-Brewer

On July 1, 1967, the balance in the operating account was \$111,-524.45. Total ticket sales and tolls collected amounted to \$182,789.45; overages were \$83.85. Previous years receipts deposited were \$2,107.35 and receipts collected but not credited as of June 30th were \$3,842.55, making gross receipts from tolls \$181,138.10. Interest earned on investments was \$2,603.26.

The cost of maintenance and operation was \$85,738.02, divided as follows: Toll salaries, \$69,941.87; toll collectors retirement, \$5,327.00; fidelity bonds, \$18.84; toll house heat and utilities, \$1,216.88; insurance on buildings and equipment, \$140.00; supplies and equipment repairs, \$2,038.75; maintenance, including snow plowing and street lighting, \$7,054.68.

Interest payments on bonds was \$31,875.00, repayment to the Highway Fund \$40,000.00, and bond retirement, \$50,000.00. The balance on June 30, 1968 was \$87,652.79.

At the end of the fiscal, bonds outstanding amounted to \$1,850,000, and the liability to the General Highway Fund was \$185,000.00.

TOLL COLLECTIONS
July 1, 1967 to June 30, 1968

Single Fares:			
2 axles, single rear tires	377,422	\$0.10	\$ 37,742.20
2 axles, dual rear tires	8,617	0.15	1,292.55
3 or more axles	35,171	0.20	7,034.20
Strip Tickets — 8 trips:			
2 axles, single rear tires	497,536	\$0.25	\$124,384.00
2 axles, dual rear tires	12,729	0.50	6,364.50
3 or more axles	5,972	1.00	5,972.00
			\$182,789.45

The following table of closed bridge accounts shows the final cost and distribution of cost:

Town	County	Bridge	Code	Total Cost	Paid by State	Paid by County	Paid by Town
Athens	Som.	Stoddard	6127	\$45,475.22	\$28,482.65	\$13,642.57	\$ 3,350.00
Athens	Som.	Tilton	6128	38,418.77	23,543.14	11,525.63	3,350.00
Avon	Frank.	Schoolhouse	6111	29,814.51	18,870.16	8,944.35	2,000.00
Bradley	Pen.	Blackman	2612	77,684.39	49,879.07	23,305.32	4,500.00
Corinth	Pen.	Trims Mill	5880	33,597.92	17,605.31	10,079.38	5,913.23
Greenwood	Oxford ...	Britton's Iron	6110	48,794.61	27,568.96	14,638.38	6,587.27
Lewiston	Andros.	Hart Brook	6117	16,839.44	4,209.86	5,051.83	7,577.75
Mount Vernon	Ken.	Wings Mill	2957	60,119.54	36,083.68	18,035.86	6,000.00
Pleasant Ridge	Som.	Houston Brook	3085	47,129.57	16,165.44	14,138.87	16,825.26
Rumford	Oxford ...	Abbott's Mill #2 ..	6109	75,939.69	18,984.92	22,781.91	34,172.86
Shirley	Pis.	Shirley	2761	42,474.37	28,532.06	12,742.31	1,200.00
Sweden	Oxford ...	Black Pond Brook	6105	35,901.05	23,130.73	10,770.32	2,000.00
Sweden	Oxford ...	Duck Pond Brook	6104	35,143.88	22,600.72	10,543.16	2,000.00
T6, R7	Pen.	Seboeis River	6044	60,025.38	41,273.27	18,007.61	744.50
T6, R8	Pen.	East Branch	6042	64,709.62	44,181.23	19,412.89	1,115.50
Wells	York	Sherburne	6122	33,552.96	8,388.24	10,065.89	15,098.83

**BRIDGE CONSTRUCTION CONTRACTS AWARDED BY STATE HIGHWAY COMMISSION
DURING FISCAL YEAR 1967-68**

Project No.	Town	Bridge	Description	Award Date	Contractor	Contract Award Amount
6157	Albion	Mill Stream	One 14' Span 7'3" Rise Str. Plate Arch	6-21-68	James W. Smith	\$ 27,229.50
6161	Biddeford	South Street	One 16'7" Span 10' Rise Str. Pl. Pipe Arch	9-27-67	C. H. Goodrich	21,914.50
6114	Corinth	Soule	One 24' Span 14' Rise Conc. Box	7-12-67	T. R. & W.C. Eastman	26,003.40
6132	C-Township	Birch Brook	One 27' Span Conc. Slab	9- 6-67	George R. Farris	27,227.60
	Damariscotta-					
5974	Nobleboro	Salt Bay	Two 138" Str. Plate Pipes	8-16-67	Ivan C. Shaw	39,329.50
3357	Dixmont	Tasker	One 23' Span 11' Rise Conc. Box	5- 8-68	Norman E. Jackson, Inc.	30,830.00
2436	Enfield	Kimball	One 144" Str. Plate Pipe	9-20-67	Susi Construction Corp.	20,587.50
3537	Exeter	*Davis	One 15' Span 7'9" Rise Str. Plate Arch	7-12-68	T. R. & W. C. Eastman	13,795.00
5821	Gorham-Windham	Mallison Falls	One 2-Span 57'-57' I-Beam Spans	6- 7-68	C. H. Goodrich	84,832.00
3918	Grand Falls Plt.	Grand Falls	One 42' I-Beam Span	6-13-68	Susi Construction Corp.	56,619.70
6140	Greenwood	Tracy	One 2-Span 14'-14' Spans 7'3" Rise Conc. Box	8- 2-67	George Morrison	24,336.00
3514	Lincoln Plt.	Olson	One 3-Span 61'-77'-61' I-Beam Spans	9-20-67	Reed & Reed	120,519.50
6158	Maxfield	Hardy Brook	Two 15'-4" Span 9'3" Rise Str. Pl. Pipe Arch	5- 8-68	Guy J. Thibodeau	25,857.00
6136	Mechanic Falls-Minot	Bog Brook	One 75' Span I-Beam Span	6-21-68	Callahan Bros., Inc.	60,810.50
6131	Sebec	Livermore	One 15' Span 7'-9" Rise Str. Plate Arch	8-16-67	T. R. & W. C. Eastman	22,928.25
3675	South Portland	Long Creek	One 14' Span 8' Rise Conc. Box	4-29-68	W. H. Hinman, Inc.	165,417.50
6151	Upton	Stony Brook	One 23' Span Conc. Slab	5- 8-68	Callahan Bros., Inc.	36,754.00
3121	Waterville	Gilman Street	Widen Existing Bridge	3-13-68	Susi Construction Corp.	28,813.00
2920	Wellington	Weeks	One 138" Str. Plate Pipe	9-20-67	Susi Construction Corp.	31,421.50

*Awarded in conjunction with Project #6114 Soule Bridge, Corinth.

MAINTENANCE DIVISION & STATE AID DIVISION

During the fiscal year 1968, our division was responsible for maintaining 10,475 miles of road, an increase over the previous year of 65 miles. The total mileage is made up of 3,687 miles on the State Highway System and 6,788 miles on the State Aid System. The Maintenance and State Aid Division directly administered the expenditure of \$9,032,684 for summer maintenance operations and \$8,518,410 for snow removal and sanding operations. Other maintenance expenditures were made by Bridge Maintenance in the amount of \$913,658, and Traffic Services expended \$961,237 for their operations. The total expenditure for maintaining these roads, therefore, amounts to \$19,425,989 an increase of \$742,215 over the previous year.

The "thin overlay" policy was discontinued this year, along with a cut back in the allotment of bituminous materials of 1,510,000 gallons. As a result of these measures, a resurfacing cost study was undertaken centered around our new stabilization plant located in the Portland Division. Costs have been kept from three sources: the crusher, the stabilization plant, and the street operations. Test sections were set up on different roadways with varying thicknesses, different application rates, and numerous types of grades of asphalts being used. Numerical results from this study have as yet not been compiled, but, with the cooperation of the Motor Transport Division, results from various equipment modification and changes have greatly increased the efficiency of our operations, thus making the study a worthwhile effect on this basis alone.

The Highway Opening and Vehicle Permit Section of our division issued 16,194 permits this year for loads that exceeded legal limits, for which \$96,828 was collected. This represents 750 more permits than last year, the increase being attributed mainly to house trailers or mobile home moves. Opening permits totaled 1,119 this year, representing a total income of \$79,557. Total square yardage opened this year was 25,389, an actual decrease over last year, but revenue was up, meaning higher type pavements were opened compared to the previous year.

"Tidy Coon" cleaned up the roadside litter at a cost of over \$249,600 representing an increase of nearly \$54,600 over the preceding year.

WINTER MAINTENANCE

Total expenditures for snow removal activities amounted to \$8,582,259. Over the previous year, this reflects an increase of \$977,222. Due to the nature of the storms, even greater effort had to be given in the area of ice control, which contributed substantially to the aforementioned increase by \$899,281. Ice control the previous season amounted to \$4,118,952, while this season's cost amounted to

PLANNING AND TRAFFIC DIVISION

Planning Section

Planning Section expenditures were \$574,228 for the fiscal year 1968 compared with a total of \$637,095 during the fiscal year 1967. Federal funds in the amount of \$297,650 were received.

Rural road inventory in Lincoln, Sagadahoc, and Cumberland counties and the urban inventory in Sagadahoc, Cumberland and York counties were completed. The annual revisions of bridge records and mileages were made, the compact boundaries of about 100 compact and urban areas updated, and the Official Highway Route Map published. Map sheets for five counties and seventeen compact and rural-urban areas were re-drawn.

Continuous traffic counts were made at 37 locations. Sampling counts were completed in four counties and 50% completed in three additional counties. Truck weights were sampled at nineteen locations, loadometer tables for 1967 completed, and truck design load factors revised.

Estimates were made of traffic service, the need for truck-climbing lanes on grades, and evaluations made for pavement design requirements on a large number of locations where reconstruction and relocation of highways were programmed. A wide variety of work was done in the Kittery-York area involving proposed construction in those areas.

Traffic was counted and turning movements were made at several locations in Ellsworth. Proposed locations for a bridge connecting Waterville and Winslow were evaluated on the basis of anticipated traffic usage, delays at intersections and railroad grade crossings and benefit-cost. Traffic assignments were made on proposed routes both in Topsham and Saco.

Annual statistical tables and the local road finance table were completed. Mileage and construction project records were maintained. Appraisals have been made for proposed changes in the State and Federal Aid Secondary systems. Data for the 1968 sufficiency rating report were analyzed. Considerable progress was made in the development of the Biennial Construction Program, as well as the evolution of a six-year construction program on the Federal Aid Primary system.

A general updating of information in the South Portland industrial and commercial area as part of the Portland Area Comprehensive Transportation Study area was completed and the effect on the highway network of a proposed shopping center was evaluated. Data collection was nearly completed in the Augusta-Gardiner Area Transportation Study. The computer programs necessary to assign traffic to a highway network were tested and initial work was done on other planning factors. Population projections by age and sex groupings were done for the individual communities involved in the Augusta-Gardiner area.

The electrical maintenance unit established approximately one year ago, consisting of two electricians and an aerial ladder truck, together with a complete electrical workshop was extremely effective in updating flashing beacons as well as providing electrical services for the installation of permanent traffic counters and flashing devices on barricades and advance warning for construction projects. This unit was originally set up with the basic responsibility of updating flashing beacons and carrying out a preventative maintenance program on traffic signals and beacons; however, it has been found advantageous to use their services in other ways as well.

At the present time, the Traffic Section is in the design stages of several projects consisting of a project for initial signing of a new Interstate interchange, a safety project covering approximately 140 miles of Interstate highway now open to traffic, and 18 traffic signal updating projects.

The Traffic Section has, this year, also become deeply involved in the Highway Safety Program in that the engineering forces reviewed approximately 25 fatal accident locations and approximately 100 high accident locations that were pointed out by the Accident Records section of this division. These reviews involve making a physical inventory of all existing highway features at the high accident location while making the field review, then making a complete office review of the data obtained, reaching conclusions and recommendations.

seasonal problems to proper care and use of equipment. The Safety Director and the Highway Training Officer made many on-the-job visits to these crews, gathering information and ideas for training courses and lectures to be used in the future.

OUTDOOR ADVERTISING

The Outdoor Advertisers Law is administered by a supervisor, four field inspectors and two office clerk-typists. The volume in 1967 closed slightly below the 1966 total.

Being an off-election year, political posters did not pose any problem, and circus signs have just about disappeared from the highways, but removal of discontinued and illegal advertising signs and unlawfully displayed posters resulted in approximately 1,300 such devices being removed from trees, utility poles, official traffic control sign posts, and from unauthorized locations.

Fees received for calendar year 1967 amount to \$33,899 compared to \$34,002 for 1966. There were 828 licenses and 4,832 permits issued amounting to \$18,455 and \$15,499, respectively.

REST AREAS

Two rest areas were opened this year which were built under the Highway Beautification Act using 100% Federal funds. The areas are located in Bethel on U.S. Route 2 along the Androscoggin River, and in Newcastle on U.S. Route 1 at Sherman Lake. Both of these sites provide large paved parking areas for cars and trucks.

State funds from the rest area appropriation were used to construct four other new areas. They are located in Brownfield on Route 113, in Canton on Route 140, in Dyer Brook on U.S. Route 2, and in Standish on Route 35.

In addition to the new construction there was a continuation of the modernization program to improve and enlarge some of the older areas.

Allocated for the year which started on July 1, 1967 was \$50,000. Carried forward from the previous year was \$29,228.51, there was also 121.77 in revenue making a total available of \$79,350.28. Expended during the year was \$54,196.60, leaving a balance of \$25,153.68.

EXPENDITURES ON PROJECTS ACTIVE DURING FISCAL YEAR 1968

Project No.	Location	Route	Expenditures		Physical Construction Complete	Mileage	Type	Contractor
			7/1/67 6/30/68	Total Through 6/30/68				
L 21-1(1)	Auburn, Turner	4	\$ 21,530.46	\$ 22,696.66	37	.03	Scenic	H. E. Sargent Inc.
Y 21-1(1)	Turner	4	824.53	1,083.08			P.E. & R.W.	
21-1(7)	Auburn, Turner	4	730,156.51	866,384.98	80	3.01	Bit. Conc.	H. E. Sargent Inc.
21-1(12)	Turner	4	138.45	12,837.23			P.E. & R.W.	
21-1(13)	Turner	4	6,690.06	12,141.64			P.E.	
22-1(501)	Livermore	108	2,016.16	2,016.16	00	.10	Improve	Force Account
135 (4)	Poland, Mechanic Falls	11 & 36	175,984.83	244,450.60	100	.73	Bit. Conc.	F. Rossi & Son
150 (501)	Durham	136	661.44	2,527.49	100		P.E.	
150 (502)	Durham	136	8,438.83	8,438.83	100	.10	Improve	Force Account
150 (503)	Auburn	136	12,366.10	12,366.10	100	12	Improve	Force Account
153-9(503)	Lewiston	126	1,387.80	117,045.84	*			
153-9(504)	Lewiston	126	7,485.28	7,485.28			P.E.	
156 (502)	Bowdoin, Lisbon	125	5,065.26	5,065.26			P.E.	
188 (5)	Livermore Falls	133	10,444.75	23,247.85			P.E. & R.W.	
921-1(14)	Auburn	Minot Ave.	5,991.49	5,991.49			P.E. & R.W.	
L 50-2(2)	Cyr	U.S. 1	5,675.42	5,929.26	31	.26	Picnic Area	Hornbrook Inc.
50-2(8)	Cyr	U.S. 1	638,596.00	1,059,320.47	87	3.98	Bit. Conc.	Hornbrook Inc.
50-2(9)	Caribou	U.S. 1	48,194.02	139,789.80			P.E. & R.W.	
50-2(11)	Van Buren	U.S. 1	102,545.95	116,669.98	73	.18	Bit. Conc.	Hornbrook Inc.
50-3(506)	Frenchville	U.S. 1	2,475.54	7,278.22	100		P.E.	
50-3(507)	Van Buren	U.S. 1	357.23	1,178.90			P.E.	
50-3(508)	Van Buren	U.S. 1	13,469.51	13,469.51	25	6.10	Improve	Force Account
54-1(502)	Presque Isle	167	6,323.65	31,837.40	20	.66	Hot Bit.	Hornbrook Inc.
54-1(503)	Fort Fairfield	167	5,898.98	9,237.58			P.E. & R.W.	
56-1(1)	Limestone	89	57,820.07	71,587.10	32	.46	Bit. Conc.	Bridge Const.
95-9(4)	Dyer Brook, Houlton	Interstate	1,040.77	895,114.44	100		P.E. & R.W.	
95-9(5)	Dyer Brook, Oakfield	Interstate	1,253.44	41,084.00	*			
95-9(6)	Oakfield, Smyrna	Interstate	842.84	13,105.02			R.W.	
95-9(7)	Smyrna	Interstate	193.27	28,936.01	*			
95-9(10)	Houlton	Interstate	503.75	120,092.64	*			
95-9(11)	Houlton	Interstate	27.48	35,652.32	*			
95-9(12)	Dyer Brook, Oakfield	Interstate	78,173.91	1,367,645.44	*			
95-9(13)	Oakfield, Smyrna	Interstate	32,371.16	1,305,684.91	*			
95-9(14)	Smyrna	Interstate	52,343.36	1,881,314.73	*			
95-9(17)	Houlton	Interstate	10,661.68	1,497,306.73	*			
95-9(18)	Houlton	Interstate	28,042.13	1,401,715.10	*			
95-9(25)	Oakfield, Smyrna	Interstate	22,754.26	808,369.74	*			
95-9(26)	Smyrna, Houlton	Interstate	32,772.48	1,343,394.30	*			

Project No.	Location	Route	Expenditures		Physical Construction Complete	Mileage	Type	Contractor
			7/1/67 6/30/68	Total Through 6/30/68				
798 (501)	St. Agatha	162	2.41	70,536.11	*			
798 (503)	St. Agatha	162	5,394.76	22,297.50	15	1.00	S.T.G.	Force Account
950-2(10)	Caribou	U.S. 1	19,477.11	871,568.46			P.E. & R.W.	
950-2(12)	Caribou	U.S. 1	646,815.68	1,188,163.15	71	1.31	Bit. Conc.	Hornbrook Inc.
1-1(13)	Scarborough	U.S. 1	34,439.70	176,517.29			P.E. & R. W.	
1-1(20)	Scarborough	U.S. 1	344,779.26	508,079.94	52	.64	Bit. Mac.	W. H. Hinman Inc.
1-1(22)	Scarborough	U.S. 1	336,615.50	336,615.50	66	1.07	Gravel	H. E. Sargent Inc.
1-1(23)	Scarborough	U.S. 1	160,978.22	160,978.22	96	.07	Bridge	Cianchette Bros.
1-1(515)	Freeport	U.S. 1	12.80	1,015.35	*	.50	Signing	Force Account
1-1(523)	Scarborough	U.S. 1	(3,175.56)	53,795.43			P.E.	
12-1(507)	Gorham	25	807.50	807.50	100		P.E.	
14-1(9)	Bridgton	U.S. 302	12,563.48	33,332.32			P.E. & R.W.	
14-1(10)	Windham	U.S. 302	5.34	5.34			P.E. & R.W.	
14-1(504)	Windham	U.S. 302	71,655.59	78,835.06	90	.03	Bit. Conc.	W. H. Hinman Inc.
14-1(505)	Bridgton	U.S. 302	105,149.95	105,149.95	100	6.20	Improve	Force Account
14-1(507)	Windham	U.S. 302	124.07	124.07	00		Signals	R. W. Lebaron
15-1(13)	Falmouth, Cumberland	26-100	30.58	10,902.07			P.E.	
15-1(505)	Falmouth, Cumberland	26	68,871.59	73,358.48	90	.35	Improve	Force Account
15-1(506)	New Gloucester	100	5,319.47	5,319.47			P.E.	
16-1(502)	New Gloucester, Poland	100	14,788.24	58,064.94	100		P.E.	
16-1(504)	New Gloucester	26	3,048.37	8,944.94			P.E.	
19-1(2)	Bridgton, Harrison	117	38,931.15	155,738.04			P.E. & R.W.	
26-1(31)	Brunswick, Bath	U.S. 1	147,099.52	174,017.96	100	7.96	Signing	S. T. Griswold & Co.
26-1(32)	Brunswick	U.S. 1	635.86	6,620.92	100	1.70	Guardrail	W. H. Hinman Inc.
L 95-4(1)	Falm., Cumb., Yarm.	Interstate	8,411.89	12,307.00			R.W.	
95-4(17)	Brunswick	Interstate	43,171.42	199,568.21	100		P.E. & R.W.	
95-4(19)	Yarmouth, Freeport	Interstate	7,838.17	16,350.30			P.E.	
95-4(20)	Falmouth, Brunswick	Interstate	2,589.26	61,746.26	100	17.80	Guardrail	W. H. Hinman Inc.
95-5(1)	Brunswick, Topsham	Interstate	36,114.32	208,594.49			P.E. & R.W.	
95-5(4)	Brunswick, Topsham	Interstate	6,652.75	6,888.87	100		P.E.	
119 (503)	Gray	115	41,046.41	56,005.41	100	.70	Improve	Force Account
120 (4)	Cape Elizabeth	77	175,552.77	206,030.43	31	1.30	Bit. Conc.	W. H. Hinman Inc.
120 (505)	Scarborough	114	24,439.62	45,387.48	100	.80	S.T.G.	Force Account
120-9(503)	So. Portland	77	4,588.71	496,484.85	*			
126 (1)	Standish, Sebago	114	18,317.99	44,482.72			P.E. & R.W.	
126 (5)	Sebago	114	16,498.83	51,678.26			P.E. & R.W.	
126 (503)	Gorham	114	245.44	51,655.35	*			
127 (1)	Portland, Westbrook	Urban	20,320.64	20,960.67			P.E. & R.W.	
127 (2)	Westbrook	Connector	38.88	38.88			P.E.	
136 (1)	Casco	121	73,339.96	456,570.56	100	1.71	Bit. Conc.	Bridge Const. Corp.
L136 (1)	Casco	121	5,744.18	14,369.38	100	.24	Scenic	Bridge Const. Corp.

Project No.	Location	Route	Expenditures		Physical Construction Complete	Mileage	Type	Contractor
			7/1/67 6/30/68	Total Through 6/30/68				
32-2(501)	Farmington	4 & 43	11.29	2,396.54			P.E.	
32-2(502)	Phillips	4 & 142	19,473.89	42,850.60			P.E. & R.W.	
L180 (1)	Twp. E. Rangeley	17	1,605.82	22,264.23			P.E. & R.W.	
181 (503)	Dallas	16	6.00	33,654.24	*			
185 (2)	Dixfield, Jay	17	95,845.13	113,185.11	36	1.40	Bit. Conc.	Thomas DiCenzo
186 (2)	Wilton	156	29,543.02	42,549.23			P.E. & R.W.	
237 (12)	Eustis	27	21,599.79	174,320.93	100	.80	Bit. Conc.	W. H. Hinman Inc.
237 (13)	Kingfield, N. Portland	27	305.32	6,472.64	*		P.E. & R.W.	
722 (502)	Jay	Thom. Rd.	6,858.95	200,608.65	*			
722 (503)	Jay	Thom. Rd.	7,961.08	189,805.18	*			
L 42-1(1)	Ellsworth	3	5,001.72	10,526.12	100	2.75	Landscape	H. MacQuinn Inc.
42-1(4)	Ellsworth	U.S. 1A	146,321.20	543,463.05	100	2.75	Bit. Conc.	H. MacQuinn Inc.
42-1(12)	Orland	U.S. 1	425.03	14,030.69			P.E. & R.W.	
42-1(506)	Bucksport, Verona	U.S. 1	7,083.90	19,990.99	*			
43-1(7)	Dedham	U.S. 1A	27,216.13	666,780.03	*			
43-1(9)	Dedham, Ellsworth	U.S. 1A	18,882.15	48,008.36			P.E.	
L 44-1(1)	Gouldsboro	U.S. 1	3,976.68	4,071.85	100	.17	Scenic	H. MacQuinn Inc.
44-1(8)	Gouldsboro	U.S. 1	243,612.68	455,595.11	100	1.85	Bit. Conc.	H. MacQuinn Inc.
44-1(507)	Hancock	U.S. 1	(20.00)	10,116.39	*			
250 (7)	Sedwick, Blue Hill	172	130,740.76	152,823.71	76	.80	Mix Bit.	Thomas DiCenzo
255 (503)	Orland	175	5,237.05	16,768.77	06	.32	Mix Bit.	H. E. Sargent Inc.
257 (3)	Bar Harbor	3	16,941.80	36,173.97			P.E. & R.W.	
P257 (4)	Bar Harbor	3	21,956.24	29,583.62			P.E. & R.W.	
258 (1)	Mt. Desert	102	110.00	237,002.32	*			
258 (502)	Southwest Harbor	102	11.23	1,983.70	*			
258 (504)	Tremont	102	16,165.12	17,704.77			P.E.	
281 (5)	Amherst	9	76.80	318,943.11	*			
281 (8)	Amherst	9	153,657.47	174,091.84	65	1.06	S.T.G.	Thomas DiCenzo
294 (502)	Gouldsboro	186	56,463.00	199,495.33	100	.98	Bit. Conc.	R. F. Sargent Inc.
298 (6)	Hancock, Franklin	182	52,242.80	72,286.52	22	.51	Bit. Conc.	Harold MacQuinn Inc.
298 (501)	T 10 S D	182	217.75	933.68			P.E.	
1-2(513)	Winslow	U.S. 201	6,084.03	7,340.00			P.E. & R.W.	
15-1(507)	Winthrop	100	8,691.59	9,161.13	100	.32	Improve	Force Account
L 28-1(1)	China & Palermo	3	6,656.57	13,536.04	100	2.91	Rest Area	F. Rossi & Sons
28-1(3)	China, Palermo	3	113,557.95	836,651.48	100	2.91	Bit. Conc.	F. Rossi & Sons
31-1(8)	Waterville, Oakland	11 & 137	2,522.44	147,810.91			R.W.	
32-1(4)	Belgrade	8 & 27	7.06	327,918.12	*			

Project No.	Location	Route	Expenditures		Physical Construction Complete	Mileage	Type	Contractor
			7/1/67 6/30/68	Total Through 6/30/68				
194 (501)	St. George	131	501.22	19,303.88			P.E.	
196 (2)	Owls Head, So. Thomaston	73	7,908.66	22,913.77			P.E. & R.W.	
196 (501)	South Thomaston	73	24,882.31	25,860.85	100		P.E. & R.W.	
199 (1)	Rockport, Warren	90	14,007.66	48,605.73			P.E. & R.W.	
199 (3)	Warren	90	1,819.40	344,495.40	*			
199 (4)	Rockport	90	48,933.82	144,628.53	100	.14	Bit. Conc.	Bridge Const. Corp.
199 (503)	Warren	90	2,762.87	2,762.87	100		Improve	Force Account
199 (504)	Rockport	90	24,370.54	25,972.88	100		P.E. & R.W.	
216 (1)	Camden	52	(550.00)	231,540.09	*			
216 (2)	Camden	52	22,350.94	28,443.62			P.E. & R.W.	
L 26-1(3)	Newcastle	U.S. 1	86,253.13	96,248.68	100	.28	Picnic Area	C. F. Johnson & Son
26-1(28)	Damariscotta, Nobleboro	U.S. 1	36,103.82	92,035.82			P.E. & R.W.	
26-1(34)	Nobleboro, Waldoboro	U.S. 1	13,144.56	28,137.42			P.E. & R.W.	
26-1(508)	Waldoboro	U.S. 1	62.49	5,107.85			P.E.	
26-1(509)	Waldoboro	32 & U.S. 1	3,390.74	8,164.39	100	.28	Improve	Force Account
26-1(511)	Wiscasset, Edgecomb	U.S. 1	7,878.66	7,878.66			P.E.	
30-1(504)	Jefferson	17	485.29	485.29			P.E.	
30-1(505)	Jefferson	17	1,339.13	1,339.13			P.E.	
159 (2)	Boothbay Harbor	96	177,339.88	329,947.85	100	.76	Bit. Conc.	Bridge Const. Corp.
159 (505)	Edgecomb	27	1,974.09	2,651.94			P.E.	
159 (506)	Boothbay	27	4,064.01	13,546.58	100	.20	Improve	Force Account
160 (2)	So. Bristol	129	149.89	8,089.65			P.E.	
160 (4)	South Bristol	129	71,200.22	103,402.98	27	1.19	S.T.G.	C. F. Johnson & Son
160 (501)	South Bristol	129	752.83	752.83			P.E.	
161 (3)	Bristol	130	90,312.05	330,679.37	100	1.21	Bit. Conc.	Bridge Const. Corp.
193 (3)	Waldoboro	Jefferson	15,428.65	20,974.59			P.E. & R.W.	
200 (1)	Jefferson	32	1,891.46	1,891.46			P.E.	
14-1(506)	Fryeburg	U.S. 302	72,510.34	72,510.34	100	6.00	Improve	Force Account
17-1(12)	Bethel	26	386.99	484.89			P.E.	
17-1(505)	Oxford	26	1,572.67	1,572.67			P.E. & R.W.	
22-1(7)	Canton	108	25,246.96	27,934.55			P.E. & R.W.	
L 25-1(1)	Bethel	U.S. 2	26,736.70	44,703.80	100	.22	Scenic	Callahan Bros. Inc.
Y 25-1(1)	Rumford	U.S. 2	2,356.23	2,624.31			P.E. & R.W.	
L 25-1(2)	Rumford	U.S. 2	4,600.88	4,830.79	03	.37	Scenic	Bridge Const. Corp.
Y 25-1(2)	Mexico	U.S. 2	664.80	952.64			P.E. & R.W.	
25-1(18)	Bethel	U.S. 2	192,224.96	505,841.57	100	.56	Bit. Conc.	Callahan Bros. Inc.
131 (6)	Lovell	5	13,183.39	232,938.75	*			

Project No.	Location	Route	Expenditures		Physical Construction Complete	Mileage	Type	Contractor
			7/1/67 6/30/68	Total Through 6/30/68				
95-8(55)	Howland, Mattamiscontis	Interstate	14,123.92	838,967.22	*			
95-8(56)	Mattamiscontis, T2R8	Interstate	24,415.74	1,186,392.08	*			
95-8(57)	T2R8, T2R9	Interstate	120,363.01	1,545,761.12	*			
95-8(58)	T2R9, Medway	Interstate	1,183.86	1,556,171.68	*			
95-8(59)	Howland	Interstate	738.18	573,944.20	*			
95-8(61)	T2 R8	Interstate	(140.84)	362,969.98	*			
95-8(62)	Medway	Interstate	6,824.19	475,208.18	*			
95-8(63)	Old Town	Interstate	32,197.78	280,618.33	*			
95-8(64)	Howland, T2R8	Interstate	38,166.95	1,230,334.76	*			
95-8(65)	T2R8, T2R9, Medway	Interstate	49,016.26	1,243,849.97	100	15.04	Bit. Conc.	Northeast Paving
95-8(67)	Bangor, Howland	Interstate	19,321.14	90,360.82	100	35.90	Guardrail	W. H. Hinman Inc.
95-8(69)	Orono, Howland	Interstate	55,257.22	117,872.87	100	23.68	Landscape	Banak Nursery
95-8(70)	Alton	Interstate	817.50	8,530.01	*			
95-8(71)	Old Town, Howland	Interstate	68,958.76	112,849.32			P.E.	
95-8(72)	Bangor, Veazie, Orono	Interstate	4,692.69	5,467.20			P.E.	
95-8(73)	Howland, Medway	Interstate	41,699.00	43,473.07	54	27.16	Landscape	Searsport House Nursery
95-8(74)	Howland, Medway	Interstate	79,363.03	80,742.74			P.E.	
95-8(75)	Bangor	Interstate	368,860.85	370,476.29	56	4.92	Overlay	Lane Const. Corp.
95-8(79)	Bangor	Interstate	89,588.69	89,588.69	56	2.18	Median	Lane Const. Corp.
95-8(80)	Bangor, Orono	Interstate	8,810.68	8,810.68			P.E.	
95-8(83)	Bangor, Veazie	Interstate	1,563.13	1,563.13			P.E.	
95-9(1)	Medway, Dyer Brook	Interstate	17,381.15	1,004,549.41	*			
95-9(27)	Medway, Sherman	Interstate	17,874.75	181,087.56			R.W.	
95-9(29)	Medway	Interstate	41,393.61	1,910,798.80			R.W.	
95-9(30)	Medway	Interstate	339,985.72	2,013,472.03	*			H. E. Sargent Inc.
95-9(31)	T1R6	Interstate	226,989.23	1,407,794.49	100	4.85	Gravel	W. H. Hinman Inc.
95-9(49)	Medway, Oakfield	Interstate	285,810.94	305,249.64	100	4.79	Gravel	National Fence Co.
95-9(51)	Medway, Oakfield	Interstate	10,318.46	10,318.46	100	41.46	Signing	
95-9(53)	T1R6	Interstate	8,640.58	8,640.58			P.E.	
95-9(54)	Medway, Oakfield	Interstate	994.10	994.10			P.E.	
96-8(1)	Bangor	Interstate	71,946.47	71,946.47	56	4.95	Bit. Conc.	Lane Const. Corp.
96-8(2)	Bangor	Interstate	46.06	46.06	00	.16	Bit. Conc.	H. E. Sargent Inc.
210 (509)	Dixmont	9	2,703.39	3,174.38	00	6.36	Improve	Force Account
223 (503)	Newport	Ridge Road	344.54	344.54			P.E.	
279 (2)	Bangor	Hogan Road	686.69	686.69			P.E.	
281 (7)	Eddington, Clifton	9	404,529.79	484,781.28	100	1.99	S.T.G.	H. E. Sargent Inc.
282 (2)	Eddington	178	13,147.71	34,663.04			P.E.	
282 (3)	Bradley	178	11,045.62	11,100.15			P.E.	
285 (1)	Hermon	Cold Brook	127,292.62	162,219.80	80	1.10	Bit. Conc.	Thomas DiCenzo
286 (1)	Old Town	43	1,109.73	1,109.73			P.E.	
287 (508)	Old Town	16	349.90	806.48			P.E.	

Project No.	Location	Route	Expenditures		Physical Construction Complete	Mileage	Type	Contractor
			7/1/67 6/30/68	Total Through 6/30/68				
926-1(10)	Bath	U.S. 1	29,034.33	587,255.00	*			
L 33-1(1)	Solon, Bingham	U.S. 201	4,699.66	33,210.85	*			
L 33-1(2)	Moscow, Caratunk	U.S. 201	51,948.85	52,695.00	84	9.85	Clearing	Victor Vigue
33-1(8)	Solon, Bingham	U.S. 201	66,154.04	455,353.09	100	1.84	Bit. Conc.	W. H. Hinman Inc.
33-1(9)	Jackman	U.S. 201	521,055.64	653,266.12	100	1.65	Bit. Conc.	Bridge Const. Corp.
33-1(12)	Fairfield	U.S. 201	22,698.98	67,714.13			P.E. & R.W.	
33-1(13)	Bingham	U.S. 201	90,936.82	127,743.65			P.E. & R.W.	
33-1(14)	Fairfield	U.S. 201	14,583.88	21,248.21			P.E. & R.W.	
E 33-1(16)	Bingham	U.S. 201	16,383.87	16,739.53			P.E.	
33-1(17)	Bingham	U.S. 201	17,969.36	19,272.71			P.E. & R.W.	
33-1(506)	Fairfield	U.S. 201	4,664.65	5,082.56	*			
33-2(501)	The Forks	U.S. 201	181.43	47,006.29	*			
33-2(502)	The Forks, Caratunk	U.S. 201	18.00	924.67	*			
33-2(503)	Sandy Bay, Moose Rv.	U.S. 201	678.33	678.33	40	13.40	Improve	Force Account
95-7(56)	Fairfield, Pittsfield	Interstate	4,565.68	94,670.41	*			
95-7(57)	Pittsfield, Palmyra	Interstate	6,416.32	126,553.73	*			
95-7(58)	Pittsfield, Hampden	Interstate	3,424.22	10,122.41			P.E.	
95-7(504)	Pittsfield	Interstate	799.68	799.68			R.W.	
232 (3)	Fairfield	104 & 139	9,022.32	269,765.81	*			
232 (4)	Fairfield	104 & 139	182,201.73	221,652.67	40	2.37	Bit. Conc.	Farrin Bros. & Smith
232 (5)	Fairfield, Norridgewock	139	8,538.01	28,357.72	*		P.E. & R.W.	
232 (502)	Fairfield	139	3,431.99	6,218.55	*			
237 (11)	New Portland	27	2,207.80	242,101.09	*			
237 (14)	New Portland	27	15,758.56	20,006.69	00	1.04	Mix Bit.	Thomas DiCenzo
241 (2)	Cornville, Harmony	150	9,542.66	23,591.56			P.E.	
241 (7)	Skowhegan	150	53,192.58	405,342.33	100	1.33	Bit. Conc.	Farrin Bros. & Smith
241 (9)	Cornville	150	3,585.38	16,201.69			P.E.	
261 (501)	Pittsfield	152	7,040.15	7,040.15			P.E. & R.W.	
268 (504)	Sandwich Academy Grant	15	3,990.55	99,533.75	*			
268 (505)	Rockwood	15	22,575.99	167,501.61	100	.60	S.T.G.	Farrin & Hall
26-2(18)	Frankfort	U.S. 1A	2,813.35	20,380.08			P.E. & R.W.	
28-1(2)	Palermo, Liberty	3	15,863.81	64,372.58			P.E. & R.W.	
L 28-1(2)	Montville, Searsmont	3	64.00	386.68			R.W.	
28-1(7)	Palermo	3	11,848.06	11,848.06			P.E.	
28-1(501)	Liberty, Belfast	3	2,241.48	2,241.48			P.E.	
28-1(502)	Belfast	3	271.77	271.77			P.E.	
217 (503)	Freedom	137	10,560.43	10,560.43	90	3.95	Improve	Force Account
217 (504)	Knox	137	21,303.81	21,303.81	90	5.50	Improve	Force Account
222 (3)	Knox	220	26,884.23	32,931.77	25	.82	Bit. Conc.	F. Tranquillo & Co.

Project No.	Location	Route	Expenditures		Physical Construction Complete	Mileage	Type	Contractor
			7/1/67 6/30/68	Total Through 6/30/68				
100 (507)	York	U.S. 1A	118,798.73	136,723.41	91	.88	Bit. Conc.	Bridge Const. Corp.
100 (508)	York	U.S. 1A	21.65	6,940.45	100	.40	Drainage	Force Account
101 (1)	Berwick	236	259,893.47	346,029.84	100	1.19	Bit. Conc.	Bridge Const. Corp.
102 (1)	York	91	8,629.70	19,003.92			P.E. & R.W.	
102 (502)	York	91	86.91	63,513.68	*			
105 (5)	North Berwick	4	1,742.65	24,980.01			P.E. & R.W.	
105 (6)	Sanford	4	2,621.40	478,083.59	*			
105 (8)	No. Berwick, Sanford	4	205,760.06	215,231.43	51	2.46	Bit. Conc.	Bridge Const. Corp.
105 (504)	Alfred	U.S. 202	42.94	19,465.01			P.E. & R.W.	
110 (502)	Shapleigh	11	2,095.06	2,095.06			P.E.	
112 (5)	Wells, Kennebunkport	9	52.36	3,992.20			P.E.	
112 (508)	Kennebunk	9	109,791.07	114,689.12	100	.55	Bit. Conc.	Iafolla Const. Co.
112 (509)	Kennebunkport	9	1,562.98	4,661.35			P.E.	
L114 (1)	Waterboro	5	2,996.82	4,216.32	100		R.W.	
114 (4)	Waterboro	5	171,321.20	192,294.72	72	1.62	Bit. Conc.	H. E. Sargent Inc.
114 (505)	Limerick, Cornish	5	19,365.48	37,297.87			P.E.	
115 (502)	Limington	11	95.15	13,727.50	*			
115 (503)	Limington	112	1,994.97	1,994.97			R.W.	
118 (502)	Saco	112	1,685.24	3,343.91			P.E.	
119 (7)	Hollis	U.S. 202	4,551.39	253,007.21	*			
119 (8)	Hollis	4A	15,477.04	44,958.19			P.E. & R.W.	
195-2 (1)	Saco	Interstate	4,606.78	9,813.33			P.E. & R.W.	
901-1(526)	Saco	U.S. 1	5.00	14,840.72			R.W.	
901-1(530)	Biddeford	U.S. 1	945.56	945.56			P.E.	
95-7(503)	Interstate Overlay	Interstate	4,650.19	4,650.19				
A600 (1)	State Wide Inv.		7,694.31	22,721.85				
999 (401)	Roadside Improvement		6,490.85	32,421.64				
999 (402)	R/W—Closed Projects		90,835.03	415,299.01				
999 (504)	Engineering, Non-Participating		710,809.36	2,410,741.37				
999 (505)	Design Manual		2,991.80	3,070.60				
999 (507)	Aerial Photography		16,515.00	16,515.00				
999 (509)	State Wide Junkyards		3,848.51	3,848.51				
999 (510)	State Wide Sketch Maps		1,464.03	1,464.03				
999 (556)	Eng. Proc. Review Unit		14,239.47	14,239.47				
999 (557)	Index of County Records		1,792.09	1,792.09				
999 (800)	Leave Undistributed		115,210.27	290,234.34				
	Adjustments		11,363.51	11,363.51				
			\$33,476,281.05	\$101,001,524.98				

*Physical construction reported previously as complete.

**MAINTENANCE EXPENDITURES BY COUNTY
AND ADMINISTRATIVE SYSTEM FOR THE
FISCAL YEAR ENDING JUNE 30, 1968**

COUNTY	EXPENDITURES			COST PER MILE*		
	Total	State Highway	State Aid	Total	State Highway	State Aid
Androscoggin	\$ 300,308	\$ 111,438	\$ 188,870	\$876	\$1,226	\$749
Aroostook	1,082,817	676,501	406,316	836	1,015	701
Cumberland	732,990	311,939	421,051	993	1,314	841
Franklin	421,901	190,383	231,518	906	979	854
Hancock	629,344	291,477	337,867	926	1,377	722
Kennebec	686,662	273,557	413,105	942	1,057	878
Knox	233,680	62,891	170,789	693	894	640
Lincoln	352,408	111,090	241,318	872	1,152	785
Oxford	558,442	268,350	290,092	792	1,100	629
Penobscot	1,073,006	384,958	688,048	875	900	861
Piscataquis	346,769	141,636	205,133	915	1,148	802
Sagadahoc	178,788	56,720	122,068	829	1,114	741
Somerset	746,383	347,283	399,100	975	1,231	825
Waldo	409,503	134,924	274,579	704	997	616
Washington	696,394	392,509	303,885	912	1,310	655
York	566,133	186,513	379,620	682	741	656
TOTAL	\$9,015,528	\$3,942,169	\$5,073,359	\$866	\$1,082	\$749
Town Ways	17,157					
TOTAL	\$9,032,685					

*Cost Per Mile based on mileage as of March 1, 1967.

HIGHWAY SURPLUS

Fiscal Year 1968

Balance July 1, 1967			\$3,269,872.55
Estimated Funds Available	\$50,245,381.00		
Allocations—Legislative	49,244,004.50		1,001,376.50
	<u> </u>		
Balance After Legislative Appropriations			4,271,249.05
Credits:			
Adjustments		18,692.28	
Actual Undedicated Revenue	44,156,236.40		
Estimated Undedicated Revenue	42,200,429.00	1,955,807.40	
Transfers Planning		3,500.00	
Lapsed Balances		807,592.89	
Returned Funds:			
Augusta Bridge	\$33,933.32		
Garage	38,056.70		
Chamberlain Bridge	40,000.00		
Fore River	27,382.68		
Deer Isle	152.41		
	<u> </u>	<u>139,525.11</u>	<u>2,925,117.68</u>
Total			7,196,366.73
Transfers:			
State Police	113,832.58		
Motor Vehicles	126,435.00		
Highway Safety	1,762.00		
Compensation	38,950.00		
Salaries	529,269.00		
Buildings	40,500.00		
Winter Maintenance	600,000.00	1,450,748.58	
	<u> </u>	<u> </u>	
Advances:			
Garage Buildings	779,634.52		
Garage Equipment	248,308.30		
Working Capital	50,000.00	1,077,942.82	2,528,691.40
	<u> </u>	<u> </u>	
Balance June 30, 1968			\$4,667,675.33

HIGHWAY FUND

Comparative Balance Sheet

ASSETS	1968	1967	LIABILITIES	1968	1967
Cash—Demand Deposits	\$ 1,074,317.27	\$ 420,167.58	Accounts Payable	\$ 89,290.27	\$ 417,256.72
Investments—Bonds	6,292,042.01	7,921,345.28	Due to Other Funds	53,995.03	65,696.81
Mortgages	4,743,677.92	4,966,808.29	Other Current Liabilities	105,649.50	124,766.45
Accounts Receivable	4,268,522.07	5,738,530.10	Total Current Liabilities	\$ 248,934.80	\$ 607,719.98
Less Reserves	8,127.93	7,676.63			
	4,260,394.14	5,730,853.47	Reserves & Surplus		
Due from Other Funds	185,000.00	798,524.80	Reserves:		
Working Capital Advances to			Authorized Expenditures	\$21,076,238.43	\$25,994,639.85
Other Funds	8,292,470.47	7,302,584.35	Advances	8,292,470.47	7,302,584.35
			Special Federal Project	399,114.87	605,264.13
Other Assets	54,495.03	66,511.33	Joshua L. Chamberlain Bridge	185,000.00	225,000.00
Deferred Accounts Receivable	399,114.87	605,264.13	Augusta, Toll Bridge		190,000.00
Deferred Debt	9,571,294.00	10,776,342.00	Jonesport-Beals Bridge		383,524.80
			Plant Nursery	3,371.81	9,795.57
TOTAL ASSETS	\$34,872,805.71	\$38,588,401.23	Total Reserves	\$29,956,195.58	\$34,710,808.70
			Surplus	4,667,675.33	3,269,872.55
			TOTAL LIABILITIES, Reserves		
			and Surplus	\$34,872,805.71	\$38,588,401.23

Debt Fund

Amount Necessary to Retire Bonds: (Jonesport-Beals \$570,000 included)	\$41,570,000.00	\$39,277,000.00	Bonds Payable	\$41,570,000.00	\$39,277,000.00
Bonds Authorized and Allocated	9,600,000.00	6,323,658.00			
Bonds Pending—Allocated	8,819,931.00				
Bonds Pending—Not Allocated	3,980,069.00				

TOLL BRIDGES

Comparative Statement of Revenues and Expenditures

June 30, 1968

	Joshua L. Chamberlain		Jonesport-Beals		Augusta Memorial	
	1968	1967	1968*	1967	1968*	1967
REVENUES:						
Tolls Collected	\$181,138.10	\$172,912.25	\$ 16,222.60	\$ 46,534.33	\$ 44,644.45	\$134,087.60
Other	2,603.26	2,939.42	1,655.59	2,640.23	93.26	626.95
	\$183,741.36	\$175,851.67	\$ 17,878.19	\$ 49,174.56	\$ 44,737.71	\$134,714.55
EXPENDITURES:						
Personal Services	\$ 75,555.16	\$ 67,145.33	\$ 15,453.10	\$ 30,019.34	\$ 32,842.09	\$ 79,901.66
Other Expenses	10,182.86	11,847.59	3,642.83	3,463.35	3,833.73	10,726.33
Interest Payments	31,875.00	32,625.00	13,893.60	14,724.80		2,400.00
	\$117,613.02	\$111,617.92	\$ 32,989.53	\$ 48,207.49	\$ 36,675.82	\$ 93,027.99
Operations Gain	\$ 66,128.34	\$ 64,233.75	\$ (15,111.34)	\$ 967.07	\$ 8,061.89	\$ 41,686.56
Debt Retirement	90,000.00	95,000.00	30,000.00	40,000.00	30,000.00	40,000.00
	\$207,613.02	\$206,617.92	\$ 62,989.53	\$ 88,207.49	\$ 66,675.82	\$133,027.99
Net Loss or Gain	\$ (23,871.66)	\$ (30,766.25)	\$ (45,111.34)	\$ (39,032.93)	\$ (21,938.11)	\$ 1,686.56
Reserve for Debt at Beginning of Year	\$111,524.45	\$142,951.60	\$ 46,674.65	\$ 85,555.53	\$ 25,907.93	\$ 23,712.52
Adjustment of Balance Forwarded		(660.90)		152.05		508.85
Reserve for Debt at End of Year	\$ 87,652.79	\$111,524.45	\$ 1,563.31	\$ 46,674.65		\$ 25,907.93

*Tolls eliminated from Jonesport-Beals and Augusta Memorial Bridges, October 7, 1967.

HIGHWAY FUND
SUMMARY OF AVAILABLE FUNDS AND EXPENDITURES

Fiscal Year Ending June 30, 1968

	Balance Forward July 1, 1967	Allocations	Surplus Transfers	Revenues	Allocation Transfers	Total Available	Expenditures	Balances June 30, 1968	
								Lapsed	Carried
Highway Construction	\$18,019,639.21	\$11,120,049.00*	\$	\$18,402,950.42	\$ (134,735.04)	\$47,407,903.59	\$33,476,281.05	\$	\$13,931,622.54
Grade Crossing Protection	52,471.25	10,000.00				62,471.25	10,566.60		51,904.65
Picnic Areas	29,228.51	50,000.00		121.77		79,350.28	54,196.60		25,153.68
Bridge Construction	952,011.21	700,000.00		384,181.10	54,133.06	2,090,325.37	1,194,396.71		895,928.66
Belfast Bridge	155,350.07					155,350.07		155,350.07	
	\$19,208,700.25	\$11,880,049.00	\$	\$18,787,253.29	\$ (80,601.98)	\$49,795,400.56	\$34,735,440.96	\$ 155,350.07	\$14,904,609.53
State Aid Construction	\$ 2,302,196.44	\$ 2,325,000.00	\$	\$ 1,156,326.17	\$ (633,335.17)	\$ 5,150,187.44	\$ 2,336,561.12	\$	\$ 2,813,626.32
State Aid Construction (Special)	259,984.99	1,000,000.00			577,507.83	1,837,492.82	1,295,225.34		542,267.48
Town Road Improvement	708,673.00	1,500,000.00		(1,450.17)	(57,352.71)	2,149,870.12	1,431,870.34		717,999.78
Special Resolves		9,552.50				9,552.50	9,552.50		
Island Refunds	29,042.42	14,000.00			(7,417.97)	35,624.45	7,288.79	236.58	28,099.08
Roads—Ski Areas	35,256.47	25,000.00				60,256.47			60,256.47
	\$ 3,335,153.32	\$ 4,873,552.50	\$	\$ 1,154,876.00	\$ (120,598.02)	\$ 9,242,983.80	\$ 5,080,498.09	\$ 236.58	\$ 4,162,249.13
Bridge Maintenance	\$ 175,165.33	\$ 984,000.00	\$ 35,471.00	\$ 27,599.85	\$	\$ 1,222,236.18	\$ 913,657.77	\$	\$ 308,578.41
Highway Maintenance	1,816,588.94	9,700,000.00		73,183.76	(772,000.00)	10,817,772.70	9,032,684.47		1,785,088.23
Snow Removal and Sanding	20,086.71	6,818,520.00	1,036,887.00	3,270.89	822,000.00	8,700,764.60	8,518,410.52		182,354.08
Traffic Services	260,147.56	865,000.00	12,711.00	121,613.93		1,259,472.49	961,236.65		298,235.84
	\$ 2,271,988.54	\$18,367,520.00	\$ 1,085,069.00	\$ 225,668.43	\$ 50,000.00	\$22,000,245.97	\$19,425,989.41	\$	\$ 2,574,256.56
Administration	\$ 19,202.41	\$ 1,341,453.00	\$ 44,200.00	\$ 11,029.05	\$ 20,000.00	\$ 1,435,884.46	\$ 1,296,679.15	\$ 88,226.72	\$ 50,978.59
Contingent Expense	235,229.56	332,000.00	40,500.00	4,781.17		612,510.73	297,617.65	219,393.34	95,499.74
Radio Operations	8,223.04	90,289.00		15.00		98,527.04	67,635.00	25,221.32	5,670.72
Salary Increases		70,000.00			(70,000.00)				

