

Maine State Library

**Digital Maine**

---

Transportation Documents

Transportation

---

12-31-2005

## **Traffic Volume Counts, 2005 Annual Report : Franklin County**

Maine Department of Transportation

Follow this and additional works at: [https://digitalmaine.com/mdot\\_docs](https://digitalmaine.com/mdot_docs)

---

# Traffic Volume Counts 2005 Annual Report



**Report Data collected and published by the  
State of Maine  
Department of Transportation  
Traffic Engineering Division  
In cooperation with the  
United States Department of Transportation  
Federal Highway Administration**

## TABLE of CONTENTS

**Forward**

**Continuous Count Program**

**24 Hour Traffic Data Collection Program**

**Description of Headings, Symbols, and Abbreviations**

**Map of State Count Zones**

**Graph of 2005 Weekly Group Mean Factors**

**List of 2005 Weekly Group Mean Factors**

**List of 2005 Weekly Group Mean Factors as a Percent of AADT**

**Traffic Volume Counts by County, Town, and Route**

## FOREWORD

The Department of Transportation, Traffic Engineering Division, and Traffic Monitoring Section is responsible for the collection of all types of traffic data and maintenance of a statewide traffic volume database. The reduction and reporting of traffic volumes and vehicle classification data are accomplished through two types of count programs. They are as follows:

### CONTINUOUS COUNT PROGRAM

Traffic volumes are monitored on a continuous year round basis at forty-three permanent recorder sites located on major highways throughout the State. These hourly counts are collected to produce an average weekday figure, a weekly average day, a monthly average day, and a monthly average weekday. This information is compiled to develop an Annual Average Daily Traffic (AADT) figure for each location. The AADT is computed from the average of the weekly average day totals for the year.

The increasing demand to determine the types of vehicles (e.g. passenger cars, single-unit trucks, and semi's) traveling Maine's highways has prompted the development of a Continuous Classification Program. Currently, the department has eleven locations along routed highways that collect data based on thirteen categories as defined by the Federal Highway Administration. An AADT is computed based on the total volume as well as summary data for individual vehicle types. Future plans include the installation of additional sites statewide over the next several years.

### 24 HOUR TRAFFIC DATA COLLECTION PROGRAM

Between April 1st and November 15th of each year, 24 hour traffic counts (i.e., coverage counts) are gathered to monitor traffic flow and changes in traffic patterns. These counts are generally taken at intersections with major routes and/or other significant roads, Compact Urban Lines (CUL), or Town Lines (TL), or in coordination with ongoing projects or special traffic studies for the Department.

Additionally, 24-hour vehicle classification counts are performed in conjunction with the coverage counts to provide a comprehensive view of traffic along the routed highways.

The State is divided into three count zones:

**ZONE I** : Southwestern Maine to western Penobscot Bay region. This zone includes all of York, Cumberland, Sagadahoc, Lincoln, Knox, and Waldo counties, Oxford county from Albany Twp/Waterboro West & Oxford, Otisfield, as well as Poland, and Mechanic Falls in Androscoggin county.

**ZONE II** : Western/Central Maine and eastern Penobscot Bay region. This zone includes all of Androscoggin except Poland, and Mechanic Falls, Franklin, Kennebec counties, the remainder of Oxford county, Somerset county from Bingham south plus between Flagstaff Lake area and Kennebec River, southern Penobscot county, and western Hancock county.

**ZONE III** : Northern and eastern Maine. This zone includes all of Aroostook, Piscataquis, Washington counties, northern and southeastern Hancock county, Penobscot county from Lagrange north, and the remainder of Somerset county.

These zones are counted on a five year cycle: Zones I and II are counted twice and Zone III once during each five year period. The coverage count program also consists of the “Special Counts” taken each year to satisfy Departmental needs, local requests, and Federal requirements. These include the annual collection of data for the State’s four urbanized areas (BACTS, KACTS, ATRC, and PACTS), Interstate System counts, and data collected from the various traffic studies conducted throughout the year. The 2005 Program included 4524 counts accomplished.

Once the AADT’s have been computed for all of the permanent recorder locations, weekly factors for each station are computed by dividing the AADT by each average weekly figure. Those stations which exhibit similar traffic patterns are assembled and placed into one of three groups:

**URBAN** : Roadways which carry commuter traffic and exhibit little seasonal change in traffic volumes.

**ARTERIAL** : Roadways which carry commuter traffic but exhibit moderate seasonal changes in traffic volumes.

**RECREATIONAL** : Roadways which are heavily influenced by seasonal traffic.

Within each of the three groups, a factor for each week is computed by averaging the weekly factors from each station within the group.

The 2005 Weekly Group Mean Factors were developed by averaging the Weekly Group Mean Factor for 2002, 2003 and 2004. The following pages show the graph of the 2005 Weekly Group Mean Factors, a list of these factors, and the 2005 Weekly Group Mean Factor as a percent of the AADT.

The 24-hour raw data may now be grouped and assigned a factor to produce an AADT. Growth factors for expanding traffic in uncounted zones are developed utilizing data from the permanent recorders and comparing it to the data from the previous year.

The updated AADT's are entered into the Maine Department of Transportation's database to be used by various Departmental employees.

### DESCRIPTION of HEADINGS, SYMBOLS, AND ABBREVIATIONS

The following is a description of the column headings, symbols, and abbreviations used for the Coverage Count Section.

**TOWN**        The town in which a count was taken

**ROUTE**        The road or highway on which the count was taken.

#### Non-Interstate Highways and Roads

---- X indicates a Routed Highway

0196X = SR 196                      0001X = US Route 1

---- A or --- B indicates an Alternate Routed Highway

0001A = US Route 1A    0009B = SR 9B

---- C indicates a Business Route

0001C = Business US Route 1, 1A, or 1B

0025C = Business SR 25

Just a number with no letter OR no numbers or letters indicates a non-routed highway

= Pine Hill Road        00001 = Hubbard Road

01414 = IR 1414        00991 = IR 991 (Biddeford Road)

#### Interstate System

---- X indicates Northbound or Eastbound        0095X = I-95 Northbound        0395X = I-395 Eastbound

---- S indicates Southbound        0095S = I-95 Southbound

---- W indicates Westbound        0395W = I-395 Westbound

**LOCATION**        A description of where the count was taken.

<b>APP = Approach</b>	<b>ART = Arterial</b>	<b>AVE = Avenue</b>	<b>BK = Brook</b>	<b>BLVD = Boulevard</b>
<b>BR = Bridge</b>	<b>CIR = Circle</b>	<b>CL = County Line</b>	<b>CNR = Corner</b>	<b>CONN = Connector</b>
<b>CTR = Center</b>	<b>CUL = Compact Urban Line</b>		<b>CWY = Cause way</b>	<b>CV = Cove</b>
<b>DR = Drive</b>	<b>EB = Eastbound</b>	<b>ENT = Entrance</b>	<b>FT = Fort</b>	<b>HTS = Heights</b>
<b>HWY = Highway</b>	<b>INT'L = International</b>		<b>IR = Inventory Road</b>	<b>LG = Long</b>
<b>LK = Lake</b>	<b>LN = Lane</b>	<b>LWR = Lower</b>	<b>MEM = Memorial</b>	<b>MT = Mount</b>
<b>MTN = Mountain</b>	<b>NB = Northbound</b>	<b>NH = New Hampshire</b>	<b>OW = One Way</b>	<b>PD = Pond</b>
<b>PK = Park</b>	<b>PKWY = Park Way</b>	<b>PL = Place</b>	<b>PT = Point</b>	<b>PW = Private Way</b>
<b>PZ = Plaza</b>	<b>RD = Road</b>	<b>RDG = Ridge</b>	<b>RMP = Ramp</b>	<b>RR = Railroad</b>
<b>RV = River</b>	<b>SB = Southbound</b>	<b>SL = State Line</b>	<b>SQ = Square</b>	<b>SR = State Route</b>
<b>ST = Street</b>	<b>STA = Station</b>	<b>STR = Stream</b>	<b>TER = Terrace</b>	<b>TL = Town Line</b>
<b>TPK = Turnpike</b>	<b>TR = Trail</b>	<b>UPR = Upper</b>	<b>US = United States Route</b>	<b>WB = Westbound</b>

**N/O, NE/O, E/O, etc. = North of, Northeast of, East of, etc.**

<b><u>TYPE</u></b>	<b>Category for each count taken.</b>
<b>A</b>	<b>Permanent Recorder Count</b>
<b>B</b>	<b>BACTS Count</b>
<b>C</b>	<b>Coverage Count</b>
<b>I</b>	<b>Interstate Count</b>
<b>K</b>	<b>KACTS Count</b>
<b>L</b>	<b>ATRC Count (Formerly LACTS)</b>
<b>M</b>	<b>Municipal, Town, Regional Count</b>

**P**            **PACTS Count**  
**S**            **Special Count**  
**T**            **Turning Movement Count**

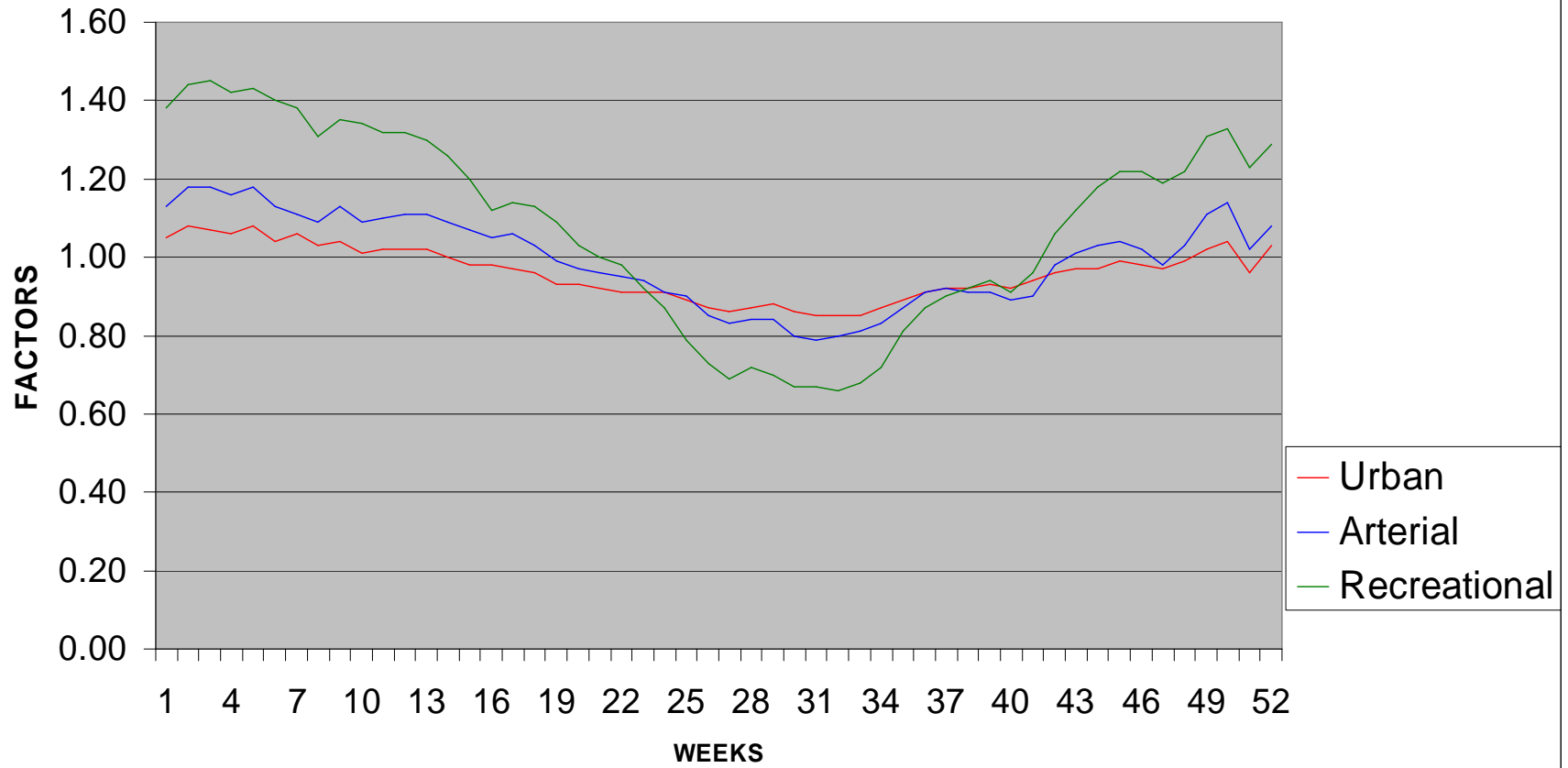
**GROUP**      **The factor group assigned to the location.**

**I**      **Urban Group**            **II**      **Arterial Group**  
**III**      **Recreational Group**    **ATR**    **Permanent Recorder Controlled Group**

**AADT**      **Annual Average Daily Traffic**

# 2005 WEEKLY GROUP FACTORS

AVERAGE: 2002, 2003, 2004





**2005**  
**WEEKLY GROUP MEAN FACTORS**  
**AVERAGE: 2002, 2003, 2004**

			Month	Urban	Arterial	Recreational	Year
Month	Start Date	Dates	Week #	Group I	Group II	Group III	Week #
Jan/Feb	(2)	3,4,5,6,7	1	1.05	1.13	1.38	1
	(9)	10,11,12,13,14	2	1.08	1.18	1.44	2
	(16)	17,18,19,20,21	3	1.07	1.18	1.45	3
	(23)	24,25,26,27,28	4	1.06	1.16	1.42	4
	(30)	31,1,2,3,4	5	1.08	1.18	1.43	5
Feb/Mar	(6)	7,8,9,10,11	1	1.04	1.13	1.40	6
	(13)	14,15,16,17,18	2	1.06	1.11	1.38	7
	(20)	21,22,23,24,25	3	1.03	1.09	1.31	8
	(27)	28,1,2,3,4	4	1.04	1.13	1.35	9
Mar/Apr	(6)	7,8,9,10,11	1	1.01	1.09	1.34	10
	(13)	14,15,16,17,18	2	1.02	1.10	1.32	11
	(20)	21,22,23,24,25	3	1.02	1.11	1.32	12
	(27)	28,29,30,31,1	4	1.02	1.11	1.30	13
April	(3)	4,5,6,7,8	1	1.00	1.09	1.26	14
	(10)	11,12,13,14,15	2	0.98	1.07	1.20	15
	(17)	18,19,20,21,22	3	0.98	1.05	1.12	16
	(24)	25,26,27,28,29	4	0.97	1.06	1.14	17
May/Jun	(1)	2,3,4,5,6	1	0.96	1.03	1.13	18
	(8)	9,10,11,12,13	2	0.93	0.99	1.09	19
	(15)	16,17,18,19,20	3	0.93	0.97	1.03	20
	(22)	23,24,25,26,27	4	0.92	0.96	1.00	21
	(29)	30,31,1,2,3	5	0.91	0.95	0.98	22
Jun/Jul	(5)	6,7,8,9,10	1	0.91	0.94	0.92	23
	(12)	13,14,15,16,17	2	0.91	0.91	0.87	24
	(19)	20,21,22,23,24	3	0.89	0.90	0.79	25
	(26)	27,28,29,30,1	4	0.87	0.85	0.73	26
Jul/Aug	(3)	4,5,6,7,8	1	0.86	0.83	0.69	27
	(10)	11,12,13,14,15	2	0.87	0.84	0.72	28
	(17)	18,19,20,21,22	3	0.88	0.84	0.70	29

	(24)	25,26,27,28,29	4	0.86	0.80	0.67	30
	(31)	1,2,3,4,5	5	0.85	0.79	0.67	31
Aug/Sep	(7)	8,9,10,11,12	1	0.85	0.80	0.66	32
	(14)	15,16,17,18,19	2	0.85	0.81	0.68	33
	(21)	22,23,24,25,26	3	0.87	0.83	0.72	34
	(28)	29,30,31,1,2	4	0.89	0.87	0.81	35
September	(4)	5,6,7,8,9	1	0.91	0.91	0.87	36
	(11)	12,13,14,15,16	2	0.92	0.92	0.90	37
	(18)	19,20,21,22,23	3	0.92	0.91	0.92	38
	(25)	26,27,28,29,30	4	0.93	0.91	0.94	39
Oct/Nov	(2)	3,4,5,6,7	1	0.92	0.89	0.91	40
	(9)	10,11,12,13,14	2	0.94	0.90	0.96	41
	(16)	17,18,19,20,21	3	0.96	0.98	1.06	42
	(23)	24,25,26,27,28	4	0.97	1.01	1.12	43
	(30)	31,1,2,3,4	5	0.97	1.03	1.18	44
Nov/Dec	(6)	7,8,9,10,11	1	0.99	1.04	1.22	45
	(13)	14,15,16,17,18	2	0.98	1.02	1.22	46
	(20)	21,22,23,24,25	3	0.97	0.98	1.19	47
	(27)	28,29,30,1,2	4	0.99	1.03	1.22	48
December	(4)	5,6,7,8,9	1	1.02	1.11	1.31	49
	(11)	12,13,14,15,16	2	1.04	1.14	1.33	50
	(18)	19,20,21,22,23	3	0.96	1.02	1.23	51
	(25)	26,27,28,29,30	4	1.03	1.08	1.29	52

**2005  
WEEKLY GROUP MEAN FACTORS  
AVERAGE: 2002, 2003, 2004  
AS PERCENT OF AADT**

			Month	Urban	Arterial	Recreational	Year
Month	Start Date	Dates	Week #	Group I	Group II	Group III	Week #
Jan/Feb	(2)	3,4,5,6,7	1	95.24	88.50	72.46	1
	(9)	10,11,12,13,14	2	92.59	84.75	69.44	2
	(16)	17,18,19,20,21	3	93.46	84.75	68.97	3

	(23)	24,25,26,27,28	4	94.34	86.21	70.42	4
	(30)	31,1,2,3,4	1	92.59	84.75	69.93	5
Feb/Mar	(6)	7,8,9,10,11	2	96.15	88.50	71.43	6
	(13)	14,15,16,17,18	3	94.34	90.09	72.46	7
	(20)	21,22,23,24,25	4	97.09	91.74	76.34	8
	(27)	28,1,2,3,4	5	96.15	88.50	74.07	9
Mar/Apr	(6)	7,8,9,10,11	1	99.01	91.74	74.63	10
	(13)	14,15,16,17,18	2	98.04	90.91	75.76	11
	(20)	21,22,23,24,25	3	98.04	90.09	75.76	12
	(27)	28,29,30,31,1	4	98.04	90.09	76.92	13
April	(3)	4,5,6,7,8	1	100.00	91.74	79.37	14
	(10)	11,12,13,14,15	2	102.04	93.46	83.33	15
	(17)	18,19,20,21,22	3	102.04	95.24	89.29	16
	(24)	25,26,27,28,29	4	103.09	94.34	87.72	17
May/June	(1)	2,3,4,5,6	1	104.17	97.09	88.50	18
	(8)	9,10,11,12,13	2	107.53	101.01	91.74	19
	(15)	16,17,18,19,20	3	107.53	103.09	97.09	20
	(22)	23,24,25,26,27	4	108.70	104.17	100.00	21
	(29)	30,31,1,2,3	5	109.89	105.26	102.04	22
Jun/Jul	(5)	6,7,8,9,10	1	109.89	106.38	108.70	23
	(12)	13,14,15,16,17	2	109.89	109.89	114.94	24
	(19)	20,21,22,23,24	3	112.36	111.11	126.58	25
	(26)	27,28,29,30,1	4	114.94	117.65	136.99	26
Jul/Aug	(3)	4,5,6,7,8	1	116.28	120.48	144.93	27
	(10)	11,12,13,14,15	2	114.94	119.05	138.89	28
	(17)	18,19,20,21,22	3	113.64	119.05	142.86	29
	(24)	25,26,27,28,29	4	116.28	125.00	149.25	30
	(31)	1,2,3,4,5	1	117.65	126.58	149.25	31
Aug/Sep	(7)	8,9,10,11,12	2	117.65	125.00	151.52	32
	(14)	15,16,17,18,19	3	117.65	123.46	147.06	33
	(21)	22,23,24,25,26	4	114.94	120.48	138.89	34
	(28)	29,30,31,1,2	5	112.36	114.94	123.46	35
September	(4)	5,6,7,8,9	1	109.89	109.89	114.94	36
	(11)	12,13,14,15,16	2	108.70	108.70	111.11	37
	(18)	19,20,21,22,23	3	108.70	109.89	108.70	38
	(25)	26,27,28,29,30	4	107.53	109.89	106.38	39
Oct/Nov	(2)	3,4,5,6,7	1	108.70	112.36	109.89	40

	(9)	10,11,12,13,14	2	106.38	111.11	104.17	41
	(16)	17,18,19,20,21	3	104.17	102.04	94.34	42
	(23)	24,25,26,27,28	4	103.09	99.01	89.29	43
	(30)	31,1,2,3,4	5	103.09	97.09	84.75	44
Nov/Dec	(6)	7,8,9,10,11	1	101.01	96.15	81.97	45
	(13)	14,15,16,17,18	2	102.04	98.04	81.97	46
	(20)	21,22,23,24,25	3	103.09	102.04	84.03	47
	(27)	28,29,30,1,2	4	101.01	97.09	81.97	48
December	(4)	5,6,7,8,9	1	98.04	90.09	76.34	49
	(11)	12,13,14,15,16	2	96.15	87.72	75.19	50
	(18)	19,20,21,22,23	3	104.17	98.04	81.30	51
	(25)	26,27,28,29,30	4	97.09	92.59	77.52	52

# 2005 Maine Transportation Count Book

County

Franklin

TOWN	STATION	ROAD	LOCATION	TYPE	GROUP	AADT01	AADT02	AADT03	AADT04	AADT05
07 ALDER STREAM TWP	30600	0027X	SR 27 @ CHAIN OF PONDS TWP TL @BR# 3135	C	III	.	.	850	.	.
07 AVON	45705	0004X	SR 4 S/O IR 1165	C	I	2860	.	2440	.	.
07 AVON	45708	0004X	SR 4 NW/O IR 1165	C	I+II	2110	.	.	.	.
07 AVON	50604	0004X	SR 4 SE/O IR 350 (AVON VALLEY) @BR# 2890	C	I+II	2430	.	.	.	.
07 AVON	45702	01165	IR 1165 (PLEASANT ST) NE/O SR 4	C	I	.	.	640	.	.
07 CARRABASSETT VALLEY	31000	0016X	SR 16/27 @ BR# 5349 (1.0 MI E/O IR 2053)	C	ATR34304	.	.	3100	.	.
07 CARRABASSETT VALLEY	33700	0016X	SR 16/27 @ WYMAN TWP TL	C	ATR34304	2280	.	2720	.	.
07 CARRABASSETT VALLEY	33808	0016X	SR 16/27 NW/O IR 2045(SGRLOAF) @BR# 5346	C	ATR34304	2120	.	.	.	.
07 CARRABASSETT VALLEY	34004	0016X	SR 16/27 SE/O IR 306 (CARRAGE RD)	C	ATR34304	2580	.	3140	.	.
07 CARRABASSETT VALLEY	34100	0016X	SR 16/27 @ KINGFIELD TL	C	ATR34304	2820	.	3340	.	.
07 CARRABASSETT VALLEY	34002	00306	IR 306 (CARRAGE) NE/O SR 16/27 @BR# 0379	C	ATR34304	500	.	480	.	.
07 CARRABASSETT VALLEY	33806	02045	IR 2045 (SUGARLOAF ACCESS) SW/O SR 16/27	C	ATR34304	1600	.	.	.	.
07 CARTHAGE	36508	00369	IR 369 (WESTSIDE RD) NW/O SR 142	C	III	.	.	410	.	.
07 CARTHAGE	33900	00384	IR 384 (WEBB RIVER RD) @ BR# 0589	C	II	.	210	.	.	.
07 CARTHAGE	56507	00584	IR 584(GROVER BR RD)W/O SR 142 @BR# 6137	C	I	70	.	.	.	.
07 CARTHAGE	30103	00586	IR 586 (MAIN ST) E/O SR 142	C	I	.	.	130	.	.
07 CARTHAGE	55601	00601	IR 601 (SMITH) N/O US 2/SR 17 @ BR# 0424	C	I	60	.	.	.	.
07 CARTHAGE	36504	01128	IR 1128 (STORER HILL RD) SE/O SR 142	C	III	.	.	180	.	.
07 CARTHAGE	30107	0142X	SR 142 W/O IR 586 (MAIN ST)	C	II+III	.	.	1350	.	.
07 CARTHAGE	36502	0142X	SR 142 NE/O IR 369 (WESTSIDE RD)	C	III	900	.	960	.	.
07 CARTHAGE	36507	0142X	SR 142 W/O IR 369 (WESTSIDE RD)	C	II+III	1100	.	1340	.	.
07 CARTHAGE	54101	0142X	SR 142 N/O IR 381 (POTTER HILL RD)	C	III	.	.	2920	.	.
07 CARTHAGE	56501	0142X	SR 142 N/O IR 584(GROVER BR RD)@BR# 2610	C	II+III	.	.	1500	.	.
07 CHAIN OF PONDS TWP	31700	0027X	SR 27 @ BR# 3270	C	III	.	.	780	.	.
07 CHAIN OF PONDS TWP	55204	0027X	SR 27 SE/O IR 1480	C	II+III	940	.	.	.	.
07 CHAIN OF PONDS TWP	55208	0027X	SR 27 NW/O IR 1480	C	II+III	900	.	.	.	.
07 CHESTERVILLE	46604	0041X	SR 41 SE/O IR 2022 (CROSS RD)	C	I	.	.	1360	.	.
07 CHESTERVILLE	38006	00465	IR 465 (RIDGE) SW/O IR 504 @ FAYETTE TL	C	I	.	.	430	.	.
07 CHESTERVILLE	38104	00465	IR 465 (RIDGE RD) SE/O IR 468(DUTCH GAP)	C	I	890	.	1060	.	.
07 CHESTERVILLE	38108	00465	IR 465 (ZION HILL) NW/O IR 468 @BR# 5180	C	I	.	.	650	.	.
07 CHESTERVILLE	38101	00468	IR 468 (DUTCH GAP RD) N/O IR 465 (RIDGE)	C	I	.	.	860	.	.
07 CHESTERVILLE	37306	00492	IR 492 (EAST JAY) SW/O IR 496 @ JAY TL	C	I	.	.	230	.	.
07 CHESTERVILLE	36608	00496	IR 496 (SOULES HILL) NW/O IR 499 @JAY TL	C	I	.	.	510	.	.
07 CHESTERVILLE	37304	00496	IR 496 (SOULES HILL) SE/O IR 492	C	I	.	.	360	.	.

## 2005 Maine Transportation Count Book

Franklin

TOWN	STATION	ROAD	LOCATION	TYPE	GROUP	AADT01	AADT02	AADT03	AADT04	AADT05
07 CHESTERVILLE	46605	00503	IR 503 (CHESTERVILLE HILL) S/O IR 2022	C	I	.	.	480	.	.
07 CHESTERVILLE	49703	00511	IR 511 (NORCROSS HILL) E/O IR 465(RIDGE)	C	I	.	.	450	.	.
07 CHESTERVILLE	46705	00621	IR 621 (POPE RD) S/O SR 156	C	I	.	.	880	.	.
07 CHESTERVILLE	38700	0156X	SR 156 @ FARMINGTON TL @ BR# 3066	C	I	.	.	2360	.	.
07 CHESTERVILLE	38707	0156X	SR156 W/O IR933(LOCKE PD)@FARMINGTON TL	C	I	1830	.	2070	.	.
07 CHESTERVILLE	46606	0156X	SR 156 SW/O IR 503	C	I	.	.	3340	.	.
07 CHESTERVILLE	46608	0156X	SR 156 NW/O IR 430@FARMINGTON TL@BR#2273	C	I	.	.	3930	.	.
07 CHESTERVILLE	38704	02003	IR 2003 (ZION HILL) SE/O IR 468 (VALLEY)	C	I	.	.	720	.	.
07 COBURN GORE TWP	30003	0027X	SR 27 1.0 MI E/O US CUSTOMS	C	II+III	1000	.	.	.	.
07 COPLIN PLT	31407	0016X	SR 16 W/O IR 534 (KENNEBAGO RD)	C	II+III	.	.	670	.	.
07 COPLIN PLT	55400	0016X	SR 16/27 @ WYMAN TWP TL	C	ATR34304	2200	.	.	.	.
07 COPLIN PLT	31408	00534	IR 534 (KENNEBAGO RD) NW/O SR 16	C	III	.	.	210	.	.
07 DALLAS PLT	31605	0016X	SR 16 S/O IR 550 (REDINGTON RD) @BR#3261	C	II+III	1000	.	850	.	.
07 DALLAS PLT	31608	0016X	SR 16 NW/O IR 550 (REDINGTON RD)	C	II+III	880	.	680	.	.
07 DALLAS PLT	31603	02047	IR 550 (REDINGTON RD) E/O SR 16	C	III	.	.	170	.	.
07 EUSTIS	31104	0016X	SR 16/27 SE/O SR 27 @ BR# 5341	C	I+II	3300	.	3150	.	.
07 EUSTIS	31106	0016X	SR 16 SW/O SR 27 @ BR# 3262	C	II+III	810	.	910	.	.
07 EUSTIS	31305	0016X	SR 16/27 S/O IR 716	C	I+II	.	.	2720	.	.
07 EUSTIS	30704	0027X	SR 27 SE/O IR 1506 (PW) @ BR# 2856	C	III	.	.	1230	.	.
07 EUSTIS	30905	0027X	SR 27 S/O IR 526 (EUSTIS RIDGE RD)	C	III	1910	.	1810	.	.
07 EUSTIS	31101	0027X	SR 27 N/O SR 16/27	C	II+III	2270	.	.	.	.
07 EUSTIS	31108	0027X	SR 27 NW/O SR 16/27	C	III	.	.	2090	.	.
07 EUSTIS	30907	00526	IR 526 (EUSTIS RIDGE RD) W/O SR 27	C	III	.	.	340	.	.
07 EUSTIS	31202	01078	IR 1078 NE/O IR 720	C	III	350	.	440	.	.
07 EUSTIS	31206	01078	IR 1078 (OLD DEAD RIVER RD) SW/O IR 720	C	II	400	.	.	.	.
07 EUSTIS	31803	01100	IR 1100 (FLAGSTAFF) E/O SR 27 @ BR# 2616	C	III	.	.	120	.	.
07 EUSTIS	30706	01506	(PW) IR 1506 SW/O SR 27	C	II	180	.	.	.	.
07 FARMINGTON	00202	0002X	US 2/SR 4 (WATER ST) NE/O SR 133	C	I	.	.	17330	.	.
07 FARMINGTON	00206	0002X	US 2/SR 4 (WATER ST) SW/O SR 133	C	I	13690	.	14000	.	.
07 FARMINGTON	00301	0002X	US 2/SR 4 (WATER ST) N/O OAKES ST	C	I	.	.	18050	.	.
07 FARMINGTON	00401	0002X	US 2/SR 4 N/O KNOWLTON CNR RD	C	I	18490	.	.	.	.
07 FARMINGTON	01408	0002X	US 2/SR 27 (LWR MAIN) NW/O MAPLE ST	C	I	.	.	10520	.	.
07 FARMINGTON	01603	0002X	US 2/SR 27 E/O HIGH ST @ BR	C	II	8870	.	.	.	.
07 FARMINGTON	01607	0002X	US 2/SR 27 (S MAIN ST) W/O HIGH ST	C	I	8260	.	7420	.	.

## 2005 Maine Transportation Count Book

Franklin

TOWN	STATION	ROAD	LOCATION	TYPE	GROUP	AADT01	AADT02	AADT03	AADT04	AADT05
07 FARMINGTON	05005	0002X	US 2/SR 4 (WATER ST) S/O BACK FALLS RD	C	I	.	.	19320	.	.
07 FARMINGTON	06204	0002X	US 2/SR 27 SE/O DAVIS RD	C	ATR36907	.	.	9260	.	.
07 FARMINGTON	46508	0002X	US 2/SR 27 NW/O IR 2049 (PHILBRICK ST)	C	ATR36907	.	.	6060	.	.
07 FARMINGTON	00608	0004X	SR 4 NW/O TOWN FARM RD	C	I	3860	.	3910	.	.
07 FARMINGTON	02106	0004X	SR 4/27/43 (INTERVALE RD) SW/O FRONT ST	C	I	15520	.	16060	.	.
07 FARMINGTON	02208	0004X	SR 4/27/43 (MAIN ST) NW/O PRESCOTT ST	C	I	12350	.	.	.	.
07 FARMINGTON	03304	0004X	SR 4/27/43 (UPPER MAIN ST) SE/O BROADWAY	C	I	10720	.	10390	.	.
07 FARMINGTON	03308	0004X	SR 4/27 (UPPER MAIN ST) NW/O BROADWAY	C	I	9060	.	.	.	.
07 FARMINGTON	03508	0004X	SR 4/27 (UPPER MAIN ST) NW/O PLEASANT ST	C	I	8510	.	7710	.	.
07 FARMINGTON	05105	0004X	SR 4/27 (FAIRBANKS RD) S/O SR 27	S	I	6000	.	5860	.	.
07 FARMINGTON	05108	0004X	SR 4 (FAIRBANKS RD) NW/O SR 27	S	I	.	.	3390	.	.
07 FARMINGTON	05207	0004X	SR 4 (FAIRBANKS RD) W/O SR 149	C	I	3110	.	3030	.	.
07 FARMINGTON	30400	0004X	SR 4 @ STRONG TL	C	I	.	.	3600	.	.
07 FARMINGTON	05102	0027X	SR 27 NE/O SR 4/27 (FAIRBANKS RD)	S	ATR57300	4360	.	4830	.	.
07 FARMINGTON	41802	0027X	SR 27 NE/O IR 411 @ NEW VINEYARD TL	C	ATR57300	3720	.	3780	.	.
07 FARMINGTON	39901	00357	IR 357 (CLOVER MILL RD) N/O SR 43	C	I	280	.	260	.	.
07 FARMINGTON	41808	00411	IR 411 NW/O SR 27 @ NEW VINEYARD TL	C	II	.	.	340	.	.
07 FARMINGTON	00706	00414	IR 414(POTTER RD) SW/O IR 419(TOWN FARM)	C	I	.	.	580	.	.
07 FARMINGTON	03902	00415	ANSON ST NE/O NORTH ST	C	I	.	.	1070	.	.
07 FARMINGTON	05803	00417	HOLLY RD E/O SR 4/27 (FAIRBANKS RD)	C	I	.	.	630	.	.
07 FARMINGTON	01003	00418	WEEKS MILLS RD E/O SR 43 (ALLENS MILLS)	C	I	.	.	430	.	.
07 FARMINGTON	00701	00419	IR 419 (TOWN FARM RD) N/O IR 414(POTTER)	C	I	3880	.	3680	.	.
07 FARMINGTON	00705	00419	IR 419 (TOWN FARM RD) S/O IR 414(POTTER)	C	I	3670	.	.	.	.
07 FARMINGTON	05500	00422	MAPLE AVE @ CASCADE BROOK @ CUL	C	I	.	.	620	.	.
07 FARMINGTON	00805	00438	MORRISON HILL RD S/O SR 43 (MILL) @ BR	C	I	.	.	1060	.	.
07 FARMINGTON	00107	0043X	SR 43 (BRIDGE ST) W/O WATER ST #2	C	I	.	.	3840	.	.
07 FARMINGTON	00908	0043X	SR 43 (TEMPLE ST) NW/O MARVEL RD	C	I	1650	.	1660	.	.
07 FARMINGTON	01002	0043X	SR 43 (ALLENS MILLS) NE/O WEEKS MILLS RD	C	I	2200	.	2580	.	.
07 FARMINGTON	01006	0043X	SR 43 SW/O WEEKS MILLS RD	C	I	2540	.	.	.	.
07 FARMINGTON	02700	0043X	SR 43 (PERHAM ST) @ CUL	C	I	2340	.	.	.	.
07 FARMINGTON	02802	0043X	SR 43 (PERHAM ST) NE/O NORTH ST	C	I	3180	.	3480	.	.
07 FARMINGTON	03202	0043X	SR 43 (PERHAM ST) NE/O HIGH ST	C	I	.	.	4890	.	.
07 FARMINGTON	03302	0043X	SR 43(BROADWAY) NE/O SR 4/27(UPPER MAIN)	C	I	6010	.	6040	.	.
07 FARMINGTON	03806	0043X	SR 43 (INDUSTRY RD) SW/O MIDDLE ST	C	I	.	.	2190	.	.

## 2005 Maine Transportation Count Book

Franklin

TOWN	STATION	ROAD	LOCATION	TYPE	GROUP	AADT01	AADT02	AADT03	AADT04	AADT05
07 FARMINGTON	38807	0043X	SR 43 W/O IR 691 (RUSSELL HILL RD)	C	I	.	.	1210	.	.
07 FARMINGTON	39903	0043X	SR 43(TEMPLE) E/O IR 357(CLOVER MILL RD)	C	I	.	.	1610	.	.
07 FARMINGTON	39907	0043X	SR 43 W/O IR 357 (CUMMINGS HILL RD) @ BR	C	I	.	.	1360	.	.
07 FARMINGTON	01200	00459	WEBSTER RD @BR#0416 (0.7 MI SE/O IR 460)	C	I	160	.	.	.	.
07 FARMINGTON	38600	00459	IR 459 (WEBSTER RD) @ WILTON TL	C	I	100	.	.	.	.
07 FARMINGTON	00404	00460	KNOWLTON CNR RD SE/O US 2/SR 4	C	I	1480	.	1560	.	.
07 FARMINGTON	05004	00463	BACK FALLS RD SE/O US 2 (WATER ST)	C	I	2430	.	2710	.	.
07 FARMINGTON	37508	00463	IR 463 (WHITTIER RD) NW/O SR 156	C	I	.	.	1000	.	.
07 FARMINGTON	03805	00980	MIDDLE ST S/O SR 43 (INDUSTRY RD)	C	I	.	.	580	.	.
07 FARMINGTON	38708	01069	IR 1069 (KNOWLTON CNR RD) NW/O SR 156	C	I	810	.	840	.	.
07 FARMINGTON	00205	0133X	SR 133 S/O US 2/SR 4 (WATER ST)	C	I	2260	.	3340	.	.
07 FARMINGTON	05208	0149X	SR 149 NW/O SR 4 (FAIRBANKS RD)	C	I	740	.	710	.	.
07 FARMINGTON	50300	0149X	SR 149 @ STRONG TL	C	I	410	.	450	.	.
07 FARMINGTON	38702	0156X	SR 156 NE/O IR 1069 (KNOWLTON CNR RD)	C	I	1730	.	1960	.	.
07 FARMINGTON	06202	02010	DAVIS RD NE/O US 2/SR 27	C	I	.	.	450	.	.
07 FARMINGTON	03402	10002	ANSON ST NE/O SR 4/27 (UPPER MAIN ST)	C	I	.	.	1810	.	.
07 FARMINGTON	03306	10006	BROADWAY SW/O SR 4/27 (UPPER MAIN ST)	C	I	2480	.	2620	.	.
07 FARMINGTON	02108	10018	FRONT ST NW/O SR 4/27/43 (INTERVALE RD)	C	I	3980	.	4110	.	.
07 FARMINGTON	01608	10021	HIGH ST NW/O US 2/SR 27 (MAIN ST)	C	I	2190	.	2620	.	.
07 FARMINGTON	01904	10021	HIGH ST SE/O MAPLE AVE	C	I	3320	.	3790	.	.
07 FARMINGTON	01908	10021	HIGH ST NW/O MAPLE AVE	C	I	3860	.	4490	.	.
07 FARMINGTON	02504	10021	HIGH ST SE/O SOUTH ST	C	I	.	.	4760	.	.
07 FARMINGTON	02508	10021	HIGH ST NW/O LINCOLN ST	C	I	4650	.	.	.	.
07 FARMINGTON	03204	10021	HIGH ST SE/O SR 43 (PERHAM ST)	C	I	.	.	4280	.	.
07 FARMINGTON	03208	10021	HIGH ST NW/O SR 43 (PERHAM ST)	C	I	2030	.	2680	.	.
07 FARMINGTON	01401	10026	PRESCOTT ST N/O MAPLE ST	C	I	410	.	.	.	.
07 FARMINGTON	02204	10026	PRESCOTT ST SE/O SR 4/27/43 (MAIN ST)	C	I	.	.	760	.	.
07 FARMINGTON	01402	10027	MAPLE AVE NE/O PRESCOTT ST	C	I	1850	.	2080	.	.
07 FARMINGTON	01902	10027	MAPLE AVE NE/O HIGH ST	C	I	1130	.	1360	.	.
07 FARMINGTON	01906	10027	MAPLE AVE SW/O HIGH ST	C	I	1740	.	.	.	.
07 FARMINGTON	02902	10028	MIDDLE ST NE/O QUEBEC ST	C	I	1860	.	2240	.	.
07 FARMINGTON	03002	10028	MIDDLE ST NE/O HIGH ST	C	I	.	.	3250	.	.
07 FARMINGTON	02808	10029	NORTH ST NW/O SR 43 (PERHAM ST)	C	I	.	.	950	.	.
07 FARMINGTON	00308	10031	OAKES ST NW/O US 2/SR 4 (WATER ST)	C	I	.	.	5040	.	.



## 2005 Maine Transportation Count Book

Franklin

TOWN	STATION	ROAD	LOCATION	TYPE	GROUP	AADT01	AADT02	AADT03	AADT04	AADT05
07 FARMINGTON	03506	10037	PLEASANT ST SW/O SR 4/27 (MAIN ST)	C	I	100	.	.	.	.
07 FARMINGTON	04100	10052	WINTER ST @ CUL	C	I	4230	.	4430	.	.
07 FREEMAN TWP	49108	01076	IR 1076 (W FREEMAN RD) NW/O IR 330	C	I	240	.	250	.	.
07 FREEMAN TWP	34602	0142X	SR 142 NE/O SR 145	C	I	1240	.	1200	.	.
07 FREEMAN TWP	34607	0142X	SR 142 W/O SR 145	C	I	830	.	890	.	.
07 FREEMAN TWP	34605	0145X	SR 145 S/O SR 142	C	I	360	.	430	.	.
07 FREEMAN TWP	49208	0145X	SR 145 NW/O IR 339 (ROY COOK RD)	C	I	670	.	760	.	.
07 INDUSTRY	41301	00389	IR 389 (BOBBY HILL RD) N/O SR 148	C	I	.	.	240	.	.
07 INDUSTRY	41403	0043X	SR 43 (STARKS RD) E/O SR 148	C	I	800	.	.	.	.
07 INDUSTRY	41407	0043X	SR 43 (STARKS RD) W/O SR 148	C	I	1470	.	.	.	.
07 INDUSTRY	41502	0043X	SR 43 (STARKS RD) NE/O IR 1194	C	I	1630	.	.	.	.
07 INDUSTRY	41506	0043X	SR 43 (ALLENS MILL) SW/O IR 426 (SAVAGE)	C	I	1610	.	.	.	.
07 INDUSTRY	41303	0148X	SR 148 E/O IR 389 (BOBBY HILL RD)	C	II	340	.	.	.	.
07 INDUSTRY	41307	0148X	SR 148 W/O IR 389 (BOBBY HILL) @BR# 5046	C	I	.	.	630	.	.
07 INDUSTRY	41401	0148X	SR 148 N/O SR 43 (STARKS RD)	C	II	800	.	.	.	.
07 INDUSTRY	51403	0148X	SR 148 E/O IR 408 @BR# 0357	C	II	500	.	.	.	.
07 JAY	00205	0004X	SR 4 (MAIN ST) S/O CHURCH ST #2	C	I	11050	.	.	.	.
07 JAY	00305	0004X	SR 4/17 (MAIN ST) S/O JEWELL ST	C	I	.	.	9890	.	.
07 JAY	00608	0004X	SR 4/17 (MAIN ST) NW/O LUDDEN DR	C	I	.	.	11070	.	.
07 JAY	02201	0004X	SR 4/17 (MAIN ST) N/O PINEAU ST	C	I	10110	.	10220	.	.
07 JAY	02305	0004X	SR 4/17 S/O SUMMIT AVE	C	I	10300	.	.	.	.
07 JAY	02605	0004X	SR 4/17(MAIN) S/O OLD JAY HILL RD(S JCT)	C	I	.	.	10020	.	.
07 JAY	02704	0004X	SR 4/17 (MAIN ST) SE/O RILEY RD	C	I	11800	.	11770	.	.
07 JAY	02708	0004X	SR 4/17 (MAIN ST) NW/O SR 140	C	I	.	.	10830	.	.
07 JAY	37401	0004X	SR 4 N/O SR 17	C	I	.	.	8350	.	.
07 JAY	37405	0004X	SR 4/17 S/O IR 605(OLD JAY HILL)(N JCT)	C	I	9290	.	8930	.	.
07 JAY	53601	0004X	SR 4 N/O IR 1676(ROLLING RDG) @WILTON TL	S	I	6450	.	6400	.	.
07 JAY	53805	0004X	SR 4 S/O IR 1153 (MAXWELL RD)	C	I	.	.	8460	.	.
07 JAY	37204	0017X	SR 17 SE/O IR 472 (MORSE HILL RD)	C	I	.	.	1510	.	.
07 JAY	37208	0017X	SR 17 NW/O IR 472 (MORSE HILL RD)	C	I	1110	.	.	.	.
07 JAY	37408	0017X	SR 17 NW/O SR 4 @BR# 2040	C	I	.	.	2150	.	.
07 JAY	37101	00469	IR 469 (KEEP RD) N/O SR 17	C	I	.	.	290	.	.
07 JAY	37207	00472	IR 472 (MORSE HILL) W/O SR 17 @ BR# 0417	C	I	.	.	540	.	.
07 JAY	01306	00483	CRASH RD SW/O RILEY RD	C	I	3210	.	3070	.	.

# 2005 Maine Transportation Count Book

County

Franklin

TOWN		STATION	ROAD	LOCATION	TYPE	GROUP	AADT01	AADT02	AADT03	AADT04	AADT05
07	JAY	37907	00488	IR 488 (MACOMBER HILL RD) W/O SR 133	C	I	430	.	570	.	.
07	JAY	01208	00491	LOMIE RIVERS RD NW/O SR 133 (CHURCH ST)	C	I	.	.	380	.	.
07	JAY	00503	00492	E JAY RD E/O SR 133 (CHURCH ST)	C	I	1030	.	1260	.	.
07	JAY	00504	00493	CLAY BROOK RD SE/O SR 133 (CHURCH ST)	C	I	.	.	640	.	.
07	JAY	00402	00594	ELM ST NE/O SR 4/17 (MAIN ST)	C	I	.	.	330	.	.
07	JAY	01107	00594	ELM ST W/O BELLEVIEW DR	C	I	.	.	310	.	.
07	JAY	01901	00600	KNAPP ST N/O CHURCH ST #2	C	I	.	.	470	.	.
07	JAY	02602	00605	OLD JAY HILL RD NE/O SR 4/17	C	I	.	.	1030	.	.
07	JAY	37404	00605	IR 605 (OLD JAY HILL RD) SE/O SR 4/17	C	I	.	.	590	.	.
07	JAY	00107	00613	JEWELL ST W/O SR 133 (CHURCH ST)	C	I	.	.	1000	.	.
07	JAY	00303	00613	JEWELL ST E/O SR 4/17 (MAIN ST)	C	I	1940	.	.	.	.
07	JAY	01308	00743	RILEY RD NW/O CRASH RD	C	I	4770	.	4240	.	.
07	JAY	02706	00743	RILEY RD SW/O SR 4/17 (MAIN ST)	C	I	6150	.	6350	.	.
07	JAY	02203	01049	PINEAU ST E/O SR 4/17 (MAIN ST)	C	I	.	.	450	.	.
07	JAY	00105	0133X	SR 133(CHURCH) S/O JEWELL @LVRMRE FLS TL	C	I	2870	.	3330	.	.
07	JAY	00705	0133X	SR 133 (CHURCH ST) S/O OSGOOD RD	C	I	.	.	3200	.	.
07	JAY	37901	0133X	SR 133 N/O IR 488 (MACOMBER HILL RD)	C	I	2440	.	.	.	.
07	JAY	37905	0133X	SR 133 S/O IR 488 (MACOMBER HILL RD)	C	I	2380	.	2980	.	.
07	JAY	38305	0133X	SR 133 S/O SR 156	C	I	2010	.	2950	.	.
07	JAY	01005	01406	BELLEVIEW DR S/O HIGHLAND RD	C	I	.	.	390	.	.
07	JAY	01401	01406	DROTTAR ST N/O JEWELL ST	C	I	.	.	470	.	.
07	JAY	00907	01407	HILLSDALE RD W/O SR 133 (CHURCH ST)	C	I	.	.	160	.	.
07	JAY	02404	0140X	SR 140 SE/O BJ'S LN	C	I	2830	.	2830	.	.
07	JAY	02707	0140X	SR 140 W/O SR 4/17 (MAIN ST)	C	I	.	.	2600	.	.
07	JAY	49903	0140X	SR 140 E/O IR 474 (DAVENPORT HILL RD)	C	I	2410	.	.	.	.
07	JAY	38303	0156X	SR 156 E/O SR 133	C	I	1500	.	2170	.	.
07	JAY	38307	0156X	SR 156 W/O SR 133	C	I	1050	.	1470	.	.
07	JAY	00807	01600	HIGHLAND RD W/O SR 133 (CHURCH ST)	C	I	.	.	340	.	.
07	JIM POND TWP	30504	0027X	SR 27 SE/O IR 1154	C	III	.	.	840	.	.
07	KINGFIELD	34304	0016X	SR 16/27 SE/O IR 307 (TUFTS POND RD)	A	ATR34304	3020	3110	3190	3190	3250
07	KINGFIELD	32204	0016X	SR 16 SE/O IR 700		II	.	.	2070	.	.
07	KINGFIELD	34301	0016X	SR 16/27 N/O IR 307 (TUFTS POND RD)	C	ATR34304	2810	.	3450	.	.
07	KINGFIELD	34404	0016X	SR 16/27 SE/O IR 310 (WEST KINGFIELD RD)	C	ATR34304	5240	.	.	.	.
07	KINGFIELD	34500	0016X	SR 16 @ LEXINGTON TWP TL	C	II	.	.	1480	.	.

## 2005 Maine Transportation Count Book

Franklin

TOWN	STATION	ROAD	LOCATION	TYPE	GROUP	AADT01	AADT02	AADT03	AADT04	AADT05
07 KINGFIELD	43303	0016X	SR 16 E/O IR 315 (MAPLE ST) @ BR# 5867	C	II	.	.	2180	.	.
07 KINGFIELD	43305	0016X	SR 16 S/O IR 315 (MAPLE ST) @ BR# 5852	C	II	.	.	2850	.	.
07 KINGFIELD	43503	0016X	SR 16 E/O IR 317 (RIVERSIDE RD)	C	II	1700	.	1850	.	.
07 KINGFIELD	43908	0016X	SR 16/27 NW/O SR 142	C	ATR34304	.	.	5830	.	.
07 KINGFIELD	43404	0027X	SR 27 SE/O SR 16	C	ATR57300	.	.	3330	.	.
07 KINGFIELD	56400	0027X	SR 27 @ NEW PORTLAND TL	C	ATR34304	2320	.	.	.	.
07 KINGFIELD	34407	00310	IR 310 (WEST KINGFIELD RD) W/O SR 16/27	C	I	1050	.	1020	.	.
07 KINGFIELD	43301	00315	IR 315 (MAPLE ST) N/O IR 708	C	I	460	.	.	.	.
07 KINGFIELD	43505	00317	IR 317 (RIVERSIDE RD) S/O SR 16	C	I	.	.	290	.	.
07 KINGFIELD	43905	00698	IR 698 (HIGH ST) S/O SR 142	C	I	.	.	240	.	.
07 KINGFIELD	43706	0142X	SR 142 SW/O IR 688 (CURVE ST)	C	I	1360	.	1500	.	.
07 KINGFIELD	43906	0142X	SR 142 SW/O IR 698 (HIGH ST)	C	I	.	.	1880	.	.
07 LANG TWP	31506	0016X	SR 16 SW/O IR 750	C	II+III	660	.	.	.	.
07 MADRID	32104	0004X	SR 4 SE/O IR 546	C	II+III	.	.	1370	.	.
07 MADRID	32106	0004X	SR 4 SW/O IR 546	C	III	1170	.	.	.	.
07 MADRID	32101	00546	IR 546 N/O IR 668	C	I	250	.	.	.	.
07 NEW SHARON	39402	0002X	US 2 NE/O IR 1103 (W JCT) (OLD MERCER)	C	II	5480	.	.	.	.
07 NEW SHARON	39506	0002X	US 2/SR 27 SW/O IR 435 (WEEKS MILLS RD)	C	ATR36907	8000	.	7580	.	.
07 NEW SHARON	42600	0027X	SR 27/US 2 @ BR# 5724	C	ATR36907	8430	.	8020	.	.
07 NEW SHARON	42804	0027X	SR 27/US 2 SE/O SR 134 (E JCT)	C	ATR36907	.	.	7270	.	.
07 NEW SHARON	42808	0027X	SR 27/US 2 NW/O SR 134 (E JCT)	C	II	8130	.	.	.	.
07 NEW SHARON	40808	00418	IR 418 (WEEKS MILLS RD) NW/O IR 1343	C	I	.	.	410	.	.
07 NEW SHARON	38908	0041X	SR 41 NW/O SR 134	C	II	1160	.	1050	.	.
07 NEW SHARON	51306	00420	IR 420 (BAILEY HILL) SW/O IR 418	C	I	.	.	260	.	.
07 NEW SHARON	56206	00424	IR 424 SW/O IR 421 @ BR# 0407	C	I	90	.	.	.	.
07 NEW SHARON	42701	00427	IR 427 (INDUSTRY RD) N/O SR 134	C	I	640	.	700	.	.
07 NEW SHARON	39508	00435	IR 435 (WEEKS MILL RD) NW/O US 2/SR 27	C	I	.	.	490	.	.
07 NEW SHARON	39102	00437	IR 437 NE/O SR 27 @ BR# 0408	C	I	130	.	.	.	.
07 NEW SHARON	40802	01343	IR 1343 (MUDDY BK) NE/O IR 418 @BR# 0406	C	I	40	.	80	.	.
07 NEW SHARON	38901	0134X	SR 134 N/O SR 41	C	I	.	.	310	.	.
07 NEW SHARON	39300	0134X	SR 134 (STARKS RD) @ STARKS TL	C	I	.	.	320	.	.
07 NEW SHARON	42702	0134X	SR 134 (STARKS RD) NE/O IR 427(INDUSTRY)	C	I	790	.	710	.	.
07 NEW SHARON	42805	0134X	SR 134 S/O SR 27/US 2 (E JCT)	C	I	.	.	1030	.	.
07 NEW SHARON	48606	0134X	SR 134 SW/O IR 441 (SMITH RD) (N JCT)	C	I	700	.	.	.	.

## 2005 Maine Transportation Count Book

Franklin

TOWN	STATION	ROAD	LOCATION	TYPE	GROUP	AADT01	AADT02	AADT03	AADT04	AADT05
07 NEW VINEYARD	42002	0027X	SR 27/234 NE/O SR 234	C	ATR57300	3710	.	3800	.	.
07 NEW VINEYARD	42006	0027X	SR 27 SW/O SR 234 @ BR# 5355	C	ATR57300	3680	.	3830	.	.
07 NEW VINEYARD	42101	0027X	SR 27 N/O SR 234	C	ATR57300	2790	.	2760	.	.
07 NEW VINEYARD	42105	0027X	SR 27/234 S/O SR 234	C	ATR34304	3640	.	.	.	.
07 NEW VINEYARD	42001	00333	IR 333 (SCHOOL ST) N/O SR 234	C	I	.	.	200	.	.
07 NEW VINEYARD	42007	0234X	SR 234 W/O IR 333 (SCHOOL ST)	C	I	760	.	700	.	.
07 NEW VINEYARD	42103	0234X	SR 234 E/O SR 27	C	I	810	.	960	.	.
07 PERKINS TWP	41200	0156X	SR 156 @ WASHINGTON TWP TL @ BR# 5366	C	III	980	.	1030	.	.
07 PHILLIPS	32704	0004X	SR 4 SE/O SR 142/149	C	I	.	.	1840	.	.
07 PHILLIPS	35204	0004X	SR 4 SE/O IR 324 @ BR# 2545	C	II+III	1320	.	1390	.	.
07 PHILLIPS	35207	0004X	SR 4 W/O IR 324	C	II+III	1330	.	1320	.	.
07 PHILLIPS	35303	0004X	SR 4/142 E/O SR 142	S	I+II	2150	.	2060	.	.
07 PHILLIPS	35307	0004X	SR 4 W/O SR 142	S	II+III	1360	.	1580	.	.
07 PHILLIPS	47003	0004X	SR 4/142 E/O IR 1166	C	I+II	.	.	2010	.	.
07 PHILLIPS	47007	0004X	SR 4/142 W/O IR 1166	C	I+II	.	.	2230	.	.
07 PHILLIPS	35408	00326	IR 326 (PARK ST) NW/O IR 1616	C	I	.	.	280	.	.
07 PHILLIPS	46102	00338	IR 338 (MILE SQUARE RD) NE/O SR 149	C	I	.	.	210	.	.
07 PHILLIPS	45404	00899	IR 899 (DODGE RD) SE/O SR 149	C	I	.	.	320	.	.
07 PHILLIPS	46001	00966	IR 966 (MILL HILL RD) N/O SR 149	C	I	.	.	240	.	.
07 PHILLIPS	45905	01165	IR 1165 (PLEASANT ST) S/O SR 149	C	I	.	.	930	.	.
07 PHILLIPS	47002	01166	IR 1166 (BLAKE HILL RD) NE/O SR 4	C	I	.	.	260	.	.
07 PHILLIPS	35508	01193	IR 1193 NW/O SR 142	C	I	370	.	420	.	.
07 PHILLIPS	34902	0142X	SR 142 NE/O IR 323 (MADRID RD)	C	I	.	.	660	.	.
07 PHILLIPS	35305	0142X	SR 142 S/O SR 4	S	II+III	620	.	490	.	.
07 PHILLIPS	35402	0142X	SR 142(UPPER VILLAGE)NE/O IR 1616(N JCT)	c	i	1220	.	1440	.	.
07 PHILLIPS	38201	0142X	SR 142 (UPPER VILLAGE RD) N/O IR 966	C	I	.	.	1510	.	.
07 PHILLIPS	45301	0142X	SR 142 (UPPER VILLAGE RD) N/O IR 1166	C	I	1560	.	1890	.	.
07 PHILLIPS	46906	0142X	SR 142/149 SW/O SR 149	C	I	.	.	1660	.	.
07 PHILLIPS	45403	0149X	SR 149 E/O IR 899 (DODGE RD)	C	I	960	.	1360	.	.
07 PHILLIPS	45902	0149X	SR 149 NE/O IR 1165@BR# 5063 (SANDY RVR)	C	I	.	.	1570	.	.
07 PHILLIPS	45907	0149X	SR 149 W/O IR 1165	C	I	1280	.	1530	.	.
07 PHILLIPS	46004	0149X	SR 149 SE/O IR 966 (MILL HILL RD)	C	I	740	.	.	.	.
07 PHILLIPS	46104	0149X	SR 149 SE/O IR 338 (MILE SQUARE RD)	C	I	420	.	1410	.	.
07 PHILLIPS	46904	0149X	SR 149 SE/O SR 142/149	C	I	1320	.	1670	.	.

# 2005 Maine Transportation Count Book

County

Franklin

TOWN	STATION	ROAD	LOCATION	TYPE	GROUP	AADT01	AADT02	AADT03	AADT04	AADT05
RANGELEY	00107	0004X	SR 4/16 (MAIN ST) W/O ALLEN ST	C	III	4390	.	4030	.	.
RANGELEY	00207	0004X	SR 4/16 W/O IR 810 (RANGELEY MANOR DR)	C	III	3200	.	2970	.	.
RANGELEY	00407	0004X	SR 4/16 (MAIN ST) W/O LOON LAKE RD	C	III	3760	.	.	.	.
RANGELEY	01104	0004X	SR 4 (MAIN ST) SE/O SR 16 (PLEASANT ST)	C	II+III	5230	.	6180	.	.
RANGELEY	01107	0004X	SR 4/16 (MAIN ST) W/O SR 16 (PLEASANT)	C	III	.	.	4820	.	.
RANGELEY	02201	0004X	SR 4 (MAIN ST) N/O GRAND VIEW AVE	C	III	3240	.	.	.	.
RANGELEY	31905	0004X	SR 4 S/O IR 540 (DALLAS HILL RD)	C	II+III	2010	.	2600	.	.
RANGELEY	32807	0004X	SR 4 W/O IR 820 (FRANKLIN ST)	C	III	1450	.	1020	.	.
RANGELEY	33003	0004X	SR 4/16 E/O SR 16	C	III	2200	.	2300	.	.
RANGELEY	33006	0004X	SR 4 SW/O SR 16	C	III	2070	.	2200	.	.
RANGELEY	33107	0004X	SR 4/16 (MAIN ST) W/O IR 538 (E JCT)	C	III	.	.	2530	.	.
RANGELEY	33207	0004X	SR 4/16 W/O IR 553	C	III	2400	.	2110	.	.
RANGELEY	33603	0004X	SR 4/16 E/O IR 814	C	III	3040	.	.	.	.
RANGELEY	01101	0016X	SR 16 (PLEASANT ST) N/O SR 4 (MAIN ST)	C	II+III	2530	.	2250	.	.
RANGELEY	01803	0016X	SR 16 (DEAD RIVER RD) E/O PLEASANT ST	C	II+III	1890	.	1480	.	.
RANGELEY	01805	0016X	SR 16 (PLEASANT ST) S/O DEAD RIVER RD	C	II+III	2700	.	.	.	.
RANGELEY	01902	0016X	SR 16 (DEAD RIVER) 0.15 MI NE/O ROBBINS	C	II+III	1600	.	1320	.	.
RANGELEY	33001	0016X	SR 16 N/O SR 4/16	C	III	.	.	850	.	.
RANGELEY	32501	0017X	SR 17 N/O IR 859	C	III	910	.	.	.	.
RANGELEY	32905	0017X	SR 17 S/O IR 785 (RANGELEY AVE)	C	III	1240	.	1240	.	.
RANGELEY	00401	00536	LOON LAKE RD N/O SR 4/16 (MAIN ST)	C	III	820	.	820	.	.
RANGELEY	31903	00540	IR 540 (DALLAS HILL RD) E/O SR 4	C	III	1050	.	1110	.	.
RANGELEY	37605	00557	IR 557 (BALD MTN RD) S/O SR 4	C	III	.	.	540	.	.
RANGELEY	00205	00810	IR 810 (RANGELEY MANOR RD) S/O SR 4/16	C	III	.	.	190	.	.
RANGELEY	32805	00820	IR 820 (FRANKLIN ST) S/O SR 4	C	III	170	.	.	.	.
RANGELEY	00101	00831	ALLEN ST N/O SR 4/16 (MAIN ST)	C	III	610	.	.	.	.
RANGELEY	01801	00839	PLEASANT ST N/O SR 16 (DEAD RIVER RD)	C	III	370	.	360	.	.
RANGELEY	02001	00839	PLEASANT ST 0.2 MI N/O OQUOSSOC AVE	C	III	210	.	.	.	.
RANGELEY	32506	00859	(PW) IR 859 SW/O SR 17	C	III	510	.	.	.	.
RANGELEY	01001	01056	CENTER ST N/O SR 4/16 (MAIN ST)	C	III	270	.	.	.	.
RANGELEY	01807	01081	SCHOOL ST W/O SR 16 (PLEASANT ST)	C	III	390	.	360	.	.
RANGELEY PLT	32405	0017X	SR 17 S/O IR 1300 (HERBIE WELCH TRAIL)	C	III	.	.	510	.	.
RANGELEY PLT	32408	0017X	SR 17 NW/O IR 1300 (HERBIE WELCH TRAIL)	C	III	.	.	1000	.	.
RANGELEY PLT	32407	00557	IR 557 (BALD MTN RD) W/O SR 17	C	III	.	.	230	.	.

## 2005 Maine Transportation Count Book

Franklin

TOWN	STATION	ROAD	LOCATION	TYPE	GROUP	AADT01	AADT02	AADT03	AADT04	AADT05
07 RANGELEY PLT	37708	00557	IR 557 (BALD MTN RD) NW/O IR 859	C	III	.	.	220	.	.
07 RANGELEY PLT	37702	00859	IR 859 (MOOSELOOKMEGUNTIC) NE/O IR 557	C	III	.	.	310	.	.
07 RANGELEY PLT	37706	00859	IR 859 (MOOSELOOKMEGUNTIC) SW/O IR 557	C	III	.	.	330	.	.
07 RANGELEY PLT	32403	01300	IR 1300 (HERBIE WELCH TRAIL) E/O SR 17	C	III	.	.	280	.	.
07 RANGELEY PLT	33308	01657	IR 1657 (PARK RD) NW/O IR 1300	C	III	.	.	180	.	.
07 SALEM TWP	34701	00321	IR 321 (HOWARD RD) N/O SR 142 @ BR# 0382	C	I	110	.	.	.	.
07 SALEM TWP	34705	00321	IR 321 (HOWARD RD) S/O SR 142	C	I	340	.	390	.	.
07 SALEM TWP	33405	00329	IR 329 (REED) S/O SR 142 (PHILLIPS FREE)	C	I	.	.	100	.	.
07 SALEM TWP	34703	0142X	SR 142(PHILLIPS FREE) E/O IR 321(HOWARD)	C	I	880	.	760	.	.
07 SALEM TWP	34707	0142X	SR 142 (PHILLIPS FREE RD) W/O IR 321	C	I	990	.	930	.	.
07 SALEM TWP	34806	0142X	SR 142 SW/O IR 842 @ BR# 0376	C	I	780	.	.	.	.
07 SANDY RIVER PLT	32004	0004X	SR 4 SE/O IR 1456 (S JCT)	C	III	1230	.	1390	.	.
07 SANDY RIVER PLT	53404	0004X	SR 4 SE/O IR 2050	C	III	1120	.	.	.	.
07 SANDY RIVER PLT	55300	0004X	SR 4 @ TOWNSHIP E TL	C	II+III	1030	.	1190	.	.
07 SANDY RIVER PLT	32007	00555	IR 555 (SOUTH SHORE RD) W/O SR 4@BR#3586	C	III	550	.	580	.	.
07 STRONG	44505	0004X	SR 4 S/O SR 145	C	I	2730	.	3160	.	.
07 STRONG	44507	0004X	SR 4 W/O SR 145	C	I+II	1610	.	.	.	.
07 STRONG	50405	0004X	SR 4 S/O IR 643 (CHANDLER RD)	C	I	3470	.	3640	.	.
07 STRONG	50507	0004X	SR 4 W/O IR 643 (CHANDLER RD)	C	I	2170	.	1540	.	.
07 STRONG	44108	00342	IR 342 (BURBANK HILL RD) NW/O SR 149	C	I	.	.	360	.	.
07 STRONG	51702	00403	IR 403 (POND RD) NE/O SR 234	C	I	.	.	300	.	.
07 STRONG	50408	00643	IR 643 (CHANDLER RD) NW/O SR 4	C	I	1020	.	.	.	.
07 STRONG	49308	01076	IR 1076 (W FREEMAN RD) NW/O SR 145	C	I	590	.	470	.	.
07 STRONG	44201	0145X	SR 145 N/O IR 1113 (CHURCH HILL RD)	C	I	2790	.	.	.	.
07 STRONG	44501	0145X	SR 145 N/O SR 4 @ BR # 5161	C	I	2980	.	.	.	.
07 STRONG	49302	0145X	SR 145 NE/O IR 1076 (W FREEMAN RD)	C	I	780	.	970	.	.
07 STRONG	44103	0149X	SR 149 E/O IR 342 @ BR# 3904	C	I	760	.	.	.	.
07 STRONG	44107	0149X	SR 149 W/O IR 342 (BURBANK HILL RD)	C	I	.	.	1490	.	.
07 STRONG	44304	0149X	SR 149 SE/O SR 145	C	I	960	.	.	.	.
07 STRONG	44308	0149X	SR 149 NW/O SR 145	C	I	650	.	.	.	.
07 STRONG	44608	0149X	SR 149 NW/O SR 234	C	I	1220	.	.	.	.
07 STRONG	44604	0234X	SR 234 SE/O SR 149	C	I	1020	.	.	.	.
07 STRONG	51703	0234X	SR 234 E/O IR 403 (POND RD)	C	I	.	.	620	.	.
07 STRONG	51707	0234X	SR 234 W/O IR 1164	C	I	630	.	.	.	.

# 2005 Maine Transportation Count Book

County

Franklin

TOWN	STATION	ROAD	LOCATION	TYPE	GROUP	AADT01	AADT02	AADT03	AADT04	AADT05	
07	TEMPLE	50201	00355	IR 355 (DAY MTN RD) N/O IR 357 (INTERVAL)	C	I	.	.	310	.	.
07	TEMPLE	40103	00357	IR 357 (CUMMINGS HILL RD) E/O SR 43 @ BR	C	I	.	.	380	.	.
07	TEMPLE	40107	00357	IR 357 (INTERVAL RD) W/O SR 43 (TEMPLE)	C	I	560	.	730	.	.
07	TEMPLE	50208	00357	IR 357 (INTERVAL RD) NW/O IR 355	C	I	.	.	320	.	.
07	TEMPLE	55900	00357	IR 357 @ BR# 0392 (2.2 MI NW/O IR 448)	C	I	40	.	.	.	.
07	TEMPLE	50104	00359	IR 359 SE/O IR 456 (VARNUM POND RD) @ BR	C	I	.	.	170	.	.
07	TEMPLE	40104	0043X	SR 43 (TEMPLE RD) SE/O IR 357 (INTERVAL)	C	I	770	.	880	.	.
07	TEMPLE	50202	00450	IR 450 NE/O IR 355 @ BR# 0411	C	I	20	.	.	.	.
07	TEMPLE	50107	00456	IR 456 (VARNUM POND RD) W/O IR 359	C	I	.	.	300	.	.
07	TEMPLE	56003	00456	IR 456 E/O IR 451 @ BR# 0415	C	I	10	.	.	.	.
07	TWP 06	30300	00370	IR 370 (NUMBER 6 RD) @ BR# 0398	C	I	.	.	150	.	.
07	TWP D	33500	0017X	SR 17 @ BR# 3615	C	III	.	.	470	.	.
07	WELD	35902	00363	IR 363 NE/O IR 1130 @ BR# 5588	C	III	390	.	.	.	.
07	WELD	35707	00368	IR 368 (WESTSIDE RD) W/O SR 142 @ BR# 5528	C	III	.	.	470	.	.
07	WELD	49402	00582	IR 582 (CENTER HILL) NE/O SR 142 @ BR# 0396	C	III	.	.	110	.	.
07	WELD	36102	01105	IR 1105 (CENTER HILL RD) NE/O SR 142	C	III	310	.	320	.	.
07	WELD	35904	01130	IR 1130 (WESTSIDE RD) SE/O IR 363	C	III	390	.	.	.	.
07	WELD	55800	01130	IR 1130 @ BR# 0399 (1.0 MI NW/O IR 363)	C	III	40	.	.	.	.
07	WELD	35701	0142X	SR 142 (CHURCH ST) N/O IR 368 (WESTSIDE)	C	II+III	550	.	640	.	.
07	WELD	35704	0142X	SR 142 (CHURCH ST) SE/O IR 368 (WESTSIDE)	C	III	790	.	.	.	.
07	WELD	36004	0142X	SR 142 (CHURCH ST) SE/O IR 1666 (BACK RD)	C	III	730	.	700	.	.
07	WELD	36008	0142X	SR 142 (CHURCH) NW/O IR 1666 (BACK RD)	C	III	820	.	860	.	.
07	WELD	36106	0142X	SR 142 (MILL ST) SW/O SR 156	C	III	.	.	840	.	.
07	WELD	49401	0142X	SR 142 (CHURCH) N/O IR 582 (CENTER HILL)	C	III	430	.	.	.	.
07	WELD	36104	0156X	SR 156 (SCHOOL ST) SE/O SR 142	C	III	920	.	1000	.	.
07	WELD	36005	01666	IR 1666 (BACK RD) S/O SR 142	C	III	320	.	.	.	.
07	WELD	35801	02009	IR 2009 (CTR HILL) N/O IR 1105 (TEMPLE)	C	III	.	.	200	.	.
07	WILTON	36907	0002X	US 2 W/O IR 455 (POND RD)	A	ATR36907	3370	3320	3320	3320	3230
07	WILTON	56304	0002X	US 2/SR 17 SE/O IR 385 (GORDON RD)	A	ATR56304	.	3400	3330	3410	3290
07	WILTON	00901	0002X	US 2/SR 4 N/O IR 466 (MUNSON RD)	C	I	11320	.	10550	.	.
07	WILTON	01102	0002X	US 2/SR 4 NE/O SR 156 (DEPOT ST)	C	I	10660	.	10520	.	.
07	WILTON	01106	0002X	US 2/SR 4 SW/O SR 156 (DEPOT ST)	C	I	11400	.	10850	.	.
07	WILTON	01202	0002X	US 2/SR 4 NE/O PROSPECT ST EXT	C	I	11400	.	.	.	.
07	WILTON	01707	0002X	US 2 W/O SR 4	S	ATR36907	4750	.	4600	.	.

## 2005 Maine Transportation Count Book

Franklin

TOWN	STATION	ROAD	LOCATION	TYPE	GROUP	AADT01	AADT02	AADT03	AADT04	AADT05
07 WILTON	02207	0002X	US 2 W/O PRESTON ST @ CUL	C	ATR36907	4580	.	4300	.	.
07 WILTON	04903	0002X	US 2/SR 4 E/O SR 4	S	I	.	.	11400	.	.
07 WILTON	36802	0002X	US 2 NE/O SR 17	M	ATR36907	.	.	3930	.	.
07 WILTON	36903	0002X	US 2 E/O IR 455 (POND RD)	C	ATR36907	.	.	4070	.	.
07 WILTON	44906	0002X	US 2/SR 4 SW/O IR 928 (CEMETERY RD)	C	I	11290	.	10840	.	.
07 WILTON	45203	0002X	US 2/SR 4 E/O IR 1152 (MAIN ST)	C	I	14190	.	13800	.	.
07 WILTON	44801	00359	IR 359 (TEMPLE RD) N/O IR 1152 (MAIN)	C	I	.	.	970	.	.
07 WILTON	50001	00359	IR 359 (TEMPLE RD) N/O IR 440 (ORCHARD)	C	I	630	.	690	.	.
07 WILTON	50007	00440	IR 440 (ORCHARD) W/O IR 359 (TEMPLE RD)	C	I	.	.	460	.	.
07 WILTON	36901	00455	IR 455 (POND RD) N/O US 2	C	I	.	.	520	.	.
07 WILTON	02603	00480	PROSPECT ST E/O MAIN ST	C	I	660	.	600	.	.
07 WILTON	04707	00480	PROSPECT ST EXT W/O US 2/SR 4	C	I	.	.	180	.	.
07 WILTON	34201	00560	IR 560 (BLUE SPRUCE RD) N/O IR 1157	C	I	.	.	180	.	.
07 WILTON	03808	00564	ORCHARD DR NW/O MAIN ST	C	I	.	.	620	.	.
07 WILTON	38508	00581	IR 581 (MCCRILLIS CNR RD) NW/O SR 133	C	I	710	.	670	.	.
07 WILTON	03405	01005	HIGH ST S/O SR 156 (WELD ST)	C	I	940	.	1200	.	.
07 WILTON	02806	01006	CANAL ST SW/O HIGH ST	C	I	.	.	180	.	.
07 WILTON	38504	01050	IR 1050 (MCCRILLIS CNR RD) SE/O SR 133	C	I	750	.	720	.	.
07 WILTON	03602	01152	MAIN ST NE/O SR 156 (DEPOT ST)	C	I	3700	.	4350	.	.
07 WILTON	44807	01152	IR 1152 (MAIN) W/O IR 359 (TEMPLE RD)	C	I	3710	.	3890	.	.
07 WILTON	45208	01152	IR 1152 (MAIN ST) NW/O US 2/SR 4	C	I	3290	.	3360	.	.
07 WILTON	02001	01153	MAIN ST N/O US 2	C	I	.	.	3100	.	.
07 WILTON	02005	01153	MAXWELL RD S/O US 2	C	I	.	.	2260	.	.
07 WILTON	02601	01153	MAIN ST N/O PROSPECT ST	C	I	4100	.	5120	.	.
07 WILTON	02902	01153	MAIN ST NE/O LAKE RD	C	I	3450	.	4380	.	.
07 WILTON	03306	01153	MAIN ST SW/O SR 156 (WELD ST)	C	I	3800	.	4910	.	.
07 WILTON	03802	01153	MAIN ST NE/O ORCHARD DR	C	I	4040	.	3970	.	.
07 WILTON	38501	0133X	SR 133 N/O IR 1050 (MCCRILLIS CNR RD)	C	I	1840	.	2820	.	.
07 WILTON	38505	0133X	SR 133 S/O IR 1050 (MCCRILLIS CNR RD)	C	I	1650	.	2550	.	.
07 WILTON	01004	0156X	SR 156 (DEPOT ST) SE/O ADAMS ST	C	I	2110	.	.	.	.
07 WILTON	01404	0156X	SR 156 (DEPOT ST) SE/O WHITTIER ST @ CUL	C	I	1510	.	1690	.	.
07 WILTON	03302	0156X	SR 156 (MAIN ST) NE/O SR 156 (WELD ST)	C	I	5280	.	6270	.	.
07 WILTON	03308	0156X	SR 156 (WELD ST) NW/O SR 156 (MAIN ST)	C	I	3200	.	3460	.	.
07 WILTON	03404	0156X	SR 156 (WELD ST) SE/O HIGH ST	C	I	2700	.	.	.	.



County

# 2005 Maine Transportation Count Book

Franklin

	TOWN	STATION	ROAD	LOCATION	TYPE	GROUP	AADT01	AADT02	AADT03	AADT04	AADT05
07	WILTON	03508	0156X	SR 156 (WELD ST) NW/O WOODLAND AVE @ CUL	C	I	2070	.	.	.	.
07	WILTON	03604	0156X	SR 156 (DEPOT ST) SE/O MAIN ST	C	I	2640	.	3080	.	.
07	WILTON	37008	0156X	SR 156 NW/O IR 451 (MAGRATH RD)	C	II	.	.	1860	.	.
07	WILTON	38606	0156X	SR 156 SW/O IR 1050	C	I	1090	.	1510	.	.
07	WILTON	54207	0156X	SR 156 W/O IR 889(WHITE SCHOOL HOUSE RD)	C	III	1090	.	1210	.	.
07	WILTON	35003	02042	IR 2042 (LAKE RD) E/O US 2	C	I	.	.	470	.	.