

3-1-1973

## Piscataquis River Bridge in the Town of Howland : Portal Revision, Bolt Schedule, (158-66), March 1973

Maine Department of Transportation

Follow this and additional works at: [https://digitalmaine.com/mdot\\_docs](https://digitalmaine.com/mdot_docs)

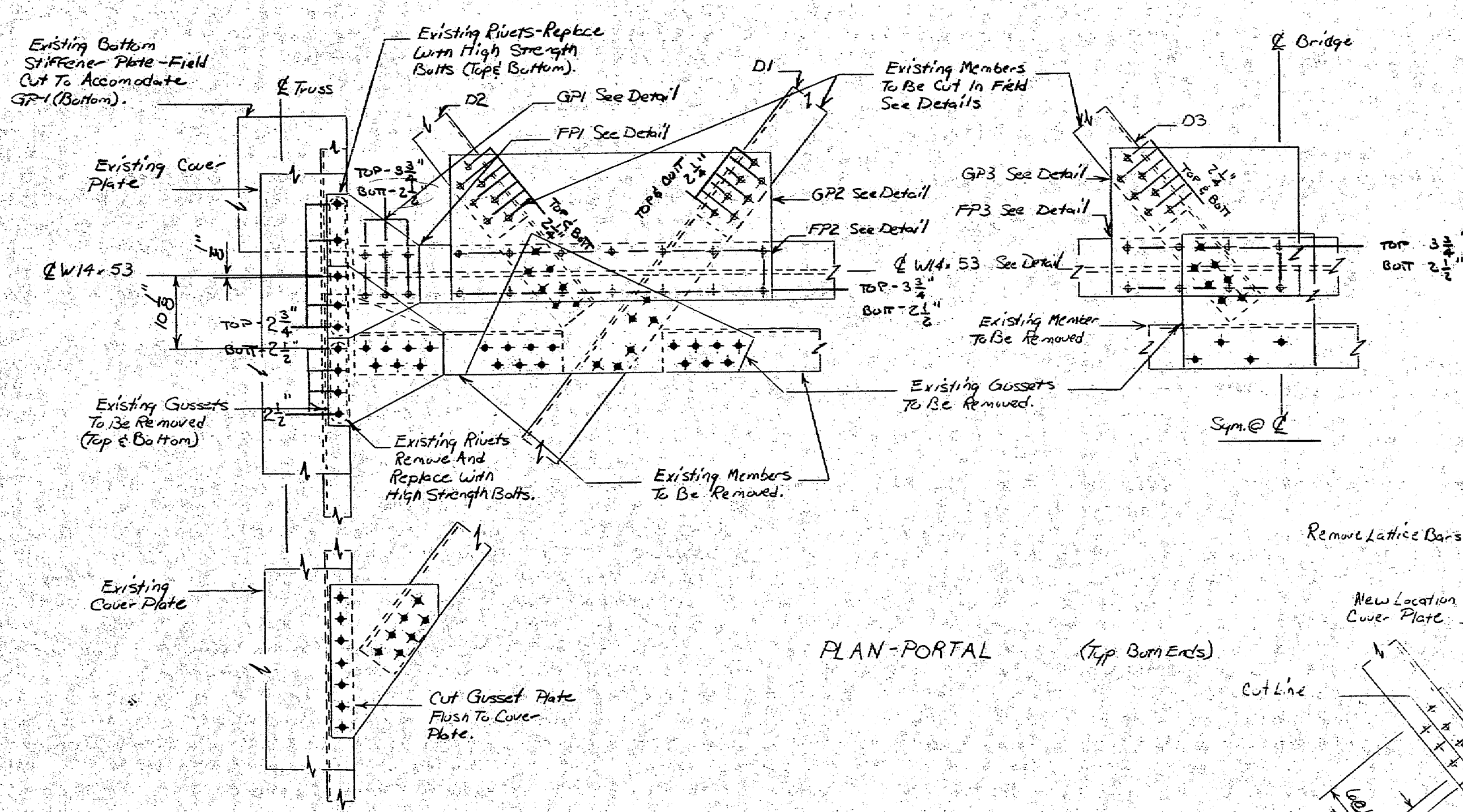
---

### Recommended Citation

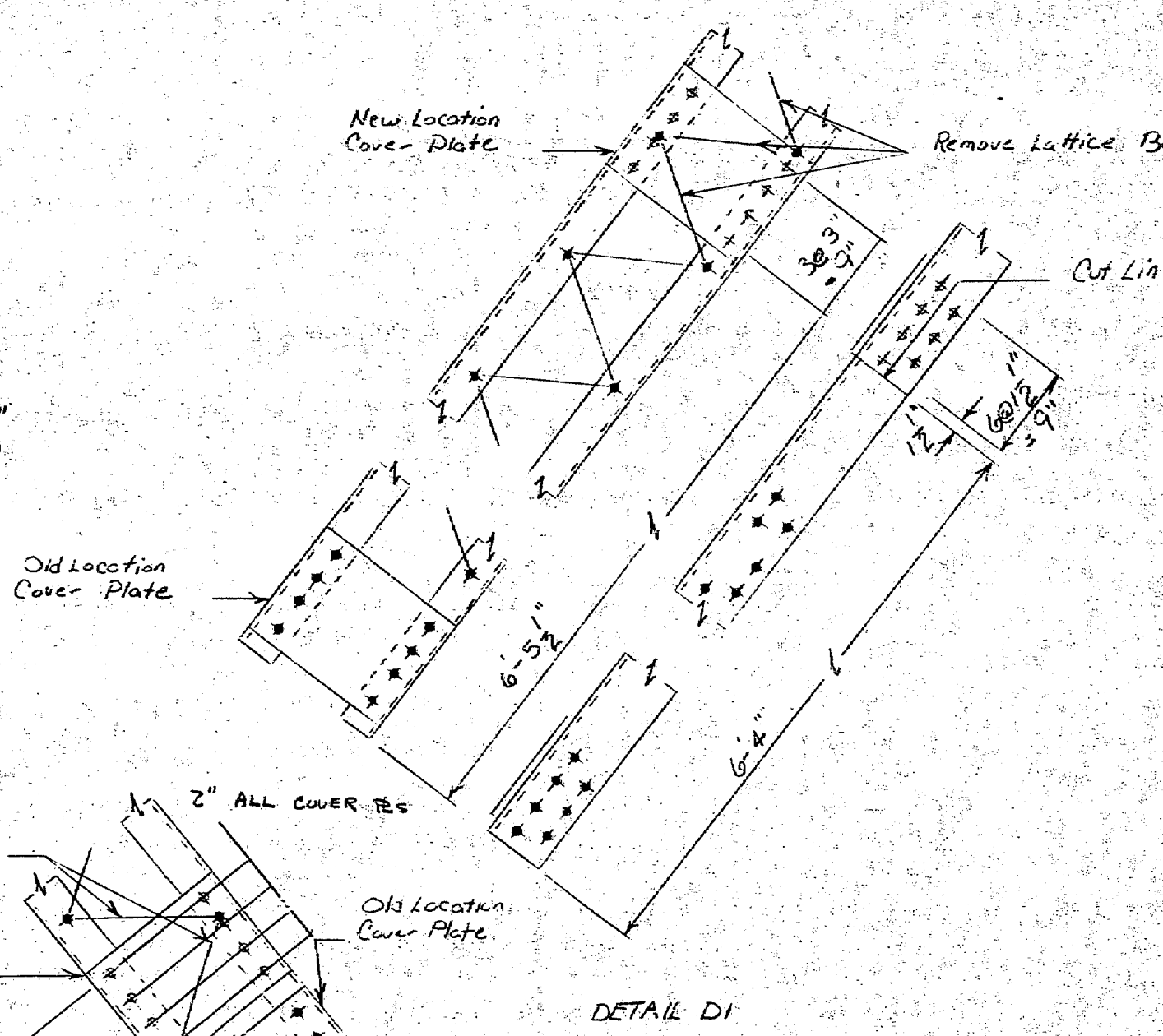
Maine Department of Transportation, "Piscataquis River Bridge in the Town of Howland : Portal Revision, Bolt Schedule, (158-66), March 1973" (1973). *Transportation Documents*. 1929.  
[https://digitalmaine.com/mdot\\_docs/1929](https://digitalmaine.com/mdot_docs/1929)

This Text is brought to you for free and open access by the Transportation at Digital Maine. It has been accepted for inclusion in Transportation Documents by an authorized administrator of Digital Maine. For more information, please contact [statedocs@maine.gov](mailto:statedocs@maine.gov).

F.R.E.A. NO.	STATE	PROJECT NUMBER	SHEET NO.	TOTAL SHEETS
3	MAINE	3040	11	2

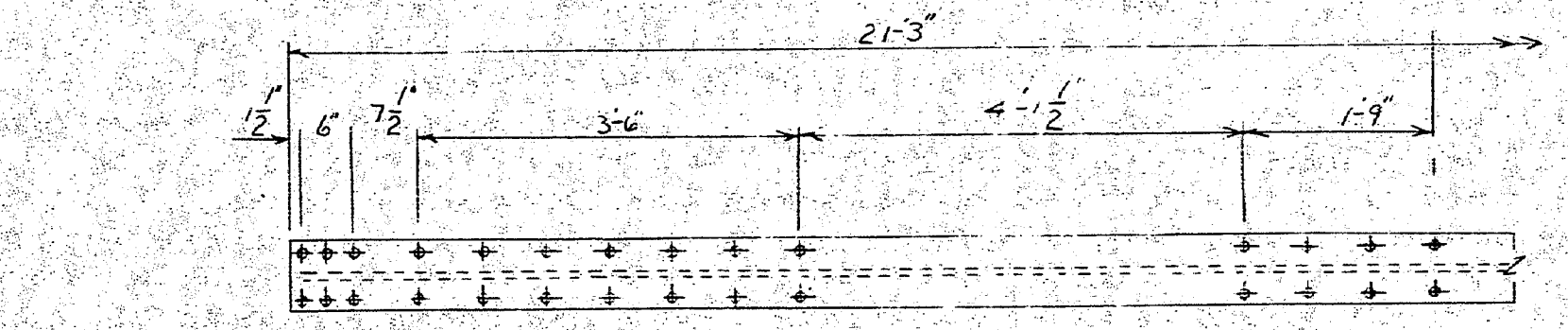


PLAN-PORTAL (Top Beam Ends)

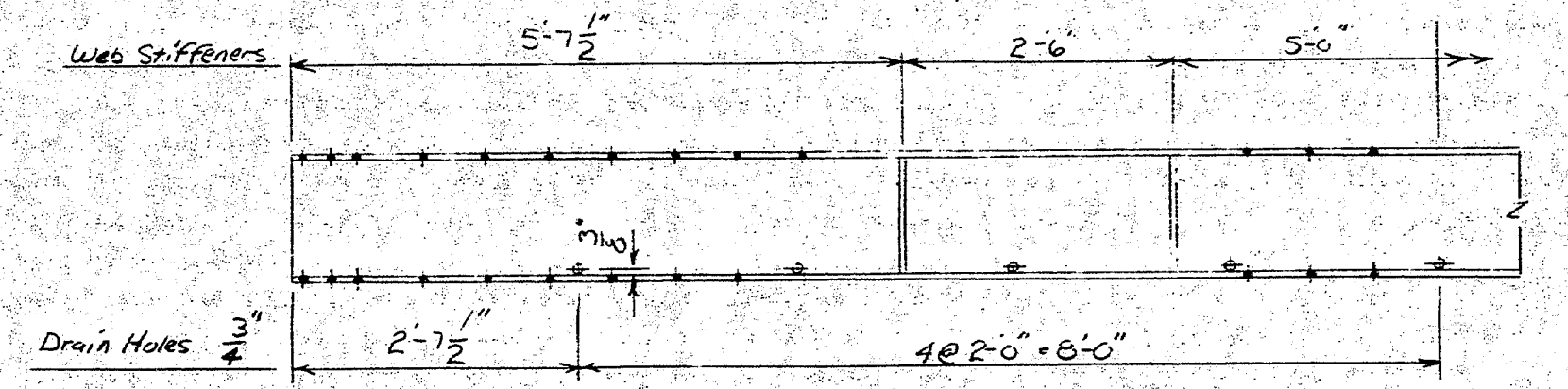


DETAIL D1

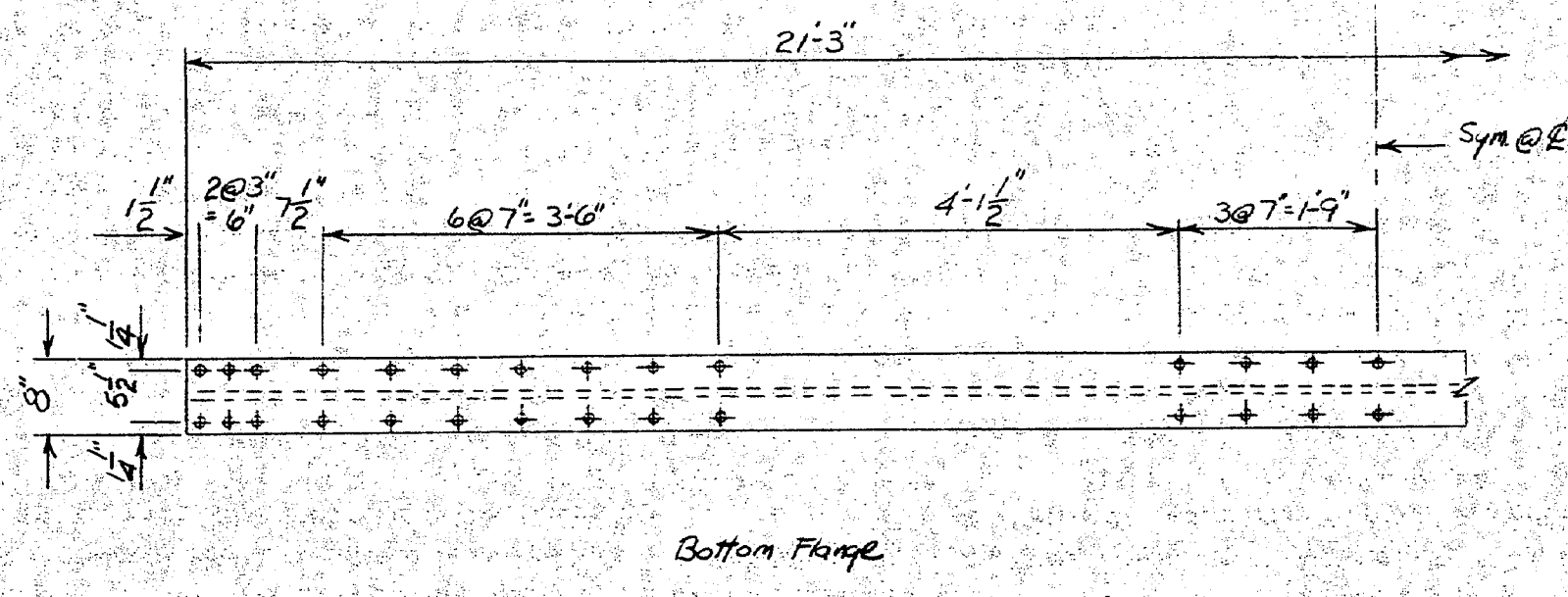
DETAIL D2



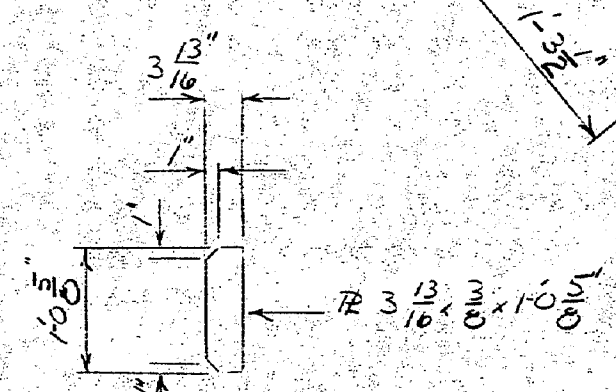
Top Flange



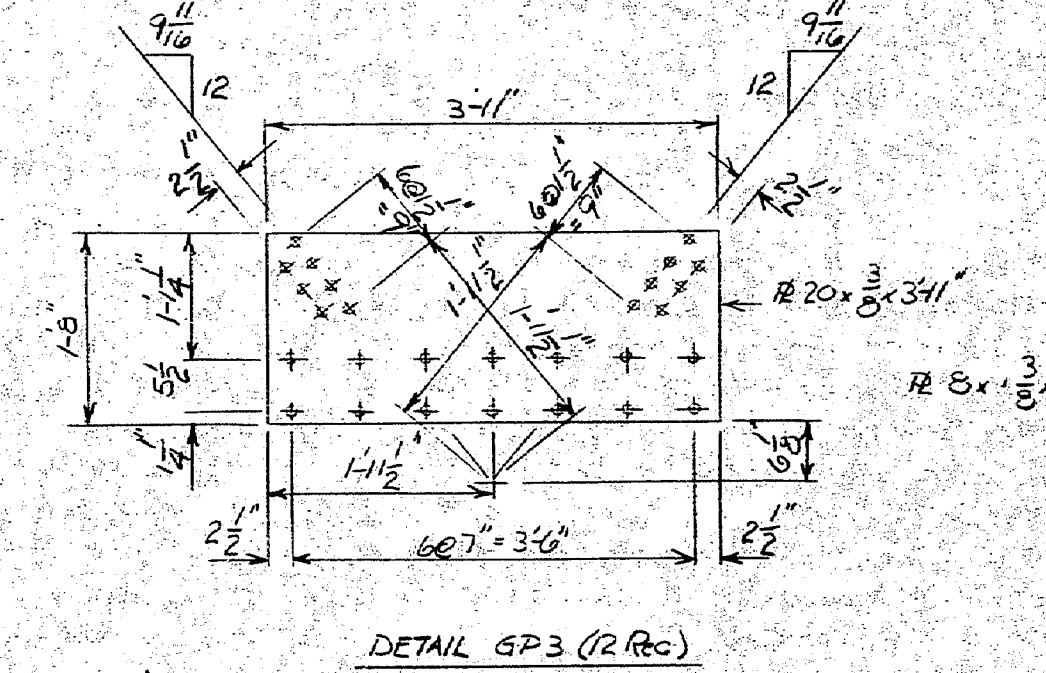
W14x53 Elevation (6 Rec)



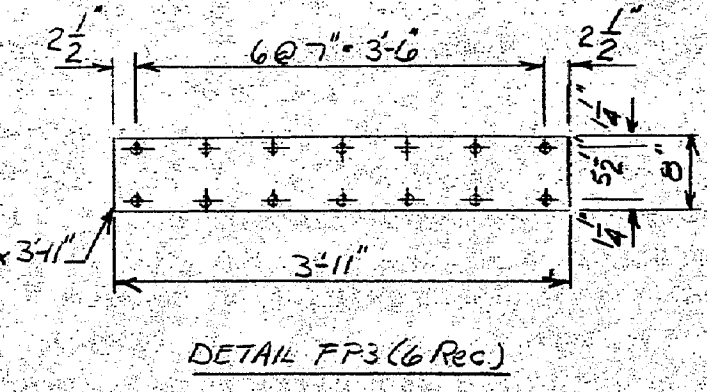
Bottom Flange



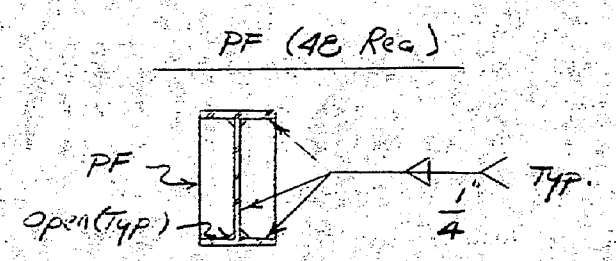
DETAIL D3



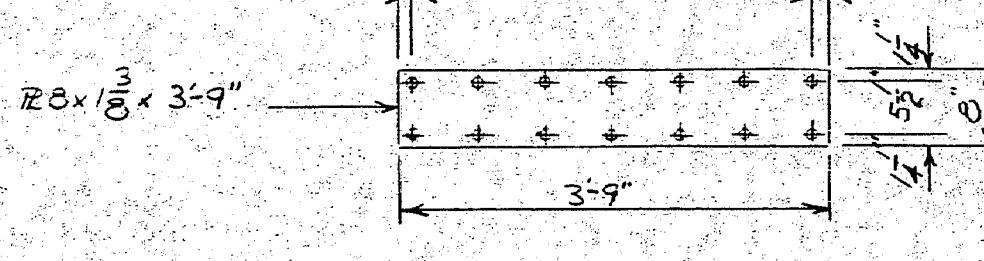
DETAIL GP3 (12 Rec)



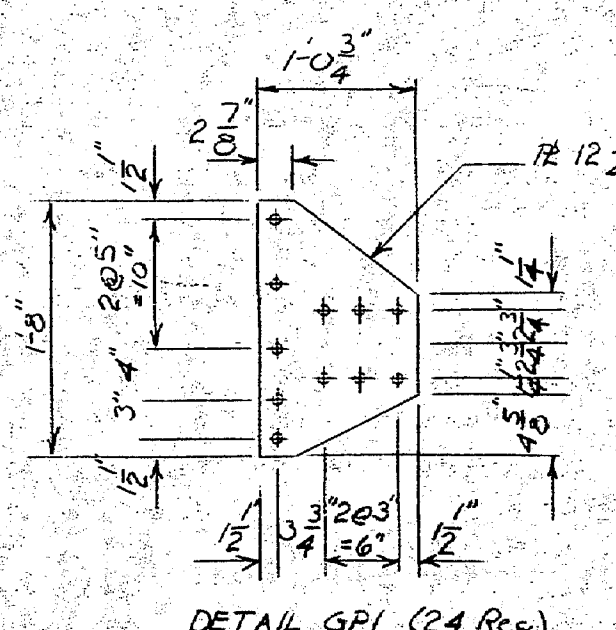
DETAIL FP3 (6 Rec)



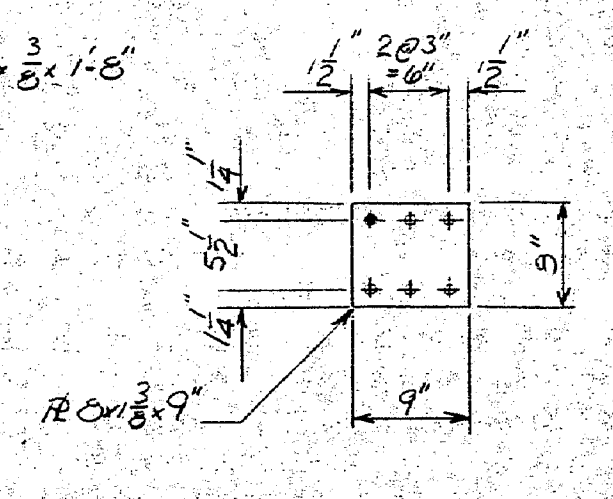
PF (40 Rec)



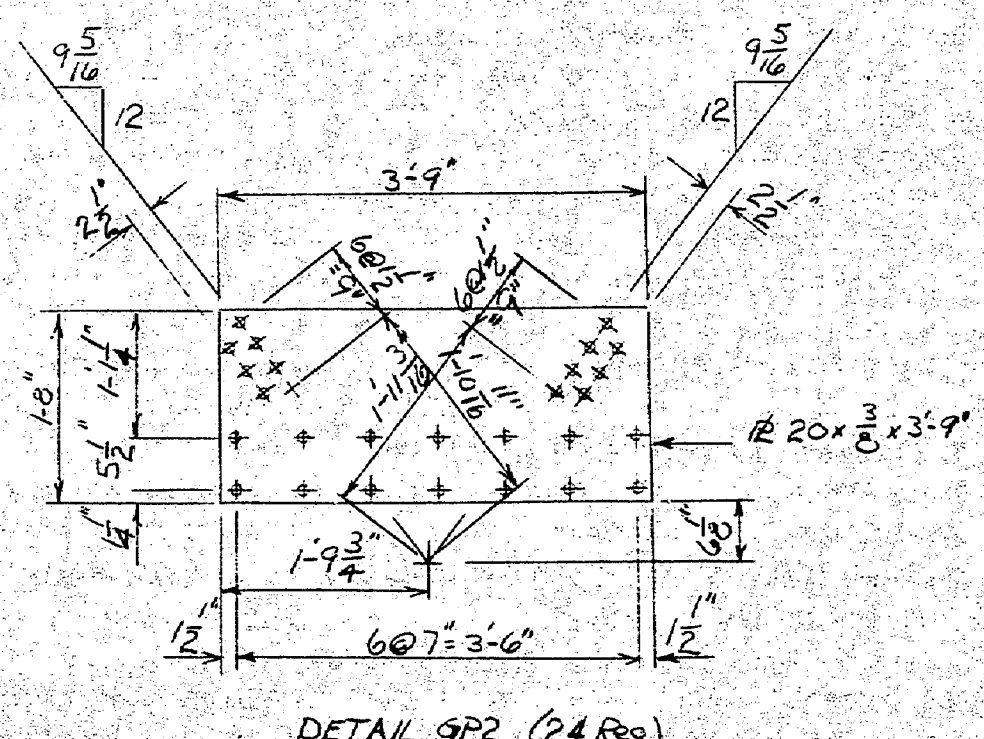
DETAIL FP2 (12 Rec)



DETAIL GP1 (24 Rec)



DETAIL FP1 (12 Rec)



DETAIL GP2 (24 Rec)

- NOTES:
- New Holes To Be Drilled Using Gusset Plates As Templates After Erection of W14-53.
  - Place Fill Plates Between Gusset Plate And Top Flange Of W14-53. Fill Plates Can Be Made Of Two Plates.
  - 4 New 5/16 Holes
  - 4 Existing Holes
  - Edge Distance 1/2" Unless Noted.
  - Field Fabricate AS SHOWN

**BOLT SCHEDULE**

STATE OF MAINE  
 DEPARTMENT OF TRANSPORTATION  
 PORTAL REVISION  
 PISCATAQUIS RIVER BRIDGE  
 IN THE TOWN OF  
 HOWLAND  
 SHEET 1 OF 2 AUGUSTA, MAINE MARCH 1973

DATE	BY
3-1-73	DCE
3-7-73	JEF
3-7-73	JEF
DESIGN - DETAILED	DCE
CHECKED	JEF
BY OTHER	
FIELD CHANGES	
PLANS	