

3-1-1973

Piscataquis River Bridge in the Town of Howland : Portal Revision (157-182), March 1973

Maine Department of Transportation

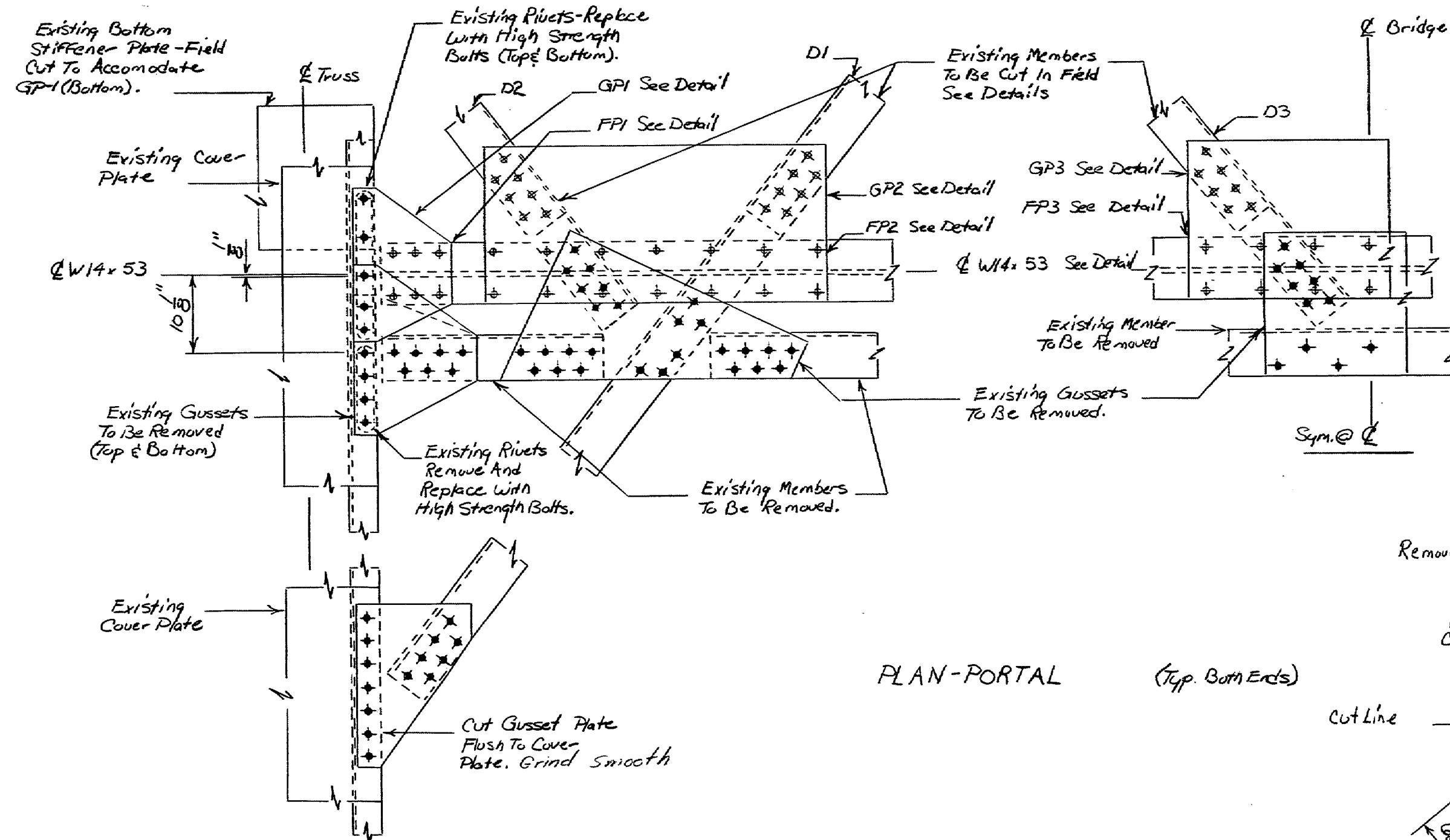
Follow this and additional works at: https://digitalmaine.com/mdot_docs

Recommended Citation

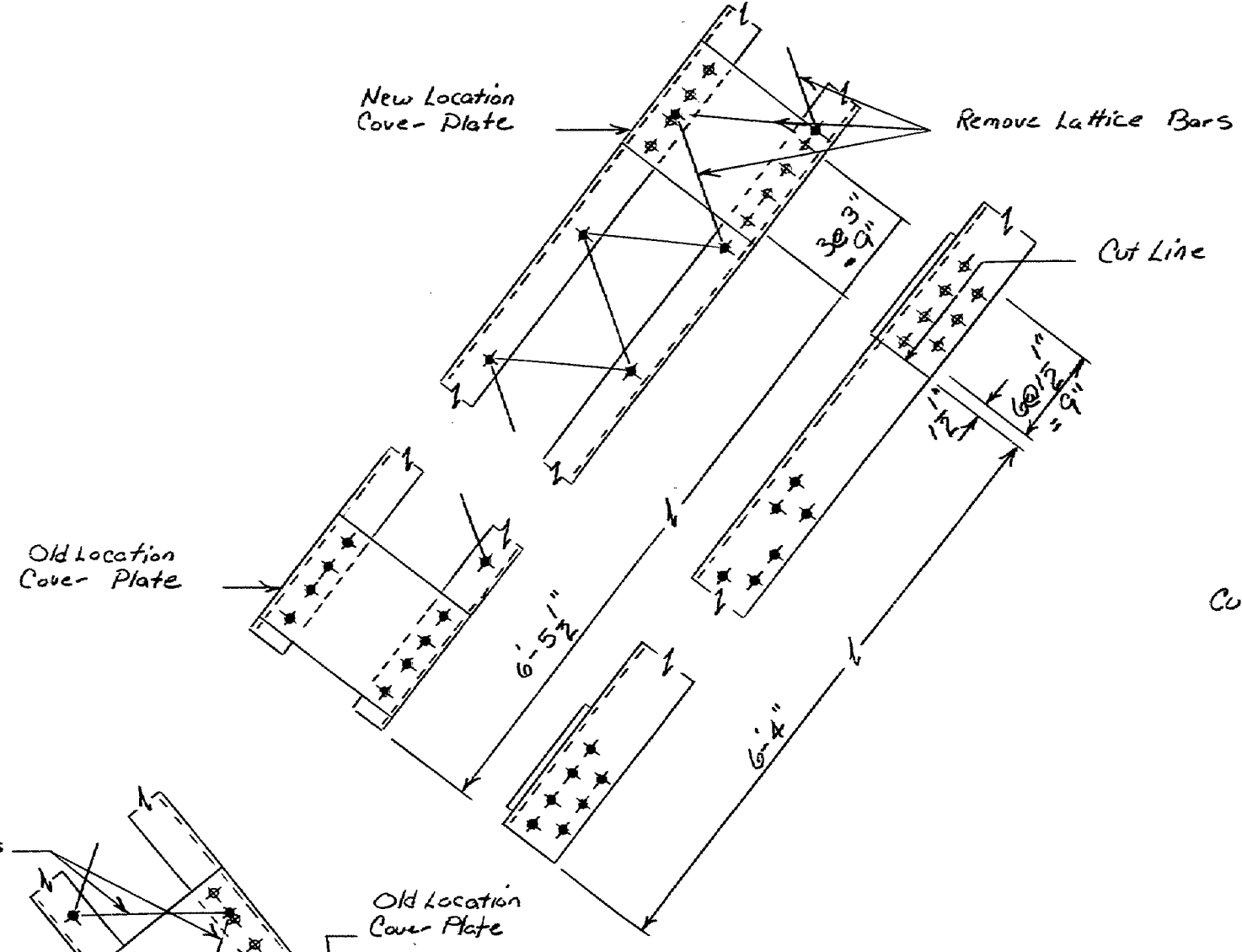
Maine Department of Transportation, "Piscataquis River Bridge in the Town of Howland : Portal Revision (157-182), March 1973" (1973). *Transportation Documents*. 1924.
https://digitalmaine.com/mdot_docs/1924

This Text is brought to you for free and open access by the Transportation at Digital Maine. It has been accepted for inclusion in Transportation Documents by an authorized administrator of Digital Maine. For more information, please contact statedocs@maine.gov.

FED. A. DIST. NO.	STATE	PROJECT NUMBER	SHEET NO.	TOTAL SHEETS
1	MAINE	3040	1	2

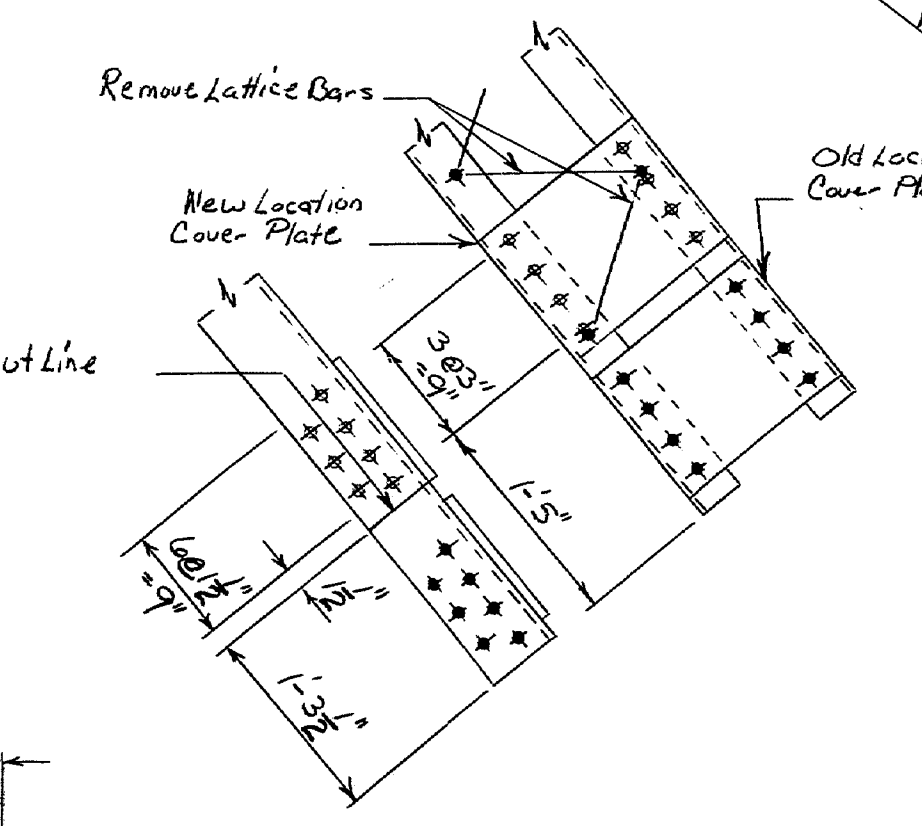


PLAN-PORTAL (Top Beam Ends)

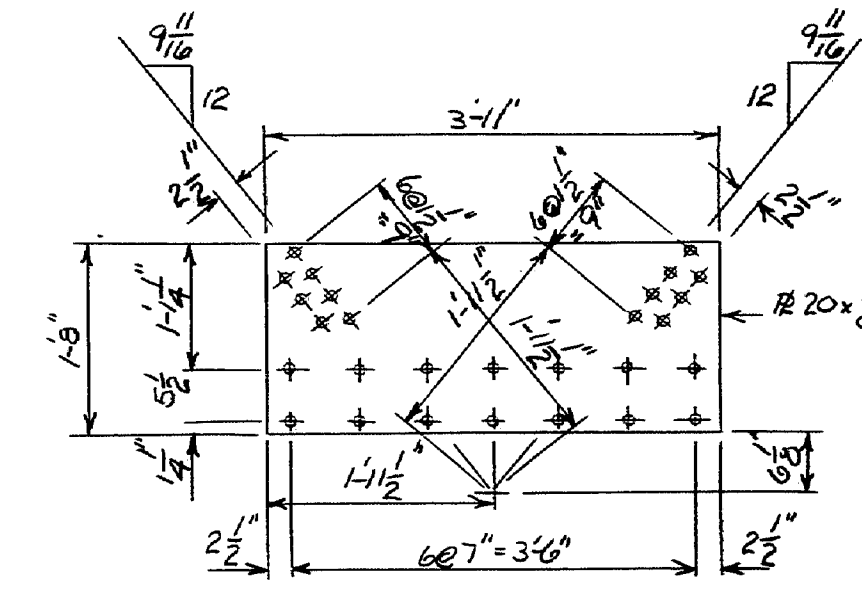


DETAIL D1

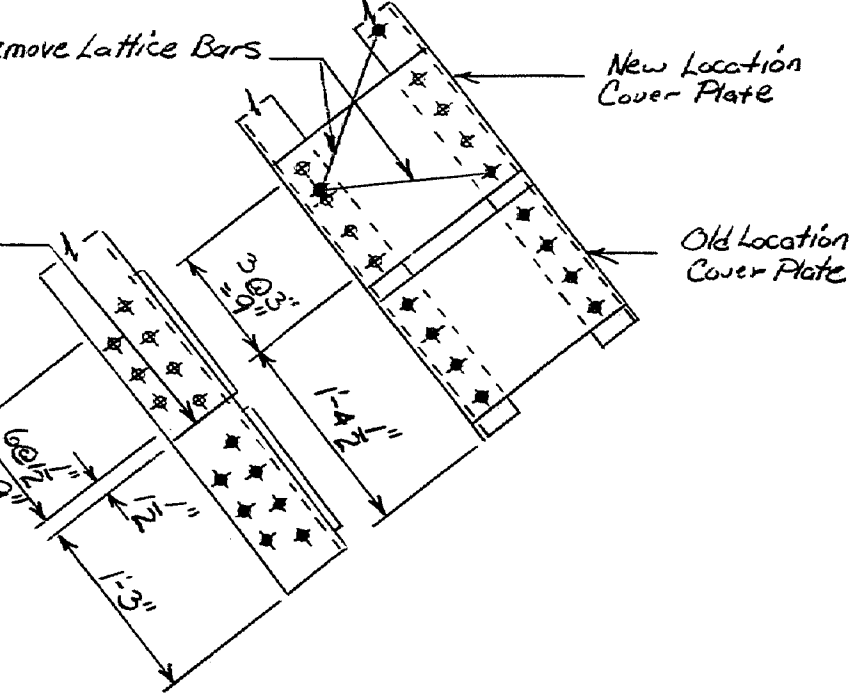
DETAIL D2



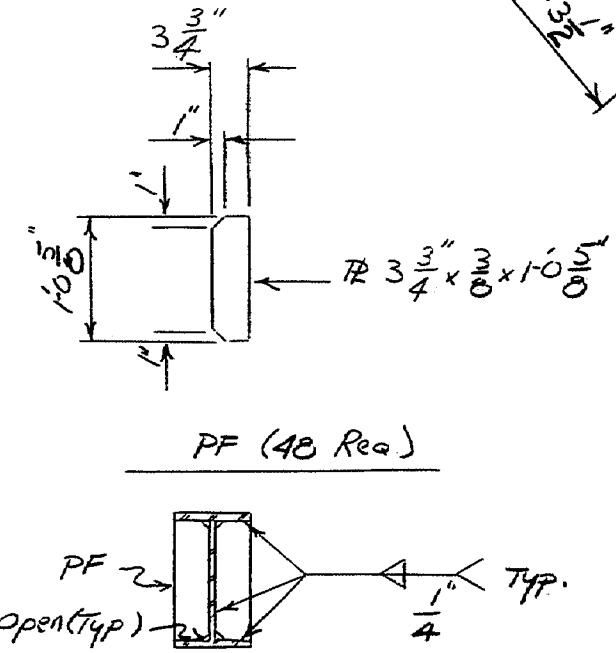
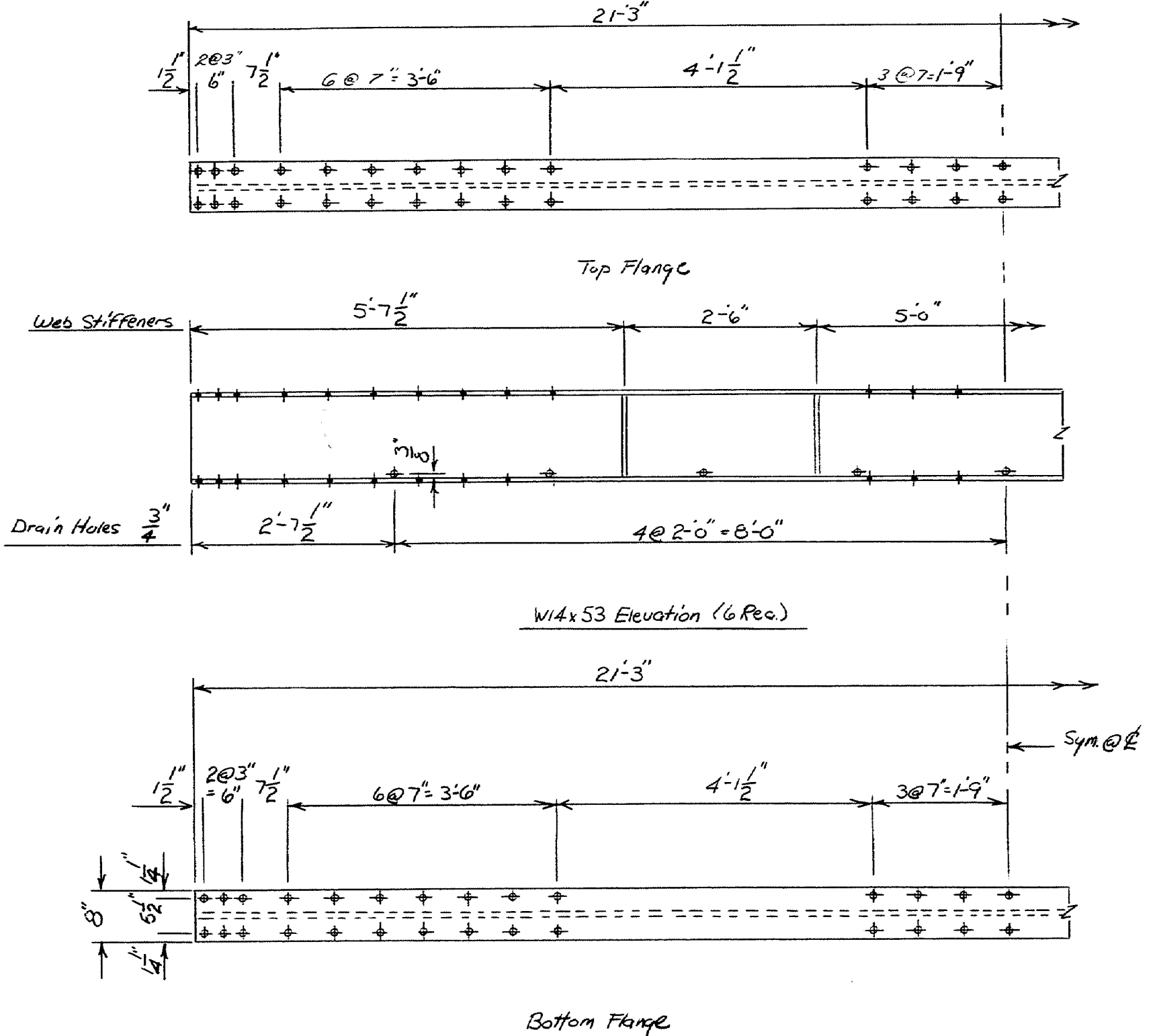
DETAIL D3



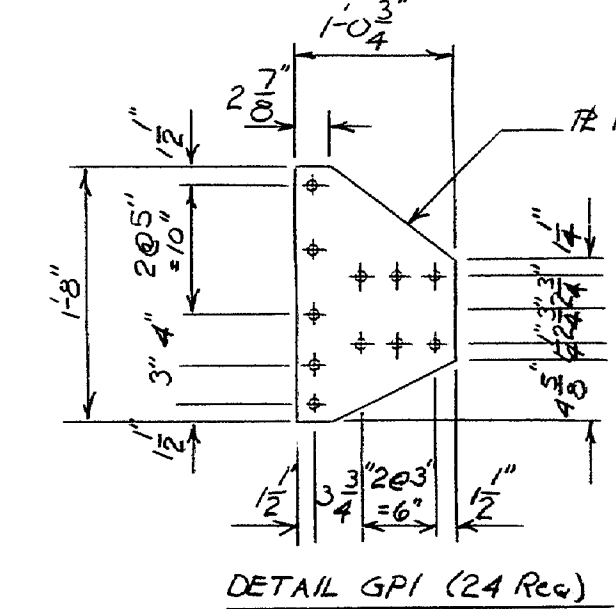
DETAIL GP3 (2 Req.)



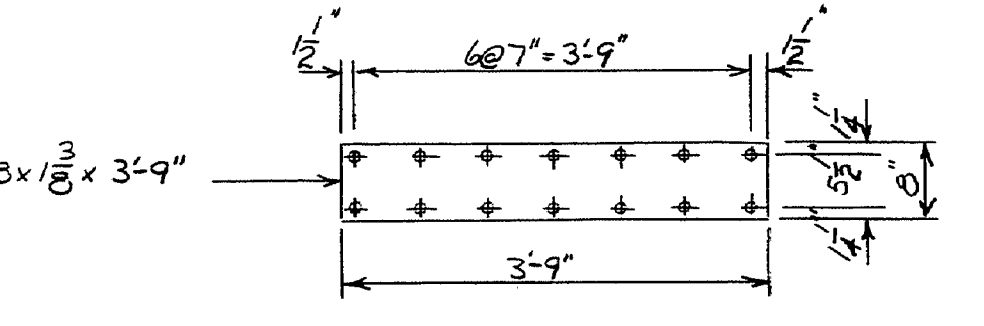
DETAIL FP3 (6 Req.)



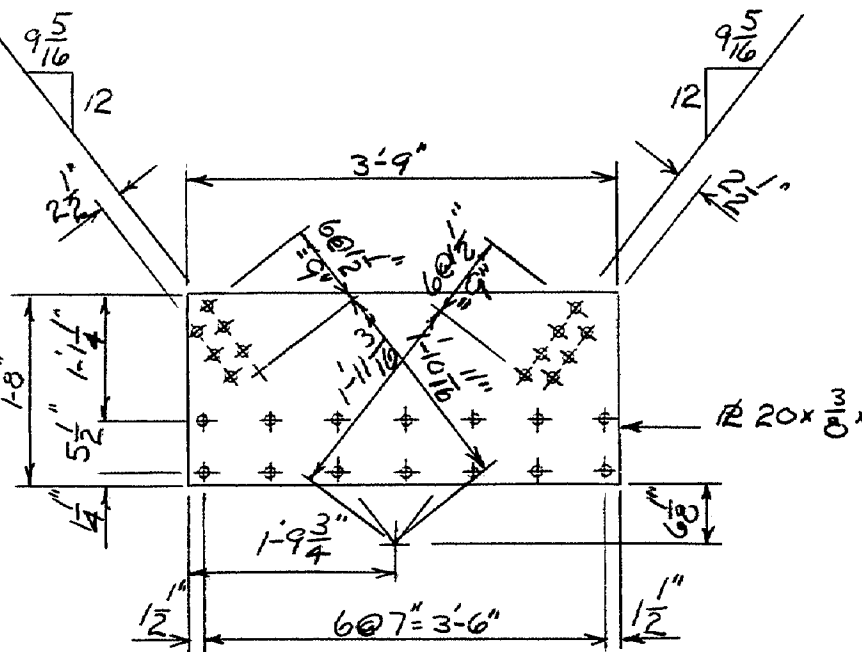
PF (40 Req.)



DETAIL GPI (24 Req.)



DETAIL FP2 (2 Req.)



DETAIL GP2 (24 Req.)

NOTES:
 New Holes To Be Drilled Using Gusset Plates As Templates After Erection of W14-53.
 Place Filler Plates Between Gusset Plate and Top Flange Or W14-53. Filler Plates Can Be Made Of Two Plates.
 * New $\frac{15}{16}$ Holes
 * Existing Holes
 Edge Distance $\frac{1}{2}$ " Unless Noted.
 Field Fabricate As Shown

STATE OF MAINE
 DEPARTMENT OF TRANSPORTATION
 PORTAL REVISION
 PISCATAQUIS RIVER BRIDGE
 IN THE TOWN OF
 HOWLAND

DATE	BY	DESIGN - DETAILED	CHECKED	REVISIONS	FIELD CHANGES
3-73	Dodge				
3-73	J.E. Morse				

PLANS