

Maine State Library

Digital Maine

---

Transportation Documents

Transportation

---

12-1-2003

## Oxford County Regional Airport, Oxford County, Maine : Master Plan Update, December 2003

Maine Department of Transportation

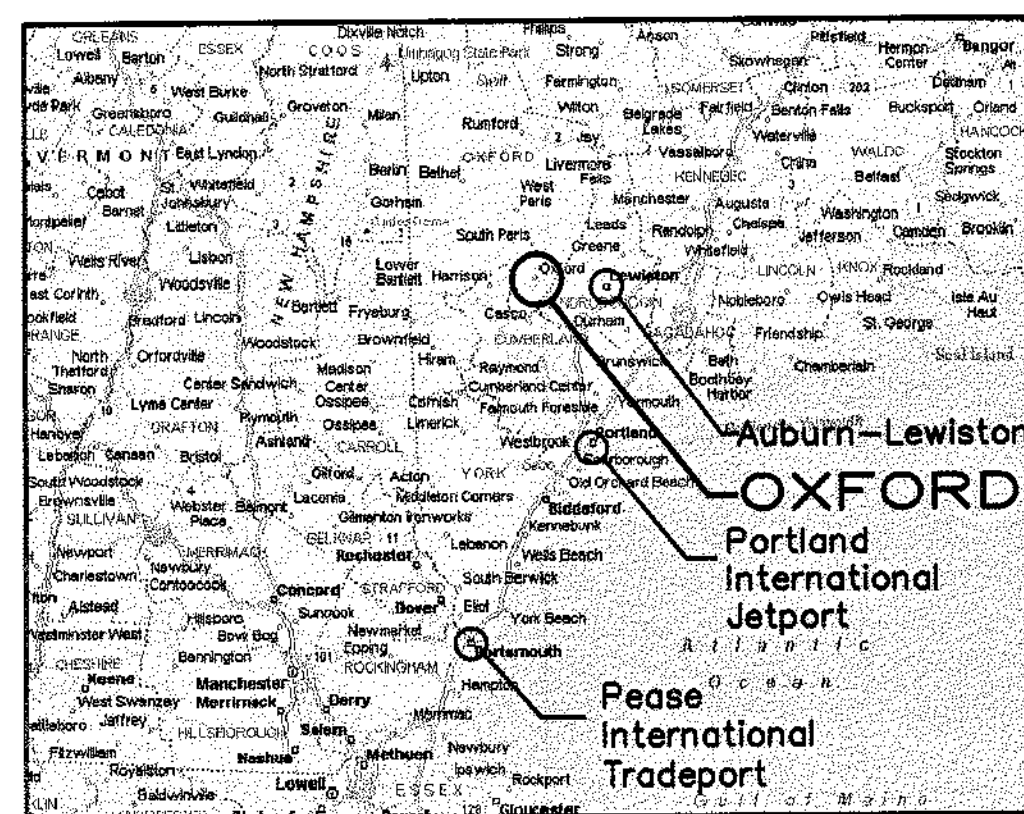
Follow this and additional works at: [https://digitalmaine.com/mdot\\_docs](https://digitalmaine.com/mdot_docs)

---

### Recommended Citation

Maine Department of Transportation, "Oxford County Regional Airport, Oxford County, Maine : Master Plan Update, December 2003" (2003). *Transportation Documents*. 1790.  
[https://digitalmaine.com/mdot\\_docs/1790](https://digitalmaine.com/mdot_docs/1790)

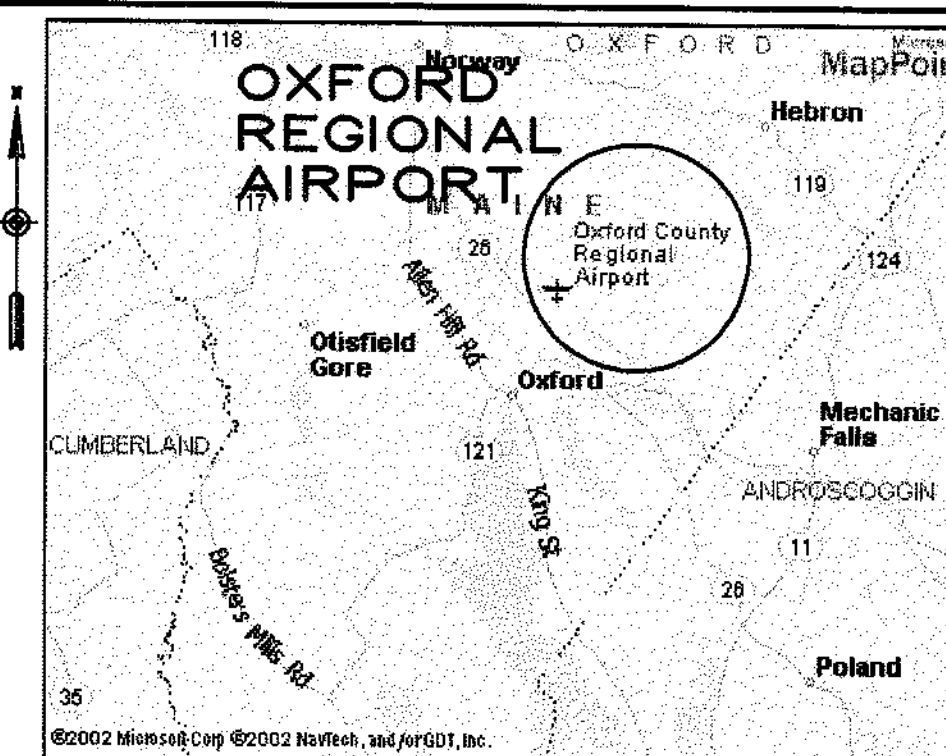
This Text is brought to you for free and open access by the Transportation at Digital Maine. It has been accepted for inclusion in Transportation Documents by an authorized administrator of Digital Maine. For more information, please contact [statedocs@maine.gov](mailto:statedocs@maine.gov).



**VICINITY MAP**  
NOT TO SCALE

# OXFORD COUNTY REGIONAL AIRPORT OXFORD COUNTY, MAINE

## MASTER PLAN UPDATE



**LOCATION MAP**  
NOT TO SCALE

**MAINE DEPARTMENT OF TRANSPORTATION**  
**STATE PROJECT NO. SAIP11.1029-02(12)**  
**FEDERAL PROJECT NO. AIP3-23-2300-02**

### INDEX TO DRAWINGS

1. COVER/TITLE SHEET
2. ALP (EXISTING FACILITIES)
3. ALP (ULTIMATE FACILITIES)
4. ALP DATA SHEET
5. TERMINAL AREA PLAN
6. RUNWAY 15-33  
PLAN AND PROFILE
7. FAR PART 77 AIRSPACE  
SURFACES AND TERMINAL INSTRUMENT  
PROCEDURES SURFACES (TERPS)  
FINAL APPROACH SEGMENT  
FOR BOTH RUNWAYS
8. LAND USE AND NOISE CONTOUR PLAN

**DECEMBER, 2003**

REVISIONS		BY		DESCRIPTION	
REV. NO.	DATE				
1					
STATE PROJECT NO.		SAIP11.1029-02(12)		FEDERAL PROJECT NO.	
AIP3-23-2300-02					
PROJECT DESIGNER		HTA		JRL	
Hoyle, Tanner & Associates, Inc.		Consulting Engineers		TDB	
150 DOW STREET - MANCHESTER, NH 03101 - 1227		DES. BY		KRS	
Tel: (603) 689-5555 Fax: (603) 689-4166 WEB PAGE: www.hta-nh.com		CHKD. BY		JRL	
SCALE: AS SHOWN		DATE: DECEMBER, 2003			
OXFORD COUNTY REGIONAL AIRPORT AIRPORT MASTER PLAN UPDATE		COVER/TITLE SHEET			
HTA PROJ. No.: 302902.03					
OxfCV01.dwg					
DRAWING NO.					
1					
SHEET 1 of 8					

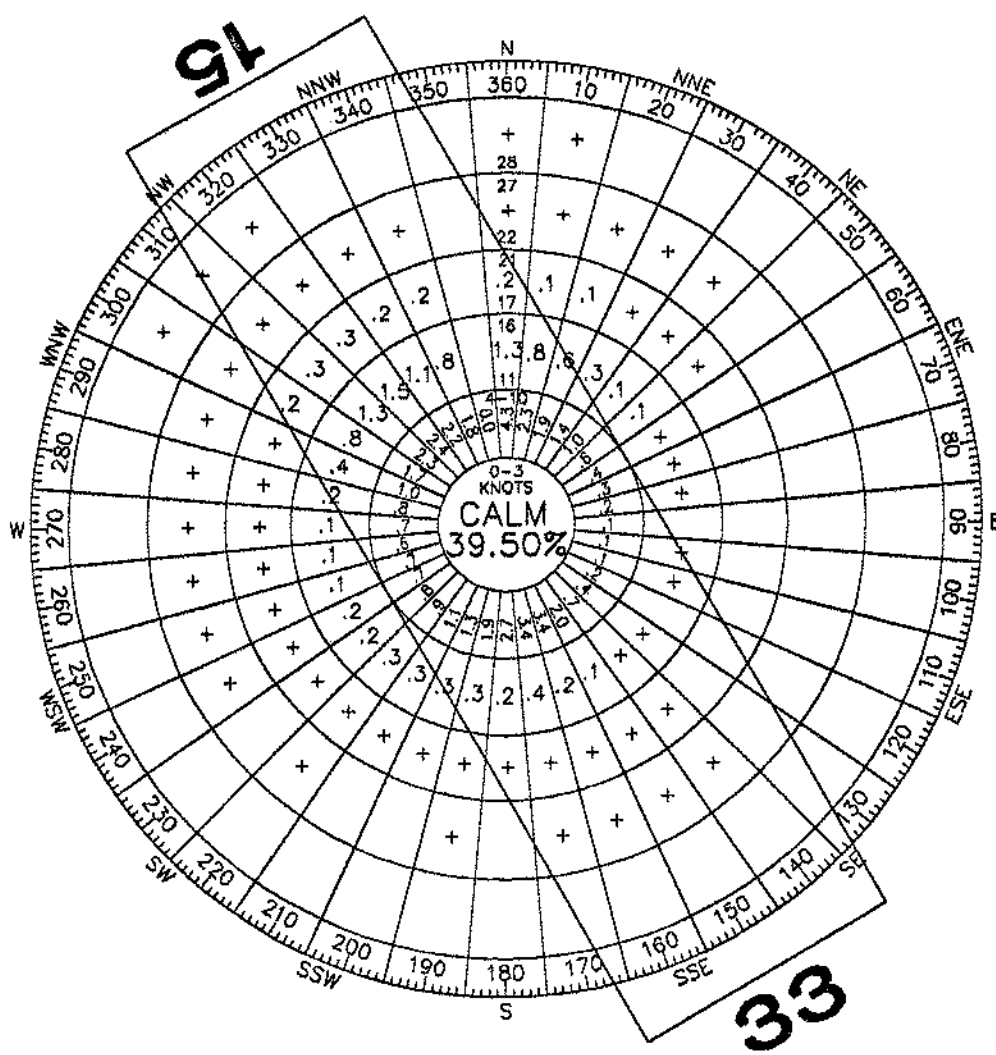








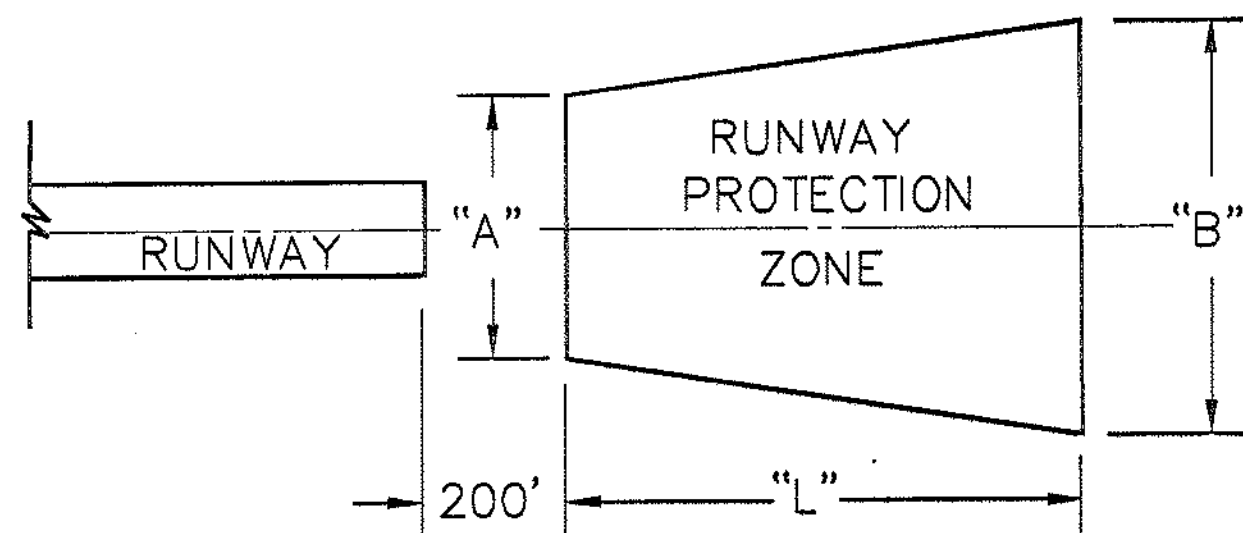




ALL WEATHER WIND ROSE

WIND DATA SUMMARY			
CROSSWIND COVERAGE (KNOTS)	R/W 15-33	R/W 15	R/W 33
10.5	97.20 %	95.70 %	87.50 %

STATION: AUBURN-LEWISTON, ME #72618  
SOURCE: NATIONAL CLIMATIC DATA CENTER/NATIONAL OCEANIC AND ATMOSPHERIC ADMINISTRATION  
PERIOD OF OBSERVATION: 1993-2002  
OBSERVATIONS: 80,669

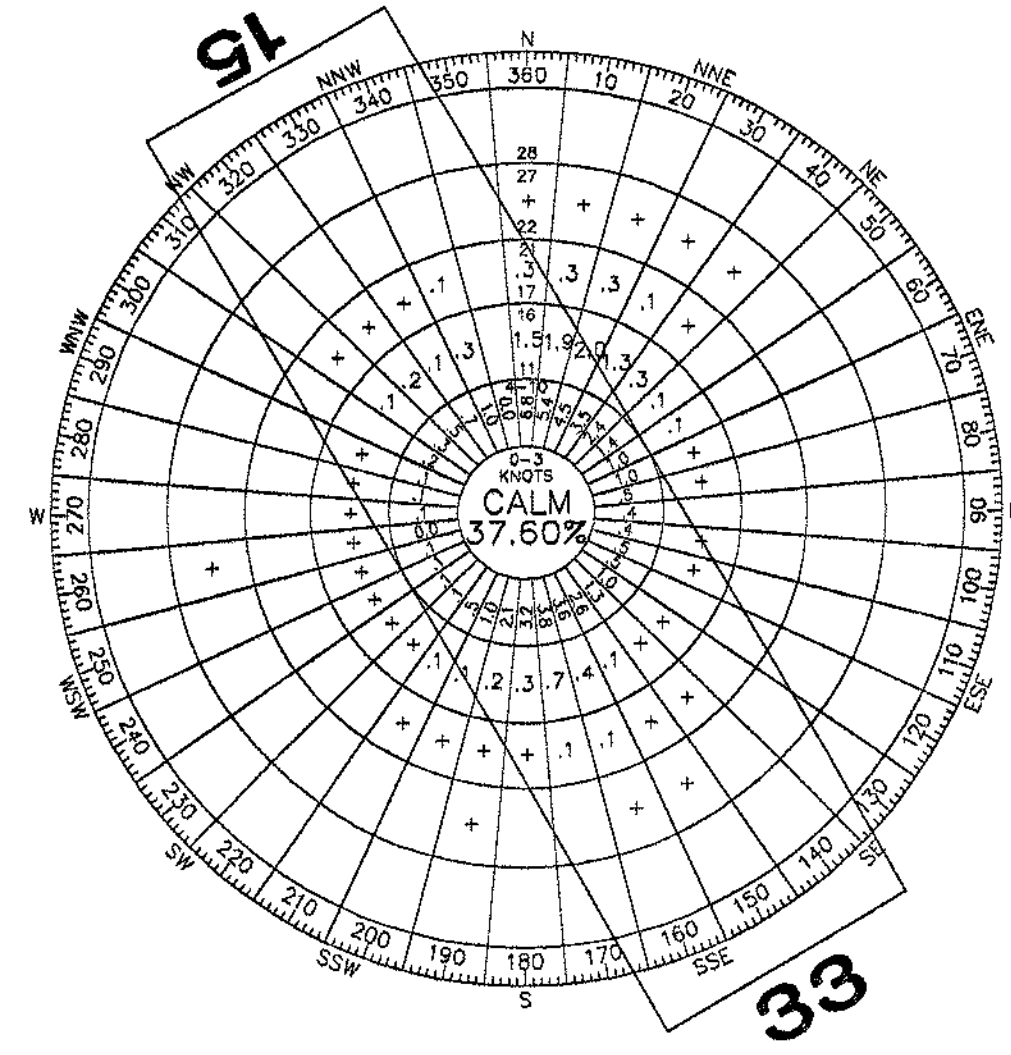


RUNWAY PROTECTION ZONE DATA					
	RUNWAY	APPROACH CATEGORY	"L"	"A"	"B"
FUTURE (o)	15	NON-PRECISION	SAME	SAME	SAME
	33	SAME	SAME	SAME	SAME
EXISTING (o)	15	VISUAL	1,000	500	700
	33	NON-PRECISION	1,000	500	700

NOTE:  
(o) APPROACH MINIMUMS NOT LOWER THAN 1-MILE FOR BOTH RUNWAYS

APPROACH SLOPE DATA			
	RUNWAY	APPROACH CATEGORY	APPROACH SLOPE
FUTURE	15	NON-PRECISION	SAME
	33	SAME	SAME
EXISTING	15	VISUAL	20:1 (1)
	33	NON-PRECISION	20:1 (1)

NOTE:  
(1) THE RUNWAY IS CLASSIFIED AS UTILITY, THEREFORE, THE APPROACH SLOPE IS THE SAME FOR BOTH RUNWAYS ACCORDING TO FAR PART 77



IFR WIND ROSE

WIND DATA SUMMARY			
CROSSWIND COVERAGE (KNOTS)	R/W 15-33	R/W 15	R/W 33
10.5	96.20 %	94.00 %	90.60 %

STATION: AUBURN-LEWISTON, ME #72618  
SOURCE: NATIONAL CLIMATIC DATA CENTER/NATIONAL OCEANIC AND ATMOSPHERIC ADMINISTRATION  
PERIOD OF OBSERVATION: 1993-2002  
OBSERVATIONS: 8,088

AIRPORT ABUTTERS			
MAP	LOT NO.	OWNER	BOOK/PAGE
R10	41	TWITCHELL, ALBERTA	761/228
R10	50	SCHMIDT, GEORGE & ELIZABETH	2637/017
R10	52A	THE UNIVERSITY OF MAINE FOUNDATION	2780/136
R10	56A	OXFORD HOMES, INC	3052/99
R10	56B	OXFORD HOMES, INC	1704/091
R10	57	FIDDLEHEAD PARTNERS/SCHIAVI ENTERPRISES	1596/350
R10	57A	AIRPORT - INHABITANTS OF THE COUNTY OF OXFORD	780/079
R10	57A	AIRPORT LEASE - BANCROFT CONSTRUCTION CORP.	N/A
R10	57B	SCHIAVI, JOHN & ELEANOR	1035/249
R10	58	TWITCHELL, ALBERTA	761/228 & 230
R10	59	TWITCHELL, ROGER P.	584/549
R7	5-3	LEONARD, WILFRED SR. & LORRIANE C.	2487/202
R7	29	PIKE, LYNN CUMMINGS	1415/154
R7	39	KYLLONEN, WILHO V	1347/174
R7	41	LANDRY, DANIEL & DONNA	1374/193
R7	41-7	SCHIAVI PROPERTIES	1449/182
R7	42	WYMAN, ROBERT L. JR.	NOT RECORDED
R7	42A	OXFORD DEVELOPMENT CORP.	3110/314

NOTE: AVIGATION AND HAZARD EASEMENTS ARE LISTED ON THE EXHIBIT "A" DRAWING DATED DECEMBER 1991.

AIRPORT DESIGN CRITERIA: BI					
DESIGN ELEMENT	DESIGN CRITERIA (FT)	RUNWAY 15-33			
		EXISTING		FUTURE	
RUNWAY					
LENGTH	SEE NOTE 1	3,000		SAME (2)	
WIDTH	60	75		SAME	
RUNWAY 15					
RUNWAY SAFETY AREA (RSA)		EXISTING	FUTURE	EXISTING	FUTURE
WIDTH	120	120	SAME	120	SAME
LENGTH BEYOND RUNWAY END	240	240	SAME	240	SAME
RUNWAY OBSTACLE FREE ZONE (ROFZ)					
WIDTH	250	250	SAME	250	SAME
LENGTH BEYOND RUNWAY END	200	200	SAME	200	SAME
RUNWAY OBSTACLE FREE AREA (ROFA)					
WIDTH	400	SEE NOTE 3	400	SEE NOTE 3	400
LENGTH BEYOND RUNWAY END	240	240	SAME	240	SAME
TAXIWAY/TAXILANE					
WIDTH	25	TAXIWAY A = 40	SAME	TAXIWAY A = 40	SAME
		TAXIWAY B = 25	SAME	TAXIWAY B = 25	SAME
		PARALLEL TAXIWAY C = 25 (4)		PARALLEL TAXIWAY C = 25 (4)	
TAXIWAY SAFETY AREA (TSA)	49	49	SAME	49	SAME
TAXIWAY OBJECT FREE AREA (TOFA) WIDTH	89	89	SAME	89	SAME
TAXILANE OBJECT FREE AREA WIDTH	79	79	SAME	79	SAME
RUNWAY SEPARATION STANDARDS					
RUNWAY CENTERLINE TO TAXIWAY/TAXILANE CENTERLINE	225	N/A	225 (4)	N/A	225 (4)
RUNWAY CENTERLINE TO AIRCRAFT PARKING AREA	200	150	200	150	200
TAXIWAY/TAXILANE SEPARATION STANDARDS					
TAXIWAY CENTERLINE TO PARALLEL TAXIWAY/TAXILANE CENTERLINE	69	N/A	69 (4)	N/A	69 (4)
TAXIWAY CENTERLINE TO A FIXED OR MOVABLE OBJECT	44.5	N/A	44.5 (4)	N/A	44.5 (4)
TAXILANE CENTERLINE TO PARALLEL TAXILANE CENTERLINE	64	N/A	N/A	N/A	N/A
TAXILANE CENTERLINE TO A FIXED OR MOVABLE OBJECT	39.5	N/A	N/A	N/A	N/A

NOTES:

- SEE FURTHER DISCUSSION IN CHAPTER 3 - DEMAND/CAPACITY & FACILITY REQUIREMENTS, SECTION 2.1.2 - RUNWAY LENGTH, OF THE AUGUST 2003 AIRPORT MASTER PLAN UPDATE REPORT.
- THE RUNWAY LENGTH WOULD ONLY CHANGE IF THE RUNWAY WERE TO BE EXTENDED VIA THE USE OF PRIVATE FUNDS
- TIEDOWNS LOCATED ON THE TERMINAL APRON, LOCATED ON THE WEST SIDE OF THE RUNWAY, IMPACT THE OFA WIDTH. HOWEVER, THE EAST SIDE OF THE RUNWAY MEETS THE OFA WIDTH REQUIREMENT.
- PROPOSED PARALLEL TAXIWAY DESIGNED TO MEET SEPARATION CRITERIA

OXFORD COUNTY REGIONAL AIRPORT  
AIRPORT MASTER PLAN UPDATE

PROJECT DESIGNER  
**Hoyle, Tanner & Associates, Inc.**

150 DOW STREET - MANCHESTER, NH 03101 - 1227  
Tel: (603) 669-5555 Fax: (603) 669-4168  
www.hta-nh.com

ALP DATA SHEET

HTA PROJ. No.: 302902.03  
0x1DS04.dwg

DRAWING NO.

4

SHEET 4 OF 8

REV

REVISIONS

BY DESCRIPTION

STATE PROJECT NO.

SAP11:1029-02(12)

FEDERAL PROJECT NO.

AP3-73-2300-02

HTA  
Consulting Engineers

CHKD. BY

JRL

DR. BY

TDB

DES. BY

KRS

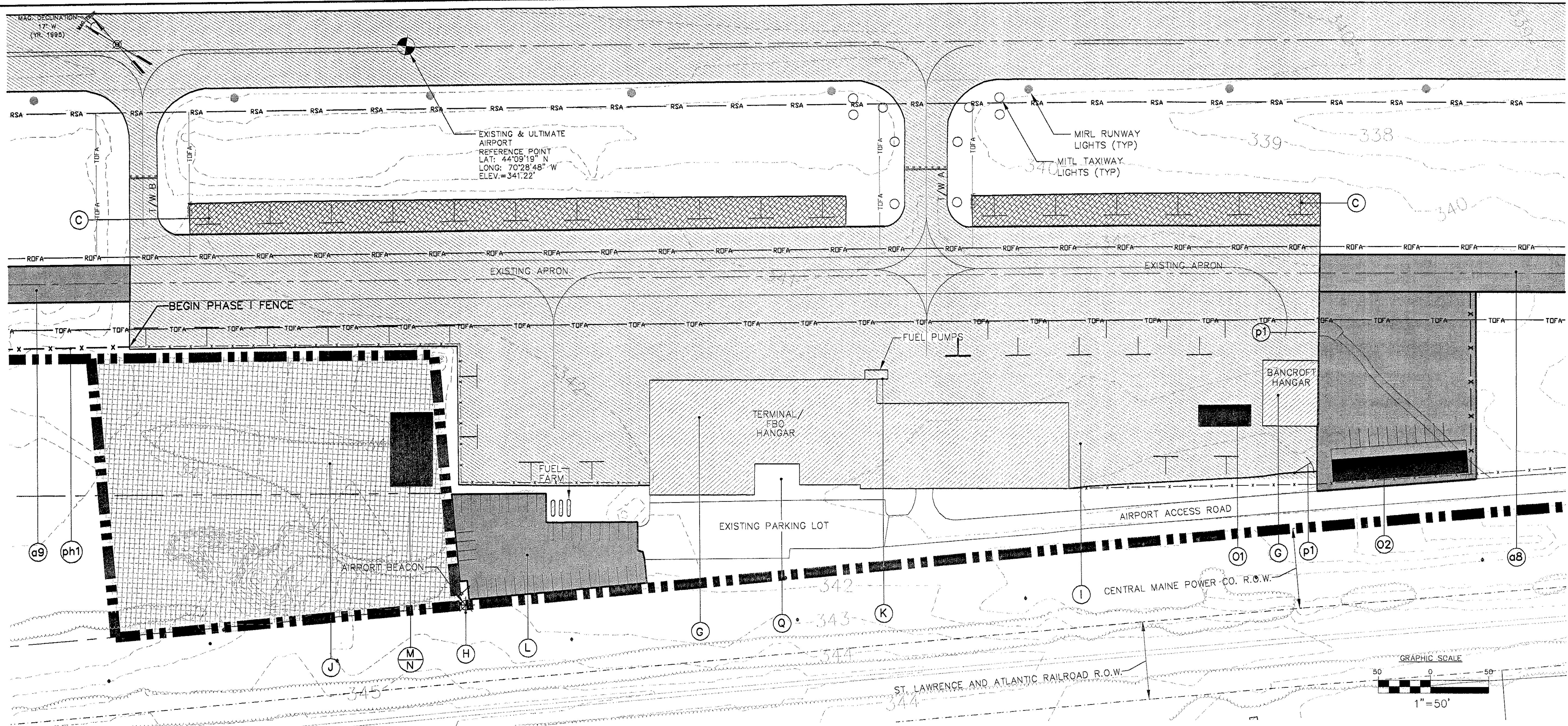
DATE:

DECEMBER, 2003

SCALE:

AS SHOWN



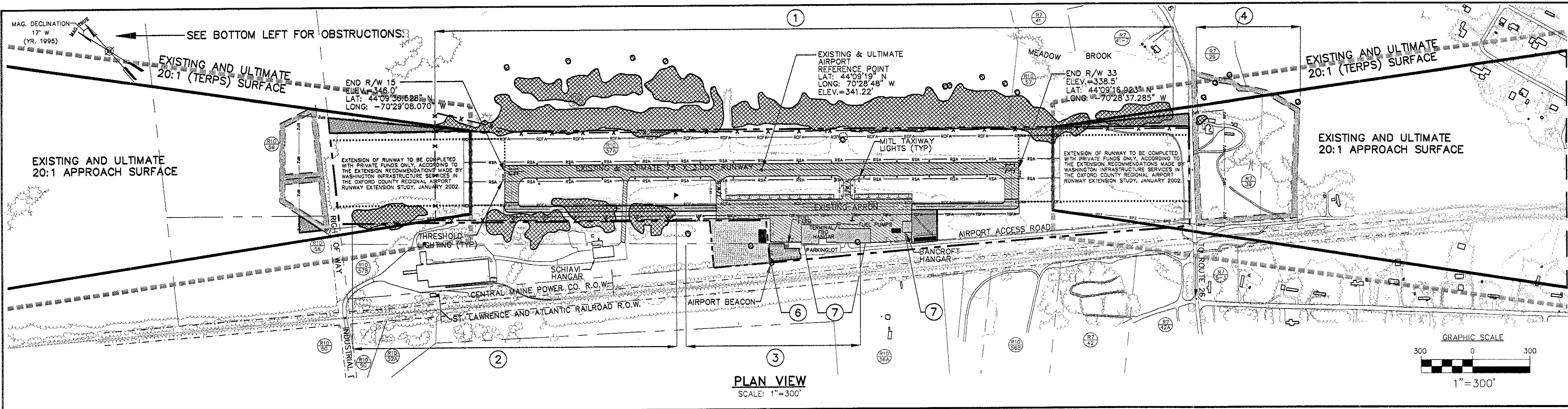


LEGEND			
SYMBOL	DESCRIPTION	SYMBOL	DESCRIPTION
	ROAD PAVEMENT EDGE		AIRPORT BEACON
	RUNWAY/TAXIWAY PAVEMENT EDGE		EXISTING TIE DOWN
	EXISTING PAVEMENT		FUTURE TIE DOWN
	EXISTING TREE LINE		RUNWAY SAFETY AREA
	EXISTING CONTOUR (TYP)		RUNWAY OBJECT FREE AREA
	EXISTING BUILDING WITHIN AIRPORT PROPERTY		ULTIMATE TAXIWAY OBJECT FREE AREA (89')
	PROPOSED BUILDING/DEVELOPMENT		EXISTING TAXIWAY OBJECT FREE AREA (89')
	AIRPORT PROPERTY LINE		PROPERTY ACQUISITION
	ABUTTING PROPERTY LINES		TO BE REMOVED
	RIGHT OF WAY		NEW PAVEMENT DEVELOPMENT AREA
	EXISTING FENCELINE		
	FUTURE FENCELINE		
	RUNWAY/TAXIWAY CENTERLINE		

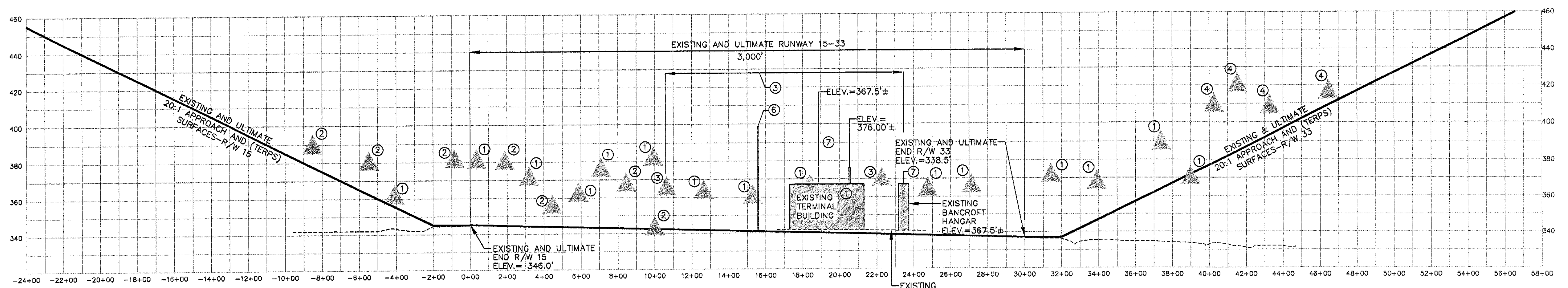
TERMINAL DEVELOPMENT	
a8	Construct a parallel taxiway (Phase I) to access Runway 15-33 from Taxiway B to the approach end of Runway 33
a9	Construct a parallel taxiway (Phase II) to access Runway 15-33 from Taxiway B to the approach end of Runway 15
C	Improve runway object free area (OFA) and runway separation standards by removing the 17 tie-downs located on the terminal apron, which covers approximately 1-acre. Convert approximately 1-acre of apron to turf
G	Install obstruction lights on both the terminal building and the privately owned conventional hangar owned by Bancroft
H	Rehabilitate the rotating beacon
I	Rehabilitate the terminal apron pavement and modify drainage
J	Purchase additional property on the west side of the airport to accommodate future aircraft t-hangars and conventional hangars
K	Provide a self-service fuel pump with credit card capabilities to allow for 24-hour access to fuel
L	Extend the automobile parking lot to the northwest providing a total of 39 additional parking spaces
M	Purchase snow removal equipment
N	Construct a snow removal equipment facility
O	Construct a small terminal facility
O1	Construct a small terminal facility: Option 1
O2	Construct a small terminal facility: Option 2
P	Install airport security fencing around the airport operations area (AOA) in four phases avoiding wetlands (ph1, ph2, ph3, and ph4)
p1	Install an electric key card access gate for tenant access to the airport
Q	Improve existing or install new airport signs on and off of airport property and upgrade landscaping

REVISIONS BY DATE REV NO.		STATE PROJECT NO. SAPI11-1029-02(12)	FEDERAL PROJECT NO. AIP3-23-2300-02
PROJECT DESIGNER <b>Hoyle, Tanner &amp; Associates, Inc.</b> 150 DOW STREET - MANCHESTER, NH 03101-1227 Tel: (603) 669-5555 Fax: (603) 669-4168 WEB PAGE: www.hta-nh.com		DR. BY TDB	DES. BY KRS
SCALE: AS SHOWN DATE: DECEMBER, 2003		CHKD. BY JRL	REV 5
OXFORD COUNTY REGIONAL AIRPORT AIRPORT MASTER PLAN UPDATE		TERMINAL AREA PLAN	
HTA PROJ. No.: 302902.03 OxtERM.dwg		DRAWING NO.	
SHEET 5 OF 8		REV	

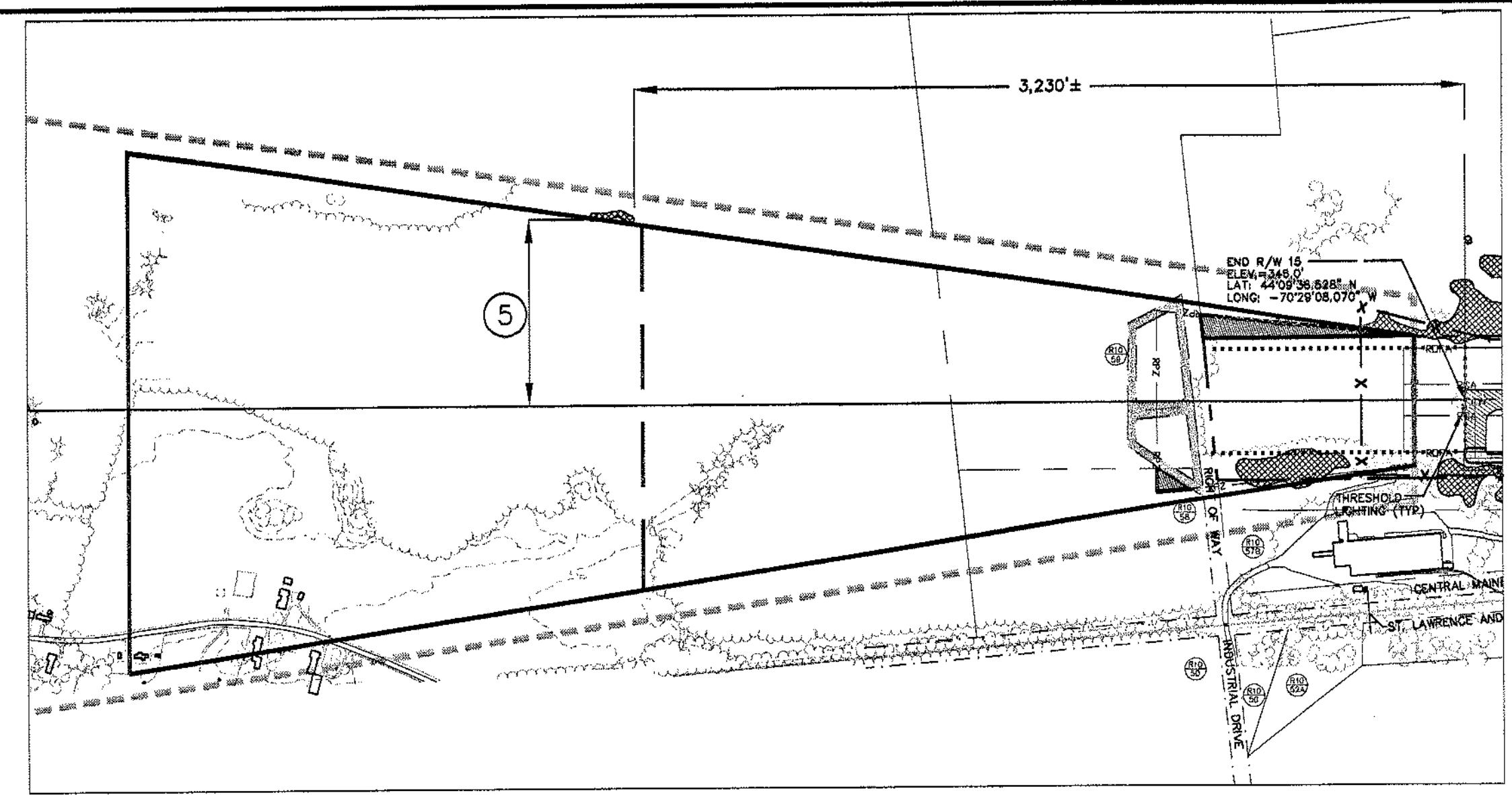




PLAN VIEW  
SCALE: 1"=300'



PROFILE  
SCALE: 1"=300' H  
1"=30' V



PLAN VIEW  
SCALE: 1"=500'

NOTES:  
1. OBSTRUCTION DATA PROVIDED BY MAINE D.O.T.  
2. TREE SYMBOLS SHOWN IN PROFILE REPRESENT MULTIPLE OBSTRUCTIONS, NOT INDIVIDUAL OBSTRUCTIONS, WITHIN THESE AREAS.

FAR PART 77 PENETRATIONS	
1	TREE PENETRATIONS THROUGH 7:1 TRANSITION SURFACES. STA. -4+00 TO STA. 39+00, 200' TO 650' LEFT.
2	TREE PENETRATIONS THROUGH 7:1 TRANSITION SURFACES. STA. -8+00 TO STA. 10+00, 175' TO 400' RIGHT, TO BE CLEARED FOR ULTIMATE DEVELOPMENT.
3	TREE PENETRATIONS THROUGH 7:1 TRANSITION SURFACES. STA. 10+50 TO STA. 20+75, 400' TO 500' RIGHT, TO BE CLEARED FOR ULTIMATE DEVELOPMENT.
4	TREE PENETRATIONS THROUGH 7:1 TRANSITION SURFACES AND APPROACH SURFACE. STA. 38+50 TO STA. 46+50, 400' TO 500' LEFT.
5	TREE PENETRATIONS THROUGH 7:1 TRANSITION SURFACES. APPROX. 3,230' FROM END OF RUNWAY 15, 700' LEFT.
6	AIRPORT BEACON, ELEVATION=399'. STA. 15+50, 330' RIGHT.
7	PRIMARY SURFACE WIDTH HAS INCREASED FROM 250' TO 500' DUE TO THE IMPLEMENTATION OF GPS FOR RUNWAY 33. THEREFORE, EXISTING TERMINAL BUILDINGS AND THE BANCROFT HANGAR ARE PENETRATIONS THROUGH 7:1 TRANSITION SURFACES. REFER TO CHAPTER 5, ALTERNATIVE DEVELOPMENT OF THE 2003 AIRPORT MASTER PLAN UPDATE.

LEGEND	
SYMBOL	DESCRIPTION
[Symbol]	ROAD PAVEMENT EDGE
[Symbol]	RUNWAY PAVEMENT EDGE
[Symbol]	RUNWAY CENTERLINE
[Symbol]	EXISTING PAVEMENT
[Symbol]	NEW PAVEMENT/DEVELOPMENT
[Symbol]	EXISTING TREE LINE
[Symbol]	EXISTING CONTOUR (TYP)
[Symbol]	EXISTING BUILDING WITHIN AIRPORT BOUNDARY
[Symbol]	EXISTING BUILDING OUTSIDE AIRPORT BOUNDARY
[Symbol]	FUTURE BUILDINGS WITHIN AIRPORT DEVELOPMENT
[Symbol]	AIRPORT PROPERTY LINE
[Symbol]	ABUTTING PROPERTY LINES
[Symbol]	RIGHT OF WAY
[Symbol]	EXISTING AVIATION EASEMENT AREA
[Symbol]	EXISTING FENCELINE
[Symbol]	FUTURE FENCELINE
[Symbol]	FUTURE EXTENSION OF RUNWAY. SEE NOTE IN PLANVIEW.
[Symbol]	PENETRATIONS THROUGH FAR-PART 77 SURFACES
[Symbol]	APPROACH SURFACES - SEE SHEET 7 OF 8 FOR ADDITIONAL INFO.
SYMBOL	DESCRIPTION
[Symbol]	SEGMENTED CIRCLE/LIGHTED WINDSOCK
[Symbol]	AIRPORT BEACON
[Symbol]	EXISTING PAVED TIE DOWN
[Symbol]	FUTURE PAVED TIE DOWN
[Symbol]	EXISTING AND ULTIMATE RUNWAY PROTECTION ZONE
[Symbol]	EXISTING AND ULTIMATE RUNWAY SAFETY AREA
[Symbol]	EXISTING AND ULTIMATE RUNWAY OBJECT FREE AREA
[Symbol]	EXISTING TAXIWAY OBJECT FREE AREA (89')
[Symbol]	ULTIMATE TAXIWAY OBJECT FREE AREA (89')
[Symbol]	TOWN OF OXFORD MAP & LOT# (SEE SHEET 4 OF MASTER PLAN SET FOR PROPERTY OWNERSHIP).
[Symbol]	FUTURE PROPERTY ACQUISITION
[Symbol]	AREA OF REQUIRED EASEMENTS
[Symbol]	TO BE REMOVED
[Symbol]	(TERPS) SURFACES - SEE SHEET 7 OF 8 FOR ADDITIONAL INFO.

REVISIONS

REV.	DATE	BY	DESCRIPTION

STATE PROJECT NO. SAIP11-1029-02(12)  
FEDERAL PROJECT NO. AP3-23-2300-02

PROJECT DESIGNER  
**Hoyle, Tanner & Associates, Inc.**  
150 DOW STREET - MANCHESTER, NH 03101 - 1227  
Tel: (603) 668-5555 Fax: (603) 668-4168 WEB PAGE: www.hta-nh.com

DR. BY TDB  
DES. BY KRS  
DATE: DECEMBER, 2003  
SCALE: AS SHOWN

OXFORD COUNTY REGIONAL AIRPORT  
AIRPORT MASTER PLAN UPDATE

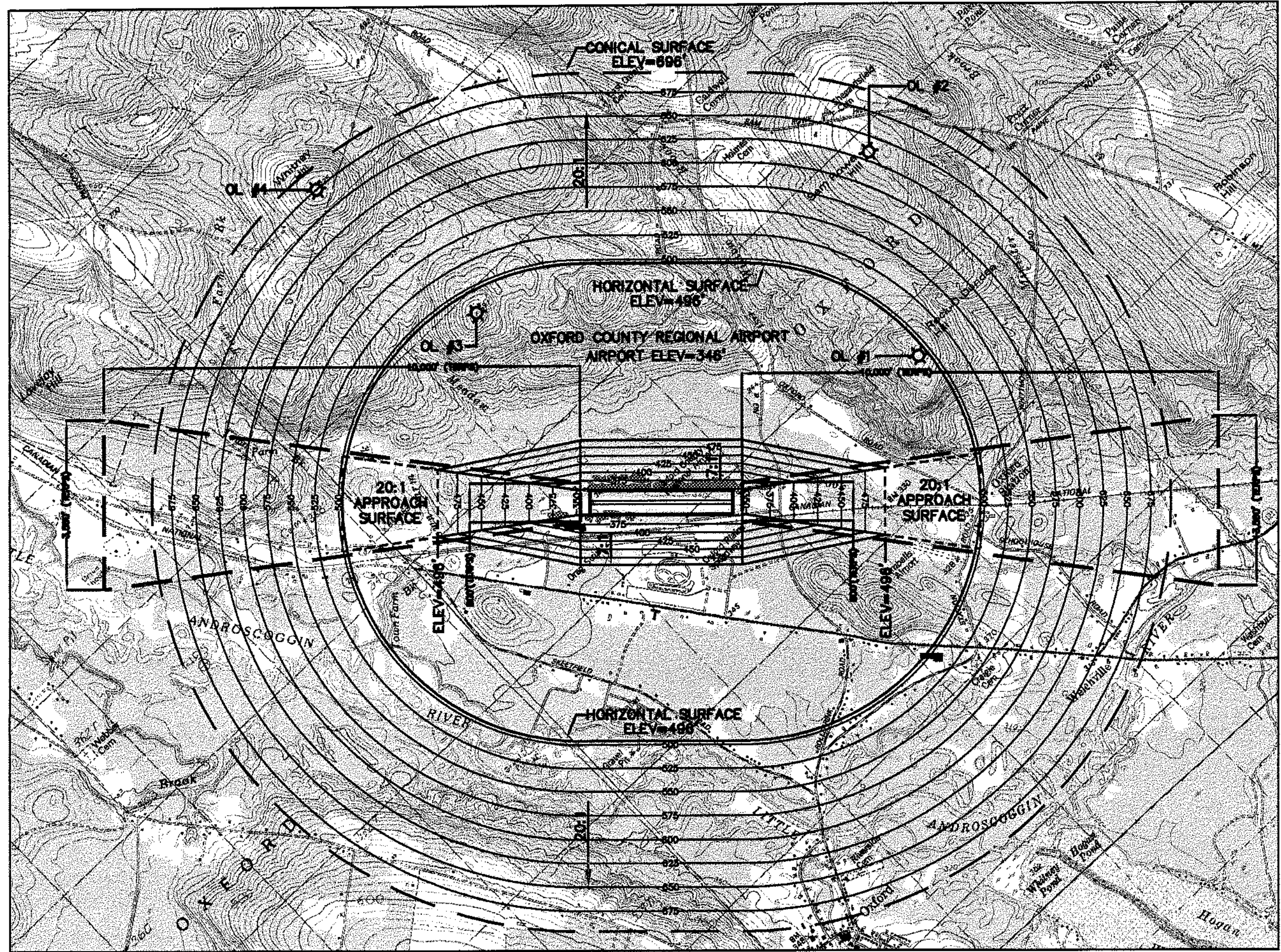
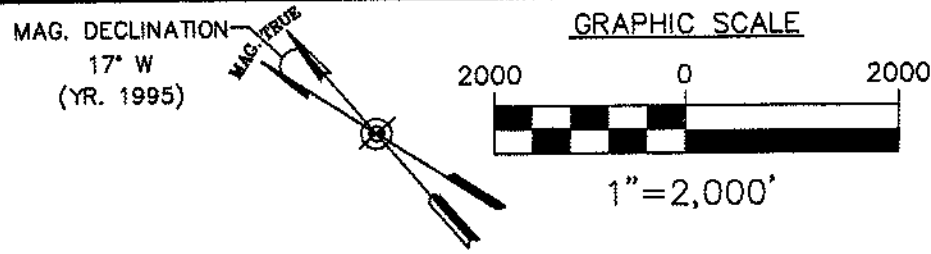
**RUNWAY 15-33**  
**PLAN AND PROFILE**

HTA PROJ. No.: 302902.03  
OxIPLR.dwg

DRAWING NO.  
**6**

SHEET 6 OF 8



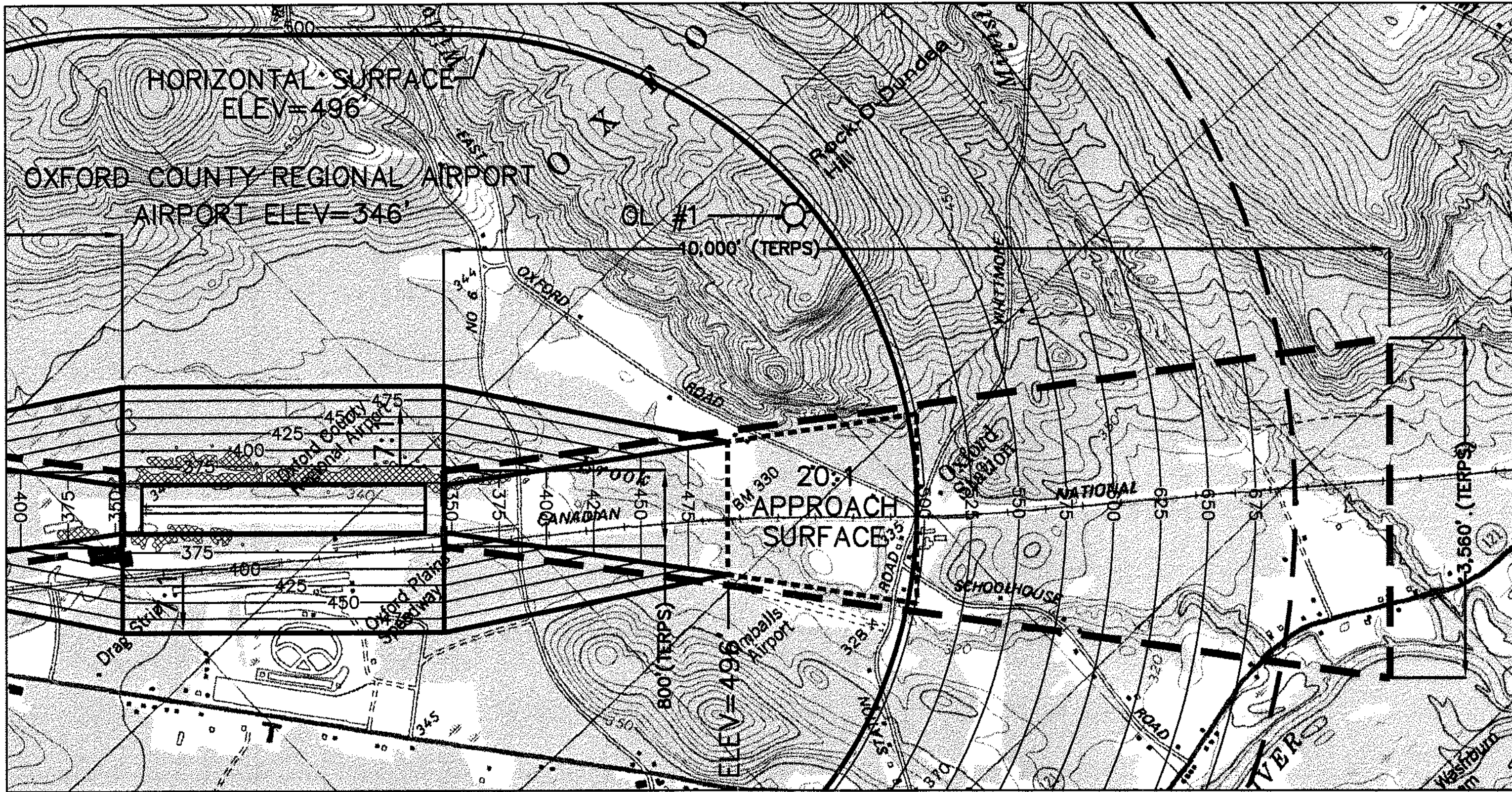
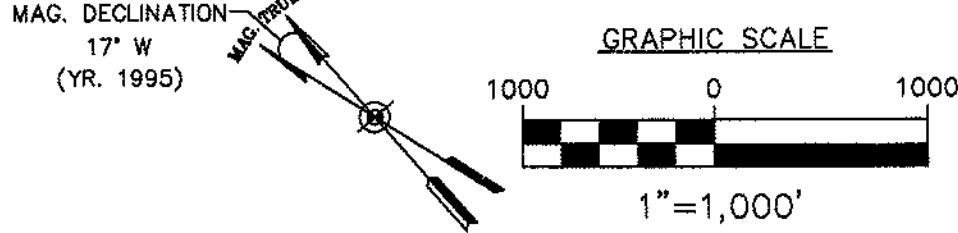


PLAN VIEW - FAR PART 77 AND (TERPS)  
SCALE: 1"=2,000'

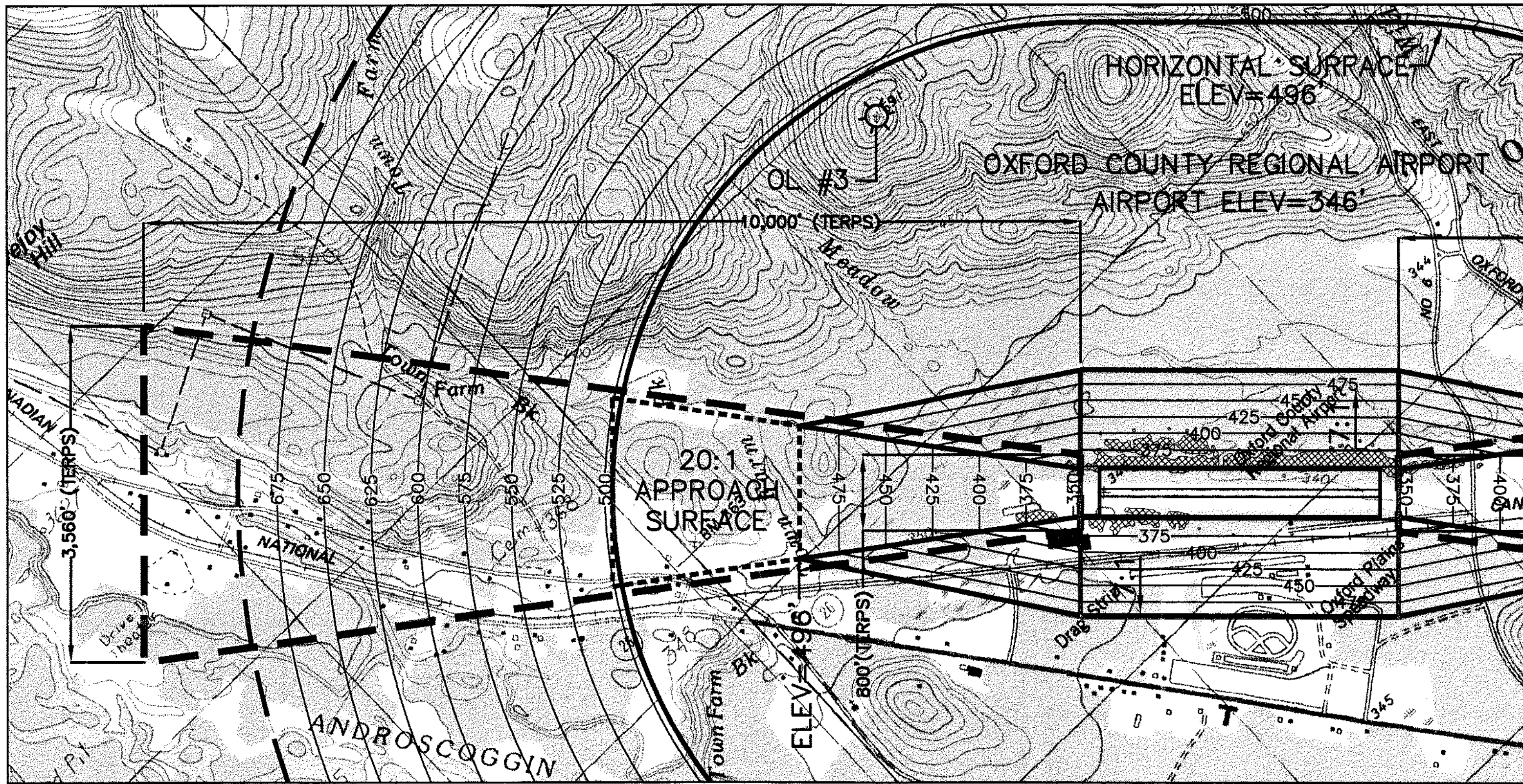
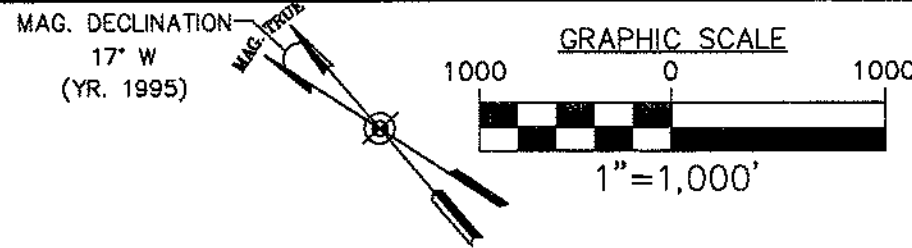
Part 77 Ultimate Airspace Surfaces / Oxford County Regional Airport		
Airport Data		
Classification	Runway 15 (1)	Runway 33 (1)
Approach	Non-precision	Non-precision
Visibility Minimums	1 mile	1 mile
Airport Elevation		346
Airport Imaginary Surfaces		
Horizontal Surface:	Runway 15 (1)	Runway 33 (1)
Horizontal Surface Elevation	496	5,000
Horizontal Surface Radius	5,000	5,000
Conical Surface:		
Horizontal Distance	4,000	4,000
Slope	20:1	20:1
Primary Surface:		
Length beyond runway end	200	200
Width	500	500
Approach Surface:		
Horizontal Distance	5,000	5,000
Inner Edge Width	500	500
Outer Edge Width	2,000	2,000
Slope	20:1	20:1
Transitional Surfaces:	7:1	7:1
Source: FAR Part 77, Objects Affecting Navigable Airspace		
Notes:		
1. Dimensions are in feet unless otherwise noted		

NOTE:  
SEE SHEET 6 (PLAN & PROFILE) OF THIS SET  
FOR PENETRATIONS THROUGH FAR PART 77  
SURFACES WITHIN THE AIRPORT.

LEGEND			
SYMBOL	DESCRIPTION	SYMBOL	DESCRIPTION
—	CONICAL SURFACE	—	APPROACH SURFACE ABOVE HORIZONTAL SURFACE ELEVATION
—	HORIZONTAL SURFACE	—	APPROACH SURFACE
—	SURFACE ELEVATION CONTOUR	—	(TERPS) SURFACE
—	FAR PART 77 SURFACE PENETRATIONS		
—	EXISTING OBSTRUCTION LIGHTS		



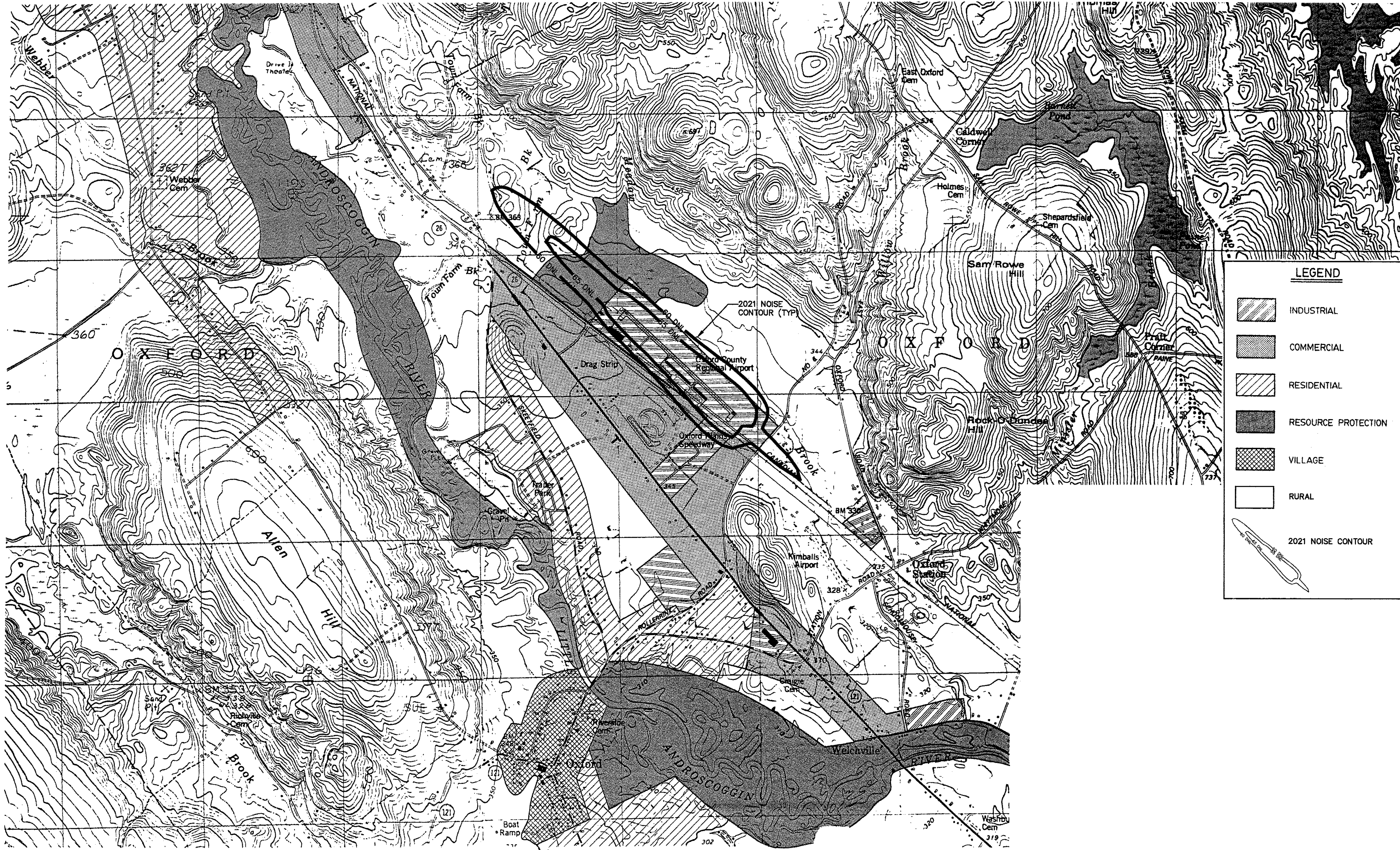
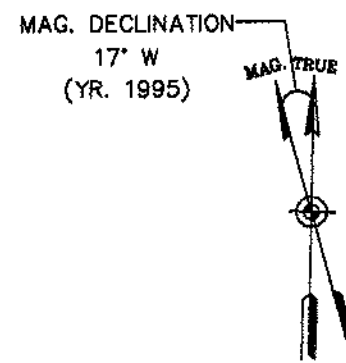
PLAN VIEW - (TERPS) R/W 33 APPROACH END  
SCALE: 1"=1,000'



PLAN VIEW - (TERPS) R/W 15 APPROACH END  
SCALE: 1"=1,000'

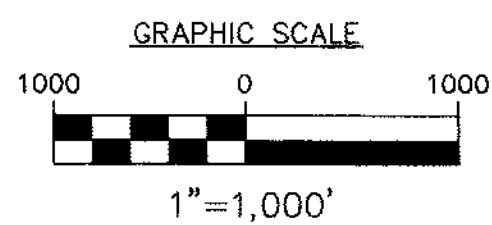
REVISIONS		BY		DESCRIPTION	
REV. NO.	DATE	REV. NO.	DATE	REV. NO.	DATE
1		1		1	
STATE PROJECT NO.		FEDERAL PROJECT NO.		AIP3-23-2300-02	
SAIP111029-02(12)					
PROJECT DESIGNER		DES. BY		CHKD. BY	
Hoyle, Tanner & Associates, Inc.		KRS		JRL	
Oxford County Regional Airport		DATE: DECEMBER, 2003		SCALE: AS SHOWN	
AIRPORT MASTER PLAN UPDATE					
FAR PART 77 AIRSPACE SURFACES AND (TERPS)					
HTA PROJ. No.: 302902.03		DRAWING NO.		7	
OxIP177.dwg		SHEET 7 OF 8			





**LEGEND**

- INDUSTRIAL
- COMMERCIAL
- RESIDENTIAL
- RESOURCE PROTECTION
- VILLAGE
- RURAL
- 2021 NOISE CONTOUR



Oxford County Regional Airport Airport Master Plan Update		PROJECT DESIGNER		HTA		STATE PROJECT NO.		REV. NO.		REVISIONS	
		Hoyle, Tanner & Associates, Inc.		Consulting Engineers		SAP11-1029-02(12)		DATE		BY	
LAND USE AND NOISE CONTOUR PLAN		150 DOW STREET - MANCHESTER, NH 03101 - 1227 Tel: (603) 669-5555 Fax: (603) 669-4188 WEB PAGE: www.hta-nh.com		FEDERAL PROJECT NO.		AP3-23-2300-02		DR. BY		CHKD. BY	
		SCALE: AS SHOWN DATE: DECEMBER, 2003		DES. BY		TDB		JRL			
HTA PROJ. No.: 302902.03 OxflUse.dwg		DRAWING NO.		8		SHEET 8 OF 8					