

Maine State Library

Digital Maine

Transportation Documents

Transportation

11-22-1928

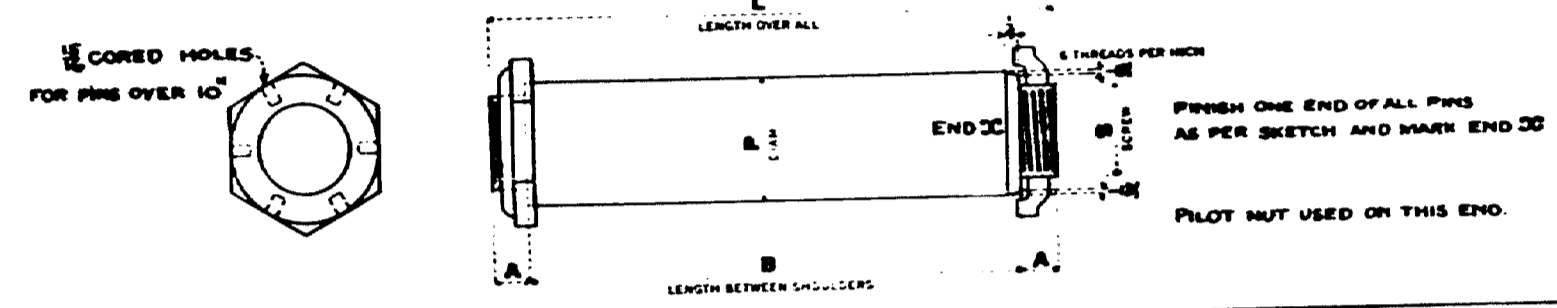
**Maine Highway Commission Bridge Division : Piscataquis River
Bridge in the Town of Howland, Penobscot Co., Order for Pins and
Nuts, November 22, 1928**

Maine Department of Transportation

Follow this and additional works at: https://digitalmaine.com/mdot_docs

Copyright, AMERICAN BRIDGE COMPANY, 1928

PINS AND NUTS



LINE NO.	MEMBER				PIN				NUTS				ORDERED				SHIPMENTS
	NO. PCB.	MARK	DIAM. P	LENGTH L	DIAM. S	DIAM. A	LENGTH B	NO. PCB.	PATTERN NO.	NO. PCB.	LENGTH	ITEM	NO. PCB.	LENGTH	ITEM		
1	12	L0	4 3/8	1	4 3/8	3 1/2	1 1/2	24	PN25	351	17.1	107					

PILOT NUTS						DRIVING NUTS						
LINE NO.	NO. PCB.	DIAM. OF PIN P	LENGTH L	SCREW S	PATTERN NO.	ITEM	NO. PCB.	DIAM. OF PIN P	LENGTH L	SCREW S	PATTERN NO.	ITEM
29	2	4 3/8	2 1/2	3 1/2	PS19	PS170	2	4 3/8	5 1/2	3 1/2	PDT	PS170

PIN AND NUTS
 MATERIAL: O.H. Steel, Corral 1855 SPEC. Maine State Hwy. Comm. 1928
 DRAWINGS: Elmira FABRICATION Elmira
 ORDER No. F3276s SHEET No. C3
 NAME OF STRUCTURE: Maine Highway Commission, Piscataquis River Bridge, Town of Howland, Penobscot Co.

SKETCH, SHOP AND SHIPPING BILL

COPYRIGHT AMERICAN BRIDGE COMPANY 1928

SKETCH	LINE NO.	NO. PCB.	MARK	MATERIAL		CALCULATED WEIGHT FOR ONE MEMBER	ORDERED		SHIPMENTS
				SHAPE	LENGTH		NO. PCB.	LENGTH	
	1								
	2								
	3								
	4	30 X 1	R. L. 2 1/2	3/8	1				

Paint one shop coat red lead and oil
 DATE: SWP 11 9 28 / Elmira FABRICATION Elmira
 DATE: SWP 11 21 28 / Elmira FABRICATION Elmira
 ORDER No. F3276r SHEET No. C2
 NAME OF STRUCTURE: MAINE HIGHWAY COMMISSION, PISCATAQUIS RIVER BRIDGE, TOWN OF HOWLAND PENOBSCOT CO. 9

SKETCH, SHOP AND SHIPPING BILL

Copyright, AMERICAN BRIDGE COMPANY, 1928

SKETCH	LINE NO.	NO. PCB.	MARK	MATERIAL		CALCULATED WEIGHT FOR ONE MEMBER	ORDERED		SHIPMENTS
				SHAPE	LENGTH		NO. PCB.	LENGTH	
	1								
	2								
	3	24	Sledge Anchors	1 1/2	1 5/8				

No Paint
 Specifications: Maine State Hwy. Comm. 1928
 DATE: SWP 10 10 28 / Elmira FABRICATION Elmira
 DATE: SWP 11 21 28 / Elmira FABRICATION Elmira
 ORDER No. F3276s SHEET No. C1
 NAME OF STRUCTURE: Maine Highway Commission, Piscataquis River Bridge, Town of Howland, Penobscot Co.

