

**Initial and Continued Claims by Program for Week Ending: 08/12/2017**

Program		Current Week Claims	Last Week			Last Year		
			Claims	Net Change	% Change	Claims	Net Change	% Change
Regular	Initial:	424	489	▼ -65	-13.3	540	▼ -116	-21.5
	Continued:	4,259	4,411	▼ -152	-3.4	4,845	▼ -586	-12.1
Workshare	Initial:	0	0	— 0	0.0	0	— 0	0.0
	Continued:	2	2	— 0	0.0	4	▼ -2	-50.0
Dislocated Worker Benefits	Initial:	16	4	▲ 12	300.0	5	▲ 11	220.0
	Continued:	67	58	▲ 9	15.5	61	▲ 6	9.8
Trade Readjustment Allowance	Initial:	5	5	— 0	0.0	0	▲ 5	0.0
	Continued:	113	128	▼ -15	-11.7	182	▼ -69	-37.9
Unemployment Compensation for Federal Employees & Military	Initial:	0	1	▼ -1	-100.0	6	▼ -6	-100.0
	Continued:	35	37	▼ -2	-5.4	44	▼ -9	-20.5
<b>TOTAL ALL PROGRAMS</b>	Initial:	<b>445</b>	<b>499</b>	▼ -54	-10.8	<b>551</b>	▼ -106	-19.2
	Continued:	<b>4,476</b>	<b>4,636</b>	▼ -160	-3.5	<b>5,136</b>	▼ -660	-12.9

**Note:** Initial claims decreased due to fewer layoffs in Manufacturing and Health Care & Social Assistance industries. For DWB and TRA programs, initial and continued claims are due to claimants in approved training exhausting Regular Benefits.

**UNEMPLOYMENT INSURANCE FINANCIAL DATA FOR WEEK ENDING**

**07/22/2017**

Regular Unemployment Insurance Benefits for Week	\$	1,288,416.56
Dislocated Workers Benefits Amount Paid for Week	\$	26,402.00
Trade Readjustment Allowance Benefits Amount Paid for Week	\$	66,282.63
Federal Programs Benefits Amount Paid for Week	\$	16,908.44
Net Amount of UI Contributions for Week	\$	1,321,904.89
Balance Available for UI Benefits as of Week Ending	\$	404,810,871.90
Net Benefits Paid Chargeable to Unemployment Compensation Fund for June 2017	\$	5,183,052.38
Reed Act Disbursements October 2016 - June 2017	\$	80,659.70

**Note:** Regular Benefits paid include reimbursable payments and other disbursements which are reported under the UI Program. Amount Paid may represent Continued Claims tallied in a prior week.

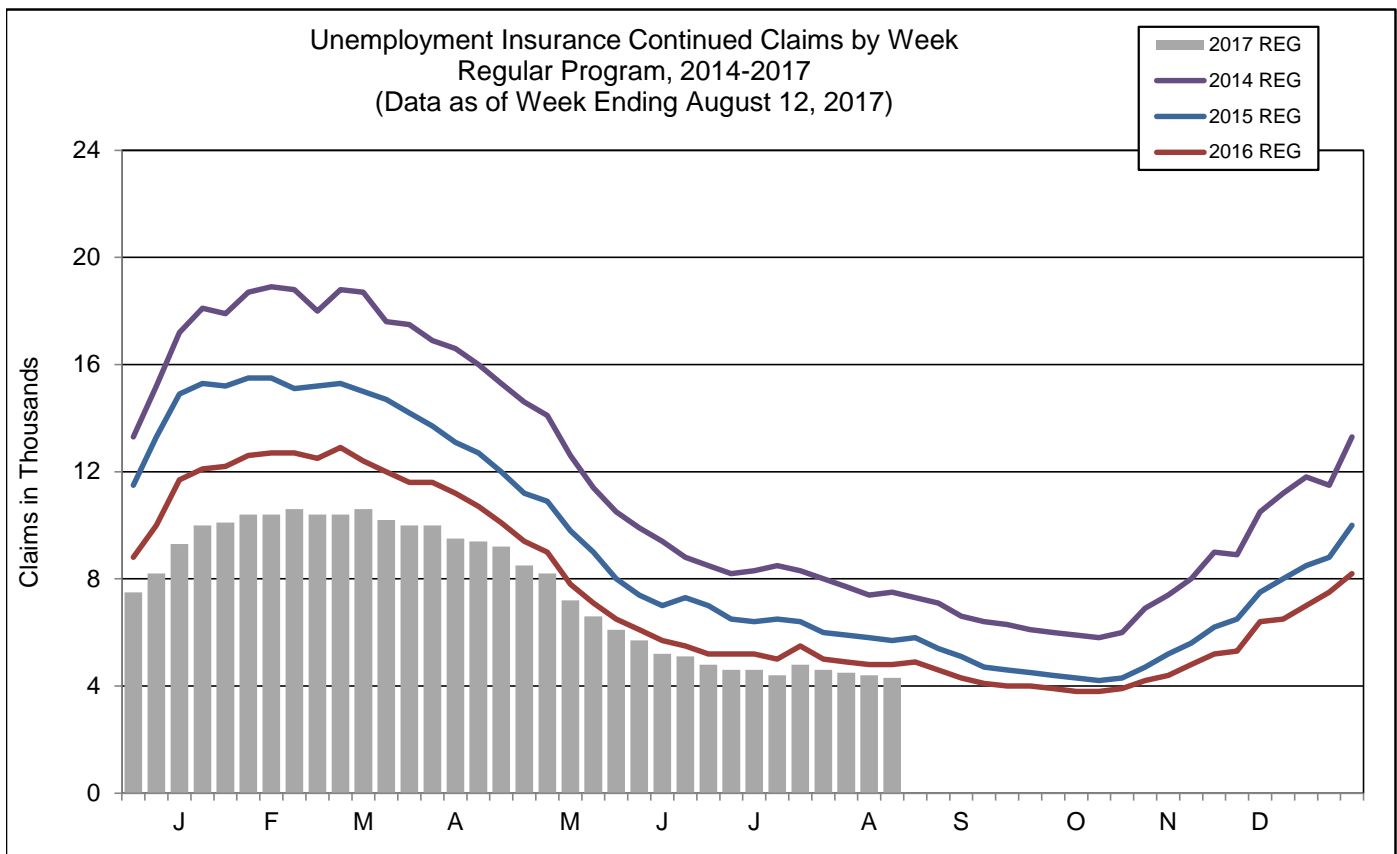
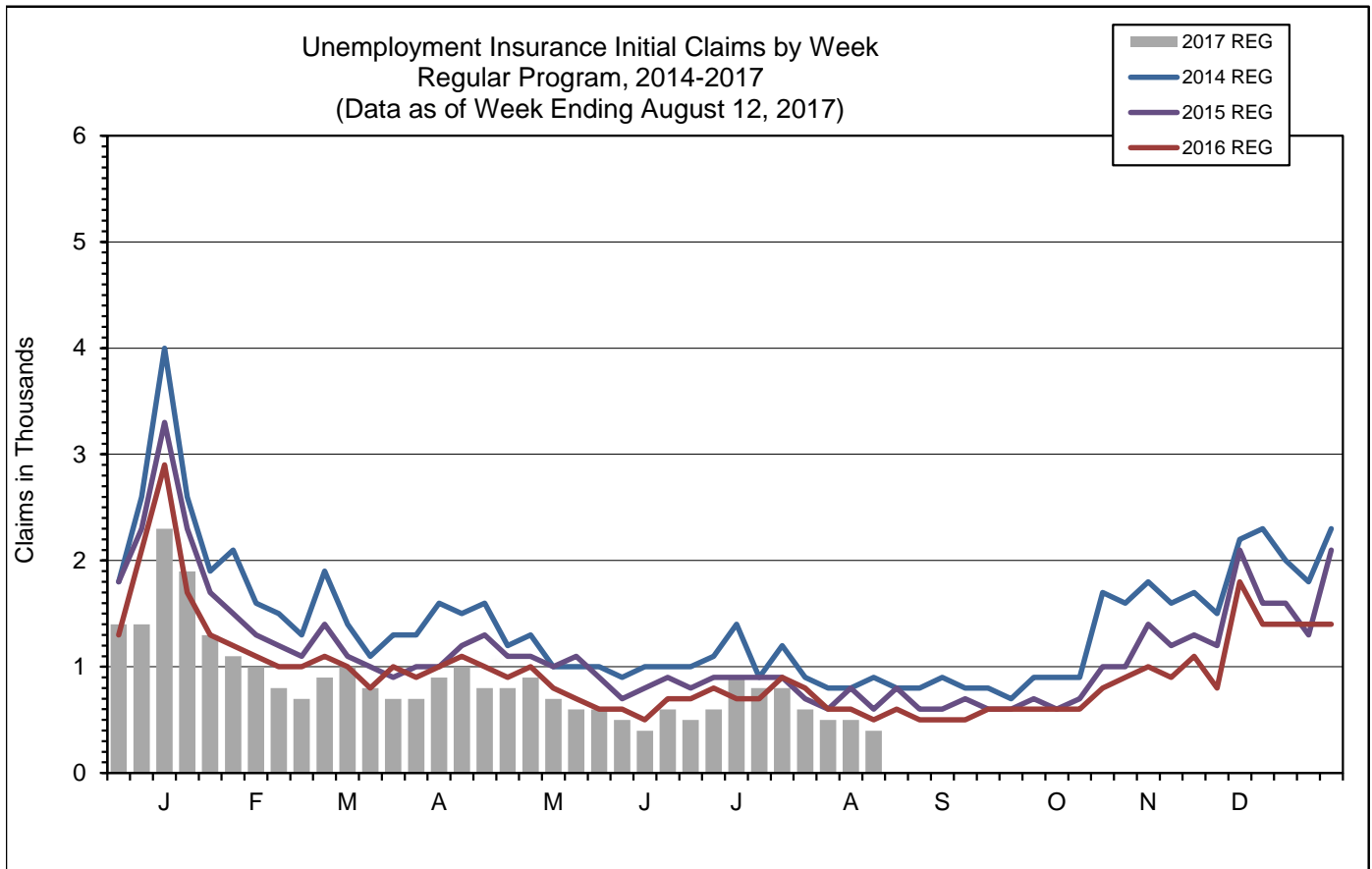
**Extended Benefits Triggers On when the 13-Week Average Insured Unemployment Rate (IUR) reaches 5% and the IUR is 120% or higher than the last 2 years.**

13-Week Average Insured Unemployment Week Ending 08/05/2017 0.84%  
120% Threshold - Current IUR as a percent of the average IUR rate in the prior 2 years. 79.24%

IUR is calculated by taking the average of the Continued Claims claims over a rolling 13 week period divided by Covered Employment. Covered Employment is employment that falls under the Unemployment Insurance Program.

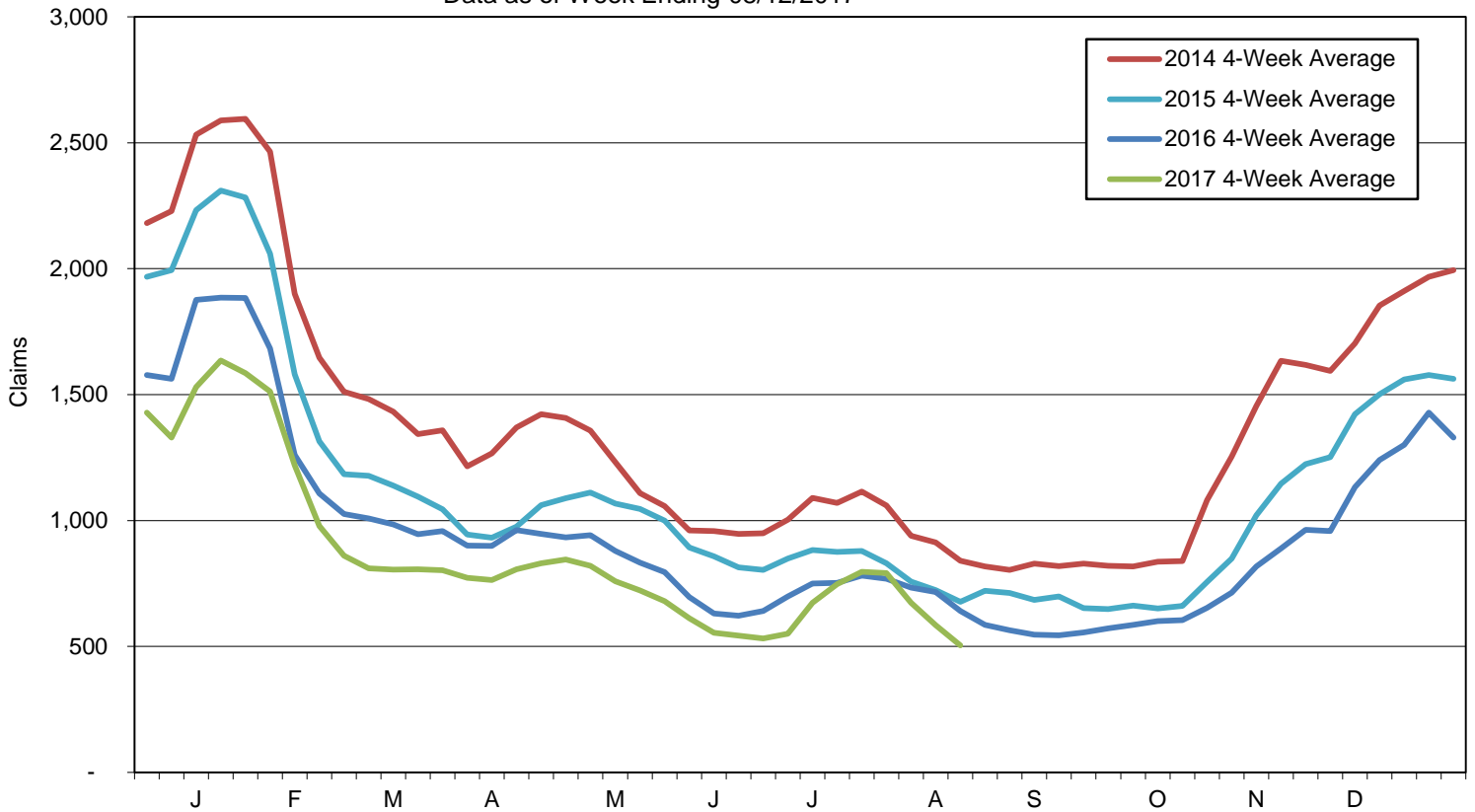
**Mass Layoff Statistics**  
**August 12, 2017**

Year to Date	Number of Unique Employers	Number of Times Employers had 5 or more Initial Claims	Number of Initial Claims
2017	197	555	6,324
2016	232	673	7,578
Percent Change	▼ -15.1%	▼ -17.5%	▼ -16.5%

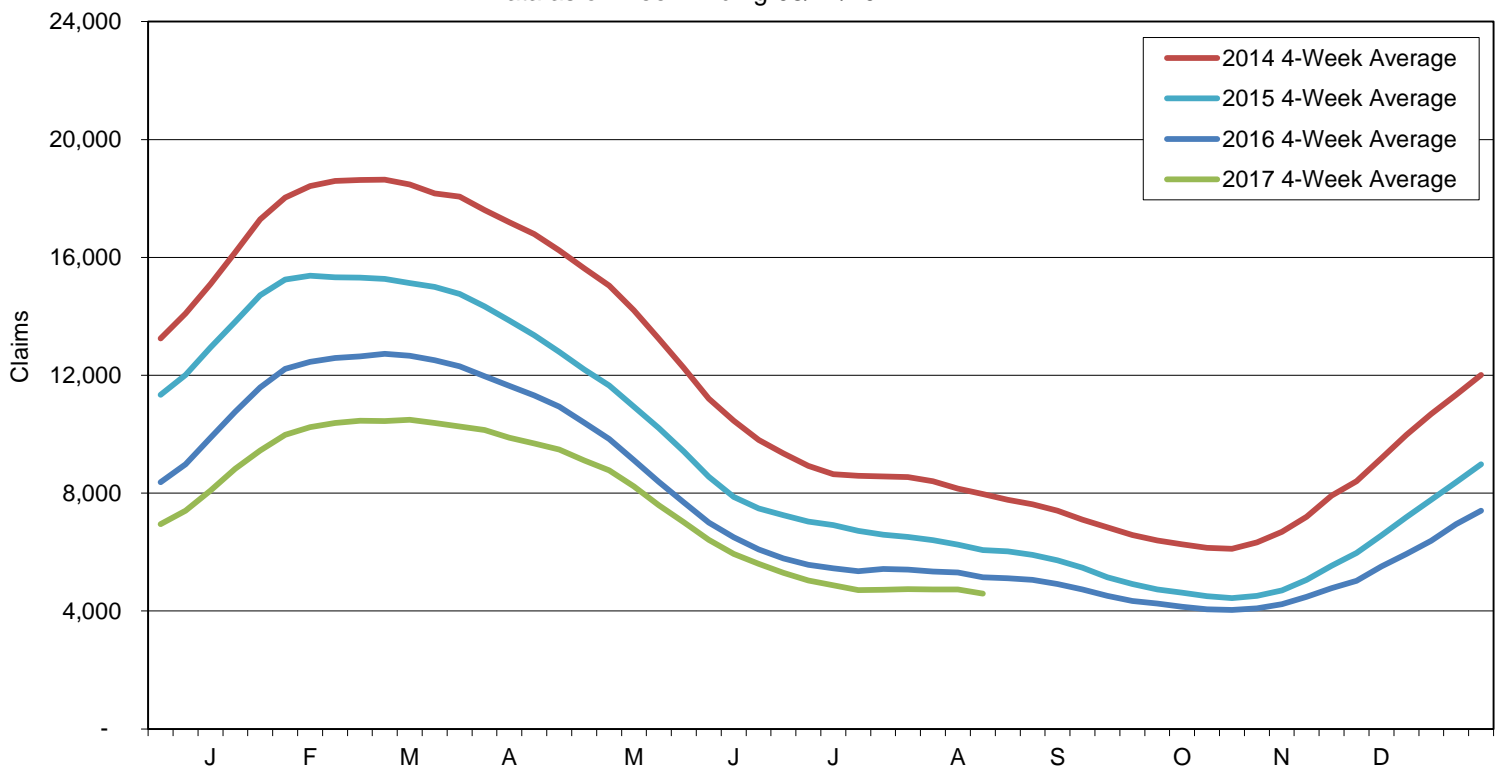


Note: Charts do not include data from Dislocated Worker Benefits, Trade Readjustment Allowance, and Unemployment Compensation for Federal Employees & Military programs due to their small numbers.

Initial Claims for Unemployment Compensation in Maine  
4-Week Moving Averages for Regular Program  
Data as of Week Ending 08/12/2017



Continued Claims for Unemployment Compensation in Maine  
4-Week Moving Averages for Regular Program  
Data as of Week Ending 08/12/2017



Note: Charts do not include data from Dislocated Worker Benefits, Trade Readjustment Allowance, and Unemployment Compensation for Federal Employees & Military programs due to their small numbers.