

**Initial and Continued Claims by Program for Week Ending: 04/01/2017**

Program		Current Week Claims	Last Week			Last Year		
			Claims	Net Change	% Change	Claims	Net Change	% Change
Regular	Initial:	935	711	▲ 224	31.5	1,003	▼ -68	-6.8
	Continued:	9,545	9,988	▼ -443	-4.4	11,167	▼ -1,622	-14.5
Workshare	Initial:	0	0	— 0	0.0	0	— 0	0.0
	Continued:	4	6	▼ -2	-33.3	0	▲ 4	0.0
Dislocated Worker Benefits	Initial:	17	15	▲ 2	13.3	9	▲ 8	88.9
	Continued:	132	131	▲ 1	0.8	165	▼ -33	-20.0
Trade Readjustment Allowance	Initial:	1	1	— 0	0.0	0	▲ 1	0.0
	Continued:	234	216	▲ 18	8.3	162	▲ 72	44.4
Unemployment Compensation for Federal Employees & Military	Initial:	4	2	▲ 2	100.0	3	▲ 1	33.3
	Continued:	65	66	▼ -1	-1.5	89	▼ -24	-27.0
<b>TOTAL ALL PROGRAMS</b>	Initial:	<b>957</b>	<b>729</b>	▲ <b>228</b>	31.3	<b>1,015</b>	▼ <b>-58</b>	-5.7
	Continued:	<b>9,980</b>	<b>10,407</b>	▼ <b>-427</b>	-4.1	<b>11,583</b>	▼ <b>-1,603</b>	-13.8

**Note:** Initial claims increased due to more layoffs in Retail Trade and Agriculture, Forestry, Fishing & Hunting industries. For DWB and TRA programs, initial and continued claims are due to claimants in approved training exhausting Regular Benefits.

**UNEMPLOYMENT INSURANCE FINANCIAL DATA FOR WEEK ENDING**

**03/11/2017**

Regular Unemployment Insurance Benefits for Week	\$	3,005,583.67
Dislocated Workers Benefits Amount Paid for Week	\$	44,228.00
Trade Readjustment Allowance Benefits Amount Paid for Week	\$	112,292.05
Federal Programs Benefits Amount Paid for Week	\$	27,582.30
Net Amount of UI Contributions for Week	\$	93,976.45
Balance Available for UI Benefits as of Week Ending	\$	379,521,752.95
Net Benefits Paid Chargeable to Unemployment Compensation Fund for February 2017	\$	10,750,756.50
Reed Act Disbursements October 2016 - February 2017	\$	43,248.61

**Note:** Regular Benefits paid include reimbursable payments and other disbursements which are reported under the UI Program. Amount Paid may represent Continued Claims tallied in a prior week. Reed Act Disbursements posted accounting adjustments in August that occurred in May and June which caused the decrease in the disbursements for the period listed.

**Extended Benefits Triggers On when the 13-Week Average Insured Unemployment Rate (IUR) reaches 5% and the IUR is 120% or higher than the last 2 years.**

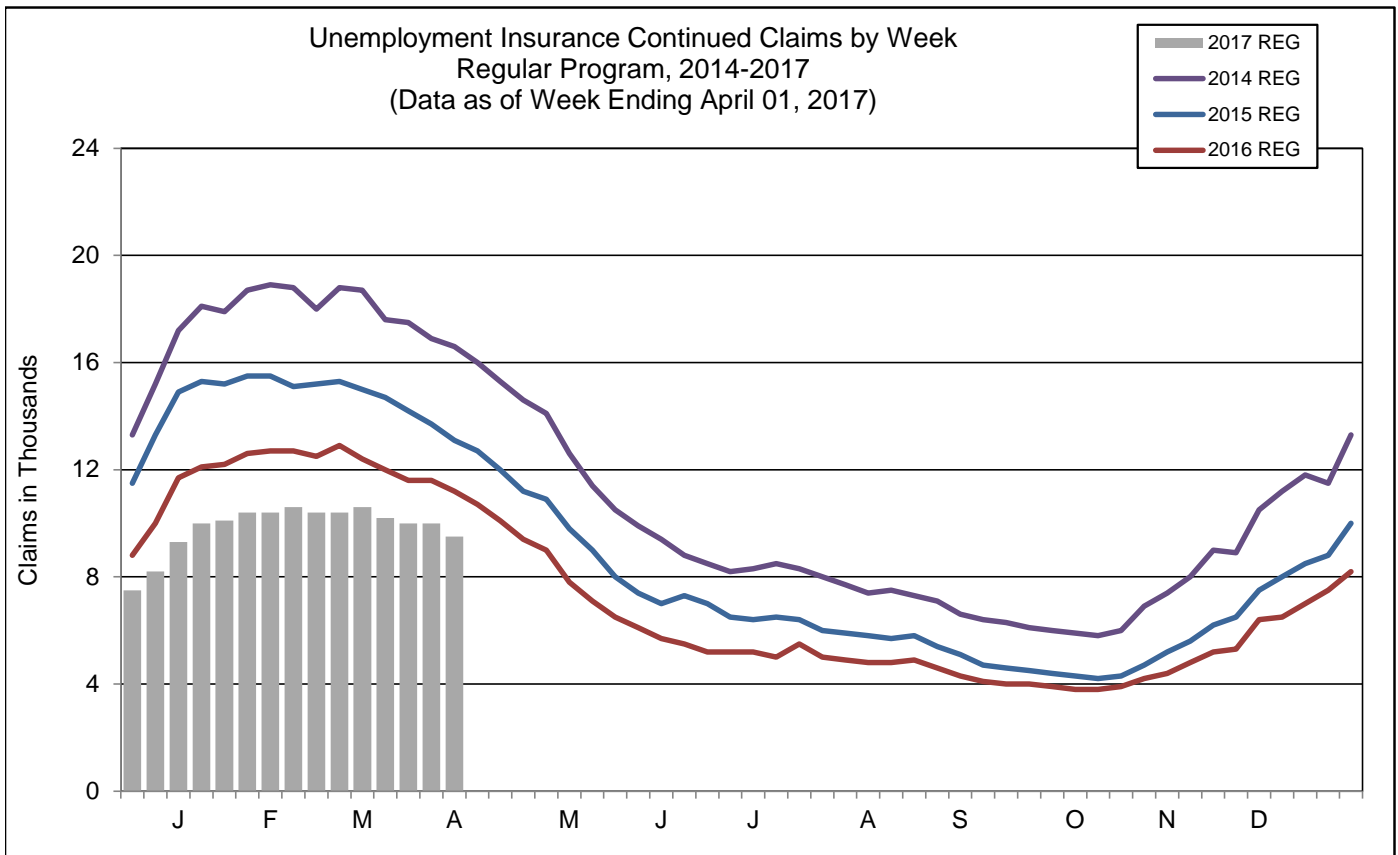
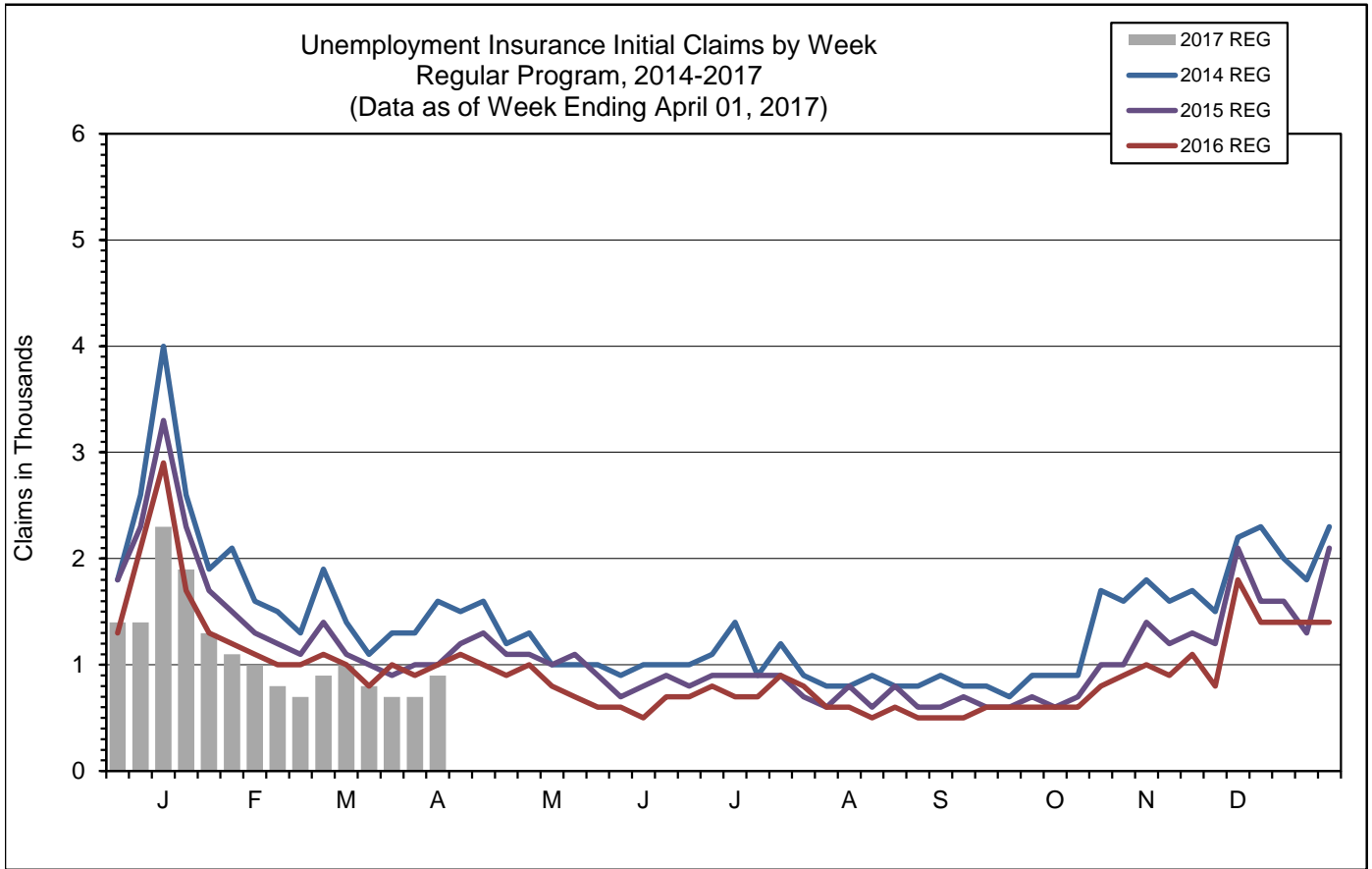
13-Week Average Insured Unemployment Week Ending 03/25/2017	1.73%
120% Threshold - Current IUR as a percent of the average IUR rate in the prior 2 years.	73.93%

IUR is calculated by taking the average of the Continued Claims claims over a rolling 13 week period divided by Covered Employment. Covered Employment is employment that falls under the Unemployment Insurance Program.

**Mass Layoff Statistics**

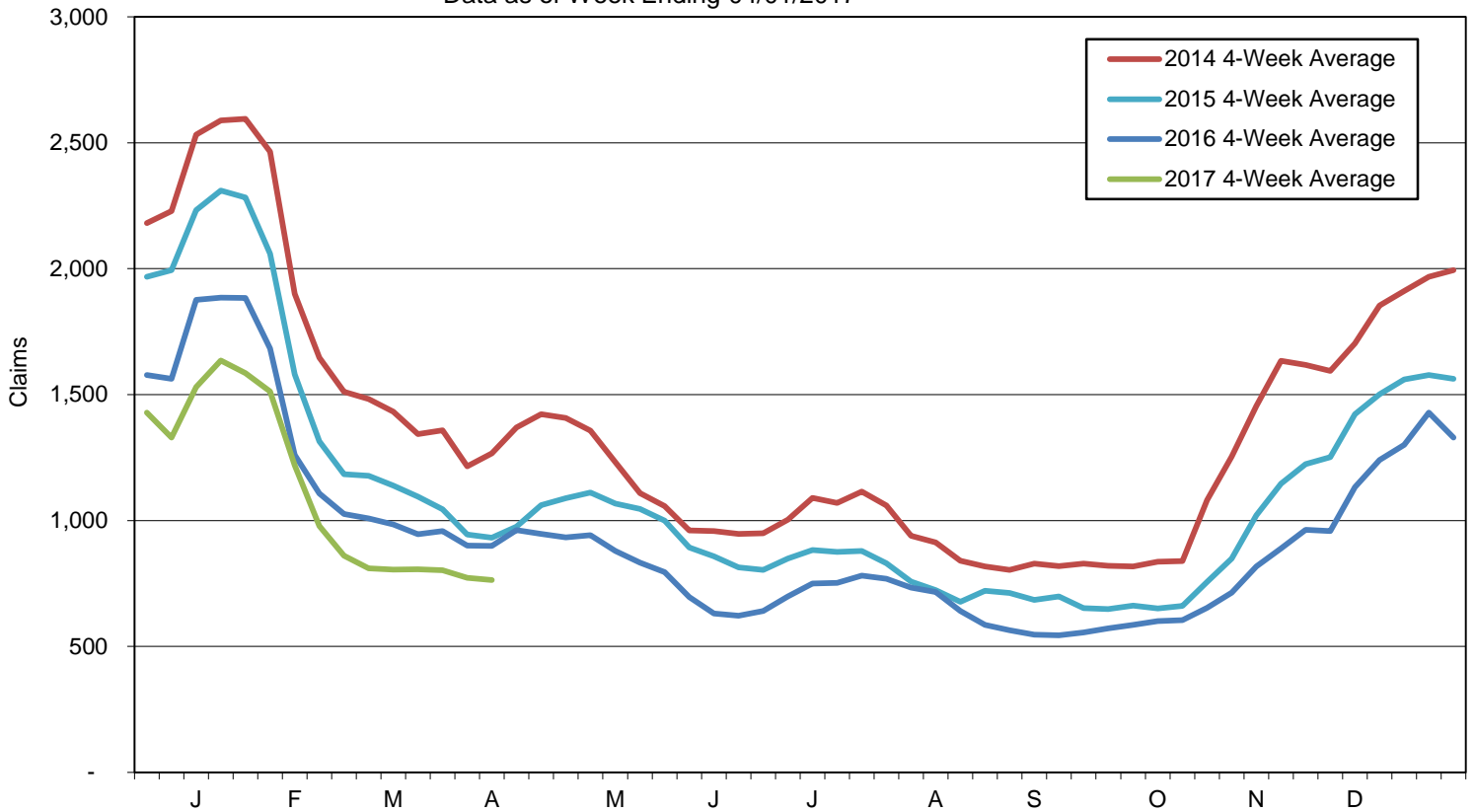
**April 1, 2017**

Year to Date	Number of Unique Employers	Number of Times Employers had 5 or more Initial Claims	Number of Initial Claims
2017	123	283	3,152
2016	167	337	3,644
Percent Change	▼ -26.3%	▼ -16.0%	▼ -13.5%

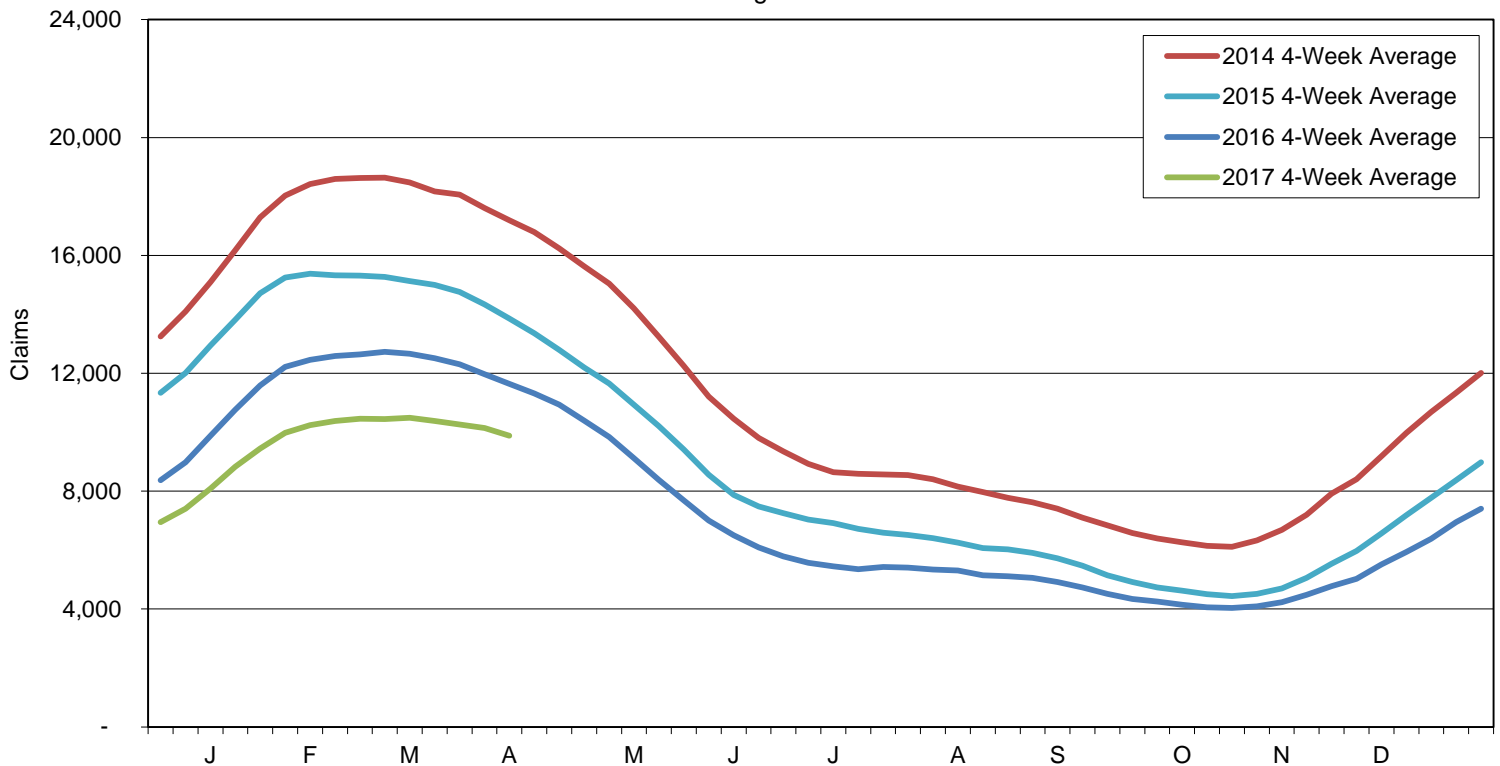


Note: Charts do not include data from Dislocated Worker Benefits, Trade Readjustment Allowance, and Unemployment Compensation for Federal Employees & Military programs due to their small numbers.

Initial Claims for Unemployment Compensation in Maine  
 4-Week Moving Averages for Regular Program  
 Data as of Week Ending 04/01/2017



Continued Claims for Unemployment Compensation in Maine  
 4-Week Moving Averages for Regular Program  
 Data as of Week Ending 04/01/2017



Note: Charts do not include data from Dislocated Worker Benefits, Trade Readjustment Allowance, and Unemployment Compensation for Federal Employees & Military programs due to their small numbers.