

**Initial and Continued Claims by Program for Week Ending: 02/25/2017**

Program		Current Week Claims	Last Week			Last Year		
			Claims	Net Change	% Change	Claims	Net Change	% Change
Regular	Initial:	857	713	▲ 144	20.2	1,117	▼ -260	-23.3
	Continued:	10,439	10,426	▲ 13	0.1	12,897	▼ -2,458	-19.1
Workshare	Initial:	0	4	▼ -4	-100.0	0	— 0	0.0
	Continued:	6	6	— 0	0.0	2	▲ 4	200.0
Dislocated Worker Benefits	Initial:	14	12	▲ 2	16.7	16	▼ -2	-12.5
	Continued:	145	67	▲ 78	116.4	157	▼ -12	-7.6
Trade Readjustment Allowance	Initial:	5	0	▲ 5	0.0	3	▲ 2	66.7
	Continued:	223	218	▲ 5	2.3	171	▲ 52	30.4
Unemployment Compensation for Federal Employees & Military	Initial:	2	2	— 0	0.0	2	— 0	0.0
	Continued:	74	68	▲ 6	8.8	99	▼ -25	-25.3
<b>TOTAL ALL PROGRAMS</b>	Initial:	<b>878</b>	<b>731</b>	▲ 147	20.1	<b>1,138</b>	▼ -260	-22.8
	Continued:	<b>10,887</b>	<b>10,785</b>	▲ 102	0.9	<b>13,326</b>	▼ -2,439	-18.3

**Note:** Initial claims increased due to layoffs in Transportation & Warehousing, Retail Trade, Health Care & Social Assistance, and Administrative & Support & Waste Management & Remediation Services industries. For DWB and TRA programs, initial and continued claims are due to claimants in approved training exhausting Regular Benefits.

**UNEMPLOYMENT INSURANCE FINANCIAL DATA FOR WEEK ENDING**

**02/04/2017**

Regular Unemployment Insurance Benefits for Week	\$	2,226,361.19
Dislocated Workers Benefits Amount Paid for Week	\$	33,886.00
Trade Readjustment Allowance Benefits Amount Paid for Week	\$	111,309.69
Federal Programs Benefits Amount Paid for Week	\$	39,856.27
Net Amount of UI Contributions for Week	\$	9,257,885.96
Balance Available for UI Benefits as of Week Ending	\$	392,640,994.99
Net Benefits Paid Chargeable to Unemployment Compensation Fund for January 2017	\$	12,725,958.83
Reed Act Disbursements October 2016 - January 2017	\$	43,247.19

**Note:** Regular Benefits paid include reimbursable payments and other disbursements which are reported under the UI Program. Amount Paid may represent Continued Claims tallied in a prior week. Reed Act Disbursements posted accounting adjustments in August that occurred in May and June which caused the decrease in the disbursements for the period listed.

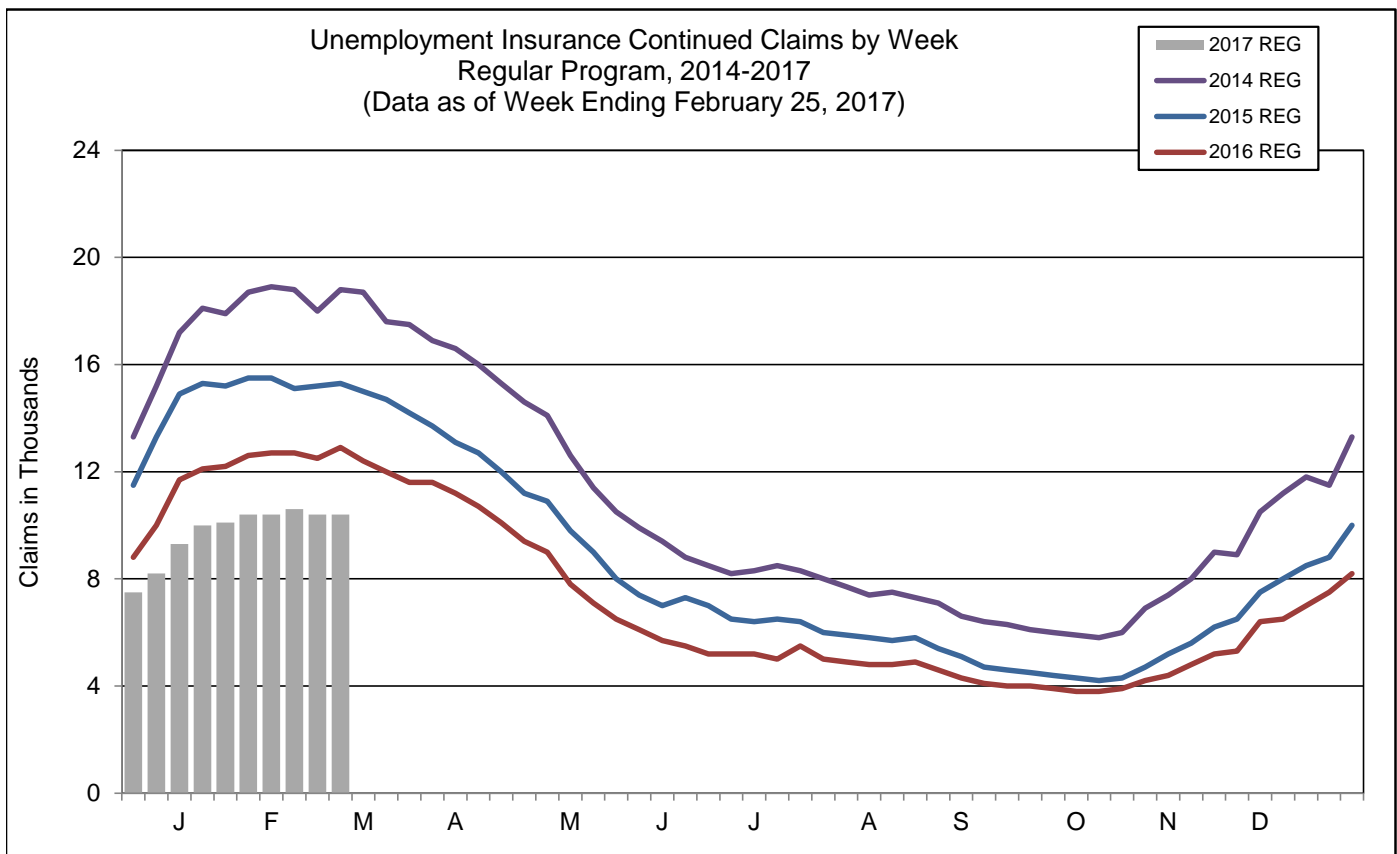
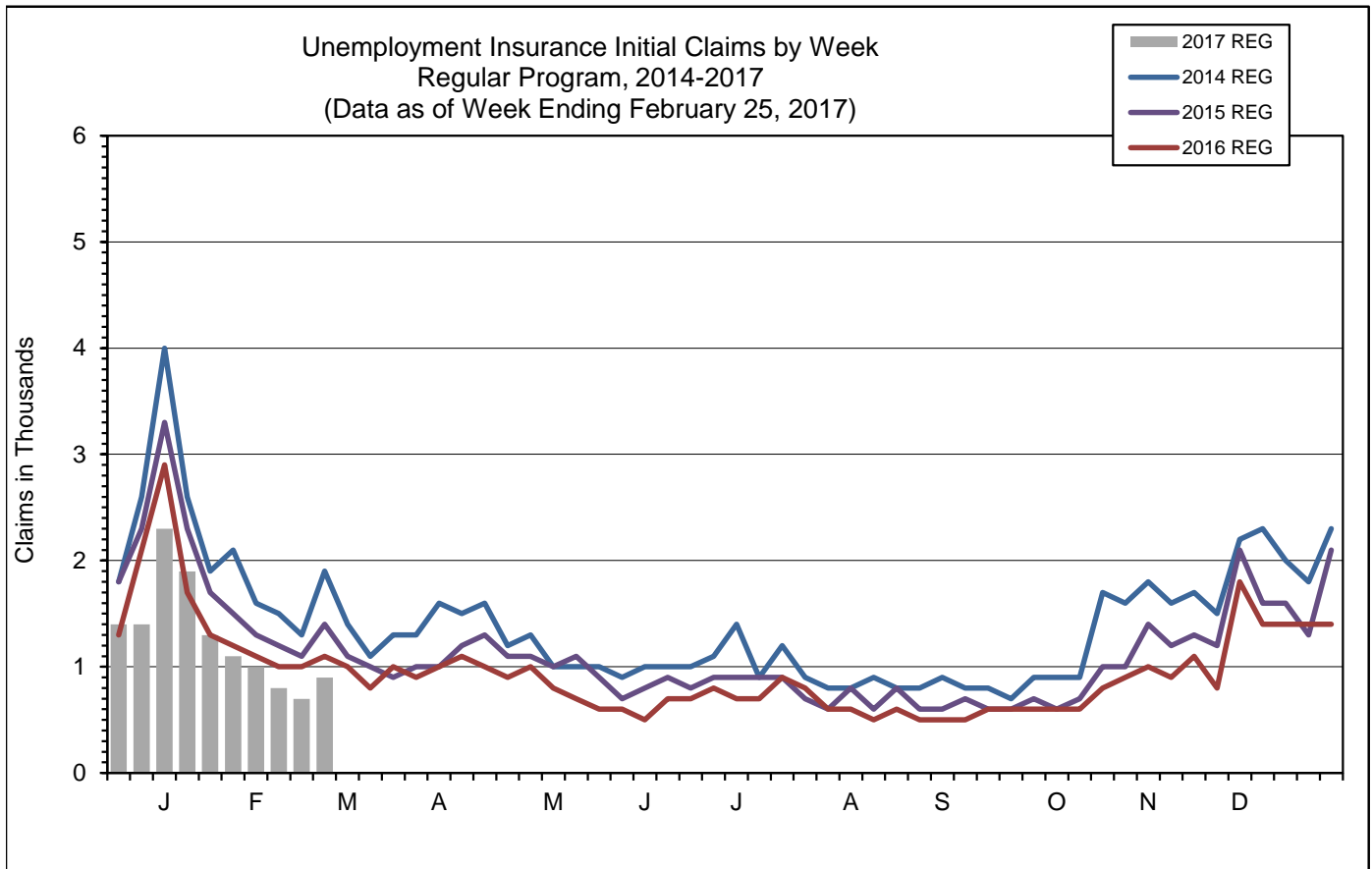
**Extended Benefits Triggers On when the 13-Week Average Insured Unemployment Rate (IUR) reaches 5% and the IUR is 120% or higher than the last 2 years.**

13-Week Average Insured Unemployment Week Ending 02/18/2017	1.54%
120% Threshold - Current IUR as a percent of the average IUR rate in the prior 2 years.	71.29%

IUR is calculated by taking the average of the Continued Claims claims over a rolling 13 week period divided by Covered Employment. Covered Employment is employment that falls under the Unemployment Insurance Program.

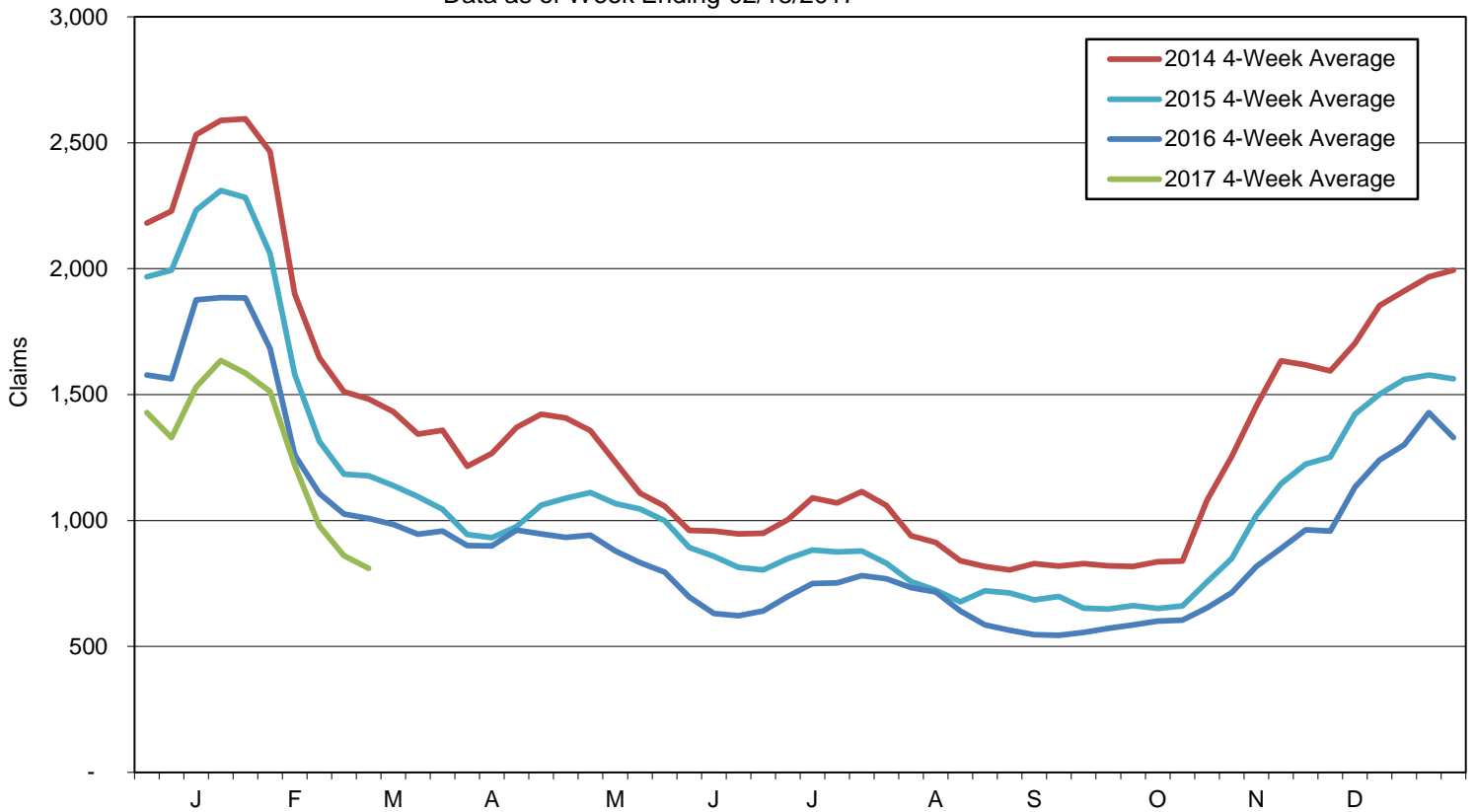
**Mass Layoff Statistics**  
**February 25, 2017**

Year to Date	Number of Unique Employers	Number of Times Employers had 5 or more Initial Claims	Number of Initial Claims
2017	104	212	2,326
2016	123	240	2,749
Percent Change	▼ -15.4%	▼ -11.7%	▼ -15.4%

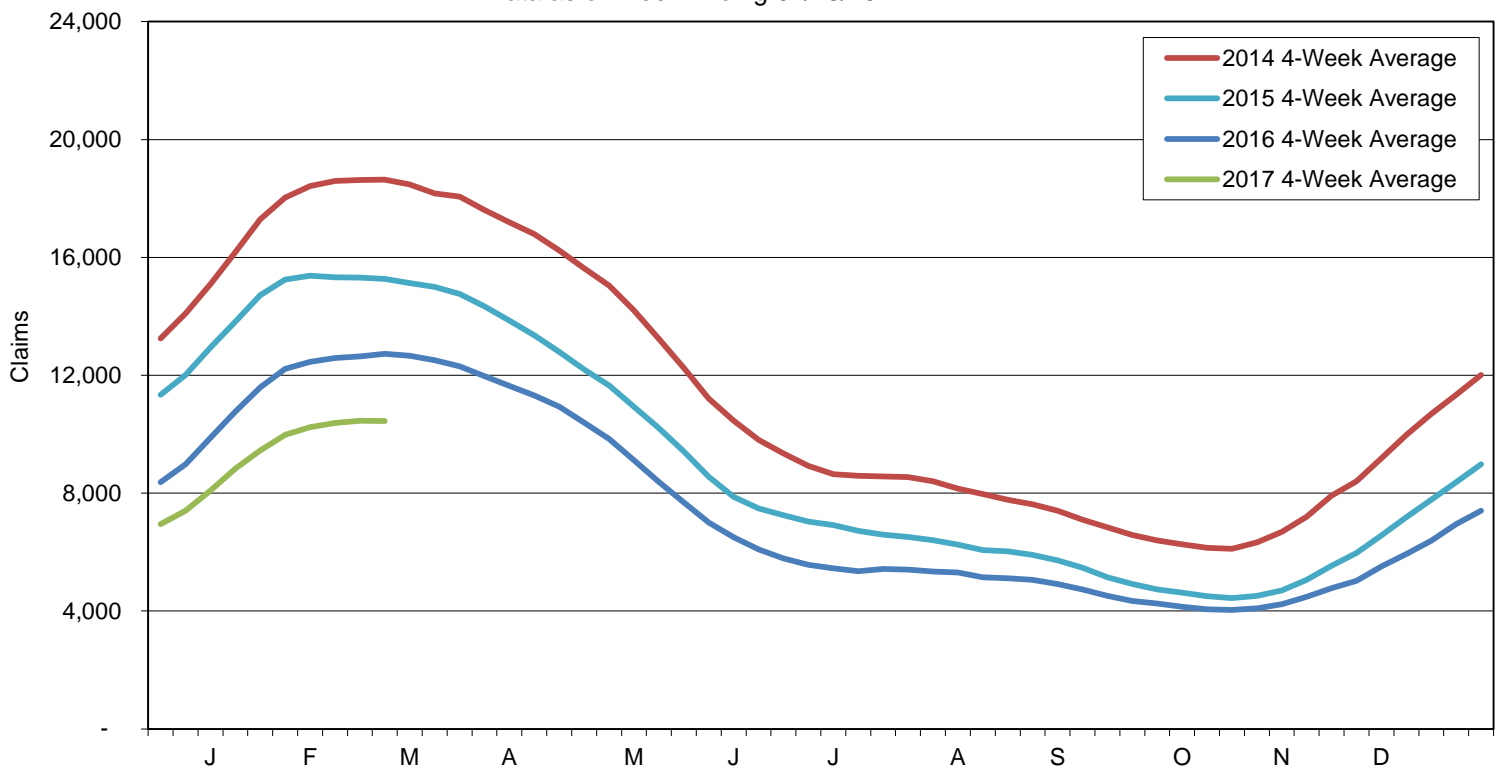


Note: Charts do not include data from Dislocated Worker Benefits, Trade Readjustment Allowance, and Unemployment Compensation for Federal Employees & Military programs due to their small numbers.

Initial Claims for Unemployment Compensation in Maine  
4-Week Moving Averages for Regular Program  
Data as of Week Ending 02/18/2017



Continued Claims for Unemployment Compensation in Maine  
4-Week Moving Averages for Regular Program  
Data as of Week Ending 02/18/2017



Note: Charts do not include data from Dislocated Worker Benefits, Trade Readjustment Allowance, and Unemployment Compensation for Federal Employees & Military programs due to their small numbers.