

12-3-2016

# Weekly Gram Unemployment Compensation Data 12-3-2016

Maine Center for Workforce Research and Information

Maine Department of Labor

Follow this and additional works at: [http://digitalmaine.com/cwri\\_docs](http://digitalmaine.com/cwri_docs)

---

## Recommended Citation

Maine Center for Workforce Research and Information and Maine Department of Labor, "Weekly Gram Unemployment Compensation Data 12-3-2016" (2016). *Center for Workforce Research and Information Documents*. 976.  
[http://digitalmaine.com/cwri\\_docs/976](http://digitalmaine.com/cwri_docs/976)

This Text is brought to you for free and open access by the Labor at Maine State Documents. It has been accepted for inclusion in Center for Workforce Research and Information Documents by an authorized administrator of Maine State Documents. For more information, please contact [statedocs@maine.gov](mailto:statedocs@maine.gov).

**Initial and Continued Claims by Program for Week Ending: 12/03/2016**

Program		Current Week Claims	Last Week			Last Year		
			Claims	Net Change	% Change	Claims	Net Change	% Change
Regular	Initial:	1,797	849	▲ 948	111.7	2,079	▼ -282	-13.6
	Continued:	6,358	5,267	▲ 1,091	20.7	7,510	▼ -1,152	-15.3
Workshare	Initial:	0	0	— 0	0.0	0	— 0	0.0
	Continued:	7	5	▲ 2	40.0	5	▲ 2	40.0
Dislocated Worker Benefits	Initial:	5	5	— 0	0.0	6	▼ -1	-16.7
	Continued:	117	81	▲ 36	44.4	157	▼ -40	-25.5
Trade Readjustment Allowance	Initial:	2	1	▲ 1	100.0	3	▼ -1	-33.3
	Continued:	212	181	▲ 31	17.1	239	▼ -27	-11.3
Unemployment Compensation for Federal Employees & Military	Initial:	7	1	▲ 6	600.0	4	▲ 3	75.0
	Continued:	42	45	▼ -3	-6.7	79	▼ -37	-46.8
<b>TOTAL ALL PROGRAMS</b>	Initial:	<b>1,811</b>	<b>856</b>	<b>▲ 955</b>	<b>111.6</b>	<b>2,092</b>	<b>▼ -281</b>	<b>-13.4</b>
	Continued:	<b>6,736</b>	<b>5,579</b>	<b>▲ 1,157</b>	<b>20.7</b>	<b>7,990</b>	<b>▼ -1,254</b>	<b>-15.7</b>

**Note:** Initial claims increased due to more layoffs in Construction, Manufacturing, Administrative & Support & Waste Management & Remediation Services, Transportation & Warehousing, & Retail Trade industries. Continued claims increased due to layoffs in Manufacturing, Construction, Accommodation & Food Services, Transportation & Warehousing, and Administrative & Support & Waste Management & Remediation Services industries. For DWB and TRA programs, initial and continued claims are due to claimants in approved training exhausting Regular Benefits.

**UNEMPLOYMENT INSURANCE FINANCIAL DATA FOR WEEK ENDING**

**11/12/2016**

Regular Unemployment Insurance Benefits for Week	\$	1,207,002.96
Dislocated Workers Benefits Amount Paid for Week	\$	33,613.00
Trade Readjustment Allowance Benefits Amount Paid for Week	\$	96,913.50
Federal Programs Benefits Amount Paid for Week	\$	16,088.41
Net Amount of UI Contributions for Week	\$	302,561.09
Balance Available for UI Benefits as of Week Ending	\$	402,482,166.54
Net Benefits Paid Chargeable to Unemployment Compensation Fund for October 2016	\$	4,769,014.81
Reed Act Disbursements October 2016	\$	-

**Note:** Regular Benefits paid include reimbursable payments and other disbursements which are reported under the UI Program. Amount Paid may represent Continued Claims tallied in a prior week. Reed Act Disbursements posted accounting adjustments in August that occurred in May and June which caused the decrease in the disbursements for the period listed.

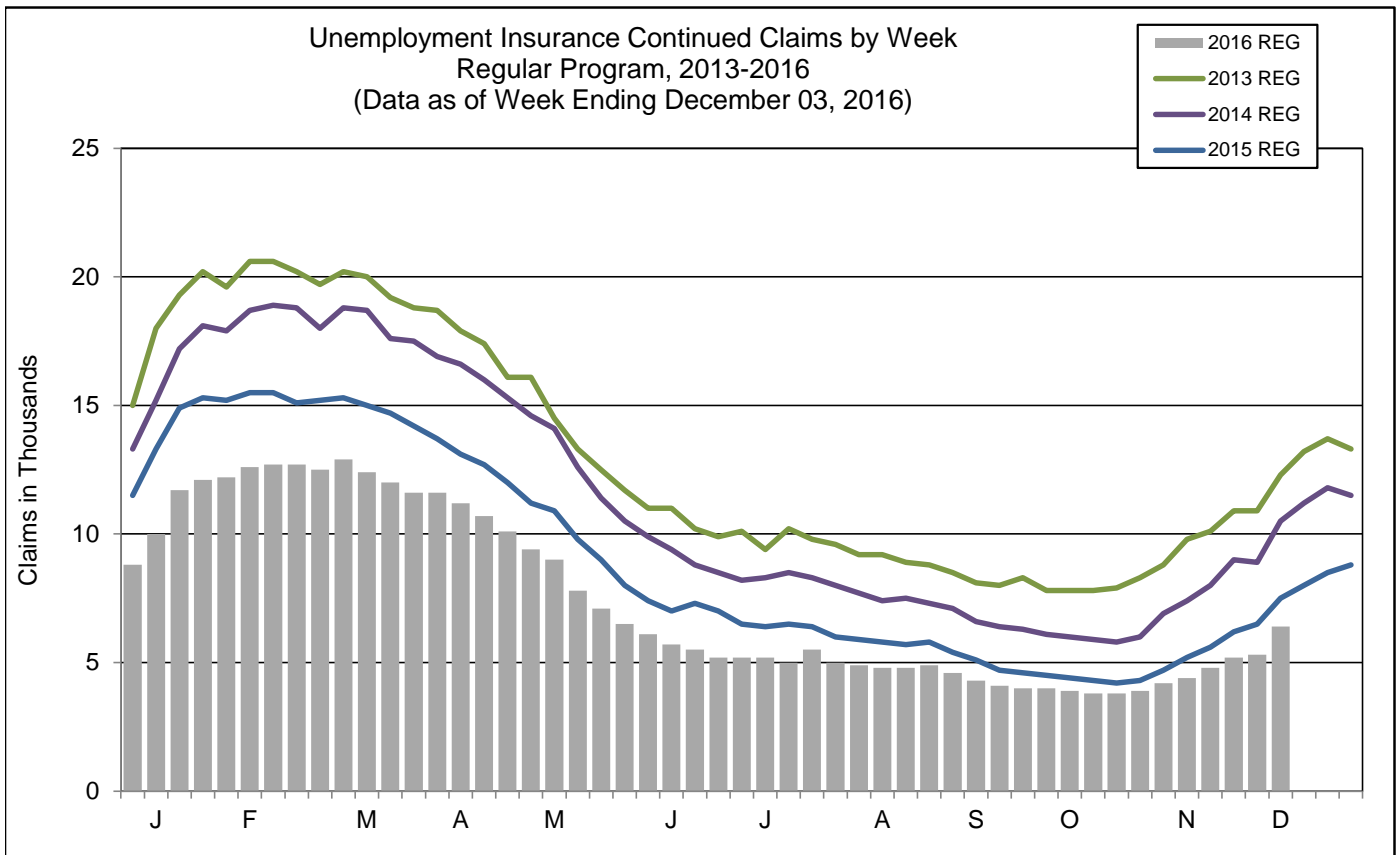
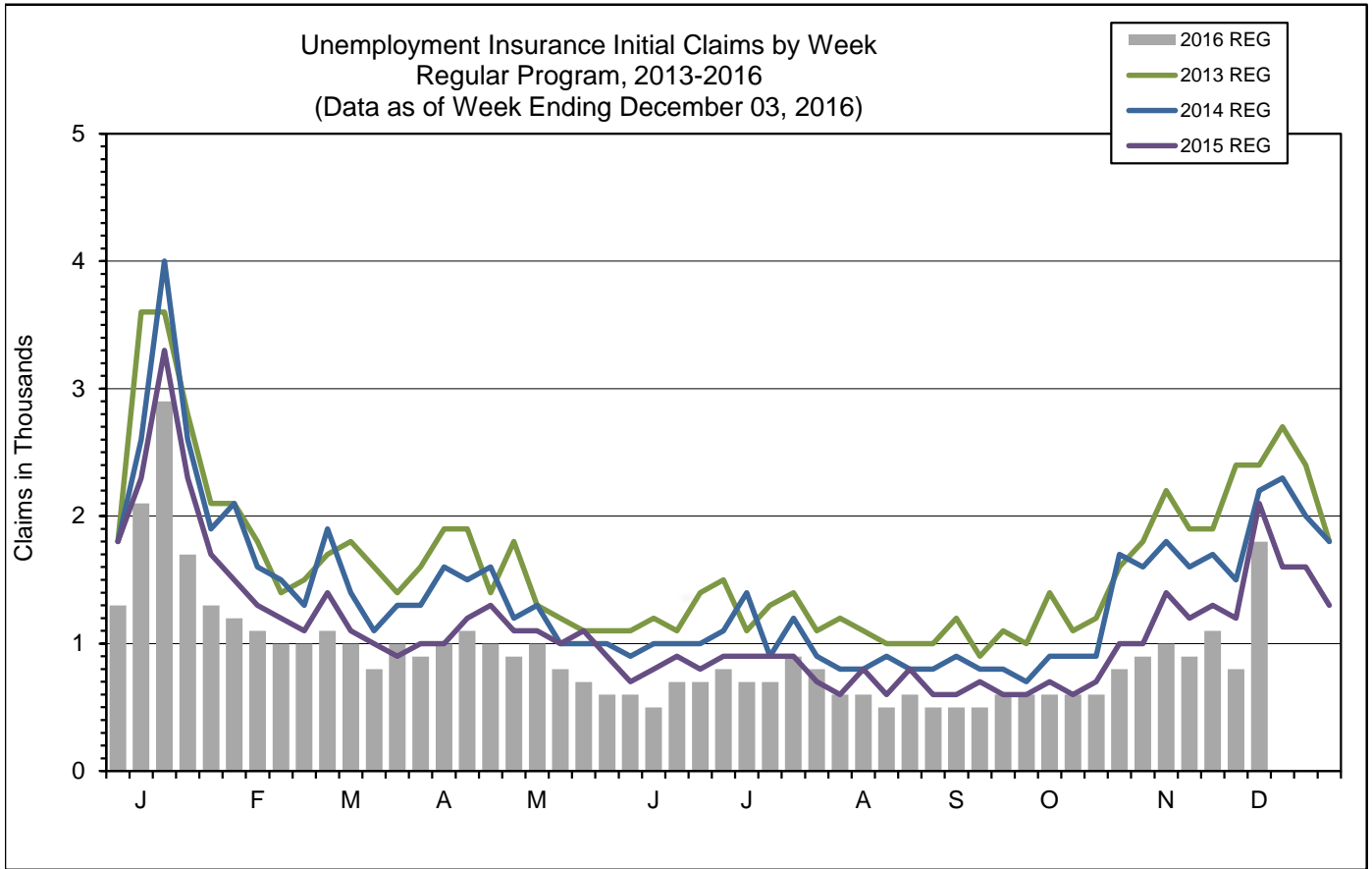
**Extended Benefits Triggers On when the 13-Week Average Insured Unemployment Rate (IUR) reaches 5% and the IUR is 120% or higher than the last 2 years.**

13-Week Average Insured Unemployment Week Ending 11/26/2016	0.79%
120% Threshold - Current IUR as a percent of the average IUR rate in the prior 2 years.	72.47%

IUR is calculated by taking the average of the Continued Claims claims over a rolling 13 week period divided by Covered Employment. Covered Employment is employment that falls under the Unemployment Insurance Program.

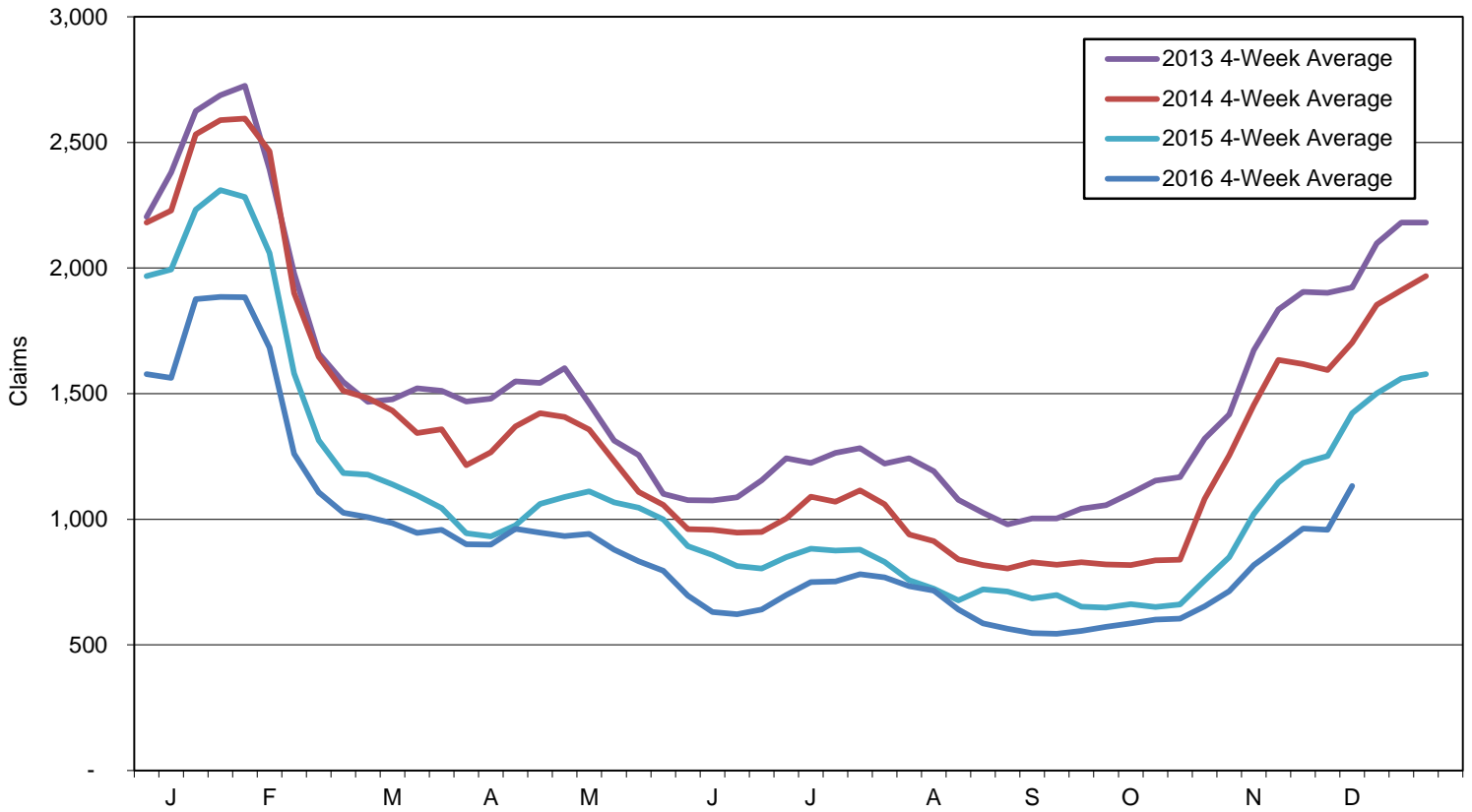
**Mass Layoff Statistics**  
**December 3, 2016**

Year to Date	Number of Unique Employers	Number of Times Employers had 5 or more Initial Claims	Number of Initial Claims
2016	303	937	10,447
2015	312	987	10,539
Percent Change	▼ -2.9%	▼ -5.1%	▼ -0.9%

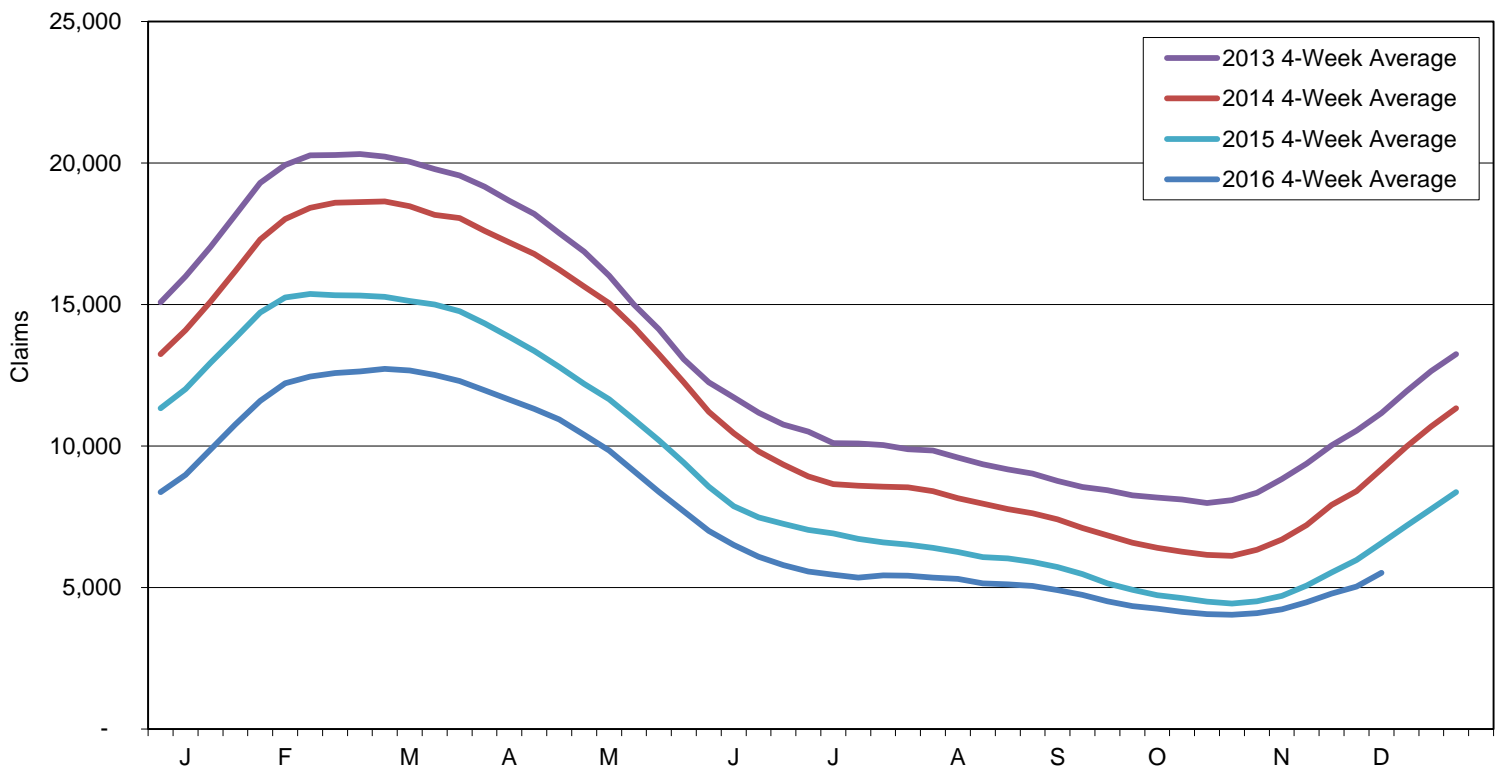


Note: Charts do not include data from Dislocated Worker Benefits, Trade Readjustment Allowance, and Unemployment Compensation for Federal Employees & Military programs due to their small numbers.

Initial Claims for Unemployment Compensation in Maine  
 4-Week Moving Averages for Regular Program



Continued Claims for Unemployment Compensation in Maine  
 4-Week Moving Averages for Regular Program



Note: Charts do not include data from Dislocated Worker Benefits, Trade Readjustment Allowance, and Unemployment Compensation for Federal Employees & Military programs due to their small numbers.