

**Initial and Continued Claims by Program for Week Ending: 08/27/2016**

Program		Current Week Claims	Last Week			Last Year		
			Claims	Net Change	% Change	Claims	Net Change	% Change
Regular	Initial:	507	560	▼ -53	-9.5	605	▼ -98	-16.2
	Continued:	4,648	4,868	▼ -220	-4.5	5,386	▼ -738	-13.7
Workshare	Initial:	0	0	— 0	0.0	0	— 0	0.0
	Continued:	4	4	— 0	0.0	4	— 0	0.0
Dislocated Worker Benefits	Initial:	3	9	▼ -6	-66.7	15	▼ -12	-80.0
	Continued:	61	89	▼ -28	-31.5	89	▼ -28	-31.5
Trade Readjustment Allowance	Initial:	7	1	▲ 6	600.0	0	▲ 7	0.0
	Continued:	195	201	▼ -6	-3.0	158	▲ 37	23.4
Unemployment Compensation for Federal Employees & Military	Initial:	2	3	▼ -1	-33.3	6	▼ -4	-66.7
	Continued:	42	46	▼ -4	-8.7	50	▼ -8	-16.0
<b>TOTAL ALL PROGRAMS</b>	Initial:	<b>519</b>	<b>573</b>	▼ -54	-9.4	<b>626</b>	▼ -107	-17.1
	Continued:	<b>4,950</b>	<b>5,208</b>	▼ -258	-5.0	<b>5,687</b>	▼ -737	-13.0

**Note:** For DWB and TRA programs, initial and continued claims are due to claimants in approved training exhausting Regular Benefits.

**UNEMPLOYMENT INSURANCE FINANCIAL DATA FOR WEEK ENDING**

**08/06/2016**

Regular Unemployment Insurance Benefits for Week	\$	1,277,923.07
Dislocated Workers Benefits Amount Paid for Week	\$	23,478.00
Trade Readjustment Allowance Benefits Amount Paid for Week	\$	92,621.69
Federal Programs Benefits Amount Paid for Week	\$	18,720.09
Net Amount of UI Contributions for Week	\$	22,410,661.00
Balance Available for UI Benefits as of Week Ending	\$	393,115,586.71
Net Benefits Paid Chargeable to Unemployment Compensation Fund for July 2016	\$	5,254,848.43
Reed Act Disbursements October 2015 - July 2016	\$	523,455.81

**Note:** Regular Benefits paid include reimbursable payments and other disbursements which are reported under the UI Program. Amount Paid may represent Continued Claims tallied in a prior week.

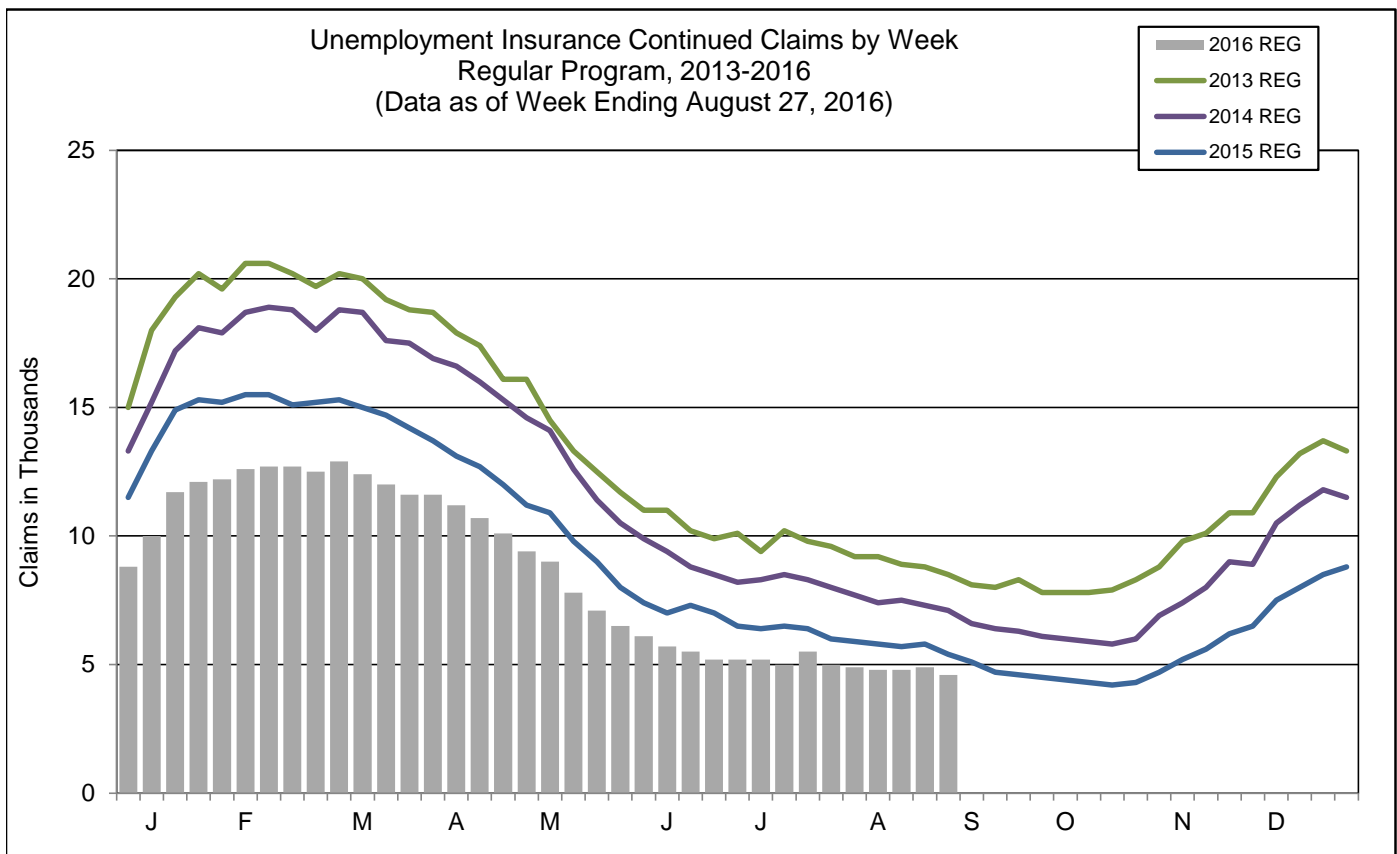
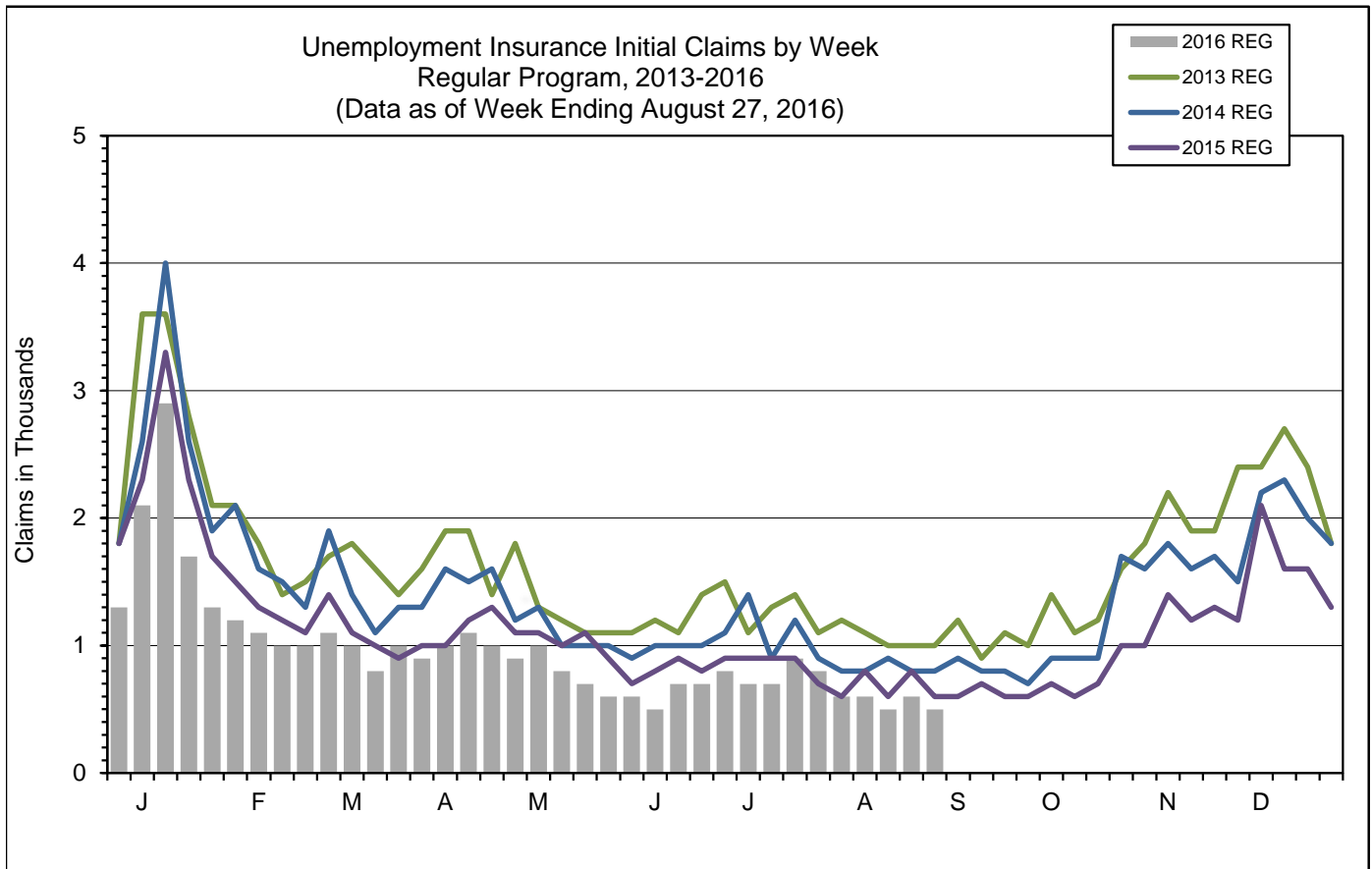
**Extended Benefits Triggers On when the 13-Week Average Insured Unemployment Rate (IUR) reaches 5% and the IUR is 120% or higher than the last 2 years.**

13-Week Average Insured Unemployment Week Ending 08/20/2016	0.91%
120% Threshold - Current IUR as a percent of the average IUR rate in the prior 2 years.	71.09%

IUR is calculated by taking the average of the Continued Claims claims over a rolling 13 week period divided by Covered Employment. Covered Employment is employment that falls under the Unemployment Insurance Program.

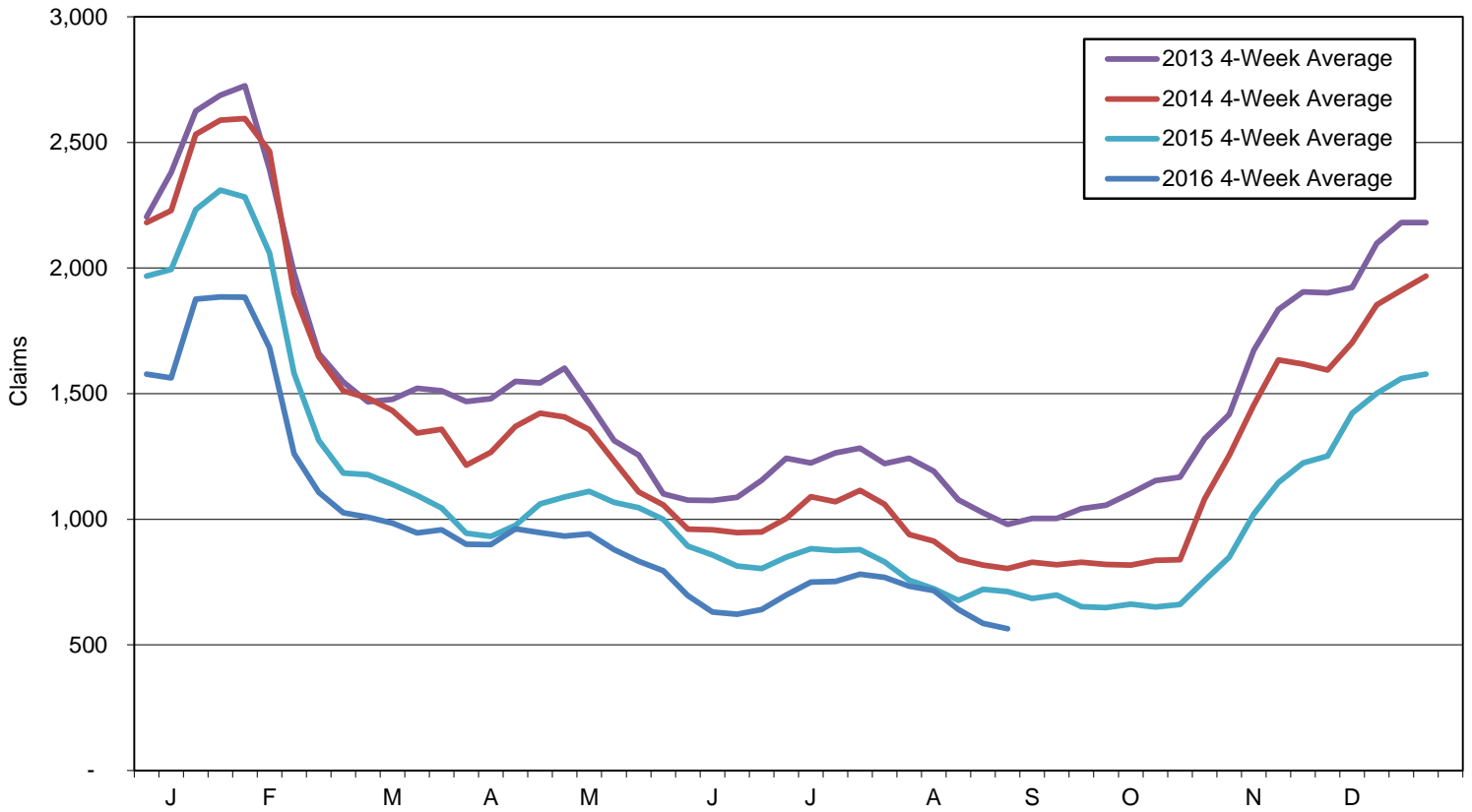
**Mass Layoff Statistics**  
**August 27, 2016**

Year to Date	Number of Unique Employers	Number of Times Employers had 5 or more Initial Claims	Number of Initial Claims
2016	255	743	8,477
2015	251	760	8,330
Percent Change	▲ 1.6%	▼ -2.2%	▲ 1.8%

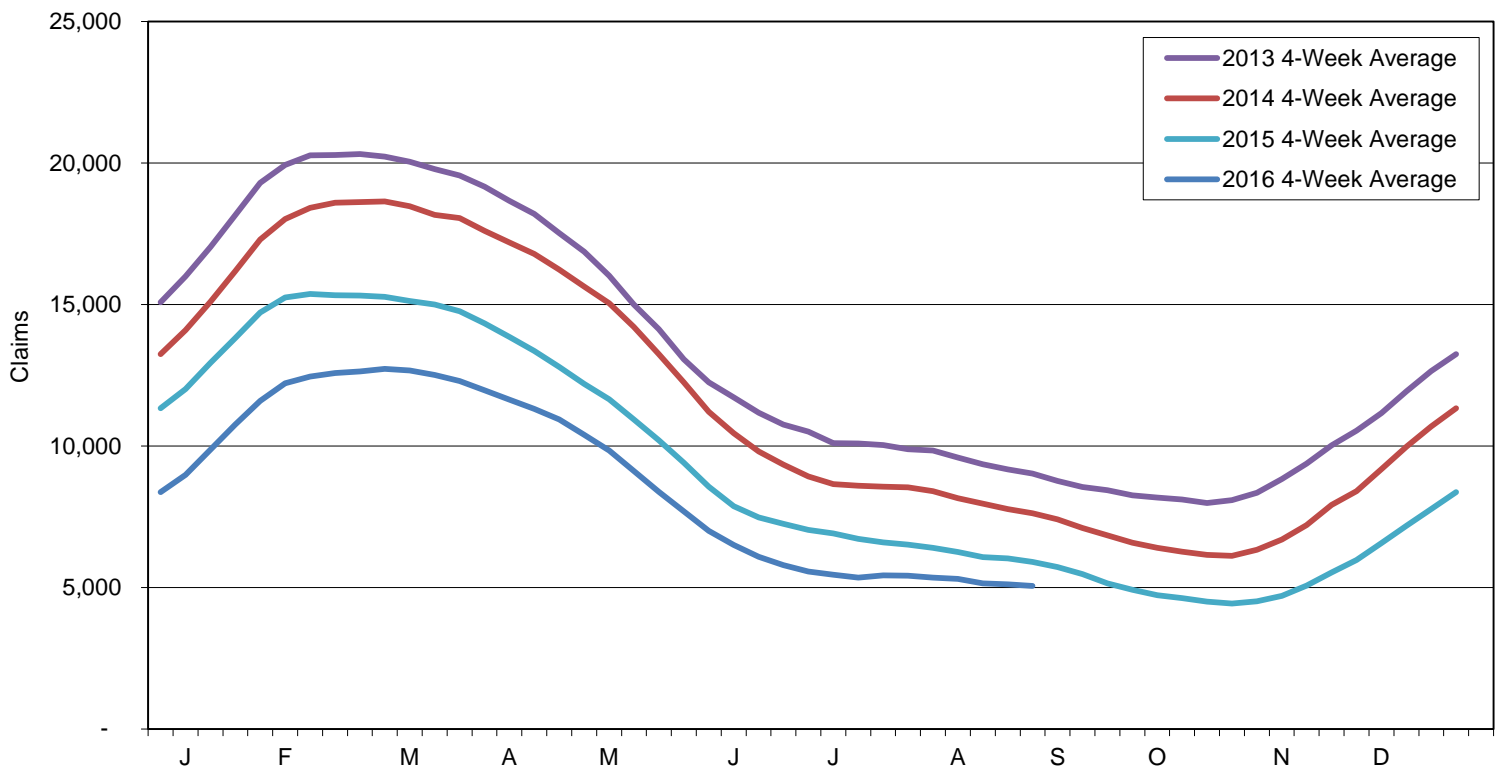


Note: Charts do not include data from Dislocated Worker Benefits, Trade Readjustment Allowance, and Unemployment Compensation for Federal Employees & Military programs due to their small numbers.

Initial Claims for Unemployment Compensation in Maine  
4-Week Moving Averages for Regular Program



Continued Claims for Unemployment Compensation in Maine  
4-Week Moving Averages for Regular Program



Note: Charts do not include data from Dislocated Worker Benefits, Trade Readjustment Allowance, and Unemployment Compensation for Federal Employees & Military programs due to their small numbers.