

## Change in Population of Maine Counties July 1998 to July 1999

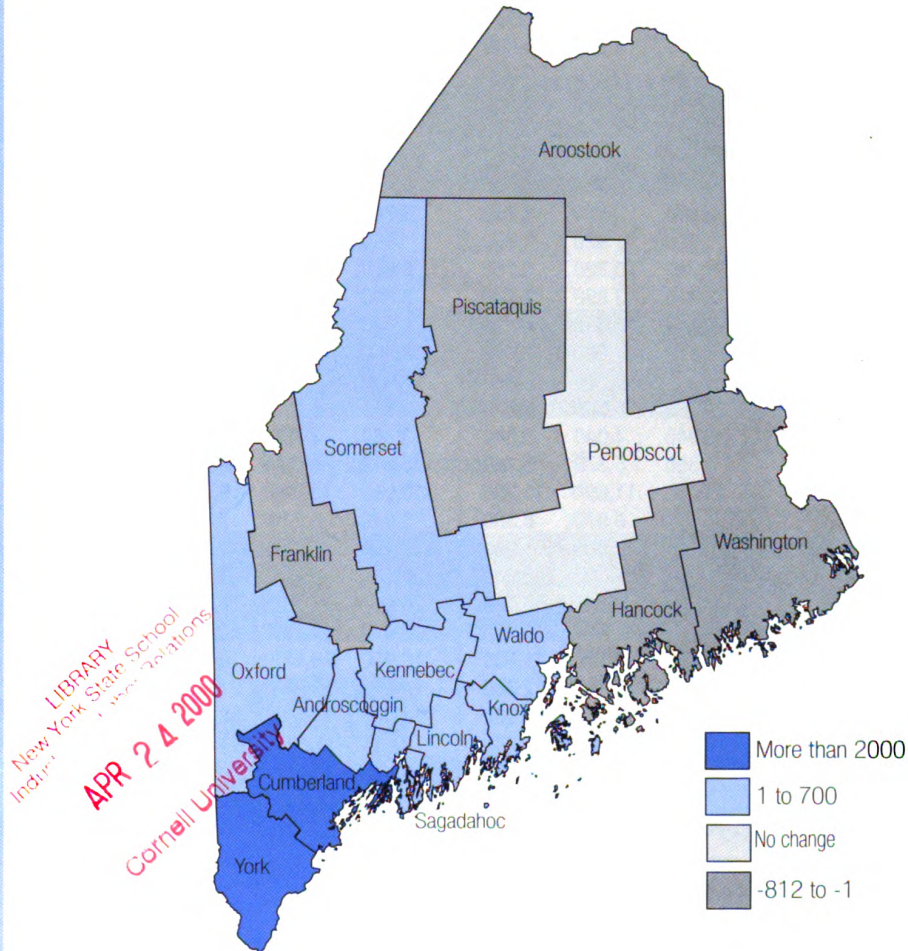
### INSIDE . . .

Cumberland County records lowest unemployment rate ..... page 3

Adjusted statewide unemployment rate drops slightly from 3.5 percent in January to 3.4 percent in February ..... page 4

Nonfarm employment rises by 15,800 over the year, led by services industries ..... page 6

Between 1990 and 1999, ten of sixteen counties recorded population gains ..... page 8



LIBRARY  
 New York State School  
 Industrial Education  
 APR 24 2000  
 Cornell University

A publication of  
 the  
**DEPARTMENT OF LABOR**  
 Labor Market  
 Information Services  
 David A. Fongemie  
 Information Director  
 Diana A. Evans  
 Editor

**For more information, call**  
 Telephone (207) 287-2271  
 FAX (207) 287-2947  
 TTY 1-800-794-1110  
 E-Mail - lmi.me@state.me.us

Visit our Home Page at  
<http://janus.state.me.us/labor/lmis/frdef.htm>

Maine's population increased by 5,486 between July 1998 and July 1999. Ten of Maine's sixteen counties recorded gains, with most of the growth in Cumberland and York counties. Penobscot County remained unchanged. Losses ranged from 55 in Franklin County to 812 in Aroostook County.

The demographic components of population change consist of natural change and net migration. Natural change is defined as births minus deaths. Net migration is the difference between all forms of migration into and out of an area. In four of the five counties recording population losses, there was a net outmigration of population and a natural decline between 1998 and 1999. In Franklin County, a slight natural increase was outweighed by net outmigration.

See page 8 for population estimates and components of change.

### Civilian Labor Force, Employed, and Unemployed by Labor Market Area, Not Seasonally Adjusted

AREA	CIVILIAN LABOR FORCE <sup>1</sup>			EMPLOYED <sup>2</sup>			UNEMPLOYED <sup>3</sup>			UNEMPLOYMENT RATE <sup>4</sup>		
	Feb 00	Jan 00	Feb 99	Feb 00	Jan 00	Feb 99	Feb 00	Jan 00	Feb 99	Feb 00	Jan 00	Feb 99
<b>LABOR MARKET AREAS</b>												
Augusta	46,660	46,220	44,220	44,090	43,840	41,540	2,570	2,380	2,680	5.5%	5.2%	6.1%
Bangor MSA	53,400	51,800	50,800	51,700	50,100	48,900	1,700	1,700	1,900	3.2	3.3	3.7
Bath-Brunswick	35,890	35,160	33,920	34,500	33,720	32,510	1,390	1,440	1,410	3.9	4.1	4.2
Belfast	16,230	15,710	15,060	15,250	14,760	14,020	980	960	1,040	6.0	6.1	6.9
Biddeford	38,310	37,560	36,770	36,960	36,170	35,090	1,350	1,390	1,680	3.5	3.7	4.6
Boothbay Harbor	8,210	8,140	7,810	7,850	7,790	7,410	370	350	400	4.4	4.3	5.1
Bucksport	5,250	5,270	5,080	4,920	4,950	4,710	330	330	380	6.2	6.2	7.4
Calais	5,380	5,370	5,070	4,680	4,710	4,430	700	670	640	13.1	12.4	12.6
Dexter-Pittsfield	12,160	12,370	11,710	11,030	11,190	10,420	1,130	1,180	1,290	9.3	9.5	11.1
Dover-Foxcroft	7,550	7,650	7,200	7,040	7,070	6,640	520	580	560	6.8	7.6	7.7
Ellsworth-Bar Harbor	19,390	19,220	18,070	17,540	17,440	16,180	1,860	1,790	1,890	9.6	9.3	10.5
Farmington	18,840	18,480	18,220	17,460	17,040	16,800	1,380	1,430	1,420	7.3	7.8	7.8
Fort Kent	3,960	3,860	3,790	3,740	3,600	3,480	230	270	300	5.7	6.9	8.0
Greenville	920	920	930	850	850	850	70	70	70	7.1	7.9	7.9
Houlton	6,240	6,320	6,030	6,000	6,060	5,720	240	270	310	3.8	4.2	5.2
Jonesport-Milbridge	3,910	3,890	3,770	3,380	3,390	3,170	520	500	600	13.4	12.8	16.0
Kittery-York <sup>5</sup>	20,840	20,650	19,510	20,490	20,290	19,120	350	360	390	1.7	1.7	2.0
Lewiston-Auburn MSA	54,700	54,800	52,100	52,500	52,600	49,500	2,200	2,100	2,600	4.0	3.9	5.0
Lincoln-Howland	6,310	6,270	5,990	5,920	5,880	5,530	390	390	460	6.2	6.3	7.7
Machias-Eastport	6,780	6,630	6,620	6,310	6,170	5,950	470	460	670	6.9	6.9	10.1
Madawaska	3,940	4,040	3,840	3,760	3,790	3,600	180	250	240	4.5	6.2	6.3
Millinocket-East Millinocket	5,390	5,370	5,160	5,010	4,990	4,720	380	380	440	7.0	7.1	8.4
Norway-Paris	11,720	11,690	11,280	10,910	10,940	10,380	820	740	900	7.0	6.3	8.0
Outer Bangor	8,820	8,970	8,300	8,240	8,370	7,730	580	590	570	6.6	6.6	6.8
Patten-Island Falls	1,870	1,880	1,940	1,740	1,720	1,780	130	160	160	7.0	8.6	8.2
Portland MSA	139,700	140,300	130,600	136,500	137,000	127,100	3,200	3,300	3,400	2.3	2.4	2.6
Presque Isle-Caribou	21,240	21,410	20,110	20,290	20,330	18,900	950	1,080	1,210	4.5	5.0	6.0
Rockland	22,640	22,510	21,530	21,770	21,700	20,640	870	810	890	3.8	3.6	4.1
Rumford	11,610	11,370	11,030	10,950	10,670	10,210	670	700	820	5.7	6.1	7.4
Sanford	23,440	23,470	22,780	22,300	22,310	21,280	1,140	1,170	1,500	4.9	5.0	6.6
Sebago Lakes Region	12,700	12,680	13,080	12,080	12,080	12,210	620	600	870	4.9	4.8	6.6
Skowhegan	16,850	16,870	16,040	15,610	15,550	14,690	1,240	1,320	1,360	7.4	7.8	8.5
Stonington	5,590	5,170	5,280	5,310	4,900	4,970	280	270	320	5.1	5.2	6.0
Van Buren	1,600	1,570	1,520	1,450	1,450	1,380	150	120	140	9.1	7.7	9.3
Waterville	24,890	25,000	24,310	23,600	23,690	22,670	1,290	1,320	1,640	5.2	5.3	6.8
<b>MAINE</b>	<b>682,900</b>	<b>678,600</b>	<b>649,500</b>	<b>651,700</b>	<b>647,100</b>	<b>614,300</b>	<b>31,200</b>	<b>31,500</b>	<b>35,200</b>	<b>4.6</b>	<b>4.6</b>	<b>5.4</b>
<b>UNITED STATES (000)</b>	<b>140,185</b>	<b>139,621</b>	<b>138,202</b>	<b>133,954</b>	<b>133,357</b>	<b>131,639</b>	<b>6,231</b>	<b>6,264</b>	<b>6,563</b>	<b>4.4</b>	<b>4.5</b>	<b>4.7</b>

<sup>1</sup> Civilian labor force, employed, and unemployed estimates are by place of residence. Current month estimates are preliminary; prior month and year-ago estimates are revised. Items may not add due to rounding. All data exclude members of the Armed Forces. MSA stands for Metropolitan Statistical Area.

<sup>2</sup> Total employment includes nonfarm wage and salary workers, agricultural workers, unpaid family workers, domestics, the self employed, and workers involved in labor disputes.

<sup>3</sup> People are classified as unemployed, regardless of their eligibility for unemployment benefits or public assistance, if they meet all of the following criteria: 1) they were not employed during the survey week; 2) they were available for work at that time; and 3) they made specific efforts to find employment some time during the prior four weeks. Persons laid off from their former jobs and awaiting recall and those expecting to report to a job within 30 days need not be looking for work to be counted as unemployed.

<sup>4</sup> The unemployment rate is calculated by dividing the total number of unemployed by the total civilian labor force, and is expressed as a percent.

<sup>5</sup> Kittery-York is the five-town Maine portion of the Portsmouth-Rochester PMSA which includes towns in both Maine and New Hampshire.

Source: Maine Department of Labor, Labor Market Information Services, in cooperation with the U.S. Department of Labor, Bureau of Labor Statistics.

**Civilian Labor Force, Employed, and Unemployed  
by County, Not Seasonally Adjusted<sup>1</sup>**

AREA	CIVILIAN LABOR FORCE			EMPLOYED			UNEMPLOYED			UNEMPLOYMENT RATE		
	Feb 00	Jan 00	Feb 99	Feb 00	Jan 00	Feb 99	Feb 00	Jan 00	Feb 99	Feb 00	Jan 00	Feb 99
<b>COUNTY</b>												
Androscoggin	61,480	61,460	58,580	58,760	58,800	55,470	2,720	2,660	3,090	4.4%	4.3%	5.3%
Aroostook	38,460	38,710	36,790	36,600	36,570	34,440	1,860	2,140	2,350	4.8	5.5	6.4
Cumberland	146,530	146,770	137,640	142,840	142,960	133,670	3,700	3,820	3,970	2.5	2.6	2.9
Franklin	15,770	15,440	15,270	14,760	14,410	14,200	1,000	1,030	1,070	6.4	6.7	7.0
Hancock	27,640	27,080	26,000	25,370	24,890	23,600	2,270	2,190	2,400	8.2	8.1	9.2
Kennebec	61,010	60,750	58,290	57,850	57,690	54,840	3,150	3,060	3,450	5.2	5.0	5.9
Knox	19,830	19,720	18,860	19,040	18,980	18,060	790	740	800	4.0	3.8	4.2
Lincoln	16,870	16,700	16,040	16,150	15,990	15,250	730	710	800	4.3	4.2	5.0
Oxford	27,550	27,260	26,800	25,840	25,590	24,680	1,710	1,670	2,120	6.2	6.1	7.9
Penobscot	80,470	79,130	76,590	76,770	75,380	72,470	3,700	3,750	4,130	4.6	4.7	5.4
Piscataquis	8,590	8,700	8,240	8,000	8,030	7,600	590	670	640	6.9	7.7	7.8
Sagadahoc	16,750	16,430	15,810	16,140	15,770	15,210	610	660	600	3.6	4.0	3.8
Somerset	25,970	26,090	25,000	24,050	24,070	22,710	1,920	2,020	2,280	7.4	7.7	9.1
Waldo	22,200	21,560	20,740	20,750	20,220	19,280	1,450	1,350	1,460	6.5	6.2	7.0
Washington	16,470	16,290	15,820	14,730	14,630	13,880	1,740	1,660	1,940	10.6	10.2	12.3
York	97,330	96,470	93,020	94,070	93,130	88,930	3,260	3,340	4,090	3.3	3.5	4.4
<b>MAINE</b>	<b>682,900</b>	<b>678,600</b>	<b>649,500</b>	<b>651,700</b>	<b>647,100</b>	<b>614,300</b>	<b>31,200</b>	<b>31,500</b>	<b>35,200</b>	<b>4.6</b>	<b>4.6</b>	<b>5.4</b>
<b>UNITED STATES (000)</b>	<b>140,185</b>	<b>139,621</b>	<b>138,202</b>	<b>133,954</b>	<b>133,357</b>	<b>131,639</b>	<b>6,231</b>	<b>6,264</b>	<b>6,563</b>	<b>4.4</b>	<b>4.5</b>	<b>4.7</b>

<sup>1</sup> See page 2 for footnotes 1 through 4 and source.

**Area Analyst's Corner**

**Central Area**

Ken Bridges (207) 624-5199

**Carleton Woolen Mill** in Winthrop recalled approximately 120 workers after obtaining financing to restart operations. ♦ **Avian Farms** in Waterville laid off approximately 25 workers. ♦ **SAPPI** paper mill in Skowhegan laid off about 25 employees. ♦ **The U.S. Census Bureau** is in the midst of hiring approximately 200 enumerators in the central Maine area for the 2000 Census. These jobs are expected to last up to three months.

**Western Area**

Gerard Dennison (207) 783-5314

**KBS Inc.** will build a new 124,000 square foot manufacturing plant in Oxford which will produce 600 double wide modular trailer homes annually. Scheduled to open in the fall, the plant will provide 150 new jobs. ♦ **Diamond Pheonix** recently opened a new \$5 million, 103,000 square foot manufacturing plant in Lewiston's Turnpike Industrial Park, adding 30 to 75 new jobs. ♦ **Falcon Rule** is scheduled to open a new \$3 million manufacturing plant in Auburn's Kittyhawk Industrial Park in April, adding up to 20 new jobs.

**North/East Area**

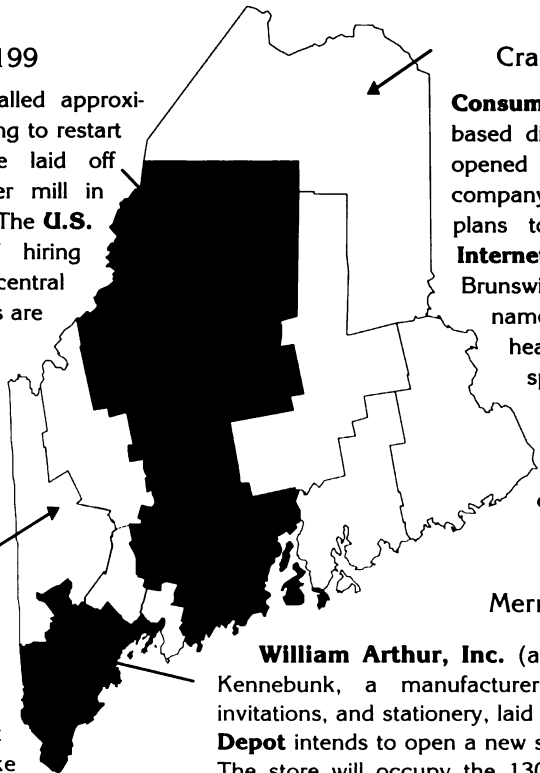
Craig Holland (207) 941-3076

**Consumer Response Services**, a Biddeford-based direct response call center, recently opened a new facility in Brewer. The company has hired over 20 employees and plans to add about 280 more. ♦ **Aliant Internet LLC**, a subsidiary of St. John, New Brunswick-based Aliant, Inc., changed its name to Prexar and will be locating its headquarters in Bangor. Prexar, which specializes in Internet access and other Internet-protocol products and services, will add about 80 employees as part of its business expansion.

**Southern Area**

Merrill Huhtala (207) 775-5891

**William Arthur, Inc.** (a subsidiary of Hallmark Cards) in Kennebunk, a manufacturer of high-quality greeting cards, invitations, and stationery, laid off 48 of its 450 employees. ♦ **Home Depot** intends to open a new store this summer in South Portland. The store will occupy the 130,000 square foot building formerly occupied by Home Quarters Warehouse. Stores of this size typically employ 200 to 300 workers. ♦ **GoFish.com**, of Portland, already in receipt of \$20 million in venture capital, will receive an additional \$12 million from CMGI Ventures, of Andover Massachusetts.



**Civilian Labor Force, Employed, and Unemployed in Maine, Seasonally Adjusted (in thousands)**

ITEM	2000		1999											
	Feb	Jan	Dec	Nov	Oct	Sep	Aug	Jul	Jun	May	Apr	Mar	Feb	
Civilian Labor Force	695.8	692.1	686.9	683.7	680.9	678.3	673.6	671.2	671.0	668.5	665.5	663.3	661.1	
Employed	671.9	667.8	661.8	658.3	654.5	650.8	645.9	644.3	641.0	638.5	637.4	635.2	633.3	
Unemployed	24.0	24.3	25.1	25.5	26.4	27.5	27.7	27.0	29.9	29.9	28.2	28.1	27.8	
Unemployment Rate (%)	3.4	3.5	3.7	3.7	3.9	4.1	4.1	4.0	4.5	4.5	4.2	4.2	4.2	

<sup>1</sup> See page 2 for footnotes 1 through 4 and source.

**Nonfarm Wage and Salary Employment in Maine, Seasonally Adjusted<sup>1</sup> (in thousands)**

INDUSTRY	2000		1999											
	Feb	Jan	Dec	Nov	Oct	Sep	Aug	Jul	Jun	May	Apr	Mar	Feb	
Nonfarm Wage and Salary Employment <sup>2</sup>	597.8	593.1	593.1	591.8	590.2	588.8	586.2	586.1	584.9	582.7	583.2	582.7	581.0	
Construction	30.8	29.7	29.4	29.1	28.8	28.6	28.3	28.2	28.0	27.1	27.8	27.6	27.0	
Manufacturing	86.2	86.2	86.2	86.2	85.9	86.0	85.8	85.8	86.0	85.8	85.8	86.7	86.6	
Durable Goods	43.4	43.3	43.2	43.2	42.9	43.0	42.8	42.7	42.8	42.8	42.8	42.9	42.7	
Nondurable Goods	42.8	42.9	43.0	43.0	43.0	43.0	43.0	43.1	43.2	43.0	43.0	43.8	43.9	
Transportation and Public Utilities	23.8	23.8	23.9	23.9	24.0	24.0	24.0	24.0	24.0	23.9	23.9	24.0	23.9	
Wholesale Trade	28.1	28.1	27.9	27.8	27.6	27.6	27.4	27.3	27.2	27.1	27.2	26.8	26.6	
Retail Trade	121.8	120.9	120.9	120.6	119.8	118.9	118.8	118.9	118.6	118.6	118.8	118.7	118.5	
Finance, Insurance, and Real Estate	31.1	31.1	31.1	31.2	31.1	31.0	31.0	31.0	31.1	31.0	30.9	30.9	30.8	
Services	178.0	176.2	176.9	176.3	176.1	175.6	175.5	175.0	174.2	173.3	172.8	172.0	171.4	
Government	97.9	97.0	96.7	96.6	96.8	97.0	95.3	95.8	95.7	95.8	95.9	95.9	96.1	

<sup>1</sup> See footnotes 1 and 2 on page 6. <sup>2</sup> Mining employment is not suitable for seasonal adjustment because it has very little seasonal and irregular movement. Thus, the not-seasonally-adjusted series is used as a component of the seasonally adjusted total nonfarm wage and salary employment estimate. Source: See page 2.

**February Unemployment Rate Fell to 3.4 Percent**

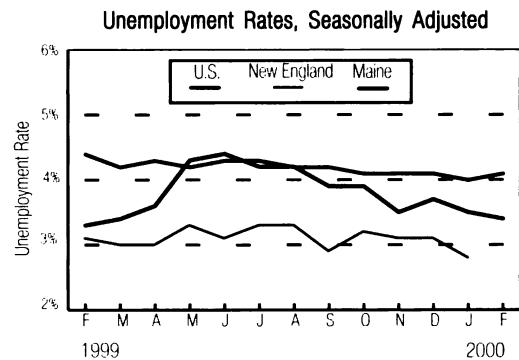
State Labor Commissioner Valerie Landry has announced that the seasonally-adjusted February unemployment rate for Maine was 3.4 percent, down from 3.5 percent in January and 4.2 percent in February 1999.

"The February unemployment rate of 3.4 percent is the lowest seasonally-adjusted rate recorded for Maine since the rate of 3.4 percent for February 1989," said Commissioner Landry.

Seasonally-adjusted nonfarm wage and salary jobs rose by 4,700 between January and February to 597,800, with gains in services, construction, retail trade, and government. Between February 1999 and February 2000 nonfarm jobs increased by 16,800, with a gain of 6,600 in services. Job growth also was recorded in construction, retail trade, government, and wholesale trade.

The other New England state reporting a seasonally-adjusted February unemployment rate was New Hampshire at 2.6 percent. The adjusted national rate for February was 4.1 percent.

The not-seasonally unemployment rate for February was 4.6 percent, unchanged from January and down from 5.4 percent in February 1999. The unadjusted national rate was 4.4 percent, down from 4.5 percent in January and 4.7 percent in February 1999. Not-seasonally-adjusted



February unemployment rates for Maine counties ranged from 2.5 percent in Cumberland County to 10.6 percent in Washington County.

Not-seasonally-adjusted nonfarm wage and salary jobs rose seasonally by 6,100 between January and February. State and local government jobs combined rose by 4,400 as winter vacation breaks ended in schools and the university system, and educational services jobs rose by 2,100 due to the end of winter breaks at private educational institutions. Retail trade fell seasonally by 1,100 due to the end of the holiday shopping season. Construction jobs dropped by 600 as winter weather reduced building activity.

**Selected Regular Unemployment Compensation Program Indicators**

Key Data	Feb 2000	Jan 2000	Feb 1999
Average Duration	14.5	14.4	14.4
Average Weekly Benefit Amount*	\$197.73	\$195.12	\$186.91
Exhaustees	1,164	1,993	1,446

\* For totally unemployed claimants, excluding dependency allowances.

**Weekly Initial Claims**

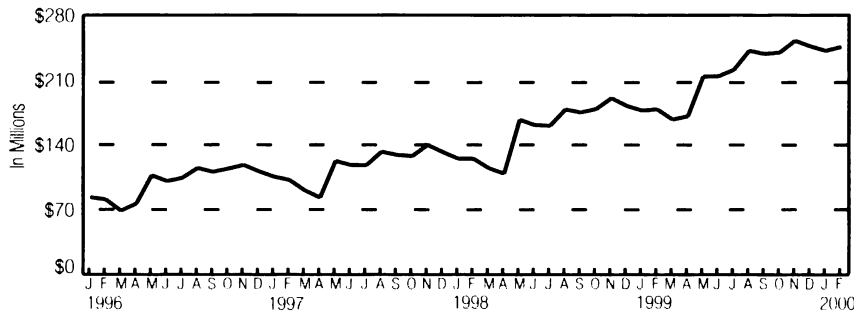
Week	3/4	2/26	2/12	2/5	1/29	1/22	1/15
2000	1,174	1,291	1,394	1,561	1,650	2,013	2,638
Week	3/6	2/27	2/20	2/13	2/6	1/30	1/23
1999	1,404	1,867	1,630	2,037	1,765	2,790	2,291

**Continued Claims Less Partials\***

Feb 2000	Jan 2000	Feb 1999
11,022	10,533	12,316

\* For the week including the 12<sup>th</sup> of the month.

Monthly Unemployment Insurance Trust Fund Balance

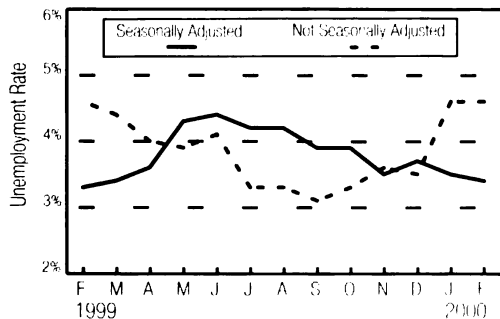


Between February 1999 and February 2000, not-seasonally-adjusted nonfarm wage and salary jobs rose by 15,800. Services rose by 6,600, largely in social services, educational services, business services, and other services. Construction; retail trade; government; wholesale trade; and finance, insurance, and real estate also recorded job gains.

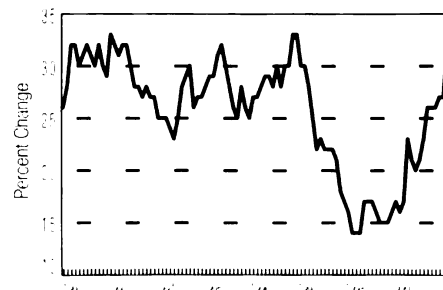
**U.S. Consumer Price Index for all urban consumers (CPI-U)**

Item	Feb 00	Jan 00	Feb 99	Dec 99
(1982-1984 = 100) All Items	169.7	168.7	164.5	168.3
Percent Change from Prior Month	+0.6%			
Percent Change from 12 Months Ago	+3.2%			
Percent change from Last December	+0.8%			

Unemployment Rates for Maine



Over-the-Year Change in CPI-U



## Nonfarm Wage and Salary Employment, Not Seasonally Adjusted (in thousands)

INDUSTRY	MAINE			PORTLAND MSA			LEWISTON-AUBURN MSA		
	Feb 00	Jan 00	Feb 99	Feb 00	Jan 00	Feb 99	Feb 00	Jan 00	Feb 99
<b>Nonfarm Wage and Salary Employment<sup>1</sup></b>	<b>577.8</b>	<b>571.7</b>	<b>562.0</b>	<b>147.4</b>	<b>147.9</b>	<b>142.3</b>	<b>43.9</b>	<b>43.9</b>	<b>43.2</b>
<b>Goods Producing</b>	<b>111.3</b>	<b>112.3</b>	<b>108.5</b>	<b>22.0</b>	<b>22.4</b>	<b>20.8</b>	<b>9.5</b>	<b>9.6</b>	<b>9.3</b>
<b>Mining</b>	<b>0.1</b>	<b>0.1</b>	<b>0.1</b>	*	*	*	*	*	*
<b>Construction</b>	<b>25.9</b>	<b>26.5</b>	<b>22.7</b>	<b>6.8</b>	<b>7.0</b>	<b>6.2</b>	<b>1.5</b>	<b>1.5</b>	<b>1.5</b>
Building Construction	6.6	6.7	5.9	1.4	1.5	1.2	.	.	.
Heavy Construction	3.9	4.1	2.7	.	.	.	.	.	.
Special Trade Contractors	15.4	15.7	14.1	5.0	5.2	4.7	.	.	.
<b>Manufacturing</b>	<b>85.3</b>	<b>85.7</b>	<b>85.7</b>	<b>15.2</b>	<b>15.4</b>	<b>14.6</b>	<b>8.0</b>	<b>8.1</b>	<b>7.8</b>
<b>Durable Goods</b>	<b>43.3</b>	<b>43.3</b>	<b>42.6</b>	<b>7.6</b>	<b>7.9</b>	<b>6.9</b>	<b>2.4</b>	<b>2.4</b>	<b>2.3</b>
Lumber and Wood Products	10.9	10.9	10.7	.	.	.	.	.	.
Primary and Fabricated Metals	3.6	3.6	3.7	.	.	.	.	.	.
Industrial Machinery and Equipment	4.6	4.6	4.4	1.6	1.6	1.6	.	.	.
Electronic and Other Electrical Equipment	7.7	7.6	7.1	2.9	2.9	2.8	.	.	.
Transportation Equipment	11.3	11.3	11.5	.	.	.	.	.	.
Other Durable Goods	5.2	5.3	5.2	3.1	3.4	2.5	.	.	.
<b>Nondurable Goods</b>	<b>42.0</b>	<b>42.4</b>	<b>43.1</b>	<b>7.6</b>	<b>7.5</b>	<b>7.7</b>	<b>5.6</b>	<b>5.7</b>	<b>5.5</b>
Food and Kindred Products	6.4	6.5	6.5	2.4	2.4	2.3	.	.	.
Textile Mill Products	3.0	3.0	3.3	.	.	.	.	.	.
Apparel and Other Textile Products	2.5	2.4	2.3	.	.	.	.	.	.
Paper and Allied Products	13.3	13.6	13.7	.	.	.	.	.	.
Printing and Publishing	6.2	6.3	5.9	1.6	1.6	1.7	.	.	.
Rubber and Misc. Plastic Products	2.9	2.9	3.0	.	.	.	.	.	.
Leather and Leather Products	5.9	5.9	6.6	0.8	0.8	0.8	0.9	0.9	0.9
Other Nondurable Goods	1.8	1.8	1.8	2.8	2.7	2.9	4.7	4.8	4.6
<b>Service Producing</b>	<b>466.5</b>	<b>459.4</b>	<b>453.5</b>	<b>125.4</b>	<b>125.5</b>	<b>121.5</b>	<b>34.4</b>	<b>34.3</b>	<b>33.9</b>
<b>Transportation and Public Utilities</b>	<b>23.3</b>	<b>23.3</b>	<b>23.4</b>	<b>6.8</b>	<b>6.9</b>	<b>6.7</b>	<b>1.9</b>	<b>1.9</b>	<b>1.9</b>
<b>Wholesale Trade</b>	<b>27.5</b>	<b>27.3</b>	<b>26.1</b>	<b>9.3</b>	<b>9.2</b>	<b>8.9</b>	<b>2.5</b>	<b>2.5</b>	<b>2.3</b>
<b>Retail Trade</b>	<b>111.7</b>	<b>112.8</b>	<b>108.7</b>	<b>30.7</b>	<b>31.7</b>	<b>30.5</b>	<b>8.3</b>	<b>8.5</b>	<b>8.4</b>
General Merchandise Stores	11.3	11.7	11.0	.	.	.	.	.	.
Food Stores	22.4	22.5	21.5	.	.	.	.	.	.
Automotive Sales and Services	13.9	13.9	13.3	.	.	.	.	.	.
Eating and Drinking Places	30.3	30.0	30.3	8.1	8.1	7.8	.	.	.
Other Retail Trade	33.8	34.7	32.6	.	.	.	.	.	.
<b>Finance, Insurance, and Real Estate</b>	<b>30.8</b>	<b>30.9</b>	<b>30.5</b>	<b>13.8</b>	<b>13.8</b>	<b>13.6</b>	<b>2.4</b>	<b>2.4</b>	<b>2.5</b>
Banking	9.4	9.4	9.0	.	.	.	.	.	.
Insurance Carriers, Brokers and Agents	12.4	12.5	13.2	.	.	.	.	.	.
Other Finance, Insurance, and Real Estate	9.0	9.0	8.3	.	.	.	.	.	.
<b>Services</b>	<b>172.4</b>	<b>168.7</b>	<b>165.8</b>	<b>45.4</b>	<b>45.2</b>	<b>42.7</b>	<b>14.1</b>	<b>14.0</b>	<b>13.6</b>
Hotels and Other Lodging Places	7.1	6.8	6.9	.	.	.	.	.	.
Business Services	22.3	21.8	21.6	.	.	.	.	.	.
Health Services	56.3	56.2	55.9	.	.	.	.	.	.
Educational Services	17.1	15.0	15.5	.	.	.	.	.	.
Social Services	24.5	24.0	22.6	.	.	.	.	.	.
Other Services	45.1	44.9	43.3	.	.	.	.	.	.
<b>Government</b>	<b>100.8</b>	<b>96.4</b>	<b>99.0</b>	<b>19.4</b>	<b>18.7</b>	<b>19.1</b>	<b>5.2</b>	<b>5.0</b>	<b>5.2</b>
Federal	13.2	13.2	13.2	2.5	2.5	2.4	0.3	0.3	0.3
State	28.0	24.5	27.2	5.2	4.6	5.1	0.7	0.7	0.8
Local <sup>2</sup>	59.6	58.7	58.6	11.7	11.6	11.6	4.2	4.0	4.1

<sup>1</sup> Nonfarm wage and salary employment estimates include all full- and part-time wage and salary workers who worked during or received pay for the pay period which includes the 12th of the month. Domestic workers in private households, proprietors, the self-employed, and unpaid family workers are excluded. Estimates measure the number of jobs by industry. Current month's estimates are preliminary; prior month and year-ago estimates are revised. These estimates are benchmarked to March 1998. As a measure of reliability, the March 1998 benchmark revision for total nonfarm wage and salary employment was .07 percent higher than the original sample-based estimate.

<sup>2</sup> Regular teachers are included in summer months whether or not specifically paid in those months.

\* Where an employment estimate is not entered, either the data is not available in sufficient detail for publication or is nondisclosable by law.

Source: See page 2.

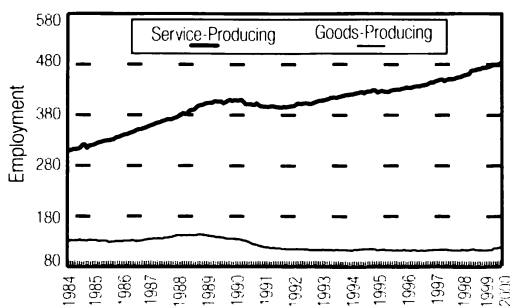
## Earnings and Hours of Production Workers in Manufacturing Industries<sup>1</sup> Not Seasonally Adjusted

AREA AND INDUSTRY	AVERAGE WEEKLY EARNINGS			AVERAGE WEEKLY HOURS			AVERAGE HOURLY EARNINGS			ANNUAL AVERAGE HOURLY EARNINGS		
	Feb 00	Jan 00	Feb 99	Feb 00	Jan 00	Feb 99	Feb 00	Jan 00	Feb 99	1999	1998	1997
<b>STATEWIDE</b>												
<b>Manufacturing</b>	<b>\$588.89</b>	<b>\$586.64</b>	<b>\$560.39</b>	<b>41.5</b>	<b>41.4</b>	<b>40.2</b>	<b>\$14.19</b>	<b>\$14.17</b>	<b>\$13.94</b>	<b>\$13.97</b>	<b>\$13.49</b>	<b>\$13.12</b>
<b>Durable Goods</b>	<b>558.36</b>	<b>571.47</b>	<b>549.92</b>	<b>41.7</b>	<b>42.3</b>	<b>41.1</b>	<b>13.39</b>	<b>13.51</b>	<b>13.38</b>	<b>13.12</b>	<b>12.99</b>	<b>12.72</b>
Lumber and Wood Products	477.97	499.76	467.84	42.6	43.8	42.3	11.22	11.41	11.06	10.84	10.46	10.32
Primary and Fabricated Metals	517.79	512.50	504.30	40.9	41.0	40.9	12.66	12.50	12.33	12.52	12.33	11.55
Industrial Machinery and Equipment	711.23	711.73	654.67	45.1	45.8	45.4	15.77	15.54	14.42	14.67	14.33	14.66
Electronic and Other Electric Equipment	534.74	549.03	507.78	45.9	47.7	43.4	11.65	11.51	11.70	11.65	11.48	11.13
Transportation Equipment	671.33	678.95	687.79	37.4	36.7	37.4	17.95	18.50	18.39	17.78	17.60	16.77
Other Durable Goods	406.38	436.11	415.79	39.0	39.9	39.3	10.42	10.93	10.58	10.53	10.40	10.27
<b>Nondurable Goods</b>	<b>620.06</b>	<b>602.36</b>	<b>570.36</b>	<b>41.2</b>	<b>40.4</b>	<b>39.2</b>	<b>15.05</b>	<b>14.91</b>	<b>14.55</b>	<b>14.87</b>	<b>14.01</b>	<b>13.50</b>
Food and Kindred Products	424.77	418.37	375.61	41.2	40.5	37.3	10.31	10.33	10.07	10.19	10.03	9.85
Textile Mill Products	528.44	504.68	405.45	46.6	44.0	37.3	11.34	11.47	10.87	10.98	10.50	9.97
Apparel and Other Textile Products	430.13	407.29	356.45	41.2	39.2	37.6	10.44	10.39	9.48	10.02	9.57	9.52
Paper and Allied Products	950.24	891.18	895.48	42.9	41.8	42.2	22.15	21.32	21.22	21.94	20.23	19.44
Leather and Leather Products	394.61	396.54	370.93	39.5	39.3	38.8	9.99	10.09	9.56	9.78	9.31	8.88
Other Nondurable Goods	485.20	503.87	458.67	37.7	37.8	36.9	12.87	13.33	12.43	12.66	12.12	11.65
<b>PORTLAND MSA</b>												
<b>Manufacturing</b>	<b>507.61</b>	<b>522.10</b>	<b>469.68</b>	<b>42.8</b>	<b>43.4</b>	<b>40.7</b>	<b>11.86</b>	<b>12.03</b>	<b>11.54</b>	<b>11.63</b>	<b>11.42</b>	<b>11.28</b>
<b>LEWISTON-AUBURN MSA</b>												
<b>Manufacturing</b>	<b>528.34</b>	<b>535.93</b>	<b>488.76</b>	<b>41.7</b>	<b>42.1</b>	<b>40.9</b>	<b>12.67</b>	<b>12.73</b>	<b>11.95</b>	<b>12.33</b>	<b>11.86</b>	<b>11.13</b>

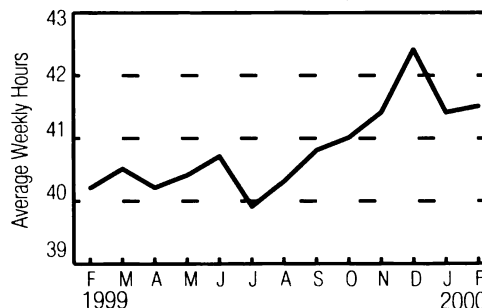
<sup>1</sup> Hours worked and earnings data are computed based on payroll figures for the week including the 12th of the month for manufacturing production workers. Average hourly earnings are calculated on a gross basis, and include such factors as premium pay for overtime and shift differential, as well as changes in basic hourly and incentive rates of pay. Average weekly earnings are the product of weekly hours worked and hourly earnings.

Source: See page 2.

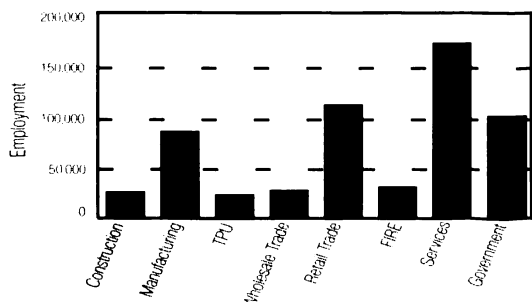
**Nonfarm Employment by Sector  
January 1984-February 2000, Maine<sup>1</sup>**



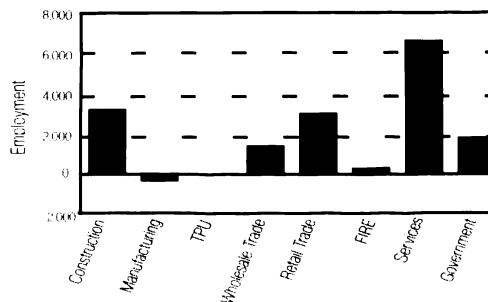
**Hours Worked by Manufacturing  
Production Workers, Maine<sup>2</sup>**



**Nonfarm Employment by Industry Division  
Maine, February 2000<sup>2</sup>**



**Nonfarm Employment by Industry Division  
Maine, Over-the-Year Change, February 2000<sup>2</sup>**



<sup>1</sup> Seasonally Adjusted. <sup>2</sup> Not Seasonally Adjusted

## Population Change of Maine and Maine Counties

### Population and Components of Change, July, 1998 to 1999

Area	Year		Change		Components of Change		
	1998	1999	Net	Percent	Births	Deaths	Net Migration <sup>1</sup>
<b>Maine</b>	<b>1,247,554</b>	<b>1,253,040</b>	<b>5,486</b>	<b>0.4</b>	<b>13,793</b>	<b>12,164</b>	<b>4,138</b>
Androscoggin	101,266	101,337	71	0.1	1,186	1,036	-40
Aroostook	76,648	75,836	-812	-1.1	777	850	-734
Cumberland	254,429	256,437	2,008	0.8	3,077	2,336	1,341
Franklin	28,852	28,797	-55	-0.2	286	265	-67
Hancock	49,840	49,670	-170	-0.3	461	544	-71
Kennebec	115,115	115,224	109	0.1	1,208	1,174	122
Knox	37,985	38,193	208	0.5	403	411	224
Lincoln	31,760	31,947	187	0.6	310	303	189
Oxford	53,845	54,288	443	0.8	545	633	533
Penobscot	144,431	144,432	1	0.0	1,467	1,333	-76
Piscataquis	18,191	18,077	-114	-0.6	177	220	-65
Sagadahoc	35,651	36,267	616	1.7	405	268	474
Somerset	52,420	52,630	210	0.4	592	532	165
Waldo	36,529	36,965	436	1.2	408	303	333
Washington	35,573	35,352	-221	-0.6	385	450	-153
York	175,019	177,588	2,569	1.5	2,106	1,506	1,963

### Population and Components of Change, April 1990 to July 1999

Area	Year		Change		Components of Change		
	1990	1999	Net	Percent	Births	Deaths	Net Migration <sup>1</sup>
<b>Maine</b>	<b>1,227,928</b>	<b>1,253,040</b>	<b>25,112</b>	<b>2.0</b>	<b>137,791</b>	<b>107,664</b>	<b>-3,452</b>
Androscoggin	105,259	101,337	-3,922	-3.7	11,994	9,310	-6,329
Aroostook	86,936	75,836	-11,100	-12.8	8,695	7,425	-13,063
Cumberland	243,135	256,437	13,302	5.5	29,475	20,519	4,737
Franklin	29,008	28,797	-211	-0.7	2,994	2,363	-753
Hancock	46,948	49,670	2,722	5.8	4,806	4,916	2,867
Kennebec	115,904	115,224	-680	-0.6	12,377	10,296	-2,468
Knox	36,310	38,193	1,883	5.2	3,852	3,798	1,949
Lincoln	30,357	31,947	1,590	5.2	3,101	2,974	1,549
Oxford	52,602	54,288	1,686	3.2	5,591	5,234	1,475
Penobscot	146,601	144,432	-2,169	-1.5	15,137	11,806	-5,153
Piscataquis	18,653	18,077	-576	-3.1	1,734	1,969	-273
Sagadahoc	33,535	36,267	2,732	8.1	4,080	2,511	1,090
Somerset	49,767	52,630	2,863	5.8	5,688	4,580	1,885
Waldo	33,018	36,965	3,947	12.0	3,856	2,860	3,039
Washington	35,308	35,352	44	0.1	3,773	3,856	191
York	164,587	177,588	13,001	7.9	20,638	13,247	5,805

<sup>1</sup>Includes net domestic migration and net international migration.

Source: U.S. Department of Commerce, Bureau of the Census.

Note: Components of change may not add to change due to statistical residual which is not shown in this table.

If you do **NOT** desire to continue receiving this publication, check here  and return this cover to the address below.

If your address has changed, please indicate change and return this cover to the address below.

**Maine Department of Labor**  
**Labor Market Information Services**  
 20 Union Street  
 Augusta, Maine 04330-6826

**PRESORTED FIRST CLASS MAIL**  
**POSTAGE PAID**  
**US DEPT. OF LABOR**  
**PERMIT NO. G-12**

**OFFICIAL BUSINESS**  
**PENALTY FOR PRIVATE USE \$300**  
 RETURN SERVICE REQUESTED