

# Maine Department of Labor

## LABOR MARKET DIGEST

December Data

February 1998

### INSIDE ...

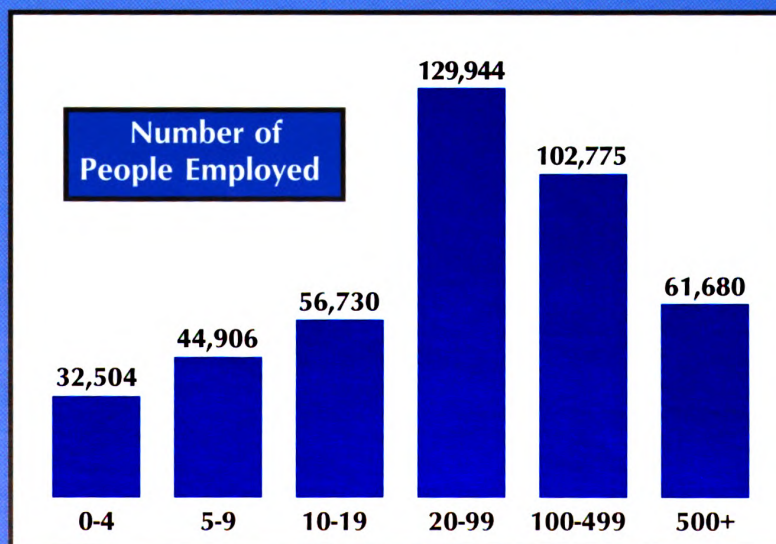
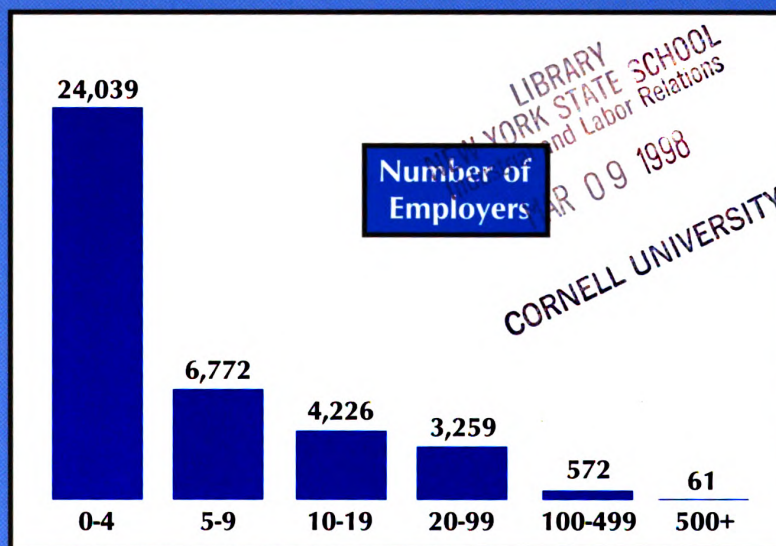
Cumberland County recorded lowest unemployment rate in the state ..... page 3

Adjusted unemployment increased between November and December ..... page 4

Nonfarm employment fell slightly over the month ..... page 6

Over 60 percent of Maine employers have fewer than 5 employees ..... page 8

### Private Employers and Employment by Establishment Size Maine, March 1997



Note: March 1997 data for private establishments under the Maine Employment Security Law. See related table on page 8.

A publication of the  
DEPARTMENT OF LABOR  
Labor Market Information Services  
John A. Fongemie  
Commissioner  
Deborah A. Evans  
Editor

For more information, call  
Telephone (207) 287-2271  
FAX (207) 287-2947  
TDD 1-800-794-1110  
E-Mail - lmi.me@state.me.us

Visit our Home Page at  
<http://ecuvax.cis.ecu.edu/~mainelmi/maine.html>

### Civilian Labor Force, Employed, and Unemployed by Labor Market Area, Not Seasonally Adjusted

AREA	CIVILIAN LABOR FORCE <sup>1</sup>			EMPLOYED <sup>2</sup>			UNEMPLOYED <sup>3</sup>			UNEMPLOYMENT RATE <sup>4</sup>		
	Dec 97	Nov 97	Dec 96	Dec 97	Nov 97	Dec 96	Dec 97	Nov 97	Dec 96	Dec 97	Nov 97	Dec 96
LABOR MARKET AREAS												
Augusta	46,480	46,200	46,780	44,060	44,050	44,700	2,420	2,150	2,090	5.2%	4.7%	4.5%
Bangor MSA	50,400	49,900	50,600	48,500	48,100	48,900	1,900	1,800	1,700	3.9	3.7	3.4
Bath-Brunswick	31,870	32,290	34,320	30,720	31,170	33,300	1,150	1,120	1,020	3.6	3.5	3.0
Belfast	14,180	14,240	13,280	13,280	13,490	12,550	910	760	720	6.4	5.3	5.4
Biddeford	35,860	36,320	37,620	34,430	34,970	36,360	1,430	1,350	1,270	4.0	3.7	3.4
Boothbay Harbor	7,720	7,870	8,200	7,350	7,510	7,910	370	360	290	4.8	4.6	3.6
Bucksport	5,060	5,030	5,170	4,720	4,720	4,870	340	310	300	6.7	6.1	5.8
Calais	5,300	5,430	5,350	4,760	4,830	4,830	540	600	520	10.2	11.0	9.7
Dexter-Pittsfield	13,820	14,260	14,080	12,590	12,990	12,820	1,230	1,270	1,260	8.9	8.9	9.0
Dover-Foxcroft	7,250	7,240	7,630	6,720	6,730	7,110	530	520	510	7.3	7.1	6.7
Ellsworth-Bar Harbor	17,400	17,700	16,990	15,930	16,470	15,690	1,470	1,230	1,300	8.5	7.0	7.6
Farmington	17,820	17,750	17,990	16,610	16,420	16,860	1,210	1,330	1,130	6.8	7.5	6.3
Fort Kent	3,700	3,770	3,880	3,290	3,330	3,420	410	440	450	11.1	11.6	11.7
Greenville	1,110	1,090	1,070	970	980	960	140	110	110	12.8	10.2	10.2
Houlton	6,340	6,440	6,360	6,010	6,080	5,960	330	360	400	5.2	5.5	6.2
Jonesport-Milbridge	4,270	4,480	4,110	3,950	4,190	3,820	320	290	290	7.5	6.5	7.1
Kittery-York <sup>5</sup>	20,230	20,120	20,910	19,920	19,840	20,590	310	290	330	1.5	1.4	1.6
Lewiston-Auburn MSA	53,100	53,300	53,200	50,700	50,700	50,800	2,400	2,600	2,300	4.5	4.9	4.4
Lincoln-Howland	5,730	5,770	5,890	5,320	5,350	5,530	410	420	350	7.1	7.3	6.0
Machias-Eastport	6,710	6,980	6,640	6,070	6,330	6,100	640	650	540	9.5	9.3	8.1
Madawaska	4,040	4,120	4,170	3,740	3,820	3,830	300	300	340	7.4	7.3	8.1
Millinocket-East Millinocket	5,210	5,280	5,100	4,750	4,790	4,760	460	490	340	8.8	9.4	6.7
Norway-Paris	11,270	11,480	11,010	10,550	10,730	10,410	720	750	600	6.4	6.6	5.5
Outer Bangor	7,430	7,610	8,040	6,910	7,150	7,550	520	460	500	7.0	6.0	6.2
Patten-Island Falls	1,950	1,980	2,020	1,770	1,790	1,830	180	190	190	9.2	9.4	9.4
Portland MSA	132,700	132,300	135,600	129,600	128,900	132,700	3,200	3,400	2,900	2.4	2.6	2.1
Presque Isle-Caribou	19,600	19,920	19,600	17,830	18,110	17,790	1,780	1,800	1,820	9.1	9.1	9.3
Rockland	24,130	24,350	24,130	23,140	23,440	23,460	1,000	910	670	4.1	3.7	2.8
Rumford	11,010	10,140	10,650	10,320	9,360	10,100	690	780	550	6.3	7.7	5.2
Sanford	22,310	22,440	22,790	21,180	21,230	21,460	1,120	1,220	1,330	5.0	5.4	5.8
Sebago Lakes Region	13,170	13,060	13,030	12,720	12,580	12,620	450	480	420	3.4	3.7	3.2
Skowhegan	16,010	16,160	16,790	14,640	14,820	15,490	1,360	1,350	1,300	8.5	8.3	7.7
Stonington	5,300	5,590	5,460	5,110	5,400	5,280	200	190	170	3.7	3.3	3.2
Van Buren	1,600	1,620	1,630	1,460	1,460	1,470	140	150	170	8.6	9.5	10.2
Waterville	24,050	24,220	25,290	22,430	22,650	23,750	1,620	1,580	1,550	6.7	6.5	6.1
MAINE	654,100	656,500	665,300	622,000	624,500	635,600	32,200	32,000	29,700	4.9	4.9	4.5
UNITED STATES (000)	136,742	136,912	134,583	130,785	130,999	127,903	5,957	5,914	6,680	4.4	4.3	5.0

<sup>1</sup> Civilian labor force, employed, and unemployed estimates are by place of residence. Current month estimates are preliminary; prior month and year-ago estimates are revised. Items may not add due to rounding. All data exclude members of the Armed Forces. MSA stands for Metropolitan Statistical Area.

<sup>2</sup> Total employment includes nonfarm wage and salary workers, agricultural workers, unpaid family workers, domestics, the self employed, and workers involved in labor disputes.

<sup>3</sup> People are classified as unemployed, regardless of their eligibility for unemployment benefits or public assistance, if they meet all of the following: they were not employed during the survey week; they were available for work at that time; and they made specific efforts to find employment some time during the prior four weeks. Persons laid off from their former jobs and awaiting recall and those expecting to report to a job within 30 days need not be looking for work to be counted as unemployed.

<sup>4</sup> The unemployment rate is calculated by dividing the total number of unemployed by the total civilian labor force, and is expressed as a percent.

<sup>5</sup> Kittery-York is the five-town Maine portion of the Portsmouth-Rochester PMSA which includes towns in both Maine and New Hampshire.

Source: Maine Department of Labor, Labor Market Information Services, in cooperation with the U.S. Department of Labor, Bureau of Labor Statistics.



Labor Market Information Services

Digitized by Google

Original from  
CORNELL UNIVERSITY

**Civilian Labor Force, Employed, and Unemployed  
by County, Not Seasonally Adjusted<sup>1</sup>**

AREA	CIVILIAN LABOR FORCE			EMPLOYED			UNEMPLOYED			UNEMPLOYMENT RATE		
	Dec 97	Nov 97	Dec 96	Dec 97	Nov 97	Dec 96	Dec 97	Nov 97	Dec 96	Dec 97	Nov 97	Dec 96
<b>COUNTY</b>												
Androscoggin	59,260	59,510	59,490	56,550	56,590	56,830	2,710	2,920	2,660	4.6%	4.9%	4.5%
Aroostook	36,850	37,450	37,210	33,700	34,200	33,870	3,150	3,250	3,340	8.6	8.7	9.0
Cumberland	139,410	139,100	142,860	135,950	135,450	139,810	3,460	3,650	3,050	2.5	2.6	2.1
Franklin	14,920	14,850	15,060	13,920	13,750	14,120	1,010	1,100	930	6.7	7.4	6.2
Hancock	25,280	25,820	25,190	23,450	24,240	23,530	1,840	1,580	1,660	7.3	6.1	6.6
Kennebec	60,470	60,390	61,750	57,170	57,320	58,740	3,300	3,100	3,010	5.5	5.1	4.9
Knox	21,460	21,650	21,490	20,560	20,840	20,860	900	820	630	4.2	3.8	2.9
Lincoln	15,870	16,040	16,540	15,100	15,330	15,960	770	710	580	4.9	4.4	3.5
Oxford	26,980	26,270	26,320	25,410	24,560	25,030	1,570	1,700	1,290	5.8	6.5	4.9
Penobscot	76,340	76,420	77,460	72,340	72,530	73,710	4,000	3,890	3,760	5.2	5.1	4.8
Piscataquis	8,450	8,430	8,780	7,770	7,790	8,160	680	640	630	8.0	7.6	7.1
Sagadahoc	14,540	14,780	15,700	14,070	14,280	15,250	470	510	450	3.2	3.4	2.9
Somerset	26,080	26,450	27,000	23,870	24,260	25,030	2,210	2,180	1,980	8.5	8.3	7.3
Waldo	19,470	19,490	18,680	18,150	18,360	17,640	1,310	1,130	1,040	6.7	5.8	5.6
Washington	16,590	17,210	16,410	15,090	15,670	15,050	1,500	1,540	1,370	9.0	9.0	8.3
York	92,170	92,650	95,380	88,860	89,290	92,030	3,300	3,360	3,350	3.6	3.6	3.5
<b>MAINE</b>	<b>654,100</b>	<b>656,500</b>	<b>665,300</b>	<b>622,000</b>	<b>624,500</b>	<b>635,600</b>	<b>32,200</b>	<b>32,000</b>	<b>29,700</b>	<b>4.9</b>	<b>4.9</b>	<b>4.5</b>
<b>UNITED STATES (000)</b>	<b>136,742</b>	<b>136,912</b>	<b>134,583</b>	<b>130,785</b>	<b>130,999</b>	<b>127,903</b>	<b>5,957</b>	<b>5,914</b>	<b>6,680</b>	<b>4.4</b>	<b>4.3</b>	<b>5.0</b>

<sup>1</sup> See page 2 for footnotes 1 through 4 and source.

**Area Analyst's Corner**

**Central Area**

Ken Bridges (207) 287-2271

Central Maine Power Co. (CMP), headquartered in Augusta, announced the sale of most of their electrical power generating plants to Florida Power and Light Co. for \$846 million. The sale was a pleasant surprise in that it came much sooner than regulators had allowed for, and was at a substantial premium over the book value of the assets. CMP estimates the cost of restoring power to its customers from the first January ice storm in excess of \$55 million. Governor King is seeking federal resources to help defray these costs.

**Western Area**

Gerard Dennison (207) 783-5314

Lisbon voters approved a 20-year Tax Increment Financing (TIF) agreement with Dingley Press. The TIF will help fund a \$25 million expansion project which will enable the specialty catalog printing manufacturer to expand the plant, as well as purchase a new press and bindery operation. The company employs over 200 people and has more than doubled its employment base since moving to Lisbon in 1989.

**Southern Area**

Eva Smith (207) 822-0216

WestPoint Stevens will be adding a fourth blanket-producing machine to their factory in downtown Biddeford this year. Scheduled to be in place by October, the machine will increase blanket production capacity by 3 million and could add as many as 50 jobs. The expansion, estimated at \$7.5 million, marks the first WestPoint Stevens addition to the Biddeford mill production line since 1985.

**North/East Area**

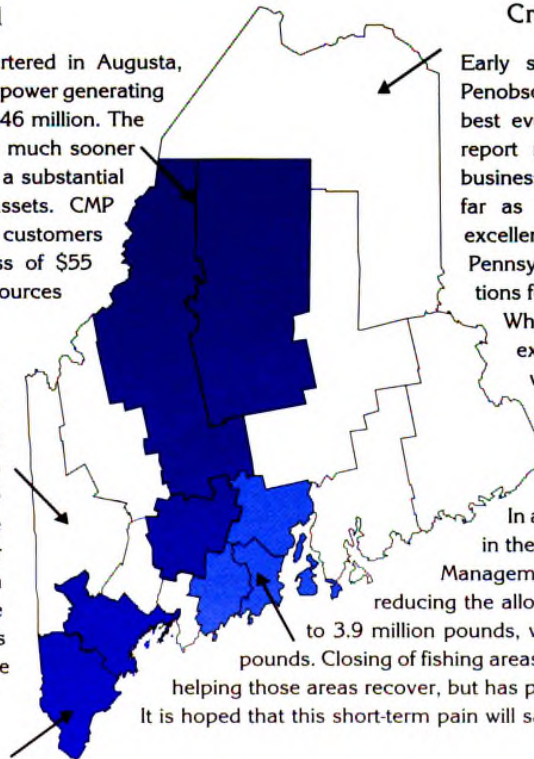
Craig Holland (207) 941-3076

Early snow fell in Aroostook and Northern Penobscot counties making this winter one of the best ever for snowmobiling. Some businesses report more than a 50 percent increase in business. Snowmobilers are coming in from as far as Wisconsin to take advantage of the excellent conditions. The ICT Group of Pennsylvania is taking employment applications for a telemarketing operation in Pittsfield. When fully operational, the facility is expected to employ up to 250 local workers.

**Coastal Area**

Ken Bridges (207) 287-2271

In a drastic move to revive the supply of cod in the Gulf of Maine, the New England Fishery Management Council adopted new regulations reducing the allowable 1998 cod catch from 10.6 million to 3.9 million pounds, with a daily individual catch limit of 700 pounds. Closing of fishing areas in Southern New England appears to be helping those areas recover, but has put additional stress on the Gulf of Maine. It is hoped that this short-term pain will save the industry in the long run.



**Civilian Labor Force, Employed, and Unemployed in Maine, Seasonally Adjusted (in thousands)**

ITEM	1997												1996
	Dec	Nov	Oct	Sep	Aug	Jul	Jun	May	Apr	Mar	Feb	Jan	Dec
Civilian Labor Force	662.3	661.9	667.5	667.1	669.1	668.4	670.0	668.7	669.1	672.6	666.8	667.8	674.7
Employed	628.2	630.1	634.4	635.3	637.3	634.3	637.8	636.3	637.3	643.3	637.9	638.1	643.1
Unemployed	34.0	31.7	33.1	31.8	31.7	34.1	32.1	32.4	31.8	29.4	29.0	29.7	31.6
Unemployment Rate (%)	5.1	4.8	5.0	4.8	4.7	5.1	4.8	4.8	4.7	4.4	4.3	4.4	4.7

<sup>1</sup> See page 2 for footnotes 1 through 4 and source.

**Nonfarm Wage and Salary Employment in Maine, Seasonally Adjusted<sup>1</sup> (in thousands)**

INDUSTRY	1997												1996
	Dec	Nov	Oct	Sep	Aug	Jul	Jun	May	Apr	Mar	Feb	Jan	Dec
Nonfarm Wage and Salary Employment <sup>2</sup>	556.5	555.9	553.0	553.2	551.2	549.8	548.0	546.4	546.3	546.5	545.7	545.2	540.8
Construction	24.7	24.7	24.2	24.4	24.5	24.2	24.0	23.6	23.4	23.7	23.5	23.8	23.6
Manufacturing	88.6	88.1	87.7	88.0	88.3	87.0	87.7	88.0	87.7	87.9	87.7	87.8	87.4
Durable Goods	41.8	41.5	41.5	41.3	41.2	40.8	40.8	41.1	41.2	41.1	41.1	41.0	41.2
Nondurable Goods	46.8	46.6	46.3	46.7	47.1	46.2	46.9	46.9	46.5	46.8	46.6	46.8	46.2
Transportation and Public Utilities	22.6	22.5	22.5	22.8	21.8	22.6	22.5	22.7	22.6	22.6	22.7	22.8	22.5
Wholesale Trade	27.1	27.0	27.1	27.2	27.1	27.0	26.8	26.8	26.6	26.4	26.4	26.2	26.0
Retail Trade	114.0	115.1	113.9	113.1	112.2	112.2	111.3	111.4	111.0	111.3	110.9	110.9	108.1
Finance, Insurance, and Real Estate	28.0	27.7	27.6	27.4	27.5	27.4	26.9	27.1	27.1	27.2	27.2	27.4	27.1
Services	158.0	157.6	156.8	156.5	156.6	156.2	155.3	154.5	154.7	153.9	154.0	152.9	152.4
Government	93.4	93.1	93.1	93.7	93.1	93.1	93.4	92.2	93.1	93.4	93.2	93.3	93.6

<sup>1</sup> See footnotes 1 and 2 on page 6. <sup>2</sup> Mining employment is not suitable for seasonal adjustment because it has very little seasonal and irregular movement. Thus, the not-seasonally-adjusted series is used as a component of the seasonally adjusted total nonfarm wage and salary employment estimate. Source: See page 2.

**December Unemployment Rate Rises to 5.1 Percent**

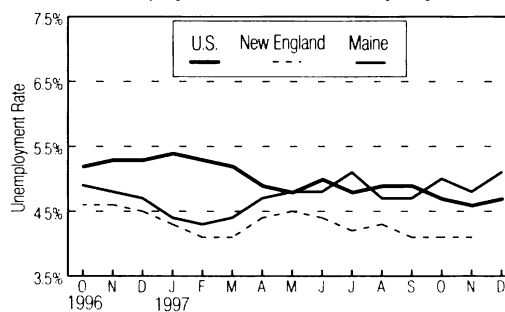
State Labor Commissioner Valerie Landry announced that Maine's seasonally-adjusted unemployment rate rose to 5.1 percent in December from 4.8 percent in November.

"Seasonally-adjusted unemployment increased slightly between November and December due to a modest decline in employment," said Commissioner Landry. "A gain of 600 nonfarm wage and salary jobs was more than offset by a decline in self employment."

During most of 1997 the seasonally-adjusted unemployment rate has fluctuated between 4.7 percent and 5.1 percent. While unemployment remained at relatively low levels, nonfarm wage and salary employment recorded steady gains, rising from 545,200 in January to 556,500 in December. Most of the major industries recorded employment increases, with the most significant gains registered by retail trade and services.

Other New England states which have reported their seasonally-adjusted unemployment rates for December include New Hampshire, 2.7 percent; Massachusetts, 3.8 percent; Vermont, 3.8 percent;

Unemployment Rates, Seasonally Adjusted



and Rhode Island, 4.7 percent. The adjusted national rate for December was 4.4 percent.

Maine's not-seasonally-adjusted unemployment rate was 4.9 percent in December, unchanged from November and up from 4.5 percent in December 1997. The unadjusted national rate was 4.4 percent in December, up from 4.3 percent in November and down from 5.0 percent in December 1996. Not-seasonally-adjusted unemployment rates in Maine counties ranged from 2.5 percent in Cumberland County to 9.0 percent in Washington County.

Not-seasonally-adjusted nonfarm wage and salary jobs fell by 2,400 from November to December.



**Selected Regular Unemployment Compensation Program Indicators**

Key Data	Dec 1997	Nov 1997	Dec 1996
Average Duration	16.7	16.5	14.2
Average Weekly Benefit Amount*	\$143.97	\$141.57	\$169.89
Exhaustees	2,505	1,117	1,093

\* For totally unemployed claimants, excluding dependency allowances.

**Weekly Initial Claims**

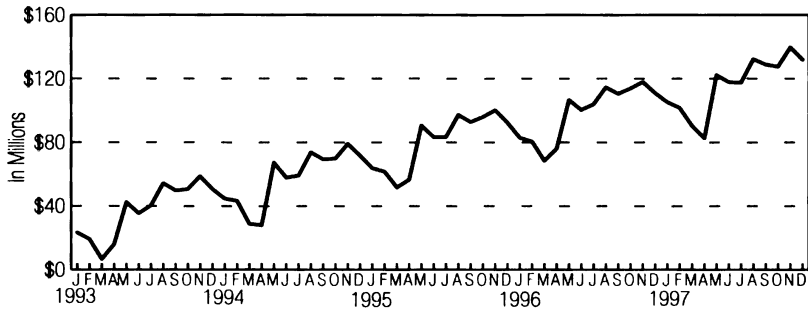
Week	1/17	1/10	1/3	12/27	12/20	12/13	12/6
1998	2,306	2,567	2,295	1,988	2,005	2,070	2,233
Week	1/18	1/11	1/4	12/28	12/21	12/14	12/7
1997	2,716	5,318	3,362	2,174	2,286	2,511	2,850

**Continued Claims Less Partial\***

Dec 1997	Nov 1997	Dec 1996
10,060	7,919	11,327

\* For the week including the 12<sup>th</sup> of the month.

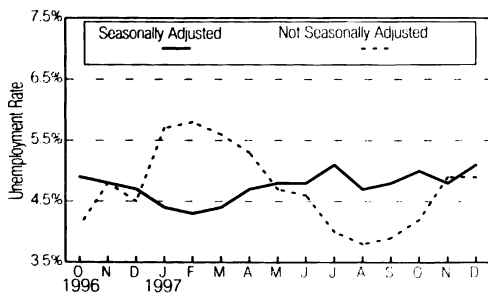
Monthly Unemployment Insurance Trust Fund Balance



Construction, eating and drinking places, lodging services, and local government recorded seasonal losses.

Over the year, not-seasonally-adjusted nonfarm wage and salary employment increased by 15,700. All major industry divisions except government added jobs. Retail trade increased by 5,800, with the most significant gain in miscellaneous retail. Services added 5,600, largely in social services and business services.

Unemployment Rates for Maine

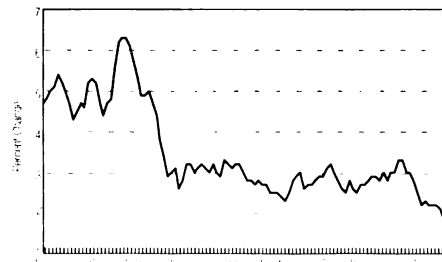


**U.S. Consumer Price Index for all urban consumers (CPI-U)**

Item	Dec 97	Nov 97	Dec 96	Dec 96
(1982-1984 = 100) All Items	161.3	161.5	158.6	158.6

Percent Change from Prior Month	-0.1%
Percent Change from 12 Months Ago	+1.7%
Percent change from Last December	+1.7%

Over-the-Year Change in CPI-U



## Nonfarm Wage and Salary Employment, Not Seasonally Adjusted (in thousands)

INDUSTRY	MAINE			PORTLAND MSA			LEWISTON-AUBURN MSA		
	Dec 97	Nov 97	Dec 96	Dec 97	Nov 97	Dec 96	Dec 97	Nov 97	Dec 96
<b>Nonfarm Wage and Salary Employment<sup>1</sup></b>	<b>561.2</b>	<b>563.6</b>	<b>545.5</b>	<b>142.7</b>	<b>142.6</b>	<b>141.4</b>	<b>43.3</b>	<b>43.6</b>	<b>41.9</b>
<b>Goods Producing</b>	<b>114.3</b>	<b>115.8</b>	<b>111.9</b>	<b>21.8</b>	<b>21.6</b>	<b>20.8</b>	<b>9.6</b>	<b>9.7</b>	<b>9.4</b>
<b>Mining</b>	<b>0.1</b>	<b>0.1</b>	<b>0.1</b>	*	*	*	*	*	*
<b>Construction</b>	<b>24.7</b>	<b>26.2</b>	<b>23.6</b>	<b>6.4</b>	<b>6.5</b>	<b>6.5</b>	<b>1.8</b>	<b>1.9</b>	<b>1.6</b>
Building Construction	6.1	6.2	5.8	1.2	1.2	1.2	.	.	.
Heavy Construction	3.6	4.5	3.9	.	.	.	.	.	.
Special Trade Contractors	15.0	15.5	13.9	4.7	4.7	4.7	.	.	.
<b>Manufacturing</b>	<b>89.5</b>	<b>89.5</b>	<b>88.2</b>	<b>15.4</b>	<b>15.1</b>	<b>14.3</b>	<b>7.8</b>	<b>7.8</b>	<b>7.8</b>
Durable Goods	42.7	42.6	42.1	7.5	7.3	6.6	2.2	2.2	2.4
Lumber and Wood Products	10.8	10.8	10.7	.	.	.	.	.	.
Primary and Fabricated Metals	3.5	3.5	3.8	.	.	.	.	.	.
Industrial Machinery and Equipment	4.5	4.4	4.3	1.5	1.5	1.3	.	.	.
Electronic and Other Electrical Equipment	8.0	7.8	7.1	2.8	2.7	2.4	.	.	.
Transportation Equipment	10.6	10.6	10.9	.	.	.	.	.	.
Other Durable Goods	5.3	5.5	5.3	3.2	3.1	2.9	.	.	.
Nondurable Goods	46.8	46.9	46.1	7.9	7.8	7.7	5.6	5.6	5.4
Food and Kindred Products	6.7	6.6	6.6	2.2	2.1	2.2	.	.	.
Textile Mill Products	4.9	4.9	4.8	.	.	.	.	.	.
Apparel and Other Textile Products	1.9	2.0	1.8	.	.	.	.	.	.
Paper and Allied Products	14.7	14.4	14.7	.	.	.	.	.	.
Printing and Publishing	5.7	5.7	5.6	1.7	1.7	1.6	.	.	.
Rubber and Misc. Plastic Products	3.1	3.1	3.0	.	.	.	.	.	.
Leather and Leather Products	7.9	8.1	7.8	1.2	1.2	1.1	1.0	1.0	1.1
Other Nondurable Goods	1.9	2.1	1.8	2.8	2.8	2.8	4.6	4.6	4.3
<b>Service Producing</b>	<b>446.9</b>	<b>447.8</b>	<b>433.6</b>	<b>120.9</b>	<b>121.0</b>	<b>120.6</b>	<b>33.7</b>	<b>33.9</b>	<b>32.5</b>
<b>Transportation and Public Utilities</b>	<b>22.8</b>	<b>22.7</b>	<b>22.7</b>	<b>6.3</b>	<b>6.3</b>	<b>6.2</b>	<b>2.0</b>	<b>2.0</b>	<b>1.8</b>
<b>Wholesale Trade</b>	<b>27.2</b>	<b>27.0</b>	<b>26.1</b>	<b>9.9</b>	<b>9.8</b>	<b>9.8</b>	<b>2.2</b>	<b>2.2</b>	<b>2.2</b>
<b>Retail Trade</b>	<b>115.7</b>	<b>116.9</b>	<b>109.9</b>	<b>33.7</b>	<b>33.8</b>	<b>32.9</b>	<b>9.3</b>	<b>9.3</b>	<b>8.9</b>
General Merchandise Stores	13.0	13.2	12.5	.	.	.	.	.	.
Food Stores	19.9	19.9	19.0	.	.	.	.	.	.
Automotive Sales and Services	12.9	12.9	12.6	.	.	.	.	.	.
Eating and Drinking Places	32.1	33.2	31.2	7.9	7.9	8.2	.	.	.
Other Retail Trade	37.8	37.7	34.6	.	.	.	.	.	.
<b>Finance, Insurance, and Real Estate</b>	<b>27.9</b>	<b>27.5</b>	<b>27.0</b>	<b>12.7</b>	<b>12.6</b>	<b>12.5</b>	<b>2.1</b>	<b>2.1</b>	<b>2.0</b>
Banking	8.5	8.4	8.2	.	.	.	.	.	.
Insurance Carriers, Brokers and Agents	11.7	11.6	11.5	.	.	.	.	.	.
Other Finance, Insurance, and Real Estate	7.7	7.5	7.3	.	.	.	.	.	.
<b>Services</b>	<b>156.0</b>	<b>155.7</b>	<b>150.4</b>	<b>39.9</b>	<b>40.1</b>	<b>40.5</b>	<b>13.2</b>	<b>13.4</b>	<b>12.7</b>
Hotels and Other Lodging Places	7.5	8.0	7.0	.	.	.	.	.	.
Business Services	21.7	21.6	20.1	.	.	.	.	.	.
Health Services	51.8	51.5	51.3	.	.	.	.	.	.
Educational Services	13.5	13.6	13.1	.	.	.	.	.	.
Social Services	20.8	20.6	18.2	.	.	.	.	.	.
Other Services	40.7	40.4	40.7	.	.	.	.	.	.
<b>Government</b>	<b>97.3</b>	<b>98.0</b>	<b>97.5</b>	<b>18.4</b>	<b>18.4</b>	<b>18.7</b>	<b>4.9</b>	<b>4.9</b>	<b>4.9</b>
Federal	13.0	12.8	13.1	2.2	2.2	2.3	0.3	0.3	0.3
State	26.3	26.6	26.5	5.0	5.0	4.8	0.7	0.7	0.7
Local <sup>2</sup>	58.0	58.6	57.9	11.2	11.2	11.6	3.9	3.9	3.9

<sup>1</sup> Nonfarm wage and salary employment estimates include all full- and part-time wage and salary workers who worked during or received pay for the pay period which includes the 12th of the month. Domestic workers in private households, proprietors, the self-employed, and unpaid family workers are excluded. Estimates measure the number of jobs by industry. Current month's estimates are preliminary; prior month and year-ago estimates are revised. These estimates are benchmarked to March 1995. As a measure of reliability, the March 1995 benchmark revision for total nonfarm wage and salary employment was .04 percent lower than the original sample-based estimate.

<sup>2</sup> Regular teachers are included in summer months whether or not specifically paid in those months.

\* Where an employment estimate is not entered, either the data is not available in sufficient detail for publication or is nondisclosable by law.

Source: See page 2.



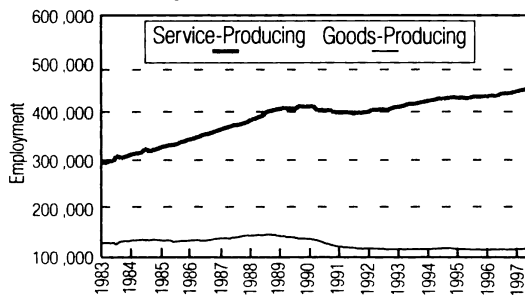
### Earnings and Hours of Production Workers in Manufacturing Industries<sup>1</sup> Not Seasonally Adjusted

AREA AND INDUSTRY	AVERAGE WEEKLY EARNINGS			AVERAGE WEEKLY HOURS			AVERAGE HOURLY EARNINGS			ANNUAL AVERAGE HOURLY EARNINGS		
	Dec 97	Nov 97	Dec 96	Dec 97	Nov 97	Dec 96	Dec 97	Nov 97	Dec 96	1996	1995	1994
<b>STATEWIDE</b>												
<b>Manufacturing</b>	<b>\$549.12</b>	<b>\$533.08</b>	<b>\$540.27</b>	<b>41.6</b>	<b>40.6</b>	<b>41.4</b>	<b>\$13.20</b>	<b>\$13.13</b>	<b>\$13.05</b>	<b>\$12.71</b>	<b>\$12.42</b>	<b>\$11.88</b>
<b>Durable Goods</b>	<b>532.95</b>	<b>507.42</b>	<b>515.43</b>	<b>41.8</b>	<b>40.4</b>	<b>41.5</b>	<b>12.75</b>	<b>12.56</b>	<b>12.42</b>	<b>12.23</b>	<b>12.22</b>	<b>11.80</b>
Lumber and Wood Products	440.96	436.90	447.12	42.4	42.5	43.2	10.40	10.28	10.35	10.10	9.80	9.46
Primary and Fabricated Metals	492.99	468.86	460.88	42.1	41.2	39.8	11.71	11.38	11.58	11.31	11.07	11.04
Industrial Machinery and Equipment	692.63	678.30	643.11	45.9	45.1	44.2	15.09	15.04	14.55	14.17	13.67	13.88
Electronic and Other Electric Equipment	430.16	401.10	427.96	37.8	36.2	38.8	11.38	11.08	11.03	10.94	10.76	10.72
Transportation Equipment	720.71	655.92	660.43	43.6	39.3	42.2	16.53	16.69	15.65	15.49	16.43	15.17
Other Durable Goods	394.52	408.03	391.26	39.1	40.6	38.7	10.09	10.05	10.11	10.08	9.67	9.34
<b>Nondurable Goods</b>	<b>565.65</b>	<b>556.78</b>	<b>561.56</b>	<b>41.5</b>	<b>40.7</b>	<b>41.2</b>	<b>13.63</b>	<b>13.68</b>	<b>13.65</b>	<b>13.17</b>	<b>12.61</b>	<b>11.95</b>
Food and Kindred Products	388.47	360.99	369.38	38.5	36.5	36.5	10.09	9.89	10.12	10.00	9.75	9.54
Textile Mill Products	465.39	460.75	457.46	47.2	46.4	44.5	9.86	9.93	10.28	10.27	10.17	9.38
Apparel and Other Textile Products	389.82	416.07	328.49	39.9	41.9	35.9	9.77	9.93	9.15	9.00	8.32	8.08
Paper and Allied Products	880.45	870.01	874.42	44.4	42.9	44.5	19.83	20.28	19.65	18.84	18.22	17.03
Leather and Leather Products	352.41	345.08	348.38	39.2	38.6	39.1	8.99	8.94	8.91	8.71	8.54	8.30
Other Nondurable Goods	447.93	456.96	450.60	37.8	38.4	39.7	11.85	11.90	11.35	11.20	10.88	10.62
<b>PORTLAND MSA</b>												
<b>Manufacturing</b>	<b>441.90</b>	<b>424.48</b>	<b>438.70</b>	<b>38.9</b>	<b>37.9</b>	<b>39.1</b>	<b>11.36</b>	<b>11.20</b>	<b>11.22</b>	<b>11.22</b>	<b>11.02</b>	<b>10.78</b>
<b>LEWISTON-AUBURN MSA</b>												
<b>Manufacturing</b>	<b>485.06</b>	<b>496.17</b>	<b>473.10</b>	<b>42.4</b>	<b>42.7</b>	<b>41.5</b>	<b>11.44</b>	<b>11.62</b>	<b>11.40</b>	<b>11.13</b>	<b>10.11</b>	<b>9.76</b>

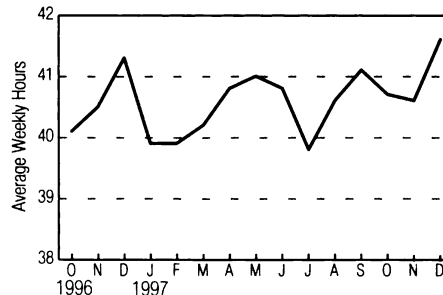
<sup>1</sup> Hours worked and earnings data are computed based on payroll figures for the week including the 12th of the month for manufacturing production workers. Average hourly earnings are calculated on a gross basis, and include such factors as premium pay for overtime and shift differential, as well as changes in basic hourly and incentive rates of pay. Average weekly earnings are the product of weekly hours worked and hourly earnings.

Source: See page 2.

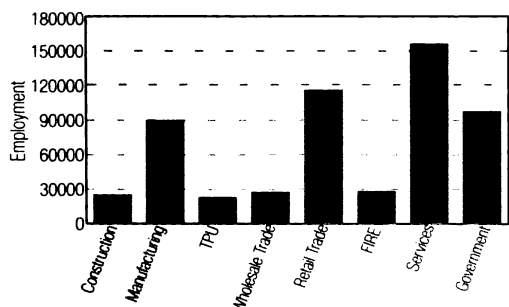
Nonfarm Employment by Sector  
January 1983-December 1997, Maine<sup>1</sup>



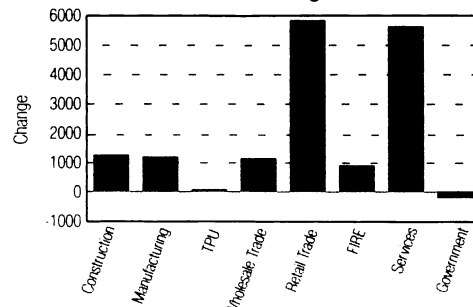
Hours Worked by Manufacturing  
Production Workers, Maine<sup>2</sup>



Nonfarm Employment by Industry Division  
Maine, December 1997<sup>2</sup>



Nonfarm Employment by Industry Division  
Maine, Over-the-Year Change, December 1997<sup>2</sup>



<sup>1</sup> Seasonally Adjusted. <sup>2</sup> Not Seasonally Adjusted.



### Covered Private Employers and Employment by Establishment Size in Maine March 1989-1997

Number of Employers									
Size	1989	1990	1991	1992	1993	1994	1995	1996	1997
0 to 4	19,648	20,619	21,176	21,214	21,574	22,039	22,144	22,363	24,039
5 to 9	6,308	6,511	6,298	6,322	5,328	6,656	6,692	6,892	6,772
10 to 19	3,898	3,959	3,864	3,767	3,934	4,076	4,190	4,225	4,226
20 to 99	3,240	3,157	2,943	2,911	3,025	3,079	3,175	3,196	3,259
100 to 499	521	516	456	445	471	517	529	573	572
500+	65	61	57	59	57	56	60	57	61
<b>Total</b>	<b>33,680</b>	<b>34,833</b>	<b>34,794</b>	<b>34,718</b>	<b>34,389</b>	<b>36,423</b>	<b>36,790</b>	<b>37,306</b>	<b>38,929</b>

Number of People Employed									
Size	1989	1990	1991	1992	1993	1994	1995	1996	1997
0-4	32,337	33,605	33,417	33,334	32,075	32,854	32,887	33,221	32,504
5 to 9	41,629	43,003	41,643	41,724	41,818	44,026	44,151	45,493	44,906
10 to 19	52,465	53,027	51,716	50,104	52,636	54,483	55,949	56,628	56,730
20 to 199	129,592	123,749	115,622	113,680	118,290	120,308	126,706	128,398	129,944
100 to 499	95,843	95,933	85,717	82,859	86,219	94,033	96,290	96,209	102,775
500+	72,040	72,571	65,847	64,120	60,944	59,870	62,238	59,819	61,680
<b>Total</b>	<b>423,906</b>	<b>421,888</b>	<b>393,962</b>	<b>385,821</b>	<b>391,982</b>	<b>405,574</b>	<b>418,221</b>	<b>419,575</b>	<b>428,539</b>

Note: Data for private establishments covered under the Maine Employment Security Law.

See related graphs on page 1.

If you do **NOT** desire to continue receiving this publication, check here  and return this cover to the address below.

If your address has changed, please indicate change and return this cover to the address below.

**Maine Department of Labor**  
Labor Market Information Services  
20 Union Street  
Augusta, Maine 04330-6826

**PRESORTED FIRST CLASS MAIL**  
**POSTAGE PAID**  
**US DEPT. OF LABOR**  
**PERMIT NO. G-12**

93000023

MARTIN P. CATHERWOOD LIBRARY  
INDUS. & LABOR RELATIONS SCHOOL  
ITHACA, NY 14853-3901