

**Initial and Continued Claims by Program for Week Ending: 04/23/2016**

Program		Current Week Claims	Last Week			Last Year		
			Claims	Net Change	% Change	Claims	Net Change	% Change
Regular	Initial:	895	1,030	▼ -135	-13.1	1,101	▼ -206	-18.7
	Continued:	9,383	10,141	▼ -758	-7.5	11,240	▼ -1,857	-16.5
Workshare	Initial:	0	0	— 0	0.0	0	— 0	0.0
	Continued:	4	0	▲ 4	0.0	0	▲ 4	0.0
Dislocated Worker Benefits	Initial:	9	13	▼ -4	-30.8	12	▼ -3	-25.0
	Continued:	167	140	▲ 27	19.3	157	▲ 10	6.4
Trade Readjustment Allowance	Initial:	1	4	▼ -3	-75.0	15	▼ -14	-93.3
	Continued:	159	169	▼ -10	-5.9	189	▼ -30	-15.9
Unemployment Compensation for Federal Employees & Military	Initial:	0	2	▼ -2	-100.0	2	▼ -2	-100.0
	Continued:	75	77	▼ -2	-2.6	92	▼ -17	-18.5
TOTAL ALL PROGRAMS	Initial:	905	1,049	▼ -144	-13.7	1,130	▼ -225	-19.9
	Continued:	9,788	10,527	▼ -739	-7.0	11,678	▼ -1,890	-16.2

**Note:** Initial claims decreased due to fewer layoffs in Agriculture & Forestry & Fishing & Hunting, and Construction, and Administrative & Support & Waste Management & Remediation Services industries. For DWB and TRA programs, initial and continued claims are due to claimants in approved training exhausting Regular Benefits.

**UNEMPLOYMENT INSURANCE FINANCIAL DATA FOR WEEK ENDING**

**04/02/2016**

Regular Unemployment Insurance Benefits for Week	\$	2,672,509.13
Dislocated Workers Benefits Amount Paid for Week	\$	53,070.00
Trade Readjustment Allowance Benefits Amount Paid for Week	\$	80,586.43
Federal Programs Benefits Amount Paid for Week	\$	43,377.47
Net Amount of UI Contributions for Week	\$	14,127.18
Balance Available for UI Benefits as of Week Ending	\$	335,699,315.96
Net Benefits Paid Chargeable to Unemployment Compensation Fund for March 2016	\$	12,997,963.82

**Note:** Regular Benefits paid include reimbursable payments and other disbursements which are reported under the UI Program. Amount Paid may represent Continued Claims tallied in a prior week.

**Extended Benefits Triggers On when the 13-Week Average Insured Unemployment Rate (IUR) reaches 5% and the IUR is 120% or higher than the last 2 years.**

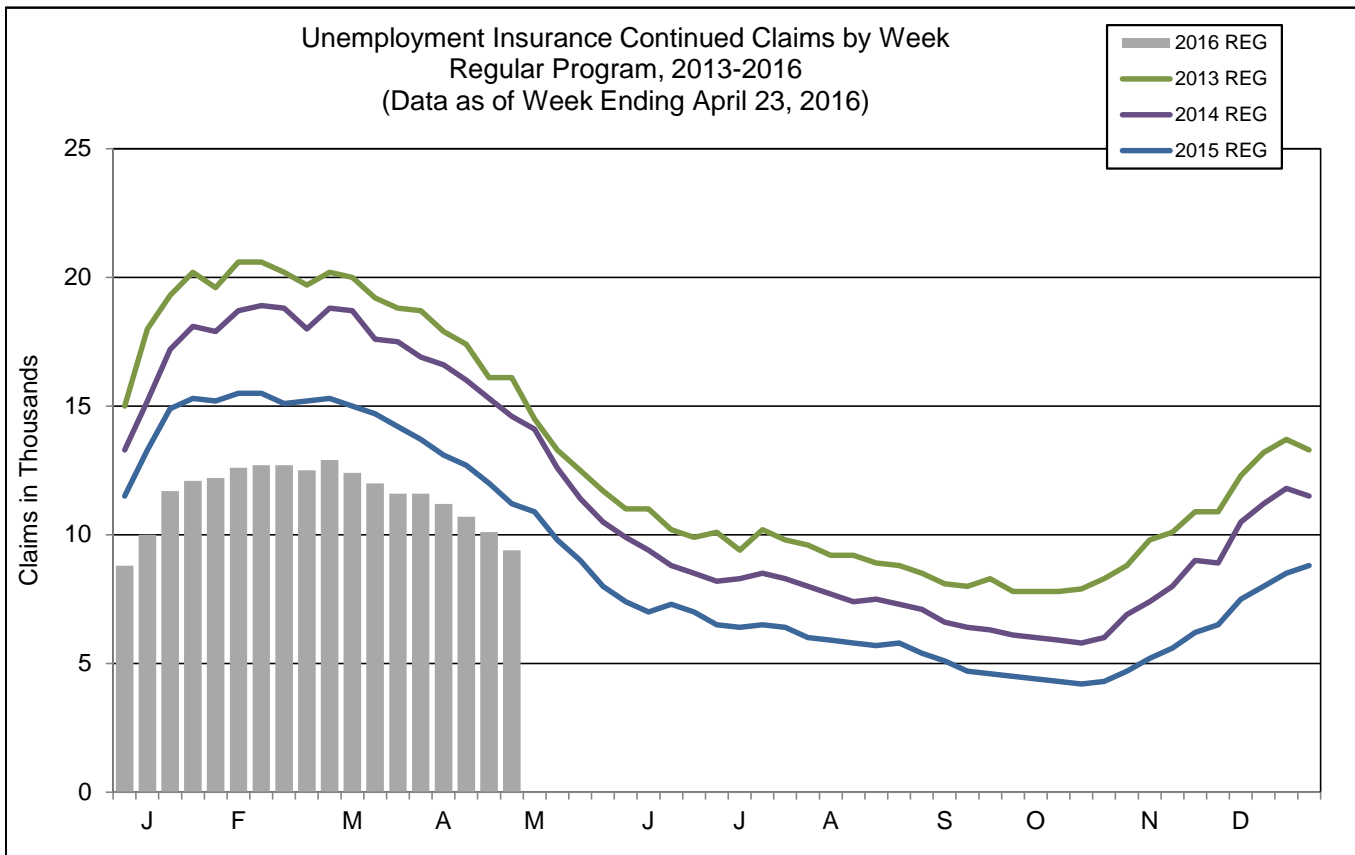
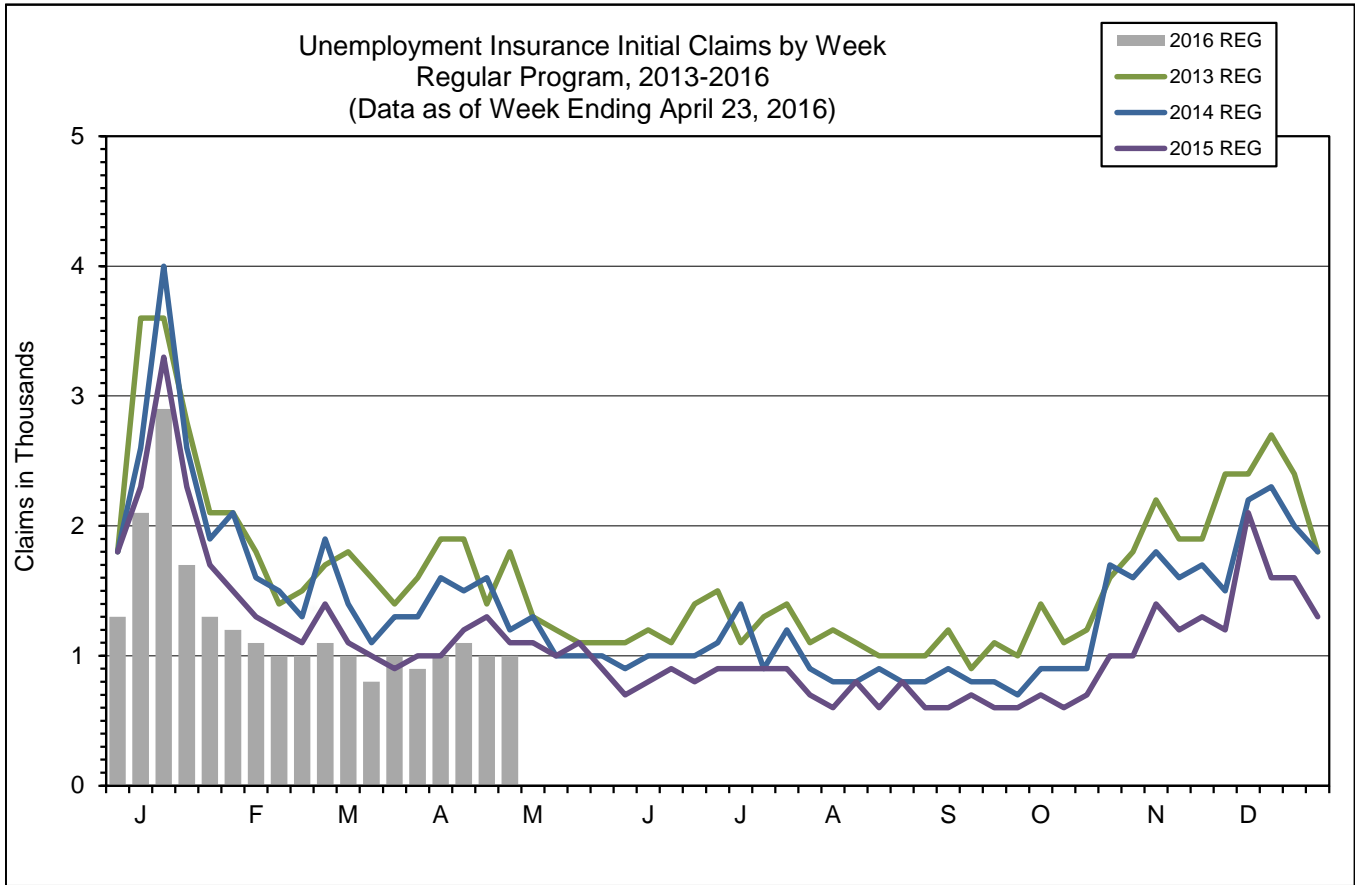
13-Week Average Insured Unemployment Week Ending 04/16/2016	2.02%
120% Threshold - Current IUR as a percent of the average IUR rate in the prior 2 years.	73.58%

IUR is calculated by taking the average of the Continued Claims claims over a rolling 13 week period divided by Covered Employment. Covered Employment is employment that falls under the Unemployment Insurance Program.

**Mass Layoff Statistics**

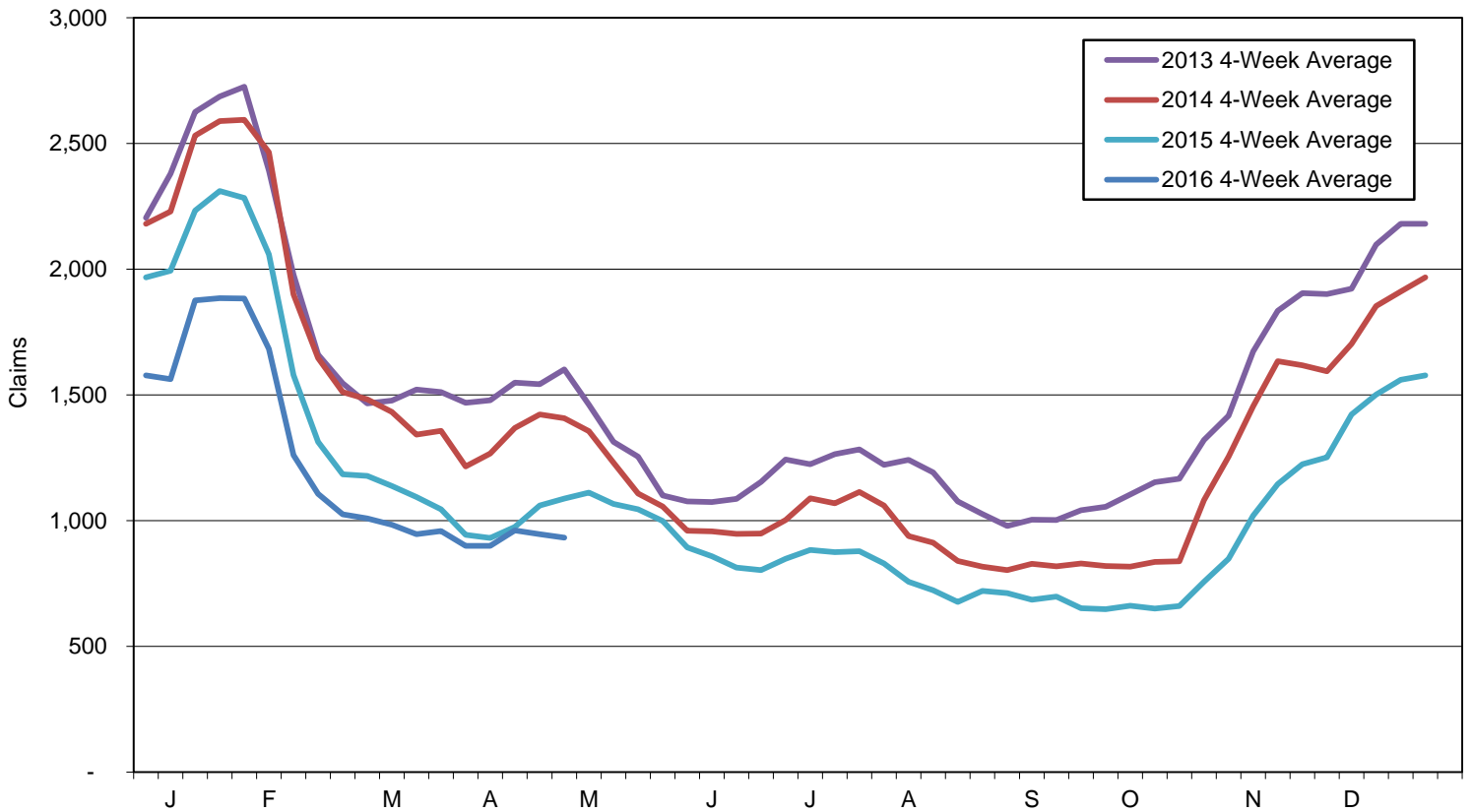
**April 23, 2016**

Year to Date	Number of Unique Employers	Number of Times Employers had 5 or more Initial Claims	Number of Initial Claims
2016	204	466	5,143
2015	204	474	5,091
Percent Change	— 0.0%	▼ -1.7%	▲ 1.0%

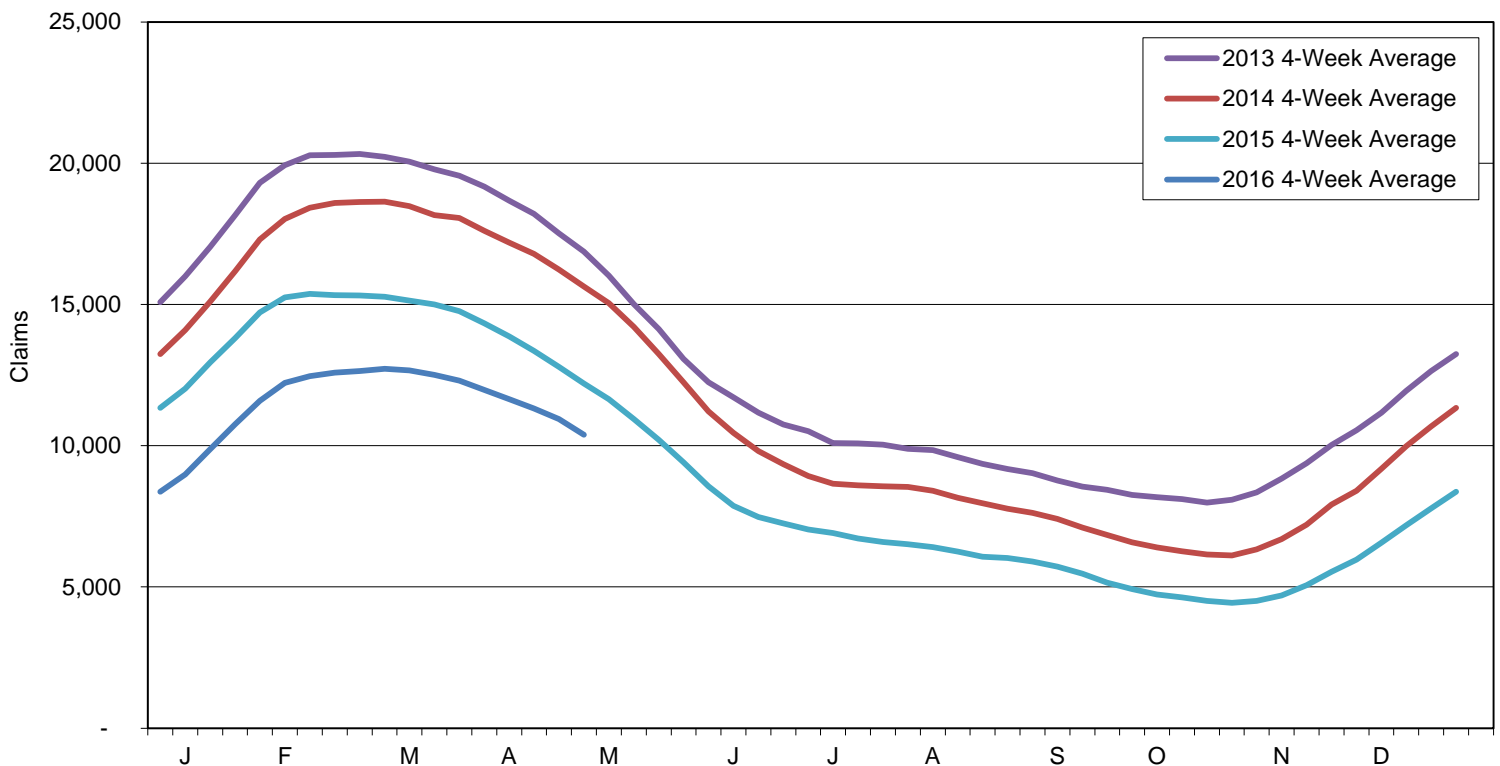


Note: Charts do not include data from Dislocated Worker Benefits, Trade Readjustment Allowance, and Unemployment Compensation for Federal Employees & Military programs due to their small numbers.

Initial Claims for Unemployment Compensation in Maine  
4-Week Moving Averages for Regular Program



Continued Claims for Unemployment Compensation in Maine  
4-Week Moving Averages for Regular Program



Note: Charts do not include data from Dislocated Worker Benefits, Trade Readjustment Allowance, and Unemployment Compensation for Federal Employees & Military programs due to their small numbers.