

**Initial and Continued Claims by Program for Week Ending: 04/02/2016**

Program		Current Week Claims	Last Week			Last Year		
			Claims	Net Change	% Change	Claims	Net Change	% Change
Regular	Initial:	1,003	904	▲ 99	11.0	1,030	▼ -27	-2.6
	Continued:	11,167	11,607	▼ -440	-3.8	13,132	▼ -1,965	-15.0
Workshare	Initial:	0	0	— 0	0.0	0	— 0	0.0
	Continued:	0	6	▼ -6	-100.0	0	— 0	0.0
Dislocated Worker Benefits	Initial:	9	13	▼ -4	-30.8	7	▲ 2	28.6
	Continued:	165	136	▲ 29	21.3	159	▲ 6	3.8
Trade Readjustment Allowance	Initial:	0	0	— 0	0.0	4	▼ -4	-100.0
	Continued:	162	179	▼ -17	-9.5	186	▼ -24	-12.9
Unemployment Compensation for Federal Employees & Military	Initial:	3	1	▲ 2	200.0	1	▲ 2	200.0
	Continued:	89	92	▼ -3	-3.3	111	▼ -22	-19.8
<b>TOTAL ALL PROGRAMS</b>	Initial:	<b>1,015</b>	<b>918</b>	<b>▲ 97</b>	<b>10.6</b>	<b>1,042</b>	<b>▼ -27</b>	<b>-2.6</b>
	Continued:	<b>11,583</b>	<b>12,020</b>	<b>▼ -437</b>	<b>-3.6</b>	<b>13,588</b>	<b>▼ -2,005</b>	<b>-14.8</b>

**Note:** Initial claims increased due to more layoffs in Agriculture, Forestry, Fishing & Hunting and Construction industries. For DWB and TRA programs, initial and continued claims are due to claimants in approved training exhausting Regular Benefits.

**UNEMPLOYMENT INSURANCE FINANCIAL DATA FOR WEEK ENDING**

**03/12/2016**

Regular Unemployment Insurance Benefits for Week	\$	3,390,140.98
Dislocated Workers Benefits Amount Paid for Week	\$	45,080.00
Trade Readjustment Allowance Benefits Amount Paid for Week	\$	100,810.96
Federal Programs Benefits Amount Paid for Week	\$	34,319.26
Net Amount of UI Contributions for Week	\$	36,979.85
Balance Available for UI Benefits as of Week Ending	\$	342,188,591.07
Net Benefits Paid Chargeable to Unemployment Compensation Fund for February 2016	\$	15,993,158.65

**Note:** Regular Benefits paid include reimbursable payments and other disbursements which are reported under the UI Program. Amount Paid may represent Continued Claims tallied in a prior week.

**Extended Benefits Triggers On when the 13-Week Average Insured Unemployment Rate (IUR) reaches 5% and the IUR is 120% or higher than the last 2 years.**

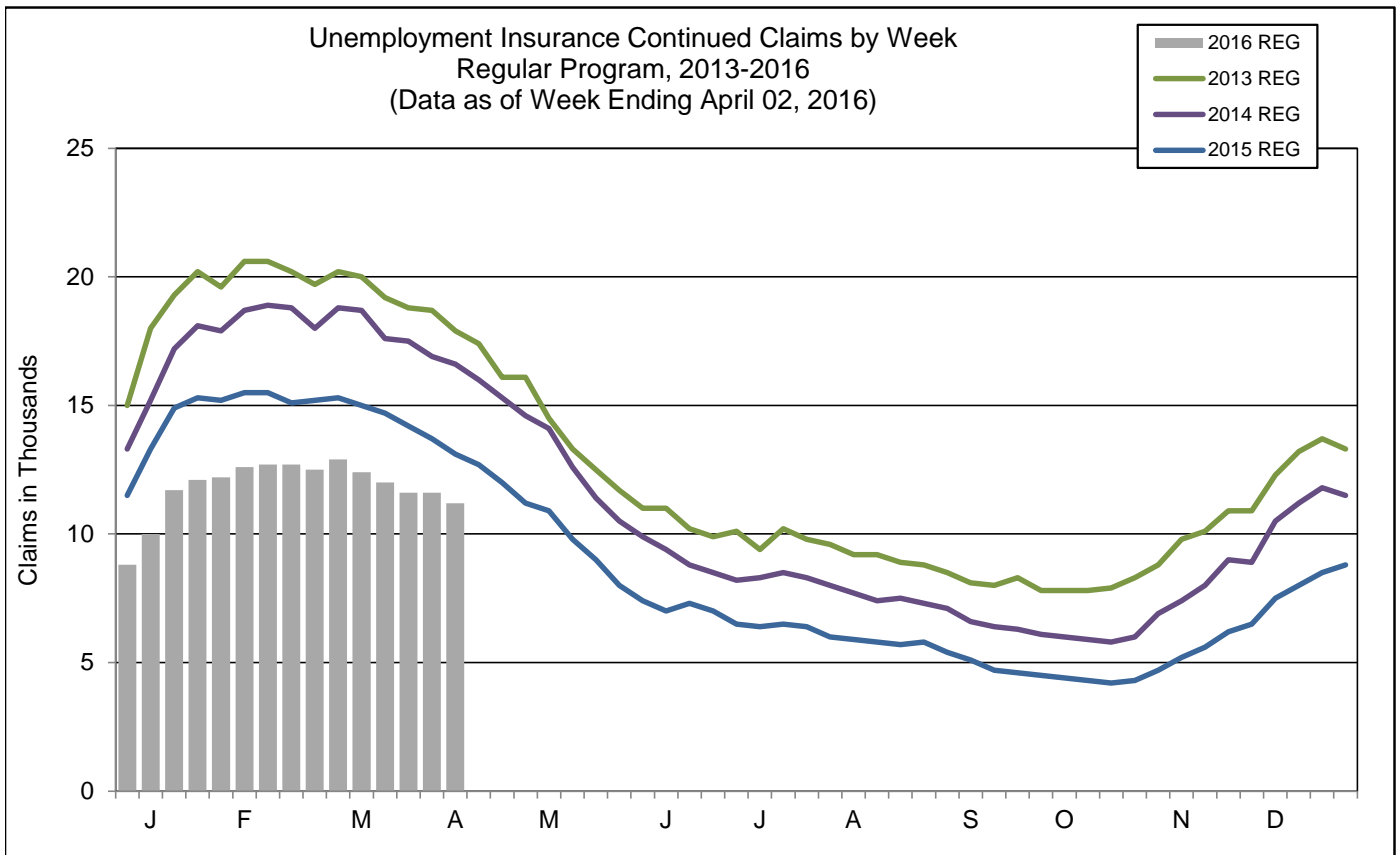
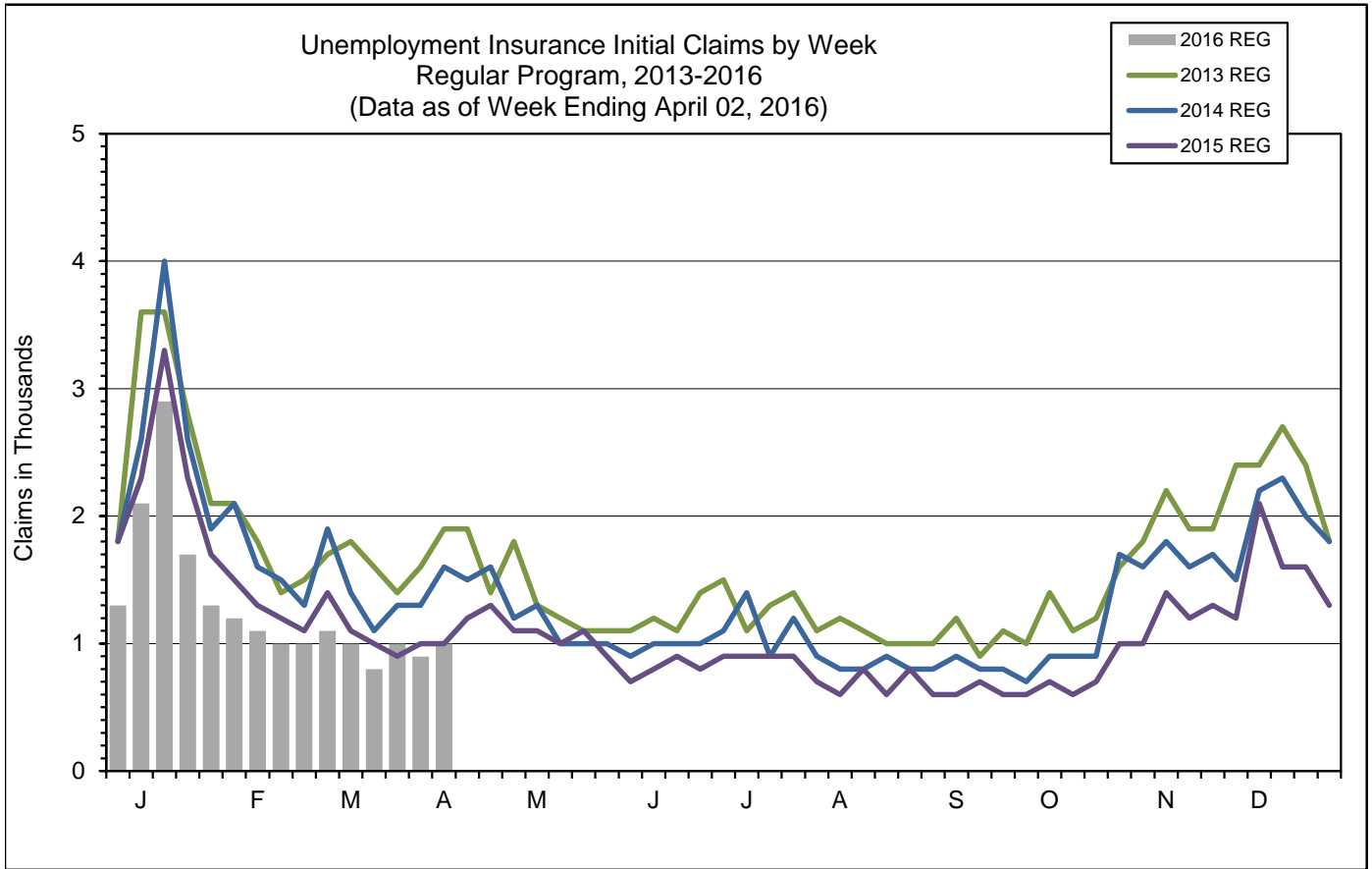
13-Week Average Insured Unemployment Week Ending 03/26/2016	2.11%
120% Threshold - Current IUR as a percent of the average IUR rate in the prior 2 years.	73.77%

IUR is calculated by taking the average of the Continued Claims claims over a rolling 13 week period divided by Covered Employment. Covered Employment is employment that falls under the Unemployment Insurance Program.

**Mass Layoff Statistics**

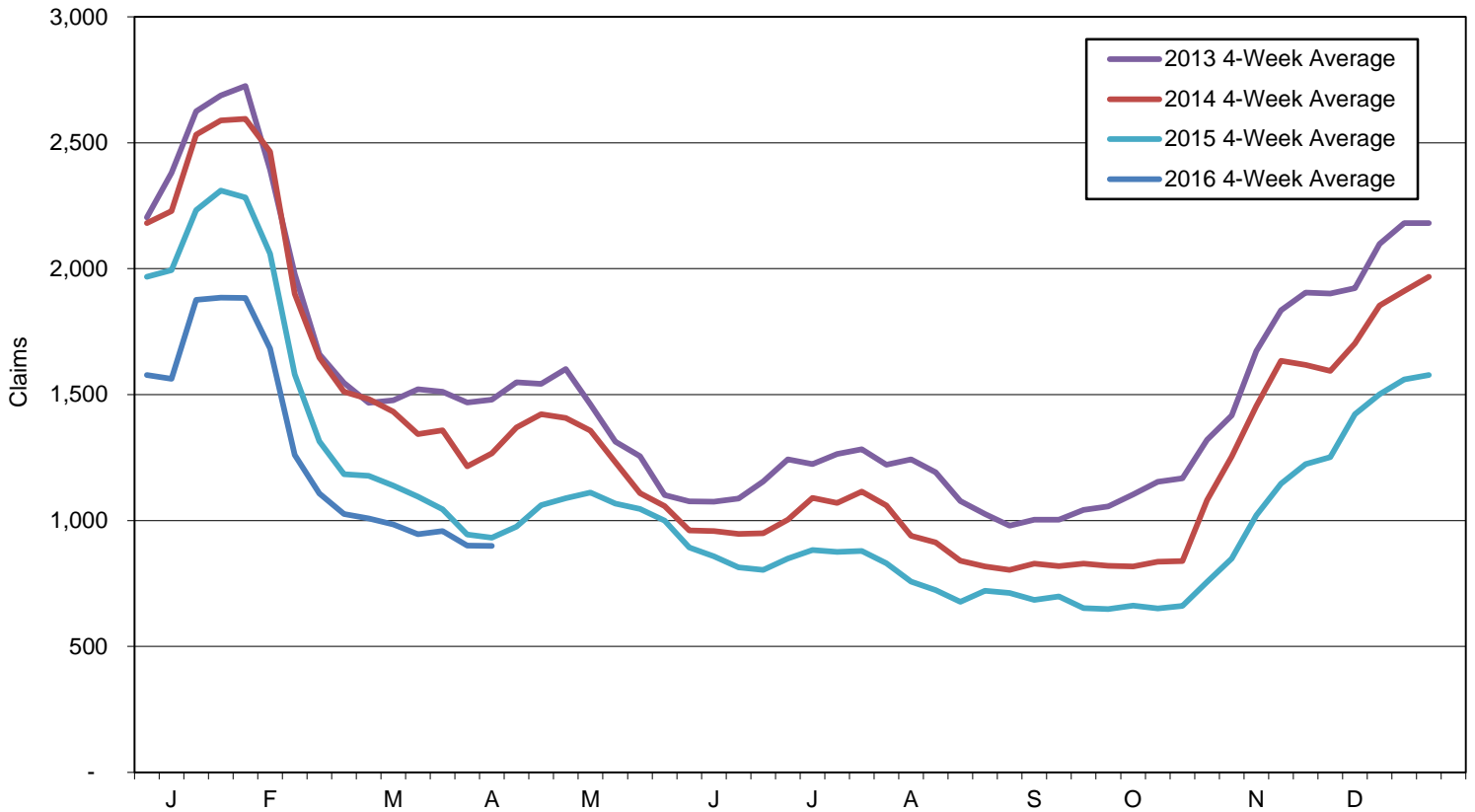
**April 2, 2016**

Year to Date	Number of Unique Employers	Number of Times Employers had 5 or more Initial Claims	Number of Initial Claims
2016	186	392	4,349
2015	173	390	4,256
Percent Change	▲ 7.5%	▲ 0.5%	▲ 2.2%

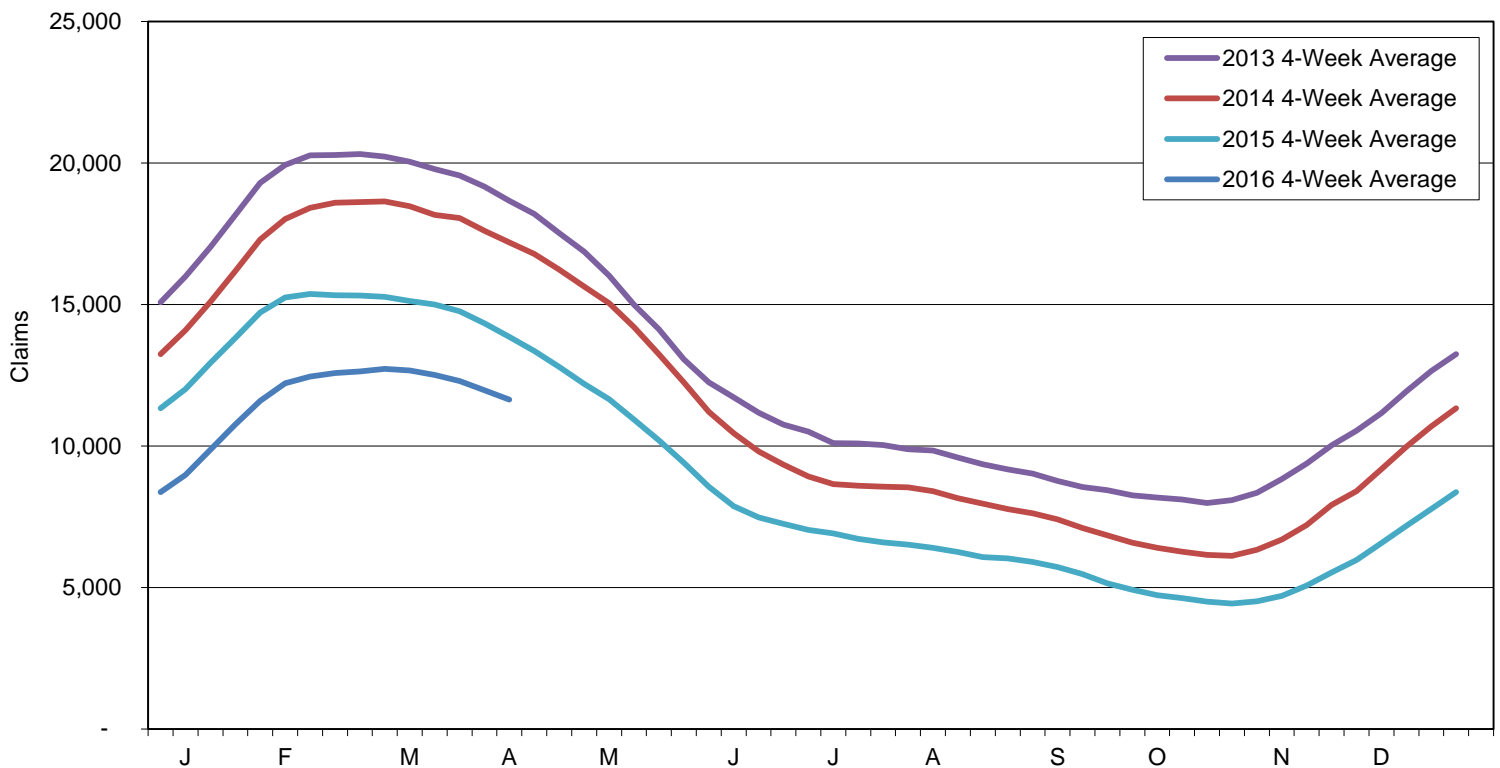


Note: Charts do not include data from Dislocated Worker Benefits, Trade Readjustment Allowance, and Unemployment Compensation for Federal Employees & Military programs due to their small numbers.

Initial Claims for Unemployment Compensation in Maine  
 4-Week Moving Averages for Regular Program



Continued Claims for Unemployment Compensation in Maine  
 4-Week Moving Averages for Regular Program



Note: Charts do not include data from Dislocated Worker Benefits, Trade Readjustment Allowance, and Unemployment Compensation for Federal Employees & Military programs due to their small numbers.