

Initial and Continued Claims by Program for Week Ending: 01/16/2016

Program		Current Week Claims	Last Week			Last Year		
			Claims	Net Change	% Change	Claims	Net Change	% Change
Regular	Initial:	1,704	2,917	▼ -1,213	-41.6	2,337	▼ -633	-27.1
	Continued:	12,102	11,702	▲ 400	3.4	15,304	▼ -3,202	-20.9
Workshare	Initial:	0	0	— 0	0.0	0	— 0	0.0
	Continued:	3	6	▼ -3	-50.0	0	▲ 3	0.0
Dislocated Worker Benefits	Initial:	31	29	▲ 2	6.9	32	▼ -1	-3.1
	Continued:	119	106	▲ 13	12.3	121	▼ -2	-1.7
Trade Readjustment Allowance	Initial:	0	2	▼ -2	-100.0	63	▼ -63	-100.0
	Continued:	189	222	▼ -33	-14.9	197	▼ -8	-4.1
Unemployment Compensation for Federal Employees & Military	Initial:	2	11	▼ -9	-81.8	4	▼ -2	-50.0
	Continued:	93	95	▼ -2	-2.1	102	▼ -9	-8.8
TOTAL ALL PROGRAMS		Initial:	1,737	2,959	▼ -1,222	-41.3	2,436	▼ -699
		Continued:	12,506	12,131	▲ 375	3.1	15,724	▼ -3,218

Note: Initial claims decreased due to fewer layoffs in Manufacturing, Accommodation & Food Services, Construction, and Administrative & Support & Waste Management & Remediation Services. For DWB and TRA programs, initial and continued claims are due to claimants in approved training exhausting Regular Benefits.

UNEMPLOYMENT INSURANCE FINANCIAL DATA FOR WEEK ENDING

12/26/2015

Regular Unemployment Insurance Benefits for Week	\$	2,203,985.15
Dislocated Workers Benefits Amount Paid for Week	\$	40,410.00
Trade Readjustment Allowance Benefits Amount Paid for Week	\$	92,705.59
Federal Programs Benefits Amount Paid for Week	\$	31,128.62
Net Amount of UI Contributions for Week	\$	58,287.26
Balance Available for UI Benefits as of Week Ending	\$	358,259,972.54
Net Benefits Paid Chargeable to Unemployment Compensation Fund for December 2015	\$	8,911,577.93

Note: Regular Benefits paid include reimbursable payments and other disbursements which are reported under the UI Program. Amount Paid may represent Continued Claims tallied in a prior week.

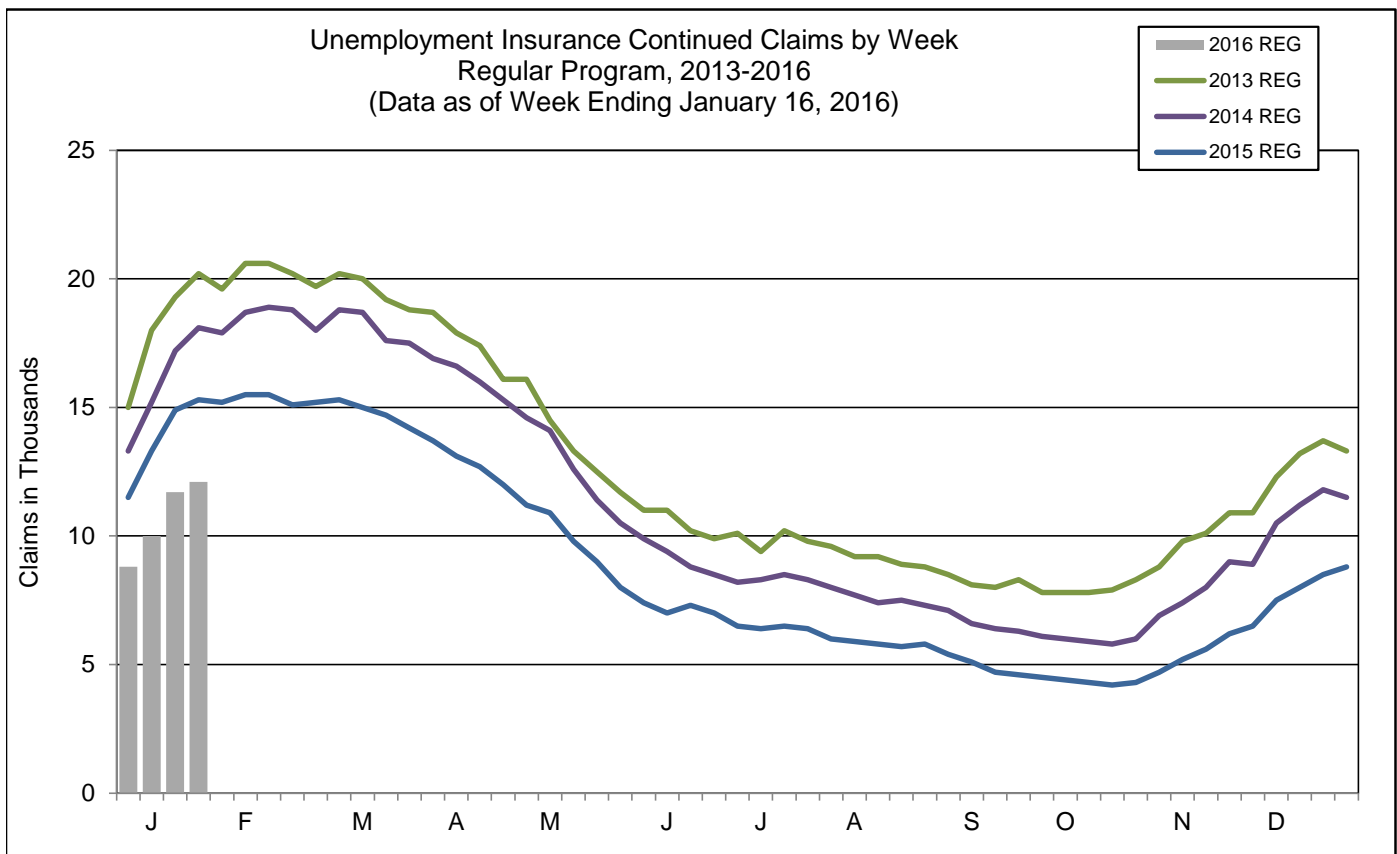
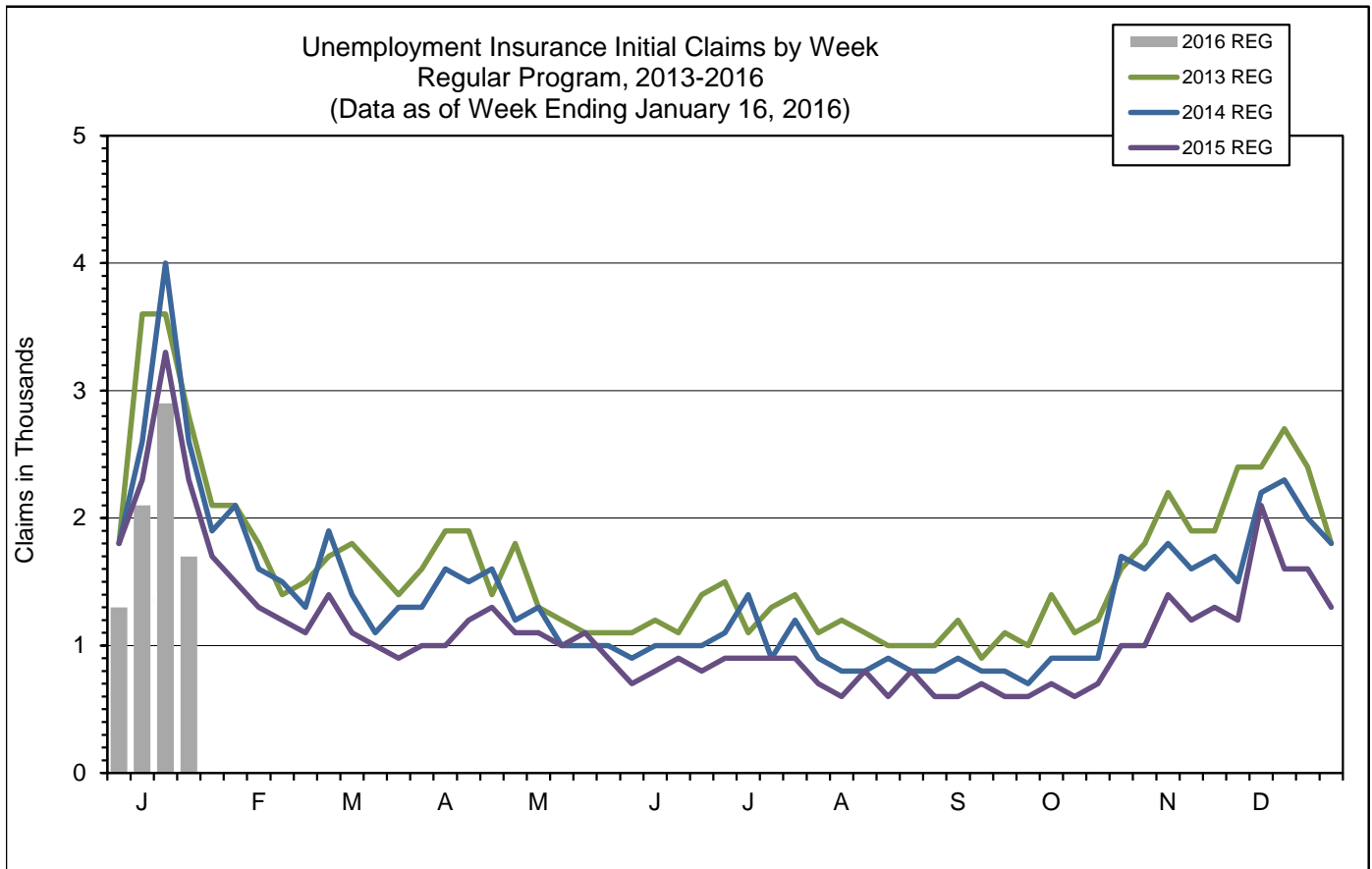
Extended Benefits Triggers On when the 13-Week Average Insured Unemployment Rate (IUR) reaches 5% and the IUR is 120% or higher than the last 2 years.

13-Week Average Insured Unemployment Week Ending 01/09/2016	1.33%
120% Threshold - Current IUR as a percent of the average IUR rate in the prior 2 years.	66.16%

IUR is calculated by taking the average of the Continued Claims claims over a rolling 13 week period divided by Covered Employment. Covered Employment is employment that falls under the Unemployment Insurance Program.

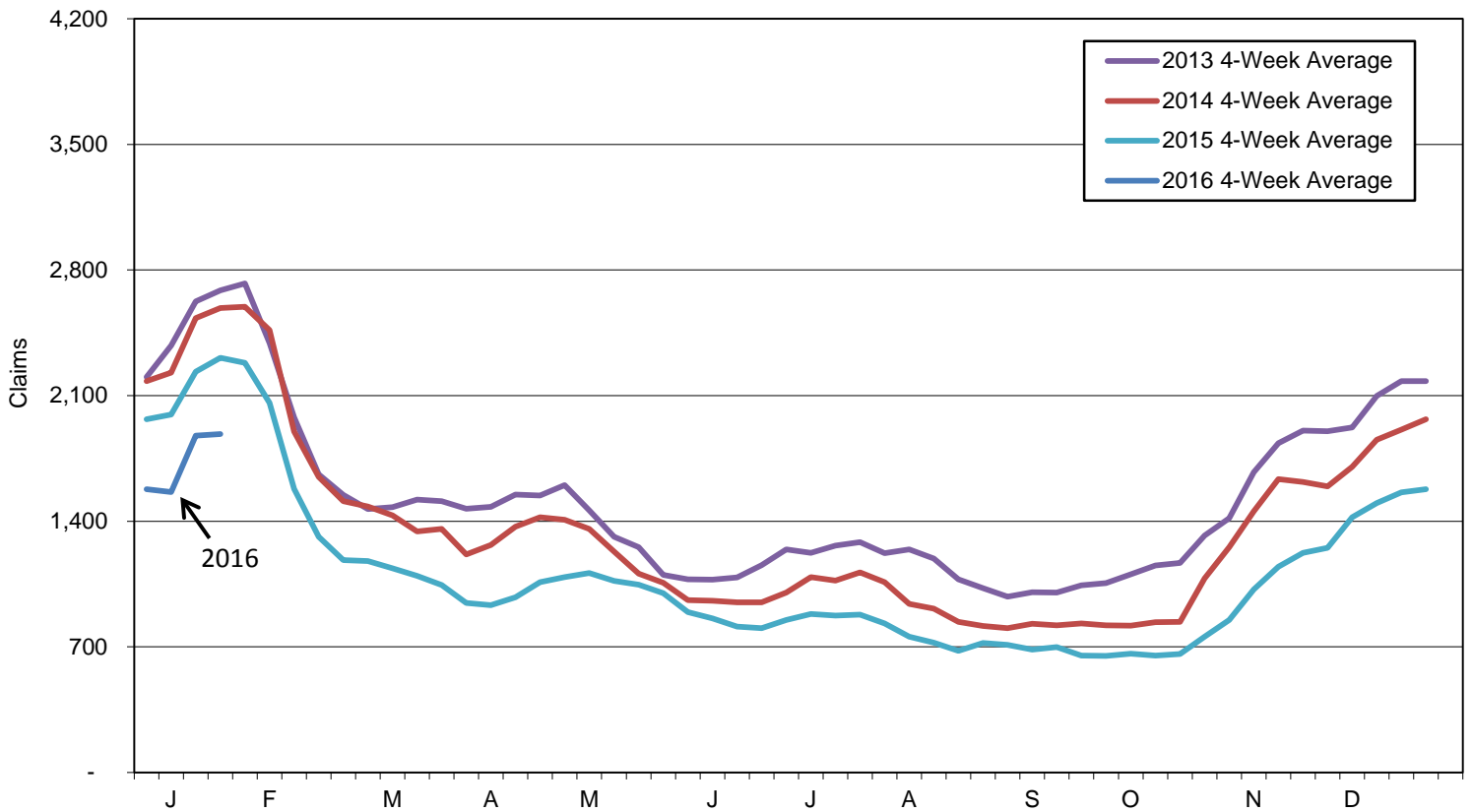
Mass Layoff Statistics
January 16, 2016

Year to Date	Number of Unique Employers	Number of Times Employers had 5 or more Initial Claims	Number of Initial Claims
2016	109	165	2,141
2015	114	173	1,886
Percent Change	▼ -4.4%	▼ -4.6%	▲ 13.5%

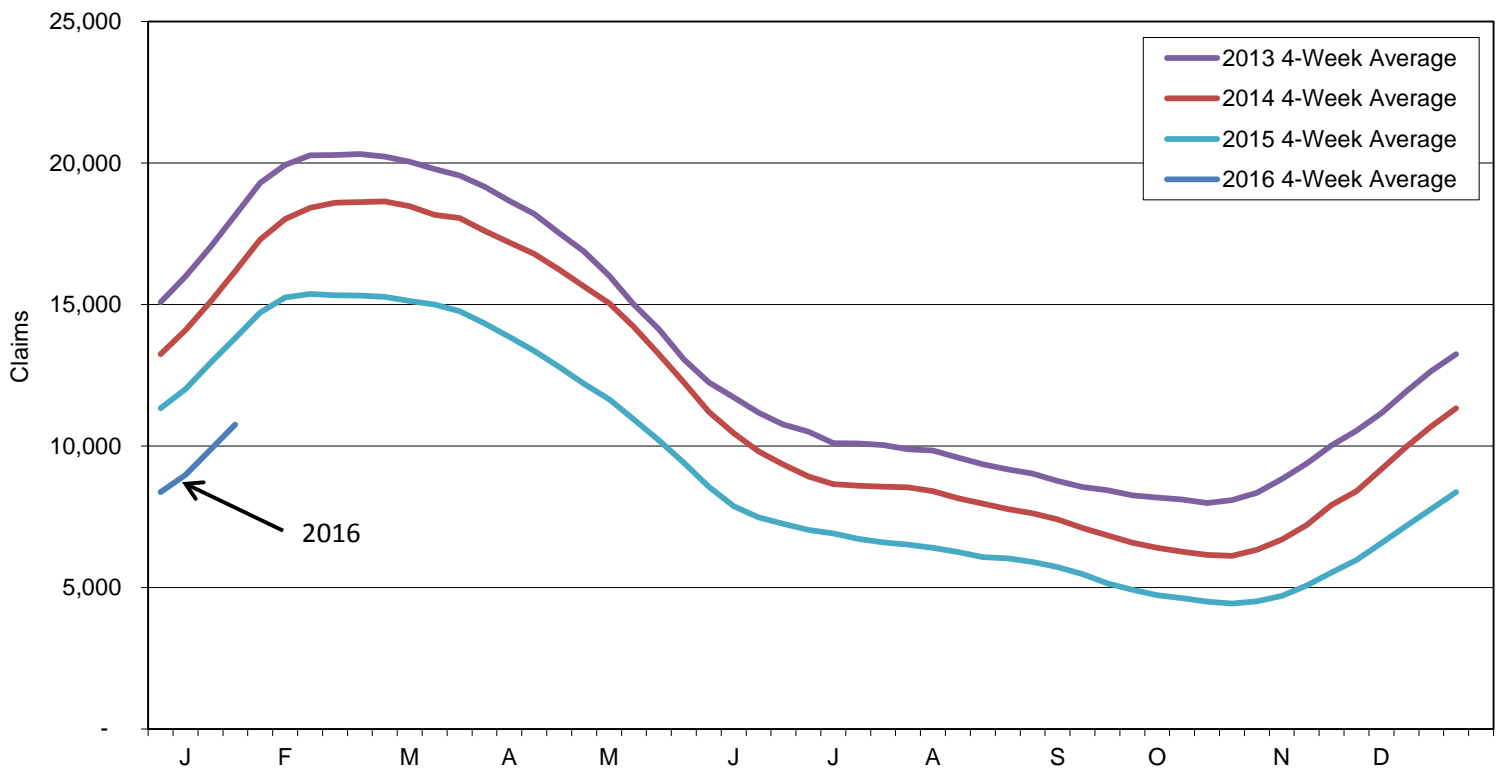


Note: Charts do not include data from Dislocated Worker Benefits, Trade Readjustment Allowance, and Unemployment Compensation for Federal Employees & Military programs due to their small numbers.

Initial Claims for Unemployment Compensation in Maine
4-Week Moving Averages for Regular Program



Continued Claims for Unemployment Compensation in Maine
4-Week Moving Averages for Regular Program



Note: Charts do not include data from Dislocated Worker Benefits, Trade Readjustment Allowance, and Unemployment Compensation for Federal Employees & Military programs due to their small numbers.