

**Initial and Continued Claims by Program for Week Ending: 10/31/2015**

Program		Current Week Claims	Last Week			Last Year		
			Claims	Net Change	% Change	Claims	Net Change	% Change
Regular	Initial:	1,043	1,001	▲ 42	4.2	1,563	▼ -520	-33.3
	Continued:	4,680	4,267	▲ 413	9.7	6,854	▼ -2,174	-31.7
Workshare	Initial:	0	0	— 0	0.0	0	— 0	0.0
	Continued:	4	8	▼ -4	-50.0	0	▲ 4	0.0
Dislocated Worker Benefits	Initial:	12	12	— 0	0.0	16	▼ -4	-25.0
	Continued:	156	156	— 0	0.0	215	▼ -59	-27.4
Trade Readjustment Allowance	Initial:	13	7	▲ 6	85.7	0	▲ 13	0.0
	Continued:	202	213	▼ -11	-5.2	234	▼ -32	-13.7
Unemployment Compensation for Federal Employees & Military	Initial:	8	7	▲ 1	14.3	9	▼ -1	-11.1
	Continued:	65	60	▲ 5	8.3	76	▼ -11	-14.5
<b>TOTAL ALL PROGRAMS</b>		<b>Initial:</b>	<b>1,076</b>	<b>▲ 49</b>	<b>4.8</b>	<b>1,588</b>	<b>▼ -512</b>	<b>-32.2</b>
		<b>Continued:</b>	<b>5,107</b>	<b>▲ 403</b>	<b>8.6</b>	<b>7,379</b>	<b>▼ -2,272</b>	<b>-30.8</b>

**Note:** For DWB and TRA programs, the increase in initial and continued claims are due to claimants in approved training exhausting Regular Benefits.

**UNEMPLOYMENT INSURANCE FINANCIAL DATA FOR WEEK ENDING**

**10/10/2015**

Regular Unemployment Insurance Benefits for Week	\$	1,199,733.92
Dislocated Workers Benefits Amount Paid for Week	\$	48,601.00
Trade Readjustment Allowance Benefits Amount Paid for Week	\$	92,990.51
Federal Programs Benefits Amount Paid for Week	\$	17,383.57
Net Amount of UI Contributions for Week	\$	292,410.09
Balance Available for UI Benefits as of Week Ending	\$	350,652,313.58
Net Benefits Paid Chargeable to Unemployment Compensation Fund for Sep 2015	\$	4,461,826.07

**Note:** Regular Benefits paid include reimbursable payments and other disbursements which are reported under the UI Program. Amount Paid may represent Continued Claims tallied in a prior week.

**Extended Benefits Triggers On when the 13-Week Average Insured Unemployment Rate (IUR) reaches 5% and the IUR is 120% or higher than the last 2 years.**

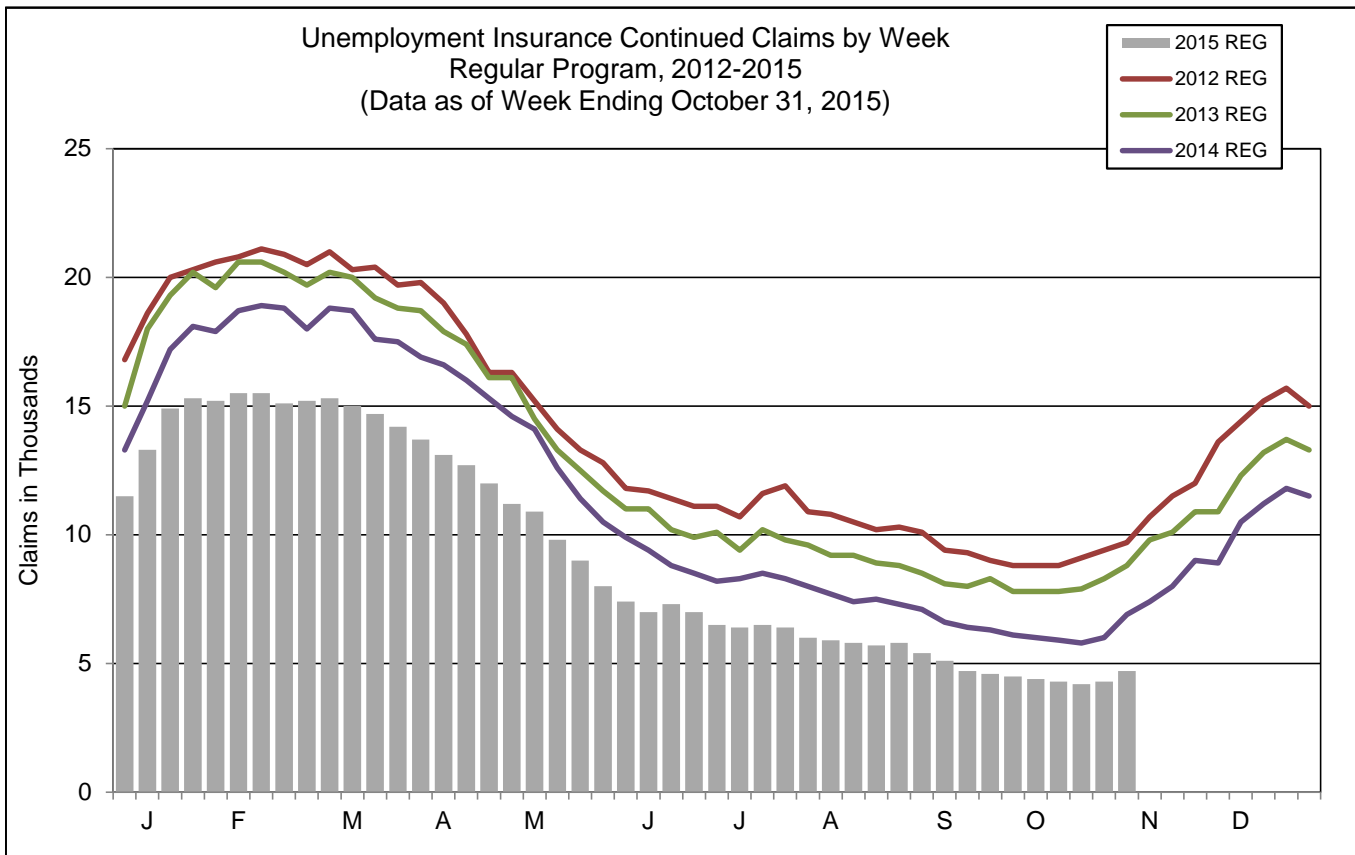
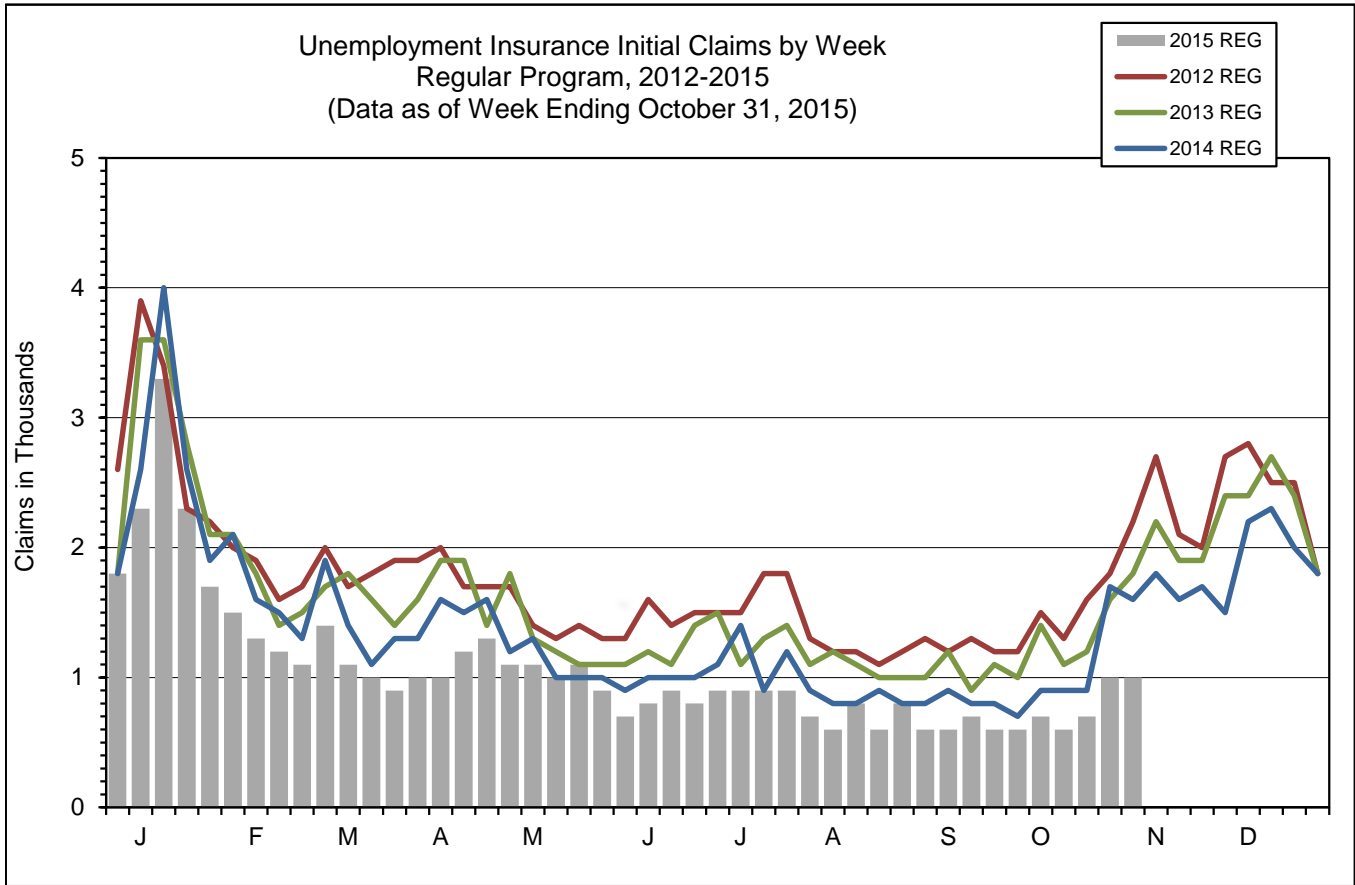
13-Week Average Insured Unemployment Week Ending 10/24/2015	0.87%
120% Threshold - Current IUR as a percent of the average IUR rate in the prior 2 years.	65.16%

IUR is calculated by taking the average of the Continued Claims claims over a rolling 13 week period divided by Covered Employment. Covered Employment is employment that falls under the Unemployment Insurance Program.

**Mass Layoff Statistics**

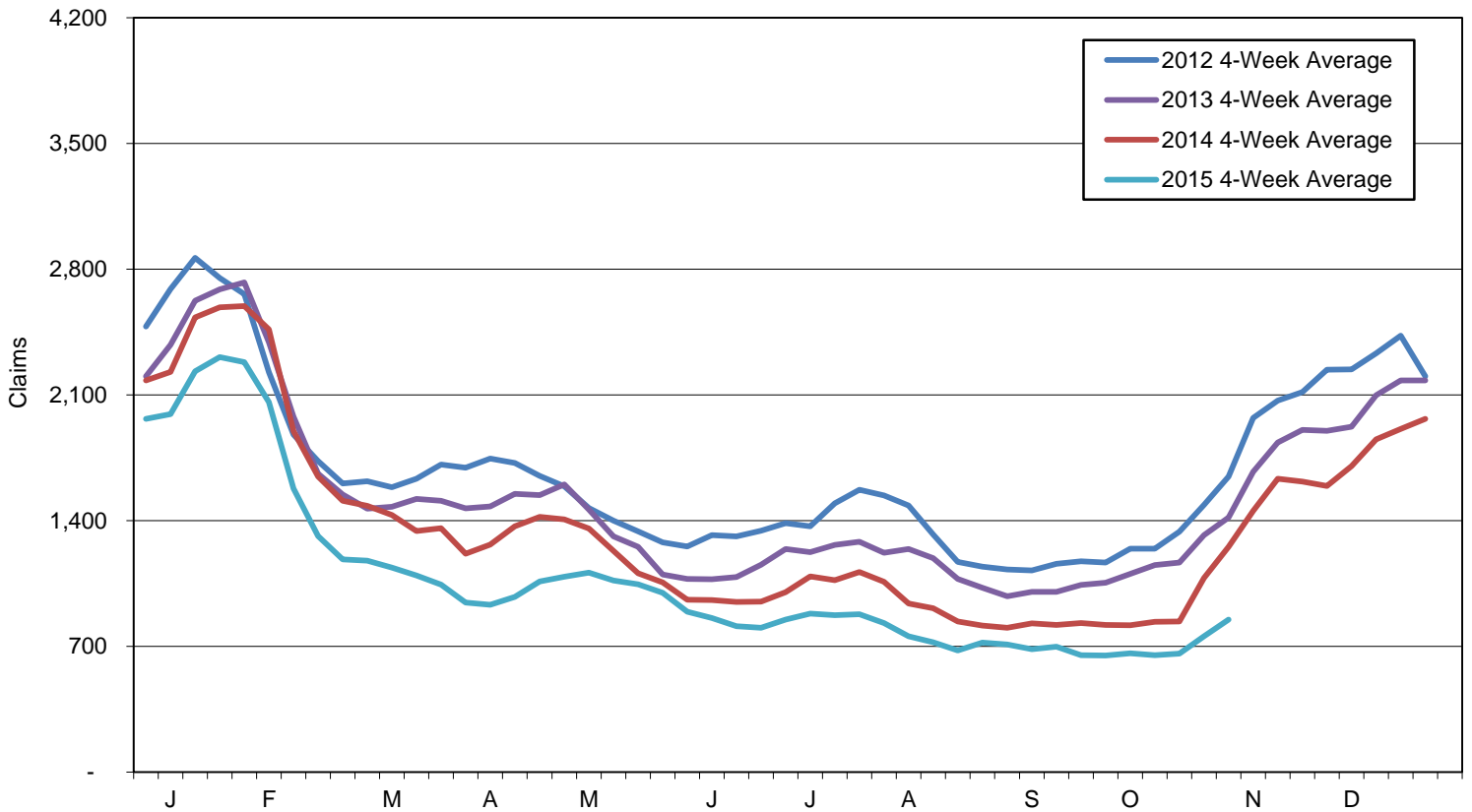
**October 31, 2015**

Year to Date	Number of Unique Employers	Number of Times Employers had 5 or more Initial Claims	Number of Initial Claims
2015	272	848	9,054
2014	331	997	10,845
Percent Change	▼ -17.8%	▼ -14.9%	▼ -16.5%

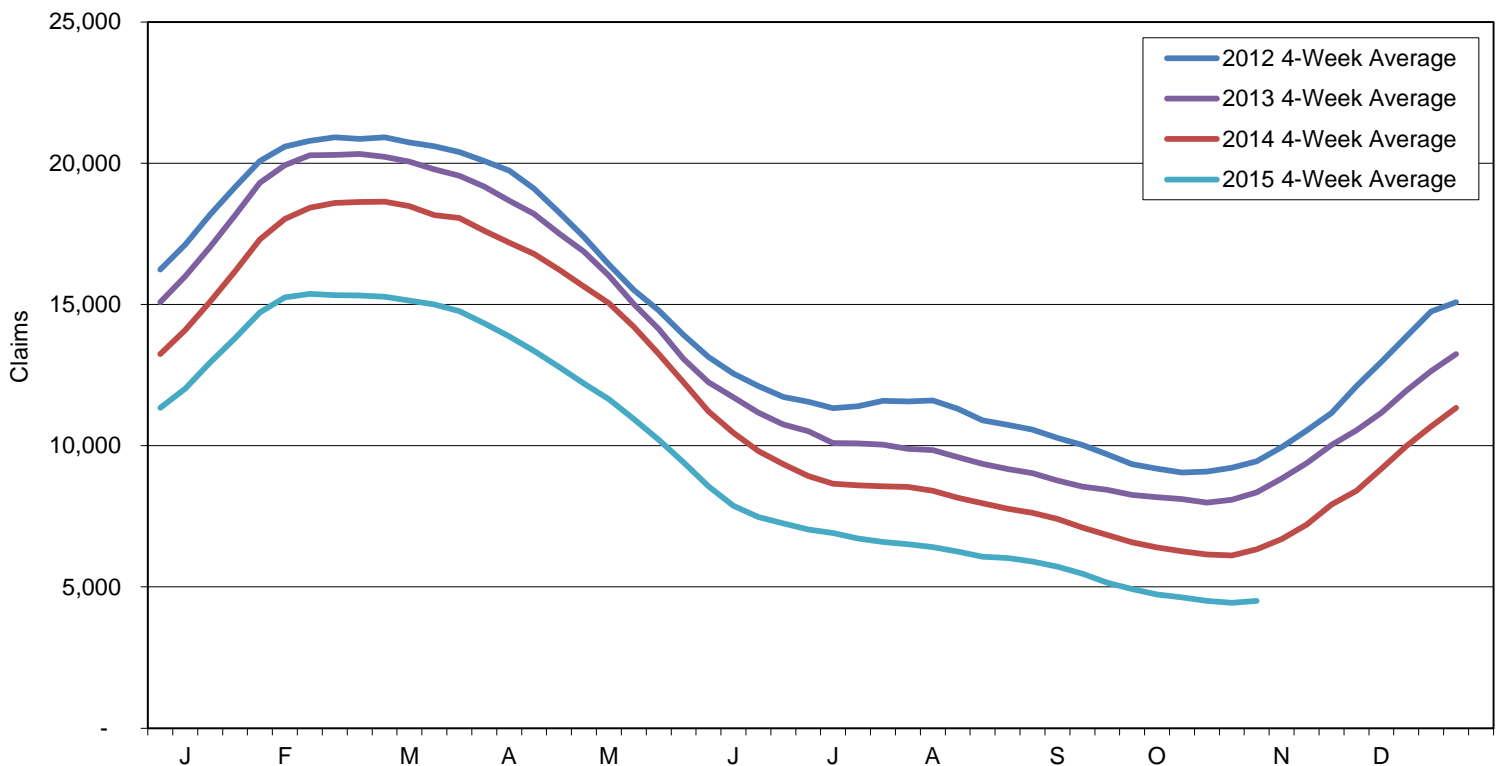


Note: Charts do not include data from Dislocated Worker Benefits, Trade Readjustment Allowance, and Unemployment Compensation for Federal Employees & Military programs due to their small numbers.

Initial Claims for Unemployment Compensation in Maine  
4-Week Moving Averages for Regular Program



Continued Claims for Unemployment Compensation in Maine  
4-Week Moving Averages for Regular Program



Note: Charts do not include data from Dislocated Worker Benefits, Trade Readjustment Allowance, and Unemployment Compensation for Federal Employees & Military programs due to their small numbers.