

Red Brand  
Woods Eco Analysis  
PMMX Hampton  
781-730-667

B 773-8650  
C 756-2900  
P.O. Box 4931  
Hampton, ME 04104

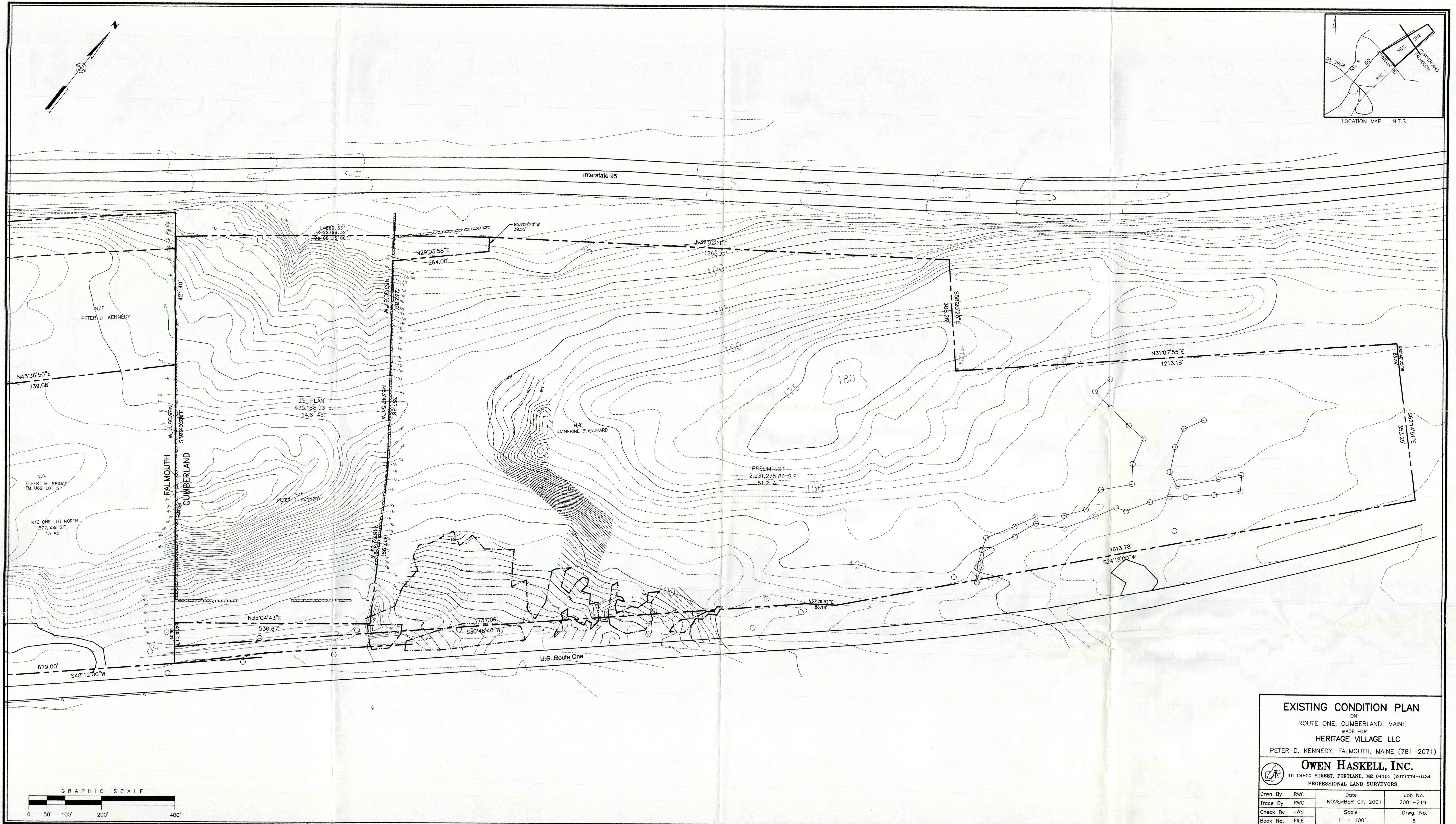
831-4586  
Cell 831-4586  
Peter Kennedy  
781-2071

### CONCEPTUAL PLAN FOR

HERITAGE HILLS  
ON  
ROUTE ONE, CUMBERLAND, MAINE  
MADE FOR  
GREATER PORTLAND DEVELOPMENT GROUP  
PETER D. KENNEDY, FALMOUTH, MAINE (781-2071)

MOHR & SERADIN LANDSCAPE ARCHITECTS OWEN HASKELL SHELLEIGH			16 CASE RD FALMOUTH, ME 04101
Drawn By	RWC	Date	May 2001
Trace By	RWC	Scale	1" = 150'
Check By	JWS	Drawn No.	99198FA
Book No.	FILE		1





**EXISTING CONDITION PLAN**  
ON  
ROUTE ONE, CUMBERLAND, MAINE  
MADE FOR  
**HERITAGE VILLAGE LLC**  
PETER D. KENNEDY, FALMOUTH, MAINE (781-2071)

**OWEN HASKELL, INC.**  
16 CASCO STREET, PORTLAND, ME 04101 (207) 774-0424  
PROFESSIONAL LAND SURVEYORS

Drawn By	RWC	Date	NOVEMBER 07, 2001	Job No.	2001-219
Trace By	RWC				
Check By	JWS	Scale	1" = 100'	Drwg. No.	5
Book No.	FILE				