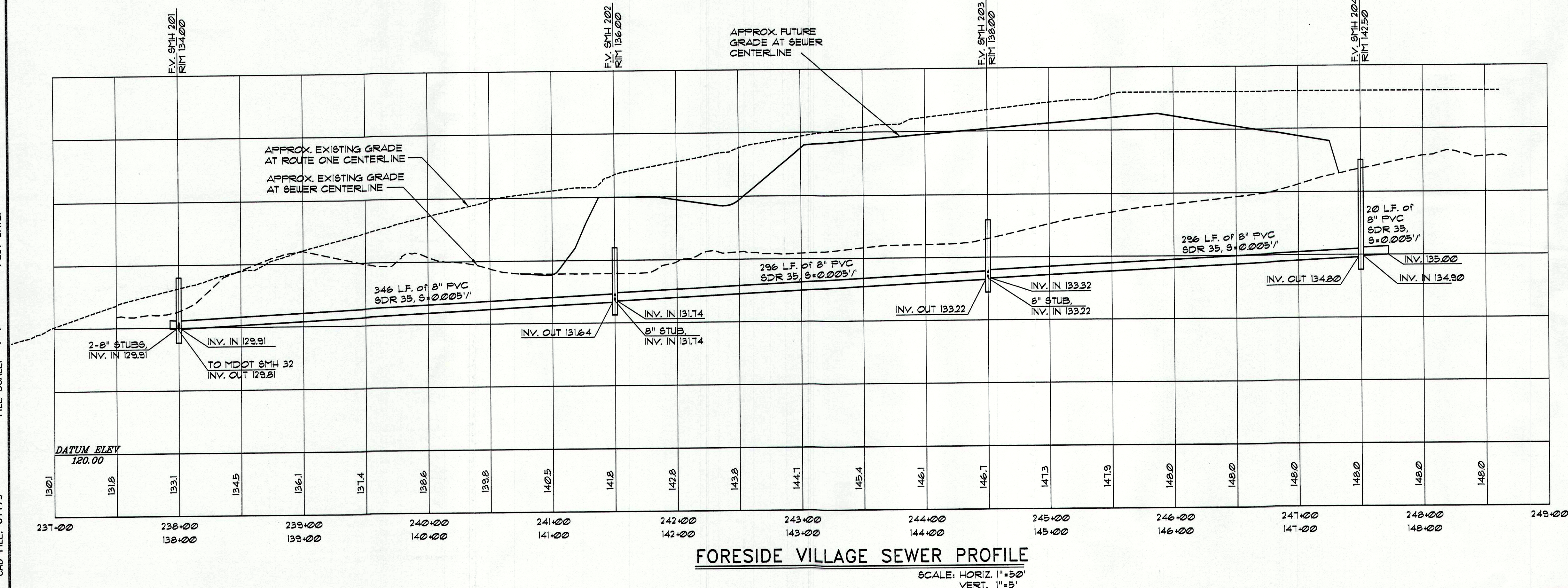
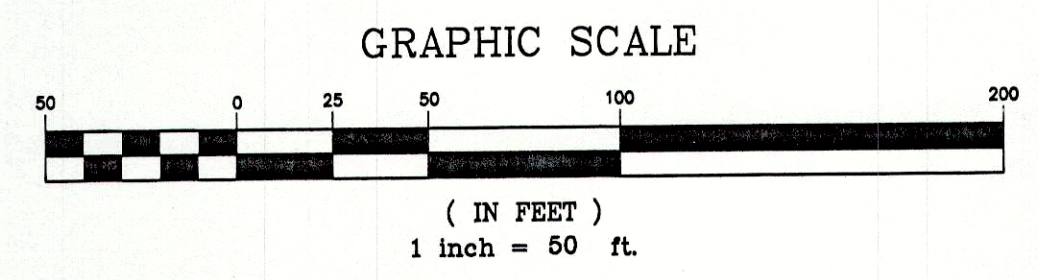
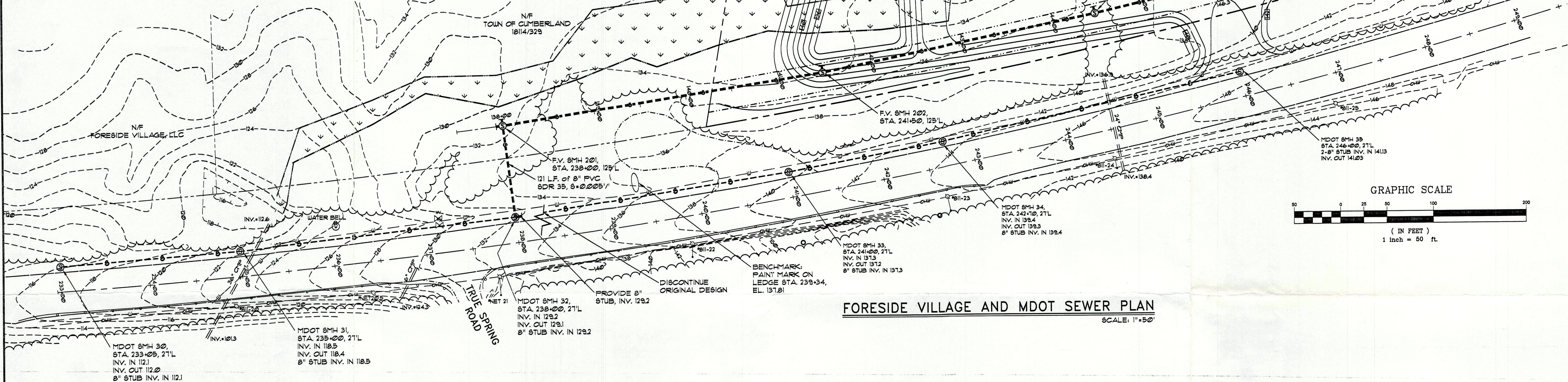


- LEGEND**
- EXISTING**
- PROPERTY LINE
 - ADJUTERS PROPERTY
 - EDGE OF PAVEMENT
 - CENTERLINE OF PAVEMENT
 - EDGE OF GRAVEL
 - CONTOURS
 - GROUND DEPRESSION
 - OVERHEAD WIRES
 - WATER LINE
 - UTILITY POLE
 - TREELINE
 - IRON PIPE FOUND
 - HYDRANT
 - WATER BELL
 - GATE VALVE
 - STONE WALL
 - WETLAND
- PROPOSED**
- 30' SEWER EASEMENT
 - SANITARY SEWER-FORESIDE VILLAGE DESIGN
 - SANITARY MANHOLE-F.V.
 - SANITARY SEWER-MDOT DESIGN
 - SANITARY MANHOLE-MDOT
 - FUTURE CONTOURS
 - FUTURE SPOT GRADE



REV.	DATE	DESCRIPTION

FORESIDE VILLAGE LLC
91 JOHNSON ROAD, FALMOUTH ME

FORESIDE VILLAGE
U.S. ROUTE ONE, CUMBERLAND

PINKHAM & GREER
CONSULTING ENGINEERS, INC.
FALMOUTH, MAINE

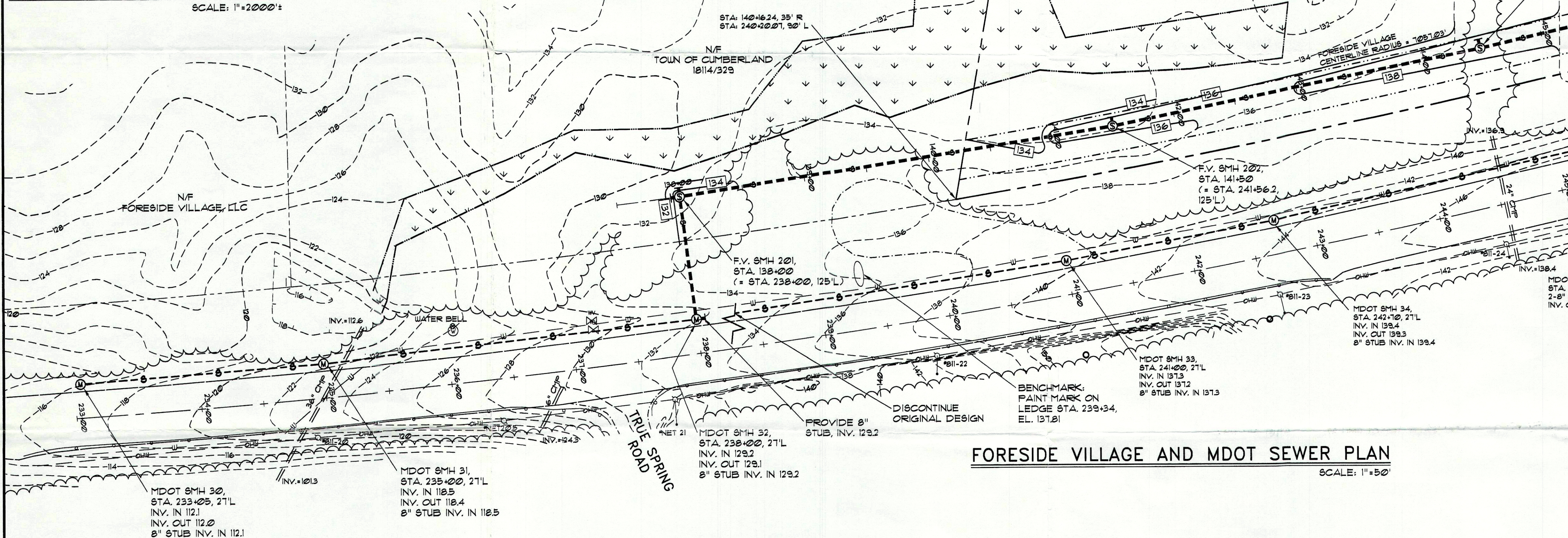
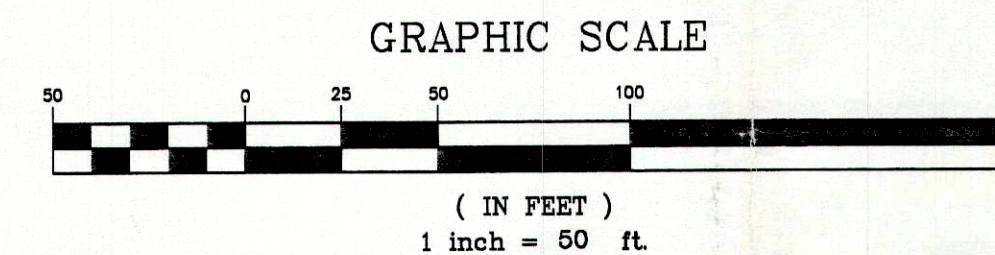
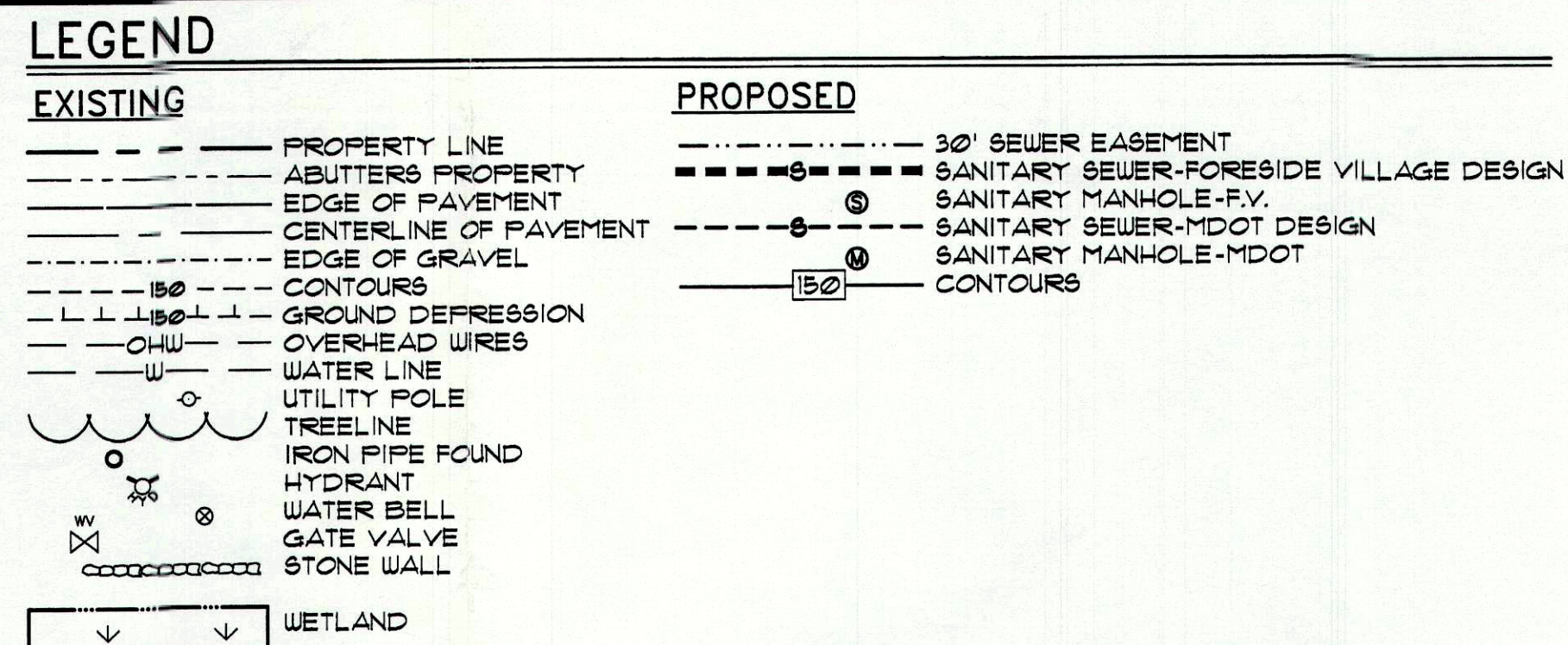
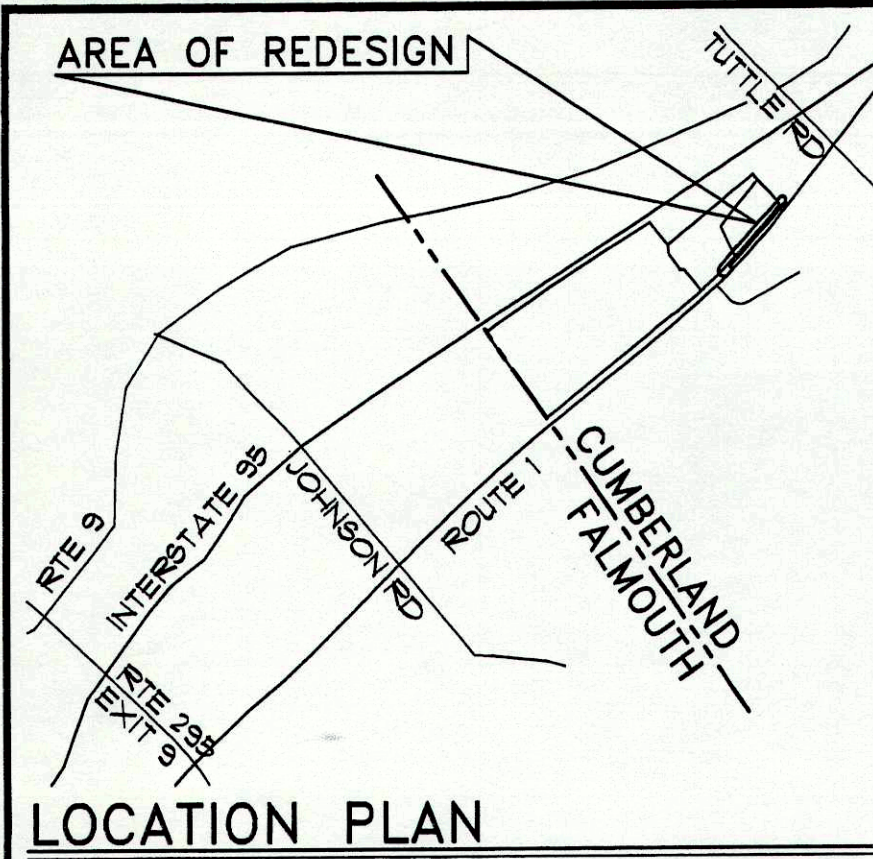
SEWER PLAN & PROFILE

SCALE: AS SHOWN DRN BY: JDC

DATE: APRIL 11, 2003 DESG BY: TSG

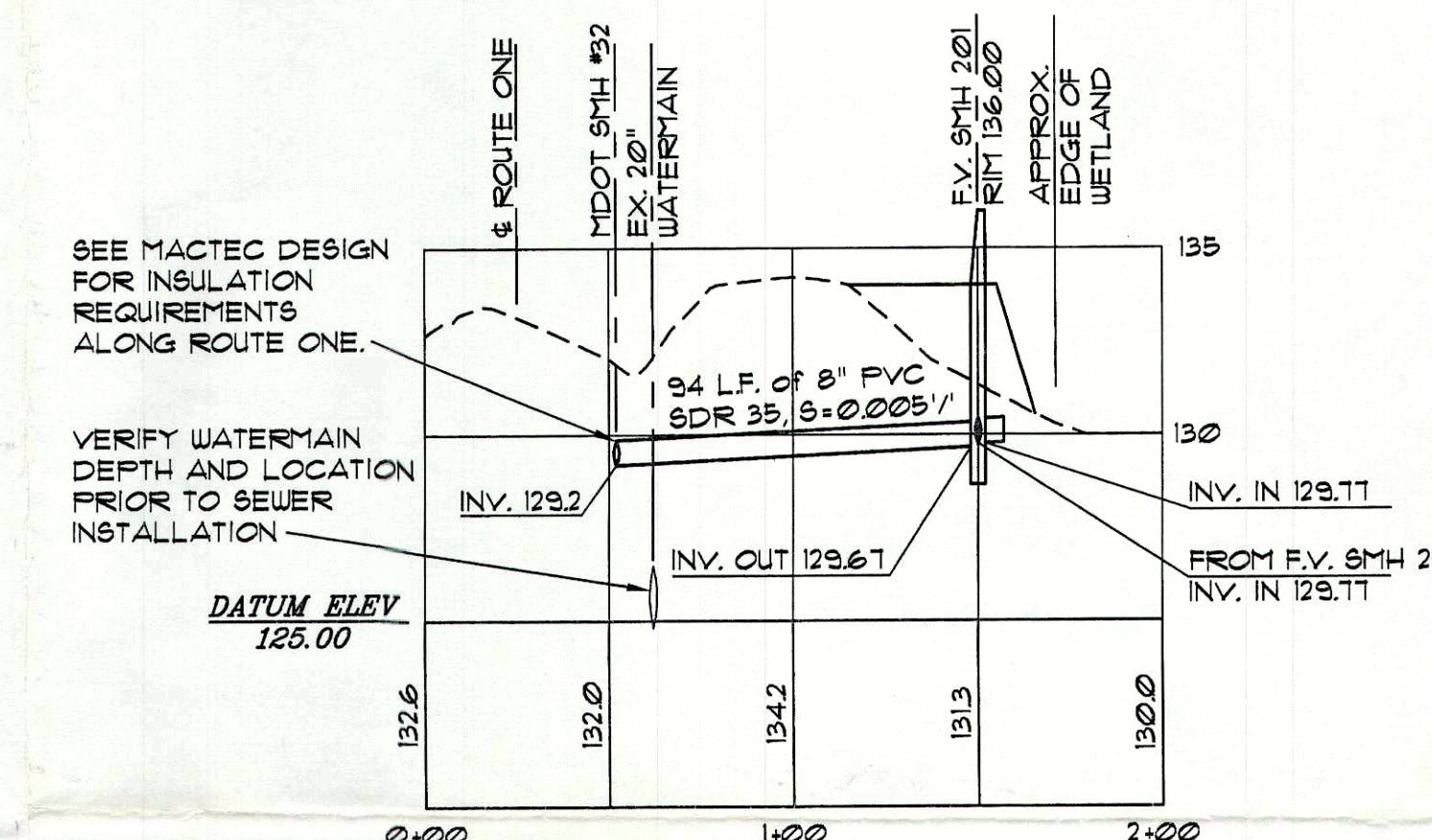
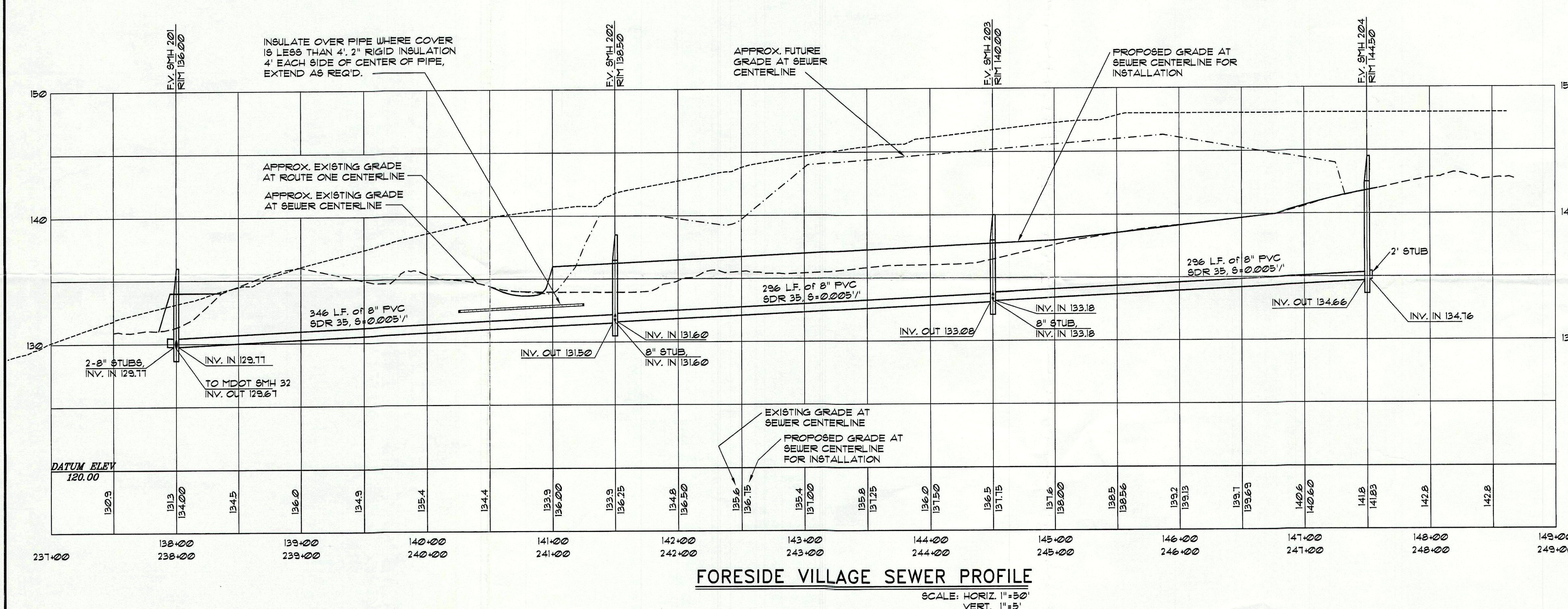
PROJECT: 01179, SEWER CHK BY: TSG

C1



GENERAL NOTES

- BOUNDARY & TOPOGRAPHY TAKEN FROM "BOUNDARY & TOPOGRAPHY SURVEY ON ROUTE ONE CUMBERLAND, ME MADE FOR PETER D. KENNEDY, 18 CARROLL STREET, FALMOUTH, MAINE" BY OWEN HASKELL, INC., 16 CASCO STREET, PORTLAND, ME 04101, JANUARY 09, 2002. REVISED 02-13-03 "ADJUSTED ELEVATIONS".
- LOCATION: CENTERLINE OF THE MDOT SANITARY SEWER IS 21' LEFT OF THE ROUTE ONE PAVEMENT CENTERLINE (WHICH IS ALSO 5' OFF THE EDGE OF PAVEMENT).
- CENTERLINE FOR THE FORESIDE VILLAGE SANITARY SEWER IS 125' LEFT OF THE ROUTE ONE PAVEMENT CENTERLINE AND 98' LEFT OF THE MDOT SANITARY SEWER CENTERLINE.
- ALL STUBS TO BE 2' LONG WITH A CAP. STUB SLOPE = 0.005'/.
- RIMS FOR F.V. SMH #202, F.V. SMH #203, F.V. SMH #204 TO BE AT ELEVATIONS NOTED (2' MIN. ABOVE EX. GRADE); INSTALL W/ A CONE SECTION LEFT 2' ABOVE EXISTING GRADE WITH THE MANHOLE FRAME & COVER LEFT OVER THE CONCRETE OPENING BUT NOT MORTARED ON.
- RIM FOR F.V. SMH #201 TO BE AT ELEVATION NOTED. INSTALL W/ A CONE SECTION LEFT 2' ABOVE EXISTING GRADE WITH THE MANHOLE FRAME & COVER MORTARED ON.
- LOAM & SEED ALL DISTURBED AREAS.



REV.	DATE	DESCRIPTION
1	4/15/03	REV'D PER MACTEC REVIEW COMMENTS
<p>FORESIDE VILLAGE LLC 91 JOHNSON ROAD, FALMOUTH ME</p> <p>FORESIDE VILLAGE U.S. ROUTE ONE, CUMBERLAND</p> <p>ROUTE ONE SEWER STA. 238+00 TO 248+00</p>		
SCALE:	AS SHOWN	DRN BY: JDC
DATE:	APRIL 11, 2003	DESIGN BY: TSG
PROJECT:	01179, SEWER	CHK BY: TSG

