

R-2

R-4

TUTTLE ROAD

KINGS HIGHWAY
TOWN LANDING ROAD

YARMOUTH

BROAD COVE

CASCO BAY

U-5A

U-6

U-5

U-4

U-3

U-1A

U-2

U-1

FALMOUTH

PROPERTY MAP
CUMBERLAND, MAINE R-1
APRIL 1, 1972
SCALE: 1"=500'

REVISED & REPRINTED
JOHN E. O'DONNELL AND ASSOCIATES
AUBURN, MAINE

Do not
remove
R6D Set

72
1912
54

1200
2400.00
2112.00
242.00
2178.00

14
13
70

150
122
272

500.
470.
30.
192.
72.
168

170
80
90

R-3

Bad 150

46
151 AC.

48 47

17 AC. 18 1/2 AC.

16 AC.

17 1/2 AC.

40 AC.

15 1/2 AC.

15 AC.

15 AC.

16 AC.

17 1/2 AC.

17 1/2 AC.

40 AC.

55

54

53

52

51

50

49

48

47

46

45

44

43

42

41

40

39

38

37

36

35

34

33

32

31

30

29

28

27

26

25

24

23

22

21

20

19

18

17

16

15

14

13

12

11

10

9

8

7

6

5

4

3

2

1

0

-1

-2

-3

-4

-5

-6

-7

-8

-9

-10

-11

-12

-13

-14

-15

-16

-17

-18

-19

-20

-21

-22

-23

-24

-25

-26

-27

-28

-29

-30

-31

-32

-33

-34

-35

-36

-37

-38

-39

-40

-41

-42

-43

-44

-45

-46

-47

-48

-49

-50

-51

-52

-53

-54

-55

-56

-57

-58

-59

-60

-61

-62

-63

-64

-65

-66

-67

-68

-69

-70

-71

-72

-73

-74

-75

-76

-77

-78

-79

-80

-81

-82

-83

-84

-85

-86

-87

-88

-89

-90

-91

-92

-93

-94

-95

-96

-97

-98

-99

-100

-101

-102

-103

-104

-105

-106

-107

-108

-109

-110

-111

-112

-113

-114

-115

-116

-117

-118

-119

-120

-121

-122

-123

-124

-125

-126

-127

-128

-129

-130

-131

-132

-133

-134

-135

-136

-137

-138

-139

-140

-141

-142

-143

-144

-145

-146

-147

-148

-149

-150

-151

-152

-153

-154

-155

-156

-157

-158

-159

-160

-161

-162

-163

-164

-165

-166

-167

-168

-169

-170

-171

-172

-173

-174

-175

-176

-177

-178

-179

-180

-181

-182

-183

-184

-185

-186

-187

-188

-189

-190

-191

-192

-193

-194

-195

-196

-197

-198

-199

-200

-201

-202

-203

-204

-205

-206

-207

-208

-209

-210

-211

-212

-213

-214

-215

-216

-217

-218

-219

-220

-221

-222

-223

-224

-225

-226

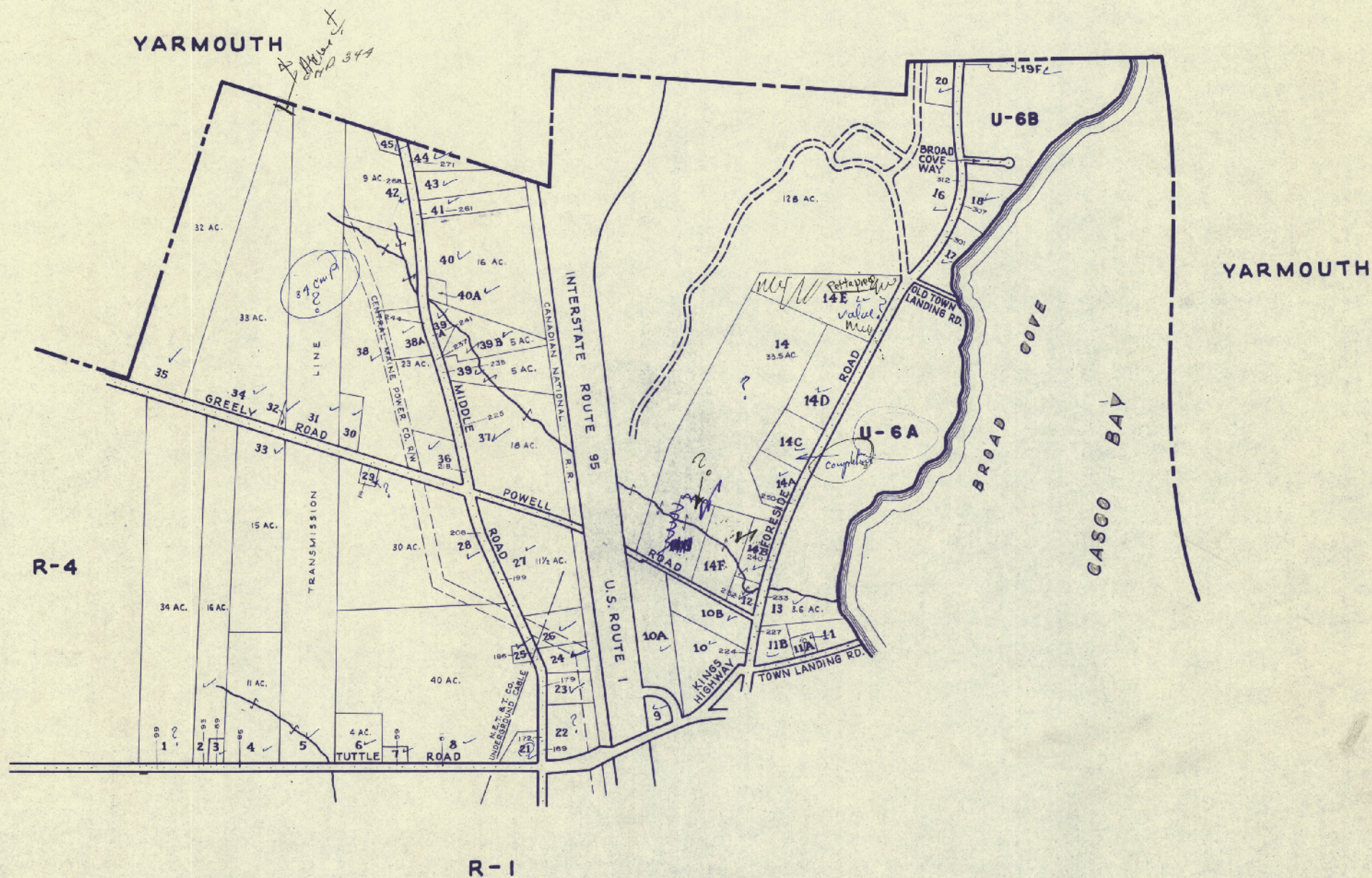
-227

-228

-229

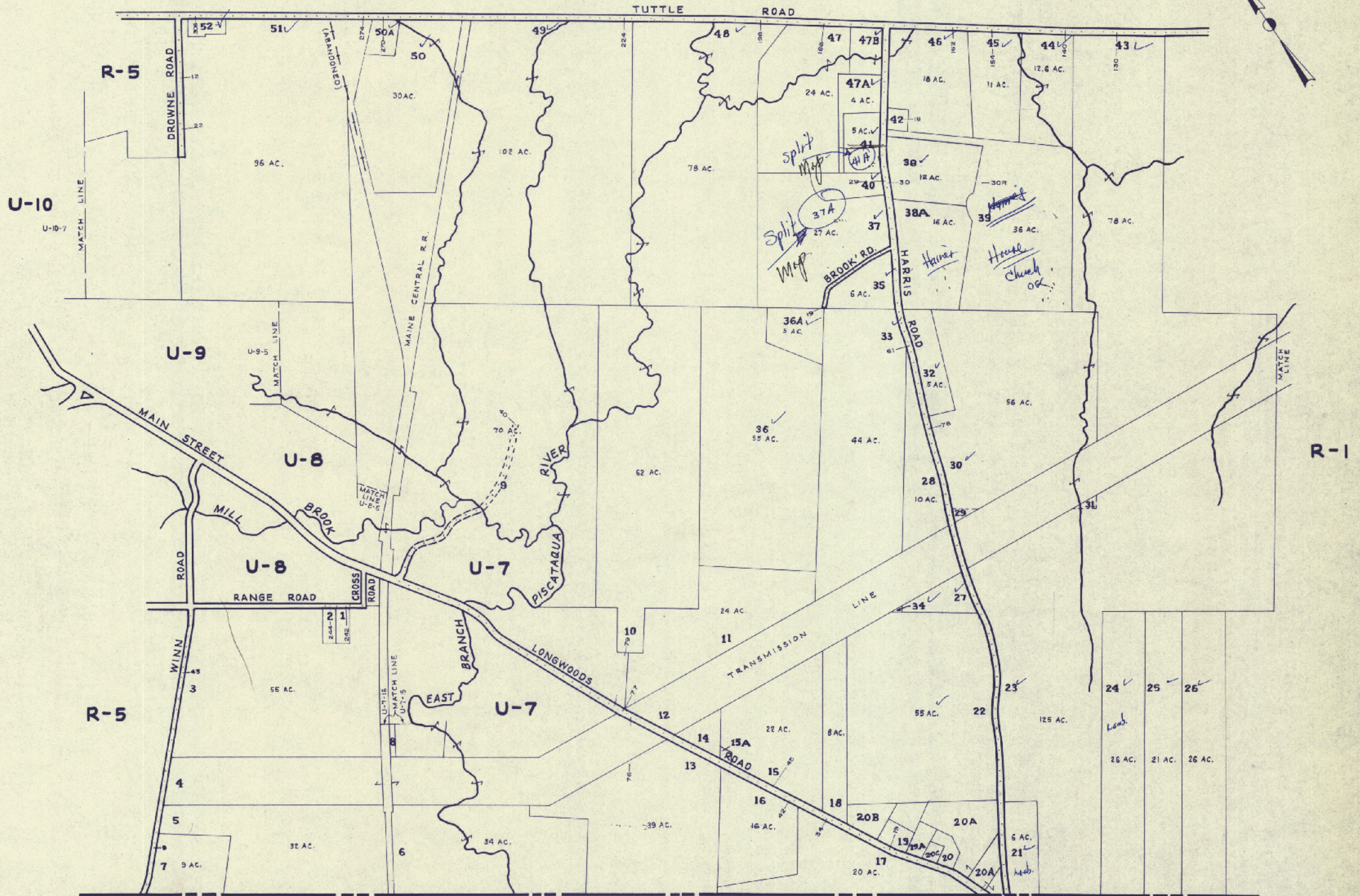
-230

-231



PROPERTY MAP
CUMBERLAND, MAINE R-2
APRIL 1, 1972 SCALE: 1"=500'

R-4



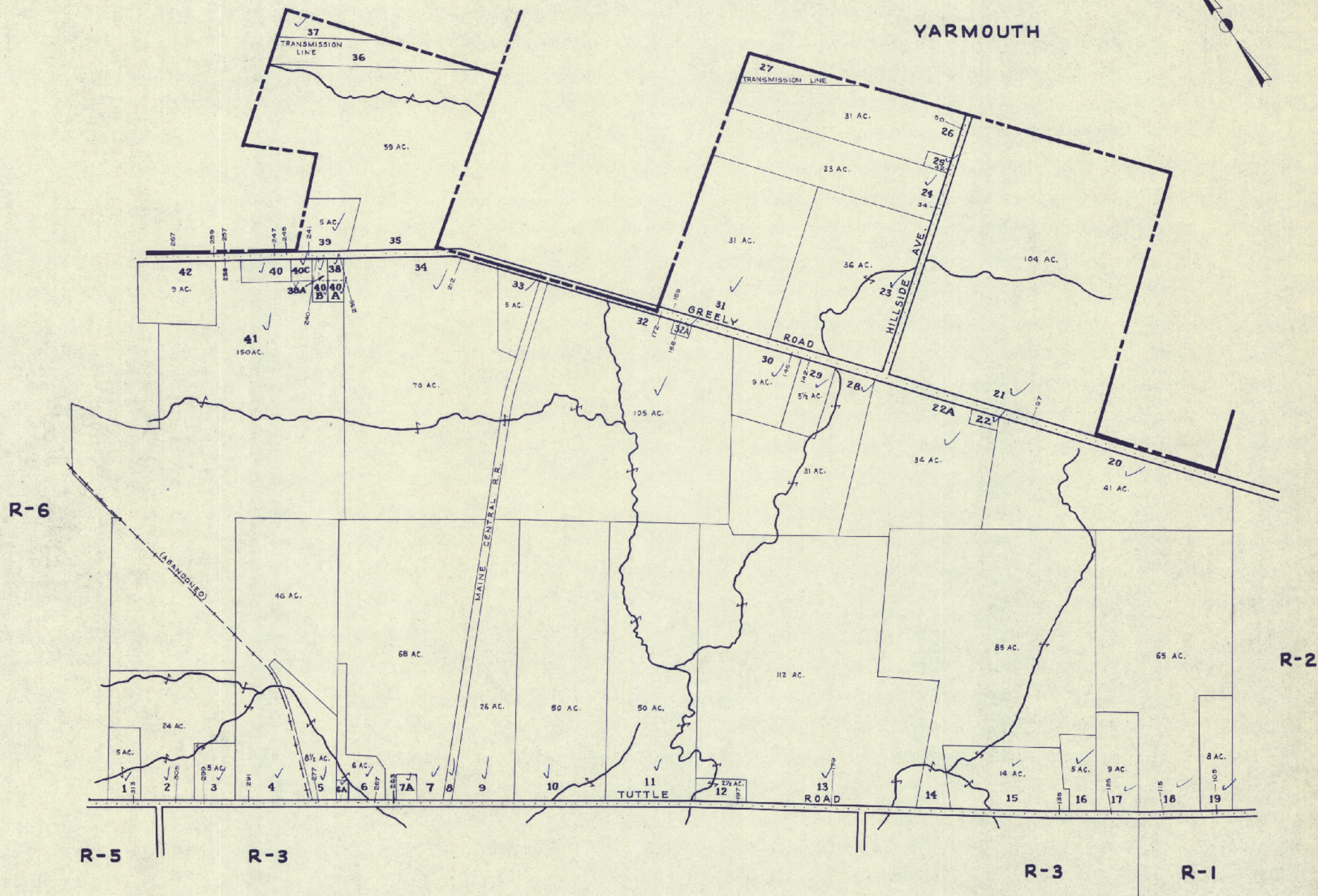
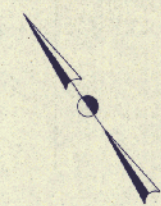
FALMOUTH

REVISED & REPRINTED
JOHN E. O'DONNELL AND ASSOCIATES,
AUBURN, MAINE

PROPERTY MAP
CUMBERLAND, MAINE R-3
APRIL 1, 1972 SCALE: 1" = 500'

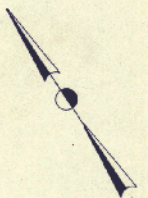
NORTH YARMOUTH

YARMOUTH

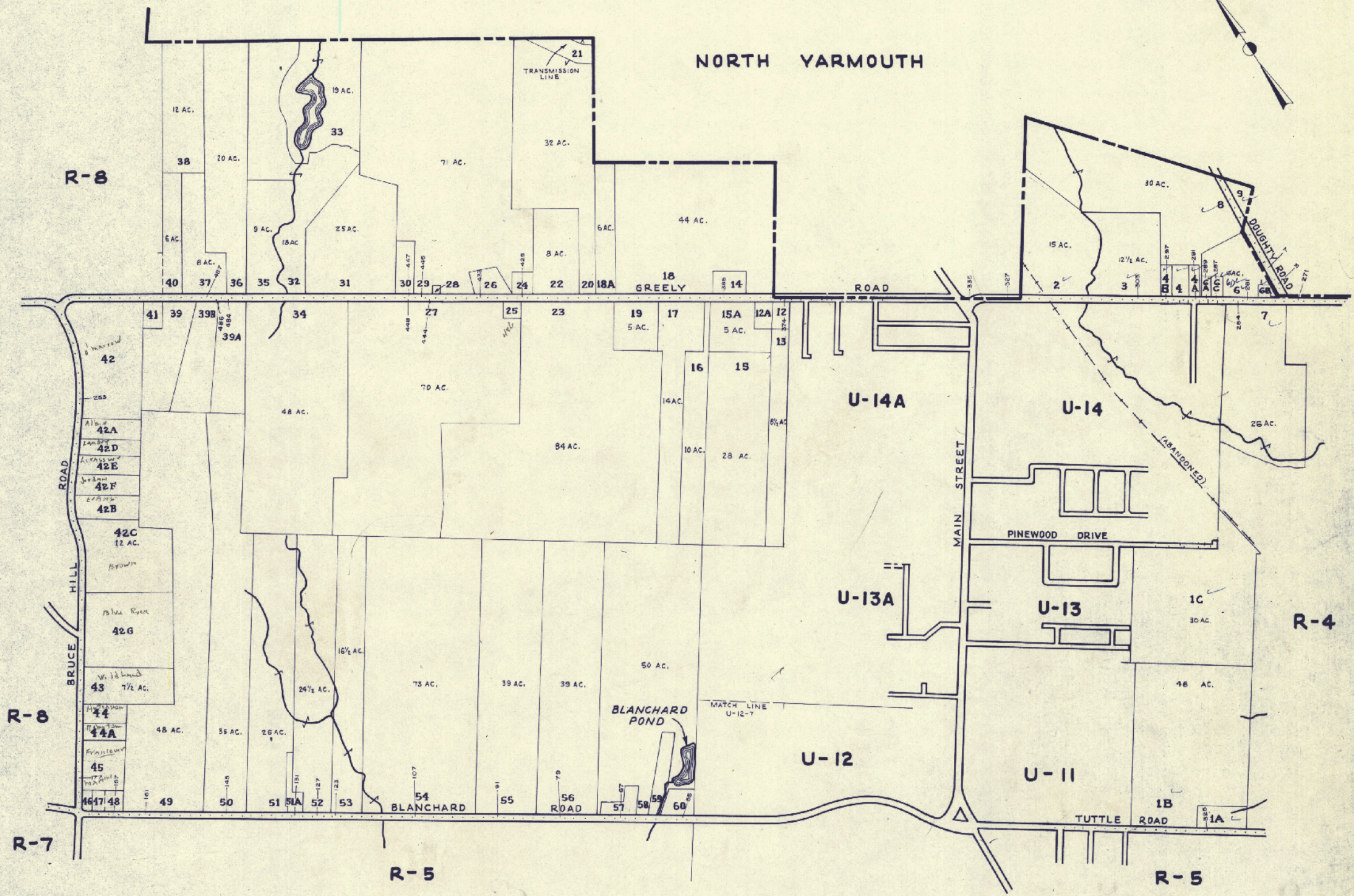


REVISED & REPRINTED
JOHN E. O'DONNELL AND ASSOCIATES
AUBURN, MAINE

PROPERTY MAP
CUMBERLAND, MAINE R-4
APRIL 1, 1972 SCALE: 1"=500'



NORTH YARMOUTH



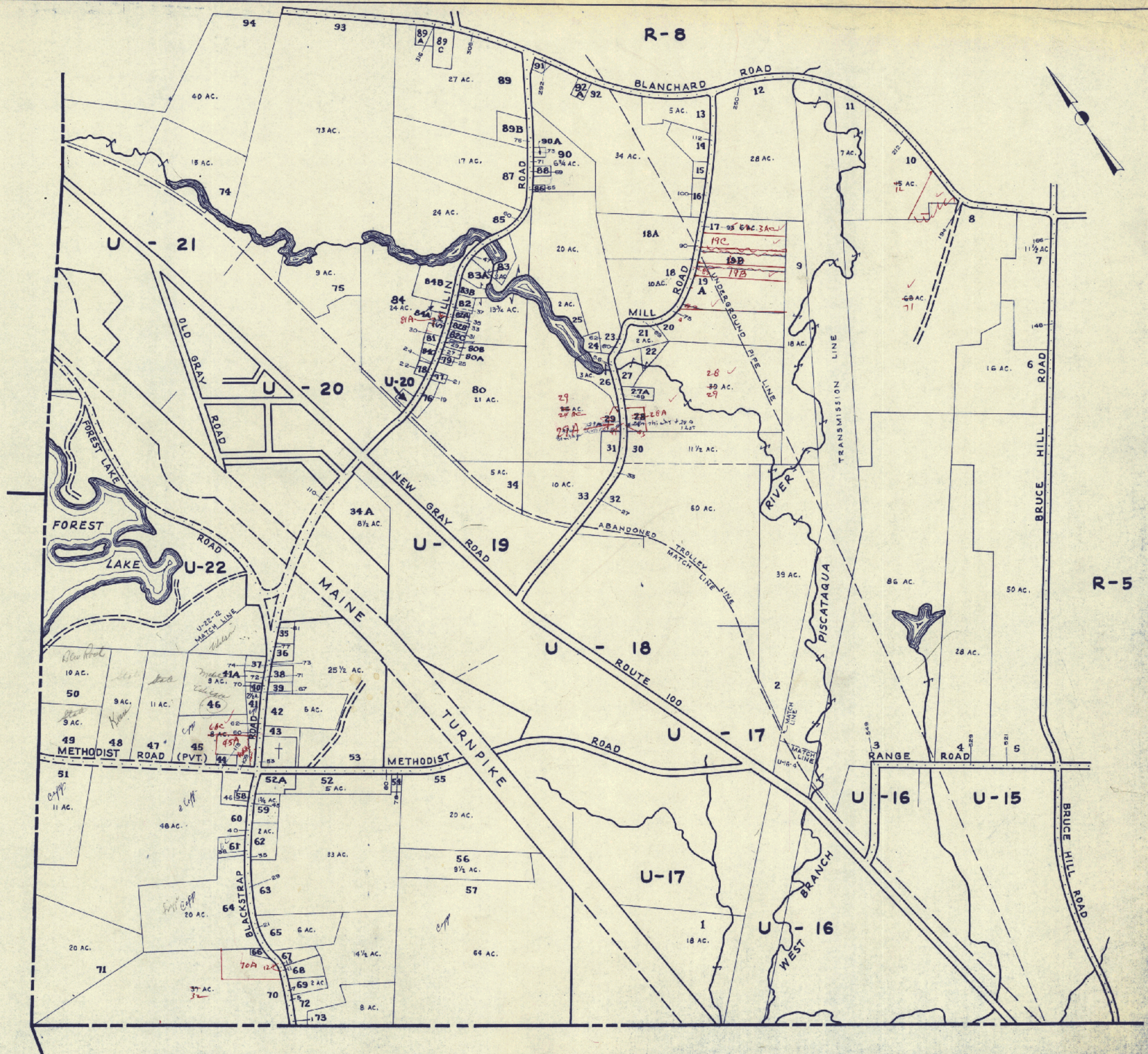
REVISED & REPRINTED
JOHN E. O'DONNELL AND ASSOCIATES
AUBURN, MAINE

NO PARCEL #11

PROPERTY MAP
CUMBERLAND, MAINE R-6
APRIL 1, 1971 SCALE: 1"=500'

GRAY

WINDHAM



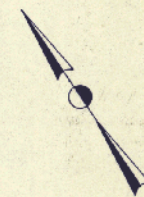
FALMOUTH

Revised to April 1, 1970.
JOHN E. O'DONNELL & ASSOCIATES
Auburn, Maine

PROPERTY MAP
CUMBERLAND, MAINE
APRIL 1, 1970
SCALE: 1"=500'

R-7

NORTH YARMOUTH



GRAY

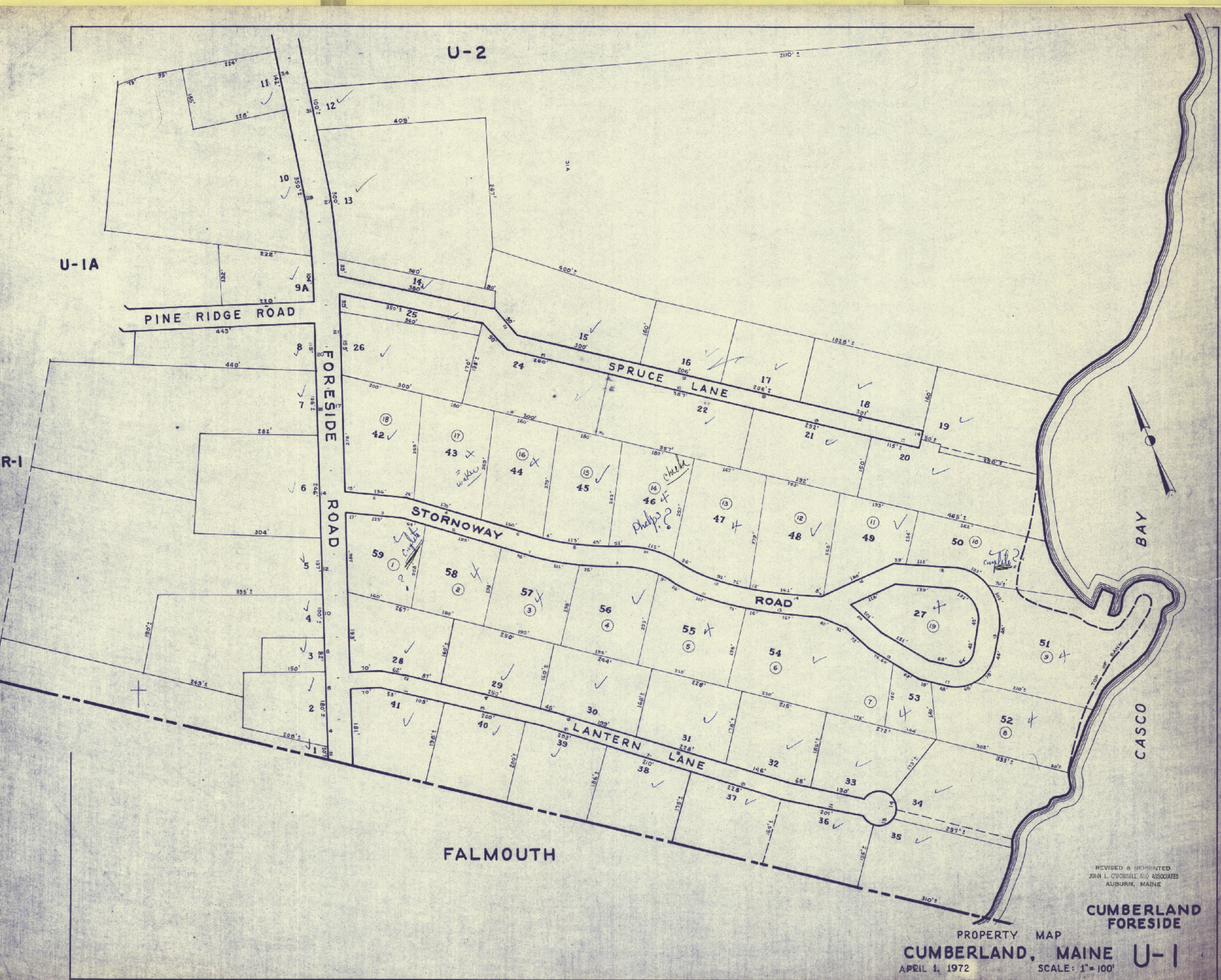


R-6

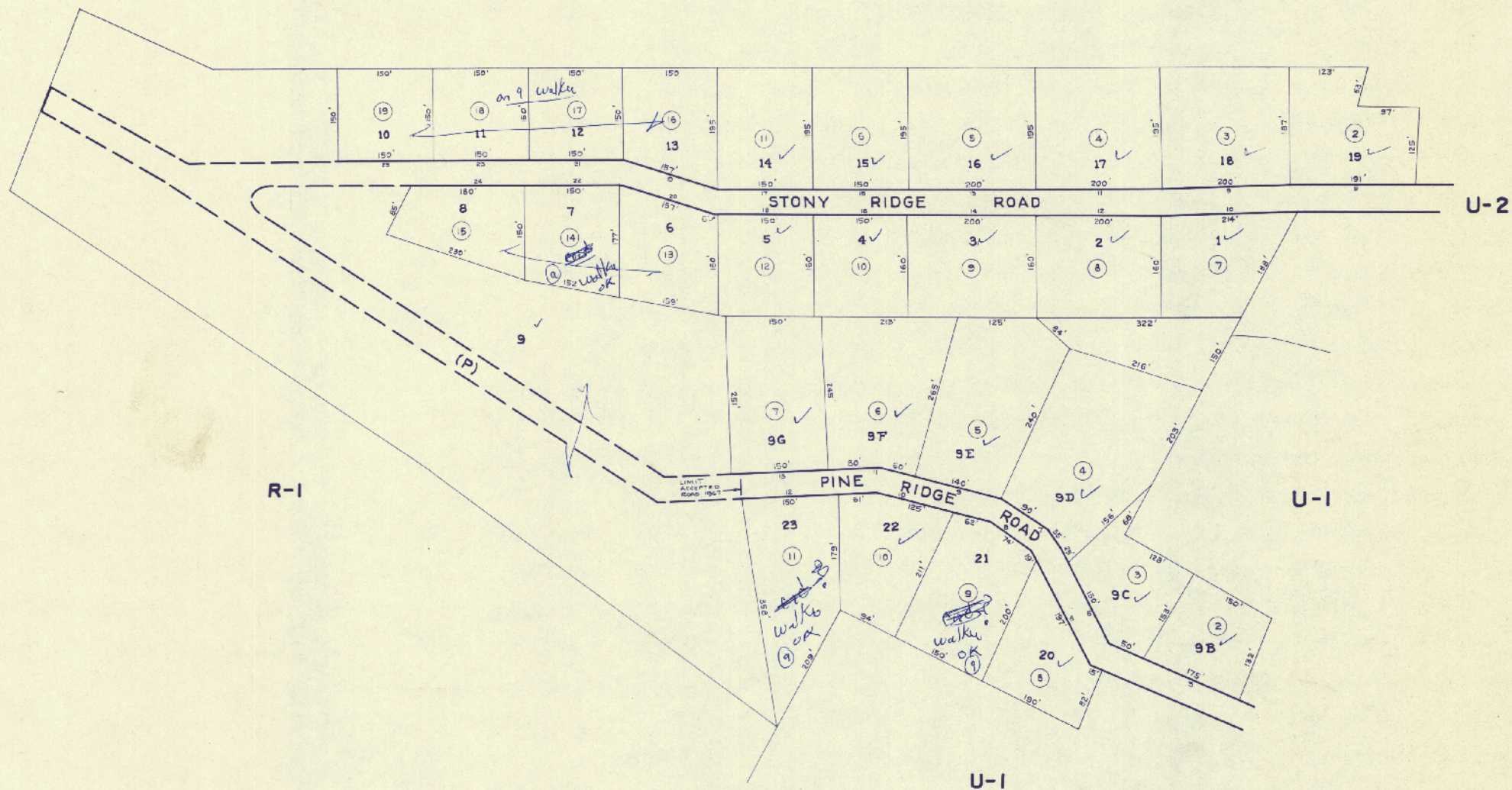
R-7

REVISED & REPRINTED
JOHN F. O'DONNELL AND ASSOCIATES
AUBURN, MAINE

PROPERTY MAP
CUMBERLAND, MAINE R-8
APRIL 1, 1971 SCALE: 1"=500'



R-1



REVISED & REPRINTED
JOHN E. O'DONNELL AND ASSOCIATES
AUBURN, MAINE

CUMBERLAND
FORESIDE

PROPERTY MAP

CUMBERLAND, MAINE U-1A

APRIL 1, 1972

SCALE: 1" = 100'

U-3



R-1

U-1A

U-1

CASCO BAY

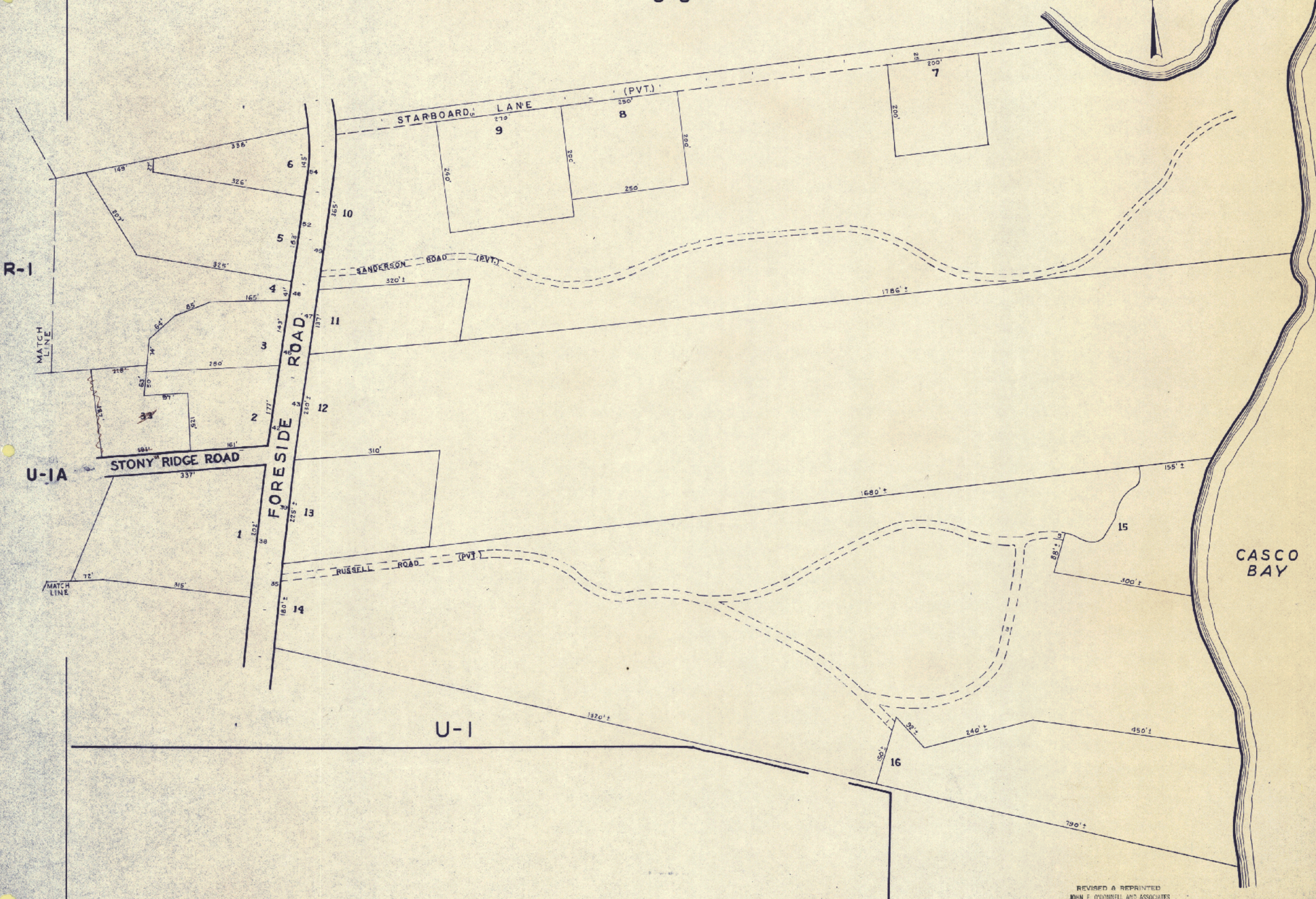
REVISED & REPRINTED
JOHN E. O'DONNELL AND ASSOCIATES
AUBURN, MAINE

PROPERTY MAP
CUMBERLAND, MAINE
APRIL 1, 1971

SCALE: 1"=100'

CUMBERLAND FORESIDE

U-2



U-3



R-1

U-1A

U-1

CASCO BAY

CUMBERLAND
FORESIDE

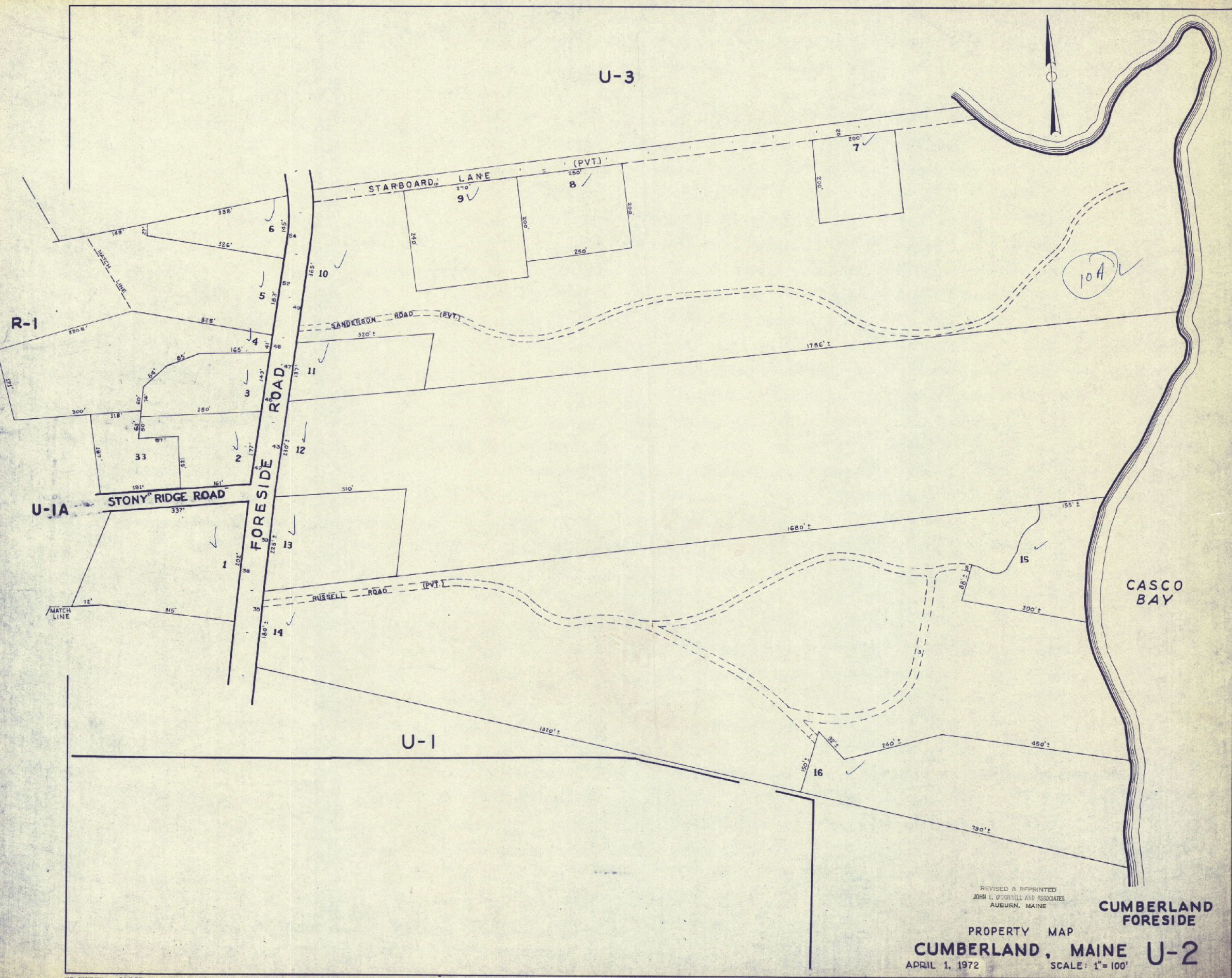
REVISED & REPRINTED
JOHN L. O'DONNELL AND ASSOCIATES
AUBURN, MAINE

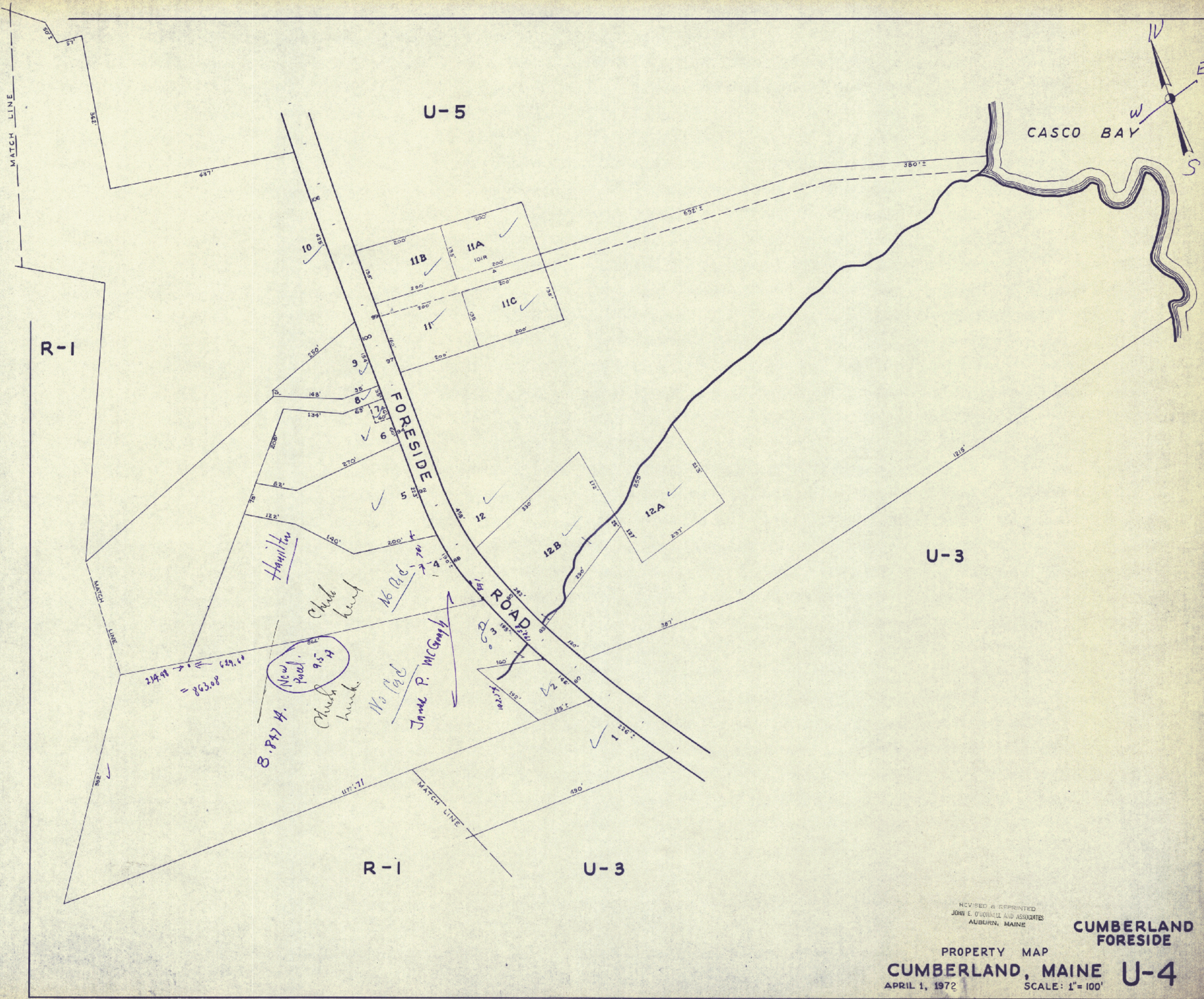
PROPERTY MAP

CUMBERLAND, MAINE
APRIL 1, 1972

SCALE: 1"=100'

U-2

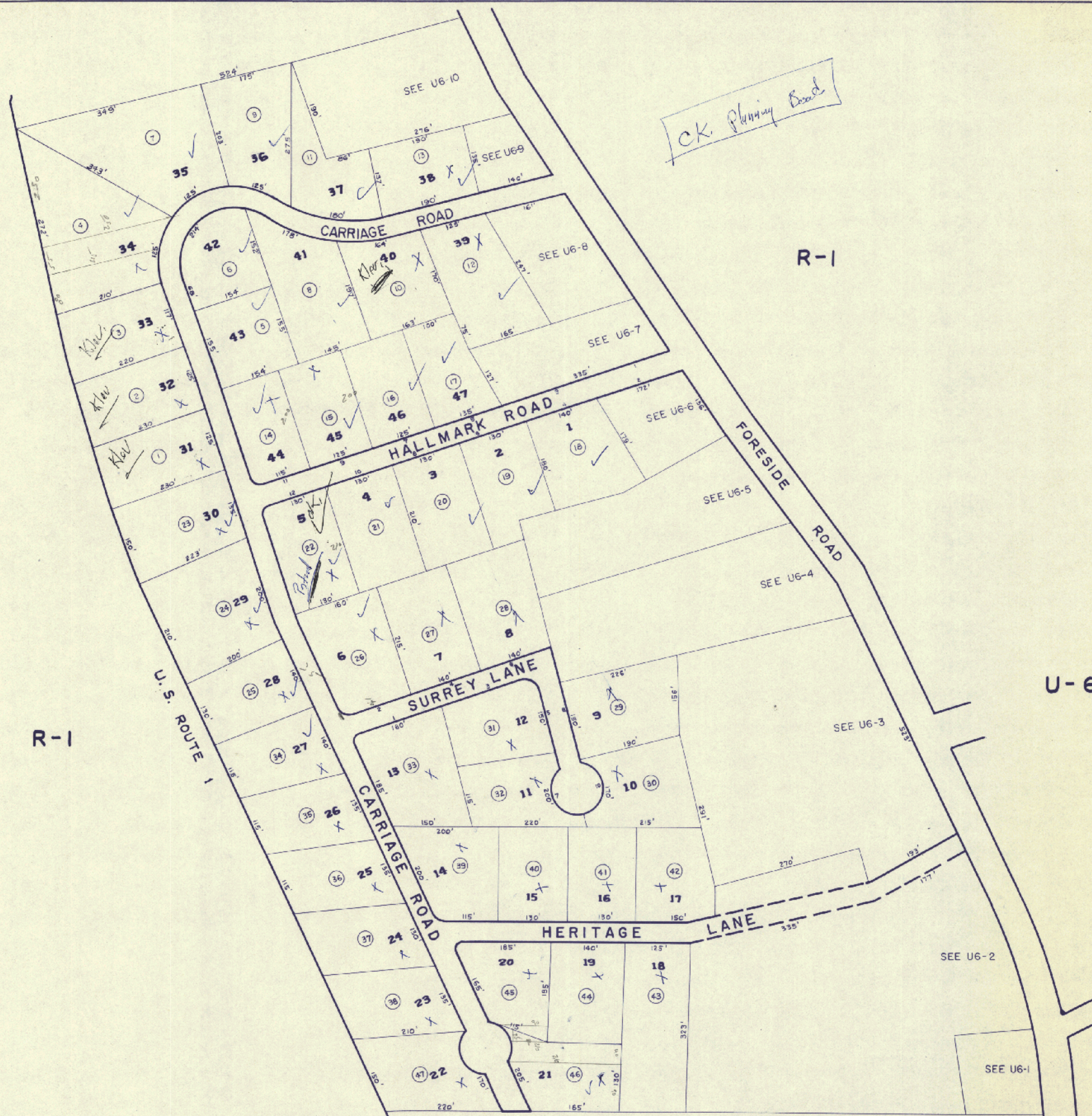




REVISED & REPRINTED
JOHN E. O'DONNELL AND ASSOCIATES
AUBURN, MAINE

CUMBERLAND
FORESIDE

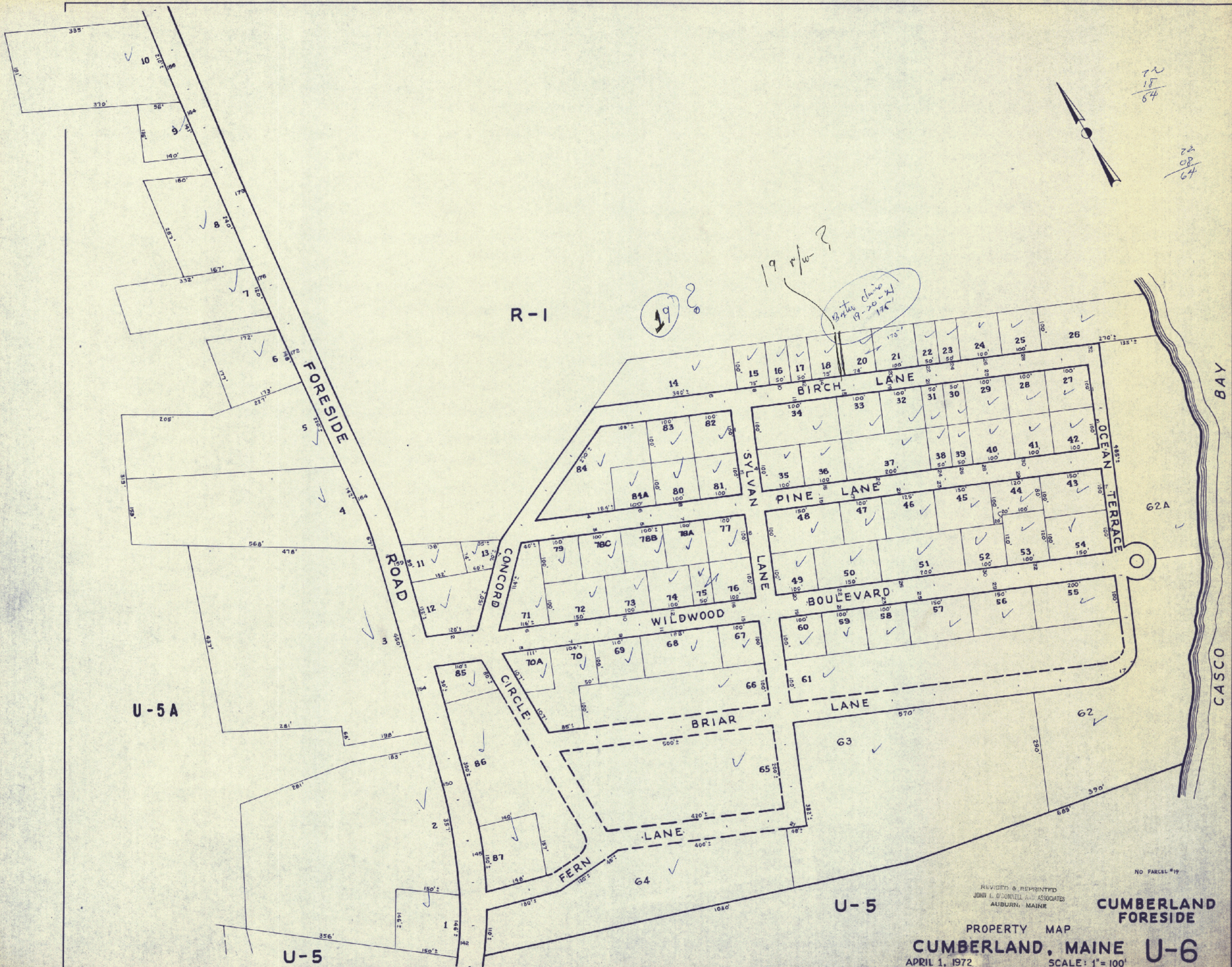
PROPERTY MAP
CUMBERLAND, MAINE U-4
APRIL 1, 1972 SCALE: 1"=100'



REVISED & REPRINTED
JOHN E. O'DONNELL AND ASSOCIATES
AUBURN, MAINE

CUMBERLAND
FORESIDE

PROPERTY MAP
CUMBERLAND, MAINE U-5A
APRIL 1, 1972 SCALE: 1"=100'



72
15
64

72
08
64

19 r/w?

Water claim
19-20-21
176'

62A

CASCO BAY

NO PARCEL #19

REVISED & REPRINTED
JOHN L. O'CONNELL & ASSOCIATES
AUBURN, MAINE

CUMBERLAND
FORESIDE

PROPERTY MAP

CUMBERLAND, MAINE

APRIL 1, 1972

SCALE: 1" = 100'

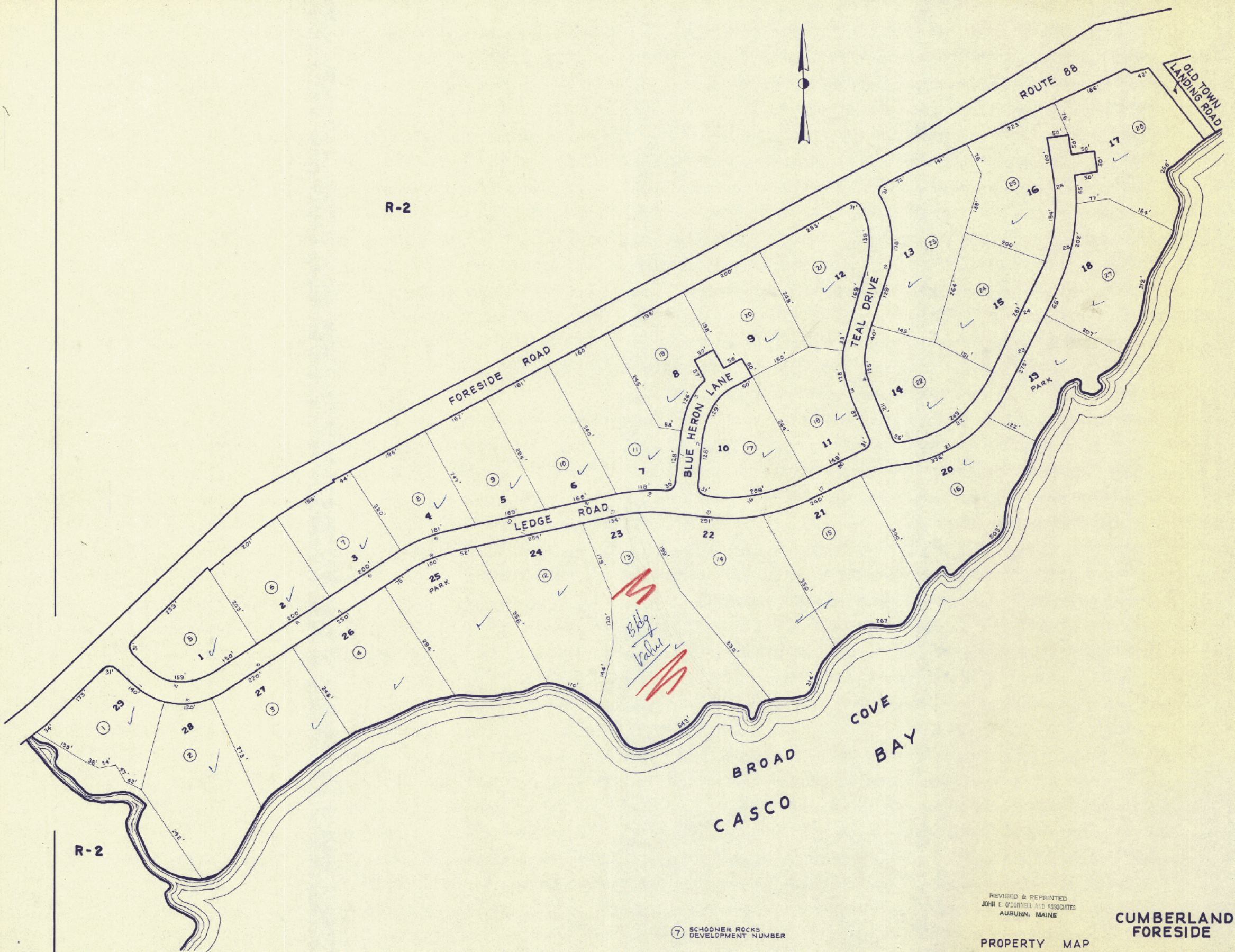
U-6

U-5

U-5

U-5A

R-1



R-2

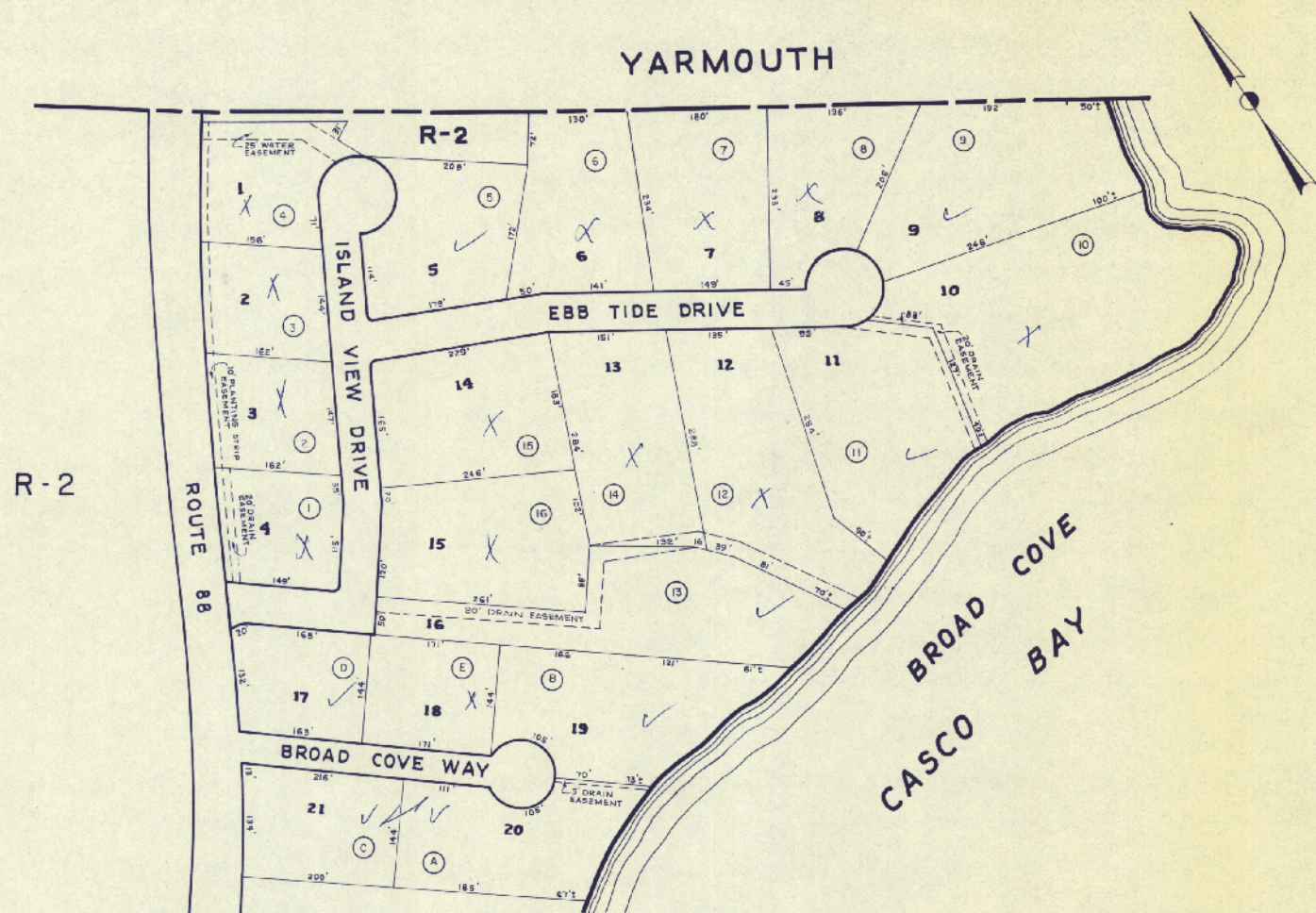
R-2

⑦ SCHOONER ROCKS
DEVELOPMENT NUMBER

REVISED & REPRINTED
JOHN E. O'CONNELL AND ASSOCIATES
AUBURN, MAINE

CUMBERLAND
FORESIDE

PROPERTY MAP
CUMBERLAND, MAINE U-6A
APRIL 1, 1972 SCALE: 1"=100'



R-2

(16) DEVELOPMENT NUMBER

REVISED & REPRINTED
JOHN E. O'DONNELL AND ASSOCIATES
AUBURN, MAINE

CUMBERLAND
FORESIDE

PROPERTY MAP
CUMBERLAND, MAINE U-6B
APRIL 1, 1972 SCALE: 1" = 100'

U-12

U-13

R-6

U-12

R-5

U-10

U-10

U-11

BLANCHARD RD.

TUTTLE ROAD

MEADOW VIEW ROAD

BROADMOOR DRIVE

WILLOW LANE

MAIN STREET

MAIN STREET

470
161
303
122
122

REVISED & REPRINTED
JOHN S. O'DONNELL AND ASSOCIATES
AUBURN, MAINE

CUMBERLAND
CENTER

PROPERTY MAP

CUMBERLAND, MAINE
APRIL 1, 1972

SCALE: 1" = 100'

GREENLY ROAD

MAIN STREET

BROOKSIDE DRIVE

HEDGE ROW DRIVE

HILLCREST DRIVE

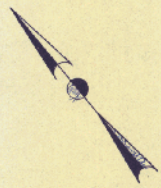
WOODSIDE DRIVE

CAROL STREET

LINDA STREET

LONGVIEW STREET

VERRILL PLACE (PVT.)



R-6

REVISED & REPRINTED
JOHN E. O'DONNELL AND ASSOCIATES
AUBURN, MAINE

CUMBERLAND
CENTER
PROPERTY MAP
CUMBERLAND
MAINE

APRIL 1, 1972 SCALE: 1"=100'

U-14

U-13