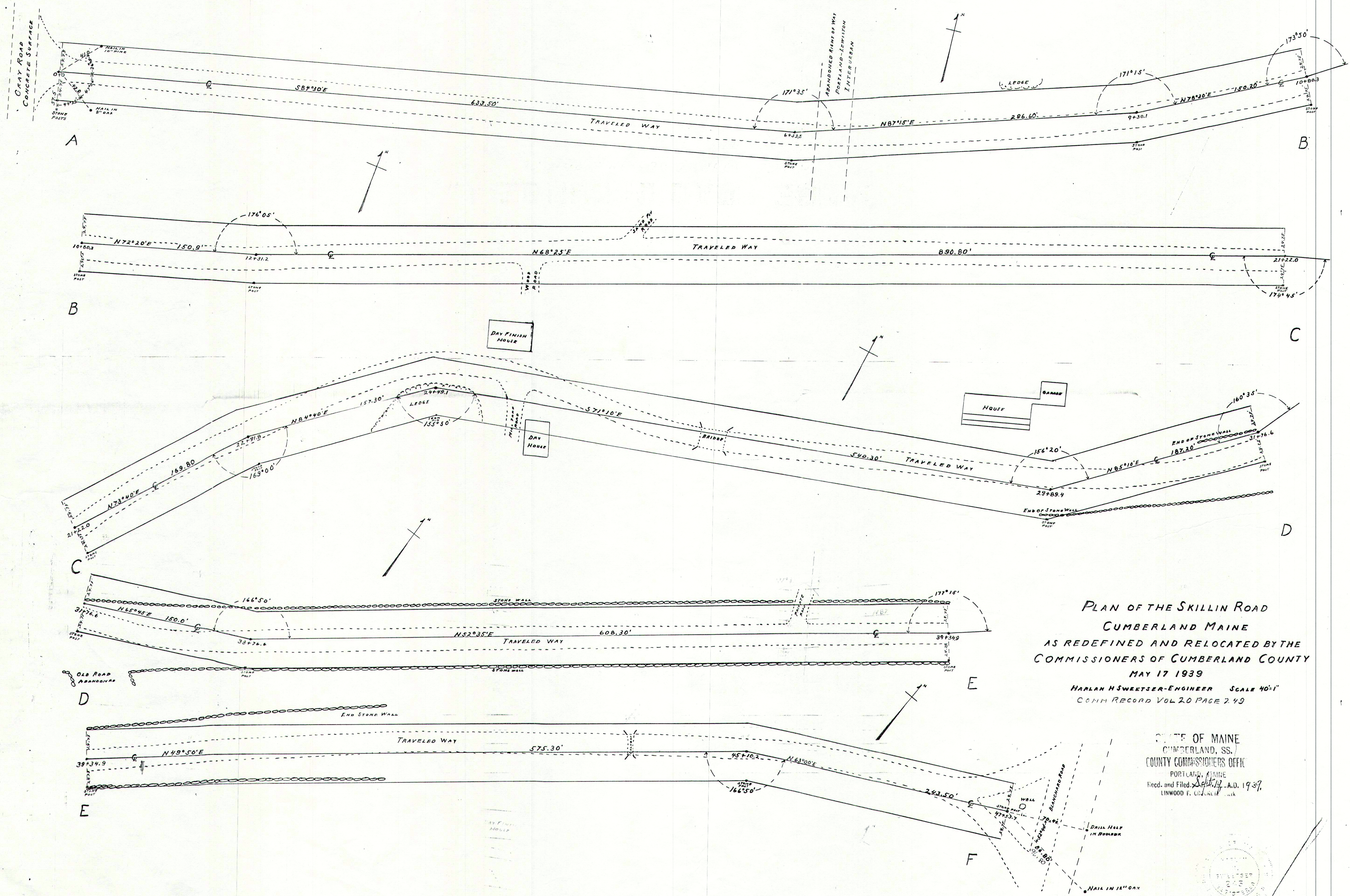
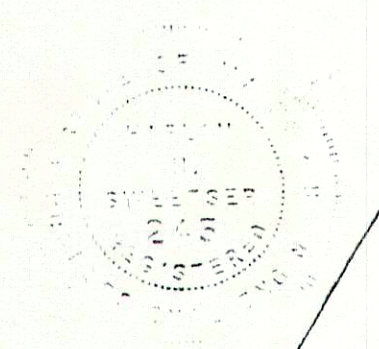


PB 5 57
RB 20 249



PLAN OF THE SKILLIN ROAD
CUMBERLAND MAINE
AS REDEFINED AND RELOCATED BY THE
COMMISSIONERS OF CUMBERLAND COUNTY
MAY 17 1939
HARLAN H SWERTZER-ENGINEER SCALE 40'-1"
CONH RECORD VOL 20 PAGE 249

STATE OF MAINE
CUMBERLAND, SS.
COUNTY COMMISSIONERS OFFICE
PORTLAND, MAINE
Recd. and Filed Sept 17 A.D. 1939
LINWOOD F. CHASE, CLERK



Skillin Rd