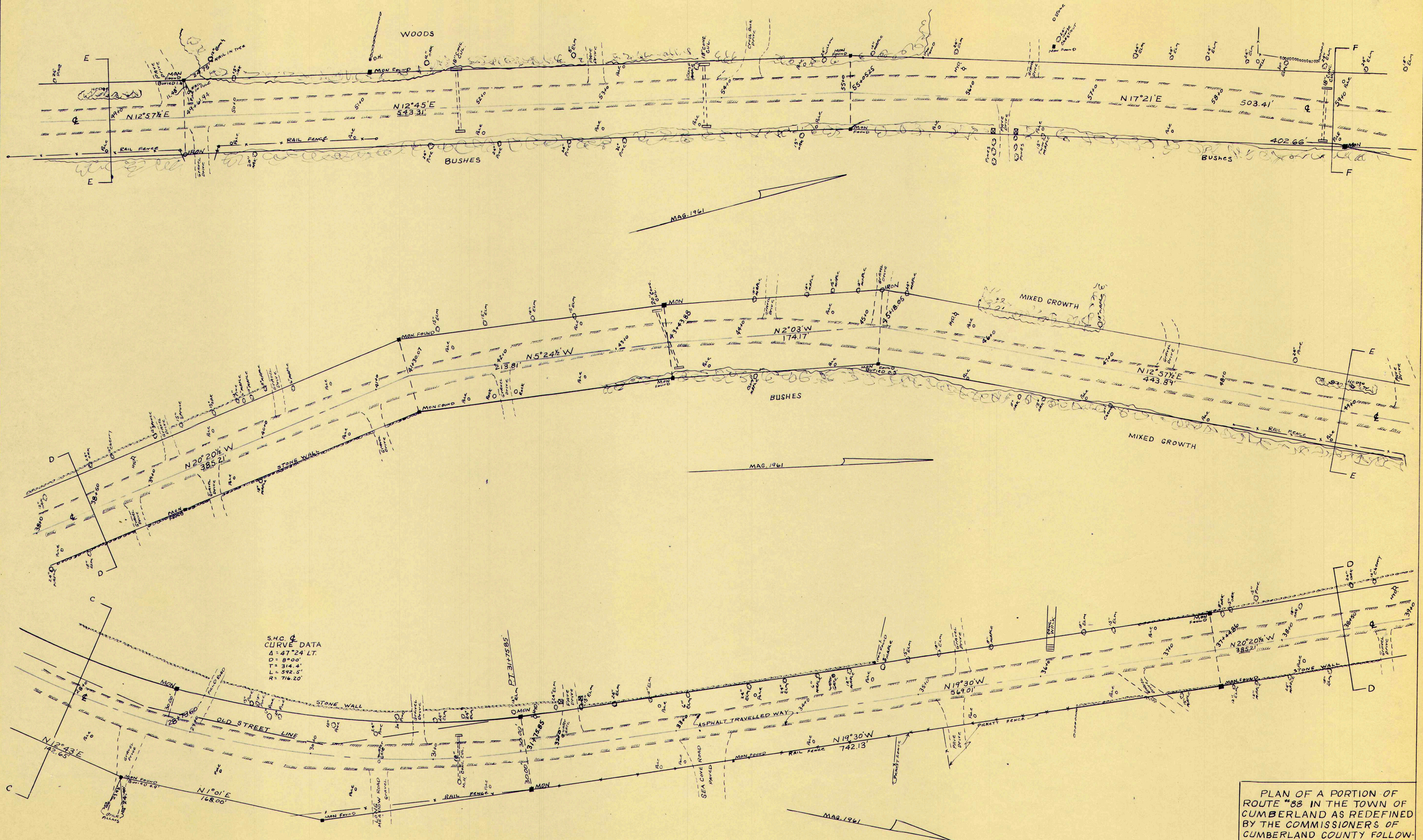


PLAN OF A PORTION OF ROUTE "88" IN THE TOWN OF CUMBERLAND AS REDEFINED BY THE COMMISSIONERS OF CUMBERLAND COUNTY FOLLOWING HEARING ON SAME APRIL 21, 1961. SCALE ~ 1" = 40' H.H. SWEETSER H.I. & E.C. JORDAN SURVEYORS DIV. OF EDWARD C. JORDAN CO. INC. DECEMBER 18, 1962



PLAN OF A PORTION OF
 ROUTE #88 IN THE TOWN OF
 CUMBERLAND AS REDEFINED
 BY THE COMMISSIONERS OF
 CUMBERLAND COUNTY FOLLOW-
 ING HEARING ON SAME
 APRIL 21, 1961. SCALE ~ 1" = 40'
 H.H. SWEETSER
 H.I. & E.C. JORDAN SURVEYORS
 DIV. OF EDWARD C. JORDAN CO., INC.
 DECEMBER 18, 1962

