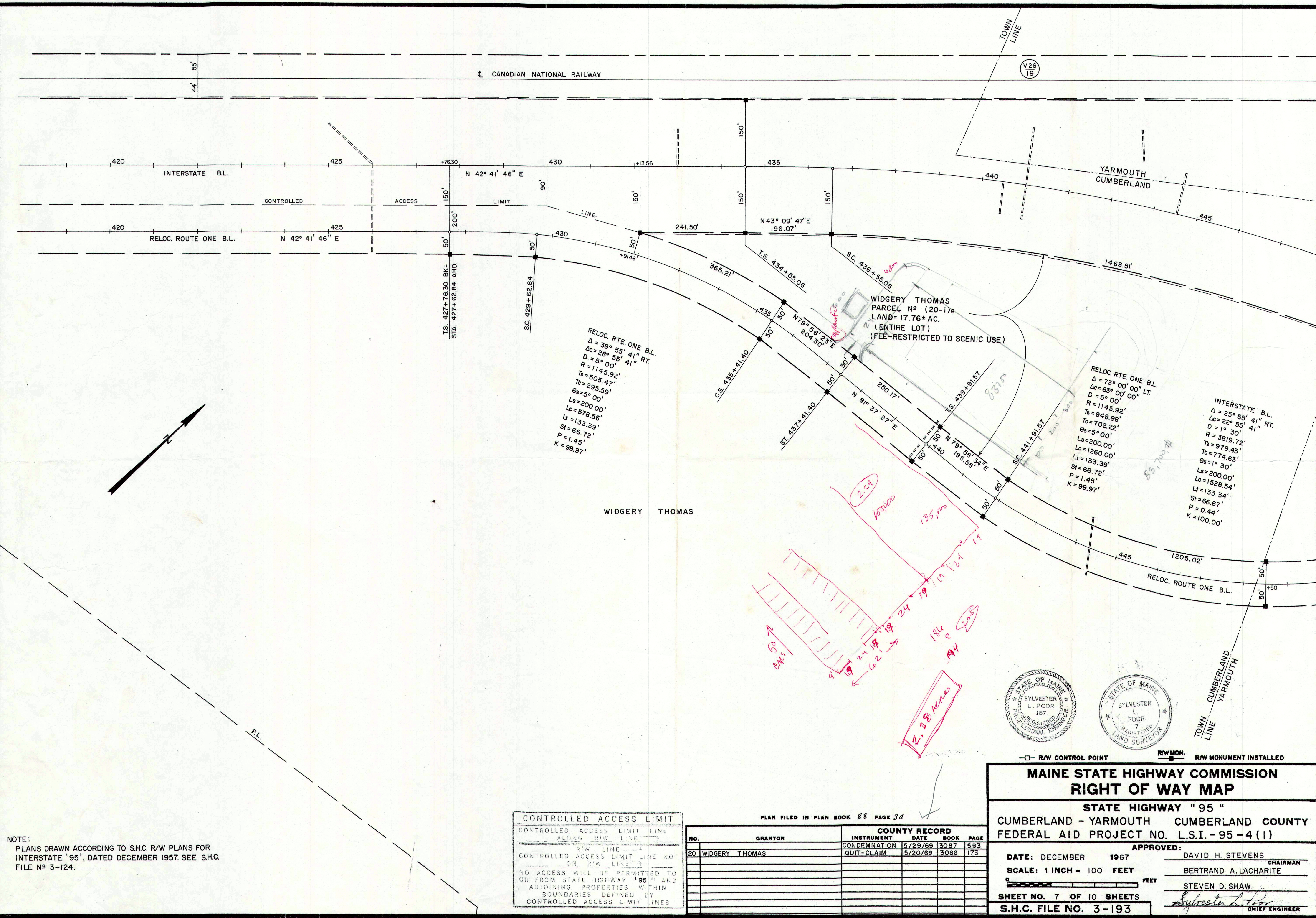


REVISIONS		NO.	DATE	DESCRIPTION	BY
1					
2					
3					
4					
5					

ITEM	MEASURED	PLOTTED	CHECKED
BASE LINES			
R/W LINES			
AREAS			
R/W MON.			
CO. RECORD			



2" interval

Submit by
May 4th
April 28th

1845
Site Plan Review

Set Backs
Front 25'
Rear 65'
Side 25'

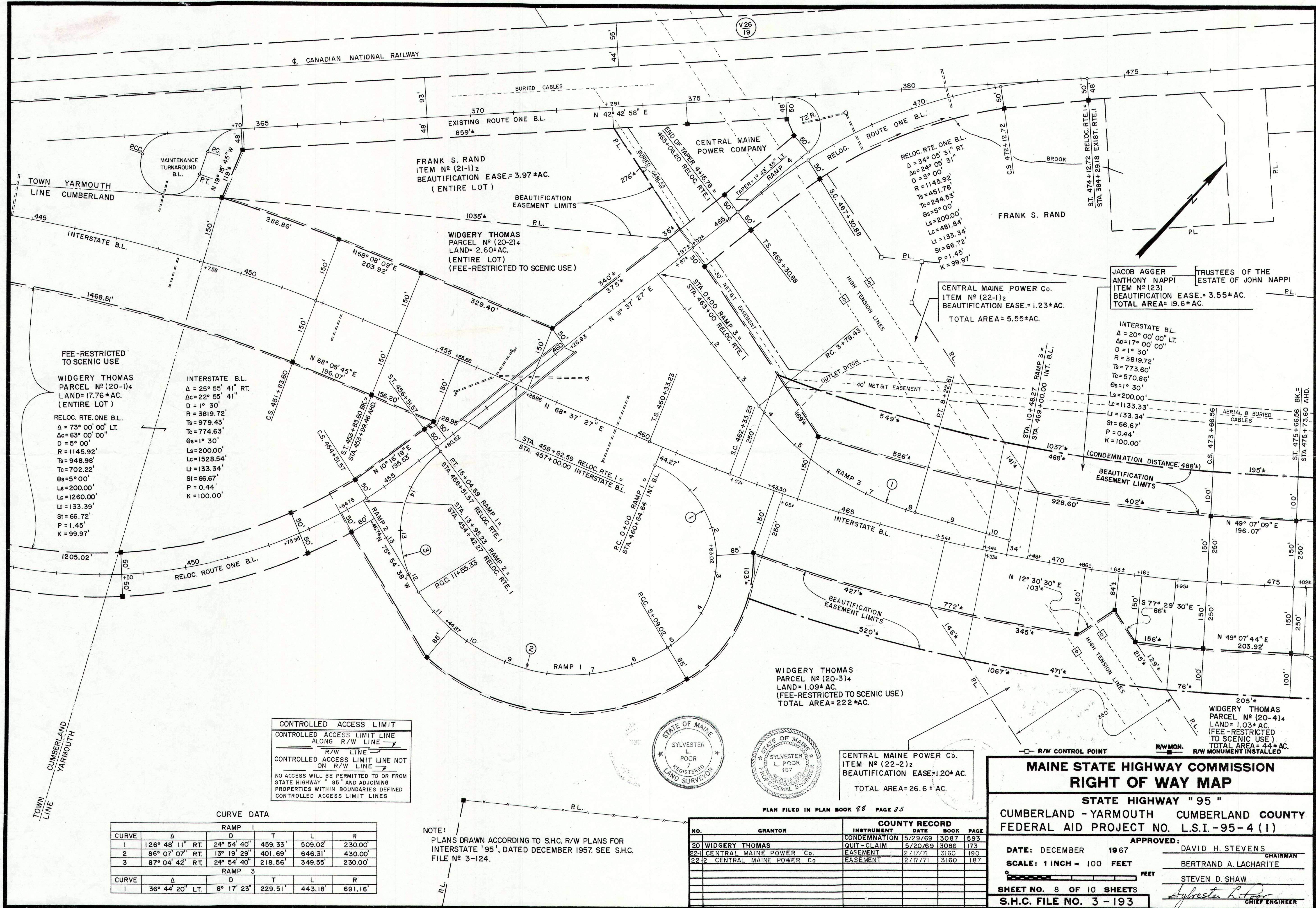
Special Exemption

Zone:
Office
Commercial

H2O & Elec
for Bore &
Sewer
Facility

R240

ITEM	FIGURED	PLOTTED	CHECKED	REVISIONS		BY
				NO.	DATE	
BASE LINE				1		
TOPOGRAPHY				2		
R/W LINES				3		
AREAS				4		
R/W MON.				5		
CO. RECORD						



I-295 Ext 15 2-2