

GREELY WOODS

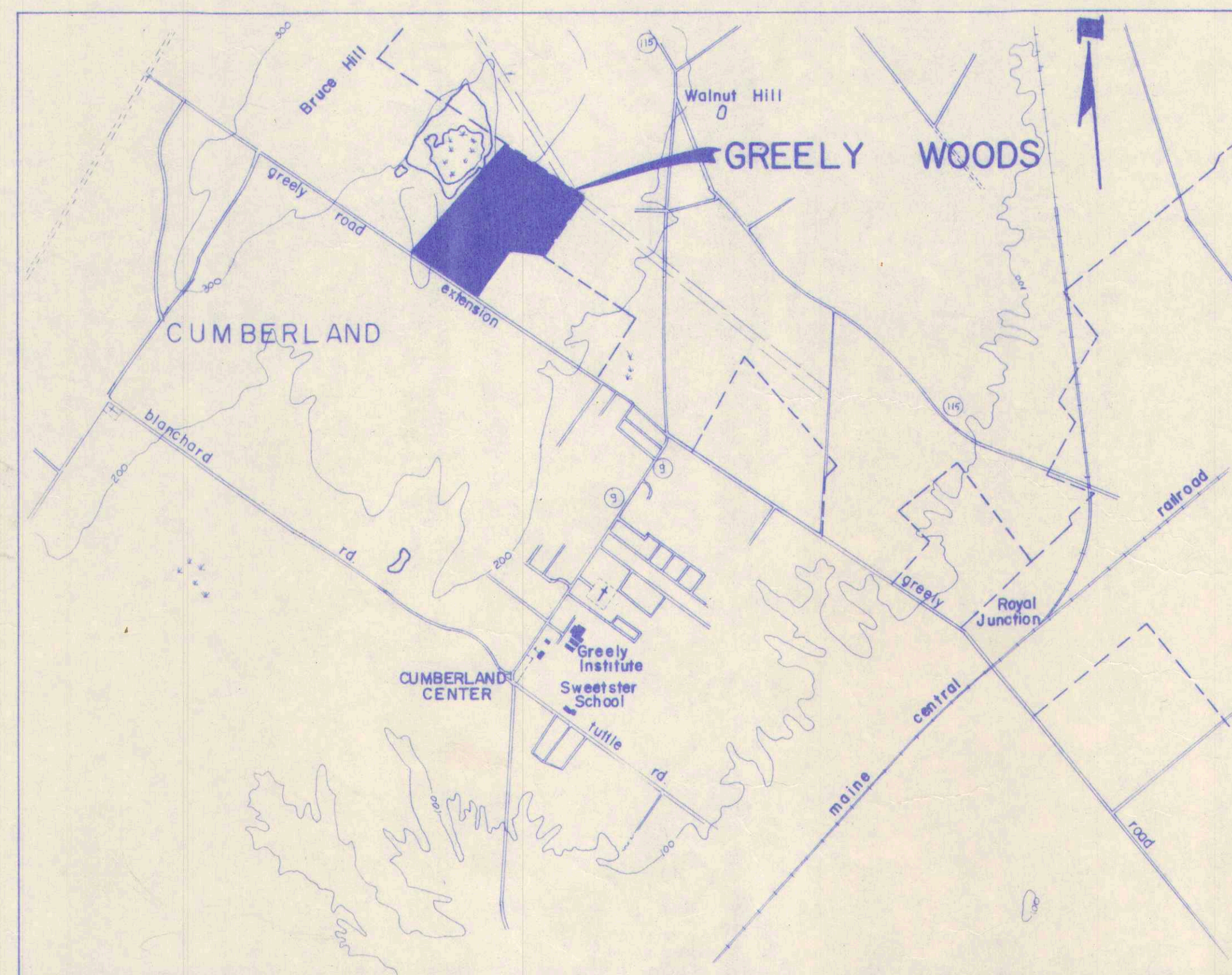
REY-GARD INC.

CUMBERLAND, MAINE

JANUARY 1977

FINAL APPROVAL
BY CUMBERLAND, MAINE
PLANNING BOARD

DATED _____



SCALE 1"=24000
1000 0 1000 2000 3000 4000 5000 6000 7000 feet

LOCUS



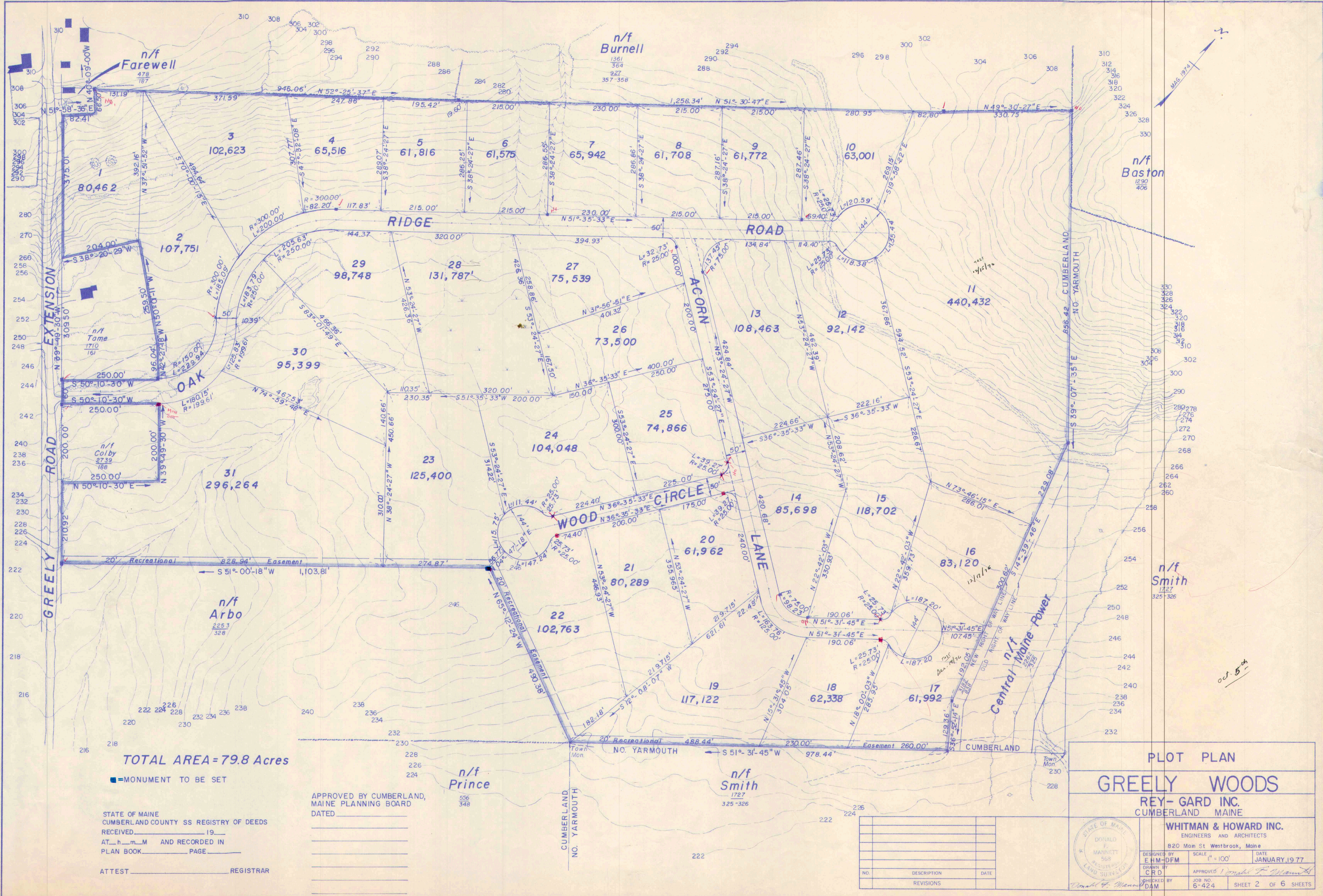
Whitman & Howard Inc.
Engineers & Architects
Westbrook, Maine



Donald G. Munn *Edwin H. MacArthur*

GREELY Woods

SHEET 1 OF 6



TOTAL AREA = 79.8 Acres

■ = MONUMENT TO BE SET

STATE OF MAINE
CUMBERLAND COUNTY SS. REGISTRY OF DEEDS
RECEIVED _____ 19____
AT _____ AND RECORDED IN
PLAN BOOK _____ PAGE _____

ATTEST _____ REGISTRAR

APPROVED BY CUMBERLAND,
MAINE PLANNING BOARD
DATED _____

n/f Prince
556
348

n/f Smith
1727
325-326

PLOT PLAN

GREELY WOODS

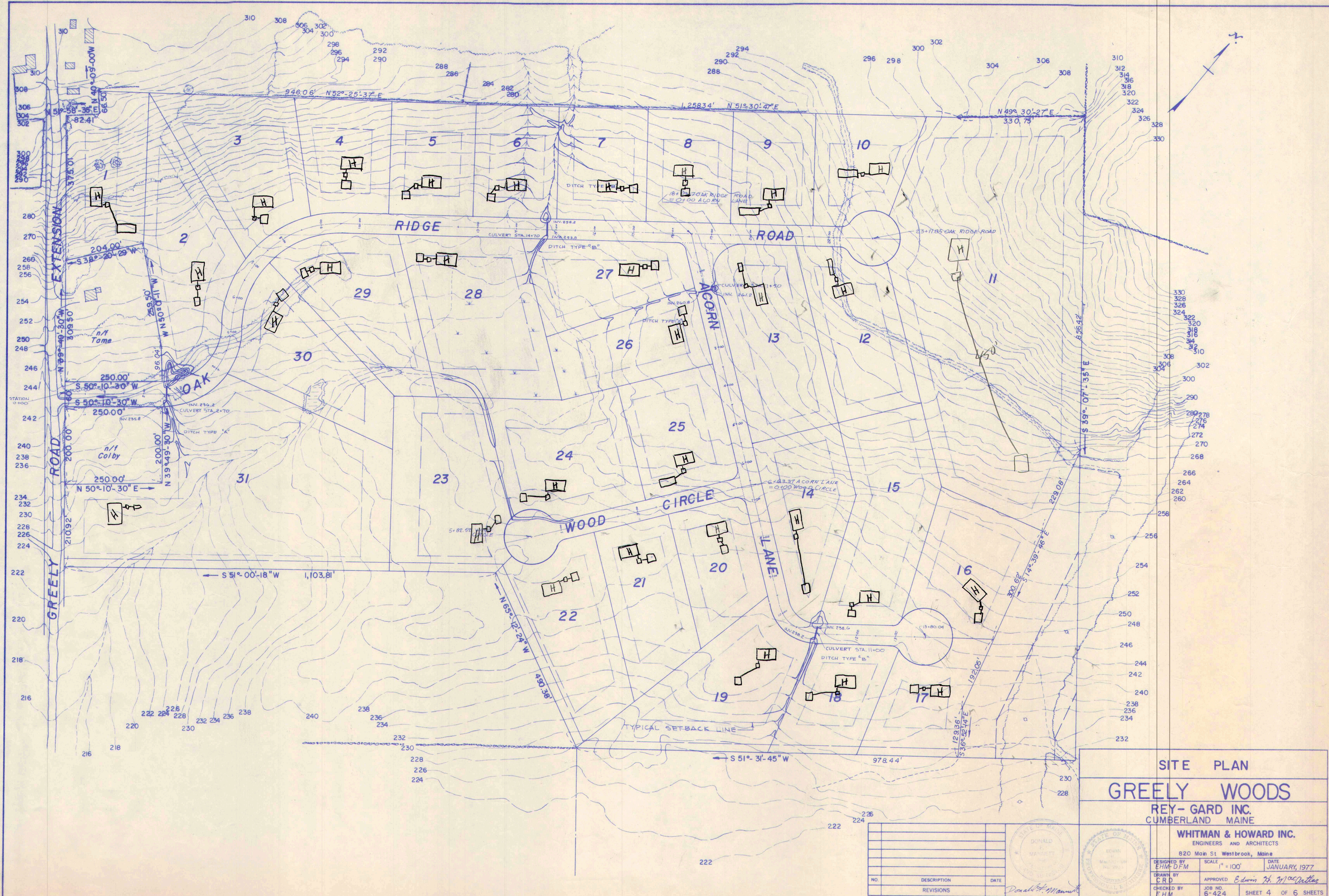
REY-GARD INC.
CUMBERLAND MAINE

STATE OF MAINE
DONALD F. MANNETT
REGISTERED
LAND SURVEYOR

DESIGNED BY
EHM-DFM
DRAWN BY
CRD
CHECKED BY
DAM

SCALE
1" = 100'
APPROVED
JANUARY 1977
JOB NO.
6-424
SHEET 2 OF 6 SHEETS

WHITMAN & HOWARD INC.
ENGINEERS AND ARCHITECTS
820 Main St. Westbrook, Maine

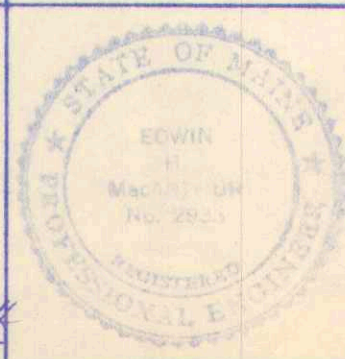
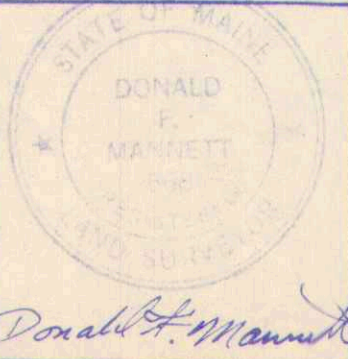


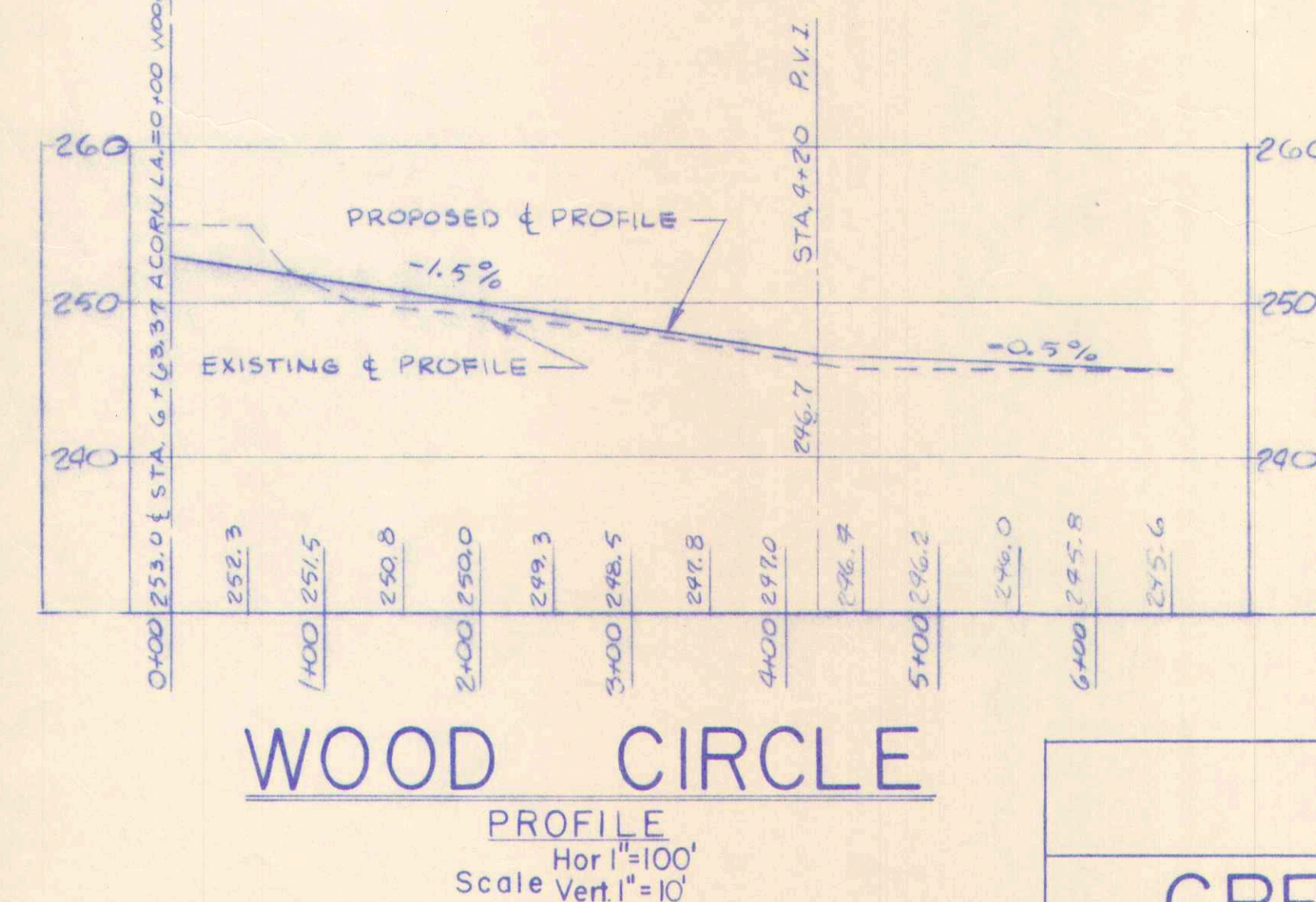
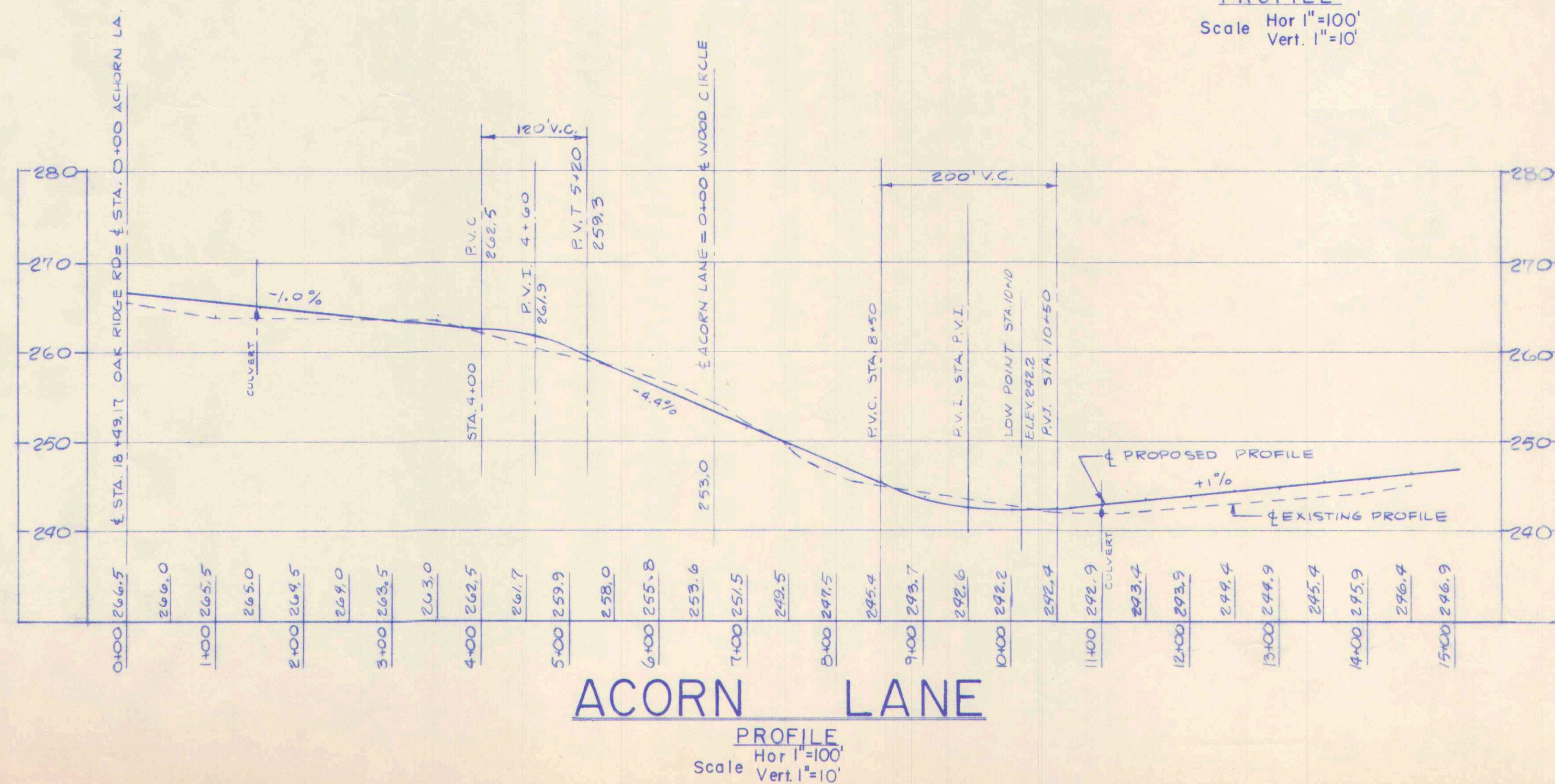
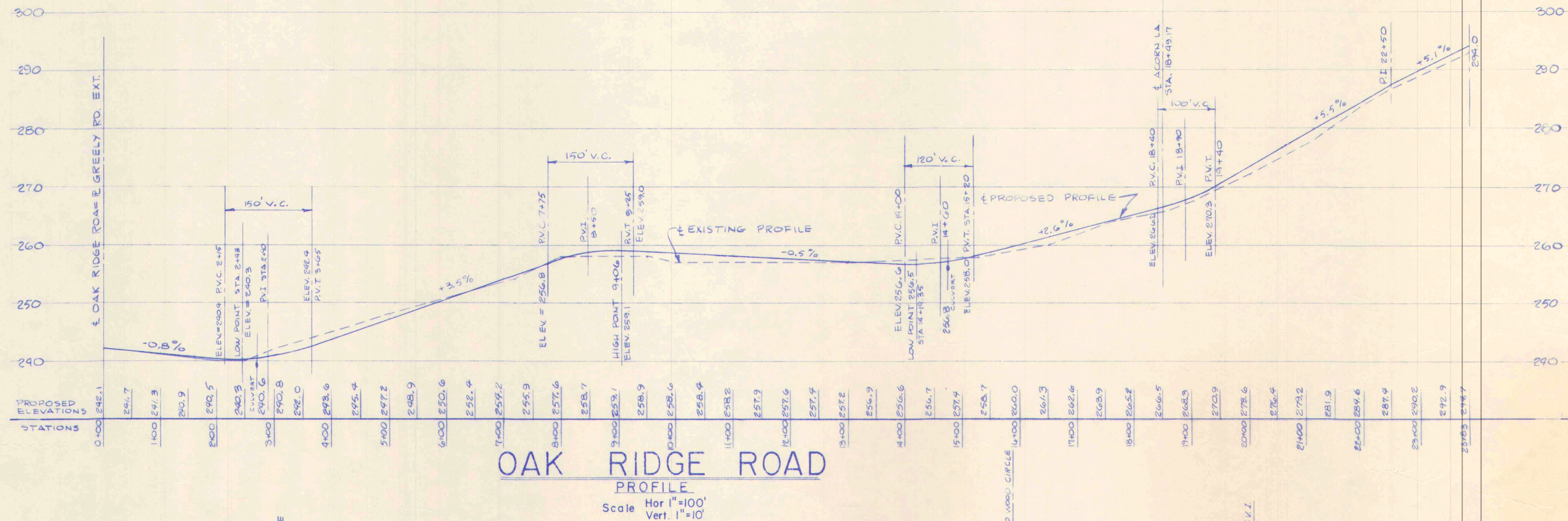
SITE PLAN
GREELY WOODS
 REY-GARD INC.
 CUMBERLAND MAINE

WHITMAN & HOWARD INC.
 ENGINEERS AND ARCHITECTS
 820 Main St. Westbrook, Maine

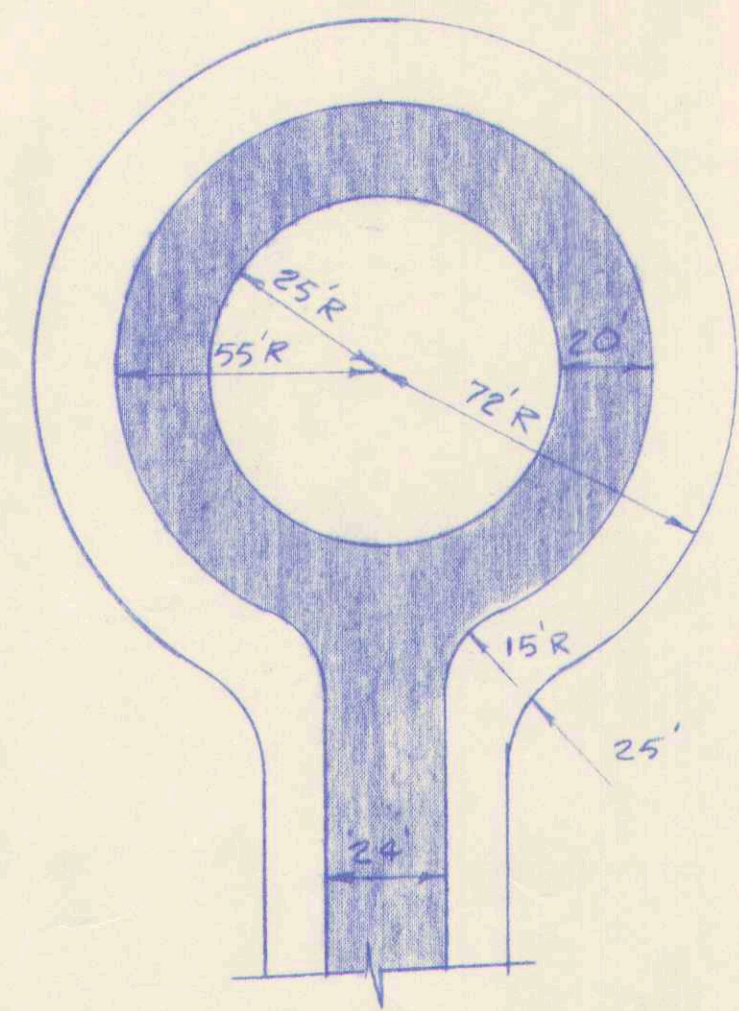
DESIGNED BY EHM-DFM	SCALE 1" = 100'	DATE JANUARY, 1977
DRAWN BY CRD	APPROVED <i>Edwin H. MacArthur</i>	
CHECKED BY EHM	JOB NO. 6-424	SHEET 4 OF 6 SHEETS

NO.	DESCRIPTION	DATE

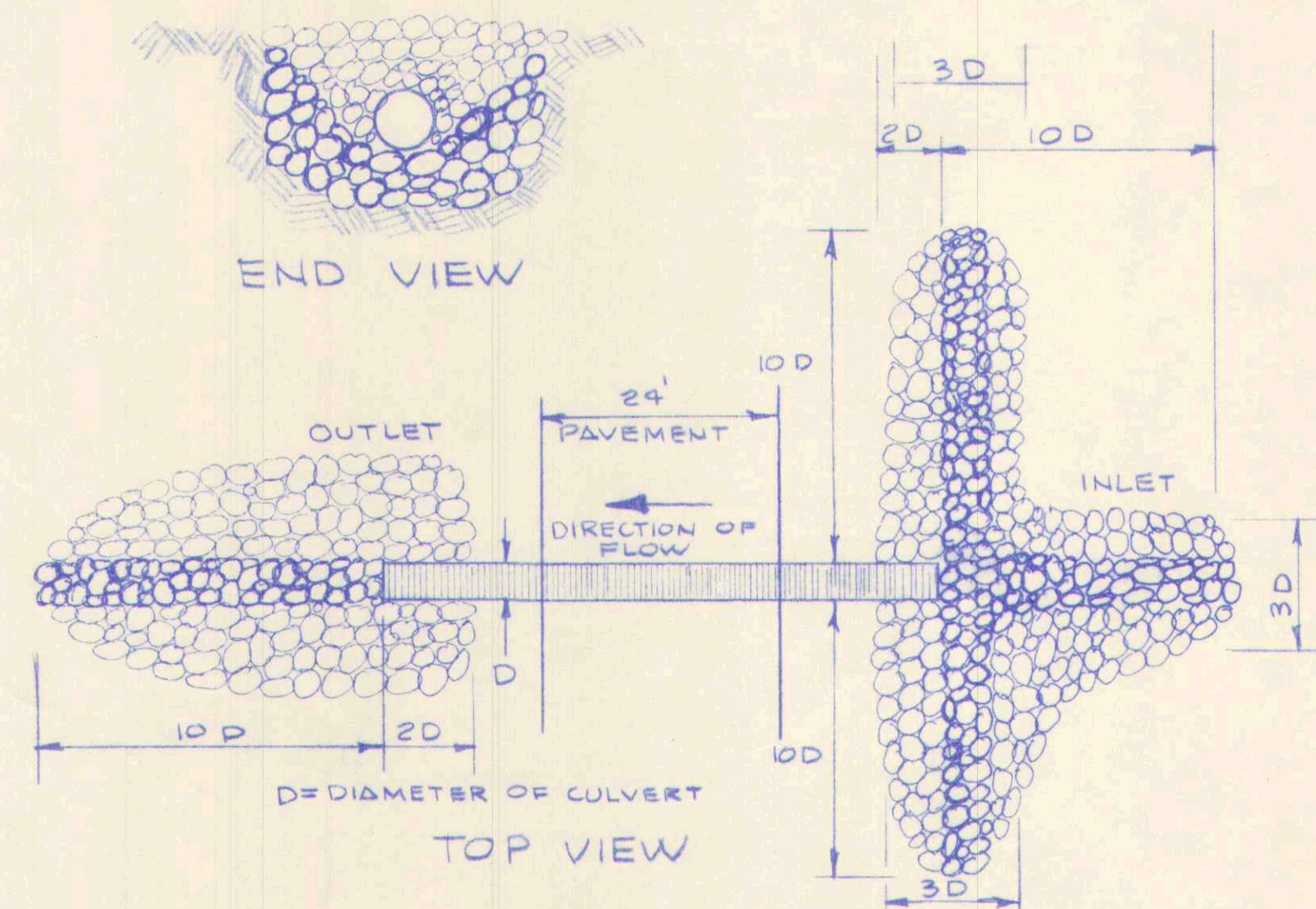




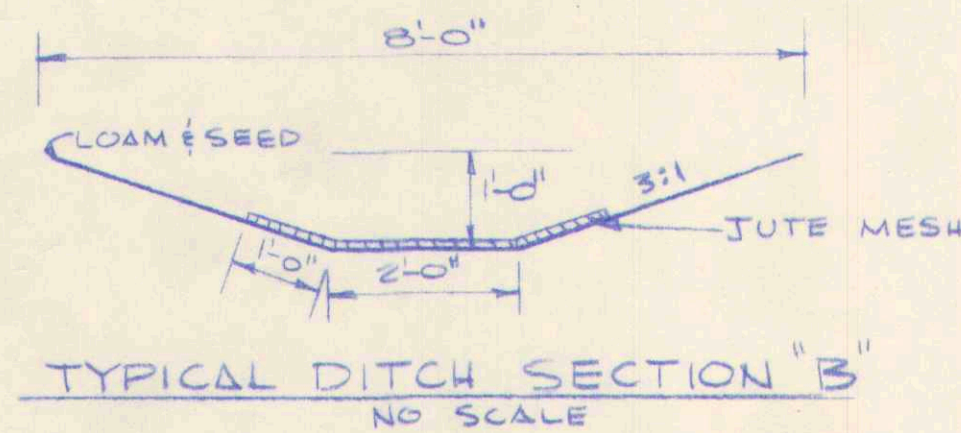
PROFILES			
GREELY WOODS			
REY- GARD INC.			
CUMBERLAND, MAINE			
WHITMAN & HOWARD INC.			
ENGINEERS AND ARCHITECTS			
820 Main St Westbrook, Maine			
DESIGNED BY	SCALE	AS NOTED	DATE
EHM			JANUARY 1977
DRAWN BY	CRD	APPROVED	<i>Edmund H. Whitman</i>
CHECKED BY	JOB NO.	6-424	SHEET 5 OF 6 SHEETS



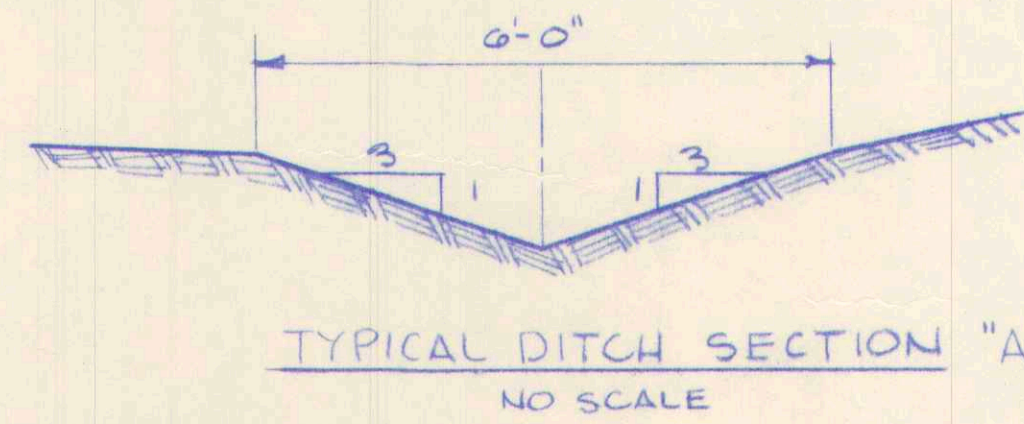
CUL-DE-SAC PAVING DETAIL
SCALE 1"=40'



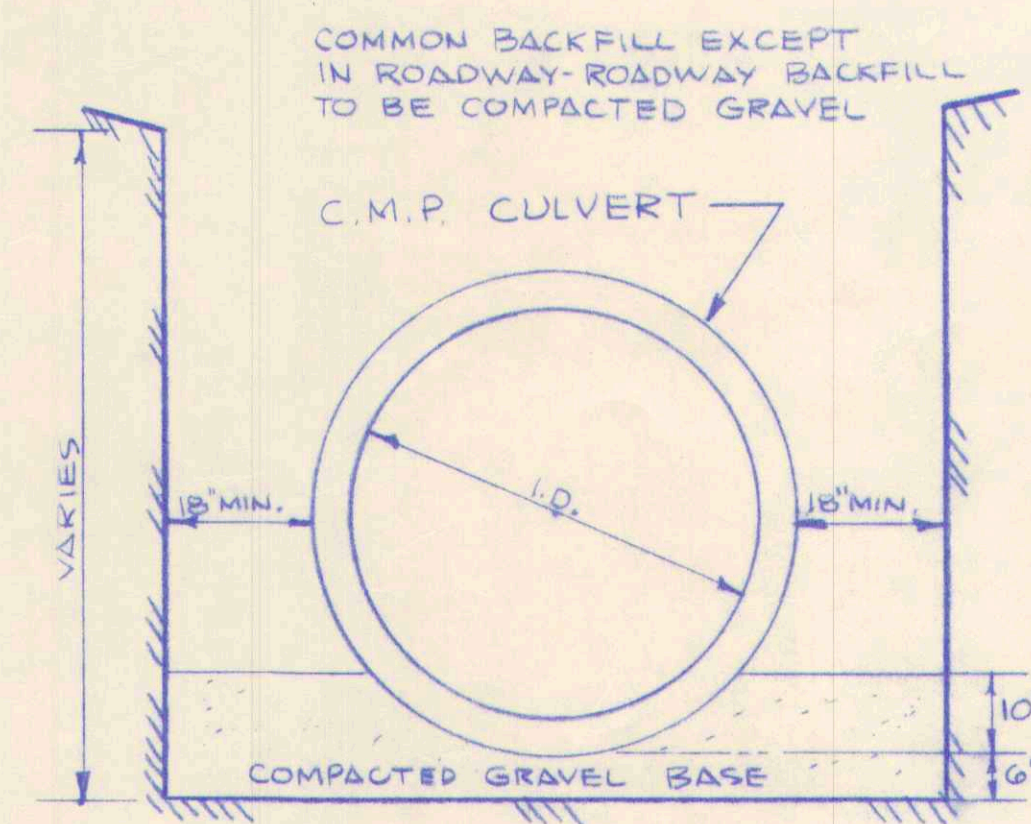
TYPICAL CULVERT RIP-RAP DETAIL
NO SCALE



TYPICAL DITCH SECTION "B"
NO SCALE



TYPICAL DITCH SECTION "A"
NO SCALE

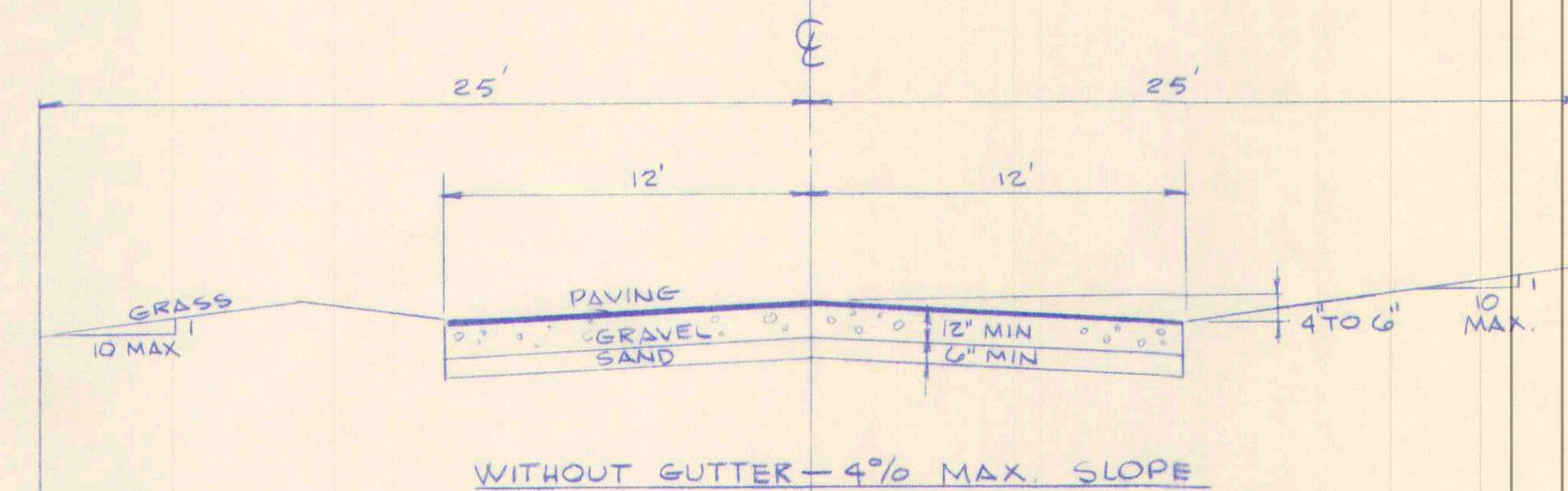


TRENCH DETAIL
NO SCALE

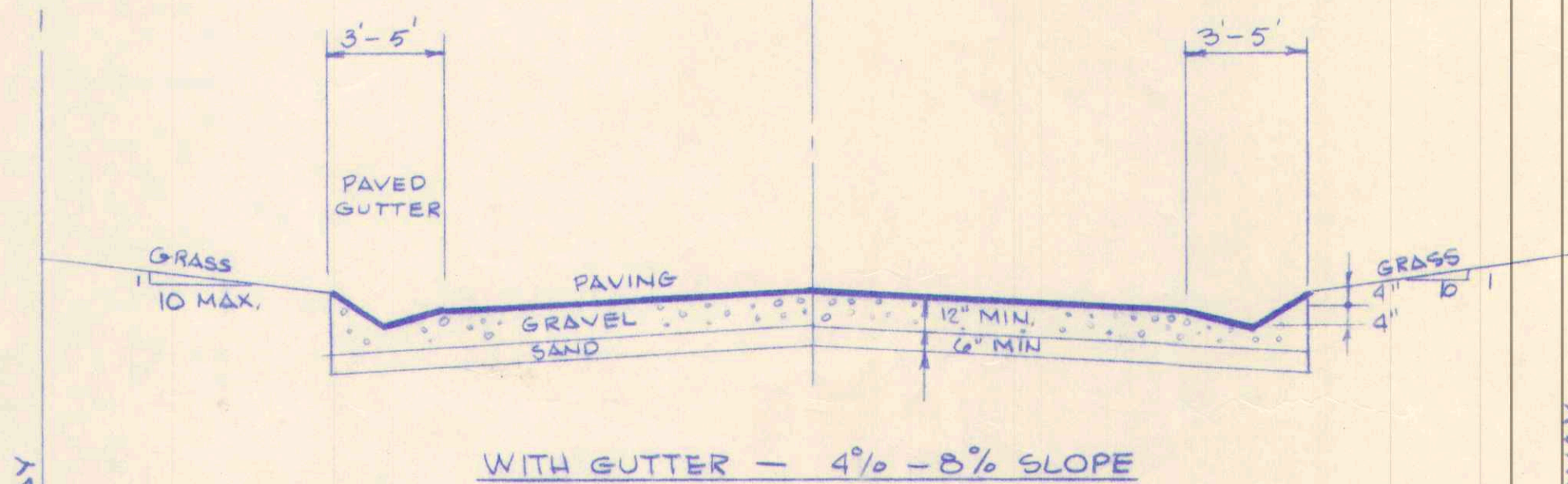
GENERAL STANDARDS

- A-PAVING SHALL BE A PENETRATION TREATMENT USING 0.6 GAL. ASPHALT OR TAR PER SQUARE YARD LIGHTLY SANDED.
- B-GRAVEL SHALL CONSIST OF HARD, DURABLE STONE AND WELL GRADED SAND IN TOP 2" OF GRAVEL SHALL PASS A 2" SIEVE.
- C-SAND FOR 6" SUB-BASE SHALL PASS A 1/4" SIEVE.

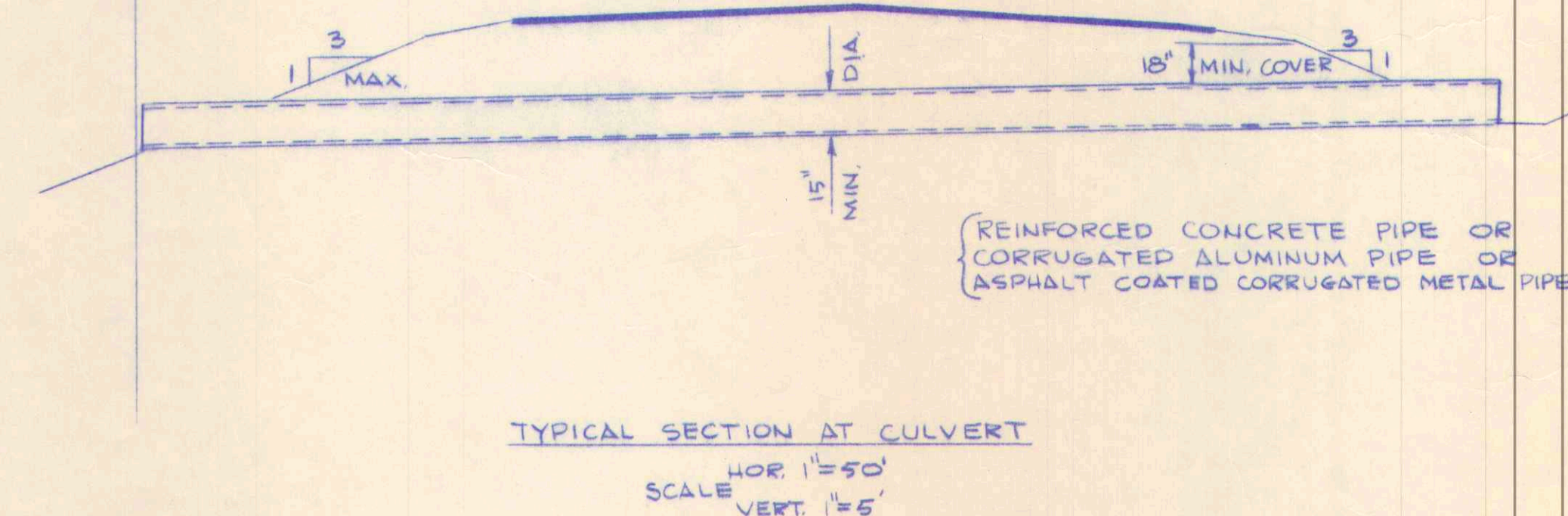
TYPICAL SECTIONS MINOR STREETS



WITHOUT GUTTER - 4% MAX. SLOPE



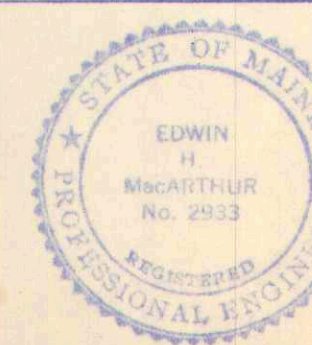
WITH GUTTER - 4% - 8% SLOPE



TYPICAL SECTION AT CULVERT
HOR. 1"=50'
SCALE VERT. 1"=5'

TYPICAL DETAILS
GREELY WOODS
REY-GARD INC.
CUMBERLAND MAINE

WHITMAN & HOWARD INC.
ENGINEERS AND ARCHITECTS
820 Main St. Westbrook, Maine



DESIGNED BY EHM
DRAWN BY CRD
CHECKED BY EHM
SCALE 1"=100'
DATE JANUARY 1977
APPROVED *Edwin H. MacArthur*
JOB NO. 6-424
SHEET 6 OF 6 SHEETS

NO.	DESCRIPTION	DATE



TOTAL AREA=79.8 Acres

MONUMENTS SET

STATE OF MAINE
CUMBERLAND COUNTY SS REGISTRY OF DEEDS
RECEIVED _____ 19____
AT _____ AND RECORDED IN
PLAN BOOK _____ PAGE _____

ATTEST _____ REGISTRAR

APPROVED BY CUMBERLAND,
MAINE PLANNING BOARD
DATED MAY 3, 1977

Thomas D. Shaffer
Edward P. McAllister
Robert D. Allen
Karl M. Cox
Oliver K. Willes
George Small

3	Additional monumentation	8/25/80
2	Monuments set	1/9/80
1	Drainage Easements	3/30/77
NO.	DESCRIPTION	DATE
REVISIONS		

PLOT PLAN

GREELY WOODS

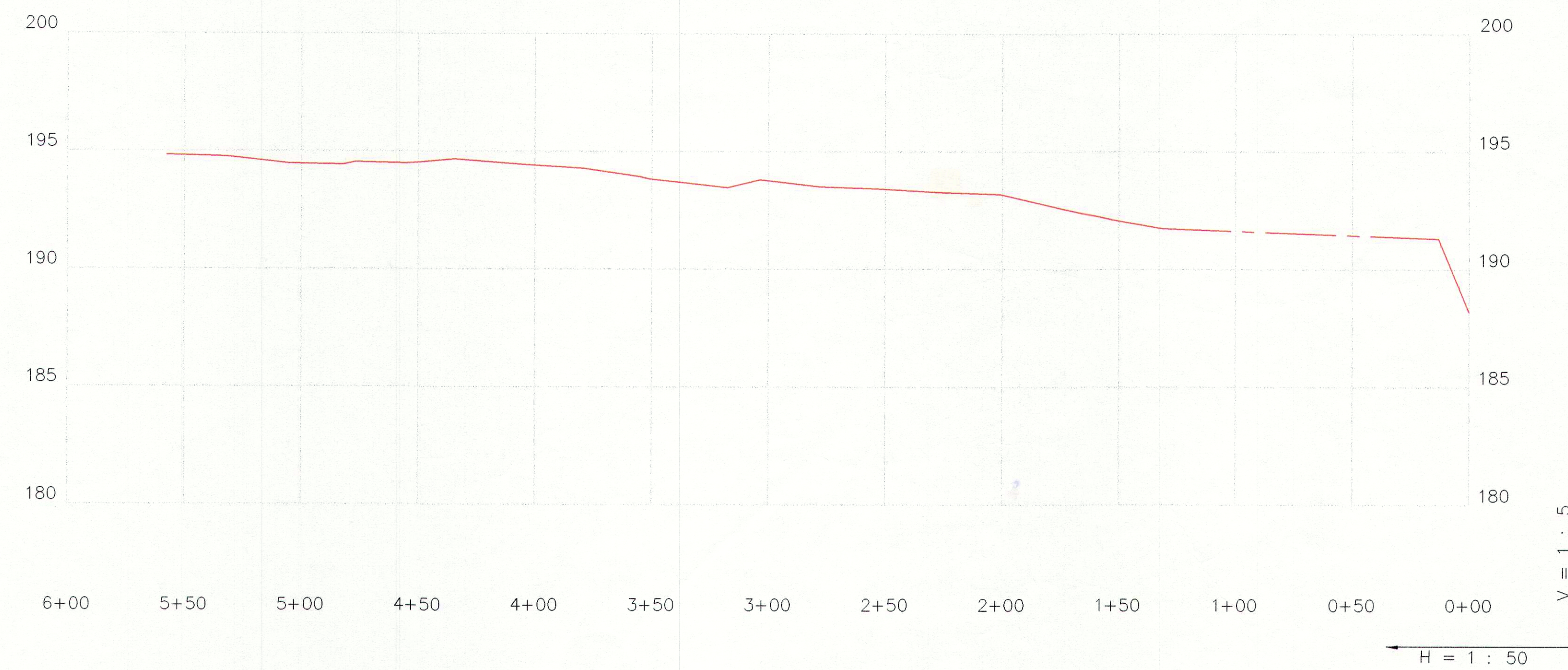
REY+ GARD INC.
CUMBERLAND MAINE

WHITMAN & HOWARD INC.
ENGINEERS AND ARCHITECTS
820 Main St Westbrook, Maine

DESIGNED BY EHM-DFM
DRAWN BY CRD
CHECKED BY DAM

SCALE 1" = 100'
DATE JANUARY 1977
APPROVED *Donald F. Mannett*
JOB NO. 6-424
SHEET 2 OF 6 SHEETS

STATE OF MAINE
DONALD F. MANNETT
REGISTERED
LAND SURVEYOR



EXISTING PROFILE OF ROADSIDE DITCH
 GREELY WOODS SUBDIVISION
 LOT 4, LOT 5, LOT 6