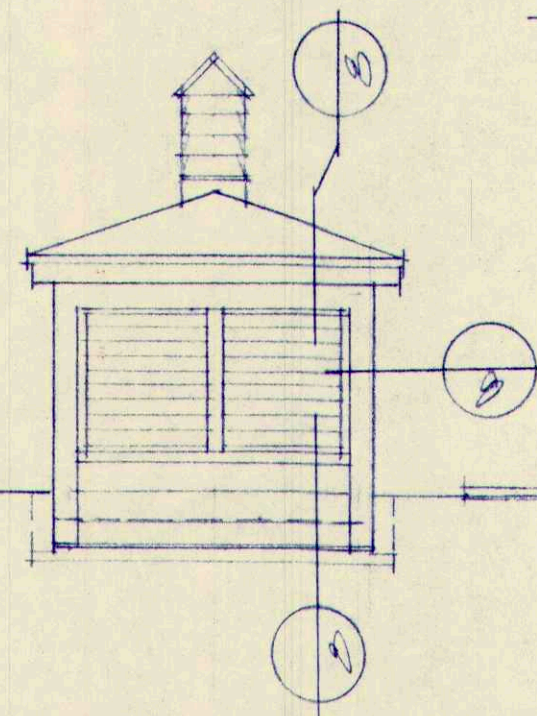
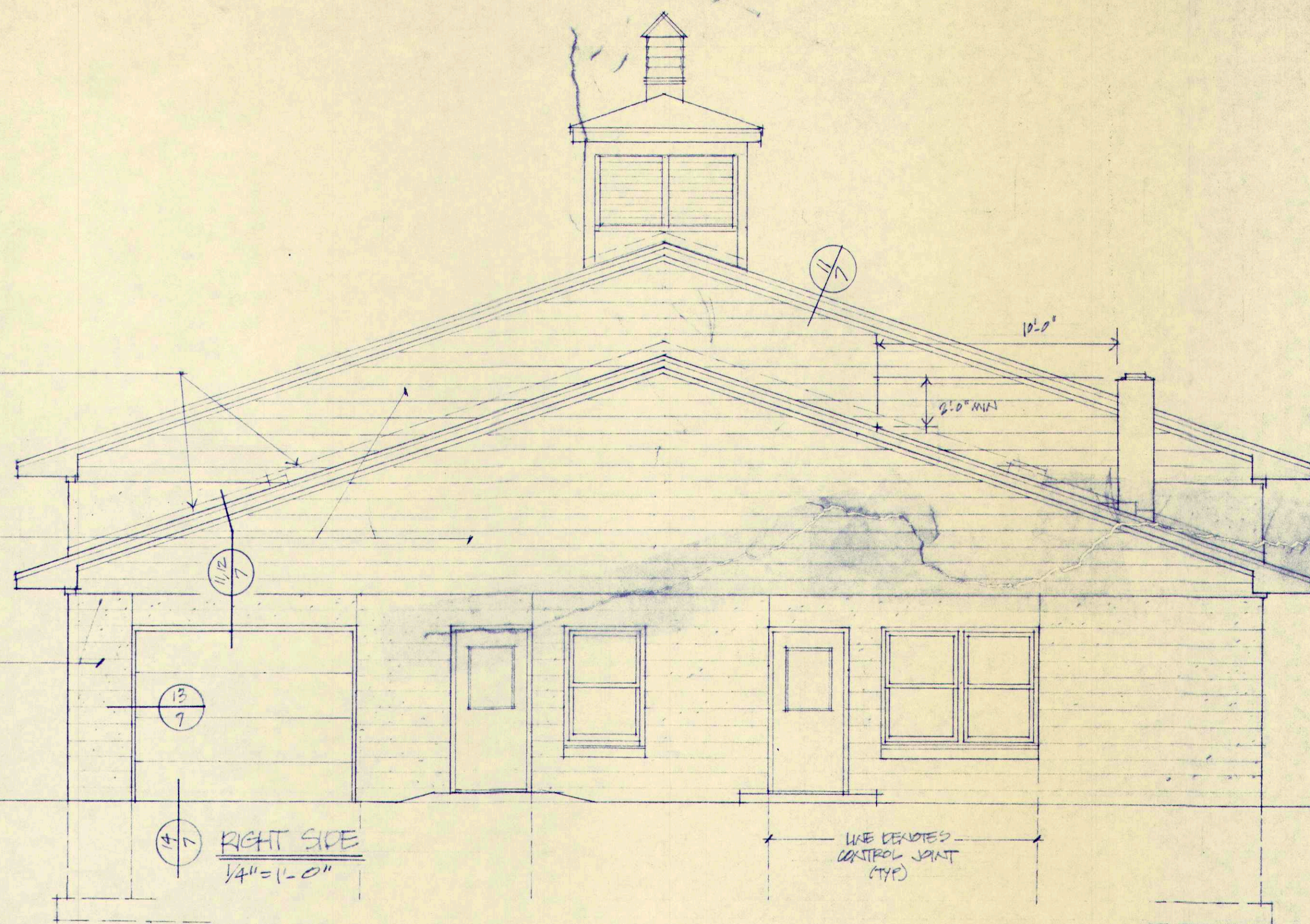


AWK. STEP-FLASHING

8" EXPOS. PRIMED LAP
HARDED SIDING

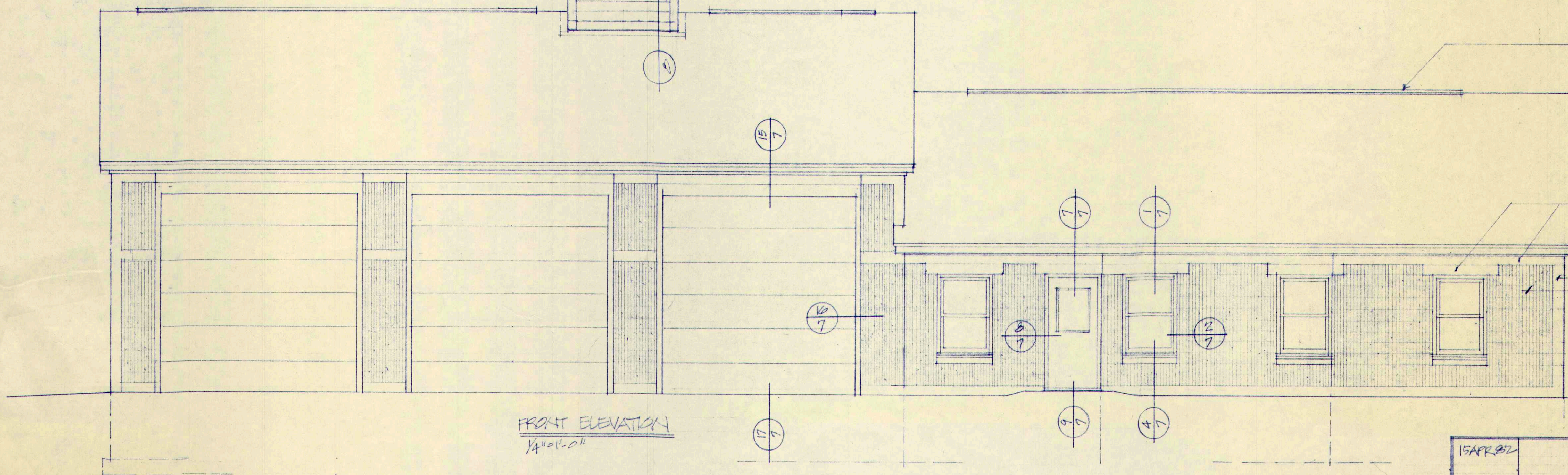
8" STD. CONC. BLK. WALL
AND FOUND. BM.



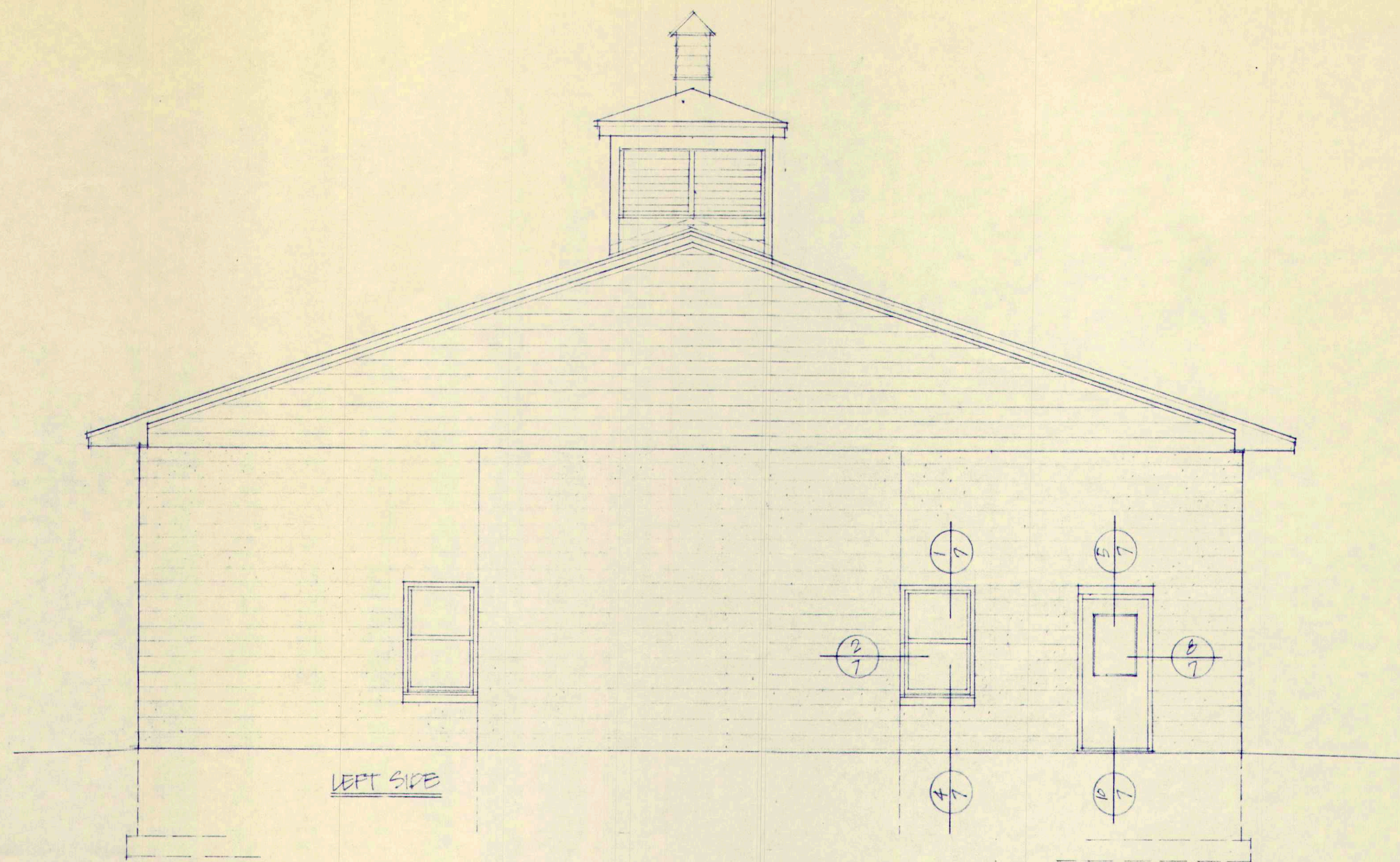
RIDGE VENT

STD. CONC. BLK. FOUND. BM, CORNER,
AND WATER FACING

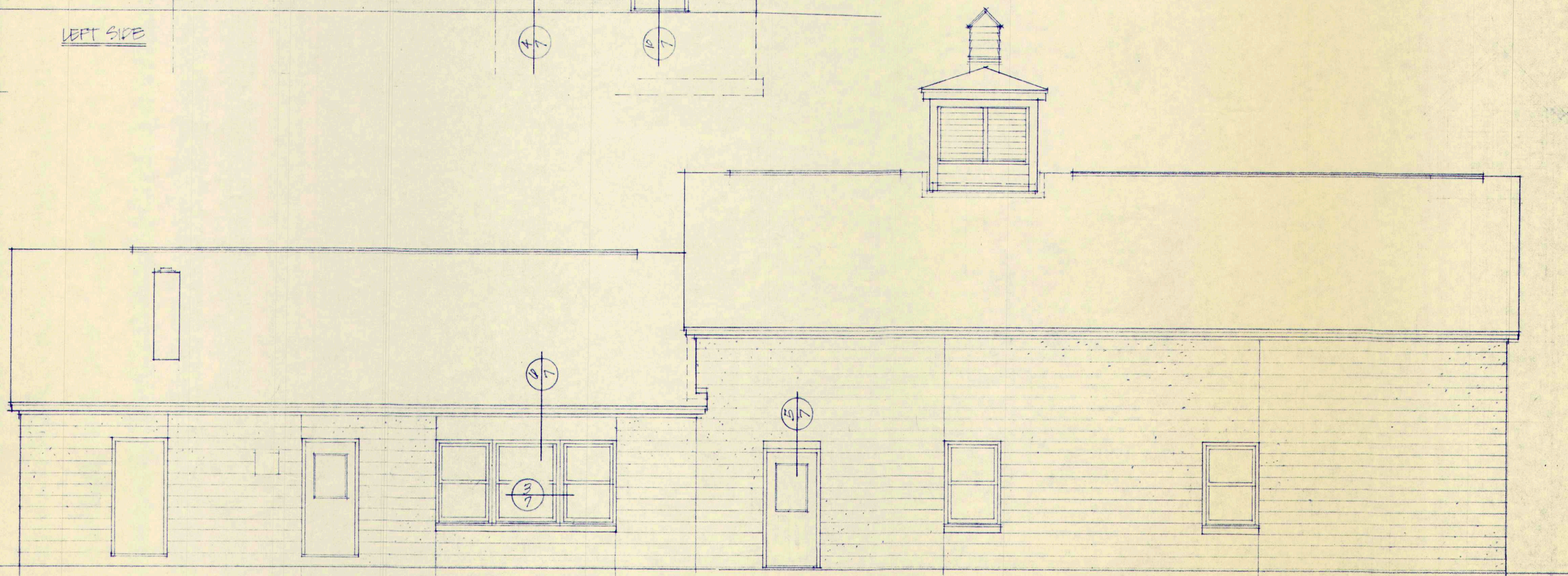
8" SPLIT RIBBED BLK



15 APR 62	50X800 FIRE STATION TOWN OF CUMBERLAND, MAINE	1
-----------	---	---



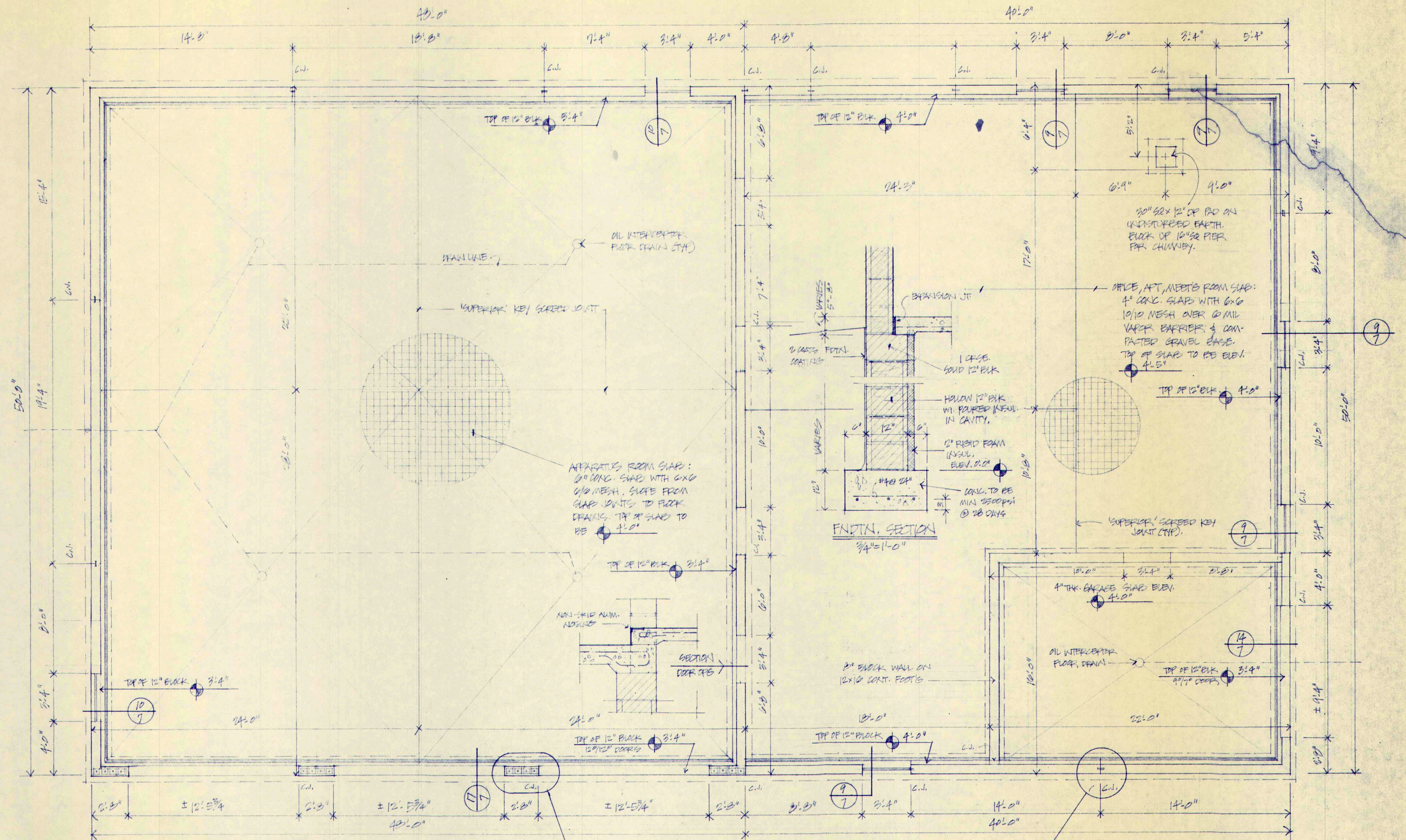
LEFT SIDE



REAR ELEVATION

← CONTROL J.T. (TYP)

15 APR 82	50 x 80 FIRE STATION TOWN OF CUMBERLAND, ME	2
-----------	---	---

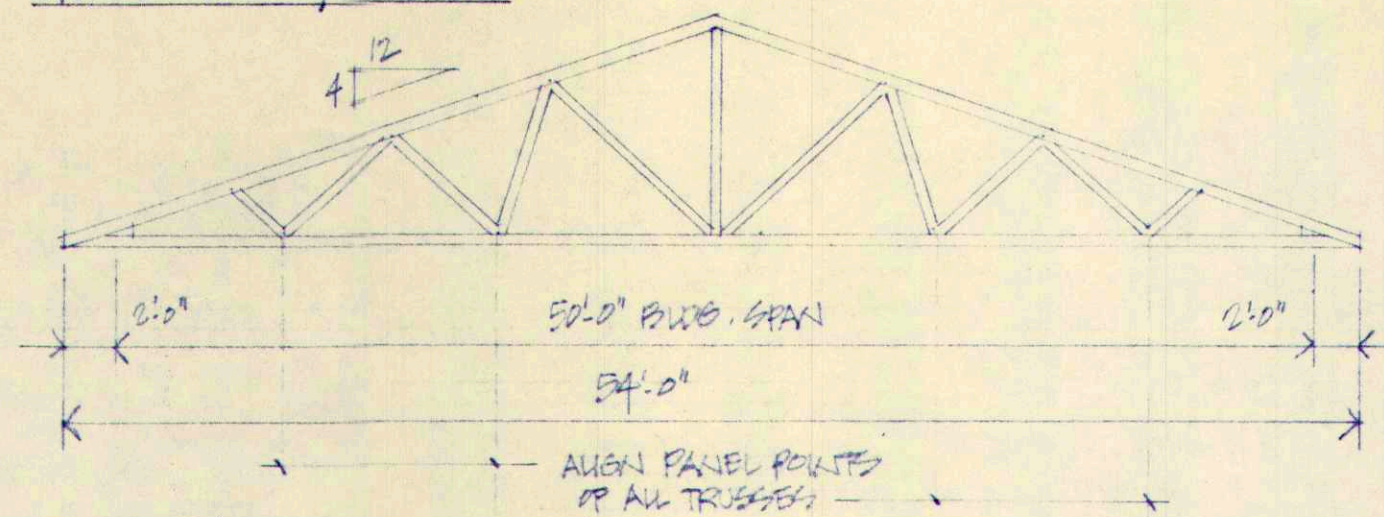


FRONT WALL & SLAB PLAN
1/4" = 1'-0"

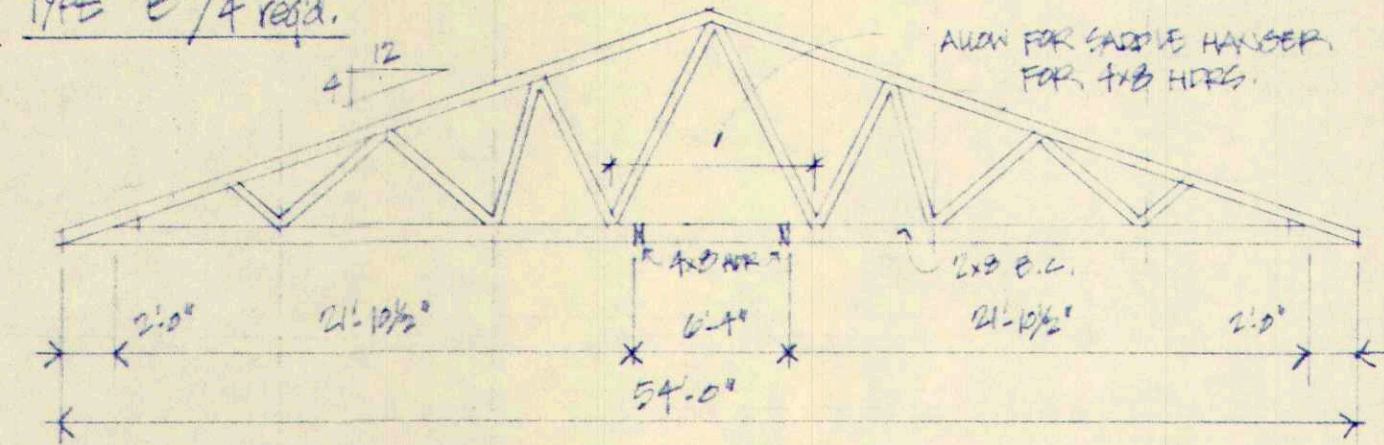
GARAGE DOOR PIER: BUILT S.W. 12" BLK. COURSE AT PIER. GROUT CELLS AND PLACE 1-#4 BAR IN EACH CELL CONTINUOUS FROM PIER'S TO REINFORCE. TOP ALL FOUR PIERS.

'C.J.' INDICATES CONTROL JOINT TO EXTEND DOWN TO FOOTING. JOINT TO CONSIST OF SASH BLOCK FITTED WITH PREFORMED BASKET. MORTAR JOINT TO BE RAKED AND FILLED WITH CAULKING.

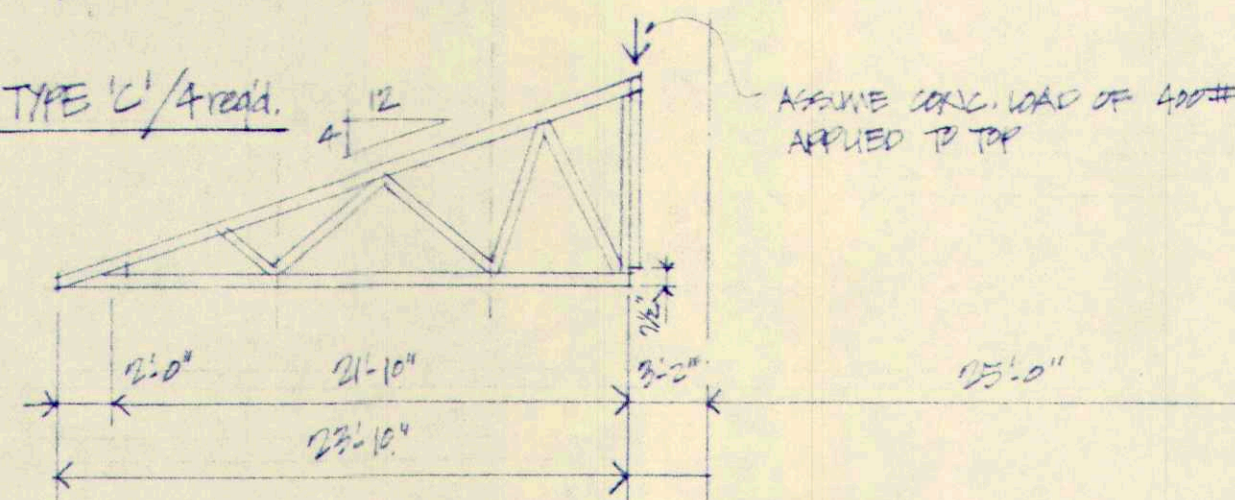
TYPE 'A' TRUSS / 3/8 reqd.



TYPE 'B' / 4 reqd.



TYPE 'C' / 4 reqd.



NOTE: TRUSSES TO BE DESIGNED AND FABRICATED BY APPROVED 'HYDRO-AIR' FABRICATOR TO MEET BOCA CODE CRITERIA.

TRUSS DETAILS

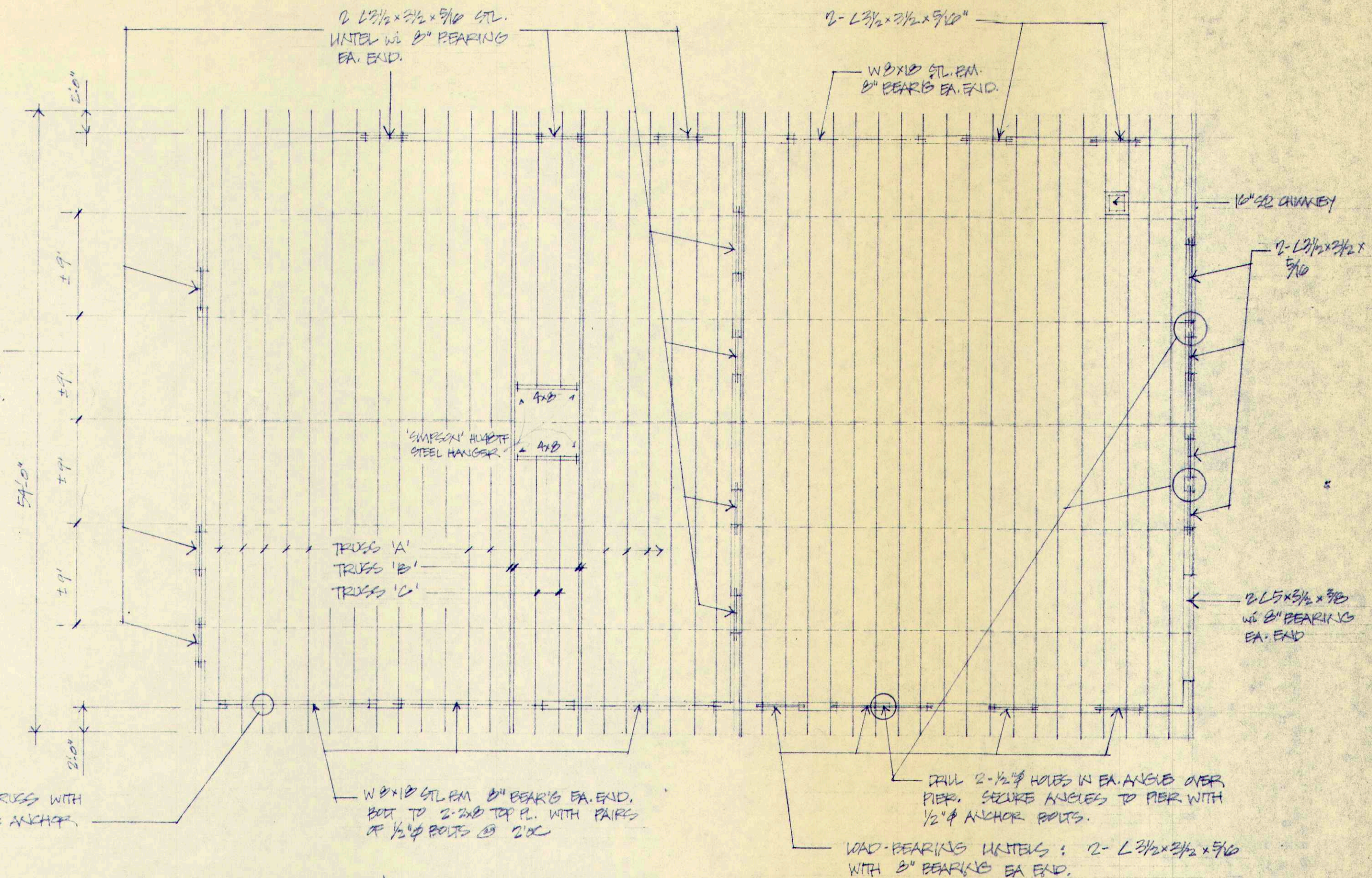
1/8" = 1'-0"

CONTINUOUS GUTTER NAILED TO TOP OF BOTTOM CHORD OF TRUSSES. ENSURE POSITIVE TIE TO STUDDING OF GABLE.

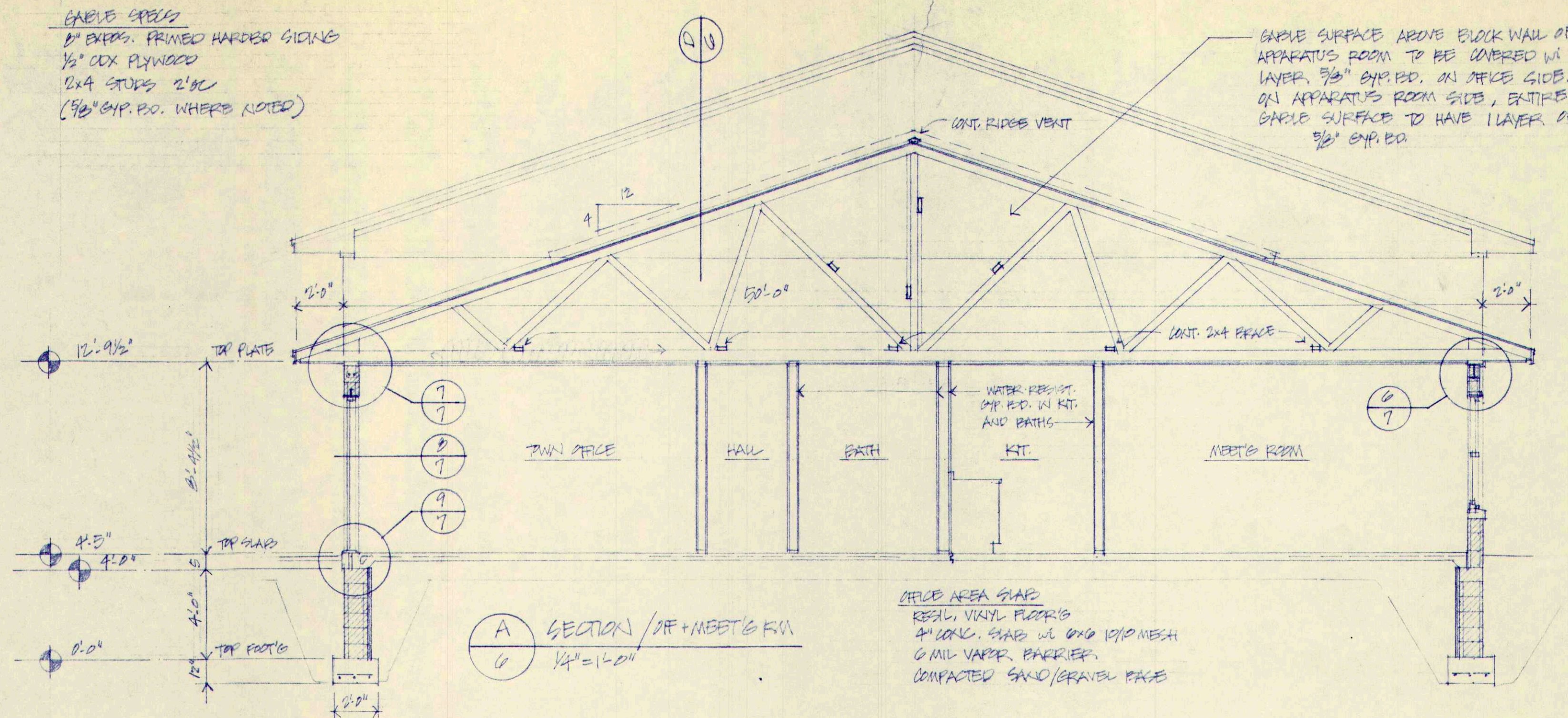
SECURE EACH END OF EACH TRUSS WITH 'SIMPSON' H.S. HURRICANE ANCHOR, OR EQUAL.

ROOF FRAMING & UNTEL PLAN

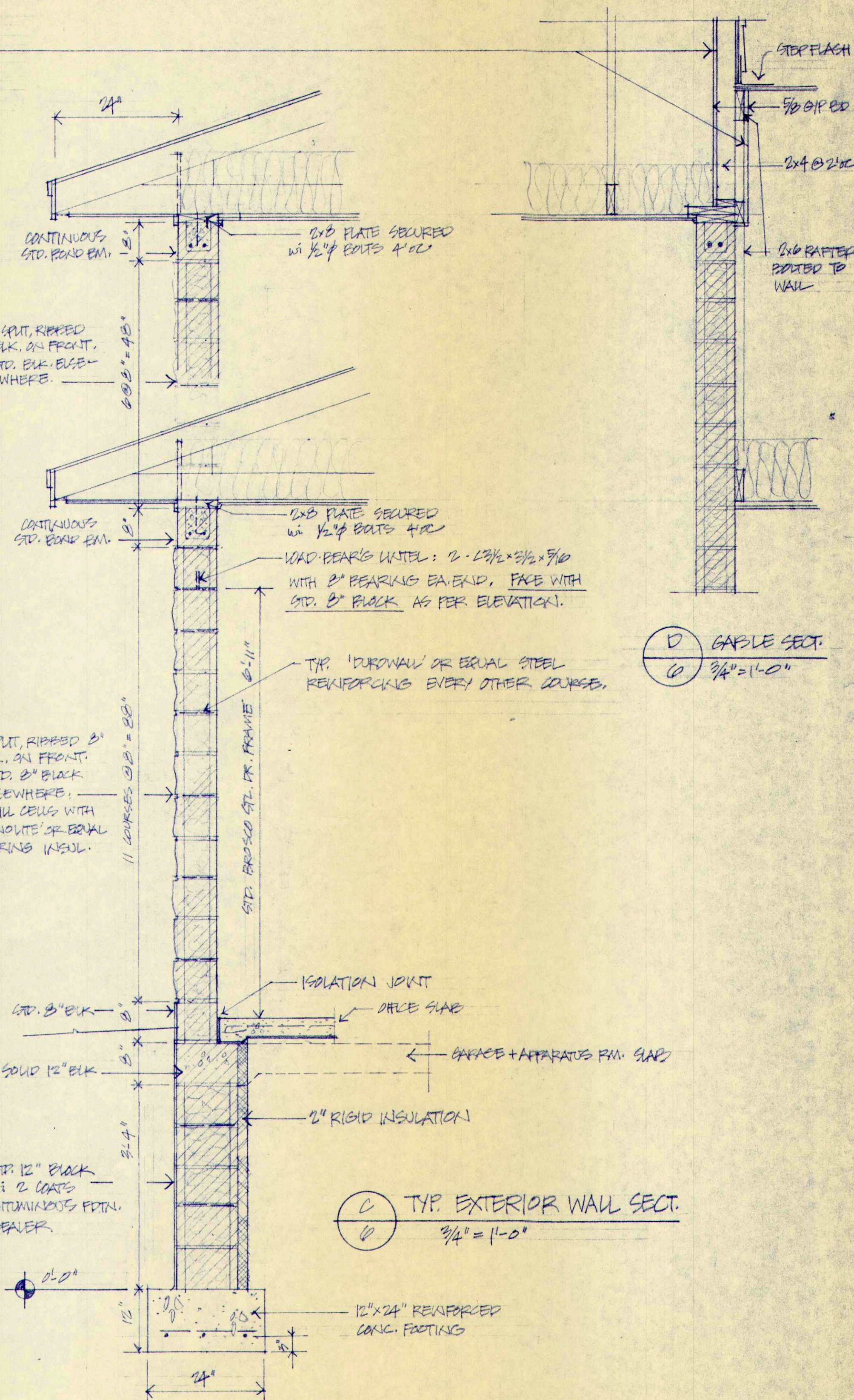
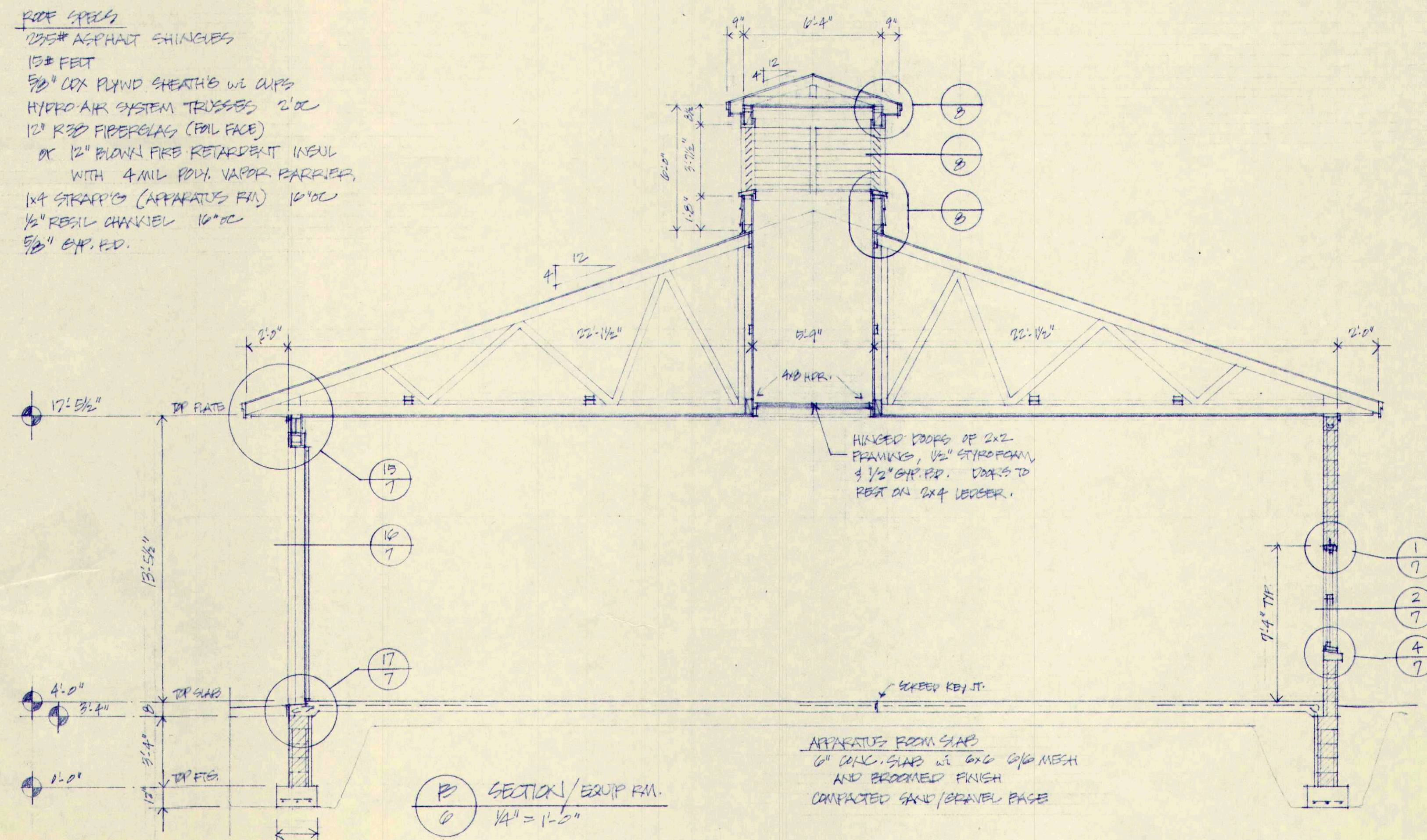
1/2" = 1'-0"

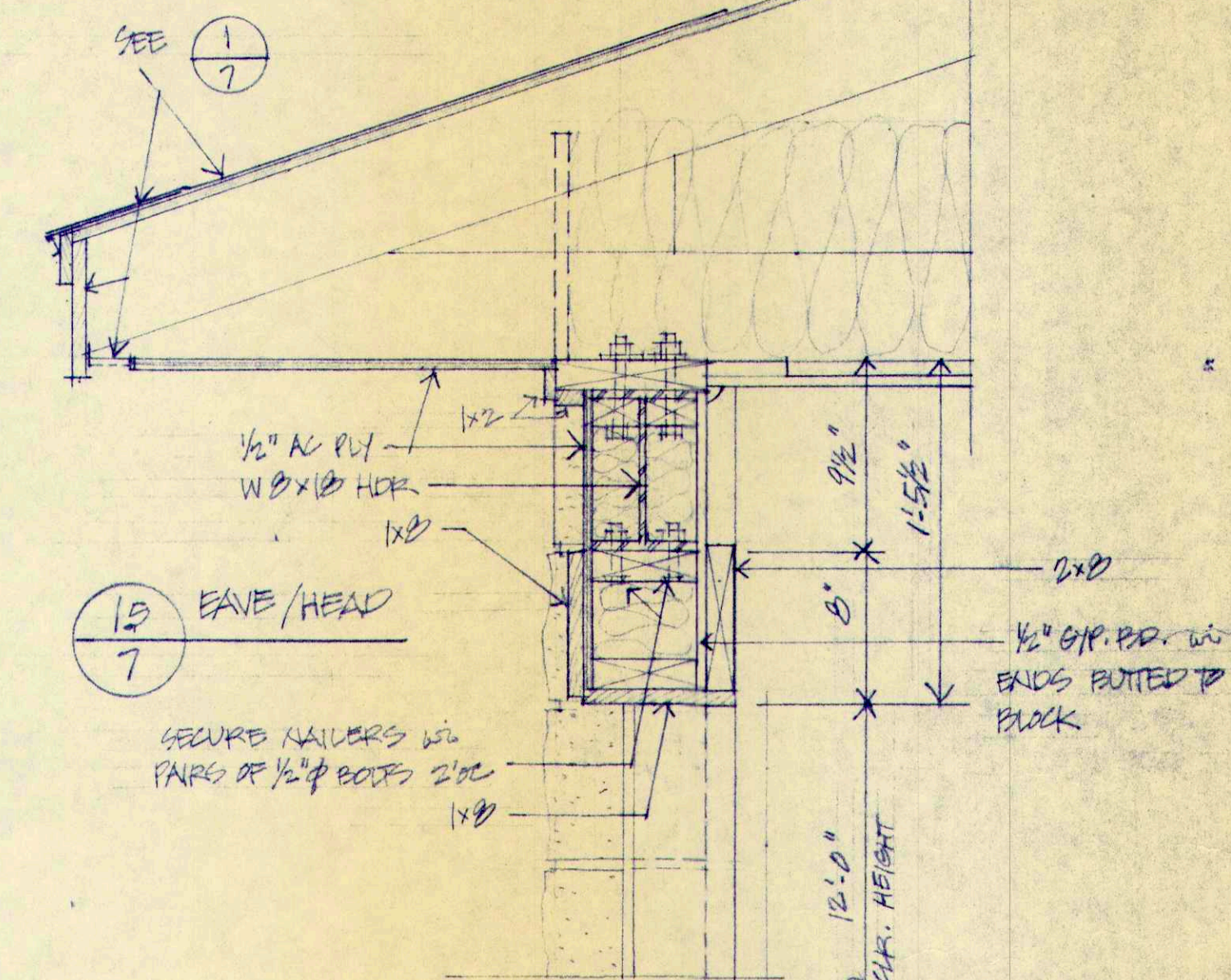
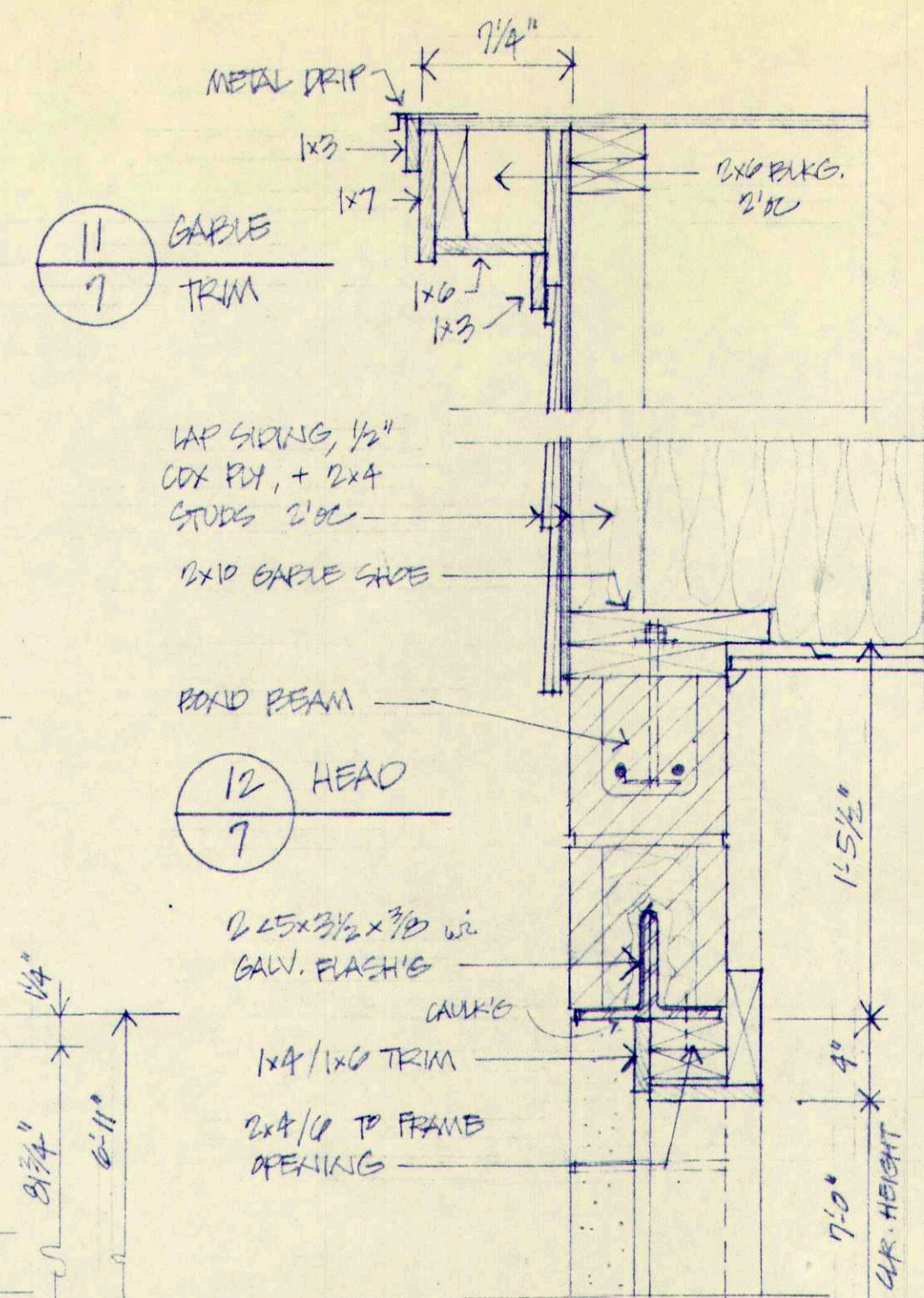
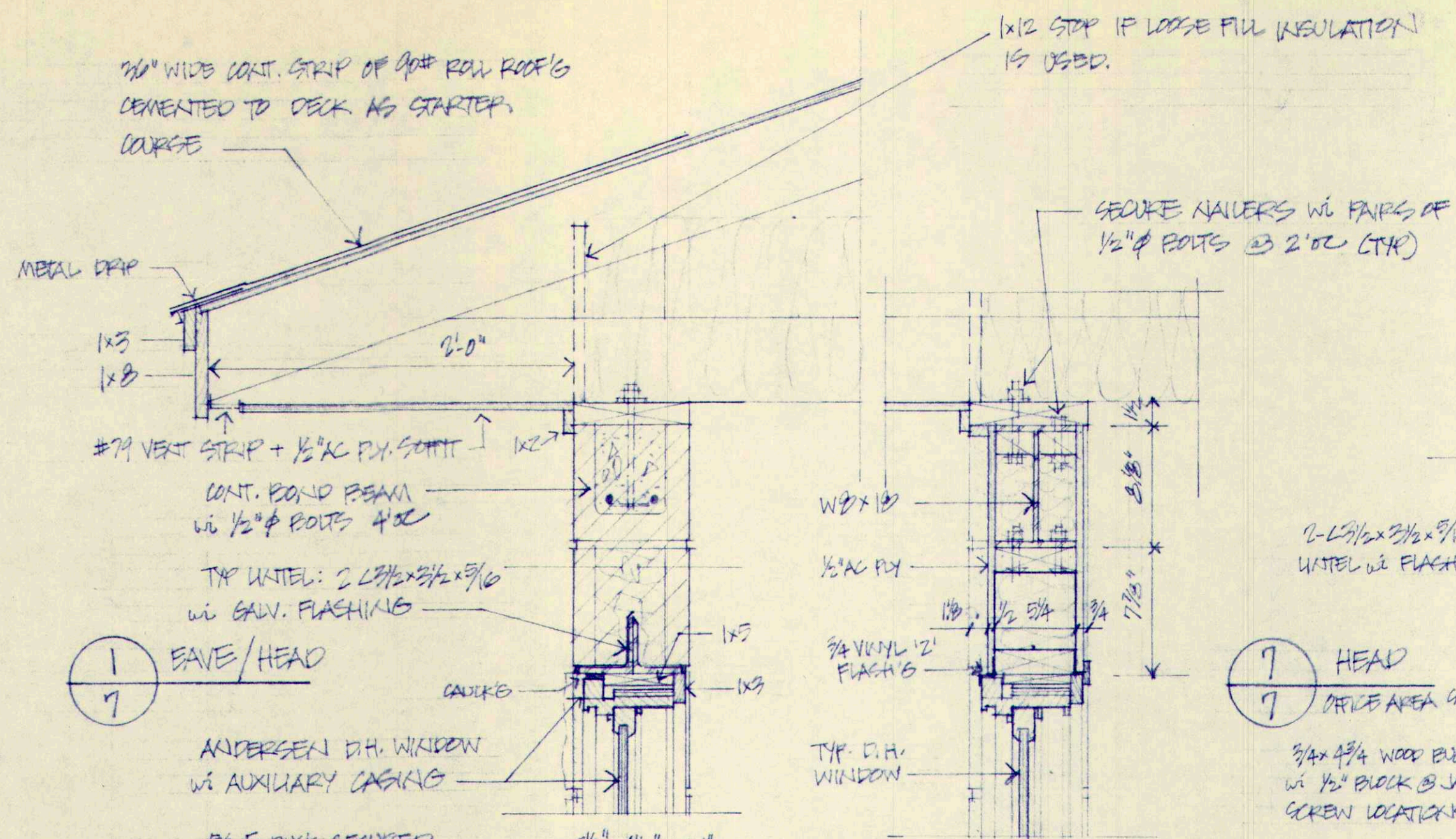


GABLE SPECS
 8" EXPOS. PRIMED HARDEN SIDING
 1/2" CDX PLYWOOD
 2x4 STUDS 2'OC
 (5/8" GYP. BD. WHERE NOTED)



ROOF SPECS
 125# ASPHALT SHINGLES
 15# FEET
 5/8" CDX PLYND SHEATHS W/ CURPS
 HYDRO-AIR SYSTEM TRUSSES 2'OC
 12" R30 FIBERGLAS (FOL FACE)
 OR 12" BLANK FIRE RETARDENT INSUL
 WITH 4 MIL POLY. VAPOR BARRIER
 1x4 STRAPPING (APPARATUS RM) 16"OC
 1/2" RESIL CHALKIE 16"OC
 5/8" GYP. BD.





1 EAVE/HEAD
7

2 JAMB
7

3 MULL. JAMB
7

4 SILL
7

6 HEAD @
7 MEET'S FM

FOR JAMB + SILL,
SEE 13, 14, 17

7 HEAD
7 OFFICE AREA CAULKING

8 JAMB
7

TYP. EFFICAC OVER-
STRAIT CLAS 15 STL.
FRAME + ROOF

9 SILL
7 OFFICE AREAS

13 JAMB
7

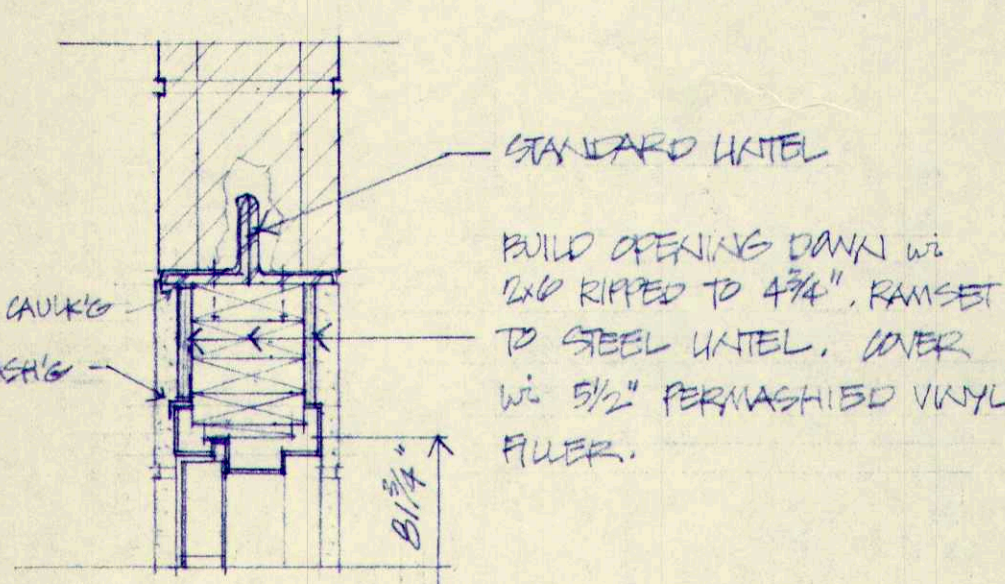
14 SILL
7

16 JAMB
7

17 SILL
7

TYP. ANDERSEN D.H. WINDOW
1 1/2" = 1'-0"

5 MODIFIED
STEEL DR. HEAD
7 EXT. DOOR (2) IN
APPARATUS ROOM ONLY



10 SILL
7 APPARATUS RM.

POURED IN PLACE OF
6" SOLID BLK

1" STYROFOAM
THERMAL BRK

12" SOLID BLK
COURSE

POLICE GARAGE O.H. DOOR
1 1/2" = 1'-0"

APPARATUS ROOM O.H. DOOR
1 1/2" = 1'-0"