

**Initial and Continued Claims by Program for Week Ending: 06/13/2015**

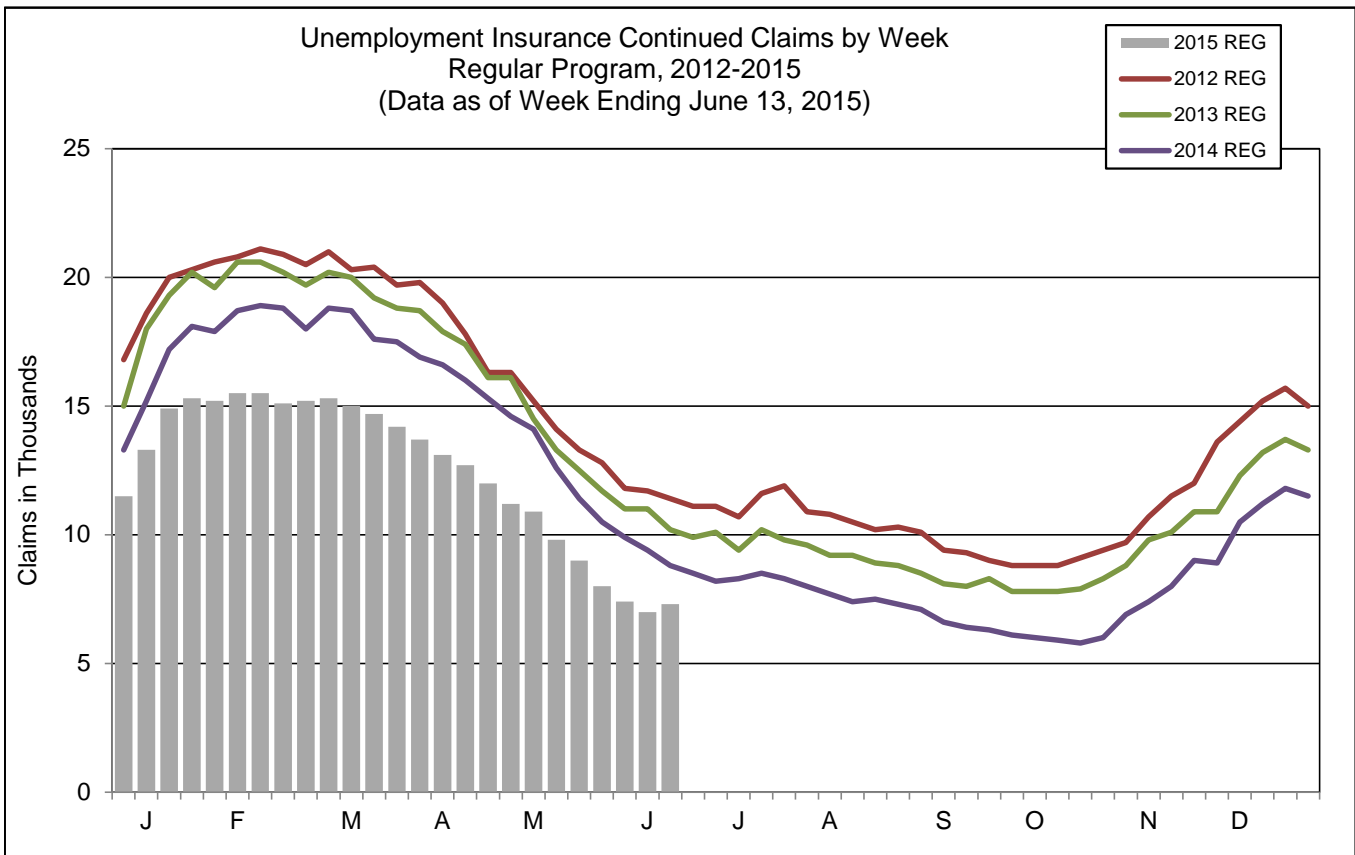
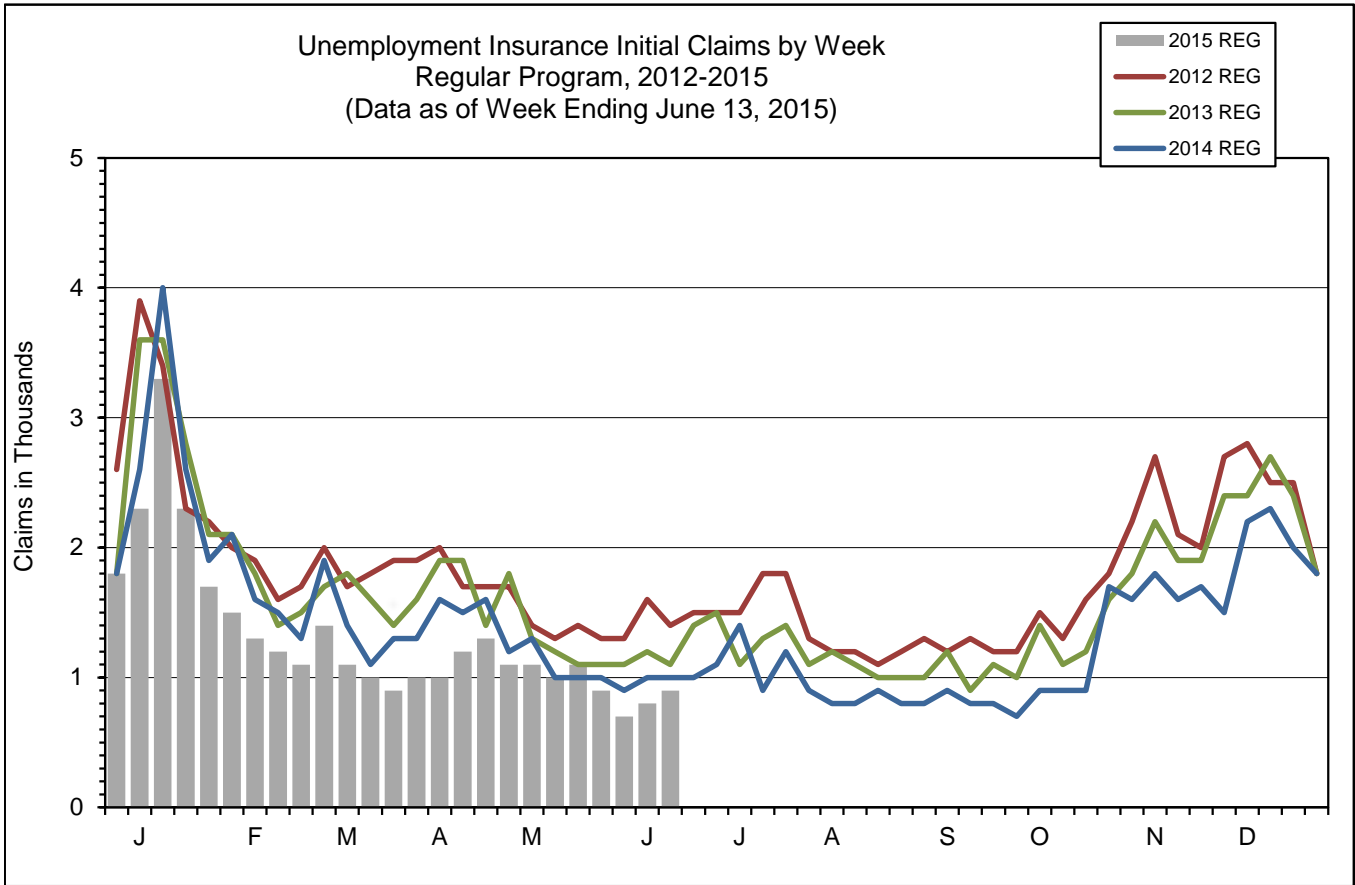
Program		Current Week Claims	Last Week			Last Year		
			Claims	Net Change	% Change	Claims	Net Change	% Change
Regular	Initial:	922	775	▲ 147	19.0	959	▼ -37	-3.9
	Continued:	7,291	6,933	▲ 358	5.2	8,764	▼ -1,473	-16.8
Workshare	Initial:	0	0	— 0	0.0	0	— 0	0.0
	Continued:	0	0	— 0	0.0	4	▼ -4	-100.0
Dislocated Worker Benefits	Initial:	13	18	▼ -5	-27.8	23	▼ -10	-43.5
	Continued:	137	123	▲ 14	11.4	254	▼ -117	-46.1
Trade Readjustment Allowance	Initial:	17	8	▲ 9	112.5	21	▼ -4	-19.0
	Continued:	126	138	▼ -12	-8.7	112	▲ 14	12.5
Unemployment Compensation for Federal Employees & Military	Initial:	2	7	▼ -5	-71.4	1	▲ 1	100.0
	Continued:	67	58	▲ 9	15.5	65	▲ 2	3.1
<b>TOTAL ALL PROGRAMS</b>	<b>Initial:</b>	<b>954</b>	<b>808</b>	<b>▲ 146</b>	<b>18.1</b>	<b>1,005</b>	<b>▼ -51</b>	<b>-5.1</b>
	<b>Continued:</b>	<b>7,621</b>	<b>7,252</b>	<b>▲ 369</b>	<b>5.1</b>	<b>9,200</b>	<b>▼ -1,579</b>	<b>-17.2</b>

**Note:** Initial Claims increased due to more layoffs in Manufacturing, Administrative & Support & Waste Management & Remediation Services, Information, and Public Administration industries. For DWB and TRA programs, the increase in initial and continued claims are due to claimants in approved training exhausting Regular Benefits.

<b>UNEMPLOYMENT INSURANCE FINANCIAL DATA FOR WEEK ENDING</b>		<b>05/23/2015</b>
Regular Unemployment Insurance Benefits for Week	\$	2,125,303.78
Dislocated Workers Benefits Amount Paid for Week	\$	49,581.00
Trade Readjustment Allowance Benefits Amount Paid for Week	\$	73,847.71
Federal Programs Benefits Amount Paid for Week	\$	26,653.89
Net Amount of UI Contributions for Week	\$	398,971.60
Balance Available for UI Benefits as of Week Ending	\$	342,931,457.31
Net Benefits Paid Chargeable to Unemployment Compensation Fund for April 2015	\$	12,305,539.77
<b>Note:</b> Regular Benefits paid include reimbursable payments and other disbursements which are reported under the UI Program. Amount Paid may represent Continued Claims tallied in a prior week.		
<b>Extended Benefits Triggers On when the 13-Week Average Insured Unemployment Rate (IUR) reaches 5% and the IUR is 120% or higher than the last 2 years.</b>		
13-Week Average Insured Unemployment Week Ending 6/06/2015		1.82%
120% Threshold - Current IUR as a percent of the average IUR rate in the prior 2 years.		73.98%
IUR is calculated by taking the average of the Continued Claims claims over a rolling 13 week period divided by Covered Employment. Covered Employment is employment that falls under the Unemployment Insurance Program.		

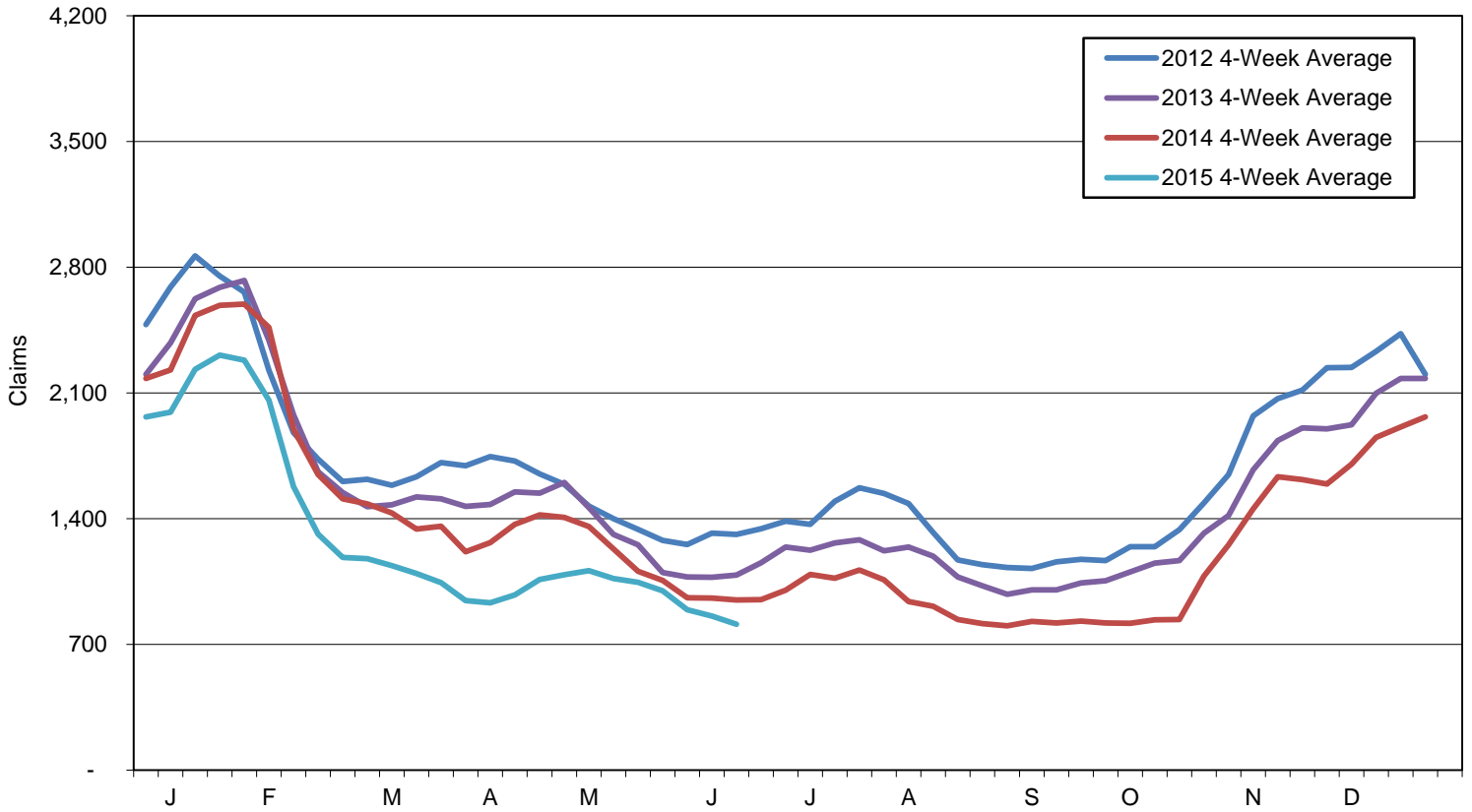
**Mass Layoff Statistics**  
June 13, 2015

Year to Date	Number of Unique Employers	Number of Times Employers had 5 or more Initial Claims	Number of Initial Claims
2015	227	591	6,605
2014	262	701	7,597
Percent Change	▼ -13.4%	▼ -15.7%	▼ -13.1%

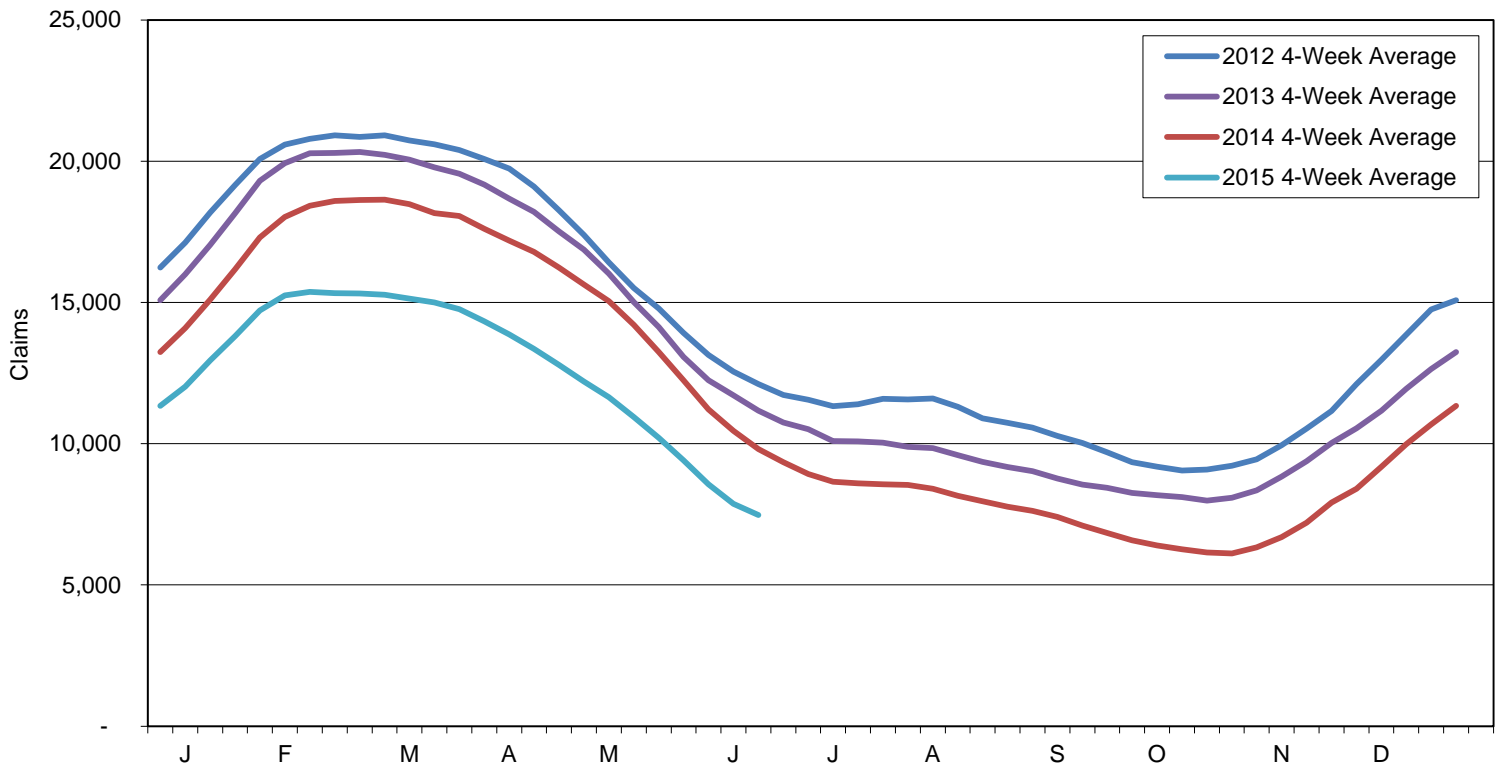


Note: Charts do not include data from Dislocated Worker Benefits, Trade Readjustment Allowance, and Unemployment Compensation for Federal Employees & Military programs due to their small numbers.

Initial Claims for Unemployment Compensation in Maine  
 4-Week Moving Averages for Regular Program



Continued Claims for Unemployment Compensation in Maine  
 4-Week Moving Averages for Regular Program



Note: Charts do not include data from Dislocated Worker Benefits, Trade Readjustment Allowance, and Unemployment Compensation for Federal Employees & Military programs due to their small numbers.