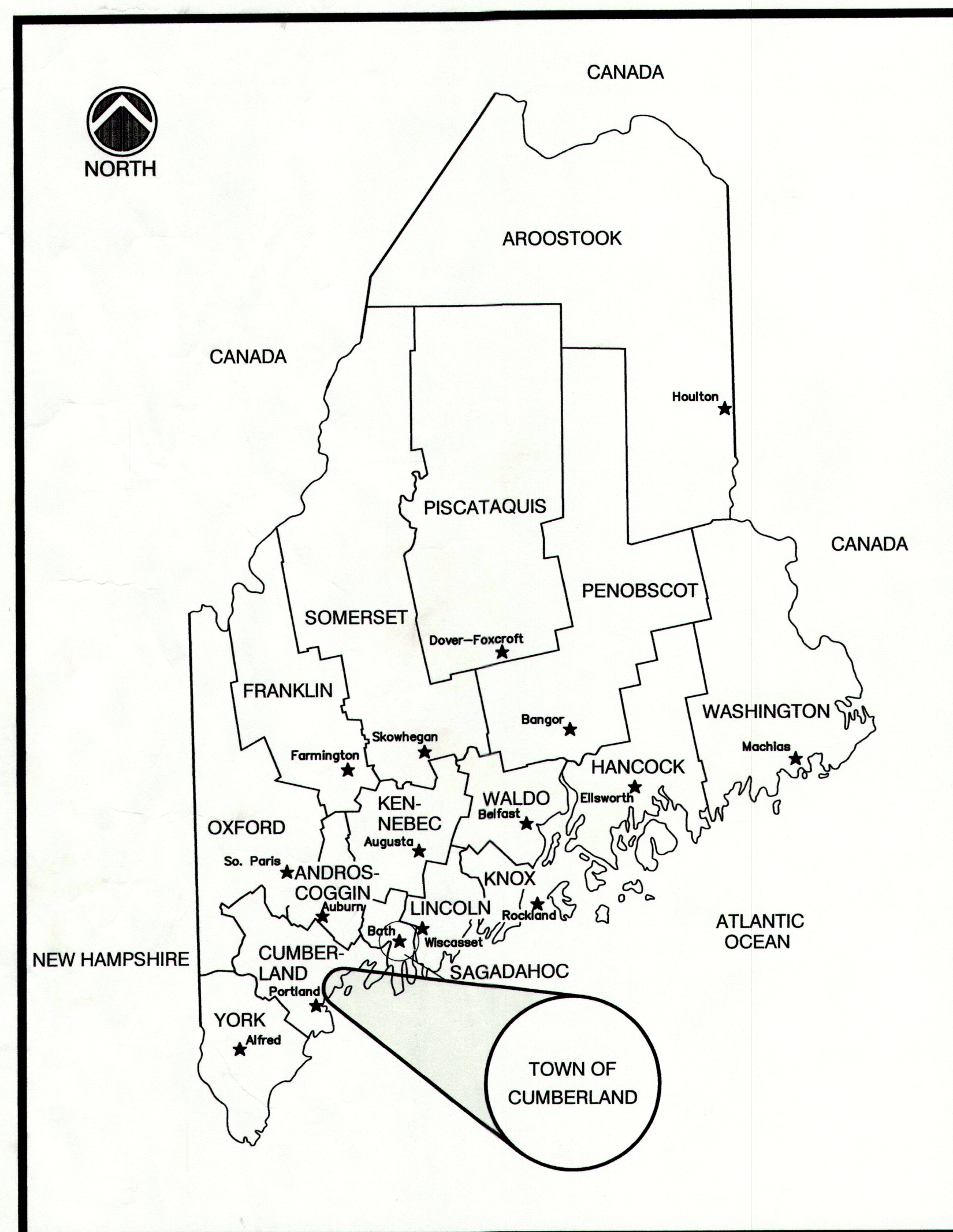


Town of Cumberland, Maine Blanchard Road Reconstruction-Watermain



VICINITY MAP
NOT TO SCALE

CONTRACT DRAWINGS

SHT. NO.	TITLE	DWG. NO.
1	COVER SHEET	---
2	OVERALL SITE PLAN	C-100
3	PLAN AND PROFILE STA 0+00 TO STA 6+00	C-101
4	PLAN AND PROFILE STA 6+00 TO STA 12+00	C-102
5	PLAN AND PROFILE STA 12+00 TO STA 18+00	C-103
6	PLAN AND PROFILE STA 18+00 TO STA 24+00	C-104
7	PLAN AND PROFILE STA 24+00 TO STA 30+00	C-105
8	PLAN AND PROFILE STA 30+00 TO STA 36+00	C-106
9	PLAN AND PROFILE STA 36+00 TO STA 42+00	C-107
10	PLAN AND PROFILE STA 42+00 TO STA 48+00	C-108
11	PLAN AND PROFILE STA 48+00 TO STA 54+00	C-109
12	PLAN AND PROFILE STA 54+00 TO STA 60+00	C-110
13	PLAN AND PROFILE STA 60+00 TO STA 61+50 AND TYPICAL CROSS SECTIONS	C-111
14	TYPICAL CROSS SECTIONS	C-112
15	CONSTRUCTION DETAILS	C-113
16	CONSTRUCTION DETAILS	C-114
17	CONSTRUCTION DETAILS	C-115
18	WATER LINE STANDARD DETAILS	C-116
19	TYPICAL CROSS SECTIONS	C-117

LEGEND

---	RIGHT OF WAY
---	EDGE OF TRAVEL LANE
---	TYPE 3 BITUMINOUS CURBING-MOLD 2
---	TYPE 3 BITUMINOUS CURBING-CAPE COD STYLE
12"SD	STORM DRAIN
6"UD	UNDERDRAIN
---	UNDERDRAIN CAP
■	CATCH BASIN
●	BORING
+	TEST HOLE
---	DITCH
---	RIPRAP
---	STONE CHECK DAM

**Edwards
AND Kelcey**

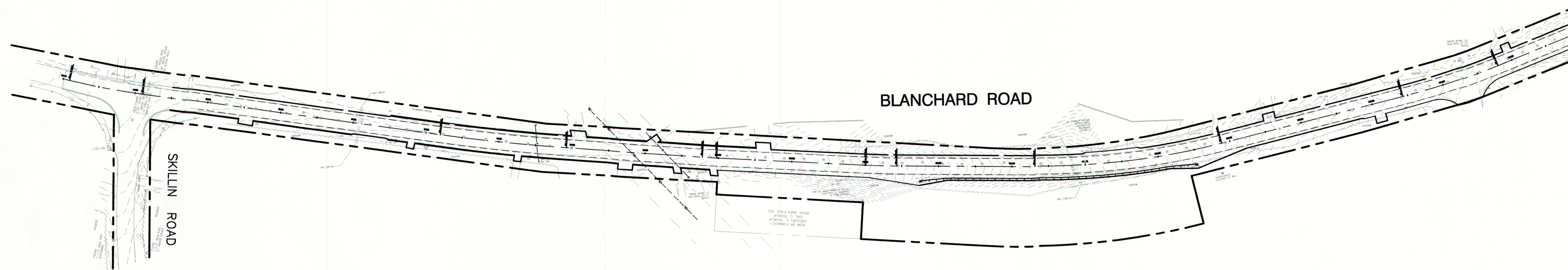
222 St. John Street, Suite 314
Portland, ME 04102
PHONE: (207) 828-1272
FAX: (207) 774-6907

RECORD
DRAWINGS

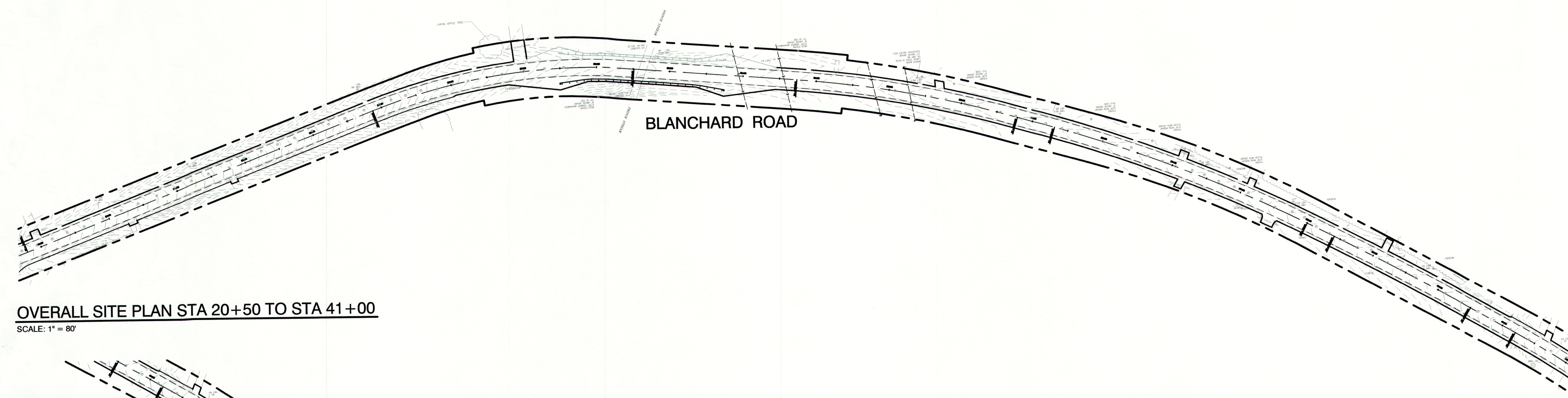


7-27-07

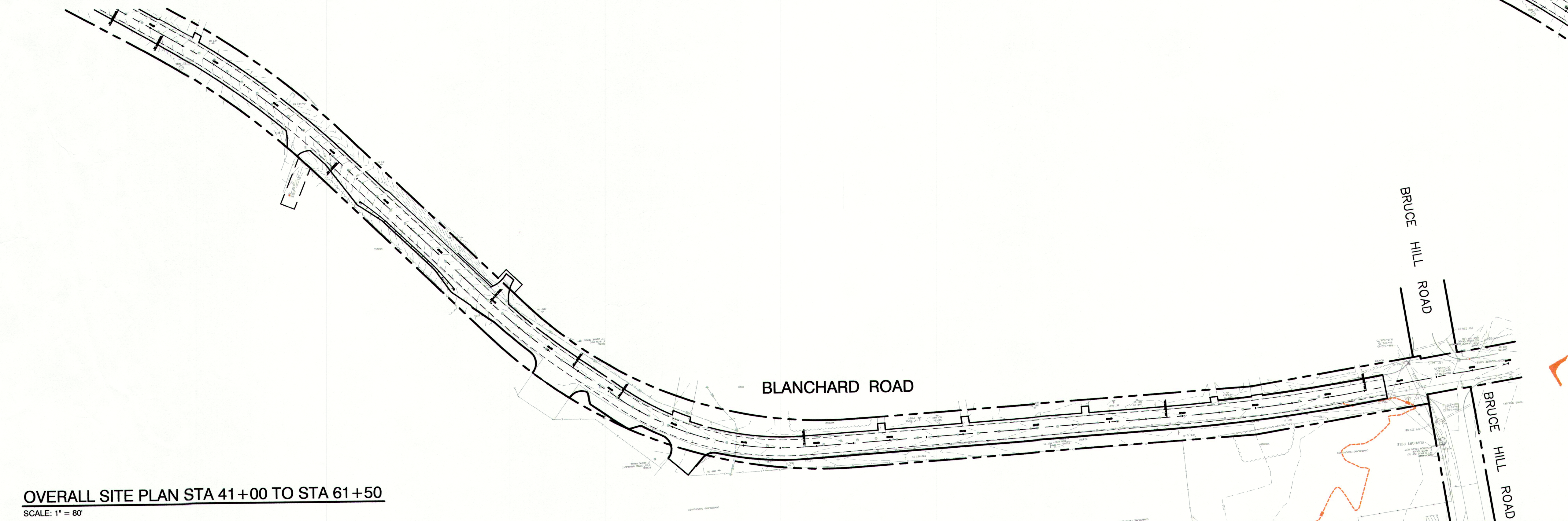
JULY 2007



OVERALL SITE PLAN STA 0+00 TO STA 20+50
SCALE: 1" = 80'



OVERALL SITE PLAN STA 20+50 TO STA 41+00
SCALE: 1" = 80'



OVERALL SITE PLAN STA 41+00 TO STA 61+50
SCALE: 1" = 80'

RECORD
DRAWINGS

SCALE
SCALE: HOR 1" = 80'



PROJECT DESIGNER:
**Edwards
Kelcey**
222 St. John Street, Suite 314
Portland, ME 04102
PHONE: (207) 828-1272
FAX: (207) 774-6907

SCALE: AS NOTED
DATE: 03-17-06
DESIGNED BY: SSJ
DRAWN BY: JAR
CHECKED BY: SUB
APPROVED: SUB

TOWN OF CUMBERLAND
CUMBERLAND, MAINE
BLANCHARD ROAD RECONSTRUCTION-WATER MAIN

OVERALL
SITE PLAN

REVISIONS		BY
NO.	DATE	DESCRIPTION
A	08-16-06	ISSUED FOR: CLIENT REVIEW
B	11-16-06	ISSUED FOR: FINAL CLIENT REVIEW
C	12-01-06	ISSUED FOR: WATER MAIN CONSTRUCTION
R	07-20-07	ISSUED FOR: RECORD DRAWINGS

PROJ. NO.: 060057142
EKF FILE: 6142_c100.dwg
AIP NO.:
DRAWING NO.
C-100
SHEET 2 OF 19



RIPRAP PLUNGE POOL
18" INV. OUT
302.90
REPLACE EXISTING CULVERT
WITH 18" ADS N-12
L=23'
S=0.0217
18" INV. IN
303.40
RIPRAP INLET
PROTECTION

FOUND
1" ANGLE IRON
16" ABOVE GRADE
IN TONE WALL
WIDE GRAVEL PAD

PROPOSED HYDRANT ASSEMBLY
WITH 16"x6" TEE AND 6" GATE
VALVE
18" INV. OUT
300.55
RIPRAP OUTLET PROTECTION

BLANCHARD ROAD

24" INV. IN
296.21
REPLACE EXISTING CULVERT
WITH 24" ADS N-12
L=50'
S=0.01

RIPRAP INLET PROTECTION
PLACE 6" RIGID FOAM INSULATION
ABOVE 16" DI WATER MAIN FROM
STA 4+02 TO STA 4+12 OR AS
DIRECTED

RELOCATE EXISTING MAILBOX

MATCH LINE

SEE SHT C102

MATCH LINE

SEE SHT C107A

SKILLIN ROAD

PLAN STA 0+00 TO STA 6+00

SCALE: 1" = 20'

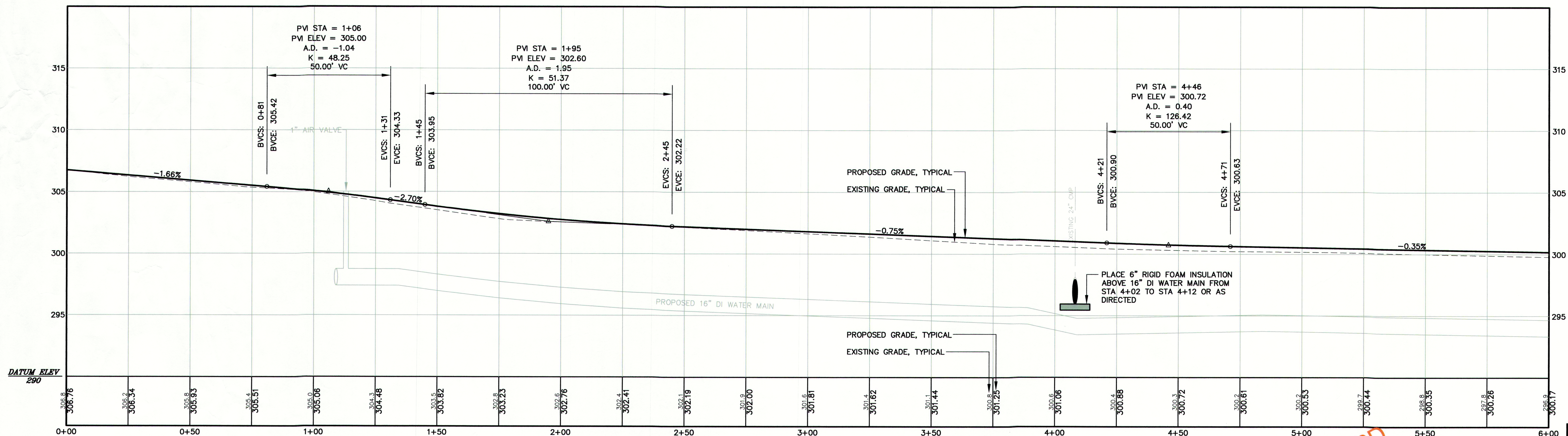
NOTES

- LOCATION OF BACKSLOPE LIMIT OF DITCH WILL VARY
DEPENDING ON EXISTING TOPOGRAPHY-TYPICAL ALL PLANS.
- THE CONTRACTOR SHALL NOT DEVIATE FROM THE PROPOSED
WATER MAIN LOCATION UNLESS APPROVED BY THE ENGINEER
OF RECORD.
- WATER MAIN WORK ON SKILLIN ROAD MUST BE CONSTRUCTED
AFTER MARCH 15, 2007.

4" WHITE LINE
STA 0+50, 11' LT TO STA 6+00, 11' LT
STA 1+50, 11' RT TO STA 6+00, 11' RT
4" DOUBLE YELLOW LINE
STA 1+50, 6' TO STA 6+00 6'

6" UNDERDRAIN
STA 1+88 15' RT TO STA 4+04 25' RT
STA 1+50, 11' LT TO STA 6+00 14' LT
STA 4+50 15' RT TO STA 6+00 14' RT

TYPE 3 BITUMINOUS CURBING CAPE COD STYLE
STA 1+88 16' RT TO STA 4+00 16' RT
STA 4+50 16' RT TO STA 6+00 16' RT
STA 4+50 16' LT TO STA 6+00 16' LT



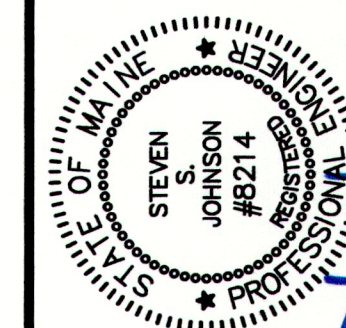
PROFILE STA 0+00 TO STA 6+00

SCALE: (H) 1" = 20' (V) 1" = 4'

SCALE
SCALE: HOR 1" = 20'
VER 1" = 4'



RECORD
DRAWINGS



222 South Street, Suite 314
Portland, ME 04102
PHONE: (207) 828-1272
FAX: (207) 774-8807

Edwards
AND
Kelcey

PROJECT DESIGNER:
SCALE: AS NOTED
DATE: 03-17-06
DESIGNED BY: SSJ
DRAWN BY: JAR
CHECKED BY: SJB
APPROVED: SJB

TOWN OF CUMBERLAND
CUMBERLAND, MAINE
BLANCHARD ROAD RECONSTRUCTION-WATER MAIN
PLAN AND PROFILE
STA 0+00 TO STA 6+00

REVISIONS		BY
NO.	DATE	DESCRIPTION
B	11-16-06	ISSUED FOR: FINAL CLIENT REVIEW
C	12-01-06	ISSUED FOR: WATER MAIN CONSTRUCTION
D	12-18-06	ISSUED FOR: WATER MAIN CONSTRUCTION-ADDENDUM 1
R	07-20-07	ISSUED FOR: RECORD DRAWINGS

PROJ. NO.: 060057142
EKF FILE: 6142_c101.dwg
AIP NO.:

DRAWING NO.
C-101
SHEET 3 OF 19



4" WHITE LINE
STA 6+00, 11' LT TO STA 12+00, 11' LT
STA 6+00, 11' RT TO STA 12+00, 11' RT

4" DOUBLE YELLOW LINE
STA 6+00, 0' TO STA 12+00, 0'

6" UNDERDRAIN
STA 6+00, 15' LT TO STA 7+50, 15' LT
STA 7+50, 15' LT TO STA 9+50, 15' LT
STA 6+00, 15' RT TO STA 7+50, 15' RT
STA 7+50, 15' RT TO STA 9+50, 15' RT
STA 9+50, 15' RT TO STA 11+00, 15' RT
STA 11+00, 15' RT TO STA 11+75, 30' RT

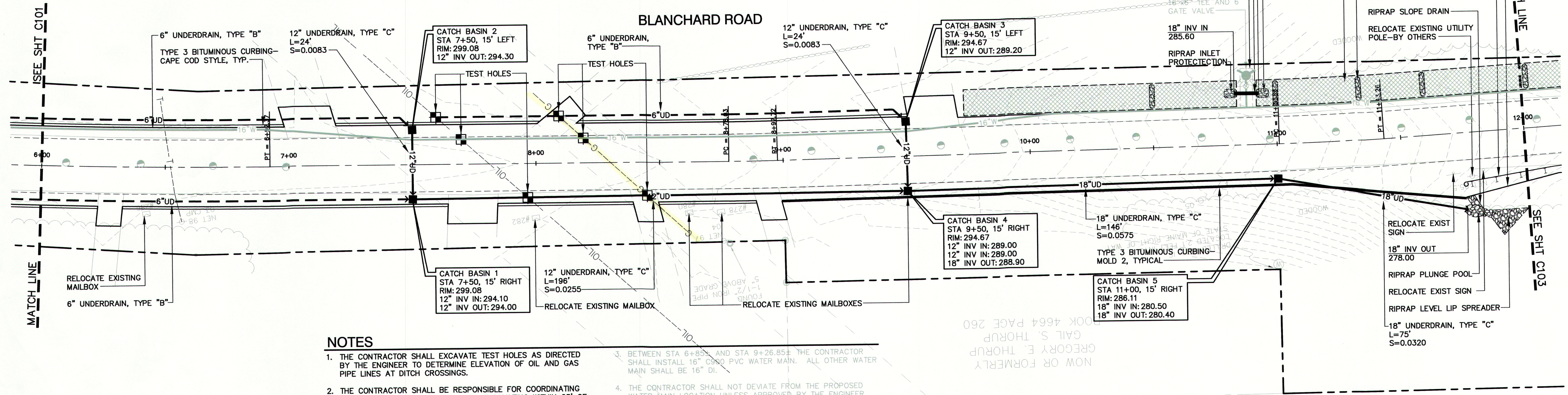
12" UNDERDRAIN
STA 7+50, 15' LT TO STA 7+50, 15' RT
STA 7+50, 15' RT TO STA 9+50, 15' RT
STA 9+50, 15' RT TO STA 11+00, 15' RT
STA 11+00, 15' RT TO STA 11+75, 30' RT

18" UNDERDRAIN
STA 9+50, 15' RT TO STA 11+00, 15' RT
STA 11+00, 15' RT TO STA 11+75, 30' RT

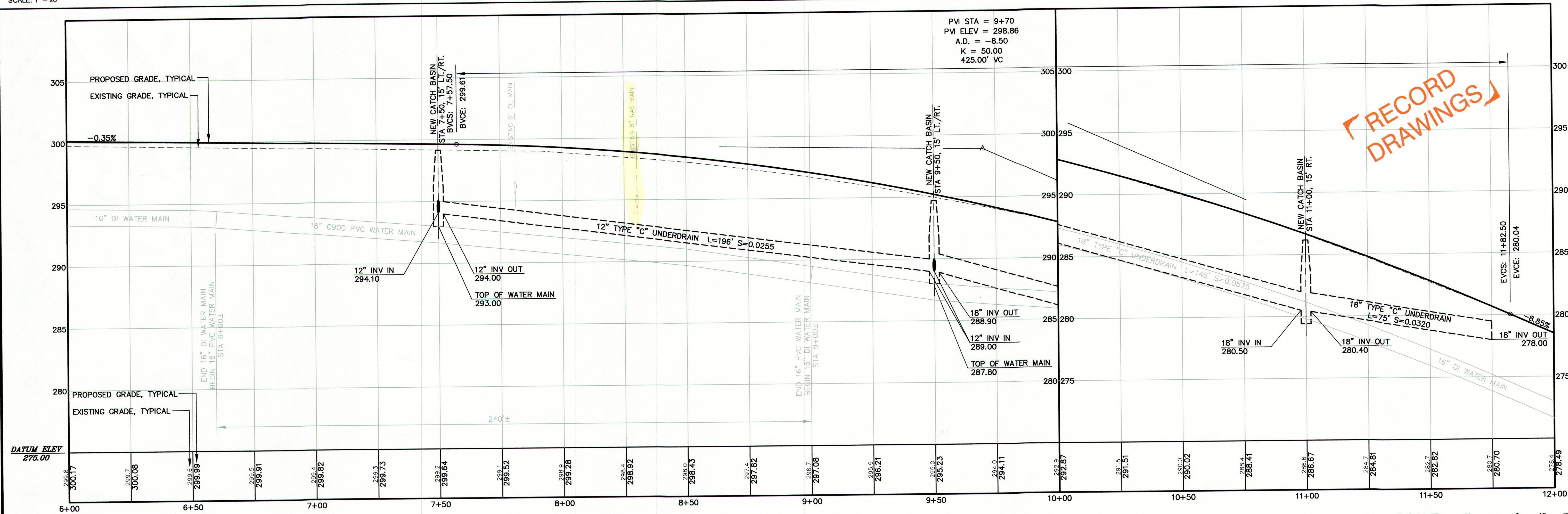
TYPE 3 BITUMINOUS CURBING-CAPE COD STYLE
STA 6+00, 16' LT TO STA 7+00, 16' LT
STA 7+00, 16' LT TO STA 9+50, 16' LT
STA 6+00, 16' RT TO STA 6+22, 16' RT
STA 6+22, 16' RT TO STA 7+50, 16' RT
STA 7+50, 16' RT TO STA 8+40, 16' RT
STA 8+40, 16' RT TO STA 9+50, 16' RT
STA 9+50, 16' RT TO STA 11+75, 26' RT

TYPE 3 BITUMINOUS CURBING-MOLD 2
STA 9+00, 16' RT TO STA 11+75, 26' RT

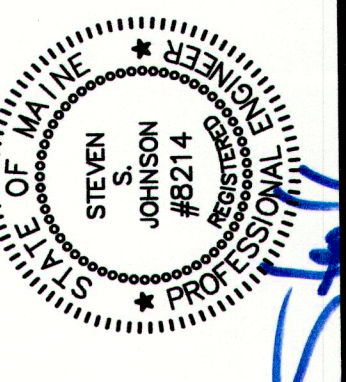
DESCRIPTION	STATION	RIM ELEV	INV IN	INV OUT
CB1	7+50, 15' RT	299.08	294.10(12") 295.64(6")	294.00(12")
CB2	7+50, 15' LT	299.08	295.64(6")	294.30(12")
CB3	9+50, 15' LT	294.67	291.23(6")	289.20(12")
CB4	9+50, 15' RT	294.67	288.00(12") 289.00(12")	288.90(18")
CB5	11+00, 15' RT	286.11	280.50(18")	280.40(18")



PLAN STA 6+00 TO STA 12+00
SCALE: 1" = 20'



PROFILE STA 6+00 TO STA 12+00
SCALE: (H) 1" = 20' (V) 1" = 4'



PROJECT DESIGNER:
222 St. John Street, Suite 314
PORTLAND, ME 04101
PHONE: (207) 828-1272
FAX: (207) 774-8907

Edwards
AND
Kelcey

SCALE: AS NOTED
DATE: 03-17-06
DESIGNED BY: SSJ
DRAWN BY: JAR
CHECKED BY: SUB
APPROVED: SUB

TOWN OF CUMBERLAND
CUMBERLAND, MAINE
BLANCHARD ROAD RECONSTRUCTION-WATER MAIN
PLAN AND PROFILE
STA 6+00 TO STA 12+00

REVISIONS	DATE	DESCRIPTION	BY
B	11-16-06	ISSUED FOR: FINAL CLIENT REVIEW	SSJ
C	12-01-06	ISSUED FOR: WATER MAIN CONSTRUCTION	SSJ
D	12-18-06	ISSUED FOR: WATER MAIN CONSTRUCTION-ADDENDUM 1	SSJ
R	07-20-07	ISSUED FOR: RECORD DRAWINGS	SSJ

PROJ. NO.: 060057142
EK FILE: 6142_c102.dwg
AIP NO.:

DRAWING NO.
C-102
SHEET 4 OF 19



SUPERELEVATION DESIGN GRADES

STATION 12+00 TO STATION 17+50

ELEVATION CHANGE LEFT(INCHES)	SUPERELEVATION (FT/FT)	DISTANCE FROM CENTERLINE	STATION (FOR ELEVATION SEE PLANS)	DISTANCE FROM CENTERLINE	SUPERELEVATION (FT/FT)	ELEVATION CHANGE RIGHT(INCHES)
-5.8	-0.03	16	12+00	16	-0.03	-5.8
-5.8	-0.03	16	12+50	16	-0.012	-2.3
-5.8	-0.03	16	13+00	16	0.0066	1.3
-8.3	-0.043	16	13+50	16	0.025	4.8
-8.3	-0.043	16	14+00	16	0.043	8.3
-8.3	-0.043	16	14+50	16	0.043	8.3
-8.3	-0.043	16	15+00	16	0.043	8.3
-5.8	-0.03	16	15+50	16	0.025	4.8
-5.8	-0.03	16	16+00	16	0.0066	1.3
-5.8	-0.03	16	16+50	16	-0.012	-2.3
-5.8	-0.03	16	17+00	16	-0.03	-5.8

4" WHITE LINE

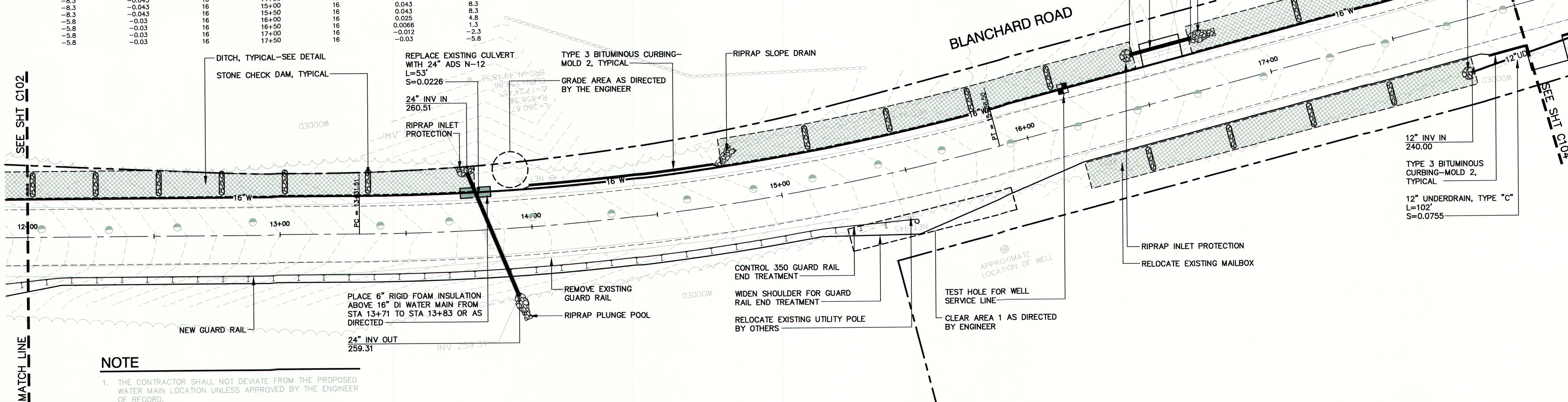
STA 12+00, 11' LT TO STA 18+00, 11' RT
STA 12+00, 11' RT TO STA 18+00, 11' RT

4" DOUBLE YELLOW LINE

STA 12+00, 1/2 TO STA 18+00, 1/2

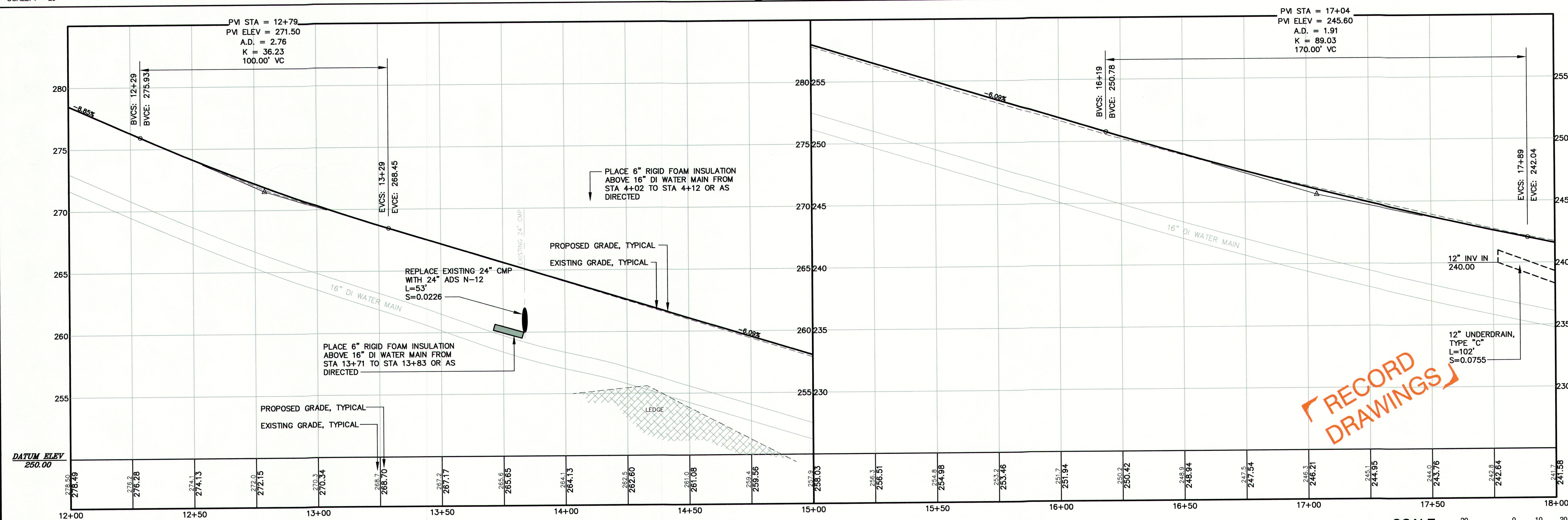
TYPE 3 BITUMINOUS CURBING-MOLD 2

STA 14+00, 16' LT TO STA 14+75, 16' LT
STA 17+85, 16' RT TO STA 18+00, 16' RT



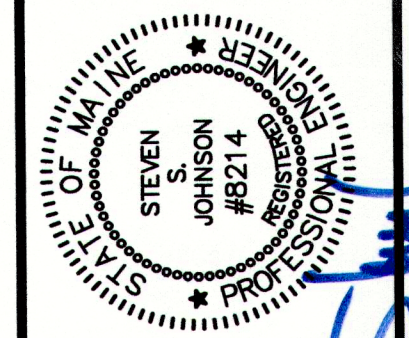
PLAN STA 12+00 TO STA 18+00

SCALE: 1" = 20'



PROFILE STA 12+00 TO STA 18+00

SCALE: (H) 1" = 20' (V) 1" = 4'



PROJECT DESIGNER:
222 St. John Street, Suite 314
Portland, ME 04102
PHONE: (207) 885-1772
FAX: (207) 744-6807

**Edwards
and Kelcey**

SCALE:	AS NOTED
DATE:	03-17-06
DESIGNED BY:	SSJ
DRAWN BY:	JAR
CHECKED BY:	SSJ
APPROVED:	SSJ

TOWN OF CUMBERLAND
CUMBERLAND, MAINE
BLANCHARD ROAD RECONSTRUCTION-WATER MAIN
PLAN AND PROFILE
STA 12+00 TO STA 18+00

NO.	DATE	REVISIONS	DESCRIPTION	BY
B	11-16-06	ISSUED FOR: FINAL CLIENT REVIEW		SSJ
C	12-01-06	ISSUED FOR: WATER MAIN CONSTRUCTION		SSJ
D	12-18-06	ISSUED FOR: WATER MAIN CONSTRUCTION-ADDENDUM 1		SSJ
R	07-20-07	ISSUED FOR: RECORD DRAWINGS		SSJ

PROJ. NO.: 060057142
EKF FILE: 6142_c103.dwg
AIP NO.:

DRAWING NO.
C-103
SHEET 5 OF 19