

**Initial and Continued Claims by Program for Week Ending: 01/03/2015**

Program		Current Week Claims	Last Week			Last Year		
			Claims	Net Change	% Change	Claims	Net Change	% Change
Regular	Initial:	2,341	1,756	▲ 585	33.3	2,636	▼ -295	-11.2
	Continued:	13,293	11,511	▲ 1,782	15.5	15,191	▼ -1,898	-12.5
Emergency Unemployment Compensation 2008 (EUC)	Initial:	0	0	— 0	0.0	135	▼ -135	-100.0
	Continued:	0	0	— 0	0.0	1,967	▼ -1,967	-100.0
Emergency Unemployment Comp. 2008 Tier II (EUCT2)	Initial:	0	0	— 0	0.0	6	▼ -6	-100.0
	Continued:	0	0	— 0	0.0	1,334	▼ -1,334	-100.0
Emergency Unemployment Comp. 2008 Tier III (EUCT3)	Initial:	0	0	— 0	0.0	0	— 0	0.0
	Continued:	0	0	— 0	0.0	2	▼ -2	-100.0
Workshare	Initial:	0	0	— 0	0.0	0	— 0	0.0
	Continued:	0	0	— 0	0.0	7	▼ -7	-100.0
Dislocated Worker Benefits	Initial:	10	9	▲ 1	11.1	8	▲ 2	25.0
	Continued:	57	154	▼ -97	-63.0	146	▼ -89	-61.0
Trade Readjustment Allowance	Initial:	0	3	▼ -3	-100.0	0	— 0	0.0
	Continued:	196	204	▼ -8	-3.9	140	▲ 56	40.0
Unemployment Compensation for Federal Employees & Military	Initial:	4	6	▼ -2	-33.3	13	▼ -9	-69.2
	Continued:	111	86	▲ 25	29.1	166	▼ -55	-33.1
<b>TOTAL ALL PROGRAMS</b>	<b>Initial:</b>	<b>2,355</b>	<b>1,774</b>	<b>▲ 581</b>	<b>32.8</b>	<b>2,798</b>	<b>▼ -443</b>	<b>-15.8</b>
	<b>Continued:</b>	<b>13,657</b>	<b>11,955</b>	<b>▲ 1,702</b>	<b>14.2</b>	<b>18,953</b>	<b>▼ -5,296</b>	<b>-27.9</b>

**Note:** Initial Claims increased due to more layoffs in Manufacturing and Transportation & Warehousing industries. For DWB and TRA programs, the increase in initial and continued claims are due to claimants in approved training exhausting Regular Benefits. EUC08 expired on 01/01/2014; EUC claims filed are for compensation week ending 12/28/13 or earlier.

**UNEMPLOYMENT INSURANCE FINANCIAL DATA FOR WEEK ENDING**

**12/13/2014**

Regular Unemployment Insurance Benefits for Week	\$	2,499,582.81
Emergency Unemployment Compensation 2008	\$	0.00
Dislocated Workers Benefits Amount Paid for Week	\$	62,295.00
Trade Readjustment Allowance Benefits Amount Paid for Week	\$	82,976.40
Federal Programs Benefits Amount Paid for Week	\$	33,727.32
Net Amount of UI Contributions for Week	\$	192,816.49
Balance Available for UI Benefits as of Week Ending	\$	322,801,745.97
Net Benefits Paid Chargeable to Unemployment Compensation Fund for November 2014	\$	6,808,988.29

**Note:** Regular Benefits paid include reimbursable payments and other disbursements which are reported under the UI Program. Amount Paid may represent Continued Claims tallied in a prior week.

**Extended Benefits Triggers On when the 13-Week Average Insured Unemployment Rate (IUR) reaches 5% and the IUR is 120% or higher than the last 2 years.**

13-Week Average Insured Unemployment Week Ending 12/27/2014	1.57%
120% Threshold - Current IUR as a percent of the average IUR rate in the prior 2 years.	75.11%

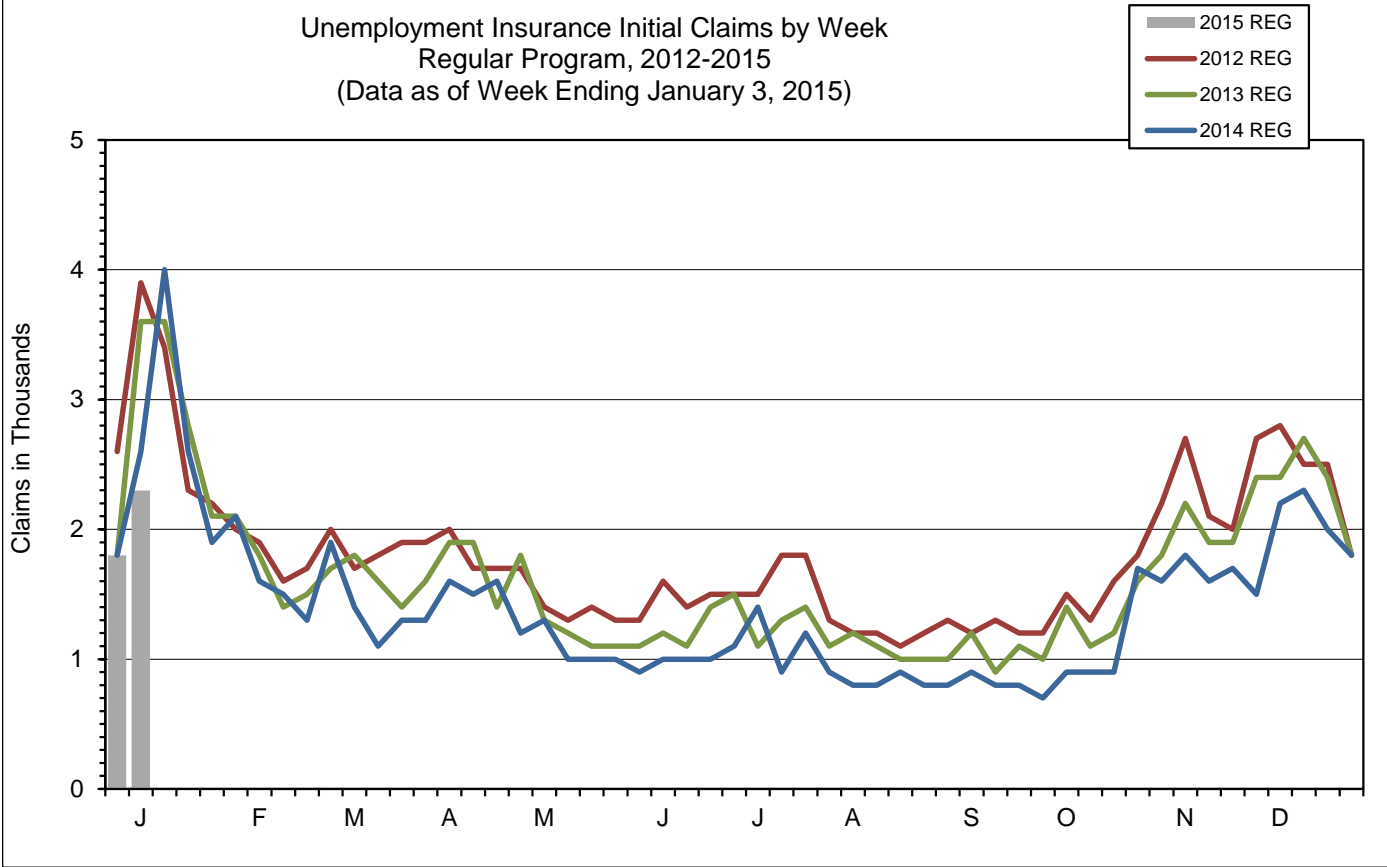
IUR is calculated by taking the average of the Continued Claims claims over a rolling 13 week period divided by Covered Employment. Covered Employment is employment that falls under the Unemployment Insurance Program.

**Mass Layoff Statistics**

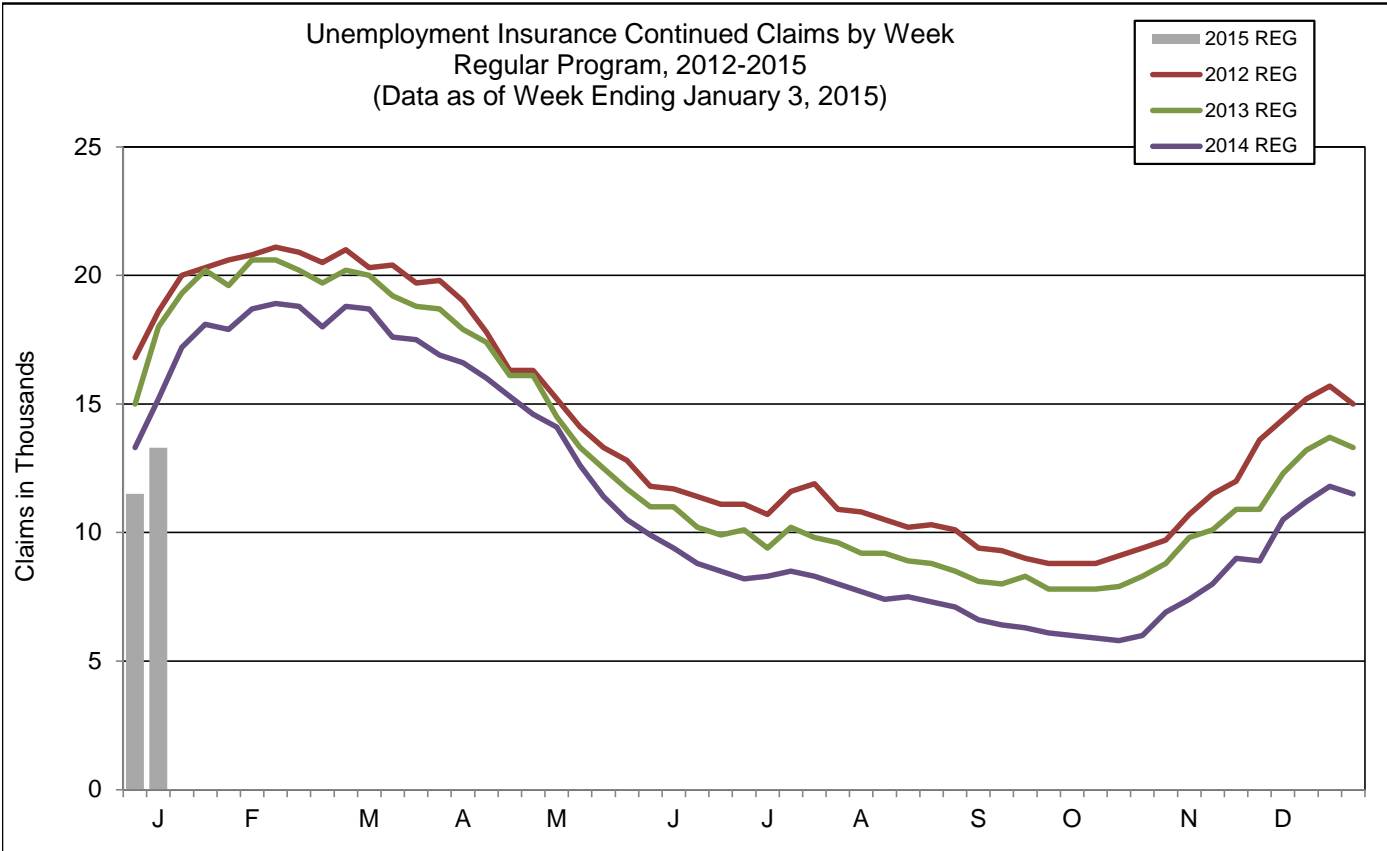
**January 3, 2015**

Year to Date	Number of Unique Employers	Number of Times Employers had 5 or more Initial Claims	Number of Initial Claims
2015	52	52	624
2014	68	68	824
Percent Change	▼ -23.5%	▼ -23.5%	▼ -24.3%

Unemployment Insurance Initial Claims by Week  
 Regular Program, 2012-2015  
 (Data as of Week Ending January 3, 2015)

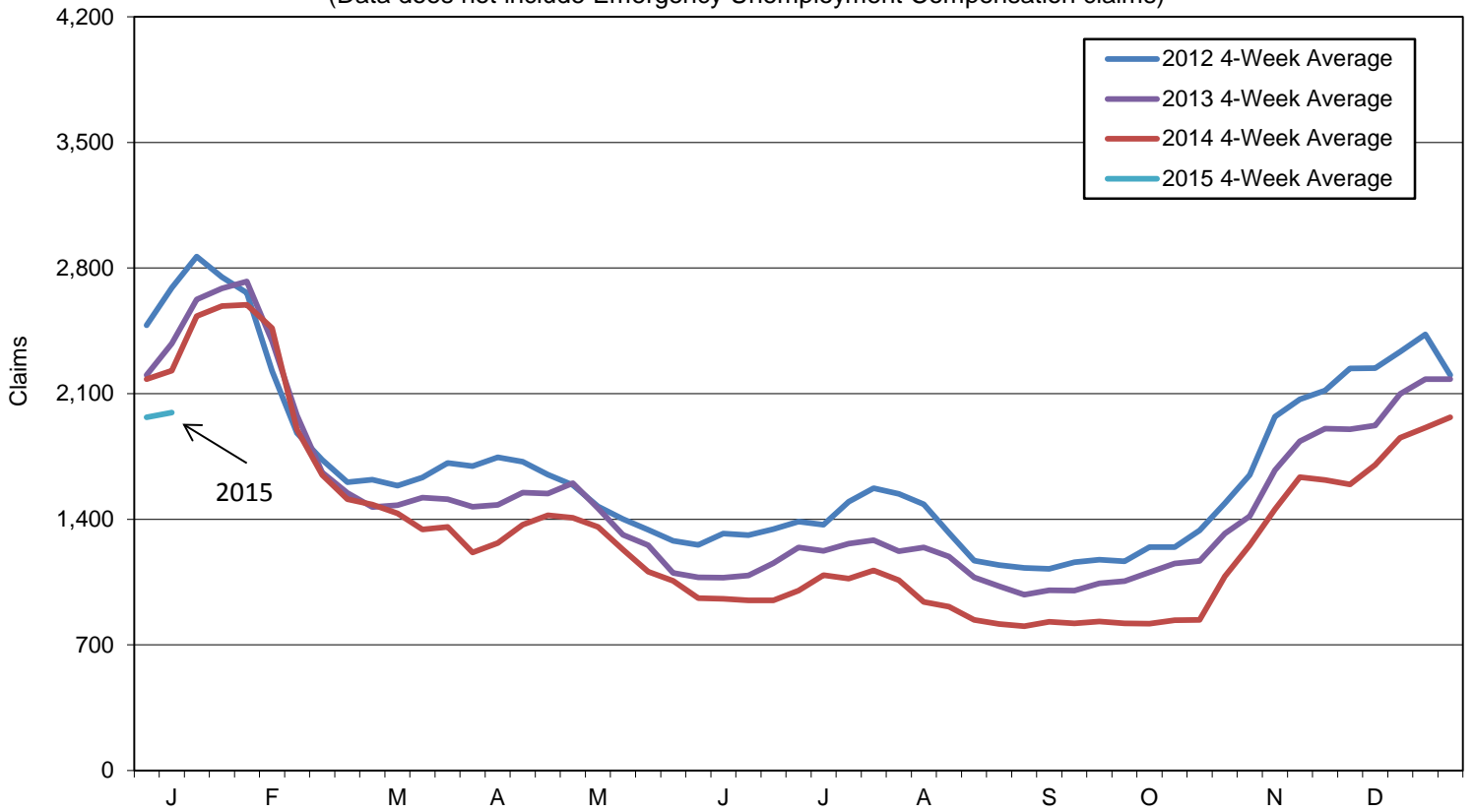


Unemployment Insurance Continued Claims by Week  
 Regular Program, 2012-2015  
 (Data as of Week Ending January 3, 2015)

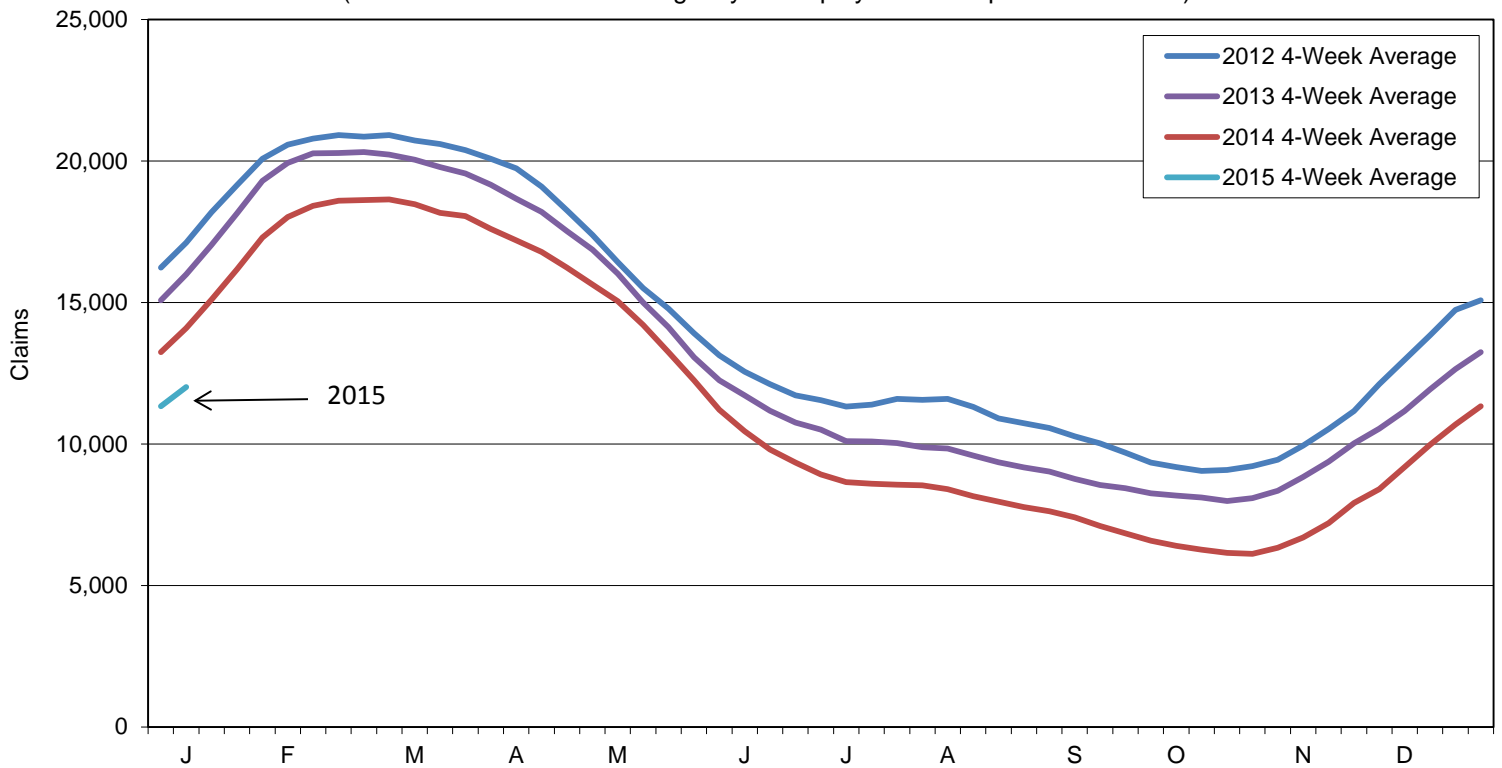


Note: Charts do not include data from Dislocated Worker Benefits, Trade Readjustment Allowance, and Unemployment Compensation for Federal Employees & Military programs due to their small numbers.

Initial Claims for Unemployment Compensation in Maine  
 4-Week Moving Averages for Regular Program  
 (Data does not include Emergency Unemployment Compensation claims)



Continued Claims for Unemployment Compensation in Maine  
 4-Week Moving Averages for Regular Program  
 (Data does not include Emergency Unemployment Compensation claims)



Note: Charts do not include data from Dislocated Worker Benefits, Trade Readjustment Allowance, and Unemployment Compensation for Federal Employees & Military programs due to their small numbers.