

12-6-2014

Weekly Gram Unemployment Compensation Data 12-6-2014

Maine Center for Workforce Research and Information

Maine Department of Labor

Follow this and additional works at: http://digitalmaine.com/cwri_docs

Recommended Citation

Maine Center for Workforce Research and Information and Maine Department of Labor, "Weekly Gram Unemployment Compensation Data 12-6-2014" (2014). *Center for Workforce Research and Information Documents*. Paper 188.
http://digitalmaine.com/cwri_docs/188

This Text is brought to you for free and open access by the Labor at Maine State Documents. It has been accepted for inclusion in Center for Workforce Research and Information Documents by an authorized administrator of Maine State Documents. For more information, please contact statedocs@maine.gov.

Initial and Continued Claims by Program for Week Ending: 12/06/2014

Program		Current Week Claims	Last Week			Last Year		
			Claims	Net Change	% Change	Claims	Net Change	% Change
Regular	Initial:	2,212	1,486	▲ 726	48.9	2,352	▼ -140	-6.0
	Continued:	10,508	8,919	▲ 1,589	17.8	12,280	▼ -1,772	-14.4
Emergency Unemployment Compensation 2008 (EUC)	Initial:	0	0	— 0	0.0	192	▼ -192	-100.0
	Continued:	0	0	— 0	0.0	2,080	▼ -2,080	-100.0
Emergency Unemployment Comp. 2008 Tier II (EUCT2)	Initial:	0	0	— 0	0.0	11	▼ -11	-100.0
	Continued:	0	0	— 0	0.0	1,135	▼ -1,135	-100.0
Emergency Unemployment Comp. 2008 Tier III (EUCT3)	Initial:	0	0	— 0	0.0	0	— 0	0.0
	Continued:	0	0	— 0	0.0	10	▼ -10	-100.0
Workshare	Initial:	0	0	— 0	0.0	0	— 0	0.0
	Continued:	0	0	— 0	0.0	11	▼ -11	-100.0
Dislocated Worker Benefits	Initial:	11	8	▲ 3	37.5	13	▼ -2	-15.4
	Continued:	150	182	▼ -32	-17.6	273	▼ -123	-45.1
Trade Readjustment Allowance	Initial:	2	0	▲ 2	0.0	0	▲ 2	0.0
	Continued:	230	205	▲ 25	12.2	62	▲ 168	271.0
Unemployment Compensation for Federal Employees & Military	Initial:	6	3	▲ 3	100.0	7	▼ -1	-14.3
	Continued:	92	83	▲ 9	10.8	156	▼ -64	-41.0
TOTAL ALL PROGRAMS	Initial:	2,231	1,497	▲ 734	49.0	2,575	▼ -344	-13.4
	Continued:	10,980	9,389	▲ 1,591	16.9	16,007	▼ -5,027	-31.4

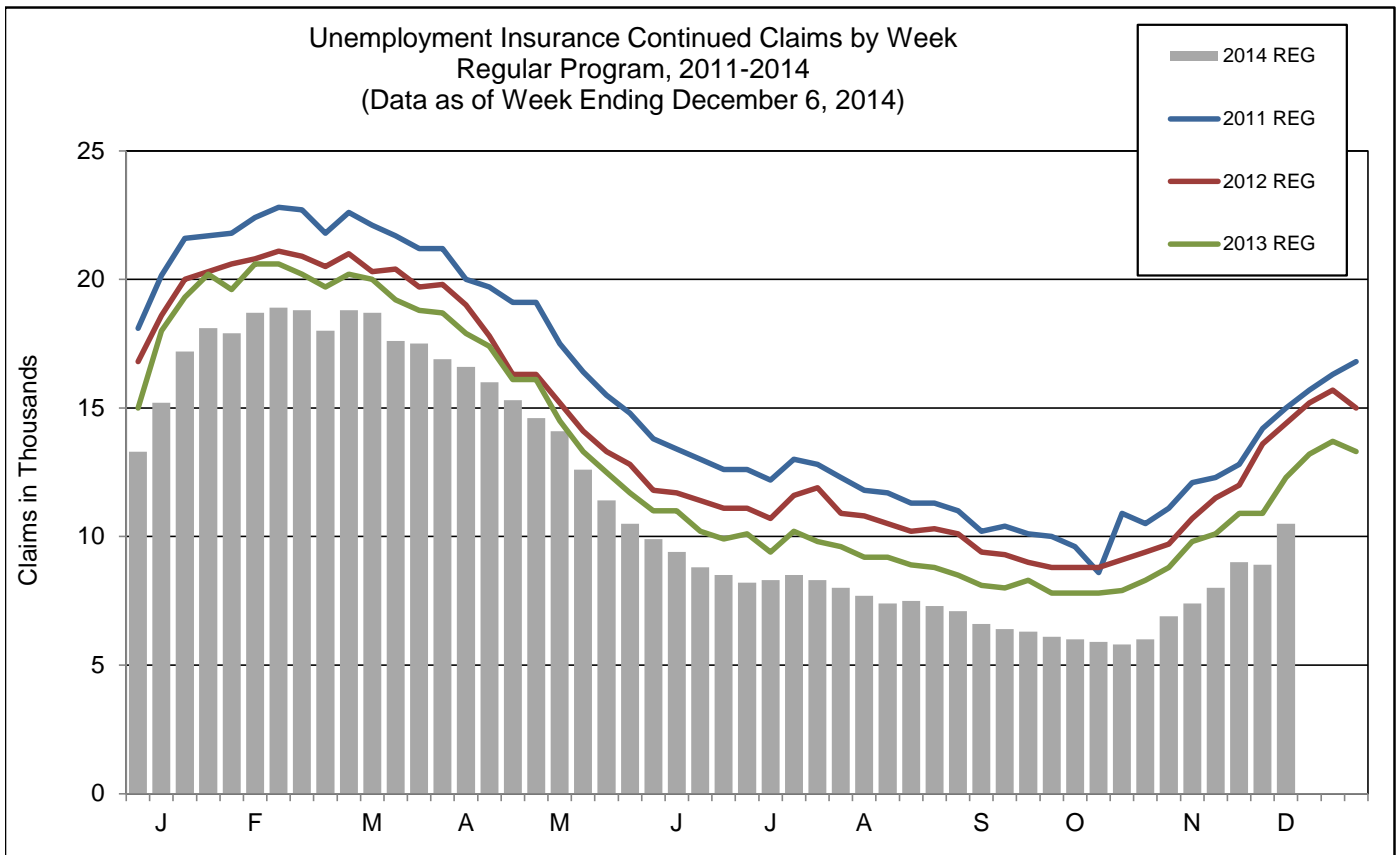
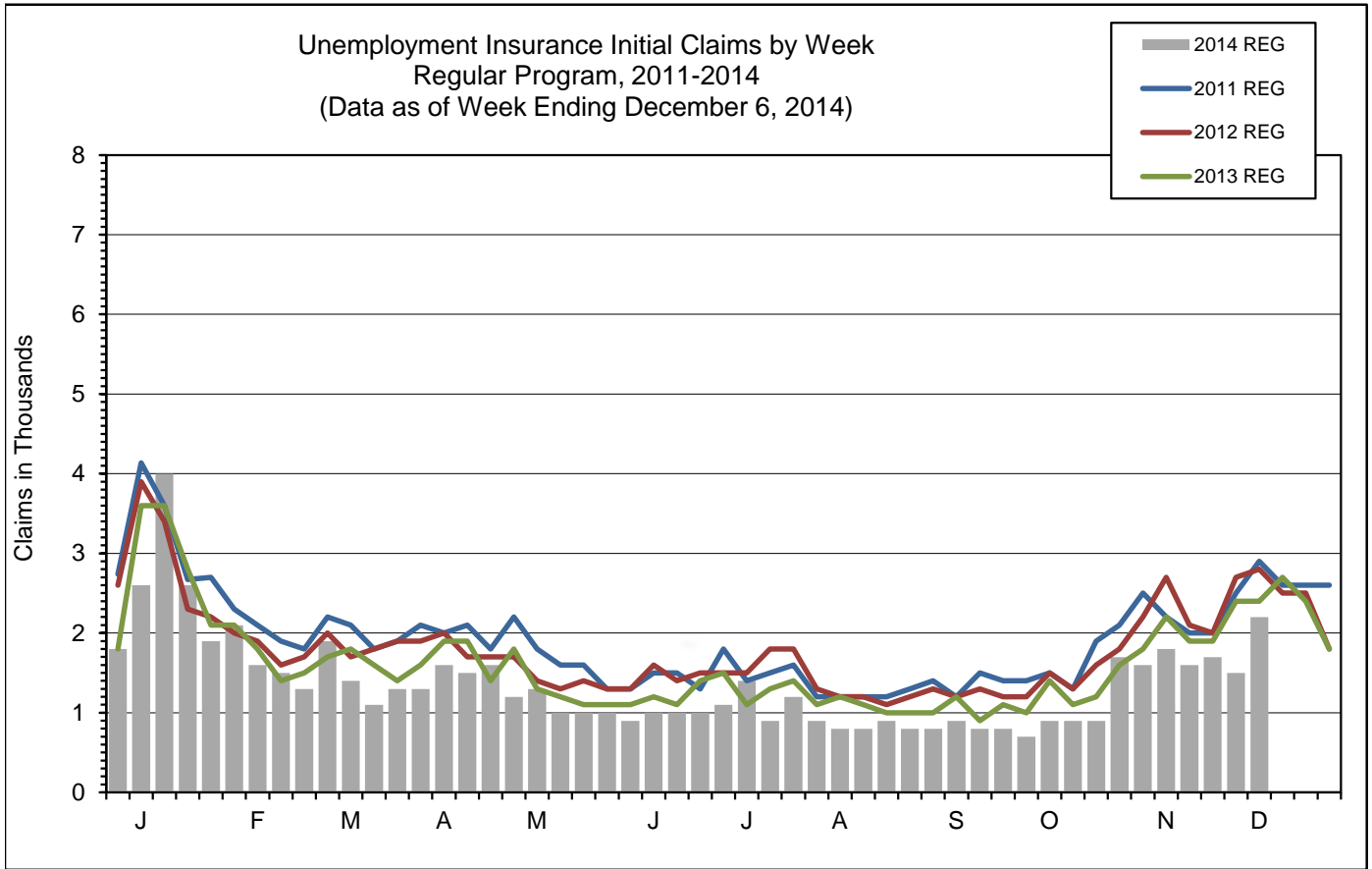
Note: Initial Claims increased due to more layoffs in Construction, Manufacturing, and Administrative & Support & Waste Management & Remediation industries. For DWB and TRA programs, the increase in initial and continued claims are due to claimants in approved training exhausting Regular Benefits. EUC08 expired on 01/01/2014; EUC claims filed are for compensation week ending 12/28/13 or earlier.

UNEMPLOYMENT INSURANCE FINANCIAL DATA FOR WEEK ENDING		11/15/2014
Regular Unemployment Insurance Benefits for Week	\$	1,685,655.36
Emergency Unemployment Compensation 2008	\$	171.00
Dislocated Workers Benefits Amount Paid for Week	\$	56,726.00
Trade Readjustment Allowance Benefits Amount Paid for Week	\$	92,064.26
Federal Programs Benefits Amount Paid for Week	\$	29,339.77
Net Amount of UI Contributions for Week	\$	250,531.53
Balance Available for UI Benefits as of Week Ending	\$	329,813,681.42
Net Benefits Paid Chargeable to Unemployment Compensation Fund for October 2014	\$	5,867,930.61
Note: Regular Benefits paid include reimbursable payments and other disbursements which are reported under the UI Program. Amount Paid may represent Continued Claims tallied in a prior week.		
Extended Benefits Triggers On when the 13-Week Average Insured Unemployment Rate (IUR) reaches 5% and the IUR is 120% or higher than the last 2 years.		
13-Week Average Insured Unemployment Week Ending 11/29/2014		1.27%
120% Threshold - Current IUR as a percent of the average IUR rate in the prior 2 years.		72.77%
IUR is calculated by taking the average of the Continued Claims claims over a rolling 13 week period divided by Covered Employment. Covered Employment is employment that falls under the Unemployment Insurance Program.		

Mass Layoff Statistics

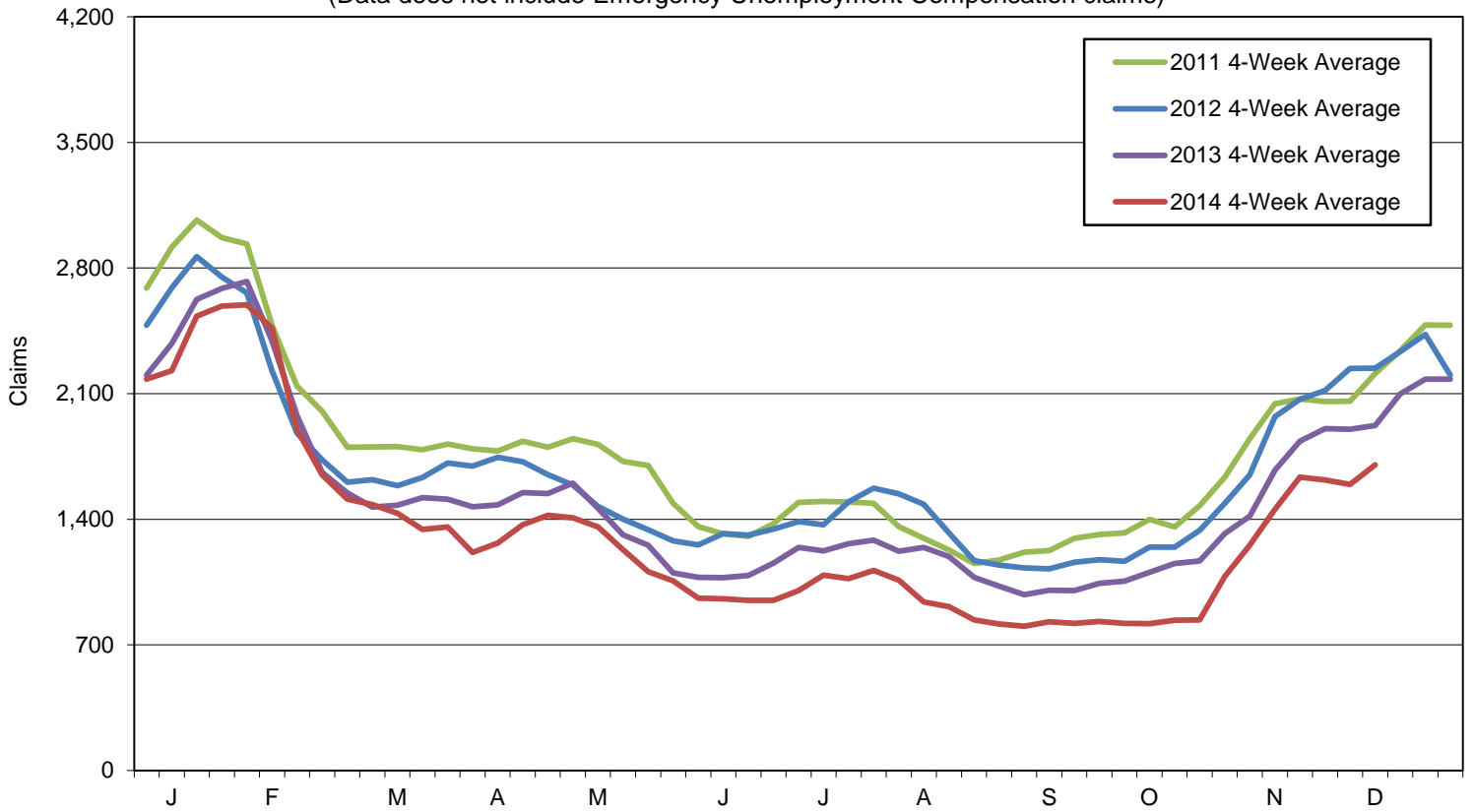
December 6, 2014

Year to Date	Number of Unique Employers	Number of Times Employers had 5 or more Initial Claims	Number of Initial Claims
2014	392	1,199	12,600
2013	417	1,404	14,881
Percent Change	▼ -6.0%	▼ -14.6%	▼ -15.3%

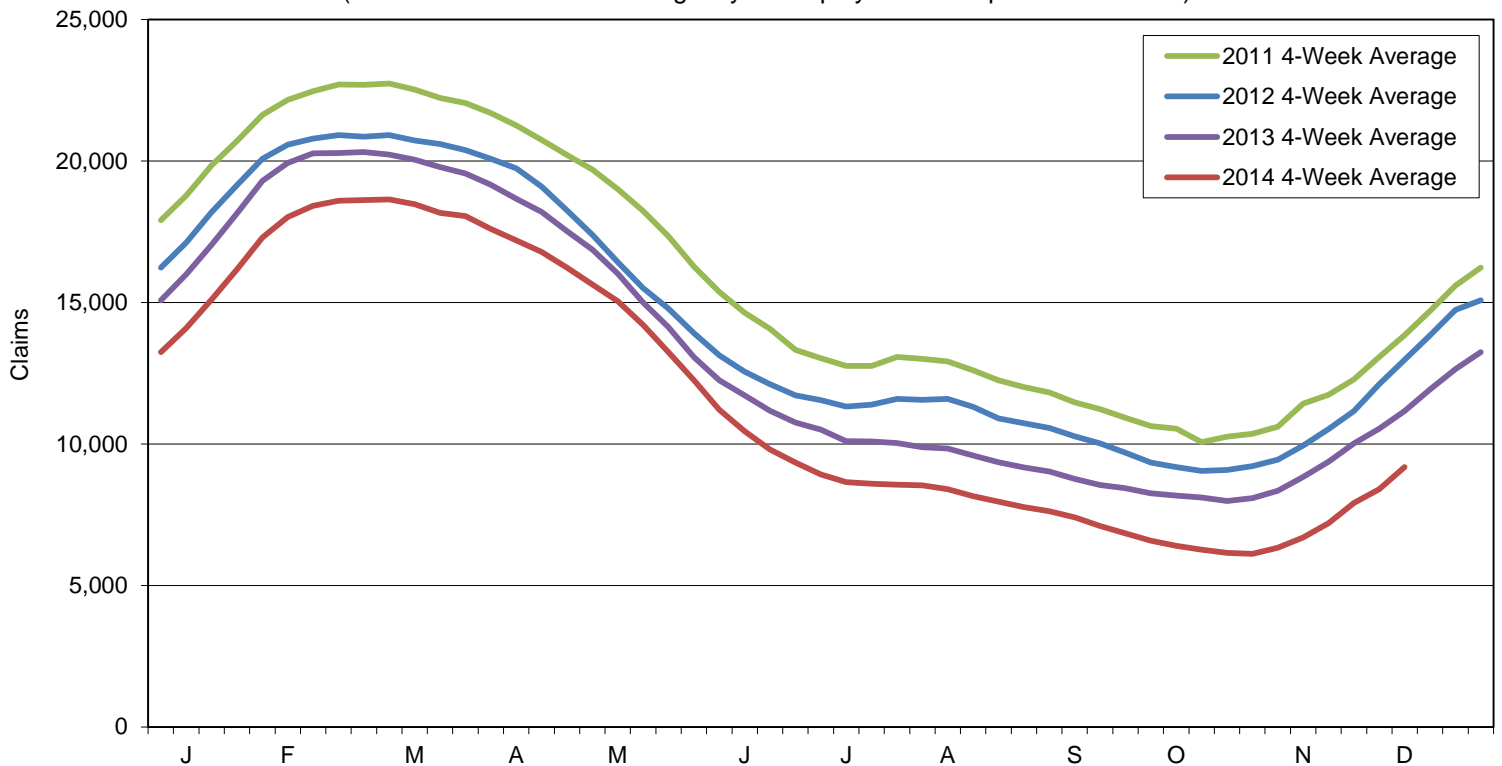


Note: Charts do not include data from Dislocated Worker Benefits, Trade Readjustment Allowance, and Unemployment Compensation for Federal Employees & Military programs due to their small numbers.

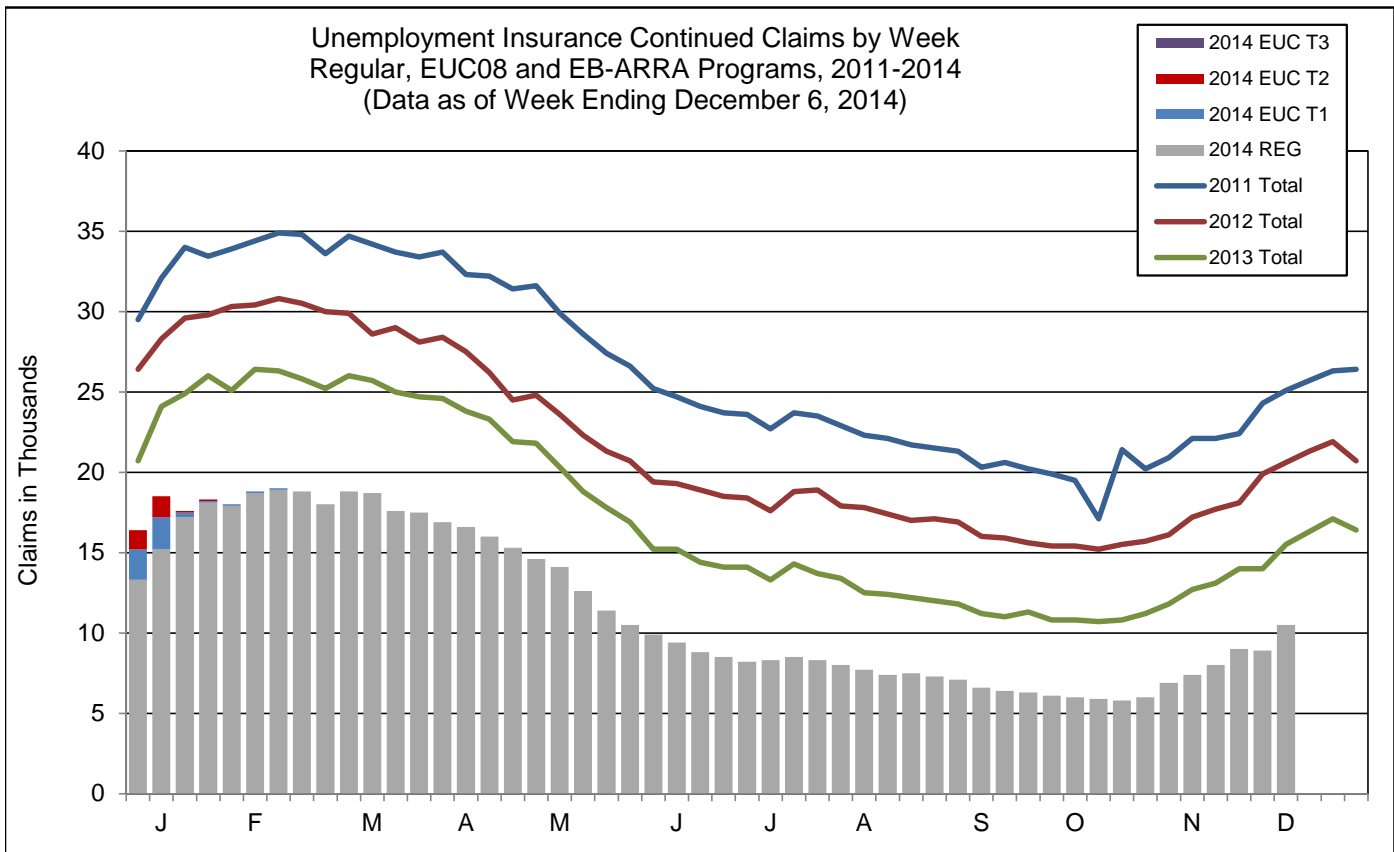
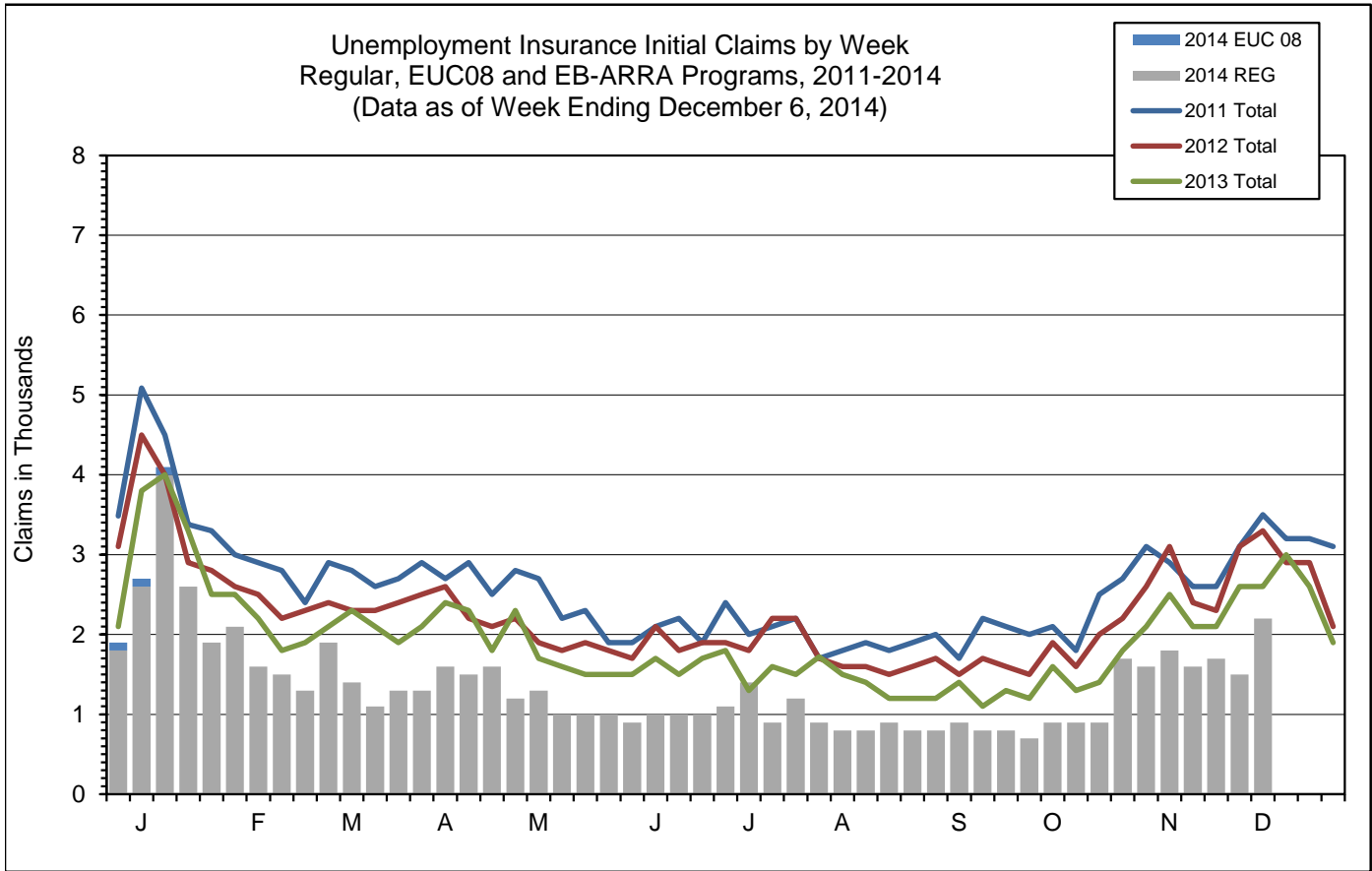
Initial Claims for Unemployment Compensation in Maine
 4-Week Moving Averages for Regular Program
 (Data does not include Emergency Unemployment Compensation claims)



Continued Claims for Unemployment Compensation in Maine
 4-Week Moving Averages for Regular Program
 (Data does not include Emergency Unemployment Compensation claims)

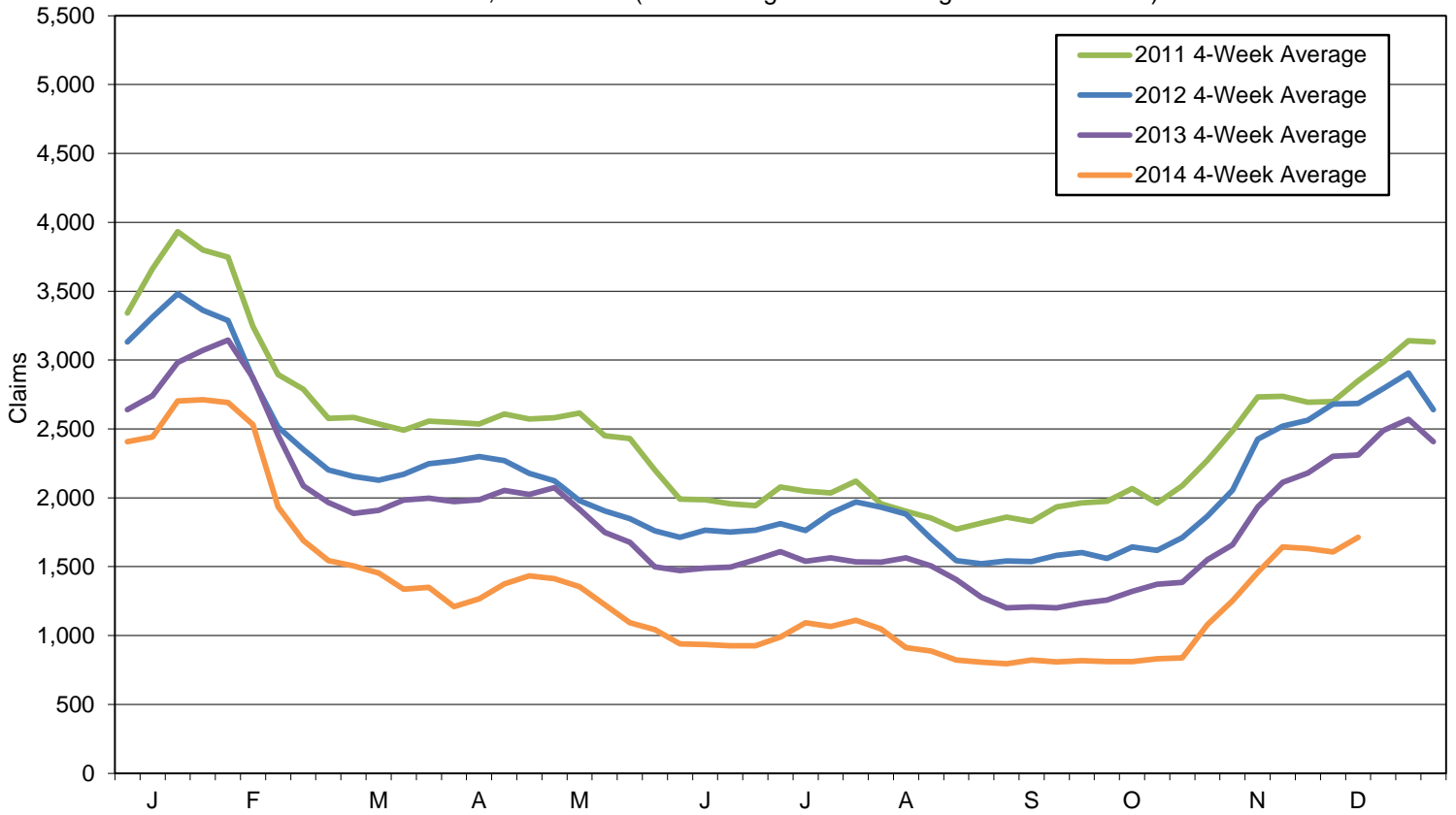


Note: Charts do not include data from Dislocated Worker Benefits, Trade Readjustment Allowance, and Unemployment Compensation for Federal Employees & Military programs due to their small numbers.



Note: Initial claims for all Tiers (1-3) are included in EUC08 data. Charts do not include data from Dislocated Worker Benefits, Trade Readjustment Allowance, and Unemployment Compensation for Federal Employees & Military programs due to their small numbers. Effective date for EUC08 Tier 1 - 07/06/08, EUC08 Tier 2 - 02/15/2009, EUC08 Tier 3 - 11/08/2009, Extended Benefits were payable from 03/29/2009 - 02/18/2012 and Federal Additional Compensation ended - December 11, 2010.

Initial Claims 4-Week Moving Average for Regular, EUC08, and EB-ARRA Unemployment Insurance, Maine, 2011-2014 (Data through Week Ending Date 12/06/2014)



Continued Claims 4-Week Moving Average for Regular, EUC08, and EB-ARRA Unemployment Insurance, Maine, 2011-2014 (Data through Week Ending Date 12/06/2014)

