

**Initial and Continued Claims by Program for Week Ending: 11/22/2014**

Program		Current Week Claims	Last Week			Last Year		
			Claims	Net Change	% Change	Claims	Net Change	% Change
Regular	Initial:	1,696	1,637	▲ 59	3.6	1,944	▼ -248	-12.8
	Continued:	8,968	7,963	▲ 1,005	12.6	10,932	▼ -1,964	-18.0
Emergency Unemployment Compensation 2008 (EUC)	Initial:	0	0	— 0	0.0	245	▼ -245	-100.0
	Continued:	0	0	— 0	0.0	2,125	▼ -2,125	-100.0
Emergency Unemployment Comp. 2008 Tier II (EUCT2)	Initial:	0	0	— 0	0.0	13	▼ -13	-100.0
	Continued:	0	0	— 0	0.0	986	▼ -986	-100.0
Emergency Unemployment Comp. 2008 Tier III (EUCT3)	Initial:	0	0	— 0	0.0	0	— 0	0.0
	Continued:	0	0	— 0	0.0	6	▼ -6	-100.0
Workshare	Initial:	0	0	— 0	0.0	0	— 0	0.0
	Continued:	0	0	— 0	0.0	11	▼ -11	-100.0
Dislocated Worker Benefits	Initial:	10	8	▲ 2	25.0	12	▼ -2	-16.7
	Continued:	210	145	▲ 65	44.8	328	▼ -118	-36.0
Trade Readjustment Allowance	Initial:	0	0	— 0	0.0	0	— 0	0.0
	Continued:	227	211	▲ 16	7.6	107	▲ 120	112.1
Unemployment Compensation for Federal Employees & Military	Initial:	12	9	▲ 3	33.3	8	▲ 4	50.0
	Continued:	92	80	▲ 12	15.0	147	▼ -55	-37.4
<b>TOTAL ALL PROGRAMS</b>	Initial:	<b>1,718</b>	<b>1,654</b>	<b>▲ 64</b>	<b>3.9</b>	<b>2,222</b>	<b>▼ -504</b>	<b>-22.7</b>
	Continued:	<b>9,497</b>	<b>8,399</b>	<b>▲ 1,098</b>	<b>13.1</b>	<b>14,642</b>	<b>▼ -5,145</b>	<b>-35.1</b>

**Note:** For DWB and TRA programs, the increase in initial and continued claims are due to claimants in approved training exhausting Regular Benefits. EUC08 expired on 01/01/2014; EUC claims filed are for compensation week ending 12/28/13 or earlier.

**UNEMPLOYMENT INSURANCE FINANCIAL DATA FOR WEEK ENDING**

**11/01/2014**

Regular Unemployment Insurance Benefits for Week	\$	1,266,781.45
Emergency Unemployment Compensation 2008	\$	-9,127.17
Dislocated Workers Benefits Amount Paid for Week	\$	63,100.00
Trade Readjustment Allowance Benefits Amount Paid for Week	\$	92,870.29
Federal Programs Benefits Amount Paid for Week	\$	46,295.42
Net Amount of UI Contributions for Week	\$	2,451,318.06
Balance Available for UI Benefits as of Week Ending	\$	314,213,427.91
Net Benefits Paid Chargeable to Unemployment Compensation Fund for October 2014	\$	5,867,930.61

**Note:** Regular Benefits paid include reimbursable payments and other disbursements which are reported under the UI Program. Amount Paid may represent Continued Claims tallied in a prior week.

**Extended Benefits Triggers On when the 13-Week Average Insured Unemployment Rate (IUR) reaches 5% and the IUR is 120% or higher than the last 2 years.**

13-Week Average Insured Unemployment Week Ending 11/15/2014	1.20%
120% Threshold - Current IUR as a percent of the average IUR rate in the prior 2 years.	72.94%

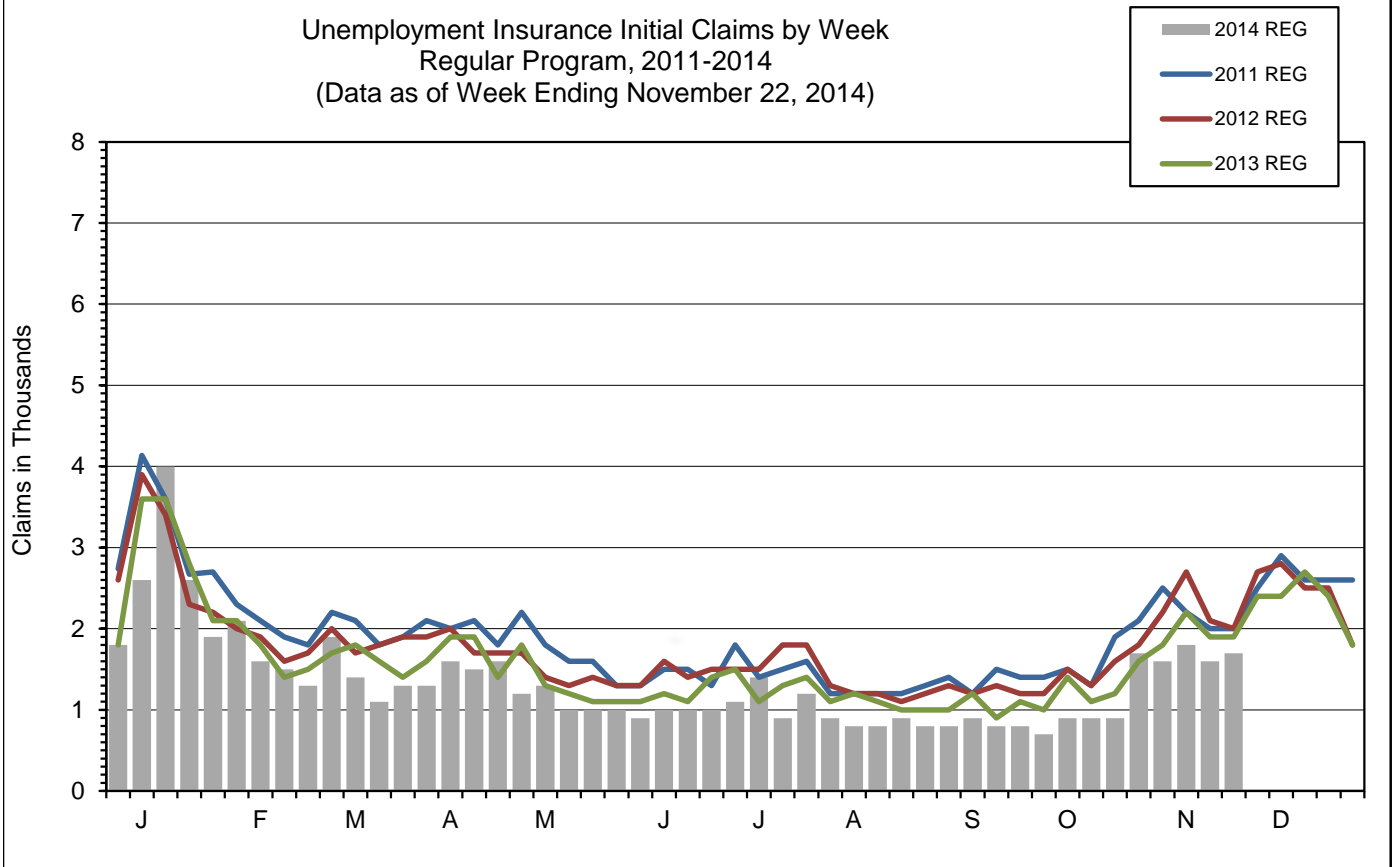
IUR is calculated by taking the average of the Continued Claims claims over a rolling 13 week period divided by Covered Employment. Covered Employment is employment that falls under the Unemployment Insurance Program.

**Mass Layoff Statistics**

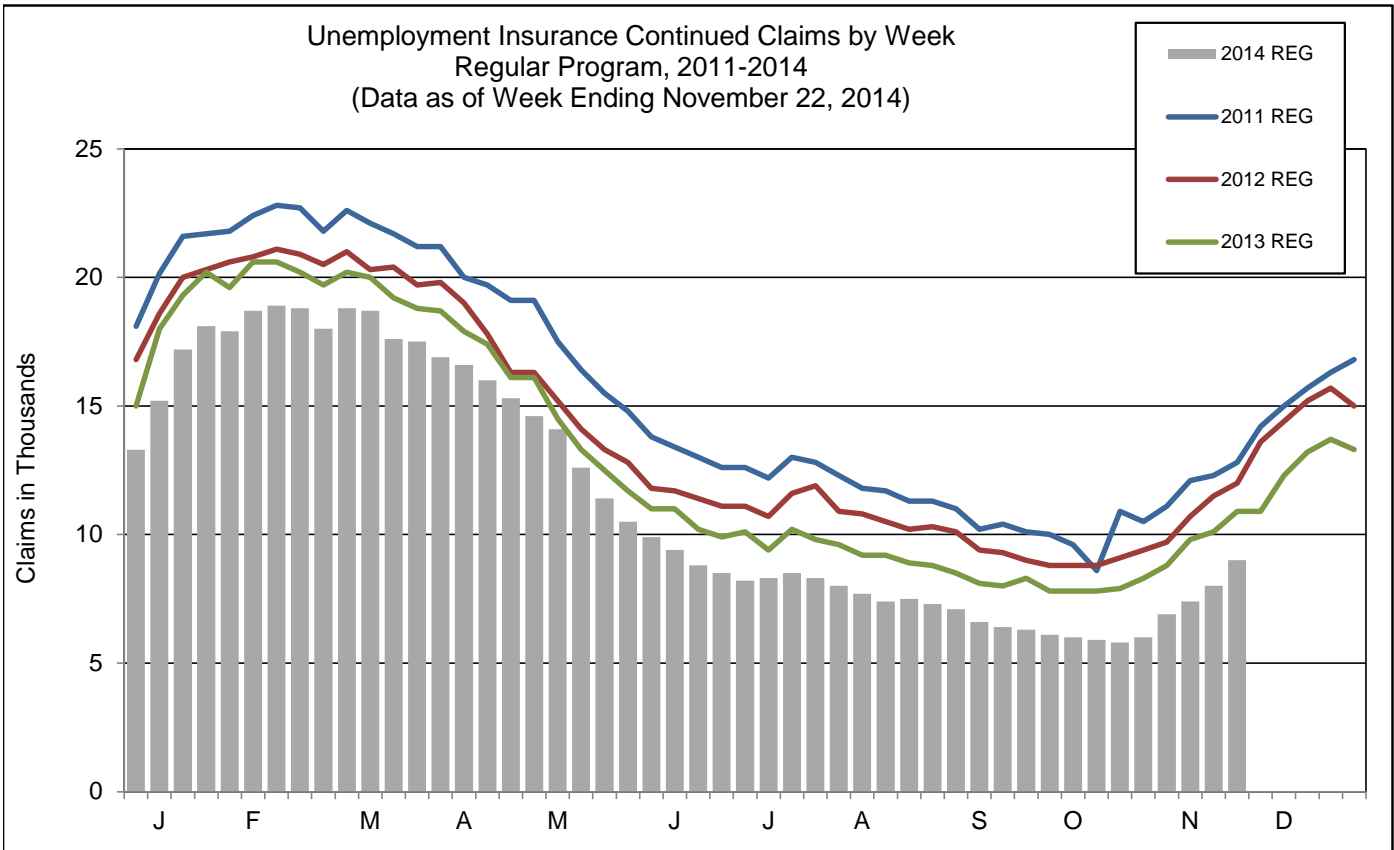
**November 22, 2014**

Year to Date	Number of Unique Employers	Number of Times Employers had 5 or more Initial Claims	Number of Initial Claims
2014	365	1,115	11,783
2013	398	1,319	13,972
Percent Change	▼ -8.3%	▼ -15.5%	▼ -15.7%

Unemployment Insurance Initial Claims by Week  
Regular Program, 2011-2014  
(Data as of Week Ending November 22, 2014)

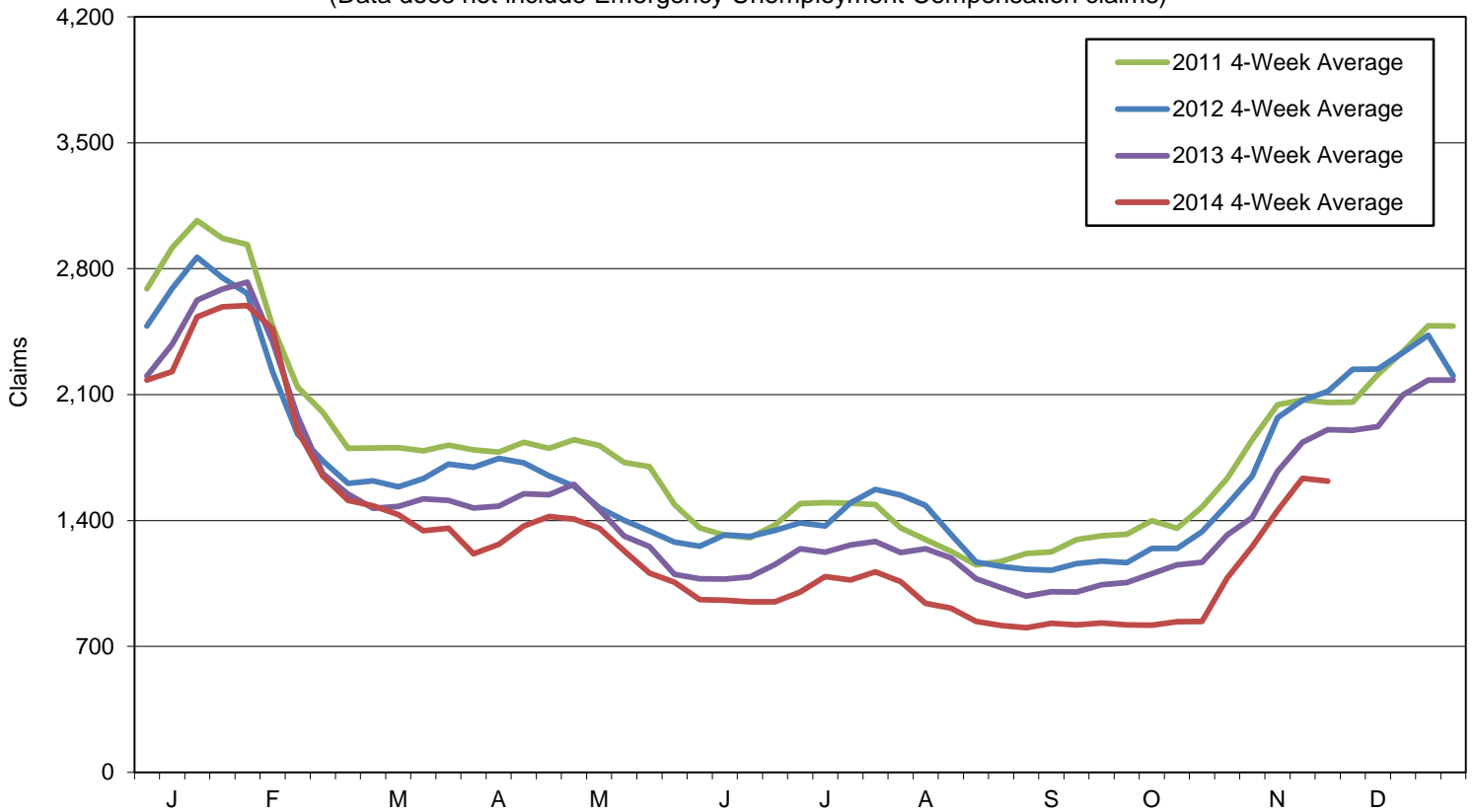


Unemployment Insurance Continued Claims by Week  
Regular Program, 2011-2014  
(Data as of Week Ending November 22, 2014)

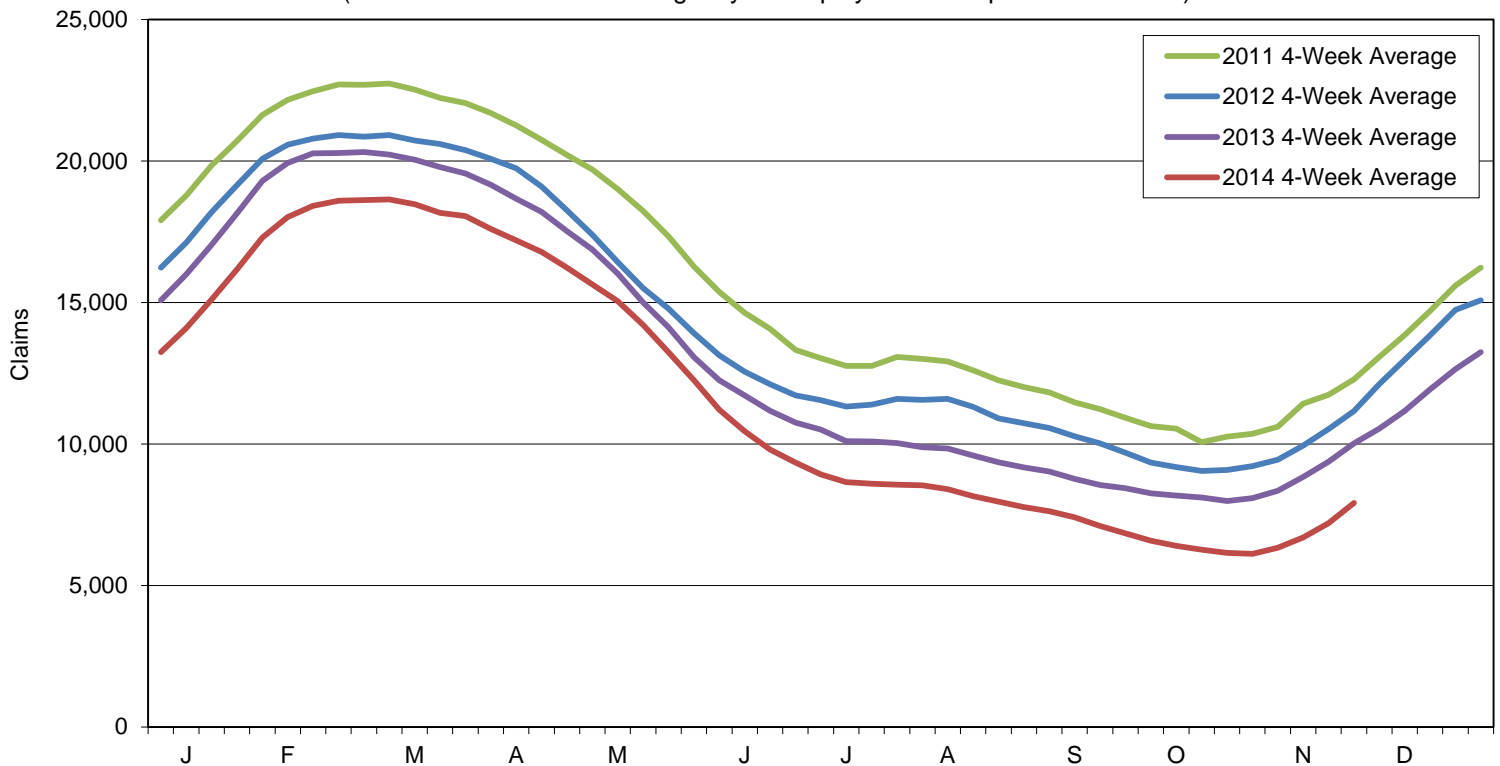


Note: Charts do not include data from Dislocated Worker Benefits, Trade Readjustment Allowance, and Unemployment Compensation for Federal Employees & Military programs due to their small numbers.

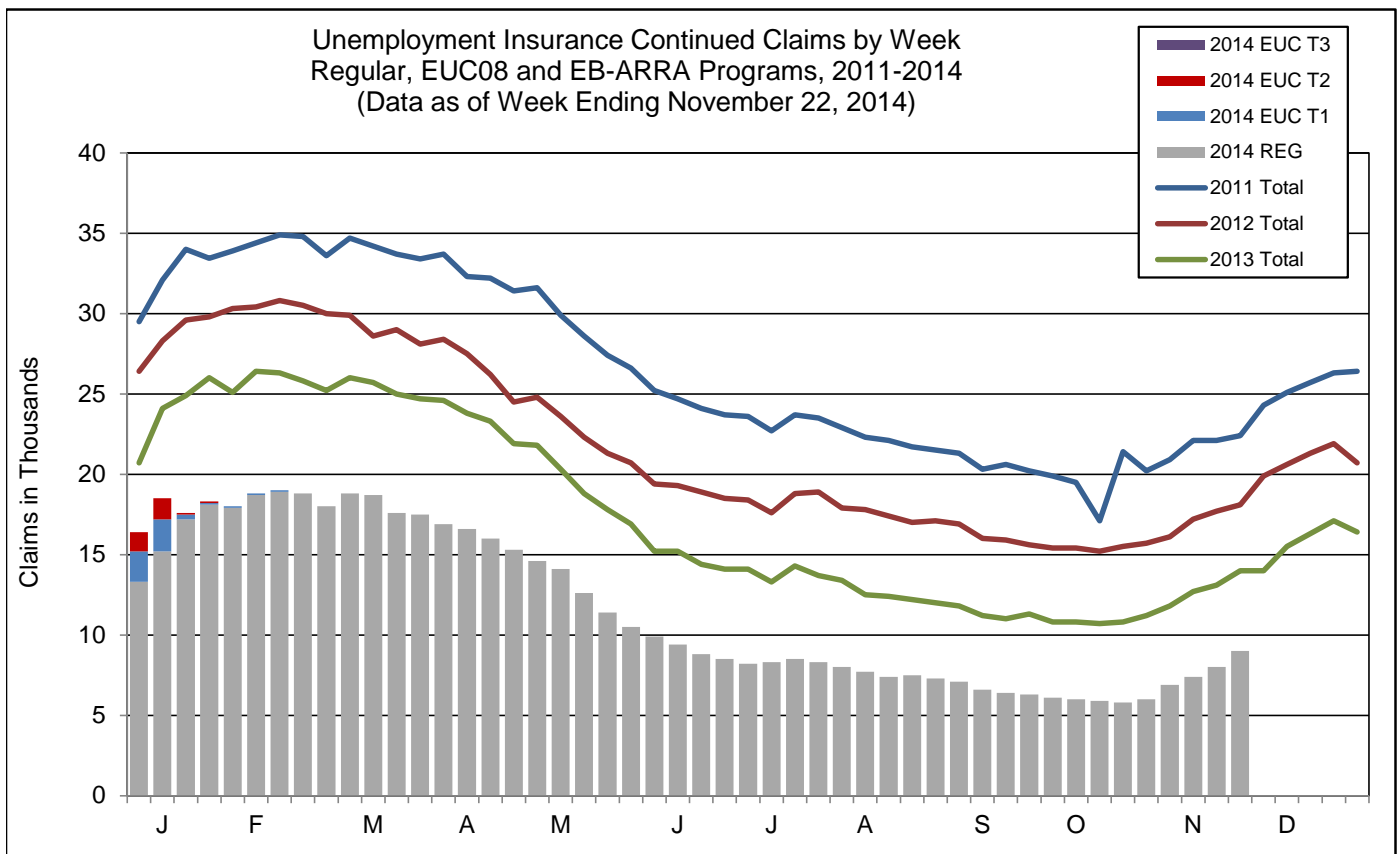
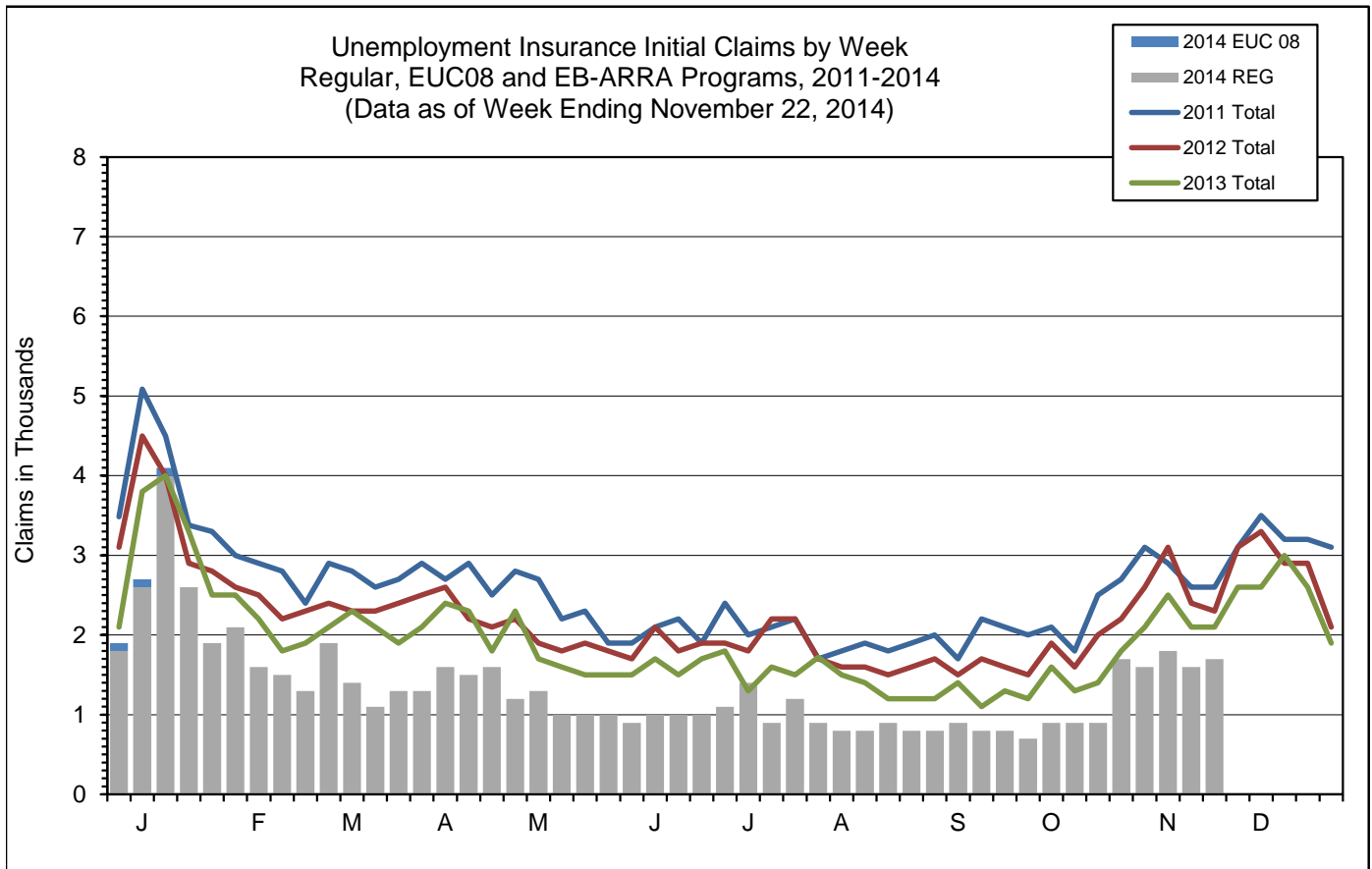
Initial Claims for Unemployment Compensation in Maine  
4-Week Moving Averages for Regular Program  
(Data does not include Emergency Unemployment Compensation claims)



Continued Claims for Unemployment Compensation in Maine  
4-Week Moving Averages for Regular Program  
(Data does not include Emergency Unemployment Compensation claims)

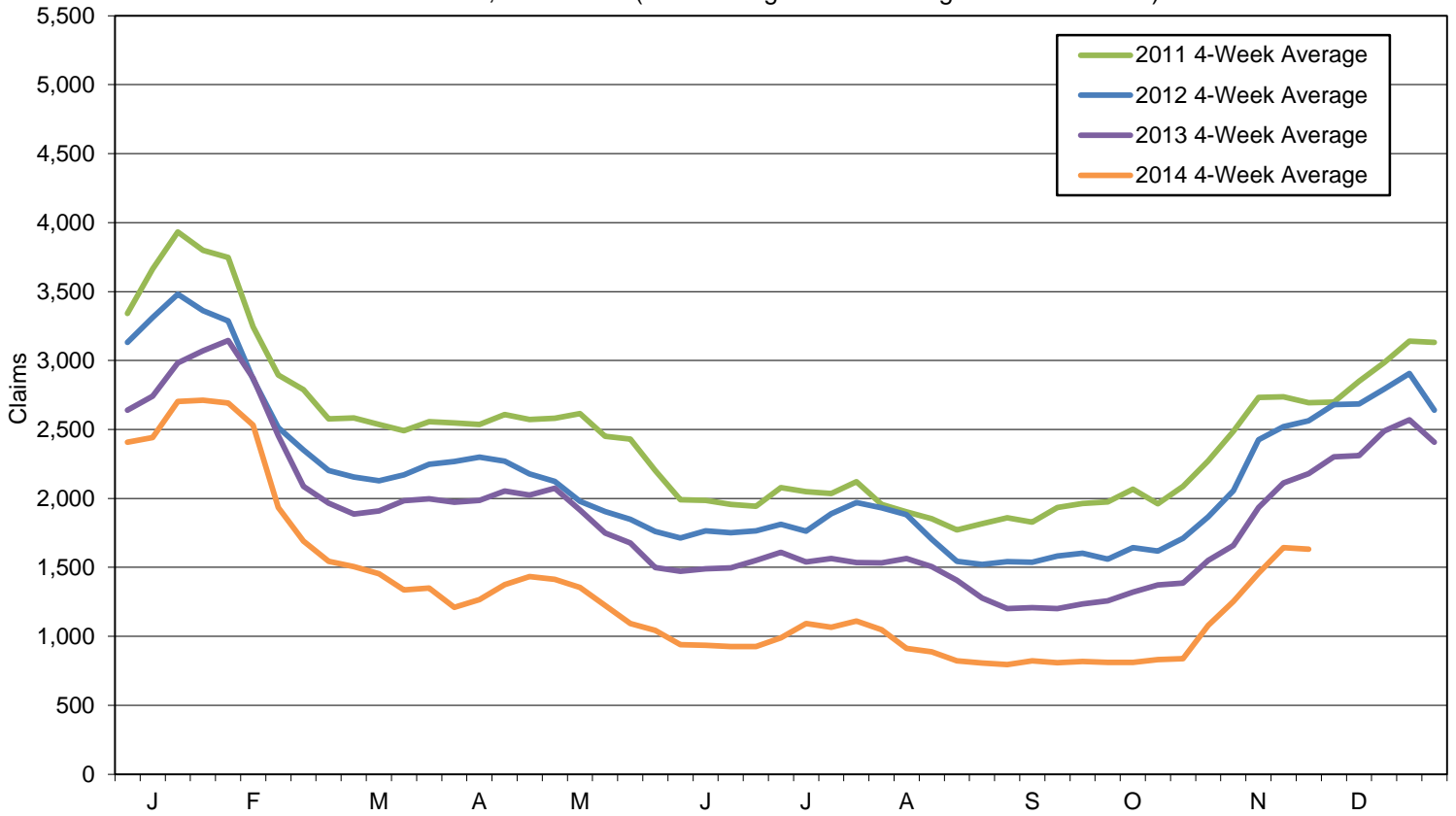


Note: Charts do not include data from Dislocated Worker Benefits, Trade Readjustment Allowance, and Unemployment Compensation for Federal Employees & Military programs due to their small numbers.



Note: Initial claims for all Tiers (1-3) are included in EUC08 data. Charts do not include data from Dislocated Worker Benefits, Trade Readjustment Allowance, and Unemployment Compensation for Federal Employees & Military programs due to their small numbers. Effective date for EUC08 Tier 1 - 07/06/08, EUC08 Tier 2 - 02/15/2009, EUC08 Tier 3 - 11/08/2009, Extended Benefits were payable from 03/29/2009 - 02/18/2012 and Federal Additional Compensation ended - December 11, 2010.

Initial Claims 4-Week Moving Average for Regular, EUC08, and EB-ARRA Unemployment Insurance, Maine, 2011-2014 (Data through Week Ending Date 11/22/2014)



Continued Claims 4-Week Moving Average for Regular, EUC08, and EB-ARRA Unemployment Insurance, Maine, 2011-2014 (Data through Week Ending Date 11/22/2014)

