

# Summertime in the Belgrades



... Serving the Central Maine Lakes & Kennebec River Corridor

VOLUME 24, NUMBER 2

## Where Would We Be Without Camps?

by Esther J. Perne

There's a word in this region that is loaded with definitions, a word that means something - but not the same things - to almost everyone, that has fueled the local economy for well over a century and that has formed the best memories of a lifetime for generations of vacationers and visitors and year-rounders who had a camp connection. Today the word, the memories the connections, the momentum of the movement continue. And today, we know that one of the most missed summer outlet during the covid pandemic was the availability of summer camps.

Although as originally settled the Belgrade region was primarily farmland, especially apple orchards, and all the industries were driven by dams on the lakes the area was destined to become a mecca for the camp culture - fishing camps, youth camps, family camps, specialty camps, sports camps and most recently (and thankfully for working parents) numerous day camps.

Perhaps the camp trend began with the train line north with stations in both Belgrade Depot and North Belgrade. The train brought so-called sportsmen from the cities in search of good fishing and the trout and bass they caught not only put the Belgrades on the map but turned the area into a summer resort where whole families stayed in the large hotels and camp colonies and in the dozen plus fishing camps that supplied guides, boats, gear and a 5 am wakeup bell.

Just as the Belgrades was becoming established on the map for fishing, the country, especially the northeast, was experiencing a wakeup



Photo courtesy Penobscot Marine Museum

call to the unhealthy influences of too much indooriness. It also was facing the challenge that the receding agrarian economy and the long summer school vacation designed for youth employment on the farms was leaving a lot of active youth with nothing to do. Bit by bit pastoral leaders experimented with variations on the almost unknown concept of camping. The concept worked and it led to the nature-oriented, wholesome lifestyle, overnight youth camps of today.

The first such youth (boys) camp in the United States took place in 1876; the first in Maine in 1896; the first in the Belgrades - Camp Merryweather on Great Pond - in 1900. Pine

Island Camp, also on Great Pond was established in 1902. Camps for girls opened soon after the boys camps. Camp Runoia on Great Pond opened in 1907.

Since 1900, dozens of youth camps have operated and gone out of business in the Belgrades; well over a dozen will be open in the extended area this season.

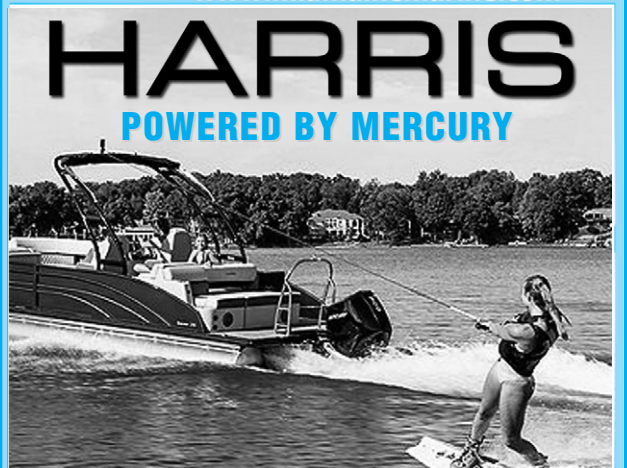
Also open in the area this season will be many day camps and sports camps and specialty camps, community camps and rec camps, all under such varied and diverse schedules and terms that, well, it's just good to have them back.

In part and maybe because of the focus of the

*Continued on page 2*

**Mid-Maine Marine Inc.**  
885 Kennedy Memorial Drive, Oakland, ME 04963  
1/2 Mile West of Exit 127 off I-95 • 1-800-649-2628  
[www.midmainmarine.com](http://www.midmainmarine.com)

**HARRIS**  
POWERED BY MERCURY



**CATCH YOUR NEXT ADVENTURE**

Join us...and help  
protect our lakes!  
Please support our  
Loon Preservation Project.



**Belgrade Lakes Association**  
137 Main Street, Belgrade Lakes, Maine 04918  
207-512-5150 • [www.belgradelakesassociation.org](http://www.belgradelakesassociation.org)

**MIFF**  
**25<sup>TH</sup> MAINE INTERNATIONAL FILM FESTIVAL**  
July 8-17, 2022

**PASSES AND PACKAGES  
NOW AVAILABLE!**

**MIFF.ORG**







Continued from page 1

fishing camps and the influence of the youth camps, as well as the affordability of personal transportation and the opening of main roads to the Belgrades and back roads and camp roads leading to lakefront lots, individual camps - the family camp - became the norm.

Family camps speak for themselves. Everyone who knows about camps, knows what their family's or their extended family's or someone who knows someone's family camp is. Where would the Belgrades be without them?



Go to page 10 for Dick Greenan's loon photo gallery.

# Proposed Great Pond Herbicide Treatment

Following ten years of dedicated manual plant removal projects and investments totaling \$1.4 million, the Belgrade Lakes Association and other lake organizations in the Belgrades, community entities, commercial removal companies, 3 Maine State departments (Environmental Protection, Conservation, and Inland Fisheries and Wildlife), as well as numerous interested individuals are coordinating efforts to realize the next step in prevention management.

The aquatic invasive plant culprit in focus is variable leaf water milfoil which has prompted extensive lake monitoring throughout the State, is the primary target for the Belgrade lakes comprehensive summer-long boat inspections and was identified in 2010 in Great Pond in Great Meadow Stream from Route 225 into North Bay. Subsequently the plant has been identified in the eastern cove of North Bay, in the Rome Trout Brook and in Robbins Mill Stream and there has been significant regrowth in Great Meadow Stream.

The targeted treatment, with the chemical ProcellaCOR EC, should help keep the ecologically, recreationally and economically damaging milfoil infestation from spreading throughout Great Pond to Long Pond and Lake Messalonskee - and the connecting streams. Treatment efficacy, water quality testing and public outreach before and after the treatment will be monitored under the auspices of the 7 Lakes Alliance, Aquatic Invasive Program

Director Sharon Mann (603 205-3912).

The first public meeting was held in May with John McPhedran, invasive aquatic plant biologist, Department of Environmental Protection. McPhedran explained that although the department's priority is rapid response to new infestations, resorting to herbicide treatment will reduce the plant population to a level that can be managed. According to Mcphedran's presentation, of the six infected lakes in Maine that have been chemically treated, three have been successes.

"It's a serious endeavor and one we don't take lightly," he summarized, "but one we feel is necessary."

The treatment is projected for June 2022 or July. There are no restrictions for drinking, swimming, fishing and other recreational uses of the lake water. No swimming is advised the day (and area) of treatment. Treated areas will be posted.

Meanwhile, Curly Leaf Pondweed, a highly invasive, aggressive, aquatic, perennial weed has been discovered in and is being removed from the Serpentine near the East Pond dam. Boaters are requested to avoid that 1/2-mile area.

Plant paddles for East and North Ponds are being scheduled, as well as through the 7 Lakes Alliance. For more information call 495-6039 or visit [www.7lakesalliance.org](http://www.7lakesalliance.org).



## Home insurance, made to measure.

Generations of Belgrade Lakes Region families have looked to GHM Insurance for a personal approach bringing peace of mind. Our experienced professionals create customized insurance plans designed around your needs, not what's worked for someone else.

Call today to find out how we can help you protect your home & auto, boat, RV and more. Insurance for your business, too, as well as health & life insurance, including Medicare.

51 Main Street, Waterville, Maine 04901  
800-244-9046 | [ghmagency.com](http://ghmagency.com)



### Martha Ballard "Delivered" THE MAYOR'S COMMITTEE FOR MARTHA BALLARD'S COMMEMORATION AT MILL PARK PRESENTS: AN EVENING IN HONOR OF MARTHA BALLARD

June 15th, 2022 Doors Open at 5:30pm  
Calumet Club

334 West River Rd, Augusta

- Doors open at 5:30pm and will remain open through the end of the film.
- Hors D'oeuvres until 7pm.
- Cash Bar all night with a silent auction and other fundraising activities.
- At 7pm we will begin a panelist-style discussion, moderated by retired journalist and writer Joseph Owen, with Martha Ballard's 6th great-granddaughters, Glee and Ruth Ballard, and 7th great-granddaughter Diane Dunn, the first female Brigadier General in the history of Maine's National Guard.

Following the panel discussion, there will be a complete showing of the PBS documentary film "A Midwife's Tale"

Get Tickets for the event at:  
[MarthaBallard.com/tickets](http://MarthaBallard.com/tickets)  
or consider making a donation



Scan the QR Code  
to be taken to  
the ticket page

Find us on  
Facebook  
[facebook.com/marthaballarddelivered](https://facebook.com/marthaballarddelivered)





Table of Contents

Camps, Camps, Camps Make the Belgrades World Go Round..... 1-2

Herbicide Treatment Proposed for Great Pond..... 2

Table of Contents: Topics of a Great Season’s Start..... 3

From Book Reading to Bike Riding..... 3

Our Loon Friends Are Back by Rod Johnson..... 4

Take It Outside: Favorite Times to Fish by Pete Kallin..... 5

Calendar of Events: Something to Do, Somewhere to Go..... 6

Wabanaki Voices with Maria Girouard, Penobscot Nation..... 7

Belgrade Lakes: Many Reasons to Visit..... 7

Map: Getting Around, by Lake and by Land..... 8-9

Call of the Loon and Super Photos by Dick Greenan..... 10

Dining Guide: Dine In, Take Out, Enjoy..... 11

Notebook: Ideas for All Sorts of Things..... 11

Business Directory: For all Those Vacation Time Needs..... 12-13

The Dams Keeper Report: Water Levels in Great Shape..... 13

Books by Martha Barkley: Maine at 200 by Tom Huntington..... 14

Real Estate Update: Ownership Responsibility..... 15

MIFF to Honor Debra Winger..... 15

Bikes for Books

by Jim Webster



Students at Mt. Vernon Elementary School and Belgrade Central School held annual Bikes for Books program events recently. Bikes for Books is a program sponsored by The Masonic Grandlodge of Maine that encourages reading in school and provides bikes as incentive.

Students read as many books as they want over a given time frame, usually a month. After each book a “report” is written by the student and then submitted for a raffle. A student can increase their odds by reading more books, and most do. At the end of the month a presentation assembly occurs where each class is brought together and a raffle occurs. One girl’s bike and one boy’s bike are given out to students in each class.

An informal poll showed that over half of the students who won bicycles did not have one. One of the second grade students told me that her mother was planning on buying her one. So the program continues to give by allowing families to use the money they would have spent on a bike in other ways.

Winners from Belgrade were: Kindergarten; Madison Robideau, Carter George. 1st Briana Leblanc, Brody Ware. 2nd Aubrey Woodman, Cole Tibbetts. 3rd Lindsay Fielder, Austin Clement. 4th Faith Moody, Dominick Bosse. 5th Rena Soucie, Jacob Kenshelo.

Mt. Vernon Winners were: Kindergarten; Kassidy Cates, Cormac McCarthy. 1st Lillian Darveau, Sam Miller. 2nd Cadence Bickerman, Duncan Webb. 3rd Mya Brown, Logan Post. 4th Natalie Morse, Loki Lyon. 5th Brinley Farwell, Carter Curtis.

The bikes for Belgrade children were donated by the Sidney Masonic Lodge and Mt Vernon Lodge collaboratively. The Mt. Vernon children by Vernon Valley Lodge. Funding for the Vernon Valley program comes from Sales of Christmas Wreaths. We sell Undecorated wreaths for \$25.00, split that with the wreath maker and use that money to purchase the bikes. Over the last five years we have been able to provide 66 bicycles and helmets. With rising costs, we need to hustle to sell our wreaths over such a short period of time. We are trying something new this year by asking people to consider buying one of our wreaths and preorder it for delivery for Thanksgiving weekend. Preorders can be arranged by calling or texting Jim Webster 207-462-3472.

Summertime in the Belgrades

PO Box 290, Belgrade Lakes, ME 04918

Editor: Esther J. Perne, 207-495-3777 • sumbelnews@gmail.com

Layout Design: Michael Breault, 207-578-0226 • mo.breault@gmail.com

Webmaster : Gregor Smith • gregor@roadrunner.com

www.belgradelakesnews.com

This publication is copyrighted ©MMXXII, Cider Mill Press Publications, All Rights Reserved.

Winterberry Farm

Belgrade's working family farm

Farmstore

Open 7 days a week, 9am - 6pm

Featuring all-organic products grown and produced here on the farm

Pies, Farm Tours, Farm Store, CSA, Flowers: Bouquets & Pick Your Own Organic, horse and oxen powered vegetable farm

winterberryfarmstand.com

538 Augusta Road | Route 27, Belgrade | 207-649-3331

2 miles south of Belgrade Lakes Village on Rt 27

McGrath Pond - Salmon Lake

ASSOCIATION

Stewards of Our Belgrade Lakes

Join us at -

https://www.mcgrathpond-salmonlake.org

Lakepoint REAL ESTATE

Official Real Estate Partner of the KENNEBEC COUNCIL OF REALTORS

THINKING OF SELLING?

Reach out for a FREE market valuation!

Stephanie Gardner (207) 592-5577

Trisha Cheney (207) 716-6494

stephanie@belgradelakepoint.com

trisha@belgradelakepoint.com





## —The Luckiest Boy—

Yes, our friends ARE back, and we are thankful for their annual arrival. I’m speaking of LOONS, of course! Don’t you marvel at how quickly loons appear after the ice leaves a lake, either here or elsewhere in the greater New England lakes? I swear, they must have high flying recon reporting back to their brethren, who patiently wait for the “Ice is Out” signal.

Why is it that we humans are so enamored with the loons? We don’t do jumping jacks when the ducks show up, but the loons make us do hand stands and feel warm and cozy inside. In pondering this question, my thoughts are that loons represent consistency and dependability (we can count on their re-appearance year in and year out, and always just after ice out). This was true before we came and will hopefully be so when we are gone. Also, loons present a certain stately demeanor with their stature and fantastic beauty, as well as longevity. Studies show that 25 years is not uncommon and some live to 35 years. Fossils containing the modern loon skeletal structure show their existence up to 35 million years ago. The abilities of the loon are overwhelming to us. Loons can dive down to 200 feet and have been known to swim up to 60 miles per hour. It is said that loons return to the same lake annually. The nocturnal call of the loon reaches into the human soul as a wake up call and seldom goes unnoticed. Native American lore claims the loon call represents “the cry of a Warrior being denied entry into paradise”. Of the four most commonly heard loon calls, wondering what one loon is saying to others is always left open to interpretation. The annual loon call-



## Our Friends are Back

by Rod Johnson

ing contest featuring young children as participants was an annual event on the 4th of July weekend for many years. Let’s hope that in our post covid era we can reinstate that event!

We are fortunate to have many volunteers in the greater Belgrade and Rome areas who are helping to protect loons. Floating nests are working and likely helping to offset the pressures of mankind, namely boats and other irritants these wonderful birds must endure. If you are out boating and see a loon, give it a wide berth and do not let curiosity get the best of you by going near nests. These wonderful creatures need all the help they can get. Each year the Audubon Society collects information to monitor the numbers of loons in many different lakes, including the number of

chicks born. These counts are done on the same day each year at 7 a.m. by local volunteers.



MIFF to honor Debra Winger in July. Go to page 15 to learn more.



winery & distillery

152 Fairfield St  
Oakland, ME 04963  
207-465-3007  
www.treespiritsofmaine.com

Makers of Orangecello, Limoncello, Absinthe and locally sourced wines & spirits. Join us for tastings Wednesday through Saturday. Also scheduling private tastings and hosting small events.

Tree Spirits ~ Locally sourced, internationally recognized



## Skowhegan History House

### Wabanaki Voices Speaker Series

LIVE AT TEWKSBURY HALL  
(MASKS REQUIRED)



**Maria Girouard**  
The Original Meaning and Intent of the Maine Indian Land Claims

**JUNE 23**

**AT 7:00 PM**  
TEWKSBURY HALL  
FEDERATED CHURCH  
SKOWHEGAN, ME

#### MARIA GIROUARD

Maria Girouard of Penobscot Nation is an historian with a particular expertise in the Maine Indian Land Claims. She earned a master's degree in history from the University of Maine in part from her thesis entitled: The Original Meaning and Intent of the Maine Indian Land Claims: Penobscot Perspectives. Maria is a longstanding community organizer, environmental steward, and educator. She speaks extensively on topics such as the Maine Indian Land Claims, Penobscot cultural connections to Katahdin, history of the Penobscot River, and food justice. She is a co-founder of the Sunlight Media Collective and of The Peoples' Garden, a community garden located on Indian Island. Maria currently serves as the executive director of Wabanaki REACH, a non-profit organization dedicated to truth, healing, and change.

Or register for the Zoom broadcast at <https://msad54.maineadulted.org>







## — Take It Outside —

## Crepuscular Fishing

by Pete Kallin

Like last year, this has been a cool and windy transition to summer, with some occasional very hot days. The fishing has continued to be productive, especially early in the morning and late in the evening. I love fishing these crepuscular periods when the lake is typically dead calm, and it is easy to spot fish feeding on or near the surface. Surface feeding fish often indicate an insect hatch taking place with some fish (often trout or small bass) sucking the bugs off the surface, creating dimples. Often larger fish will be just below the smaller fish at the surface, eating the smaller fish or the nymphs (insect larvae) just below the surface waiting to emerge. In our lakes, we also get schools



Ms. Caldarella counting the fry as Belgrade Central School students release salmon fry into Bond Brook.

of landlocked alewives disturbing the surface while spawning in relatively shallow (less than about 25 feet) coves. Often these schools are being chased by larger fish and you will see occasional large splashes as a bass or brown trout picks one off. For this situation I like to use one of my flyrods rigged with a White Zonker, a streamer that nicely mimics the landlocked alewives in the lake. It's usually easy to catch several nice bass or white perch under these conditions. A spinning rod (I prefer an ultralight) rigged with almost anything silver, such as a small jerk bait (such as a Rapala), Mepps spinner, or Weeping Willow spoon is also quite effective.

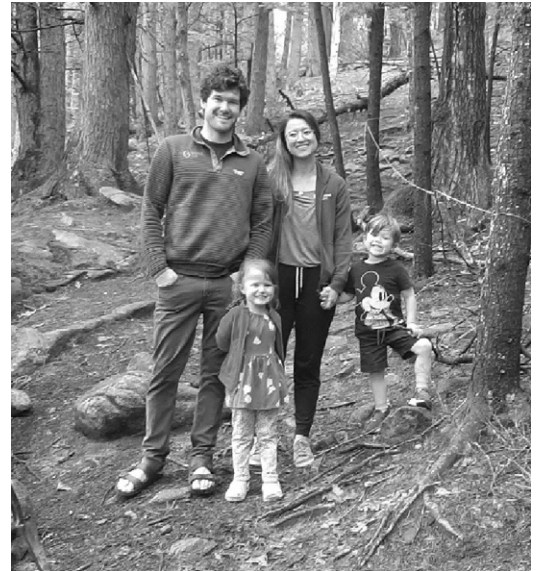


By the time this article is published, the water temperatures will be over 70F in the lakes and the bass will be in the shallows either sitting on their own beds or chasing the sunfish on theirs. It is a fun time for fly fishermen to catch a lot of fish on streamer flies or surface poppers, especially at dawn or dusk. Spinning gear also works well with surface lures, especially at dusk. It can be a great time to teach a youngster how to fish because the action is fast. A worm-baited hook and bobber off the dock is especially effective in getting kids "hooked on fishing." As I was passing my new neighbor, Matt Lawler's, dock recently I spotted his sons, Chase and Bennett catching fish after fish and excitedly showing their catch to their dad. It was hard to tell who was having more fun: Dad or the kids.

Every spring I act as a "Fish Friends" mentor for the Atlantic Salmon Federation (ASF). I work with several schools (and the 7-Lakes Alliance) to help students raise Atlantic Salmon fry in refrigerated tanks in the classroom from eggs we receive from the National Hatchery at Green Lake in Ellsworth. The students study salmon life cycles and migrations and the fish are eventually stocked into the Bond Brook in Augusta to help restore this Federally listed endangered species. Recently Jon Milne and I helped teacher, Amanda Caldarella, and another teacher from Belgrade Central School plus 30 third graders stock 388 Salmon fry into the brook. This is a great program and gets young people (and their parents) excited about these critically important fish. Maine is the only U.S. State with reproducing native Atlantic salmon and is trying to restore these once thriving fisheries. Hopefully we will see some of those fish back in the brook in about 4 years.

June 4th was National Trails Day. I spent the morning at French Mountain with 7-LA Land Steward, Jonathan Milne and Scott Guay of the Stewardship Committee. We were installing some water bars to make the trail more resistant to erosion events. It was rewarding to see how many people were out hiking

*Continued on page 6...*



Isaac and Mari Axtell with Luna and Frankie



Three generations of the Shute Family hiking French Mountain.

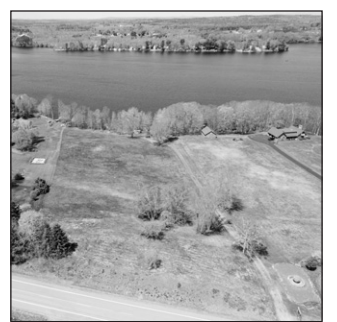
## LAKEFRONT LIVING



**Long Pond - Smithfield - MLS 1530817** This lovely, move-in ready lake house was built in 2008 on a piece of property that has been in the family since 1952. It offers spectacular views of the lake, unforgettable sunsets, unusual privacy, ample parking and over 150 feet of water-frontage. It has knotty pine walls, bamboo laminate flooring and beautiful ceiling throughout. Thoughtfully constructed, this home features 6 inch insulation, 36 inch doors, wide hallways, and stairs. This property has been very well-cared for and maintained by its owners. An inviting screened-in porch opens onto a large kitchen on your left which includes an abundance of counter space, cabinets, large drawers - all in hickory. A large island offers additional space for prepping, serving and storage underneath. At the other end of the room is a large, solid oak table with three leaves, making it possible to sit up to ten people with the storage bench. Walking toward the family room, you will find a very large bathroom with a shower, enclosed washer and dryer, and a very deep linen closet. Off the family room there is an all purpose room, now being used as an office and more storage. The family room itself has comfortable seating, a futon, and a large flat screen TV on the wall. As you make your way upstairs, you will see a second full bathroom with a tub and shower and another linen closet. The two unusually large furnished bedrooms sleep at least eight people and offer an abundance of natural light and fresh Maine air from large windows and sliding glass doors leading to a fully screened-in long porch - a favorite space for enjoying coffee, relaxing, dining, playing games, quietly reading or watching stunning sunsets. It is a great getaway place. **\$595,000 Ask For Jodie**



**China Lake - MLS 1531225 -** Stunning parcel located on China Lake with 4.2+/- acres of field and 210+/- feet of water frontage. Beautiful field with sunset views. Power lines cross the property, buyer should check with Central Maine Power for potential connections. This property also has access to Fire Road 30 which makes driveway access easy. This type of lake-front property is a rare find. **\$450,000 Ask For Dana**



**COLDWELL  
BANKER**  
PLOURDE  
REAL ESTATE

**207-872-7650**  
www.cbplourde.com

143 Silver Street, Waterville ME 04901

Each office is independently owned & operated.

## MAINE~LY ELDER CARE

"Caring for the ones who cared for us"



In - Home Nursing • Personal Care Services • Homemakers  
• Emergency Response Systems • Transportation Services

STATE REGISTERED PERSONAL CARE  
AND HOMEMAKER AGENCY

**465-3249**

28 Center St., Oakland, Me 04963

www.Maine-lyElderCare.com

denise@Maine-lyElderCare.com





## — Calendar —

The summer of 2022 offers a celebration of events both returning and new in the central Maine area. Calling ahead to confirm scheduling is recommended and observing any covid requests or requirements by businesses and venues is highly encouraged.

Additions to events, activities, outings, visits, etc. are welcome and appreciated. Email, call, or stop us on the street with ideas and information.

### WEEKLY

#### Farmers' Markets

**Tuesday** - Augusta Farmers' Market, 2-6 pm, Mill Park, Water Street, Augusta.

**Thursday** - Downtown Waterville Farmers Market, 2-6 pm, Head of Falls and Riverwalk, Waterville.

**Friday** - Farmington Farmers' Market, 10 am-1 pm, parking lot near Better Living Center, Front Street, Farmington.

**Sunday** - Belgrade Lakes Farmers Market, 9 am-2 pm, 7 Lakes Alliance, Main Street, Belgrade Lakes.

#### Cruise-Ins

**Wednesday** - Fast Eddie's Drive-In Weekly Cruise-In, 377-5550, 5-8 pm, live music, 50/50 raffle, food and ice cream specials, Route 202, Winthrop.

cials, Route 202, Winthrop.

**Wednesday** - Dutch Treat Weekly Cruise-Ins, 645-2145, 5-7 pm, Route 2, Wilton.

**Thursday** - Gardiner Classic Car Cruise-In, 592-7019, 3-7 pm, music, demonstrations, giveaways, 50/50, local foods, www.gardinermainstreet.org, Waterfront Park.

### THEATER

**Thursday 6/9-Sunday 6/12 and Wednesday 6/15-Saturday 6/26** - "The Girl on the Train," 474-7176, Lakewood Summer Theater, Route 201, Madison.

### MUSIC

**Thursday 7/7 and every Thursday** - Music on the Village Green, "Cowboy Angels" first concert, 6:30-8 pm, hosted by Chris Poulin, 495-3481, in the gazebo, Belgrade Lakes.

**Friday 7/17 and every Friday in July and August** - Historic Johnson Hall's Free Waterfront Concerts, "Runnin' Down a Dream" first concert, 7-8:30 pm, Gardiner Landing on the Kennebec River, Gardiner.

### PLANT PATROL

**Wednesday 6/22 and every Wednesday through 8/24** - Adopt-A-Shoreline & Plant ID Training, 10-11:30 am, www.7lakesalliance.org, 495-6039, 7 Lakes Alliance, 137 Main St, Belgrade Lakes.

### THIS WEEK

**Wednesday 6/15** - An Evening In Honor of Martha Ballard, a conversation with Martha Ballard's sixth great-grand-daughters removed, Glee and Ruth Ballard, including "A Midwives Tale" documentary, silent auction, hors d'oeuvres, wine and soft drinks, \$30 per person, 5:30 pm, marthaballad.com/tickets, Calumet Club, Augusta.

**Thursday 6/16 through Sunday 6/19** - Blistered Fingers Family Bluegrass Music Festival, 873-6539, great bands, food, camping, Fairgrounds, Litchfield.

**Thursday 6/16** - Belgrade Historical Society Annual Meeting, all welcome, 6 pm, at the newly renovated school house/health center, presentation by Eric Hooglund on the school, 495-2901, 11 School Street, Belgrade Lakes Village.

**Friday 6/17-Sunday 6/19** - 38th Annual Trek Across Maine, American Lung Association fundraiser, 624-0236, Thomas Point Beach and Campground to Bates College to St. Joseph's College to Thomas Point.

**Friday 6/17 through Sunday 6/19** - The Maine Event Horse Show - Blue Ribbon BBQ, covered arena, concessions, free admission, Fairgrounds, Route 201, Skowhegan.

**Friday 6/17-Sunday 6/19 and Friday 6/24-Sunday 6/26** - "A Flea in her Ear," \$24-26, 873-7000, Waterville Opera House, Water Street, Waterville.

**Saturday 6/18** - Amy Buxton's Underdog Jog, Memorial 5K, 215-4608, registration starts 7:30 am, \$25, race 9 am, Cony High School, 60 Pierce Drive, Augusta.

**Saturday 6/18** - Chesterville Children's Festival, Juggler

*Continued on page 14....*

# WHISTLESTOP

## CONCERT SERIES

**Spencer + the Walrus**



**JUNE 18**  
Amphitheatre Stage  
6PM doors, 7PM show  
\$25 in advance, General Admission  
Spencer and the Walrus meticulously recreate the music of the Beatles.

**Brett Dennen**



**SEPTEMBER 16**  
Amphitheatre Stage  
6PM doors, 7PM show  
\$30 in advance, General Admission  
See Brett on his So Much More summer tour, featuring Brett's new album, See the World.

# NARROW GAUGE CINEMAS

**Narrow Gauge Cinema & Drive In**  
Front Street Farmington  
www.narrowgaugecinema.net  
Office-778-2281 • Info line 778-4877

**Cinema prices:** Adults \$7.00 Children \$5.00  
Monday and all matinees 5.00 • Now Open 7 Days a Week!

**NARROW GAUGE DRIVE-IN NOW OPEN FOR THE SEASON!**

**Drive in prices:** \$10.00 per carload

**BIG SKY GRILL**  
**Thursday, Friday and Saturday 4:30 pm – 8:30 pm**  
For Take-Out or Reservations please call (207) 779-7883

*Take it Outside continued from page 5....*



Chase and Bennet Lawler fishing off the dock and showing their catch to their dad, Matt.

the trail that day, almost all of whom thanked our group profusely for our work on maintaining such nice trails for family hiking. Isaac and Mari Axtell of Waterville were hiking with their son, Frankie, and daughter, Luna. Rome residents, Trent and Sandy Shute, who live on Great Pond, were hiking with their daughter, Sarah, and grandchildren Bodhie and Sawyer.

The 7 Lakes Alliance (former BRCA) is once again holding in-person events that may be of interest. Upcoming programs include multiple family hikes (including June 26 at Mt Phillip), a night sky tour (June 28), and a presentation by Chewonki (July 5th) on "Mammals of Maine from Mice to Moose." Check the 7LA website site for details: (<https://www.7lakesalliance.org/>). Keep an eye on the sign in front of the building as events are being added all the time. Get on their email notification list for updates. I encourage everyone to take advantage of the wealth of recreational opportunities this area offers. Do like they used to in "the good old days" and take a kid fishing, or on a hike, or paddling in a canoe. It's how memories are made. Or take a parent, so they can become a kid again.







# Wabanaki Voices with Maria Girouard, Penobscot Nation



Maria Girouard

a co-founder of the Sunlight Media Collective and of The Peoples' Garden, a community garden located on Indian Island. Maria currently serves as the executive director of Wabanaki REACH, a non-profit organization dedicated to truth, healing, and change.

The Skowhegan History House Museum & Research Center continues its Wabanaki Voices Speaker Series with Maria Girouard of Penobscot Nation on Thursday, June 23, at 7pm at Tewksbury Hall - located behind the Federated Church on the island in Skowhegan. She will present, "The Original Meaning and Intent of the Maine Indian Land Claims". Masks are required for in-person attendance. To register for the Zoom link, visit msad54.maineadulted.org. FMI: (207) 474-6632.

Maria Girouard of Penobscot Nation is an historian with a particular expertise in the Maine Indian Land Claims. She earned a master's degree in history from the University of Maine in part from her thesis entitled: The Original Meaning and Intent of the Maine Indian Land Claims: Penobscot Perspectives. Maria is a long standing community organizer, environmental steward, and educator. She speaks extensively on topics such as the Maine Indian Land Claims, Penobscot cultural connections to Katahdin, history of the Penobscot River, and food justice. She is

# Belgrade Lakes: One Destination for Many Reasons

For sidewalks to stroll, shops to visit, vistas of surrounding waterways and a variety of community activities, Belgrade Lakes is ready with an exciting small town, why-we-are-in-Maine, mostly outdoors summer schedule.

The focal point of the seasonal schedule is the gazebo on The Village Green at the southern end of Belgrade Lakes. Weekly concerts every Thursday, monthly Craft Shows the last Sunday and special presentations such as the Union Coffeehouse, piano recitals and book discussion groups use the gazebo where there is ample room for spectators, a neat, not uncomfortable stone wall to sit on and the advantage of watching the world walk, bike and drive by.

Just south of The Village Green, The Center for All Seasons bustles summer long with Golden Pond Day Camp and Camp Loon Teen Camp, gym activities, a public waterfront, a swimming pool, the best, most Belgrady porch in the region and cool trails by the lake. Among other events, the Center for All Seasons will host the Friends of the Belgrade Library Book Sale July 2 and the Belgrade Fire & Rescue Department Beanhole Supper August 6.

At the north entrance Belgrade Lakes, Peninsula Park on Long Pond is a refuge for picnics and to spend some peaceful moments, while the nearby Post Office is a hub of sociability where boats arrive and dock from Great Pond and where raffles are sold to benefit the Belgrade



A piano recital at the Gazebo. Ethan Perne, student of Dianne Gorman.

Lakes Association. Members who staff the raffle table and are an unofficial welcome committee can answer questions about the Belgrades, give directions and assure visitors that here is the best possible location to visit, enjoy and return to.

Another center for information about the area and especially the lakes, the trails and the many preservation projects is the 7 Lakes Alliance headquarters where visitors are welcome to look at the displays and discover a calendar of activities that everyone is welcome to join. The Belgrade Farmers' Market is held in the 7 Lakes parking lot every Sunday.

To top off a visit to Belgrade Lakes with an evening out, the historic Village Inn and Tavern near the 7 Lakes Alliance center is open for dinner and offers a summer music schedule - to be announced soon.

Belgrade Lakes is truly one destination for many reasons.

## Hathaway Mill Antiques

Quality Authentic Antiques

- VOTED BEST OF MID MAINE
- THANK YOU FOR YOUR CONTINUED SUPPORT
- DISCOVER THE GEM THAT IS HATHAWAY MILL ANTIQUES, SISTER SHOP TO CABOT MILL ANTIQUES!!

**Open Wed. - Sun. 10am-5pm**  
**Closed Mon. & Tues.**  
**Air Conditioned**

**HATHAWAY MILL ANTIQUES**  
10 Water Street, Waterville, ME 04901  
**207-877-0250**

Like us on Facebook & Follow us on Instagram!  
[info@hathawaymillantiques.com](mailto:info@hathawaymillantiques.com)  
[www.hathawaymillantiques.com](http://www.hathawaymillantiques.com)

## LakeHouse<sup>TM</sup> Renovations

Design • Build • Renovate

General Contractors  
Traditional Style Camps,  
Cottages and Lakefront Homes

**207.242.3663**

**Qualified buyers are looking for homes like yours...**

**Call today for a free consultation!**  
**(207) 649-1471**

**Ellen Wells**  
Associate Broker  
Certified Luxury Home Specialist

**COLDWELL BANKER** PLOURDE REAL ESTATE  
143 Silver St Waterville [cbplourde.com](http://cbplourde.com)

**SUPERB RESTORATIONS.**

**L. TARDIF JEWELER**  
62 Main Street Waterville, Me.

Tues - Sat  
9 - 5

est. 1955

207-872-7542





**Lynch**  
LANDSCAPING INC.  
FOR THOSE WHO DESIRE QUALITY

Design • Install • Maintain

LakeSmart Certified for all your waterfront needs!

- Plant Installations
- Plant Maintenance
- Patios
- Mowing
- Walkways
- Fertilizing
- Permeable Paver Driveways
- Weed and Tick & Mosquito Spray

LakeSmart

**Serving all of Central Maine!**

(207)474-2420  
[www.lynchlandscaping.com](http://www.lynchlandscaping.com)

**Winter Storage for Summer Vehicles**

**Belgrade Lakes Marine & Storage, Inc.**

**207-495-2378 • [www.belgradelakesmarine.com](http://www.belgradelakesmarine.com)**

366 Augusta Road, Route 27, Belgrade, ME

*Conserving the lands and waters of the Belgrade Lakes Region for all*

**7 Lakes Alliance**  
137 Main Street  
PO Box 250  
Belgrade Lakes, Maine  
04918-0250

**495-6039**

**Ensuring our Future**

Find us on Instagram and Facebook

<https://www.7lakesalliance.org/>

Call 495-3777  
to advertise in  
Summertime in the Belgrades

**EYE CARE**

**OF MAINE**

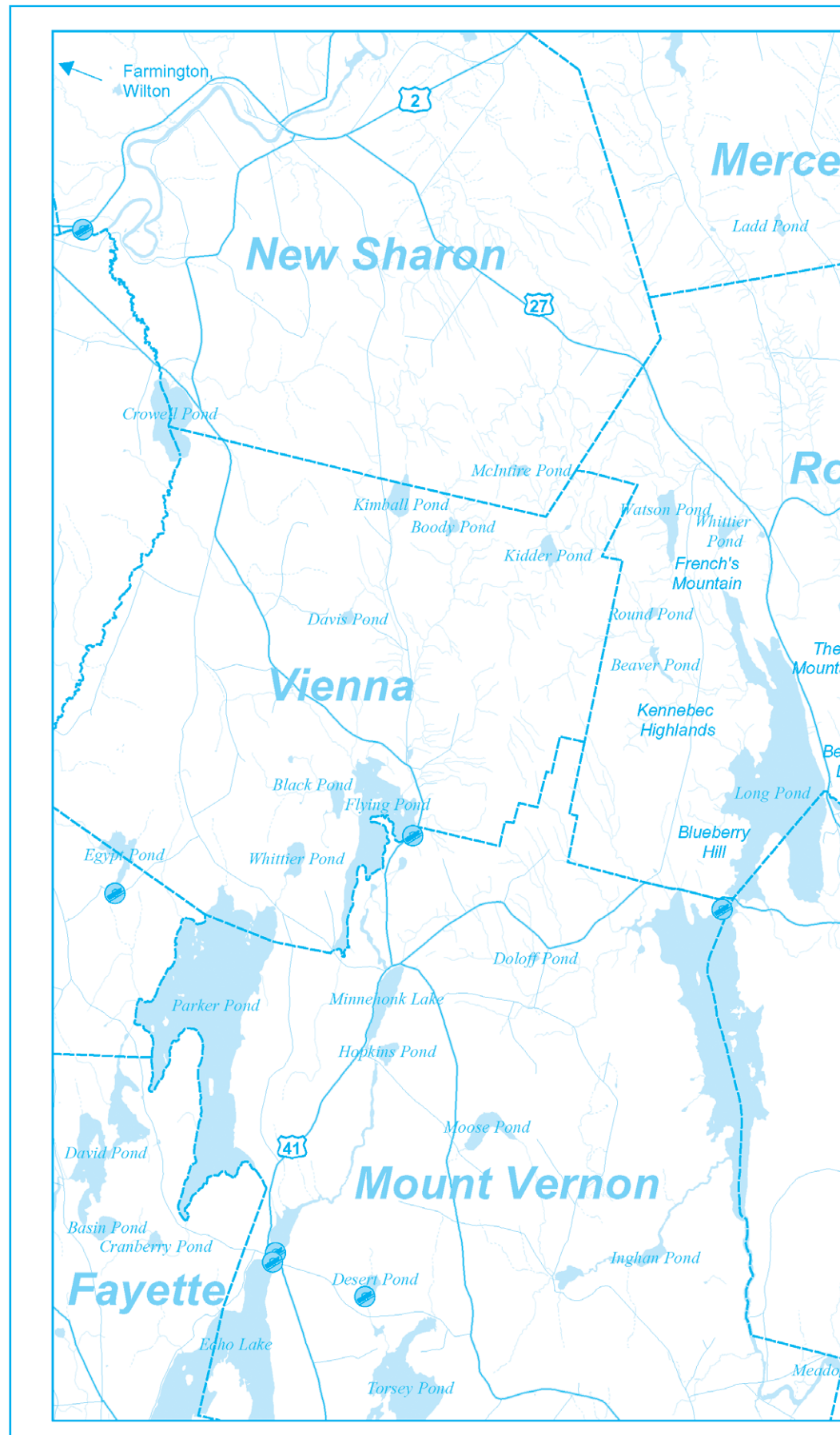
"Your Sight is Our Vision"

- Comprehensive Eye Exams
- Eyewear Center and Contact Lens
- State of the Art Cataract Surgery
- Light Adjustable Cataract Lens
- Retinal Diseases and Glaucoma

**ON-SITE SURGERY CENTER**  
Quality and Affordable Cataract Surgery

Waterville • Pittsfield • Farmington • Monson

(207) 873-2731    [www.Maine2020.com](http://www.Maine2020.com)



**Belgrade Vacation Rentals**

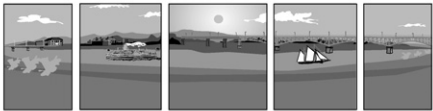
Lakefront Camp & Cottage Rentals in the Belgrade Lakes Region

Rental Properties Wanted
 90% Occupancy Rate
 Over 14 Years Experience

(800) 760-1503 • [info@belgradevacationrentals.com](mailto:info@belgradevacationrentals.com)

[www.BelgradeVacationRentals.com](http://www.BelgradeVacationRentals.com)





**RIVERFRONT**  
BARBEQUE & GRILLE

**WORLD CLASS BARBEQUE**

SEAFOOD, PASTA, & VEGETARIAN ENTREES

**207.622.8899**

300 WATER STREET, AUGUSTA, MAINE

[WWW.RIVERFRONTBBQ.COM](http://WWW.RIVERFRONTBBQ.COM)

FULL SERVICE DINING \* CATERING \* BULK TAKE OUT



*The*  
**Gin Mill**  
Augusta, Maine

*Augusta's finest upscale lounge featuring  
fine wine, martinis, and over 100 brands  
of beer from Germany to Japan*

Thursday thru Saturday 3:00pm until Midnight,  
Above the Riverfront Barbeque & Grille  
at 300 Water Street  
**207.620.9200**

Gail Rizzo

[gailrizzo@belgradelakepoint.com](mailto:gailrizzo@belgradelakepoint.com)

207-242-8119



Pat Donahue

[pldcamp@msn.com](mailto:pldcamp@msn.com)

207-730-2331



**FLYING POND** | Nestled among the wooded forests of Vienna on the shore of Flying Pond is your very own Vacationland get away with 100 feet of Lakefront and a spectacular view!

MLS- 1530076

\$345,000



**MOUNT VERNON** | Completely up-dated historic New Englander also know as the Cliff Dunn House circa 1885 in the heart of the village and directly across the street from Minnehonk Lake.

MLS - 1530037

\$589,000



**LAND FOR SALE** | Beautiful building lot on Augusta Road/ Route 27 featuring 3 private, wooded acres surrounded by conservation lands of the Kennebec Highlands with trail systems for hiking, biking and snowmobiling. Short distance to Belgrade Lakes Village, Golf Course and numerous public boat launches and trail heads.

MLS - 1495949

\$39,900



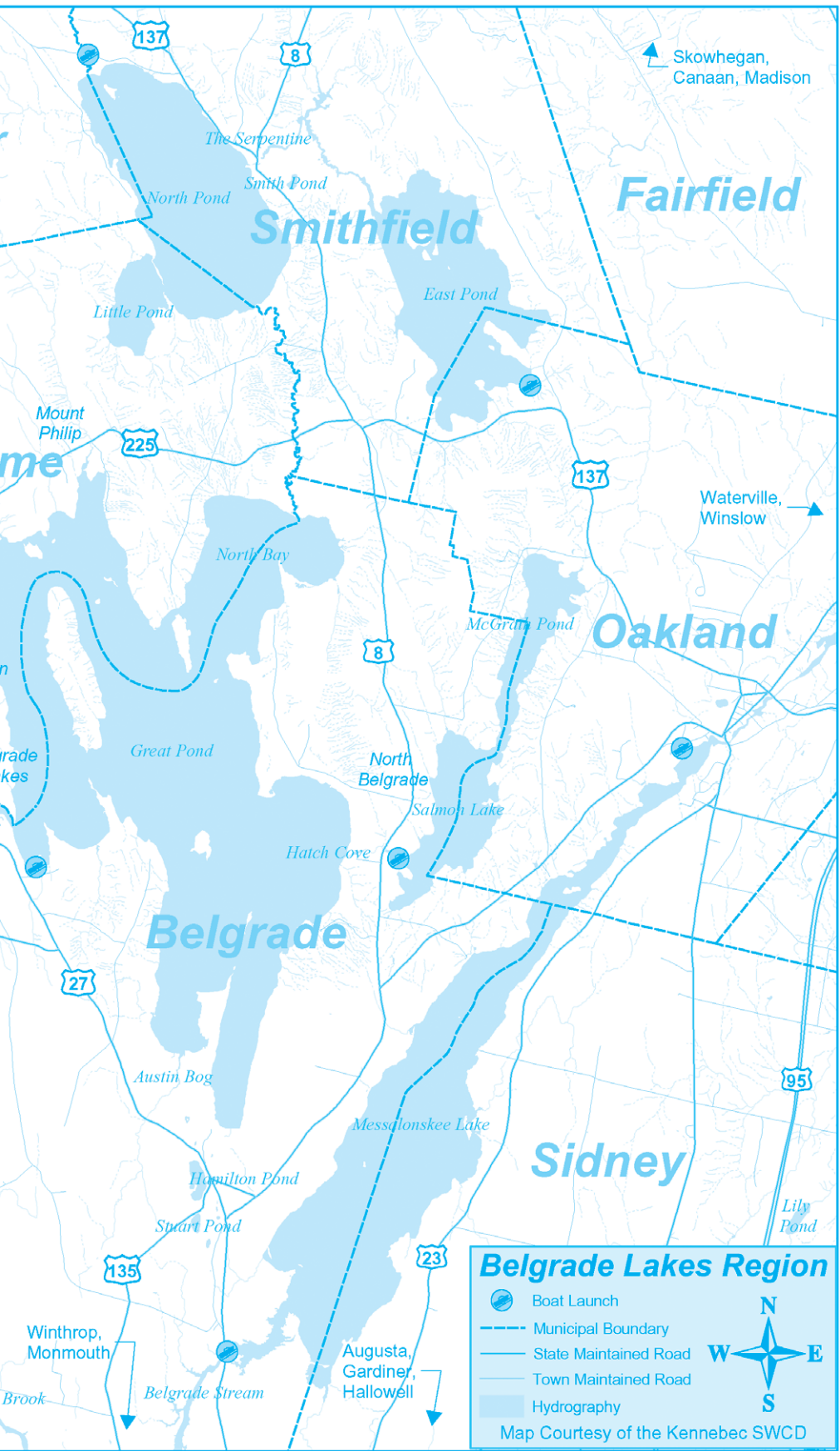
**SUN BEAM ROLLER RINK** | Turn-key duplex and 6,250 building on North Pond that known as the Sun-beam Roller Rink with 75' of waterfront on North Pond. This bright and sunny duplex has so much to offer, with modern updates though-out .

MLS - 1521000

\$1,100,000



Lakepoint Real Estate 221 Main Street Belgrade Lakes | 207-495-3700 | [belgradelakepoint.com](http://belgradelakepoint.com)



**Visit the Businesses  
on Marina Drive**

**Great Pond Marina, Inc.**

COME VISIT US TODAY

**Fuel Dock: 90 Octane Ethanol FREE Gas with**



- **Dock & Mooring:** Custom Mooring Systems, Dock Lines, Bulk Rope, Boat & Dock Fenders, Mooring Buoys, Chain, Hooks, Shackles



Hours 9-4 Daily

[info@greatpondmarina.com](mailto:info@greatpondmarina.com)

[WWW.GREATPONDMARINA.COM](http://WWW.GREATPONDMARINA.COM)



[sadiesboathouse@hotmail.com](mailto:sadiesboathouse@hotmail.com)

• 207-495-4045 •

Like us on Facebook!

Friday-Saturday 5-9 PM

**G & L CONTRACTING**

Happy Summer!!!

**207-495-9009**

[www.gandlcontractingmaine.com](http://www.gandlcontractingmaine.com)



Brought to you by  
Mid-Maine Chamber of Commerce

**Wednesday, August 3, 2022  
Noon - 11PM Head of Falls in Waterville**

Join us for an adult-focused day  
of great food, live music,  
cornhole tournament,  
brew tasting, culinary vendors,  
and more!

Featuring Downeast Brass, Trifecta and Motor Booty!

[www.TasteofWaterville.com](http://www.TasteofWaterville.com)







**F. A. Rizzo Appraisal Company**  
**Frank Rizzo**  
 Consultant/Appraiser  
**Real Estate Appraisal & Planning**  
 Certified Residential cr709  
 tel. (207) 495-3365  
 cell (207) 458-4916  
 farizzo@roadrunner.com  
 Since 1992

**CHILDREN'S BOOK CELLAR**  
**BOOKS, PUZZLES, TOYS, GAMES**  
 A store for children of all ages, the young and the young at heart.  
 Open Monday 12 to 5 • Tues. – Sat. 9 to 5  
 52 Main St. Waterville 872-4543

Advertising in *Summertime in the Belgrades*  
**REALLY WORKS!**  
 Call 207-495-3777 for rates and information.

**THAYER ENGINEERING CO.**  
**TE**  
 Land Surveyors  
 Civil Engineers  
 Planners  
 Elliot B. Thayer, PLS, PE  
 Andrew Dunbar, PLS, LPF, LSE  
 PROFESSIONALS WITH LONGSTANDING TIES TO THE BELGRADE LAKES REGION  
 17 Hasson Street  
 Farmingdale, ME 04344-1613  
 582-7762  
 www.thayereng.com

**GENERATORS of MAINE INC.**  
 SALES • SERVICE • INSTALLATION  
 www.generatorsofmaine.com 207-495-2285  
 dan@generatorsofmaine.com  
 Professional Service At Fair Prices  
**KOHLER**  
 IN POWER. SINCE 1920.

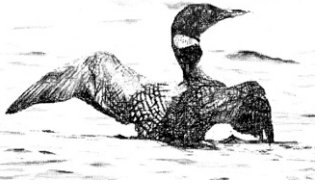
**Oliver & Friends BOOKSHOP**  
 Wednesday - Friday:  
 10 am - 6 pm  
 Saturday: 10 am - 4 pm  
 Sunday: 10 am - 3 pm  
 207-707-2123  
 www.oliverandfriendsbookshop.com  
 87 Main Street, Belgrade Lakes Village

**For your jacking and leveling needs, including sill repair, call Eric Lancaster**  
 "Over 25 years experience."  
 207-634-2821

**ENGINE 5 BAKEHOUSE**  
 (207) 616-3772  
 Freshly baked goods made in a real firehouse!  
 Thu - Fri 7am - 4pm,  
 Sat 8am - 2pm  
 140 Western Ave  
 Waterville Maine  
 engine5bakehouse.com  
 https://www.facebook.com/engine5bakehouse

## Call of the Loon

I took all of these photos while doing my loon survey on lower Long Pond's Ingham Pond June 7th. Some action shots that I have never seen before!  
 Dick Greenan, Chairman, BLA Loon Preservation Project



**ACME LAND SURVEYING, LLC**  
 Professional Land Surveyors – Professional Foresters  
 Property Surveys, Subdivisions, Topographic Surveys, MLLs,  
 Elevation Certificates/LOMAS, ALTA/ACS Surveys,  
 Deed Research, Wetland Delineation, Forest Management  
 108 Fairbanks Rd., Suite 5  
 Farmington, ME 04938  
 Website: www.acmelandsurveying.com  
 Tel. (207) 778-4081  
 Toll Free (800) 778-4081  
 Email: info@acmelandsurveying.com







## Dining

### Augusta

• **Riverfront Barbeque & Grille and Gin Mill Lounge**, world class barbeque, seafood, pasta and vegetarian entrees, full service dining, catering, bulk take out, 300 Water Street, Augusta, [www.riverfrontbbq.com](http://www.riverfrontbbq.com), 622-8899

### Belgrade

• **H.J Blake's for Goodness Sake's**, fresh, homemade, tasty take out, signature lobster rolls, hot dogs, burgers, scenic outdoor seating, 945 West Road, Belgrade, 462-2280

• **Sadie's Boathouse Restaurant** at Great Pond Marine, hearty contemporary American fare, 25 Marina Drive, Belgrade Lakes, 495-4045, 242-1273

• **Village Inn and Tavern** 157 Main Street, Belgrade Lakes, 495-3553, [www.villageinnandtavern.com](http://www.villageinnandtavern.com)

• **Winterberry Farm Café**, homemade treats, pie, cookies, granola bars, grilled organic cheese sandwiches, veggies, drinks, 538 Augusta Rd, (Route 27), Belgrade, 649-3331

### Farmington

• **Big Sky Grill**, wood-fired pizza, pasta, salads and more, 108 Narrow Gauge Square, [narrowgaugecinema.net/big-sky-grill](http://narrowgaugecinema.net/big-sky-grill), 779-7883

### Waterville

• **Engine 5 Bakehouse**, fresh, from-scratch baked goods including pies, cookies, bars, and gluten free items, *take-out only*, 140 Western Ave, Waterville, [engine5bakehouse.com](http://engine5bakehouse.com), 616-3772

• **Pete's Pig**, order ahead and get Smoked Meats, Party Packs and Catering, not offering dine-in and take out, 35 Water Street, [www.petespig.com](http://www.petespig.com), 616-0969

### Oakland - Wines & Spirits

• **Tree Spirits**, tasting room for award winning wines and spirits made from local apples, pears and maple syrup, tours available, 152 Fairfield Street, Oakland, [www.treespiritsofmaine.com](http://www.treespiritsofmaine.com), 861-2723 or 465-3007



THE  
VILLAGE INN  
AND TAVERN

**Restaurant Hours**  
SUMMER HOURS  
Tuesday - Sunday  
@ 5PM beginning June 1st  
DINNER  
RESERVATIONS  
Must be made by phone  
(207) 495-3553

### Lodging

*Summer Music Schedule ~ Coming Soon*  
[www.villageinnandtavern.com](http://www.villageinnandtavern.com)

157 Main Street | PO Box 282  
Belgrade Lakes, ME 04918  
[villageinnandtavern@gmail.com](mailto:villageinnandtavern@gmail.com)

## Notebook

### The Small Garden Guide

• No room, no problem. Grow something in a hanging planter or whatever catches the imagination and can hold plants. Let the sun, or shade, decide what to grow, but nothing too top heavy. For vegetables try herbs for salads, salad greens themselves, cherry tomatoes, radishes. It's a good time to buy seedlings at roadside stands and school's out: get a child interested in a hanging planter garden, too.

### Visit A Shaker Village

• A great Maine visit is the Sabbathday Lake Shaker Village in New Gloucester. The unique and historic Village was featured in the book review of "Like The Willow Tree" in the June 10 issue of Summertime in the Belgrades. The renowned museum at the Village and some of the well kept grounds are open daily Monday through Saturday. Call 926-4597 for times and covid restriction updates.

### Museum and Park Pass Program

• Free admission to Maine State Parks, the Coastal Maine Botanical Gardens, the Maine Wildlife Park and more is as close as your local library. The number of free passes varies by venue and availability depends on demand and a valid library card is required. Local libraries should be contacted for pass information as well as special short term rates and reciprocal memberships for summer visitors and vacationers.

### Holocaust & Human Rights Center of Maine

• The HHRC, University of Maine at Augusta, Michael Klahr Center is offering two workshops this summer. Anti-Bias Teacher Training will be held August 1, 3, 5, 8, 10 and 12 from 9-11 am. Teaching the Holocaust will be held August 8, 10, 12, 15, 17 and 19, 1-3 pm. <http://hhrc.uma.edu>, 621-3530

### Augusta

• Be an Ironman event volunteer. The Kennebec Valley YMCA is partnering with Ironman 70.3 Maine to coordinate volunteers for the Sunday, July 31 Ironman event. Opportunities include life-guards, aid stations, motorcycle support, penalty tent, course pointers, cross walk security, start and finish line help, athlete check-in and food. No experience necessary. Ironman Foundation Grants available to groups volunteering together. [im70.3maine@ironmanvolunteers.com](mailto:im70.3maine@ironmanvolunteers.com)

### Mount Vernon

• Volunteers sought at the Travis Mills Foundation Veterans Retreat. Groups or individuals welcome. Visit [www.travismillsfoundation.org](http://www.travismillsfoundation.org) or email [Dulcie@travismillsfoundation.org](mailto:Dulcie@travismillsfoundation.org)

### Summer Dog Safety Tips

• Hot days are dangerous for man's best friend. To keep dogs safe, follow these reminders:

- Never leave a dog in a car. Even with the windows cracked, the inside of a car can heat up to 120 degrees.
- Provide hydration. Refill water bowls more often. Add ice cubes to cool dogs and prevent vomiting.
- Avoid hot surfaces such as pavement, concrete, wood, stone, metal and sand - or use dog booties.
- Retreat to the shade. Prevent overheating with shady breaks every 30 minutes.
- Exercise during cooler hours - morning and evening.
- Protect white, light or hairless dogs from the sun with doggie blankets.

All of the above are good practices for humans, too.



- Lakeside Cottages • Boats & Motors
- Full American Plan

3 Alden Camps Cove  
Oakland, Me 04963  
(207-465-7703)  
E-mail: [info@aldencamps.com](mailto:info@aldencamps.com) • Website: [www.aldencamps.com](http://www.aldencamps.com)

## Specializing In CAMP JACKING AND LEVELING

John Webster  
32 Webster Way  
Belgrade, ME 04917

Sill Replacement  
Retaining Walls

(207) 495-2965  
35+ Years Experience

Excavation & Septic Systems

LOAM GRAVEL SAND

**465-3815**  
Cell: 314-0314

P.O. Box 146 • Belgrade, Maine 04917

**Quality Used Books**

8,000 Gently Used,  
Hand Picked, Eclectic  
and Popular Books

605 Wings Mill Road  
Mount Vernon - 620-2392  
[hosehead51@roadrunner.com](mailto:hosehead51@roadrunner.com)

Open by Appointment

Mark Meserve

**Eastern Chimney Inc**  
"A Full Service Company"

207-649-1957

1 Cardinal Way  
Winslow, Maine 04901



**622-6353**

**J & M Logging, Inc.**  
**Firewood**

Cut to order in  
lengths from  
14" to 23"

Green Certified Wood,  
Seasoned & Ash  
Cut, Split & Delivered

853 Civic Center Drive, Augusta, ME 04330





## -Business Directory-

### ANTIQUES

**Hathaway Mill Antiques**, Multi-Dealer Emporium,  
10 Water Street, Waterville, 877-0250,  
[www.hathawaymillantiques.com](http://www.hathawaymillantiques.com)

### APPLE ORCHARDS

**The Apple Farm**, 104 Back Road, Fairfield,  
453-7656, [www.applefarm.us](http://www.applefarm.us)

### ARCHITECTURAL DESIGN

**LakeHouse Design, Build, Renovate**, 17 Birchwood Road,  
Augusta, 242-3663. [www.lakehousedesignbuildmaine.com](http://www.lakehousedesignbuildmaine.com) [houzz](https://www.houzz.com/pro/contact7917/lakehouse-design-build)

### ARTS

**Waterville Creates**, 10 Water Street, Suite 106, Waterville,  
616-0292, [www.watervillecreates.org](http://www.watervillecreates.org)

### AUTOMOBILE STORAGE

**Belgrade Lakes Marine and Storage, Inc**, 366 Augusta Road,  
Belgrade, (Rte. 27), 495-2378,  
[www.belgradelakesmarine.com](http://www.belgradelakesmarine.com)

### BANKING

**Maine State Credit Union** 200 Capitol Street, Augusta,  
623-1851, [www.maineatecu.org](http://www.maineatecu.org)  
**Skowhegan Savings Bank**, 450 Civic Center Drive, Route 27,  
Augusta, 1-800-303-9511, 623-2300, [www.skowsavings.com](http://www.skowsavings.com)

### BEVERAGES

**Tree Spirits**, 152 Fairfield Street (Rte. 23), Oakland,  
861-2723 or 465-3007, [www.treespiritsofmaine.com](http://www.treespiritsofmaine.com)

### BOAT COVERS

**Covers It All Upholstery**, 1042 Kennedy Memorial Dr, Oakland,  
465-7847, [www.coversitallupholstery.com](http://www.coversitallupholstery.com)

### BOAT LIFTS

**Hammond Lumber Company**, at 21 locations: Auburn, Bangor,  
Bar Harbor, Belfast, Belgrade, Blue Hill, Boothbay Harbor,  
Brunswick, Bucksport, Calais, Camden, Cherryfield, Damariscotta,  
Ellsworth, Fairfield, Farmington, Greenville, Machias, Portland,  
Rockland, Skowhegan, 1-866-HAMMOND,  
[www.hammondlumber.com](http://www.hammondlumber.com)

### BOAT MOORINGS

**Great Pond Marina**. 25 Marina Drive, (off Rte. 27),  
Belgrade Lakes, 495-2213, [www.greatpondmarina.com](http://www.greatpondmarina.com)

### BOAT RENTALS

**Great Pond Marina**, 25 Marina Drive, (off Rte. 27),  
Belgrade Lakes, 495-2213, [www.greatpondmarina.com](http://www.greatpondmarina.com)

### BOAT SALES AND SERVICES

**Mid-Maine Marine**, 885 Kennedy Memorial Drive, Oakland,  
465-2146, [www.midmainemarine.com](http://www.midmainemarine.com)

### BOAT STORAGE

**Belgrade Lakes Marine and Storage, Inc**, 366 Augusta Road,  
Belgrade, 495-2378,  
[www.belgradelakesmarine.com](http://www.belgradelakesmarine.com)  
**Great Pond Marina**, 25 Marina Drive, (off Rte. 27), Belgrade Lakes,  
495-2213, [www.greatpondmarina.com](http://www.greatpondmarina.com)  
**Mid-Maine Marine**, 885 Kennedy Memorial Drive, Oakland,  
465-2146, [www.midmainemarine.com](http://www.midmainemarine.com)

### BOOKS

**Children’s Book Cellar**, 52 Main Street, Waterville,  
872-4543, [www.facebook.com/ChildrensBookCellar/](http://www.facebook.com/ChildrensBookCellar/)  
**Oliver and Friends, Bookshop**, 87 Main Street, Belgrade Lakes,  
707-2123

**Peoples Book Shop**, 605 Wings Mill Rd., Mount Vernon, 620-2392,  
[hosehead51@roadrunner.com](mailto:hosehead51@roadrunner.com)

### BUILDERS

**G&L Contracting**, 116 Lakeshore Drive, Belgrade Lakes, 215-7951,  
495-2325, 233-7408,  
[gandlcontractingmaine.com](http://gandlcontractingmaine.com)  
**LakeHouse Design, Build, Renovations**, 17 Birchwood Road,  
Augusta, 242-3663. 512-8161  
<https://www.houzz.com/pro/contact7917/lakehouse-design-build>

### BUILDING MATERIALS

**Hammond Lumber Company**, at 21 locations: Auburn, Bangor,  
Bar Harbor, Belfast, Belgrade, Blue Hill, Boothbay Harbor,  
Brunswick, Bucksport, Calais, Camden, Cherryfield, Damariscotta,  
Ellsworth, Fairfield, Farmington, Greenville, Machias, Portland,  
Rockland, Skowhegan, 1-866-HAMMOND,  
[www.hammondlumber.com](http://www.hammondlumber.com)

### CAMP JACKING AND LEVELING

**Eric Lancaster**, Norridgewock, 399-2292, [ejlancater77@gmail.com](mailto:ejlancater77@gmail.com)  
**John Webster**, 32 Webster Way, Belgrade, 495-2965

### CHIMNEY SERVICES

**Eastern Chimney Inc.**, 1 Cardinal Way, Winslow, 649-1957

### CIVIL ENGINEERS

**Thayer Engineering** septic design, storm water mitigation, permit-  
ting, 17 Hasson Street, Farmingdale,  
582-7762, [www.thayereng.com](http://www.thayereng.com)

### COMPUTER CONSULTANTS

**Macintosh Solutions**, Michael Breault, 24 Welch Road, Wilton, cell  
578-0226, [www.michaelbreault.net](http://www.michaelbreault.net)

### CONCERTS

**Snow Pond Center for the Arts**, 8 Goldenrod Lane, Sidney,  
1-800-476-6976, [snowpond.org](http://snowpond.org)  
**Whistlestop Concert Series**, Narrow Gauge Cinemas, 123 Narrow  
Gauge Square, Farmington, 778-2881, [whistlestopconcertseries.com](http://whistlestopconcertseries.com)

### DINING

See Directory on page 11

### DOCKS

**G&L Contracting**, installation only, 116 Lakeshore Drive, Belgrade  
Lakes, 495-2325, 215-7951, 233-7408,  
[gandlcontractingmaine.com](http://gandlcontractingmaine.com)  
**Hammond Lumber Company**, at 21 locations: Auburn, Bangor,  
Bar Harbor, Belfast, Belgrade, Blue Hill, Boothbay Harbor,  
Brunswick, Bucksport, Calais, Camden, Cherryfield, Damariscotta,  
Ellsworth, Fairfield, Farmington, Greenville, Machias, Portland,  
Rockland, Skowhegan,  
1-866-HAMMOND, [www.hammondlumber.com](http://www.hammondlumber.com)

### ELDER CARE

**Maine-ly Elder Care**, 28 Center Street, Oakland,  
465-3249, [www.maine-lyeldercare.com](http://www.maine-lyeldercare.com)

### EXCAVATING

**David Stevens**, P0 Box 146, Belgrade, 465-3815, cell 314-0314

### EYE CARE

**Eye Care of Maine**, 325 E. Kennedy Memorial Drive, Waterville,  
873-2731, 1-800-660-3403, [www.Maine2020.com](http://www.Maine2020.com)

### FARMSTANDS

**Winterberry Farm**, 538 Augusta Road, (Rte. 27), Belgrade,  
649-3331, [www.winterberryfarmstand.com](http://www.winterberryfarmstand.com)

### FINANCIAL PLANNING

**Golden Pond Wealth Management**, 129 Silver Street, Waterville,  
873-2200, [www.goldenpondwealth.com](http://www.goldenpondwealth.com)

### FILMS

**Maine Film Center/Railroad Square Cinema**, 17 Railroad Square ,  
Waterville, 873-4021,  
[watervillecreates.org/mainefilmcenter/home/](http://watervillecreates.org/mainefilmcenter/home/)  
**Narrow Gauge Cinema and Drive-in**, Front Street, Farmington,  
info line - 778-4877, office - 778-2281,  
[www.narrowgaugecinema.net](http://www.narrowgaugecinema.net)

### FIREWOOD

**J & M Logging, Inc.** 853 Civic Center Drive, Augusta,  
622-6353, [www.jmlogginginc.com](http://www.jmlogginginc.com)

### FLOORING

**Hammond Lumber Company**, at 21 locations: Auburn, Bangor,  
Bar Harbor, Belfast, Belgrade, Blue Hill, Boothbay Harbor,  
Brunswick, Bucksport, Calais, Camden, Cherryfield, Damariscotta,  
Ellsworth, Fairfield, Farmington, Greenville, Machias, Portland,  
Rockland, Skowhegan,  
1-866-HAMMOND, [www.hammondlumber.com](http://www.hammondlumber.com)

### GENERAL CONTRACTORS

**LakeHouse Design, Build, Renovations**, 17 Birchwood Road,  
Augusta, 242-3663. 512-8161  
<https://www.houzz.com/pro/contact7917/lakehouse-design-build>

### GENERATORS

**Generators of Maine**, 262 Augusta Road (Rte. 27), Belgrade,  
495-2285, [www.generatorsofmaine.com](http://www.generatorsofmaine.com)

### HARDSCAPES

**LakeHouse Design, Build, Renovations**, 17 Birchwood Road,  
Augusta, 242-3663. 512-8161  
<https://www.houzz.com/pro/contact7917/lakehouse-design-build>

### HOME CARE

**Maine-ly Elder Care**, 28 Center Street, Oakland,  
465-3249, [www.maine-lyeldercare.com](http://www.maine-lyeldercare.com)

### INSURANCE

**GHM Insurance**, 51 Main Street, Waterville, 800-244-9046,  
[www.ghmagency.com](http://www.ghmagency.com)

### JEWELRY

**L.Tardif Jeweler**, 62 Main St., Waterville,  
872-7542, [ltardifjewelers.com](http://ltardifjewelers.com)

### KITCHENS

**Hammond Lumber Company**, at 21 locations: Auburn, Bangor,  
Bar Harbor, Belfast, Belgrade, Blue Hill, Boothbay Harbor,  
Brunswick, Bucksport, Calais, Camden, Cherryfield, Damariscotta,  
Ellsworth, Fairfield, Farmington, Greenville, Machias, Portland,  
Rockland, Skowhegan,  
1-866-HAMMOND, [www.hammondlumber.com](http://www.hammondlumber.com)

### LAKE ASSOCIATIONS

**Belgrade Lakes Association (BLA)**, Long Pond and Great Pond,  
PO Box 551, 137 Main Street, Belgrade Lakes,  
512-5150, [belgradelakesassociation.org](http://belgradelakesassociation.org)  
**McGrath Pond-Salmon Lake Association (MPSLA)**, Belgrade and  
Oakland, PO Box 576, Oakland, ME 04963,  
[mpslassociation@gmail.com](mailto:mpslassociation@gmail.com)

### LAND AND LAKE CONSERVATION

**7 Lakes Alliance**, PO Box 250, 137 Main Street, Belgrade Lakes,  
931-7710, [www.7lakesalliance.org](http://www.7lakesalliance.org)

### LANDSCAPING

**G&L Contracting**, Belgrade Lakes, 215-7951,  
495-2325, 233-7408, [gandlcontractingmaine.com](http://gandlcontractingmaine.com)  
**Lynch Landscaping**, 78 Maple Street, Norridgewock,  
474-2420, 405-0880, [www.lynchlandscaping.com](http://www.lynchlandscaping.com)





LODGING

Alden Camps, East Pond, Oakland, 465-7703, [www.aldencamps.com](http://www.aldencamps.com)  
Village Inn and Tavern 157 Main Street, Belgrade Lakes, 495-3553, [www.villageinnandtavern.com](http://www.villageinnandtavern.com)

PHYSICAL THERAPY

Dockside Physical Therapy, 47 Main Street, Belgrade Lakes, 495-3195, 512-2544, Fax 512-2545

PIANO ENJOYMENT

Diane Gorman, 191B Bartlett Road, Belgrade, 495-3222  
[Gorman3366@roadrunner.com](mailto:Gorman3366@roadrunner.com)

REAL ESTATE APPRAISALS AND PLANNING

F.A. Rizzo Appraisal Company, Consultant/Appraiser, Real Estate Appraisal & Planning, 495-3365, 458-4916 (cell), [farizzo@roadrunner.com](mailto:farizzo@roadrunner.com),

REALTORS

Coldwell Banker Plourde Real Estate, 143 Silver Street, Waterville, 660-4001, 872-7650, [www.coldwellbanker.com](http://www.coldwellbanker.com)

Ellen Wells, Coldwell Banker Plourde Real Estate, 649-1471

Lakepoint Real Estate, 221 Main Street, Belgrade Lakes, 495-3700, [www.belgradelakepoint.com](http://www.belgradelakepoint.com)

Gail Rizzo, Lakepoint Real Estate, 242-8199, [gail@gailrizzo.com](mailto:gail@gailrizzo.com)

Pat Donahue, Lakepoint Real Estate, 730-2331, [pldcamp@msn.com](mailto:pldcamp@msn.com)

Stephanie Yeaton, Lakepoint Real Estate, 495-4046, 592-5577, [stephanie@belgradelakepoint.com](mailto:stephanie@belgradelakepoint.com)

Trisha Cheney, Lakepoint Real Estate, 716-6494, [trisha@belgradelakepoint.com](mailto:trisha@belgradelakepoint.com)

Amy Bernatchez, Lakepoint Real Estate, 314-2353, [amy@belgradelakepoint.com](mailto:amy@belgradelakepoint.com)

RECREATIONAL VEHICLE AND TRAILER STORAGE

Belgrade Lakes Marine and Storage, Inc, 366 Augusta Road (Rte. 27), Belgrade, 495-2378, [www.belgradelakesmarine.com](http://www.belgradelakesmarine.com)

RESERVATIONS

Belgrade Vacation Rentals, lakeside camp and cottage rentals throughout the area long and short stays many size accomodations ad rates, 1-800-760-1503, [www.belgradevacationrentals.com](http://www.belgradevacationrentals.com)

RESTAURANTS

See Dining Directory on page 11

RETIREMENT COMMUNITIES

Granite Hill Estates, 60 Balsam Drive, Hallowell, 626-7786, 1-888-321-1119, [www.granitehillstates.com](http://www.granitehillstates.com)

SURVEYING

Acme Land Surveying, 108 Fairbanks Road, Suite 5, Farmington, 778-408, 1800-778-408, [www.acmelandsurveying.com](http://www.acmelandsurveying.com)

WINDOWS

Hammond Lumber Company, at 21 locations: Auburn, Bangor, Bar Harbor, Belfast, Belgrade, Blue Hill, Boothbay Harbor, Brunswick, Bucksport, Calais, Camden, Cherryfield, Damariscotta, Ellsworth, Fairfield, Farmington, Greenville, Machias, Portland, Rockland, Skowhegan, 1-866-HAMMOND, [www.hammondlumber.com](http://www.hammondlumber.com)

WINE AND SPIRITS

Tree Spirits, 152 Fairfield Street, Route 23, Oakland, 861-2723 or 465-3007, [www.treespiritsofmaine.com](http://www.treespiritsofmaine.com)



The Dams Keeper Report

As of this writing, we are happy to report that, all of our pond water levels are in great shape. Thanks to these persistent showers! It hasn't been exactly Chamber of Commerce weather but we do need the rain – I just wish it took place while I was sleeping. Great Pond's Village dam is currently 2.4" above full pond with both gates still completely closed. Long Pond's Wings Mill dam is exactly right at 3", also above full pond with both gates also completely shut down. Salmon/McGrath is now 2.8" above full pond with it's single gate opened just the mandated 1 cfs. flow. Our neighbors on Messalonskee are down 4.2" below full which is just a fact of life with its electricity generation needs. As you have gathered, for the rest of the summer, we are in our "save the water" mode with all of our gates being closed when at all

possible.

Our precipitation for the past 10 days was only .67" but we are looking at 1.15" for the next 10 days. FYI, our normal weekly precipitation during the summer is supposed to be 0.875" so you can see we are running so far, about average. Although the long-term forecast is calling for an average 20% less precipitation which is marginally better than what they had for us for the past three years, so all is good news for our farmers, wells, gardens and of course, our lakes. We'll take what we can get – as if we have a choice!

If you have a particular question regarding our Dams and/or water levels, please email your inquiry to: [dickgreenan@outlook.com](mailto:dickgreenan@outlook.com) and we will try to answer your question either in this column or via email.

Enjoy your summer! It should be beautiful.

Welcome back!

Dick

Dick Greenan

Chairman, Belgrade Lakes Watershed Dams Committee



# GROWING GARDINER



## An All-Day Celebration Of Our Beautiful City

### SATURDAY, JUNE 18

#### Events Downtown 8:30am–4pm

#### Picnic on the Common 5pm–7:30pm

proudly supported by  Kennebec Savings Bank

PLANT SALE · KIDS ACTIVITIES · ANTIQUE CARS · LIVE MUSIC  
DRUMMING · DANCE · AIR ARTISTS · GALLERY SHOWS  
NATURE & HISTORY SPEAKERS · PUPPET SHOW & CRAFTS  
SCAVENGER HUNT · SHOPPING PROMOTIONS  
COMMUNITY PICNIC & ICE CREAM SOCIAL  
AND MUCH MORE!

  
  
Full Event Schedule & More Info At: [gardinermainstreet.org](http://gardinermainstreet.org) 





## Maine at 200 by Tom Huntington

by Martha F. Barkley

Another history of our state published by Down East Books in 2020, purchased at Bull Moose discount for \$18.97 this summer. That Covid year delayed many celebrations throughout the state. Now we can gather, thank goodness, and celebrate 202 years of statehood, for "shuwah"!

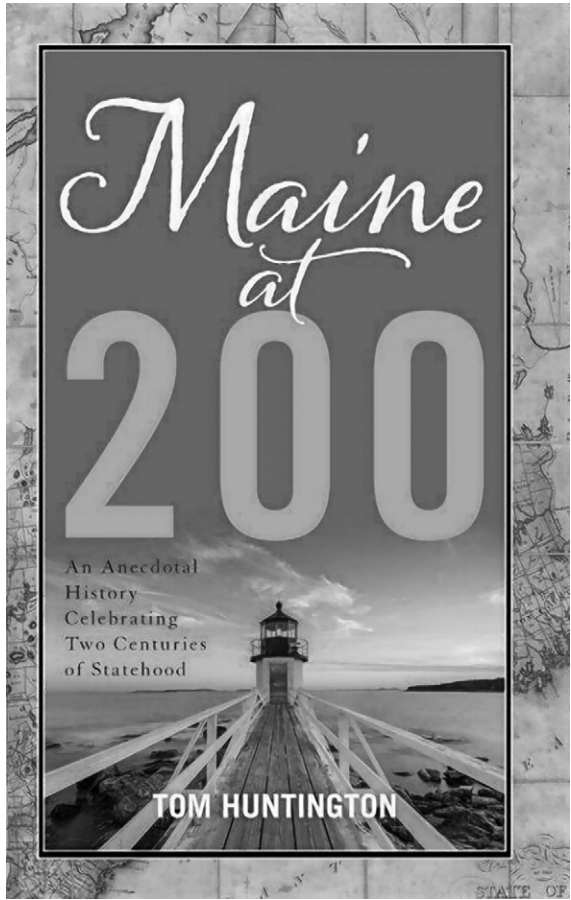
The historian who summarizes anecdotally each decade was born in Augusta, Maine. Tom Huntington has written for Smithsonian, Yankee and other notable magazines. He was editor of American History and Historic Traveler magazines. Other books by Huntington are Maine Roads to Gettysburg, Pennsylvania Civil War, and Ben Franklin's Philadelphia. He now resides in Camp Hill, PA.

Charles Lindbergh's landing on Old Orchard Beach sand in 1927 was due to foggy conditions at the nearby airport. He visited all 48 states upon his return from Paris and Maine was his only delayed arrival time. The Spirit of St. Louis dug into the wet sand when taking off and he circled Portland and Poland Springs where his relative was vacationing. Downeast fog ruled Lindbergh's flight plans, delaying his schedule by days...

We had our own Great Pond visit by Charles and his wife Anne Morrow. Mr. and Mrs. Swann, owners of Pine Island Boys Camp, welcomed the famed pilot and wife, concerned about their camper son. Charles was most interested in the septic system on the island, according to Swann's grandson who presented camp history at Union Church awhile back. It speaks volumes of the security they felt here in Maine for their son after the terrible kidnapping of the couple's first born.

Margaret Chase Smith of Skowhegan steals the show for me as far as politics are concerned. President Truman, Democrat, praised her confrontation of McCarthyism, as "the finest thing that has happened here in Washington in all my years in the Senate and the White House." Republican Margaret Chase Smith remained in the Senate for many terms after her famed "Declaration of Conscience". I love the Maine comment from a little girl wondering if you had to be female to be a senator from our state. Susan Collins and Olympia Snowe served together for years.

I highly recommend the Skowhegan Chase Library, Museum and Home



designed by this unique woman who served 36 years representing Maine on Capitol Hill. She actually added a lovely room onto her home by the river for Ike and Mamie's visit. Classrooms of students visit and individual tours are permitted. Lack of voting concerned her greatly so she created this research library for any inquiring mind.

The chapter "Terror Strikes Home," details every Maine connection with the 9/11 tragedy. From airport connections to Maine employees at the Pentagon in Virginia. Quite meticulous in this tangled web of people and observations, anecdotal history at its best.

Find the decade that interests you and read in-depth reporting. I bet you will learn something new about our state. Thoreau actually helped his dad with pencil making after graduating from Harvard and disliking teaching, especially disciplining students. Who knew that? I didn't..."As Thoreau lay dying on May 6, 1862, a friend heard what he said were the last intelligible words he uttered. They were 'Indian' and 'moose,' evidence that his experiences in Maine resonated with him to the very end."

PS I actually found both homes in Quaint Acres, Silver Spring, Md. where Margaret Chase Smith and Rachel Cason lived. Huntington devotes only a small paragraph to Carson's summer home on the coast of Maine and her work which influenced global science on the balance of nature...Their homes in the D.C. area are surrounded by land and trees and Maine beauty in the suburbs!

...Continued from page 6

Michael Menes, world class juggler and physical comedian, 6:30-8 pm, kid-friendly juggling workshop and cookout before the show, \$5 individual, \$10 family, Chesterville Center Union Meeting House, 3 Borough Rd., Chesterville.

**Saturday 6/18** - Spencer and the Walrus, meticulously recreate the music of the Beatles, 6 pm doors open, 7 pm show, \$25 in advance, general admission, [www.narrowgaugecinema.net](http://www.narrowgaugecinema.net), Amphitheatre Stage, Narrow Gauge Cinemas, Farmington.

**Sunday 6/19** - Father's Day, take a Dad on a walk or a hike, give him a rain date for a free outdoor concert or a visit to a farm on Maine Open Farm Day July 24 (also free), laugh at his jokes, take him fishing and put the worm on the hook for him, don't buy him a necktie but let him buy you ice cream!

**Monday 6/20** - Movies for Seniors, "Belgrade Home Movies of 1930s and 40s, 2 pm, North Belgrade Community Center, 508 Smithfield Road, Belgrade.

**Friday 6/24-Sunday 6/27** - MHA Downeast Horse Congress Horse Show, 850-1773, Skowhegan Fairgrounds, Route 201, Skowhegan.

**Saturday 6/25** - Kingfield POPS Festival, 4:30-10 pm. live symphonic music, food, fireworks, Kennedy Farm, Kingfield.

**Sunday 6/26 and the last Sunday of every month** - Belgrade Summer Craft Show, unique Maine made treasures, 10 am -3 pm, the Village Green, Route 27, Main Street, Belgrade Lakes.



**Professional service with exceptional results.**  
I am committed to making buying and selling real estate a positive experience for you!

Amy Bernatchez  
Broker

207-314-2353

**Lakepoint**  
REAL ESTATE

**Michael Breault** Creative solutions for all your Mac needs

**Macintosh and iOS support, based in Western Maine, working onsite throughout Maine**

If you have Macs, iOS devices, software or network problems, websites you'd like built, or any ideas you would like to implement using Macintosh computers, give me a call and we can discuss if I can help...

207-578-0226 • [www.michaelbreault.net](http://www.michaelbreault.net)





## — Real Estate Update —

## Ownership Responsibility

Owning lakefront property, or even property near a lake, brings a certain level of responsibility. Our lakes, waterways and watersheds are managed and protected by different organizations from State Government, Local Government, the EPA, DEP and local conservation organizations, but the ultimate responsibility lies with the landowners.

Many of the regulations of waterfront property ownership are outlined in State and local Shoreland Zoning. The Shoreland Zoning Act was enacted by the State of Maine in 1971 and created a minimum standard of oversight for waterfront properties. Every town ordinance had to meet these requirements, but most are much more stringent than the state guidelines. All of our towns in the region have individual shoreland ordinances that go beyond the state requirements. Each town's standards can be found on the town websites, at Town Hall or through the code enforcement officer.

All of the larger water bodies in our region have their own conservation groups committed to the protection of their waters and lands. These groups rely on the homeowners and lake communities to achieve the planning, work and fundraising needed. These groups manage a wide variety of programs to protect, maintain and remedy problems. These programs include invasive plant removal, Courtesy Boat Inspections, soil erosion programs and community education.

One of the statewide programs designed to partner with homeowners is the LakeSmart Program. LakeSmart is an education and reward program that helps lakefront homeowners manage landscapes in ways that protect water quality. The program is free, non-regulatory, and voluntary.

As real estate professionals, we have a duty to inform buyers and sellers of properties in our watersheds of these responsibilities, and where they can educate themselves on waterfront care. We are required by state and local law to inform home buyers of the need for septic inspections at the sale of a property within the Shoreland Zone.

The health of our lakes is the driving force of the economy and livelihood of our region. The lifestyle and activity that our lakes bring are why the Belgrade Lakes Region is a desirable place to live and vacation. It is the responsibility of everyone in the community and visiting our community to keep our lakes healthy.

How to get involved:

Contact the conservation association for YOUR lake. In the Belgrade Lakes Region, 7 Lakes Alliance works with the individual lake organizations to manage the programs. Educate yourself to how you can help with your property.

BEFORE making any changes to your home or land in a shoreland zone, make sure you read and understand the Shoreland Zone Ordinance in your town, contact the town Code Enforcement Officer, and hire only qualified contractors to do shoreland work.

Owning a waterfront home is a dream that many have achieved, and many more strive to reach. If you are one of the lucky ones to own one, be responsible! Remember that our lakes, rivers and streams belong to everyone and we all need to do our part to keep them healthy.



## 25th Annual Maine International Film Festival to Honor Actor Debra Winger

The Maine International Film Festival (MIFF) will present its annual Mid-Life Achievement Award to actor Debra Winger at a special ceremony held at the Waterville Opera House on Friday, July 15, following a special 35mm screening of "A Dangerous Woman," for which she received a Golden Globe nomination. Best known as an Academy Award nominee for her work in "An Officer and a Gentleman," "Terms of Endearment," and "Shadowlands," Winger has had a stellar acting career, working in a wide variety of genres with directors including Bernardo Bertolucci, Jonathan Demme, James L. Brooks, Bob Rafelson, and James Bridges.

"We're tremendously excited to have Debra join us at the festival this year, and to have the chance to showcase the wide diversity of films that she's given great performances in," said MIFF programming director Ken Eisen.

Winger played Diana Prince's younger sister in the television series "Wonder Woman" before appearing opposite John Travolta in her first major film, "Urban Cowboy," for which she earned BAFTA and Golden Globe nominations. Winger continued to rise to stardom throughout the 1980s and early 1990s, winning a National Society of Film Critics Award for Best Actress for "Terms of Endearment" and a second BAFTA nomination for "Shadowlands." Other accolades followed, including National Society of Film Critics Award nominations for "Everybody Wins" and "The Sheltering Sky" and a Golden Globe nomination for "A Dangerous Woman," co-starring 2016 MIFF Mid-Life Achievement Award honoree Gabriel Byrne. After an acting hiatus in the late 1990s, Winger returned to acting, giving acclaimed performances in "Dawn Anna," "Rachel Getting Married," "Law & Order," and "The Ranch."

The Mid-Life Achievement Award presentation will be followed by a party in Winger's honor at Front & Main, 9 Main Street, Waterville. Admission to the party will be limited to ticket purchasers of the screening and festival pass holders. Winger will be in Waterville for several days of the Festival for screenings of "Mike's Murder," "The Lovers," and "The Sheltering Sky."

"As we celebrate an incredible MIFF milestone this year – our 25th anniversary – we could not have asked for a more influential and adored special guest than Debra, whose groundbreaking career has made such an impact on American cinema," said Maine Film Center Executive Director Mike Perreault.

Festival passes are now on sale at [MIFF.org](http://MIFF.org). The complete MIFF program will be announced on June 10, when tickets will also be made available for purchase online.



**BEST-IN-STATE  
WEALTH ADVISORS**

**SHOOK® RESEARCH**

© 2022 FORBES LLC - USED WITH PERMISSION

**Forbes**

**2022**



**Please call or email us to  
start a conversation**

**207-873-2200**

**[info@goldenpondwealth.com](mailto:info@goldenpondwealth.com)**

Securities offered through LPL Financial, Member FINRA/SIPC





COMPLETE INSTALLATION SERVICE AVAILABLE | 15 YEAR WARRANTY | FACTORY DIRECT PRICING  
**FREE SHORELINE ASSESSMENTS & ESTIMATES**

## YOUR PASSION FUELS OURS

*Discover the ShoreMaster difference.*

Shoremaster aluminum docks are strong, lightweight and easy to handle and take out. The decking panels are removable and the easy adjust legs are 5-sided for extra strength.

**LARGEST SHOREMASTER DISTRIBUTOR in the COUNTRY**

# Hammond Lumber Company

**21 LOCATIONS ACROSS MAINE**

View our Online Shoremaster Catalog  
**WWW.HAMMONDLUMBER.COM/SHOREMASTER**

Auburn • Bangor • Bar Harbor • Belfast • Belgrade • Blue Hill • Boothbay Harbor  
 Brunswick • Bucksport • Calais • Camden • Cherryfield • Damariscotta • Ellsworth  
 Fairfield • Farmington • Greenville • Machias • Portland • Rockland • Skowhegan

**FREE DELIVERY\***

\*In our normal delivery areas. Delivery charge may be applied to outlying areas.

## GRANITE HILL ESTATES

### A Resident-Centered Lifestyle in a Classic Maine Village

Our campus offers the privacy of your own cottage or apartment with all the benefits and amenities of a full-service community!  
*Best of all, there is always a helping hand, should the need arise.*

**Count on us:**

- Exceptional quality of care
- Fabulous dining options
- Engaging & safe social programs
- Beautiful surroundings

**Schedule a personal visit call:**  
**207.626.7786**

Cottage Homes, Independent Living,  
 Assisted Living & Memory Care

60 Balsam Drive | Hallowell, ME | [GraniteHillEstates.com](http://GraniteHillEstates.com)

# Welcome back to the lakes!

|  |  |  |   |  |   |
|--|--|--|---|--|---|
| <p><b>PORTER LAKE</b> Perfect year round lakefront home- Lots of renovations and updates already completed.</p> <p><b>MLS 1530533     \$799,000</b></p>  | <p><b>HISTORIC DISTRICT</b> The Cliff Dunn house circa 1879 in Mount Vernon Village offers 3 beds 2 baths and extensive updates. Ready to move right in!</p> <p><b>MLS 1530037     \$589,000</b></p>                                       | <p><b>LONG POND</b> Enjoy the lake life to the fullest in this year-round 3BR/2BA home that is just steps to the water and a short distance from Belgrade Village!</p> <p><b>MLS 1528971     \$1,950,000</b></p> | <p><b>FLYING POND</b> Charming 3 bedroom camp with 102' on eastern shore of beautiful Flying Pond. A 26x12 screened in porch over looking the pond with plenty of room for entertaining and relaxing.</p> <p><b>MLS 1531582     \$425,000</b></p> | <p><b>ECHO LAKE</b> This is a rare opportunity to own 3 cottages side by side with 180 degree views of the lake from each cottage, 150 feet of deeded waterfront all on a year-round town maintained road!</p> <p><b>MLS 1531127     \$399,900</b></p> | <p><b>MESSALONSKEE</b> Private lakeside retreat on the Eastern shore of Messalons-kee Lake in Sidney. Enjoy spectacular sunsets from your lakeside deck and swim from your private beach.</p> <p><b>MLS 1529935     \$885,000</b></p> |
| <p><b>BELGRADE</b> The estate of portrait artist Cecily Diamond. 211 acres of privacy in Belgrade. The home is a design by architect and author Scott Nearing!</p> <p><b>MLS 1528499     \$1,500,000</b></p> | <p><b>TORSEY POND</b> Look no further for your very own piece of heaven! This custom hand-built, pegged mortise and tenon construction log cabin with 27 acres &amp; over 2,500' of waterfront</p> <p><b>MLS 1521914     \$975,000</b></p> | <p><b>NORTH POND</b> Turn-key duplex and 6,250SQFT building known as the Sunbeam Roller Rink with 75' of waterfront on North Pond.</p> <p><b>MLS 1521005     \$1,100,000</b></p>                                 | <p><b>LONG POND</b> Deep water frontage and SUNSETS!! This 2AC building lot is the last property on a private dead end road offering complete seclusion!</p> <p><b>MLS 1528972     \$699,000</b></p>  | <p><b>PARKER POND</b> Lifestyle of extraordinary privacy and seclusion. A rare opportunity, this unique estate offers over 2,000 feet of private water frontage on majestic Parker Pond.</p> <p><b>MLS 1528695     \$685,000</b></p>                   | <p><b>ROME</b> Beautiful building lot on Augusta Road/Route 27 featuring 3 private, wooded acres surrounded by conservation lands of the Kennebec Highlands</p> <p><b>MLS 1495949     \$39,900</b></p>                                |

221 MAIN STREET | BELGRADE LAKES | 207.495.3700

BELGRADELAKEPOINT.COM