

Summertime in the Belgrades



... Serving the Central Maine Lakes & Kennebec River Corridor

—A Cider Mill Press Publication—

VOLUME 21, NUMBER 2

Twenty-Five Years Ago: Oh, What a Time of Change

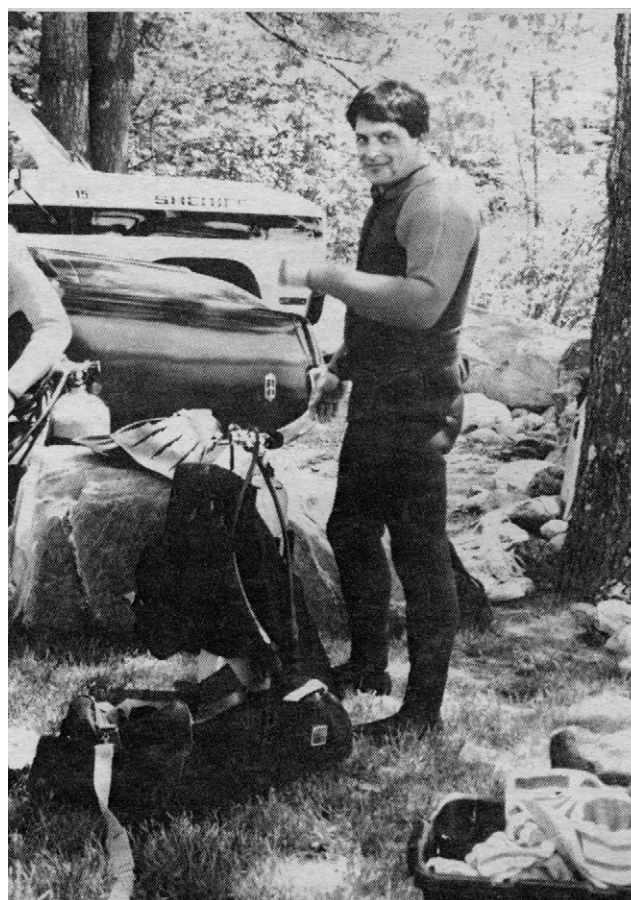
by Esther J. Perne

The season of 1994 was a pivotal summer for the region, for the Belgrade chain of lakes, for central Maine and for the century-old tourism trend of rustic camps, small seasonal businesses and relaxed resort lifestyles.

In the summer of 1994 many were the beginnings of change that have carried over into today, that have resulted in more appreciation of the natural and economic resources of the area, more attention to the required stewardship of the region and more acknowledgement of the emerging importance of regional links.

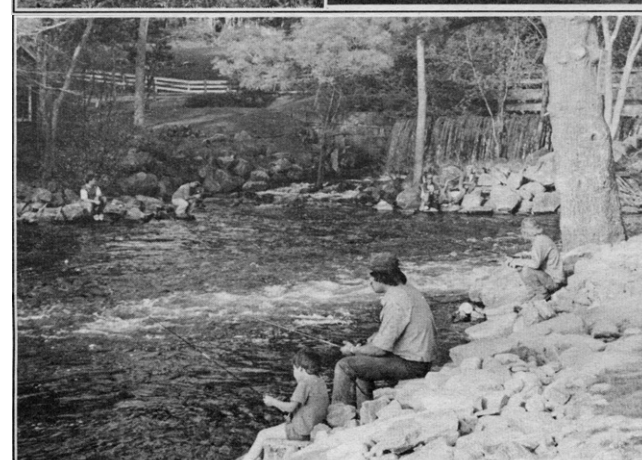
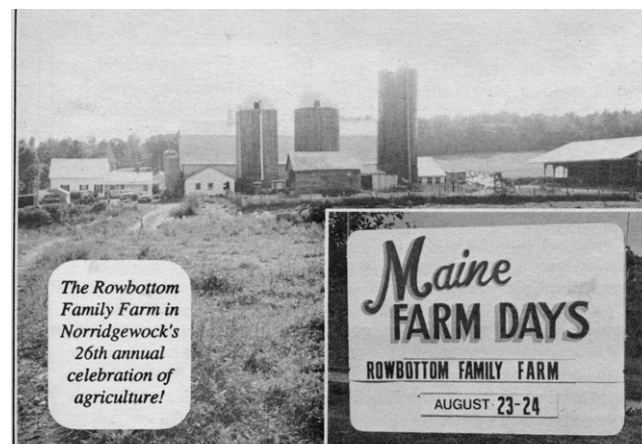
Being linked together by a chain of lakes, which is where it all begins, is no small responsibility and the link of the lakes solidified a lot during the summer of 1994. It prompted the expansion of social activities and environmental concerns. It prompted an acceleration of education and information about all the lakes, all the towns, all the properties. And it prompted a resurgence of lake associations and a revival of those long in place.

The mantra in 1994 was do go near the water, do so safely. It wasn't unusual to see the Central Maine Association of Rescue Divers practicing off Peninsula Park in Belgrade Lakes which offered good water clarity and depth and rough rapids from the dam to simulate river rescues. Among the divers, the Kennebec County Sheriffs



had one of the most active and dedicated diving units in the state, with 12 divers part of the department staff.

Going near, getting into, caring for the lakes was especially called into play by Lake Week '94: the annual celebration of Maine's lakes - a time to



educate, publicize, promote through lake awareness activities. Started in 1988 with assistance and funding from the Maine Department of Environmental Protection, Lakeweek in 1993 was taken over by the Congress of Lake Associations -

Continued on page 2

Mid-Maine Marine Inc.
885 Kennedy Memorial Drive, Oakland, ME 04963
1/2 Mile West of Exit 127 off I-95 • 1-800-649-2628
www.midmainmarine.com

HARRIS
IN STOCK
20, 21, & 22 FT

PLAY FISH SKI RELAX

Join us...and help
protect our lakes!

Protect and Preserve

Belgrade Lakes Association
137 Main Street, Belgrade Lakes, Maine 04918
207-512-5150 • www.belgradelakesassociation.org

22nd Annual
MIFF
Maine International Film Festival

10 Days | 100 Films
Railroad Square Cinema
Waterville Opera House

July 12-21, 2019

Order your Festival Pass today!

MIFF.org



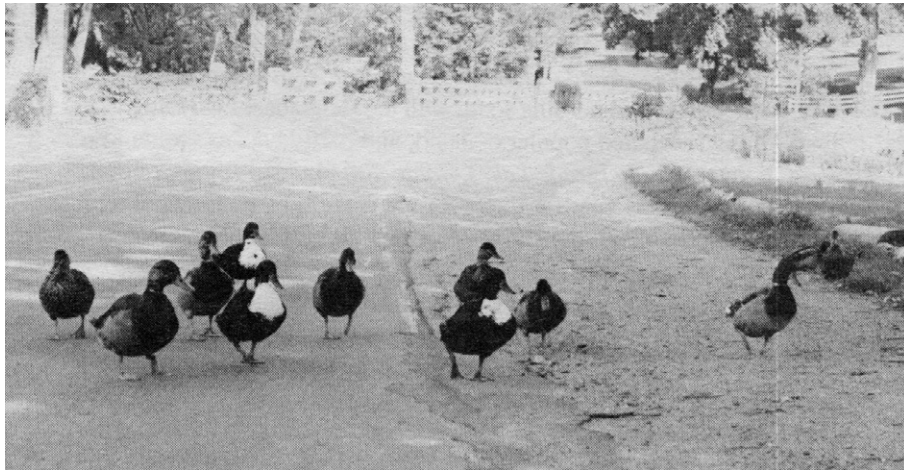
Continued from page 1

COLA (now known as the Maine Lakes Society) but was implemented uniquely by each lake association's clean-up and appreciation endeavors such as the No-Octane Regatta, Anything-But-Fish Derby, Wildlife Paddle and decorated boat parade.

The highlight of Lake Week '94 was the COLA conference at Colby College in Waterville and the highlight of the conference for Belgraders may have been the pronouncement by director of China Lake's remediation, George Lord, that Great Pond would be next to turn green, a pronouncement that would become the watershed's catalyst to proactivity year round.

Year-roundness became one of the biggest changes that can be credited to the developments of 1994: year round meetings and newsletters, expanded memberships, getting all the lake associations to work together. Indeed, the first combined meeting of all the lake associations of the Belgrades was held that September to explore alliance alternatives which soon led to the establishment of the Belgrade youth conservation corps, to a strong relationship with Colby College - which was invited to use upper Long Pond as a classroom that fall and to the eventual preparedness for other challenges the lakes continue to meet.

It wasn't all lake news in the summer of 1994. Indeed Maine Farm Days, basically a trade show for farmers, which was held at the Rowbottom



Family farm in Norridgewock almost had a crowd control situation due to the unanticipated attendance of nonfarmer folks who rode the wagons, took the tours, ate the ice cream and loved the whole experience.

By summer's end, one trend was certain. 1994 was a golden era for volunteerism. The information building on Route 27 on the southern approach to Belgrade was open daily, staffed by volunteers and their ideas, material, labor and time (especially time) were all part of their contribution to promoting the vacation experience to

passersby and welcoming visitors from six other countries and eighteen other states.

By summer's end there was also, well... the promise of controversial construction in downtown Belgrade Lakes. After 70 years, it was time for a new bridge across the Belgrade Stream (aka The Channel) and even though the Maine Department of

Transportation assured the anglers in the community that the dam area would be open in time for fishing many other residents had serious concerns. Would spectators still be able to line the bridge to listen to the annual loon calling contest. Would pedestrians still have their scenic sidewalk on the Lond Pond side. And, what about parking?? Four spaces, it was rumored, would be lost.

As they say, the more things change, the more they remain the same.



Call
495-3777 to advertise
in
Summertime in the
Belgrades

Support at any point in your life

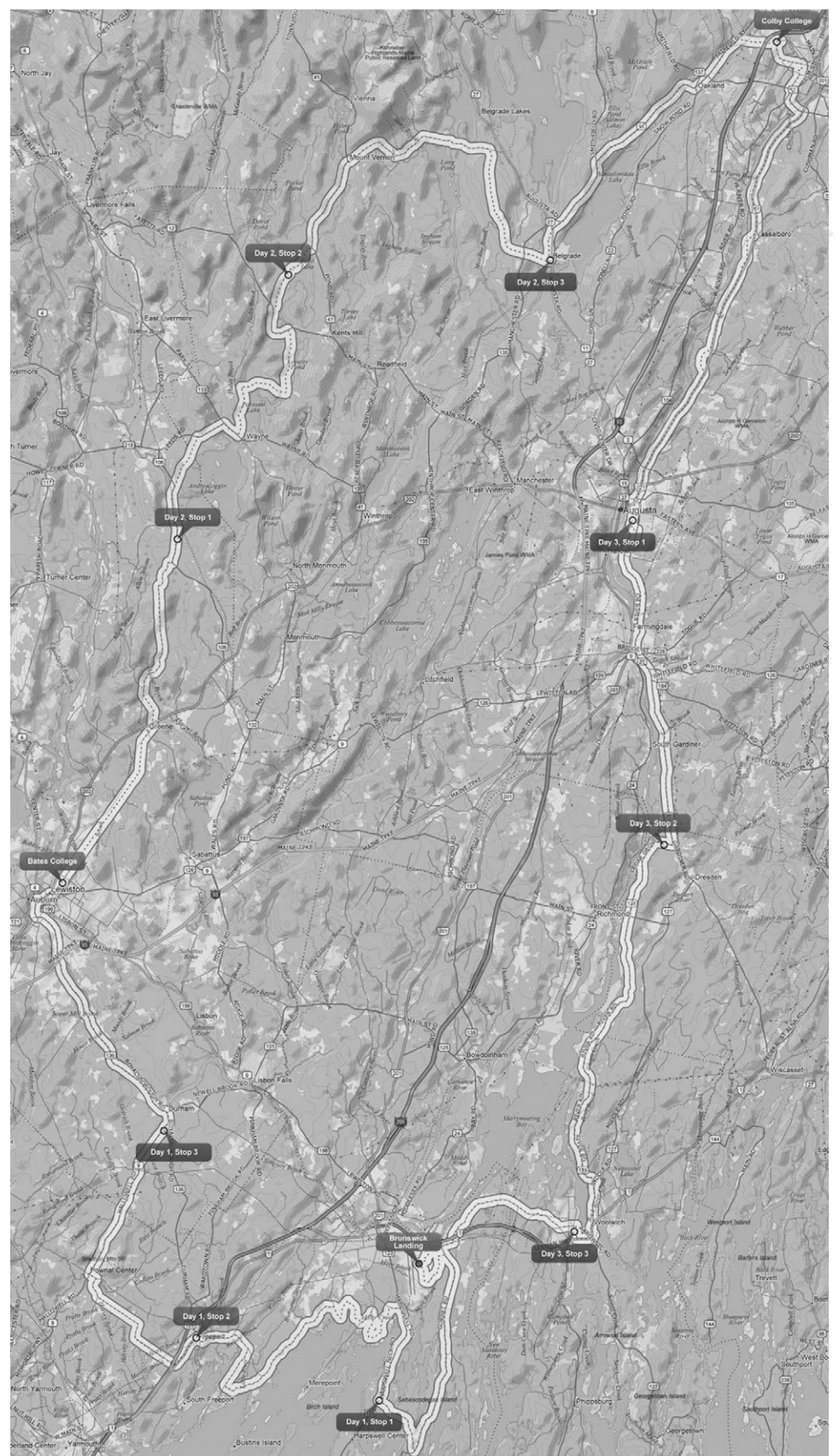
- Skilled nursing, personal care support and companionship services available.
- We can provide assistance with housekeeping, errands, and hygiene.
- Post-operative, short term, respite, and long term care available.
- As little as four hours a week up to twenty four hours a day

**Contact Jillian Jolicoeur, RN-BSN, MHA today
for your free in home assessment!**

**Assistance
PLUS**



**1-800-781-0070 ext. 408
www.assistanceplus.com**



New 2019 Trek Across Maine Route



Table of Contents

Oh, What A Changing Time - 25 Years Ago..... 1-2

Table of Contents..... 3

Trek Across Maine Will Cross Through Belgrade 3

"The Luckiest Boy" When the Grandkids Come to Visit..... 4

"Take It Outside" with Pete Kallin: Summer Recreation in Full Swing..... 5

Directory of Where, When, What Town by Town..... 6-7

Dam Keeper's Report: Pond Levels Spot On..... 7

Calendar of Events: Awesome Activities 8-9

Kennebec Corridor Map: Along the Mighty River..... 9

Gaslight Theater in Hallowell Presents "A Little Murder" 9

Belgrades Watershed Map..... 10-11

Upcoming throughout the summer..... 12

Experience Blistered Fingers: Music at Litchfield Fairgrounds..... 12

Conservation Too: Invasives - The Plant Variety..... 13

Accommodations: Tarry A While..... 14

Notebook: Announcements, Notes, News..... 14

Dining Suggestions: Fine Food to Picnic Fare..... 15

Business Directory: The Best Businesses and Services Guide 16-17

Books by Martha Barkley: Popham Colony - The First English Settlement..... 18

What to do with a Dead Loon..... 19

Bike Trek Across Maine
Taking A New Route



A brand new Trek route signifies the 35th Anniversary celebration of the American Lung Association's Trek Across Maine - Cycle For Air.

New this year the 180-mile journey, June 14 through 16, will start and finish at Brunswick Landing and will include overnight stops at Bates College in Lewiston and Colby College in Waterville as well as a day stop in Augusta.

The largest fundraising event for the American Lung Association nationwide, since 1985 the Trek Across Maine has raised more than \$25 million. It welcomes bikers 7 years of age and older of all physical levels and abilities. Bikers 7 through 17 years of age must be accompanied by a parent or legal guardian at all times and both child and parent are required to meet their respective fundraising minimums.

The Trek also welcomes nearly 700 volunteers to facilitate food service, traffic control, rest stop support, luggage transportation and more. Corporate and community groups are encouraged to participate.

As for spectating, in the Belgrades on day two - Saturday - about 2000 cyclists will be riding through Mount Vernon and south on the West Road and Minot Road toward Hammond Lumber.

For more information about fees, fundraising and logistics visit TrekAcrossMaine.org. To learn how to start or join a team call 624-0302.

Summertime in the Belgrades

--A Cider Mill Press Publication--
PO Box 290, Belgrade Lakes, ME 04918
Editor: Esther J. Perne, 207-495-3777 • ebelnews@earthlink.net
Layout Design: Michael Breault, 207-578-0226 • mo.breault@gmail.com
Webmaster : Gregor Smith • gregor@roadrunner.com
www.sumbelnews.com

This publication is copyrighted ©MMXIX, Cider Mill Press Publications, All Rights Reserved.

CAYER SECURITY

RESIDENTIAL • COMMERCIAL • FINANCIAL

- Burglary & Fire Alarms
- Alarm Monitoring
- Access Control
- Video Surveillance

VOTED
Greater Waterville's
BEST
SECURITY COMPANY
5 Years Running
2013 - 2017

453-9177
www.cayersecurity.com

NORTH BAY ESTATES
ROUTE 8 • NORTH BELGRADE

~ **FOR SALE** ~

Custom Built Homes
by *Craig's Carpentry*
1 & 2 acre lots
with lake views from
Great Pond overlook
Craig Alexander
cell (207) 649-3749 • crgsnbe@yahoo.com

Advertising in
Summertime in the Belgrades
really works!

Call 207-495-3777
for rates and information.



—The Luckiest Boy—

"The Grandkids are Coming- The Grandkids are Coming"

by Rod Johnson

This may not be as earth shattering as Paul Revere's warning announcement in 1776, but—ask any grandparent what the highlight of their year or season is and the answer is the pretty much the same. After asking several Grammys and Grampies, here are some replies: "Oh, it has to be when the kids come on the Fourth of July"; "Definitely when the grands come for Christmas"; "Whenever we see the kids either at their house or ours."

In contemplating this story I realize that what brought on the notion to use this topic is that our own children and grands are coming to visit during the Fourth of July period. There's much talk about it between Doris and I and we realize that the kids are chatting amongst themselves and making their own plans, too. We hear tid-bits from our children that the grands are now either talking or texting back and forth. Their concerns are who might come, who's going to bunk with whom, who can drive the boat this year, who might make it up on water skis and so on. The excitement is growing for all 3 generations in different ways. As the weeks and months plod along, school gets closer to being over and the summer dreams will soon become a reality. Plans are finalized for each generation. Gram and Gramp have seen to it that the seasonal cottage or home is ready for the ever expanding family. The docks are in, the boats are serviced and sitting idle at their moorings—quietly awaiting their young captains. Mom and Dad have had their own hands full with the juggling of schedules, job time off, travel arrangements, finances and much more. The grandkids have somewhat settled on who is sleeping where, what friend might come for a couple of days, and who got the long straw on driving the boat first.

The elders, having seen this whole process happen before with their

own children, sit back with satisfaction and take it all in. They know that every year is special, not just for them but everyone involved. They know that each visit is unique yet can be similar. They know that their children and grandchildren will be enriched and their horizons broadened during these special times. They know that many life-long friendships may be made, alliances formed and new loves experienced.

In many small Maine inland communities, our case being the Greater Belgrade Area and chain of lakes, we usually frame our thinking about family summer visits being at the lakeside camp or home. This may be the case with us, but we also know that Maine has a large coastal summer influx of visitors that are drawn to the ocean. In our northern wilderness areas upland rivers and mountains abound, offering peace and serenity to others. Whatever your family chooses as an annual gathering place, where bonding is developed and memories are made, do your best to advocate and continue it. I truly believe that what a person gains from these annual visits to their special place is worth it's weight in gold!



Changes?

Updates?

New contact information?

Please let us know...

mo.breault@gmail.com

or ebelnews@earthlink.net

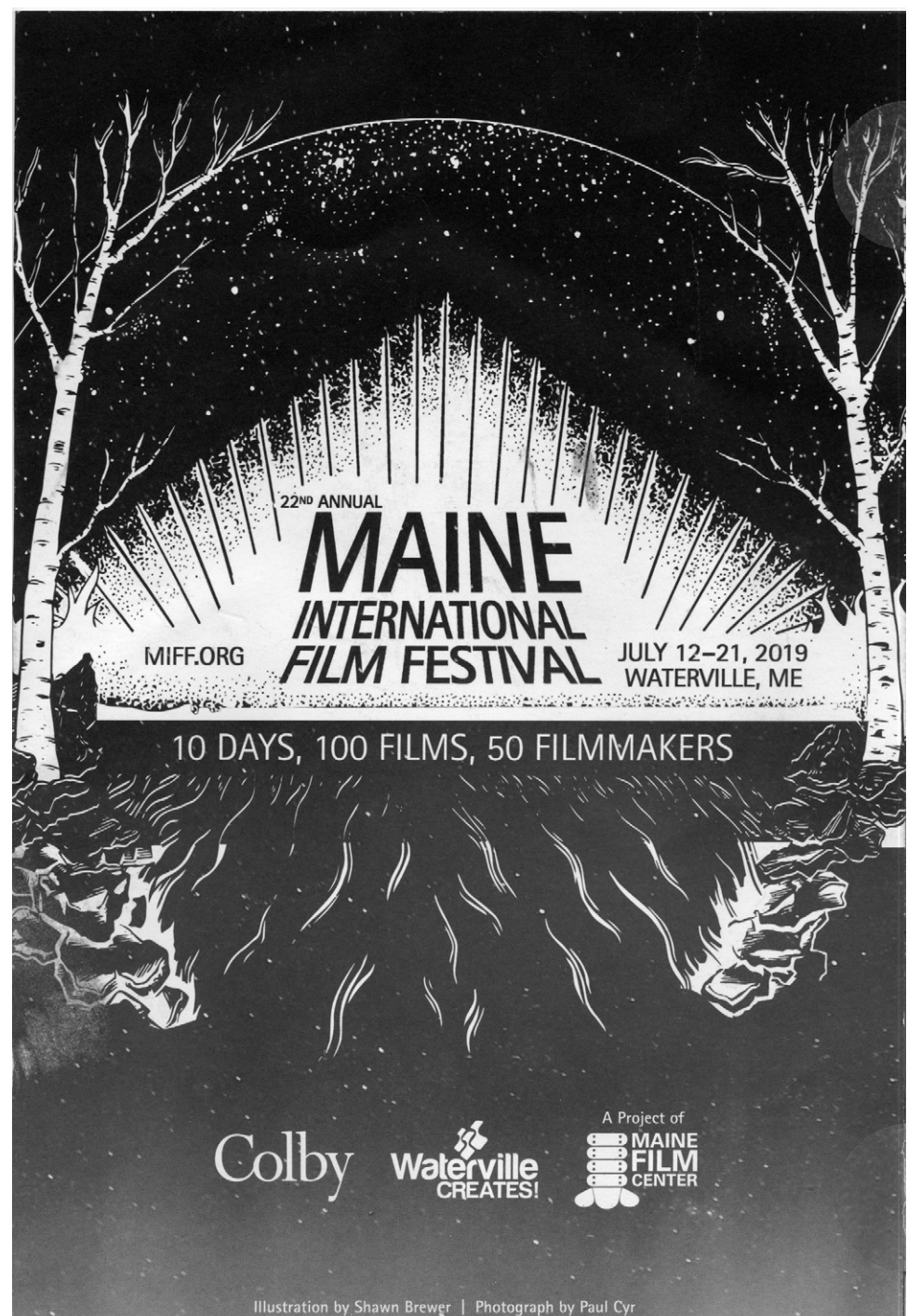


winery & distillery
Oakland, Maine

Bruce Olson, maker of Absinthe,
Limoncello, and locally sourced,
internationally recognized
wines and spirits.

152 Fairfield St
Oakland, ME 04963
207-465-3007

www.treespiritsofmaine.com





— Take It Outside —

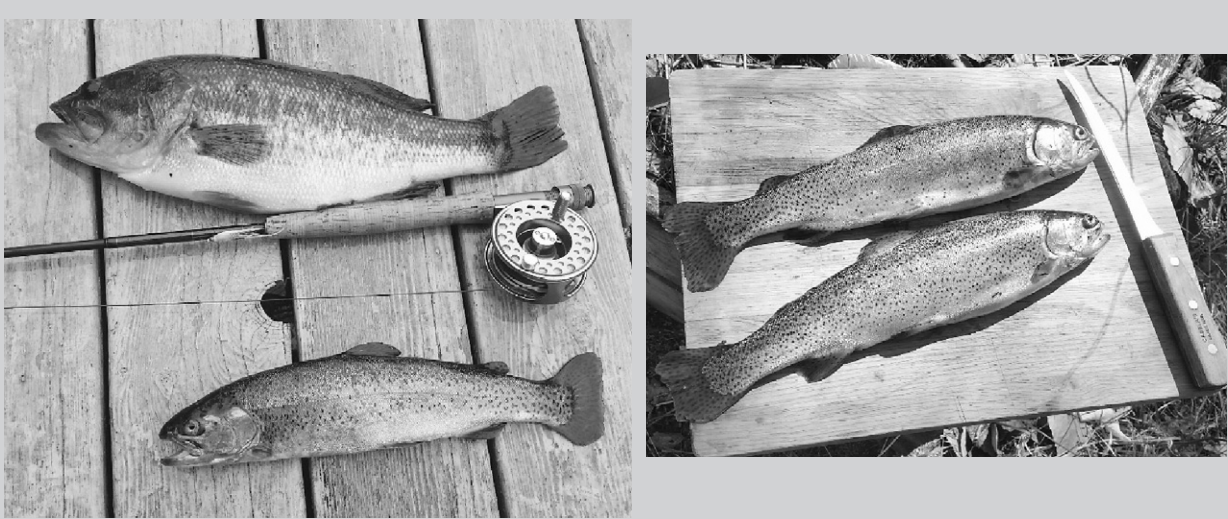
Summer seems to be in full swing, with long lines at Day’s Store and more out-of-state license plates than Maine plates on the cars parked in the village. The 7 Lakes Alliance (7-LA, formerly BRCA) and Friends of Messalonskee (FOM) Courtesy Boat Inspectors (CBIs) have been on duty since Memorial Day weekend at the public boat launches in the Belgrades, doing their part to prevent the spread of invasive plants into our lakes. Last year, these CBIs inspected over 15,000 boats between Memorial Day and Labor Day and made multiple “saves” of invasive plants entering (and leaving) our lakes. Please help in this effort by learning how to properly self-inspect your own boat, especially when they are not on duty. Check out: <https://www.youtube.com/watch?v=ZNQ92bBZTcY>).

Every spring I act as a “Fish Friends” mentor for the Atlantic Salmon Federation (ASF). I work with several schools (and the MLRC) to help students raise Atlantic Salmon fry in refrigerated tanks in the classroom from eggs we receive from the National Hatchery at Green Lake in Ellsworth. The students study salmon life cycles and migrations and the fish are eventually stocked into the Bond Brook in Augusta to help restore this Federally-listed endangered species. This year the MLRC and students from Readfield Elementary, Winthrop HS, Messalonskee MS and HS and the Arts After School Program at Snow Pond Academy released nearly 800 salmon fry. This is a great program and gets young people excited about this critical species. Emily Roderick, mother of Analise at Readfield elementary, arrived at the release site a few minutes before the school bus arrived.

Continued on page 17...

Hiking Again

by Pete Kallin



Fish taken on back to back casts near a stream mouth. Mothers Day dinner rainbows.



Averi Gingras & Brook White of New Jersey and North Pond spreading erosion control mulch at the boat launch .

FOR SALE
HOANG
REALTY
623-0623



Cathy Wright:
685-0055



Dave Barnard:
441-8486



Heidi Libby:
603-275-1580



Hoa Hoang:
485-1485



George & Erica O'Connor:
485-0277



Gail Dostie:
242-2017



Heidi Witham:
465-5764

Lakefront Gem has Plenty of Sandy Beach on Great Pond



Dreaming of a Maine lakefront property? Meet 10 Homeward Way, Belgrade.

A rare find indeed, the year-round home sits on a pleasantly private 1.95-acre lot, and comes with 277 feet of superb sandy beach on Hatch Cove, on the eastern shore of Great Pond. Southwest exposure ensures abundant light, and splendid, unspoiled views over the famed Belgrade chain’s largest lake.

Sunsets are especially gorgeous; sightings of soaring eagles and osprey are frequent, and the big birds’ neighborly presence attests to the quality of the fishing.



Views are to be admired from the deck, the huge covered porch, and from windows on all three levels of the spacious, seven-room, 2,195-square-foot traditional saltbox, built in 1993 and scrupulously maintained.

Exposed ceiling beams; a large, lovely kitchen, and an open-concept main level lend character. The three bedrooms include a first-floor master with ensuite half-bath. There’s a first-floor full bath, too (and another upstairs) making single-level living an option.

A wood-burning fireplace, with insert, in the living room; and a wood stove in the basement augment FHA oil heat. Siding, and a roof that’s partly metal, help provide easy-living efficiency.

Ideal for entertaining, ideal for relaxation, the lakefront haven is a quick 30-minute commute to Augusta.

The home is listed for sale at \$725,000 by Hoa Hoang, Broker/Owner of Hoang Realty in Augusta. Please contact Hoa at 207-623-0623 or at realtor2074851485@gmail.com.



Erin Dunning:
931-7679



Joe Grant:
215-5462



Merline Douglas:
485-0138



Pam Armour:
314-7445



Remy Henry:
242-0450



Diane Rossman:
450-1180



Calendar Directory

TOWN BY TOWN...

GREAT VISITS, AWESOME OUTINGS – ART, MUSIC, CULTURE, HISTORY, RECREATION, FARMERS' MARKETS, TRAILS, SCENIC SITES, AND MORE...

AUGUSTA

- **Viles Arboretum**, 224 acres with 6 miles of year round walking trails, including art and sculpture trail, open dawn to dusk, Visitor Center open Monday-Friday, 9 am-4 pm, admission free, 626-7989, www.vilesarboretum.org, 153 Hospital Street
- **Farmers' Market at the Arboretum**, indoors, Friday 1-5 pm
- **Art in the Capitol**, Maine Arts Commission monthly self-guided exhibits in State House hallways (Mon-Fri 8 am-5 pm), Blaine House (call for times), and Maine Arts Commission Office (8:30am-4:30 pm), 287-6746, mainearts.maine.gov
- **Children's Discovery Museum**, CDM, hands-on displays, activities, Tuesday-Thursday 10 am-4 pm, Friday-Saturday 10 am-5 pm, Sunday 11 am-4 pm, admission, 622-2209, www.childrensdiscoverymuseum.org, 171 Capitol Street
- **Danforth Gallery**, Jewett Hall, art exhibits, UMA-1234, www.uma.edu
- **Governor's Mansion**, 1830 Blaine House, Tuesday-Thursday 2-4 pm, 287-2121, www.blainehouse.org, State Street
- **Holocaust and Human Rights Center of Maine**, Michael Klahr Center, Monday-Friday 8 am-4 pm, 621-3530, www.hhrc.uma.edu, University of Maine at Augusta, off Route 27
- **Kennebec Historical Society**, Wednesday-Friday 10 am-2 pm, 622-7718, www.kennebechistorical.org, 107 Winthrop Street
- **Maine State Museum**, Tuesday-Friday 9 am-5 pm, Saturday 10 am-4 pm, \$2 adults, \$1 ages 6-18, 287-2301, www.maine-statemuseum.org
- **Maine State House**, Hall of Flags, House and Senate Rooms, Klir Beck dioramas, Monday-Friday 8 am-5 pm, book tours at Maine State Museum, walk-ins welcome 9 am-1 pm, 287-5600, www.maine.gov, State Street
- **Maine State Library**, Monday-Saturday opens 9 am, 287-5600, www.maine.gov/msl/, State Street
- **Museum in the Streets**, walking/history tour, www.augusta-maine.gov, Water Street/downtown.
- **Old Fort Western**, 1754 fort, house, store, 1-4 pm daily, admission \$6, 4-14 years \$4, 626-2385, www.oldfortwestern.org, Cony Street
- **Riverfront Park**, boat launch, Greenway Trail, playground, eastside Kennebec River
- **Kennebec River Rail Trailhead**, Maine State Housing Authority parking lot, 623-8162, www.krrt.org, Water Street
- **University of Maine at Augusta Fitness Trail**, 2 miles of wooded trails, near Civic Center, Route 27
- **Farmers' Market at Mill Park**, Tuesday 2-6 pm, 626-2305, www.farmersmarketmillpark.org/, North Water Street
- **Farmers' Market at Turnpike Mall**, 549-5112, Wednesday and Saturday 10 am-1 pm, Western Avenue

BELGRADE LAKES

- **Belgrade Lakes Market**, 320-8303, careybor@yahoo.com, Sunday 8 am-1 pm, Main Street

- **Great Pond Mailboat**, 592-1537, Monday-Saturday 9:15 am, Post Office, Main St.
- **The Belgrade Community Center for All Seasons**, pool and lakefront, gym, playground, picnic area, rec programs, 495-3481, www.belgrademaine.com, 1 Center Drive
- **Union Church Coffee House**, check for schedule, 7:30 pm, \$5, 495-3599, www.unionchurchmaine.org, Main Street
- **Belgrade Historical Society**, 495-2973, belgradehistoricalsociety.org
- **Belgrade Lakes Market**, Sun 8 am-1 pm, Main Street
- **Peninsula Park on Long Pond**, picnic tables, Main Street
- **Maine Lakes Resource Center**, 512-5150, www.mainelakesresourcecenter.org, 137 Main Street

FAIRFIELD

- **Fairfield Historical Society**, 1890 Cotton-Smith History House, every Tuesday 9 am-12 noon and 1-4 pm and second Saturday of month, 453-2998, www.fairfieldmehistoricalsociety.net, 42 High Street
- **Farmers' Market**, 948-5724, Wednesday 2-6 pm, Saturday 9:30 am-1:30 pm, Nazarene Church parking lot, 81 Main Street

FARMINGTON

- **Farmington Historical Society, Titcomb House Museum**, 778-4275, Wednesday and Saturday, 11 am-2 pm, July-August, www.farmingtonhistory.org, 118 Academy Street
- **Nordica Homestead Museum**, opera singer Lillian Nordica costumes, jewelry, mementos, 778-2042, Tuesday-Saturday 10 am-12 noon and 1-5 pm, Sunday 1-5 pm, www.lilliannordica.com, 116 Nordica Lane, Holley Road
- **Contra Dance**, 491-9928, www.starleft.org 2nd Saturday of the month, all welcome, 6:30-7:30 pm family dance, 8-11 pm regular dance, admission, Grange Hall, Bridge Street, Route 43, West Farmington
- **University of Maine campus and Arboretum**, four walking tours with informal guide pamphlet to campus trees, 581-1541, www.umaine.edu/arboretum/, downtown
- **Farmers' Market**, 778-6602, Friday 9 am-2 pm, Better Living Center parking lot, Front Street; Saturday 8 am-12 noon, Main Street
- **Meetinghouse Park and Gazebo**, weekly concerts throughout summer, downtown
- **Fairgrounds**, events throughout summer, Franklin County Fair in September, High Street

GARDINER

- **Artdogs and Circling the Square Fine Art Press**, Friday 1-5 pm, Saturday 10 am-4 pm, 582-6600, www.theartdogs.com, 275-277 Water Street
- **Johnson Hall Performing Arts Center**, 582-7144, www.johnsonhall.org 280 Water Street
- **Monkitree**, art exhibits, 512-4679, www.monkitree.com, Tuesday-Friday 10 am-6 pm, Saturday 12-6 pm, 263 Water Street
- **SpinOff Studio**, 588-7297, spinoffstudio.org, Monday-Friday 8:30 am-4:30 pm, 405 Water Street
- **Farmers' Market**, 512-8022, www.gardinerfarmersmarket.org, Wednesday 2-6 pm, rain or shine, The Common
- **Kennebec River Rail Trail**, 623-8162, www.krrt.org, access near Gardiner/Randolph Bridge, 6.5 miles to Augusta
- **Waterfront Park**, picnicking, events throughout summer, Kennebec River

GREENE

- **Araxine Wilkins Sawyer Memorial**, free entertainment programs, monthly - Friday 2 and 7 pm, 946-5311, www.sawyer-foundation.com, 371 Sawyer Road, off Route 202

HALLOWELL

- **Harlow Gallery**, Kennebec Valley Art Association, 622-3813, www.harlowgallery.org Wed- Sat, 12-6 pm, 160 Water Street
- **Gaslight Theater**, 626-3698, www.gaslighttheater.org City Hall, 1 Winthrop Street
- **Museum in the Streets**, history/walking tour, www.historichallowell.org, downtown
- **Farmers' Market**, 622-1350, Sun 3-6 pm, Water Street
- **Vaughn Woods and Homestead**, 166 acre park/trails/homestead, Middle Street
- **Kennebec River Rail Trail**, www.krrt.org, to Augusta, Farmingdale/Gardiner, Water Street
- **Waterfront Park**, deck/walkway on Kennebec River, North Water Street

HINCKLEY

- **L.C. Bates Museum at Good Will-Hinckley School**, early 20th century natural history and cultural exhibits, nature trails and camps, adults \$3, up to 17 years \$1, 238-4250, www.gwh.org Wednesday-Saturday 10 am-4:30 pm, Sunday 1-4:30 pm, Route 201

KINGFIELD

- **Ski Museum of Maine**, 265-2023, www.skimusuemofmaine.org, 256 Main Street
- **Stanley Museum**, 265-2729, www.stanleymuseum.org, memorabilia/displays on photographs, violins and Stanley Steamers, Tuesday-Sunday 1-4 pm, 40 School Street

LIVERMORE

- **Washburn-Norlands Living History Center**, 18th-19th century mansion/farmstead/schoolhouse, library, chapel, 897-4366, www.norlands.org, admission, living history tours Tuesday and Thursday 1-4 pm, 290 Norlands Road

MADISON

- **Lakewood Theater**, Maine's Summer Theater, Young Performers Camp, 474-7176, www.lakewoodtheater.org, Route 201
- **Skowhegan School of Painting and Sculpture**, 474-9345, www.skowheganart.org, summer evening artists lecture series, East Madison Road

MONMOUTH

- **Monmouth Museum**, local and regional Maine history, Wednesday-Sunday 1-4 pm, 933-2287, www.monmouthmuseum-inc.org, 751 Main Street
- **The Theater At Monmouth**, The Shakespeare Theater of Maine, Cumston Hall, 933-9999, www.theateratmonmouth.org, Main Street

MOUNT VERNON

- **D.E.W Animal Kingdom**, Zoo, 293-2837, 918 Pond Rd, Route 41

NEW PORTLAND

- **Nowetah's American Indian Museum and Craft Shop**, 628-4981, www.nowetahs.webs.com/, daily 10 am-5 pm, free,



Elliot B. Thayer, PLS, PE
Andrew Dunbar, PLS, LPF, LSE
RESIDENTIAL & COMMERCIAL
SITE DESIGN
STATE & LOCAL
PERMIT APPLICATIONS
PREPARED & PRESENTED
17 Hasson Street
Farmingdale, ME 04344
582-7762
www.thayereng.com



- Septic Systems
- Complete site work
- Camp road grading
- Lawns installed
- Sand, gravel, stone
- DEP Certified

GENERATORS of MAINE INC.
SALES • SERVICE • INSTALLATION
www.generatorsofmaine.com 207-495-2285

Professional Service At Fair Prices

KOHLER
IN POWER. SINCE 1920.



628-4981, 2 Colegrove Road, Route 27

- **Wire Bridge**, 1864, probably only wire suspension bridge in U.S., off Route 27

NEW SHARON

- **Farmers’ Market**, Saturday 9 am-1 pm, Douin’s Market, 491-9025, 150 Mercer Road, Routes 2/27
- **New Sharon Historical Society**, Saturday 1-3, 778-4167, Routes 2/27

NORRIDGEWOCK

- **Norridgewock Historical Society Museum**, 1838 building, Saturday 10 am-1 pm, 634-5032, www.norridgewockmuseum.com, Mercer Road, Route 2
- **Osoola Park**, picnic area, great playground, boat launch, on Kennebec River, Route 8

OAKLAND

- **Macartney House Museum, Oakland Area Historical Society**, 465-7549, Wednesday 1:30-4:30 pm, 1815 home with antique furnishings and Oakland artifacts, 25 Main Street
- **Town Parks**, playground, picnic tables, swimming area, boat launch area, Belgrade Road on Lake Messalonskee and McGrath Pond Road on McGrath Lake
- **Farmer’s Market**, Friday 2-6 pm, 465-3094, Pine Acres Parking Lot, 895 Kennedy Memorial Drive

READFIELD

- **Readfield Historical Society and Museum** in 1853 school-house, 685-4662, www.readfieldhistorical.org, Thursday and Saturday 10 am-2 pm or by appointment, Route 17, Readfield Depot

ROME

- **Mt. Philip Grange**, suppers 3rd Sat of month, 4:30-6 pm, all you can eat beans, cornbread, rolls, chop suey, pies, Routes 135/225
- **Trails**: Mount Philip, Route 225; The Mountain, Route 27; French's Mountain and Kennebec Highlands, Watson Pond Road; for information call 495-6039 or visit www.belgradelakes.org; maps available at BRCA, 137 Main Street, Belgrade Lakes

SIDNEY

- **New England Music Camp**, concerts free and open to the public, Bowl-in-the-Pines on Lake Messalonskee, 465-3025, www.nemusiccamp.com, 8 Goldenrod Lane, Route 23
- **Sidney Historical Society**, 724-8032, www.sidneyhistoricalalso-ciety.org, 2986 Middle Road
- **Silver Spur Riding Club**, horse shows, River Road, Route 104

SKOWHEGAN

- **Margaret Chase Smith Library**, residence, home, museum exhibits, 474-7133, www.mcslibrary.org, free, Monday-Friday, 10 am-4 pm, 54 Norridgewock Ave.
- **History House Museum**, 1800s local history and culture, heirloom gardens, free, Tuesday-Saturday, 10 am-4 pm, 474-6632, www.skowheganhistoryhouse.org, 66 Elm Street
- **Fairgrounds**, weekly horse shows/competitions, free public events, covered arena, Skowhegan State Fair in August, 474-3621, Madison Avenue, Route 201
- **Farmers’ Market**, Wednesday 3-6 pm, Saturday 9 am-1 pm,

weekly entertainment, 938-3906, Somerset Gristmill parking lot, downtown

SMITHFIELD

- **Fairview Grange**, 362-2791, Route 8
- **Smithfield History Society “The Groves House,”** 634-4392, 21 Lakeview Drive
- **Sunbeam Roller Rink**, 362-4951, 830 Village Rd, Route 8

UNITY

- **Unity College Centre for the Performing Arts**, folk genre music, 568-3147, www.unitymaine.org, 42 Depot Street

WATERTVILLE

- **Aqua City Actor's Theatre (ACAT)**, 873-7000, www.acattheatre.org. Waterville Opera House Studio Theater, Main Street
- **Museum in the Streets**, downtown history /walking tour, www.themuseuminthestreets.com/waterville.htm
- **Head of Falls Park/Two Cent Bridge**, historic foot bridge over Kennebec River connecting Waterville and Winslow, Front Street
- **Common Street Arts**, 872-2787, www.commonstreetarts.org, Wednesday through Saturday noon to 5 pm, Thursday until 6 pm, 93 Main Street
- **Colby College Museum of Art**, 859-5600, www.colby.edu/museum/ Tuesday-Saturday 10 am-5 pm, Sunday 12-5 pm, free admission, Colby College Campus, Mayflower Hill
- **Colby College Special Collections**, Miller Library, Monday-Friday 10 am-12 noon and 1-4 pm, free admission
- **Thomas College Art Gallery**, 180 West River Road
- **Waterville Historical Society and Redington Museum**, 1814 home and pharmacy, 872-9439, www.redingtonmuseum.org. Tuesday-Saturday tours at 10 and 11 am, 1 and 2 pm, 62 Silver Street
- **Waterville Opera House**, 873-7000, www.operahouse.com, 93 Main Street
- **Farmers’ Market**, Thursday 2-6 pm, 680-2055, www.watervillefarmersmarket.org,

WAYNE

- **Farmers' Market**, 685-4657, <http://waynefarmersmarket.weebly.com>, Saturday 9 am-noon, Town Green, at the Mill Pond, Main Street

WILTON

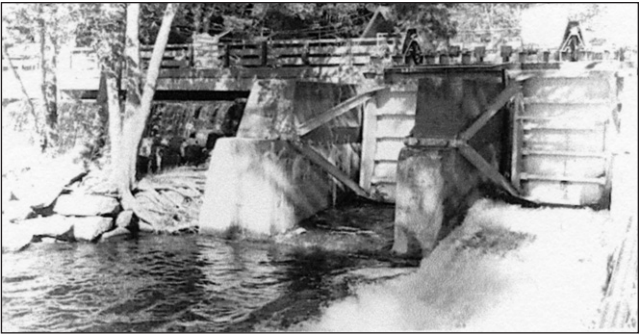
- **Wilton Farm & Home Museum**, 645-2091, 645-4578, www.thewiltonfarmandhomemuseum.org, Saturday 1-4 pm or by appointment, 10 Canal Street

WINSLOW

- **Fort Halifax on the Kennebec River**, historic fort tower, park, Route 201

WINTHROP

- **Norcross Park**, playground, picnic site, boat launch on Maranacook Lake
- **Farmers’ Market**, 446-2899, Tuesday and Saturday 9 am-1 pm, town office parking lot, 17 Highland Avenue



The Dams Keeper Report

Believe it or not, we’re starting this Summer with pond levels, right where they are supposed to be! As of this writing, both the Village spillway (Great Pond) and Wings Mill (Long Pond) dams are a good 3” above full pond

We have had far more precipitation this Spring than what was in the long term forecast, which has been a nice problem to have. Great for both the gardens and the habitat. The long term forecast for this summer is an average 23% less precipitation than normal, just like the past three: <http://longrangeweather.com/weather-forecasts/US-City.aspx>. So we are looking at another dry, slightly cooler but just plain superb summer. Although this Chamber of Commerce weather is great for boating and water clarity, the lack of precipitation will be another challenge for both our water levels and our gardens!

And remember, with 85°F air temperatures, we lose ¾” per day just to evaporation, so although we’re starting off in great shape, we remain vigilant in keeping our ponds as full as possible.

We hope you enjoy your summer here in the beautiful Belgrades.

Respectfully,
Dick

Dick Greenan
Secretary, Belgrade Lakes Watershed Dams Committee

Call 495-3777
to advertise in
Summertime in the
Belgrades

**J & M Logging, Inc.**
622-6353
*Cut to order
in lengths from 14” to 23”*
Firewood
*Green Certified Wood, Seasoned, & Ash
Cut, Split & Delivered*
853 Civic Center Drive, Augusta, ME 04330

Innovative Painting, LLC.
Epoxy Sales & Services
Residential/Commercial/Pressure Washing/
Interior/Exterior/Spray, Brush & Roll
Brian C. Jones
restorationjones.com
jonesbrian67@yahoo.com
(207) 462-4822

**BELGRADE BOAT
STORAGE**
DARE TO COMPARE
Best Prices on Inside,
Outside Boat Storage,
Shrinkwrapping &
Winterization

Craig Pooler
Cell: 207-314-3287 • Office: 207-495-3421
Email: belgradeboatstorage1@yahoo.com
www.BelgradeBoatStorage.com



— Calendar —

Wednesday 6/12 through Saturday 6/15 -
"Over the River and Through the Woods," 474-7176, Lakewood Theater, Route 201, Madison.

Thursday 6/13 through Sunday 6/16 -
Monmouth Fair, new midway (Smokey's Greater Shows), Woodsman's Day, truck demonstrations, food, vendors, exhibits, admission fee, off Route 202, Fairgrounds, Monmouth.

Friday 6/14 through Sunday 6/16 - Trek
Across Maine, sponsored by the American Lung Association, depart and return to Brunswick with overnights at Bates College in Lewiston and Colby College in Waterville, TrekAcrossMaine.org

Friday 6/14 through Sunday 6/16 - "A Little Murder Never Hurt Anybody," \$12 adults, \$10 students and seniors, 7:30 pm Fri and Sat, 2 pm Sun,

Friday 6/14 - Poetry presentation, Mark Meinicove and David Sloan, part of The Bookey Readings at The Harlow, public invited, 7 pm, 622-3813, 100 Water Street, Hallowell.

Friday 6/14 through Sunday 6/16 -
"Ripcord," an epic feud between two little old ladies at a retirement home, Marie Cormier and Birdie Newman Katz starring, Opening Night Friday 6/14, 7:30 pm Fri and Sat, 2 pm Sun, 873-7000, Waterville Opera House, 93 Main Street, Waterville.

Saturday 6/15 - Learn about Mammals, for families and children, what do humans, whales and bats have in common? - quite a lot, find out in this informative program, 1-2 pm, 238-4250, L.C. Bates Museum, Route 201, Hinckley.

Saturday 6/15 - "Fifty Years in a Foxhole," living through and after Vietnam with Charles Kniffen, 10 am, 626-2415, Lithgow Public Library, 45 Winthrop Street, Augusta.

Monday 6/17 - Pineland Suzuki School, An Evening of Music, fiddling, folk songs and classical, 6:30 pm, 626-2415, Lithgow Public Library, 45 Winthrop Street, Augusta.

Monday 6/17 - Full Moon Hike, 7 pm, 495-6039, Maine Lakes Resource Center, Main Street, Belgrade Lakes.

Wednesday 6/19 - "Risking Lives and Fortunes...Maine's Underground Railroad" with Mark Alan Leslie, 6:30 pm, 622-7718, Congregational Church, 9 Church Street, Augusta.

Wednesday 6/19 - "Tickle," Waterfront Wednesday Free Concert, concessions,

activities for children, 6 pm, Waterfront Park, Downtown Augusta.

Thursday 6/20 through Sunday 6/23 -
Blistered Fingers 52nd Family Bluegrass Music Festival, 11 bands, camping, concessions, large tent for spectators, 873-6539, Fairgrounds, Litchfield.

Thursday 6/20 through Sunday 6/23 -
"Big Fish," 474-7176, Lakewood Theater, Route 201, Madison.



Marie Cormier and Birdie Newman Katz star in the Waterville Opera House production of "Ripcord" opening Friday, June 14.

MAINE-ly ELDER CARE

"Caring for the ones who cared for us"



In - Home Nursing • Personal Care Services • Homemakers
• Emergency Response Systems • Transportation Services

STATE REGISTERED PERSONAL CARE
AND HOMEMAKER AGENCY

465-3249

28 Center St., Oakland, Me 04963

www.Maine-lyElderCare.com

denise@Maine-lyElderCare.com

New Customers Reserve Now - Openings Fill Quickly



Belgrade Lakes Marine & Storage, Inc.

Winter Storage for Summer Vehicles

Secure newer storage facilities accommodate boats on trailers, autos, and the largest RVs in 3 buildings totaling over 21,000 sq. ft. Electrical charging outlets are available. Reasonable rates for real protection from extreme winter storms and sun damage.

207-495-2378 • www.belgradelakesmarine.com

366 Augusta Road, Route 27, Belgrade, ME



June Youth Events at the Winslow Public Library

Ongoing

Storytime-Every Tuesday at 10am (ages 0-7)
Lego Club-Friday June 7 and 14th from 2:30 to 4pm (grade K-8)
Teen Dungeons and Dragons-June 5 and 19th from 4pm to 6pm (ages 12-18)

Special Events

June 20 at 6:30pm Summer Reading Kick-Off with Northern Stars Planetarium (all ages)

Join us at the Winslow Public Library to kick off the summer reading program with Northern Stars Planetarium. We will have two shows in the dome planetarium: one geared towards grades K-2 and one geared towards grades 3-7. These shows are exciting and interactive. Stay after for some milk and cookies. This is also a great opportunity to sign-up for our summer reading program! We have BINGO cards and prizes for those from birth to age 101!

June 21 at 3pm Teen Kick-Off Movie: Spiderman: Into the Spideverse (age 12-18)

Join us at the library for Spider-Man: Into the Spider-verse to kick off our teen summer reading program and leap into the universe of Spider-Man stories. Movie snacks will be provided. Geared towards ages 11 to 18.

June 24 9:30-10am Baby/Toddler Time (ages 0-2)

Join us at the Winslow Public Library for a baby and toddler storytime. We will have a book, lots of movement, dancing songs and instruments. Geared towards ages 0-2.

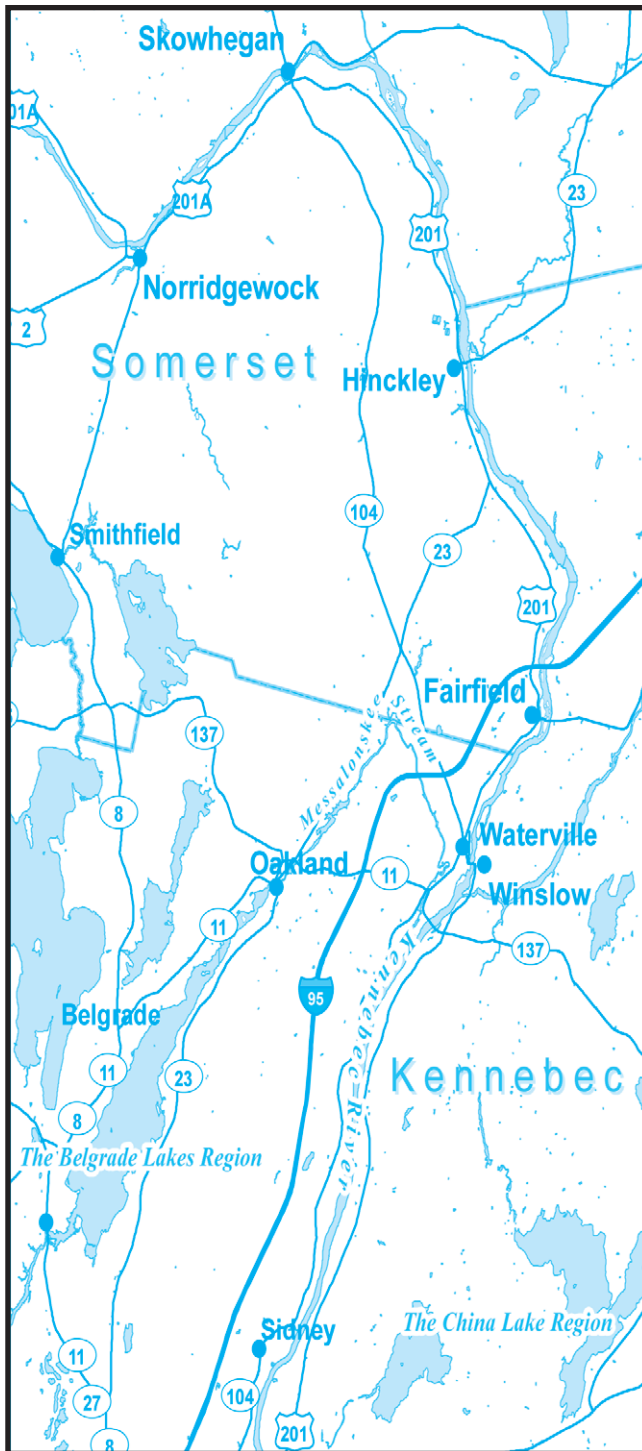
June 25 3pm Space Reader's Theater (grade 2 and up)

Join us at the library to bring a story to life through reader's theater. We will warm up with some improv, charades and acting games. We will have a short script inspired by a book. Geared towards grades 2 and up.

June 26 2-4pm Teen Board Gaming (age 12-18)

Join us at the Winslow Public Library for a board

Kennebec Corridor



game afternoon. Feel free to bring your own board games to share and or play some of ours to play with friends or meet new ones. Geared towards ages 12 to 18.



"A Little Murder Never Hurt Anybody"
is now playing at the Gaslight Theater in Hallowell.

Air Conditioned • Ample Parking

QUALITY ANTIQUES

New Merchandise Arriving Daily!

- 10,000 Sq. Ft. Multi Dealer Emporium
- Quality Antiques
- Well lit, clean and organized
- Period Furnishings to Mid-Century Modern
- Discover the Gem that is Hathaway Mill Antiques, sister shop to Cabot Mill Antiques!!

In the iconic former Hathaway Shirt Factory

HATHAWAY MILL ANTIQUES
Open Daily 10am-5pm
10 Water St., Waterville, ME
207-877-0250
Like us on Facebook & Follow us on Instagram!

www.hathawaymillantiques.com
email: info@hathawaymillantiques.com

NEW ESTATE JEWELRY.

L. TARDIF JEWELER
62 Main Street Waterville, Me.

Tues - Sat
9 - 5

est. 1935

207-872-7542

LakeHouse™ Renovations

Design • Build • Renovate

Traditional Style Camps,
Cottages and Lakefront Homes

207.242.3663

ACME LAND SURVEYING, LLC
Professional Land Surveyors – Professional Foresters
Property Surveys, Subdivisions, Topographic Surveys, MLIs,
Elevation Certificates/LOMAs, ALTA/ACS Surveys,
Deed Research, Wetland Delineation, Forest Management

108 Fairbanks Rd., Suite 5 Farmington, ME 04938
Website: www.acmelandsurveying.com

Tel. (207) 778-4081
Toll Free (800) 778-4081
Email: info@acmelandsurveying.com

DAY'S REAL ESTATE

"The Waterfront Specialists"

262 Augusta Road, PO Box 284
Belgrade Lakes, Maine 04918
207-495-3111
www.daysrealestate.com
daysrealestate@roadrunner.com





Lynch

LANDSCAPING INC.
FOR THOSE WHO DESIRE QUALITY

207-474-2420

Design - Install - Maintain

Designing landscapes to beautify your property and protect our natural resources - *Installing* these landscapes in a manner that promotes sustainability and prevents erosion - *Maintaining* these landscape so your investment lasts a life time



Licensed, Certified & Accredited
For All Of Your Landscaping Needs

www.lynchlandscaping.com



Belgrade Vacation Rentals

LAKEFRONT RENTALS

Contact Us Today!

(800) 760-1503

www.BelgradeVacationRentals.com

Own A Property? We Will Rent it for You!



RAILROAD SQUARE CINEMA

Showing the Best of World and American Cinema


17 Railroad Square, Waterville, Maine, 04901

24-hour movie info:
207-873-6526


www.railroadsquarecinema.com



Home of the
Maine International
Film Festival
(July 13 - 22, 2018)
www.MIFF.org



free and open to the public



Colby College Museum of Art
Waterville, Maine
colby.edu/museum
207.859.5600



ST. MICHAEL SCHOOL

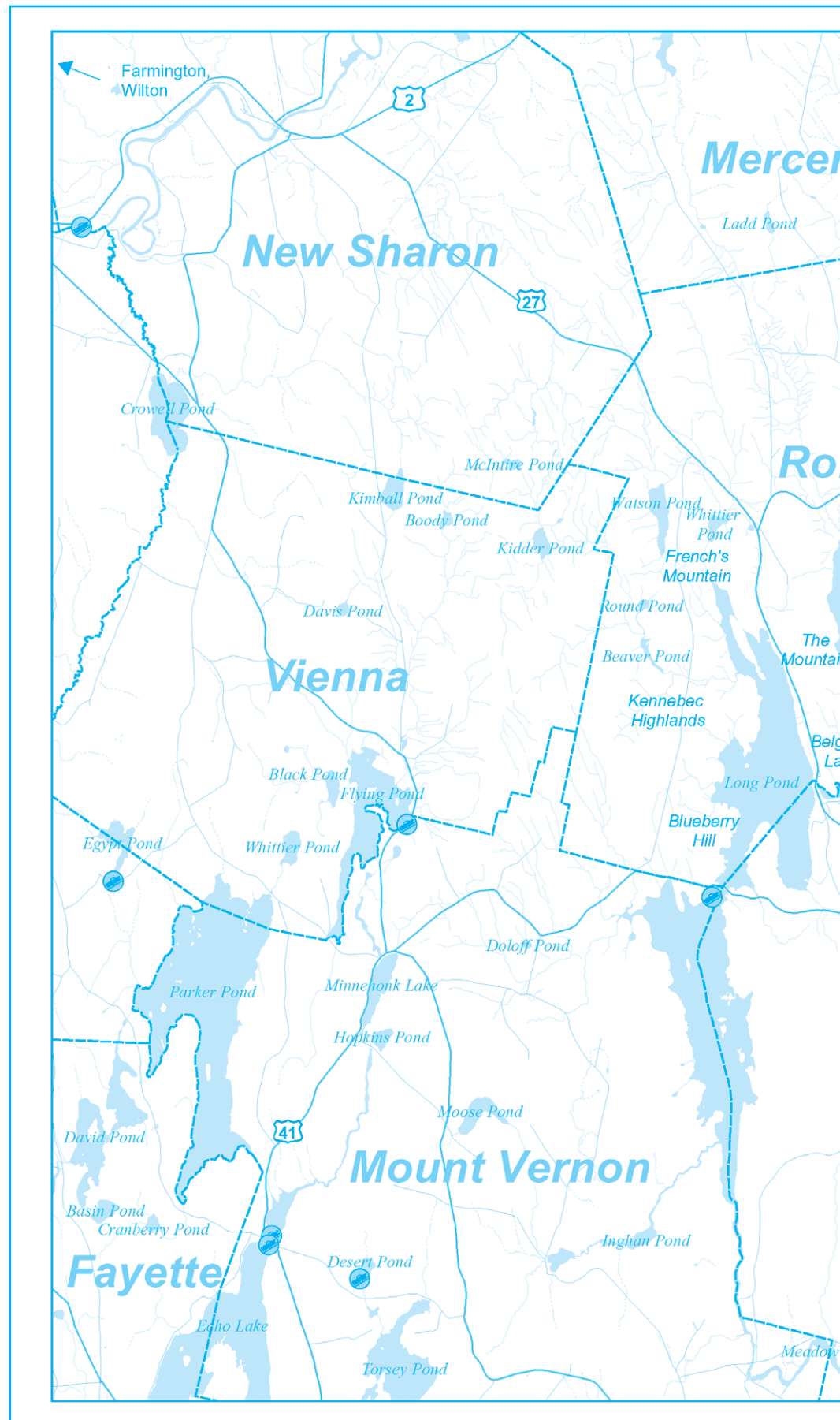
56 Sewall Street, Augusta, ME 04330
207.623.3491 www.smsmaine.org

Registration is Open for 2019-2020!

St. Michael School, a Catholic school in Augusta, Maine, while partnering with parents, community and parish, provides opportunities for students to embrace a rigorous program of studies and practice, and to model strong faith through community outreach and activism. We realize that by embracing individual differences and creating a sense of mutual respect, compassion and understanding, we will instill in all students an enthusiasm for learning and a realization of their Christ-guided place in the world.



A Legacy of Excellence and Foundation for the Future.



EYE CARE OF MAINE

"Your Sight is Our Vision"

- Comprehensive Eye Exams
- Eyewear Center / Contact Lenses
- State of the Art Cataract Surgery
- Retinal Diseases and Glaucoma
- LASIK Refractive Surgery
- Laser Surgery
- Oculoplastic Diseases
- Botox, Juvederm and Latisse

• Ambulatory Surgery Center

www.Maine2020.com



Steve R. Witkin, M.D.



Peter C. Kohler, M.D.



James R. Putnam, M.D.



Marc B. Daniels, M.D.



Helen Bell-Necevski, O.D.



Lorie Lepley Parks, O.D.



Michael C. Parks, O.D.



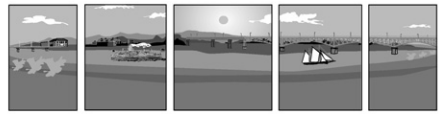
Adam B. Pulia, O.D.

325A Kennedy Memorial Drive
Waterville, Maine 04901

873-2731
(800) 660-3403

Please visit our website

www.sumbelnews.com



RIVERFRONT BARBEQUE & GRILLE

WORLD CLASS BARBEQUE

SEAFOOD, PASTA, & VEGETARIAN ENTREES

207.622.8899

300 WATER STREET, AUGUSTA, MAINE

WWW.RIVERFRONTBBQ.COM

FULL SERVICE DINING * CATERING * BULK TAKE OUT



The Gin Mill

Augusta, Maine

Augusta's finest upscale lounge featuring
fine wine, martinis, and over 100 brands
of beer from Germany to Japan

Thursday thru Saturday 3:00pm until Midnight,
Above the Riverfront Barbeque & Grille
at 300 Water Street
207.620.9200

Lakepoint REAL ESTATE

(207) 495-3700

221 Main Street, Belgrade Lakes

"Put The Team to Work For You"

GAIL RIZZO 207-242-8119

gail@gailrizzo.com

PAT DONAHUE 207-730-2331

pldcamp@msn.com



GREAT POND Stand-alone
3BR/1BA condo at water's edge
w/private dock, covered porch,
custom kitchen, open kitchen/din-
ing/living design, wood stove,
shed & western exposure for
breathtaking sunsets!
\$439,000 MLS 1417658



GREAT POND Classic, 2BR/2BA
Maine log camp steps to the
water & completely renovated!
This stand-alone condo has a pri-
vate dock, mooring, heat,
screened porch, level lot & is
close to village by boat or car!
\$259,000 MLS 1412581

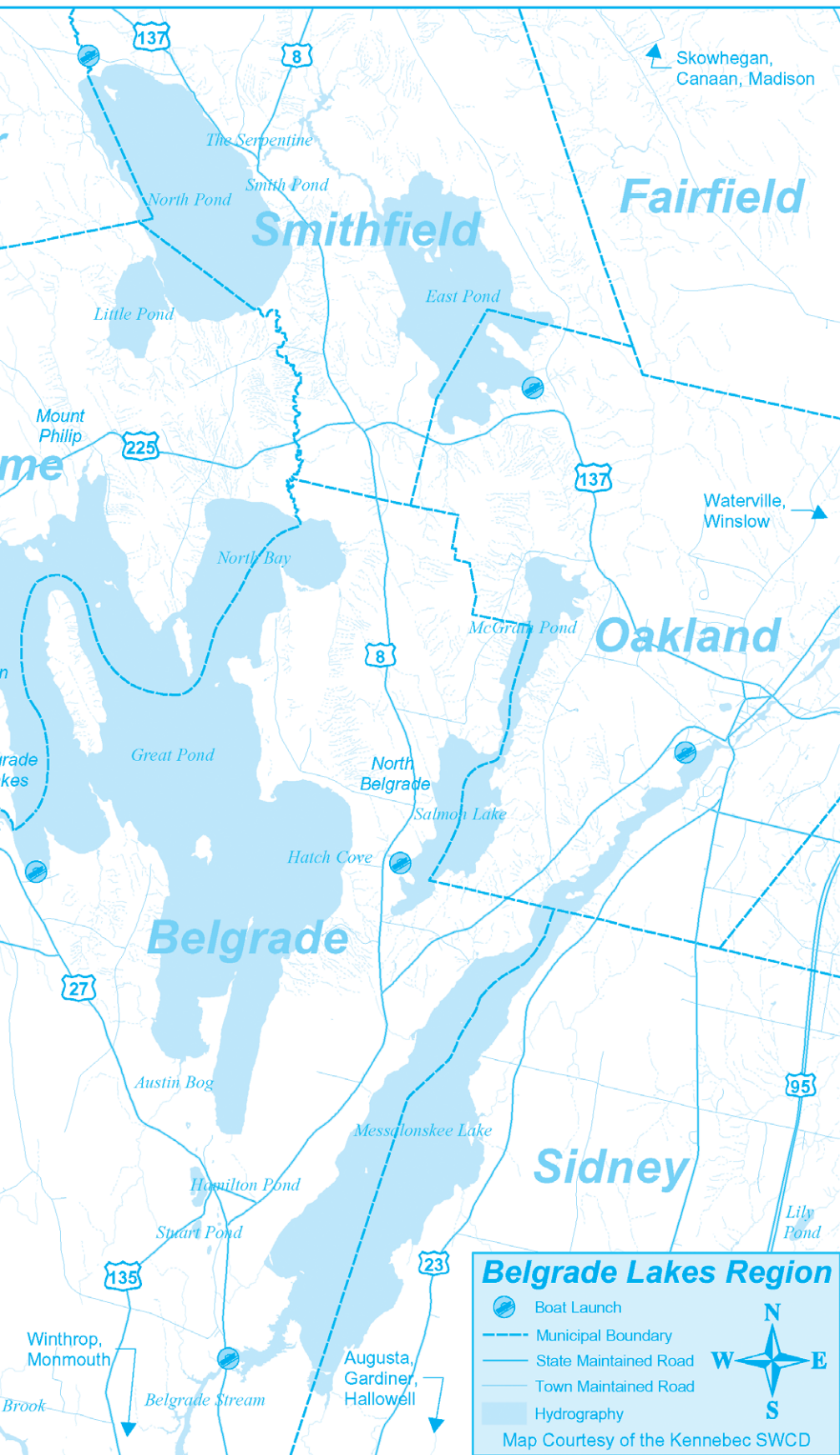


FLYING POND Rare lakefront
building lot w/247 +/- of private
waterfrontage with dock, level,
sandy swim area & big views!
1.75 +/- acre lot is adjacent to
large parcel of undeveloped land
at the North end of LAKE.
\$135,000 MLS 1417738



ROME Cozy 2BR/1BA home a
short distance to Belgrade
village offers one level living,
many outbuildings, patio, 2.44 +/-
acres of lovely grounds & a
1BR/1BA guest house for your
visitors or rental income!
\$204,500 MLS 1373139

www.belgradelakepoint.com



Visit the Businesses on Marina Drive

GREAT POND MARINA



Paddle Board

Sales &
Rentals

O'BRIEN WATERSPORTS FACTORY DIRECT PRICING

25 Marina Drive | Belgrade Lakes, ME
(207) 495-2213 | www.greatpondmarina.com

Lakeside Cottage Rentals



Exclusive Lakeside
Rentals in the
Belgrade Lakes Region

Located at 25 Marina Dr.

(207) 495-4046

www.LCRentals.com

Waterfront Property Owners

We offer full service rental management services.
Please call if you are interested in having us manage your home.

sadiesboathouse@hotmail.com

• 207-495-4045 •

Like us on Facebook!

Open Friday & Saturday

from 5 PM – 9 PM



G & L CONTRACTING

- New Construction
- Additions
- Dock Installations
- Jacking

207-495-9009

www.gandlcontractingmaine.com



Lift Services
Serving: Great and Long Pond,
Messalonskee, and Cobbossee

~Quality Work at Affordable Prices~

Landscape Service

Landscape Installation
Garden Design
Walkways & Patios
Retaining Walls
ICPI Certified
Large Trees

Free Estimates



Tree Service

Licensed Arborist
Tree Removal
Climbing Service
Right of Way Clearing
Brush Chipping
Fully Insured

Free Estimates



— Upcoming —

JUNE

• The Washburn-Norlands Living History Center in Livermore is hosting its 7th Civil War Living History Weekend on June 22 and 23, featuring a wide variety of demonstrations, exhibits and activities, tours, history displays, a real wedding, food and more. 897-4366

• The Greater Gardiner River Festival with arts and entertainment, games, giveaways and local food at Waterfront Park and live music and entertainment, a craft fair and activities for all ages on Gardiner Main Street will be held on Saturday, June 22.

• The Theater at Monmouth starts its summer season with "Murder for Two" on June 22 through August 16. A hilarious musical murder mystery; everyone is a suspect. 933-9999

• The 49th Annual Maine Lakes Conference, focusing on the Forest-Freshwater Connection, will be held on Saturday, June 22 at the University of Maine at Farmington. 495-2301

• Camp Mechuwana's Third Annual Golf Tournament will be held on Saturday, June 22 at Springbrook Golf Course in Leeds, rain or shine, with a 1 pm shotgun start. Register by 6/22. mechuwana@fairpoint.net

• The Inaugural Concert of the Reprise Choral Ensemble will take place on Sunday, June 23 at 4 pm at the Green Street United Methodist Church in Augusta. Adults \$12, students \$8 suggested donation to benefit the Maine Arts Academy.

• Join Thomas College on Monday, June 24 for the 6th Annual Terrier Tee-Off at the Waterville Country Club. Tournament format is a four-person scramble; 11 am registration, 12 noon shotgun start. All proceeds support athletic program. 859-1206

• A film and discussion on Journeying to the Coyote Center will be presented on Monday, June 24 at 6:30 pm at Lithgow Library, 45 Winthrop Street, Augusta. 626-2415

• Discover Your World: An Interactive Workshop for Caregivers, Educators and Librarians will be held on Wednesday, June 26, 5-7 pm in the Community Meeting Room, Lithgow Public Library, Augusta. 626-2415

• The Friends of the Maine State Museum will hold a Summer Fundraiser to support museum exhibits and programs on Thursday, June 27 at the Viles House in Augusta, with music by Birdie Newman Katz, food, desserts, fine wines and a silent auction, 5:30-7:30 pm, \$60 per person. 287-2304

• On June 28 the first free Waterville Rocks concert of the season featuring The Mallett Brothers Band and Hymn for Her will perform in Castonguay Square, 5:30-8:30 pm. 509-3365

• Kennebec River Day in Mill Park, an event for all ages with games and activities for children, craft vendors, food trucks and live entertainment, will be celebrated on Saturday, June 29, 11 am-4 pm. 623-4559

Kingfield POPS with the Bangor Symphony Orchestra will take place on Saturday, June 29 under the stars in Kingfield. Tickets at www.kingfieldpops.com

• The 22nd Annual William Philbrick Scholarship Golf Tournament to benefit Rotary charitable causes will take place on Sunday, June 30 at the Lakewood Golf Club with a scramble best ball format Register 12:15-12:45; 1:00 pm start. \$75 per player includes chicken awards dinner. Carts included in registra-

tion fee. 474-4790 or 474-5574.

JULY

• On Thursday, July 4, the Friends of the Belgrade Public Library Book and Bake Sale will be held at the Center for all Seasons in Belgrade Lakes from 9 am-2 pm. 495-3508

• Friends of the Cobbossee Watershed will hold the Annual Friends on the 4th 5K - run, jog or walk, starting at Norcross Point in Winthrop at 8 am. 621-4100

• The Kennebec Leadership Institute Golf Tournament to help provide scholarships to the institute will be held on Monday, July 8 at the August Country Club. Entry fee is \$130 per golfer; registration 9 am; shotgun start 10 am. www.Kennebecvalleychamber.com

• On Wednesday, July 10, "Women Caring for the Land," free women landowners meeting to discuss soil health and conservation planning will meet at Viles Arboretum in Augusta. Any female landowner welcome, 8:30 am-3 pm, free lunch and field tour included. 480-4287

• The McGrath Pond/Salmon Lake Association annual meeting will be Thursday, July 11, 6-8 pm at the North Belgrade Community Center. mpsassociation@gmail.com

• The 22nd Annual Maine International Film Festival with 100 films and 50 filmmakers will run from July 12 through July 21 in Waterville. 861-8138

• The 40th Annual New England Music Camp Pops Concert will be Saturday, July 20, 7:30 pm at Bowl in the Pines, Snow Pond Center of the Arts and the New England Music Camp; ticketed event. 844-476-6976

• The Annual 5K Road Race to benefit the Belgrade Public Library will be Saturday, July 20 at the Belgrade Central School at 7:30 am. 495-3508

AUGUST

• Moonlight Madness will be held on Thursday, August 1 starting at 5:30 pm in Downtown Skowhegan featuring live music, vendors, bed races and more. Water and Commercial Streets will be closed to traffic. 474-3621

• The Taste of Waterville presented by the Mid-Maine Chamber of Commerce will be held Wednesday, August 7, featuring children's activities on the Concourse, food, music, sales and more food along Main Street in downtown Waterville. 873-3315

• On Saturday, August 3, the Belgrade Fire & Rescue Association Bean Hole Supper will be at the Center for all Seasons, Belgrade Lakes, 5-7 pm.

• A Live and Silent Auction with auctioneer Steve Smith will be held on Sunday, August 18 at the Center for All Seasons at 7 pm to benefit the Belgrade Public Library. 495-2101

• The 53rd Blistered Fingers Family Bluegrass Music Festival, featuring 10 live bands, will take place August 22-25 at the Litchfield Fairgrounds. 873-6539

• The Man in Black, A Tribute to Johnny Cash, is scheduled for Sunday, August 25 at 4 pm at Bowl in the Pines, Snow Pond Center for the Arts, Sidney. Ticketed event; 844-476-6976

SEPTEMBER

• On Monday, September 2 Run for the Horses 5K and 1K for kids to benefit Double B Equine Horse Rescue will be held near Lake Wesserunsett in Madison. Start time 10 am, registration fee \$15, \$5 for 10 and under. Karenrapallo@gmail.com

Blistered Fingers Festival Features Family



The 52nd Blistered Fingers Family Bluegrass Festival will take place at the Litchfield Fairgrounds, June 20 through 23 with eleven great bands, a large tented spectator area, food, music-oriented concessions, a spacious camping area with super clean restroom facilities, and a Kids Academy which encourages future bluegrass performers.

The line-up of bands from around the country, includes:

- The Gibson Brothers - NY, Saturday
- The Little Roy & Lizzy Show - GA, Saturday
- Danny Paisley & Southern Grass - PA, Friday
- Dave Adkins Band - KY, Friday
- Zink & Company - MA, Friday, Saturday
- The Kevin Prater Band - KY, Thursday
- The Baker Family - MO, Thursday, Friday
- Dreamcatcher - TN, Thursday
- Third Harmony - NB, Friday, Saturday
- Robinson's Bluegrass Gospel - Sunday
- Blistered Fingers - ME, Saturday

Sandy Cormier, a member of the host band, Blistered Fingers, and the enthusiastic organizer of the Blistered Fingers festivals, will be the emcee for the June event.

A special feature on Saturday is the free Kids Academy for ages 5-18 that immerses young musicians in a rewarding practice-and-play experience.

For campers who want to get in extra relaxation and pickin' time, the gate will open at 8 am on Sunday June 16 for Early Bird camping. The stage shows will be Thursday through Saturday with the gospel sing along on Sunday morning at 10 am.

In addition to day tickets, weekend tickets and camping rates (and pet rates) are available. For more information visit www.blisteredfingers.com or call 873-6539.





– Conservation Too –

Invasives – the Plant Variety

By Dale Finseth

I missed week one of 'Summertime in the Belgrades'. So, I'll launch right into the first topic for the season – Invasive Plants. While plant life seems to be getting a later start this season, now is the time to begin identifying any "invasives" and try and mitigate their spread.

An invasive plant is defined as a plant that 1] is not native to a particular ecosystem/area, 2] causes economic or environmental harm or may cause harm to human health and 3] which can establish and spread in natural areas.. While about 1/3 of Maine's plant species are native, only a small fraction of those are considered "invasive". These have the potential to cause great harm to our landscape. Check the Maine Natural Areas Program list of fact sheets to determine if a particular species is considered invasive in Maine. The MNAP is the 'go to' State agency in Maine for answering questions and getting information about invasive plants. http://www.maine.gov/dacf/mnap/features/invasive_plants/inv sheets.htm There is also a generic State website for all types of invasives i.e. animals, forest pests, aquatic plants, and terrestrial plants http://www.maine.gov/portal/about_me/invasives.html These websites have 'gallery views' available which provide good photos to use in identification.

There is a new, hot off the press Maine Invasive Plant Field Guide. It is a handy 3.75 x 8" field guide mounted on rings so that it is easy to flip through. The introductory price is only \$18 until the end of June. After that the price will increase. To order one with credit card (Master Card or Visa), please phone 207-287-2801. Or call 207-287-8044 or email maine.nap@maine.gov with questions.

Here in the local area we need to come to grips with the invasive plants that are doing damage to our natural areas and native plants. Japanese Barberry [see picture], Multiflora



Japanese Barberry



Multiflora rose

Rose and Autumn Olive seem particularly robust. Asiatic Bittersweet vine and Common Buckthorn are also appearing more frequently. Japanese Knotweed often gets established at a construction site or as we do landscaping. At this time of year Garlic Mustard appears at the wood's edge. Your back yards are feeling the pressure of these invasive plants. There is a list of these invasive plants with names and pictures. Check the Maine Lakes Center or Cooperative Extension, or our office and pick up some of the handouts.

The first line of defense is to accurately identify the plant. Usually trying to control their spread is the only choice. They will eventually appear. That's where the Field Guide comes in handy.

Recognize that there is a problem. That occasional plant out back with interesting foliage and a pretty flower might become a thick bank of vegetation if you leave it be. Look along the edge of the woods on your property and note the occasional spring clusters of white flowers

which indicate Multi Flora Rose. Next year that small patch of white flowers will be joined by additional mounds of nasty thorn covered plants. At that point removal is much more difficult. That area can become a breeding ground of fruit and seeds which get spread to neighboring properties.

Our natural landscape is part of what Maine is all about. Its future depends on the choices we make. When buying plants or moving them from place to place, consider whether the plants are likely to spread. Plants advertised as fast growing, prolific, and soil tolerant are often the ones that become invasive. Maine just won't be Maine if the plants dominating our landscape are all from away..

- When buying plants for your yard. Select native plants.
- Replace invasive plants in your garden with non-invasive alternatives.
- DO NOT attack the problem with indiscriminant herbicide use. They may have a place in your management plan but they are NOT a magic bullet. Be careful with their use.
- Check out the Maine Natural Areas IMapInvasive program and become a citizen scientist.

Managing invasive plants in the landscape is part of our effort to protect our Maine landscape. While we may talk about managing our tourists [the other "invasives"], those people usually leave in the fall. We frequently benefit from their visit. Not so with the invasive plants. :-{)

For information about any of our conservation projects please contact Dale Finseth at 622-7847, x 3 or check our website at www.kcswood.org



MICHAEL BREAU Creative solutions for all your Mac needs

Macintosh and iOS support, based in Western Maine, working onsite throughout Maine



If you have Macs, iOS devices, software or network problems, websites you'd like built, or any ideas you would like to implement using Macintosh computers, give me a call and we can discuss if I can help...

207-578-0226 • www.michaelbreault.net

Belgrade Regional Health Center



4 Clement Way, Belgrade • 207.495.3323 • BelgradeCHC.org
All insurances accepted • Sliding fee available



F. A. Rizzo Appraisal Company Frank Rizzo

Consultant/Appraiser

Real Estate Appraisal & Planning

Certified Residential cr709

tel. (207) 495-3365

cell (207) 458-4916

farizzo@roadrunner.com



Since 1992

ALDEN CAMPS

Est. 1911



- Lobster Bakes on Friday nights by Reservation
- Lakeside Cottages • Boats & Motors
- Full American Plan
- Dining on the Porch by reservation Saturday through Wednesday

3 Alden Camps Cove
Oakland, Me 04963
(207-465-7703)

E-mail: info@aldencamps.com • Website: www.aldencamps.com



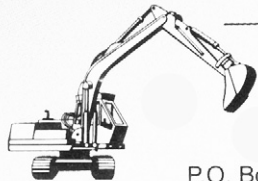
BOOKS, PUZZLES, TOYS, GAMES

A store for children of all ages,
the young and the young at heart.

Open Monday 12 to 5 • Tues. - Sat. 9 to 5
52 Main St. Waterville 872-4543

DAVID STEVENS

Excavation & Septic Systems



LOAM GRAVEL SAND

465-3815

Cell: 314-0314

P.O. Box 146 • Belgrade, Maine 04917

CASTLE ISLAND CAMPS
Bait, Tackle, Gas,
Boat, Kayak, and
Paddleboard
Rentals



Boats, Daily or
Weekly

495-3312
Rentals for
Long Pond Only

JETSKIMAINE.COM

207.313.6248

Hourly Rentals
RESERVE ONLINE!

Call 495-3777
to advertise in
Summertime in the
Belgrades

David J. Auclair
www.auclaircycle.com

**AUCLAIR
CYCLE & SKI**

64-66 BANGOR ST. AUGUSTA, ME 04330
623-4351 / 800-734-7171 • Fast Professional Service
Bicycles • Skateboards • Roof Racks • Rentals

THREE LAKE STORAGE



169 Village Rd.
Smithfield, Maine
TEL: (207) 465-5501
threelakesstorage@yahoo.com

— Accommodations —

Alden Camps, rustic lakeside cottages on East Pond, since 1911, American Plan meals, boat and motor rentals, dining and lobster bake open to public by reservation, 3 Alden Camps Cove, Oakland, www.aldencamps.com, 465-7703.

Castle Island Camps, cottages on the water on Long Pond, American Plan meals, boat and kayak rentals, Castle Island Road, Belgrade Lakes, www.castleislandcamps.com, 495-3312.

Taconnet on Great Pond, rustic island, comfortable lakeside cottages, meal plan, Belgrade Lakes, 397-2361

Belgrade Vacation Rentals, lakeside camp and cottage rentals throughout the area, long and short stays, many size accommodations and rates, www.belgradevacationrentals.com, 1-800-760-1503.

Lakeside Cottage Rentals, featuring over 70 private homes, 24/7 customer friendly service, 25 Marina Drive, Belgrade Lakes, www.lcrentals.com, 592-5577, 495-4046.

Notebook

Most Endangered Places - Call for Nominations

• Concerned about a threatened historic place in your community? Submit a nomination today. Each year, Maine Preservation publishes a list of the Most Endangered Historic Places in Maine, to focus statewide media attention on places in peril and to boost local efforts to protect them. 847-3577

McGrath/Salmon Lights on the Lake

• From July 26 through August 2, McGrath Pond and Salmon Lake will be lighting up the lake to celebrate the beautiful lake community. Small twinkling lights (nothing flashing or super bright) will be displayed on boats, shoreline or camps until 10 pm at night. www.mcgrathpond-salmonlake.org

Sharing the Road with Buggies

• With the growth of Amish communities across Maine, many motorists are seeing more horse-drawn buggies. Sharing the road with horses requires enhanced courtesy, focus and safety awareness. Tips for motorists include: slow down and pay attention; don't honk your horn; don't rev your engine; dim headlights at night. Motorists are required by law to stop and remain stationary if anyone handling an animal signals that the animal is frightened. When passing, leave plenty of room - at least 3 feet of space; slow down when driving over a blind hill or around a sharp turn; and remember buggies can travel up to 20 mph so give yourself plenty of room to return safely to your lane. Also learn to recognize the reflector and lighting systems used on Amish buggies. mainedot.gov

On Golden Pond Anniversary Production

• It's a unique production. Marking its 41st anniversary, the play that is based on Great Pond in Belgrade is being presented at the Winnepausaukee Playhouse in Meredith, New Hampshire with playwright Ernest Thompson performing the lead role of Norman. The production is scheduled for June 12 through 22. For more information or tickets call 603 279-0333.

Annual Conference: Climate Change on Lakes

• "The Influences of Climate Change on Lakes:

What's Coming, and What's Already Happening" is the theme of the Annual Lake Monitoring Conference taking place on Saturday, July 27. Free for certified Lake Stewards of Maine lake monitors, \$35 for others, \$20 for students. Lunch is included; bring your own re-usable water bottle. 783-7733

Disaster Plan For Pets

• Are you really prepared for a disaster? The Humane Society of the United States makes the following suggestions:

- Make an evacuation kit that includes items for your pet.
- Make a plan for evacuation to a pet-friendly location.
- Practice evacuating with your pet.
- Always have visible ID on your pet.
- Take your pet with you when you evacuate.

For more details visit humanesociety.org/prepare

Genealogy Fair at Maine State Library

• Join the Maine Genealogy Society and other organizations for a day of genealogical fun on Saturday, June 29, 9 am to 2 pm. Also check out classes free and open to the public, club meetings and other genealogical resources. 287-5613

Climate Communications Workshop

• On Wednesday, June 26, 1-5 pm, at the Maine Lakes Resource Center a half-day training, hosted by the Maine Lakes Society and the 7 Lakes Alliance and presented by Tyler Kidder of the Onion Foundation in partnership with the Maine Climate Table will focus on how to communicate more effectively with Mainers on the topic of climate change. The training workshop includes information on modern brain science as well as findings on how to change opinion and move audiences to action. All are welcome, no prior experience with communications necessary. 495-6039

Farm-to-Table Dinner

• On Sunday, July 14 at 6 pm, Winterberry Farm in Belgrade will host a "dine at the source" meal. Start the evening with a leisurely stroll around the farm's numerous organic flower and vegetable gardens, enjoy appetizers and listen to local soft guitar music. Dinner, created from delicious food grown on the farm, is served at 7pm on one long table. \$70 per person. Seating is limited. 649-3331



Dining

Augusta
• **Riverfront Barbeque & Grille and Gin Mill Lounge**, world class barbeque, seafood, pasta and vegetarian entrees, full service dining, catering, bulk take out, 300 Water Street, Augusta, www.riverfrontbbq.com, 622-8899

Belgrade
• **Sadie's Boathouse Restaurant** at Great Pond Marine, hearty contemporary American fare, 25 Marina Drive, Belgrade Lakes, 495-4045, 242-1273

• **Spiro & Company**, gourmet Greek food, Main Street, Belgrade Lakes Village, www.spiroandcompany.com, 441-2103

• **The Village Inn and Tavern**, 157 Main Street, Route 27, Belgrade Lakes Village, 495-3553, www.villageandtavern.com

• **Winterberry Farm Café**, homemade treats, pie, cookies, granola bars, grilled organic cheese sandwiches, veggies, drinks, 538 Augusta Rd, (Route 27), Belgrade, 649-3331

Oakland
• **Alden Camps**, lunch or dinner by reservation Saturday-Wednesday space permitting, lobster bakes on Friday night by reservation, 3 Alden Camps Cove, Oakland, www.aldencamps.com, 465-7703

Oakland - Wines & Spirits
• **Tree Spirits**, tasting room for award winning wines and spirits made from local apples, pears and maple syrup, tours available, 152 Fairfield Street, Oakland, www.treespiritsofmaine.com, 861-2723 or 465-3007



WINTERBERRYFARMSTAND.COM

Route 27, Belgrade
207.649.3331

KIDS FARM CAMP

Offering two one week sessions - 8:30-4pm daily
June 24 - 28 & July 22 - 26
Ages 5-11 \$225.00

Belgrade's working family farm

FARMSTORE & CAFÉ
Open 7 days a week, 9am - 6pm
Featuring all-organic products grown and produced here on the farm.
3 miles south of Belgrade Lakes Village on route 27.



Specializing In

CAMP JACKING AND LEVELING

John Webster
32 Webster Way
Belgrade, ME 04917

Sill Replacement
Retaining Walls

(207) 495-2965
35+ Years Experience

Belgrade Historical Society Programs

• The Belgrade Historical Society presents the summer programs at:
Thursday, June 20 - "Belgrade Lakes Village, Mill Town to Tourist Destination," a multi-media history of Belgrade Lakes Village by Eric Hooglund.
Thursday, July 18 - "Recovering the Recent Past," letters written by Messalonskee High School students during the 1990s, by former Messalonskee High School teacher, David Leigh.
Thursday, August 22 - "Inventing Vacationland, How Maine Became a Number One Tourist Destination," by Scott Andrews, University of Southern Maine Senior College.
The programs will be presented at the Maine Lakes Resource Center in Belgrade Lakes at 7 pm. Starting June 18, the Local History Room at the Center for All Seasons will be open Tuesdays, Wednesdays and Thursdays, 10 am-2 pm and Walking Tours of the Village will be on Fridays at 11 am starting June 21. 548-3569

Skowhegan Craft Brew Festival Features

• Celebrate the end of summer! A Craft Brew Festival is coming to Skowhegan on Saturday, August 31 with Maine-crafted brews, farm-to-

To advertise call 495-3777
or send email
ebelnews@earthlink.net, or
mo.breault@gmail.com.

table fare and live music in the streets downtown. There will be tours of the unique mill Maine Grains, exploration of the riverfront, and the opportunity to follow Skowhegan's portion of the Langlais Art Trail of wooden sculptures. SkowheganCraftBrewFest.com

Waterville


• Waterville Rocks, free and family-friendly outdoor concerts will feature the following regional acts this summer: June 28 - The Mallett Brothers Band and Hymn for Her; July 5 - first all-female concert including Kat Wright and Katie Matzell; July 26 - Tinsley Ellis and Cold Engines; August 2 - Enter the Haggis and Tricky Britches. All concerts are Friday evenings, 5:30-8:30 pm in Castonguay Square and will have available a beer garden for over 21 and an ice cream wagon. In the event of rain, concerts will be inside the Waterville Opera House.

Oxbow Nature Trail

By Gregor Smith





Created more than four decades ago, the Oxbow is one of Waterville's oldest trails. The easy, 3/4-mile loop sits on an undeveloped, 19-acre parcel at a U-shaped bend, or oxbow, on the Messalonskee Stream. The land is owned mainly by the Lutheran Church of the Resurrection, with the lowlands belonging to the Maine Children's Home for Little Wanderers, whose campus is across the stream on Silver Street. The trailhead is just north of the church's parking lot on Cool Street.



Looking for a change?
Buying or selling....
Let me be your
lakefront specialist.

Amy Bernatchez
Associate Broker
143 Silver Street, Waterville, ME 04901
Phone: 207-660-4010 (o) 207-314-2353 (c)
email: abernatchez@cbplourde.com



**COLDWELL
BANKER**

**PLOURDE
REAL ESTATE**

Bittersweet, a tangled, woody vine, grows up next to and around a pine tree. An invasive plant, KMTrails volunteers were cutting and spraying these vines.



-Business Directory-

ACCOMMODATIONS

See page 14

ANTIQUES

Hathaway Mill Antiques, Multi-Dealer Emporium, 10 Water Street, Waterville, 877-0250, www.athawaymillantiques.com

APPLE ORCHARDS

The Apple Farm, 104 Back Road, Fairfield, 453-7656, www.applefarm.us

ART MUSEUM

Colby College Museum of Art, 5600 Mayflower Hill, Waterville, 859-5600, www.colby.edu/museum/

AUTOMOBILE STORAGE

Belgrade Lakes Marine and Storage, Inc, 366 Augusta Road, Belgrade, 495-2378, www.belgradelakesmarine.com

BANKING

Skowhegan Savings Bank, 450 Civic Center Drive, Route 27, Augusta, 1-800-303-9511, 623-2300, www.skowsavings.com

BEVERAGES

Tree Spirits, 152 Fairfield Street, Oakland, 861-2723, www.treespiritsofmaine.com

BICYCLES

Auclair Cycle & Ski, 64 Bangor Street, Augusta, 623-4351, www.auclaircycle.com

BOAT COVERS

Covers It All Upholstery, 1042 Kennedy Memorial Dr, Oakland, 465-7847, www.watervilleupholstery.com

BOAT LIFTS

Hammond Lumber Company, at 21 locations including Auburn, Bangor, Belgrade, Boothbay Harbor, Brunswick, Damariscotta, Fairfield, Farmington, Greenville, Pemiquid, Portland, Skowhegan, Wilton, 1-866-HAMMOND, www.hammondlumber.com

BOAT MOORINGS

Great Pond Marina, 25 Marina Drive, Route 27, Belgrade Lakes, 495-2213, www.greatpondmarina.com

BOAT RENTALS

Castle Island Camps, Long Pond, 441 Castle Island Road, Belgrade Lakes, 495-3312, www.castleislandcamps.com
Great Pond Marina, 25 Marina Drive, Route 27, Belgrade Lakes, 495-2213, www.greatpondmarina.com
Maine Boat Rental, statewide delivery, 313-6248, maineboatrental.com

BOAT SALES AND SERVICES

Mid-Maine Marine and RV, 885 Kennedy Memorial Drive, Oakland, 465-2146, www.midmainemarine.com

BOAT STORAGE

Belgrade Boat Storage, 31 Pinkham's Cove Road, Belgrade, 495-3421, 314-3287, www.belgradeboatstorage.com

Belgrade Lakes Marine and Storage, Inc, 366 Augusta Road, Belgrade, 495-2378, www.belgradelakesmarine.com

Great Pond Marina, 25 Marina Drive, Route 27, Belgrade Lakes, 495-2213, www.greatpondmarina.com

Mid-Maine Marine, 885 Kennedy Memorial Drive, Oakland, 465-2146, www.midmainemarine.com

BOOKS

Children's Book Cellar, 52 Main Street, Waterville, 872-4543, childrensbookcellar.com

BUILDERS

Craig's Carpentry/North Bay Estates, Route 8, North Belgrade, Craig Alexander, 649-3749
G&L Contracting, 116 Lakeshore Drive, Belgrade Lakes, 215-7951, 495-2325, 233-7408, gandlcontractingmaine.com

LakeHouse Design, Build, Renovations, 17 Birchwood Road, Augusta, 242-3663, www.lakehousedesignbuild.com

BUILDING MATERIALS

Hammond Lumber Company, at 21 locations including Auburn, Bangor, Belgrade, Boothbay Harbor, Brunswick, Damariscotta, Fairfield, Farmington, Greenville, Pemiquid, Portland, Skowhegan, Wilton, 1-866-HAMMOND, www.hammondlumber.com

CAMP JACKING AND LEVELING

John Webster, 32 Webster Way, Belgrade, 495-2965

COMPUTER CONSULTANTS

Macintosh Solutions, Michael Breault, 24 Welch Road, Wilton, 645-5083, cell 578-0226, www.michaelbreault.net

CONSTRUCTION

Labbe Construction, Smithfield, 464-5500

DINING

See Directory on page 15

DOCKS

G&L Contracting, 116 Lakeshore Drive, Belgrade Lakes, 495-2325, 215-7951, 233-7408, gandlcontractingmaine.com
Hammond Lumber Company, at 21 locations including Auburn, Bangor, Belgrade, Boothbay

Harbor, Brunswick, Damariscotta, Fairfield, Farmington, Greenville, Pemiquid, Portland, Skowhegan, Wilton, 1-866-HAMMOND, www.hammondlumber.com

ELDER CARE

Assistance Plus, 1-800-0070, ext. 408, www.assistanceplus.com

Maine-ly Elder Care, 28 Center Street, Oakland, 465-3249, www.maine-lyeldercare.com

ENGINEERING

Thayer Engineering, septic design, storm water mitigation, permitting, 17 Hasson Street, Farmingdale, 582-7762, www.thayereng.com

EXCAVATING

Belgrade Boat Storage, 31 Pinkham's Cove Road, Belgrade, 495-3421, 314-3287, belgradeboatrentals.com
David Stevens, P.O. Box 146, Belgrade, 465-3815, cell 314-0314

EYE CARE

Eye Care of Maine, 325 E. Kennedy Memorial Drive, Waterville, 873-2731, 1-800-660-3403, www.Maine2020.com

FARMSTANDS

Winterberry Farm, 538 Augusta Road, Route 27, Belgrade, 495-2593, 649-3331, www.winterberryfarmstand.com

FINANCIAL PLANNING

Golden Pond Wealth Management, 129 Silver Street, Waterville, 873-2200, www.goldenpondwealth.com

FIREWOOD

J & M Logging, Inc. 853 Civic Center Drive, Augusta, 622-6353, www.jmlogginginc.com

FLOORING

Hammond Lumber Company, at 21 locations including Auburn, Bangor, Belgrade, Boothbay Harbor, Brunswick, Damariscotta, Fairfield, Farmington, Greenville, Pemiquid, Portland, Skowhegan, Wilton, 1-866-HAMMOND, www.hammondlumber.com

GENERATORS

Generators of Maine, 262 Augusta Road, Belgrade, 495-2285, www.generatorsofmaine.com

HEALTH CENTERS

Belgrade Regional Health Center, 4 Clement Way, Belgrade Lakes, 495-3323, belgradechc.org

HOME CARE

Assistance Plus, 1-800-781-0070 ext. 408, www.assistanceplus.com
Maine-ly Elder Care, 28 Center Street, Oakland, 465-3249, www.maine-lyeldercare.com

**JET SKIS**

Jet Ski Maine, call or reserve online,
313-6248, jetskimaine.com

JEWELRY

L.Tardif Jeweler, 62 Main St., Waterville,
872-7542, ltardifjewelers.com

KITCHENS

Hammond Lumber Company, at 21 locations including Auburn, Bangor, Belgrade, Boothbay Harbor, Brunswick, Damariscotta, Fairfield, Farmington, Greenville, Pemiquid, Portland, Skowhegan, Wilton, 1-866-HAMMOND, www.hammondlumber.com

LAKE ASSOCIATIONS

Belgrade Lakes Association (BLA), Long Pond and Great Pond, PO Box 551, 137 Main Street, Belgrade Lakes, 512-5150, belgradelakesassociation.org

LANDSCAPING

G&L Contracting, Belgrade Lakes, 215-7951, 495-2325, 233-7408, gandlcontractingmaine.com
Lynch Landscaping, Skowhegan, 474-2420, lynchlandscaping.com

MOVIE THEATERS

Railroad Square Cinema, call for titles and times, 17 Railroad Square, Waterville, 873-6526, www.railroadsquarecinema.com

MUSEUMS

Colby College Museum of Art, 5600 Mayflower Hill, Waterville, 859-5600, www.colby.edu/museum/

PAINTING

Innovative Painting LLC., Epoxy Sales & Services, 462-4822, jonesbrian67@yahoo.com

PHYSICAL THERAPY

Dockside Physical Therapy, 47 Main Street, Belgrade Lakes, 495-3195, 512-2544, Fax 512-2545

PIANO ENJOYMENT

Diane Gorman, 191B Bartlett Road, Belgrade, 495-3222

REAL ESTATE DEVELOPMENTS

North Bay Estates, Belgrade, 649-3749, crgsnbe@yahoo.com

REAL ESTATE

Amy Bernatchez, Coldwell Banker Plourde Real Estate, 143 Silver Street, Waterville, 314-2353, abernatchez@cbplourde.com

Day's Real Estate, 262 Augusta Road, Route 27, Belgrade Lakes, 495-3111, www.daysrealestate.com

Hoang Realty, 31 Western Ave., Augusta,



Hank Hutchins with nice Snow Pond smallie.

trails at Day's Store or from the 7-LA at the Maine Lakes Resource Center Building (MLRC). Get out and explore! Sign your kids up to learn to sail through the Great Pond Yacht Club (<https://greatpondyachtclub.com/junior-sailing-program/>). And make sure you take a kid along on your next outdoor adventure.

The 7-LA is hosting numerous outreach events this summer, including a guided full moon hike on French Mountain on June 17th at 7 PM (bring a headlamp or flashlight). On July 3rd and 9th, at 2 PM, staff from Chewonki will be doing presentations at the MLRC on "Predators" and "Owls of Maine," respectively. Keep an eye on the sign in front of the MLRC and check the 7-LA web site and Facebook page for further updates.

623-0623, www.hoangrealty.com

Lakepoint Real Estate, 221 Main Street, Belgrade Lakes, 495-3700, www.belgradelakepoint.com

Sprague & Curtis Real Estate, 75 Western Avenue, Augusta, 623-1123, www.spragueandcurtis.com

REAL ESTATE APPRAISALS AND PLANNING

F.A. Rizzo Appraisal Company, real estate appraisal and planning for real estate, 495-3365, 458-4916, farizzo@roadrunner.com

RECREATIONAL VEHICLE AND TRAILER STORAGE

Belgrade Lakes Marine and Storage, Inc., 366 Augusta Road, Belgrade, 495-2378, www.belgradelakesmarine.com

LODGING /RESERVATIONS

See page 14

RESTAURANTS

See Dining Directory on page 15

RETIREMENT COMMUNITIES

Granite Hill Estates, 60 Balsam Drive, Hallowell, 626-7786, 1-888-321-1119,

Take it Outside continued from page 5....

She told me her daughter was "so excited she has been talking about this for weeks," and had "learned so much about fish" during the semester.

The weather has been a bit cool, windy, and damp but the fishing has continued to be productive. Mike Guarino, who used to write this column, has been doing very well on Messalonskee Lake, where he recently guided Hal and Hank Hutchins, up from Massachusetts to do a little fishing.

On Memorial Day my older daughter and I hiked French Mountain, where we met Christina Gavoni from Industry, who was hiking with her kids Abigail and Michael and the family dog, Lexie. The kids told us it was their "first hike." French Mountain is the perfect spot to take young kids on their first hike.

This area offers some great outdoor recreation, whether you like to hike, bike, birdwatch, fish, sail, or paddle a canoe or kayak. Pick up a map of the local

www.granitehillestates.com

SCHOOLS

St. Michael School, grades pre-K 3-year-old through 8th, 56 Sewell Street, Augusta, 623-3491, www.smsmaine.org

SECURITY SYSTEMS

Cayer Security Services, Inc., 208 College Avenue, Waterville, 453-9177, www.cayersecurity.com

SURVEYING

Acme Land Surveying, 108 Fairbanks Road, Suite 5, Farmington, 778-4081, www.acmelandsurveying.com

TREE REMOVAL

Paradis Tree Service, 6498594

WINDOWS

Hammond Lumber Company, at 21 locations including Auburn, Bangor, Belgrade, Boothbay Harbor, Brunswick, Damariscotta, Fairfield, Farmington, Greenville, Pemiquid, Portland, Skowhegan, Wilton, 1-866-HAMMOND, www.hammondlumber.com

WINE AND SPIRITS

Tree Spirits, 152 Fairfield Street, Route 23, Oakland, 861-2723 or 465-3007, www.treespiritsofmaine.com



Changes?
Updates?

New contact information?

Please let us know...

mo.breault@gmail.com
or ebelnews@earthlink.net



Popham Colony

by Martha F. Barkley

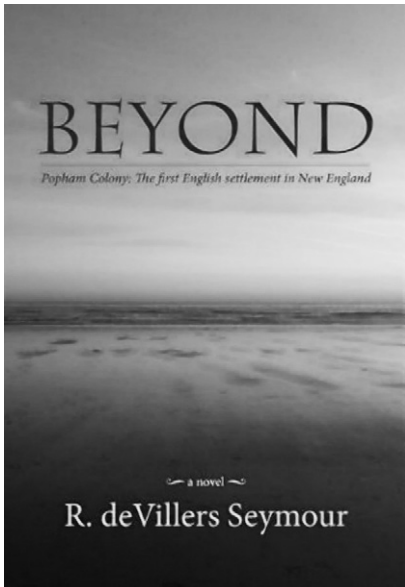
This 2013 London Book Festival GRAND PRIZE historic novel was written by former high school teacher Dick Seymour of North Haven, Maine. He knew very well that students study the 1607 Jamestown Colony, but Popham in that same year is never mentioned in history books. Wonder why? accessible, too.

Perhaps the over 400 year survival of Jamestown explains its enduring fame. The early demise of Popham due to an extremely harsh winter and Abanaki native troubles may be the reason history of the US overlooks Maine. Several different tribes had "serious warfare" right before the October 8,1607 arrival time to these shores. So many events in history are simply luck and timing.

Both colonies settled by the same English company is evident in the ship built on the Kennebec River being named Virginia and the first ship ever built this side of the Atlantic. Quite a major accomplishment in a short-lived Popham Colony. The energetic colonists even managed to send quite a large cargo of huge, harvested trees to help ship building back in the Mother Country.

How did they do so much in such a brief period of time, less than two years? Author Seymour explains the hardships and accomplishments in this novel based on historic records. Merry Old England seems all the merrier for leaders of Popham who return for wives and instructions. Minds and future plans change after long ordeals once again back at Popham.

Those of us who enjoy Popham Beach days, not far from here, will find descriptions of swimming there quite realistic: "In the afternoon, just before high tide, I enjoy swimming up that small river, the one that divides the beach and meanders a mile or so north into a pond. If you time it right, you can float up with the incoming and out with the outgoing tide. The water



gets almost warm."

The historic pen and ink drawings in the front and back of the books show the extensive fortifications built near the beaches and the numbers of buildings within, including a chapel. How did they do all of that? Read Seymour's story and find out. I hope to someday see the colorful replica of The Virginia, which I understand is usually harbored at Jamestown. Maybe Portland will have her visit soon?

"The fort still teems with activity: twenty future masts, tall pine trees, straight and true, limbed and barked and lashed together before being floated downriver with an ongoing tide. They rest next to the Mary and John (ship's name) waiting to be hoisted with block and tackle onto the deck for its upcoming return to Plymouth. These are prizes for His Majesty's growing Royal Navy, trees not

easily found in England."

Keeping warm is survival at Popham Colony, so sex among the colonists and native peoples perhaps requires a mature reading audience for this novel by R. deVillers Seymour who became a professor at Cambridge College in Boston. He now lives in Brunswick with his wife and extended family and Border Collie, Bet.

As usual in my reading, I find the endnotes just as fascinating as the story. Chapter 5 footnote: "Some fifty miles north on the Kennebec, above present day Augusta, lived the Abanaki. Their cultural and trading connections were more aligned with Quebec...all natives in what is now Maine were referred to as Abanaki--or to make things more convoluted, Wabenaki, Penobscot, and Passamaquoddy."



Sprague & Curtis

Real Estate

spragueandcurtis.com

6 2 3 . 1 1 2 3

75 Western Ave. • Augusta, ME   

WINTHROP-Stunning & spectacular lakefront home! Custom built w/many amenities! Marble propane fireplace, custom kitchen, sunken LR, finished lower level leads to yard/lake. Brick & stone patio, firepit, dock, separate bunkhouse cabin, 4 car garage. Beautifully landscaped, great views, convenient to everything! **MLS #1401551 \$645,000**

RICHMOND- Beautiful, immaculately kept, 3-5BR, 2BA home. 3BR on the first floor (incl. master BR with Bath). Lots of options w/2 additional rooms (bedroom/office/or FR) on 2nd floor. Daylight basement w/finished bonus room. Bright, sunny, open interior. Kitchen w/granite & center island, DR w/glass doors to spacious deck, LR w/gas stove. 1st floor HW floors, 1st flr. laundry. Attached 2 car grg. Lots of options w/the daylight basement. A wonderful home!

MLS #1415482 \$299,000

HALLOWELL-To Be Built - Hallowell's Bombhook Estates- Build your dream home. Brand new, custom built, spacious 2,042 SF, 3 BR, 2 bath Colonial w/attached 2 car garage. Open interior, loaded with nice features, master BR suite, full bsmt. Beautiful 1 acre lots in lovely neighborhood. Convenient location. Energy efficient. Public water/sewer, underground utilities. Other home plans and lots available. Picture of a similar style home. **MLS #1237631 \$363,900**

BELGRADE-Waterfront Land-A VERY RARE FIND!! 16.17 ac, 563' waterfrontage on Long Pond, Belgrade. Surveyed potential to be split in 2 lots, (one 7 ac w/263' WF, the other 9.17 ac w/300'WF. SEE MAP). Private/secluded, wooded, shoreline w/sandy area that appears good for swimming/fishing, large tract of land, excellent section of the lake, part of Belgrade Lakes Region. A waterfront paradise home! **MLS #1416996 \$399,900**

FARMINGDALE- Gorgeous standalone ranch style home-condo. Custom built in '09 w/nice extras. Level entry. Offers 3 BR, incl 2 large suites & full BA's. Cathedral ceiling in LR w/beautiful gas fireplace. Fully applianced kitchen, granite counter tops, lots of cabinets with center island & DR. Main level office & finished room over the insulated 2 car garage. Radiant propane heat, FHA alternate heat in spring & central air in summer. **MLS #1411950 \$335,000**

MANCHESTER-4BR, 3.5BA Colonial on a pretty 3+ac lot. Open 1st floor- kitchen w/island, granite/SS appliances, DR w/glass doors to the oversized deck, LR w/gas fireplace, FR, office, BA on 1st floor. All wood floors. 3BR's plus huge bonus room up. Wonderful master BR while, glass shower, oversized walk in. Upstairs laundry. Lower level rec room, 4th BR, office, BA w/walkout to the back yard. Propane heat, 1st fl radiant heat, 3 car garage, more. **MLS #1413073 \$525,000**

GARDINER- Unique 6 unit. Many updates & nice features. 5-2BR, 1-1BR, large, spacious units, very well maintained, natural gas heat, tenants pay own hot water, new kitchens, floors, BA's, painted, etc. Most vinyl windows, 2 story front deck (2018) good history, ample parking, back yard, good in-town location and neighborhood. Wi-Fi thermostats controlled by Seller, auto combo locks- no keys. GOOD INVESTMENT! **MLS #1415552 \$279,900**

CHINA- BRAND NEW RANCH- 2BR, 2 full BA, 1,008SF, one floor living, near China Lake, pretty white kitchen w/pantry, new appliances w/gas range, dining area and LR, attractive laminate flooring throughout, laundry, very heat efficient, wall hung propane boiler, vinyl siding & windows, MBR w/bath & tile shower, metal roof, front/back yard, generator hookup, 1 car garage, more! Be the first to live in this new home! **MLS #1411779 \$163,000**

SIDNEY- Immaculate ranch style home. Many wonderful features & located in one of Sidney's nicest subdivisions! Open concept living area w/cathedral ceilings, pretty maple kitchen, nice loft w/elegant railings, bright & sunny, hardwood floors & ceramic, carpet in BR's, MBR w/vaulted ceilings & full BA, very well maintained, pristine throughout. Attractive front farmers porch, large/full basement w/daylight & walk-out, private back yard, dead end location. Area of fine homes. **MLS #1417688 \$289,900**



★ 2019
KINGFIELD PODS
★ 17th Annual Concert
Saturday, June 29, 2019

Bangor Symphony Orchestra
With special guest stars
The Kruger Brothers
GoldenOak
Identity Crisis
Toscano Music Company
FIREWORKS FINALE!!!

Welcoming music by Western Mountain Trash Can Band



What to do with a Dead Loon

by Kay Ovefield, Great Pond

Memorial Day weekend 2019: We canoed out of our bay towards the swampy area and spotted a loon sitting on a nest. We kept our distance knowing that if a frightened loon leaves the nest, it usually doesn't return. Paddling back later, we were surprised to see two loons sitting on the nest, side by side. Never saw that before. We knew the birds take turns during the incubation period – 4 to 6 weeks -- but it was sweet to see the togetherness. I'd like to think they were the same pair we watched last year, and hope they have better luck with their chick(s) this summer.

Summer 2018: Last year, two chicks hatched, but neither survived. We watched the loons for weeks waiting for the chicks to hatch, and finally one morning, there was Mom loon swimming by with two downy chicks on her back. They developed quickly eventually swimming on their own, and diving. Then . . . one of the babies disappeared. There had been raucous loon chatter the night before, the cry of alarm called a tremolo. In the morning there was just one chick swimming with the parents. It was fortunate two chicks hatched so one could survive. In the loon population only one in four will survive to adulthood.

Days later, we noticed that mother and remaining baby were hanging around the same spot, not ranging very far, and she appeared to be trying to get the chick on her back. It was quite big by now. We worried that it might be injured. On July 17, we found the baby dead on the shore

in our little bay. The two adult loons were staying close to shore, near their dead chick. Our neighbors joined us at the beach, and we all felt as though we were attending a wake. After a bit, we walked away to let the adult loons mourn for a while. They swam back and forth, like worried parents -- pacing, stopping now and then to look at their chick on the shore. Their voices were subdued and mournful.

Meanwhile, I took to the computer and asked Google what to do with a dead loon. They listed the number of the Biodiversity Research Institute in Maine. They collect dead loons to study the cause of death because the loon populations are diminishing. Avian Haven was also listed. It is a rehab facility that can answer questions about sick or injured loons and provide guidance. The Institute advised that we double bag the bird and put it in the freezer till someone could come for it. No one volunteered to put the dead bird in their freezer so we put it in a Styrofoam cooler with a bag of ice. We had examined it and could see no apparent trauma or damage. Meanwhile, the adult loons kept returning to the area.

Next morning, I spoke with several people at the Biodiversity Institute. They suggested groups that could bring the loon to their facility in Falmouth ME. I eventually got a call

from Rob Jones, volunteer driver for the Avian Rescue Organization. He came by after rescuing a baby robin and feeding it liquefied cat food with an eyedropper. That Avian group goes all out.

Rob said most dead loons without signs of trauma usually have died of lead poisoning from things like fishing tackle. I told him we'd love to know what the findings were, but he said that would be unlikely. They send birds – about 2400 a year -- to a few Veterinarians. Later in the day however, Rob called to give us a preliminary report. Surprise. No lead poisoning. No trauma. The poor thing swallowed a very large fish which got caught in its craw. "Bit off more than he could chew," Rob said. Sad. But we were happy that it wasn't a man-made problem that caused its demise.

Maybe this summer our nesters will nurture their chicks to independence. We look forward to the loon count in July. According to Susan Gallo, director of Maine Audubon's Maine Loon Project, the count helps build public awareness about loons, which are one of the best indicators of the health of Maine's fresh water bodies.

Please visit our website

www.sumbelnews.com

Women Caring for the Land

2019 Summer Soil Health Meetings

July 9 - Bar Harbor

College of the Atlantic

July 10 - Augusta

Viles Arboretum

July 11 - Sangerville

Hall's Christmas Tree Farm

8:30 a.m. - 3 p.m.

Free lunch and field tour included!

Are you a female landowner who wants to learn about the best natural resources management of your farmland?

Join us for a **free women landowners meeting** this summer, meet with female conservationists, and discuss how your local professionals from USDA's Natural Resources Conservation Service can assist you with **soil health and conservation planning**.

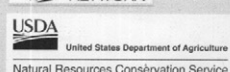
Any female landowner is welcome to attend!

For more information and registration:
wfan.org/maine-2019

or contact:

Paula Salazar
(207) 480-4287
paula.salazar@usda.gov

Presented by:



Handcrafting and Managing Personalized Investment Portfolios for 30 Years



Fiercely independent and family owned

Over 120 years combined experience in financial services

Affiliated with LPL Financial since 1996

Please call or email us to start a conversation

207-873-2200 • info@goldenpondwealth.com

Securities offered through LPL Financial, Member FINRA/SIPC



COMPLETE INSTALLATION SERVICE AVAILABLE | 15 YEAR WARRANTY | FACTORY DIRECT PRICING
FREE SHORELINE ASSESSMENTS & ESTIMATES

YOUR PASSION FUELS OURS

Discover the ShoreMaster difference.

Shoremaster aluminum docks are strong, lightweight and easy to handle and take out. The decking panels are removable and the easy adjust legs are 5-sided for extra strength.

**FREE
DELIVERY***

*In our normal delivery areas. Delivery charge may be applied to outlying areas.



**LARGEST
SHOREMASTER
DISTRIBUTOR in the COUNTRY**

Hammond Lumber Company

21 LOCATIONS ACROSS MAINE

View our Online Shoremaster Catalog
WWW.HAMMONDLUMBER.COM/SHOREMASTER

Auburn • Bangor • Bar Harbor • Belfast • Belgrade • Blue Hill • Boothbay Harbor
Brunswick • Bucksport • Calais • Camden • Cherryfield • Damariscotta • Ellsworth
Fairfield • Farmington • Greenville • Machias • Portland • Rockland • Skowhegan

Lakepoint

REAL ESTATE

(207) 495-3700

221 Main Street, Belgrade Lakes



LONG POND Classic 2BR/2BA Maine log cabin with large deck overhanging water & southern exposure for wonderful lake views. Open 2.25+/- acre lot w/200' +/- waterfront, dock, septic/well, heat & guest cottage! **MLS 1306038 \$499,000**



PARKER POND Amazing 2-acre building lot with western exposure on pristine Parker Pond! Private road, level lot with 200' +/- of lake frontage. Electricity is currently being installed by current owner. Bring your plans! **MLS 1414795 \$149,000**



GREAT POND CONDO Classic 2BR/1BA + loft log cottage at water's edge with private dock, mooring, screen porch, new 10X12 bedroom & tennis courts. HOA fees cover grounds maintenance, so just relax at the lake! **MLS 1412363 \$229,000**



GREAT POND Beautiful sunset views from this 1 acre lot on Great Pond with western exposure providing for amazing sunsets! Come build your new dream cottage with 100' +/- of frontage on this quiet, private road! **MLS 1354112 \$259,000**



GREAT POND Southern-facing 7BR/6BA estate w/400' +/- frontage & 4.45+/- private acres! 1st floor MB Suite w/fireplace, cathedral ceilings, wall of lake facing windows, sauna, tennis courts, lakeside deck, dock & views! **MLS 1376197 \$2,499,000.**



CARRABASSETT VALLEY Fireside lodge at Sugarloaf offers 5BR/4BA, 7 fireplaces, grand staircase, game room, ski-tuning room, huge deck, gazebo, 2-car garage, wood elevator, sauna, security/sound system & more! **MLS 1359587 \$1,575,000**

FEATURED LISTING



LONG POND Exceptional, 3BR/3BA year-round home w/100' +/- lake frontage, lake-side deck, screened porch, new master suite & kitchen, 2-car garage, large deck & panoramic views. Excellent rental history or enjoy for yourself!

MLS# 1416866 \$625,000

www.belgradelakepoint.com



GAIL RIZZO



PAT DONAHUE



STEPHANIE YEATON



REBECCA DUNBAR



JOELLE PELLITTER



TERRY SPENCER



TRISHA CHENEY



BRENT KRIZO

GRANITE HILL ESTATES

Part of:
MaineGeneral Health



Retire your way. Today!

In a community that cares.

Now's the time to join the family at **Granite Hill Estates**, central Maine's premiere continuing care retirement community and part of **MaineGeneral Health**. Call 207-626-7786 or toll free 1-888-321-1119 today to schedule a tour. Offering an impressive menu of amenities:

- Spacious cottage homes and apartments
- Elegant full-service dining plan
- Maintenance and housekeeping services
- Scheduled courtesy transportation
- Social, cultural and educational programs
- Indoor swimming pool complete with hot tub
- Cozy reading room, library and bank
- Attractive game, billiard, and meeting rooms
- Fitness center with an on-site fitness coordinator
- Convenient hair salon, massage spa and meditation room
- Wooded walking trails throughout our 135 acre campus

Awarded
Highest Honors
for
Resident Satisfaction

Holleran National
Senior Living Survey



email: info@granitehillestates.com

60 Balsam Drive, Hallowell, ME 04347

207-626-7786

1-888-321-1119

granitehillestates.com



**BANK
SKOWHEGAN**

Low fixed rate
mortgage

\$500

OFF CLOSING COSTS

— or —

**FREE
APPRAISAL***

Low fixed rate mortgage

No needless complexity. No hidden fees.
Bank Skowhegan, so you can build a life.



Skowhegan
Savings

800.303.9511

Skowhegan.com



STRAIGHT TALK BANKING

*Offer good for new purchases between 04/01/2019 and 08/31/2019. Cannot be combined with any other offer. Savings on either closing costs or purchase appraisal applied at closing.