

2005

# Trade-Related Manufacturing Job Losses in Maine, January 1993 to June 2005

Maine Department of Labor

Maine Center for Workforce Research and Information

Maine Labor Market Information Service

Follow this and additional works at: [http://digitalmaine.com/cwri\\_docs](http://digitalmaine.com/cwri_docs)

---

## Recommended Citation

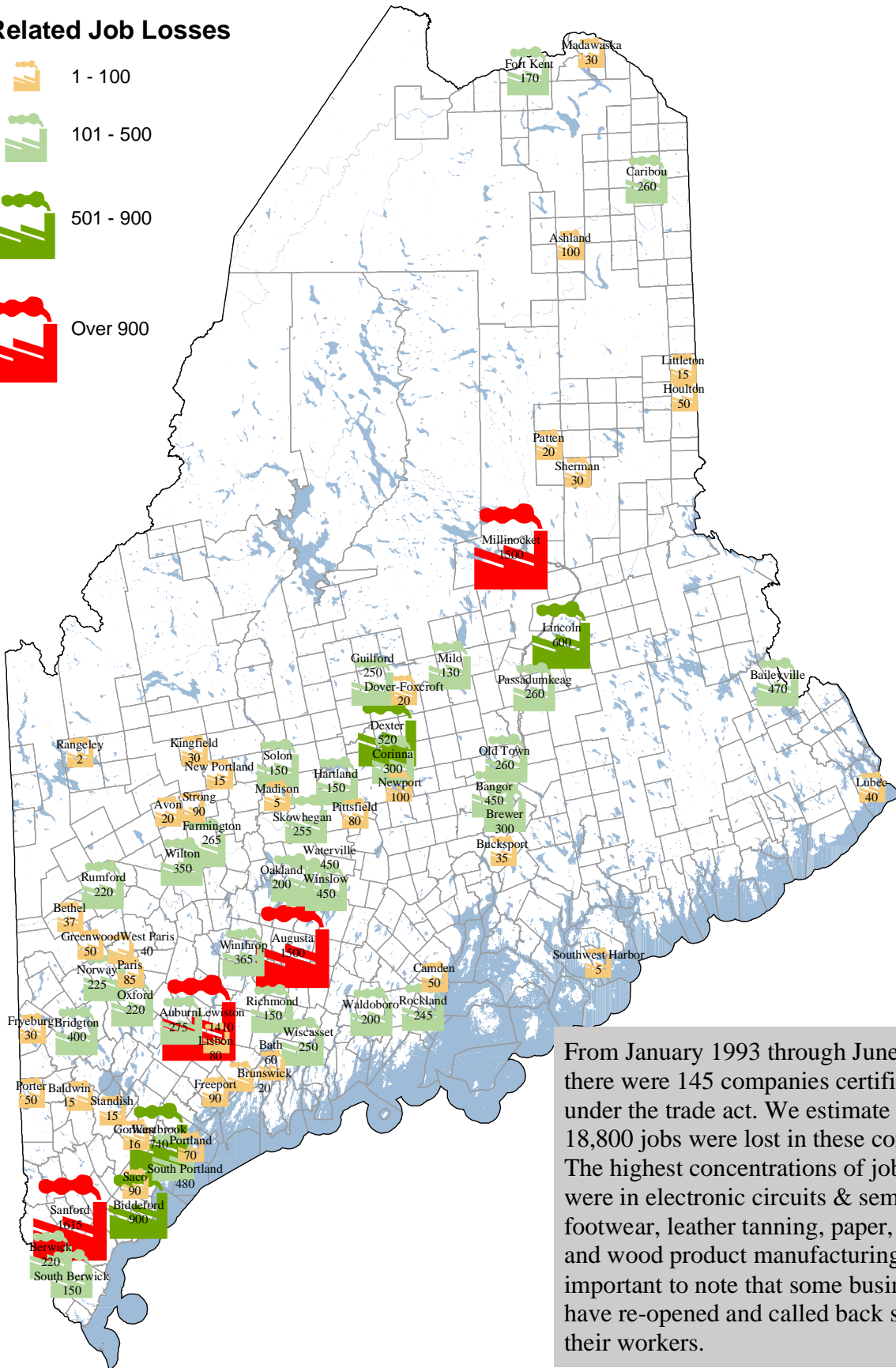
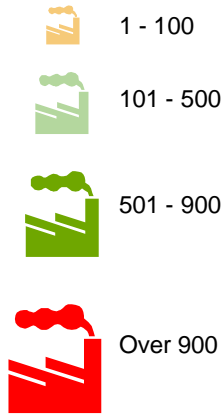
Maine Department of Labor, Maine Center for Workforce Research and Information, and Maine Labor Market Information Service, "Trade-Related Manufacturing Job Losses in Maine, January 1993 to June 2005" (2005). *Center for Workforce Research and Information Documents*. Paper 88.

[http://digitalmaine.com/cwri\\_docs/88](http://digitalmaine.com/cwri_docs/88)

This Text is brought to you for free and open access by the Labor at Maine State Documents. It has been accepted for inclusion in Center for Workforce Research and Information Documents by an authorized administrator of Maine State Documents. For more information, please contact [statedocs@maine.gov](mailto:statedocs@maine.gov).

# Trade-Related Manufacturing Job Losses in Maine, January 1993 to June 2005

## Trade-Related Job Losses



From January 1993 through June 2005 there were 145 companies certified under the trade act. We estimate that 18,800 jobs were lost in these companies. The highest concentrations of job losses were in electronic circuits & semiconductors, footwear, leather tanning, paper, textile, and wood product manufacturing. It is important to note that some businesses have re-opened and called back some of their workers.