

## Thomaston Celebrates The Fourth



Clear skies and a cooling Maine breeze set the stage, Monday, for an ideal Fourth of July. The birthday of the Nation was celebrated quietly in some communities but with many activities in others.

In Rockland, it was a quiet Fourth. At the left above, two members of Explorer Post 206 carry out a dignified disposal of American flags which were worn out or out-dated. Monday saw the official addition of the 50th star for Hawaii. At the Rockland Public Landing, Robert Walker of Owls Head, left and Kenneth Allen of Ingrahams Hill burn a silk 48-star

Flag. The ceremony was conducted near the Festival lobster kettle.

Hundreds of people lined the streets of Thomaston for the annual parade, a highlight of the big celebration the town has seen for a number of years.

In the center photo, two boys from Warren brought their decorated bicycles to participate in the parade. Left is David White and with him is brother Bruce. Music units included the Port O' Rockland Drum and Bugle Corps, the Maine Maritime Academy Band and drill team and the Farmington Old Crow Indians,

among others.

At right is one of the floats entered in the parade competition. Entered by the Thomaston Firemen's Auxiliary, it represents the U. S. Marines raising the flag on Mt. Suribachi, Iwo Jima, an event whose publicity gave American morale a boost at a low point during World War 2. From left to right, kneeling in the foreground is Joe Stackpole, kneeling with him is Anthony DeWolfe, and standing are Kurt Hoffses and Eugene Benner.

Photos by Cullen and Gross

# THE COURIER-GAZETTE

The Hometown Newspaper of the Coast Since 1846

Rockland, Maine, Tuesday, July 5, 1960

EIGHT PAGES—10c COPY

Volume 115, Number 80

## Former Mayor of Rockland Leforest Thurston Dies



Leforest A. Thurston

Leforest A. Thurston, 78, of Rockland, retired realtor and former mayor of Rockland, died Sunday morning at his home, 38 Beech Street. Mr. Thurston was mayor of Rockland from 1934 to

1937.

He was a member of the Rotary Club, King Hiram Council and Claremont Commandery of Rockland; Amity Lodge of Masons and Keystone Chapter, both of Camden. He was an associate member of the Congregational Church at Fort Lauderdale, Fla., and a member of the Rockland Congregational Church.

Mr. Thurston held a dual membership in the Maine Society of Mayflower Descendants and John Alden Colony, Fort Lauderdale, Fla.; and was a member of the Maine Society, Sons of American Revolution.

He was born at North Haven, April 14, 1882, the son of David and Emma Leadbetter Thurston.

Surviving are his widow, Clara Poole Thurston of Rockland; a grandson, Carl Thurston of New Town, Pa.; a granddaughter, Miss Marjorie Thurston of Media, Pa., and a great grandson.

Funeral services will be held Wednesday at the Rockland Congregational Church at 2 p. m., with Rev. Charles R. Monteith officiating.

Interment will be in the Achorn Cemetery, Rockland.

## Elderly Woman Drowns When She Falls Into Well During Weekend Visit

WALDOBORO—Mrs. Mary A. Whalen, 62, drowned late Saturday afternoon when she apparently slipped while drawing a pail of water from a 16 foot well and fell in. She was alone on the premises of Walter Cuthbertson, Augusta Road, at the time.

Cuthbertson, for whom she had formerly kept house for several years, said that he had gone into town for groceries and was away for only half an hour. He noticed the upturned pail near the well while searching for the woman and found her body in the well. Dr. Stanley Lenfest was summoned and he in turn called state pathologist Irving Godoff who ruled death due to accidental drowning following an autopsy.

Mrs. Whalen had recently entered a Cooper's Mills Nursing home and was visiting at the

home of Cuthbertson over the holiday weekend.

Mrs. Whalen has no known survivors.

She was born in Concord, Vt., the daughter of Elmer and Jennie Emery Towne on April 14, 1882.

Funeral services will be held Tuesday at 2 p. m. from the Flanders Funeral Home, Waldoboro, with Rev. Royal Brown officiating.

Interment will be at the Ludwig Cemetery, Waldoboro.

Advertise in The Courier-Gazette.

**NOTICE**  
The Office of  
**DR. BRADFORD BURGESS**  
OPTOMETRIST  
Is Closed  
Until Monday, July 11

## K-L Junior Leaders Attend Conference



ORONO—Here are 4-H Club junior leaders from Knox-Lincoln Counties at the University of Maine. They took part in the first State Junior Leader Conference June 28 to July 1 during the Maine 4-H event. They are, left to right, front row: Donald Hamalainen of West Rockport; Grace Lehto of Warren; Sena Leonard of Camden; Diane Lunden of Warren; Louise Thayer of Warren; Irving Bracy of Tenants Harbor. Back row, Peter Spear of North Nobleboro; Kathy Wyllie of Warren and Steven Chaney of Alna.

## FIRST HORSE SHOW OF SEASON TO BE HELD AT OUTING CLUB RING AT CAMDEN ON JULY 10

CAMDEN — The first horse show of the season in the coastal area will be held at the Camden Outing Club ring, July 10, under the sponsorship of the Whip and Spur Club. It will be a Maine Horse Association recognized show and gymkhana.

Competition will be held in 25 classes.

Officials of the show will be Franklin Clough of Rockport,

show manager; Charlotte Arthur and Isabel Knowlton, secretaries; Franklin Hopkins, ring master; Fred Tripp, announcer; Mrs. Flora Hary and Mrs. Lillian Clough, in charge of ribbons; Wendell Hadlock and Walter Loker, games; and the Twin Town Cadets, concessions.

The ring is at the foot of the ski slope at the Snow Bowl. Plenty of parking is available at the improved facilities.

## Rocklander Is Member of Border Patrol in Texas

John D. Spillane, son of Mrs. Gerard Powers of Rockland, graduated from the U. S. Border Patrol Academy Thursday, June 30, at El Paso, Texas. He completed the equivalent of one year's study of International

Law and Spanish, in an accelerated 13-week program, which also included physical conditioning, hand to hand combat, and pistol qualifications.

Mr. Spillane was a member of the graduating class at Rockland High School in 1950, and expects to receive his degree this year from the University of Maine. His present address is U. S. Border Patrol Headquarters, Laredo, Texas.

Subscribe to The Courier-Gazette.

## Selection of Queen To Be One of Highlights of 12th Annual Broiler Festival

BELFAST — Twelve County Poultry Queens representing 13 of the state's counties, will vie for the crown now worn by 1959 Maine Poultry Queen Jean Gerry of Brewer, at the 12th annual Maine Broiler Festival, here Saturday.

The contestants, selected in a series of elimination contests held this spring by county units of the Maine Poultry Improvement Association and Agricultural Service 4-H Club county agents, include: Constance J. Albert, Lisbon; Jeannette Vaillancourt, Fort Kent; Beverly Lynne Sawyer, Farmington; Priscilla Marsters, Ellsworth; Jane Ann Lint, Windsor; Marietta Erickson, Rockport; Jacqueline Anita Bowsen, Norway; Susan Allen, Skowhegan; Bonita Pearl Murray, Searsport; and Susan Lovell, Sanford.

Arriving in Belfast on Friday, the girls will enter a two-day whirlwind round of activities that includes meetings with the judges, group pictures, rehearsals, and the industry day banquet and dance, Friday evening. On Saturday at 1:30 p. m., a motorcade will take them into Belfast City Park, escorted by midshipmen from the Maine Maritime Academy, for the colorful Queen coronation ceremonies.

The Queen contest will officially start at 2 p. m. with Philip Wolley, publicity director of the Penobscot Poultry Co., as master of ceremonies. Governor John H. Reed and Queen Jean Gerry will share the crowning honors.

Representatives of three of the nation's largest distributors of Maine poultry will serve as judges. James Meehan, general manager, A. Cardamone & Son Co., Utica, N. Y.; Max Loewenstein, president, Loewenstein Poultry & Game, Detroit, Mich.; and Edward Murray, president, Edward Aaron Corp., Kansas City, Mo., will select the winner on a point system—intelligence, 40 points; poise, 30 points; and beauty, 30 points.

The 1960 Maine Poultry Queen will receive a \$225 scholarship, or equivalent in Savings Bonds, presented by the Broiler Festival Committee, and she will be given the opportunity to represent the state's poultry industry at the Miss Maine Vacationland contest at Skowhegan State Fair in August. Last year Miss Gerry won both honors.

More than 15,000 Maine folks and summer visitors are expected to consume over 12 tons of State of Maine broilers, Saturday, at the public "World's Largest Out-door Chicken Barbecue." Serving will start at 10:30 a. m. at Belfast City Park—rain or shine—and continue until 4 p. m.

Hard On Waistline: One pound of sugar contains 1794 calories.

## Flag Raising Is Held At Home of J. E. Stevens

An event for which he had awaited 20 years took place on the lawn of the home of J. E. Stevens, 49 Summer Street, Fourth of July morning with the whole neighborhood taking part. A 54-foot flag pole was raised, Sunday, and a flag raising was held, Monday morning.

The banner, one containing 48 stars, was given to "J. E." some 20 years ago by a close friend. Stevens carefully kept it for the day he could raise it on a pole on his lawn.

The actual raising was done by neighbor Robert Mayer, home for the holiday from the Navy, and Cub Scout Michael Gross while some 25 neighborhood children and adults sang the National Anthem. As Old Glory flew from the top of the steel pole the group gave the Pledge of Allegiance to the flag.

Stevens, in his 80's, has been retired for nearly 30 years and devotes his time to his large New England home and to Masonic activities. He recently completed a history of Rockland Lodge of Masons which ran to 174 printed pages.

## Stonington Man Found Dead In Fishing Camp On York Island, Monday

YORK ISLAND—A Stonington fisherman was found dead in his bed at a York Island camp by a son, Monday morning, it was reported to Knox County Sheriff P. Willard Pease. Arthur Jenkins, 65, was in a camp on York Island which he rents for the summer from Dr. Walter P. Conley of Camden. At press time there was no report from the island on the east side of Isle au Haut to indicate the cause of death.

Jenkins was expected back in Stonington on Saturday to meet his son Alvin of Niantic, Conn. When the father did not return the son tried to go the eight or

ten miles from Stonington to York Island Sunday but the wind was too high for the trip.

Knox County Deputy Sheriff Clifford Carroll of Camden and medical examiner Dr. David Mann left by Coast Guard tug 64300 from Rockland at noon Monday to investigate.

Jenkins was one of several Stonington fishermen who spend the summer on York Island to be near the summer lobstering grounds. Apparently Jenkins, who had been coming to York Island for a number of years, was the first of the summer arrivals so was alone on the mile-long island.

## COMMITTEE CHAIRMEN ARE NAMED FOR CAMDEN'S OPEN HOUSE AND GARDEN DAY

CAMDEN — Committee chairmen for the Camden Garden Club open house and garden day to be held Thursday, July 14, from 10 a. m. to 5 p. m. have been announced as follows:

Publicity, Mrs. Joseph L. Badger; folders and advertisers, Mrs. John Wilson, Jr.; houses, Mrs. Ambrose C. Cramer; hostesses, Mrs. D. Preston Wysoy; tickets, Mrs. John Montgomery; directional signs, Mrs. William C. Morris; transportation, Mrs. Richard P. Cox; traffic, Mrs. A. Murray Austin; and flower arrangements, Mrs. John F. Anderson.

On July 14, the owners of seven beautiful homes and gardens in the area will open them to the public. The proceeds from this tour will be used by the Garden Club to improve the

beauty of their town. Three of the homes have been described in a previous edition of The Courier-Gazette.

The fourth on the tour itinerary is the gardens of Nimaha, Beauchamp Point, Rockport, the summer home of Mr. and Mrs. Cary Bok. Nimaha derives its name from a Tarratine Indian word, meaning "Misty Waters". The lawns, rose garden, herb garden, and other gardens have all been blended into a stand of native trees. The famous rose gardens, badly damaged in the winter of 1958-1959, have been replanted.

Next is Orchard Farm the summer home of Mr. and Mrs. John S. Ames, Jr., at Beauchamp Point, Rockport. Its spacious verandas overlook Rock-

(Continued on Page Two)

## ALFORD LAKE GIVES UP GOOD SALMON TO ROCKLAND ANGLER

Alford Lake at East Union is fertile territory for the angler as Carl Moffitt of 131 Limerock Street can testify. This four

and three-quarter pound salmon made a handsome trophy. Taken on a Dave Davis spoon and worms, it was the largest fish Moffitt ever landed. He took it a week ago Sunday.

While fishing with Alfred Starr, Jr., Sunday, July 3, Starr boated a seven pound, six ounce brown trout. Starr also used a Dave Davis and worms. This makes two years in a row that Starr has taken a lunker out of Alford Lake.



Carl Moffitt and Friend

## FIREMAN - Stationary Boilers

STEADY YEAR-ROUND EMPLOYMENT

\$69.00 per Week - 44-Hour Week

Must have experience in firing steam boilers 100-150 lbs. pressure. Capable of assuming shift responsibility for operating boilers and boiler room auxiliaries. Paid holidays, vacation and other group benefits. Apply for interview at:

**MARINE COLLOIDS, Inc.**

CROCKETT'S POINT

ROCKLAND, MAINE

**HEAR**  
The Old New Englanders  
ON WRKD  
WEDNESDAY AT 7:15 p. m.

SPONSORED BY THE COURIER-GAZETTE

**SHOP OUR LARGE LINOLEUM DEPARTMENT**  
\* Expert Mechanics  
\* Free Estimates  
\* Large Selections of Inlaid Linoleum  
\* All Floor and Wall Tile  
\* Huge Variety Soft Carpets  
Cut to Order  
**MEREDITH FURNITURE COMPANY**  
ROCKLAND  
Phone LYric 4-4845 44-T-4



# TALK OF THE COUNTY

**Rockland**—Mrs. Gertrude Hupper of Martinsville has announced that the Home Preparedness Course, part of the Civil Defense program, has been terminated at Rockland. The speaker at the final meeting was George Fay of Tenants Harbor, former fire chief of the St. George Fire Department.

**Rockland**—Rockland police are investigating a hit and run accident at about 11:15 Sunday night on Main Street near the corner of Park. A car operated by James B. Smith of Camden had just turned the corner into Main from Park Street when a car which had been parked on the left side of Main Street started up and struck the Smith car on the left side and bumper, and continued on without stopping. Smith obtained the registration number which was assigned to a Bangor resident. No estimate of damage was given.

## MARRIED

**Standel-Griffith**—At Rockland, July 2, Philip Richard Standel of Boston, Mass., and Nancy Jane Griffith of Rockland and Boston, by Rev. William H. Robbins.

**Hupper-Thayer**—At Bar Harbor, July 2, Joel Henry Hupper of New York and Tenants Harbor and Eleanor Joan Thayer of New York City, by Rev. Leopold Damrosch of St. Saviour's Episcopal Church, Bar Harbor.

**Ludwig-Upham**—At Washington, June 2, Bunker Earl Ludwig, Jr., of Washington and Rebecca Lee Upham of Washington, by Rev. George Duff.

**Stallman-Adams**—At Seaside, N. Y., Barron Edward Stallman of Seaside, N. Y., and Betty Louise Adams of Mamaroneck, N. Y., by Dr. Howard Stone Anderson.

## DIED

**Whalen**—At Waldo, July 2, Mrs. Mary Ann Whalen of Waldo, age 62 years. Funeral services will be held Tuesday at 2 p. m. from the Flanders Funeral Home in Waldo, by Rev. Royal Brown officiating. Interment will be in Ludwig Cemetery, Orris Corner, Waldo.

**Thurston**—At Rockland, July 3, Leforest A. Thurston, age 78 years. Funeral services will be held Wednesday at 2 p. m. from the Rockland Congregational Church with Rev. Charles R. Monteith officiating. Interment will be in Achorn Cemetery in Rockland.

Read The Courier-Gazette.

## EASTMAN'S BARBER SHOP

Located Next Door to Ferrara's Shoe Repair Shop  
MAIN ST. - ROCKLAND  
ANNOUNCES AN ADDITION TO HIS BARBER SHOP  
Waiting Should Be Kept To a Minimum  
79-80

## SCIENTIFIC TREE CARE

Skill founded on research, not guesswork is available through your local Bartlett Representative.

You will find him listed in your phone directory.

## BARTLETT TREE EXPERTS

CAMDEN, MAINE  
TELEPHONE CE 6-3785  
65-T-11

## AUCTION!

Saturday, July 9th — 10 a. m.

Martinsville Grange Hall

ROUTE 131 — MARTINSVILLE

SALE OF ANTIQUES — SECOND HAND ITEMS

AND FURNITURE

LUNCH SERVED BY THE GRANGERS  
80-81

## Hotel Touraine

CENTER OF EVERYTHING YOU WANT TO SEE AND DO

IN BOSTON

Handy to

- SUBWAYS
- THEATERS
- SHOPPING
- HISTORIC SITES
- BUSINESS DISTRICTS

Modern, spacious rooms at moderate rates • AIR CONDITIONING and 21" TV • Children under 14, no charge • Parking available (Member Diners' Club, American Express and Carte Blanche)

You'll enjoy the Sable Lounge and the Touraine Restaurant

For reservations, write to Thomas J. Walsh, General Mgr., Hotel Touraine, Tremont & Boylston Sts. — Tel. Hancock 6-3560

47-T&Tb-105

## THE COURIER-GAZETTE

Editor and Publisher Sidney L. Cullen  
Published by Courier-Gazette, Inc.  
At 465 Main Street, Rockland, Maine  
Each Tuesday, Thursday and Saturday  
Subscription Rates: \$7.50 per Year, Six Months \$3.75,  
75 cents per Month, All Payable in Advance.  
Entered as Second Class matter at Post Office  
Rockland, Maine, under the Act of March 3, 1879.  
In Continuous Publication Since January 20, 1846

## EDITORIAL

### A STEP TOWARD BETTER TRAFFIC CONTROL

Bright orange crosswalks have been painted at strategic locations on major city streets the past two weeks. Over the weekend, traffic lanes were painted on Park Street between Union and Main. This step will serve to lessen the confusion in that area and direct the flow of traffic to Main Street north and Main street south. Now, if they could continue on with the project and paint a center line on Main Street north of Park Street it could serve to cut down the weaving back and forth from lane to lane by some motorists. The project has been carried out by the Police Department as a job they took over from the Highway Department which is tied up with street repair and tarring. We might mention that the pedestrian is King when he is in a painted crosswalk. Even though he has wandered out against the lights, his safety is still the responsibility of the motorist.

### A PART OF MAINE IN STATE OF HAWAII

The fiftieth state, Hawaii, officially joined the Union yesterday and the 50 star flag was flown for the first time. Welcome to the state in the middle of the Pacific. Its people have long since proven their right to statehood. There is more than a little pride over the step in New England and especially in Maine for many of the names of leading families in the Islands are those which have roots in Maine. Largely, they are families which sent sailing masters and crews to the Islands generations ago or men of the clergy who went as missionaries.

## BIDU SAYAO, OPERA STAR AND CAMDEN SUMMER RESIDENT, IS ONE OF AUDITION JUDGES

CAMDEN — Madame Bidu Sayao, famed international opera star and Camden summer resident, and Arthur Hackett, Portland native and former Boston Symphony Orchestra soloist, have been named judges for the Metropolitan Opera auditions to be held at Colby College on Aug. 19. The auditions, sponsored by the National Council of the Metropolitan Opera, Northern New England District, are open to singers from Maine, New Hampshire and Vermont.

Madame Sayao, a native of Rio de Janeiro, made her debut in Rome and sang in Europe for the next ten years. She made her American debut in Carnegie Hall in 1936 with Arturo Toscanini and at the Metropolitan Opera House in New York the following year.

Other judges are Edna Phillips, renowned harpist from Philadelphia, and a protégé of Carlos Salzedo, one of the world's outstanding harpists and Camden summer resident; Miss Elizabeth Westmoreland of Philadelphia and Camp Merestead, Camden; and Morton Howard, vice-president of the Robin Hood Dell concerts in Philadelphia.

Singers who wish to appear in the auditions are asked to contact Mrs. Parker Heath, Jr., or Mrs. Robert Eddy of Camden. Deadline for applications will be Aug. 9.

## NEW MOVIE TO HAVE AREA PREMIERE AT THE DRIVE-IN

The Eastern Maine premiere of a new movie produced by and starring Jerry Lewis will be held at the Rockland Drive-In Theater on Wednesday. The world premiere of Bell Boy was held in New York City last week. The picture is a rollicking comedy in typical Lewis style with a dash of pantomime to



Jerry Lewis

give a new twist.

Theater manager Mike DiRenzo also announced that the front of the big screen will have a new coat of paint to celebrate the occasion.



Typewriters and Adding Machine Repair Service  
ALL WORK GUARANTEED  
State News Co.  
148-T-11

## DRUG FACTS

YOUR SKIN IS AS LOVELY AND AS DELICATE AS A ROSE! THAT'S WHY I BUY THE BEST PREPARATIONS FOR YOU... AT

GOODNOW'S  
McDONALD'S THOMASTON



Goodnow's  
McDonald's Drug Store  
PRESCRIPTIONS  
CORN MAIN & PARK ST.  
ROCKLAND  
TEL LY 4-5131  
MAIN STREET  
THOMASTON  
TEL FL 4-6161

## MAGIC NUMBERS ARE 8-6 AS THREE LINNOX GAMES DECIDED BY THAT SCORE ON FRIDAY

CAMDEN — All three Friday night Babe Ruth Linnox League games ended with the same score. It was Camden over St. George by 8-6; Thomaston over Wiscasset by the same margin; and Rockport over Waldoboro. Camden racked up its fifth straight win with a three run splurge in the bottom of the sixth which erased a St. George lead built up by a six run rally in the top of the same inning. An error started the winning rally, followed by singles by Bob Berry and Ken Hibbert, as well as a Bob Whitley double. Thomaston won its first game in an uphill battle which saw them finally go ahead for the first time in the sixth inning with a four run rally sparked by singles off the bats of Jimmy Watts, Jon Grafton and Charlie Monroe, along with two walks and an error. Wiscasset had scored five in the first without benefit of a hit as three errors and a walk went along with a wild pitch and fielder's choice that failed.

At Waldoboro the home team led into the fourth but Rockport fashioned a five run rally off singles by Terry Costa, Nate Peasley and Buzzy Barrows, plus three walks and two errors.

**Scores:**  
St. George 000 600 0-6-4-5  
Camden 500 300 x-8-10-1  
Wiscasset 022 004 x-8-6-4  
Thomaston 022 004 x-8-6-4  
D. Soule, Pelletier (3) and Rankin; Melvin and Watts.  
Rockport 201 500 0-8-6-2  
Waldoboro 500 001 0-6-7-4  
Peasley and Costa; Kennedy, Crabtree (4) and Creamer.

**Linnox League Standings**

Team	Won	Lost
Camden	5	0
Rockland	4	2
Rockport	4	2
Waldoboro	3	3
Wiscasset	3	3
Thomaston	1	5
St. George	0	5

**Games Tuesday**  
Thomaston at Rockland  
Camden at Rockport

Veazie of West Bridgewater, Mass., are at their family home- stead on Russell Avenue.

Mr. and Mrs. Peter Yoder and son, Thomas Austin, of Fryeburg spent the holiday weekend with her parents, Mr. and Mrs. Robert Young.

It has been announced that the members of the Rockport Garden Club will also tour Thursday the flower gardens of Mr. and Mrs. Cary Bok as well as Mr. and Mrs. Ambrose Cramer and Mrs. Harold Haskell. A picnic will precede the tour at noon at Walker Memorial Park. A baby sitter will be present to care for the children while the mothers are touring the gardens.

## FRIENDSHIP

MRS. HELEN L. BAIRD  
Correspondent  
Tel. Temple 2-9954

Mr. and Mrs. Walter Coito and three children of Saco spent the weekend with her parents, Mr. and Mrs. Fred Felker. Michael and Mathew Coito remained to spend the week with their grandparents.

Daniel Turner of Greenwich spent the weekend with Miss Lois Hanson.

Samuel Freeman of South Acton, Mass., is spending the summer with his son and daughter-in-law, Mr. and Mrs. Samuel Freeman, Jr.

Arthur MacFarland and Frederick MacFarland are guests this week of this aunt and uncle, Mr. and Mrs. Walter Coito, in Saco.

Mr. and Mrs. Harold Chase of New Bedford, Mass., are spending three weeks at their cottage at Timber Point.

Mr. and Mrs. Donald Gartland of Washington, D. C., have been visiting Mr. and Mrs. Arthur Barbour.

Mrs. Norman Southworth arrived on Wednesday to spend the summer at her cottage at Davis Point.

Miss Deborah Pratt, daughter of Mr. and Mrs. Robert A. Pratt, sailed from New York on Tuesday to spend the summer in Europe.

Rev. and Mrs. Everett E.

## ST. GEORGE VICTORY HELPS WALDOBORO GAIN FULL GAME ON DAMARISCOTTA SUNDAY

ST. GEORGE—The St. George Torpedoes defeated the Damariscotta Redlegs 5-2 Sunday to cut a full game from that team's league lead over Waldoboro, which defeated Thomaston 8-3 Sunday.

Dave Lowell again gave a stellar performance on the mound for the winners as he fanned ten and scattered six hits, none of which figured in the scoring. Damariscotta tallied their two in the first when two errors were bunched with two fielder's choices and a sacrifice.

St. George tied it in the second and went ahead in the third with a run on two walks and two errors. They iced the verdict in the fifth as Bud Hodgkins doubled in two who had reached on a walk and an error. Don Bowman was the only player with two hits.

Waldoboro won the battle of home runs with Thomaston as they made their three good for

six runs while Thomaston's trio accounted for only three, all being solos. Bobby Howe hit his first of two in the third with one aboard and in the seventh with no one on. Lloyd Hodgkins hit a three-run poke in the fourth inning and Waldoboro scored two more when Billy Chase and Stan Hanna singled behind a walk.

Thomaston's Doug Miller sent one over the fence in the fourth and in the eighth Bobby Watts and Floyd Johnson connected. Bob Tibbetts, Tink Powell and Howe had two hits for the winners; Gary Seavey and Lou Cook for the Clippers.

**Scores:**  
Damariscotta 200 000 000-2-6-5  
St. George 021 020 00x-5-4-2  
Gaw, Chapman (6) and Burnham; Lowell and Seastrom.  
Thomaston 000 100 020-3-9-1  
Waldoboro 002 500 10x-8-9-0  
Hill, Tweedie (5) and Alex; B. Chase and Hanna D. Chase (8).

## Garden Day

(Continued from Page One)

port Harbor and was built by T. Charlton Henry, Philadelphia, in the late 1890's. Incorporated in this house, which is one of the oldest summer residences, is the original old farm dwelling built by the McIntire family in 1820. The small circular staircase is a part of the old house.

The Victorian home of Mr. and Mrs. T. V. Sprout in Rockport, was built about 1895 by Herbert S. Shepherd, a leading financier of the time. There are four Corinthian pillars at the entrance to the small library, and they, as well as the

fast of these homes is the modern Colonial owned by Mr. and Mrs. F. M. Ingersoll, Old County Road, Rockport. It sits on a hill and has a broad sweeping view of Penobscot Bay. The delightful exterior and charming planting enhance its dramatic location. It is furnished with many interesting family belongings and antiques which have been fitted into the modern setting with great ingenuity. The modern kitchen and the porch with a fireplace, add to the comfort and charm of the house.

Pender returned home on Tuesday after spending a week's vacation in Jeffersonville, Vermont, and Alton Bay, N. H.

John Thompson is a patient at Knox Hospital, Rockland.

Mr. and Mrs. Ralph E. Winchenpaw and daughter Deborah Gene and Mrs. Ray Winchenpaw attended the dedication for the new ferry service at Vinalhaven on Sunday.

## H. M. PAYSON & CO.

Investment Bankers

ESTABLISHED 1854

Member Boston Stock Exchange

93 EXCHANGE STREET PORTLAND, MAINE  
ON WEDNESDAYS  
HOTEL KNOX, THOMASTON  
ROGER B. RAY  
144-11

## BUSINESS OPPORTUNITY

TEXACO HAS FOR LEASE

(ON A GALLONAGE BASIS)

## MODERN SERVICE STATION

ON U. S. ROUTE 1 IN WALDOBORO

PAID TRAINING TO MAN SELECTED

An Excellent Opportunity For the Right Man

FOR DETAILS CALL LY 4-5961, EVENINGS CE 6-3271  
72-11

Official used car reports prove The Lark has:

# HIGHEST RESALE VALUE

Tough, hard-to-convince used car salesmen from state after state report (Red Book Region A): The Lark definitely holds its value better than any other low-priced, 6-passenger, U.S. car, including the regular Rambler, Ford, Chevrolet

and Plymouth — and as much as 1/3 better. This new estimate of value is additional assurance that the smart buy or the "Best Buy" as CARS magazine puts it — is The Lark by Studebaker. Check these facts at your Studebaker Dealer's.



See the Compact without Compromise... THE LARK BY STUDEBAKER

GET A RECORD-BREAKING DEAL FROM YOUR STUDEBAKER DEALER HE'S OUT TO MAKE ONE ANOTHER "SET-A-RECORD" MONTH.

SPECIAL LARK VALUE: PRICES FOR 2-DOOR DELUXE SEDAN STARTS AT LOWAS \$43.19\* PER MONTH

WARREN MOTORS

WARREN, MAINE

80-11

Listen to the "WORLD JAZZ SERIES" over CBS RADIO. Yours for only \$4.99

## ROSS MOTORS, INC.,

Jeep  
Rockland  
TEL LY 4-7233





# 106th Annual Report of Rockland, Maine For the Year 1959

Rockland, City of Promise — Gateway of the Penobscot

**CHARLES A. HAYNES**  
City Manager  
City of Rockland, Maine  
EXECUTIVE DEPARTMENT

April 1960

To the City Council and Citizens of Rockland:

It is my privilege to submit the 106th Annual Report of the City of Rockland.

The past year has been an eventful one in many ways, as will be seen throughout this report, but detailed accounts will be found under each department.

I would like to take this opportunity to thank the City Council for their splendid support during the year and the department heads and employees for the excellent job they have done.

Respectfully submitted,  
**CHARLES A. HAYNES**  
City Manager

## City of Rockland, Maine BOARDS AND COMMISSIONS

Elected by the People  
CITY COUNCIL

	Term Expires
Frederick E. Tripp, Chairman	1959
Gerald S. Grant	1959
Charles E. Bicknell, 2nd	1960
William A. Glover	1960
Carl O. Blackington	1961

### SCHOOL DISTRICT

	Term Expires
David G. Hodgkins, Jr.	1959
Paul D. Merriam	1959
E. Clifford Ladd	1960
Samuel W. Collins, Jr.	1961
Alfred Schrenk	1961

### PORT DISTRICT

	Term Expires
Richard G. Spear	1959
Ervin Curtis, Chairman	1960
Maurice McKusie	1961
Stuart T. Ames, Jr.	1962
Ralph L. Brown	1963

Appointed by the City Council

### PLANNING COMMISSION

	Term Expires
William E. Koster	1959
Almon Young	1960
John M. Joseph, Jr.	1961
Stuart Burgess	1962
Wendell Hadlock, Chairman	1963

### BOARD OF ASSESSMENT REVIEW

	Term Expires
H. Elmer Montgomery	1959
Ervin L. Curtis	1960
Horatio C. Cowan	1961

### PERSONNEL EXAMINING BOARD

	Term Expires
Frank L. Kaler	1959
Harold Leach	1960
James Connellan	1961

### RECREATION ADVISORY BOARD

	Term Expires
Howe Glover	1959
Alfred L. Nichols	1959
Wesley N. Wasgatt	1959
William H. Butler	1960
William Karl	1960
Virginia Knight	1960
Charles E. Bicknell, 2nd	1961
Joyce Champlin	1961
Gertrude Jordan	1961

### LIBRARY ADVISORY BOARD

	Term Expires
Louise Burgess	1959
Samuel W. Collins, Jr.	1959
Dorinda Coughlin	1960
Cleveland Sleeper, Jr.	1960
Beatrice Grant	1961
Marion Miller	1961

### COMMUNITY BUILDING BOARD OF CONTROL

Appointed by Y. M. C. A.

	Term Expires
Raymond Perry	1960
Lawrence Miller	1959
Henry Marsh	1959

### BOARD OF ZONING APPEALS

	Term Expires
Christy Adams	1959
Blaine Merrill	1960
Everett Spear, Alt.	1960
Osgood Gilbert	1961

## BOARD OF ECONOMIC DEVELOPMENT

	Term Expires
Bertram G. Snow	1960
Sidney L. Cullen	1960
E. Clifford Ladd	1961
Nathan Bard	1961
Wendell S. Hadlock, Chairman	1962

## ADMINISTRATIVE OFFICIALS

Accountant	Katherine A. Veazie
Assessor	Cheever C. Ames
Building Inspector	Cheever C. Ames
City Attorney	Jerome C. Burrows
City Clerk	Gerald U. Margeson
City Electrician	Vacant
City Engineer	George E. Trafton
City Manager	Charles A. Haynes
City Matron	Mrs. Josephine J. Rice
City Physician	Dr. Oram R. Lawry, Jr.
Dairy Products Inspector	C. F. French
Deputy City Clerk	Mrs. Dorothy D. Radcliffe
Finance Director	City Manager
Fire Chief	Wesley H. Knight
Harbor Master	Bertram G. Snow
Health Officer	Dr. Oram R. Lawry, Jr.
Librarian	Doris M. Scarlott
Personnel Director	City Manager
Plumbing Inspector	E. A. Campbell
Police Chief	Maurice H. Benner
Public Works Superintendent	Harold F. Halligan
Purchasing Agent	City Manager
Recreation Director	Robert Morrill
Sealer of Weights and Measures	Herbert Anderson
Superintendent of Schools	Bruce J. Kinney
Tax Collector	Carl O. Nelson
Treasurer	Carl O. Nelson
Welfare Director	Joshua N. Southard

## LOOKING BACK

Authorized use and purchase of six voting machines.  
Purchased Maine Central Railroad station and converted it to City Hall.  
Constructed drain at south end.  
Completed Center Street sewer.  
Replaced float at Public Landing.  
Discontinued City Farm.  
Engaged Fay, Spofford & Thorndike, Engineers, of Boston, to plan sewerage system including disposal system at no present cost to City.  
Built skating ring at South School.  
Social Security benefits for employees.  
Five per cent raise for all employees.

## LOOKING AHEAD

Purchase of catch basin cleaner for highway department.  
Add another float at Public Landing.  
Replace ramp at Landing.  
Paint pier at Landing.  
Repair roof on Chamber of Commerce building and Community Building.  
Construct new lockup at Police Station.  
Resurface Broadway.  
Continued study of off-street parking, relief of traffic congestion on Main Street, and sewage disposal.

## DEPARTMENT OF FINANCE

### Division of Accounting and Control

Employees: 1 Full Time Per Capita Cost \$ .42  
2 Part Time

The City Accountant's Office is one office of the municipal government that has no so-called "busy" or "slack" season. With weekly payrolls to make out and bills being constantly checked, paid, and sent out, a general routine schedule is adhered to quite closely in order to get everything done within the month's space of time.

During the past year, 3135 purchase orders were made out covering all departments, these in turn being checked against each invoice presented for payment before supporting vouchers are approved for payment. Payroll checks amounting to \$41,365.50, covering 256 employees, were written and 1734 checks covering materials purchased by the City were also written. Individual personnel records are also kept for each employee's earnings and various deductions.

A general record for all department budgets is kept in this office and each department head checks at regular intervals to compare his figures with the overall picture. This office also prepares the monthly financial statement for the City Manager and City Council.

### YOUR TAX DOLLAR AND WHERE IT GOES

General Government	.06
Public Safety	.16
Health	.005
Public Works	.16
Public Welfare	.03
Library	.01
Recreation	.02
Unclassified	.04
Debt Service	.04
Education	.42
Port District	.015
County Tax	.04
	\$1.00

## Treasury Division

Employees: 2 Full Time Per Capita Cost \$1.14

The head of this department is both Tax Collector and City Treasurer. He receives the commitment of taxes from the City Assessor, is responsible for collection of same, receives all monies collected by the several departments of the City, and signs payroll checks and checks for payment of bills.

As of December 31, 1959, the Tax Collector reports that the balance of uncollected taxes amounts to \$77,027.27. This figure is made up of the following: 1956 taxes uncollected, \$577.45; 1957, \$454.08; 1958, \$1,141.01; and 1959, \$74,854.73.

The Treasurer reports a cash balance of \$15,694.99 as of December 31, 1959.

## Assessment Division

Employees: 2 Full Time Per Capita Cost \$1.00  
7 Part Time

The Assessment Division is responsible for the assessing of property and for the preparation of all assessment and tax rolls and tax notices.

The annual house to house canvas, as required by the State Statutes, will begin April 1st, 1960.

The year of 1959 showed a gain in new construction although depreciations had to be allowed on some of the older property.

Veterans' Exemptions were increased by \$22,000 as of December 31, 1959.

## HEALTH DEPARTMENT

Employees: 3 Part Time Per Capita Cost \$ .49

### City Physician and Health Officer

The city physician and health officer reports the following activities for the year 1959:

64 Office Calls
6 House Calls
68 Hospital Calls
1 Emergency Call to Jail
1 Call to City Farm

He reports that 122 communicable diseases were reported during the year.

Four inspections of property for recommendations as to drainage and sewage system were carried out.

School children not seen by family physicians were examined for authorization to return to school following contagious diseases.

He also issued certification of immunization records for persons traveling abroad.

## Plumbing Inspection Division

Plumbing inspection for the year ending December 31, 1959:

Toilets	79
Lavatories	82
Bath, Showers and Set Bath	58
Sinks	76
Hot Water Tanks	22
Floor Drains	35
Dish Washers	3
Drinking Fountains	2
Store Refrigeration	1
Washers	5
Septic Tanks	7
Other Fixtures	4

## Dairy Products Division

During 1959, the following dairies were inspected and found satisfactory:

John Anderson	South Thomaston
Joseph Anderson	Owls Head
S. B. Aylward	South Thomaston
Joseph Baum	South Thomaston
Charles Blackington	Rockland
Victor Bucklin	Rockland
Raymond Carroll	Rockland
Blanche Frankowski	Thomaston
Grant Dairy	Rockland
Hall Brothers	Thomaston
Harjula Brothers	South Thomaston
Karl Niemi	South Thomaston
Alton Pierce	South Thomaston
Kenneth Pierce	South Thomaston
Earl Randall	Rockport
Round Top Farms	Damariscotta
Donald Paulsen	Thomaston
Wm. Vinal Dairy	Thomaston
Homer Gilbert	Rockland
Robert F. Watts	Thomaston

Information with regard to requirements for selling milk was given to those opening markets and starting dairies, and three dairies have gone out of business; the trend is toward fewer dairies and larger herds.

Milk samples have been purchased from all of the listed dairies and several of the markets and been tested for fat, sediment, and streptococcus of the udder; the few complaints received with regard to milk not being satisfactory, have been investigated.

Information has been supplied to several summer visitors and local people with regard to pasteurization and homogenation.

## PUBLIC WELFARE DEPARTMENT

Per Capita Cost \$3.77  
Employees: 2 Full Time Director and City Matron  
1 Part Time City Physician

The Public Welfare Department of the City of Rockland, as constituted by city ordinance, consists of the director of public welfare and the city matron. These officials are augmented as necessary by the city physician who works in close coordination with the director. This team is responsible to the City Manager for the proper management of the city's entire public welfare program. It is not a simple task since it presents to the department two basic — and often contradictory — duties to fulfill. There is the primary duty to see that no destitution exists in Rockland, within the city's knowledge, and such assistance is rendered as is deemed necessary. Facing this and exerting a contrary pressure is the constant obligation of all city officials to keep costs of government down to its lowest practicable level. Taking heed of both these directives, and weighing one against the other, the director and his assistants must judge and pass on each individual case as it presents itself. There is also a third factor which may occasionally complicate these basic rules. It is the humanitarian and economic value of "rehabilitation". Economy alone would dictate that, where possible, the "case" is restored from his misfortune to a status of self-support and self respect. This process may entail an "investment" that is something more than pure relief.

The personnel of this department wishes to publicly express their thanks to the numerous individuals, organizations, and stores who have donated clothes, footwear, and bedding for

the use of needy citizens. This supply has directly benefited the taxpayers as well as the recipients.

Our charitable friends included citizens of North Haven, Vinalhaven, St. George, Thomaston, Camden and other communities. To them, we express a heartfelt "Thank You".

On October 1st, 1959, the City Farm was closed after serving the City for 105 years. The number of inmates at the Farm did not warrant the expense of maintaining the same.

The Rockland District Nursing Association brings professional nursing assistance to all needy families who might otherwise suffer from the want of it. In this respect, it proves to be an invaluable adjunct to the city's agencies for health and welfare. It is appropriate that the sincere appreciation felt throughout the city for the fine work of this organization and its loyal workers be given public expression in this report.

The city matron is assistant to the director of public welfare. She also assists the police department when called.

### Welfare Case Load for 1958-1959

	1958	Cases	People	1959	Cases	People
January	32	124		49	217	
February	27	104		52	237	
March	21	80		37	167	
April	17	55		36	158	
May	15	55		24	69	
June	11	21		16	36	
July	11	21		18	42	
August	12	27		18	42	
September	13	39		17	32	
October	15	52		19	41	
November	19	85		27	69	
December	34	147		36	104	
1958	229	810		349	1214	

## City Matron

Under the Welfare Department:

A large amount of used clothing, shoes, bedding and household necessities given by the people of Rockland, and vicinity, was distributed.

New shoes were given to needy children for the opening of school and again in the spring. Dresses, skirts and dungarees were purchased to go with the shoes.

No City budget money is available for this work which is directed chiefly towards the border line poor who manage to avoid "pauper status" but need help in order to keep their children in warm clothes and shoes for school.

Gift monies support this work entirely.

Two hundred pairs of shoes were purchased from the proceeds of the Fire Department Christmas "pig".

We are grateful this year to the Elks, Lions and Kiwanis Clubs for setting up a fund to be used jointly with the District Nurse to provide rubbers and boots for school children.

Under the Police Department:

The work consists of family investigations, supervisory care of juveniles, rehabilitation, counseling and close cooperation with the State Probation and Parole Officers for Women.

## POLICE DEPARTMENT

Employees: 11 Full Time Per Capita Cost \$6.16  
5 Part Time

The police department consists of eleven permanent officers; namely, a Chief, Captain, Sergeant, eight patrolmen, and a City Matron. When an occasion arises for the need of more than the regular officers, special officers are called upon for duty with the department.

The first of the year, an additional officer was assigned to the department as a parking meter officer. The purpose of this officer primarily is to maintain and repair parking meters, and to enforce the parking regulations.

The year 1959 saw a labor dispute at the Bonnar-Vawter, Inc., plant located on New County Road, Rockland, Maine. This dispute started in April and continued into June. At the start, this department was called in for the protection of the plant and to protect the employees who continued to work during this dispute. This soon became a problem to have officers working their regular tour of duty and then do extra duty at the plant. The Knox County Sheriff's Department was called upon for assistance at the plant and as the dispute continued on, the Maine State Police were also called upon for assistance. Both departments responded immediately with men and equipment and continued working with this department until the labor dispute was settled. At this time, the Police Chief would like to thank both departments for the splendid cooperation and help during this period.

On August 29, 1959, the police department moved from the old station on Spring Street to a new modern station at the corner of Union and Pleasant Streets, formerly the Railway Express end of the Maine Central Railway Station. The new station consists of a radio and records office, Chief's office, Parking Meter repair room, dark room for photographic purposes, locker room with individual lockers for each officer, and a soundproof room for interrogation and counseling purposes.

During the month of September, 1959, two police officers from this department attended the training school for municipal police officers held at Camp Keyes, Augusta, Maine. This school was held for a four week period, and covered many subjects in the field of police work. Both officers have graduation certificates from this school.

In the field of traffic safety, this department was able to send one officer to the State Police Academy, Augusta, Maine, for a one week course in Traffic Safety Education, sponsored by the Maine Highway Safety Committee. This course covered many fields in pedestrian safety.

Each elementary school has an established schoolboy patrol, supervised by the police department and a teacher from each of the schools. Also, there are four special police officers on duty morning, noon and afternoons at four of the most hazardous crossings.

This year the department experimented with a new type crosswalk which is known as the Zebra crosswalk and recommended in the uniform traffic code. This type crosswalk is visible from a greater distance to the operator of a motor vehicle and much more effective in the field of pedestrian safety than the type previously used.

A new flashing traffic beacon (light) was installed at the intersection of Broadway and Limerock Streets. Also the traffic signal lights located at Broadway and Park Streets were relocated to provide the motoring public with maximum safety at these intersections.

Many safety themes and projects were carried on during the year. These projects were highly successful. A spot map is maintained at the police station and a pin marking each accident is placed on this map to help determine and correct high accident areas.

Due to the members of this department, special officers, schoolboy patrols and the continued cooperation of the motoring



## TRAFFIC ACCIDENT SUMMARY

ROCKLAND, MAINE		YEAR OF 1959					
MONTH OF YEAR	PEDESTRIAN ACCIDENTS	OVER \$100 DAMAGE PER ACCIDENT	UNDER \$100 DAMAGE PER ACCIDENT	HIT + RUN ACCIDENTS	PERSONAL INJURY	TOTAL NUMBER OF ACCIDENTS PER MONTH	TOTAL PROPERTY DAMAGE PER MONTH
JANUARY	0	13	20	0	3	33	\$5,725.00
FEBRUARY	1	4	12	0	3	17	1,685.00
MARCH	2	12	18	6	4	38	10,400.00
APRIL	5	10	11	2	4	28	5,610.00
MAY	1	4	7	0	3	12	2,091.00
JUNE	0	8	6	0	9	14	6,260.00
JULY	2	6	24	5	2	37	3,550.00
AUGUST	4	13	16	5	0	38	4,225.00
SEPTEMBER	0	6	12	3	2	21	1,299.00
OCTOBER	1	5	14	0	2	20	1,665.00
NOVEMBER	1	14	10	1	2	26	4,677.90
DECEMBER	1	15	15	2	5	33	7,312.80
TOTAL FOR YEAR	18	110	165	24	39	317	\$57,500.76

public, this city has completed its eleventh year without a pedestrian fatality and there were no serious pedestrian injuries.

The City Matron (Mrs. Josephine Rice), who works with this department on juvenile problems, female prisoners, and counseling with persons who are having family problems, as in the past years, has been most willing to help no matter what time of day or night. At times when it was late at night and a young girl or lady was picked up as a run-away and was having trouble with her family, Mrs. Rice has taken these girls to her home for the night until the trouble could be ironed out the next day. The City is very fortunate to have a matron of this caliber. Special thanks to the City Matron from this department.

As in the past years, again this department called upon many other departments throughout the State, County and City. The Police Chief would like to take this opportunity to thank each and every one of these departments on behalf of the Rockland Police Department.

A table of arrests, motor vehicle accidents and other activities follows for the fiscal year 1959:

	Arrests	Convictions
Assault	15	7
Burglary	11	9
Driving while Intoxicated	28	20
Drunkenness	130	124
Embezzlement and Fraud	3	2
Forgery and Counterfeiting	3	3
Larceny - Auto	6	6
Larceny - Robbery	19	17
Liquor Law Violations	30	28

Motor Vehicle Violations	186	168
Vagrancy	4	4
Weapons Possession	1	0
Other Offenses	29	23
Total	465	411

## PARKING VIOLATIONS (Tickets)

Number Issued	2637
Number Paid	2022
Number Courtesy - Void - Fail to Report	615

## OTHER ACTIVITIES

Doors Found Unlocked (Business Establishments)	205
Investigations Made	1384

## Sealer of Weights and Measures

Employees: 1 Part Time No Cost

Number of Scales Checked	130
Number of Scales Sealed	124
Number of Scales Adjusted	57
Number of Scales Condemned	6
Number of Gas Pumps Checked	67
Number of Gas Pumps Sealed	67
Number of Gas Pumps Adjusted	11
Number of Gas Pumps Condemned	0
Amount of Fees collected for checking and adjusting: \$142.00.	

## FIRE DEPARTMENT

Employees: 9 Full Time 26 Part Time Per Capita Cost \$6.80

The following is a breakdown of the company runs and operations of the department:

FIRES	
Building	105
Brush and Grass	34
Rubbish near Building	6
Rubbish in Vacant Lots	7
Dumps	7
Miscellaneous Fires Outdoors	6
Vehicles in Street	10
Total Actual Fires	175
Rescue and Emergency	290
Needless Calls	20
False Alarms	13
Drills	38
Accidental Alarms	3
Out of City Alarms	30
Total Alarms Other Than Fires	394
Grand Total of Alarms	569

The following equipment was used on the foregoing operations:

AT FIRES	
3/4 Inch Hose	15,300 Feet
1 1/2 Inch Hose	6,500 Feet
2 1/2 Inch Hose	11,750 Feet
Ladders	1,710 Feet
Salvage Covers	27
Gallons of Water	63,239 Gallons
AT DRILLS	
1 1/2 Inch Hose	2,300 Feet
2 1/2 Inch Hose	6,150 Feet
Ladders	697 Feet
Salvage Covers	3
Gallons of Water	216,545 Gallons
The following number of extinguishers were recharged:	
Soda Acid	268
CO <sub>2</sub>	71
Foam	61
Non-Freeze	15
Dry Chemical	2
Total	417
Radio Talks	12
Other Talks and Lectures	111
To a total of 2,918 people	

Fire losses for the year were \$7,366, giving a per capita loss of .80, which is very low. The public is to be commended for their part in this fine record, as without their vigilance and support, the department could not attain such a record.

Rescue and emergency calls continued to expand while fire calls remained the same as last year.

The Fire Prevention Program is doing a good job and it is hoped that some day the department may have more permanent men and thus an effective inspection program.

The Fire Chief would like to commend the Department Auxiliary for their fine support both financially and socially.

The Chief also wishes, at this time, to express his sincere appreciation to the officers and men of this department for their loyalty and cooperation.

This Department would like to thank the City Manager, City Council, respective Department Heads and their employees, for their fine cooperation throughout the year.

## Building Inspection Division

Employees: 1 Part Time Per Capita Cost \$ .04

The total number of permits issued from January 1, 1959, to December 31, 1959, was 80.

Seven of these were for new single dwellings.

The estimated value of permits issued was as follows:

Residential	\$ 47,000.
Industrial	34,700.
Miscellaneous	123,105

Total \$204,805.

No appeals were given to the Board of Appeals for 1959.

## ENGINEERING DEPARTMENT

Employees: 1 Part Time Per Capita Cost \$ .30

Throughout the year, the engineering department was called upon to perform a variety of engineering services. These varied greatly in scope and detail because they involved projects in planning, engineering and sanitation.

Much time was spent assisting the Public Works Department, the Building Inspector, and the City Manager on problems relating to engineering and planning. Other departments such as the City Attorney, the City Assessor, the Port District, School

Administrative District 5, and the public in general, obtained advice and assistance from time to time.

Below is a resume of some of the services rendered by the engineering department.

Much time was spent with the Chief Engineer of the Maine Central Railroad on design, plan, survey, maps, charts, etc., relative to the new storm sewer and right-of-way over land owned by the Maine Central Railroad that extends from the intersection of their right-of-way and South Main Street and following along the southerly side of the track to Mechanic Street. This project was completed last summer and was well tested during the heavy rains last fall. Plans have been made to improve this drain and other waters now flowing through the center of the city.

Advised the New England Telephone and Telegraph Company on sewers, streets, and drainage problems in connection with the construction of their new building at the intersection of Union and Limerock Streets.

Assisted School Administrative District 5 on problems relating to drainage and sewers on various sites selected for the construction of a new high school.

Discussed soil erosion problems, in connection with the new storm sewer at the south end, with a representative of the Soil Conservation Service.

Installed a large scale topographic map of the City of Rockland in the City Engineer's Office. This map will greatly aid in the planning and growth of the city.

Worked with the Project Engineer of Fay, Spofford, and Thorndike, engineers for the Maine Port Authority, on elevation problems in connection with the construction of additional docking facilities at the Rockland Port District.

Worked on plans for renovating the Maine Central Railroad Station and converting it into a new city hall. Made a survey, established new boundaries, and submitted a description of the property involved to the City Attorney for drawing up a deed in connection with the purchase of this property by the City.

Met with officials of the Department of Economic Development on proposed sites in Rockland and vicinity for industrial development.

Supervised the construction of the new sanitary sewer extending from Talbot Avenue near the brook at Broadway to Center Street. This project cleaned up approximately fifteen sewers which emptied into the brook.

Supervised the construction work on renovating the Railroad Station into City Hall.

Much time was spent with the city interne on sewer and drainage problems in the city.

Submitted a parking plan layout to the Knox County General Hospital of the area in front of the Medical Arts Building.

Attended several meetings with engineers of Fay, Spofford & Thorndike, sanitary engineers of Boston, on an engineering survey for the installation of an interceptor sewer and treatment plant for the City of Rockland. When this survey is complete, it will give us a plan and guide us in any future sewer construction throughout the city. Also, the city will be in a position to benefit greatly from state and federal financial assistance for the construction of an interceptor sewer and treatment plant which would eliminate the pollution of Rockland Harbor, and open it to better recreational and industrial development.

Advised the Camden & Rockland Water Company on street boundaries for the purpose of locating new pipe lines and hydrants throughout the City.

Attended many planning board meetings during the year and met with planning consultants on a proposed master plan for the city that will be completed during the coming year. With the completion of a master plan, future projects such as drainage, sewers, streets, zoning, etc., will follow a definite pattern for the betterment of the city. Also, by having a master plan, the city will be able to enter into a financing program under which the federal government and state would pay a large portion of future large-scale projects.

Spent considerable time in the field with engineers of Fay, Spofford, and Thorndike of Boston on the proposed survey for the interceptor sewer and treatment plant.

Assisted the Public Works Department on the installation of the large pipe just south of Rankin Street and east of Fogg Street.

Spent some time in studying the drainage problems in the central part of the city and formulating a program to be initiated during the coming summer.

Attended several meetings of the directors of The American Public Works Association (Maine Chapter) and seasonal meetings of the Association during the year.

Met with City and State officials relative to a parking survey and a harbor road from Park Street Place to Camden Street.

Made a topographic map of the site for the new high school.

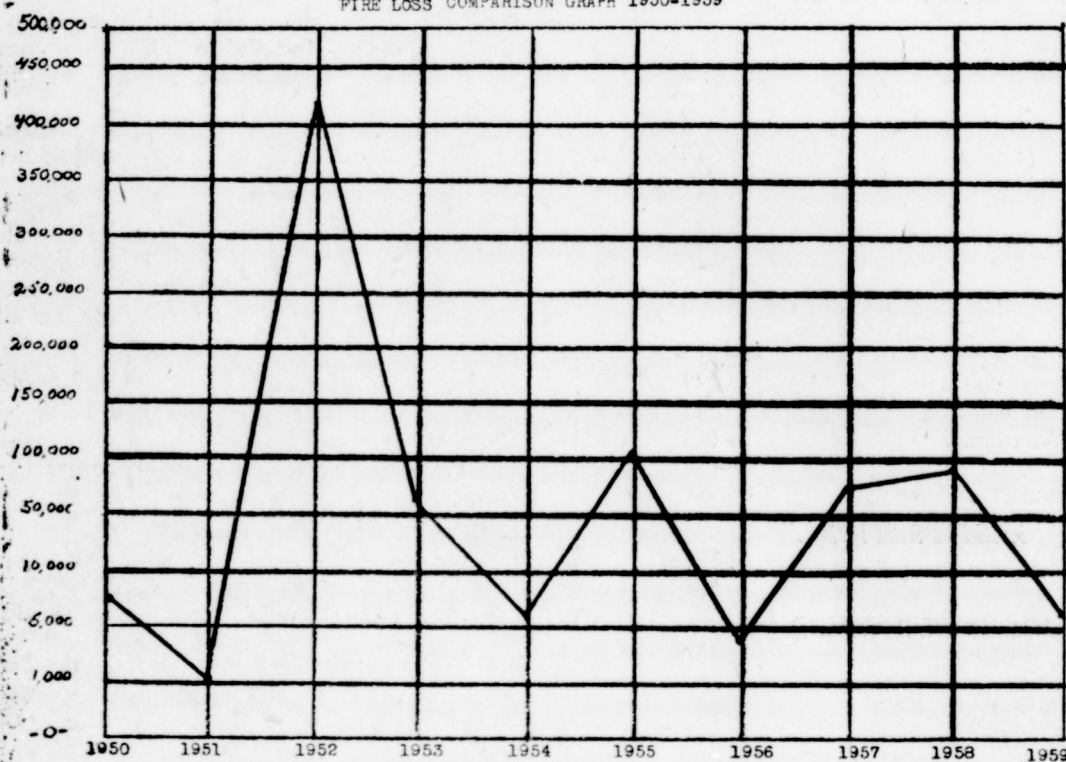
## PLANNING DEPARTMENT

Employees: 1 Part Time Per Capita Cost \$ .30

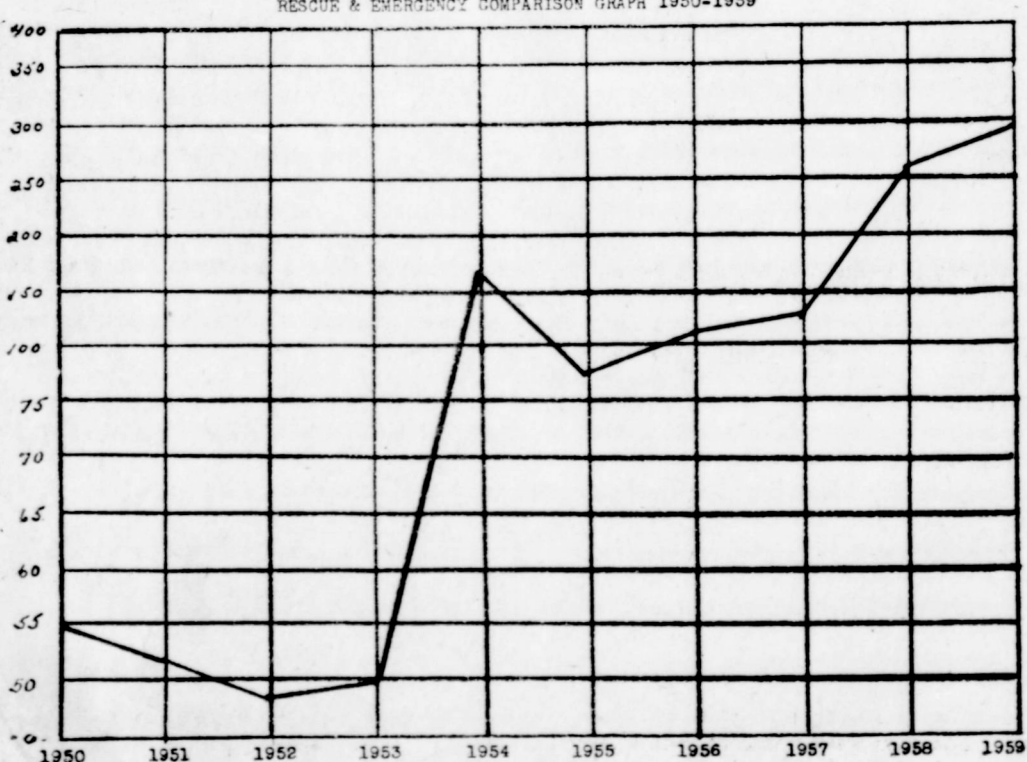
During the past year, the Rockland Planning Commission, consisting of five members appointed by the City Council, has devoted many hours to the consideration of a proposed street or highway along the waterfront of the city. This project was undertaken in the hope that such a highway would be a benefit to the entire City of Rockland, enabling easy access to and through the city from the north and south. It is also believed that such a highway approaching the city from the south, passing along the waterfront area, and connecting with Camden Street, would eliminate the traffic problems of Main Street and create parking areas in the waterfront area adjacent to the highway, thus affording persons an opportunity to find adequate parking in or close to the business district. Such a highway would also beautify the waterfront district, making the area much more attractive to the visiting public.

The Planning Commission has also, in close study with

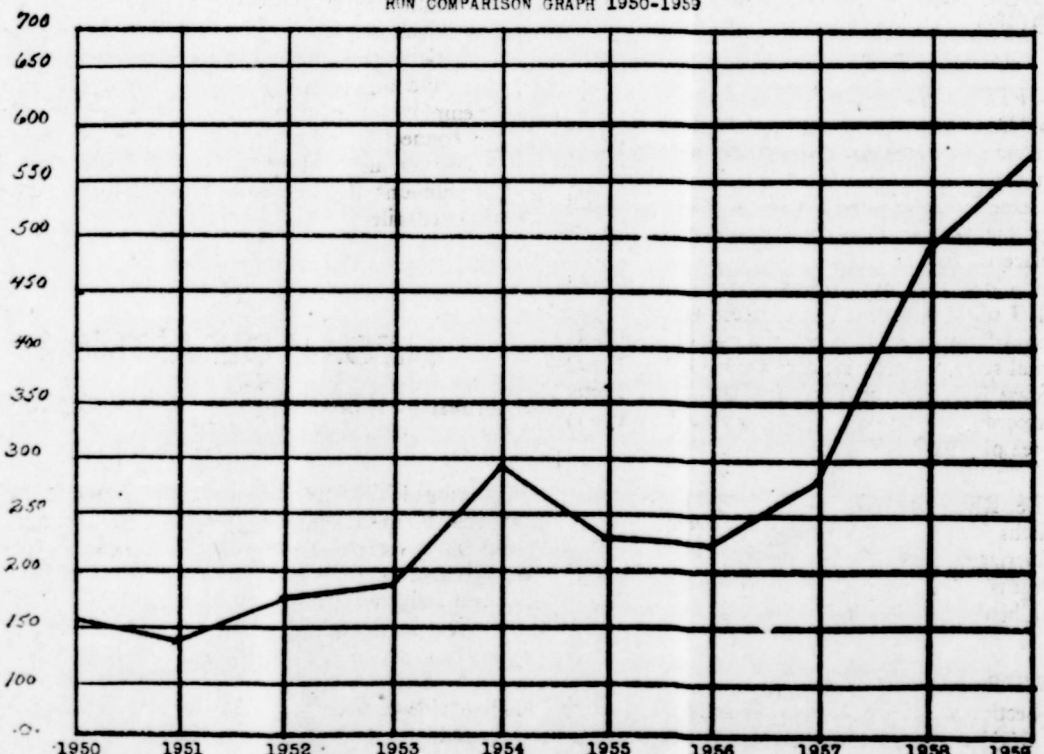
FIRE LOSS COMPARISON GRAPH 1950-1959



RESCUE &amp; EMERGENCY COMPARISON GRAPH 1950-1959



RIN COMPARISON GRAPH 1950-1959





the City Engineer and members of the City Council, spent considerable time in studying the sewerage problem of the city, land use maps, and zoning problems which arise due to economic pressure and changing times.

The Planning Commission, with the assistance of the City Engineer and other personnel of the city government, is undertaking to make a complete study of Rockland's industrial and economic potential. Such a study would encompass streets and highways, sewerage, adequate water supply, land use maps, population trends within the city, and zoning ordinances which would be in the interest of all concerned, and take into consideration the future industrial and cultural growth of the city.

## DEPARTMENT OF ECONOMIC DEVELOPMENT

By act of the City Council, a Department of Economic Development was created at the end of 1958. An advisory board was appointed consisting of E. Clifford Ladd, Sidney Cullen, Bertram Snow, Wendell Hadlock, and Nathan Bard. The personnel, unchanged from a voluntary group appointed the previous year, was soon changed with the resignation of Nathan Bard, a non-resident. He was replaced by Peter Sulidich, present Chairman of the Board.

The primary objective of the department lies in the field of industrial development, in the creation of new wealth to the community. Other areas of study and promotion are, commercial, residential, and recreational facilities.

A brochure of the City of Rockland was prepared, with pictorial presentations, and sheets of financial assistance, as offered by the Maine Industrial Building Authority and Knox Industries, Inc., were added to the descriptive literature. Supplies of these materials were sent, during the year, to the State Department of Economic Development, Maine Industrial Building Authority, Knox Industries, Inc., the Rockland Chamber of Commerce, a few hundred members of the Society of Industrial Realtors, and to selected industries.

The department has studied the harbor facilities very thoroughly to determine the feasibility of waterfront development. It has studied the types of industries to be contacted which could best utilize our natural resources. It has met with representatives of various industries which have indicated a possible location in Rockland. It has studied possible sites for industry with the constant help of the City Engineer. It supported, in State Legislative Committee hearing, the application for a rail line charter for a prospective cement industry.

The department has attended several meetings of the Planning Board.

## RECORDS DEPARTMENT

Employees: 2 Full Time Per Capita Cost \$1.83

### CITY COUNCIL MEETINGS

The legislative body has been described as the "heart beat" of government whether at the National, State, or local level. The City Council is the legislative body at the local level. In Council meetings, laws are enacted, policies established, authority given for various administrative procedures, etc. Thus the structure of administration is formed and creates a guide for a sound business organization to improve the civic and economic condition of the municipality.

The past year necessitated extra meetings and in all, 23 such meetings were held in addition to the monthly meetings on the second Monday of each month.

12 REGULAR 23 SPECIAL 7 HEARINGS

### PUBLICATIONS

Publications are notices in the local paper notifying citizens of public hearings, elections, etc. Such notices are an expense to the City as they are in the form of a paid advertisement but are necessary to legalize the acts of the legislative body. Publications during the past fiscal year were as follows:

4 ELECTION NOTICES 14 ORDINANCES  
16 LEGAL NOTICES 2 OTHERS

### CITY LICENSES AND PERMITS

Local licenses are not originally determined by the City but are established by State Law and incorporated into the local ordinances. When the State Legislative specifies certain businesses to be licensed, the municipality must conform to the State Law. Pin Ball Machines now must be licensed and Going-Out of Business Sales is a fairly recent addition to State laws.

323 ISSUED FEES COLLECTED \$2135.50

### STATE LICENSES

A new State license was introduced in 1959 and Municipal Clerks were issuing agents for the State. This license was a Christmas Tree Certificate of Registration required by the State Forestry Department for the sale and transportation of Christmas trees or evergreen boughs. The fee for such license is \$1.25, of which 25 cents is retained by the City.

Hunting and fishing licenses and dog licenses are issued as usual and returns made monthly to the respective State departments.

DOG LICENSES 814  
FORESTRY 24  
HUNTING AND FISHING 1748  
MARRIAGES 101

### RECORDINGS - VITAL STATISTICS

Receiving, recording, and preserving vital statistics records has become systematized and improved through the years. Today it is a simple matter to procure a copy of birth, marriage, or death record. For example: not only is a birth record recorded at the place of origin but also at the place of residence of parents if different than place of birth.

In the case of a death record, copies must be made and forwarded to the clerk of the town or city of place of burial, and place of residence of deceased if other than place of death. In all cases of all vital statistics records, copies must be made and forwarded to the State Registrar of Vital Statistics in Augusta. Copies of all records may be obtained at any of these places of recording for a fee of \$1.00.

CERTIFICATES RECORDED COPIES ISSUED  
410 Births 578  
135 Marriages  
186 Deaths  
4 Stillbirths

### DOCUMENTARY RECORDINGS

Chapter 178, Section 2, of the Revised Statutes of Maine, 1954, provides for the recording of mortgages of personal property mortgages, and any and all instruments required to be recorded in municipal clerks' offices in suitable books. The date of time received shall be affixed and the book and page number

where recorded. During the past year, such recordings averaged about 165 per month. These recordings are subject to public inspection and are often used as court evidence and credit rating.

CONTRACTS RECORDED 1984  
FEES COLLECTED \$1735.25

### CASH

Cash balances are made in the Records Department at the end of each month and all fees collected are deposited with the City Treasurer. Amounts due the State from fees collected are made by City Check direct to the Treasurer of State.

STATE FEES \$7019.40 CITY FEES \$5384.00  
TOTAL CASH RECEIPTS \$12,403.40

### REGISTRATIONS AND ELECTIONS

All elections during the past fiscal year were conducted by written ballots in the usual manner. Ward divisions were changed from seven to three, and the December City Election was the first election conducted in three wards.

By ordinance amendment, the Council authorized the use of voting machines and plans were made for the purchase of six machines, two for each ward.

## PUBLIC WORKS DEPARTMENT

Employees: 14 Full Time Per Capita Cost \$14.99  
2 Part Time

In January, the work of this department was mostly snow removal, which consists of plowing all streets and sidewalks and taking snow from Main, Union, Park and Limerock Streets. Sanding and salting of streets was done when necessary; also, sanding runways at airport.

In February, the department continued to plow snow and also did a lot of maintenance work. Sewers were rodded and repaired, storm drains and culverts were thawed and salted. Tarpatch was mixed and patching was done when snow was not on the ground.

March was an exceptionally busy month. We had the worst storms of the year. All bridges were checked and repaired, more culverts were thawed, clearing and salting basins was continued.

April was spent repairing the winter's damage to the streets. This meant a lot of gravel patching, tarpatching, scraping and ditching streets, cleaning ditches, cleaning brooks, rebuilding and resetting catch basins, exploring and rodding sewers, repairing and setting out street signs.

Clean Up Week took place in May. This proposed week usually turns out to be the whole month. Grass was burned on Upper Park Street. Curbing was taken out and the sidewalk patched by the I. G. A. Store. The new City Hall was purchased, which supplied jobs of plumbing, tearing out old partitions, etc., for the department. Lawns and parks were raked and mowed and this work was continued throughout the summer. Work was continued on Center Street sewer from last Fall. Traffic lines were painted for the Police Department.

June was a constructive month. Lindsey and Elm Streets were hot-topped by Lane Construction Corporation. A sewer drain was dug on Washington Street. Limerock Street was patched with hot top.

Annual tarring was done in July. This covers approximately twenty miles of streets each year. Mowing lawns and patching streets continued. Center Street sewer was completed.

The Lobster Festival was set up during the month of August. Brooks were cleaned. Installation of a storm drain was started on Thomaston Street and at the junction of Rankin and Fogg Streets, the bottleneck in the brook was removed. These projects were done to eliminate flood conditions. Both have worked out very satisfactory. Cots and a complete Civil Defense Hospital Unit were unloaded and stored at the Airport Armory for use when needed.

September and October meant the department's work turned towards winter again. Streets were continually patched, bridges were once again repaired, culverts and basins were cleared, sewers were rodded and cleaned. Buildings were winterized. Winter salt and sand was stocked. The last mowing and raking was done for the season. Thomaston Street, Broadway, and the City Hall yard were tarred. Leaves were gathered, which is a courtesy that is extended each Fall.

In November and December, the department went back to salting and sanding, plowing streets, and the start of the winter night shift. This means two men at the garage on call all night to take care of anything that might arise.

Rubbish removal from all buildings was done twice weekly. Equipment was repaired and maintained by the garage mechanic. The City Dump was manned daily. Street sweeping was done daily when weather permitted. All buildings were maintained by the department's maintenance man.

This year, the department purchased one Chevrolet dump truck, one Chevrolet pickup truck, one backhoe, one stake truck from Civil Defense, and two power steering units. The steam boiler to thaw culverts was made from an old boiler.

By working together with all other departments, much of this work was made easier.

## PERSONNEL DEPARTMENT

Employees: 2 Part Time No Cost

The City Manager is also head of the Personnel Department. Assisted by his secretary, he keeps individual personnel records of each employee of the City of Rockland.

The Personnel Examining Board gives recommendations, guidance, and advice on eligibles for appointment. Each prospective employee must appear before this Board for an oral interview in connection with the position for which he is applying.

Each time an employee is hired or leaves the City's employ, a certain amount of paper work must be done in connection with his personnel file.

## LEGAL DEPARTMENT

Employees: 1 Part Time Per Capita Cost \$ .13

During 1959, the City Attorney attended twelve regular City Council meetings and many special meetings. A number of ordinances were prepared, both original and amendments. He also prepared a number of deeds, legal notices, letters, etc. Approximately two days were spent on the Camden & Rockland Water Company hearing, and new Airport leases were prepared.

Having served for the past fifteen years, City Attorney Jerome C. Burrows resigned that position on December 31. He found that he could not give the work the sufficient time he felt it required.

The City appreciates the efforts spent and time put in on the work of the City Attorney and wishes at this time to publicly thank him.

## HARBOR AND WATERFRONT DEPARTMENT

Employee: 1 Part Time No Cost

During the period of 1959, this department has seen the work on the new harbor channels brought to a completion by the U. S. Government. These channels have been marked by the Coast Guard with channel bouys. With the Rockland Port District dock in operation, these new channels have been well used not only by the local island ferries but by the larger visiting yachts and commercial craft. This past summer, the Maine Port Authority has leased the facilities of the Rockland Port District to be used as the mainland terminal for the ferry services with North Haven and Vinalhaven Islands which was authorized as a State service by legislation. A permit was granted by this City to the Maine Port Authority to make changes in the Port District dock also for an additional and larger loading slip to fit the new and larger ferry boats which will be built and put into service next year.

It is gratifying to note that the firm of Alton Prock and Sons, marine contractors, have opened a Main Street office and is using this harbor as a base of operations for its fleet. This firm completed the above mentioned channels for the government by drilling and blasting out ledges and then dredged the channels to required depth.

Another new firm, SEA-PRO, Inc., has established itself along the waterfront north of the Lime Company dock and is a welcome marine industry added to our harbor front.

The merger of the Algin Corporation at Crockett's Point with another out-of-state company has brought about a very large expansion program which has been carried out on the waterfront.

The twenty-six year old wooden float "Captain John Bennett" was replaced by the first of two new steel and wooden floats authorized to be built. This first section was put into service during the late summer and was named in honor of Commodore Joshua N. Southard for his long and devoted interest in promoting yachting for the Port of Rockland during the past years. The second float section will be completed and installed for the 1960 summer season. A total of nine guest moorings have been placed off the public landing by the City for use as guest moorings for the visiting trade. The Public Landing area has drawn much interest in the past. With the replacement of the old floats with a larger system of floats and other facilities planned for, this area will grow with the interest of the many people who use this area.

The commercial activity along our waterfront and the use of the harbor has been just about the same as the year before.

Acknowledgement of appreciation, at this time, goes to the many waterfront businesses and to the local government and other agencies for their helpful services in many ways in connection with the harbor.

## LIBRARY DEPARTMENT

Employees: 4 Full Time Per Capita Cost \$1.24

The year 1959 has seen a further improvement in the circulation of books and magazines at the Rockland Public Library and an increase in reference and research work done by students.

Mrs. Dorris B. Sleeper joined the staff as Children's Librarian in September.

National Library Week was highlighted with Open House and a Tea arranged by the Advisory Board. This affair had the largest attendance ever recorded at the Library (250). The speakers of the afternoon were Maine authors Elisabeth Ogilvie and Dorothy Simpson.

Library instruction was given to classes from the fourth grade level through high school.

School Libraries of city schools and outlying districts totaled 9,528 volumes.

The Methebesec Club held their meeting in November in the Children's Room with Miss Rita Smith of Thomaston as guest speaker.

We took advantage of the "weeding" service which the Maine State Library offers to Public Libraries and on November 19th Miss Mary Goodrich, Extension Librarian, and Mrs. Marjorie Searcy, Children's Specialist, examined our Bookstock. They discarded 200 non-fiction adult books and 300 non-fiction titles in the Juvenile Department. Their report was especially gratifying.

### CIRCULATION

Adult Fiction 29,959  
Adult Non-fiction 14,078  
Juvenile Fiction 17,286  
Juvenile Non-fiction 4,658

Total Circulation 65,981

### REGISTRATION

Adult 2,721  
Juvenile 855

### BOOKS PURCHASED

Adult Fiction 277  
Adult Non-fiction 249  
Juvenile Fiction 152  
Juvenile Non-fiction 104

Total Books Purchased 782

Books Discarded 457  
Bookstock 26,023  
Fines Deposited \$1,067.27  
Books borrowed from Bangor 118  
School Libraries 9,528  
Hospital Libraries 1,160  
Books Rebound 35  
Gifts of Money \$72.00  
Gifts of Books 120

## RECREATION DEPARTMENT

Employees: 2 Full Time Per Capita Cost \$1.83  
6 Part Time

### SUMMER PROGRAM

The summer program included North and South School playgrounds and the swimming program at Chickawaukie Lake. During the summer, four boys Little League teams were formed, two on each playground. Each team played ten games. During the last week of the program, two All-Star teams were formed and played the best three out of four. North School won and received trophies.

The recreation department sponsored a Babe Ruth League team in the Linnox League. The team finished second with a nine and three record. The team was coached by Sam Glover.

Much needed new equipment had to be added to the playgrounds this year, including banball sets, deck tennis rings, olympic ring sets, rubber quito sets, takraw sets, croquet sets,

tether ball sets with saddles, stilts, peteka rio, plastic bats and balls, and pogo sticks. The croquet sets proved to be very popular.

At the lake, the float was rebuilt, the dock extended, more sand put on the beach, and a slide installed. The slide has added greatly to the program of the department.

Arts and crafts were held in the afternoon at both playgrounds and consisted of making metal ash trays, teaching the children to make baskets from mat sticks, and pyro-lace was very popular. The children made lanyards, key chains, bolo ties and belts from the pyro-lace. This project was extended an extra week because of its success.

### Number of Different Children Enrolled at the Playgrounds

North School 95  
South School 93  
Average for both over six week program 28

The Recreation Department went to Beaver Lodge and supervised the games and waterfront for the Cement Plant picnic. There were 500 people and the day proved enjoyable and successful for all.

Next year, the Director would like to see the whole program at the lake if land can be made available. This would do away with the wading pool problem and could help in keeping the children away from the schools. This would be a supervised play and swim area during certain hours of the day.

### FALL AND WINTER PROGRAM

The indoor recreation program at the Community Building has been in operation for the past four and one-half months.

Eight intermural basketball teams, comprised of boys of high school age, were organized and scheduled in addition to six teams of seventh and eighth grade pupils and six teams of fifth and sixth grade students. Approximately 200 boys participated. Free play periods were available in the gym, proving very popular.

Golfing instructions were made available to any teenage boy or girl desiring them.

Pool and Ping-pong tournaments were held in the game room and tables were made available to students not participating in the tournaments.

The Juke Box room was open daily with many in attendance.

Teen Council meetings were held with the most recent one bringing about a record hop each Saturday evening for the benefit of the Scholarship fund.

Record Hops held in the gym Friday and Saturday nights by different organizations and clubs besides Teen Council proved very successful with 200-300 students attending.

Adult Volley Ball was also added to the recreation program, being held once a week, in the evening.

The average attendance has been 250 to 300 pupils daily.

### COMMUNITY BUILDING

#### Work Completed in 1959

Repairing and painting outside finish doors, windows, etc. Sanding, repairing, and painting approximately two-thirds of the outside.

Washed and painted woodwork and bottom of walls in Tower Room. Also refinished floor with one coat of seal and two coats of Gyp Finish.

Main Corridor — Washed and painted woodwork and walls. Washed, applied one coat of Gyp Seal, and one coat of Gym Finish to brick walls. Applied one coat of Gyp Seal and two coats of Gym Finish to Corridor floors.

Office No. 1 — Washed and painted walls and floors.

Office No. 2 — Moved wall approximately three or four feet, cut a window in brick wall to overlook the Gym and cut a window in corridor wall, and one in office wall. Also painted this office.

District Nursing Rooms — Washed walls and wood work. Refinished floors with one coat of Gym Seal and two coats of Gym Finish.

West Room — Refinished floors in room and corridor.

Gym — Patched floor with approximately 200 pieces of flooring. Placed plywood over front of stage. Patched walls and doors alongside. Painted and refinished floor.

Shower Rooms — Installed new showers, shower curtains, and a new hot water system. Painted shower room with one coat of paint.

Stage — Refinished floor. Painted approximately six feet high on the walls and doors. Installed a driving net for Golf Range.

Juke Box Room, Game Room, and Kitchen — Painted walls and floors. Repaired Ping-pong and Pool Tables.

Chairs — Repaired and varnished approximately 250. Bowling Alleys — Refinished alleys and floors. Washed walls and woodwork. Overhauled and tightened all parts of Pin Setters.

#### Work That Should Be Accomplished in 1960

##### To Outside of Building

Drain by the back kitchen door.  
Drain pipe by the Bowling Alley on east side.  
Cracks in cement should be patched.  
Finish painting outside.  
Finish patching roof (this has been started).  
Angle irons made and put on two Tower Room doors.

#### Work That Should Be Accomplished in 1960

##### To Inside of Building

Gym — One-quarter Inch Plywood should be placed over matching boards to stiffen doors where chairs go.  
Paint brick and walls as per plan submitted by the Glidden Company.

Patch and refinish gym floor.  
Shower Rooms — Finish three walls about six feet high with cement blocks and paint.

Women's Rest Room — Cut door in wall with new door and frame work to rest room on other side of wall for more room. (This is needed very much.)

Wash, paint, and refinish throughout the building.

Stage curtains should go to the cleaners.

The large double doors on stage should be fixed to keep out cold and weather.

Heating system, as talked about last year, should be fixed to control heat in Gym and throughout the building.

#### General Income

Bowling from 1-2-59 to 12-31-59 \$5,010.00  
Rent received for Tower Room 1-7-59 to 12-29-59 589.50  
Rent received for West Room 1-14-59 to 11-10-59 235.00  
Rent received for Gym 2-20-59 to 12-22-59 742.00  
District Nursing from January to November 550.00

Total General Income \$7,326.50

#### Miscellaneous Income

N. E. Tel. & Tel. Co. Pay Booth —  
March to December \$ 27.85  
Ping-pong Machine 20.70  
Metered Music Corp. — Candy Machines 24.27  
Coca-Cola Machines — 1st, 2nd and 3rd Quarters 95.15  
Golf Registration Fees from 1-27-59 to 3-5-59 76.00  
Membership Cards — 473 from October to December 118.25

Total Miscellaneous Income \$ 362.22

Total General Income \$7,326.50

Total Miscellaneous Income 362.22

Total Income \$7,688.72



## SCHOOL DEPARTMENT

Employees: 93 Janitors: 10 Supervision: 1  
Per Capita Cost \$42.03

This is the first report to the citizens of School Administrative District No. 5, comprising the municipalities of Owls Head, Rockland and South Thomaston, concerning the condition and progress of the District.

On November 24, 1958, District No. 5 was officially organized and from that date on was responsible for the total operation of all schools within the District. The Board of Directors, with 13 members, replaced the former school board of each municipality. The Board of Directors elected was as follows:

Owls Head	Rockland	South Thomaston
Bradford Adams	Russell Abbott	Marion Colby
Lloyd Painter	C. Maxwell Ames	Allard Pierce
Elisabeth Walker	Sebastian Groder	Melton Sturgess
	A. Alan Grossman	
	Harold Kaler	
	Irving McConchie	
	William Karl	

The objectives of the Board of Directors during the first year of operation has been to consolidate the school systems of the three municipalities into one working unit and to operate them as effectively and efficiently as possible and, secondly, to carry forward the plans of the original study group for the district and establish a Junior High School after the construction of a Senior High School. The District has been working toward these ends.

The total enrollment in the District schools on April 1, 1959, was 2,383 as compared with 2,480 in September of this year which is an increase of slightly over 4 per cent. While it appears as if the grade enrollment has reached a plateau, the enrollment will continue to increase as the large grades progress through High School.

The enrollment by grades on December 31, 1959, was as follows:

Grade	S-P	1	2	3	4	5	6	7	8	9	10	11	12	Total
Elementary	231	199	219	190	188	202	196	216	195					1,836
High School										160	170	165	123	618
Total		231	199	219	190	188	202	196	216	195	160	170	165	2,454

It is obvious from the above figures that the facilities at the High School are becoming over taxed and will be more so in the future by additional pupils.

## HIGH SCHOOL PLANNING

An architect has been hired, a lot selected, and the Board of Directors are in the process of developing preliminary plans for a new High School. During next year, the voters of the district will be asked to approve a bond issue for the construction. If the bond issue is approved and the plans are completed, this will enable District No. 5 to have an adequate plant to house an accredited High School program. This we believe will give us a curriculum which will be second to none in the state.

## FINANCES

The District Directors have contracted with the State Department of Audit to audit the District Finances. This has been done and the District is awaiting the report. Following is a summary of the operating costs of the District.

Receipts	
Balance - 1958	\$12,799.10
Owls Head	35,881.13
Rockland	386,635.62
South Thomaston	17,742.45
Tuition	8,579.25
State of Maine	171,456.73
Miscellaneous	5,314.28
Rockland School District	5,372.36
Loan Capital Outlay	7,200.00
Total Receipts	\$650,980.92
Expenditures	
Administration	\$ 17,896.07
Instructional	444,551.73
Health	1,883.00
Transportation	21,087.37
Operation of Plant	64,407.98
Maintenance of Plant	7,281.04
Equipment	3,837.06
Fixed Charges	6,839.72
Rental	1,000.00
Interest on Current Loans	4,090.15
Capital Outlay	8,280.14
Transfers and Tuition	2,694.80
Debt Service	45,014.83
Overpayment on Subsidy	3,055.80
Total Expenditures	\$631,919.69
Net Balance to 1960	\$ 19,061.23

## CONCLUSION

It has been a challenging experience to see School Administrative District No. 5 evolve from an idea to a reality and to play a part in its organization and progress. Many, many people and organizations have put much effort and time into the creation of the District. The Board of Directors and the Superintendent hope that they can live up to the expectations of these people and organizations in providing schools for the boys and girls that all will have pride in and know that the communities' children are receiving an education which will prepare them for life in this Space Age.

The Superintendent considers it a privilege to be the executive officer of the Board of Directors and to have an opportunity to work with students, faculties, citizens, and officials of these three communities. He wishes to express his appreciation for their co-operation, understanding and help in carrying out his responsibilities as Superintendent of the Public Schools.

## STATE OF MAINE

## STATE DEPARTMENT OF AUDIT

Augusta

May 23, 1960

Members of the City Council  
and Manager of the  
City of Rockland, Maine  
Gentlemen:

In accordance with Chapter 90-A, Revised Statutes of 1954, an audit has been conducted of the financial records of the City of Rockland for the fiscal year ended December 31, 1959. The examination was made in accordance with generally accepted auditing standards that pertain to governmental accounting and was conducted by Auditors S. M. Emery and C. G. Hawes of the State Department of Audit.

The audit analysis was on a basis consistent with that of the preceding year, and included such tests of the accounting records and other auditing procedures as were considered necessary in the circumstances. The financial and statistical sections, incorporated in this report, present the results of the City's financial operations for the period indicated.

Respectfully submitted,

MICHAEL A. NAPOLITANO  
State Auditor

## COMMENTS

## CITY OF ROCKLAND

January 1, 1959, to December 31, 1959

The financial records maintained by the various officers of the City of Rockland have been audited for the fiscal year ended December 31, 1959. The audit included a review of cash transactions and an analysis of available funds and expenditures.

The operating results for the municipal year showed that actual revenues exceeded estimates by \$10,711.92 and that a net overdraft of \$4,998.97 occurred in the departmental operating accounts. The excess of actual revenue over estimate was reflected principally in the excise tax account. An overdraft in the public works maintenance account and the overlay were the major items contributing to the net departmental overdraft. The city council authorized the transfer from one department to another as is necessary to balance departmental accounts. These transfers have been omitted in this report for clarity purposes and all balances are lapsed directly to the unappropriated surplus account with the same resulting effect. Comments are presented with respect to the financial statements and the scope of audit.

## FINANCIAL STATEMENTS

**ASSETS** . . . The general fund cash balance of \$18,629.12 was verified by reconciliation of statements furnished by the depositories and by count of petty cash. The cash was segregated as follows: general fund, \$15,694.99; agency fund, \$2,734.13; and petty cash, \$200.00. Accounts receivable amounted to \$5,700.44 and contained for the most part amounts due from the State for state aid road construction and welfare accounts.

Taxes receivable totaled \$77,027.27 at the close of the year. Current year uncollected taxes amounted to \$74,854.73 and the remaining balance of \$2,172.54 represented unpaid accounts dating from 1956. Other general fund assets included tax liens of \$14,462.37, tax acquired property amounting to \$2,373.47 and sewer assessments of \$552.29.

The deferred overexpenditure of \$19,230.89 was incurred in connection with the purchase and renovation of the Maine Central Railroad Building as a new City Hall. This amount, which was in excess of funds provided for the purpose, has been deferred to await council attention in the ensuing year.

**LIABILITIES** . . . Recorded liabilities of \$10,275.00 at December 31, 1959, were comprised of a short term note of \$8,000.00 and matured bond coupons totaling \$2,275.00. The note obligation was issued to provide funds for the purchase of highway equipment. The bond coupons which matured in 1945 to 1951 are payable upon presentation at the office of the city treasurer.

**RESERVES** . . . The appropriation accounts showed an unexpended balance of \$389.81 in the Sea View Cemetery account carried forward to the ensuing year. Withholding taxes and social security deductions of \$1,997.29 and \$736.84 respectively were due the Internal Revenue Service at the year end.

EXHIBIT A

## CITY OF ROCKLAND

## COMPARATIVE BALANCE SHEET

## GENERAL FUND

December 31, 1959		December 31, 1958		December 31, 1959		December 31, 1958	
Assets		Liabilities, Reserves and Surplus		Liabilities, Reserves and Surplus		Liabilities, Reserves and Surplus	
<b>Cash on Hand and In Banks:</b>		<b>Liabilities:</b>		<b>Liabilities:</b>		<b>Liabilities:</b>	
General Fund	\$15,694.99	Notes Payable	\$ 8,000.00	Notes Payable	\$ 8,000.00	Notes Payable	\$ 8,000.00
Agency Fund	2,734.13	Bond Coupons Matured		Bond Coupons Matured		Bond Coupons Matured	
Petty Cash	200.00	Not Presented for Payment	2,275.00	Not Presented for Payment	2,275.00	Not Presented for Payment	2,275.00
		Total Liabilities	\$ 10,275.00	Total Liabilities	\$ 10,275.00	Total Liabilities	\$ 10,275.00
Accounts Receivable	\$ 5,700.44	Reserves:		Reserves:		Reserves:	
Sewer Assessments	552.29	Departmental		Departmental		Departmental	
Taxes Receivable	77,027.27	Balances Carried (Exhibit D)	889.81	Balances Carried (Exhibit D)	889.81	Balances Carried (Exhibit D)	889.81
Tax Liens	14,462.37	Due Governmental Agencies	2,734.13	Due Governmental Agencies	2,734.13	Due Governmental Agencies	2,734.13
Tax Acquired Property	2,373.47	Total Reserves	3,623.94	Total Reserves	3,623.94	Total Reserves	3,623.94
Tax Lien Charges	87.17	Surplus:		Surplus:		Surplus:	
Deferred Overexpenditure - New City Hall	19,230.89	Unappropriated (Exhibit C)	124,164.08	Unappropriated (Exhibit C)	124,164.08	Unappropriated (Exhibit C)	124,164.08
TOTAL	\$138,063.02	TOTAL	\$138,063.02	TOTAL	\$138,063.02	TOTAL	\$138,063.02
DEBT FUND		Liabilities		Liabilities		Liabilities	
<b>Assets</b>		<b>Liabilities</b>		<b>Liabilities</b>		<b>Liabilities</b>	
Time Deposit	\$ 5,217.67	Bonds Payable	\$ 82,000.00	Bonds Payable	\$ 82,000.00	Bonds Payable	\$ 82,000.00
Amount To Be Retired By Bond Issue	60,000.00	Bonds Matured Not Presented for Payment	10,000.00	Bonds Matured Not Presented for Payment	10,000.00	Bonds Matured Not Presented for Payment	10,000.00
Amount Necessary To Retire Debt from Future Revenue	86,782.33	Note Payable	60,000.00	Note Payable	60,000.00	Note Payable	60,000.00
TOTAL	\$152,000.00	TOTAL	\$152,000.00	TOTAL	\$152,000.00	TOTAL	\$152,000.00
TRUST AND RESERVE FUNDS		Liabilities		Liabilities		Liabilities	
<b>Assets</b>		<b>Liabilities</b>		<b>Liabilities</b>		<b>Liabilities</b>	
Trust Funds:		Trust Funds:		Trust Funds:		Trust Funds:	
Time Deposits	\$15,553.97	Principals	\$74,455.67	Principals	\$74,455.67	Principals	\$74,455.67
Securities	63,518.31	Unexpended Income	4,616.61	Unexpended Income	4,616.61	Unexpended Income	4,616.61
Total Trust Funds	\$ 79,072.28	Total Trust Funds	\$ 79,072.28	Total Trust Funds	\$ 79,072.28	Total Trust Funds	\$ 79,072.28
Capital Reserve Fund:		Capital Reserve Fund:		Capital Reserve Fund:		Capital Reserve Fund:	
Time Deposit	743.54	Fire Equipment	743.54	Fire Equipment	743.54	Fire Equipment	743.54
TOTAL	\$ 79,815.82	TOTAL	\$ 79,815.82	TOTAL	\$ 79,815.82	TOTAL	\$ 79,815.82

**SURPLUS** . . . The unappropriated surplus amounted to \$124,164.08, an increase of \$7,260.11 for the year. The change was occasioned principally by the actual revenue over estimate less the net departmental overdraft.

**DEBT FUND** . . . The debt fund, incorporated in the balance sheet as a separate fund, reflects outstanding notes of \$60,000.00 and serial bonds of \$82,000.00 which are to be retired from future revenue. In addition, bonds totaling \$10,000.00 that matured in 1951 have not been presented for payment.

**TRUST AND RESERVE FUNDS** . . . Trust fund principals totaled \$74,455.67 and unexpended income amounted to \$4,616.61 at the year end. The funds are invested in U. S. Bonds and other securities valued at \$63,518.31 and time deposits of \$15,553.97 in the Rockland Savings Bank, Rockland, Maine.

The capital reserve fund for fire equipment amounted to \$743.54 and was on deposit in the Rockland Savings Bank, Rockland, Maine. During the current year \$16,000.00 of the fund was used for new equipment.

**DEPARTMENTAL ACCOUNTS** . . . Appropriations for departmental operations totaled \$943,246.44, a decrease of \$110,958.44 as compared with the preceding year. A smaller appropriation for educational purposes was the major factor contributing to the decrease. Although the appropriations decreased \$110,958.44, the amount raised by taxation increased \$25,806.06 over the previous year. The difference of \$136,764.50 was provided for by an increase in estimated revenue and surplus transfer amounts.

## SCOPE OF AUDIT

The system of internal control was reviewed as pertained to the handling of cash and other matters of financial concern. Count of cash was made and reconciled with current receipts and/or petty cash funds.

Cash accounts were verified by reconciliation of bank statements furnished by the depositories or by direct bank confirmation. External verifications were utilized, on a test basis, to determine the correctness of recorded assets and liabilities.

Trust, reserve and sinking fund transactions were reviewed. Investments were verified by physical inspection and/or bank confirmation. An analysis was made of receipts and deposits as well as expenditures and negotiated checks. Vouchers, payrolls and canceled checks were examined for a selected period. Canceled notes, bonds and coupons applicable to the current period were examined. Excise tax collections were verified with the copies of the receipts retained by the collector. Surety bond coverage was reviewed.

The city charter and minutes of council meetings, as pertained to financial administration, were reviewed. The city clerk's records of licenses and fees were checked. In our opinion, subject to the foregoing comments, the accompanying statements and supporting information present fairly the financial position of the city at December 31, 1959, and the results of its operations for the year then ended.

## WHERE TO CALL

## FOR CITY SERVICES

For	Call
FIRE	LYric 4-4131
POLICE	LYric 4-8431
HOSPITAL	LYric 4-5511
AMBULANCE	LYric 4-4212
	LYric 4-5959
	LYric 4-4411

For Information on	Call	Telephone
ADMINISTRATION	City Manager	LYric 4-8431
ASSESSMENT	Assessor	4-8431
BILLS or ACCOUNTS	Accountant	4-8431
BIRTH CERTIFICATES	City Clerk	4-8431
BUILDING PERMITS	City Clerk	4-8431
BURIAL PERMITS	City Clerk	4-8431
CITY FARM	City Farm Supt.	4-5668
CITY PHYSICIAN	Dr. Oram Lawry, Jr.	4-5845
CHattel MORTGAGES	City Clerk	4-8431
DEATH CERTIFICATES	City Clerk	4-8431
DOG LICENSES	City Clerk	4-8431
ELECTIONS and REGISTRATION	City Clerk	4-8431
FIRE DEPARTMENT—EMERGENCY ONLY	Fire Dept.	4-4131
FIRE PERMITS	Fire Dept.	4-8431
FISHING and HUNTING LICENSES	City Clerk	4-8431
HEALTH and SANITATION	Dr. Lawry, Jr.	4-5845
HIGH SCHOOL	Principal	4-4560
LIBRARY	Public Library	4-8431
MARRIAGE CERTIFICATES	City Clerk	4-8431
McLain SCHOOL	Principal	4-5030
MILK INSPECTION	Dairy Products Inspector	4-4121
NORTH SCHOOL	Principal	4-5909
ORDINANCES	City Clerk	4-8431
PARKS	Public Works Supt.	4-8431
PLANNING	City Engineer	4-8431
PLAYGROUNDS	Recreation Director	4-8431
PLUMBING PERMITS	Plumbing Inspector	4-8845
PURCHASE STREET SCHOOL	Principal	4-5283
PURCHASING	City Manager	4-8431
RECREATION	Recreation Director	4-8431
SCHOOLS	Supt. of Schools	4-5963
SEWERS	Public Works Supt.	4-8431
SNOW REMOVAL	Public Works Supt.	4-8431
SOUTH SCHOOL	Principal	4-8511
STREET MAINTENANCE	Public Works Supt.	4-8431
TAX COLLECTIONS	Tax Collector	4-8431
TREES	Public Works Supt.	4-8431
TYLER SCHOOL	Principal	4-8918
WEIGHTS and MEASURES	Police	4-8431
WELFARE	Welfare Director	4-8431
ZONING LAWS	City Clerk	4-8431

## Collection of Taxes For the Year Ending

December 31, 1959

	Uncollected Dec. 31, 1958	Supp.	Total to Collect	Cash Collected	By Journal Entries: Taxes on Property Placed on Lien, Taxes on Property Taken by City, Discounts, Taken off to Bal. 1955 Taxes	Uncollected Dec. 31, 1959
1955	\$ 359.84		\$ 359.84	\$ 5.72	\$ 354.12	None
1956	838.04		838.04	30.40		577.45
1957	614.61		614.61	137.33		454.08
1958	76,618.12	\$ 266.00	76,884.12	51,896.02	23,415.58	1,141.01
1959	\$ 78,430.61	\$ 266.00	\$ 78,696.61	\$ 52,069.47	\$ 23,769.70	\$ 2,172.54
Comm.	846,646.44	4,439.70	851,086.14	769,824.87	2,519.10	74,854.73
1959 Excise Tax	\$925,077.05	\$4,705.70	\$929,782.75	\$821,894.34	\$4,572.34	\$77,027.27
1960 Excise Tax				54,039.53		
Interest				2,608.44		
Tax Collection Fees				1,767.38		
				343.40		
				\$880,653.14		

## CITY OF ROCKLAND

## STATEMENT OF DEPARTMENTAL OPERATIONS

YEAR ENDED DECEMBER 31, 1959

	Balances 1-1-59	Appropriations	Cash Receipts	Other Credits	Total	Cash Disburse- ments	Other Charges	BALANCES Lapsed Unexpended (Over- drafts)	ward at 12-31-59
<b>General Government</b>									
Legislative		\$ 1,010.00			\$ 1,010.00	\$ 1,000.00		\$ 10.00	
Executive and Finance		36,840.00	\$ 35.31	\$ 4,705.70	41,581.01	31,159.17	\$ 7,638.32	2,733.52	
Legal		1,210.00	3.00		1,213.00	1,243.25		( 30.25)	
Records		16,800.00	101.25		16,901.25	18,071.94		( 1,170.69)	
Engineering and Planning		5,430.00	4.00		5,434.00	5,438.60	372.32	( 376.92)	
		61,290.00	143.56	4,705.70	66,139.26	56,912.96	8,060.64	1,165.66	
<b>Public Safety</b>									
Police Department	\$ 952.82	56,666.00	385.39		58,004.21	57,483.93	630.74	( 110.46)	
Fire Department		69,105.30	16,512.95		85,617.95	89,869.05	603.75	( 4,854.85)	
Electrical Inspection		350.00			350.00	114.38		235.62	
Street Lights		21,700.00			21,700.00	21,669.01		30.99	
	952.82	147,821.00	16,898.34		165,672.16	169,136.37	1,234.49	( 4,698.70)	
<b>Health Department</b>									
Salaries and Knox County Hospital		4,515.00			4,515.00	4,709.20		( 194.20)	
<b>Public Works</b>									
Administration		8,550.00	3.99		8,553.99	6,921.64	1,532.00	100.35	
Maintenance		82,000.00	1,069.26		83,069.26	96,803.32	19,005.04	( 32,739.10)	
Construction		17,912.00		5,379.42	23,291.42	18,403.13	2,516.89	2,371.40	
Public Buildings		22,400.00	253.99		22,653.99	25,475.11	687.69	( 3,508.81)	
City Garage	9,602.93	1,181.14	26,483.98		37,268.05	33,568.87		3,699.18	
Airport		7,000.00	2,414.67		9,414.67	7,625.22	356.80	1,432.65	
Street Opening Permits		435.00			435.00	10.00		425.00	
Town Road Improvement Fund		3,752.11			3,752.11	3,682.93	69.18		
	9,602.93	137,862.00	9,110.16	31,863.40	188,438.49	192,490.22	24,167.60	( 28,219.33)	
<b>Welfare</b>									
Administration		5,520.00			5,520.00	5,203.87	9.24	306.89	
General Relief		29,200.00	120.30	25.00	29,345.30	29,989.56	158.24	( 802.50)	
		34,720.00	120.30	25.00	34,865.30	35,193.43	167.48	( 495.61)	
<b>Debt Service</b>									
Bonds Payable		31,000.00			31,000.00	31,000.00			
Interest		8,200.00			8,200.00	5,579.08	1,718.75	902.17	
		39,200.00			39,200.00	36,579.08	1,718.75	902.17	
<b>Recreation</b>									
Library		11,400.00	255.35		11,655.35	11,631.63	15.50	8.22	
Recreation Department		16,850.00	130.45		16,980.45	17,444.99	42.50	( 507.04)	
		28,250.00	385.80		28,635.80	29,076.62	58.00	( 498.82)	
<b>Special Assessments</b>									
County Tax		36,860.00			36,360.60	36,860.00			
School Administrative District No. 5		386,635.62			386,635.62	386,635.62			
Port District		13,900.00			13,900.60	13,900.00			
Overlay		28,392.82			28,392.82			28,392.82	
		465,788.44			465,788.44	437,395.62		28,392.82	
<b>Unclassified</b>									
Sea View Cemetery	889.81				889.81				889.81
Contingent		3,000.00			3,000.00	2,461.99		538.01	
Lobster Festival						1,588.39	273.55	( 1,871.94)	
Veterans' Graves		300.00			300.00	300.00			
Chamber of Commerce		1,000.00			1,000.00	1,000.00			
Pensions and Insurance		7,500.00	3,554.18		11,054.18	11,371.92		( 817.74)	
Sick Leave and Vacations		6,500.00			6,500.00	6,626.89		( 126.89)	
National Guard		1,500.00			1,500.00	784.60	2.85	712.55	
Civil Defense		1,000.00			1,000.00	249.20	19.25	731.55	
Advertising Natural Resources		500.00			500.00	328.72		171.28	
Insurance		7,500.00	281.80		7,781.80	8,471.58		( 689.78)	
	889.81	28,800.00	3,835.98		33,525.79	33,693.29	295.65	( 1,362.96)	889.81
<b>TOTAL</b>									
	\$11,445.56	\$98,246.44	\$30,494.14	\$36,594.10	\$1,026,789.24	\$995,186.79	\$35,702.61	(\$ 4,988.97)	\$889.81



# CLASSIFIED Adventures!

Shout  
It From  
the  
Classified  
Columns  
of the ...



COURIER-GAZETTE

Classified advertisements in this section having three lines or less will be inserted each for \$1. and three times for \$2. Additional lines will be charged at 20 cents per line for the first insertion and 10 cents per line for each additional insertion. Figure five short words per line in preparing classified advertisements. Advertisements which call for mailing to The Courier-Gazette on behalf of the advertiser will carry an additional charge of 50 cents.

Payment for classified advertising in advance of publication is required. Exceptions are those firms and persons having regular accounts with The Courier-Gazette.

## FOR SALE

EARLY pine furniture, china, glass, guns, flax wheel, odd articles for sale. HOBBY ANTIQUE SHOP, Union, closed Sundays. 80-T-101

WHITE Cabinet Sink for sale; also, hot water tank, office desk, heater, misc. articles. 15 WADSWORTH STREET, Thomaston. 80-82

TRAP Stock for sale, mill clean-up to end season. No. 1 and No. 2 grades. Call LINCOLN-VILLE ROGER 3-4700. 80-82

SINGER Dropleaf Sewing Machine for sale, excellent cond., \$17. MRS. SHIRLEY, Vinalhaven. 80-82

1957 ENGLISH Ford Zephyr-6 for sale, \$850, worth \$1050 trade in. See CHIEF on North Haven Ferry. 79-81

ATLANTIC End Heater for sale, oil or wood. CALL LYRIC 4-8369 after 4 or weekends. 79-81

GENTLE Burro for sale, \$150. With saddle, safe for children. TEL. Thomaston FLEETWOOD 4-2434. 79-81

ELEC. Range for sale in good working order. Good for camp. M. R. McKUSIC, Coopers Beach. 79-81

RABBIT Hound Pups for sale. RONALD PITCHER, East Friendship. 79-81

GOOD BUY: '59 Mobile Home, 10x32, 2 bedrooms, A-1 condition. TEL. FLEETWOOD 4-6420. 79-81

## FOR SALE

ONE 1954 MACK TRACTOR, B60

ONE 1955 MACK TRACTOR, B60

Both Have Saddle Tanks and Sanders.

Superior Oil, Inc.

ROCKLAND TEL. LYRIC 4-5545 76-11

HOMART 30 gal. glass lined auto gas water heater for sale. Like new, \$50. TEL. FRONTER 2-6280. 78-80

THOROBRED Beagle pups for sale. Excellent hunting stock to suit this fall. CALL STATE 5-2574. 78-80

HOUSEHOLD furniture for sale. Everything must go—moving out of state. TEL. LYRIC 4-0897 after 5 p. m. 78-80

BIRD Houses, Feeding Stations, Trellises, and Fences for sale. RAY'S CRAFT SHOP, Prescott Street. 79-84

I will pay cash for anything that has a resale value delivered to me. CHARLES SIMMONS, Simon's Corner, Rockport. 70-81

HOBBY - CRAFT CORNER ART - CRAFT - MODEL SUPPLIES

STAMPS COVERS 66 So. Main St. Rockland 62-11

FIRE Extinguishers, Welding Equipment and Supplies. MORRIS GORDON AND SON, Tel. LYRIC 4-4900. 44-11

TWO Year Old Chestnut Filly for sale, gentle, clever. MRS. ALTON CROMWELL, Clark Island. 77-82

ALUMINUM Windows, Doors, Awnings and Siding for sale. KENNISTON BROS., Tel. Rockland LYRIC 4-5424 or CRESTWOOD 4-2686. 15-11

9x12 LINOLEUMS for sale, regular \$10.95 for \$6.95. NORTH EASTLAND TRADING POST, Thomaston. 1-11

PIPE FOR SALE Black and galvanized. All sizes. Low prices. RICKNELL MFG. CO., Lime Street. 1-11

TESTED - GUARANTEED USED APPLIANCES Refrigerators, Electric Ranges, Gas Ranges, Automatic Washers and Dryers, Wringer Washers. ALBERT E. MACPHAIL, INC., 449 Main Street, Tel. LYRIC 4-5751. 48-11

LOAM, Driveway Gravel, Cement Gravel, Mortar Sand and Drainage Rock for sale. NEIL RUSSELL, Tel. LYRIC 4-5667. 50-11

FRANK'S BARGAIN SHOP THOMASTON OPEN

Saturdays 8 a. m. - 6 p. m. Sundays 1 p. m. - 6 p. m. 80-11

WANT SOMETHING? CHECK THE CLASSIFIEDS!

## VINALHAVEN

MRS. FLOYD ROBERTSON Correspondent Telephone 14-8

Mr. and Mrs. Burton N. Carter, daughter Jeannette, and sons Douglas, Burton and Gregory visited relatives and friends in Medomak and Friendship on Wednesday. They also shopped in Damariscotta.

Mrs. Anna Garrett is at her East Boston home for a few weeks.

Willie Gregory of North Haven called on his sister, Mrs. Ethel Calderwood, recently.

Mr. and Mrs. Fred Geary Jr., of Fulton, N. Y., are visiting relatives in town.

Mr. and Mrs. Floyd Robertson, Sr., and grandchildren, Betty Lou Hanley of Rockland and Alan Lee Peterson, and Miss Marsha Alley were visiting Captain and Mrs. Merle Mills at North Haven Wednesday.

The family of Mr. and Mrs. Fritz Skoog gathered at their home Tuesday to celebrate their

37th wedding anniversary. Those present were Mrs. Angus Parker and family of Whitinsville, Mass., Mr. and Mrs. William Parmenter and son of Norwich, Conn., Mr. and Mrs. Harold Chilles and family, Laurence Orcutt, Jr., Mr. and Mrs. Harold Haskell and family, and Mrs. Skoog's mother, Mrs. Linnie Smith. A beautiful anniversary cake was made by Mrs. Gloria Parker. Mr. and Mrs. Skoog received some very nice gifts. Refreshments were served.

Miss Ann Donahue and Thomas Mahon and Raymond Baker of Massachusetts are visiting at their summer home.

Miss Mettie Ingerson of New York is home for her summer vacation from teaching.

Mrs. Birger Youngquist has been a guest of Miss Jennie and Etta Beverage at North Haven for a few days. On Wednesday she was a dinner guest of Edna Dyer.

Miss Marjorie Rascoe, R. N., of Meriden, Conn., spent the Fourth of July weekend with her aunt and uncle, Mr. and Mrs. William Rascoe.

A circle supper will be held

FOR SALE on Spruce Head Island, modern house, 5 rooms and bath, stone fireplace in living room, sunporch and extra lot. TEL. LYRIC 4-7022. 80-82

HOUSE Lot for sale at Ingraham Hill. CALL LYRIC 4-4643. 78-80

FIVE rm. Cottage for sale on salt water - winterized, reasonable. Write "COTTAGE", c/o The Courier-Gazette. 79-81

NEW Home for sale, 5 rms. and bath. TEL. LYRIC 4-7181. 79-84

OWLS HEAD Modern two bedroom ranch type home, only 5 minute drive to Main St. Lathed and plastered, birch cupboards, handsome full bath; oil hot air heat and insulated, oak floors, deep basement. Taxed reasonably and will FHA quickly. 79-85

ROCKLAND Modern 3 bedroom ranch type home. Pretty tiled bath, oil hot air heat. Steel sink, lathed and plastered, handsome oak floors, Thermopane picture window, electric hot water, and high dry basement. Moderate price will surprise you. Will FHA easily. 77-85

CRESCENT BEACH A most desirably located cottage, furnished and so clean you can move right in. Two sizable bedrooms, full bath, fireplace, drilled well, and two car garage. Excellent ocean view from porch and nice wooded back lot. Priced for immediate sale. 79-81

SOUTH END Reconditioned Cape Cod of 7 rooms and full bath, nearly new oil furnace, new roof, new outside paint, garage. Near schools. Taxed and priced sensibly. Should FHA. 79-84

FRANK A. WHEELER General Insurance-Real Estate 21 North Main St. Tel. LY 4-5100 79-11

SHOREFRONT Lots on Islesboro for sale. Sunset view of Camden Hills. New 24-car ferry. Mainland electricity and telephone. No brokers. R. A. BEAMAN, Sunset Farm, Islesboro, Maine. 79-104

REAL ESTATE Charles E. Bicknell II 491 MAIN ST. ROCKLAND Phone LY 4-5709

INSURANCE "FOR SALE" (No. 1) Drive by this nice home located at 45 Granite Street, look at what it is. There are 7 rooms, hot water heat, heater first floor, a full bath, a 3 car garage, ample land in rear for a nice garden. A nice basement good enough for a play room. Price \$10,750. Every broker in Knox County is invited to help sell it on a 50/50 commission basis. 76-T&S-11

(No. 2) Is a 2 family house, central location. You can own it for less than \$8,500. Rented at \$50 each apartment. Either of these properties can have a reasonable loan. Thanks for reading. FREEMAN S. YOUNG 163 Main Street Rockland, Maine 78-80

Cousens' Realty Business Opportunities Cottages, Lots and Dwellings 170 Maverick Street TEL. LYRIC 4-5160

Across from Golf Course

EXCEPTIONAL!!! Salt water farm of 120 acres just 10 minutes from Rockland. Old Maine type farmhouse with 3 finished bedrooms and open chamber. 1st floor has kitchen with white sink, summer kitchen and living room overlooking the water, bedroom and full bath. Full cellar. 52 gal. elec. hot water tank. Electric pump. Ell is connected to a large barn in good repair. There are approx. 35 acres in blueberries, 35 in tillage and the rest is pulp and standing timber. Truly a find and being offered by owner due to transfer out of state for only \$10,000. 78-80

CONTACT DON HENRY 99 Park Street Tel. LYRIC 4-4465 78-80

SEVEN Room House for sale, 300 feet from town beach and park. TEL. CEDAR 6-3582. 42-11

## CAMDEN GIRL TO ACCOMPANY MISSIONARY HUSBAND TO BRAZIL



Mr. and Mrs. Robert Bennett

CAMDEN — The daughter of Camden residents is preparing to go with her husband to Brazil for missionary service.

The Rev. and Mrs. Robert Bennett were appointed at the June meeting of the board of directors of the Conservative Baptist Foreign Mission Society of Wheaton, Ill. Mrs. Bennett is the former Julia Thomas, daughter of Mr. and Mrs. Lloyd Thomas of 3 Cross Street, Camden.

After graduating from Camden High School in 1943, Mrs. Bennett worked on a newspaper in Dover, N. H., and then attended Gordon College, Beverly Farms, Mass., receiving a B.S. in 1953. She has had experience as a school teacher, and as a pastor's wife. Bennett has been

July 7 at the Union Church vestry at 5:30. Serving on the supper committee are Carrie Bennett, Rebecca Holbrook, Vera Johnson and Edith Poole.

Miss Barbara Brown of Worcester, Mass., were guests over the weekend of Mrs. Brown's parents, Mr. and Mrs. Elisha Brown.

as measured along a line at right angles to the Base Line at about Station 0+16; Thence northeasterly along the southeasterly assumed old right of way line of State Aid Highway No. 1 about forty-six (46) feet to the westerly corner of land now or formerly of Lillian D. Rackliffe; Thence southeasterly along the southeasterly line of said Rackliffe about eighty-four (84) feet to an angle point; Thence southeasterly along the southeasterly line of said Rackliffe about thirty-seven (37) feet to a point thirty-three (33) feet northeasterly from and as measured along a line at right angles to the Base Line at about Station 1+12; Thence S. 48°-50' E. about nine hundred sixteen (916) feet to a point in the northeasterly line of land now or formerly of Blanche Mann, said point being thirty-three (33) feet northeasterly from and as measured along a line at right angles to the Base Line at about Station 1+12; Thence S. 48°-50' E. about nine hundred forty-four (144) feet to the point of beginning. The above described lot or parcel of land contains approximately 1.91 acres. The State Highway Commission directs that this Layout and Notice of Taking be recorded in the Registry of Deeds of Knox County, filed with the Town Clerk of the Town of South Thomaston and with the County Commissioners of Knox County, and published in "The Courier-Gazette", a paper published in the County where said highway is located; and also directs that a copy of the Right of Way Map be filed with the County Commissioners of said County; and also that Notice be sent by Registered Mail to any Mortgagees of record. Dated at Augusta, Maine June 29, 1960

MAINE STATE HIGHWAY COMMISSION David H. Stevens (signed) David H. Stevens, Chairman Perry S. Furbush (signed) Perry S. Furbush, Member R. Leon Williams (signed) R. Leon Williams, Member

Personally appeared the above named David H. Stevens, Perry S. Furbush, and R. Leon Williams and acknowledged the above instrument to be their free act and deed in their said capacities as members of the Maine State Highway Commission. Before me, Clarence E. Hart (signed) Justice of the Peace This is a true copy: ATTEST: Jean M. Larkin 80-11

LEGAL NOTICE LAYOUT AND NOTICE OF TAKING NOTICE IS HEREBY GIVEN to all whom it may concern that the State Highway Commission of the State of Maine, acting in conformity with the provisions of Section 19, Chapter 23 of the Revised Statutes of Maine 1954, has determined that public exigency requires the laying out, locating and/or relocating, altering, widening, constructing, changing the grade and changing the drainage of a portion of State Aid Highway No. 2 in the Town of South Thomaston, County of Knox.

The State Highway Commission further gives Notice hereby that it has determined that public exigency requires for the purposes of laying out said highway and the prompt commencement of construction thereof the taking as for public use and in accordance with Sections 20 and 21 of Chapter 23 of the Revised Statutes, all lands, buildings and rights in land as hereinafter set forth within or adjacent to the boundary lines hereinafter established and as shown on a Right of Way Map, State Aid Highway No. 2, Town of South Thomaston, dated January 1960, on file in the office of the State Highway Commission (S.H.C. File S-7-101) and to be recorded in the Registry of Deeds of Knox County, a print of which is on file in the office of the County Commissioners of Knox County.

Land of Lillian D. Rackliffe Taking hereby a certain lot or parcel of land situated in the Town of South Thomaston, bounded and described as follows: Parcel (1) Beginning at a point in the southeasterly assumed old right of way line of State Aid Highway No. 1, said point being thirty-three (33) feet northeasterly from and as measured along a line at right angles to the Base Line at about Station 0+27; Thence S. 48°-50' E. about eighty-five (85) feet to a point in the northeasterly line of land now or formerly of Elbert W. Burton and Eunice M. Burton, said point being thirty-three (33) feet northeasterly from and as measured along a line at right angles to the Base Line at about Station 1+12; Thence southeasterly along the southeasterly line of said Burton's about thirty-seven (37) feet to an angle point; Thence northeasterly along the southeasterly line of said Burton's about eighty-four (84) feet to the southeasterly assumed old right of way line of State Aid Highway No. 1; Thence northeasterly along the southeasterly assumed old right of way line of State Aid Highway No. 1 about twenty-one (21) feet to the point of beginning. The above described lot or parcel of land contains approximately 0.06 acre. Land of Elbert W. Burton and Eunice M. Burton Taking hereby a certain lot or parcel of land situated in the Town of South Thomaston, bounded and described as follows: Parcel (2) Beginning at a point in the southeasterly assumed old right of way line of State Aid Highway No. 1, said point being thirty-three (33) feet southeasterly from and

as measured along a line at right angles to the Base Line at about Station 0+16; Thence northeasterly along the southeasterly assumed old right of way line of State Aid Highway No. 1 about forty-six (46) feet to the westerly corner of land now or formerly of Lillian D. Rackliffe; Thence southeasterly along the southeasterly line of said Rackliffe about eighty-four (84) feet to an angle point; Thence southeasterly along the southeasterly line of said Rackliffe about thirty-seven (37) feet to a point thirty-three (33) feet northeasterly from and as measured along a line at right angles to the Base Line at about Station 1+12; Thence S. 48°-50' E. about nine hundred sixteen (916) feet to a point in the northeasterly line of land now or formerly of Blanche Mann, said point being thirty-three (33) feet northeasterly from and as measured along a line at right angles to the Base Line at about Station 1+12; Thence S. 48°-50' E. about nine hundred forty-four (144) feet to the point of beginning. The above described lot or parcel of land contains approximately 1.91 acres. The State Highway Commission directs that this Layout and Notice of Taking be recorded in the Registry of Deeds of Knox County, filed with the Town Clerk of the Town of South Thomaston and with the County Commissioners of Knox County, and published in "The Courier-Gazette", a paper published in the County where said highway is located; and also directs that a copy of the Right of Way Map be filed with the County Commissioners of said County; and also that Notice be sent by Registered Mail to any Mortgagees of record. Dated at Augusta, Maine June 29, 1960

MAINE STATE HIGHWAY COMMISSION David H. Stevens (signed) David H. Stevens, Chairman Perry S. Furbush (signed) Perry S. Furbush, Member R. Leon Williams (signed) R. Leon Williams, Member

Personally appeared the above named David H. Stevens, Perry S. Furbush, and R. Leon Williams and acknowledged the above instrument to be their free act and deed in their said capacities as members of the Maine State Highway Commission. Before me, Clarence E. Hart (signed) Justice of the Peace This is a true copy: ATTEST: Jean M. Larkin 80-11

LEGAL NOTICE LAYOUT AND NOTICE OF TAKING NOTICE IS HEREBY GIVEN to all whom it may concern that the State Highway Commission of the State of Maine, acting in conformity with the provisions of Section 19, Chapter 23 of the Revised Statutes of Maine 1954, has determined that public exigency requires the laying out, locating and/or relocating, altering, widening, constructing, changing the grade and changing the drainage of a portion of State Aid Highway No. 2 in the Town of South Thomaston, County of Knox.

The State Highway Commission further gives Notice hereby that it has determined that public exigency requires for the purposes of laying out said highway and the prompt commencement of construction thereof the taking as for public use and in accordance with Sections 20 and 21 of Chapter 23 of the Revised Statutes, all lands, buildings and rights in land as hereinafter set forth within or adjacent to the boundary lines hereinafter established and as shown on a Right of Way Map, State Aid Highway No. 2, Town of South Thomaston, dated January 1960, on file in the office of the State Highway Commission (S.H.C. File S-7-101) and to be recorded in the Registry of Deeds of Knox County, a print of which is on file in the office of the County Commissioners of Knox County.

Land of Lillian D. Rackliffe Taking hereby a certain lot or parcel of land situated in the Town of South Thomaston, bounded and described as follows: Parcel (1) Beginning at a point in the southeasterly assumed old right of way line of State Aid Highway No. 1, said point being thirty-three (33) feet northeasterly from and as measured along a line at right angles to the Base Line at about Station 0+27; Thence S. 48°-50' E. about eighty-five (85) feet to a point in the northeasterly line of land now or formerly of Elbert W. Burton and Eunice M. Burton, said point being thirty-three (33) feet northeasterly from and as measured along a line at right angles to the Base Line at about Station 1+12; Thence southeasterly along the southeasterly line of said Burton's about thirty-seven (37) feet to an angle point; Thence northeasterly along the southeasterly line of said Burton's about eighty-four (84) feet to the southeasterly assumed old right of way line of State Aid Highway No. 1; Thence northeasterly along the southeasterly assumed old right of way line of State Aid Highway No. 1 about twenty-one (21) feet to the point of beginning. The above described lot or parcel of land contains approximately 0.06 acre. Land of Elbert W. Burton and Eunice M. Burton Taking hereby a certain lot or parcel of land situated in the Town of South Thomaston, bounded and described as follows: Parcel (2) Beginning at a point in the southeasterly assumed old right of way line of State Aid Highway No. 1, said point being thirty-three (33) feet southeasterly from and

as measured along a line at right angles to the Base Line at about Station 0+16; Thence northeasterly along the southeasterly assumed old right of way line of State Aid Highway No. 1 about forty-six (46) feet to the westerly corner of land now or formerly of Lillian D. Rackliffe; Thence southeasterly along the southeasterly line of said Rackliffe about eighty-four (84) feet to an angle point; Thence southeasterly along the southeasterly line of said Rackliffe about thirty-seven (37) feet to a point thirty-three (33) feet northeasterly from and as measured along a line at right angles to the Base Line at about Station 1+12; Thence S. 48°-50' E. about nine hundred sixteen (916) feet to a point in the northeasterly line of land now or formerly of Blanche Mann, said point being thirty-three (33) feet northeasterly from and as measured along a line at right angles to the Base Line at about Station 1+12; Thence S. 48°-50' E. about nine hundred forty-four (144) feet to the point of beginning. The above described lot or parcel of land contains approximately 1.91 acres. The State Highway Commission directs that this Layout and Notice of Taking be recorded in the Registry of Deeds of Knox County, filed with the Town Clerk of the Town of South Thomaston and with the County Commissioners of Knox County, and published in "The Courier-Gazette", a paper published in the County where said highway is located; and also directs that a copy of the Right of Way Map be filed with the County Commissioners of said County; and also that Notice be sent by Registered Mail to any Mortgagees of record. Dated at Augusta, Maine June 29, 1960

MAINE STATE HIGHWAY COMMISSION David H. Stevens (signed) David H. Stevens, Chairman Perry S. Furbush (signed) Perry S. Furbush, Member R. Leon Williams (signed) R. Leon Williams, Member

Personally appeared the above named David H. Stevens, Perry S. Furbush, and R. Leon Williams and acknowledged the above instrument to be their free act and deed in their said capacities as members of the Maine State Highway Commission. Before me, Clarence E. Hart (signed) Justice of the Peace This is a true copy: ATTEST: Jean M. Larkin 80-11

LEGAL NOTICE LAYOUT AND NOTICE OF TAKING NOTICE IS HEREBY GIVEN to all whom it may concern that the State Highway Commission of the State of Maine, acting in conformity with the provisions of Section 19, Chapter 23 of the Revised Statutes of Maine 1954, has determined that public exigency requires the laying out, locating and/or relocating, altering, widening, constructing, changing the grade and changing the drainage of a portion of State Aid Highway No. 2 in the Town of South Thomaston, County of Knox.

The State Highway Commission further gives Notice hereby that it has determined that public exigency requires for the purposes of laying out said highway and the prompt commencement of construction thereof the taking as for public use and in accordance with Sections 20 and 21 of Chapter 23 of the Revised Statutes, all lands, buildings and rights in land as hereinafter set forth within or adjacent to the boundary lines hereinafter established and as shown on a Right of Way Map, State Aid Highway No. 2, Town of South Thomaston, dated January 1960, on file in the office of the State Highway Commission (S.H.C. File S-7-101) and to be recorded in the Registry of Deeds of Knox County, a print of which is on file in the office of the County Commissioners of Knox County.

Land of Lillian D. Rackliffe Taking hereby a certain lot or parcel of land situated in the Town of South Thomaston, bounded and described as follows: Parcel (1) Beginning at a point in the southeasterly assumed old right of way line of State Aid Highway No. 1, said point being thirty-three (33) feet northeasterly from and as measured along a line at right angles to the Base Line at about Station 0+27; Thence S. 48°-50' E. about eighty-five (85) feet to a point in the northeasterly line of land now or formerly of Elbert W. Burton and Eunice M. Burton, said point being thirty-three (33) feet northeasterly from and as measured along a line at right angles to the Base Line at about Station 1+12; Thence southeasterly along the southeasterly line of said Burton's about thirty-seven (37) feet to an angle point; Thence northeasterly along the southeasterly line of said Burton's about eighty-four (84) feet to the southeasterly assumed old right of way line of State Aid Highway No. 1; Thence northeasterly along the southeasterly assumed old right of way line of State Aid Highway No. 1 about twenty-one (21) feet to the point of beginning. The above described lot or parcel of land contains approximately 0.06 acre. Land of Elbert W. Burton and Eunice M. Burton Taking hereby a certain lot or parcel of land situated in the Town of South Thomaston, bounded and described as follows: Parcel (2) Beginning at a point in the southeasterly assumed old right of way line of State Aid Highway No. 1, said point being thirty-three (33) feet southeasterly from and

as measured along a line at right angles to the Base Line at about Station 0+16; Thence northeasterly along the southeasterly assumed old right of way line of State Aid Highway No. 1 about forty-six (46) feet to the westerly corner of land now or formerly of Lillian D. Rackliffe; Thence southeasterly along the southeasterly line of said Rackliffe about eighty-four (84) feet to an angle point; Thence southeasterly along the southeasterly line of said Rackliffe about thirty-seven (37) feet to a point thirty-three (33) feet northeasterly from and as measured along a line at right angles to the Base Line at about Station 1+12; Thence S. 48°-50' E. about nine hundred sixteen (916) feet to a point in the northeasterly line of land now or formerly of Blanche Mann, said point being thirty-three (33) feet northeasterly from and as measured along a line at right angles to the Base Line at about Station 1+12; Thence S. 48°-50' E. about nine hundred forty-four (144) feet to the point of beginning. The above described lot or parcel of land contains approximately 1.91 acres. The State Highway Commission directs that this Layout and Notice of Taking be recorded in the Registry of Deeds of Knox County, filed with the Town Clerk of the Town of South Thomaston and with the County Commissioners of Knox County, and published in "The Courier-Gazette", a paper published in the County where said highway is located; and also directs that a copy of the Right of Way Map be filed with the County Commissioners of said County; and also that Notice be sent by Registered Mail to any Mortgagees of record. Dated at Augusta, Maine June 29, 1960

MAINE STATE HIGHWAY COMMISSION David H. Stevens (signed) David H. Stevens, Chairman Perry S. Furbush (signed) Perry S. Furbush, Member R. Leon Williams (signed) R. Leon Williams, Member

Personally appeared the above named David H. Stevens, Perry S. Furbush, and R. Leon Williams and acknowledged the above instrument to be their free act and deed in their said capacities as members of the Maine State Highway Commission. Before me, Clarence E. Hart (signed) Justice of the Peace This is a true copy: ATTEST: Jean M. Larkin 80-11

LEGAL NOTICE LAYOUT AND NOTICE OF TAKING NOTICE IS HEREBY GIVEN to all whom it may concern that the State Highway Commission of the State of Maine, acting in conformity with the provisions of Section 19, Chapter 23 of the Revised Statutes of Maine 1954, has determined that public exigency requires the laying out, locating and/or relocating, altering, widening, constructing, changing the grade and changing the drainage of a portion of State Aid Highway No. 2 in the Town of South Thomaston, County of Knox.

The State Highway Commission further gives Notice hereby that it has determined that public exigency requires for the purposes of laying out said highway and the prompt commencement of construction thereof the taking as for public use and in accordance with Sections 20 and 21 of Chapter 23 of the Revised Statutes, all lands, buildings and rights in land as hereinafter set forth within or adjacent to the boundary lines hereinafter established and as shown on a Right of Way Map, State Aid Highway No. 2, Town of South Thomaston, dated January 1960, on file in the office of the State Highway Commission (S.H.C. File S-7-101) and to be recorded in the Registry of Deeds of Knox County, a print of which is on file in the office of the County Commissioners of Knox County.

Land of Lillian D. Rackliffe Taking hereby a certain lot or parcel of land situated in the Town of South Thomaston, bounded and described as follows: Parcel (1) Beginning at a point in the southeasterly assumed old right of way line of State Aid Highway No. 1, said point being thirty-three (33) feet northeasterly from and as measured along a line at right angles to the Base Line at about Station 0+27; Thence S. 48°-50' E. about eighty-five (85) feet to a point in the northeasterly line of land now or formerly of Elbert W. Burton and Eunice M. Burton, said point being thirty-three (33) feet northeasterly from and as measured along a line at right angles to the Base Line at about Station 1+12; Thence southeasterly along the southeasterly line of said Burton's about thirty-seven (37) feet to an angle point; Thence northeasterly along the southeasterly line of said Burton's about eighty-four (84) feet to the southeasterly assumed old right of way line of State Aid Highway No. 1; Thence northeasterly along the southeasterly assumed old right of way line of State Aid Highway No. 1 about twenty-one (21) feet to the point of beginning. The above described lot or parcel of land contains approximately 0.06 acre. Land of Elbert W. Burton and Eunice M. Burton Taking hereby a certain lot or parcel of land situated in the Town of South Thomaston, bounded and described as follows: Parcel (2) Beginning at a point in the southeasterly assumed old right of way line of State Aid Highway No. 1, said point being thirty-three (33) feet southeasterly from and

as measured along a line at right angles to the Base Line at about Station 0+16; Thence northeasterly along the southeasterly assumed old right of way line of State Aid Highway No. 1 about forty-six (46) feet to the westerly corner of land now or formerly of Lillian D. Rackliffe; Thence southeasterly along the southeasterly line of said Rackliffe about eighty-four (84) feet to an angle point; Thence southeasterly along the southeasterly line of said Rackliffe about thirty-seven (37) feet to a point thirty-three (33) feet northeasterly from and as measured along a line at right angles to the Base Line at about Station 1+12; Thence S. 48°-50' E. about nine hundred sixteen (916) feet to a point in the northeasterly line of land now or formerly of Blanche Mann, said point being thirty-three (33) feet northeasterly from and as measured along a line at right angles to the Base Line at about Station 1+12; Thence S. 48°-50' E. about nine hundred forty-four (144) feet to the point of beginning. The above described lot or parcel of land contains approximately 1.91 acres. The State Highway Commission directs that this Layout and Notice of Taking be recorded in the Registry of Deeds of Knox County, filed with the Town Clerk of the Town of South Thomaston and with the County Commissioners of Knox County, and published in "The Courier-Gazette", a paper published in the County where said highway is located; and also directs that a copy of the Right of Way Map be filed with the County Commissioners of said County; and also that Notice be sent by Registered Mail to any Mortgagees of record. Dated at Augusta, Maine June 29, 1960

MAINE STATE HIGHWAY COMMISSION David H. Stevens (signed) David H. Stevens, Chairman Perry S. Furbush (signed) Perry S. Furbush, Member R. Leon Williams (signed) R. Leon Williams, Member

Personally appeared the above named David H. Stevens, Perry S. Furbush, and R. Leon Williams and acknowledged the above instrument to be their free act and deed in their said capacities as members of the Maine State Highway Commission. Before me, Clarence E. Hart (signed) Justice of the Peace This is a true copy: ATTEST: Jean M. Larkin 80-11

LEGAL NOTICE LAYOUT AND NOTICE OF TAKING NOTICE IS HEREBY GIVEN to all whom it may concern that the State Highway Commission of the State of Maine, acting in conformity with the provisions of Section 19, Chapter 23 of the Revised Stat



## Social Events

Marjorie Mayo

Mrs. Florence M. Barrett of Keene, N. H., is spending a week as the guest of her daughter, Mrs. Barbara Griffith, 58 Brewster Street. She was accompanied here by Mrs. Griffith's brother and sister-in-law, Mr. and Mrs. Marshall Barrett, and their children, Marshall, Jr., and Linda of Gilsun, N. H., who are on their way to Bar Harbor to take a trip to Nova Scotia on the Bluenose. On their return they will take Mrs. Barrett back to New Hampshire with them.

World War I Auxiliary will meet at the Grand Army Hall Tuesday evening, July 5. At the meeting conducted by President Mary Smith of Camden, work will be done on a class of candidates. Reports of the Grand Army Convention held in Rockland recently will be given by the delegates. Following the meeting, refreshments will be served in the dining room under the direction of Myra Watts.

Mr. and Mrs. George E. Allen, two daughters, Patty and Debby, an son Michael of Granby, Mass., were the guests of his parents, Mr. and Mrs. O. S. Allen, 33 Spring Street, over the holiday weekend. Sunday guests of the Allens were Mr. and Mrs. Joseph O. Libby of Waterville.

Mr. and Mrs. L. Eugene Frost and son Sherwood, North Main Street, spent last week at West Brantree, Mass., as guests of Mr. and Mrs. Manfred Thomson. While there they attended the 50th wedding anniversary reception of Mr. and Mrs. E. Herbert Elliott, Wollaston, held in the Wollaston Congregational Church, where Mr. Elliott is head deacon. In the receiving line with Mr. and Mrs. Elliott were their son and daughter-in-law, Mr. and Mrs. Herbert M. Elliott of Denver, Colo., and their two daughters of Brantree. About 400 guests were present. On Wednesday, the Frosts were guests of Mr. and Mrs. Frank Thompson, Jr., at their summer home at Buzzards Bay. The Frosts returned home on Thursday.

**Fine Grain Developing and Jumbo Prints**  
8 exp. roll ..... 75  
12 exp. roll ..... 75  
Send for price lists on black and white and color service  
**DELUX PHOTO SERVICE**  
Box 546 Bar Harbor, Me.  
Remit with Coin, No Stamps 43-12

Anderson Camp Auxiliary will meet at the Grand Army Hall, Wednesday at 7:30 p. m. President Amelia Carter will preside at the meeting and reports will be given by convention delegates.

Mr. and Mrs. James A. Moore of Glen Cove are spending a 10 day vacation on an automobile trip.

A special meeting of the Civil War Memorial Association will be held at the home of Herman Winchenbaugh, 15 Ocean Street. Members are requested to be present as business of great importance will be discussed.

### Hawaiian Party Held Wednesday At Owls Head

OWLS HEAD—Miss Jill Farrell entertained at a Hawaiian Luau Wednesday night at the cottage of her parents. Preceding the party, swimming was held at the beach. A treasure hunt was held with John Walker, Steven Willette and Bernard Oakes, Jr., winning the award of a bag of candy bars. Winning a prize for the fortune cookie game was Mary Moore. Dancing was enjoyed throughout the evening and Connie Farrell and Mary Moore presented Hawaiian dances attired in proper costume. The boys wore brightly colored shirts and the girls complemented their costumes with leis and flowers in their hair.

The porch was decorated with streamers in Hawaiian colors and the guests partook of the feast sitting in a circle on the floor. The gay refreshment cloth was centered with an arrangement of fruit which included pineapple, coconut and other colorful fruits. Refreshments included hot dogs, fried pineapple, potato chips, coke, and fruit.

The girls remained at all night guests of Jill. The guest list included Betty Bird, Claudia Rapose, Mary Moore, Evelyn Hary, Connie Farrell, Paula McConchie, Judy Gupitell, John Walker, Steven Willette, Bernard Oakes, Jr., Billy Tinker, David Small and Donald Kallioch.

### Family Gathers For First Time In 17 Years

MARTINSVILLE — Mr. and Mrs. Oscar Stanley of Martinsville, who have been married 51 years, had a reunion last week with their 14 children and their families, for the first time in

## Miss Griffith Wed Saturday Joel Hupper Takes Bride



Mr. and Mrs. Philip R. Standel

Photo by Gifford

The Universalist Church in Rockland, decorated with baskets of mixed flowers and white candelabra, was the scene Saturday of the 4 o'clock wedding of Miss Nancy Jane Griffith of 58 Brewster Street and Commonwealth Avenue, Boston, and Philip Richard Standel of 15 York Street, Boston.

Miss Griffith is the daughter of Mrs. Carl Dean Griffith and the late Mr. Griffith of 58 Brewster Street, Rockland, and Mr. Standel is the son of Mrs. Annette Standel of Boston and Myer Standel of Hollywood, Calif.

The double ring ceremony was performed by Rev. William H. Robbins, pastor of the church. Traditional wedding music was played by Mrs. Charles Haynes of Rockland.

The bride, given in marriage by her brother, Carl Dean Griffith, Jr., wore a simple white sheath wedding gown of faille, styled with a scoop neckline, and overskirt of brocade taffeta. The gown was fashioned by her mother. Her white ballerina length veil fell from a crown of white baby roses and she carried a Colonial bridal bouquet of white flowers.

The maid of honor, Miss Claire Therese Lukash of Boston, wore a pink princess line dress of nylon brocade. Her headpiece was a veil of pink net and she carried a Colonial bouquet of pink flowers.

Robert Barry Volkin of Boston acted as best man and the ushers were Annapolis Naval Academy Midshipman William F. O'Connor of Boston and David Standel of Boston, brother of the bridegroom.

The bride's mother wore a beige sheath of Moygashel linen trimmed with champagne lace complemented by a corsage of pink sweetheart roses.

Over 17 years. Sixty-eight members of the family were present for a cookout at Drift Inn Beach near the Peoples' cottage. Out of town relatives who have now returned to their homes are: Mr. and Mrs. Carleton Stanley and children and Mr. and Mrs. Morris Stanley and family, all of Houston, Texas; Mr. and Mrs. Norman Stanley and daughters of Whitinsville, Mass.; Mr. and Mrs. Cecil Stanley and family from Laconia, N. H.; Mr. and Mrs. Richard McIntosh, also from Massachusetts; Mr. and Mrs. Edward Cullen of Belfast and Mrs. Raymond Wallace of Thomaston. Mrs. Oscar Stanley's niece and her husband, Mr. and Mrs. Thomas Tatostian of Tewksbury, Mass., were the house guests of Mr. and Mrs. Dwinah Stanley of Martinsville.



Mr. Joseph H. Hupper

BAR HARBOR—Miss Eleanor Joan Thayer of New York City, daughter of Professor and Mrs. Albert R. Thayer of Brunswick, became the bride of Joel Henry Hupper, son of Mr. and Mrs. Roscoe Hupper of New York City and Martinsville, Saturday, July 2, at the Saint Saviour's Episcopal Church in Bar Harbor. The 3 o'clock double ring ceremony was performed by Rev. Leopold Damrosch.

Escorted by her father, who gave her in marriage, the bride wore a white wedding gown of silk organza with a spray of Edwardian roses centering the front of the scoop neckline and bordering the bottom of the full floor length skirt. Her veil fell from a matching organza bandeau and she carried a bridal cascade of Majestic daisies, stephanotis and ivy.

The maid of honor, Miss Marjorie Thayer, sister of the bride, wore a white gown of embroidered organza over taffeta. John R. Hupper, brother of the bridegroom, acted as best man and the ushers were William

Hays, John W. Church, Jr., Henry H. Booth and William Horner.

The bride's mother wore a powder blue chiffon gown and the bridegroom's mother wore a carnation pink print on white background gown.

A reception was held at Oakes Center, Bar Harbor, after which the couple left by plane for a two weeks wedding trip to Bermuda. They will be at home at 14 Sutton Place South, New York City, after July 18.

Mrs. Hupper is a graduate of Brunswick High School and of Goucher College in Baltimore, Md. She is employed as a teacher on the New York television program, "Romper Room".

Mr. Hupper graduated from Exeter Academy, Exeter, N. H., and Bowdoin College in Brunswick. He served in Korea as a first lieutenant in the U. S. Army Signal Corps. He belongs to Zeta Psi at Bowdoin College and Lincoln's Inn, Harvard Law School. He is employed at International Business Machines Corp. in New York.

## Granddaughter of Warren Woman Wed In New York

The Congregational Church in Scarsdale, N. Y., was the scene of the wedding of Miss Betty Adams, daughter of Mr. and Mrs. Clarence H. Adams, of 3 Wagon Wheel Road, Mamaroneck, N. Y., and granddaughter of Mrs. Margaret Sawyer of Warren, to Baron Edward Stallman of Scarsdale, son of Mrs. Floyd W. Mundy of 62 Woods Lane, Scarsdale and Edward B. Stallman of Millington, N. J. The bride's mother was formerly of Warren.

The bride, given in marriage by her father, wore a white bouquet taffeta wedding gown, fashioned with a Alencon lace and seed pearl bodice, the skirt ending in a chapel train. Her tulle veil fell from a lace cap, and she carried a semi-cascade bridal bouquet of lilies-of-the-valley and delphinium.

The matron of honor, Mrs. Mortimer H. Chute, Jr., of Garden City, L. I., N. Y., wore an aqua linen gown, a headpiece of pink sweetheart roses and ivy, and carried a bouquet of pink roses.

The bridesmaids were Miss Mary Mundy of Scarsdale, a sister of the bridegroom; Mrs. F. Trenery Dolbear, Jr., of Branford, Conn.; Mrs. Reuel Kaighn, Jr., of Norfolk, Va.; Mrs. John McCahan of Philadelphia, Pa., and Miss Katrina McLane of Bloomfield, Conn.

Robert Mundy, brother of the bridegroom, acted as best man and the ushers were Eugene R. Smoley, Jr., of Scarsdale, Peter Blume of Drexel Hill, N. Y., Mr. Chute, Dale Frelow of Ithaca, N. Y., and Charles Sutherland of Pittsburgh, Pa.

A reception was held for 250

## Washington Couple Wed



Mr. and Mrs. Bunker E. Ludwig, Jr.

WASHINGTON—At an evening ceremony Saturday, July 2, Miss Rebecca Lee Upham, daughter of Mr. and Mrs. Oscar Fossett Upham of Washington, became the bride of Bunker Earl Ludwig, Jr., of Washington. The ceremony was performed at the Washington Methodist Church with Rev. George Duff officiating.

Given in marriage by her father, the bride wore a street length dress of soft pink dacron, complemented by a white hat and gloves. She carried a white

Bible. Mrs. Joyce Johnson was matron of honor and her husband, Malcolm Johnson, brother of the bridegroom, acted as best man. The usher was Reginald Upham, brother of the bride.

Following the ceremony, a reception was held in the Washington Grange Hall.

The couple both graduated from Union High School, Mrs. Ludwig in the Class of 1958 and Mr. Ludwig in the Class of 1956. They will make their home in Kittery.

## Father Fisher House Open In Bluehill

Visitors to the region east of the Penobscot River will have an opportunity to include a visit

to the Father Fisher House among the points of interest. This home, built in the early 19th century by the Rev. Jonathan Fisher, the first settled minister east of the Penobscot River, stands in Blue Hill. It has several architectural features of interest and houses an interesting collection of Fisher furniture, letters, pictures, paintings, and tools.

The home will be open on Tuesdays and Fridays from 2 to 5 o'clock from July 1 to mid-September.

Jonathan Fisher was the first settled minister in the area across the Penobscot. He was extremely versatile and could paint a picture, write a sermon, make a desk, design a plow, or concoct a medicine with equal ease. Miss Mary Ellen Chas. biography of the remarkable preacher is well worth reading.

Mr. Stallman graduated from Cornell University, College of Architecture, and is a member of Sigma Phi Fraternity.

## STRAND STARTS WEDNESDAY

Mat. 1:30 - Eve. 6:45-9:15



**RODGERS & HAMMERSTEIN'S SOUTH PACIFIC**

Advanced Prices For Adults — Children Reg. Prices  
ENDS TUESDAY "WILD RIVER"  
2:00 - 6:45 - 8:45 Montgomery Clift — Lee Remick 80-11

## KNOX

LYRIC 4-5141 WED. thru SAT. 2 SHOWS DAILY 1:30 — 7:45

AT OUR REGULAR PRICES  
**The World's Most Honored Show**



**MICHAEL TODD'S Around the World in 80 days**

David Niven - Cantinflas - Robert Newton - Shirley MacLaine  
Featuring 44 "Cameo" Stars • TECHNICOLOR®

Screenplay by JAMES POE • JOHN FARROW and S. J. PERELMAN  
From the Classic by JULES VERNE • Directed by MICHAEL ANDERSON

**52 BEST PICTURE AWARDS and WORLD-WIDE HONORS**

ENDS TUESDAY, 2:00-6:40-8:45

"HERCULES UNCHAINED"

80-11



## Treat yourself to a real vacation — with Beneficial's Summer Money Special

Cash to get ready, cash to go, cash along the way — that's BENEFICIAL'S SUMMER MONEY SPECIAL. Phone today — get cash fast — plus Credit Card for extra cash wherever you go. "You're the boss" at BENEFICIAL!

Loans \$20 to \$2500 on your Signature, Furniture or Car  
356 MAIN STREET, 2nd Fl., ROCKLAND  
FARNSWORTH MEMORIAL BLDG. • LYRIC 4-4884  
OPEN FRIDAY EVENINGS UNTIL 8 P.M.  
Loans made to residents of all surrounding towns • Loans also made by mail

**BENEFICIAL FINANCE CO.**

80-11

# SAMPSON'S

Tuesday and Wednesday Only

We Reserve the Right to Limit

FULLY COOKED <b>BOILED HAM</b>	Lb. <b>79¢</b>
TEA FLAKE <b>SALTINE CRACKERS</b>	Lb. Box <b>19¢</b>
CANADA DRY <b>SODA</b> ASSORTED FLAVORS	12 CANS <b>\$1.</b>
FRESH RED RIPE <b>WATERMELON</b>	EACH <b>79¢</b>

80-11



DIPPING BREAD IN THE GRAVY MAY BE BAD MANNERS BUT IT'S AWFULLY GOOD TASTE

Good manners are a part of our service. You'll always find a friendly welcome, experienced assistance.

**Clark's COLOR CENTER**  
ROCKLAND'S Decorating Headquarters  
INTERIOR • EXTERIOR  
WALLPAPER PAINTS ACCESSORIES  
485 MAIN ST. Rockland, LYRIC 4-4802  
ESTIMATES

## First IN QUALITY PERFORMANCE



**THE WORLD'S FINEST Maritime Oil Co.**  
234 PARK ST. TEL. LY 4-4827  
ROCKLAND, MAINE 95-EOT-47

## ROCKLAND DRIVE-IN Theatre

FIRST SHOWING STARTS WEDNESDAY thru SATURDAY



**JERRY LEWIS as the Bellboy**

PLUS "WATUSI" IN COLOR Children Under 12 Yrs. FREE Show Starts At Dusk

ENDS TUESDAY NIGHT  
FRANK SINATRA DEAN MARTIN  
"SOME CAME RUNNING" Plus  
"INVISIBLE INVADERS"

80-11