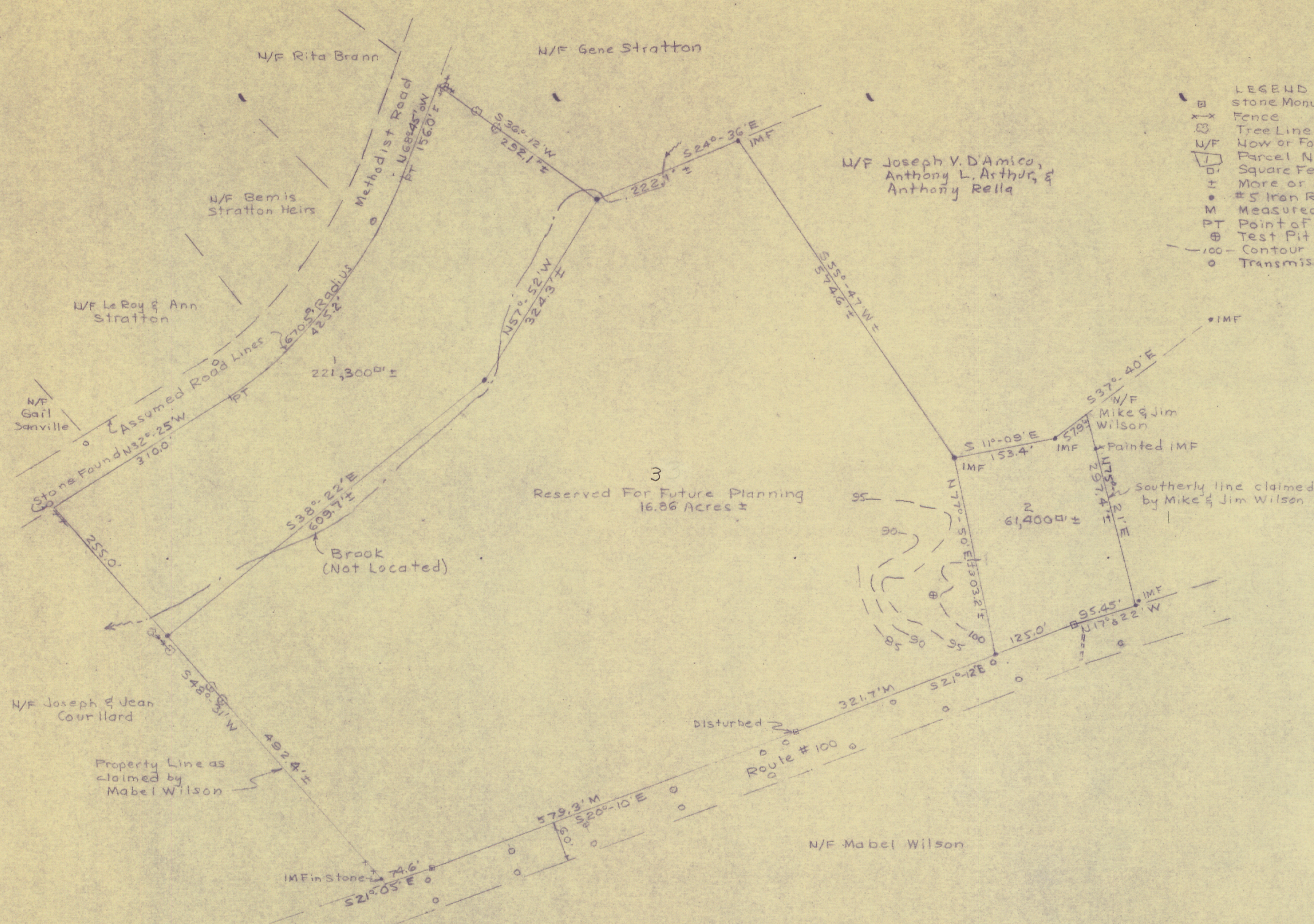


As used by the Maine
Turnpike Authority



- LEGEND
- Stone Monument Found
 - Fence
 - Tree Line
 - U/F Now or Formerly of
 - Parcel Number One
 - Square Feet
 - ± More or Less
 - #5 Iron Rod 2' long
 - M Measured
 - PT Point of Tangency
 - ⊕ Test Pit by Others
 - 100 Contour 100 (Assumed Elevation)
 - Transmission Line Poles

I certify I am owner of this property.

Mabel Wilson

I certify that all bearings and distances
are correct to the best of my knowledge.

C.R. Storer

APPROVED BY THE TOWN OF CUMBERLAND
PLANNING BOARD

DATE

W. S. Mearns
John B. Worsley

5-17-83

5-17-83

Notes: 1. This subdivision contains 23.3 Acres ±.

PRELIMINARY

0 100 200 300
Graphic Scale in Feet

C.R. STORER, INC.
ENGINEERING - CONTRACTING
Poland Spring, Maine

PLAN
OF
MORRISON HILL ACRES
MABEL WILSON
Route #100 & Methodist Road
Cumberland, Maine

Scale: 1"=100' Date: 05/17/83

