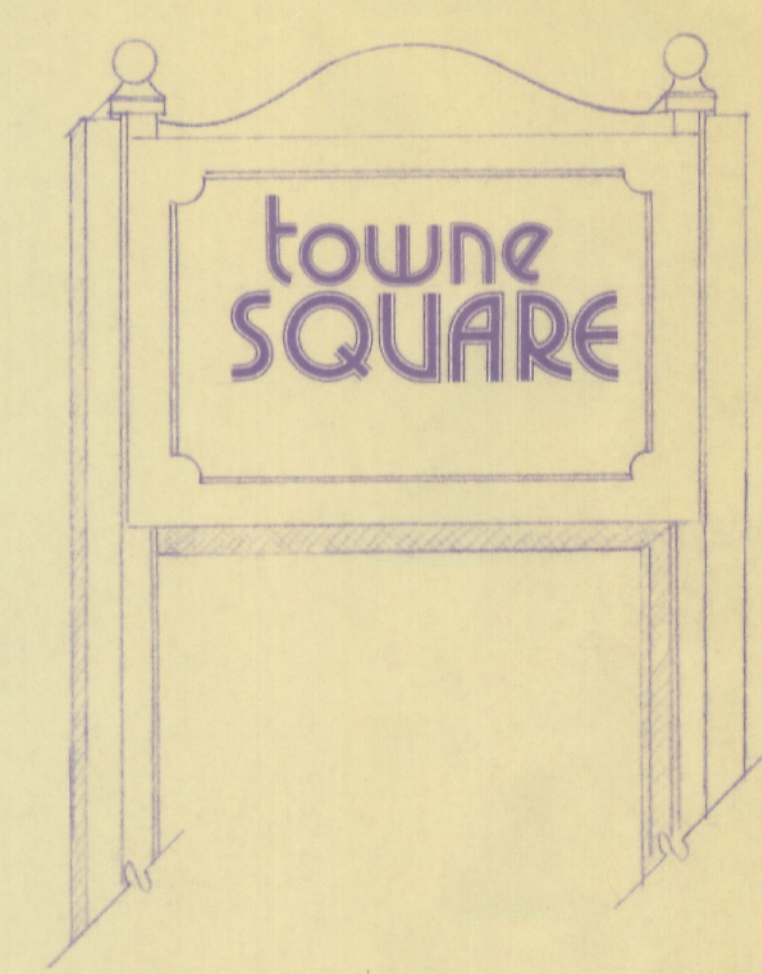


NOTES:

- ① SIGNAGE - INDIVIDUAL UNITS TO HAVE EQUAL ALLOCATION FOR SIGNAGE ON PANELS DESIGNED INTO FACADE AND COORDINATED W/EACH COLONIAL UNIT.
(SEE SIGNAGE DETAIL)
- ② LIGHTING - WALL MOUNTED FIXTURE WILL BE USED AT EACH ENTRANCE DURING BUSINESS HOURS (COLONIAL EXTERIOR FIXTURES). GENERAL PARKING LOT ILLUMINATION WILL BE PROVIDED W/400 W VESTINGHOUSE VAPOR-LIGHTS. (DURING BUSINESS HOURS)
- ③ PARKING - REQUIRED PARKING FOR COM - MERCHANDISE RETAIL AND OFFICE SPACE:
RETAIL AREA = 29,000 SF ∴ SPACES = 166 REQ'D
OFFICE AREA = 6,400 SF ∴ SPACES = 26 REQ'D
GROSS SPACES REQUIRED = 192

LOT SIZE 445' x 312' GROSS AREA = 138,840 SQ. FT.
ZONING: LOCAL BUSINESS DISTRICT

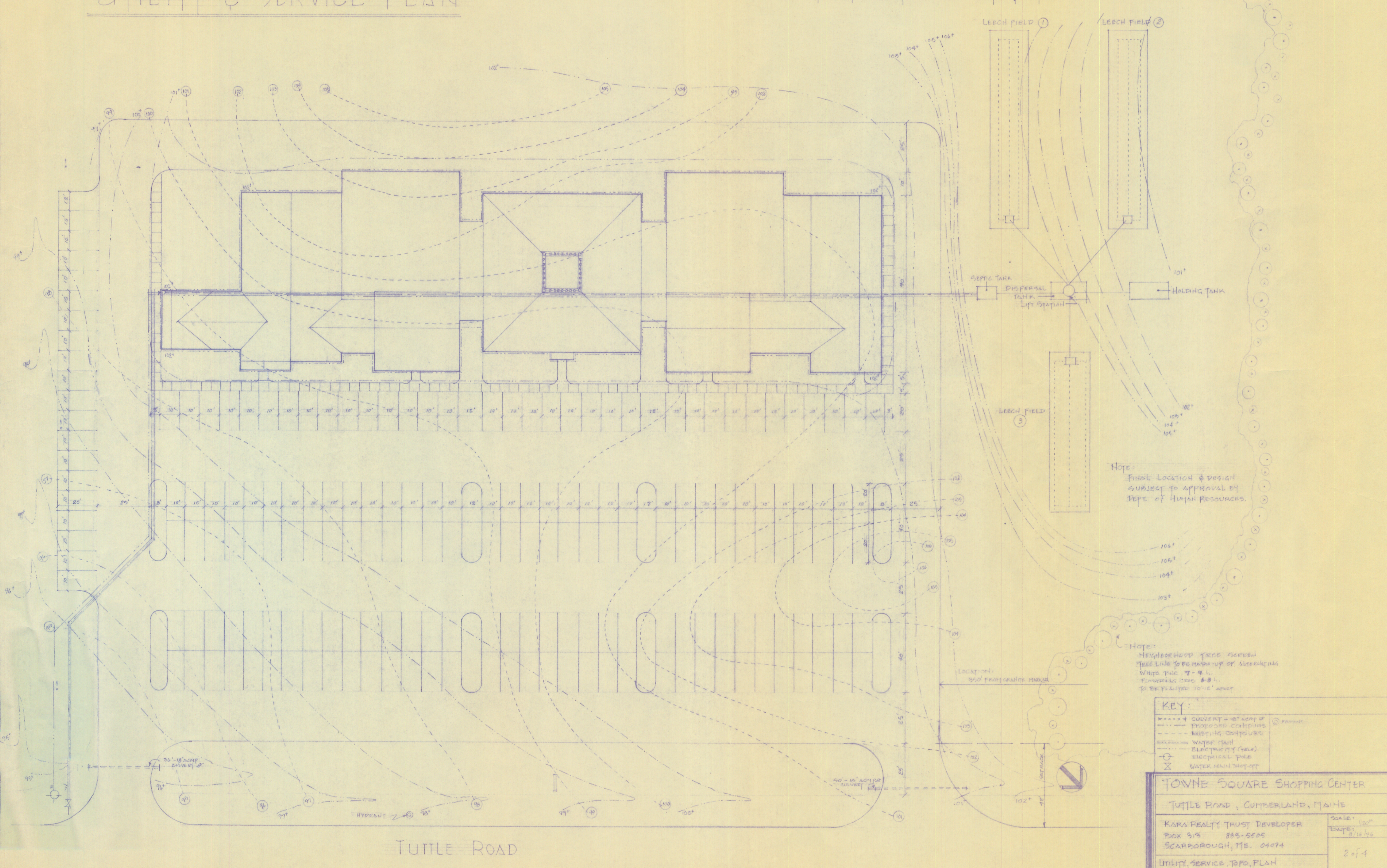


TYPICAL ENTRY SIGNAGE

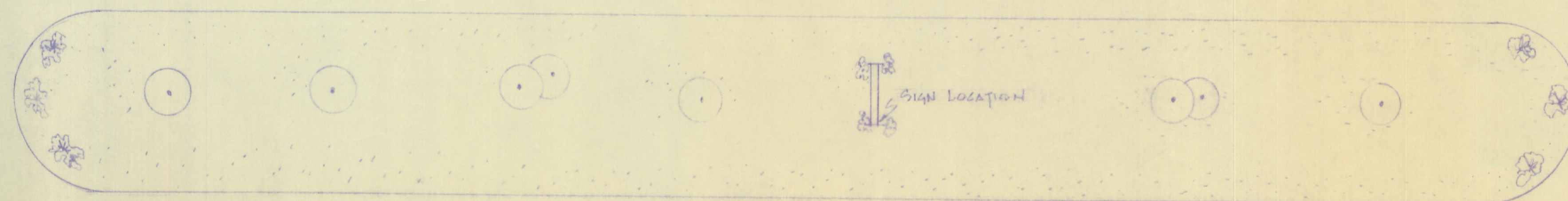
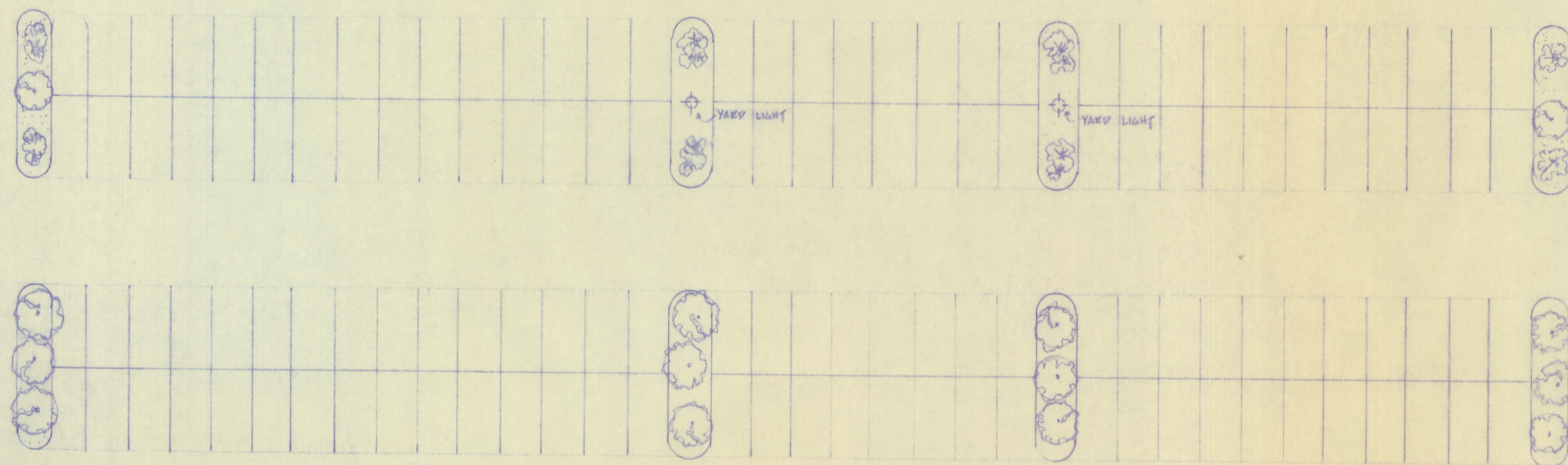
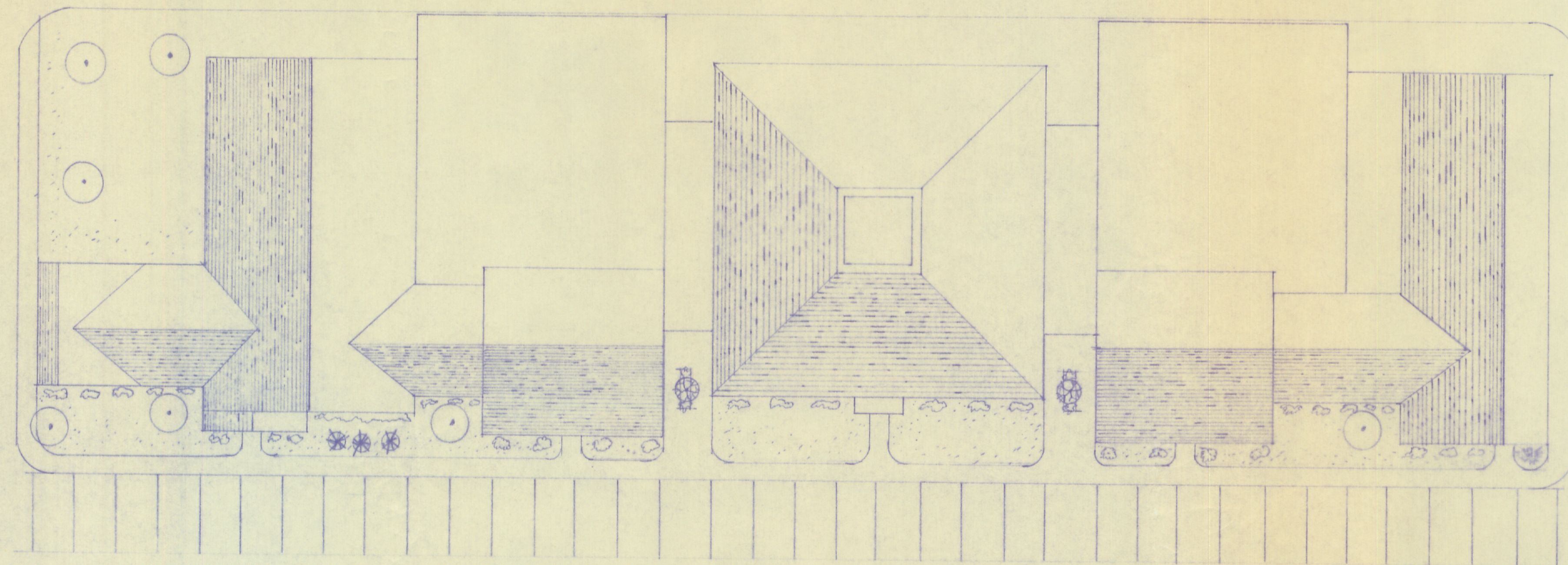
TOWNE SQUARE SHOPPING CENTER	
TUTTLE ROAD, CUMBERLAND, MAINE	
KARIS REALTY TRUST DEVELOPER	SCALE: 1/8" = 1'-0"
Box 919 888-5505	DATE: 8/1/76
SCARBOROUGH, ME. 04074	1 of 4
PRESENTATION PLAN AND ELEVATION	

UTILITY & SERVICE PLAN

SANITARY DISPOSAL SYSTEM



LANDSCAPE PLAN



KEY:

- | | |
|---------------------|-------------------------------------|
| WHITE PINE 12-14' | RHODODENDRON |
| FLOWERING CRAB 6-8' | JAPANESE YEW |
| SPRUCE 7-9' | RED MAPLE |
| JUNIPER | GRASS AREAS TO BE GRADED AND SEEDED |

TOWNE SQUARE SHOPPING CENTER

TITTLE ROAD, CUMBERLAND, MAINE

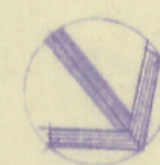
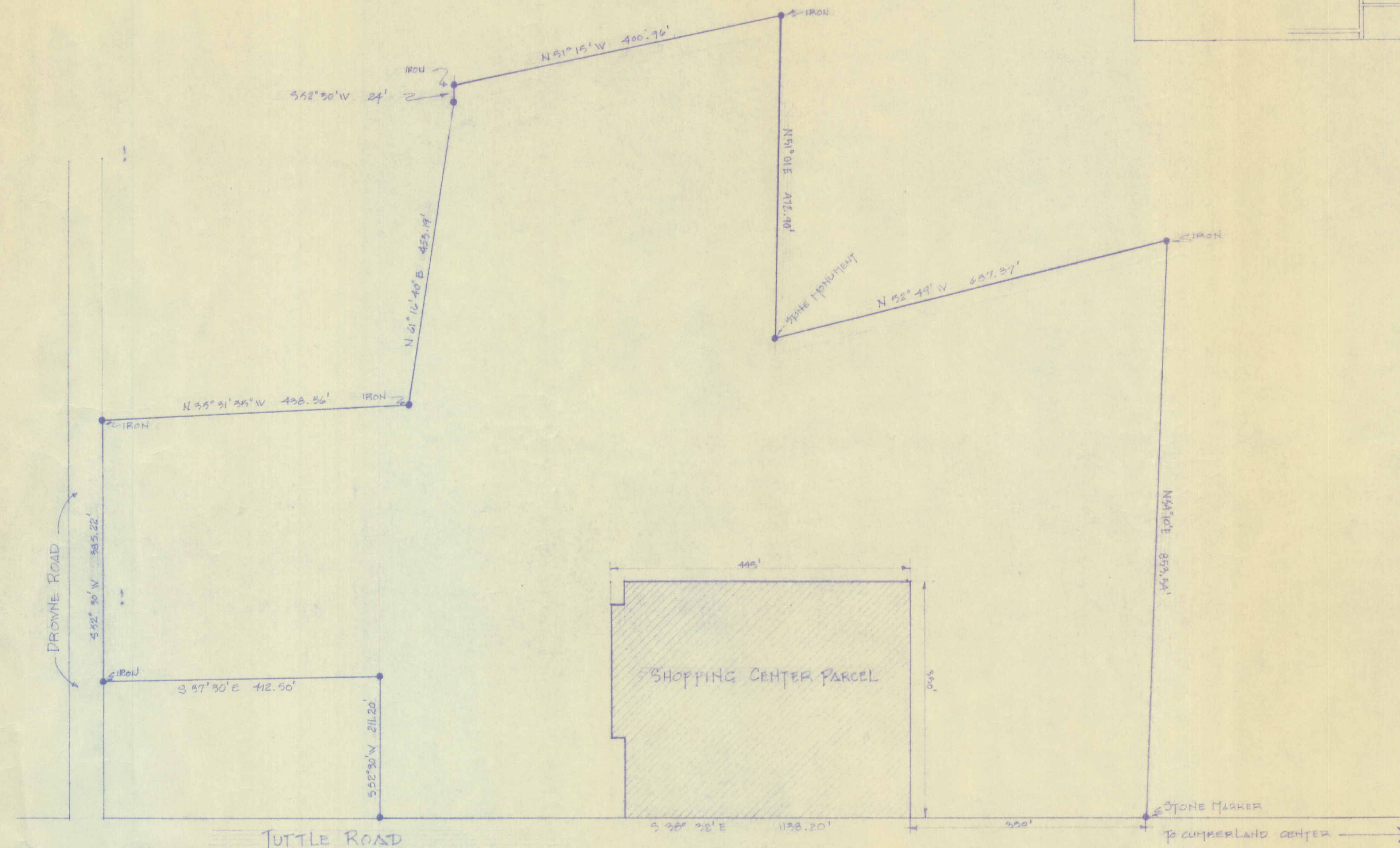
KARA REALTY TRUST DEVELOPER
PO BOX 313 888-5505
SCARBOROUGH, ME. 04074

SCALE:
DATE: 2/16/90

LANDSCAPE PLAN

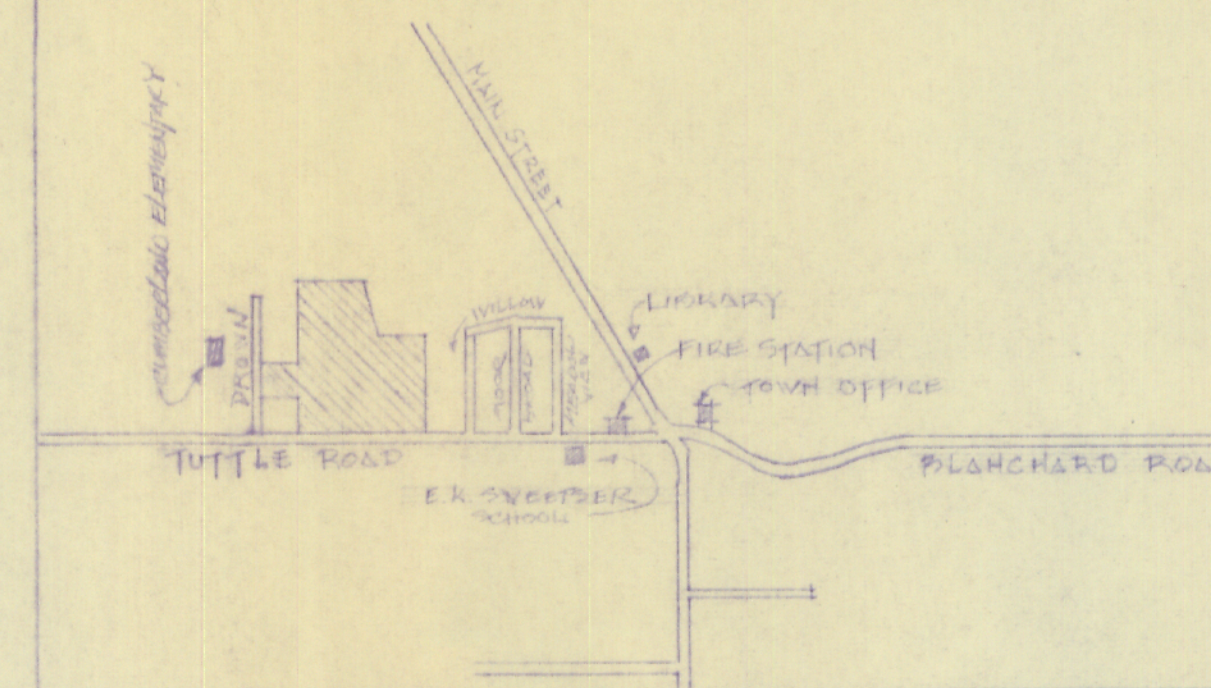
3 of 4

SITE LOCATION PLAN



SCALE: 1" = 100'

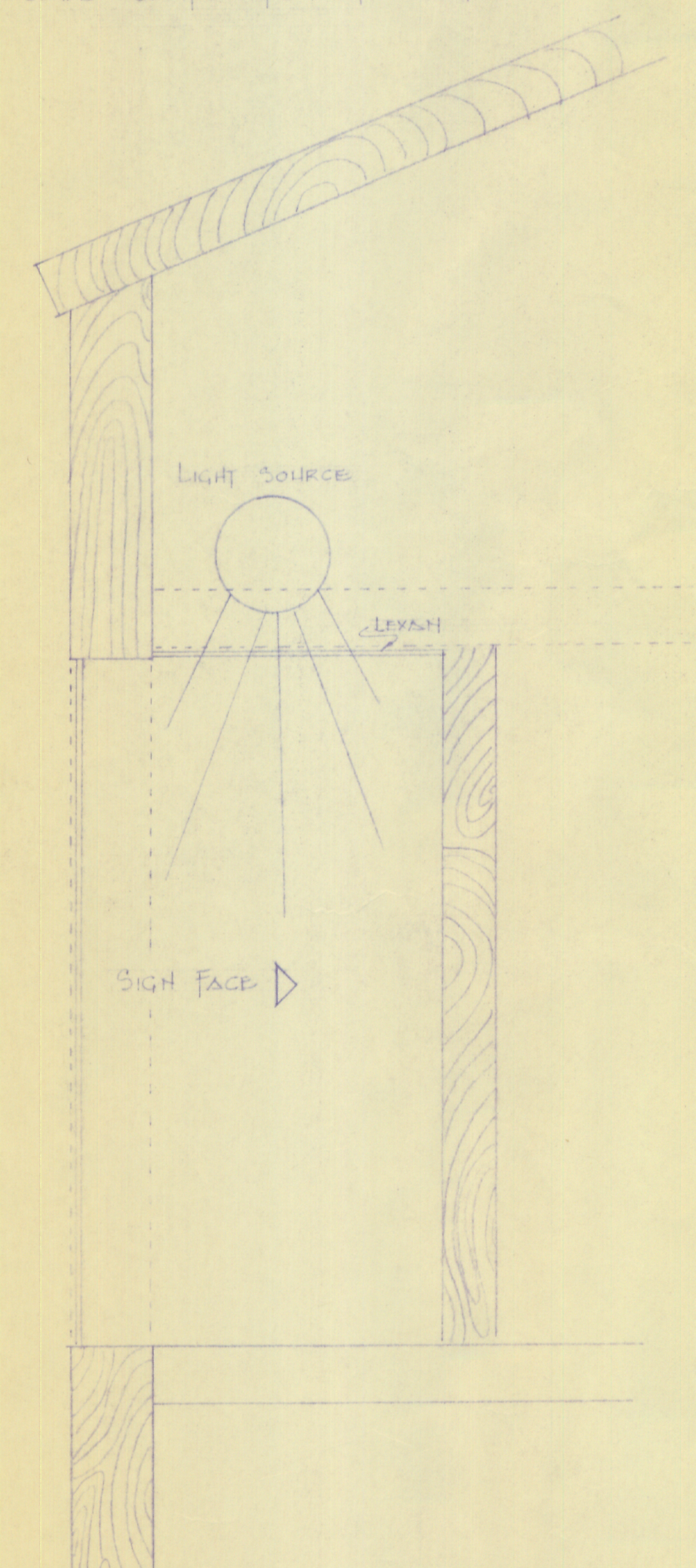
CUMBERLAND TOWN CENTER



SIGN DETAIL

DRUGGIST

SIGN ALLOCATION WILL BE INCORPORATE IN THE DESIGN OF EACH UNIT.



TOWNE SQUARE SHOPPING CENTER

TUTTLE ROAD, CUMBERLAND, MAINE

KARA REALTY TRUST DEVELOPER

Box 213 888-5505

SCARBOROUGH, ME. 04074

SITE LOCATION PLAN - SIGNAGE PERIOD

SCALE: 1" = 100'

DATE: 8-16-92

4 of 4