

Summertime in the Belgrades



... Serving the Central Maine Lakes & Kennebec River Corridor

— A Cider Mill Press Publication —

VOLUME 15, NUMBER 2

Yesteryear: Gettin' Here ...Getting Around

by Esther J. Perne

The time was yesterday. It was harder getting around. Or was it? Most people arrived in this part of Maine via Boston and Portland by train – arrived at Belgrade Depot or North Belgrade. They were met by hired wagons, transferred to their lodgings, and stayed put. The summer was on. Whatever they needed could be delivered – or done without.

Rails had come to the Belgrades in the 1840s. They dictated the development of towns, the establishment of businesses, the livelihood of the surroundings. Stores, hotels, livery stables, taverns and post offices clustered around the tracks. Tourism had nothing to do with these early developments. Apples and wood products rode the rails.

The Belgrade area was farming country. Farms meant fields, and fields meant views. The circumference of water was visible from many of the cleared hills. Farms bordered the rivers and great ponds and horses, cows, oxen and sheep grazed on the water's edge.

A daily stage ran from Augusta to New Sharon – a four-horse hitch. It changed horses at Belgrade. Traveling time from Belgrade to Augusta: one hour, no traffic. Freight was shipped up the Kennebec to Hallowell and hauled overland by oxcart to New Sharon and Farmington.

The early 1900s changed all that. A new breed of settler invaded the area. Sports and vacationers sought the lakes. Summer visitors arrived with suitcases, trunks, household pets, and even servants. The trip was a major undertaking but well worth it considering they were here to spend at least two months, usually three, some-



Stanley Steamer bus: An original Belgrade Lakes mountain wagon is in the collection and on exhibit at Seal Cove, Mt. Desert Island. Image from *Belgrade Lakes Guide*.

times four.

The vacationing visitors patronized the many sporting camps and hotels that sprang up throughout the area. Those who couldn't come themselves sent their children to benefit from a long, wholesome summer in Maine. By the 1930s

there were over 15 boys' and girls' summer camps in the area; there were 17 sporting or fishing camps and there were numerous hotels, some of them very grand. Special trains arrived in early summer with children for the youth camps – and

Continued on page 2

Mid-Maine Marine Inc.
885 Kennedy Memorial Drive, Oakland, ME 04963
1/2 Mile West of Exit 127 off I-95 • 1-800-649-2628
www.midmainemarine.com

Welcome Back!

Harris FlokBot

- See inventory,
- Used boats,
- Get quotes online

Pontoon Boat Packages to CELEBRATE Summer 2013

Wings Hill
Inn & Restaurant

Gourmet Dining
Culinary Institute Chefs
Casually Elegant Accommodations
Attentive Service

BELGRADE LAKES
www.wingshillinn.com
207-495-2400

CIRCA 1800

Paddleboards Sales & Rentals
Thule Car Racks (Installed)
#1 INDEPENDENT OLD TOWN DEALER IN THE WORLD

Old Town

DEMO POND

Kayaks and Canoes

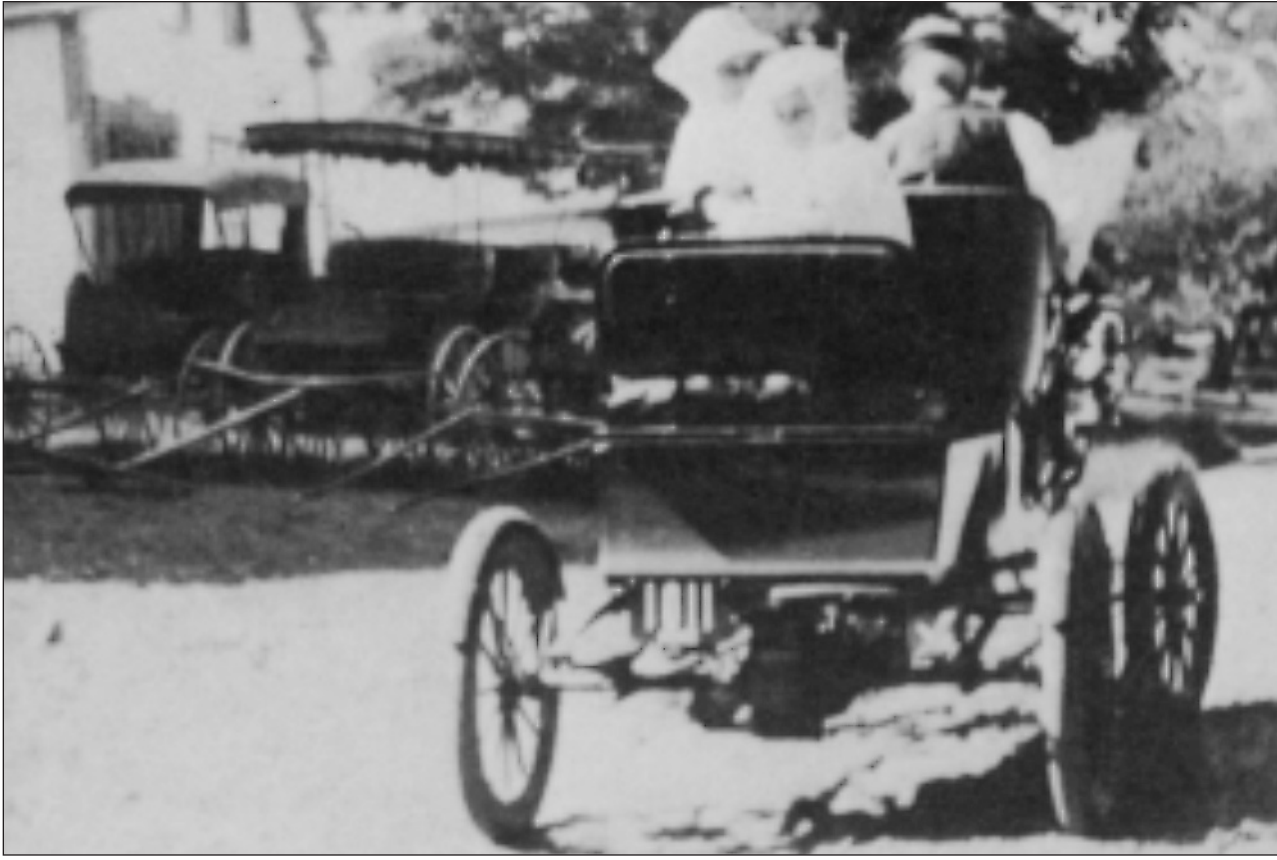
KAYAK & CANOE RENTALS
Great Selection of Paddles and Life Jackets
Belgrade Lakes and Stream Group Tours
Outlet Prices
• Old Town • Necky • Ocean Kayak

100's in Stock

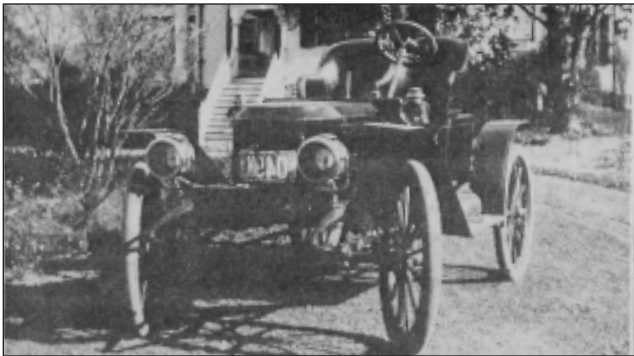
BELGRADE CANOE & KAYAK
Route 27 North, 9 Miles from Augusta Civic Center
495-2005



Continued from page 1



First Stanley Steamer in Belgrade, 1905.



Stanley Steamer car/taxi, popular in Belgrade in the early 1900's. Photo courtesy Stanley Museum, Kingfield.

returned them home in late August.

Although the railroad trip to the Belgrades was the basic pattern of arrival, there were other options. Until the early 1920s, trolleys ran all the way from Boston to Winthrop and from Augusta, Waterville, Skowhegan out of town to the lake resorts.

Trolley tracks also ran along the edge of the coastal beaches for miles – Salisbury, Hampton,

Portsmouth in N.H. and in Maine York, Kennebunkport, Old Orchard to Portland. At Portland the interurban ran to Lewiston and then another trolley to Winthrop – the end of the line. The trip was slow but fun – a good two days.

It was also possible to travel by boat from Boston to Gardiner. Coastal services from Boston included steamers such as the City of Rockland, a large wooden sidewheeler, which was an overnight trip: not a trip, an adventure.

Trolley tracks and coastwise routes are now only memories. As for regular train passenger service to the Belgrades, it stopped in 1949; there was still flag stop service until the late 1950s. In 1962 the Belgrade Depot station was torn down and in 1967 the foundation was removed.

In the beginning trains were met by horse-drawn carriages, for hire to complete the trip to the lakes –sometimes costing as much as \$1.25 per passenger. The roads were gravel, then turned to dirt finally became winding ruts with grass growing between the tracks made by wheels and hoofs.

Later taxis met the trains, the earlier (1905) ones being Stanley Steamers. There was even a Stanley Steamer bus traveling from the depot to Belgrade Lakes. In those days the Stanley Steamer traveled faster than the cars with gasoline engines, and the relative high speed and clouds of steam made the trip an adventure.

If a camp couldn't be reached by land, summer arrivals completed their trip by boat. Steamboats

Continued on page 3

RETAINING WALL BLOCK | COBBLESTONE | SLATE | INTERLOCKING PAVERS | CLAY BRICKS | POSTS | GRANITE STEPS | FIREPITS | CONCRETE BLOCKS

Beauty.
Quality.
Integrity.

GAGNE
HARDSCAPE & MASONRY CENTERS

Ask for it
by name.

8 Convenient Locations
Now offering our own line of durable
Maine made products featuring...

MAINE MADE
SINCE 1915

- Lifetime Warranty
- Traditional & Vintage Finishes
- 2 - 5pc Patterns
- Mix & Match Shape, Color, & Size

68 years of
knowledge &
experience etched
in stone

BELGRADE | AUBURN | WESTBROOK | SACO | KITTERY | NAPLES | TOPSHAM | HOLDEN | 1-800-339-3313 | www.gagneandson.com



*committed to
women...*

Inland Women's Health Care has two locations and seven providers ready to deliver superior OB/GYN care — from helping to welcome a new addition to your family at Inland's Birthing Center to well-woman checkups and state-of-the-art digital mammography at Inland Hospital. We also offer minimally invasive surgical procedures for treatment of heavy bleeding and urinary incontinence. Call either of our locations to find a provider who is just right for you!

Where YOU come first!

180 Kennedy Memorial Drive • Suite 204 • 207-872-5529
325E Kennedy Memorial Drive • 207-873-5665

Hamlin's Marine

Scout BOATS
The Power of Innovation

YAMAHA

- PONTOON BOATS • FISHING BOATS • SKI BOATS • RUNABOUTS • CRUISERS

Two Locations! Financing Available

290 West River Road,
Waterville • 207-872-5660

581 Main Road North,
Hampden • 207-907-4385

www.hamlinsmarine.com



Inland Women's Health Care
A Department of Inland Hospital

EMHS MEMBER

www.inlandhospital.org

TOGETHER We're Stronger



Table of Contents

Getting Here From There..... 1-2-3

Table of Contents..... 3

Upcoming: Awesome Activities in the Offing..... 4

Conservation: "Stop Milfoil" Update and Onward..... 5

Directory: Great Outings, Greater Visits 6-7

Calendar of Events: So Much To Do..... 8-9

Summer Solstice at Fieldstone Gardens..... 9

Hiking Mt. Phillip..... 9

Expressions: Finger Snappin' Blistered Fingers..... 10

Katy's Column: Miles of Quarters 11

Belgrades Watershed Map..... 12-13

Notebook: Town by Town What's Up, What's On..... 14

Cobbossee Corner: The 5K on the 4th 15

The Luckiest Boy: The Outboard Motor 16

Fishing with local guide Mike Guarino..... 17

Accommodations: Enjoy the Day, Spend the Night..... 18

Notebook continued; Petworld..... 18

Dining: Where Oh Where Shall We Eat?..... 19

The Small Garden Guide: Go Native, Plant Natives..... 19

Business Directory 20-21

Conservation Too: The High Tunnel Option..... 22

Belgrade's New Library..... 23

Continued from page 2



Belgrade Depot

plied the lakes like water taxis, carrying people to camps and hotels or taking passengers on a cruises of the lake.

Many summer residents had their own boats that were stored in town through the winter. The family boat was a part of camp life, second only to the camp itself. The easiest way to get around was by water and it was by water that campers sought the basics of camp life: food, kerosene, ice and sociability.

Public docks were available near towns (still are) where boats could be tied up while campers walked to the general stores, church, the post office, or even the movies. There was even a narrow gauge railroad in Belgrade Lakes to move boats between Long Pond and the Great Pond Stream.

In the early days milk was delivered by motorboat to camps – hopefully in time for breakfast. And mail was, too. The water route on Great Pond started about 1900 and endures today.

By the 1920s more and more summer people had their own cars. Neither the cars nor the roads were very dependable, but that didn't daunt the campers. Many of the side roads were one lane with no place to turn around, were unpaved, had large stones in the middle, and had clay surfaces which, if even slightly wet, caused a car to slip in every direction as it tried to move ahead.

If that weren't bad enough, the long drive from home to camp was a major challenge. Routes were not direct, there were no turnpikes, places to sleep were few and far between, and there were no roadside stands or stores or restaurants.

Some nights, still, when the wind is right it is possible to hear a train passing through Belgrade Depot, even from a great distance away. It is, of course, for freight, not for passengers. After all, people today have easier ways of getting around, getting' here. Or do they?



Summertime in the Belgrades

--A Cider Mill Press Publication--

PO Box 290, Belgrade Lakes, ME 04918

Editor: Esther J. Perne, 207-495-3777 • ebelnews@earthlink.net

Advertising Director: Erle Morse, 207-495-3777 • ebelnews@earthlink.net

Layout Design: Michael Breault, 207-578-0226 • mo.breault@gmail.com

Webmaster : Gregor Smith • gregor@roadrunner.com

www.sumbelnews.com

This publication is copyrighted ©MMXIII, Cider Mill Press Publications, All Rights Reserved.

Lakeside Landscape

Landscape Design and Installation

Come check our Retail Center

9AM-3:30PM Monday-Wednesday-Friday

- Planting (Trees, Shrubs)
- Mulch
- Walkways and Patios
- Erosion Mulch
- Retaining Walls
- Loam
- Natural Stonewalls
- Stone and Gravel
- Maintenance & Mowing
- Gravel
- Delivery available!!

Near junction of Routes 8 & 11

Phone: 207-465-3039

Cell: 207-831- 7053

E-mail:lakesidelandscape1@yahoo.com

13 Station Rd.

PO Box 407

Belgrade, ME 04917

NORTH BAY ESTATES

ROUTE 8 • NORTH BELGRADE

~ FOR SALE ~

Custom Built Homes

by Craig's Carpentry

1 & 2 acre lots

with lake views from

Great Pond overlook

Craig Alexander

cell (207) 649-3749 • crgsnbe@yahoo.com

TRAILSIDE Performance

Augusta Rd., Winslow, ME

207-873-2366

VISA

EASTERN TOWNSHIPS DOCKS

Boat Lifts Set Up and Delivery Available

Winslow, Maine

Special Pricing on Boat Storage and Shrink Wrapping Service

Huge Inventory of Trailers

Full Line of Husqvarna Power Equipment

Mission Trailers

Utility • ATV

Motorcycle • Cargo



— Upcoming —

JUNE

• Rock Against Lyme in honor of Bill Chinnock, a benefit to promote lyme disease awareness will be held on Saturday, June 22, 3-7 pm in the parking lot and 9 pm to 1 am in the night club, at T&B's Outback Tavern, Jefferson Street, Waterville.

• A Zero Waste World: Imagine That! Chewonki Natural History Program, Tuesday, June 25, 2 pm, sponsored by the Belgrade Regional Conservation Alliance at the Maine Lakes Resource Center, Belgrade Lakes. 495-6039

• The Theater At Monmouth will hold its first 2013 production, "The Velveteen Rabbit" Children's Show, on Saturday, June 22 at 7 pm and Saturday, June 29 at 1 pm. The "Black Fly Follies" will be performed on June 29 at 7:30 pm. 933-9999

• A public Italian Night, with a 4-course meal will be held on Saturday, June 29 from 5-7 pm at the Union Church in Belgrade Lakes. Donations are \$8 adults, \$3.50 youth 5-12 years of age, free for under 5 years.

• A Skate-a-ton will be held on Sunday, June 30 from 2-3 pm at the Ice Vault in Hallowell to raise funds for lights at the Petanque Courts in Mill Park in Augusta. Rental skates will be available for \$3. Prizes will be given away to the top three fundraisers

JULY

• Open House for the 25th anniversary of the

Belgrade Regional Conservation Alliance, 1-4 pm, Maine Lakes Resource Center, Belgrade Lakes. 495-6039.

• Celebrate the opening of the Alfond-Lunder Family Pavilion and the exhibition The Lunder Collection July 13, 2013 – June 8, 2014. Community Day Celebration Sunday, July 14. Colby College Museum of Art, Mayflower Hill, Waterville. 859-5600

• Talisker will perform at the Union Coffee House on Saturday, July 13 at 7 pm. These 6 talented musicians perform an eclectic mix of English and Irish fold music starting at 7 pm, followed by open mic. Union Methodist Church, downtown Belgrade Lakes.

• On Sunday, July 14, the PFBF, CPA's 4th annual _ Marathon, 5K Run-or-Walk will take place at 8 am in Oakland at FirstPark Drive. Proceeds benefit Special Olympics Maine. Race info and registration forms are available on www.pfbf.com or contact race director at 873-1603 or July 13, 4-6pm and race day 7 am. Volunteers are needed; contact deb@pfbf.com

• Maine Open Farm Day will be held on Sunday, July 21. 100 plus farms throughout Maine are open to the public for tours, demonstrations, samples and more. 287-3702

• A lecture, "Are Bats Offshore?" will be presented by Steve Pelletier, forester and wildlife biologist, on Thursday, July 25, sponsored by the Kennebec Land Trust, 377-2848, www.tkl.org

• Maine Quilts, 36th Annual Show will be July 26-28 at the Augusta Civic Center, Friday and Saturday, 9 am-5 pm, Sunday 10 am-4 pm. www.mainequilts.org, 425-4417

• The 30 Mile Watershed Association will hold its annual Paddle Trek from Mount Vernon Village to Wayne Village on Saturday, July 27 (rain date July 28), starting at 7 am at Lake Minnehonk. Shuttles will be available from 3 locations. Donations encouraged; pre-registration required: 293-2181, www.30mileriver.org

• Belgrade Fire & Rescue 7th Annual Auto Show will be on Sunday, July 28, rain or shine, next to Belgrade Central School in the Depot. Gates open at 8 am, awards at 2 pm, \$5 car and driver, \$3 spectators, kids under 6 free. 458-1837

AUGUST

• The Capital Y Tri, an adult spring and youth triathlon will be held at the Kennebec Valley YMCA in Augusta at 7 am on Saturday, August 3. Registration deadline is July 26. 622-9622

• The 11th Taste of Greater Waterville presented by the Mid-Maine Chamber of Commerce will be held Wednesday, August 7, 11 am-11 pm in downtown Waterville. 873-3315

• The 43rd Annual Golf Scramble to benefit United Way of Kennebec Valley will be held on Monday, August 12 at the Augusta Country Club. Sponsorships for Foursomes and Holes, or both, are available. To reserve, call 626-3400.



BE PREPARED FOR COMPANY™

- ◆ Patios and walkways
- ◆ Walls
- ◆ Natural Stone Thin Veneer
- ◆ Outdoor Kitchens & Grills
- ◆ Chicago Brick Ovens
- ◆ Big Green Egg Cookers
- ◆ Kayaks, Canoes & Accessories
- ◆ Stoves, Fireplaces & Inserts
- ◆ Free site evaluations & estimates

Visit our new retail location:
1078 Kennedy Memorial Dr. in Oakland



Lowest Prices on
Old Town Canoes & Kayaks!
Prices up to 25% off,
Blends also available

COUPON

FREE
Charcoal
with
purchase of
Green
Egg Cooker



SOMERSET STONE CENTER

1078 KMD, Oakland • 465-9800 • www.somersetstonecenter.com



Tree spirits
winery & distillery

Award winning wines and spirits made from local apples, pears and maple syrup. Look for us on the Maine Wine Trail.

152 Fairfield Street, Oakland, ME 04963
www.treespiritsofmaine.com



— Conservation — “Stop Milfoil” Awarded \$150,000 Grant



Invasive variable milfoil growing in Great Meadow Stream, Rome, Maine, July 2012. Almost 50,000 gallons of variable milfoil was removed from the stream and North Bay of Great Pond in 2012.



New England Milfoil workers in their DASH boat (Diver Assisted Suction Harvester) clearing invasive milfoil from Great Meadow Stream, July 2012.

The Belgrade Lakes Association has been awarded a \$150,000 matching gift grant from an anonymous foundation to fight the invasive

milfoil infestation in Great Meadow Stream and North Bay of Great Pond. The foundation will match all gifts that are

given to the Stop Milfoil Capital Campaign by October 31, 2013, matching dollar for dollar all donations from previous donors and on a 2 to 1 basis all donations from new donors.

The invasive milfoil is a threat to the entire Belgrade Lakes chain and community. Three new outbreaks were discovered in the fall of 2012 at the north end of Great Pond: Robbins Mill Stream, Swann’s Brook, and the Rome Trout Brook.

The plan of action for the summer of 2013 includes aggressive pulling by both the Belgrade Regional Conservation Alliance fieldwork team and the New England Milfoil professional milfoil mitigation company.

Everyone can help by checking boats and trailers and fishing gear for plants before putting boats in lakes and upon taking them out; by learning how to identify and report plants; by volunteering time; and by giving money.

There will be public meetings on Thursday, July 11 and Thursday, August 8 in Belgrade Lakes Village at 6:30 pm at the Maine Lakes Resource Center to report on the progress of the milfoil mitigation work and to answer questions.

A complete milfoil report is available in the Belgrade Lakes Association special edition newsletter at www.belgradelakesassociation.org. Calls for help and information may be made to the hotline at 512-5554. To make a donation go to the BLA website or send a check to Belgrade Lakes Association, PO Box 551, Belgrade Lakes, Maine 04918.

Purchases & Refinancing | Home Equity Lines of Credit & Second Mortgages | 10 to 30 Year Fixed Rate Mortgages

YOUR LOCAL LENDING SOURCE



Heather Ryan, Senior Loan Officer
NMLS # 407596
621 - 4920 x2323
hryan@mainestatecu.org

FOR 76 YEARS WE HAVE PROVIDED MAINE PEOPLE WITH HOME LENDING SERVICES AND LOW RATES. WE OFFER A WIDE VARIETY OF MORTGAGE OPTIONS AND WE LOOK FORWARD TO HELPING YOU FIND THE BEST LOAN TO MEET YOUR NEEDS.



(800) 540-8707
www.MaineStateCU.org

With our expanded membership eligibility, it's never been easier to join. Call us today.



Todd LaPlante, Mortgage Loan Officer
NMLS # 407682
621 - 4920 x2315
tlaplante@mainestatecu.org



Calendar Directory

TOWN BY TOWN...

GREAT VISITS, AWESOME OUTINGS – INCLUDING ART, MUSIC, CULTURE, HISTORY, RECREATION, FARMERS' MARKETS, TRAILS, SCENIC SITES AND MORE...

AUGUSTA

- Arboretum, 6 miles of year round walking trails open dawn to dusk, Visitor Center open Mon-Fri 9 am-4 pm, **Viles Arboretum**, 626-7989, vilesarboretum.org, 153 Hospital St.
- **Farmers' Market at the Arboretum**, indoors, Friday 1-5 pm

Capitol Complex, 230 State Street

- **Maine State House**, Hall of Flags, House and Senate Rooms, Klir Beck dioramas, Mon-Fri 8 am-5 pm, book tours at Maine State Museum, walk-ins welcome 9 am-1 pm, 287-5600, www.maine.gov
- **Art in the Capitol**, Maine Arts Commission monthly self-guided exhibits in State House hallways (Mon-Fri 8 am-5 pm), Blaine House (call for times), and Maine Arts Commission Office (8:30am-4:30 pm), 287-6746, mainearts.maine.gov
- **Governor's Mansion**, 1830 Blaine House, Tue-Thu 2-4 pm, 287-2121, www.blainehouse.org
- **Maine State Museum**, Tue-Fri 9 am-5 pm, Sat 10 am-4 pm, \$2 adults, \$1 ages 6-18, 287-2301, www.maine-statemuseum.org
- **Maine State Library**, Mon-Sat opens 9 am, 287-5600, www.maine.gov/msl/

Riverfront/Downtown/Water Street

- **Old Fort Western**, 1754 fort, house, store, 1-4 pm daily, admission \$6, 4-14 years \$4, 626-2385, www.oldfortwestern.org Cony St.
- **Riverfront Park**, boat launch, Greenway Trail, playground, eastside Kennebec River
- **Kennebec River Rail Trailhead**, Maine State Housing Authority parking lot, 623-8162, www.krrt.org, Water St.
- **Museum in the Streets**, walking/history tour, www.augustamaine.gov, downtown.
- **Farmers' Market at Mill Park**, Tues 2-6 pm, 626-2305, www.farmersmarketmillpark.org/, North Water St.
- **Farmers' Market at Turnpike Mall**, 549-5112, Wed and Sat 10 am-1 pm, Western Ave.

University of Maine at Augusta, University Drive

- **Danforth Gallery**, Jewett Hall, art exhibits, UMA-1234, www.uma.edu
- **Holocaust and Human Rights Center of Maine**, Michael Klahr Center, Mon-Fri 8 am-4 pm, 621-3530, www.hhrc.uma.edu
- **UMA Fitness Trail**, 2 miles of wooded trails, near Civic Center

BELGRADE LAKES

- **Great Pond Mailboat**, 215-7520, Mon-Sat, 10 am, Post Office, Main St.
- **Spring Gallery**, cast bronze display at MLRC, 495-3113, www.springgallerymaine.com, 171 Main St.
- **The Belgrade Community Center for All Seasons**, swimming, gym, playground, picnic area, rec programs, library, 495-3481, www.belgrademaine.com 1 Center Dr.
- **Union Church Coffee House**, check for schedule, 7:30 pm, \$5, 495-3599, www.unionchurchmaine.org, Main St.
- **Belgrade Historical Society**, monthly meetings, 465-7924
- **Farmers' Market**, Sun 8 am-1 pm, Thu 2-6 pm, 465-7058, www.belgradelakesfarmersmarket.org, Main St.
- **Peninsula Park on Long Pond**, picnic tables, Main St.
- **Maine Lakes Resource Center**, 512-5150, www.minelakesresourcecenter.org, 171 Main St.

FAIRFIELD

- **Fairfield Historical Society**, 1890 Cotton-Smith History House, Tue 9 am-12 noon, 1-4 pm, 453-2998, www.fairfieldmehistoricalociety.net, 42 High St.
- **Farmers' Market**, 948-5724, Wed 2-6 pm, Sat 9:30 am-1:30 pm, Nazarene Church parking lot, 81 Main St.

FARMINGTON

- **Farmington Historical Society**, 778-2835, Wed and Sat, 11 am-2 pm, July-August, 118 Academy St.
- **Nordica Homestead Museum**, opera singer Lillian Nordica costumes, jewelry, mementos, 778-2042, Tue-Sat 10 am-12 n and 1-5 pm, Sun 1-5 pm, www.lilliannordica.com, 116 Nordica Lane, Holley Rd.
- **Contra Dance**, 491-9928, www.starleft.org 2nd Sat of the month, all welcome, 6:30-7:30 pm family dance, 8-11 pm regular dance, admission, Grange Hall, Bridge St, Rt 43, West Farmington
- **University of Maine campus and Arboretum**, four walking tours with informal guide pamphlet to campus trees, 581-1541, www.umaine.edu/arboretum/, downtown
- **Farmers' Market**, 778-6602, Fri 9 am-2 pm, Better Living Center parking lot, Front St; Saturday 8 am-12 noon, Main St.
- **Meetinghouse Park and Gazebo**, weekly concerts throughout summer, downtown
- **Fairgrounds**, events throughout summer, Franklin County Fair in Sept, High St.

Gardiner

- **Artdogs and Circling the Square Fine Art Press**, 1-5 pm Fri, 10 am-4 pm Sat, 582-2108, www.theartdogs.com, 275-277, Water St.
- **Johnson Hall Performing Arts Center**, 582-7144, www.johnsonhall.org 280 Water St.
- **Monkitree**, art exhibits, Tues-Fri 10 am-6 pm, Sat 12-6 pm, 512-4679, 263 Water St.
- **Farmers' Market**, 582-3100, www.gardinerfarmersmarket.org, Wed 2-6 pm, rain or shine, The Common
- **Kennebec River Rail Trail**, 623-8162, www.krrt.org, access near Gardiner/Randolph Bridge, 6.5 miles to Augusta
- **Waterfront Park**, picnicking, events throughout summer,

Kennebec River

- **The Center for Maine Craft**, 9 am-6 pm daily, 588-0021, www.maine-crafts.org, West Gardiner Service Plaza, Route 126 off Routes 95 and 295

GREENE

- **Araxine Wilkins Sawyer Memorial**, free entertainment programs, monthly - Fri 2 and 7 pm, 946-5311, www.sawyer-foundation.com, 371 Sawyer Rd, off Rt 202

HALLOWELL

- **Harlow Gallery**, Kennebec Valley Art Association, 622-3813, www.harlowgallery.org Wed- Sat, open 12 pm, 160 Water St.
- **Gaslight Theater**, 626-3698, www.gaslighttheater.org City Hall, 1 Winthrop St.
- **Museum in the Streets**, history/walking tour, www.historichallowell.org, downtown
- **Farmers' Market**, 622-1350, Sun 3-6 pm, Water St.
- **Vaughn Woods**, 166 acre park/trails, Middle St.
- **Kennebec River Rail Trail**, www.krrt.org, to Augusta, Farmingdale/Gardiner, Water St.
- **Waterfront Park**, weekly summer concerts, Tues 7 pm, North Water St.

HINCKLEY

- **L.C. Bates Museum** at Good Will-Hinckley School, early 20th century natural history and cultural exhibits, nature trails and camps, adults \$3, up to 17 years \$1, 238-4250, www.gwh.org Wed-Sat 10 am-4:30 pm, Sun 1-4:30 pm, Rt 201

KINGFIELD

- **Reinhart Gallery Art Center**, 266-8458, 245 Main St, www.ianreinholt.com/gallery.html
- **Ski Museum of Maine**, by appointment, 265-2023, 256 Main St, www.skimuseumofmaine.org
- **Stadler Gallery**, 265-5025, 12-4 pm daily or by appointment. 225 Main St, www.stadlergallery.com
- **Stanley Museum**, 265-2729, www.stanleymuseum.org, memorabilia/displays on photographs, violins and Stanley Steamers, Tue-Sun 1-4 pm, 40 School St.

LIVERMORE

- **Washburn-Norlands Living History Center**, 18th-19th century mansion/farmstead/schoolhouse, library, chapel, 897-4366, www.norlands.org, admission, living history tours Tue and Thu 1-4 pm, 290 Norlands Rd.

MADISON

- **Lakewood Theater**, Maine's Summer Theater, Young Performers Camp, 474-7176, www.lakewoodtheater.org, Rt 201
- **Skowhegan School of Painting and Sculpture**, 474-9345, www.skowheganart.org, summer evening artists lecture series, East Madison Rd.

MONMOUTH

- **Monmouth Museum**, local and regional Maine history, Wed-Sun 1-4 pm, 933-2287, www.monmouthmuseuminc.org, 751 Main St.



Elliot B. Thayer, PLS, PE
Andrew Dunbar, PLS, LPF, LSE
 e-LOMA SPECIALIST FOR
 QUICKLY ADDRESSING
 FLOOD STATUS ISSUES
 17 Hasson Street
 Farmingdale, ME 04344
 582-7762
www.thayereng.com

G & L CONTRACTING

New Construction, Additions, Renovations

Dock Installation and Construction

Fully Insured, Experienced

info@gandlcontractingmaine.com
gandlcontractingmaine.com

207-495-9009

PAUL HANNA'S PLUMBING



207-495-3805

New Homes and Remodels ~ Camps
 Water and Sewer Pumps ~ Water Filtration
 Paul Hanna, Licensed Master Plumber



• **The Theater At Monmouth**, The Shakespeare Theater of Maine, Cumston Hall, 933-9999, www.theateratmonmouth.org, Main St.

MOUNT VERNON

- **D.E.W Animal Kingdom, Zoo**, 293-2837, www.dewanimalkingdom.com, Tue-Sun 10 am-5 pm, \$10, 918 Pond Rd, Rt 41
- **Villages Market**, farmers/crafters, Sat 10 am-2 pm (start 6/29), next to Flying Pond Store, sharihamilton@gmail.com, Rt 41

NEW PORTLAND

- **Nowetah's American Indian Museum and Craft Shop**, 628-4981, daily 10 am-5 pm, free, 628-4981, 2 Colegrove Rd, Rt 27, www.nowetahs.webs.com/
- **Wire Bridge**, 1864, probably only wire suspension bridge in U.S., off Rt 27

NEW SHARON

- **Farmers' Market**, Sat 9 am-1 pm, Douin's Market, 491-9025, 150 Mercer Rd, Rt 2

NORRIDGEWOCK

- **Norridgewock Historical Society Museum**, 1838 building, Sat 10 am-3 pm, 634-5032, www.norridgewock.com, Mercer Rd, Rt 2
- **Oosoola Park**, picnic area, great playground, boat launch, on Kennebec River, Rt 8

OAKLAND

- **Macartney House Museum**, Oakland Area Historical Society, 465-7549, Wed 1:30-4:30 pm, 1815 home with antique furnishings and Oakland artifacts, 25 Main St.

READFIELD

- **Readfield Historical Society and Museum** in 1823 school-house, 685-4662, www.readfieldhistorical.org, Thu and Sat 10 am-2 pm or by appointment, Rt 17, Readfield Depot

ROME

- **Mt. Philip Grange**, suppers 3rd Sat of month, 4:30-6 pm, all you can eat beans, cornbread, rolls, chop suey, pies, Rts 135/225
- **Trails: Mount Philip** on Rt 225; **The Mountain** on Rt 27; **French's Mountain** and **Kennebec Highlands**, Watson Pond Rd; 495-6039, www.belgradelakes.org, maps available at BRCA, Belgrade Lakes

SIDNEY

- **New England Music Camp**, concerts free and open to the public, famous Bowl-in-the-Pines on Lake Messalonskee, 465-3025, www.nemusiccamp.com, Rt 23
- **Sidney Historical Society**, 547-3142, <http://www.rootsweb>
- **Silver Spur Riding Club**, horse shows, www.silverspurmaine.com/, River Rd/Rt 104

SKOWHEGAN

- **Margaret Chase Smith Library**, residence, home, museum

exhibits, 474-7133, www.mcslibrary.org, free, Mon-Fri 10 am-4 pm. 54 Norridgewock Ave.

- **History House Museum**, 1800s local history and culture, 474-6632, www.skowhegan.com/historyhouse, Tue-Fri 1-5 pm, Elm St.
- **Fairgrounds**, weekly horse shows/competitions at covered arena, Skowhegan State Fair in Aug, 474-3621, Madison Ave.
- **Farmers' Market**, Wed 3-6 pm, Sat 9 am-1 pm, weekly entertainment, 938-3906, Somerset Gristmill parking lot, downtown

SMITHFIELD

- **Fairview Grange** suppers, 362-2791, every Wed in summer, 5 pm, Village Rd, Rt 8
- **Sunbeam Roller Rink**, Wed, Fri, Sat 7-10 pm, 362-4951, 830 Village Rd, Rt 8
- **Sunset Camps**, public beach, 362-2611, www.sunsetcamps.com, Village Rd, Rt 8

UNITY

- **Unity College Centre for the Performing Arts**, folk genre music, 568-3147, www.unitymaine.org, 42 Depot St.

WATERVILLE

- **Aqua City Actor's Theatre (ACAT)**, 873-7000, www.acattheatre.org. Waterville Opera House Studio Theater, Main St.
- **Museum in the Streets**, downtown history/walking tour, www.the.museum.in.the.streets.com/waterville.htm
- **Two Cent Bridge**, historic foot bridge over Kennebec River, Head of Falls park/events area, Front St.
- **Colby College Museum of Art**, 859-5600, www.colby.edu/museum/ Tues-Sat 10 am-4:30 pm, Sun 12-4:30 pm, free, Colby College Campus, Mayflower Hill
- **Thomas College Art Gallery**, 180 West River Rd.
- **Waterville Historical Society Redington Museum**, 1814 home, pharmacy, 872-9439, www.redingtonmuseum.org. Tue-Sat tours at 10 and 11 am, 1 and 2 pm, 62 Silver St.
- **Waterville Opera House**, 873-7000, www.operahouse.com, 93 Main St.
- **Farmers' Market**, Thu 2-6 pm, 680-2055, www.watervillefarmersmarket.org. The Concourse parking lot.

WAYNE

- **Farmers' Market**, 873-7000, <http://waynefarmersmarket.weekly.com>, Sat 9 am-noon, Town Green, next to Post Office, Main St.

WILTON

- **Wilton Farm & Home Museum**, 645-2091, 645-4578, www.wiltonmaine.org, Sat 1-4 pm or by appointment, Canal St.

WINTHROP

- **Norcross Park**, playground, picnic site, boat launch on Maranacook Lake, downtown.
- **Farmers' Market**, 395-4244, www.camarkets.com, Tue and Sat 9 am-1 pm, parking lot, downtown,



ASSOCIATIONS/GROUPS

THE BELGRADES...

- **East Pond Association**, Smithfield/Oakland, www.eastpond.org
- **North Pond Association**, Smithfield/Rome/Mercer, www.northpond.net
- **McGrath Pond/Salmon Lake Association (MP/SL)**, Belgrade/Oakland, RR 2, Box 2800, Belgrade, 04917, 465-3983, www.salmonlake.org
- **Great/Long Ponds: Belgrade Lakes Association (BLA)**, Belgrade/Rome/Mount Vernon, PO Box 551, 171 Main Street, Belgrade Lakes, 04918, 512-5150, www.belgradelakesassociation.com
- **Friends of Messalonskee Lake Watershed**, Oakland/Belgrade/Sidney, PO Box 532, Oakland, 04963, 547-3710, www.snowpond.org
- **Belgrade Regional Conservation Alliance and BRCA Conservation Corps**, PO Box 250, 171 Main Street, Belgrade Lakes, 04918, 495-6039, www.belgradelakes.org
- **Belgrade Lakes Region Business Group (BLRBG)**, PO Box 596, Belgrade Lakes, 04918, 495-3700, www.belgradelakesmaine.com
- **Maine Lakes Resource Center/Docks to Doorways**, PO Box 431, 171 Main Street, Belgrade Lakes, 04918, 495-3617, 620-6029, www.minelakesresourcecenter.org

BEYOND...

- **Maine Congress of Lake Associations (COLA)**, PO Box 426, 171 Main Street, Belgrade, 04917, 1-855-463-2652, www.mainecola.org
- **Friends of the Cobbossee Watershed**, PO Box 5003, Augusta, 04332-5003, 621-4100, www.watershedfriends.com
- **Franklin County Soil & Water Conservation District**, 107 Park St, Farmington, 04938, 778-4279, www.franklin-cswcd.org
- **Kennebec County Soil & Water Conservation District**, 21 Enterprise Dr, Augusta, 04330, 622-7847, ext. 3, www.kcswcd.org
- **Kennebec Land Trust (KLT)**, PO Box 261, 134 Main St, Winthrop, 04364, 377-2848, www.tkltr.org
- **Kennebec Messalonskee Trails**, PO Box 2388, Waterville, 04903, 873-6443, www.KMTrails.org
- **Kennebec River Rail Trail**, PO Box 2195, Augusta, 04338, 623-8162, www.krrt.org
- **30 Mile River Watershed Association (30 MRWA)**, Kimball Pond in Vienna to the Androscoggin River, PO Box 132, Mt Vernon, 04352, 670-7298, www.30mileriver.org
- **Parker Pond Association**, Mount Vernon/Vienna. www.parkerpond.org
- **Central Maine chapter of the New England Mountain Bike Association (CeMeNEMBA)**, 441-6227, www.cemenemba.org



Additions/Updates/Corrections: Please contact Summertime in the Belgrades with any changes to this Directory.



622-6353

Cut to order
in lengths from 14" to 23"

Green Certified Wood, Seasoned, & Ash
Cut, Split & Delivered

853 Civic Center Drive, Augusta, ME 04330



BELGRADE BOAT STORAGE

FREE LAKESIDE BOAT PICKUP & DELIVERY

DARE TO COMPARE
Best Prices on Inside, Outside Boat Storage.
Shrinkwrapping & Winterization

Craig Pooler
Cell 207-314-3287 • Office 207-495-3421
Email: cpooler1@myfairpoint.net
www.BelgradeBoatStorage.com

WATCHES • DIAMONDS
EXPERT WATCH REPAIR • STONESETTING • GOLDSMITHING

Larsen's Jewelry
SERVING YOU SINCE 1962



57 MAIN STREET
WATERVILLE, MAINE 04901

MARK A. LARSEN

207-872-6301
1-800-697-1874



— Calendar —

Through Saturday 6/15 - "Self-Help," comedy, 474-7176, Lakewood Theater, Route 201, Madison.

Friday 6/14 and Saturday 6/15 - Maine Horse Association 34th Annual Downeast Horse Show, covered arena, concessions available, free admission, Skowhegan Fairgrounds, Madison Avenue, Skowhegan.

Friday 6/14 through Sunday 6/16 - Trek Across Maine, 3 days, 180 miles, to benefit the American Lung Association, ages 7 years and older and all experience levels welcome, lungme.org, 1-888-241-6566, Bethel to Belfast.

Friday 6/14 through Sunday 6/16 - "No Sex Please, We're British," hilarious comedy, Gaslight Theater, reservations at www.gaslighttheater.org or 626-3698, 1 Winthrop Street, Hallowell.

Friday 6/14 - Celtic and American Country Music, Emery Hutchins and Jim Prendergast, free, air conditioned, 2 and 7 pm, 946-5311, Araxine Wilkins Sawyer Memorial, 371 Sawyer Road, Greene.

Friday 6/14 - Artists' Reception, "Chaos to Quiet: Deconstructing Complexity," by John Carnes, 5-9 pm, free and open to the public, exhibit running through June 27, Monkitree, 263 Water Street, Gardiner.

Saturday 6/15 - Fourth Annual Yard Sale sponsored by the Friends of the Belgrade Public Library to benefit the new library, 9 am-1 pm, 495-2101, Day's Real Estate, Route 27, Belgrade Lakes.

Saturday 6/15 - Smithfield Historical Society monthly meeting 9:30 am, Open House 11 am-1 pm, 362-5340, 634-4392, the Groves House, 21 Lakeview Drive, Smithfield.

Saturday 6/15 - "Looking Back at our World's Cultures," exhibit opens; explore photos of late 19th century, a time of exploration and travel, 1 pm, 238-4250, L.C. Bates Museum, Route 201, Hinckley.

Saturday 6/15 - American Cancer Relay for Life, Somerset County, 1-800-ACS-2345, Fairgrounds, Route 201, Skowhegan.

Saturday 6/15 - 16th Annual Garden Party, to benefit Hospice Volunteers of Waterville Area, 10 am-3 pm, includes workshops and tours, children's activities, live music, lunch, reservations recommended 873-3615, Fieldstone Gardens, Vassalboro.

Saturday 6/15 - Public baked bean supper, all you can eat, 3 kinds of beans, chop suey, hot dogs, coleslaw, bread, homemade pies, 4:30-6 pm, tickets \$7, under 5 free, family of 4 or more \$20, Mt. Philip Grange, Routes 225 and 27, Rome.

Sunday 6/16 - Father's Day!!!

Monday 6/17 and Tuesday 6/18 - Watercolor class with Kay Morris, 2-4 pm, also June 24 and 25, 622-3813, Harlow Gallery, 160 Water Street, Hallowell.

Monday 6/17 through Friday 6/21 - Nature Camp, special weekday program for children of all ages, different topic each day, 9 am-12 noon, 238-4250, L.C. Bates Museum, Route 201, Hinckley.

Monday 6/17 - Old Crow Band, 7-9:30 pm, Meetinghouse Square, downtown Farmington.

Tuesday 6/18 - Outdoor Concert, free, 11:30 am-1 pm, Meetinghouse Park Gazebo, downtown Farmington.

Tuesday 6/18 - Rock on the River, 7-8:30 pm, 620-7477, Riverfront Boardwalk, North Water Street. Hallowell.

Tuesday 6/18 - "The Maine Warden Service," with visiting Maine Warden, Col. Joel Wilkinson, sponsored by the Belgrade Regional Conservation Alliance, 7 pm, 495-6039, Maine Lakes Resource Center, Belgrade Lakes.

Wednesday 6/19 through Thursday 7/4 - Whatever 2013 Family Festival and Day in Capitol Park, sponsored by the Kennebec Valley Chamber of Commerce, 36th annual celebration, activities and events for all ages, 623-4559, www.augustamaine.com,

greater Augusta area.

Wednesday 6/19 - Mt. Phillip Hike with Margaret Pietrak, sponsored by the Belgrade Regional Conservation Alliance, pre-registration required 495-6039, meet at trailhead on Route 225, Rome.

Wednesday 6/19 - Waterfront Wednesday concert, "Yellow Brick Road, An Elton John Tribute," children's activities, food, door prizes, vendors, free admission, 6 pm, Waterfront Park, Water Street, downtown Augusta.

Wednesday 6/19 - "Maine's Side Paddle Steam Boats," by George Barrett, sponsored by Kennebec Historical Society, 622-7718, 6:30 pm, Christ Church, Gardiner.

Thursday 6/20 through Sunday 6/23 - "The Game's Afoot," murder/comedy, 474-7176, Lakewood Theater, Route 201, Madison.

Thursday 6/20 through Sunday 6/23 - The 40th Blistered Fingers Family Bluegrass Music Festival, a dozen great bands, giant tent, food, camping areas, fun, children love bluegrass - great family event, 873-6539, Fairgrounds, Litchfield.



"No Sex Please, We're British," hilarious comedy, Gaslight Theater, reservations at www.gaslighttheater.org or 626-3698, 1 Winthrop Street, Hallowell.

MAINE~LY ELDER CARE

"Caring for the ones who cared for us"



In - Home Nursing • Personal Care Services • Homemakers
• Emergency Response Systems • Transportation Services

STATE REGISTERED PERSONAL CARE
AND HOME MAKER AGENCY

465-3249

28 Center St., Oakland, Me 04963

www.Maine-lyElderCare.com

denise@Maine-lyElderCare.com

DAY'S REAL ESTATE

"The Waterfront Specialists" 207-495-3111

262 Augusta Road (Route 27) • Belgrade Lakes, Maine 04918 • 888-495-3111

Web: www.daysrealestate.com • e-mail: daysrealestate@roadrunner.com



PARKER POND~Open floor plan, lots of water views, 2 decks make this the perfect 4-season home. 300' +/- of sunny waterfront. **\$435,000**



GREAT POND~Cozy, vintage Maine cottage with 152' +/- of waterfront, 4 bedrooms with a balcony off 2 of them and screened in deck. **\$285,000**



POCASSET LAKE~Custom built 4 BR Colonial in picturesque subdivision with 266' +/- shorefront. 19 miles to new hospital in Augusta. **\$795,000**



Mt. Phillip: A Rome Trail Tradition



For generations, a favorite family hike has been Mt. Phillip (Philip) in Rome. Old post cards and photographs show open fields leading up to the summit and spacious views in every direction. For years the trailhead was barely discernable off the side of Route 225 but those who knew about the climb could always find it.

Today’s trail is a wooded, well-marked 1.4-mile loop with a few rocky inclines to scale, and the

view is mainly from the top. Acquired in 2004 by the Belgrade Regional Conservation Alliance and Pine Island Camp, the 207 acres that comprise the hiking trail and summit have an excellent parking area and a well-marked trailhead.


Tall pines, mixed hardwoods and evergreen, and mature hemlocks line various sections of the trail which is marked with blue blazes. At the top partial clearings provide views of lakes, woodlands and dis-

tant mountains. This is a good short hike for vacationers (including children and dogs) who want to have a scenic morning outing and time to relax near a lake in the afternoon. From Belgrade Lakes take Route 27 north and turn east on Route 225. For more information call 495-6039.



Summer Solstice Party
Set For June 15

THEATER AT MONMOUTH
SEASON 44 | JUNE 22-SEPTEMBER 29



THE KNIGHT OF THE BURNING PESTLE
by Francis Beaumont

TAMING OF THE SHREW
by William Shakespeare

OUR TOWN
by Thornton Wilder

THE YEAR OF MAGICAL THINKING
by Joan Didion

THE VELVETEEN RABBIT
Margery Williams' classic
adapted by Dawn McAndrews

PATIENCE
by Gilbert & Sullivan

THEATER AT MONMOUTH
MONMOUTH, ME
207.933.9999
THEATERATMONMOUTH.ORG

When you leave your vacation home, please leave your unopened, unexpired foodstuffs for the Food Pantry!

Drop Off Locations:

- Belgrade Post Office • Belgrade Lakes Post Office • Belgrade Community Center for All Seasons • Belgrade Town Office



The 16th annual Garden Party “Summer Solstice in the Garden” to benefit Hospice Volunteers of Waterville Area will be held on Saturday, June 15, from 10 am to 2 pm at Fieldstone Gardens, Quaker Lane in Vassalboro. (Rain date June 16th.)

The event includes gardening workshops, music, local artisans, garden tours, children’s activities and the opportunity to relax in the beautiful gardens and enjoy a buffet gourmet luncheon. Admission fee is \$5 for all ages; the buffet is extra.

Sponsored by Hospice Volunteers of the Waterville Area, the Summer Solstice in the Garden benefits programs such as volunteer training, bereavement services, Hope’s Place for grieving children, teens, and families and Camp Ray of Hope, a weekend retreat held annually for those who have lost someone they love.

Hospice Volunteers of the Waterville Area provides end-of-life care and grief support to residents in 27 communities in Kennebec, Waldo, Penobscot and Somerset Counties.

Pre-register for admission and the gourmet luncheon at 873-3615.



JUNE NEWS
Maine Lakes Resource Center



Making Conservation a Tradition

Beginning on the 16th and continuing through Sept. 15 : 8 AM to 1PM Weekly Belgrade Market begins for the season at MLRC - Fresh food, great baked goods, and a chance to gather with neighbors. 18th BRCA sponsored lecture at 7PM ... check their website. 20th 3 PM New England Music Camp Concert – College Program - these are the pre-professionals who will have careers in symphonies across the nationcome, relax and enjoy ice tea and cookies.

www.mainelakesresourcecenter.org





Expressions

Blistered Fingers Bluegrass: Family-Friendly and Kid-Fun



ACME LAND SURVEYING, LLC
Professional Land Surveyors – Professional Foresters
Property Surveys, Subdivisions, Topographic Surveys, MLIs,
Elevation Certificates/LOMAs, ALTA/ACS Surveys,
Deed Research, Wetland Delineation, Forest Management
108 Fairbanks Rd., Suite 5 Tel. (207) 778-4081
Farmington, ME 04938 Toll Free (800) 778-4081
Website: www.acmelandsurveying.com Email: info@acmelandsurveying.com

**Boat – Automobile – RV
Enclosed Storage**
Winter Storage for Summer Vehicles
Reasonable Rates! Boats stored on your trailer!
Real Protection from Winter Storms and Sun Damage
Pontoon Boats and Large RV's – No Problem!
www.belgradelakesmarine.com




New customers reserve now – limited openings available.

**Belgrade Lakes
Marine & Storage, Inc.**
366 Augusta Road (Route 27) Belgrade **207-495-2378**

David J. Auclair
www.auclaircycle.com
**AUCLAIR
CYCLE & SKI**
64-66 BANGOR ST. AUGUSTA, ME 04330
623-4351 / 800-734-7171 • Fast Professional Service
Bicycles • Skateboards • Roof Racks • Rentals

PIERCE'S GREENHOUSES

SUMMER HOURS:
Tuesday thru Saturday
9AM-5PM
Sunday & Monday
9AM-1PM



Annuals
Perennials
Vegetable Seedlings
Herb Seedlings
Soil and Compost
Containers made to order
Hanging Baskets

407 BELGRADE ROAD
OAKLAND, MAINE 04963
207-465-7788
pierce231@gmail.com

True love needs a true jeweler.

L. TARDIF JEWELER
62 Main Street Waterville, Me.
est. 1935

Tues - Sat 9 - 5

The 40th Blistered Fingers Family Bluegrass Music Festival at the Litchfield Fairgrounds starting Thursday, June 20 will offer the same great line up of bands, large tented area, food and music-oriented concessions and spacious camping area with super clean restroom facilities and it will have an increasing number of children among the many fans, friends and families who visit for a session or camp out for the week.

Part of the kids draw is the Kids Academy for ages 5-18 that immerses young musicians in a rewarding practice and play experience. The other part of the draw is that adults are starting to recognize that children like the danceable beat and catchy lyrics of bluegrass.

Run by the Cormier family of Sidney, the Blistered Fingers Family Bluegrass Festival is known for its professionalism, its energy, and its attention to safety and security It's a homecoming

for music lovers and listeners from all over the east coast. And it combines both formal stage presentations and informal field picking.

Although the festival begins on Thursday, gates open on the preceding Monday at 8 am for Early Birds, and even earlier arrivals may use the area across from the main gate to wait for Monday morning.

A really unique aspect of Blistered Fingers Festivals is the Open Stage (acoustic only) on Sunday afternoon for five bands, one of which will get hired for the following festival season. Bands are encouraged to apply early.

For more information visit www.blisteredfingers.com or call 873-6539

Weekend ticket and camping rates are available. Day prices payable at the gate are Thursday: \$15, 5-9:30 pm, Friday and Saturday \$30 or after 5 pm \$20, Sunday \$10.

40th Blistered Fingers Family Bluegrass Music Festival
June 20, 21, 22 & 23, 2013
Litchfield Fairgrounds – Litchfield, Maine

The Gibson Brothers (NY).....	Sat
Little Roy & Lizzy (GA).....	Sat
Sierra Hull & Highway111 (TN).....	Fri
The James King Band VA).....	Thurs, Fri
White Mountain Bluegrass (N.....	Sat, Sun
Bluegrass Diamonds (NB).....	Fri, Sat
The Corey Zink Band (MA).....	Fri, Sat
Wilf Clark & Misty Mountaineers.....	Thu, Fri, Sat
Michelle Canning & Rough Edges (MA).....	Thu, Sun
CPS Express (ME).....	Thu, Sun
Robinson's Bluegrass Gospel Sing & Jam.....	Sun
Blistered Fingers (ME).....	Sat

THE FRAMEMAKERS
For Extraordinary Custom Framing
Andrew Wyeth Reproductions
Conservation-framed and ready to hang
\$49.95!
46 Main Street • Downtown Waterville
207-872-8927 • www.theframemakers.com

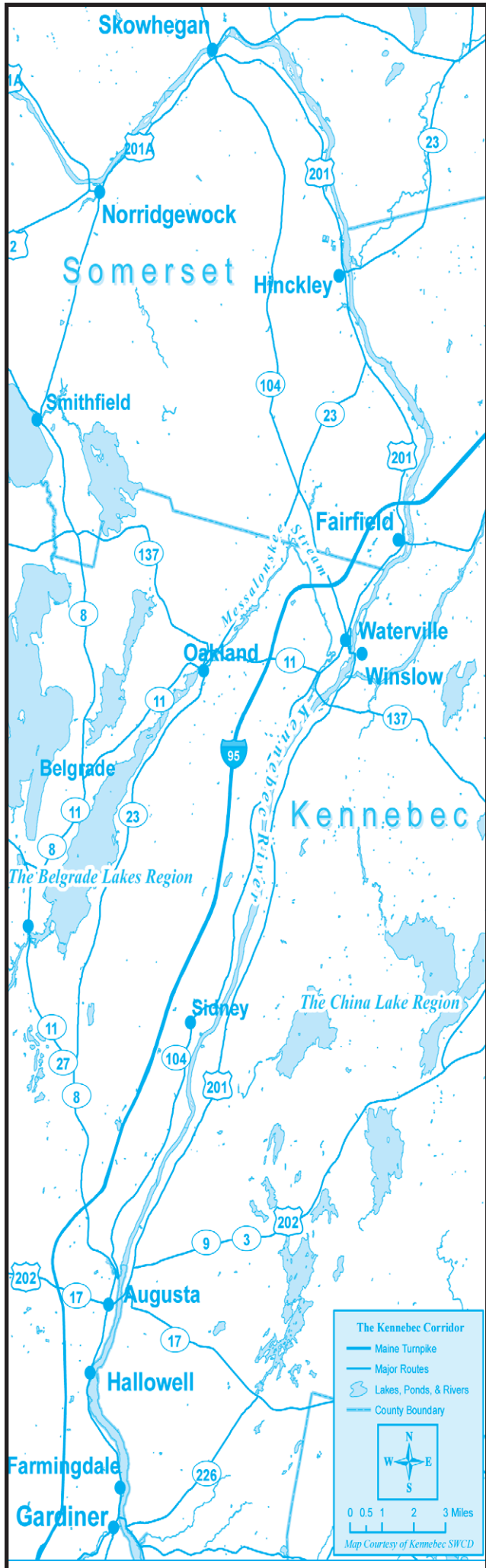
Quality custom framing is not as expensive as you may think.
Come in for a free estimate!
Our award-winning staff will help you find the right combination for any budget.
Quality Custom Framing with an Emphasis on Excellent Customer Service & Quick Turnaround!

CHILDREN'S BOOK CELLAR

BOOKS, PUZZLES, TOYS, GAMES
A store for children of all ages, the young and the young at heart.
Open Monday 12 to 5 • Tues. – Sat. 9 to 5
52 Main St. Waterville 872-4543

DAVID STEVENS
Excavation & Septic Systems
LOAM GRAVEL SAND
465-3815
Cell: 314-0314
P.O. Box 146 • Belgrade, Maine 04917
DEP Certified Erosion and Sedimentation Control Practices





Contact Summertime with ads and event information.
207-495-3777 • ebelnews@earthlink.net
www.sumbelnews.com

—Katy's Column—

What's A Quarter Worth?

Few of us have the deep pockets of writer Stephen King or the late philanthropist Harold Alfond but most of us could find a few dimes or a quarter or two. That's all it would take to meet a challenge to raise money for a local library, a way to feed people or when any amount of dollars are needed for something that local people see a need for. Would quarters do it?

Yes, we're talking about quarters. Would you believe that if you laid a mile of quarters along any road from your town to the next, then gathered up all that loot and counted it you would have something like \$15,000 a mile! Truly. There are, as you probably know, 5,280 feet in a mile. Lay 12 quarters along the edge of a ruler and – there you have it – it's a foot. The 12 quarters equal \$3.00 – so go do the arithmetic and darned if it doesn't count up to be precisely \$15,840.

Before we go any further let me honestly confess that I NEVER passed a math test in my life so I may have fouled up with my reckoning! In truth I am hoping to impress you with one thought. Read on.

Not for a minute would I suggest that you pop in a half mile of quarters for any fundraising but the idea merits a thought, don't you think? As people walk across the site where the money is needed it seems quite reasonable they might pop a hand into their pockets and locate a quarter – and give it. That amount, even in the chaotic Wall Street news each day would not leave anyone penniless.

Few of us are able to write a check in the amount that would overwhelmingly benefit any group that solicits help. What we can give – and DO give is what is important. Each of us knows our own ability to contribute. This piece is simply a thought that might resonate with you. No matter how much you give at any time it helps if that gift, over the weeks and month, can be duplicated now and then. Little by little it all adds up. Now this addition I know is right!

I trust I have convinced, with diligently describing the action, people who might not be able to contribute a large gift to any charitable cause may feel generously able to toss in a quarter or two or more, prove that a "Mile of Quarters" might be a reasonable and perhaps a fun way to begin your current fund-raising project. I just bet that idea is worth – let's say – a nickel!

Katy Perry is an author, news commentator, all around interesting lady, enthusiast about most things Maine and a very vibrant nonagenarian who writes a weekly column for Summertime in the Belgrades and who makes the weekly rounds delivering Summertime in her hometown Hallowell. And she welcomes your call about story ideas!

Liz Fontaine

CMG inc

Print, Mail & More!

207 592 5990 liz@colorstorminc.com

- Printing
- Envelopes
- Post Cards
- Newsletters
- Brochures
- Invitations

BELGRADE REGIONAL HEALTH CENTER

Providing quality care to the greater Belgrade area since 1977.

New Patients Welcome
Call us today!

4 Clement Way, Belgrade
Just 2 miles south of Belgrade
Lakes center on Rt. 27!
BelgradeCHC.org
(207) 495-3323

Amy Madden, MD

Just here for the summer, or new to the area?
Looking for a vet?
Maybe we can help

Lakeside
VETERINARY CLINIC

www.lakevets.com
Hours 7:30 to 5:00
Monday thru Friday
8:00 to 12:00 Saturday

Dr. Eleanor C. Sabeau

88 Libby Hill Rd • Oakland, Maine 04963
(207) 465-PETS (7387) (207) 465-VETS (8387)

Call or visit us
at the head of
Snow Pond in
Oakland (Rt. 23)!

LakeHouse™ Renovations

Design • Build

Traditional Style Camps,
Cottages and Lakefront Homes
207.242.3663
www.lakehousedesignbuild.com

Barbara's Antiques & Collectibles Group Shoppe
Multi Dealer Shop Unique Variety of Antiques and Collectibles
3 Miles North of Skowhegan on Route 201
414 Lakewood Rd., Madison
Open Mon to Sat 10-5 Sun 12-4
474-2550

VISA MasterCard

Mosquito Season Is Here! Take Back Your Property

MAINE MOSQUITO & PEST SERVICES

- Offering effective 100% all natural solutions
- Also offering tick control solutions to protect your family from lyme disease carrying ticks
- Enjoy the Evening sitting on your deck.

Office in Portland, Maine
207-797-0498
Office in Augusta, Maine
207-622-6600
www.mainepestservices.com





Lynch

LANDSCAPING INC.
FOR THOSE WHO DESIRE QUALITY

207-474-2420

Design - Install - Maintain

Designing landscapes to beautify your property and protect your natural resource - *Installing* landscapes in a manner that promotes sustainability and prevents erosion - *Maintaining* landscapes so your investment lasts a lifetime



Licensed, Certified & Accredited
For All Your Landscaping Needs

www.lynchlandscaping.com



Belgrade Vacation Rentals

CAMP & COTTAGE RENTALS
We've moved to Belgrade Lakes!

Contact Us Today! **(207) 495-4011**
www.BelgradeVacationRentals.com

Own A Property? We Will Rent it for You!



RAILROAD SQUARE CINEMA

Showing the Best of World and American Cinema

17 Railroad Square, Waterville, Maine, 04901
24-hour movie info:
207-873-6526
www.railroadsquarecinema.com



Home of the
Maine International
Film Festival
(July 12 - 21, 2013)
www.MIFF.org

Presented by Modern Art Foundry



SPRING GALLERY

Online Exhibition: 

Gift shop bronze available locally at:
Maine Lakes Resource Center, Belgrade, ME
Sugarwood Gallery, Farmington, ME
www.springgallerymaine.com



ST. MICHAEL SCHOOL

56 Sewall Street • Augusta • (207) 623-3491 • smsmaine.org


Currently Accepting Enrollments for Pre-K Through Grade 8

St. Michael School is a robust Catholic school offering a quality, faith-filled education to grades Pre-K through grade 8. Our students' lives are molded and transformed through strong academics, excellent sports and activities programs, and a commitment to community service. We welcome both Catholic and non-Catholic students.

Where Futures Begin!



WE OFFER:

- Maine State Certified Faculty and Staff
- Music, Chorus, Art and Physical Education
- Title I Reading and Speech Services
- Full Day Kindergarten and Full Day Pre-K
- Excellent Lunch and Extended Day Programs
- Study of French for Grades PK - 8
- Intramural Sports and Healthy Activities
- Strong Athletics Program
- Science Fair and Environmental Projects
- Children's Stage Adventure
- Adventure Club for Grades 6 - 8
- Community Service Projects
- Civic Oration, Math Team, DAR Essay Contest, Spelling and Geography Bee




MAINE EYE CARE ASSOCIATES

"Serving Maine Since 1922"



James R. Putnam, M.D. Steve R. Witkin, M.D. André J. Witkin, M.D.

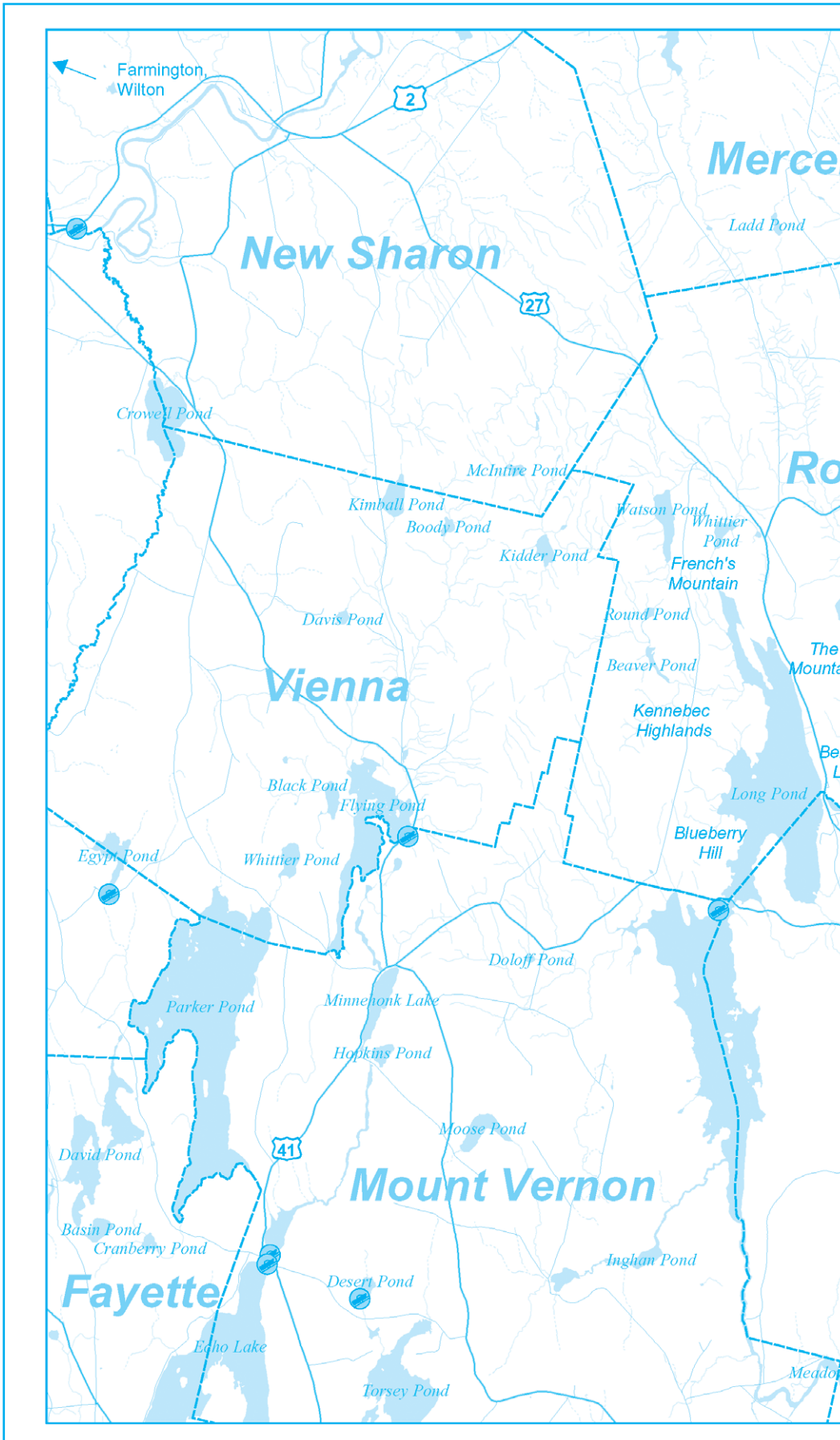


Helen Bell-Neceveski, O.D. Lorie Lepley Parks, O.D.

325A Kennedy Memorial Drive
Waterville, Maine 04901
873-2731
(800) 660-3403
www.MaineEyeCare.com

- Comprehensive Eye Exams
- Eyewear Center
- State of the art Cataract Surgery
- Glaucoma
- Retinal Diseases
- Laser Surgery
- Oculoplastic Diseases

• Ambulatory Surgery Center



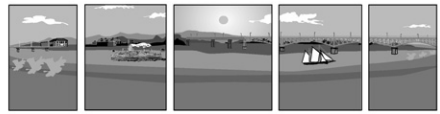
RIVERSIDE FARM

RESTAURANT & WINE MARKET

Restaurant Hours:
Brunch
Sundays - 10am-2pm
Lunch
Tuesdays - Saturdays - 11am-3pm
Dinner
Thursdays -- Saturday - 5:30pm-8:30pm

Wine Market Hours:
Tuesdays - Fridays - 10am-6pm
Saturday - 10am-4pm
291 Fairfield Street
Oakland, ME 04963
For reservations call 207-465-4439

RiversideFarmMarket.com



RIVERFRONT BARBEQUE & GRILLE

WORLD CLASS BARBEQUE

SEAFOOD, PASTA, & VEGETARIAN ENTREES

207.622.8899

300 WATER STREET, AUGUSTA, MAINE

WWW.RIVERFRONTBBQ.COM

FULL SERVICE DINING * CATERING * BULK TAKE OUT



The Gin Mill
Augusta, Maine

Augusta's finest upscale lounge featuring fine wine, martinis, and over 100 brands of beer from Germany to Japan

Thursday thru Saturday 3:00pm until Midnight,
Above the Riverfront Barbeque & Grille
at 300 Water Street
207.620.9200

Lakepoint REAL ESTATE

"Put The Team to Work For You"

207.495.3700

GAIL RIZZO 207-242-8119
gail@gailrizzo.com



PAT DONAHUE 207-730-2331
pdcamp@msn.com



ROME: Custom Bit Brook Wood 3BR, master w/tub and walk-in shower. LR w/gas FP, lge kit w/island plus built-in

bar area, 3 car gar, short distance to town beach on Great Pond. **MLS# 1090895 \$269,999**



GREAT POND SHARED, ROME: Crystal Spring Camps, 2BR + loft, 2BA, screened-in porch, wood stove sitting on the water

w/2,100' +/- shared waterfront on 20 +/- ac community. **MLS# 1071959 \$395,000.**



GREAT POND, ROME: Vintage Cottage completely renovated right on the shore w/amazing lake views. 3BR, LR, Den,

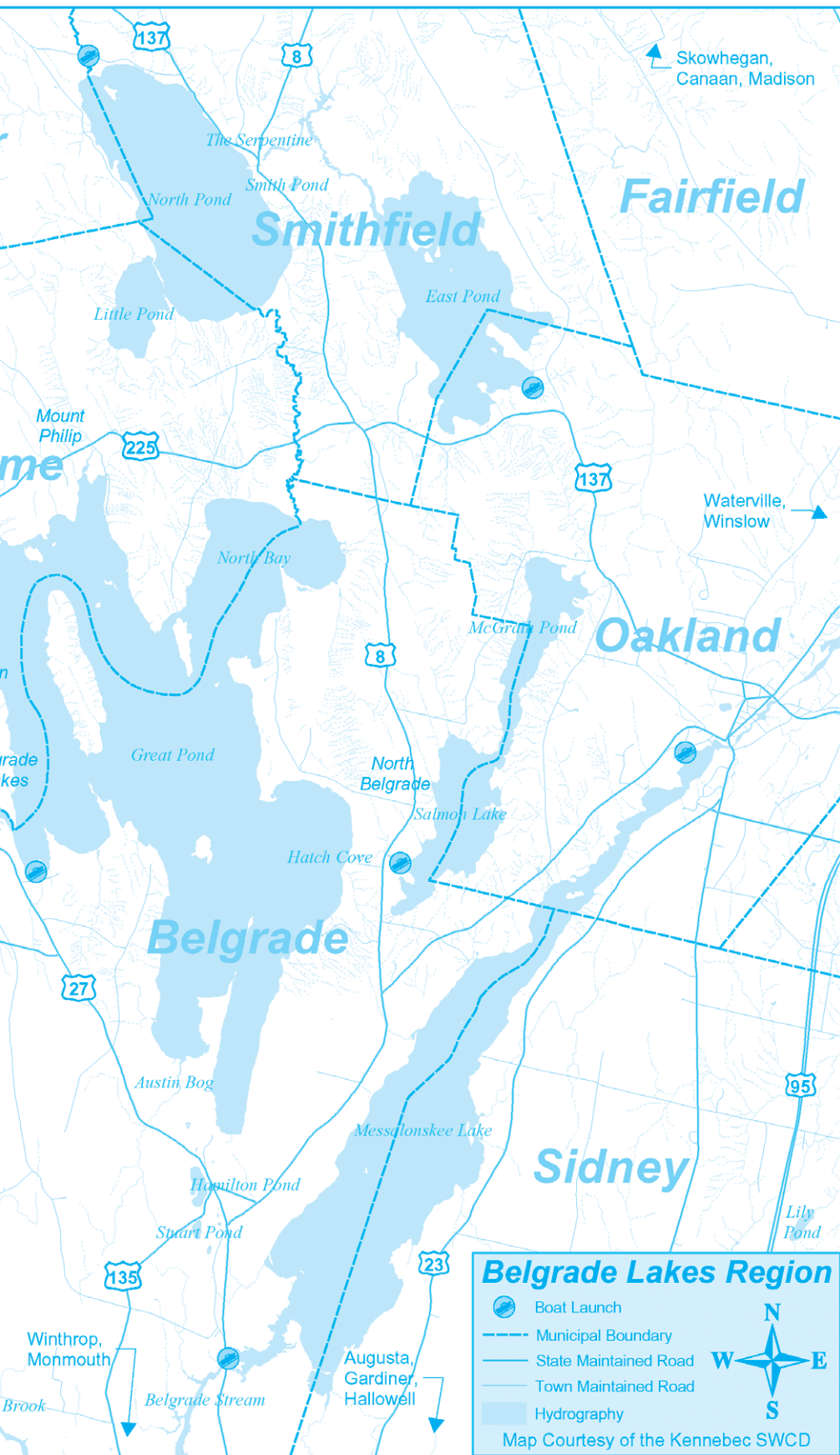
Dining Area and covered porch w/deck facing the lake. **MLS# 1093005 \$379,000**



PARKER POND, CHESTERVILLE: 3BR yr-rmd with 150' +/- lakefront on 2.9 +/- acres. Plenty of lakeside outdoor space.

Kit, dining, living room, attached 2 car gar w/storage above. **MLS# 1093662 \$365,000**

221 Main Street, Belgrade Lakes, Maine 04918



21 Bay Street
Winslow

LOBSTER TRAP and STEAKHOUSE

872-0529

Savor the taste of
Maine while relaxing
on our deck overlooking
the Kennebec River!



Here's A Sampling From Our Menu
Our "Famous" Lobster Stew
Jumbo Lobsters • Locally Hand-Cut Steaks • Fresh Crabmeat Rolls
Shrimp Cocktail • Lobster Roll • Fried Clams • Fresh Scallops & Steamed Clams • Chef's Specialties Featured Daily
Surf & Turf Specials • Maine Crafted Ales

11 AM - 9 PM
OFF RT 95 TAKE
WATERVILLE/OAKLAND
EXIT 127 FOLLOW
RT 137 BUSINESS TO
WINSLOW
TAKE RIGHT
AFTER THE BRIDGE
WE'RE ON THE RIGHT

What's your reason to call All Season?

**Standing Seam
Metal Roofing
Garages
Home Additions
Sun Rooms**



HOME IMPROVEMENT CO.
Call 1-800-464-3039

**Kitchen & Bath
Remodeling
Garages
Siding and
Windows**

www.all-season.com

ShoreStation

The original since 1959

Why Shore Station?
Docks & Boat Lifts
Dependable, Rugged,

Docks = Stability
A-frame stance handles
a 6,000lb boat

Accessories Galore

Easy installation



Brown Dock Services www.browndockservices.com

George: 495.2600 Jason: 316.7514

Display Docks & Lifts at Great Pond Marina

Village Storage Building Main St. Belgrade Lakes



Day's Store

182 Main Street PO Box 277 Belgrade Lakes, ME 04918 207-495-2205

**FRESH MEATS • LOBSTERS • BAKERY •
PIZZAS • SANDWICHES • ATM • AGENCY LIQUOR**

**LAKESIDE
SCOOPS**

Featuring



CONES SUNDAES

On Long Pond behind Day's Store

Clark Marine

Call or stop by the
Manchester facility
to see the full selection!

**Great Selection
Of Used Boats
Available!**

207-622-7011

ClarkMarineMaine.com



**57 Puddledock Road
Manchester, ME**





— Notebook —

Augusta

• The Augusta area is invited to a reception and free Sunday afternoon concert In The Bowl at New England Music Camp, Route 23 in Sidney on Sunday, July 14 at 2 pm, concert at 3 pm. The public will have a chance to hear about the major expansion of the NEMC which includes a state-of-the-art 750 seat concert hall, a Community Music School, conference facility and Arts Academy. Bring lawn chairs or blankets. 465-3025

• The City of Augusta's Bicentennial Nature Park on Route 3 for Augusta residents and guests will open for the season Saturday, June 15th. Hours of operation are 11 am-7 pm, seven days a week. There will be a nominal charge to Augusta families and individuals. Season pass and daily admission information is available at the Park office or at Buker Community Center. Residents must show proof of residence. The park has available swimming, picnicking, hiking, fishing, beautiful scenery and wildlife. For more information contact the Recreation Bureau at Buker Community Center at 626-2350 or the Parks Bureau at 626-2352, or call the park at 620-7010.

Belgrade/Rome

• This year the Belgrade/Rome Food Pantry will join other organizations and businesses in the 4th of July festivities in the town of Belgrade. Food pantry volunteers will be stationed on Main Street in the village from 11 am until 3 pm with information concerning the pantry. There will also be a donation box for food

items and/or monetary contributions.

The Belgrade/Rome Special Needs Food Pantry, located on Route 27 at the Belgrade Town Office, has been providing a valuable service to eligible residents for 20 years. With a dedicated volunteer force of more than 40 individuals who collect, purchase, organize and distribute contributions this valuable service would not be possible. Anyone interested in becoming involved in this worthwhile organization, please call Marylou Butterfield at 495-2022

Farmington

• Save the Octagon House! The Farmington Historical Society is raising funds to purchase the 155-year old house, one of only 19 of its kind in Maine. Known for its 8-sided glass cupola, this downtown landmark was in the Mallett Family for several generations, beginning with Wilbert G. Mallett who was principal of Farmington Normal School, now University of Maine at Farmington. Donations may be sent to Farmington Historical Society, P.O. Box 575, Farmington, ME 04938. 778-4275

Hallowell

• The Harlow Gallery has launched a new website to mark the 50th anniversary of its founding in downtown Hallowell, Maine. The new website, harlow-gallery.org features a timeline highlighting some of the exhibitions, artists, staff and volunteers who have been involved over the past five decades. 622-3813

Hinkley

• Vendor spots available for Christmas Craft Fair. The first annual Holiday Winter Craft Fair to benefit the

programs at Good Will-Hinckley will be held on Saturday, December 14 from 9 am-3 pm during the popular Annual Festival of Trees. The fair will be free to the public, will feature only Maine made handcrafted items and will be advertised throughout the community. Exhibitor booths will be 8' by 4'; exhibitors must bring their own chairs and table cloths and tables must be covered in the front and on the sides. No tacks or holes will be permitted in the walls. Fees are \$25 for a single table, \$40 for a double, and \$5 extra for electricity. Register at getinvolved@gwh.org

Oakland

• The Oakland Public Library's new summer fee for non-residents is \$10.00 from Memorial Day to Columbus Day. Hours are Tuesday 10 am-7 pm and Wednesday through Friday 10 am-6 pm. Children's Story Time is Fridays at 10:30 am year round. The library is at 18 Church Street. 465-7533

Smithfield

• The Smithfield Maine Historical Society was formed on November 1, 2009 and is located at the Groves House, 21 Lakeview Drive. The 2013 Open House Schedule is 11 am-1 pm on June 15, 22, 29; July 13, 20, 27; August 10, 17, 24; September 2, 14, 21. The Historical Society also invites everyone to join the monthly meetings at 9:30 am on June 15, July 20, August 17, September 21 and October 19. 362-5340 or 634-4392.

Waterville

• Join the Maine International Film Festival, July 12-21, in a variety of ways: sponsor a film, advertise in the festival program guide, order a festival pass, volunteer – or do it all. Visit www.miff.org or call 861-8138.

Continued on page 18

LOCAL PEOPLE LOCAL DECISIONS LOCAL IMPACT



People around Central Maine take pride in things that are "their own."

At Kennebec Savings Bank, we feel the same because we live, work and play here, too.

If you want to know your local banker, to have decisions made by people you can trust, we invite you to join the many in Central Maine who are proud to say "That's my Bank!"

Kennebec Savings Bank

Augusta 622-5801 Waterville 872-5563 Winthrop 377-5801 Gardiner 588-5801

www.kennebecsavings.com



Call 495-3777
to advertise in
Summertime in the Belgrades

FOR SALE



1907 22' Palmer fantail launch with 1907 Palmer Model C Make & Break engine.
Fully restored. \$27,500.

Dave Ault 207 685 4578 drault58@myfairpoint.net



MICHAEL BREAU

Creative solutions for all your Mac needs

Macintosh and iOS support, based in Western Maine, working onsite throughout Maine



If you have Macs, iOS devices, software or network problems, websites you'd like built, or any ideas you would like to implement using Macintosh computers, give me a call and we can discuss if I can help...

207-578-0226 • www.michaelbreault.net



Cobbossee Corner

Calling all Runners...to Join the 'Friends on the Fourth' 5K!



Start this year's 4th of July with a bang by entering the 11th annual "Friends on the 4th" 5K Run/Jog/Walk. The race is scheduled for Thursday July 4, 2013 at 8:00 a.m. held in Winthrop, Maine at Norcross Point. The race, with a scenic course that runs along the eastern shore of Maranacook Lake, is open to all runners, joggers, and walkers of all ages. Last years race was a huge success with 670 entries from locals and racers from all across the country, making the "Friends on the 4th" 5K race "Central Maine's Biggest Road Race."

The pre-registration fee is \$20 and guarantees all participants a free t-shirt and stuffed gift bag. Payment and registration form must be received by 12:00 noon, Monday, July 1 in order to guarantee the t-shirt and gift bag. Event day registration is \$25 with no guarantee of t-shirt and gift bag. Registration begins at 7:00 a.m. at the American Legion on Bowdoin Street in Winthrop.

This annual fun event has become a tradition with many local and summer visiting families and is culminated by a free raffle of wonderful prizes for all participants and an awards ceremony for winners of each age group and overall winners. This year's race is made possible by generous support of local business sponsors – Major sponsor: Homestead Realty; Gold level sponsors: On Target Utility Services, G&E Roofing, and The China Dine-Ah; Silver level sponsors: MacPage LLC, Mattson's Flooring & Lighting Center, Kennebec Savings Bank and



Paul Blouin Performance; and Bronze level sponsors: Lipman & Katz, The Copy Center, and American Awards. All proceeds from registrations support programs offered by the Friends of the Cobbossee Watershed, a 7,000+ member organization whose mission is to engage individuals, businesses and communities to "protect and improve the 28 lakes and streams of the Cobbossee Watershed."

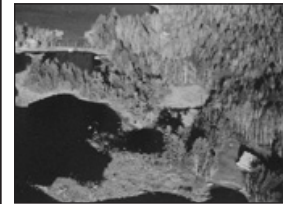
FMI or to download a registration form or register online, visit www.watershedfriends.com or call the Friends office at 621-4100.

COLDWELL BANKER
Thomas Agency

377-2121
75 Main Street,
Winthrop ME 04364



Sabbattus Pond - Your Own Waterfront Paradise! Year-round Chalet 2 bed, 1 bath, Pine, field stone fireplace. Views & owned waterfront with deep water dock, beautiful sunsets. Plus guest-house with kitchen & bath. ENJOY & SIT ON YOUR HUGE DECK-LIFE IS GOOD! Rent to own. **\$199,735**



Cobbossee Lake - 3 +/- Acres, all soils tested with surveyed building lot. Beautiful sandy beach area, year round road access, electrical power at lot. All set and ready to build on. **\$149,000**

www.coldwellbankerthomas.com info@coldwellbankerthomas.com

Quality Used Books

THE
Peoples
BOOK
SHOP
USED BOOKS

8,000 Gently Used,
Hand Picked, Eclectic
and Popular Books

605 Wings Mill Road
Mount Vernon - 620-2392

hosehead51@roadrunner.com

Open 12 - 5:30 every day
except Mon. & Tues.

The Artisan's Barn



163 North Road
Readfield, Maine 04355
207-685-9787
www.theartisansbarn.com

Thurs/Fri 11 to 5 PM
Sat 10 AM to 4 PM
Open May-December

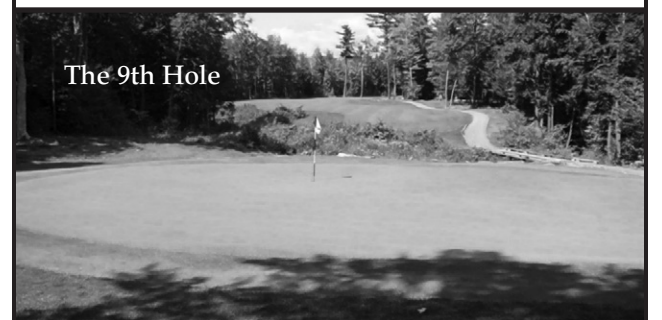
THIRTY-SIX GREAT REASONS

MAINE'S ONLY 36-HOLE
PUBLIC GOLF COURSE
THE LARGEST GOLF FACILITY
NORTH OF BOSTON

Championship Golf, Full Pro Shop,
Driving Range, & Modern Clubhouse.
Groups Welcome

Natanis
GOLF COURSE

Webber Pond Road,
Vassalboro, ME • 207-622-3561



The 9th Hole

Open
Tues.-Sun.
9 to 5

PERENNIALS



Maine's Leading Perennial Plant Nursery



- Over 1000 varieties of perennials
- Choice of selection for sun, shade, rock gardens and ground covers
- Northern grown, top quality plants
- Our greenhouses are well stocked with annuals, herbs, and hanging baskets

Visit our online catalog at www.FieldstoneGardens.com

Fieldstone Gardens, Inc.

55 Quaker Lane, Vassalboro, ME 04989 Ph/Fx: 207-923-38336
15 minutes from Waterville to Augusta Follow D.O.T. signs from U.S. Rte. 201, 32, or 3

CSS Cayer
Security Services, Inc.

COMMERCIAL & RESIDENTIAL

Burglary & Fire Alarm Systems
Video Surveillance & CCTV
Access Control

24 Hour UL Listed Monitoring Service

453-9177

www.cayersecurity.com

PEPPERS Garden & Grill
357A Main Street, Winthrop
377-8877

Tuesday	Wednesday	Thursday	Fri. & Sat.
Two-fer Menu	Pizza Night	Surf & Turf Night	Prime Rib & Specials

Hours: Tues.-Thurs. 11:30-8:30, Fri. & Sat. 11:30-9
Banquet facility for up to 30



—The Luckiest Boy—

Chapter II –The Outboard Motor

by Rod Johnson

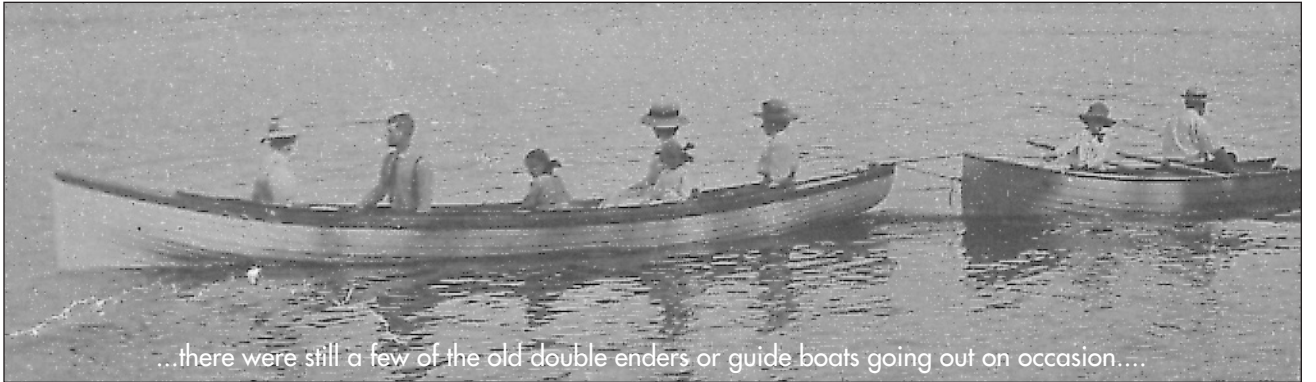
As it turned out, the small outboard tucked away in the boathouse closet was a 4.5 horsepower Champion. It was kind of a silvery color, with a little blue paint left here and there. After years of non-use, old grease and motor oil had collected dirt and dust as well as plenty of spider dung.

Even the smell of the old oil and dirt coupled with smells of the musty boathouse closet made my excitement level move up a notch or two. The dream of having my own outboard was much closer to being a reality than it had ever been before. Thank You Old Bill.

The boat I had imagined it powering was about a 10-foot wooden flat bottom scow that Mr. and Mrs. Koref had given my father. Dad was their camp caretaker and they were also close friends. At that time the Korefs owned what is now the Gawler camp. Their youngest boy, Emile, had apparently outgrown the boat. It was likely that Mr. K had told Dad to get rid of the boat, either at the dump or in a burn pile. That was the usual demise of old wooden crafts that were no longer needed, or too rotted to float. Instead, Dad had dragged it home the summer before and said I could have it to paddle around down behind the house. Our house was 3 houses South of Old Bill's on the same side of the street. It's the white square one with a tin roof, across from the lime-colored house. I had paddled or pushed the scow around as best possible along a hundred feet of shoreline, Mother's assigned boundaries. Other boats were going in and out of the stream powered by outboards, and there were still a few of the old double enders or guide boats going out on occasion. The guide boats had older type gasoline inboard engines and some even had hand cranks to start them.

At that time, wooden boats were frowned upon and were a dying breed. Aluminum and fiberglass hulls were starting to take the place of wood, although a short romance with molded plywood hulls came along then, too. My Dad bought several plywood hulls from Canada and fitted them with decks, rails and transoms during the winters. The sports liked them and he rented them to seasonal renters that stayed at the Locust House. Unfortunately, the keels and stems were made from birch wood that rotted quickly. Those plywoods were gone in 15 years, but other brands and material techniques still survive today.

Back to the motor. The looks of the motor as previously described, belied the way it ran. I forget the



...there were still a few of the old double enders or guide boats going out on occasion....

details of how or who helped me, but the motor became a running reality and it fit nicely on the Koref's old scow. It ran great for at least a couple of summers and probably drove the stream neighbors half crazy, as I only stopped it to refuel or to go fishing. Mother's previous boundaries had been stretched to the whole inner stream, from the narrows way down to the bridge. Of course, no boundary is a perfect science and Mother's generous latitudes got cheated on. Whenever she went into town (Waterville) to get groceries, do banking or whatever, my cousin Cary and I would sneak up through the narrows and into Pentlarge Cove. We knew turtles lived there and sunned themselves on the big rocks. Dumont Townsend who lived with Ines Bean, L.L.'s sister-in-law I think, would give us 25 cents each for every big snapper we could deliver. Talk about capitalism starting early, we were 9 then.

Dumont lived just up the stream, second place in on the left as you enter from the lake, right across from L.L. Bean's old place. John and Julie Dupont live in L.L.s now. Dumont drilled holes in the perimeter of the shell and kept them at his dock on a 20 foot wire leader – until he was ready to make turtle soup.

I don't really remember what became of the old Champion, I think perhaps Dad made me take it back and put it in the boathouse. The motor was now seen as "too small" and we needed something faster. My brother Dick joined the Army in 1956 along with other boys in town. I think perhaps Donald Hanson, Puggy Damren, Tom Sawyer, Stacy Yeaton, Mel Pray and a few others reported to Fort Dix that year. The point is, they left their toys behind and we younger boys scoffed them up. My brother and Frank Megill had both bought new Chris Craft 10 horsepower outboards in 1955 or 1956. Most people today don't know that Chris Craft made outboards, and why should they, unless they were an old motor head.

My brother's 10 horsepower Chris Craft became

my second engine. Dad gave me a 10-foot plywood hull that didn't rent well due to it's size and the Chris was coupled to it. The unit was a hot item on Great Pond during the summers of '57, '58 and '59. The only thing slightly faster was Dudley Cunningham's canvas covered runabout with a new Johnson 35 horsepower. Dudley is part of the Dowse family that owned the South end of Hoyt's Island prior to the current owners, Bill and Joan Witkin. The newly formed Belgrade Chamber of Commerce (after the hotel burned in 1956) had sponsored a boat race in 1959 and Dud beat me by a boat length. I think Dad and Mom realized they had a maniac on their hands at that point, but Mother held her breath and Dad had a Narry Gansett.

At the age of 11 or 12, my newer summer friend Ralph Pope and I flipped the boat at full speed out in front of his folks camp (Loon Lodge), deep in the cove by the marina. Ralph got whacked on the head by the gunnels when she came over. His brother Larry and Grandpa came out and rescued us as they had been on the dock reading the paper while we were out there raising hell. Ralph's head was bleeding like a stuck pig, but it turned out it was only superficial. Boys will be boys.

Ralph's Dad only came up from Boston on weekends, and I think he realized that he needed to step in soon as we boys were having way too much fun, and the gasoline charge at Day's Marina was considerable. In those days, most lake dwellers just drove in to the marina, filled up with gas and signed a little slip of paper. More to come on that.

The exact demise of the Chris Craft 10 is a "cloudy memory", but I think that racing and too many dunkings in Great Pond put an end to it. When brother Dick returned from the Army in late 1959 there wasn't much left of that fast motor. I see those motors now in collections and know that once upon a time they went like the wind.

THE END



NATIVE NOTIONS
ECOLOGICAL LANDSCAPES
NATIVENOTIONSLANDSCAPES.COM
(207) 314-9538

Lakesmart Certified Contractor

- Patios, Walkways, Retaining Walls
- Permeable Pavers • Raingardens
- Buffer Plantings • Wildflower Fields

Join us...and help protect our lakes!

Belgrade Lakes Association
137 Main Street, Belgrade Lakes, Maine 04918
207-512-5150 • www.belgradelakesassociation.org

Specializing in Custom Molding

Free Estimates
Jacking & Sill Repair

New Construction
Complete Renovations

Call Us For Boat Tops, Covers & Interiors

Keep You and Your Boat Clean & Dry

Protect the Interior
Repairs & Alterations
Welcome!

Pontoon Boats 100!

WATERVILLE UPHOLSTERY & CANVAS
(Waterville Auto Top)

1 1/2 Miles West Exit 127, I-95, KMD, Oakland
465-7847

VISA MasterCard



Fishing

The Calm After the Storm

by Mike Guarino



Left: Colby Carrier caught this giant largemouth in the Belgrades earlier this spring. Colby and his dad Denis love going bass fishing together.

Above: Paul O'Connor who spends his summers on Long Pond, caught this dandy spring smallmouth last week.

Mother Nature certainly woke up on the wrong side of the bed this past Memorial Day weekend. That spring storm dropped a lot of rain and brought some serious winds. And while the weekend was a washout, there is a silver lining to the story. After the storm left late Sunday afternoon, the fish went absolutely nuts! The bite continued to be strong through the next few days. We focused mostly on smallmouth and were happy to find a lot of bigger bass in 6 – 10 feet of water. The storm blew most of the smallies off their nests, so we basically left the beds alone and focused on casting on the shallow side of the drop offs. Crank baits were definitely the hot ticket along with plastic swim baits and flukes. We did catch some fish on tubes and Senkos, but the best bite was on the crankbaits. We were using primarily Strike King KVD square bills and the hot colors were red/orange and shad. Sometimes the bass were crushing the baits during a fast retrieve and sometimes they would hit on a stop-and-go action when the bait was moving slowly. So it was difficult to pattern the fish, but fortunately they were

so aggressive that it didn't really matter

One observation after the storm ended was that the northern pike bite slowed down. We only spent one day this week focusing on pike, but the bigger fish were quite lethargic. The smaller pike were active though and were fun to catch on fly rods and light tackle spinning gear. We were catching most of the pike on flashy spoons, specifically on the Williams Warbler and Daredevils. The smaller pike were also taking spinner baits with some regularity. We had better luck when slow rolling the spinnerbait through heavy weeds. The pike seemed to be hanging out right on the edge of the weedbeds. I bet the bigger northern pike will turn on once the water warms up in the next few days. Every year right around this time, it seems like a bunch of lucky anglers catch their dream pike.

So in addition to the great fishing, the wildlife in the area seems to have emerged just fine after the storm. Early in the morning on Memorial Day,

there were deer and turkeys up and down the sides of the roads. They were probably hungry and happy to see the rain had stopped! This is a great time of year to see the critters that call this area home. It's a good idea to take a hike up in the Kennebec Highlands because you never know what you'll see. Words of warning though, bring some bug spray – especially if there's no breeze. Hikers who enjoyed the highlands this past winter noted seeing a few moose in the area. We've also seen quite a few fox, deer and partridge too. There are a lot of different trail options in the highlands, but there are maps scattered throughout the Belgrades and more information on the web site: www.belgradelakes.org.

Good luck this week!

Mike Guarino can be contacted at 465-4333
www.mainewildernesstours.com



Let us take the hassle out of boating!
Daily, 3-Day, and
Weekly Rentals Available

Rentals • Sales • Service

www.belgradeboatshop.com

485-6953

769 Oakland Rd.,
Belgrade ME

Bear Spring
Camps

- Waterfront cottages
- Home-style meals
- Bass, pike, and brown-trout fishing
- Boats, motors, docks
- Sandy beach
- 3.5 hours from Boston
- May-September

on Great Pond in the
Belgrade Lakes Region
www.bearspringcamps.com
207-397-2341



Maine Wilderness Tours

Belgrade Lakes, Maine
207-465-4333

Complete packages for fishing and family vacations
Cottage Rentals, Boat Rentals and Guide Services.
Guided Fishing for trout, pike, bass and striped bass
Canoeing and kayak trips
Drift boat or remote pond fly fishing for brown, rainbow
or brook trout.
Private lakeside cottages available!

www.mainewildernesstours.com

WOODEN BOATS KEPT AFLOAT

Restoration of small wooden and wood canvas
Boats and Canoes



KIMBALL POND BOAT BARN

VIENNA, ME
207-578-0876

kpboatbarn@yahoo.com • <http://boatbarn.wcha.org>



The Village Meddler

Open 6 Days
9am-6pm
Sundays
12pm-6pm
Closed Tuesday

Gifts • Handcrafts

Lake Shore Drive • Belgrade Lakes
495-7707

ALDEN CAMPS
Est. 1911

3 Alden Camps Cove
Oakland, Me 04963
(207-465-7703)

- Lobster Bakes on Friday nights by Reservation
- Lakeside Cottages • Boats & Motors
- Full American Plan
- Dining on the Porch by reservation Saturday through Wednesday

E-mail: info@aldencamps.com • Website: www.aldencamps.com

Why Pay More?
LARGEST SELECTION OF
Beer • Wine
Soda & Liquor

Over 1600 Wines
Great Selection of
Distributor Close-Out Wines
Over 400 Beers including
All Microbrews
Full Selection of Liquor
Debit & Credit Cards accepted

JOKAS' DISCOUNT BEVERAGES

Central Maine's Largest Redemption Center
873-6228 • 52 Front Street • Waterville

The Village Inn
Belgrade Lakes, Maine

Open for Dinner Seven Days A Week 5pm-9pm
Join us at The Tavern At The Village Inn
Lower Level - Open Every Day at 4 pm

Reservations Encouraged
(207) 495-3553
www.villageinnducks.com
"Where Memories Last a Lifetime"

Call 495-3777
to advertise in
Summertime in the Belgrades

Brightside
WOODEN BOAT SERVICES

Boat rentals in Belgrade Lakes.
Classic power, sail and paddle
by the day or week.
Restoration, brokerage and
consultation services also available.

778-1706 cell, 495-3680 home,
brightsidewoodenboat@gmail.com
www.brightsidewoodenboat.com
21 Hulin Rd., Belgrade Lakes, Maine 04918

— Accommodations —

Alden Camps, American Plan cottages, boat rentals, 3 Alden Camps Cove, Oakland, 465-7703, www.aldencamps.com

Among the Lakes Bed & Breakfast, Rt 8, North Belgrade, 465-4900, www.amongthelakes.com

Bear Spring Camps, 60 Jamaica Point Rd., Rome, 397-2341, www.bearspringcamps.com

Belgrade Cottages, 9 Bass Lane, Belgrade, 495-9217, www.belgradecottages.com

Belgrade Vacation Rentals, 81 Main St, Belgrade Lakes, 495-4011, www.belgradevacationrentals.com

Castle Island Camps, American Plan, Castle Island Rd, Belgrade Lakes, 495-3312, www.castleislandcamps.com

The Village Inn, 1 & 2 bedroom suites, Rt 27, Belgrade Lakes Village, 495-3553, www.villageinnducks.com

Whisperwood Cottages, American Plan, boat rentals, 103 Taylor Woods Rd, Belgrade, 465-3983, www.whisperwoodlodge.com

Wings Hill Inn, Rt 27, Belgrade Lakes, 495-2400, 866-495-2400, www.wingshillinn.com

....Notebook continued from page 14

-Waterville Main Street invites participants to join one of the oldest outdoor art shows in the State. The 44th Annual Waterville Intown Arts Fest will take place on Saturday, July 27th. Registration deadline is July 12th; final instruction, including the placement map, will be

mailed the week of July 22. 680-2055

Winslow

• Vendors are wanted for the Winslow VFW Craft Show. The show will be held on Sunday, June 30 from 9 am-2 pm. To reserve space, call 426-8423.



Photo by Connie Fotakis

— Pet World —

....Petworld continued from Issue 1

...If pheromones and withholding food don't help, medications for car sickness and anxiety are available, but many are prescriptions, and it is a good idea to pay a visit to your vet before you travel to see which ones are the safest and most effective for your pet. Also check with your vet before giving any over the counter products; pet dosages are often very different than those for people.

We often remember to check our pets' vaccines before taking them to a boarding facility, but it's just as important to make sure that vaccines are up-to-date before traveling. New places often allow exposure to viruses, bacteria and parasites your dog may not see at home. Rest stops are notorious for being heavily contaminated with parasite eggs and Giardia, and could be a source of viruses such as Parvo for a dog. Never let your dog or cat drink ground water there!

Even if you weren't planning to, it may become necessary to board your pet temporarily when you reach your destination (pet "day care" is sometimes available). Having a record of your pets' vaccine history with you can save some time and ensure your pet is protected while boarding.

Different areas of the country present different challenges. Keeping on schedule with Heartworm preventive, and deworming for intestinal parasites, becomes more important the farther south you travel. Folks who don't have many ticks at home may be

shocked to find several on their dog or cat here in vacationland. Many effective flea and tick prevention products, such as Vectra or Parastar Plus, are available to help combat the ticks and help prevent infection with some of the nasty diseases they may be carrying, such as Lyme disease.

Although we have no documented cases of Canine Influenza in this area, it is a problem in many other states. Ask the advice of your vet before heading out of state. If traveling to Canada, be aware that the Canadian Customs may require that you produce a current Rabies certificate before they allow your pet to cross the border.

It may be tempting to leave your pets in the car unattended while you stop, but this can be a deadly choice for pets. Please keep in mind that the temperature inside a car in the sun can be significantly higher than the outdoor temperature. Dogs and cats cannot cool themselves by sweating except through their tongue and feet and will quickly succumb to heat exhaustion. Leaving them alone in a car running with the AC on is not an option; cars can stall and pets can die.

Wherever your travels take you and your pets this summer, be prepared, and of course, have a safe trip!

Pet World, is a bi-weekly column by Dr. Eleanor Sabeau. She can be reached at Lakeside Veterinary Clinic lakevets@road-runner.com or by phone at 465-7387

AMONG THE LAKES
BED & BREAKFAST

www.amongthelakes.com
Route 8, Belgrade

- Quiet, Quality Accommodations
- Friendly, Heartwarming Home
- Delicious, Hot Country Breakfast
- Air-Conditioned and Heated Rooms
- Lake Access on Great Pond
- Open Year Round

465-4900

CASTLE ISLAND CAMPS

Boats, Bait, Tackle, Gas, Kayaks

Boats, Daily or Weekly
495-3312
Rentals for Long Pond Only



Dining

Augusta

• **Riverfront Barbeque & Grille and Gin Mill Lounge**, 300 Water St., Augusta. 622-8899, www.riverfrontbbq.com

Belgrade

• **Belgrade Lakes Golf Club**, lunch/snacks, West Rd, Belgrade Lakes, 495-4653, www.belgradelakesgolf.com
 • **Pete's Pig**, 81 Main St., Belgrade Lakes Village, 495-4095, www.petespig.com
 • **The Village Inn**, Rte. 27, Belgrade Lakes Village, 495-3553, www.villageinnnducks.com
 • **Whisperwood**, Salmon Lake/McGrath Pond, 103 Taylor Woods Rd, Belgrade, open to the public by reservation only, 465-3983, www.whisperwoodlodge.com
 • **Wings Hill Inn and Restaurant**, Rt. 27, Belgrade Lakes Village, 495-2400 or 800-495-2400, www.wingshillinn.com

Fairfield

• **Cacciatores**, 29 Main St, Fairfield, 872-9700, www.cacciatores.com

Oakland

• **Alden Camps**, Lunch or dinner by reservations, Sat. - Wed., space permitting. 3 Alden Camps Cove, Oakland. 465-7703. www.aldencamps.com
 • **Riverside Farm Market & Cafe**, 291 Fairfield St, Oakland, 465-4439. www.riversidefarmmarket.com

Winslow

• **Lobster Trap & Steakhouse**, 21 Bay St, Winslow. 872-0529. www.lobstertrap-seafood.com.

Winthrop

• **Peppers Garden & Grill**, 357A Main St, Winthrop. 377-8877

Whisperwood Lodge & Cottages

Fishing Boat Rentals on Salmon Lake & McGrath Pond

Located on the South end of Salmon Lake in North Belgrade

All boats shown on our website

Now open to the Public for Dining by reservation only. 465-3983

Breakfast 8:am - 9:am, Dinner served at 5:pm

Daily menu listed on our website

Boat docking available for Lake Residents

www.whisperwoodlodge.com

The Small Garden Guide

Native Plants Are A Great Option

When it comes to sprucing up the farm or yard, native plants are a great option. These plants are indigenous to a particular area and provide advantages when used in the right place.

Native plants are typically low maintenance and resistant to pests if planted in a place similar to their natural surroundings. They also provide food and habitat for native wildlife. Natives boost these advantages because they are adapted to their local surroundings, including the soil and climate, and they have mastered surviving and thriving there.

Many farmers and gardeners recognize the benefits of native plants and are incorporating them into working lands and yards, a practice commonly called "farmscaping" or "conservation landscaping." Incorporating natives into field borders, hedgerows, buffer strips and landscape plantings is a conservation action that helps agricultural production and the environment.

Native trees, shrubs and perennials help:

-Reduce the need for pesticides because native plants attract beneficial insects – including pollinators – and birds that prey on agricultural and garden pests.

-Protect farmsteads, crops and livestock from wind and dust.

-Keep soil in place, enabling it to become healthier and not wash into and pollute waterways.

-Provide wildlife habitat.

-Increase the beauty of the farm and home landscape.

By attracting native birds, bats and beneficial insects, native plants can be an effective way to control insect pests. Birds use native plants for

feed and shelter. They also feed on aphids, snails and codling moths and other insect pests that cause problems for farmers and gardeners. Bats use native trees to roost and can eat more than 1500 mosquitoes in one evening. Some insects, such as ladybugs and spider mites, provide biological pest control.

Native plants attract native pollinators, which are often considered more efficient pollinators. They attract good insects and birds that serve as pollinators for many of the plants that provide the food we eat. In Maine, native bees, attracted by native plants, are important pollinators for wild blueberry, cranberry, apple, strawberry, tomato, cucumber, squash and pumpkin.

Natives aren't just for farmers. They're also perfect for yards, especially to lure birds and butterflies and add beauty. They come in a vast array of colors, blooming and adding interest to the landscape through the year. Many have colorful, decorative leaves in a variety of shapes, or have attractive fruits that last through winter.

Native species can be found at most nurseries. Just remember that most grow best in an area similar to their natural environment with the right amount of sun and water.

For more information visit www.plants.usda.gov or call 622-7847 x 3.

Excerpted from the Kennebec & Somerset County Soil & Water Conservation Districts newsletter, thoughts and ideas section, January 2012

Ballard Meats & Seafood

Custom Cut Meats

- Retail
- Wholesale
- Smoking

1-800-564-6328 • 622-9764

Myrtle St., Manchester, Maine

Belgrade Cottages Guide Service

Guided Fishing Trips Sunset Cruises

Wildlife and Scenic Lake Tours Canoe and Kayak Rentals

Bob Richter 207-314-8469 Great Pond – Belgrade

Cacciatores

"An Italian Steakhouse"

Waterville's Best Dining Experience

Now Serving **PRIME RIB** Fridays and Saturdays

OPEN EVERYDAY LUNCH AND DINNER

Serving Fine Wine & Cordials
Senior Discounts Everyday

Delicious Italian Food
Made with the Freshest Ingredient
Fresh Steaks, Seafood, Pasta, and Salads
Gluten-Free Pasta Available!

29 Main Street • Fairfield
872-9700 (Reservations Accepted)
www.Cacciatores.com

CHARLES S. PIERCE BOOKSELLER

11 Lakeshore Drive
Belgrade Lakes, ME
(Behind Sunset Grille)

207-495-3465
757-635-1098
cpierce@tcc.edu

Maple Leaf Self Storage

Belgrade Me - 3.3 mi off Rte 27 on Route 135
495-2191

Various size units
Owners live on site

Boat / Auto Storage
By foot or unit

Brown House Appliance

71 Francis St.,
Waterville, Maine 04901
207-873-4777
brownhouseappliance.com

Pete's Pig Southern Barbeque

Try Our New Specialty Sandwiches

Stop by the location nearest you

Waterville **Belgrade Lakes**
500 Kennedy Mem. Dr. 81 Main Street
(207) 465-5682 (207) 495-4095
www.petespig.com

Winterberry Farm

your family's local Organic Farmstand

Belgrade's certified organic community farm & farmstand
Open 7 days a week 9-6pm

Summer csa shares available
Includes mushrooms and dairy
Flowers, herbs, greens and veggies

Come visit our horse and oxen powered farm
Where children and veggies grow

Rt. 27 Belgrade, Maine • 207.495.2593
www.winterberryfarmstand.com



-Business Directory-

ACCOMMODATIONS

See page 18

ADVENTURE

Belgrade Canoe & Kayak, Route 27, Belgrade, 495-2005, www.kayakandcanoe.com

Belgrade Cottages Guide Service, fishing, lake tours, canoe/kayak trips and rentals. 9 Bass Lane, Belgrade, 495-9217, 242-9958, 314-8469, www.belgradecottages.com

Maine Wilderness Tours, fishing, canoeing/kayaking, lobster picnic, bird watching, 7 Croquet Lane, Belgrade, 465-4333, www.MaineWildernessTours.com

ANTIQUES

Barbara’s Antique & Collectibles Group Shoppe, Rt 201, 414 Lakewood Rd, Madison, 474-2550, 474-8357

APPLIANCES

Brown House Appliances, 71 Francis St, Waterville, 873-4777, www.brownhouseproperties.com

BANKING

Kennebec Savings Bank, 150 State St, Augusta, 622-5801, www.kennebecsavings.com

Maine State Credit Union, 200 Capitol St, Augusta, 623-1851, www.maine.statecu.org

Skowhegan Savings Bank, 940 Augusta Rd, Belgrade, 1-800-303-9511, www.skowsavings.com

BEVERAGES

Jokas’ Discount Beverage, 52 Front St, Waterville, 873-6228, www.jokas.net

Tree Spirits, 152 Fairfield St, Oakland, 861-2723, www.treespiritsofmaine.com

BICYCLES

Auclair Cycle & Ski, 64 Bangor St, Augusta, 623-4351, www.auclaircycle.com

BOATS

(Besides the categories immediately following, see Canoes and Kayaks, Docks, and Boat Repair.)

BOAT COVERS

Waterville Upholstery & Canvas, 1042 Kennedy Memorial Dr, Oakland, 465-7847

BOAT LIFTS

Hammond Lumber Company, Auburn, Bangor, Belgrade, Boothbay Harbor, Brunswick, Damariscotta, Fairfield, Farmington, Greenville, Pemaquid, Portland, Skowhegan, 866-HAMMOND, www.hammondlumber.com

BOAT MOORINGS

Great Pond Marina, 25 Marina Dr, Rt 27, Belgrade Lakes, 495-2213, www.greatpondmarina.com

BOAT RENTALS

Belgrade Canoe & Kayak, Rt 27, Belgrade, 495-2005, www.kayakandcanoe.com

Castle Island Camps, Castle Island Rd, Belgrade Lakes, 495-3312, www.castleislandcamps.com

Great Pond Marina, 25 Marina Dr , Rt 27, Belgrade Lakes, 495-2213, www.greatpondmarina.com

Whisperwood Cottages, 103 Taylor Woods Rd, Belgrade, 465-3983, www.whisperwoodlodge.com

BOAT REPAIR

Belgrade Boat Shop, 769 Oakland Rd, Belgrade, 465-9720, 485-6953

Brightside Wooden Boat Services, 21 Hulin Rd, Belgrade Lakes, 495-3680, 778-1706, www.brightsidewoodenboat.com

BOAT SALES AND SERVICES

Belgrade Canoe & Kayak, Rt 27, Belgrade, 495-2005, www.kayakandcanoe.com

Clark Marine, 57 Puddledock Rd, Manchester, 622-7011, mail@clarkmarine.biz, funonthewaterstartshere.com

Hamlin’s Marine, 290 West River Road, Waterville, 872-5660, www.hamlinsmarine.com

Mid-Maine Marine and RV, 885 Kennedy Memorial Drive, Oakland, 465-2146, www.midmainemarine.com

Trailside Performance, 797 Augusta Rd (Rt 201), Winslow, 873-2366, www.trailsideperformance.com

BOAT STORAGE

Belgrade Boat Storage, 41 Pinkham’s Cove Rd, Rt 27, Belgrade, 495-3421, 314-3287, www.belgradeboatstorage.com

Belgrade Lakes Marine and Storage, Inc, 366 Augusta Rd, Belgrade, 495-2378, www.belgradelakesmarine.com

Clark Marine, 57 Puddledock Road, Manchester, 622-7011; and Rt 202, Monmouth, mail@clarkmarine.biz, funonthewater-startshere.com

Great Pond Marina, 25 Marina Dr, Rt 27, Belgrade Lakes, 495-2213, www.greatpondmarina.com

Hamlin’s Marine, 290 West River Rd, Waterville, 872-5660, www.hamlinsmarine.com

Kennebec Boat Repair, 907 Oakland Road, Belgrade, 465-9012, www.KennebecBoatRepair.com

Maple Leaf Self Storage, 688 Manchester Rd, Rt 135, Belgrade, 495-2191, 441-5529

Mid-Maine Marine and RV, 885 Kennedy Memorial Dr, Oakland, 465-2146, www.midmainemarine.com

Trailside Performance, 797 Augusta Rd, Rt 201, Winslow, 873-2366, www.trailsideperformance.com

BOOKS

Charles S. Pierce Bookseller, 11 Lakeshore Dr, Belgrade Lakes, 495-3465

Children’s Book Cellar, 52 Main St, Waterville, 872-4543, kidsbookseller@verizon.net

The People’s Book Shop, 605 Wings Mill Road, Mount Vernon/Belgrade line, 620-2392

BOTTLE AND CAN REDEMPTION

Jokas’ Discount Beverages, 52 Front St, Waterville, 873-6228, www.jokas.net

BUILDERS

(See also Kitchens, Plumbing, and Excavating)

All Season Home Improvement Co., 1-800-464-3039, www.all-season.com

Craig’s Carpentry/North Bay Estates, Rt 8, North Belgrade, Craig Alexander, 649-3749

G&L Contracting, 116 Lakeshore Dr, Belgrade Lakes, 495-9009, info@gandlcontractingmaine.com, gandlcontractingmaine.com

LakeHouse Renovations, 242-3663, www.lakehousedesignbuild.com

Mainely Molding & Restoration, P.O.Box 6332 China Village, 634-2821, ejlancaster77@gmail.com

BUILDING MATERIALS

Gagne and Son, 28 Old Rt 27, Belgrade, 495-3313, www.gagneandson.com

Hammond Lumber Company, Auburn, Bangor, Belgrade, Brunswick, Fairfield, Farmington, Greenville, Portland, Skowhegan, 866-HAMMOND, www.hammondlumber.com

CANOES AND KAYAKS

Belgrade Canoe & Kayak, sales and rentals, Route 27, Belgrade, 495-2005, www.kayakandcanoe.com

Belgrade Cottages Guide Service, trips and rentals. 9 Bass Lane, Belgrade, 314-8469, www.belgradecottages.com

Kimball Pond Boat Barn, wood-canvas canoe restoration, 23 Day Road, Vienna, 249-2814, 578-0876

Somerset Stone Center, sales, 1078 Kennedy Memorial Drive, Oakland, 465-9800, www.somersetstonecenter.com

CLOTHING

New Balance Factory Outlet, 12 Walnut St, Skowhegan, 474-6231, www.newbalance.com, nbfactorystore.com

COMPUTER CONSULTANTS

Macintosh Solutions Consultant, Michael Breault, 24 Welch Rd, Wilton, 645-5083, cell 578-0226, m.o.breault@michaelbreault.net, www.michaelbreault.net

DINING

(See Dining Directory on page 19)

DOCKS

G&L Contracting, 116 Lakeshore Dr, Belgrade Lakes, 495-9009, info@gandlcontractingmaine.com, gandlcontractingmaine.com

Hammond Lumber Company, Auburn, Bangor, Belgrade, Boothbay Harbor, Brunswick, Damariscotta, Fairfield, Farmington, Greenville, Pemaquid, Portland, Skowhegan, 866-HAMMOND, www.hammondlumber.com

Trailside Performance, 797 Augusta Rd, Rt 201, Winslow, 873-2366, www.trailsideperformance.com

ELDER CARE

Maine-ly Elder Care, 28 Center St, Oakland, 465-3249, www.maine-lyeldercare.com

ENGINEERING

Thayer Engineering, septic design, storm water mitigation, permitting, 17 Hasson St, Farmingdale, 582-7762,

EXCAVATING

Belgrade Boat Storage, 41 Pinkham’s Cove Rd, Belgrade, 495-3421, 314-3287, www.boatstorage.com

David Stevens, P.O.Box 146, Belgrade, 465-3815, cell 314-0314

EYE CARE

Maine Eye Care Associates, 325 E. Kennedy Memorial Dr, Waterville, 873-2731, www.MaineEyeCare.com

FARMSTANDS

Riverside Farm Market & Cafe, 291 Fairfield St, Oakland,



465-4439, www.riversidefarmmarket.com
Winterberry Farm, 538 Augusta Rd, Rt 27, Belgrade,
495-2593, www.winterberryfarmstand.com

FINANCIAL PLANNING
Golden Pond Wealth Management, 129 Silver St,
Waterville, 873-2200, www.goldenpondwealth.com

FIREWOOD
J & M Logging, Inc. 853 Civic Center Dr., Augusta, 622-6353

FLOORING
Hammond Lumber Company, Auburn, Bangor, Belgrade,
Boothbay, Brunswick, Damariscotta, Fairfield, Farmington,
Greenville, Pemaquid, Portland, Skowhegan, 866-HAM-
MOND, www.hammondlumber.com

FLOWERS AND PLANTS
Pierce's Greenhouse, 407 Belgrade Rd, Oakland, 465-7788

GALLERIES
Artisan's Barn, 163 North Rd, Readfield. 685-9787,
www.theartisansbarn.com
Spring Gallery, bronze castings: Online Exhibition and at
MLRC, Belgrade Lakes, 495-3113,
www.springgallerymaine.com

GIFTS
Day's General Store, 180 Main St, Rt 27, Belgrade Lakes,
495-2205, www.go2days.com
The 1830 House on Long Pond, 134 Main St, Belgrade Lakes
Village, 495-3277
The Village Peddler Gift Shop, Lake Shore Dr, Belgrade
Lakes, 495-7707

GOLF
Natanis Golf Course, 735 Webber Pond Rd, Vassalboro,
622-3561, www.natanisgc.com

GROCERIES
Day's General Store, 180 Main St, Rt 27, Belgrade Lakes,
495-2205, www.go2days.com

HEALTH CENTERS
Belgrade Regional Health Center, 4 Clement Way, Belgrade
Lakes, 495-3323, www.healthreachchc.org
Inland Hospital, The Clinic at Walmart, walk-in health care,
80 Waterville Commons Dr, Waterville, 680-2110, 861-3000,
www.inlandhospital.org

ICE CREAM
Day's General Store, 180 Main St, Rt 27, Belgrade Lakes,
495-2205, www.go2days.com

JEWELRY
Larsen's Jewelers, 57 Main St, Waterville, 872-6301,
800-697-1874, www.larsensjewelers.com
L.Tardif Jeweler, 62 Main St, Waterville, 872-7542,
800-834-3638

KITCHENS
Hammond Lumber Company, Auburn, Bangor, Belgrade,
Boothbay, Brunswick, Damariscotta, Fairfield, Farmington,
Greenville, Pemaquid, Portland, Skowhegan,
866-HAMMOND, www.hammondlumber.com

LAKE ASSOCIATIONS & RESOURCES
Belgrade Lakes Association (BLA), Long Pond and Great
Pond, PO Box 551, 137 Main St, Belgrade Lakes, 512-5150,
www.belgradelakesassociation.com
Maine Lakes Resource Center, PO Box 431, 137 Main St,
Belgrade Lakes, 495-3617, 620-6029,
www.mainelakesresourcecenter.org

LANDSCAPING
Fieldstone Gardens, 55 Quaker Lane, Vassalboro, 877-3526,
www.fieldstonegardens.com
G&L Contracting, 116 Lakeshore Dr, Belgrade Lakes,
495-9009, info@gandlcontractingmaine.com,
gandlcontractingmaine.com
Lakeside Landscape, 13 Station Rd, Belgrade, 465-3039,
831-7053, 632-1086, lakesidelandscape1@yahoo.com
Lynch Landscaping, Skowhegan, 474-2420,
lynchlandscaping.com
Native Notions, 213 West Rd, Belgrade, 495-6040, 314-9538,
nativenotions@hotmail.com, www.nativenotionslandscape.com

MEATS
Ballard Meats & Seafood, Myrtle St, Manchester, 622-9764,
1-800-564-6328

MOVIE THEATERS
Railroad Square Cinema, call for titles and times, 17
Railroad Square, Waterville, 873-6526,
www.railroadsquarecinema.com

PEST CONTROL
Maine Mosquito & Pest Services, 797-0498, 622-6600,
www.mainepestservices.com

PHYSICAL THERAPY
Dockside Physical Therapy, 47 Main St, Belgrade Lakes,
495-3195, 512-2544, Fax 512-2545

PIANO LESSONS
Diane Gorman, Gorman3366@roadrunner.com, 906
Manchester Rd, Belgrade, 495-3222

PICTURE FRAMING
The Framemakers, 46 Main St, Waterville, 872-8927,
www.theframemakers.com

PLUMBING
Paul Hanna's Plumbing, Belgrade Lakes, 495-3805

PRINT, MAIL & MORE
Color Storm, Inc, Main St, Belgrade Lakes, 592-5990

REAL ESTATE DEVELOPMENTS
North Bay Estates, Belgrade, 649-3749, crgsnbe@yahoo.com

REAL ESTATE
Coldwell Banker Thomas Agency, 75 Main St, Winthrop,
377-2121, www.coldwellbankerthomas.com
Day's Real Estate, 262 Augusta Rd, Rt 27, Belgrade Lakes,
495-3111, 1-888-495-3111, www.daysrealestate.com
Lakepoint Real Estate, 221 Main St, Belgrade Lakes,
495-3700, www.belgradelakepoint.com
Rizzo Mattson Realtors, 219 Capitol St, Aigista. 622-9000.
800 894-7979, www.rizzomattson.com
Sprague & Curtis Real Estate, 75 Western Ave, Augusta,
623-1123, www.spragueandcurtis.com

RESERVATIONS
See page 20

RESTAURANTS
(See Dining Directory on page 21)

RETIREMENT COMMUNITIES
Granite Hill Estates, 60 Balsam Dr, Hallowell, 626-7786,
1-888-321-1119, www.granitehillestates.com

SCHOOLS
St. Michael School, grades pre-K through 8, 56 Sewell St,
Augusta, 623-3491, www.smsmaine.org

SEAFOOD
Ballard Meats & Seafood, 55 Myrtle St, Manchester,
622-9764, 1-800-564-6328
Lobster Trap & Steakhouse, 15 Bay St, Winslow, 872-0529,
www.lobstertrap-seafood.com

SECURITY SYSTEMS
Cayer Security Services, Inc, 208 College Ave, Waterville,
453-9177, www.cayersecurity.com

SELF STORAGE
Maple Leaf Self Storage, 688 Manchester Rd., Rt 135,
Belgrade, 495-2191

SHOES AND SNEAKERS
New Balance Factory Outlet, 12 Walnut St, Skowhegan,
1-877-623-7867, www.newbalance.com

SPAS
Belgrade Lakes Wellness Center and Day Spa, 495-2560,
www.belgradelakesdayspa.com


STONEWORK
Gagne and Son, 28 Old Rt 27, Belgrade, 495-3313,
1-800-339-3313, www.gagneandson.com
Somerset Stone Center, 1078 Kennedy Memorial Drive,
Oakland, 465-9800, www.somersetstonecenter.com

STOVES
Somerset Stone Center, 1078 Kennedy Memorial Drive,
Oakland, 465-9800, www.somersetstonecenter.com

THEATER
The Theater at Monmouth, Cumston Hall, off Rt 135,
Monmouth, 933-9999, www.theateratmonmouth.org

VETERINARY SERVICES
Lakeside Veterinary Clinic, 88 Libby Hill Rd, Oakland,
465-7387, 465-8387, www.lakevets.com

WINDOWS
Hammond Lumber Company, Auburn, Bangor, Belgrade,
Boothbay, Brunswick, Damariscotta, Fairfield, Farmington,
Greenville, Pemaquid, Portland and Skowhegan,
1-866-HAMMOND, www.hammondlumber.com
Windows Plus, 5 Cushman Rd, Winslow, 872-8776,
www.windowsplus.me



*Advertising in
Summertime in the Belgrades
really works! Call 207-495-3777
for rates and information.*



-Conservation Too-

We all know that it's hard to beat locally grown produce. It's often fresher and tastier, uses less energy for transport, and helps farmers in our communities. But the off-season presents a big challenge for farmers who grow fruits and vegetables and for consumers who want to find local produce throughout a longer season. When farmers can lengthen the growing season, even by several weeks, their options change. That's why the USDA's Natural Resources Conservation Service (NRCS) promotes seasonal high tunnels as such a powerful tool.

High tunnels are what most of us call "hoop-houses" - plastic-wrapped, metal-framed structures that are fairly easy and inexpensive to build. They are designed to extend the growing season into the colder months, helping to increase the availability of local produce, keep plants at a steady temperature and even conserve water and energy.

High tunnels are similar to greenhouses, except they are passively heated. That means they do not require electricity to heat - only sunlight. The plastic on the frame actually provides enough insulation to add an average of 8 extra weeks to the growing season in our region. The inside of a high tunnel boasts its own microclimate, often producing crops of higher quality and quantity than those in traditional farm fields. High tunnels are also different than greenhouses in that the plants are actually in the ground, not in pots or on tables. You can think of it as a plastic covering over a field.



A passively-heated plastic and metal high tunnel is relatively inexpensive and easy to construct.

(Photo: Rising Up Farm, Belfast. Courtesy NRCS)

High tunnels can cut costs for the producer by conserving water and requiring fewer inputs, like fertilizers or pesticides. In high tunnels, these inputs are often applied through tubes that run along the base of the plants, allowing water and fertilizer to be delivered directly above the soil. Outside of high tunnels, these inputs are often dispersed on a larger scale and require more to ensure the plants receive an adequate amount.

NRCS helps farmers build high tunnels, providing technical expertise and funding. NRCS started helping farmers incorporate high tunnels into their operations in 2009, and in the three years since, more than 7,200 high tunnels were built across the United States. 63 of those high tunnels have been built or are being built in our region - 18 in Kennebec County. To learn if a high

tunnel is right for you and your land, contact your USDA NRCS Service Center in Kennebec and Lincoln Counties. Call Peter Abello at the Augusta Service Center at 622-7847 x3.

About NRCS:

USDA's Natural Resources Conservation Service helps America's farmers and ranchers conserve the nation's soil, water, air and other natural resources. All programs are voluntary and offer science-based solutions that benefit both the landowner and the environment. Learn more at www.me.nrcs.usda.gov or contact your local USDA NRCS Service Center.

For information about any of our Kennebec District conservation projects please contact Dale Finseth at 622-7847, x 3 or check our website at www.kcsxcd.org. Our partner from Knox-Lincoln SWCD prepared this article with NRCS assistance.



BELGRADE REGIONAL HEALTH CENTER

4 Clement Way, Belgrade, ME 04917 • (207) 495-3323 • www.BelgradeCHC.org
Health Care Providers: Amy Madden, MD • Megan O'Brien, FNP • Jessica Hopkins, LCSW • Tammy Gannaway Kerr, FNP
Practice Manager: Wendi Wainer

Summer 2013

Dear Belgrade Community:

Welcome to the beautiful Belgrade Lakes Region. We at the Belgrade Regional Health Center hope you enjoy your stay and enjoy good health during your visit. We look forward to the return of our summer residents, as well as visitors to the area.

In case you do have a health concern while visiting, we are available to treat acute problems, as well as chronic health conditions. Please call us for an appointment at 495-3323. We will see you as soon as possible at the health center. Our appointment hours are Monday through Friday, 8 a.m. to 12:30 p.m. and 1:30 p.m. to 4:30 p.m., and Tuesday evening from 5 to 7 p.m..

If you have a major medical emergency such as chest pain, a severe breathing problem, cardiac condition, or major trauma, please call 911 or go to the nearest emergency room.

If you have a minor health condition such as poison ivy, a fish hook, laceration, etc, please try to call before arriving at the health center. We accept patients on a walk-in basis, but you will be asked to wait until our regularly scheduled patients are seen. If you call ahead, we can give you a scheduled appointment and likely reduce your wait.

We are located at 4 Clement Way, just off Route 27, 3 miles north of the intersection of Routes 27 and 135. We look forward to seeing you for any of your healthcare concerns. For more information call 495-3323 or visit www.BelgradeCHC.org.

Sincerely,

Amy Madden, MD
Megan O'Brien, FNP
Jessica Hopkins, LCSW
Tammy Gannaway Kerr, FNP
Wendi Wainer, Practice Manager



A proud member of HealthReach Community Health Centers

Sprague & Curtis Real Estate

spragueandcurtis.com

6 2 3 . 1 1 2 3

75 Western Ave. • Augusta, ME



WINTHROP - ANNABESSACOOK-
Spectacular Colonial Revival that has been updated to perfection. Custom gourmet kitchen, 4 fireplaces, gracious floor plan and plenty of space. Offering 20+/- acres of land all the way to Annabessacook Lake. A rare find! **COME SEE! #1078480 \$599,000**



AUGUSTA - KENNEBEC RIVER - A PRIVATE PARADISE! - Beautiful 15ac property w/pristine setting & Kennebec River waterfront, nice Ranch w/4BR, 2BA, formal DR, sunroom w/lots of glass, apple orchard view, lrg oak kitchen, ample closets. Pretty tract of land, former apple orchard. **#1093160 \$259,900**



MOUNT VERNON - TORSEY - Gorgeous sunsets! Lake views through-out the home. Deep water. Nice flow for gatherings. New addition & remodeled in 2003, modern, well insulated, radiant heat, quality built. Custom kitchen, DR & breakfast nook, deck & nice gradual frontage. Lots to enjoy. **#1090116 \$399,900**



JEFFERSON - Immaculate 2 BR ranch style home w/2 car garage & above ground pool. Beautiful custom oak kitchen & large dining area open to the LR. FR addition all in knotty pine in 2005. New roof 2006. Very nice location. **#1071352 \$139,900**



FAYETTE - PARKER POND - Pristine Parker Pond, Western exposure, sandy, gradual entry waterfront. Peaceful screen porch, open kitchen and living room, two bedrooms down, and sleeping loft up. Newer roof, windows and siding. Fully insulated, newer posts and pads. **#1034412 \$229,900**



PALERMO - CROTCH POND - PARADISE FOUND! - Private year round log home on 144 acres w/800' waterfront on Crotch Pond! 3BR, 2BA, beautiful stone fireplace, heated porch, deck, 3 car garage. Property offers abundant wildlife for year round or vacation getaway. **#1092627 \$295,000**



AUGUSTA - THREE CORNER POND - Enjoy year-round waterfront living in rural Augusta- 1990 Cape 2-3BR, 2BA on 2 Acres. Great screened porch lakeside. Master bedroom suite w/ jacuzzi. Full walkout lower level. Well maintained! Bass fishing- boat & dock included. Nice wooded setting. **#979050 \$200,000**



MANCHESTER - COBBOSSEE LAKE - Spectacular Cobbossee Lakefront-Gorgeous 4,500+SF 4-5BR, 3.5BA custom brick home. Quality throughout, superb workmanship. Spectacular 4 acre lot w/over 350' of prime frontage! Gorgeous setting, expansive Westerly lake views. **IMPRESSIVE! #1073752 \$2,300,000**



SIDNEY - MESSALONSKEE - Remarkable Log home on beautiful Messalonskee Lake! Unique property with bunkhouse/garage & your own tennis court! Spectacular interior with stone fireplace, wood beams & cathedral ceilings. Year round or seasonal living. **#1038013 \$499,000**



Business

The Belgrade Public Library will celebrate its new location and its new look on Sunday, June 30 at a ribbon cutting ceremony sponsored by the Friends of the Belgrade Public Library. The 1-4 pm event at 124 Depot Road will include light refreshments, entertainment and a viewing of the new facility. The ceremony and celebration is open the public.

The Friends would like to thank all of the members, volunteers and donors for their continued support of the new library. Fundraisers that are planned for the summer of 2013 include:

- The 3rd Annual Yard Sale on Saturday, June 15, 8 am-2 pm at Day's Real Estate, Route 27, Belgrade Lakes.
- The 4th of July Book Sale in the center of Belgrade Lakes Village on Thursday, July 4, 9 am-2 pm. There will also be homemade pies for sale. For more information contact 649-4238.
- The 5th Annual Golf Tournament – the Ed Salmon Memorial Golf Tournament – on Thursday, July 11 at the Belgrade Lakes Golf Course with a 12 pm tee off time and a scramble format. Following the tournament there will be a cocktail/buffet beginning at 5:30 pm; separate tickets are available to this part of the event, which will include an awards ceremony and live and silent auctions. Tom Alter of the PGA tour will be the MC and Dexter (Buzz) Bridges, the Belgrade Lakes postmaster, will be the auctioneer. For more information call 495-2101.
- The 4th Annual 5K Road Race (walk, run, jog) on Saturday, July 27 at Belgrade Central School. The first

Ribbon Cutting June 30 at Belgrade Public Library



The 5th Annual Golf Tournament – the Ed Salmon Memorial Golf Tournament – will be held on Thursday, July 11 at the Belgrade Lakes Golf Course to support the Belgrade Public Library.

200 participants who pre-register on line or by mail by July 15 will receive a free t-shirt.

• An evening of entertainment by Britannica, Acoustic Duo at the Belgrade Center for All Seasons in Belgrade Lakes on Saturday, August 10. This exceptional vocal duo (Ted and Pete) will be playing and singing music from the Beatles, Moody Blues, Rolling Stones, Jimi Hendrix, the Kinks and others. Advance tickets may be purchased at Day's Real Estate. For more information

call 495-2286.

The money from these fundraisers will go towards the maintenance of the new library building and grounds, including heat, lights, janitorial services, plowing and mowing. Membership dues are \$10 a year and may be sent to Friends of the Belgrade Public Library, PO Box 474, Belgrade, ME 04917. For more information call 495-2101.



SAVE MONEY WITH A BI-WEEKLY MORTGAGE

Ever wonder why most banks won't offer you a bi-weekly mortgage – even though it can save you thousands? It's because bi-weekly mortgages are tougher for banks to sell. **At Skowhegan Savings – we don't do that,** we never sell your loans. We customize mortgages to fit your needs, including bi-weekly payment plans that shorten your loan period and reduce the amount you pay in interest.

That's Skowhegan Savings.



Skowhegan Savings

Straight Talk. Fair Deals.

Pick your own term and select a bi-weekly mortgage –

.25%
rate reduction

when payments are made from a Skowhegan Savings account.

Other rates and terms available.

SkowheganSavings.com

800.303.9511



BELGRADE | BINGHAM | DEXTER | FAIRFIELD | JACKMAN | MADISON | NORRIDGEWOCK | PITTSFIELD | SKOWHEGAN



Golden Pond Wealth Management

129 Silver Street
Waterville, ME 04901
(207-873-2200)



Should your investment portfolio leave Wall Street and move to Golden Pond?

Maybe it's time to invest where the "owners are in the store", and our profits are invested back into the local community.

Since 1996, a locally-owned firm whose advisors are affiliated with LPL Financial, the nation's #1 Independent broker/dealer. As reported by Financial Planning magazine, June 1996–2012, based on total revenue.

www.goldenpondwealth.com

Securities offered through LPL Financial



24-Hour Delivery and Setup!

Contact us for a **FREE SHORELINE ASSESSMENT**

We have 48 ShoreMaster installation crews available statewide for delivery and installation* of ShoreMaster docks and boat lifts within 24 hours if necessary.

*Installation extra charge - Call for details.

LARGEST SHOREMASTER DISTRIBUTOR in the COUNTRY



MAINTENANCE-FREE ALUMINUM PRODUCTS

Factory Direct Savings
Lightweight & Durable
Dock Furniture

Standing Docks
Wheel-A-Docks
Floating Docks

Free Delivery to Most Areas
Boat Lifts, Gangways
Swim Rafts - Ladders

Call today for a 52-page Product Planning Guide & Price List or visit us online at www.hammondlumber.com/shoremaster

Hammond Lumber Company

Toll-free 1-866-HAMMOND

AUBURN • BANGOR • BELGRADE
BOOTHBAY HARBOR • BRUNSWICK
DAMARISCOTTA • FAIRFIELD
FARMINGTON • GREENVILLE
PEMAQUID • PORTLAND • SKOWHEGAN

Lakepoint REAL ESTATE

207.495.3700

221 Main St.,
Belgrade Lakes, ME 04918
www.belgradelakepoint.com



HAMILTON POND, BELGRADE :
Year-round in Belgrade w/140' +/- frontage on Hamilton Pond. 3 bedrooms, 3 baths, Jacuzzi tub, deck, dock, gazebo, heated garage.
MLS# 1090523 \$189,500



FLYING POND, MT VERNON: Cozy cottage w/200' +/- on Flying Pond w/2 ac, dock, screen-room w/outside kit, BBQ unit, open kit concept w/soap stone island, sun room w/views.
MLS# 1071477 \$157,000



TAYLOR POND, MT VERNON: Year-round w/164' +/- on Taylor Pond. Eat-in Kit, LR w/fp, 2 BR, 1 car gar, and bonus room for office or play. Tranquil views of the pond.
MLS#1069313 \$119,500



WEBBER POND, VASSALBORO: Sunny open floor plan w/expansive lake views. Cherry floors, hickory cabinets, stone fireplace, radiant heat, large decks, sandy beach, sunset views. **MLS# 1093147 \$465,000**



LONG POND, BELGRADE: Sandy Cove custom built w/sunny open flr plan, lots of windows, lge sunroom, quality woodwork throughout, western views, close to golf course.
MLS# 1090311 \$499,000



MESSALONSKEE LAKE, OAKLAND: Nice 2 BR cottage w/great sunsets. Lge glassed-in porch & deck, updated septic, great rental opp.
MLS# 1095317 \$239,900



NORTH POND, SMITHFIELD: 3 BR cottage right next to the water. Large glassed in porch w/sunset views. Many updates, plenty of storage underneath and comes fully furnished. **MLS# 1092056 \$199,900**



LONG POND, ROME: Year-round 3BR/2.5BA, 1.7 wooded acres. Large living room w/stone FP, comfortable sunroom w/radiant heat and granite countertops. 200' +/- w/dock and float. **MLS# 1088879 \$595,000**



NORTH POND, SMITHFIELD: 3BR Cottage just feet from water's edge. Amazing porches, large rooms, fully furnished, beautiful sunsets from the deck overlooking the water. **MLS# 1087556 \$225,000**



Exceeded 90th Percentile in Holleran's 2011 National Resident Satisfaction Survey!



Stop and smell the roses.

Summer is full of flowers at Granite Hill Estates, Kennebec Valley's premiere continuing care retirement community, a member of the MaineGeneral Health family.

- spacious apartments & cozy cottages in a gorgeous setting with easy access to the hills and lakes of central Maine
- an extensive library
- an indoor swimming pool
- a fully equipped fitness center with a full schedule of fitness classes
- outstanding amenities and services

Enjoy independent living in a beautiful country setting.

Call 207-626-7786 or toll free 1-888-321-1119 today to schedule a tour or visit our website at granitehillestates.com.



GRANITE HILL ESTATES
Retire your way. Today.

PICK THREE. SAVE TWENTY.



Take 20% OFF

any three items with this ad

Shoes (sizes 2A-6E), athletic apparel and accessories for the whole family!

*Valid with this coupon only, through September 30, 2013

*Only valid at the New Balance Factory Store
All shoes **FACTORY SECONDS/DISCONTINUED** styles. Discounts off factory store prices. Cannot apply to prior sales, sale prices, or other offers. One coupon per purchase.

SKOWHEGAN, ME
12 Walnut St.
1-877-623-7867



achieve new balance™

OXFORD, ME
19 Industrial Drive
1-877-623-7867

For first quality merchandise, call 1800.253.SHOE.
Sorry, above offers not valid at dealer stores.

