

Summertime in the Belgrades



... Serving the Central Maine Lakes & Kennebec River Corridor

— A Cider Mill Press Publication —

VOLUME 14, NUMBER 10

Meet Your New Regional Hospital

by Esther J. Perne



July 23, 2012: "The Topping Ceremony," the last beam went into place, celebrated by putting up a small evergreen beside the American flag.



The new MGMC Regional Hospital: six months ahead of schedule.

Fortunate are the residents, the visitors, the retirees who will enjoy proximity to world-class health care, a state-of-the-art hospital, the most technologically advanced operating theater in New England, and private corridors for patients leading to all private rooms.

Fortunate, too, are the many travelers on the Old Belgrade Road in North Augusta who get to see the incredible growth at the new regional hospital con-

struction site where the project is six months ahead of schedule and the daily progress is so efficient and well organized that the projected opening is December 2013.

Add to the new hospital agenda the plans to convert Waterville's Thayer Hospital into the largest Comprehensive Outpatient Center (outpatient care is the fastest growing segment of health care today) in the State with 24/7 emergency service and the future of local health services is looking

really good.

Take that operating theater, for example. It will have 8 rooms, including a cardiac cath lab and 14 recovery bays. There will also be 34 same-day surgical beds, all private, a patient family area, and 192 private rooms where patients are less likely to get infections and where families can stay.

The building itself is LEED certified in energy

Continued on page 2

Mid-Maine Marine Inc.
885 Kennedy Memorial Drive, Oakland, ME 04963
1/2 Mile West of Exit 127 off I-95 • 1-800-649-2628
www.midmainmarine.com

2012 Close Out Sale

Cruiser CX200
Fishing FX200
Deluxe SL200

Pontoon Boat Packages to CELEBRATE Summer 2012

Wings Hill
Inn & Restaurant

Gourmet Dining
Culinary Institute Chefs
Casually Elegant Accommodations
Attentive Service

BELGRADE LAKES
www.wingshillinn.com
207-495-2400

CIRCA 1800

#1 INDEPENDENT OLD TOWN DEALER IN THE WORLD

Old Town

DEMO POND

Kayaks and Canoes

KAYAK & CANOE RENTALS
Great Selection of Paddles and Life Jackets
Belgrade Lakes and Stream Group Tours
Outlet Prices
• Old Town • Necky • Ocean Kayak

100's in Stock

BELGRADE CANOE & KAYAK
Route 27 North, 9 Miles from Augusta Civic Center
495-2005 • cell 242-6331



Continued from page 1



The prefabricated wall panels are made in Portland.



The construction site employs 600 workers; 92% of them are from Maine; most are local.



The Big Red Crane stands 310 feet tall, 5 feet taller than the Statue of Liberty, and required FAA notification for operation. and environmental design as signified by resource conservation, recycle-based materials and vendor proximity.

Inside, the emphasis will be on how environment positively influences care and recovery. Each floor will be themed by images evocative of Maine: fields, rivers, forests, and mountains, warm, welcoming wood tones, and color cues.

A primary drive for the new hospital and its design is the changing nature of the practice of medicine. Physicians today, according to MaineGeneral, want a more balanced life (for instance, not being on call 24/7, being with families more) and want to work in larger groups. The need for specialty services is moving forward. Better facilities attract new doctors. This year alone 31 new doctors have moved to the area and joined the MaineGeneral staff.

On July 23, 2012 an historic event took place at the New Regional Hospital. The final steel beam, signed by supporters and community members, was put in place and decorated with a fir tree for all those travelers on the Old Belgrade Road and the region's residents and visitors to see.



**Our customers walk all over us.
And we just love it!**

www.gagneandson.com

GAGNE & SON
CONCRETE PRODUCTS

BELGRADE AUBURN WESTBROOK SACO KITTELY NAPLES TOPSHAM HOLDEN
RETAINING WALL BLOCK INTERLOCKING PAVERS CLAY BRICKS POSTS COBBLESTONE SLATE GRANITE STEPS CONCRETE BLOCKS BENCHES

Hamlin's Marine

Scout BOATS
The Power of Innovation

YAMAHA

• PONTON BOATS • FISHING BOATS • SKI BOATS • RUNABOUTS • CRUISERS

Two Locations! Financing Available

290 West River Road,
Waterville • 207-872-5660

581 Main Road North,
Hampden • 207-907-4385

www.hamlinmarine.com

Walmart shopping list:

- ✓ paper towels
- ✓ bread and milk
- ✓ cholesterol screening

No appointment needed!

TOGETHER We're Stronger

Wellness Screenings

\$29 - Cholesterol

\$35 - A1C Testing

\$99 - Full Screening with Consultation

Screenings offered by caring providers from Inland Hospital.

For more information call 680-2110

or visit www.inlandhospital.org

Inland Care. Walmart Convenience.

Walk-in Care at The Clinic at Walmart,
80 Waterville Commons Drive, Waterville

Each medical clinic located in a Walmart store is owned and operated by an independent company that is unaffiliated with Walmart. Walmart does not employ any health care professionals or exercise any control over the provision of health care services at the clinics.



Table of Contents

New Regional Hospital..... 1-2

Gawler Concert to Benefit Belgrade Library..... 3

“The Thinking Heart” at the Holocaust Museum..... 4

Milfoil Prevention is Still the Key 5

Meet Author Kate Braestrup..... 5

AugustaFest 2012..... 6

Notebook, News, Notes..... 7

Directory of Markets, Museums, More 8-9

Calendar of Events..... 10-11

ArtWalk Gardiner Celebrates Summer..... 12

Katy's Column..... 13

Belgrade Lakes Region Map..... 14-15

Milfoil Harvesting With the DASH..... 16-17

Upcoming: More Great Events..... 18

KLT Working To Preserve Two New Properties 19

Accommodations and Reservation Services..... 20

Dining Suggestions 21

Support Sue: Walk to Defeat ALS 21

Business Directory: Goods, Services, Shops 22-23

Gypsy Jazz! Enjoy It in Oakland..... 24

Fishing with local guide Mike Guarino..... 25

Pet World: Water Works..... 26

Business: Ten Million Dollar Challenge..... 27

The Gawler Family Concert



The Friends of the Belgrade Public Library are sponsoring a concert by the Gawler Family and Friends at the Center for All Seasons, Route 27 in Belgrade on Friday, August 10, 2012 starting at 7 P.M. The cost is \$10 for adults, \$5 for children, and children under 5 are free. There will be a 50/50 raffle and refreshments will also be available.

The Gawler Family has generously entertained the public at these fundraisers for a number of years. Their concerts have been popular and enthusiastically attended by summer, year round, and area residents. Proceeds from these concerts have gone into the renovation fund for a larger library for Belgrade.

The larger library will go from the current 400 square feet of space at the current location, the Center for All Seasons in Belgrade Lakes, to 1,800 square feet at the new location. The renovation project and addition to the former Paul Hammond house located next to Belgrade Central School on the Depot Road is beginning this month. The "Friends" are very excited to report that they are close to their fundraising goal. Local contractors are being employed for this project. Construction will be completed by the middle of November when the Library Trustees and librarian will take over the job of furnishing and setting up the library. Please check out the progress at the site during the summer months! The "Friends" thank everyone for their continued support of this project. We hope to see you at the concert on the 10th! If you need more information about the project or the concert you may contact any of the Friends of the Belgrade Public Library Board members: Judy Johnson, President 495-2101; Beverly Megill, Vice President 495-2286; Linda Sprague, Secretary 496-2075 or Diane Bourque, Treasurer 465-4915. You may also check out our website: www.friendsofbelgradepubliclibrary.org or our facebook page, Friends of the Belgrade Public Library.



Summertime in the Belgrades

--A Cider Mill Press Publication--

PO Box 290, Belgrade Lakes, ME 04918

Editor: Esther J. Perne, 207-495-3777 • ebelnews@earthlink.net

Advertising Director: Erle Morse, 207-495-3777 • ebelnews@earthlink.net

Layout Design: Michael Breault, 207-578-0226 • mo.breault@gmail.com

Webmaster : Gregor Smith • gregor@roadrunner.com

www.sumbelnews.com

This publication is copyrighted ©MMXII, Cider Mill Press Publications, All Rights Reserved.

Lakeside Landscape

Landscape Design and Installation

Come check our Retail Center

9AM-3:30PM Monday-Wednesday-Friday

- Planting (Trees, Shrubs)
- Mulch
- Walkways and Patios
- Erosion Mulch
- Retaining Walls
- Loam
- Natural Stonewalls
- Stone and Gravel
- Maintenance & Mowing
- Gravel
- Delivery available!!

Near junction of Routes 8 & 11

Phone: 207-465-3039

Cell: 207-831- 7053

E-mail:lakesidelandscape1@yahoo.com

13 Station Rd.
PO Box 407
Belgrade, ME 04917

NORTH BAY ESTATES

ROUTE 8 • NORTH BELGRADE

~ FOR SALE ~

Custom Built Homes

by *Craig's Carpentry*

1 & 2 acre lots

with lake views from

Great Pond overlook

Craig Alexander

cell (207) 649-3749 • crgsnbe@yahoo.com

TRAILSIDE Performance

Augusta Rd., Winslow, ME

207-873-2366

EASTERN TOWNSHIPS DOCKS

Boat Lifts Set Up and Delivery Available

Winslow, Maine

Special Pricing on Boat Storage and Shrink Wrapping Service

Huge Inventory of Trailers

Full Line of Husqvarna Power Equipment

Mission Trailers

Utility • ATV

Motorcycle • Cargo



Legacies



Friday, August 10, 2012 (at Monument Park unless otherwise noted)

- 10am – 2:00pm Senior Citizen BBQ at the Community Center
Tickets must be purchased at Town Office by August 3rd
Entertainment by Sonny Perry; Antique Car Show
- 2:00pm – 4:00pm Open House at the Fairfield History House
Cotton-Smith House located at 42 High Street
- 5:30pm – 7:30pm Community BBQ sponsored by the Lawrence Band Boosters
- 6:00pm – 9:30pm Concerts in the Park
Sponsored by the Friends of the Lawrence Public Library

Saturday, August 11, 2012 (at Monument Park unless otherwise noted)

- 7:00am – 8:30am Work up an appetite! Self-guided walking tours
around Mill Island Park
- 7:00am – 9:00am Blueberry Pancake Breakfast @ Community Center
Sponsored by the Fairfield Knights of Columbus
- 9:00am Bike Parade around Monument Park
- 9:00am – 2:00pm Yard Sale at Lawrence Public Library
- 9:00am – 3:00pm Local Vendors in the Park
- 9:30am – 12:00pm Children's Games
Sponsored by SAD #49 Child Care Program
and the Fairfield Church of the Nazarene
- 10:00am Fruit Pie Contest; Pies on sale after judging!
Sponsored by the ladies at Victor Grange
Deliver pies from 9 to 9:30am
- 11:00am – 1:00pm BBQ Lunch sponsored by Boy Scout Troop 460 &
Rock Concert featuring band "Superimposed"
- 12:00pm – 4:00pm Open House at the Fairfield History House
Cotton-Smith House located at 42 High Street
- 1:00pm Guided Walking History Tour
Meet at History House, 42 High Street
- 1:00pm – 3:00pm Various demonstrations in the Park
- 1:00pm – 3:00pm Fairfield's Got Talent! @ the Gazebo
Sponsored by the American Legion Ladies Auxiliary
- 3:00pm – 5:00pm Karaoke @ the Gazebo
- 4:30pm – 6:30pm Public Supper at the Community Center
Sponsored by the Fairfield Knights of Columbus
- 6:00pm – 8:00pm Children's Movie at Lawrence Public Library
Sponsored by the Fairfield Church of the Nazarene
- 6:00pm – 10:00pm Dance Under the Stars
with Steve Colella of 93.5 FM True Oldies

Sunday, August 12, 2012

- 11:00am – 3:00pm Picnic Social at Mill Island Park (weather permitting)
Bring a lunch, bring lawn games, and take a self-guided tour of the island!

At Mainely Molding & Restoration,
our customers are our top priority.

We provide
creative and efficient building solutions.
Whether you are
remodeling, restoring, or building new,
"we can help."

**Mainely
Molding & Restoration**
General Contractor
207-634-2821

Making our client's ideas happen
throughout the Belgrade Lakes.
Member of the U.S. Green Building Council
www.mainelymolding.com

Call
495-3777 to advertise
in
*Summertime in the
Belgrades*



BOOKS, PUZZLES, TOYS, GAMES

A store for children of all ages,
the young and the young at heart.
Open Monday 12 to 5 • Tues. – Sat. 9 to 5
52 Main St. Waterville 872-4543

THE FRAMEMAKERS
For Extraordinary Custom Framing
**Andrew Wyeth
Reproductions**
Conservation-framed
and ready to hang
\$49.95!
46 Main Street • Downtown Waterville
207-872-8927 • www.theframemakers.com

Quality custom framing is not
as expensive as you may think.
Come in for a free estimate!
Our award-winning staff will help you find
the right combination for any budget.
Quality Custom Framing with an
Emphasis on Excellent Customer
Service & Quick Turnaround!

The Thinking Heart: The Life & Loves of Etty Hillesum



The Holocaust & Human Rights Center of Maine will be hosting a performance of Martin Steingesser's "The Thinking Heart: The Life & Loves of Etty Hillesum".

The Thinking Heart is a performance piece with two voices and one cello, based on the journal and letters of Etty Hillesum, a Dutch woman who lived in Amsterdam during the Nazi occupation and died in Auschwitz in 1943. The performance is an original arrangement of her journal and letters in the form of poems written by Martin Steingesser. Esther "Etty" Hillesum was a law student and working as a housekeeper in Amsterdam when word came of the expected summons to the detention Camp at Westerbork. To avoid the summons she applied, at the suggestion of her brother, for a position on the Jewish Council. The appointment permitted her more freedom than many, and she was permitted to make several trips to visit family. She turned down offers to go into hiding as many others did, believing that her work preparing Jews for transport to other camps was more important than her personal safety.

During this period, she wrote many entries in her diary. Prior to her final departure for Westerbork, she gave her diaries to the writer Klaas Smelick with instructions to publish them if she did not return. In the 1950s Smelick made the effort to publish the diaries and two letters he'd received from her at Westerbork, but to no avail. Smelick was unsuccessful until 1981, when his son was able to get the diaries and letters published. In 1983 they were translated to English.

No one in Etty Hillesum's family survived the Holocaust. Her life is remembered with the Etty Hillesum Research Centre at the University of Ghent, and the Etty Hillesum Centre in Deventer, Holland.

Mr. Steingesser is the author of a book of poems, *Brothers of Morning*, and has been performing and teaching throughout Maine for 30 years. "His poems articulate the many seasons of the heart," says former Maine Poet Laureate Baron Wormser. Portland, Maine's first Poet Laureate (2007-09), Steingesser was selected to receive the 2006 Maine Alliance for Art Education's Bill Bonyun Award "for exemplified talent and professionalism as an artist and being an inspiration to students, teachers and the community."

The performance lasts one hour and will be followed by a question and answer session. This performance is a part of the Holocaust & Human Rights Center's 22nd Annual Summer Seminar: Teaching the Nazi Holocaust which runs from August 6 – 10 at the center.

For more information, please contact Liz Helitzer at 621.3532 or email infohhrc@maine.edu

Lynch
LANDSCAPING INC.
FOR THOSE WHO DESIRE QUALITY
207-474-2420

Design - Install - Maintain



Licensed, Certified & Accredited
For All Of Your Landscaping Needs



www.lynchlandscaping.com



Milfoil Matters

Maine officials and state conservation leaders have known about milfoil for years and clearly understood the risks and problems associated with this invasive plant. Their mission has always been to keep it out of our lakes.

Prevention is at the heart of the state milfoil boat sticker program and is the objective of our Courtesy Boat Inspection initiative, which has now been in operation for nearly 20 years.

In 2011, the BRCA Courtesy Boat Inspectors checked 5,285 boats at the public ramps on Great and Long Pond. Over the last five years inspectors have found invasive plants on 5 boats at these ramps ... before those boats were launched into our lakes.

In addition, milfoil was detected on five other boats entering Salmon and East Pond.

The Courtesy Boat Inspection program works. Remember, variable milfoil got into Great Pond at the Route 225 bridge, which is not an authorized ramp and where there are no inspectors. A chain link gate has now been installed at the bridge to prevent further boat launches.

PREVENTION IS CRITICAL TO STOPPING THE FURTHER SPREAD OF MILFOIL

Now that milfoil is in Great Pond, it may seem like this prevention strategy is no longer appropriate. Nothing could be further from the truth. In fact, prevention is now more important than ever.

Yes, variable milfoil is in Great Meadow Stream and North Bay of Great Pond, but it is presently confined to this relatively small area. It hasn't been found growing anywhere else in the lake. Our job now is to keep it contained and prevent it from spreading.

It's also true that as more lakes become infested with milfoil, the more likely it will spread to other nearby lakes and water bodies. This is especially true for Great Pond given its size and volume of boat traffic. If Great Pond becomes overrun with variable milfoil there's a very high probability it will also infest Long Pond and the other lakes in the Belgrade watershed.

The key to stopping this kind of catastrophe is prevention. We've got to prevent this invasive plant from spreading further out into Great Pond and into its neighboring lakes.

The work underway right now in Great Meadow Stream and North Bay is focused on prevention. The milfoil plants are being removed so they can't spread. The goal is get

Prevention is Still Key to Success

by Lynn Matson

95+% of them pulled out before the work ends in late September. Great and Long Pond are also being continuously surveyed to find and remove any new plant growth before it can become established. To date, none has been found.

HOW YOU CAN HELP

Our best long-term defense against the spread of milfoil is a well-informed and vigilant lake community. Here's how you can help:

1. Learn how to identify variable milfoil and always be on the look out for it when you're on the lake.
2. If you're a member of a road association or lakeshore neighborhood group, adopt your shoreline and take the responsibility for checking it regularly for invasive milfoil. Call 207 512-5554 for more information.
3. Inspect your boat and trailer for plants before putting them in and after taking them out of any freshwater body of water.
4. Support our Courtesy Boat Inspectors.

5. Volunteer to net milfoil fragments at the work site in North Bay.

GREAT POND ACTION PLAN UPDATE

Working in Great Meadow Stream, New England Milfoil removed 4,000 gallons of milfoil last week and the BRCA team pulled out an additional 1,330 gallons. To date, 33,264 gallons have taken out this season. It's now estimated that 85% of the milfoil growing in Great Meadow Stream and North Bay has been removed.

The STOP MILFOIL Capital Campaign has received \$156,070 from 207 individual donors. More is needed to complete the work. Please contribute.

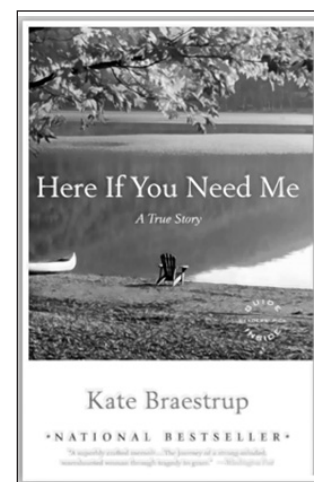
STOP MILFOIL PUBLIC MEETING – The next public milfoil meeting will be held on Tuesday, August 14th, 6:00 PM, at the Maine Lakes Resource Center in Belgrade Lakes Village. For more information, call 207 512-5554 or visit www.belgradelakesassociation.org.

Author Kate Braestrup To Speak in Belgrade Lakes

On Thursday, August 16 at 7 pm, Kate Braestrup, Chaplain to the Maine State Warden Service and national bestselling author, will be in Belgrade Lakes to discuss her work and her books.

What is it like consoling family members who have lost loved ones in tragic and often remote ways? How is it possible to offer human sympathy and a spiritual hand to bewildered and grieving strangers, many of whom are unchurched, on a bitter cold and dark winter night miles from anywhere? Why is it important to bring prayer to the front lines of search and rescue, of crime, of accidents and of death, not just to the victims and their friends and relatives but to the legions of law enforcement officials whose professional dedication and personal sacrifice is beyond measure?

Kate Braestrup has some of the answers. She has lived through her own shocking loss and internal search and rescue to be an apt mentor and a realistic example. She has suffered the shocking, sudden loss of her Maine State Trooper husband and has pulled through raising her four very young children, going to theology school,



pursuing her writing ambitions, re-marrying, and following a positive new direction in life.

Through her books, Kate Braestrup is a window on Maine, on a small town where people speak their grief and share their concern with a tsunami of food, where the

funeral for her husband requires the space of the school gym, where single motherhood is filled with fears and challenges and some very unexpected solutions including consoling a distraught young daughter with a new puppy, where....where life goes on and love does, too.

She also is a window on Maine's prestigious Game Wardens whose lives and lifestyles, whose ups and downs, and whose very male world are very important to her.

Finally, Kate Braestrup is a window on prayer:

Continued on page 20....

KOZY COTTAGE

One of a kind finds like grandma used to have! A unique mix of old and new. Always a great selection of Furniture glassware and so much more.

13 Church St., Oakland, ME

Wed-Fri 10-5, Sat 10-4

207-465-0959 • kozycove@yahoo.com

MICHONSKI BROTHERS MASONRY

Anything Brick, Block or Stone

Chimney Relining,

634-2516 www.michonskibrothers.com

Pete's Pig Southern Barbeque

Carryout & Catering

Upcoming Events

Taste of Waterville, Wed, August 1
Downtown Waterville, 5 - 9 pm

Bluegrass & Barbeque

Thurs, Aug 2, 5 - 8 pm
Stop by for delicious barbeque & great music featuring the Gawler Family & Friends
81 Main Street, Belgrade Lakes Village



207-495-4095 www.petespig.com



(207) 314-9538

Lakesmart Certified Contractor

- Patios, Walkways, Retaining Walls
- Permeable Pavers • Rain Gardens
- Buffer Plantings • Wildflower Fields



— Activities & Outings —

- AugustaFest: Saturday, August 11
- Fairfield Days Community Festival: Friday, August 10 through Sunday, August 12
- Readfield Heritage Days: Friday, August 10 through Sunday, August 12

This weekend, like all summer weekends in the region, there is somewhere special to go and something to do – something that is family-oriented, accentuates history and the downtown of a community, and is rich in food and music, children's activities and competitions.

Fairfield and Readfield are the three-dayers, the long weekends full of events and programs for all ages. Augusta is the new Fest on the block, the first-year, one-day (but very long day) schedule from 7 am to 9 pm.

Visit one or visit them all. Taste or feast. There were other fests last weekend, there will be more next weekend. It's the season of summer fests..



AugustaFest 2012 August 11

Events & Activities

7:00a - 4:00p	Fishing Tournament
8:00a - 10:00a	Breakfast @ Green St. Methodist
8:15a - 4:15p	Downtown Throwdown (Strongman Competition)
8:30a - 10:00a	Petanque Tournament (Mill Park)
9:00a - 4:00p	Antique Auto Show (Front Street)
10:00p - 4:00p	Animal Petting Area (Front Street)
10:00a - 4:00p	Vendors: Arts & Crafts (Water Street)
10:00a - 8:00p	Vendors: Food, Games & More! (Front Street)
12:00p - 5:00p	Dunk Tank (Front Street)
12:00p - 6:00p	Kids' Explore-a-Truck (Front Street)
12:00p - 8:00p	Bounce House (Front Street)
4:00p - 9:00p	Beer Garden (21+) (Front Street)

Live Music & Entertainment

11:00a - 1:00p	Al Corey Band (Market Square)
1:00p - 3:00p	Karate & Dancing Demos (Market Square)
11:15a - 12:15p	Plaid Dragonflies (Front Street Gazebo)
12:30p - 2:00p	Acoustic Chi (Front Street Gazebo)
2:30p - 4:00p	Archie (Front Street Gazebo)
4:30p - 6:00p	Carey Brown Band (Front Street Gazebo)
6:30p - 9:00p	Grand Hotel (Front Street Gazebo)

TheSource for all your home lending needs.



Todd LaPlante • Mortgage Loan Officer
NMLS#407682 • 621-4920 x 2315
tlaplante@mainestatecu.org

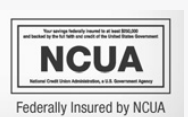


Heather Ryan • Senior Loan Officer
NMLS#407596 • 621-4920 x 2323
hryan@mainestatecu.org

For over 76 years we have provided Maine people with home lending services that feature great service and low rates. We offer a wide variety of mortgage options and we look forward to helping you find the best loan to meet your needs.

With our expanded membership eligibility, it's never been easier to join. Call us today.

- **FIXED RATE 15 & 30 YEAR MORTGAGES**
- **HOME EQUITY LOANS**
- **SECOND MORTGAGES**
- **REFINANCING**



200 Capitol Street, Augusta • 162 Hospital Street, Augusta • 81 Grove Street, Waterville



Notebook

Maine Farm Days 2012

• Did you know that nearly 13% of Maine's milk is produced in the town of Clinton? Join Maine Farm Days, a free two-day extravaganza, at the Misty Meadows Farm on Hill Road in Clinton on Wednesday and Thursday, August 22 and 23. See how nearly 5,000 gallons of milk is produced every day...and see all kinds of other farm activities. There will be a corn maze, a children's area with displays and animals, farm equipment displays, Maine Extension workshops, great food, and wagon tours of the farm. For details visit www.MaineFarmDays.com 622-7847 ext. 3.

Kennebec/Somerset County Soil & Water Conservation Districts

• The fall bulb sale 2012 is now in progress. Forms are available at www.kcswcd.org and orders must be received by August 16, if possible. August 29 is the absolute deadline. Bulbs will be available after October 12 at Cumberland Farms in Skowhegan and the Kennebec SWCD in Augusta. Payment must be received with the order. Mail to: Kennebec SWCD, 21 Enterprise Drive, Suite #1, Augusta, ME 04330. 622-7847

Belgrade Regional Conservation Alliance

• The Belgrade Regional Conservation Alliance Annual Meeting will be on Wednesday, September 5 at 5:15 pm at Alden Camps, Oakland. Reservations only, limited seating. 495-6039.

Volunteer Camp Counselors Needed

• Camp to Belong Maine at Camp Wigwam in Waterford is seeking volunteers to serve as camp counselors, August 11-19, to support the campers who are brothers and sisters separated by foster care. Camp Counselors must be: able to commit to the entire week including staff training and wrap-up; at least 18; able to pass a background check; willing to work as part of a team; open-minded, accepting and patient; physically able to navigate the Maine woods; willing to work with children and youth in the outdoors; able to initiate; able to follow directions. For more information visit wwcamptobelongmaine.org. To apply email heidi@camptobelong.org or call 899-7507

Augusta

• The Maine State Museum now has Sunday hours from 1-4 pm. The museum will continue with its regular hours, Tuesday through Friday, 9 am-5 pm and Saturday 10 am-4 pm. The current special exhibit is

"Malaga Island: Fragmented Lives." 287-2301

Belgrade

• Community Rec! The Belgrade Community Center for All Seasons will have open community swim from 12-5 pm, August 20-24, \$1 residents or \$2 non-residents per day. Children under 18 must be accompanied by an adult. There is a Morning Paddle at 7 am on August 14 and 8 am on August 21 and 28. The Gym will be unavailable between August 20 and September 3 while the floor is refinished. The facilities are available for rentals. 495-3481

Fayette

• The Fayette Historical Society will have an Open House from 10 am-2 pm at the Starling Grange Hall on Route 17 in Fayette. The public is invited to attend. 685-3655

Gardiner

• Genealogy & Local History Meet-up – last one of the summer! Join the Gardiner Public Library's Community Archives Room session on August 21, 5-7 pm, to learn how to trace family roots, do research, explore local history and use your own laptop or tablet. The library has four laptops available and can provide one-on-one assistance for ancestry.com and web searching strategies; call ahead to reserve, or bring your own. The Community Archives Room is also open Tuesday-Friday during most regular library hours. 582-6890, 582-3312

Hallowell

• The Gaslight Theater will be holding auditions for Agatha Christie's "Murder on the Nile" on Sunday, August 19 at 6 pm, Monday, August 20 at 6:30 pm, and Wednesday, August 22 at 6:30 pm, all at City Hall. Auditions are cold readings. Rehearsals will start after Labor Day weekend. Performances are November 9-11 and 16-18. There is a juicy plot with parts for women from 16 to 50, men from 25 to 60. The rehearsal schedule will be 2 days a week until the last 4 weeks. 626-3698

Rome

• The ongoing Kennebec Highlands History and Archaeology Project managed by the Belgrade Regional Conservation Alliance aims to shed light on the lives of the people who once lived here. This August, archaeologists will be leading the interested public in an exploration of two neighboring archaeological sites on the Rogers and Prescott land. John Rogers came to Rome in the late 1700s; his grandson John Rogers Prescott remained on the land in the 1870s. 495-6039

Smithfield

• Children's Story Time and Songs! Children (and parents/grandparents) are invited to join the Smithfield Library Children's Story Time and Songs on Fridays 9-10 am. Library hours are Wednesday 6-8 pm and Friday 9 am-noon. 362-5003

• On Tuesday, August 7, 6:30-8:30 pm the North Pond Association will hold a Lake Plant Identification Night with guest instructor Toni Pied, Milfoil Program Director and CBI Coordinator at the Belgrade Regional Conservation Alliance. Bring kids of all ages to roller skate at Sunbeam Roller rink – for free! while parents learn more about the plants in the lake next door at the Fairview Grange. This event is open to all –not necessary to be a member to participate. Residents of the North Pond communities – Rome, Mercer and Smithfield –are especially encouraged to attend. Participants will receive a GET ON BOARD ID card pack with pictures of invasives and the native plants they mimic. 474-8988

Winthrop

• The 25th Annual Winthrop Sidewalk Art Festival will be held rain or shine on Saturday, August 18, 10 am-4 pm in downtown. The event is known as one of the best art festivals in Maine. Other special activities will include a concert, children's activities, church bake sales and luncheons, the Farmers' Market, and the First Annual Family Barbecue & Gumbo Festival to End Hunger. 377-8020

The Harold: Improv with a Twist

with The Focus Group

August 16 at 7:30 p.m.

See Maine's premiere long-form improvisational group for one night only in Cumston Hall featuring the comedic talents of The Focus Group with TAM's own Dennis Price! Using detailed scene work, screwball characters, and outlandish relationships, The Focus Group crafts intricate improvisational shows from a single audience suggestion.

Comprised of actors, teachers, writers, and other "comedy" professionals this group will focus your energy on laughter and teach you the true meaning of "The Harold."

Recommended for mature audiences

KENNEBEC www.KennebecBoatRepair.com
BOAT REPAIR **465-9012**
907 OAKLAND ROAD
BELGRADE, MAINE 04917

COMPLETE BOAT SERVICE
GELCOAT REPAIR METAL FLAKE STORAGE
PAINTING DETAILING ENGINE REPAIR SHRINK WRAP

THE GELCOAT & FIBERGLASS HULL SPECIALIST

Barbara's Antiques & Collectibles Group Shoppe
Multi Dealer Shop Unique Variety of Antiques and Collectibles
3 Miles North of Skowhegan on Route 201
414 Lakewood Rd., Madison
Open Mon to Sat 10-5 Sun 12-4
474-2550

BELGRADE REGIONAL HEALTH CENTER

Providing quality care to the greater Belgrade area since 1977.

New Patients Welcome
Call us today!

4 Clement Way, Belgrade
Just 2 miles south of Belgrade
Lakes center on Rt. 27!
BelgradeCHC.org
(207) 495-3323

Amy Madden, MD

Tammy Gannaway Kerr, FNP

True love needs a true jeweler.

L. TARDIF JEWELER
62 Main Street Waterville, Me.

est. 1935

Tues - Sat 9 - 5



Calendar Directory

TOWN BY TOWN...

GREAT VISITS, AWESOME OUTINGS – INCLUDING ART, MUSIC, CULTURE, HISTORY, RECREATION, FARMERS' MARKETS, TRAILS, SCENIC SITES AND MORE...

AUGUSTA

- Arboretum, 6 miles of year round walking trails open dawn to dusk, Visitor Center open Mon-Fri 9 am-4 pm, Viles Arboretum, 626-7989, vilesarboretum.org, 153 Hospital St. *Capitol Complex, State Street*
- **Maine State House**, Hall of Flags, House and Senate Rooms, Klir Beck dioramas, Mon-Fri 8 am-5 pm, book tours at Maine State Museum, walk-ins welcome 9 am-1 pm, 287-2301, www.maine.gov
- **Art in the Capitol**, Maine Arts Commission monthly self-guided exhibits in State House hallways (Mon-Fri 8 am-5 pm), Blaine House (call for times), and Maine Arts Commission Office (8:30am-4:30 pm), 287-6746, mainearts.maine.gov
- **Governor's Mansion**, 1830 Blaine House, Tue-Thu 2-4 pm, 287-2121, www.blainehouse.org
- **Maine State Museum**, Tue-Fri 9 am-5 pm, Sat 10 am-4 pm, Sun. 1-4 pm, \$2 adults, \$1 ages 6-18, 287-2301, www.maine.state.museum.org
- **Maine State Library**, Mon-Sat opens 9 am, 287-5600, www.maine.gov/msl/

Other Museums

- **Children's Discovery Museum**, CDM, hands-on displays, actives, Tue-Thu 10 am-4 pm, Fri-Sat 10 am-5 pm, Sun 11 am-4 pm, admission, 622-2209, www.childrensdiscoverymuseum.org, 171 Capitol St.
- **Kennebec Historical Society**, Wed-Fri 10 am-2 pm, 622-7718, www.kennebechistorical.org, 107 Winthrop St.

University of Maine at Augusta, University Drive

- **Danforth Gallery**, Jewett Hall, art exhibits, UMA-1234, www.uma.edu
- **Holocaust and Human Rights Center of Maine**, Michael Klahr Center, Mon-Fri 8 am-4 pm, 621-3530, www.hhrc.uma.edu
- **UMA Fitness Trail**, 2 miles of wooded trails, near Civic Center

Riverfront/Downtown

- **Old Fort Western**, 1754 fort, house, store, 1-4 pm daily, admission \$6, 4-14 years \$4, 626-2385, www.oldfortwestern.org Cony St.
- **Riverfront Park**, boat launch, Greenway Trail, playground, eastside Kennebec River
- **Kennebec River Rail Trailhead**, Maine State Housing Authority parking lot, 623-8162, www.krrt.org, Water St.
- **Museum in the Streets**, walking/history tour, www.augustamaine.gov, downtown.
- **Farmers' Market at Mill Park**, Tues 2-6 pm, 626-2305, www.farmersmarketmillpark.org/, North Water St.

- **Farmers' Market at Turnpike Mall**, 549-5112, Wed and Sat 10 am-1 pm, Western Ave.

BELGRADE LAKES

- **Great Pond Mailboat**, 215-7520, Mon-Sat, 10 am, Post Office, Main St.
- **Spring Gallery & Sculpture Garden, Modern Art Foundry**, Thu-Sun 11 am-5 pm and by appointment, 495-3113, www.springgallerymaine.com, 81 Main St.
- **The Belgrade Community Center for All Seasons**, swimming, gym, playground, picnic area, rec programs, library, 495-3481, www.belgrademaine.com 1 Center Dr.
- **Union Church Coffee House**, check for schedule, 7:00 pm, \$5, 495-3599, www.unionchurchmaine.org, Main St.
- **Belgrade Historical Society**, monthly meetings, 465-7924
- **Farmers' Market**, Sun 8 am-1 pm, Thu 2-6 pm, 465-7058, www.belgradelakesfarmersmarket.org, Main St.
- **Peninsula Park on Long Pond**, picnic tables, Main St.
- **Maine Lakes Resource Center**, 512-5150, www.dockstodor-ways.com, 171 Main St.

FAIRFIELD

- **Fairfield Historical Society**, 1890 Cotton-Smith House, Tue 9 am-12 noon, 1-4 pm, 453-2998, www.fairfieldmehistoricalociety.net, 42 High St.
- **Farmers' Market**, 948-5724, Wed 2-6 pm, Sat 9:30 am-1:30 pm, Nazarene Church parking lot, 81 Main St.

FARMINGTON

- **Farmington Historical Society**, 778-2835, Wed and Sat, 11 am-2 pm, July-August, 118 Academy St.
- **Nordica Homestead Museum**, opera singer Lillian Nordica costumes, jewelry, mementos, 778-2042, Tue-Sat 10 am-12 n and 1-5 pm, Sun 1-5 pm, 116 Nordica Lane, Holley Rd.
- **Contra Dance**, 491-9928, www.starleft.org 2nd Sat of the month, all welcome, 6:30-7:30 pm family dance, 8-11 pm regular dance, admission, Grange Hall, Bridge St, Rt 43, West Farmington
- **University of Maine campus and Arboretum**, four walking tours with informal guide pamphlet to campus trees, 581-1541, www.umaine.edu/arboretum/, downtown
- **Farmers' Market**, 778-6602, Fri 9 am-2 pm, Better Living Center parking lot, Front St; Saturday 8 am-12 noon, Main St.
- **Meetinghouse Park and Gazebo**, weekly concerts throughout summer, downtown
- **Fairgrounds**, events throughout summer, Franklin County Fair in Sept, High St.

GARDINER

- **Artdogs and Circling the Square Fine Art Press**, 1-5 pm Fri, 10 am-4 pm Sat, 582-2108, 275-277, Water St.
- **Johnson Hall Performing Arts Center**, 582-7144, www.johnsonhall.org 280 Water St.
- **Farmers' Market**, 582-3100, www.gardinerfarmersmarket.org, Wed 2-6 pm, rain or shine, The Common
- **Kennebec River Rail Trail**, terminus near Gardiner/Randolph Bridge, 6.5 miles to Augusta o Waterfront Park, picnicking, events throughout summer, Kennebec River

- **The Center for Maine Craft**, 9 am-6 pm daily, 588-0021, www.maineecrafts.org, West Gardiner Service Plaza, Route 126 off Routes 95 and 295

GREENE

- **Araxine Wilkins Sawyer Memorial**, free monthly entertainment programs, 946-5311, www.sawyer-foundation.com, 371 Sawyer Rd, off Rt 202

HALLOWELL

- **Harlow Gallery, Kennebec Valley Art Association**, 622-3813, www.harlowgallery.org Wed, Thu, Sat, 12-6 pm, 160 Water St.
- **Gaslight Theater**, 626-3698, www.gaslighttheater.org City Hall, 1 Winthrop St.
- **Museum in the Streets**, history / walking tour, www.historichallowell.org, downtown
- **Farmers' Market**, 622-1350, Sun 11 am-3 pm, north end of Water St.
- **Vaughn Woods**, 166 acre park/trails, Middle St.
- **Kennebec River Rail Trail**, to Augusta, Farmingdale/Gardiner, downtown
- **Waterfront Park**, weekly summer concerts, North Water St.

HINCKLEY

- **L.C. Bates Museum at Good Will-Hinckley School**, early 20th century natural history and cultural exhibits, nature trails, adults \$3, up to 17 years \$1, 238-4250, www.gwh.org Wed-Sat 10 am-4:30 pm, Sun 1-4:30 pm, Rt 201

KINGFIELD

- **Reinhart Gallery Art Center**, 266-4656, 245 Main St, www.ianreinholdt.com/gallery.html
- **Ski Museum of Maine**, by appointment, 265-2023, 256 Main St, www.skimuseumofmaine.org
- **Stadler Gallery**, 265-5025, 12-4 pm daily or by appointment. 225 Main St, www.stadlergallery.com
- **Stanley Museum**, 265-2729, www.stanleymuseum.org, memorabilia / displays on Stanley Steamers, Tue-Sun 1-4 pm, 40 School St.

LIVERMORE

- **Washburn-Norlands Living History Center**, 18th-19th century mansion / farmstead / schoolhouse, library, chapel, 897-4366, www.norlands.org, admission, living history tours Tue and Thu 1-4 pm, 290 Norlands Rd.

MADISON

- **Lakewood Theater, Maine's Summer Theater, Young Performers Camp**, 474-7176, www.lakewoodtheater.org, Rt 201
- **Skowhegan School of Painting and Sculpture**, 474-9345, www.skowheganart.org, summer evening artists lecture series, East Madison Rd.

MONMOUTH

- **Monmouth Museum**, local and regional Maine history, Wed-Sun 1-4 pm, 933-2287, www.monmouthmuseuminc.org, 751 Main St.
- **The Theater At Monmouth**, The Shakespeare Theater of Maine, Cumston Hall, 933-9999, www.theateratmonmouth.org, Main St.

WATCHES • DIAMONDS
EXPERT WATCH REPAIR • STONESETTING • GOLDSMITHING

Larsen's Jewelry

SERVING YOU SINCE 1962

57 MAIN STREET
WATERVILLE, MAINE 04901

MARK A. LARSEN

207-872-6301
1-800-697-1874

HEATING CONTRACTOR

Jim Webster,

West Road, Belgrade, 495-2370, 462-3472

PAUL HANNA'S PLUMBING



207-495-3805

New Homes and Remodels ~ Camps
Water and Sewer Pumps ~ Water Filtration

Paul Hanna, Licensed Master Plumber

G & L CONTRACTING

New Construction, Additions, Renovations

Dock Installation and Construction
Specializing in Waterfront Properties Since 2004

Adam Gardner
agardner81@yahoo.com

207-495-2325



MOUNT VERNON

- **D.E.W Animal Kingdom**, Zoo, 293-2837, www.dewanimalkingdom.com, Tue-Sun 10 am-5 pm, \$10, 918 Pond Rd, Rt 41

NEW PORTLAND

- **Nowetah's American Indian Museum and Craft Shop**, 628-4981, daily 10 am-5 pm, free, 628-4981, 2 Colegrove Rd, Rt 27, www.nowetahs.webs.com/
- **Wire Bridge**, 1864, probably only wire suspension bridge in U.S., off Rt 27

NEW SHARON

- **Farmers' Market**, Sat 9 am-1 pm, Douin's Market, 491-9025, 150 Mercer Rd, Rt 2

NORRIDGEWOCK

- **Norridgewock Historical Society Museum**, 1838 building, Sat 10 am-3 pm, 634-5032, www.norridgewock.com, Mercer Rd, Rt 2
- **Oosoola Park**, picnic area, great playground, boat launch, on Kennebec River, Rt 8

OAKLAND

- **Farmers' Market**, Fri 2-6 pm, 465-3094, Pine Acres Parking Lot, 895 Kennedy Memorial Drive.
- **Macartney House Museum**, Oakland Area Historical Society, 465-7549, Wed 1:30-4:30 pm, 1815 home with antique furnishings and Oakland artifacts, 25 Main St.

READFIELD

- **Readfield Historical Society and Museum** in 1823 school-house, 685-4662, www.readfieldhistorical.org, Thu and Sat 10 am-2 pm or by appointment, Rt 17, Readfield Depot

ROME

- **Mt. Philip Grange**, suppers 3rd Sat of month, 4:30-6 pm, all you can eat beans, cornbread, rolls, chop suey, pies, Rts 135/225
- **Trails: Mount Philip** on Rt 225; **The Mountain** on Rt 27; French's Mountain and Kennebec Highlands, Watson Pond Rd; 495-6039, www.belgradelakes.org, maps available at BRCA, Belgrade Lakes

SIDNEY

- **New England Music Camp**, concerts free and open to the public, famous Bowl-in-the-Pines on Lake Messalonskee, 465-3025, www.nemusiccamp.com, Rt 23
- **Sidney Historical Society**, 547-3142, <http://www.rootsweb>
- **Silver Spur Riding Club**, horse shows, www.silverspur-maine.com/, River Rd/Rt 104

SKOWHEGAN

- **Margaret Chase Smith Library**, residence, home, museum exhibits, 474-7133, www.mcslibrary.org, free, Mon-Fri 10 am-4 pm. 54 Norridgewock Ave.
- **History House Museum**, 1800s local history and culture, 474-6632, www.skowhegan.com/historyhouse, Tue-Fri 1-5 pm, Elm St.
- **Fairgrounds**, weekly horse shows/competitions at covered arena, Skowhegan State Fair in Aug, 474-3621, Madison

Ave.

- **Farmers' Market**, Wed 3-6 pm, Sat 9 am-1 pm, weekly entertainment, 938-3906, SSomerset Gristmill parking lot, downtown

SMITHFIELD

- **Fairview Grange** suppers, 362-2791, every Wed in summer, 5 pm, Village Rd, Rt 8
- **Sunbeam Roller Rink**, Wed, Fri, Sat 7-10 pm, 362-4951, 830 Village Rd, Rt 8
- **Sunset Camps**, public beach, 362-2611, www.sunsetcamps.com, Village Rd, Rt 8

UNITY

- **Unity College Centre for the Performing Arts**, folk genre music, 568-3147, www.unitymaine.org, 42 Depot St.

WATERVILLE

- **Aqua City Actor's Theatre (ACAT)**, 873-7000, www.acattheatre.org. Waterville Opera House Studio Theater, Main St.
- **Common Street Arts**, Wed-Sat 12-6 pm, 16 Common St.
- **Museum in the Streets**, downtown history/walking tour, www.the museum in the streets.com/waterville.htm
- **Two Cent Bridge**, historic foot bridge over Kennebec River, Head of Falls park/events area, Front St.
- **Colby College Museum of Art**, 859-5600, www.colby.edu/museum/ Tues-Sat 10 am-4:30 pm, Sun 12-4:30 pm, free, Colby College Campus, Mayflower Hill
- **Colby College Special Collections**, Miller Library, Mon-Fri 10 am-12 noon and 1-4 pm, free, current exhibit "The Power of Myth and Legend: The Irish Literary Revival," Colby College Campus, Mayflower Hill.
- **Thomas College Art Gallery**, 180 West River Rd.
- **Waterville Historical Society Redington Museum**, 1814 home, pharmacy, 872-9439, www.redingtonmuseum.org. Tue-Sat tours at 10 and 11 am, 1 and 2 pm, 62 Silver St.
- **Waterville Opera House**, 873-7000, www.operahouse.com, 93 Main St.
- **Farmers' Market**, Thu 2-6 pm, 680-2055, www.waterville-farmersmarket.org, The Concourse parking lot.

WAYNE

- **Farmers' Market**, 873-7000, <http://waynefarmersmarket.weekly.com>, Sat 9 am-noon, Town Green, next to Post Office, Main St.

WILTON

- **Wilton Farm & Home Museum**, 645-2091, 645-4578, www.wiltonmaine.org, Sat 1-4 pm or by appointment, Canal St.

WINTHROP

- **Norcross Park**, playground, picnic site, boat launch on Maranacook Lake, downtown.
- **Farmers' Market**, 395-4244, www.camarkets.com, Tue and Sat 9 am-1 pm, parking lot, downtown,

Additions/Updates/Corrections: Please contact Summertime in the Belgrades with any changes to this Directory.

ASSOCIATIONS/GROUPS

THE BELGRADES...

- **East Pond Association**, Smithfield/Oakland, www.eastpond.org
- **North Pond Association**, Smithfield/Rome, 152 Madison Avenue, Skowhegan, ME 04976, 474-8988, www.northpond.net
- **McGrath Pond/Salmon Lake Association (MP/SL)**, Belgrade/Oakland, RR 2, Box 2800, Belgrade, 04917, 465-3983, www.salmonlake.org
- **Great/Long Ponds: Belgrade Lakes Association (BLA)**, Belgrade/Rome/Mount Vernon, PO Box 551, 137 Main Street, Belgrade Lakes, 04918, 512-5150, www.belgradelake-sassociation.com
- **Friends of Messalonskee Lake Watershed**, Oakland/Belgrade/Sidney, PO Box 532, Oakland, 04963, 465-2888, www.snowpond.org
- **Belgrade Regional Conservation Alliance and BRCA Conservation Corps**, PO Box 250, 137 Main Street, Belgrade Lakes, 04918, 495-6039, www.belgradelakes.org
- **Belgrade Lakes Region Business Group (BLRBG)**, PO Box 596, Belgrade Lakes, 04918, 495-3700, www.belgrade-lakesmaine.com
- **Maine Lakes Resource Center**, PO Box 431, 137 Main Street, Belgrade Lakes, 04918, 495-3617, 620-6029, www.mainelakesresourcecenter.org.

BEYOND...

- **Maine Congress of Lake Associations (COLA)**, PO Box 426, 137 Main Street, Belgrade, 04917, 1-855-463-2652, www.mainecola.org
- **Friends of the Cobbossee Watershed**, PO Box 5003, Augusta, 04332-5003, 621-4100, www.watershedfriends.com
- **Franklin County Soil & Water Conservation District**, 107 Park St, Farmington, 04938, 778-4279, www.franklin-cswcd.org
- **Kennebec County Soil & Water Conservation District**, Central Maine Commerce Center, 21 Enterprise Dr, Augusta, 04330, 622-7847, ext. 3, www.kcswcd.org
- **Kennebec Land Trust (KLT)**, PO Box 261, 134 Main St, Winthrop, 04364, 377-2848, www.tklt.org
- **Kennebec Messalonskee Trails**, PO Box 2388, Waterville, 04903, 873-6443, www.KMTrails.org
- **Kennebec River Rail Trail**, PO Box 2195, Augusta, 04338, 623-8162, www.krrt.org
- **30 Mile River Watershed Association (30 MRWA)**, Kimball Pond in Vienna to the Androscoggin River, 293-2181, www.30mileriver.org
- **Parker Pond Association**, Mount Vernon/Vienna. www.parkerpond.org
- **Central Maine chapter of the New England Mountain Bike Association (CeMeNEMBA)**, 1154 West Rd, Belgrade 04917, 441-6227, www.cemenemba.org

RIZZO MATTSON,
REALTORS®
COLDWELL BANKER
622-9000
Toll free
1-800-894-7979
www.rizzomattson.com
www.coldwellbanker.com

**J & M Logging, Inc.**
622-6353
Cut to order
in lengths from 14" to 23"
Firewood
Green Certified Wood, Seasoned, & Ash
Cut, Split & Delivered
853 Civic Center Drive, Augusta, ME 04330

**DARE TO COMPARE**
Best Prices on Inside,
Outside Boat Storage,
Shrinkwrapping &
Winterization
FREE LAKESIDE BOAT
PICKUP & DELIVERY

Craig Pooler
Cell 207-314-3287 • Office 207-495-3421
Email: cpooler1@myfairpoint.net
www.BelgradeBoatStorage.com



— Calendar —

Thursday 8/9 through Saturday 8/18 - Skowhegan State Fair, midway, harness racing, exhibits, livestock, 4-H Display, nightly entertainment, food, fun, more, Monday 8/15 is Senior Citizen Day, www.skowheganstatefair.com, Fairgrounds, Route 201, Skowhegan.

Thursday 8/9 through Sunday 8/19 - Tent Sale, shoes, sports apparel, 474-6231, New Balance Factory Store, 12 Walnut Street, Skowhegan.

Wednesday 8/8 through Saturday 8/11 - "The Music Man," 474-7176, Lakewood Theater, Route 201, Madison.

Friday 8/10 and Saturday 8/11 - 3rd Annual Saddleback Mountain Bluegrass Festival, includes top bands in bluegrass music, food venues, beer garden, free parking, camping on a first come first serve basis beginning at 9 am Friday, festival starts 3 pm Friday, 11 am Saturday, tickets for 2 days \$45 at gate, www.saddlebackmaine.com, 864-5671, Saddleback Mountain, 976 Saddleback Mountain Road, Rangeley.

Friday 8/10 through Sunday 8/12 - Readfield Heritage Days, food, entertainment, fireworks, parade, sales, Union Meeting House Open House, book sale, games and activities, and much more, 685-5318 or 631-1852, Town Beach and downtown Readfield.

Friday 8/10 through Sunday 8/12 - Fairfield Days Community Festival, Blueberry Pancake Breakfast, pie baking contest, Senior Citizens' BBQ, Open House at the Fairfield History House, Concerts in the Park, games for children. Saturday evening dance, and more, 441-2048, downtown Fairfield.

Friday 8/10 - Children's Story Time and Songs, 9-10 am, 362-5003, Smithfield Library, Route 8, Smithfield.

Friday 8/10 - Fly-tying and Casting Workshop with Trout Unlimited, limited to 12 participants, preregistration required, 1-4 pm, 495-6039, Belgrade Regional Conservation Alliance, Main Street, Belgrade Lakes.

Friday 8/10 - "Capt. Mac," The life of Arctic

Explorer, Donald Baxter Macmillan, narrated by author, Mary Morton Cowan, with accompanying slides, this presentation brings to life the bitter hardships faced by the early Arctic explorers; Capt. Mac accompanied Admiral Peary in 1908 on an expedition to the North Pole and five years later organized his own expedition to Greenland, 2 and 7 pm, 946-5311. Araxine Wilkins Sawyer Memorial, Sawyer Road, off Route 202, Greene.

Friday 8/10 - Artwalk Gardiner, to promote Kennebec Valley art, open studios and shops, restaurants will be open, meet the artists, refreshments available at many exhibits, 5:30-8:30 pm, www.theartdogs.com, 582-6600, Historic District, Water Street, downtown Gardiner.

Friday 8/10 - The Gawler Family concert, to benefit the Belgrade Public Library, 7 pm, 495-2101, Belgrade Community Center for All Seasons, Route 27, Belgrade Lakes.

Friday 8/10 - Earl Smith, author of "The Dam Committee," book discussion, 7 pm, 495-3617, Maine Lakes Resource Center, Main Street, Belgrade Lakes.

Friday 8/10 - "The Glass Menagerie," by Tennessee Williams, 7:30 pm, 933-9999, Cumston Hall, The Theater At Monmouth.

Friday 8/10 - New England Music Camp Student Recital, open to the public, free of charge, everyone welcome, 7:30 pm, 465-3025, Alumni Hall, NEMC Camp, Route 23, Sidney.

Saturday 8/11 - Annual Paddle Trek sponsored by the 30 Mile River Watershed, canoeists and kayakers may join all or parts of this 15-mile paddle from Mt. Vernon Village to Wayne Village, begins 7 am, ends in Wayne Village around 3 pm, other starting points available, free, pre-registration required, space limited, www.30mileriver.org, paddle@30mileriver.org, 754-5197, begins at Minnehonk Lake public beach, downtown Mount Vernon.

Saturday 8/11 - AugustaFest 2012, fishing tournament, antique auto show, petting area, arts & crafts, vendors dunk tank, bounce house, beer garden, live music and entertainment, competitions, and more, 7 am-9 pm, Mill Park, Front Street, Water Street, downtown Augusta.

Saturday 8/11 - Merrymeeting Connector Ride,

30-35 mile Road Biking, outwood@roadrunner.com, 9 am, Gardiner Waterfront Park, Gardiner.

Saturday 8/11 - Free Electronic Waste Collection for individuals, businesses will be charged a fee, 9 am-2 pm, 377-2083, Winthrop Elementary School Parking Lot, Highland Avenue, Winthrop.

Saturday 8/11 - Bike Hike, sponsored by the Belgrade Regional Conservation Alliance, for advanced beginners to intermediate riders, 9:30 am, meet at Roxy Rand Road, Route 27, Rome.

Saturday 8/11 - Team Hollowell Car Wash & Bake Sale, Team Hollowell and Friends fundraiser for the Dempsey Foundation, a day for Scrubs (car washes) and Grubs (yummy bake sale goodies), support this cause in the fight against cancer, 10 am-2 pm, 465-3344, Belgrade Lakes Fire Station, Route 27, Belgrade Lakes.

Saturday 8/11 - 3rd Annual Ricky Gibson Football Scholarship Fund Car & Motorcycle Show, 10 am-2 pm, 242-7142, Maranacook Community School, Readfield.

Saturday 8/11 - "Bugs! Bugs! Bugs!" Children's Workshop, 10 am, \$1, 238-4250, L.C. Bates Museum, Route 201, Hinckley.

Saturday 8/11 - "Tartuffe," by Moliere, 1 pm, 933-9999, Cumston Hall, The Theater At Monmouth.

Saturday 8/11 - "Fossils Discovered," what is the Maine State Fossil? Explore this question and the dinosaur collections, trilobites and mammoth teeth for an hour of fossil fun! Bring home a fossil you make out of clay, 1 pm, 238-4250, L.C. Bates Museum, Route 201, Hinckley.

Saturday 8/11 - Pianist Lan Lam and violinist Geoffrey Day concert, to benefit the "Concerts at Jewett" Series sponsored by the College of Arts and Sciences and UMA Senior College, 2 pm, 621-3551, Jewett Auditorium, University of Maine, Augusta.

Saturday 8/11 - "The Frog Prince," Missoula Children's Theatre Camp production starring local students, original, 873-7000, 3 pm, Waterville Opera House, Main Street, Waterville.

Saturday 8/11 - New England Music Camp Student Concert at "Bowl in the Pines," open to the public, free of charge, everyone welcome, 3 pm, 465-3025, NEMC Camp, Route 23, Sidney.

Saturday 8/11 - Contradance and Grange Supper; supper 5-7 pm, \$7 adults! Family Dance with sit-in band, 6:30-7:30 pm, \$2 adult/\$1 child; Pot Luck Snacks, 7:30-8:30 pm; Regular Contra with Multiple Callers and the Rogers Brothers, 8-10:30 pm, \$6 adults/\$5 students or \$15 family max, all dances taught, beginners are welcome, no partner necessary, 491-9928, Farmington Grange, Bridge Street, West Farmington.

Saturday 8/11 - First Annual Reggae Fest Jamaican Style, food, music, drink, \$25 per person, advance purchase only, 21+ positive ID required, 5 pm 'til close, 622-2479, Lakeside Orchards, Route 17, Manchester.

Saturday 8/11 - Martin Swinger, Union Coffeehouse, followed by Open Mic Hour, 7 pm, \$5 donation at door, refreshments, Union Church, Route 27, downtown Belgrade Lakes.

Saturday 8/11 - "Henry IV," by William Shakespeare, 7:30 pm, 933-9999, Cumston Hall, The Theater At Monmouth.

Sunday 8/12 - Sue Gawler Flower Show, all entries are welcome, submit bouquets 8-10 am, judging 10 am-12 pm, public viewing 12-5 pm, Belgrade Lakes Farmers' Market, Main Street, Belgrade Lakes.

Sunday 8/12 - Gypsy Jazz Festival, featuring Ameranouche, Hot Club du Monde, Mes Amis, Jack Seref Quartet, and Gypsy Caravan, food and beverages available for sale throughout the day at the festival location and the Market, tickets \$25, advance sales only, non-refundable, reserve at 465-4439, bring your own lawn chair, no dogs, 12 noon 'til dusk, festival on the grounds behind the restaurant overlooking Messalonskee Stream, Riverside Farm Market, 291 Fairfield Street, Oakland.

Sunday 8/12 - "Historic Vaughan Woods," walking tour with a trained naturalist, sponsored by Vaughan Homestead Foundation, 1 pm, 2 Litchfield Road, Hollowell.

MAINE-ly ELDER CARE

"Caring for the ones who cared for us"



In - Home Nursing • Personal Care Services • Homemakers
• Emergency Response Systems • Transportation Services

STATE REGISTERED PERSONAL CARE
AND HOMEMAKER AGENCY

465-3249

28 Center St., Oakland, Me 04963

www.Maine-lyElderCare.com

denise@Maine-lyElderCare.com

DAY'S REAL ESTATE

"The Waterfront Specialists" 207-495-3111

262 Augusta Road (Route 27) • Belgrade Lakes, Maine 04918 • 888-495-3111

Web: www.daysrealestate.com • e-mail: daysrealestate@roadrunner.com



MOSHER POND~ Private setting with 1700' +/- shorefront and 15+ acres, a sportsman's dream. Electricity and driveway already in place. Enjoy great hunting and fishing. \$74,900 (1049342)



WATSON POND ACCESS~ Duplex with two one-BR + loft units in quiet wooded setting. Owner's unit has been completely remodeled. Easy commute to Waterville, Augusta & Farmington. \$129,900 (987302)



BELGRADE STREAM ~ 4.1 acres on the mainland with 338' +/- on the stream and also includes an island with 912' +/- frontage. Access to Snow Pond by small boat only. \$22,000 (962466)



Sunday 8/12 - Penobscot Basketry Workshop with B. Francis, sponsored by the Belgrade Regional Conservation Alliance, spaces limited to 12 participants, pre-registration required, 1 pm, 495-6039, Main Street, Belgrade Lakes.

Sunday 8/12 - KPAC Jazz Band, conducted by Mr. Charles Milazzo, free of charge, family-oriented atmosphere, handicapped accessible, toilet facilities, 2-4 pm, 620-6231, Norcross Point, Maranacook Lake, off Bowdoin Street, Winthrop.

Sunday 8/12 - "The Little Prince," by Antoine de Saint-Exupery, 1 pm, 933-9999, Cumston Hall, The Theater At Monmouth.

Sunday 8/12 - New England Music Camp Student concert at "Bowl in the Pines," rain or shine, free to the public, everyone welcome, 3 pm, 465-3025, NEMC Camp, Route 23, Sidney.

Sunday 8/12 - Coburn Park Concert, 5 pm, free, refreshments for sale on premises, 474-6894, Philbrick Gazebo, Coburn Park, Water Street, Skowhegan.

Sunday 8/12 - "Two Gentlemen of Verona," by William Shakespeare, 7 pm, post show discussion series with the cast and crew, 933-9999, Cumston Hall, The Theater At Monmouth.

Monday 8/13 - Old Crow Band, 7-9:30 pm, bandstand, Meetinghouse Square, Route 27, downtown Farmington.

Tuesday 8/14 - "Seminole Wind," Music on Main, free concert, weather permitting, 11:30 am-1 pm, 778-3424, Band Stand, Meetinghouse Square, downtown Farmington.

Tuesday 8/14 - "Tartuffe," by Moliere, 1 pm, 933-9999, Cumston Hall, The Theater At Monmouth.

Tuesday 8/14 - "Calypso Soldiers," Rock on the River Concert, free, 7-8:30 pm, Boardwalk on the Kennebec River, Water Street, Hallowell.

Tuesday 8/14 - "Two Gentlemen of Verona," by William Shakespeare, 7:30 pm, 933-9999, Cumston Hall, The Theater At Monmouth.

Wednesday 8/15 - Dale Robin Goodman, American Folk songs and stories from a variety of ethnic, geographic and thematic genres played on guitar, banjo, Appalachian dulcimer,

acoustic bass guitar and spoons, Lively Lunches at Johnson Hall Mini-Park series, bring a bag lunch or order from a local restaurant, snacks and sweets on sale, no admission, everyone welcome, noon-1 pm, 582-7144, Johnson Hall Mini-Park, rain place inside Johnson Hall, 280 Water Street, Gardiner.

Wednesday 8/15 - Hallowell Cemetery Tour, with Sam Webber, narration on notable Hallowell citizens and veterans from the American Revolution and the Civil War, 1 pm, Hallowell Cemetery, north end of Hallowell.

Wednesday 8/15 - "The Glass Menagerie" by Tennessee Williams, 1 pm, 933-9999, The Theater at Monmouth.

Wednesday 8/15 - Capture Wild Animals on Paper with pen and many other mediums, Summer Art Program for Children, 1 pm, \$2 per participant, all supplies provided, 238-4250, L.C. Bates Museum, Route 201, Hinckley.

Wednesday 8/15 - Friends of the Cobbossee Watershed 10th Annual Cocktail Party and Auction, open bar, catered hors d'oeuvres, musical entertainment, boat rides in the OTTER II, 5:30-7:30 pm, \$75 per person, 100% of all contributions go to programs and projects of the Friends, 621-4100, Blouin home, Lake Cobbosseecontee, Winthrop.

Wednesday 8/15 - "Loon Research in Our Backyard," lecture by Michael Chickering, Biodiversity Research Institute, 7 pm, 495-6039, Belgrade Regional Conservation Alliance, Main Street, Belgrade Lakes.

Wednesday 8/15 - "Tartuffe," by Moliere, 7:30 pm, 933-9999, Cumston Hall, The Theater at Monmouth.

Thursday 8/16 through Sunday 8/19 - "Murdered to Death," by Agatha Christie, 474-7176, Lakewood Theater, Route 201, Madison.

Thursday 8/16 - "The Little Prince," by Antoine de Saint-Exupery, 1 pm, 933-9999, Cumston Hall, The Theater At Monmouth.

Thursday 8/16 - Summer History Program, discover the early 1900s in Maine, imagine and explore the past, try on clothes, do chores, wash clothes in a tub, experience old time school, and play with old fashioned toys, 1 pm, 238-4250, L.C. Bates Museum, Route 201,

Hinckley.

Thursday 8/16 - Billy Libby w/Band, Summer Concert Series, 6:30 pm, 626-2415, on the lawn, Lithgow Public Library, Winthrop Street, Augusta.

Thursday 8/16 - Western Maine Storytelling Guild monthly meeting, all types of stories welcome, personal or fanciful, real or imagined, membership is free, be a teller or a listener, 7-8:30 pm, 778-4662, Olsen Student Center, Room 123, University of Maine, Farmington.

Thursday 8/16 - "The Impact of the War of 1812 on Belgrade," sponsored by Belgrade Historical Society, also discussion on the Belgrade Town

House, 7 pm, Belgrade Community Center for All Seasons, Route 27, Belgrade Lakes.

Thursday 8/16 - Kate Braestrup, author of National Bestseller "Here If You Need Me," discussion of her years as Chaplin to the Maine State Warden's Service, 7 pm, 495-3617, Maine Lakes Resource Center, Main Street, Belgrade Lakes.

Thursday 8/16 - "The Harold: Improv with a Twist," Maine's premiere long-form improvisational group featuring the comedic talents of The Focus Group, 7:30 pm, 933-9999, Cumston Hall, The Theater At Monmouth.



Maine Lakes Resource Center

Making Conservation a Tradition

Weekend of Art

Robert Dale
Collection of lamps
made out of antique
materials

Jane Burke
Mural Projects

Fredda Merzon
Botanically inspired
sculptures from
found metal objects

August 11 & 12
9 am to 3 pm

Maine Lakes Resource Center
137 Main St., Belgrade Lakes

The mission of the Maine Lakes Resource Center is "to get property owners to adopt best conservation practices." The MLRC does this by promoting, and providing resources for, the relevant programs of our conservation partners, educating students and by building a community-wide commitment to conservation. Community and student groups are encouraged to make use of the Resource Center.

www.mainelakesresourcecenter.org

Presented by Modern Art Foundry

SPRING
GALLERY
& SCULPTURE
GARDEN

Bronze Sculpture Exhibit

Belgrade Lakes Village
Thursday-Sunday until Labor Day
11-5 and by appt
207-495-3113

www.modernartfoundry.com
81 Main St., Rte.27

When you leave
your vacation
home, please
leave your
unopened,
unexpired
foodstuffs for
the Food Pantry!

Drop Off
Locations:

- Belgrade Post Office
- Belgrade Lakes Post Office
- Belgrade Community Center
for All Seasons
- Belgrade Town Office

Theater at Monmouth

JUNE 23 - AUGUST 19

Tartuffe

translated by
Richard Wilbur from Molière

The Glass Menagerie

by Tennessee Williams

Two Gentlemen of Verona

by William Shakespeare

Henry IV, Part I

by William Shakespeare

The Little Prince

by Rick Cummins & John Scoullar

207.933.9999 | theateratmonmouth.org



The 1830 House on Long Pond

Country Store,
Handmade Gifts,
Custom Home and Camp Signs
A New Belgrade Lakes Coloring Book
Featuring images circa 1830 \$5.95

Rhonda Barnes Adlam

495-3277

134 Main Street, Belgrade Lakes Village

— Kennebec Corridor News & Notes —

Artwalk Gardiner – Celebrating Summer with the Visual Arts in Historic Downtown Gardiner



On Friday, August 10th from 5:30-9:00pm, over two dozen area artists will once again showcase their work in storefronts and studios up and down Water Street in Gardiner's historic downtown. This lively celebration of art and community is free and open to the public, and is the second of three Artwalks that are taking place this year.

Now in its eighth consecutive year, Artwalk Gardiner was first launched in 2005 by the artists of Artdogs* studios and a few other area artists. Comprised of a non-juried group of artists who live and/or work within a twenty-mile radius of downtown Gardiner, the mission of Artwalk Gardiner is to increase community awareness and appreciation of the visual arts, and to encourage interaction with local artists and the public by providing artists with a supportive network that fosters the creative economy. Since its inception, Artwalk Gardiner has drawn hundreds of appreciative visitors to Water Street to enjoy these festive evenings of great art and good cheer with area artists.

The August 10th Artwalk will feature work by artists Karen Adrienne, Nancy Barron, John Carnes, Matt Demers, Kala Ladenheim, Robert Lash, Peggy Cope Mascher, Allison Mckeen, Scott Minzy, Emily Naples, Donna Parkinson, Ellen Roberts, Tanya Russell, Robert Saunders, Judith Schuppien, Cecille Sirois, Jennifer Strode, Lori Watts, Barbra Whitten, Diana Willette, and Tina Wood. Hundreds of original works of art (including paintings, drawings, photographs, fine art prints, sculptures, and artist's books) will be avail-

able to view and purchase, along with many fine crafts such as pottery, jewelry, woodcarvings, and textiles. Monktree will feature an exhibit by Ruthanne Harrison entitled "Diving Through Layers: A Progression," and the members of Circling the Square Fine Art Press will be showcasing a selection of fine art prints. Business sponsors and host venues for the evening include The Girltrent Shop, Lisa's Legit Burritos, SaraSara's, and Water Street Café. Free refreshments at many of the venues and live music at the Colab (Collaborative Community Space) by the Sweet Love house band will add to the fun!

For additional information about Artwalk Gardiner*, please contact Karen Adrienne at 207.582.6600.



Artwalk Gardiner
Friday August 10
5:30 - 9:00pm

Boat – Automobile – RV Enclosed Storage

Winter Storage for Summer Vehicles

Reasonable Rates! Boats stored on your trailer!
Real Protection from Winter Storms and Sun Damage
Pontoon Boats and Large RV's – **No Problem!**

www.belgradelakesmarine.com



New customers reserve now – limited openings available.

Belgrade Lakes Marine & Storage, Inc.

366 Augusta Road (Route 27) Belgrade **207-495-2378**

— COMPLETE — Denture Center

FREE CONSULTATIONS Call for Appointment Today!
Full Dentures • Partial Dentures • Same Day Repairs/Relines • Lab on Premises

PAUL LALICATA, L.D.

107 Bridge St., West Farmington
Call 860-2781

Email: completedenturecenter@gmail.com

MOST INSURANCES/MAINE CARE
ACCEPTED



ST. MICHAEL SCHOOL Augusta

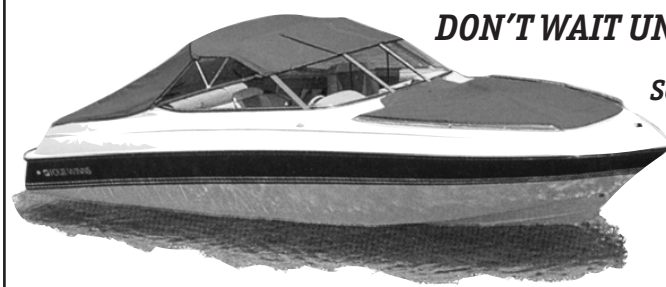
WE OFFER:

- Maine State Certified faculty and staff
- Music, Chorus, Art and Physical Education
- Title I Reading; Speech services
- Full day Kindergarten and full day Pre-K
- Excellent lunch and extended day program
- Study of French for Grades PK-8
- Intramural sports and healthy activities
- A strong athletic program
- Science Fairs and environmental projects
- Children's Stage Adventure
- Adventure Club for Grades 6-8
- Community service projects
- Civic Oration, Math teams, DAR Essay contest, Spelling and Geography Bees, more.

Currently Accepting Enrollments for Pre-K Through Grade 8

For information, call the Office at 623-3401. Visit our website at www.smsmaine.org. St. Michael School provides a competitive, affordable, high quality education. We welcome both Catholic and non-Catholic students.

Where Futures Begin



DON'T WAIT UNTIL NEXT SPRING!

Schedule boat top, cover and seat repair work for the OFF SEASON. Some items can be left with us all winter for SPRING DELIVERY!

Call Now for more information

Repairs & Alterations Welcome!

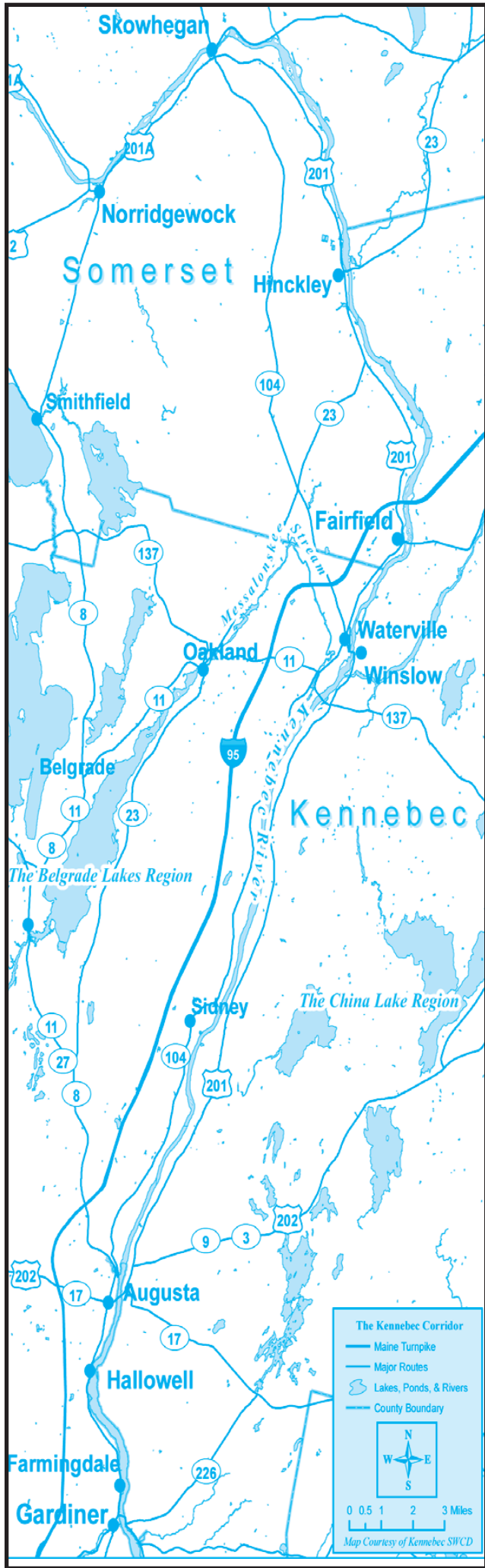
ATTENTION BOAT OWNERS
Tops, Covers & Interiors for Boats

WATERVILLE UPHOLSTERY & CANVAS
(Waterville Auto Top)



1-1/2 Miles West, Exit 127, I-95,
Kennedy Memorial Drive, Oakland • 465 – 7847





Contact Summertime with ads and event information.
207-495-3777 • ebelnews@earthlink.net
www.sumbelnews.com



For Sale by Owner

East Mount Vernon-1820 Classic Cape with attached woodshed and barn, 23 acres of land. Privacy on both sides of the road. Located among eight lakes and short distance to Belgrade stream. Three Bedrooms, large sunny country kitchen, two decks, plenty of room for organic gardens and farm animals. Large well maintained post and beam barn. Energy efficient, updated systems \$280,000 Call: 207- 512-5102.

—Katy's Column—

Ardent Spirits – An Amazing Book

When Gerald Mahoney was a member of the Board at Hubbard Free Library in Hallowell he became aware of the many invaluable documents from the early 1800s up to today that were stashed away in that historic granite building. As a result he gained permission to study a collection of writings done by teenaged boys who had organized the “Franklin Debating Society.” Mahoney was so impressed with the collection he created a book that contains the thoughts of those young Hallowell residents. If each young boy today were required to read the works of boys their age 200 years ago, I dare say they would be astounded.

The Maine Folklore Center at the University of Maine in Orono reviewed the book. A small collection of papers at the Hallowell Hubbard Free Library was written by 16-17 year old young men who were already employed at a local print shop that published The Hallowell Gazette. The Society was started by these young men and chose Benjamin Franklin as their inspiration because he had also been an apprentice printer at one time and had also founded a similar group called the Junto.

If each young boy today were required to read the works of boys their age 200 years ago, I dare say they would be astounded.

At each meeting the boys wrote short essays, both pros and cons, of such issues as racism, slavery, temperance, status of women, term limits, and political parties. In addition they discussed each subject when they met. But most important is that the written comments have remained in the library since they were penned.

The thoughts of young people from the past are treasures to be enjoyed by those of today. When you consider that statement, consider how many other treasures may be available in historic library and home attics that we know nothing about.

“Ardent Spirits, the Franklin Debating Society: A Social History of Hallowell, Maine in the early 19th Century” reveals much about this 250-year-old city, the way of life and, surely, the ‘ardent’ spirits of young men in that era.

Katy Perry is an author, and news commentator who knows, loves, and respects Maine.

The Artisan's Barn



163 North Road
Readfield, Maine 04355
207-685-9787
www.theartisansbarn.com

Thurs/Fri 11 to 5 PM
Sat 10 AM to 4 PM
Open May–December

Just here for
the summer,
or new to the area?
Looking for a vet?
Maybe we can help



Lakeside
VETERINARY
CLINIC

www.lakevets.com

Hours 7:30 to 5:00
Monday thru Friday
8:00 to 12:00 Saturday

Dr. Eleanor C. Sabeau

88 Libby Hill Rd • Oakland, Maine 04963

(207) 465-PETS (7387) (207) 465-VETS (8387)

Call or visit us
at the head of
Snow Pond in
Oakland (Rt. 23)!

LakeHouse™

Design • Build
Renovations



Traditional Style Camps,
Cottages and Lakefront Homes
207.242.3663

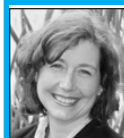
www.lakehousedesignbuild.com

- Hanging Baskets
- Specialty Annuals
- Perennials & Roses
- Shrubs & Trees
- Garden Tools & Accessories
- Soil Amendments
- Pottery
- Statuary & Fountains
- Gifts

Longfellow's
Greenhouses

Open 7 Days a Week
81 Puddledock Rd
Manchester
622-5965
www.longfellowgreenhouses.com

Your First Choice In Window Treatments



Lori Larochelle
215-7872
lori@blindtime.com

Your local independent, Shop At Home, Window Treatment Service! Invite one of our experienced design consultants to your home or office to assist you on your next project. We'll help you make the right choice for your budget and install them too!



Joyce Schoenthaler
441-1837
joyce@blindtime.com

Specials through June 30

Free “Top Down - Bottom Up” option on Comfortex Shades
25% OFF ALL WOOD, FAUX, AND ALUMINUM
BLINDS INCLUDING 1”, 2” & 2.5”



Visit us at
www.blindtime.com
621-9832
jerry@blindtime.com





Lynch

LANDSCAPING INC.
FOR THOSE WHO DESIRE QUALITY

207-474-2420

Design - Install - Maintain

Designing landscapes to beautify your property and protect your natural resource - Installing landscapes in a manner that promotes sustainability and prevents erosion - Maintaining landscapes so your investment lasts a lifetime



Licensed, Certified & Accredited
For All Your Landscaping Needs

www.lynchlandscaping.com



Belgrade Vacation Rentals

CAMP & COTTAGE RENTALS
We've moved to Belgrade Lakes!

Contact Us Today! **(207) 495-4011**
www.BelgradeVacationRentals.com

Own A Property? We Will Rent it for You!

Showing the Best of World and American Cinema

Call our 24-hour movie hot-line or check our website for film titles and times



Waterville ★ 873-6526
www.RailroadSquareCinema.com

Home of the Maine International Film Festival (July 13 - 22)
www.MIFF.org

- Sunblocks •Weatherproofs •Resists Gas & Oil •Beautifies
- Low Maintenance
- Saves Money



If your drive way is 6 months old or it's been 2 years since your last seal coat,
YOU NEED OUR SERVICES

Normile Sealcoating

1 Year Guarantee ~ Fully Insured ~ Free Estimates
Call 207-332-4131
SERVING CENTRAL MAINE FOR 13 SEASONS

LET HOULE'S TURN A SUMMER HOT SPOT INTO A COOL HANGOUT.



A Mitsubishi Electric Ductless Air Conditioner will keep your problem room cool in the summer and energy-efficient all year-round. And because there's no need for ductwork, we can install it for you in hours, not days — no muss, no fuss.
Let us show you how that hot spot can become your favorite space. Call today.

Houle's Plumbing, Heating, & Air Conditioning

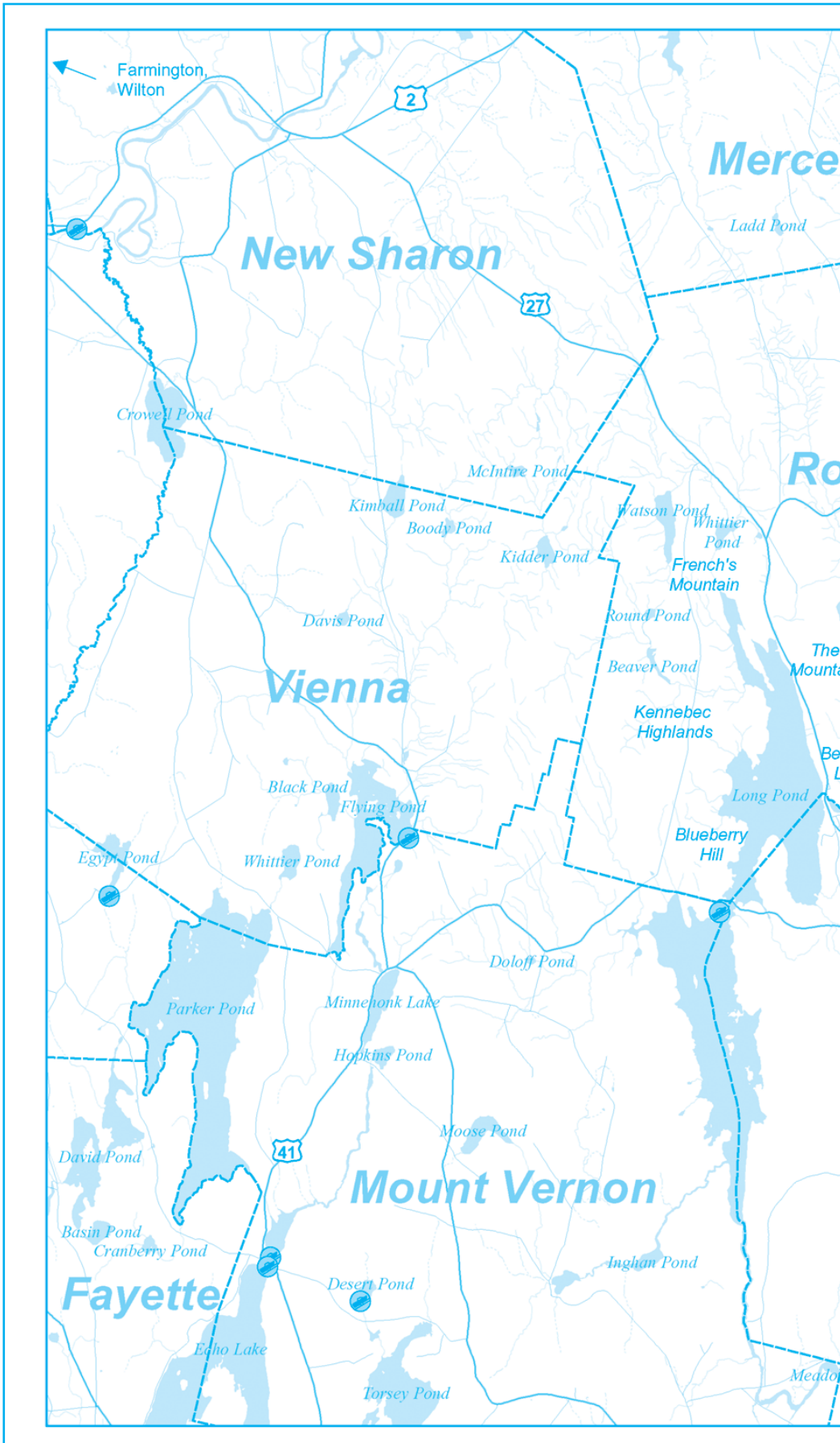
AMERICA'S #1 SELLING BRAND OF DUCTLESS
www.mitsubishicomfort.com



MITSUBISHI ELECTRIC
COOLING & HEATING
Live Better

**FINANCING AVAILABLE
CALL US AT 872-6762**

Houle's Plumbing, Heating & Air Conditioning
19 North Street, Waterville, ME 04901
SEE US FOR ALL YOUR A/C, PLUMBING & HEATING NEEDS
www.houlesphac.com



MAINE



EYE CARE ASSOCIATES

"Serving Maine Since 1922"

- Comprehensive Eye Exams
- Eyewear Center
- State of the art Cataract Surgery
- Glaucoma
- Retinal Diseases
- Laser Surgery
- Oculoplastic Diseases

• Ambulatory Surgery Center



James R. Putnam, M.D. Steve R. Witkin, M.D. Michael G. Garvey, M.D.



Helen Bell-Neceveski, O.D. Lorie Lepley Parks, O.D.

325A Kennedy Memorial Drive **873-2731**
Waterville, Maine 04901 **(800) 660-3403**
www.MaineEyeCare.com

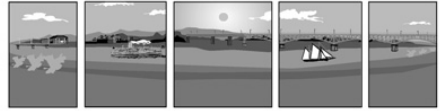
Riverside Farm

Restaurant & Wine Market

291 Fairfield Street, Oakland, Maine 04963
465-4439 • www.riversidefarmmarket.com

	Restaurant		Wine Market
Lunch:	Tuesday-Saturday 11-3		Tuesday-Friday 10-6
Dinner:	Thursday-Saturday 5:30-8:30		Saturday 10-4
Brunch:	Sunday 10-2		

Gypsy jazz every Sunday from 11:00 until 2:00 with Mes Amis



RIVERFRONT BARBEQUE & GRILLE

WORLD CLASS BARBEQUE

SEAFOOD, PASTA, & VEGETARIAN ENTREES

207.622.8899

300 WATER STREET, AUGUSTA, MAINE

WWW.RIVERFRONTBBQ.COM

FULL SERVICE DINING * CATERING * BULK TAKE OUT



*The
Gin Mill*
Augusta, Maine

*Augusta's finest upscale lounge featuring
fine wine, martinis, and over 100 brands
of beer from Germany to Japan*

**Thursday thru Saturday 3:00pm until Midnight,
Above the Riverfront Barbeque & Grille
at 300 Water Street
207.620.9200**

Lakepoint REAL ESTATE

"Put The Team to Work For You"

207.495.3700

GAIL RIZZO 207-242-8119
gail@gailrizzo.com



PAT DONAHUE 207-730-2331
pldcamp@msn.com



**NEW LISTING ~ SALMON
LAKE, BELGRADE** Year
round 4 BR home, water views
from all rooms, living rm, din-
ing area, country kitchen, office
area, spacious deck, guest cottage, 2 car garage w/ storage above,
sandy swim area. (1062714) **\$489,000**



**NEW LISTING ~ GREAT
POND, BELGRADE** Private classical cottage fea-
turing 9+/- acres w/ 280' +/-
water frontage, 3 BR, DR,
LR, Country KIT, cathedral ceilings, wood floors, deck, 2 car
garage w/ living quarters above, views & sandy beach area.
(1063433) **\$525,000**

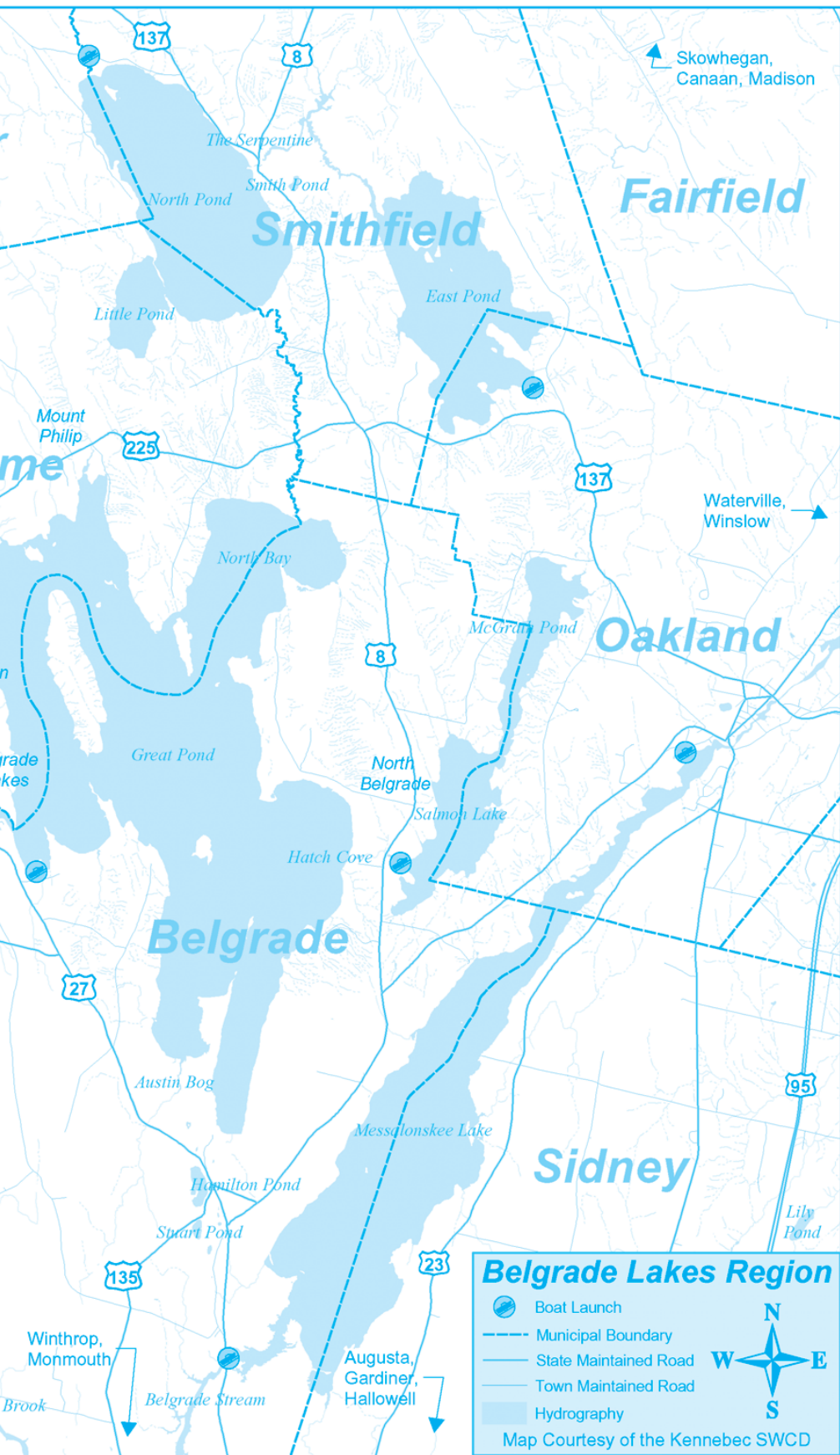


**NEW LISTING ~ LONG POND,
BELGRADE** Exceptional
multi-use property in Belgrade
Lakes Village. Current use B&B,
4 bedrooms w/ private baths,
owner's quarters, 2 BR Apt., 35'x35' barn being used as retail
space, 154' water frontage & wrap around deck. (1063493) **\$569,000**



**NEW LISTING ~ GREAT POND,
BELGRADE** Unique cottage at
water's edge, 3 BR, LR,
enclosed porch, deck, sandy
swim area, big vistas, guest
cottage, 2 car garage w/ 2 BR yr round living quarters above, LR/KIT,
full bath, & separate 1 car garage. (1063577) **\$799,999**

221 Main Street, Belgrade Lakes, Maine 04918



**21 Bay Street
Winslow**

LOBSTER TRAP and STEAKHOUSE

872-0529

*Savor the taste of
Maine while relaxing
on our deck overlooking
the Kennebec River!*



Here's A Sampling From Our Menu
Our "Famous" Lobster Stew
Jumbo Lobsters • Locally Hand-Cut Steaks • Fresh
Crabmeat Rolls
Shrimp Cocktail • Lobster Roll • Fried Clams • Fresh
Scallops & Steamed Clams •
Chef's Specialties Featured Daily
Surf & Turf Specials • Maine Crafted Ales

11 AM – 9 PM
OFF RT 95 TAKE
WATERVILLE/OAKLAND
EXIT 127 FOLLOW
RT 137 BUSINESS TO
WINSLOW
TAKE RIGHT
AFTER THE BRIDGE
WE'RE ON THE RIGHT

www.all-season.com



**Standing Seam Metal Roofing • Metal Shingles • Asphalt Shingles
Garages • Siding • Windows • Decks • Home Additions**



GREAT POND MARINA Day & Half-Day Pontoon Boat Rentals



Call: 495-2213
WWW.GreatPondMarina.com

We Get You on the Lake Fast along with Swim Noodles & Ice



Day's Store

182 Main Street PO Box 277 Belgrade Lakes, ME 04918 207-495-2205

**FRESH MEATS • LOBSTERS • BAKERY •
PIZZAS • SANDWICHES • ATM • AGENCY LIQUOR**

**LAKESIDE
SCOOPS**

Featuring



CONES SUNDAES

On Long Pond behind Day's Store

Clark Marine

Glastron GT 160 Series, Closed Bow
and Bow Rider Boats



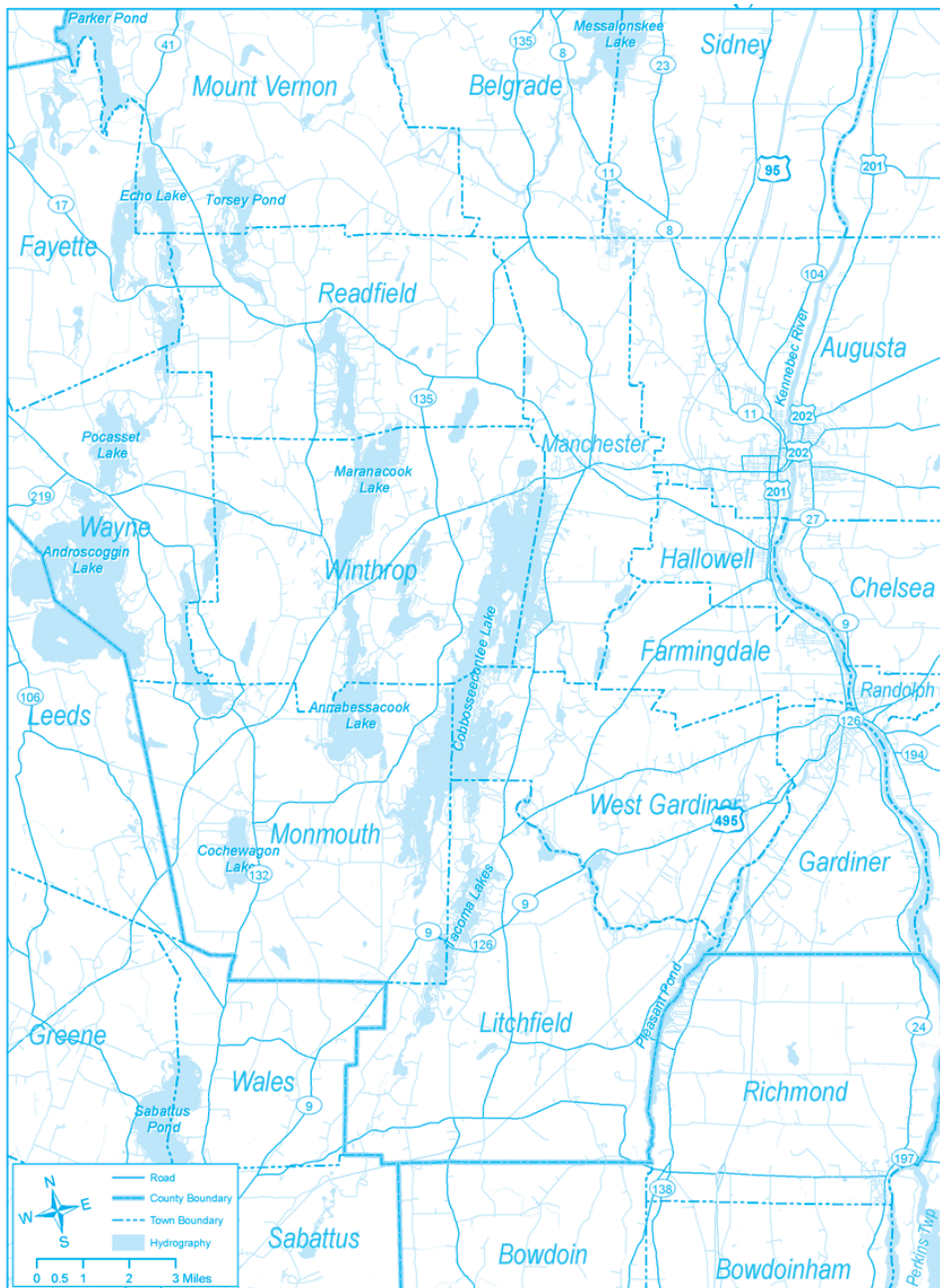
207-622-7011

**57 Puddledock Road, Manchester
funonthewaterstartshere.com**



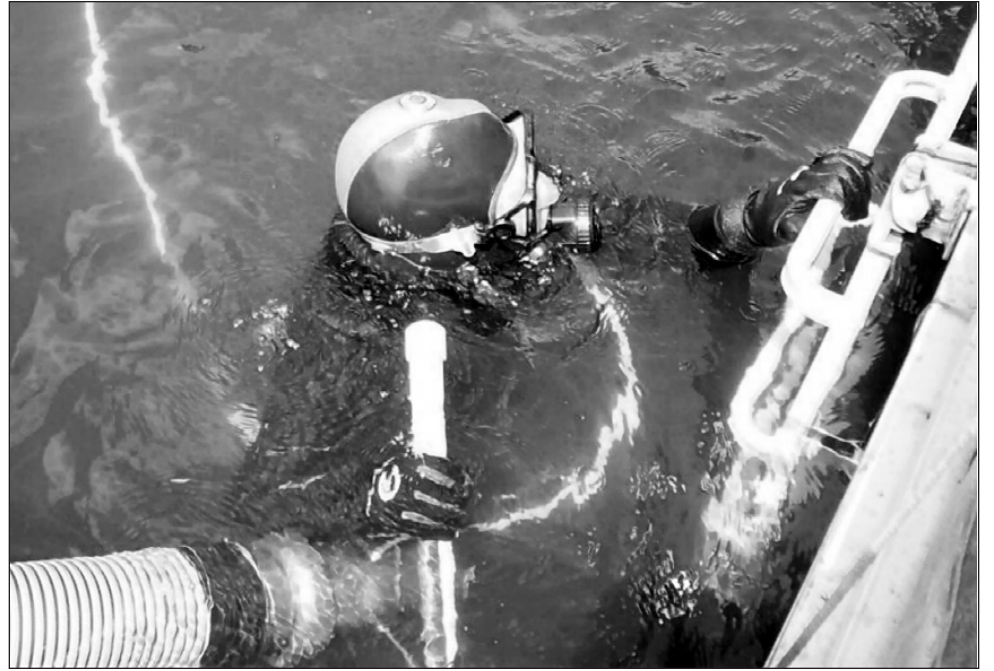


Cobbossee Watershed



Cobbossee Corner

On the Journey to Controlling Invasive Aquatic Plants



Certified Scuba Diver Zach Beaudry enters Horseshoe Pond in West Gardiner, holding the end of a 75 foot suction hose used to pump plants from the bottom of the pond to the deck of the boat.

It's been a long road to get to this point. I'm standing on the deck of a 24 foot pontoon boat that has been retrofitted with two steel cages, a 75 foot long 4 inch diameter floating suction hose, and a special air compressor where seats and a console should be. The boat is like a floating pumping machine. Under the surface waters of Horseshoe Pond in West Gardiner, certified scuba diver Zach Beaudry, trained in invasive plant removal, is clad in a full wetsuit, hood and gloves, holding the open end of the vacuum hose and feeling around in the murky water for an invasive aquatic plant called Variable Leaf (VL) Milfoil. When he grabs one, he carefully follows the plant down to the silty bottom to remove the plant by its roots, and then puts the plant into the mouth of the powerful suction hose. The plants, gathered one by one, shoot upward through the hose along with gallons of pond water and some sand and mud, into one of the steel mesh baskets on the boat. On deck, Jacob Bucklin man-

Gypsy Jazz Festival

Sunday, August 12, 2012

Riverside Farm Market

291 Fairfield Street, Oakland

noon 'til dusk, down by the river

Tickets: \$25 advance sales only, non-refundable

Tickets available by calling Janna at 207-465-4439

Food and beverage concessions

Bring your own lawn chair. Please leave the dogs at home.

Mes Amis

Hot Club du Monde

Ameranouche

Jack Soref Quartet

Gypsy Caravan

www.riversidegypsyjazzfest.net

UNION COFFEEHOUSE



Featuring Singer/Songwriter

Martin Swinger

**Great Songs, Great Energy,
Great Guitar Playing, Great Fun!
Plus Open Mic Hour**

Saturday, August 11th - 7:00 PM

Union Church - Route 27 in Downtown Belgrade Lakes
Refreshments \$5.00 Donation at the Door



Cobbossee Corner



Aboard the FOCW Diver Assisted Suction Harvester (DASH), Captain Jerry Sullivan (right) and Tender Jacob Bucklin manage the gallons of milfoil and water coming aboard, as well as scoop up any plant fragments on the pond's surface.

ages the flow of plants, water and debris with a pitch fork, allows the excess water to drain out of the basket and moves drained plants over to the second basket, which is filling up quickly with VL Milfoil.

This unusual vessel is one of the Friends of the Cobbossee Watersheds' (FOCW) best defenses in the fight against invasive aquatic plants. One of just 13 such units in Maine, the Diver Assisted Suction Harvester, or DASH, is designed to remove non-native milfoil that has infested four water bodies within the Cobbossee Watershed. The Friends DASH project was born out of the Maine Milfoil Initiative, a consortium of seven test-bed lakes throughout the state that collaborated to request seed money to build their own DASH unit. Coupled with important invasive plant research by St. Josephs' College, the grant monies provided a portion of the cost to design the DASH, build it and initiate harvesting procedures.

Along the way, volunteers and interested parties have contributed countless time and energy to get this project off the ground and into the water. In 2010, presentations were made to the surrounding towns of Litchfield, Richmond, Gardiner and West Gardiner to request town budget funding. FOCW Board Member Rick Thacker donated his time assisting then Executive Director Bob Moore in the design of the boat. Former staff member Cameron Dufour enlisted the help of his father, Donald Dufour, a professional welder, in the construction of the boat and metal baskets. By the end of summer 2010, the DASH build was virtually complete. But there were winding roads on the horizon.

The transition from build to harvest was not always a smooth one. Finding the individuals with the skills necessary to run such an operation was not easy. Luckily, Jerry Sullivan, a property owner on Cobbossee Stream who was concerned about the amount of VL Milfoil choking the stream offered to help. An experienced scuba diver, commercial boat owner and "Jerry" of all trades, he volunteered

innumerable hours of troubleshooting suction, space and weight challenges that became apparent as soon as the DASH hit the water in the summer of 2011. In addition, an old motor created one problem after another. The boat experts at Clark Marine were consulted frequently to find solutions to its operation. Ultimately, FOCW board members and other donors rallied to raise an additional \$5,000 for a new engine. The new motor was running, the harvester was running but time was running out. The summer was almost over. As a result, the local residents and property owners became frustrated at the slow progress, and limited amount of milfoil that was removed from their waters.

To ensure this summer's leg of the journey is successful and productive, the Friends has pulled together a team of folks to help support this signature effort at controlling invasive plants. The 2012 DASH Crew consists of Captain Jerry Sullivan, diver Zach Beaudry and the tender and milfoil wrangler Jacob Bucklin. FOCW Executive Director John Blouin oversees operational logistics, such as transporting the DASH boat to different locations, coordinating the off-loading and transporting of harvested plants and connecting with town officials and shoreline property owners to publicize the efforts and garner support. Youth Plant Patrol staff Shannon Power, along with Zach Beaudry, survey each water body prior to harvesting. They also do the state required mapping, to show where and to what degree VL Milfoil infestations exist. Mert Hickey and family, of West Gardiner, have not only volunteered to help in the offloading and transporting of harvested plants, but have even deposited the plants at their wood yard, where they wait for incineration or composting. Denise Blanchette, with over 10 years of scuba diving experience related to invasive plant removal, has contracted with FOCW to train staff and additional volunteers, and bring her expertise in smoothing out any procedural bumps in the road. Property owners up and down the shorelines of Upper Pleasant Pond, Horseshoe Pond and Cobbossee Stream have been extremely supportive and gracious to the efforts; allowing the Friends to park vehicles on their properties, access the water from their land and dock or moor the DASH boat.

As of my ride yesterday on the DASH, the crew has removed nearly 1000 cubic feet of VL Milfoil this summer. That's over 7,400 gallons! The more the DASH is seen out humming along and "vacuuming" up the dreadful weed, the more local residents and property owners are seeing the operation

Continued on page 19...

COLDWELL BANKER
Thomas Agency

377-2121
75 Main Street,
Winthrop ME 04364

NEW LISTING
Perfect location with level lot and gradual gravel frontage on Parker Pond. Exposed beams, open concept w/ hardwood floors, 3 large bedrooms, 2 bath & attach. oversize 2 car grge w/ overhead storage. Huge screen house, dock system & mostly furnished. Awesome Spot! **\$475,000**

Reduced
Incredible privacy comes w/ this pristine 1,000' of water frontage on Torsey Lake. Sunny contemporary home, boasts cathedral ceilings, 4 bedrooms, screened & glassed in porch, double decks w/ balcony, over sized 2 car garage & wonderfully landscaped. **\$299,900**

Reduced-Awesome waterfront property inside and out! Totally renovated, like new condition, fully furnished and appliances. Beautiful lake sunsets, sandy waterfront just a few feet away. 4 section aluminum dock, boat mooring and year round access. A TRUE VALUE IN THIS MARKET! **\$180,000**

www.coldwellbankerthomas.com info@coldwellbankerthomas.com

school street
yoga
second street

Strong Body - Vibrant Mind - Soft Heart

Several Classes - Certified Teachers
all levels taught & drop-in's welcome

Waterville - Hallowell
207-330-1450

for class schedule & information
www.schoolstreetyoga.com

**THIRTY-SIX
GREAT REASONS**
MAINE'S ONLY 36-HOLE
PUBLIC GOLF COURSE
THE LARGEST GOLF FACILITY
NORTH OF BOSTON

Championship Golf, Full Pro Shop,
Driving Range, & Modern Clubhouse.
Groups Welcome

Natanis
GOLF COURSE

Webber Pond Road,
Vassalboro, ME • 207-622-3561

LAKEWOOD GOLF COURSE

Consider playing Lakewood,
a Natanis partner course.

Route 201 North, Madison, ME
474-5955

CSS Cayer
Security Services, Inc.

RESIDENTIAL COMMERCIAL FINANCIAL
Protect what matters most.

CCTV
Fire Alarms
Burglary Alarms
Alarm Monitoring
Low Temperature Alarms
Emergency Response Units
(For the Elderly/Disabled)

CALL TODAY
To secure your
home, camp,
or business.

453-9177
208 College Avenue, Waterville

www.cayersecurity.com

PEPPERS

Garden & Grill
357A Main Street, Winthrop
377-8877

Tuesday	Wednesday	Thursday	Fri. & Sat.
Two-fer Menu	Pizza Night	Surf & Turf Night	Prime Rib & Specials

Hours: Tues.-Thurs. 11:30-8:30, Fri. & Sat. 11:30-9
Banquet facility for up to 30



— Upcoming —

AUGUST

- The Friends of Lithgow Library are holding a cash only Book Sale at the former church on the corner of Oak & State Streets on Friday, August 17, 7 am-7 pm, and Saturday, August 18, 9 am-noon. \$5 a bag Saturday. 626-2415
- The Summer Reading Program Picnic will be held on Saturday, August 18 at 12 noon at the Hubbard Free Library, 115 Second Street, Hallowell. Friends of Hubbard Free Library will host a free cook out on the library lawn with hot dogs, hamburgers, vegetarian options for parents, grandparents and kids – all welcome. 622-6582
- On Saturday, August 18 from 11 am-4 pm there will be a Healthy Family Fun Concert in Waterfront Park, Augusta, to benefit the Halcyon House Emergency Shelter for homeless and run-away youth; many live bands, food vendors, bounce house, rain or shine, tickets \$3. 873-2136
- The Annual Raffle Drawing and Neighbor Reception, sponsored by the Belgrade Lakes Association, will be held Saturday, August 18, 5-8 pm at the Maine Lakes Resource Center, 137 Main Street, Route 27, Belgrade Lakes. 512-5150

- A Family Fun Day and Fundraiser will be held on Sunday, August 19 at the Belgrade Community Center for all Seasons from 10 am-3 pm for 3-year old Kolten James who was hit by a truck while riding in a stroller. The event is being held to raise funds to support his next operation. 790-1353
- Spotter's Sprint Canoe & Kayak Paddle will start at 10:30 am on Sunday, August 19 at the YMCA Camp of Maine on Cobbossee Lake. Lunch cookout to follow for \$6 per person with no pre-registration required. Pre-registration for the race, which includes lunch, is \$20. 621-4100
- The Lively Lunches at Johnson Hall Mini-Park on Water Street in Gardiner series wraps up on Wednesday, August 22 with Antonio Rocha, storyteller of tales from around the world. 582-7144
- There will be a Guided Walking Tour of Skowhegan Island with Melvin Burnham on Thursday, August 23 at 7 pm, sponsored by the Skowhegan History House Museum & Research Center. 474-6632
- The 39th Blistered Fingers Family Bluegrass Festival featuring 12 major bands, camping, field picking, and more will be held August 23-26 at the Litchfield Fairgrounds. 873-6539

- Gaslight Theater in Hallowell presents "The Fox on the Fairway," a tribute to the great English farces of the 1930s and 1940s, August 30 and 31 and September 1 and 7-9. 626-3698
 - The Windsor Fair runs from Sunday, August 26 through Monday, Labor Day, September 3 and offers extensive agricultural and arts/crafts exhibits, a midway, animal pull events, harness racing, a wide range of displays and food booths, and an historical section. www.windsorfair.com 549-7911
- ### SEPTEMBER
- On September 7 and 8 the Hill 'n Ville, a free day-long music festival designed to welcome college students to Waterville will be held at Head of Falls in Downtown Waterville. 680-2055
 - The Let's Go! Family Fun Day is a new, annual Inland Hospital event kicking off a year-long series of activities focused on helping families with children live healthy, active lives. For more information visit www.inlandhospital.org. 861-3292
 - The 19th Annual Rise 'n Shine 5K Road Race will be on Friday, September 28 at 6:35 am - sunrise. Those who pre-register by September 14 at any Kennebec Savings Bank branch or at the YMCA will receive a free t-shirt. 622-5801.



L to R: **Sam Tippet** – Sr. Account Executive, **Roxanne Robinson** – Client Services Assistant, **David Veilleux** – Sr. Account Executive, **Kenneth Viens, CFP®** – Sr. Account Executive, **Joe Jabar, CFP®** – Sr. Account Executive /LPL Branch Manager, **Cheryl Flewelling** – Client Services Director



Kennebec Wealth Management is a comprehensive financial services firm committed to helping you improve your long-term financial success. Our company is built on a solid foundation of excellent client service and in-depth market knowledge. We provide the most comprehensive and personal service available, thus earning a reputation for excellence in the industry.

For a free no-obligation consultation with any of our advisors, call (207) 660-4100

Experience

Joe has been in the financial services industry since 1996 and offers a full range of wealth management and investment services to high net worth investors, traditional brokerage customers, and institutions. As a CERTIFIED FINANCIAL PLANNER™ Joe integrates a full range of services to help clients accumulate, maintain, and preserve their wealth and ultimately to help them pursue their financial goals and dreams.



Community Involvement

- The Alford Youth Center - Board of Directors
- United Way of Mid-Maine - Board of Directors
- Coaches youth football, basketball, and baseball

**THIS MONTH'S
FEATURED ADVISOR IS
JOE JABAR**

Securities offered through LPL Financial, member FINRA/SIPC.
Insurance products offered through LPL Financial or its licensed affiliates.

Not FDIC Insured	Not Bank Guaranteed	May Lose Value
Not Insured by any Federal Government Agency		Not a Bank Deposit

Kennebec Wealth Management
Located at Kennebec Savings Bank Office Suite
226 Main Street
Waterville, ME 04901

Building Strong Relationships.

www.kennebecwealth.com

Advertising in Summertime in the Belgrades really works! Call Erle Morse at 207-495-3777 for rates and information.

KEEP YOUR BOAT BUSINESS LOCAL!

**BOAT STORAGE
WINTERIZATION
FULL SERVICE**

Call **Belgrade Boat Shop**
207-465-9720

www.belgradeboatshop.com
769 Oakland Road, Belgrade ME 04917



Apple Macintosh Support

MACINTOSH SOLUTIONS

Security/Virus & Malware Removal • Repairs • OS X, OS 9 • Networking,
• Troubleshooting • File Recovery • Training
iPhone & iPod Touch Business Integration, Cell Phone File Migration & Forensics
Website Design • Search Engine Optimization



Michael Breault

24 Welch Rd., Wilton, Maine 04294 • 207-645-5083 •
cell 207-578-0226 • mbreault@samaraconsulting.com



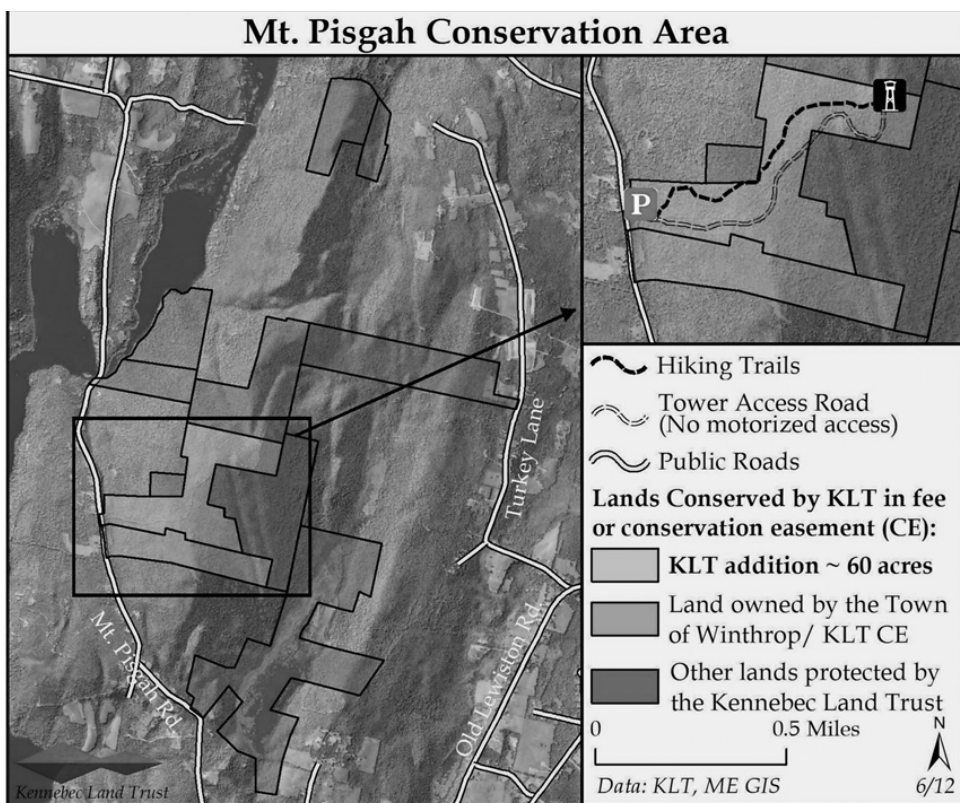
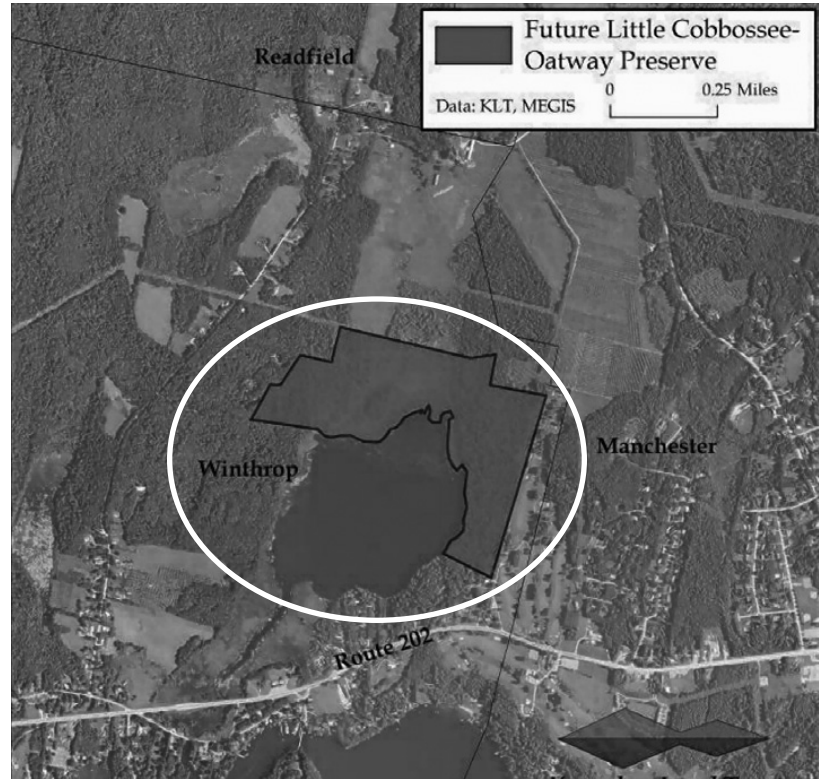
Kennebec Land Trust Working to Purchase Two New Properties in Winthrop by October 2012

July 31, 2012 The Kennebec Land Trust is currently raising funds to acquire 90 acres along Little Cobbossee Lake in Winthrop, and an additional 60 acres adjoining the 735-acre Mt. Pisgah Conservation Area in Winthrop.

The Little Cobbossee Oatway Preserve, a 90-acre property that includes 4,000 feet of undeveloped shoreline and important wetlands, wildlife habitat, and uplands, is currently owned by longtime Winthrop resident and naturalist Mary Oatway. When conserved, this property will prevent suburban sprawl in an ecologically sensitive area and protect water quality, while also preserving a popular, scenic view from Maine Route 202.

The Kennebec Land Trust received \$155,000 from the Maine Natural Resource Conservation Program (MNRCP) for the project in November 2011, an awards program that funds the restoration, enhancement, or preservation of wetlands and other important habitats in Maine. With a campaign goal of \$30,000, the Land Trust is committed to raising the remainder of the funds needed to purchase and steward this community conservation property.

The Mt. Pisgah Conservation Area, a popular outdoor recreation area, includes 735 acres of mountain and valley lands and a network of trails through beautiful woodlands and wetlands. This KLT conservation property provides opportunities



for walking, cross-country skiing, snowshoeing, kayaking, canoeing, fishing, and hunting. The Land Trust has entered into a contract for the purchase of a new 60-acre parcel adjacent to the Town of Winthrop's Mt. Pisgah Tower parcel. KLT needs to raise \$83,000 by late September for the purchase and stewardship of this parcel. An expanded Mount Pisgah hiking trail network and former blueberry picking areas will be available to the public once the property is purchased.

Generous members, business partners, and friends of the Mt. Pisgah Conservation Area and Little Cobbossee Oatway Preserve have provided initial financial support for the Land Trust's campaigns.



Kayaker on Little Cobbossee. Photo by Jane Davis

... continued from page 17

and getting excited about the effort to protect our water ecosystems and property values. We're hopeful that with this small nugget of success, public support will gather around this valiant effort. But it's just the tip of the iceberg. There are acres of VLM and due to the limited funding support; the Friends DASH is operating only two days a week.

However, with increased funding and volunteerism, a five day a week, all summer long initiative is possible. Investing in a full-time seasonal operation

is the only way we will see the same positive results as other Maine lakes battling invasive plants like Lake Arrowhead in Waterboro and Thompson Lake in Oxford. Both lakes have seen a reduction in number of infested areas as well as a reduction in number of plants removed from exiting boats, after just a few years of harvesting operations. It is a long road, but if we continue to work together, the journey to controlling invasive plants will be successful in the end.



Charming colonial nestled between Great Pond and Salmon Pond in beautiful North Belgrade. Multiple rooms for great entertaining with 3 gorgeous stone fireplaces! Master Suite with built in closets and many extras. Private 5 acres with fabulous mature gardens. New Price: \$199,000
Call Stephanie Yeaton at Lakepoint Real Estate today!
(207) 592-5577 or (207) 495-3700

Lakepoint
Real Estate

Annual Raffle Drawing and Neighbor Reception, Saturday, August 18th. Sponsored by the Belgrade Lakes Association. Don't miss a relaxing night out with refreshing drinks and superb appetizers. Join your neighbors and hear local musicians. Last chance to buy raffle tickets. At the Maine Lakes Resource Center, 137 Main Street, Belgrade Lakes Village, 5:00-8:00 p.m. The raffle drawing will be at 7:30 p.m. 512-5150.

DAVID STEVENS
Excavation & Septic Systems

LOAM GRAVEL SAND

465-3815
Cell: 314-0314

P.O. Box 146 • Belgrade, Maine 04917

Be Lake Friendly, Be LakeSmart!

Learn how to make your shorefront property more lake-friendly to protect and preserve your lake's water quality. Sign up now!
Contact David Gay, BLA
LakeSmart coordinator,
207-397-5465



www.blamaine.org
info@blamaine.org

The LakeSmart program is sponsored by the Belgrade Lakes Association, paid for by its members, and operated in cooperation with the Maine Dept. of Environmental Protection.



The Village Meddler

Open 6 Days
9am–6pm
Sundays
12pm–6pm
Closed Tuesday

Gifts • Handcrafts

Lake Shore Drive • Belgrade Lakes
495-7707

ALDEN CAMPS
Est. 1911

3 Alden Camps Cove
Oakland, Me 04963
(207-465-7703)

- Lobster Bakes on Friday nights by Reservation
- Lakeside Cottages • Boats & Motors
- Full American Plan
- Dining on the Porch by reservation Saturday through Wednesday

E-mail: info@aldencamps.com • Website: www.aldencamps.com

Why Pay More?
LARGEST SELECTION OF
Beer • Wine
Soda & Liquor

Over 1600 Wines
Great Selection of
Distributor Close-Out Wines
Over 400 Beers including
All Microbrews
Full Selection of Liquor
Debit & Credit Cards accepted

JOKAS' DISCOUNT BEVERAGES

Central Maine's Largest Redemption Center
873-6228 • 52 Front Street • Waterville

The Village Inn
Belgrade Lakes, Maine

Open for Dinner Seven Days A Week 5pm–9pm
Join us at The Tavern At The Village Inn
Lower Level – Open Every Day at 4 pm

Reservations Encouraged
(207) 495-3553
www.villageinnnducks.com
"Where Memories Last a Lifetime"

O'Brien's Irish Restaurant & Pub

Fine dining in a rustic restaurant featuring nightly specials. Irish Pub serves, lunch, dinner, & spirits.

Eat and stay at the
Best Western Plus Waterville

Reservations: 873-0111
207-872-2310
www.watervillemainehotel.com
Exit 130 off I-95, 375 Main St., Waterville, Maine

– Accommodations –

Alden Camps, American Plan cottages, boat rentals, 3 Alden Camps Cove, Oakland, 465-7703, www.aldencamps.com

Among the Lakes Bed & Breakfast, Rt 8, North Belgrade, 465-4900, www.amongthelakes.com

Bear Spring Camps, 60 Jamaica Point Rd., Rome, 397-2341, www.bearspringcamps.com

Belgrade Cottages, 9 Bass Lane, Belgrade, 495-9217, www.belgrade-cottages.com

Castle Island Camps, American Plan, Castle Island Rd, Belgrade Lakes, 495-3312, www.castleislandcamps.com

Kozy Cove Cottages, Rt 8, Salmon Lake, Belgrade, 465-0959, www.kozy-covecottages.com

Loon Ridge, cottages, 1339 Augusta Road, Rt 27, Belgrade, 495-2294, www.LoonRidge.com

The Village Inn, 1 & 2 bedroom suites, Rt 27, Belgrade Lakes Village, 495-3553, www.villageinnnducks.com

Whisperwood Cottages, American Plan, boat rentals, 103 Taylor Woods Rd, Belgrade, 465-3983, www.whisperwoodlodge.com

Wings Hill Inn, Rt 27, Belgrade Lakes, 495-2400, 866-495-2400, www.wingshillinn.com

RESERVATIONS SERVICES

Belgrade Vacation Rentals, 81 Main St, Belgrade Lakes, 495-4011, www.belgradevacationrentals.com

Colby Museum News Summer 2012

The Passing of a Legendary Director

Hugh J. Gourley III, who directed the Colby College Museum of Art for 36 years and is credited with building its renowned reputation, died July 25 in Portland, Maine. Under Gourley's leadership, the Museum grew from two rooms to an expansive complex capable of presenting one of the best collections in New England. Current Colby Museum director Sharon Corwin recently described Gourley as "a legend, and such an important figure in the art world in Maine and beyond." There will be a memorial for Gourley on Monday, October 22, at 1:30 p.m. in Colby College's Lorimer Chapel, followed by a reception at the Museum.

The Glass Is On

Finishing touches are currently underway on the glass exterior to the Colby Museum's new Alford-Lunder Family Pavilion, which incorporates more than 360 rectangular glass panes. Each is treated with a ceramic pattern to moderate solar heat gain and light transmittance, one of many environmentally savvy measures aimed at making LEED-silver certification possible. At night the glass exterior will evoke a lantern and by day it will function as a canvas that softly reflects the campus. Construction continues on the building into next year with a grand opening in July 2013, when the Museum will present the

exhibition *The Lunder Collection: A Gift of Art to Colby College*

O'Keeffe's Lake George Comes to Maine

A recent addition to the Lunder Collection brings a bit of wilderness from upstate New York to Maine: a 1922 pastel by Georgia O'Keeffe entitled *Lake George in the Woods*. Composed of deep, jewel-like blues, greens, and browns, it offers an abstract vision of the place where O'Keeffe spent more than ten summers early in her career. Visitors will have a chance to see *Lake George in the Woods* next summer, when it will be installed with other highlights from the Lunder Collection for the opening of the Alford-Lunder Family Pavilion.

Real Museum Experience

Every summer, three Colby students join the Museum staff as interns. This year, Dakota Rabbitt '14, Victoria Belin '12, and Alacoque Shaughnessy '15 are working on collection care and preservation, museum education, and curatorial practice. They also assisted with the preparation and opening of the exhibition Alex Katz: Maine/New York and have helped to run Lively Spaces, a summer children's dance program at the Museum

... continued from page 5

simple, sincere and the solution to many of the insecurities that haunt people's daily lives.

Meet Kate through her books: "Here If you Need Me," "Marriage and Other Acts of

Charity," and "Beginner's Grace." Or, meet her in person on August 16 at the Maine Lakes Resource Center in Belgrade Lakes. For more information call 495-3617.

Maple Leaf Self Storage
Belgrade Me • 3.3 mi off Rte 27 on Route 135
495-2191

Various size units
Owners live on site

Boat / Auto Storage
By foot or unit

Loon Ridge
1339 Augusta Road
Belgrade, Maine
207-495-2294
info@LoonRidge.com
www.LoonRidge.com

AMONG THE LAKES
BED & BREAKFAST

- Quiet, Quality Accommodations
- Friendly, Heartwarming Home
- Delicious, Hot Country Breakfast
- Air-Conditioned and Heated Rooms
- Lake Access on Great Pond
- Open Year Round

www.amongthelakes.com
Route 8, Belgrade **465-4900**

CASTLE ISLAND CAMPS

Boats, Bait, Tackle, Gas, Kayaks

Boats, Daily or Weekly
495-3312
Rentals for Long Pond Only



Dining

Augusta

• **Riverfront Barbeque & Grille and Gin Mill Lounge**, 300 Water St., Augusta. 622-8899, www.riverfrontbbq.com

Belgrade

• **Belgrade Lakes Golf Club**, lunch/snacks, West Road, Belgrade Lakes, 495-4653, www.belgradelakesgolf.com
 • **Pete's Pig**, 81 Main St., Belgrade Lakes Village, 495-4095, www.petespig.com
 • **The Village Inn**, Rte. 27, Belgrade Lakes Village, 495-3553, www.villageinnnducks.com
 • **Whisperwood**, Salmon Lake/McGrath Pond, Taylor Woods Rd, Belgrade, open to the public by reservation only, 465-3983, www.whisperwoodlodge.com
 • **Wings Hill Inn and Restaurant**, Rt. 27, Belgrade Lakes Village, 495-2400 or 800-495-2400, www.wingshillinn.com

Fairfield

• **Cacciatores**, 29 Main St, Fairfield, 872-9700.

Oakland

• **Alden Camps**, Lunch or dinner by reservations, Sat. - Wed., space permitting, 3 Alden Camps Cove, Oakland. 465-7703. www.aldencamps.com
 • **Riverside Farm Restaurant and Wine Market**, 291 Fairfield St, Oakland, 465-4439. www.riversidefarmmarket.com

Waterville

• **Restaurant & Pub at the Waterville Grand**, 375 Upper Main St, Waterville. 873-0111.

Winslow

• **Lobster Trap & Steakhouse**, 21 Bay St, Winslow. 872-0529. www.lobstertrap-seafood.com.

Winthrop

• **Peppers Garden & Grill**, 357A Main St, Winthrop. 377-8877



The Small Garden Guide

Support the Sue Boo Crew: 2012 Walk to Defeat ALS

Want to be part of something special? Join my team in the Walk to Defeat ALS® on September 8, to take a stand in the fight against Lou Gehrig's disease. I'm determined to make something good out of this unwelcome intruder into my life, so the Walk is important to me. I know there are many worthy causes you can opt to support, and I would really appreciate your help.

Your participation in the Walk, whether as a walker or a donor, will make a difference in the lives of those affected by ALS-- like me-- and in our quest for a cure. Think about the ways that ALS has impacted those around you: for a "rare disease", it seems to show up a lot. Seems like most everyone I talk to knows of someone whose life (and the lives of their loved ones) has been changed by it. Mine sure has. The money we raise will help The ALS Association lead global research, assist people with ALS, fund multidisciplinary certified clinical care centers, and foster government partnerships. Each dollar we contribute will make a difference!

There are three ways you can be a part of our effort. 1) join the team and come walk; 2) join the team as a "virtual walker" (that what my son Jack in Denver and niece Erminie in Paris are doing); or 3) make a donation to a team member (like me!). Joining the team involves collecting sponsors, and there's no minimum you have to raise. As a team member you'll be helping to get the word out about ALS and the desperate need for a cure. (And the Walk website is set up to make it easy, with lots of ideas and information to "walk" you through it.) If instead you'd prefer to make a donation to me or another team member,

that's great too. Any amount is gratefully appreciated.

I'd be so honored if you'd join me and my wonderful group of family and friends. There are links below with more information, and I'm happy to answer any questions about the walk or my experience with ALS. I hope you'll support The Sueboo Crew!

love,
Sue

For my personal web page you can visit the web address:
http://webnne.alsa.org/site/TR?px=2972935&pg=personal&fr_id=8215&et=RFfgLAcFKhBgOIHGhuydSQ&s_tafld=178733

To view the team page for The Sueboo Crew Kicks ALS you can visit the web address:
http://webnne.alsa.org/site/TR?team_id=224483&pg=team&fr_id=8215&et=o5CERwJtGDLWFMbJKtc4mQ&s_tafld=178733

Join the Sue Gawler Flower Show

Sunday, August 12

**Five Categories -
Awards and Prizes**

Fresh and Locally Grown

**Starts 8 am, Judging
10 am-12 noon
Public Viewing 12-5 pm**

465-7058, 495-3617

**Belgrades Lakes Farmers' Market
Maine Lakes Resource Center
Main Street, Belgrade Lakes**

Mainely Molding & Restoration

offers:

Jacking/Leveling Decks
Sill Repair Painting
Posts & Pads Siding

and more...
with over 30 years experience
207-634-2821

Fishing Boat Rentals on Salmon Lake & McGrath Pond

Located on the South end of Salmon Lake in North Belgrade

Now open to the Public for Dining by reservation only. 465-3983

Breakfast 8:am - 9:am, Dinner served at 5:pm
Daily menu listed on our website
Boat docking available for Lake Residents

www.whisperwoodlodge.com

Ballard Meats & Seafood

Custom Cut Meats



• Retail
• Wholesale
• Smoking



1-800-564-6328 • 622-9764

Myrtle St., Manchester, Maine

Belgrade Cottages Guide Service

Guided Fishing Trips Sunset Cruises

Wildlife and Scenic Lake Tours Canoe and Kayak Rentals

Bob Richter 207-314-8469

Great Pond - Belgrade

Cacciatores
"An Italian Steakhouse"

Waterville's Best Dining Experience

Now Serving **PRIME RIB** Fridays and Saturdays

OPEN EVERYDAY LUNCH AND DINNER
Serving Fine Wine & Cordials
Senior Discounts Everyday

Delicious Italian Food
Made with the Freshest Ingredient
Fresh Steaks, Seafood, Pasta, and Salads
Gluten-Free Pasta Available!

29 Main Street • Fairfield
872-9700 (Reservations Accepted)
www.Cacciatores.com

Appetizers at Altitude

Belgrade Lakes Golf Club

Open to the Public

Winterberry Farm
your family's local Organic Farmstand

Farm and farmstand open 7days a week 9-6
Where veggies and children grow!

Come visit the animals and tour the gardens.
Our 40 acre farm on the shores of great pond.

Certified organic produce, herbs and flowers
Pies, breads and soups
Rt.27 Belgrade, Maine • 207.495.2593
www.winterberryfarmstand.com

KENNEBEC BOAT REPAIR www.KennebecBoatRepair.com
465-9012

907 OAKLAND ROAD
BELGRADE, MAINE 04917

COMPLETE BOAT SERVICE
GELCOAT REPAIR METAL FLAKE STORAGE
PAINTING ENGINE REPAIR SHRINK WRAP
DETAILING

THE GELCOAT & FIBERGLASS HULL SPECIALIST



-Business Directory-

ACCOMMODATIONS

See page 20

ADVENTURE

Belgrade Cottages Guide Service, fishing, lake tours, canoe/kayak trips and rentals. 9 Bass Lane, Belgrade, 314-8469, www.belgradecottages.com
Maine Wilderness Tours, fishing, canoeing/kayaking, lobster picnic, bird watching, 7 Croquet Lane, Belgrade, 465-4333, www.MaineWildernessTours.com

ANTIQUES

Barbara’s Antique & Collectibles Group Shoppe, Rt 201, 414 Lakewood Rd, Madison, 474-2550, 474-8357
Heirloom Antiques & Vintage, 35 Concourse E, Waterville, 877-7877
Stoney Creek Antiques, 881 Civic Center Drive, Augusta, 626-9330

BANKING

Kennebec Savings Bank, 150 State St, Augusta, 622-5801, www.kennebecsavings.com
Maine State Credit Union, 200 Capitol St, Augusta, 623-1851, www.maine.statecu.org
Skowhegan Savings Bank, Rt 27, Belgrade, 495-7787, www.skowsavings.com

BEVERAGES

Jokas’ Discount Beverage, 52 Front St, Waterville, 873-6228, www.jokas.net

BICYCLES

Auclair Cycle & Ski, 64 Bangor St, Augusta, 623-4351, auclaircycle@msn.com

BOATS

(Besides the categories immediately following, see Canoes and Kayaks, Docks, and Boat Repair.)

BOAT COVERS

Waterville Upholstery & Canvas, 1042 Kennedy Memorial Dr, Oakland, 465-7847

BOAT LIFTS

Hammond Lumber Company, Auburn, Bangor, Belgrade, Boothbay Harbor, Brunswick, Damariscotta, Fairfield, Farmington, Greenville, Pemaquid, Portland, Skowhegan, 866-HAMMOND, www.hammondlumber.com

BOAT MOORINGS

Great Pond Marina. 25 Marina Dr, Rt 27, Belgrade Lakes, 495-2213, www.greatpondmarina.com

BOAT RENTALS

Belgrade Canoe & Kayak, Rt 27, Belgrade, 495-2005, 242-6331, www.kayakandcanoe.com
Castle Island Camps, Castle Island Rd, Belgrade Lakes, 495-3312, www.castleislandcamps.com
Great Pond Marina, 25 Marina Dr , Rt 27, Belgrade Lakes, 495-2213, www.greatpondmarina.com
Whisperwood Cottages, 103 Taylor Woods Rd, Belgrade, 465-3983, www.whisperwoodlodge.com

BOAT REPAIR

Belgrade Boat Shop, Rt 135, Belgrade, 485-6953

Kennebec Boat Repair, 907 Oakland Road, Belgrade, 465-9012, www.KennebecBoatRepair.com

BOAT SALES AND SERVICES

Belgrade Canoe & Kayak, Rt 27, Belgrade, 495-2005, 242-6331, www.kayakandcanoe.com
Clark Marine, 57 Puddledock Rd, Manchester, 622-7011, mail@clarkmarine.biz, funonthewaterstartshere.com
Hamlin’s Marine, 290 West River Road, Waterville, 872-5660, www.hamlinsmarine.com
Mid-Maine Marine and RV, 885 Kennedy Memorial Drive, Oakland, 465-2146, www.midmainemarine.com
Trailside Performance, 797 Augusta Rd (Rt 201), Winslow, 873-2366, www.trailsideperformance.com

BOAT STORAGE

Belgrade Boat Storage, 41 Pinkham’s Cove Rd, Rt 27, Belgrade, 495-3421, 314-3287, www.belgradeboatstorage.com, www.belgradeboatrentals.com
Belgrade Lakes Marine and Storage, Inc, 366 Augusta Rd, Belgrade, 495-2378, www.belgradelakesmarine.com
Clark Marine, 57 Puddledock Road, Manchester, 622-7011; and Rt 202, Monmouth, mail@clarkmarine.biz, funonthewater-startshere.com
Great Pond Marina, 25 Marina Dr, Rt 27, Belgrade Lakes, 495-2213, www.greatpondmarina.com
Hamlin’s Marine, 290 West River Rd, Waterville, 872-5660, www.hamlinsmarine.com
Kennebec Boat Repair, 907 Oakland Road, Belgrade, 465-9012, www.KennebecBoatRepair.com
Maple Leaf Self Storage, 688 Manchester Rd, Rt 135, Belgrade, 495-2191, 441-5529
Mid-Maine Marine and RV, 885 Kennedy Memorial Dr, Oakland, 465-2146, www.midmainemarine.com
Trailside Performance, 797 Augusta Rd, Rt 201, Winslow, 873-2366, www.trailsideperformance.com

BOOKS

CHILDREN’S BOOK CELLAR, 52 Main St, Waterville, 872-4543, kidsbookseller@verizon.net

BOTTLE AND CAN REDEMPTION

Jokas’ Discount Beverage, 52 Front St, Waterville, 873-6228, www.jokas.net

BUILDERS

(See also Kitchens, Plumbing, and Excavating)

All Season Home Improvement. 823 Church Hill Rd., Augusta, 626-3039, 800-464-3039, www.all-season.com
Craig’s Carpentry/North Bay Estates, Rt 8, North Belgrade, Craig Alexander, 649-3749
G&L Contracting, Adam Gardner, Belgrade, 215-7951
LakeHouse Design Build, Serving Central Maine’s Waterfront Design Build Needs Since 1987. 10 Liberty Lane P.O. Box 663 Readfield, Maine 04355 www.lakehousedesignbuild.com 207.685.7393 -207.242.3663
Mainely Molding & Restoration, 449 Wilder Hill Rd, Norridgewock, 634-2821, www.mainelymolding.com

BUILDING MATERIALS

Gagne and Son, 28 Old Rt 27, Belgrade, 495-3313, www.gagneandson.com
Hammond Lumber Company, Auburn, Bangor, Belgrade, Boothbay Harbor, Brunswick, Damariscotta, Fairfield, Farmington, Greenville, Pemaquid, Portland, Skowhegan, 866-HAMMOND, www.hammondlumber.com

CANOES AND KAYAKS

Belgrade Canoe & Kayak, Route 27, Belgrade, 495-2005, 242-6331, www.kayakandcanoe.com
Belgrade Cottages Guide Service, fishing, lake tours, canoe/kayak trips and rentals. 9 Bass Lane, Belgrade, 314-8469, www.belgradecottages.com

CLOTHING

New Balance Factory Outlet, 13 Walnut St, Skowhegan, 474-6231, www.newbalance.com, nbfactorystore.com

COMPUTER CONSULTANTS

Samara Consulting, Macintosh Consultant, Michael Breault, 24 Welch Rd, Wilton, 645-5083, cell 578-0226, mbreault@samaraconsulting.com, www.samaraconsulting.com

DENTAL CARE

The Complete Dental Center, 107 Birch St, Farmington, 860-2781

DINING

(See Dining Directory on page 21)

DOCKS

G&L Contracting, Belgrade, 215-7951, agardner81@yahoo.com
Hammond Lumber Company, Auburn, Bangor, Belgrade, Boothbay Harbor, Brunswick, Damariscotta, Fairfield, Farmington, Greenville, Pemaquid, Portland, Skowhegan, 866-HAMMOND, www.hammondlumber.com
Trailside Performance, 797 Augusta Rd, Rt 201, Winslow, 873-2366, www.trailsideperformance.com

ELDER CARE

Maine-ly Elder Care, 28 Center St, Oakland, 465-3249, www.maine-lyeldercare.com

EXCAVATING

Belgrade Boat Storage, 41 Pinkham’s Cove Rd, Belgrade, 495-3421, 314-3287, www.boatstorage.com
David Stevens, P.O.Box 146, Belgrade, 465-3815, cell 314-0314

EYE CARE

Maine Eye Care Associates, 325 E. Kennedy Memorial Dr, Waterville, 873-2731, www.MaineEyeCare.com

FARMSTANDS

Winterberry Farm, 538 Augusta Rd, Rt 27, Belgrade, 495-2593, www.winterberryfarmstand.com

FINANCIAL PLANNING

Golden Pond Wealth Management, 129 Silver St, Waterville, 873-2200, www.goldenpondwealth.com
Kennebec Wealth Management, 150 State St, Augusta, 622-5801, www.kennebecsavings.com

FIREWOOD

J & M Logging, Inc. 853 Civic Center Dr., Augusta, 622-6353

FLOORING

Hammond Lumber Company, Auburn, Bangor, Belgrade, Boothbay Harbor, Brunswick, Damariscotta, Fairfield, Farmington, Greenville, Pemaquid, Portland, Skowhegan, 866-HAMMOND, www.hammondlumber.com



FLOWERS AND PLANTS

Longfellow’s Greenhouses, 81 Puddledock Rd, Manchester, 622-5965, www.longfellowsgreenhouses.com
Pierce’s Greenhouse, 407 Belgrade Rd, Oakland, 465-7788

GALLERIES

Artisan’s Barn, 163 North Rd, Readfield. 685-9787, www.theartisansbarn.com
Spring Gallery & Sculpture Garden, bronze castings, 81 Main St, Belgrade Lakes, 495-3113, www.modernartfoundry.com, www.springgallery.com

GIFTS

Kozy Cottage, 13 Church St, Oakland, 465-0959, www.kozy-covecottages.com
Day’s General Store, 180 Main St, Rt 27, Belgrade Lakes, 495-2205, www.go2days.com
The 1830 House on Long Pond, 134 Main St, Belgrade Lakes Village, 495-3277
The Village Peddler Gift Shop, Lake Shore Dr, Belgrade Lakes, 495-7707

GOLF

Lakewood Golf Course, 803 Lakewood Rd, Madison, 474-5955, www.lakewoodgolfmaine.com
Natanis Golf Course. 735 Webber Pond Rd, Vassalboro, 622-3561, www.natanisgc.com

GROCERIES

Day’s General Store, 180 Main St, Rt 27, Belgrade Lakes, 495-2205, www.go2days.com

HEALTH CENTER

Belgrade Regional Health Center, 4 Clement Way, Belgrade Lakes, 495-3323, www.healthreachchc.org
Inland Hospital, The Clinic at Walmart, walk-in health care, 80 Waterville Commons Dr, Waterville, 680-2110, www.inlandhospital.org

HEATING

Jim Webster, West Road, Belgrade, 495-2370, 462-3472

ICE CREAM

Day’s General Store, 180 Main St, Rt 27, Belgrade Lakes, 495-2205, www.go2days.com

JACKING

Mainely Molding & Restoration, 449 Wilder Hill Rd, Norridgewock, 634-2821, www.mainelymolding.com

JEWELRY

Larsen’s Jewelers, 57 Main St, Waterville, 872-6301, 800-697-1874, www.larsensjewelers.com
L.Tardif Jeweler, 62 Main St, Waterville, 872-7542, 800-834-3638

KITCHENS

Hammond Lumber Company, Auburn, Bangor, Belgrade, Boothbay Harbor, Brunswick, Damariscotta, Fairfield, Farmington, Greenville, Pemaquid, Portland, Skowhegan, 866-HAMMOND, www.hammondlumber.com

LAKE ASSOCIATIONS

Belgrade Lakes Association (BLA), Long Pond and Great Pond, PO Box 551, Main Street, Belgrade Lakes, 512-5150, www.belgradelakesassociation.com

LANDSCAPING

G&L Contracting, Belgrade, 215-7951, agardner81@yahoo.com
Lakeside Landscape, 13 Station Rd, Belgrade, 465-3039, 831-7053, 632-1086, lakesidelandscape1@yahoo.com
Longfellow’s Greenhouses, 81 Puddledock Rd., Manchester, 622-5965, www.longfellowsgreenhouses.com
Lynch Landscaping, Skowhegan, 474-2420, lynchlandscaping.com
Native Notions, 213 West Rd, Belgrade, 495-6040, 314-9538, nativenotions@hotmail.com, www.nativenotionslandscape.com

MASONRY

Michonski Brothers Mason Contractors, PO Box 656, Norridgewock, 634-2516 www.michonskibrothers.com

MEATS

Ballard Meats & Seafood, Myrtle St, Manchester, 622-9764, 1-800-564-6328

MOVIE THEATERS

Railroad Square Cinema, call for titles and times, 17 Railroad Square, Waterville, 873-6526, www.railroadsquarecinema.com

PHYSICAL THERAPY

Dockside Physical Therapy, 47 Main St, Belgrade Lakes, 495-3195, 512-2544, Fax 512-2545

PIANO SUMMER CAMP

Diane Gorman, Gorman3366@roadrunner.com, 906 Manchester Rd, Belgrade, 495-3222

PICTURE FRAMING

The Framemakers, 46 Main St, Waterville, 872-8927, www.theframemakers.com

PLUMBING

Paul Hanna's Plumbing, Belgrade Lakes, 495-3805
Houle's Plumbing, Heating and Air Conditioning, 19 North St, Waterville, 872-6762, www.houlesphac.com

PRINT, MAIL & MORE

Color Storm, Inc, Main St, Belgrade Lakes, 592-5990

PROTECTIVE COATINGS

Normile Sealcoating, pavement and roofing, 332-4131, normile.chris@gmail.com

REAL ESTATE DEVELOPMENTS

North Bay Estates, Belgrade, 649-3749, crgsnbe@yahoo.com

REAL ESTATE

Coldwell Banker Thomas Agency, 75 Main St, Winthrop, 377-2121, www.coldwellbankerthomas.com
Day's Real Estate, 262 Augusta Rd, Rt 27, Belgrade Lakes, 495-3111, 1-888-495-3111, www.daysrealestate.com
Lakepoint Real Estate, 221 Main St, Belgrade Lakes, 495-3700, www.belgradelakepoint.com
Rizzo Mattson Realtors, 219 Capitol St, Aigista. 622-9000. 800 894-7979, www.rizzomattson.com
Sprague & Curtis Real Estate, 75 Western Ave, Augusta, 623-1123, www.spragueandcurtis.com
Webber Real Estate. Main Street, Mount Vernon. 293-2601, www.webberrealestate.net

RESERVATIONS

See page 20

RESTAURANTS

(See Dining Directory on page 21)

RETIREMENT COMMUNITIES

Granite Hill Estates, 60 Balsam Dr, Hallowell, 626-7786, 1-888-321-1119, www.granitehillestates.com

SCHOOLS

St. Michael School, grades pre-K through 8, 56 Sewell St, Augusta, 623-3491, www.smsmaine.org

SEAFOOD

Ballard Meats & Seafood, 55 Myrtle St, Manchester, 622-9764, 1-800-564-6328
Lobster Trap & Steakhouse, 15 Bay St, Winslow, 872-0529, www.lobstertrap-seafood.com

SECURITY SYSTEMS

Cayer Security Services, Inc, 208 College Ave, Waterville, 453-9177, www.cayersecurity.com

SELF STORAGE

Maple Leaf Self Storage, 688 Manchester Rd., Rt 135, Belgrade, 495-2191

SEPTIC SYSTEMS

Bellavance Construction Company Inc, 31 Hulin Rd, Belgrades Lakes, 495-2492
Stanley’s Septic Tank Service & Construction, 187 Norridgewock Rd, Fairfield, 453-9819, 1-800-660-7826, www.stanleysseptic.com

SHOES AND SNEAKERS

New Balance Factory Outlet, 13 Walnut St, Skowhegan, 1-877-623-7867, www.newbalance.com

SPA

Belgrade Lakes Day Spa, “Your Premier Wellness Center,” 495-2560, www.belgradelakesdayspa.com

STONework

Gagne and Son, 28 Old Rt 27, Belgrade, 495-3313, 1-800-339-3313, www.gagneandson.com

THEATER

The Theater at Monmouth, Cumston Hall, off Rt 135, Monmouth, 933-9999, www.theateratmonmouth.org

VETERINARY SERVICES

Lakeside Veterinary Clinic, 88 Libby Hill Rd, Oakland, 465-7387, 465-8387, www.lakevets.com

WINDOWS

Hammond Lumber Company, Auburn, Bangor, Belgrade, Boothbay Harbor, Brunswick, Damariscotta, Fairfield, Farmington, Greenville, Pemaquid, Portland, Skowhegan, 866-HAMMOND, www.hammondlumber.com

WINDOW TREATMENTS

Blind Time, 24 Meadow Hill Dr, Farmingdale, 621-9832, www.blindtime.com

YOGA

School Street Yoga, Waterville-Hallowell, 330-1450, www.schoolstreetyoga.com



Expressions

Gypsy Jazz Fest

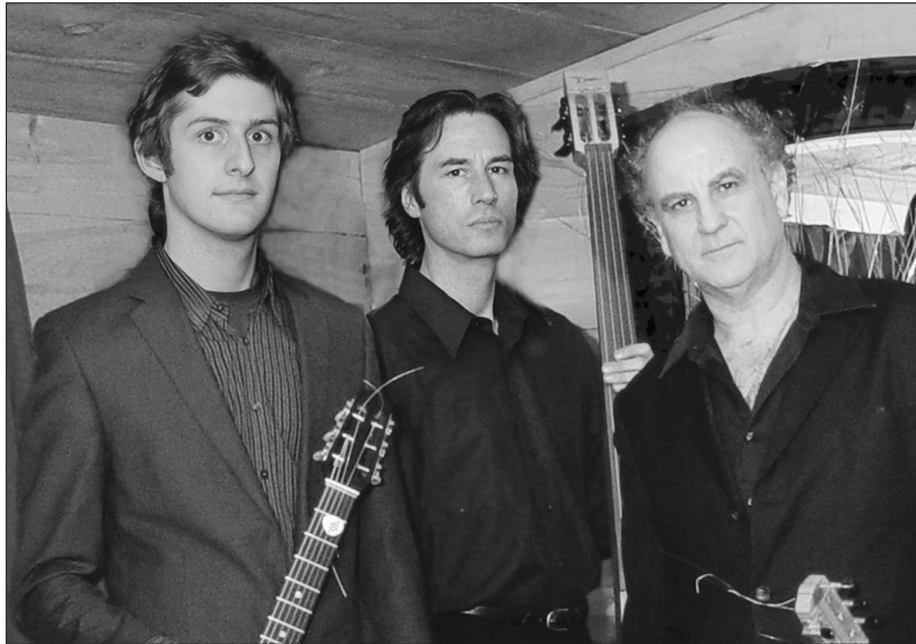
On Sunday, August 12th, Riverside Farm Restaurant & Wine Market in Oakland will be hosting its second annual Gypsy Jazz Festival. The event features five New England based Gypsy Jazz bands. The music will begin at noon with local favorites Mes Amis, followed by Hot Club du Monde, Ameranouche, The Jeff Soref Quintet and Gypsy Caravan. The location is a picturesque meadow overlooking the Messalonskee Stream behind the restaurant.

Toby Tyler, co owner of Riverside Farm with his wife Pam, has been a fan of Gypsy Jazz music since high school and in fact is one of the members of the opening act. It is his love of this music that inspired him to organize this festival, and he is hoping it will become an annual event, providing an opportunity for Gypsy Jazz fans in the central Maine area to hear the music in a festive environment.

Gypsy Jazz is growing in popularity both in Europe and here in the U.S., but for readers who are not familiar with the music, the style is attributed to virtuoso Gypsy guitarist Django Reinhardt, who along with violinist Stephane Grapelli founded the all string jazz ensemble The Quintet du Hot Club de France in the 1930s in Paris. The blending of gypsy music with American jazz created a new sound. Django died in 1953, and until recently it has largely been fellow gypsies who have carried on his musical legacy.

Along with the use of acoustic instruments, one of the unique elements of Gypsy Jazz is the absence of the drummer. Utilizing a technique referred to as "la pompe," the rhythm guitarist plays in a percussive way, driving the beat and giving the music its characteristic bounce.

There will be food and beverage concessions available, but it is recommended that you bring along a blanket or lawn chair to sit on. Tickets for the festival are by advance sales only. Tickets are \$25 and are available by calling Janna at (207) 465-4439. For more information please go to www.riversidegypsyjazzfest.net



Mes Amis

The band takes their name from the French for "my friends". The members are drawn together by their friendship as well as their love for gypsy jazz. Stevie Lynworth on Lead Guitar, and Vocals, Toby Tyler on Rhythm Guitar Greg Lindholm on Bass



Gypsy Caravan

David began his musical quest on the ukelele at age 3. He started clarinet in the 5th grade, and got serious with the guitar at age 12. He completed his Bachelors in Music Education from UMA and UMO in 1995. He is currently still performing with Roundabout, Sistolicious, Three Button Deluxe, The Ann Delaney Trio, Bel-Isle, The Novel Jazz Septet and Jump City Jazz with Brian Catell

Ameranouche
Featuring two French acoustic Gypsy jazz guitars and upright bass. Winner of Best of New Hampshire awards as well as being veterans of the famed Newport Jazz Festival.

Shepp Sheppard
on Lead Guitar
Zach Pearson on Rhythm Guitar
Stephen Gibson on Bass



Hot Club du Monde

A collection of gypsy musicians with impressive individual musical credentials. Each member has played with other well known Gypsy Jazz ensembles. The group has the quintessential gypsy instrumental format...Mike Arciero on Lead Guitar, Ryan Flaherty on Rhythm Guitar, Duane Edwards on Bass, Phil Bloch on Violin



Jack Soref Quartet

Jack has been recognized as a knowledgeable source on the technique and musical output of Django Reinhardt and his followers. Jack has been featured playing, and speaking about Django Reinhardt, on NPR's 'Here and Now' with Robin Young. Jack's playing and compositions can often be heard on Doug Gesler's FM radio show Lost Highway, on WMBR, and has recently been featured on WZBC's Sunday Morning Country with Cousin Kate.

Stoney Creek Antiques

Quality Antiques and Collectibles

antique & vintage glass/dinnerware, art, books, miniatures, vintage clothes jewelry, period furniture, Americana

881 Civic Center Drive, Augusta
10-5 Tues-Sat 626-9330



MID CENTURY MODERN,
• Works of Art
• Vintage Clothing
• Antiques • Jewelry
Tuesday – Saturday
11 am to 5 pm
Find us on Facebook!

David J. Auclair
www.auclaircycle.com

AUCLAIR
CYCLE & SKI

64-66 BANGOR ST. AUGUSTA, ME 04330
623-4351 / 800-734-7171 • Fast Professional Service
Bicycles • Skateboards • Roof Racks • Rentals

PIERCE'S GREENHOUSES

Opening May 1

SPRING HOURS
Sunday thru Saturday
9AM-5PM



407 BELGRADE ROAD
OAKLAND, MAINE 04963
207-465-7788
pierce231@gmail.com

Annuals
Perennials
Vegetable Seedlings
Herb Seedlings
Soil and Compost
Containers made to order
Hanging Baskets



Fishing

A Learning Experience

by Mike Guarino

This week was one of the best, most trying, awesome, tricky, cumbersome, mind boggling week of the year ... so far. Seriously, we caught a LOT of fish and some big fish too. But, it almost felt like the fish were playing games with us; running us around in circles until we figured them out. It's difficult to explain in words, but I'll do my best. Basically we found an area here in the Belgrades that is loaded with big smallmouth bass. They are feeding heavily on alewives and are in about 20-feet of water. During the course of the week I worked this area pretty hard in the morning, and we caught them from dawn till around 11 o'clock. What fun! Any time you can catch a bunch of three and four pound smallies consistently in the middle of the summer you've basically hit the jackpot. As an added bonus, there were largemouth and northern pike scattered around too. Here's the catch though, as we got closer to the full moon the fish became more scattered and wicked finicky. It was like they were playing games with us. The fascinating part of the whole ordeal was that the fish were at their active peak around 9 – 11 a.m. You'd think you could catch those same fish in the late afternoon, but that was a fool's errand. I find it fascinating that these smallmouth bass will move off their morning structure around mid day and not return until the next morning. Where do they go?

During the morning hours we were able to catch big suspended smallies on wacky Senkos and even top water lures like the Sammy and Chug Bugs over deep water. It was awesome, but once the sun got high in the sky, the bass would move. I spent hours trying to graph them on my electronics but could not find where they went. Once they moved off the alewives, they became very difficult to catch. What we found was that the bass were moving out into very deep water (30 – 40 feet) and suspending about 15 feet down. They are catchable with drop shots, but anglers need to be very patient – a trait that I'm not very good at! After fishing a variety of the lakes in the Belgrade chain this week, it became obvious that focusing on deep water was the key. You can drop shot lots of baits for smallies this time of year, but I am still convinced that the 3 or 4 inch Berkeley Gulp Minnow is a winner each time out.

There have been lots of requests for northern pike fishing too and although they are tricky to catch in the dog days of summer, anglers on Long Pond and Great Pond have had good success trolling for these toothy critters over deep water with Rapalas and Sutton Spoons and Mooselook Wobblers. Summer salmon trollers often catch some of the biggest pike of the year. You have to put your time in, but the fish are suspending over deep water structure, especially rock ledges that hold alewives and golden minnows.



Two young loons hanging close to mom. Their plumage is quickly changing colors and they will be ready to fly once the cold weather hits.

If fishing shallow weed flats is your target area, you might want to long line some live bait. The pike and bass still frequent these ambush areas throughout the day and can be caught on live minnows.

One of the highlights of the week was finding two juvenile loons hanging very close to their mom. Personally, I don't like to harass the birds by putting my boat too close to them, but it's almost irresistible. When you get too close the parents go nuts and start yelling and howling at you, so we try to stay a good distance away. Fortunately I got a couple of good pictures this week by zooming in with my camera. In addition to loon watching, wildlife watchers can get pretty close to a wide variety of turtles and herons if they approach nice and slow. There is a wide variety of bird and wildlife on Ingham Stream and Ingham Pond off Long Pond. Paddling in canoes and kayaks is a great way to be quiet and get very close to the birds and critters. This is a great trip for folks looking to get photos of local wildlife. If you are trying to find the elusive Sand Hill Crane, you might want to paddle around the North Bay on Great Pond. There are two sets of birds in there and they have babies with them. We also saw a pair on Austin Bog and they had one youngster with them. Good Luck!



Robert Cronell of Maryland caught this 4 pound 11 ounce largemouth last week on a live golden minnow over a fallen tree. There's lots of big bass in shallow water, especially in shady locations.

Mike Guarino can be contacted at 465-4333
www.mainewildernesstours.com



Maine Wilderness Tours Belgrade Lakes, Maine 207-465-4333

Complete packages for fishing and family vacations
 Cottage Rentals, Boat Rentals and Guide Services.
 Guided Fishing for trout, pike, bass and striped bass
 Canoeing and kayak trips
 Drift boat or remote pond fly fishing for brown, rainbow
 or brook trout.
 Private lakeside cottages available!

www.mainewildernesstours.com



Vienna - 400 FT WATERFRONT
 on Whittier Pond. 8 Acres. Sunset views.
 Swimming, fishing, kayaking, loons. Surveyed
 & soil tested. 548' on town rd with shared
 private road to site. \$129,000.
 Webber Real Estate 207-293-2601
fred@webberrealestate.net



Let us take the hassle
 out of boating!
 Daily, 3-Day, and Weekly
 Rentals Available

Rentals • Sales • Service
www.belgradeboatshop.com
485-6953
 Rt 135
 Belgrade, ME



Bear Spring Camps



- Waterfront cottages
- Home-style meals
- Bass, pike, and brown-trout fishing
- Boats, motors, docks
- Sandy beach
- 3.5 hours from Boston
- May-September

on Great Pond in the
Belgrade Lakes Region
www.bearspringcamps.com
 207-397-2341



Pet World

Water Works

One thing that can certainly strain our relationship with our pets is inappropriate urination. It may be a one time "accident", or it may become a frequent occurrence. Sometimes the reason is logical, i.e. slightly too long between opportunities to go, being too young to "hold it", inconsistent house training, or it may be a valid physical problem that results in our dog or cat going where they shouldn't and normally wouldn't.

Cats tend to be much more fastidious in their urination habits. Even from a young age they seek out areas that are designated for the purpose i.e. a litter box. When they start "missing the box" the cause may be straightforward. Sometimes a change in the type of litter (e.g. clay vs pine) or a change in the size or placement of a litterbox can trigger a pattern of "accidents". Stress or interpersonal rivalries between cats can also result in "contests". A rule of thumb for households with multiple cats is to provide a separate box for each cat, with an extra one as well. Offering different types of litter, and a variety of locations for the boxes may alleviate these behavioral issues. Mature intact male cats are very likely to "mark" or spray inside the house, leaving in a strong smell that is meant to last! Neutering male cats before sexual maturity (6 or 7 months) is very helpful in preventing this behavior. Urine marking behavior in male dogs can be avoided by timely neutering as well.

Unfortunately, a syndrome known as Feline Lower Urinary Tract Disease (or FLUTD) affects many cats, young and older alike. Although the exact cause is unknown, FLUTD results in a combination of urine abnormalities that include bleeding of the bladder, crystal (and even bladder stone) formation, and bacter-

ial infection. Often owners note that their cats begin urinating inappropriately in obvious places, such as the sink or the bath tub. This is helpful in some ways because their owners can see the blood in their urine. Urinating in other areas such as laundry, beds, clothing or shoes may be their way of getting their peoples' attention. Cats are certainly prone to routine bacterial urinary infections but FLUTD is often the initiating cause and can result in recurring "infections". It can be a life threatening issue for males who become "blocked". If left untreated, obstruction can lead to serious complications such as kidney failure, heart arrhythmia and death. Diet change along with medication are usually necessary to help control this chronic disease.

Dogs also are prone to bacterial bladder infections, particularly female dogs. Often it is not possible to "see" blood or pus in a dog's urine (unless it's winter here in Maine!). Often the more obvious signs are the dog needing to go out more often, passing small amounts of urine at a time, continually straining without producing urine, and of course, leaving urine spots in the house. Other causes of primary bladder problems in dogs include bladder stones, ulcers or polyps of the bladder wall, and cancer. Bladder stones in male dogs can be an emergency if the stones move into the urethra and cause obstruction; if a male dog is straining to urinate with little or no urine production, he should be seen by a vet as soon as possible.

Female dogs can also become incontinent, even at a young age. Usually they leak or dribble urine when asleep or relaxed on the couch, and may not even notice they are passing urine. Medication can be prescribed to control this type of incontinence. Older dogs of both

sexes may also develop incontinence due to spinal disease or disease that affects the sphincter of the bladder, such as bladder cancer. Many incontinent dogs are more prone to bacterial infections because they are frequently wet.

Beyond those caused by primary bladder problems, there are a number of systemic disorders that lead to excessive drinking and urination. Both dogs and cats can develop kidney disease/renal failure. This insidious condition can come on quickly, or slowly, but often it is not discovered until irreparable damage has occurred. The only way to detect early kidney disease is through bloodwork and urine tests. Hormonal imbalances, such as adrenal gland diseases or diabetes mellitus, may also cause excessive drinking and as a result, more urine. Medications such as prednisone or furosemide can also cause some excess urine production.

Although coming home to find urine on your floor, bed or carpet is no fun, it can be a message that something is not OK with your pet. There are a number of good products available that are designed to chemically neutralize the odor and stain of urine with enzymes. It's best to apply such a product to areas where your pet has gone; animals can smell very small amounts of their old urine and may be stimulated to use the area again when they smell it. If the problem continues, have your pet and their urine examined. A great deal of information can be gleaned by your vet from a simple urine sample. If you are not able to collect one at home, your vet has a number of tricks (and helpful staff!) to obtain a sample in the office. Having the problem diagnosed and effectively addressed will be a relief for you and your pet.



Pet World, is a bi-weekly column by Dr. Eleanor Sabeen. She can be reached at Lakeside Veterinary Clinic lakevets@roadrunner.com or by phone at 465-7387

LOCAL PEOPLE LOCAL DECISIONS LOCAL IMPACT



People around Central Maine take pride in things that are "their own."

At Kennebec Savings Bank, we feel the same because we live, work and play here, too.

If you want to know your local banker, to have decisions made by people you can trust, we invite you to join the many in Central Maine who are proud to say "That's my Bank!"

Kennebec Savings Bank

Augusta 622-5801 Waterville 872-5563 Winthrop 377-5801 Gardiner 588-5801

www.kennebecsavings.com



Sprague & Curtis

Real Estate

spragueandcurtis.com

6 2 3 . 1 1 2 3

75 Western Ave. • Augusta, ME



NEW LISTING-VASSALBORO-LAND- Nice waterfront property with 121 feet of frontage on pretty Three Mile Pond. Private location, pretty water views, old cottage needs to be removed. PRICED TO SELL! Three Mile Pond has lots to offer! **MLS#1063726 \$67,750**



NEW LISTING-READFIELD – Fabulous Colonial & just like new! Granite counters, stainless appliances & cherry kitchen cabinets are wonderful! Double LR w/propane fireplace, screened porch overlooking yard. Great FR over heated garage. Beautifully decorated, 2 story foyer. COME SEE! **MLS#1063761 \$325,000**



SIDNEY-NEW LISTING – Spacious Contemporary in a nice country neighborhood. Easy access to I-95. Cathedral LR w/stone hearth, FR, 2.5BA, attached 2 car garage plus a separate garage. Needs renovations, but much potential here. **MLS#1064076 \$172,900**



NEW LISTING-BELGRADE 28 acres/Contemporary Cape- Wonderful 3BR, 3BA home, quality updates! Pretty setting, convenient. Fabulous kitchen, tile, granite. Vaulted DR w/frplce. LR w/HW flrs, fireplace. Multiple decks, Family room, lg 2 car grg, storage. SPECIAL! **MLS#1063811 \$349,900**



WINDSOR— Just over the Augusta line! Spacious 3BR Ranch on a private 20+/- acres! Private location, yet very convenient to Augusta & Waterville. 2 full baths, cathedral ceiling, open concept. **MLS#1055253 \$189,900**



HALLOWELL— Charming Hallowell home, loads of nice features: Lrg living room w/vaulted ceilings, spacious kitchen w/dining area, den w/wood floor, very attractive interior w/many updates, pretty patio & landscaping, newer roof, convenient location. MOVE RIGHT IN! **MLS #1063675 \$132,900**



NEW LISTING-BELGRADE – Beautiful 2 story Colonial w/front porch. Great Oak kitchen island, spacious & open LR/DR. 3BR, 2.5BA, attached garage, paved drive & great neighborhood. Priced way below replacement value! **MLS#1063847 \$207,900**



FAYETTE— Immaculate Cape w/many nice amenities & ready to move into! New bamboo wood flrs, open concept living area, 1st flr MBR, 1.5BA, pellet stove in LR, pine kit w/appliances. Wonderful 2+ac lot w/lrg front yard. WONDERFUL HOME FOR THE PRICE! **MLS#1036990 \$114,900**



BELGRADE— Lovely 3BR, 2.5BA colonial w/2car grg on 2.36 acs. Well maintained, great layout. Cherry kitchen, formal DR, LR & 1st fl FR. Master BR w/bath, deck, front porch, more. Bonus FR/rec room over garage. **MLS#1059617 \$225,000**



Help Build Your Hospital...and Your Economy

Help build the MGMC New Regional Hospital in North Augusta, the place where...just in case... you or your family will receive the best in care, comfort and security when they need it.

Build a room, contribute to a wing, invest in the walls and halls or buy an intangible - a newborn's future, a senior's peace of mind, a family member's destination (or yours) when the ambulance is rolling.

Be part of the positive economic impact of the largest construction project ever in this area. \$152 million in subcontracts has been awarded to date; \$149 million of that total has been awarded to local companies and joint ventures with local companies.

Benefit from the construction work force that is 92% from Maine and mostly local-based who not only proudly feel that this is their hospital which will serve them and their families but are keeping the money – their wages – here and spending it locally.

Overall the construction project will inject an estimated \$266 million into the local economy in direct and indirect spending.

And, benefit from the health care work force. Twenty years ago manufacturing accounted for 20% of the economy in Maine; health care represented 9-10%. Today these percentages are reversed. Health care jobs are the middle class

jobs that used to be in mills and MaineGeneral Health is the area's largest local private employer. The new hospital is estimated to create 353 new jobs.

A growing economy, a sound one, and good health care will also serve to lure people back to the region.

Join the other benefactors, including Harold

Alfond who helped with the first step by building the Cancer Center and purchasing the adjoining 160 acres where the hospital is being built, and whose foundation is committing \$25 million gift to the project and a \$10 million matching fund, of which \$9.7 million has been raised to date.



The \$10 Million Challenge

MaineGeneral Medical Center is investing in the future of the Kennebec Valley in more ways than one and invites donors to join in by placing their names or that of a loved one at the heart of the new hospital.

Gifts at the following levels will be recognized as indicated:

- \$1,000 Paver
- \$2,500 Small Stone Wall Tile
- \$5,000 Large Stone Wall Tile
- \$7,500 Wall Cap.

To name a space inside the new facility with a gift of \$10,000 or more, please contact the Office of Philanthropy at 861-8676.

Contributions of all sizes are welcome, needed and greatly appreciated; all gifts will be matched by the Harold Alfond Foundation \$10 million challenge grant.



We'll come to you!

Our local loan officers will make the mortgage process convenient for you.

10-Year Fixed
Mortgage Rate
2.990%
0 Points
3.166% APR*

Other rates and terms
also available.

**Local mortgage services
right in your own backyard.**

* Annual Percentage Rate (APR) is based on a \$50,000.00 loan with 120 monthly payments of \$9,663 per \$1000.00 borrowed. The payment per \$1000.00 quoted does not include amounts for taxes and/or insurance premiums, if applicable. The actual payment obligation will be greater. Rates are effective as of June 1, 2012 and are subject to change without notice. APR is based on a 20% downpayment with no points. Eligible properties include 1-4 family owner occupied primary residences and second homes. Estimated range of closing costs is \$1000.00 to \$2500.00. Offer subject to credit approval. Other restrictions may apply.



**Skowhegan
Savings**

Integrity. Trust. Community.

skowsavings.com 800.303.9511



**Golden Pond
Wealth Management**

Big Box Store or Village Boutique?

For all the reasons you live and vacation in Maine **why not move your investments from Wall Street to "Maine Street"?**

Providing independent, conflict-free financial advice and investment management to Maine families and non-profit institutions, since 1996.



www.GoldenPondWealth.com

129 Silver Street * Waterville, ME 04901

(207) 873-2200 * info@goldenpondwealth.com

Securities offered through LPL Financial, Member FINRA/SIPC





Invest in the strength and durability of

STEEL ROOFING

Hammond Lumber Company carries a variety of steel panel profiles, including a wide selection of widths, colors and gauges. We also can provide on time delivery, competitive pricing and exceptional customer service

“SCREW-DOWN” ROOFING
 > Bare Galvalume Plus, Painted Green & Red 29 gauge steel – **IN STOCK**

“STANDING SEAM” ROOFING
 (concealed fastener system)
 >ordered custom length and short lead time

BENEFITS OF A STEEL ROOF INCLUDE:

- Low Life Cycle Cost & Durability
- Energy Efficient
- Installation Over Existing Roofs
- Fire Resistance
- Wind Resistance
- On-site estimating available
- Installation available
- Energy tax credit – see store for details*



Call us today and discover for yourself why our customers enjoy the benefits of steel roofing and the depth of service and experience we can provide.

www.hammondlumber.com






Hammond Lumber Company

Toll-free!
1-866-HAMMOND

AUBURN • BANGOR • BELGRADE • BOOTHBAY HARBOR • BRUNSWICK • DAMARISCOTTA • FAIRFIELD • FARMINGTON • GREENVILLE • PEMAQUID • PORTLAND • SKOWHEGAN

*Tax credit only applied on selected colors

Lakepoint

REAL ESTATE

207.495.3700

221 Main St.,
 Belgrade Lakes, ME 04918

www.belgradelakepoint.com



BELGRADE, DAVID POND
 Here's your chance to own a charming log home w/ shared lake access practically across the road. Sit on the screened porch or large deck and enjoy the 3.4 private acres. Heat w/ wood or propane. (1051542) **\$149,900**



NEW LISTING ~ MT. VERNON, LONG POND Private seasonal home, 300' water frontage, 1.24 acres, screen porch & over sized deck. Open concept w/ 2 BR, 2 BA & full basement w/ garage. Must see! (1061136) **\$449,900**



NEW PRICE ~ BELGRADE Spacious camp w/ deeded access to beautiful Sandy Cove beach and sunset views. Open floor plan, Newer sun room addition, 1.5 baths. Large Deck, Storage shed, Very private setting just steps from the beach. (1054601) **\$139,900**



BELGRADE Nicely maintained 3 BR, 2 BA home in Belgrade Lakes Village. Gas FP, large front porch, mudroom & deck. Detached garage & separate office/shop building. Lots of storage & automatic generator system. (1054951) **\$199,900**



ROME, LONG POND
 Enjoy wonderful sunsets from this Maine cottage in a shared waterfront community just a short walk from Belgrade Lakes Village. 2 BR cottage w/loft, screen porch, deck & new bath. Fully furnished! (1052878) **\$149,900**



NEW LISTING ~ ROME Gorgeous home w/ water access & dock to Long Pond, just a short walk away! Open KIT, DR & Liv Rm w/ FP & cathedral ceilings. Screen porch, 3BRs, Master BR w/priv bath/jacuzzi tub. Attach 2 car garage, beautiful landscaping & so much more! (1061964) **\$349,500**



NEW LISTING ~ SALMON LAKE, BELGRADE Gorgeous 3 BR lakefront home, 200' of lakefront & 8 acres. Enjoy the lake views from expansive wrap around porch, well landscaped, dock & swim area, 2 car garage. (1062215) **\$525,000**



ROME, GREAT POND 3 BR, 2 BA, office, living room, family room, play room, wraparound deck, custom kitchen, mudroom, workshop. Private w/ 135' +/- water frontage. Watch the sunsets from your dock. (1046863) **\$875,000**



MERCER, NORTH POND Great Rustic Camp. Nice level, open lot with beautiful views. Enjoy your morning cup of coffee on the dock, and enclosed porch for sleeping! Mostly furnished! (1057571) **\$115,000**



THERE'S NO TIME LIKE SUMMER TO VISIT GRANITE HILL ESTATES

Whether it's June's Annual Garden Tour or August's Annual Big Band Bash – whether it's our ongoing Art For Life series or the lush beauty of our campus – everything about Granite Hill is more vibrant and alive than ever in summer.

Granite Hill Estates is the Kennebec Valley's premiere continuing care retirement community. It's a place in which to enjoy the freedom and comfort you've earned, to have all the independence you want, to get all the amenities you deserve, and to start all the living you finally have time for.

TO LEARN MORE OR SCHEDULE A TOUR:
 CALL STEVE ROY, TOLL FREE, 888-321-1119 OR
 E-MAIL STEVEN.ROY@GRANITEHILLESTATES.COM.

60 BALSAM DRIVE, HALLOWELL, ME 04347
 © 2012 GRANITE HILL ESTATES

**GRANITE
 HILL
 ESTATES**
 GRANITEHILLESTATES.COM



EQUAL HOUSING OPPORTUNITY

A CONTINUING CARE RETIREMENT COMMUNITY

BEST SELECTION BEST SELECTION BEST SELECTIONKIDS SIZES
INFANT THRU GRADE KIDS SIZES INFANT THRU GRADEAPPAREL SOCKS
AND ACCESSORIES APPAREL SOCKS AND ACCESSORIES MULTIPLE
SIZES AND WIDTHS MULTIPLE SIZES AND WIDTH SLOW FACTORY STORE
PRICES LOW FACTORY STORE PRICES LETS MAKE EXCELLENT HAPPEN
LET'S MAKE EXCELLENT HAPPEN LETS MAKE EXCELLENT HAPPEN BEST
SELECTION BEST SELECTION BEST SELECTION BEST SELECTION KIDS
APPAREL, SOCKS AND ACCESSORIES SIZES INFANT THRU APPAREL SE

**NEW BALANCE FACTORY STORES
 ANNUAL TENT SALES**

25%^{*}
OFF
ENTIRE PURCHASE

Skowhegan • August 9-19

Sale Hours: Weekdays & Sat 8AM-6PM • Sun 9AM-5PM
 Store closed: August 7-8 & August 20-21

Skowhegan - 12 Walnut Street, ME 04976
 207-474-6231



FACTORY STORE

Shoes are factory seconds or discontinued styles. Discounts are valid at factory outlet locations only. Cannot apply to prior sales, sales prices or other offers. For first quality merchandise, visit Cadillac Mountain Sports on High St. in Ellsworth 207-667-7819 or on Cottage St. in Bar Harbor 207-288-4532. Visit www.newbalancestores.com.
 *Certain styles may be excluded from 25% offer.