

Summertime in the Belgrades



... Serving the Central Maine Lakes & Kennebec River Corridor

— A Cider Mill Press Publication —

VOLUME 14, NUMBER 5

Following the Tunes of the Towns

by Esther J. Perne

There's something about summer in central Maine – outdoor concerts are everywhere, sort of like the region's lakes and waterways – just around the bend, over the next rise, linked to the nearest village.

Want to be a summer music follower? The easiest way to know where to go is remember, every town has its day.

If it's Sunday, think Skowhegan, Sidney or Winthrop. Think tall pines and waterside parks and children tumbling on the grass. Think free and informal and everyone's welcome. Think what a great Sunday outing this will be.

If it's Sunday, settle with Winthrop at Norcross Park, enjoy a picnic and let the kids play on the swings. All concerts are free of charge and offer a family-oriented atmosphere at the edge of Maranacook Lake. Listeners are welcome to boat in and anchor nearby. Norcross Point is handicapped accessible with a paved walkway and a handicapped accessible toilet. Concerts are 2-4 pm.

If it's Sunday, seek out Sidney. The New England Music Camp has some great student concerts at 3 pm at the historic Bowl in the Pines on Messalonskee Lake. Sit on benches in the

amphi-theater area or spread blankets on the ground. Students, huh? They sure do a fabulous job.

If it's Sunday, show up in Skowhegan, pause in Coburn Park near the bandstand and listen to the performance at 5 pm. Lean back in a lounge chair or walk around this lovely garden spot on the Kennebec River. It's Sunday – enjoy!

If it's Monday, take a trip to Farmington. The Old Crow Band plays in the Meetinghouse Park Gazebo from 7-9:30 pm. Sit in a lawnchair, or even listen from the car. The Old Crow Band is a regular and plays every week, unlike other towns where the schedule always rotates.



Continued on page 2

Mid-Maine Marine Inc.
885 Kennedy Memorial Drive, Oakland, ME 04963
1/2 Mile West of Exit 127 off I-95 • 1-800-649-2628
www.midmainmarine.com

NOW IN STOCK

Cruiser CX200
Fishing FX200
Deluxe SL200

Pontoon Boat Packages to CELEBRATE Summer 2012

Wings Hill
Inn & Restaurant

Gourmet Dining
Culinary Institute Chefs
Casually Elegant Accommodations
Attentive Service

BELGRADE LAKES
www.wingshillinn.com
207-495-2400

CIRCA 1800

#1 INDEPENDENT OLD TOWN DEALER IN THE WORLD

Old Town

DEMO POND

Kayaks and Canoes

KAYAK & CANOE RENTALS
Great Selection of Paddles and Life Jackets
Belgrade Lakes and Stream Group Tours
Outlet Prices
• Old Town • Necky • Ocean Kayak

100's in Stock

BELGRADE CANOE & KAYAK
Route 27 North, 9 Miles from Augusta Civic Center
495-2005 • cell 242-6331



Continued from page 1

If it's Tuesday, hang out in Hallowell. Rock on the River Music Series is scheduled from 7-8:30 pm on the waterfront boardwalk. It's also on the rail trail. Perhaps a little biking is in order, before or after?

If it's Tuesday, return to Farmington. The Music on Main Series features several local groups, on a rotating basis, from 11:30 am-1 pm in Meetinghouse Park.

If it's Wednesday, think waterfront in Augusta. Bring a picnic and pack up the kids. At 6 pm, the music begins. What a great way to spend an evening – Kennebec Riverside and outdoors. And, it's free.

If it's Thursday, lounge on the lawn of Lithgow Library in Augusta where the Summer Concert Series takes place. Right in town, it's convenient for the stroller set. Bring chairs and enjoy staying put.

If it's Friday, check out the seasonal festivals, check out the workshops on college campuses, check out the free recitals. The Atlantic Music Festival will be at Colby College, the Jazz Camp at the University of Maine/Farmington. The large events of the summer all have live music.

If it's Saturday, go to Sidney. The student concerts continue as long as camp is in session. New England Music Camp also has Faculty Recitals and Student Recitals on a regular weekly basis. If it's Saturday, go to Sidney.

Where else is there music? Where isn't there music? Most of the churches have very talented



musicians and put on some very special summer events. Libraries and museums include music in the reading and learning programs. Parades have music and ball parks and all manner of spe-

cial programs do.

There's something about summer in central Maine. Outdoor concerts are everywhere...



**Our customers walk all over us.
And we just love it!**

www.gagneandson.com



GAGNE & SON
CONCRETE PRODUCTS

BELGRADE AUBURN WESTBROOK SACO KITTERY NAPLES TOPSHAM HOLDEN
RETAINING WALL BLOCK INTERLOCKING PAVERS CLAY BRICKS POSTS COBBLESTONE SLATE GRANITE STEPS CONCRETE BLOCKS BENCHES

**Hamlin's
Marine**

**Scout
BOATS**
The Power of Innovation



• PONTON BOATS • FISHING BOATS • SKI BOATS • RUNABOUTS • CRUISERS

Two Locations! Financing Available

290 West River Road,
Waterville • 207-872-5660

www.hamlinmarine.com

581 Main Road North,
Hampden • 207-907-4385

Walmart shopping list:

- ✓ paper towels
- ✓ bread and milk
- ✓ cholesterol screening

No appointment
needed!

Wellness Screenings

\$29 - Cholesterol

\$35 - A1C Testing

\$99 - Full Screening with Consultation

Screenings offered by caring
providers from Inland Hospital.

For more information
call 680-2110

or visit
www.inlandhospital.org

**Inland Care.
Walmart Convenience.**



Walk-in Care at The Clinic at Walmart,
80 Waterville Commons Drive, Waterville

The Clinic
at Walmart

Operated by an affiliate of:
Inland Hospital
Where YOU come first

Each medical clinic located in a Walmart store is owned and operated by an independent company that is unaffiliated with Walmart. Walmart does not employ any health care professionals or exercise any control over the provision of health care services at the clinics.

TOGETHER We're Stronger





Table of Contents

Another Town, Another Tune..... 1-2

School's Out, Gone Fishing..... 3

100th Anniversary of Woody Guthrie..... 4

Milfoil Matters: Community Matters..... 5

Conservation: The Bates Birds..... 5

Activities: Join A French Festival..... 6

Notebook: News From Around the Area..... 7

Visits, Museums, Farmers' Markets..... 8-9

Calendar of Events 10-11

Kennebec Corridor: Merry Meeting Bay Field Trips..... 12

Katy's Column: Chewonki Outdoors..... 13

Belgrades and Beyond Map..... 14-15

Cobbossee: Monmouth Opening..... 16

Cobbossee Corner:Mil-foiler Program..... 17

Upcoming: So Much To Do..... 18

Conservation Too: Demystifying Mulch..... 19

Contractors Shoreland Law Starts 1/1/13..... 19

Accommodations and Reservations..... 20

Farmers' Market with a Cafe..... 20

Dining..... 21

Garden Guide: Peas: Pick'em, Eat'em..... 21

Business Directory..... 22-23

Expressions: Hallowell Through History..... 24

Fishing with Local Guide Mike Guarino..... 25

Kennel Cough Complex..... 26

Bread Is Big Business..... 27



Eric Guilmet-president of Flying Pond Association, Deborah Dubord - second grade teacher, Pia Holmes - school principal

The Flying Pond Association has generously donated \$1,000. to the Mt. Vernon Elementary School to help continue their environmental program within their community. Eight years ago, second grade teacher, Deborah Dubord, saw an opportunity to receive funding for a unique learning project. Through the Maine Community Foundation, the Perloff Family Foundation offered \$2,500. for teachers to create exciting educational experiences for students. She wanted to provide a way for our youth to gain a respect for the many bodies of water in their town. To make this learning memorable, they needed to go fishing!

Mrs. Dubord includes parents and community members as much as possible by inviting them into the classroom for mini lessons on ice conditions, under-water habitat, fish dissecting, and erosion awareness. One evening, a few students presented a quick fish anatomy lesson to the school board. Each year, Bobbie VanRiper, a fish biologist from the Maine Dept. of Fisheries and Wildlife, has joined them on their fishing trips and has gone into the classroom to teach fish habitat. With the grant funds, two dozen fishing poles and ice fishing traps were ordered from the Mt. Vernon Country Store. These fishing supplies now belong to the school. Muffins and doughnuts were ordered from local bakeries. Those are long gone. The Perloff Family visited students and attended one of the ice fishing trips. They then renewed their grant funding for another year.

Since 2004, all students in Mt. Vernon second grade class have had an opportunity to go ice fishing on Flying Pond and open water fishing on Long Pond. These trips have always been treated as a celebration of our community water resources. Each year it's the participation of parents and community members that makes the project so successful. Fishing field trips attract more fathers and grandpas as chaperones. It sends a strong message to our youth that we have high quality water resources in our own backyard to be enjoyed, respected and preserved. Twice, the school students have worked on creating and planting a buffer to protect Minihonk Lake from rain run-off. As the initial funding for this environmental project dwindled and school budgets tightened, Mrs. Dubord has relied on parent donations of supplies and the school Parent-Teacher Committee to help fund busing expenses.

This new \$1,000. donation from the Flying Pond Association will provide new opportunities for various ways to impress upon our next generation, the beauty and pleasures our lakes and ponds have to offer. Knowing that Maine's lakes and ponds are sensitive to multiple risks that can harm them, the Mt. Vernon Elementary and now the Flying Pond Association hope to spark future environmentally conscious citizens.

Summertime in the Belgrades

--A Cider Mill Press Publication--

PO Box 290, Belgrade Lakes, ME 04918

Editor: Esther J. Perne, 207-495-3777 • ebelnews@earthlink.net

Advertising Director: Erle Morse, 207-495-3777 • ebelnews@earthlink.net

Layout Design: Michael Breault, 207-578-0226 • mo.breault@gmail.com

Webmaster : Gregor Smith • gregor@roadrunner.com

www.sumbelnews.com

This publication is copyrighted ©MMXII, Cider Mill Press Publications, All Rights Reserved.

Lakeside Landscape

Landscape Design and Installation

Come check our Retail Center

9AM-3:30PM Monday-Wednesday-Friday

- Planting (Trees, Shrubs)
- Mulch
- Walkways and Patios
- Erosion Mulch
- Retaining Walls
- Loam
- Natural Stonewalls
- Stone and Gravel
- Maintenance & Mowing
- Gravel
- Delivery available!!

Near junction of Routes 8 & 11

Phone: 207-465-3039

Cell: 207-831- 7053

E-mail:lakesidelandscape1@yahoo.com

13 Station Rd.

PO Box 407

Belgrade, ME 04917

NORTH BAY ESTATES

ROUTE 8 • NORTH BELGRADE

~ FOR SALE ~

Custom Built Homes

by Craig's Carpentry

1 & 2 acre lots

with lake views from

Great Pond overlook

Craig Alexander

cell (207) 649-3749 • crgsnbe@yahoo.com

TRAILSIDE Performance

Augusta Rd., Winslow, ME

207-873-2366

VISA

EASTERN TOWNSHIPS DOCKS

Boat Lifts Set Up and Delivery Available

Winslow, Maine

Special Pricing on Boat Storage and Shrink Wrapping Service

Huge Inventory of Trailers

Full Line of Husqvarna Power Equipment

Mission Trailers

Utility • ATV

Motorcycle • Cargo



Legacies

Almost everyone knows a song by Woodrow Wilson (Woody) Guthrie. In the hundred years since his birth in Okemah, Oklahoma in 1912, his songs about good times and bad times, kindfolks and evil folks, and the darker side of American life have lodged at the forefront of our cultural imagination. His song "This Land Is Your Land" has even been proposed as a new National Anthem.

Two Maine-based performers, Dave Peloquin (right) and Bob Webb continue their successful "Sounds Like Old Times" presentations of "roots" country and western music with a tribute to Woody on the occasion of his centennial year. They are returning to center-stage Woody's beloved people's-songs, like "Hard Travellin'," "So Long, It's Been Good to Know Yuh," and "Pastures of Plenty." Along the way, they're exploring American culture of the 1930s and '40s, when the Great Depression, the Dust Bowl and World War II drove many Americans from their homes in search of better lives.

Woody wanted to write songs that make people feel good about themselves. His case in behalf of the "common man" resonates perfectly with America in 2012, even though his untimely death in 1967 put an end to his creativity. By then, his music had influenced a new generation, including Bob Dylan, "Ramblin'" Jack Elliott, and his own son Arlo Guthrie. Woody's songs invested the folksong revival of the 1950s-'60s and the counterculture movement that accompanied it.

Woody Guthrie may be the most important songster in 20th Century America. Now, it's high time to dust off his lyrics, grab a guitar, banjo or harmonica and share with Dave and Bob the high jinks, joy and tragedy that hallmark his songbook of real American music.

For more information: Bob Webb at www.richmondwebb.com / 207-389-2477: or Dave Peloquin at 207-446-4640



Dave Peloquin (above, left) and Bob Webb, as featured in "Sounds Like Old Times" and "Woody's a' Hundred." Photo by Ed Lefkowitz



Woody Guthrie set out to write songs that made people feel good about themselves. But he looked at mid-century America with the eye of a journalist and a traveller. His songs and stories about the "Common Man" earned him the title "The Dustbowl Troubadour." His sensibility to the plight of the wandering and the homeless during the 1930s resonates well in 2012 America. There's still a lot to be learned from him, even though twelve years of suffering from inherited Huntington's Disease, and an untimely death at age 55 put an end to his creativity in 1967. By then, Woody's songs had rambled around the world faster than he ever travelled in a railroad boxcar. They provided a score for the folksong revival of the 1950s, the civil-rights struggle, union organizing, and the counterculture movement of the Sixties. His music influenced generations of folksingers and songwriters, including Pete Seeger, Bob

Dylan, "Ramblin'" Jack Elliott, Bruce Springsteen and Woody's own son, Arlo Guthrie. Dave Peloquin (who looks a little like Woody) and Bob Webb continue their Sounds Like Old Times concert presentations of early country, western and folk music with their tribute on the occasion of his centennial birthday. "Woody's A Hundred" returns the Dustbowl Troubadour's finest songs to center-stage: "Hard Travellin'," "So Long, It's Been Good to Know Yuh," and "Do-Re-Mi," as well as lesser known songs like "Dead or Alive," and a few that Woody wrote for his children. Along the way, Dave and Bob explore America of the 1930s and '40s, a time when the Depression, the Dust Bowl and World War II combined to drive many Americans from their homes. They demonstrate Woody's talent as a propagandist for the Federal government, his heroism in the service of the wartime Merchant Marine, and his feelings for the lost refugees from his native Oklahoma. Without doubt, Woody is the most important American songster of the 1930s and '40s. And his songs continue to hit home today. On his 100th birthday, it's time to honor once again this legendary artist who wrote true musical pictures of American life in the mid-20th Century.

At Mainely Molding & Restoration,
our customers are our top priority.

We provide
creative and efficient building solutions.
Whether you are
remodeling, restoring, or building new,
"we can help."

**Mainely
Molding & Restoration**
General Contractor
207-634-2821

Making our client's ideas happen
throughout the Belgrade Lakes.
Member of the U.S. Green Building Council
www.mainelymolding.com



BOOKS, PUZZLES, TOYS, GAMES

A store for children of all ages,
the young and the young at heart.
Open Monday 12 to 5 • Tues. – Sat. 9 to 5
52 Main St. Waterville 872-4543

THE FRAMEMAKERS

For Extraordinary Custom Framing
**Andrew Wyeth
Reproductions**
Conservation-framed
and ready to hang
\$49.95!

46 Main Street • Downtown Waterville
207-872-8927 • www.theframemakers.com

Quality custom framing is not
as expensive as you may think.

Come in for a free estimate!
Our award-winning staff will help you find
the right combination for any budget.

Quality Custom Framing with an
Emphasis on Excellent Customer
Service & Quick Turnaround!



207-474-2420

Design - Install - Maintain



Licensed, Certified & Accredited
For All Of Your Landscaping Needs

www.lynchlandscaping.com





Milfoil Matters

Milfoil ... A Community Problem, A Community Solution

by Lynn Matson

This column is devoted to telling the milfoil story; what it is, what problems it can cause, what's being done to stop it and what you can do to help.

Non-native milfoil is an invasive plant that has the potential to greatly diminish the recreational value of our lakes, alter the balance of the eco system in our watershed and adversely impact our entire community. It's a serious threat to everything we cherish and want to protect and preserve about this area.

Last fall, variable milfoil was found growing in North Bay in Great Pond. The good news is that it is confined to a relatively small part of the lake and an aggressive action plan is underway to remove it and keep it from spreading.

JOIN THE FIGHT, YOUR HELP IS NEEDED

Milfoil is a very real threat to our entire community. If we lose Great Pond and Long Pond to milfoil everyone will suffer; lakeshore property owners, non-lake shore property owners, renters, vacationers, boaters, fishermen, and local businesses. We're all in this together.

We can stop the spread of this milfoil infestation. But in order to do it, the whole community must help. We need everyone to get squarely behind the STOP MILFOIL Action Plan.

WHAT YOU CAN DO TO HELP

LEARN – Educate yourself, your family, your lake neighbors and friends about invasive milfoil. Learn what it looks like and what devastating problems it can cause. Check out the milfoil exhibits at the Main Lakes Resource Center in Belgrade Lakes Village and attend the next STOP MILFOIL Public Meeting scheduled there on July 17th at 6:00 PM. Keep yourself updated on the BLA website: www.belgradelakesassociation.org.

SIGN UP – Attend an EYES ON THE WATER session this summer to learn how to identify milfoil and other invasive plants. They're informative and fun and may just save our lakes. Our best protection against the widespread infestation of milfoil is early detection. Learn what it looks and help spot it early. Call 207 215-2685 for dates, more information and to sign up.

WATCH – Become a good lake steward. Get familiar with the native plants that grow in front of your camp or where you boat or fish. Then regularly check your shoreline and be on the lookout for any new invasive plants when you're on the water, especially near the shore, in bays and other shallow areas and around boat ramps.

CHECK – Carefully inspect all watercraft and trailers both before putting them in and after taking them out of all ponds, lakes, streams and rivers. Properly dispose of all plant materials. Also check motors, anchors and anchor lines, fishing gear and decoys. And please support our Courtesy Boat Inspectors.

AVOID – Stay out of Great Meadow Stream and the milfoil infested areas in North Bay in Great Pond. They are currently closed to all boating by a Surface Use Restriction issued by the Maine Departments of Environmental Protection and Inland Fish and Wildlife and clearly marked with signs and buoys. Fragmentation caused by boats, motors, paddles and fishing lures is the fastest way to spread milfoil to other parts of the lake.

VOLUNTEER – Give your time and talent to this milfoil fight. It will be put to good use. Help is needed for all kinds of important work both on and off the water.

GIVE – A goal of \$500,000 has been set for the STOP MILFOIL Capital Campaign. To date over \$152,000 has been raised from 190 individual donors. But more is needed. This money will be

used exclusively for funding milfoil mitigation work on Great and Long Pond over the next three years.

HERE'S HOW TO HELP

Call the STOP MILFOIL HOTLINE to volunteer – 207 512-5554

Send a donation to: "BLA—STOP MILFOIL" and mail it to:

Belgrade Lakes Association
PO Box 551
Belgrade Lakes, Maine 04918

GREAT POND MILFOIL ACTION PLAN UPDATE

New England Milfoil resumed their work in Great Pond last week and removed 3,040 gallons of milfoil. The BRCA milfoil crew removed 57 gallons of milfoil from Great Meadow Stream and placed 125 square feet of benthic barriers. The BRCA Survey Crew spent time surveying North Bay again this week to search for any new infestations and also surveyed some other areas of Great Pond. So far, no new infestations have been discovered.



Conservation

Three exciting projects are "for the birds" at the L.C. Bates Museum in Hinckley: Identification of mounted birds, identification of eggs, and preservation of mounted birds.

This spring two volunteers, Donald and Francia Lemieux, began helping to identify hundreds of mounted birds at the museum. The project started with African birds (mostly sunbirds) collected by the late Gerd Heinrich, and expanded to include other specimens both on display and in storage. The Lemieux team also identified other exotic birds and cases of hummingbirds, quetzals and late 19th and early 20th century birds.

Ninety-one of the bird specimens in the muse-

Bird Care at L.C. Bates Museum

um have been or currently are being cleaned and preserved by Conservator Ron Harvey of Tuckerbrook Conservation. They will then go on display.

Carolyn Zaino of Unity College is responsible for organizing some the egg collection at the museum. She labeled each egg, took pictures and made a scavenger hunt in which children can explore the museum looking for the bird connected to the egg.

For more information call 238-4250. The L.C. Bates Museum is located on Route 201 in Hinckley. Hours are Wed-Sat 10 am-4:30 pm and Sun 1-4:30 pm.



MICHONSKI BROTHERS MASONRY
Anything Brick, Block or Stone
Chimney Relining,
634-2516 www.michonskibrothers.com

Pete's Pig Southern Barbeque
Carryout & Catering
Stop By Our Locations:

- KMD, Waterville by Dead River
- 81 Main Street, Belgrade Lakes

Pulled Pork, Smoked Chicken, Brisket, Ribs, & Fresh Made Sides
207-495-4095 www.petespig.com

NATIVE NOTIONS
ECOLOGICAL LANDSCAPES
NATIVENOTIONSLANDSCAPES.COM
(207) 314-9538
Lakesmart Certified Contractor

- Patios, Walkways, Retaining Walls
- Permeable Pavers • Raingardens
- Buffer Plantings • Wildflower Fields



— Activities & Outings —



French food, music, customs, conversation: it's Le Festival de la Bastille in Augusta where the focus is heritage, fun, and remembering roots.

The weekend begins with a traditional bean supper, Opening Ceremonies, music with a Quebec flavor by local musicians, fireworks, and more music by a new group with a Cajun-country name.

Saturday starts with a Children's Program at 11 am and a Talent Show at 1 pm. At 2:20 the music begins – old favorite groups, returnees from last year. The festivities continue until 11:15 pm.

Sunday, there is a chicken barbecue starting at 11 am and music until 3:30 pm.

All of the events take place at Pete Gagne Field on the Old Belgrade Road in Augusta. For tickets and more information please 622-6211 or 592-5001. Admission is \$5 per day.

Festival de la Bastille July 13-15

FESTIVAL DE LA BASTILLE ENTERTAINMENT SCHEDULE 2012

FRIDAY

6:00 to 6:30	OPENING CEREMONIES	MEL MESERVIER
6:30 to 7:15	THE LEBLANC FAMILY	
7:30 to 8:15	CHANTAL & MARCEL	
8:30 to 9:15	DAN & LOU	
9:30 to 10:00	FIREWORKS	
10:00 to 11:30	C.J. CHENIER & THE RED HOT LOUISIANA BAND	

SATURDAY

11:00 to 12:45	CHILDREN'S PROGRAM	
1:00 to 2:15	TALENT SHOW	
2:30 to 3:15	DAN & LOU	
3:30 to 4:45	LOST BAYOU RAMBLERS	
5:00 to 6:00	BEAN SUPPER	
6:00 to 6:45	THE LEBLANC FAMILY	
7:00 to 7:45	CHANTAL & MARCEL	
8:00 to 9:30	HERT LEBLANC	
9:45 to 11:15	LOST BAYOU RAMBLERS	

SUNDAY

11:00 to 1:00	CHICKEN BARBECUE	
12:15 to 1:30	HERT LEBLANC	
1:45 to 3:30	LES FAMILLE DEUX	

The Source for all your home lending needs.



Todd LaPlante • Mortgage Loan Officer
NMLS#407682 • 621-4920 x 2315
tlaplante@mainestatecu.org

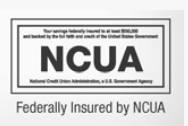


Heather Ryan • Senior Loan Officer
NMLS#407596 • 621-4920 x 2323
hryan@mainestatecu.org

For over 76 years we have provided Maine people with home lending services that feature great service and low rates. We offer a wide variety of mortgage options and we look forward to helping you find the best loan to meet your needs.

With our expanded membership eligibility, it's never been easier to join. Call us today.

- **FIXED RATE 15 & 30 YEAR MORTGAGES**
- **HOME EQUITY LOANS**
- **SECOND MORTGAGES**
- **REFINANCING**



200 Capitol Street, Augusta • 162 Hospital Street, Augusta • 81 Grove Street, Waterville



Notebook

Belgrade Regional Conservation Alliance

- Author John Ford is joining the July 20 BRCA Antique Wooden Boat Show Aquafest as a guest speaker. Ford, a retired Maine Game Warden, wrote "Suddenly, The Cider Didn't Taste So Good, Adventures of a Game Warden in Maine." Other highlights of the program include wooden boats and canoes moored at The Village Inn docks, hors d'oeuvres and drinks under the tent, an auction, and author Earl Smith, a retired Colby Dean who wrote "The Dan Committee." 495-6039

Belgrade Lakes

- Movies by the lake. Every Tuesday is movie night in back of Day's Store on Long Pond through August 21, weather permitting. Call ahead to find out what movie is playing. 495-2205

Hallowell

- Join the VORTEX Singing Circle at Harlow Gallery on Sunday, July 22, 2-5 pm. Deb Hensley and Martin Swinger of the a cappella improvisation ensemble ImproVox, along with special guest leader Virginia Schenck will lead the improv singing workshop. Participants will learn simple singing games which progress to rich harmonies and polyrhythms. No musical experience necessary. \$27 donation requested. 626-0165

Lisbon

- "We're in Moxieland" and the 2012 30th Anniversary Moxie Festival is July 13, 14, and 15. Drawing crowds of 50,000 people, the festival features the longest summertime parade in the state, a three-day Native American Pow Wow, a family-style canoe race along the Androscoggin, a 5K road race, fireworks, live music, kids games, a recipe contest, a chugging contest, food and crafts. New this year is a Moxie Concert on Saturday evening and a Moxie Car Show.

Oakland

- The Oakland/Sidney Methodist Church will hold its annual Turkey Supper with all the fixings

on Wednesday, July 11, 5-7 pm. Adults are \$8, children 6-12 \$4. 495-2075

- The Summer Camp book Sale at the Oakland Public Library continues to July 31. All book half price! Stock up for the beach or rainy days. Adult, children, hardback, paperback - all prices \$1 and under. 465-7533

Readfield

- Maranacook Summer Camps continue with a full July agenda: Write On! ages 10-12; Black Bear Baseball Camp, grades 1-12; Art Camp, ages 8-12; Gymnastics Camp, ages 6 & up; Little Kickers Soccer Camp, ages 5-8; Maranackick Soccer Camp, grades 4-8; Beginning Tennis, ages 6-10. For details, prices, dates, etc. call 685-4923 est. 1065

Sidney

- Adult Music Camp! Two sessions of adult camp will be held at New England Music Camp after the regular camper program is finished for the season: Band Week 8/26-9/1 and Orchestra 9/2-9/8. 465-3025

Skowhegan

- River Fest is coming. From July 27 through August 5 there will be activities downtown, at the fairgrounds, and on the river. Highlights include:

July 26: Art Walk, 4-8 pm
 July 28: Artisan Bread Fair
 July 29: Motorcycle Ride-In
 July 30: Pub Crawl
 July 31: Lions chicken BBQ; classic car ride-in
 August 1: Beano, Farmers' Market
 August 2: Moonlight Madness; canoe race
 August 3: Rotary Lobster Bake
 August 4: Raft rides, family events
 August 5: Raft rides, jazz brunch, Plein Air painting, family events.

For more information call 474-3621 or 612-2571

- Moonlight Madness: Bands Needed, Vendors Welcome. Moonlight Madness is back August 2 with games and fun for families in downtown Skowhegan, including bed races. Still needed are vendors, activities and bands! 474-3621

Waterville

- Donations wanted for REM yard sale August 1, 9 am-8 pm, in the REM Forum, The Center, Main Street. Donations may include furniture, books, kitchen items, decorations, and more. For pick-ups call 873-4444.

- National Night Out, an event that happens once a year across the country, will take place on Tuesday, August 7 from 5-8:30 pm for the ninth season at Green Street Park. Waterville's National Night Out Neighborhood Festival is hosted by the Waterville Police Department, the South End Neighborhood Association and the South End Teen Center. The event is FREE, open to all and includes a hot dog and hamburger cookout, snow cones and cotton candy treats, live music from the Sonny Perry Band, kids games, prizes, climbing wall, bounce house, information booths and police and fire demonstrations, and a raffle. 465-6200

Wayne

- Make-A-Movie! A week of learning and making a unique video with smart phone or camera starts Sunday, July 22 with a workshop at the North Wayne Schoolhouse on how to plan and shoot a video in under ten takes, edit and post it. Participants will leave with a mystery prop and seven days to make their own film. They will meet again on Saturday, July 28, debrief, decompress and share their experiences. The following day there will be a showing, a dessert potluck, and prizes. Want to make a movie? email Sue St. Pierre at sue_saint40@hotmail.com

Saturday 7/7 – Summer Art and Craft Fair, inside and out, vendors with many fine hand-crafted items, food, jewelry, baskets, lakeside setting, 9 am-2 pm, 293-2877, Mt. Vernon Community Center, downtown Mount Vernon.

KENNEBEC BOAT REPAIR
 465-9012
 907 OAKLAND ROAD
 BELGRADE, MAINE 04917

COMPLETE BOAT SERVICE
 GELCOAT REPAIR METAL FLAKE STORAGE
 PAINTING DETAILING ENGINE REPAIR SHRINK WRAP

THE GELCOAT & FIBERGLASS HULL SPECIALIST

Barbara's Antiques & Collectibles Group Shoppe
 Multi Dealer Shop Unique Variety of Antiques and Collectibles
 3 Miles North of Skowhegan on Route 201
 414 Lakewood Rd., Madison
 Open Mon to Sat 10-5 Sun 12-4
 474-2550

BELGRADE REGIONAL HEALTH CENTER

Providing quality care to the greater Belgrade area since 1977.

New Patients Welcome
 Call us today!

4 Clement Way, Belgrade
 Just 2 miles south of Belgrade Lakes center on Rt. 27!
 BelgradeCHC.org
 (207) 495-3323

Amy Madden, MD

Tammy Gannaway Kerr, FNP

True love needs a true jeweler.

L. TARDIF JEWELER
 62 Main Street
 Waterville, Me.

Tues - Sat
 est. 1935
 9 - 5



Calendar Directory

TOWN BY TOWN...

GREAT VISITS, AWESOME OUTINGS – INCLUDING ART, MUSIC, CULTURE, HISTORY, RECREATION, FARMERS' MARKETS, TRAILS, SCENIC SITES AND MORE...

AUGUSTA

- Arboretum, 6 miles of year round walking trails open dawn to dusk, Visitor Center open Mon-Fri 9 am-4 pm, Viles Arboretum, 626-7989, vilesarboretum.org, 153 Hospital St. *Capitol Complex, State Street*
- **Maine State House**, Hall of Flags, House and Senate Rooms, Klir Beck dioramas, Mon-Fri 8 am-5 pm, book tours at Maine State Museum, walk-ins welcome 9 am-1 pm, 287-2301, www.maine.gov
- **Art in the Capitol**, Maine Arts Commission monthly self-guided exhibits in State House hallways (Mon-Fri 8 am-5 pm), Blaine House (call for times), and Maine Arts Commission Office (8:30am-4:30 pm), 287-6746, mainearts.maine.gov
- **Governor's Mansion**, 1830 Blaine House, Tue-Thu 2-4 pm, 287-2121, www.blainehouse.org
- **Maine State Museum**, Tue-Fri 9 am-5 pm, Sat 10 am-4 pm, \$2 adults, \$1 ages 6-18, 287-2301, www.maine.state.museum.org
- **Maine State Library**, Mon-Sat opens 9 am, 287-5600, www.maine.gov/msl/

Other Museums

- **Children's Discovery Museum**, CDM, hands-on displays, actives, Tue-Thu 10 am-4 pm, Fri-Sat 10 am-5 pm, Sun 11 am-4 pm, admission, 622-2209, www.childrensdiscoverymuseum.org, 171 Capitol St.
- **Kennebec Historical Society**, Wed-Fri 10 am-2 pm, 622-7718, www.kennebechistorical.org, 107 Winthrop St.

University of Maine at Augusta, University Drive

- **Danforth Gallery**, Jewett Hall, art exhibits, UMA-1234, www.uma.edu
- **Holocaust and Human Rights Center of Maine**, Michael Klahr Center, Mon-Fri 8 am-4 pm, 621-3530, www.hhrc.uma.edu
- **UMA Fitness Trail**, 2 miles of wooded trails, near Civic Center

Riverfront/Downtown

- **Old Fort Western**, 1754 fort, house, store, 1-4 pm daily, admission \$6, 4-14 years \$4, 626-2385, www.oldfortwestern.org Cony St.
- **Riverfront Park**, boat launch, Greenway Trail, playground, eastside Kennebec River
- **Kennebec River Rail Trailhead**, Maine State Housing Authority parking lot, 623-8162, www.krrt.org, Water St.
- **Museum in the Streets**, walking/history tour, www.augustamaine.gov, downtown.
- **Farmers' Market at Mill Park**, Tues 2-6 pm, 626-2305, www.farmersmarketmillpark.org/, North Water St.

- **Farmers' Market at Turnpike Mall**, 549-5112, Wed and Sat 10 am-1 pm, Western Ave.

BELGRADE LAKES

- **Great Pond Mailboat**, 215-7520, Mon-Sat, 10 am, Post Office, Main St.
- **Spring Gallery & Sculpture Garden, Modern Art Foundry**, Thu-Sun 11 am-5 pm and by appointment, 495-3113, www.springgallerymaine.com, 81 Main St.
- **The Belgrade Community Center for All Seasons**, swimming, gym, playground, picnic area, rec programs, library, 495-3481, www.belgrademaine.com 1 Center Dr.
- **Union Church Coffee House**, check for schedule, 7:00 pm, \$5, 495-3599, www.unionchurchmaine.org, Main St.
- **Belgrade Historical Society**, monthly meetings, 465-7924
- **Farmers' Market**, Sun 8 am-1 pm, Thu 2-6 pm, 465-7058, www.belgradelakesfarmersmarket.org, Main St.
- **Peninsula Park on Long Pond**, picnic tables, Main St.
- **Maine Lakes Resource Center**, 512-5150, www.dockstodorways.com, 171 Main St.

FAIRFIELD

- **Fairfield Historical Society**, 1890 Cotton-Smith House, Tue 9 am-12 noon, 1-4 pm, 453-2998, www.fairfieldmehistoricalociety.net, 42 High St.
- **Farmers' Market**, 948-5724, Wed 2-6 pm, Sat 9:30 am-1:30 pm, Nazarene Church parking lot, 81 Main St.

FARMINGTON

- **Farmington Historical Society**, 778-2835, Wed and Sat, 11 am-2 pm, July-August, 118 Academy St.
- **Nordica Homestead Museum**, opera singer Lillian Nordica costumes, jewelry, mementos, 778-2042, Tue-Sat 10 am-12 n and 1-5 pm, Sun 1-5 pm, 116 Nordica Lane, Holley Rd.
- **Contra Dance**, 491-9928, www.starleft.org 2nd Sat of the month, all welcome, 6:30-7:30 pm family dance, 8-11 pm regular dance, admission, Grange Hall, Bridge St, Rt 43, West Farmington
- **University of Maine campus and Arboretum**, four walking tours with informal guide pamphlet to campus trees, 581-1541, www.umaine.edu/arboretum/, downtown
- **Farmers' Market**, 778-6602, Fri 9 am-2 pm, Better Living Center parking lot, Front St; Saturday 8 am-12 noon, Main St.
- **Meetinghouse Park and Gazebo**, weekly concerts throughout summer, downtown
- **Fairgrounds**, events throughout summer, Franklin County Fair in Sept, High St.

GARDINER

- **Artdogs and Circling the Square Fine Art Press**, 1-5 pm Fri, 10 am-4 pm Sat, 582-2108, 275-277, Water St.
- **Johnson Hall Performing Arts Center**, 582-7144, www.johnsonhall.org 280 Water St.
- **Farmers' Market**, 582-3100, www.gardinerfarmersmarket.org, Wed 2-6 pm, rain or shine, The Common
- **Kennebec River Rail Trail**, terminus near Gardiner/Randolph Bridge, 6.5 miles to Augusta o Waterfront Park, picnicking, events throughout summer, Kennebec River

- **The Center for Maine Craft**, 9 am-6 pm daily, 588-0021, www.maine crafts.org, West Gardiner Service Plaza, Route 126 off Routes 95 and 295

GREENE

- **Araxine Wilkins Sawyer Memorial**, free monthly entertainment programs, 946-5311, www.sawyer-foundation.com, 371 Sawyer Rd, off Rt 202

HALLOWELL

- **Harlow Gallery, Kennebec Valley Art Association**, 622-3813, www.harlowgallery.org Wed, Thu, Sat, 12-6 pm, 160 Water St.
- **Gaslight Theater**, 626-3698, www.gaslighttheater.org City Hall, 1 Winthrop St.
- **Museum in the Streets**, history / walking tour, www.historichallowell.org, downtown
- **Farmers' Market**, 622-1350, Sun 11 am-3 pm, north end of Water St.
- **Vaughn Woods**, 166 acre park/trails, Middle St.
- **Kennebec River Rail Trail**, to Augusta, Farmingdale/Gardiner, downtown
- **Waterfront Park**, weekly summer concerts, North Water St.

HINCKLEY

- **L.C. Bates Museum at Good Will-Hinckley School**, early 20th century natural history and cultural exhibits, nature trails, adults \$3, up to 17 years \$1, 238-4250, www.gwh.org Wed-Sat 10 am-4:30 pm, Sun 1-4:30 pm, Rt 201

KINGFIELD

- **Reinhart Gallery Art Center**, 266-4656, 245 Main St, www.ianreinholdt.com/gallery.html
- **Ski Museum of Maine**, by appointment, 265-2023, 256 Main St, www.skimuseumofmaine.org
- **Stadler Gallery**, 265-5025, 12-4 pm daily or by appointment. 225 Main St, www.stadlergallery.com
- **Stanley Museum**, 265-2729, www.stanleymuseum.org, memorabilia / displays on Stanley Steamers, Tue-Sun 1-4 pm, 40 School St.

LIVERMORE

- **Washburn-Norlands Living History Center**, 18th-19th century mansion / farmstead / schoolhouse, library, chapel, 897-4366, www.norlands.org, admission, living history tours Tue and Thu 1-4 pm, 290 Norlands Rd.

MADISON

- **Lakewood Theater, Maine's Summer Theater, Young Performers Camp**, 474-7176, www.lakewoodtheater.org, Rt 201
- **Skowhegan School of Painting and Sculpture**, 474-9345, www.skowheganart.org, summer evening artists lecture series, East Madison Rd.

MONMOUTH

- **Monmouth Museum**, local and regional Maine history, Wed-Sun 1-4 pm, 933-2287, www.monmouthmuseuminc.org, 751 Main St.
- **The Theater At Monmouth**, The Shakespeare Theater of Maine, Cumston Hall, 933-9999, www.theateratmonmouth.org, Main St.

WATCHES • DIAMONDS
EXPERT WATCH REPAIR • STONESETTING • GOLDSMITHING

Larsen's Jewelry

SERVING YOU SINCE 1962

57 MAIN STREET
WATERVILLE, MAINE 04901

MARK A. LARSEN

207-872-6301
1-800-697-1874

HEATING CONTRACTOR

Jim Webster,

West Road, Belgrade, 495-2370, 462-3472

PAUL HANNA'S PLUMBING



207-495-3805

New Homes and Remodels ~ Camps
Water and Sewer Pumps ~ Water Filtration

Paul Hanna, Licensed Master Plumber

G & L CONTRACTING

New Construction, Additions, Renovations

Dock Installation and Construction
Specializing in Waterfront Properties Since 2004

Adam Gardner
agardner81@yahoo.com

207-495-2325



MOUNT VERNON

- **D.E.W Animal Kingdom**, Zoo, 293-2837, www.dewanimalkingdom.com, Tue-Sun 10 am-5 pm, \$10, 918 Pond Rd, Rt 41

NEW PORTLAND

- **Nowetah's American Indian Museum and Craft Shop**, 628-4981, daily 10 am-5 pm, free, 628-4981, 2 Colegrove Rd, Rt 27, www.nowetahs.webs.com/
- **Wire Bridge**, 1864, probably only wire suspension bridge in U.S., off Rt 27

NEW SHARON

- **Farmers' Market**, Sat 9 am-1 pm, Douin's Market, 491-9025, 150 Mercer Rd, Rt 2

NORRIDGEWOCK

- **Norridgewock Historical Society Museum**, 1838 building, Sat 10 am-3 pm, 634-5032, www.norridgewock.com, Mercer Rd, Rt 2
- **Oosoola Park**, picnic area, great playground, boat launch, on Kennebec River, Rt 8

OAKLAND

- **Farmers' Market**, Fri 2-6 pm, 465-3094, Pine Acres Parking Lot, 895 Kennedy Memorial Drive.
- **Macartney House Museum**, Oakland Area Historical Society, 465-7549, Wed 1:30-4:30 pm, 1815 home with antique furnishings and Oakland artifacts, 25 Main St.

READFIELD

- **Readfield Historical Society and Museum** in 1823 school-house, 685-4662, www.readfieldhistorical.org, Thu and Sat 10 am-2 pm or by appointment, Rt 17, Readfield Depot

ROME

- **Mt. Philip Grange**, suppers 3rd Sat of month, 4:30-6 pm, all you can eat beans, cornbread, rolls, chop suey, pies, Rts 135/225
- **Trails: Mount Philip** on Rt 225; The Mountain on Rt 27; French's Mountain and Kennebec Highlands, Watson Pond Rd; 495-6039, www.belgradelakes.org, maps available at BRCA, Belgrade Lakes

SIDNEY

- **New England Music Camp**, concerts free and open to the public, famous Bowl-in-the-Pines on Lake Messalonskee, 465-3025, www.nemusiccamp.com, Rt 23
- **Sidney Historical Society**, 547-3142, <http://www.rootsweb>
- **Silver Spur Riding Club**, horse shows, www.silverspur-maine.com/, River Rd/Rt 104

SKOWHEGAN

- **Margaret Chase Smith Library**, residence, home, museum exhibits, 474-7133, www.mcslibrary.org, free, Mon-Fri 10 am-4 pm. 54 Norridgewock Ave.
- **History House Museum**, 1800s local history and culture, 474-6632, www.skowhegan.com/historyhouse, Tue-Fri 1-5 pm, Elm St.
- **Fairgrounds**, weekly horse shows/competitions at covered arena, Skowhegan State Fair in Aug, 474-3621, Madison

Ave.

- **Farmers' Market**, Wed 3-6 pm, Sat 9 am-1 pm, weekly entertainment, 938-3906, SSomerset Gristmill parking lot, downtown

SMITHFIELD

- **Fairview Grange** suppers, 362-2791, every Wed in summer, 5 pm, Village Rd, Rt 8
- **Sunbeam Roller Rink**, Wed, Fri, Sat 7-10 pm, 362-4951, 830 Village Rd, Rt 8
- **Sunset Camps**, public beach, 362-2611, www.sunsetcamps.com, Village Rd, Rt 8

UNITY

- **Unity College Centre for the Performing Arts**, folk genre music, 568-3147, www.unitymaine.org, 42 Depot St.

WATERVILLE

- **Aqua City Actor's Theatre (ACAT)**, 873-7000, www.acattheatre.org. Waterville Opera House Studio Theater, Main St.
- **Common Street Arts**, Wed-Sat 12-6 pm, 16 Common St.
- **Museum in the Streets**, downtown history/walking tour, www.the museum in the streets.com/waterville.htm
- **Two Cent Bridge**, historic foot bridge over Kennebec River, Head of Falls park/events area, Front St.
- **Colby College Museum of Art**, 859-5600, www.colby.edu/museum/ Tues-Sat 10 am-4:30 pm, Sun 12-4:30 pm, free, Colby College Campus, Mayflower Hill
- **Colby College Special Collections**, Miller Library, Mon-Fri 10 am-12 noon and 1-4 pm, free, current exhibit "The Power of Myth and Legend: The Irish Literary Revival," Colby College Campus, Mayflower Hill.
- Thomas College Art Gallery, 180 West River Rd.
- **Waterville Historical Society Redington Museum**, 1814 home, pharmacy, 872-9439, www.redingtonmuseum.org. Tue-Sat tours at 10 and 11 am, 1 and 2 pm, 62 Silver St.
- **Waterville Opera House**, 873-7000, www.operahouse.com, 93 Main St.
- **Farmers' Market**, Thu 2-6 pm, 680-2055, www.waterville-farmersmarket.org, The Concourse parking lot.

WAYNE

- **Farmers' Market**, 873-7000, <http://waynefarmersmarket.weekly.com>, Sat 9 am-noon, Town Green, next to Post Office, Main St.

WILTON

- **Wilton Farm & Home Museum**, 645-2091, 645-4578, www.wiltonmaine.org, Sat 1-4 pm or by appointment, Canal St.

WINTHROP

- **Norcross Park**, playground, picnic site, boat launch on Maranacook Lake, downtown.
- **Farmers' Market**, 395-4244, www.camarkets.com, Tue and Sat 9 am-1 pm, parking lot, downtown,

Additions/Updates/Corrections: Please contact Summertime in the Belgrades with any changes to this Directory.

ASSOCIATIONS/GROUPS

THE BELGRADES...

- **East Pond Association**, Smithfield/Oakland, www.eastpond.org
- **North Pond Association**, Smithfield/Rome, 152 Madison Avenue, Skowhegan, ME 04976, 474-8988, www.northpond.net
- **McGrath Pond/Salmon Lake Association (MP/SL)**, Belgrade/Oakland, RR 2, Box 2800, Belgrade, 04917, 465-3983, www.salmonlake.org
- **Great/Long Ponds: Belgrade Lakes Association (BLA)**, Belgrade/Rome/Mount Vernon, PO Box 551, 137 Main Street, Belgrade Lakes, 04918, 512-5150, www.belgradelake-sassociation.com
- **Friends of Messalonskee Lake Watershed**, Oakland/Belgrade/Sidney, PO Box 532, Oakland, 04963, 465-2888, www.snowpond.org
- **Belgrade Regional Conservation Alliance and BRCA Conservation Corps**, PO Box 250, 137 Main Street, Belgrade Lakes, 04918, 495-6039, www.belgradelakes.org
- **Belgrade Lakes Region Business Group (BLRBG)**, PO Box 596, Belgrade Lakes, 04918, 495-3700, www.belgrade-lakesmaine.com
- **Maine Lakes Resource Center/Docks to Doorways**, PO Box 431, 137 Main Street, Belgrade Lakes, 04918, 495-3617, 620-6029, www.mainelakesresourcecenter.org.

BEYOND...

- **Maine Congress of Lake Associations (COLA)**, PO Box 426, 137 Main Street, Belgrade, 04917, 1-855-463-2652, www.mainecola.org
- **Friends of the Cobbossee Watershed**, PO Box 5003, Augusta, 04332-5003, 621-4100, www.watershedfriends.com
- **Franklin County Soil & Water Conservation District**, 107 Park St, Farmington, 04938, 778-4279, www.franklin-cswcd.org
- **Kennebec County Soil & Water Conservation District**, Central Maine Commerce Center, 21 Enterprise Dr, Augusta, 04330, 622-7847, ext. 3, www.kcswcd.org
- **Kennebec Land Trust (KLT)**, PO Box 261, 134 Main St, Winthrop, 04364, 377-2848, www.tklt.org
- **Kennebec Messalonskee Trails**, PO Box 2388, Waterville, 04903, 873-6443, www.KMTrails.org
- **Kennebec River Rail Trail**, PO Box 2195, Augusta, 04338, 623-8162, www.krrt.org
- **30 Mile River Watershed Association (30 MRWA)**, Kimball Pond in Vienna to the Androscoggin River, 293-2181, www.30mileriver.org
- **Parker Pond Association**, Mount Vernon/Vienna. www.parkerpond.org
- **Central Maine chapter of the New England Mountain Bike Association (CeMeNEMBA)**, 1154 West Rd, Belgrade 04917, 441-6227, www.cemenemba.org

RIZZO MATTSON,
REALTORS®
COLDWELL BANKER
622-9000
Toll free
1-800-894-7979
www.rizzomattson.com
www.coldwellbanker.com

**J & M Logging, Inc.**
622-6353
Cut to order
in lengths from 14" to 23"
Green Certified Wood, Seasoned, & Ash
Cut, Split & Delivered
853 Civic Center Drive, Augusta, ME 04330

**BELGRADE BOAT STORAGE**
FREE LAKESIDE BOAT
PICKUP & DELIVERY
DARE TO COMPARE
Best Prices on Inside,
Outside Boat Storage,
Shrinkwrapping &
Winterization

Craig Pooler
Cell 207-314-3287 • Office 207-495-3421
Email: cpooler1@myfairpoint.net
www.BelgradeBoatStorage.com



— Calendar —

Thursday 7/5 through Saturday 7/7 – Moliere's "Tartuffe," 7:30 pm, 933-9999, Cumston Hall, The Theater at Monmouth.

Thursday 7/5 through Sunday 7/8 – "And The Winner Is," comedy, 474-7176, Lakewood Theater, Route 201, Madison.

Friday 7/6 and Saturday 7/7 - Friends of Messalonskee Lake Membership Drive, Friday starting on the west side opposite the Sidney Boat Launch and heading north along the lake; Saturday heading south, rain dates Saturday and Sunday, July 14 and 15, 465-0928, Messalonskee Lake, Oakland.

Friday 7/6 - Opening Celebration, two exhibits: "Hallowell through History," and "Model Citizens" exhibitions, on view through July 28, 5-8 pm, free and open to the public, 622-3813, The Harlow Gallery, 160 Water Street, Hallowell.

Friday 7/6 - New England Music Camp Student Recital, Chamber Music Program, open to the public, free of charge, everyone welcome, 7:30 pm, 465-3025, Alumni Hall, Route 23, Sidney.

Saturday 7/7 - Conservation Celebration of Meadow Brook Farm easement, sponsored by Kennebec Land Trust, strawberries, music by the Rogers Brothers Fiddle-Cello Duo, visits to see Meadow Brook farm animals, optional hikes, brief presentations by Don Marean, Chair, Land for Maine's Future Board; Walter Whitcomb, Commissioner Maine Department of Agriculture, Elaine and Berndt Graf, owners of Meadow Brook Farm, and KLT President Stan Eller, free, rain or shine, public welcome, 9-11 am, 377-2848, historic Baptist Church, Fayette.

Saturday 7/7 – Summer Art and Craft Fair, inside and out, vendors with many fine hand-crafted items, food, jewelry, baskets, lakeside setting, 9 am-2 pm, 293-2877, Mt. Vernon Community Center, downtown

Mount Vernon.

Saturday 7/7 - "Birds of Maine," Children's Program, 10 am, \$1, 238-4250, L.C. Bates Museum, Route 201, Hinckley.

Saturday 7/7 - "The Little Prince," Children's Show, adapted from the book by Antoine de Saint-Exupery, 1 pm, 933-9999, Cumston Hall, The Theater at Monmouth.

Saturday 7/7 - Lost Ladybug Project, come explore the world of our ladybug friends, find out why some of the native species are gone or disappearing from Maine and what species have replaced them, search with bug nets, 1 pm, 238-4250, L.C. Bates Museum, Route 201, Hinckley.

Saturday 7/7 - Opening Reception for Artworks, presented by Common Street Arts, food, drinks, and live Cuban-Indian fusion music, 5-8 pm, 16 Common Street, Waterville.

Saturday 7/7 - Baked Bean & Pulled Pork Supper, home cooked menu, take outs available, suggested donation \$6 per adult, \$4 per child ages 4-12, Family Deal \$20 for 2 adults and 3 or more children - immediate family only, to support the "Blessings in a Back Pack - Snack Pack" project, 4:30-6:30 pm, 465-7828, Fellowship Area, Oakland United Baptist Church, 45 Church Street, Oakland.

Saturday 7/7 - New England Music Camp POPS Concert, 7:30 pm, tickets: \$20 donation, 465-3025, Messalonskee Performing Arts Center, Oakland.

Saturday 7/7 - Donn Fendler, author of "Lost On A Mountain In Maine," and Ryan Cook, filmmaker of documentary "Finding Donn Fendler," talk, clip showing, book signing, free and open to the public, 7 pm, 495-3617, Maine Lakes Resource Center, Main Street, Route 27, Belgrade Lakes.

Sunday 7/8 through Tuesday 7/10 - 4-H Eastern State Tryouts Horse Show, free and open to the public, 474-3621, Skowhegan Fairgrounds, Madison Avenue, Route 201, Skowhegan.

Sunday 7/8 - 3rd Annual 1/2 Marathon, 5K Run-or-Walk, sponsored by PFBF CPAs, proceeds benefit Mid-Maine Homeless Shelter, race info and registration form available at www.pfbf.com or contact 873-1603, fee \$35, additional registration available Saturday, July 9, 4-6 pm and on race day at 7 am, race starts and ends at 46 FirstPark Drive, Oakland.

Sunday 7/8 - Kids Day! Featuring Jugglers and Clowns, Shane and Brian Michlan, Buckfield; also, face painting and a scavenger hunt, sponsored by the Belgrade Lakes Farmers' Market, free, 8 am-1 pm, 465-7058, Maine Lakes Resource Center, Main Street, Route 27, Belgrade Lakes Village.

Sunday 7/8 - Maine Majestix Field Hockey Club tryouts, U16 8-10 am, U19 10 am-12 noon, teams will travel to West Palm Beach, Florida over Thanksgiving weekend to compete against top clubs from around the United States, www.MaineMjestixFH.com, 873-2200, Colby College Turf, Colby College, Waterville.

Sunday 7/8 - Walking Tour of the Hallowell Waterfront, with historians Sam Webber and Arthur Moore, 10 am, Hallowell Boat Landing, Hallowell.

Sunday 7/8 - The Veayo Twins Band, 2-4 pm, Norcross Point, Winthrop.

Sunday 7/8 – New England Music Camp concert at "Bowl in the Pines," 3 pm, open to public, free of charge, 465-3025, Route 23, Sidney.

Sunday 7/8 - "Borderline Express," Coburn Park Concert Series, 5 pm, 474-0527, Philbrick Gazebo, Coburn Park, Water Street, Skowhegan.

Monday 7/9 - The Atlantic Music Festival, through August 5, classical music for promising young musicians from all over the world, 704-1311, Colby College, Waterville.

Monday 7/9 - 17th Annual Kennebec Valley

Chamber of Commerce Golf Tournament to benefit the Kennebec Leadership Institute, 12 noon shotgun start, team "scramble," registration \$110 per golfer, 623-4559, Augusta Country Club, Route 202, Manchester.

Monday 7/9 - Evening Geocaching, 4:45 pm, free and open to the public, 778-7495, Fitness and Recreation Center, University of Maine, Farmington.

Monday 7/9 - Old Crow Band Concert, 7-9 pm, Meetinghouse Park Gazebo, Main Street, downtown Farmington.

Tuesday 7/10 – Seminole Wind, Outdoor Music Concert, free, 11:30 am-1 pm, Meetinghouse Park Gazebo, downtown Farmington.

Tuesday 7/10 - Flat Water Canoe and Kayak, all ability levels, Clearwater Lake, \$5 for kayak rental if needed, 5:15 pm, 778-7495, Fitness and Recreation Center, University of Maine, Farmington.

Tuesday 7/10 – Marcia Gallagher Ensemble, Rock on the River Concert, 7-8:30 pm, boardwalk on the Kennebec River, Hallowell.

Wednesday 7/11 - Bats presentation with Jerry Schneider, bring a light, solid-colored tee shirt or pillow case for printing or \$4 for a white tee shirt, 9:30 am, free and open to the public, 495-3508, Belgrade Public Library, Belgrade Community Center for All Seasons, Route 27, Belgrade.

Wednesday 7/11 – Capturing animals on paper! Art Program, 1 pm, 238-4250, L.C. Bates Museum, Route 201, Hinckley.

Wednesday 7/11 – Judy Pancoast, interactive and musical programs, part of "Dream Big - Read" Summer Reading Program, 2 pm, 465-7533, 465-9554, Oakland Public Library, Church Street, Oakland.

Wednesday 7/11 – Public supper, turkey pie, 5 pm 'til gone, Fairview Grange, Route 8, Smithfield.

MAINE-ly ELDER CARE

"Caring for the ones who cared for us"



In - Home Nursing • Personal Care Services • Homemakers
• Emergency Response Systems • Transportation Services

STATE REGISTERED PERSONAL CARE
AND HOMEMAKER AGENCY

465-3249

28 Center St., Oakland, Me 04963

www.Maine-lyElderCare.com

denise@Maine-lyElderCare.com

DAY'S REAL ESTATE

"The Waterfront Specialists" 207-495-3111

262 Augusta Road (Route 27) • Belgrade Lakes, Maine 04918 • 888-495-3111

Web: www.daysrealestate.com • e-mail: daysrealestate@roadrunner.com



MCGRATH POND~ Lovely setting w/views of the lake. Cottage has 3 BR, lg living area, shed & 138' +/- shorefront.. Quiet dead end road. Great summer cottage! **\$168,000**



GREAT POND~ Classic 1920's 4 BR cottage with screen porch, west exposure & 100' +/- shorefront. Enjoy summer with family & friends. **\$309,000**



LONG POND ACCESS~ 4-season, 3BR cottage with deeded waterfront access a 5 minute walk away. Near Belgrade Lakes Village. **\$150,000**



Wednesday 7/11 - Esker Hike, led by Mel Croft, president of the Belgrade Regional Conservation Alliance, 5:30 pm, 495-6039, meet at the Belgrade Community Center for All Seasons, Route 27, Belgrade Lakes.

Wednesday 7/11 - Waterfront Wednesday, Sunset Concert Series, free event for the public, 6 pm, Waterfront Park, Augusta.

Wednesday 7/11 – Moliere’s “Tartuffe,” 7:30 pm, 933-9999, The Theater at Monmouth.

Wednesday 7/11 - Dance Concert, Camp Bearnstow, free, 7:30 pm, 293-2280, Parker Pond, Mount Vernon.

Wednesday 7/11 through Saturday 7/14 - "And The Winner Is," comedy, 474-7176, Lakewood Theater, Route 201, Madison.

Wednesday 7/11 - Faculty Recital, 8 pm, 465-3025, Alumni Hall, New England Music Camp, Route 23, Sidney.

Thursday 7/12 - 4th Annual Golf Tournament to benefit the Belgrade Public Library, prizes, cocktail reception, live and silent auctions, 12 pm, scramble format, 495-2101, Belgrade Lakes Golf Course, Belgrade Lakes.

Thursday 7/12 - Friends and Neighbors

Luncheon, free public lunch, salads and sandwiches, desserts, 11:30 am-1 pm, Union Church, Main Street, Route 27, Belgrade Lakes.

Thursday 7/12 - History Program, discover the early 1900s in Maine through clothing, tools, toys, school objects and printing, 1 pm, 238-4250, L.C. Bates Museum, Route 201, Hinckley.

Thursday 7/12 - Introduction to Mountain Biking, \$5, helmet required, helmets and bikes available for rent, 4:45 pm, 778-7495, Health and Fitness Center, University of Maine, Farmington.

Thursday 7/12 - Cribbage Tournament, prizes and refreshments, 6:30-9:30 pm, suggested donation \$5, 465-7058, Belgrade Lakes Farmers' Market, Maine Lakes Resource Center, Main Street, Route 27, Belgrade Lakes.

Thursday 7/12 - ArtTalk for July, in celebration of Hallowell's 250th anniversary four individuals will share their own unique personal histories of Hallowell: Katy Perry remembers how she got the "Hallowell Bug," Ellen Gibson recalls an adventure on Litchfield Road Hill in a soap box derby, Charles Dwyer shares his "coming home" story, and Sam Shain tells tales of growing

Friends of Belgrade Library 4th Annual Golf Tournament



The 4th Annual Golf Tournament to benefit the Belgrade Public Library will be held on Thursday, July 12 at the Belgrade Lakes Golf Course. Sponsored by the Friends of the Belgrade Public Library, the Tournament will have a 12 pm tee off time using a scramble format. There will be a putting contest going on throughout the tournament.

The tournament will be followed by a cocktail reception

and awards ceremony, with prizes for the longest drive, closest to the pin, hole in one (a car!), the lowest team score, the most golf balls driven into the water, the most lost on the course, and the most dangerous team hits.

At the reception there will be silent and live auctions for items including 4 box seats to a Red Sox game on August 5, a float plane ride, a pontoon boat trip for 8 and many more.

The money from this fundraiser will go towards the Friends renovation project for a larger, centrally-located library for the community of Belgrade. The Friends appreciate all of the community support they have received and are receiving.

To play in the tournament or attend the reception contact jpjohnson027@roadrunner.com or 495-2101.

up in the Hallowell community, 7 pm, 622-3813, The Harlow Gallery, 160 Water Street, Hallowell.

Thursday 7/12 through Sunday 7/15 – "Two Gentlemen of Verona," by William Shakespeare, 7:30 pm, 933-9999, The Theater at Monmouth.

Theater at Monmouth

Two Gentlemen of Verona

by William Shakespeare
directed by Catherine Weidner

July 12 - August 17
Tickets \$10 - \$28

Photo by Aaron Flacke

207.933.9999 | www.theateratmonmouth.org

C'mon ... think outside the bottle and
GET YOUR SAUCE ON!
GOURMET BBQ, GRILL & DIPPING SAUCES

festive foods, inc.
NEW SHARON, MAINE
www.topofthehillgrillonline.com

39th Annual
2012 Daytime
Emmy Awards
Gift Bag Participant

DAYTIME EMMY AWARDS
SATURDAY, JAN. 25, 2012
Savoy Hotel, New York City

Go ahead and choose your favorites! They're all made in small batches to ensure quality and freshness right here in our kitchen. They're even bottled and labeled by hand here, too! Try them on your favorite BBQ ~ our own smoked, pulled pork or smoked, pulled chicken. Maybe you love tender and tasty smoked beef brisket! And who can resist hand rubbed and smoked ribs? And that's not all we're cookin'! We love rattlin' the pots 'n pans ... stop in for breakfast, lunch or dinner - try our homemade corned beef hash, biscuits, BBQ beans, luscious cornbread, juicy steak burgers, fresh hot wings (with our own homemade bleu cheese dressing!), the Best Prime Rib around every Friday night! **and more** - it's all real food ...

There's nothin' like 'Making Your Life Tasty' and 'Gettin' Your Sauce On' at ...

We're Easy to find!

Routes 2 & 27 in New Sharon

'Look for the Big Pig'!

Nichols TOP OF THE HILL GRILL & BBQ
We believe in "Making Life Tasty!"

We Also Offer Catering Delivered!

Road Hog Catering

Let Road Hog Catering Make Your Event Special!

Like us on facebook! Nichols Top of the Hill Grill & BBQ

207.779.0973



The 1830 House on Long Pond

Country Store,
Handmade Gifts,
Custom Home and Camp Signs
Rhonda Barnes Adlam

134 Main Street
Belgrade Lakes Village
495-3277

www.the1830houseonlongpond.com

Boat – Automobile – RV Enclosed Storage

Winter Storage for Summer Vehicles

Reasonable Rates! Boats stored on your trailer!
Real Protection from Winter Storms and Sun Damage
Pontoon Boats and Large RV's – **No Problem!**

www.belgradelakesmarine.com



New customers reserve now – limited openings available.

Belgrade Lakes Marine & Storage, Inc.

366 Augusta Road (Route 27) Belgrade **207-495-2378**

COMPLETE Denture Center

FREE CONSULTATIONS Call for Appointment Today!
Full Dentures • Partial Dentures • Same Day Repairs/Relines • Lab on Premises

PAUL LALICATA, L.D.

107 Bridge St., West Farmington
Call 860-2781

Email: completedenturecenter@gmail.com

MOST INSURANCES/MAINE CARE
ACCEPTED

— Kennebec Corridor News & Notes —

South Along the Kennebec: Friends of Merrymeeting Bay Offer Summer Trips

Walks and paddles, plants and animals, the 2012 Friends of Merrymeeting Bay Summer Outside schedule is an excellent way to explore the Kennebec River area southward to the Atlantic.

2012 FOMB Summer Outside

- **July 7:** **Palmer Pond Paddle with Ed Friedman,**
Dresden, 9-11 am, contact Ed 666-3372
- **July 7:** **Second Chance Wildlife Rehabilitators with Dawn Brown,**
co-sponsored with Maine Department of Inland Fisheries and Wildlife,
Swan Island, \$8, 5:30 pm, Kendall Marden, 547-5322
- **July 18:** **Learn about Peregrine Falcons with Master Falconer, Larry Barnes,**
co-sponsored with Maine Department of Inland Fisheries and Wildlife,
Swan Island, \$8, 5:30 pm, Kendall Marden, 547-5322
- **July 21:** **Sheep Dog Demo and Grass Farm Tour with Joe Grady, Two Coves Farm,**
Harpwell, 9 am-noon, Jeff DeRosa, 371-8099
- **July 28:** **2012 Richmond Days with Swan Island tours all day,**
co-sponsored with Maine Department of Inland Fisheries and Wildlife, \$5, Kendall
Marden, 547-5322
- **August 4:** **Sturgeon and Bird Island Paddle with Anne Hammond,**
Butler Cove, Bath, 2-5:30 pm, Anne 442-0375
- **August 11:** **Photography Above & Below the Bay with Heather Perry,**
co-sponsored with Merrymeeting Arts Center, Bowdoinham, 11 am,
Jeff DeRosa 371-8099
- **August 11:** **Waterfront Party hosted by Ducks Unlimited,**
Bowdoinham Waterfront, morning, Jeff DeRosa 371-8099
- **August 18:** **Surficial Geology of Merrymeeting Bay with Tom Weddle,**
Brunswick, 9 am-1 pm, Jeff 371-8099
- **August 26:** **Rare Mud Plant Walk with Andy Cutko, Choice View Farm,**
Dresden, 2-4 pm, Andy 666-3162
- **September 14-16:** **Celebrate Bowdoinham 250!, event hosted by the town of Bowdoinham,**
various activities, Nicole Briand 666-5531
- **September 22:** **Swan Island Outing with Jay Robbins, Richmond, \$5, 9 am-1 pm, Jay 737-2239**

Preregistration is required. Unless stated otherwise, programs are free. For more information call 371-8099. Friends of Merrymeeting Bay are based in Richmond, Maine.



ST. MICHAEL SCHOOL Augusta

Currently Accepting Enrollments for Pre-K Through Grade 8

For information, call the Office at 623-3401. Visit our website at www.smsmaine.org. St. Michael School provides a competitive, affordable, high quality education. We welcome both Catholic and non-Catholic students.

Where Futures Begin

WE OFFER:

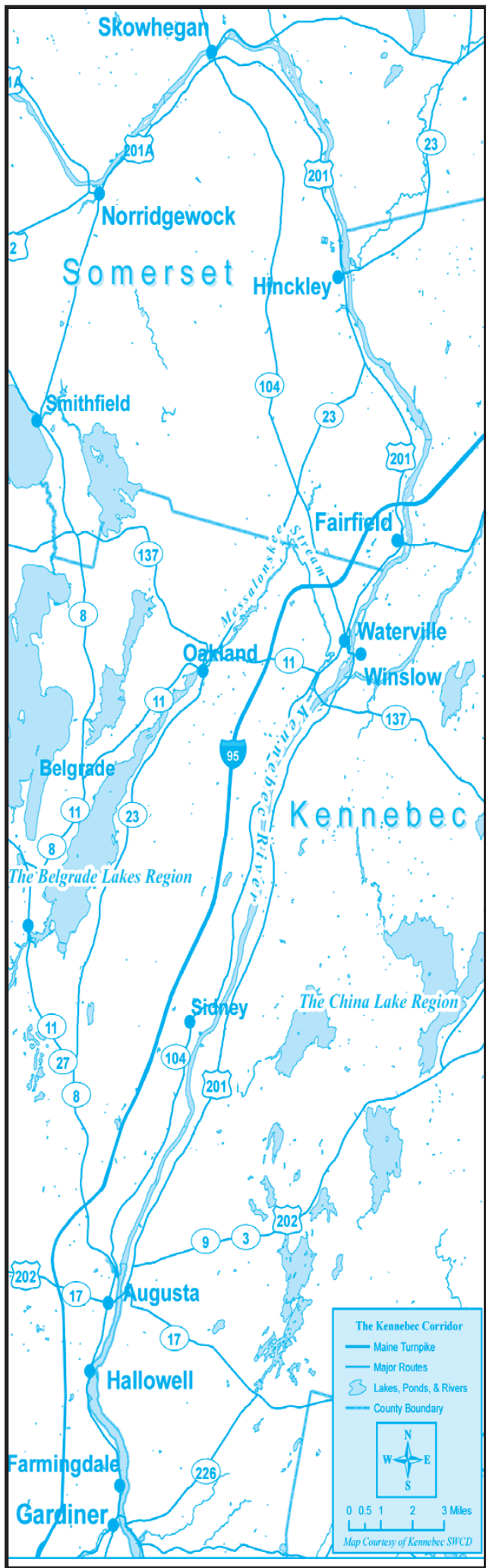
- Maine State Certified faculty and staff
- Music, Chorus, Art and Physical Education
- Title I Reading; Speech services
- Full day Kindergarten and full day Pre-K
- Excellent lunch and extended day program
- Study of French for Grades PK-8
- Intramural sports and healthy activities
- A strong athletic program
- Science Fairs and environmental projects
- Children's Stage Adventure
- Adventure Club for Grades 6-8
- Community service projects
- Civic Oration, Math teams, DAR Essay contest, Spelling and Geography Bees, more.

Rachel Carson's "Sense of Wonder"



In celebration of the 50th anniversary of Rachel Carson's Silent Spring, the Friends of Hog Island presents Kaiulani Lee in a one-woman tour-de-force performance of Rachel Carson's Sense of Wonder, a two-act drama, on July 28, 2012 at the historic Lincoln

Theater in downtown Damariscotta at 7 p.m. For more information or reservations, please e-mail Friends of Hog Island at president@fohi.org.



—Katy's Column—

A Helpful "Outing" for Kids

You might find you have a bit of extra cash stashed away – and wonder how you might use it to make YOU feel better – and additionally – help others. Let me share a story that might open a door.

In late May, 73 sixth grade students from Hall-Dale middle school in Hallowell spent three days at the Chewonki Outdoor Classroom for Schools. Not only the children but several teachers were there – at no cost to any of them because, through the generosity of a grant from someone who realized the need young people have today to see the natural world – they had a free ride.

It was my great pleasure to call on Kate McKee at her home the day after the tour ended. Kate, one of the sixth grade students, truly enjoyed the trip.

"We slept in our own sleeping bags in tents" she told me, "and we had a lot of fun."

"What was the most exciting part of the three days for you, Kate?" I inquired.

"Oh, hiking through the woods around the shore – which we did a lot, was wonderful. I think all of us liked that, and we learned a lot about the area, too!"

Kate remarked that they were asked to fill water tubs from the seashore – and the area was very muddy, and cold – but each did as they were asked to do. She also mentioned her teacher, Andria Freed, who seemed to enjoy the outing as much as the class. That statement prompted me to contact the teacher!

As we finished our visit Andria said, "I feel it was an incredibly valuable experience for all the students. There was a genuine awakening to anyone who sleeps – almost in the woods – and hears the bird calls, trees swishing in the wind and tidal waves rushing here and there. The kids gained a lot – and believe me, so did I!"

A comment that certainly justifies that three day, two night sojourn on the Maine Coast with the wooded area free of cell phones and all electronic devices was just what Kate McKee call it: "Beautiful and inspiring!"

To learn more about "A Totally UNIQUE Experience" at Chewonki, reach them at: 485 Chewonki Neck, Wiscasset, Maine 04578-4822, www.chewonki.org, 207-882-7323.

Katy Perry is an author, and news commentator who knows, loves, and respects Maine.

The Artisan's Barn



163 North Road
Readfield, Maine 04355
207-685-9787
www.theartisansbarn.com

Thurs/Fri 11 to 5 PM
Sat 10 AM to 4 PM
Open May–December

Just here for
the summer,
or new to the area?
Looking for a vet?
Maybe we can help



Lakeside
VETERINARY
CLINIC

www.lakevets.com

Hours 7:30 to 5:00
Monday thru Friday
8:00 to 12:00 Saturday

Dr. Eleanor C. Sabean
Dr. Jennie Marvelle

88 Libby Hill Rd • Oakland, Maine 04963

(207) 465-PETS (7387) (207) 465-VETS (8387)

Call or visit us
at the head of
Snow Pond in
Oakland (Rt. 23)!

LakeHouse™

Design • Build
Renovations



Traditional Style Camps,
Cottages and Lakefront Homes
207.242.3663

www.lakehousedesignbuild.com

It's Time To Plant!

Our greenhouses are overflowing!

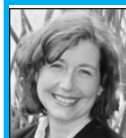


www.longfellowgreenhouses.com

Open 7 Days a Week
81 Puddledock Rd
Manchester
622-5965



Your First Choice In Window Treatments



Lori Laroche
215-7872
lori@blindtime.com

Your local independent, Shop At Home,
Window Treatment Service! Invite one of our
experienced design consultants to your home
or office to assist you on your next project.
We'll help you make the right choice for your
budget and install them too!



Joyce Schoenthaler
441-1837
joyce@blindtime.com

Specials through June 30

Free "Top Down - Bottom Up" option on Comfortex Shades
25% OFF ALL WOOD, FAUX, AND ALUMINUM
BLINDS INCLUDING 1", 2" & 2.5"



Visit us at
www.blindtime.com
621-9832
jerry@blindtime.com

KOZY COTTAGE

One of a kind finds like grandma used to have!
A unique mix of old and new. Always a great selection
of Furniture glassware and so much more.

13 Church St, Oakland, ME

Wed-Fri 10-5, Sat 10-4

207-465-0959 • kozycove@yahoo.com

Call Us For Boat Tops, Covers & Interiors

Keep You and
Your Boat Clean
& Dry



Pontoon Boats Too!

WATERVILLE UPHOLSTERY & CANVAS
(Waterville Auto Top)

1 1/2 Miles West Exit 127, I-95, KMD, Oakland
465-7847







Lynch

LANDSCAPING INC.
FOR THOSE WHO DESIRE QUALITY

207-474-2420

Design - Install - Maintain

Designing landscapes to beautify your property and protect your natural resource - Installing landscapes in a manner that promotes sustainability and prevents erosion - Maintaining landscapes so your investment lasts a lifetime



Licensed, Certified & Accredited
For All Your Landscaping Needs

www.lynchlandscaping.com



Belgrade Vacation Rentals

CAMP & COTTAGE RENTALS
We've moved to Belgrade Lakes!

Contact Us Today! **(207) 495-4011**
www.BelgradeVacationRentals.com

Own A Property? We Will Rent it for You!

Showing the Best of World and American Cinema

Call our 24-hour movie hot-line or check our website for film titles and times



Waterville ★ 873-6526
www.RailroadSquareCinema.com

Home of the Maine International Film Festival (July 13 - 22)
www.MIFF.org

- Sunblocks •Weatherproofs •Resists Gas & Oil •Beautifies
- Low Maintenance
- Saves Money



If your drive way is 6 months old or it's been 2 years since your last seal coat,
YOU NEED OUR SERVICES

Normile Sealcoating

1 Year Guarantee ~ Fully Insured ~ Free Estimates
Call 207-332-4131
SERVING CENTRAL MAINE FOR 13 SEASONS

LET HOULE'S TURN A SUMMER HOT SPOT INTO A COOL HANGOUT.



A Mitsubishi Electric Ductless Air Conditioner will keep your problem room cool in the summer and energy-efficient all year-round. And because there's no need for ductwork, we can install it for you in hours, not days — no muss, no fuss.
Let us show you how that hot spot can become your favorite space. Call today.

Houle's Plumbing, Heating, & Air Conditioning

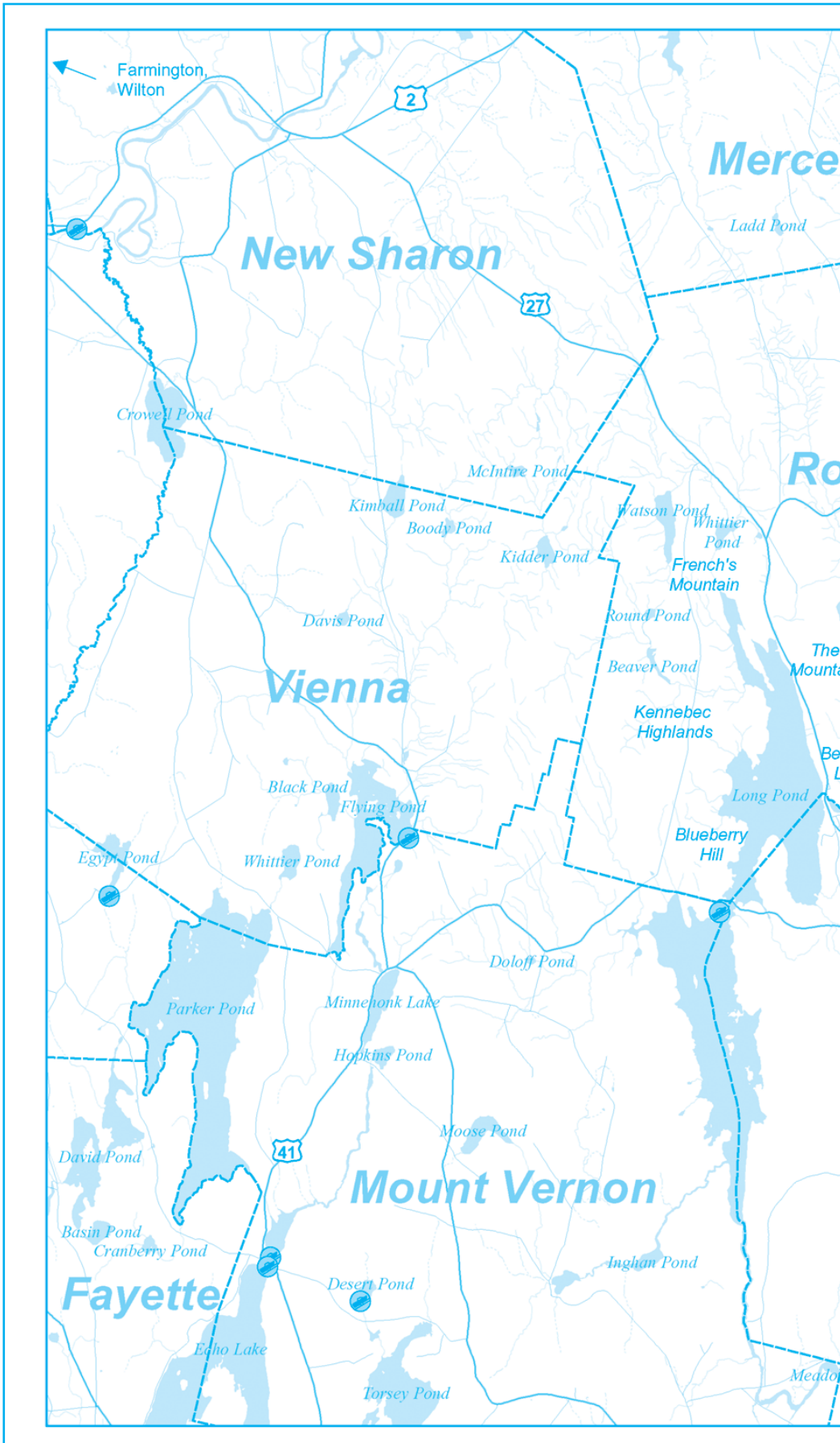
AMERICA'S #1 SELLING BRAND OF DUCTLESS
www.mitsubishicomfort.com



MITSUBISHI ELECTRIC
COOLING & HEATING
Live Better

**FINANCING AVAILABLE
CALL US AT 872-6762**

Houle's Plumbing, Heating & Air Conditioning
19 North Street, Waterville, ME 04901
SEE US FOR ALL YOUR A/C, PLUMBING & HEATING NEEDS
www.houlesphac.com



MAINE



EYE CARE ASSOCIATES

"Serving Maine Since 1922"

- Comprehensive Eye Exams
- Eyewear Center
- State of the art Cataract Surgery
- Glaucoma
- Retinal Diseases
- Laser Surgery
- Oculoplastic Diseases

• Ambulatory Surgery Center



James R. Putnam, M.D. Steve R. Witkin, M.D. Michael G. Garvey, M.D.



Helen Bell-Neceveski, O.D. Lorie Lepley Parks, O.D.

325A Kennedy Memorial Drive **873-2731**
Waterville, Maine 04901 **(800) 660-3403**
www.MaineEyeCare.com

Riverside Farm

Restaurant & Wine Market

291 Fairfield Street, Oakland, Maine 04963
465-4439 • www.riversidefarmmarket.com

Restaurant		Wine Market	
Lunch:	Tuesday-Saturday 11-3	Tuesday-Friday	10-6
Dinner:	Thursday-Saturday 5:30-8:30	Saturday	10-4
Brunch:	Sunday 10-2		

Gypsy jazz every Sunday from 11:00 until 2:00 with Mes Amis





RIVERFRONT

BARBEQUE & GRILLE

WORLD CLASS BARBEQUE

SEAFOOD, PASTA, & VEGETARIAN ENTREES

207.622.8899

300 WATER STREET, AUGUSTA, MAINE

WWW.RIVERFRONTBBQ.COM

FULL SERVICE DINING * CATERING * BULK TAKE OUT



The Gin Mill

Augusta, Maine

Augusta's finest upscale lounge featuring fine wine, martinis, and over 100 brands of beer from Germany to Japan

Thursday thru Saturday 3:00pm until Midnight,

Above the Riverfront Barbeque & Grille at 300 Water Street

207.620.9200

Lakepoint

REAL ESTATE

"Put The Team to Work For You" **207.495.3700**

GAIL RIZZO 207-242-8119 gail@gailrizzo.com

PAT DONAHUE 207-730-2331 pldcamp@msn.com



BELGRADE ~ GREAT POND, HOYT ISLAND ~ 2100' shared waterfront. Vintage 3 BR cottage beautifully renovated. Open KIT/DR/LR w/ cathedral ceiling, expansive screened porch offering exceptional lake views. Shoremaster dock w/ separate stone boat slip. Furnished. (1055506) **\$299,000**



BELGRADE ~ LONG POND ~ Sandy Cove, waterside cottage, 160' of lake frontage, attached bunkhouse. Open floor plan, cathedral ceiling living/dining area. Wrap around deck, wonderful sunsets. (1054543) **\$325,000**

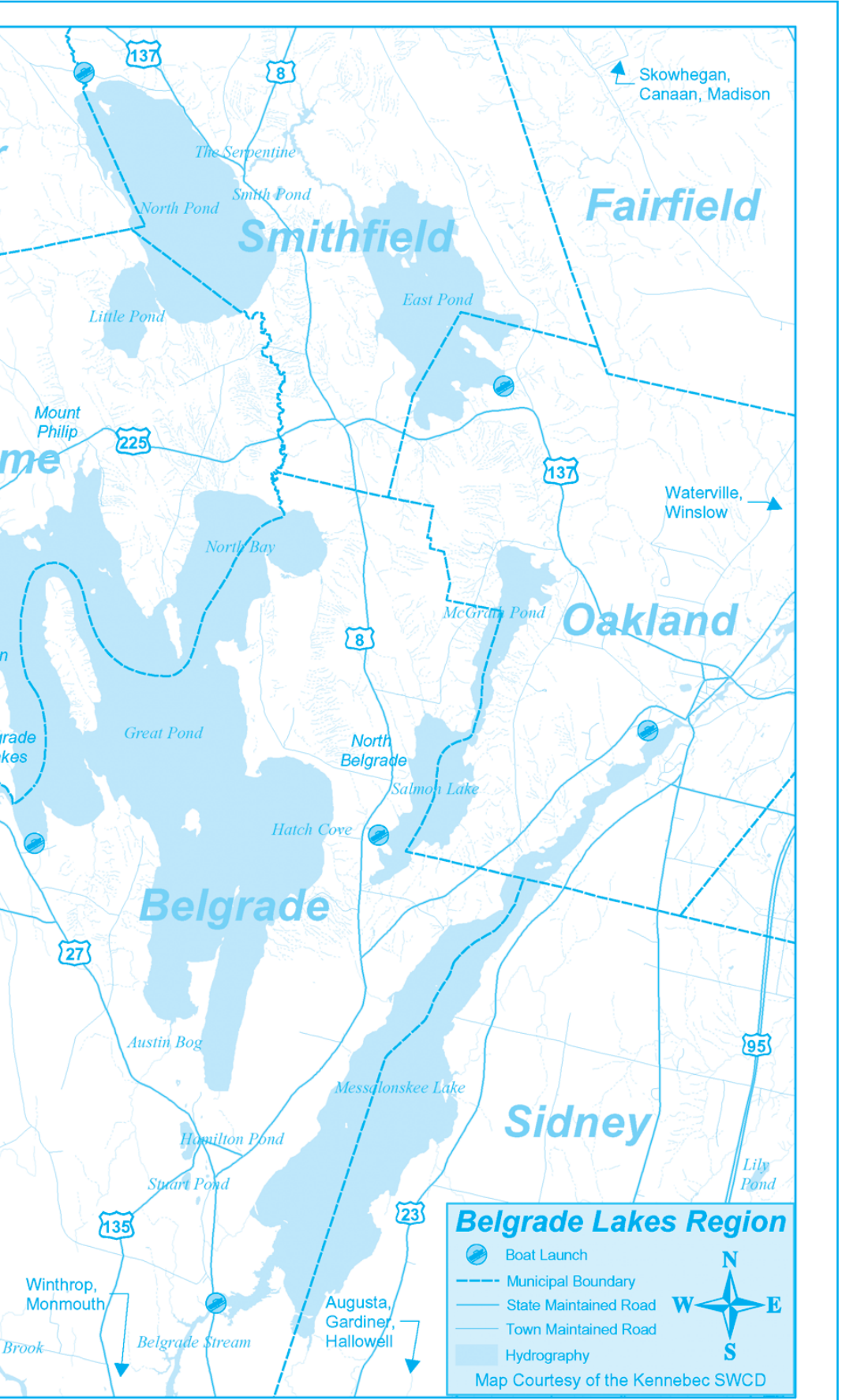


BELGRADE ~ GREAT POND ~ Classic Cottage with 2 BR plus loft, open concept for living room and kitchen, sandy swim area. Sunsets are outstanding! (1050968) **\$278,500**



ROME ~ 4 BR, 2.5 BA, year-round home w/ big vistas of Great Pond. Custom KIT, LR w/ atrium to deck, family room w/ walkout to back yard, den, row to sandy beach on Great Pond w/ private dock. Well landscaped, separate 2 car garage. (943837) **\$259,000**

221 Main Street, Belgrade Lakes, Maine 04918



21 Bay Street Winslow

LOBSTER TRAP and STEAKHOUSE

872-0529

11 AM – 9 PM

OFF RT 95 TAKE WATerville/OAKLAND EXIT 127 FOLLOW RT 137 BUSINESS TO WINSLOW TAKE RIGHT AFTER THE BRIDGE WE'RE ON THE RIGHT

Savor the taste of Maine while relaxing on our deck overlooking the Kennebec River!

Here's A Sampling From Our Menu

Our "Famous" Lobster Stew

Jumbo Lobsters • Locally Hand-Cut Steaks • Fresh Crabmeat Rolls

Shrimp Cocktail • Lobster Roll • Fried Clams • Fresh Scallops & Steamed Clams • Chef's Specialties Featured Daily

Surf & Turf Specials • Maine Crafted Ales

www.all-season.com



Standing Seam Metal Roofing • Metal Shingles • Asphalt Shingles

Garages • Siding • Windows • Decks • Home Additions

Call 1-800-464-3039



Great Pond Marina

Tubes, Skis, Kneeboards, Wakeboards

In-Stock

Open Mon-Sun 8-5

Don't Be Left Standing on the Dock




Day's Store

182 Main Street PO Box 277 Belgrade Lakes, ME 04918 207-495-2205

FRESH MEATS • LOBSTERS • BAKERY •

PIZZAS • SANDWICHES • ATM • AGENCY LIQUOR

LAKESIDE SCOOPS Featuring  **CONES SUNDAES**

On Long Pond behind Day's Store

Clark Marine

Glastron GT 160 Series, Closed Bow and Bow Rider Boats



207-622-7011

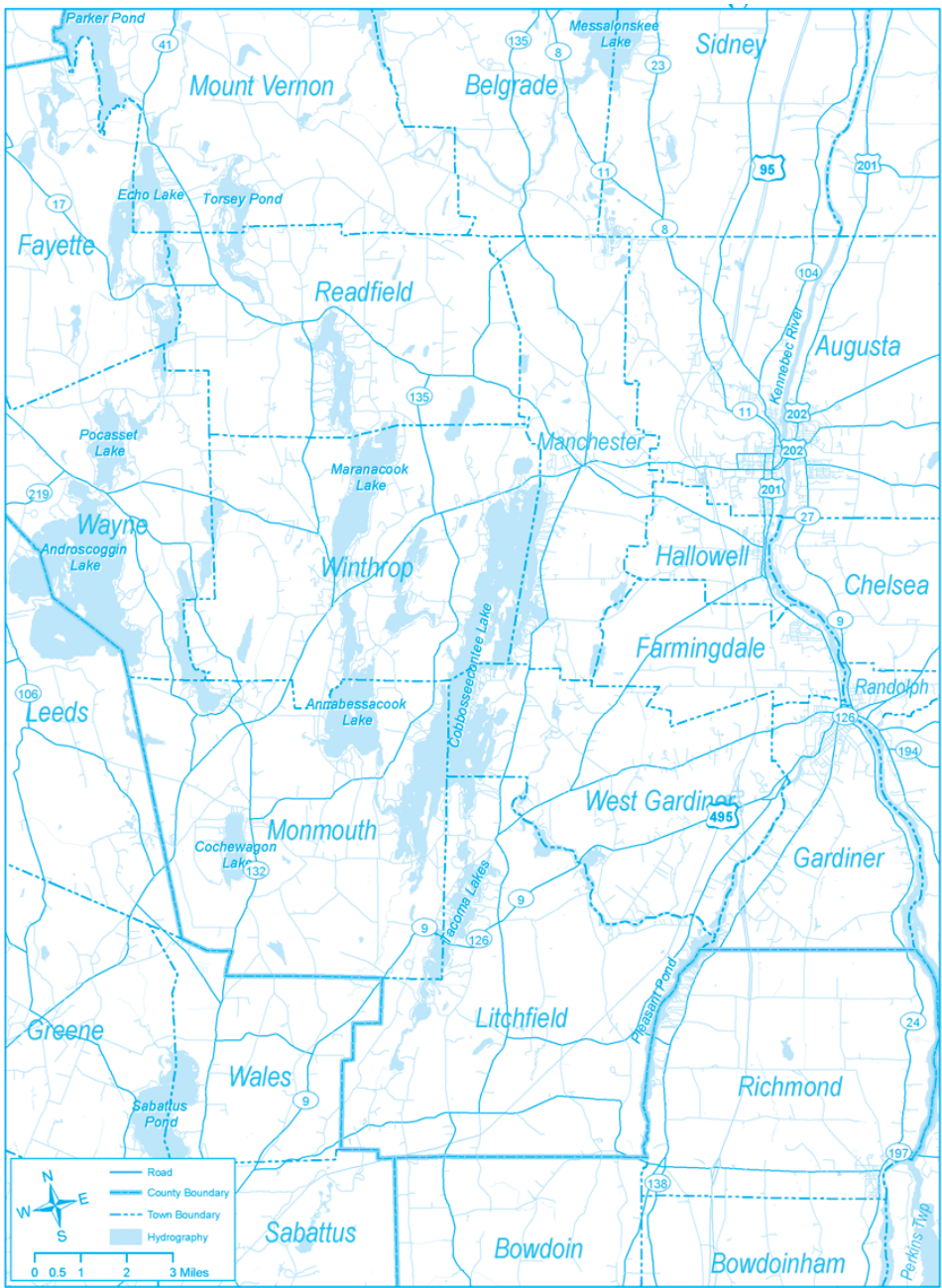
57 Puddledock Road, Manchester

funonthewaterstartshere.com





Cobbossee Watershed



Cobbossee Corner

The Theater At Monmouth: Previews and Openings

July is the month at Monmouth when each week a new play opens; August is when each week presents a performance of every play. The four plays scheduled to open in July include: July 6 - Tartuffe by Moliere; July 13 - Two Gentlemen of Verona by William Shakespeare; July 20 - The Glass Menagerie by Tennessee Williams; and July 27 - King Henry IV, Part 1 by William Shakespeare.

Other special opportunities through The Theater at Monmouth include group rates, Dinner with Shakespeare and the 2012 Silent Auction. Group rates, available for parties of ten or more, include: best available seats, pre or post show discussions, tours of Cumston Hall, and assistance arranging catering or other details.

Dinner with Shakespeare is a dinner and show package with Joyce's in Hallowell available from July 7 to August 18. The \$100 package includes tickets for two and a three-course pre-theatre menu. Reservations are required a week in advance by calling 933-9999.

The Annual Silent Auction offers scores of unique items including clothing, jewelry, getaways, artwork and tickets to events throughout Maine and New England. For more information call 933-9999 or visit www.theateratmonmouth.org



Common Street Arts presents ARTWORKS



Reclining Red Pear, ©2012 Sandy Dunn

July 7 – August 4, 2012

Opening Reception:

Saturday July 7, 2012

5:00 - 8:00 pm

Common Street Arts

16 Common Street • Waterville, ME
Gallery Hours: Wednesday – Saturday • 12 – 6

Join us for the inaugural show in downtown Waterville's new collaborative arts space. As a benefit show and an invitation to all to visit our stunning new space, ARTworks will feature small works from a diversity of local, regional and national artists all for sale for less than \$100. Come enjoy the art, experience the space, and learn more about the Common Street Arts project.

Food, drinks, and live Cuban-Indian fusion music!

All are Welcome!



The Friends Mil-Foiler Program



From post cards in 2003 to a watershed-wide initiative today, the Mil-Foiler Program is designed to prevent the spread or introduction of Invasive Aquatic Plants like milfoil and hydrilla into the Cobbossee Watershed.

Although Maine has largely been spared the devastating effects seen in other states, some of the "Eleven Most Unwanted" Invasive Aquatic Plants (IAPs) are now in 33 Maine water bodies, including variable-leaf milfoil in the Cobbossee Watershed's own Pleasant Pond, Purgatory and Cobbossee Streams.

Two of the most aggressive IAPs are in Maine waters. Eurasian Water Milfoil was discovered in a Scarborough gravel quarry in the fall of 2006 and Hydrilla was discovered in Pickerel Pond in Limerick in the fall of 2002. (Eurasian Milfoil has also been discovered and treated in Salmon Lake in the Belgrade chain in 2009.)

In 2003, Friends of the Cobbossee Watershed mailed 5 post cards over an 8-week period to 15,000 Cobbossee Watershed residents. The post cards, produced and subsidized by J.S. McCarthy printing, accomplished the Friends' objective. Awareness was raised dramatically by

the shocking photographs of IAPs in other states where they have taken over.

Today, the Mil-Foiler Program consists of a coordinated, 3-tiered approach for the entire 217-square mile Cobbossee Watershed and is designed to keep existing infestations from entering non-infested waters while limiting further impact where they already exist.

For more information visit www.watershed-friends.com or call 621-4100.



CSS Cayer

Security Services, Inc.

RESIDENTIAL COMMERCIAL FINANCIAL
Protect what matters most.

CCTV
Fire Alarms
Burglary Alarms
Alarm Monitoring
Low Temperature Alarms
Emergency Response Units
(For the Elderly/Disabled)

CALL TODAY

To secure your home, camp, or business.

453-9177

(For the Elderly/Disabled) 208 College Avenue, Waterville

www.cayersecurity.com

COLDWELL BANKER
Thomas Agency

377-2121
75 Main Street,
Winthrop ME 04364



NEW LISTING
Awesome waterfront property inside and out, totally renovated, like new condition, fully furnished and appliances, beautiful lake sunsets, sandy waterfront just a few feet away. 4 section aluminum, dock, boat mooring, year round access, a true value in this market! **\$195,000**



WATERFRONT
Beautiful, 4 season, prime location near the water's edge. 3+ bedroom, 2 bath, 3 car garage, boat mooring, 500+ ft of shared frontage just 100' away! Private sandy beach, swim, boat, fish, snowmobile to anywhere. Second floor master bedroom suite overlooking the water. Lots of memories to be made! **\$249,000**



Meticulous condition throughout with 4 bdrms and fireplaced Rec. rm. Well landscaped with great privacy in the backyard. Awesome land lot w/ fields for gardening or even big enough for a "Little Fenway Park" Appliances kitchen and oil heat. Move in condition! **\$129,000**

www.coldwellbankerthomas.com info@coldwellbankerthomas.com

Friends of the Cobbossee Watershed



BE A MIL-FOILER

**THIRTY-SIX
GREAT REASONS**
MAINE'S ONLY 36-HOLE
PUBLIC GOLF COURSE
THE LARGEST GOLF FACILITY
NORTH OF BOSTON

Championship Golf, Full Pro Shop,
Driving Range, & Modern Clubhouse.
Groups Welcome

Natanis

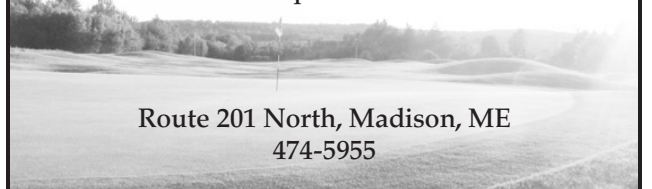
GOLF COURSE



Webber Pond Road,
Vassalboro, ME • 207-622-3561

LAKEWOOD GOLF COURSE

Consider playing Lakewood,
a Natanis partner course.



Route 201 North, Madison, ME
474-5955



Garden & Grill

357A Main Street, Winthrop
377-8877

Tuesday	Wednesday	Thursday	Fri. & Sat.
Two-fer Menu	Pizza Night	Surf & Turf Night	Prime Rib & Specials

Hours: Tues.-Thurs. 11:30-8:30, Fri. & Sat. 11:30-9
Banquet facility for up to 30



— Upcoming —

JULY

- The 15th Annual Maine International Film Festival is scheduled for July 13-22 in Waterville at the Railroad Square Cinema and the Waterville Opera House. www.miff.org, 861-8138
- A reading and book signing by internationally acclaimed biologist and nature writer, Bernd Heinrich, on "Life Everlasting, The Animal Way of Death," will be held on Thursday, July 19 at 7 pm at DDG Booksellers in Farmington. 778-3454
- The 33rd Old Hallowell Day celebration is scheduled for Saturday, July 21, with events all day: sales, art, food, music, big parade, much more.
- On Friday, July 20, "Natural Wonders of the Northeast Coast" will be presented by John Holod at 2 and 7 pm at the Araxine Wilkins Sawyer Memorial in Greene. Free admission. 946-5311
- The Fayette Historical Society will have Open House July 21, 10 am-2 pm. 685-3655
- On Wednesday, July 25, the Norridgewock Historical Society will host a presentation by guest speaker, Heather Ackley, on Education in Maine. 634-5032

- A classical music concert to benefit the Union Church "Love of Neighbor" Endowment Fund, featuring Susan Poliacik on cello, Graybert Beacham on violin and Krysia Tripp on flute will be held on Thursday, July 26 at 7 pm. 495-3599
- On Friday, July 27, two top New England bluegrass bands will be featured at a concert in Belgrade Lakes at the Center for All Seasons: The Sandy River Ramblers and the Mid-nite Plowboys. 397-2241
- Waterville's 43rd Annual Intown Arts Fest will be held on Saturday, July 28 with over 100 artists set up along Main Street - all price ranges, and mediums; sales and specials in stores and restaurants in Waterville.
- The 3rd Annual Sidney Historical Society Antique Car and Tractor Show will be held at the Silver Spur Riding Club on the River Road on Saturday, July 28.
- On Saturday, July 28 at 4 pm there will be a Civil War discussion with historian and author Jay Hoar at the Spring Gallery in Belgrade Lakes. 495-3113

AUGUST

- "Stephan the Great" will perform his magician act at the Oakland Public Library on Wednesday, August 1 at 2 pm as part of the children's summer

- reading program. 465-7533
- Taste of Greater Waterville, dinner and entertainment under the stars, featuring sopng artist Eddie Money, will be Wednesday, August 1. Downtown Waterville Sidewalk Sales are August 5-7. 873-3315
- The Rome Yacht Club 36th Annual Regatta and Treasure Hunt is scheduled for Saturday, August 4; the Commodore's Ball will be August 3. 397-3247
- Martin Swinger will perform on Saturday, August 11 at 7 pm at the Union Coffeehouse in Belgrade Lakes; \$5 donation and great goodies.
- The Sue Gawler Flower Show at the Belgrade Lakes Farmers Market will be held on Sunday, August 12; up to 3 bouquets may be entered. 495-2928
- The Blistered Fingers August Family Bluegrass Festival will be held August 23-26 at the Litchfield Fairgrounds. Twelve bands will be featured along with plenty of field picking. www.blisteredfingers.com

SEPTEMBER

- The 19th Annual 5K Road Race "Rise 'N Shine" will be held on Friday, September 28 at 6:35 am, It will begin and end at Kennebec Savings Bank in Augusta. 622-5801



L to R: **Sam Tippet** – Sr. Account Executive, **Roxanne Robinson** – Client Services Assistant, **David Veilleux** – Sr. Account Executive, **Kenneth Viens, CFP®** – Sr. Account Executive, **Joe Jabar, CFP®** – Sr. Account Executive /LPL Branch Manager, **Cheryl Flewelling** – Client Services Director



Kennebec Wealth Management is a comprehensive financial services firm committed to helping you improve your long-term financial success. Our company is built on a solid foundation of excellent client service and in-depth market knowledge. We provide the most comprehensive and personal service available, thus earning a reputation for excellence in the industry.

For a free no-obligation consultation with any of our advisors, call (207) 660-4100

Experience

Joe has been in the financial services industry since 1996 and offers a full range of wealth management and investment services to high net worth investors, traditional brokerage customers, and institutions. As a CERTIFIED FINANCIAL PLANNER™ Joe integrates a full range of services to help clients accumulate, maintain, and preserve their wealth and ultimately to help them pursue their financial goals and dreams.



Community Involvement

- The Alford Youth Center - Board of Directors
- United Way of Mid-Maine - Board of Directors
- Coaches youth football, basketball, and baseball

**THIS MONTH'S
FEATURED ADVISOR IS
JOE JABAR**

Securities offered through LPL Financial, member FINRA/SIPC.
Insurance products offered through LPL Financial or its licensed affiliates.

Not FDIC Insured	Not Bank Guaranteed	May Lose Value
Not Insured by any Federal Government Agency	Not a Bank Deposit	

Kennebec Wealth Management
Located at Kennebec Savings Bank Office Suite
226 Main Street
Waterville, ME 04901

Building Strong Relationships.

www.kennebecwealth.com

Advertising in Summertime in the Belgrades really works! Call Erle Morse at 207-495-3777 for rates and information.

Presented by Modern Art Foundry



Bronze Sculpture Exhibit

Belgrade Lakes Village
Thursday–Sunday until Labor Day
11–5 and by appt
207-495-3113

www.modernartfoundry.com
81 Main St., Rte.27

**When you leave
your vacation
home, please
leave your
unopened,
unexpired
foodstuffs for
the Food Pantry!**

**Drop Off
Locations:**

- Belgrade Post Office •
- Belgrade Lakes Post Office
- Belgrade Community Center
for All Seasons
- Belgrade Town Office

Apple Macintosh Support

MACINTOSH SOLUTIONS

Security/Virus & Malware Removal • Repairs • OS X, OS 9 • Networking,
• Troubleshooting • File Recovery • Training
iPhone &iPod Touch Business Integration, Cell Phone File Migration & Forensics
Website Design • Search Engine Optimization

SAMARA
CONSULTING



Michael Breault

24 Welch Rd., Wilton, Maine 04294 • 207-645-5083 •
cell 207-578-0226 • mbreault@samaraconsulting.com •



– Conservation Too –

Demystifying Mulch

by Kennebec County Soil & Water Conservation District

Mulching is one of the most effective and most efficient Best Management Practices (BMP's) we have to work with. For stabilizing construction sites, eroded banks, and topdressing buffer plantings, mulch can work wonders when it comes to protecting water quality. First a short discussion on why mulch is such an effective BMP. When bare soil is exposed to the elements, erosion begins to occur. Rain and wind can remove topsoil very quickly and deposit soil particles in the water. As these particles are transported in stormwater, they act like little magnets picking up pollutants and nutrients along the way. Once in the lake (or river or stream) these pollutants are deposited causing a whole host of problems including algae blooms and elevated levels of toxins.

Mulch applied to an exposed site in the right amounts will serve several functions. A primary function is to protect the underlying soil from erosion and keep soil out of a water body. A secondary function occurs when a mulched area is located on the down side of a slope between a hill and the water. The mulch will filter out most soil particles, fertilizers or toxins found in storm water runoff. It can serve to "lock up" those particles and materials. In some cases, a mulch berm between a driveway, lawn or parking lot and the water can be added to provide this filtration even if there is no exposed soil to cover. Another major benefit to mulching is the moisture holding capabilities of this product. Mulching landscaped

areas with tree and shrub plantings ensures that water, either from rain or from a hose, will percolate to the roots and keep the soil cool and moist. While simple enough the confusion begins when you start shopping for the right type of mulch for a specific kind of job. Mulch comes in many textures and colors. Sorting out the differences between "conservation mulch", "erosion control mulch", "bark mulch" and "wood chips" can become a daunting task when everyone has a slightly different name for these items.

So... for a brief "Mulch Primer" --

"Wood chips" are simply trees or brush that have been run through a chipper. Wood chips are NOT the best choice to protect against soil erosion. These chips are generally 1-2 inches square and have not yet been exposed to the elements or begun to decompose. Given their shape, chips do not weave together or hold much water. Some mulch is sold as "conservation mulch". Usually these mulches are standard pine or cedar bark mulch just like that used for landscaping flower or shrub plantings in your yard. This mulch may hold soil in place in fairly flat areas and retains moisture well. Because this type of mulch is often used for landscaping and around plantings, 3-4" is recommended. Because it is referred to as "conservation mulch" people may think this product is like Erosion Control Mulch. IT IS NOT!

Erosion control mulch (ECM) was developed to protect soil from erosion in areas that receive high traffic, exposure to the elements or occur on

steep slopes. ECM, sometimes called slope stabilizer, is not your standard landscape bark mulch. The best way to describe ECM is "chunky". While regular bark mulch is fairly fine with strands of bark no longer than 6", ECM has larger pieces of woody material, bark and small stones. These small rocks mixed in with the bark provide additional structure to the product and add weight for keeping slopes intact. One key to the effectiveness of ECM is the size and shape of the bark material. When applied, the long and fairly thin material essentially weaves itself together and creates a kind of blanket over the soil. ECM traps plenty of moisture, similar to standard bark mulch. Thickness of application can vary depending upon several factors but 4-6" is average. Sites with extreme exposure to wind and water may need more while mulch berms may be 18-24" tall.

Buffer plantings are ideal sites for ECM. When the District installs a watershed buffer planting, we use ECM. One important thing to remember is that 4" is too much mulch around the trunk of a tree or shrub. Remember to pull back the top 2" of material leaving 1-2" around plants. If the look of the ECM is too chunky for your taste, topdressing with an inch of standard landscaping bark mulch is fine. That technique may also be useful to create a pathway for walking through your mulched area.

Articles contributed by the Kennebec County Soil & Water Conservation District in Augusta For information about any of our conservation projects please contact Dale Finseth at 622-7847, x 3 or check our website at www.kcsacd.org

Shoreland Zoning Law Becomes Effective January 1, 2013

The Franklin County Soil and Water conservation District advises contractors that as of January 1, 2013, state law mandates that any contractor working within shoreland zoning will have to have contractor certification or have a DEP (Department of Environmental Protection) certified contractor on site during any earth disturbance. Contractor certification is currently on a voluntary basis with the DEP Non-Point Source Center paying for most of the field site review.

To qualify by January 1st and become a certi-

fied contractor, contractors must take an in-class training session and a site evaluation of an active site with at least two Best Management Practices, BMPs, installed (more if needed). The day-long Contractor training session is put on by the Department of Environmental Non-Point Training Center under the supervision of Bill LaFlamme.

A site evaluation consists of someone knowledgeable in BMPs coming to an active or recently completed construction site and making sure

that the BMPs installed are being used and installed properly.

Contractors wishing to become certified must pay a fee of \$25. Up to three individuals from the same company who are or were involved with a project may be certified at one time.

Anyone who wants to become certified before the deadline or would like more information may contact Rosetta Thompson from FCS&WD at 778-4279.



Charming colonial nestled between Great Pond and Salmon Pond in beautiful North Belgrade. Multiple rooms for great entertaining with 3 gorgeous stone fireplaces! Master Suite with built in closets and many extras. Private 5 acres with fabulous mature gardens. New Price: \$199,000
Call Stephanie Yeaton at Lakepoint Real Estate today!
(207) 592-5577 or (207) 495-3700

Lakepoint
Real Estate

Win an 18-foot Pontoon Boat & Trailer

Raffle tickets are sold every weekend at or across from Day's Store in Belgrade Lakes Village. Proceeds will benefit the Belgrade Lakes Association
Drawing August 18, 2012 207-512-5150

DAVID STEVENS
Excavation & Septic Systems

LOAM GRAVEL SAND

465-3815
Cell: 314-0314

P.O. Box 146 • Belgrade, Maine 04917

The Melinda Ann is Back!

Join us Sundays*, 10 a.m. to noon, for a fun and educational cruise on Great Pond. Learn the methods of measuring water clarity, collecting samples from the lake bottom, use of cameras, and more. It's all free! For reservations call Capt. Phil (Mulville), lake educator, 508-971-2496.
*only July 8th, July 15th & July 22nd left!

These Melinda Ann trips are paid for by the membership of the Belgrade Lakes Association • www.blmaine.com



The Village Meddler

Open 6 Days
9am–6pm
Sundays
12pm–6pm
Closed Tuesday

Gifts • Handcrafts
Lake Shore Drive • Belgrade Lakes
495-7707

ALDEN CAMPS
Est. 1911

• Lobster Bakes on Friday nights by Reservation
• Lakeside Cottages • Boats & Motors
• Full American Plan
• Dining on the Porch by reservation Saturday through Wednesday

3 Alden Camps Cove
Oakland, Me 04963
(207-465-7703)

E-mail: info@aldencamps.com • Website: www.aldencamps.com

Why Pay More?
LARGEST SELECTION OF
Beer • Wine
Soda & Liquor

Over 1600 Wines
Great Selection of
Distributor Close-Out Wines
Over 400 Beers including
All Microbrews
Full Selection of Liquor
Debit & Credit Cards accepted

JOKAS' DISCOUNT BEVERAGES

Central Maine's Largest Redemption Center
873-6228 • 52 Front Street • Waterville

The Village Inn
Belgrade Lakes, Maine

Open for Dinner Seven Days A Week 5pm–9pm
Join us at The Tavern At The Village Inn
Lower Level – Open Every Day at 4 pm

Reservations Encouraged
(207) 495-3553
www.villageinnducks.com
"Where Memories Last a Lifetime"

O'Brien's Irish Restaurant & Pub

Fine dining in a rustic restaurant featuring nightly specials. Irish Pub serves, lunch, dinner, & spirits.

Eat and stay at the
Best Western Plus Waterville

Reservations: 873-0111
207-872-2310
www.watervillemainehotel.com
Exit 130 off I-95, 375 Main St., Waterville, Maine

– Accommodations –

Alden Camps, American Plan cottages, boat rentals, 3 Alden Camps Cove, Oakland, 465-7703, www.aldencamps.com

Among the Lakes Bed & Breakfast, Rt 8, North Belgrade, 465-4900, www.amongthelakes.com

Bear Spring Camps, 60 Jamaica Point Rd., Rome, 397-2341, www.bearspringcamps.com

Belgrade Cottages, 9 Bass Lane, Belgrade, 495-9217, www.belgradecottages.com

Castle Island Camps, American Plan, Castle Island Rd, Belgrade Lakes, 495-3312, www.castleislandcamps.com

Kozy Cove Cottages, Rt 8, Salmon Lake, Belgrade, 465-0959, www.kozy-covecottages.com

The Village Inn, 1 & 2 bedroom suites, Rt 27, Belgrade Lakes Village, 495-3553, www.villageinnducks.com

Whisperwood Cottages, American Plan, boat rentals, 103 Taylor Woods Rd, Belgrade, 465-3983, www.whisperwood-lodge.com

Wings Hill Inn, Rt 27, Belgrade Lakes, 495-2400, 866-495-2400, www.wingshillinn.com

RESERVATIONS SERVICES

Belgrade Vacation Rentals, 81 Main St, Belgrade Lakes, 495-4011, www.belgradevacationrentals.com



Pickup Café Opens at Skowhegan Farmers' Market...and other Market News

There's a bustling business behind those yellow garage doors at the Skowhegan Grist Mill and this week they're really celebrating. It's the grand opening of The Pickup Café.

Skowhegan's multi-farm CSA (Community Supported Agriculture), The Pickup sources local food and cooks it up for the community every Saturday during market and for special community events such as the monthly Art Walk hosted by the Wesserunsett Art Council - when

The Pickup will have dessert and coffee.

Customers will receive a raffle ticket with every purchase and be entered to win a week's share. That's one FREE basket of local farmer-grown food drawn every week!

The Pickup multi-farm CSA delivers a basket of the best from all the area farms to its customers each week. To sign up or find out more, visit the Pickup website.

Oakland Farmers' Market New This Summer

The Oakland Farmers' Market, open every Friday 2-6 pm, is new to the area since June. Located at 895 Kennedy Memorial Drive, the Pine Acres Parking Lot, the market will offer everything from the freshest vegetables, seedlings, meat, and eggs. Fresh bread will be available from Daily Bread as well as homemade ice cream (cones and pints) from Stone Fox Farm Creamery. The market will continue on Fridays throughout the summer. For more information call 465-3094.

Belgrade Lakes Market Hosts Apple Lecture

On Thursday, July 26, "Apples of Belgrade: will be presented by John Bunker at 7 pm at the Maine Lakes Resource Center. Co-hosts are the Belgrade Lakes Farmers' Market and the Belgrade Historical Society. Refreshments will follow the presentation. For more information call 495-2928

Maple Leaf Self Storage
Belgrade Me • 3.3 mi off Rte 27 on Route 135
495-2191

Various size units
Owners live on site

 Boat / Auto Storage
By foot or unit

 **1339 Augusta Road**
Belgrade, Maine
207-495-2294
info@LoonRidge.com
www.LoonRidge.com

 **AMONG THE LAKES**
BED & BREAKFAST

www.amongthelakes.com
Route 8, Belgrade

465-4900

- Quiet, Quality Accommodations
- Friendly, Heartwarming Home
- Delicious, Hot Country Breakfast
- Air-Conditioned and Heated Rooms
- Lake Access on Great Pond
- Open Year Round

CASTLE ISLAND CAMPS

Boats, Bait, Tackle, Gas, Kayaks



Boats, Daily or Weekly
495-3312
Rentals for Long Pond Only



Dining

Augusta

• **Riverfront Barbeque & Grille and Gin Mill Lounge**, 300 Water St., Augusta. 622-8899, www.riverfrontbbq.com

Belgrade

• **Belgrade Lakes Golf Club**, lunch/snacks, West Road, Belgrade Lakes, 495-4653, www.belgradelakesgolf.com
 • **Pete's Pig**, 81 Main St., Belgrade Lakes Village, 495-4095, www.petespig.com
 • **The Village Inn**, Rte. 27, Belgrade Lakes Village, 495-3553, www.villageinnnducks.com
 • **Whisperwood**, Salmon Lake/McGrath Pond, Taylor Woods Rd, Belgrade, open to the public by reservation only, 465-3983, www.whisperwoodlodge.com
 • **Wings Hill Inn and Restaurant**, Rt. 27, Belgrade Lakes Village, 495-2400 or 800-495-2400, www.wingshillinn.com

Fairfield

• **Cacciatores**, 29 Main St, Fairfield, 872-9700.

New Sharon

• **Top of the Hill Grill**, 54 Farmington Falls Rd. New Sharon. 779-0973. www.topofthehillgrillonline.com

Oakland

• **Alden Camps**, Lunch or dinner by reservations, Sat. - Wed., space permitting. 3 Alden Camps Cove, Oakland. 465-7703. www.aldencamps.com
 • **Riverside Farm Restaurant and Wine Market**, 291 Fairfield St, Oakland, 465-4439. www.riversidefarmmarket.com

Waterville

• **Restaurant & Pub at the Waterville Grand**. 375 Upper Main St, Waterville. 873-0111.

Winslow

• **Lobster Trap & Steakhouse**. 21 Bay St, Winslow. 872-0529. www.lobstertrap-seafood.com.

Winthrop

• **Peppers Garden & Grill**. 357A Main St, Winthrop. 377-8877



Whisperwood Lodge & Cottages

Fishing Boat Rentals on Salmon Lake & McGrath Pond
 All boats shown on our website
 Located on the South end of Salmon Lake in North Belgrade
Now open to the Public for Dining by reservation only. 465-3983
 Breakfast 8:am - 9:am, Dinner served at 5:pm
 Daily menu listed on our website
 Boat docking available for Lake Residents
www.whisperwoodlodge.com

Ballard Meats & Seafood
 Custom Cut Meats

- Retail
- Wholesale
- Smoking

1-800-564-6328 • 622-9764
 Myrtle St., Manchester, Maine

Belgrade Cottages Guide Service
 Guided Fishing Trips
 Wildlife and Scenic Lake Tours
 Bob Richter 207-314-8469

Sunset Cruises
 Canoe and Kayak Rentals
 Great Pond – Belgrade

Cacciatores
 "An Italian Steakhouse"

Waterville's Best Dining Experience
 Now Serving **PRIME RIB** Fridays and Saturdays
OPEN EVERYDAY LUNCH AND DINNER
 Serving Fine Wine & Cordials
 Senior Discounts Everyday

Delicious Italian Food
 Made with the Freshest Ingredient
 Fresh Steaks, Seafood, Pasta, and Salads
 Gluten-Free Pasta Available!
29 Main Street • Fairfield
872-9700 (Reservations Accepted)
www.Cacciatores.com

Appetizers at Altitude
Belgrade Lakes Golf Club
Open to the Public

Winterberry Farm
 your family's local Organic Farmstand

Organic veggies at our farmstand
 Open 7days a week 9-6
 Come visit our 40 acre farm on the shores of Great Pond with 5 acres of gardens.
 Horse and oxen powered
 Cut your own flowers too.
 Where children and veggies grow
 Rt.27 Belgrade, Maine • 207.495.2593
www.winterberryfarmstand.com

The Small Garden Guide

Recipe of the Week from Sue Gawler's Collection

Pea Salad with Radishes and Feta

4 c fresh shelled peas (about 4 lb in pod), or Snap peas in bite-sized pieces
 1 bunch radishes, sliced*
 1 c (about 4 oz) crumbled feta cheese

*If the radishes come with greens, save them. A quick sauté with olive oil & garlic – delicious!

Vinaigrette

2 tablespoons lime juice
 2 tsps honey
 1/2 tsp salt
 1 teaspoon cumin
 4 tablespoons extra-virgin olive oil
 3 tablespoons chopped fresh dill
 S&P

Cook peas in boiling salted water until barely tender, 3-5 minutes. Chill immediately in cold water; drain.

Mix the first 4 vinaigrette ingredients and then whisk the olive oil in slowly. Stir in dill. Taste, add S&P as needed.

Combine peas, radishes, and feta in large bowl. Add vinaigrette to coat lightly; toss.

Peas...



Peas originated in the Middle East and owe their present name to the Latin "pisum." They were first grown only for the dry seeds to be used in soups. The fresh green peas were considered a rare delicacy until the 18th Century.

Most popular among the serving methods for peas is as a separate vegetable; many find their way into salads and soups. Edible pod peas, or snow peas, are especially popular in Oriental cooking and represent a greater volume in grocery stores.

Peas yield moderate amounts of protein, Vitamins A and C and potassium. They have antioxidant and anti-inflammatory benefits.

They must be well refrigerated to prevent deterioration, with light sprinkling.





-Business Directory-

ACCOMMODATIONS

See page 20

ADVENTURE

Belgrade Cottages Guide Service, fishing, lake tours, canoe/kayak trips and rentals. 9 Bass Lane, Belgrade, 314-8469, www.belgradecottages.com
Maine Wilderness Tours, fishing, canoeing/kayaking, lobster picnic, bird watching, 7 Croquet Lane, Belgrade, 465-4333, www.MaineWildernessTours.com

ANTIQUES

Barbara’s Antique & Collectibles Group Shoppe, Rt 201, 414 Lakewood Rd, Madison, 474-2550, 474-8357
Stoney Creek Antiques, 881 Civic Center Drive, Augusta, 626-9330

BANKING

Kennebec Savings Bank, 150 State St, Augusta, 622-5801, www.kennebecsavings.com
Maine State Credit Union, 200 Capitol St, Augusta, 623-1851, www.maineotecu.org

BEVERAGES

Jokas’ Discount Beverage, 52 Front St, Waterville, 873-6228, www.jokas.net

BICYCLES

Auclair Cycle & Ski, 64 Bangor St, Augusta, 623-4351, auclaircycle@msn.com

BOATS

(Besides the categories immediately following, see Canoes and Kayaks, Docks, and Boat Repair.)

BOAT COVERS

Waterville Upholstery & Canvas, 1042 Kennedy Memorial Dr, Oakland, 465-7847

BOAT LIFTS

Hammond Lumber Company, Auburn, Bangor, Belgrade, Boothbay Harbor, Brunswick, Damariscotta, Fairfield, Farmington, Greenville, Pemaquid, Portland, Skowhegan, 866-HAMMOND, www.hammondlumber.com

BOAT MOORINGS

Great Pond Marina. 25 Marina Dr, Rt 27, Belgrade Lakes, 495-2213, www.greatpondmarina.com

BOAT RENTALS

Belgrade Canoe & Kayak, Rt 27, Belgrade, 495-2005, 242-6331, www.kayakandcanoe.com
Castle Island Camps, Castle Island Rd, Belgrade Lakes, 495-3312, www.castleislandcamps.com
Great Pond Marina, 25 Marina Dr , Rt 27, Belgrade Lakes, 495-2213, www.greatpondmarina.com
Whisperwood Cottages, 103 Taylor Woods Rd, Belgrade, 465-3983, www.whisperwoodlodge.com

BOAT REPAIR

Belgrade Boat Shop, Rt 135, Belgrade, 485-6953
Kennebec Boat Repair, 907 Oakland Road, Belgrade,

465-9012, www.KennebecBoatRepair.com

BOAT SALES AND SERVICES

Belgrade Canoe & Kayak, Rt 27, Belgrade, 495-2005, 242-6331, www.kayakandcanoe.com
Clark Marine, 57 Puddledock Rd, Manchester, 622-7011, mail@clarkmarine.biz, funonthewaterstartshere.com
Hamlin’s Marine, 290 West River Road, Waterville, 872-5660, www.hamlinsmarine.com
Mid-Maine Marine and RV, 885 Kennedy Memorial Drive, Oakland, 465-2146, www.midmainemarine.com
Trailside Performance, 797 Augusta Rd (Rt 201), Winslow, 873-2366, www.trailsideperformance.com

BOAT STORAGE

Belgrade Boat Storage, 41 Pinkham’s Cove Rd, Rt 27, Belgrade, 495-3421, 314-3287, www.belgradeboatstorage.com, www.belgradeboatrentals.com
Belgrade Lakes Marine and Storage, Inc, 366 Augusta Rd, Belgrade, 495-2378, www.belgradelakesmarine.com
Clark Marine, 57 Puddledock Road, Manchester, 622-7011; and Rt 202, Monmouth, mail@clarkmarine.biz, funonthewaterstartshere.com
Great Pond Marina, 25 Marina Dr, Rt 27, Belgrade Lakes, 495-2213, www.greatpondmarina.com
Hamlin’s Marine, 290 West River Rd, Waterville, 872-5660, www.hamlinsmarine.com
Kennebec Boat Repair, 907 Oakland Road, Belgrade, 465-9012, www.KennebecBoatRepair.com
Maple Leaf Self Storage, 688 Manchester Rd, Rt 135, Belgrade, 495-2191, 441-5529
Mid-Maine Marine and RV, 885 Kennedy Memorial Dr, Oakland, 465-2146, www.midmainemarine.com
Trailside Performance, 797 Augusta Rd, Rt 201, Winslow, 873-2366, www.trailsideperformance.com

BOOKS

CHILDREN’S BOOK CELLAR, 52 Main St, Waterville, 872-4543, kidsbookseller@verizon.net

BOTTLE AND CAN REDEMPTION

Jokas’ Discount Beverage, 52 Front St, Waterville, 873-6228, www.jokas.net

BUILDERS

(See also Kitchens, Plumbing, and Excavating)

Craig’s Carpentry/North Bay Estates, Rt 8, North Belgrade, Craig Alexander, 649-3749
G&L Contracting, Adam Gardner, Belgrade, 215-7951
LakeHouse Design Build, Serving Central Maine’s Waterfront Design Build Needs Since 1987. 10 Liberty Lane P.O. Box 663 Readfield, Maine 04355 www.lakehousedesignbuild.com 207.685.7393 -207.242.3663
Mainely Molding & Restoration, 449 Wilder Hill Rd, Norridgewock, 634-2821, www.mainelymolding.com

BUILDING MATERIALS

Gagne and Son, 28 Old Rt 27, Belgrade, 495-3313, www.gagneandson.com
Hammond Lumber Company, Auburn, Bangor, Belgrade, Boothbay Harbor, Brunswick, Damariscotta, Fairfield, Farmington, Greenville, Pemaquid, Portland, Skowhegan, 866-HAMMOND, www.hammondlumber.com

CANOES AND KAYAKS

Belgrade Canoe & Kayak, Route 27, Belgrade, 495-2005, 242-6331, www.kayakandcanoe.com
Belgrade Cottages Guide Service, fishing, lake tours, canoe/kayak trips and rentals. 9 Bass Lane, Belgrade, 314-8469, www.belgradecottages.com

CLOTHING

New Balance Factory Outlet, 13 Walnut St, Skowhegan, 474-6231, www.newbalance.com, nbfactorystore.com

COMPUTER CONSULTANTS

Samara Consulting, Macintosh Consultant, Michael Breault, 24 Welch Rd, Wilton, 645-5083, cell 578-0226, mbreault@samaraconsulting.com, www.samaraconsulting.com

DENTAL CARE

The Complete Dental Center, 107 Birch St, Farmington, 860-2781

DINING

(See Dining Directory on page 21)

DOCKS

G&L Contracting, Belgrade, 215-7951, agardner81@yahoo.com
Hammond Lumber Company, Auburn, Bangor, Belgrade, Boothbay Harbor, Brunswick, Damariscotta, Fairfield, Farmington, Greenville, Pemaquid, Portland, Skowhegan, 866-HAMMOND, www.hammondlumber.com
Trailside Performance, 797 Augusta Rd, Rt 201, Winslow, 873-2366, www.trailsideperformance.com

ELDER CARE

Maine-ly Elder Care, 28 Center St, Oakland, 465-3249, www.maine-lyeldercare.com

EXCAVATING

Belgrade Boat Storage, 41 Pinkham’s Cove Rd, Belgrade, 495-3421, 314-3287, www.boatstorage.com
David Stevens, P.O.Box 146, Belgrade, 465-3815, cell 314-0314

EYE CARE

Maine Eye Care Associates, 325 E. Kennedy Memorial Dr, Waterville, 873-2731, www.MaineEyeCare.com

FARMSTANDS

Winterberry Farm, 538 Augusta Rd, Rt 27, Belgrade, 495-2593, www.winterberryfarmstand.com

FINANCIAL PLANNING

Golden Pond Wealth Management, 129 Silver St, Waterville, 873-2200, www.goldenpondwealth.com
Kennebec Wealth Management, 150 State St, Augusta, 622-5801, www.kennebecsavings.com

FIREWOOD

J & M Logging, Inc. 853 Civic Center Dr., Augusta, 622-6353

FLOORING

Hammond Lumber Company, Auburn, Bangor, Belgrade, Boothbay Harbor, Brunswick, Damariscotta, Fairfield, Farmington, Greenville, Pemaquid, Portland, Skowhegan, 866-HAMMOND, www.hammondlumber.com



FLOWERS AND PLANTS

Longfellow’s Greenhouses, 81 Puddledock Rd, Manchester, 622-5965, www.longfellowsgreenhouses.com
Pierce’s Greenhouse, 407 Belgrade Rd, Oakland, 465-7788

GALLERIES

Artisan’s Barn, 163 North Rd, Readfield. 685-9787, www.theartisansbarn.com
Spring Gallery & Sculpture Garden, bronze castings, 81 Main St, Belgrade Lakes, 495-3113, www.modernartfoundry.com, www.springgallery.com

GIFTS

Kozy Cottage, 13 Church St, Oakland, 465-0959, www.kozy-covecottages.com
Day’s General Store, 180 Main St, Rt 27, Belgrade Lakes, 495-2205, www.go2days.com
The 1830 House on Long Pond, 134 Main St, Belgrade Lakes Village, 495-3277
The Village Peddler Gift Shop, Lake Shore Dr, Belgrade Lakes, 495-7707

GOLF

Lakewood Golf Course, 803 Lakewood Rd, Madison, 474-5955, www.lakewoodgolfmaine.com
Natanis Golf Course. 735 Webber Pond Rd, Vassalboro, 622-3561, www.natanisgc.com

GROCERIES

Day’s General Store, 180 Main St, Rt 27, Belgrade Lakes, 495-2205, www.go2days.com

HEALTH CENTER

Belgrade Regional Health Center, 4 Clement Way, Belgrade Lakes, 495-3323, www.healthreachchc.org
Inland Hospital, The Clinic at Walmart, walk-in health care, 80 Waterville Commons Dr, Waterville, 680-2110, www.inlandhospital.org

HEATING

Jim Webster, West Road, Belgrade, 495-2370, 462-3472

ICE CREAM

Day’s General Store, 180 Main St, Rt 27, Belgrade Lakes, 495-2205, www.go2days.com

JEWELRY

Larsen’s Jewelers, 57 Main St, Waterville, 872-6301, 800-697-1874, www.larsensjewelers.com
L.Tardif Jeweler, 62 Main St, Waterville, 872-7542, 800-834-3638

KITCHENS

Hammond Lumber Company, Auburn, Bangor, Belgrade, Boothbay Harbor, Brunswick, Damariscotta, Fairfield, Farmington, Greenville, Pemaquid, Portland, Skowhegan, 866-HAMMOND, www.hammondlumber.com

LAKE ASSOCIATIONS

Belgrade Lakes Association (BLA), Long Pond and Great Pond, PO Box 551, Main Street, Belgrade Lakes, 512-5150, www.belgradelakesassociation.com

LANDSCAPING

G&L Contracting, Belgrade, 215-7951, agardner81@yahoo.com
Lakeside Landscape, 13 Station Rd, Belgrade, 465-3039, 831-7053, 632-1086, lakesidelandscape1@yahoo.com
Longfellow’s Greenhouses, 81 Puddledock Rd., Manchester, 622-5965, www.longfellowsgreenhouses.com
Lynch Landscaping, Skowhegan, 474-2420, lynchlandscaping.com
Native Notions, 213 West Rd, Belgrade, 495-6040, 314-9538, nativenotions@hotmail.com, www.nativenotionslandscape.com

MASONRY

Michonski Brothers Mason Contractors, PO Box 656, Norridgewock, 634-2516 www.michonskibrothers.com

MEATS

Ballard Meats & Seafood, Myrtle St, Manchester, 622-9764, 1-800-564-6328

MOVIE THEATERS

Railroad Square Cinema, call for titles and times, 17 Railroad Square, Waterville, 873-6526, www.railroadsquarecinema.com

PHYSICAL THERAPY

Dockside Physical Therapy, 47 Main St, Belgrade Lakes, 495-3195, 512-2544, Fax 512-2545

PIANO SUMMER CAMP

Diane Gorman, Gorman3366@roadrunner.com, 906 Manchester Rd, Belgrade, 495-3222

PICTURE FRAMING

The Framemakers, 46 Main St, Waterville, 872-8927, www.theframemakers.com

PLUMBING

Paul Hanna's Plumbing, Belgrade Lakes, 495-3805
Houle's Plumbing, Heating and Air Conditioning, 19 North St, Waterville, 872-6762, www.houlesphac.com

PRINT, MAIL & MORE

Color Storm, Inc, Main St, Belgrade Lakes, 592-5990

PROTECTIVE COATINGS

Normile Sealcoating, pavement and roofing, 332-4131, normile.chris@gmail.com

REAL ESTATE DEVELOPMENTS

North Bay Estates, Belgrade, 649-3749, crgsnbe@yahoo.com

REAL ESTATE

Coldwell Banker Thomas Agency, 75 Main St, Winthrop, 377-2121, www.coldwellbankerthomas.com
Day's Real Estate, 262 Augusta Rd, Rt 27, Belgrade Lakes, 495-3111, 1-888-495-3111, www.daysrealestate.com
Lakepoint Real Estate, 221 Main St, Belgrade Lakes, 495-3700, www.belgradelakepoint.com
Rizzo Mattson Realtors, 219 Capitol St, Aigista. 622-9000. 800 894-7979, www.rizzomattson.com
Sprague & Curtis Real Estate, 75 Western Ave, Augusta, 623-1123, www.spragueandcurtis.com

RESERVATIONS

See page 20

RESTAURANTS

(See Dining Directory on page 21)

RETIREMENT COMMUNITIES

Granite Hill Estates, 60 Balsam Dr, Hallowell, 626-7786, 1-888-321-1119, www.granitehillestates.com

SCHOOLS

St. Michael School, grades pre-K through 8, 56 Sewell St, Augusta, 623-3491, www.smsmaine.org

SEAFOOD

Ballard Meats & Seafood, 55 Myrtle St, Manchester, 622-9764, 1-800-564-6328
Lobster Trap & Steakhouse, 15 Bay St, Winslow, 872-0529, www.lobstertrap-seafood.com

SECURITY SYSTEMS

Cayer Security Services, Inc, 208 College Ave, Waterville, 453-9177, www.cayersecurity.com

SELF STORAGE

Maple Leaf Self Storage, 688 Manchester Rd., Rt 135, Belgrade, 495-2191

SEPTIC SYSTEMS

Bellavance Construction Company Inc, 31 Hulin Rd, Belgrades Lakes, 495-2492
Stanley’s Septic Tank Service & Construction, 187 Norridgewock Rd, Fairfield, 453-9819, 1-800-660-7826, www.stanleysseptic.com

SHOES AND SNEAKERS

New Balance Factory Outlet, 13 Walnut St, Skowhegan, 1-877-623-7867, www.newbalance.com

SPA

Belgrade Lakes Day Spa, “Your Premier Wellness Center,” 495-2560, www.belgradelakesdayspa.com

STONEMWORK

Gagne and Son, 28 Old Rt 27, Belgrade, 495-3313, 1-800-339-3313, www.gagneandson.com

THEATER

The Theater at Monmouth, Cumston Hall, off Rt 135, Monmouth, 933-9999, www.theateratmonmouth.org

VETERINARY SERVICES

Lakeside Veterinary Clinic, 88 Libby Hill Rd, Oakland, 465-7387, 465-8387, www.lakevets.com

WINDOWS

Hammond Lumber Company, Auburn, Bangor, Belgrade, Boothbay Harbor, Brunswick, Damariscotta, Fairfield, Farmington, Greenville, Pemaquid, Portland, Skowhegan, 866-HAMMOND, www.hammondlumber.com

WINDOW TREATMENTS

Blind Time, 24 Meadow Hill Dr, Farmingdale, 621-9832, www.blindtime.com





Expressions

For the month of July, The Harlow Gallery at 160 Water Street in downtown Hallowell features two exhibitions in honor of Hallowell's 250th Anniversary.

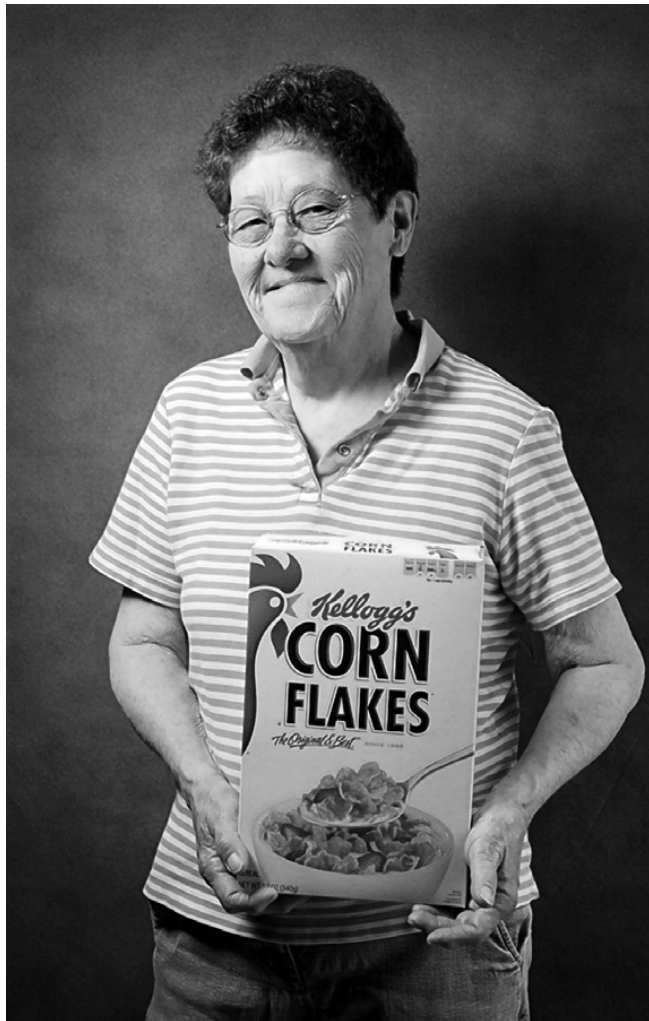
"Hallowell through History," by member artists of the Kennebec Valley Art Association depicts Hallowell past and present. "Model Citizens" is a series of photographic portraits of Hallowell Citizens by Bill Duffy. Both exhibitions will be on view through July 28.

Of his project, Duffy writes, "This exhibit (and the accompanying book) is based on a simple idea: that our faces tell a story. This collection of photographic portraits of twenty-five Hallowellians is an anthology of those stories and a tribute to the city and its diversity. The portraits tell a tale both about me and the individuals I got to know during sixteen years of working and living in Hallowell. Some I met while serving on various committees or commissions. Some I interacted with daily while getting lunch or groceries or postage stamps. Some were neighbors or people who owned dogs that my dog approved of. Some were just interesting individuals I met through chance encounters on Water Street or while walking in the Res. These portraits are not intended to be a gallery of Hallowell's most illustrious citizens. While many are certainly well known, others may be just a familiar face or someone you've never seen.



Anita Morrissey.

Two Exhibits Celebrate Hallowell's 250th Anniversary



Photos above and below by Bill Duffy



Taken together, they represent my own personal portrait of the City. All said "Yes" when I asked to take their portrait."

An Opening for both exhibitions will be held on Friday, July 6, 5-8 pm. The event is free and

open to the public and refreshments will be available. Regular gallery hours are Wednesday-Saturday, noon to 6 pm. The Harlow Gallery is located at 160 Water Street, Hallowell. For more information call 622-3813.



Stoney Creek Antiques

Quality Antiques and Collectibles

antique & vintage glass/dinnerware, art, books, miniatures, vintage clothes jewelry, period furniture, Americana

881 Civic Center Drive, Augusta
10-5 Tues-Sat 626-9330

HEIRLOOM
ANTIQUES & VINTAGE
207.877.7877
heirloommaine@hotmail.com
35 CONCOURSE E • WATERTOWN, ME 04901

MID CENTURY MODERN,
• Works of Art
• Vintage Clothing
• Antiques • Jewelry
Tuesday – Saturday
11 am to 5 pm
Find us on Facebook!

David J. Auclair
www.auclaircycle.com

AUCLAIR
CYCLE & SKI

64-66 BANGOR ST. AUGUSTA, ME 04330
623-4351 / 800-734-7171 • Fast Professional Service
Bicycles • Skateboards • Roof Racks • Rentals

PIERCE'S GREENHOUSES

Opening May 1

SPRING HOURS
Sunday thru Saturday
9AM-5PM



407 BELGRADE ROAD
OAKLAND, MAINE 04963
207-465-7788
pierce231@gmail.com

Annuals
Perennials
Vegetable Seedlings
Herb Seedlings
Soil and Compost
Containers made to order
Hanging Baskets



Fishing

How much fun can you pack into one week? Well, we went white water rafting with the 5th grade graduating class of Belgrade Central School! How about that for fun. One of my favorite things about living in Belgrade is the people, especially the kids. Spending a day playing on the river with a bunch of 11-year olds and their super-cool parents will certainly be a highlight of my summer. Unfortunately, the rafting companies don't let you fish out of the rafts when you are going down river, so we headed back to Belgrade to focus on some largemouth bass fishing. The bite was pretty good and we caught some big fish. For the most part we caught most of the fish on plastic baits ranging from Senkos to zoom brush hogs. But we also caught a few good fish on crankbaits and jigs. One helpful observation this week was that we found the sunfish (or bream) on their beds. They bed in really shallow, sandy water and protect their nests with vigor! If you find a bunch of sunfish beds you'll usually find largemouth nearby. On Friday when the sun actually came back out, we could see big schools of sunfish fry swimming around the bedded area. I have a feeling this is why the largemouth fishing was so good. It was interesting that when it was pouring rain, we found most of the largemouth in deeper water 8-12 feet. But when the sun would come out, the bass moved back into the shallows and we could sight fish them. It was important to be really quiet in the boat and not bang things around or the fish would spook. Sometimes long and accurate casts were necessary because the fish were so shallow. We probably spooked more fish than we caught, but it's such a fun and exciting way to fish that it's worth trying.

The Adventures of Gabby Guarino!

This week's adventure takes "Gabby the Gorgeous Golden" to a family event where she stole the show when she got nose to nose with a young male black bear. Basically the black bear came out of the woods around 6:15 a.m. which perfectly coincided with Gabby's morning ritual. I stood in amazement as the bear walked across the yard and got closer and closer. Gabby spotted the bear and was obviously excited to play with her new best friend. It's important to mention that Gabby may be the "Gorgeous Golden" but very seldom is she described with words such as "smart, intelligent, witty, or cunning." Brain power is not her strong suit. Oddly enough, the bear and Gabby went nose to nose and commenced to sniff each other up for a while. The bear eventually spooked back into the woods for

A Wet and Wild Week!

by Mike Guarino



Payton and "Pops" suffered through a lot of rain, but young Payton caught this giant largemouth to brighten the day!



Scott Bloom caught this big largemouth on a white BooYa Spinnerbait!



Gabby's new best friend - a young male black bear!

a while giving me enough time to get the dog in the house. About five minutes later he came back out, destroyed two bird feeders and had himself a nice breakfast. We watched him for about 20-minutes and I got some great pictures. This is certainly the perfect time of year for wildlife viewing, and I'm sure you've noticed deer standing on the sides of the roadways especially at dawn and dusk. Exploring the Kennebec Highlands is a good idea now if you want to try and see everything from deer to moose. Don't forget to pack bug spray and extra water. You can find trail

maps for the highlands on the Belgrade Regional Conservation Alliance web site: <http://www.belgradelakes.org/trails.html> Hope you have a great week - good luck!

Mike Guarino can be contacted at 465-4333
www.mainewildernesstours.com



Maine Wilderness Tours Belgrade Lakes, Maine 207-465-4333

Complete packages for fishing and family vacations
Cottage Rentals, Boat Rentals and Guide Services.
Guided Fishing for trout, pike, bass and striped bass
Canoeing and kayak trips
Drift boat or remote pond fly fishing for brown, rainbow or brook trout.
Private lakeside cottages available!

www.mainewildernesstours.com



Rentals • Sales • Service
www.belgradeboatshop.com

485-6953

Rt 135

Belgrade, ME

Let us take the hassle out of boating!
Daily, 3-Day, and Weekly
Rentals Available



Bear Spring Camps



- Waterfront cottages
- Home-style meals
- Bass, pike, and brown-trout fishing
- Boats, motors, docks
- Sandy beach
- 3.5 hours from Boston
- May-September

on Great Pond in the
Belgrade Lakes Region
www.bearspringcamps.com
207-397-2341



Pet World

Kennel Cough Complex

A common problem that plagues dogs and owners alike has been making the local rounds again recently. This complex of organisms is technically referred to as infectious tracheobronchitis, but for most of us, the term "kennel cough" is more than sufficient to describe the dry hacking cough that dogs can get after spending time with other dogs in a closed area. Kennel cough is, at the least, an irritating bronchitis for most dogs; but at its worst, it can lead to other potential complications such as pneumonia. While the organisms responsible do not affect people directly, the relentless hacking of the affected dog can be very problematic for an owner trying to get a night's sleep, and of course, none of us like to see our pets coughing so hard or at best making an educated guess, about how much an animal hurts.

We refer to kennel cough as a "complex" because usually there is more than one organism contributing to the disease. Perhaps the organism that gets the most credit is the bacteria, *Bordetella Bronchiseptica*. However several viruses can also contribute to the dog becoming affected, including adenovirus 2, parainfluenza, and even canine distemper. The organisms are all spread primarily through aerosolized droplets, from a cough or other respiratory secretion. Moist warm air with poor circulation is especially helpful in the spread. Enclosed places such as kennels, shelters, grooming parlors, pet stores, obedience class, shipments of animals being transported in trucks, vaccination clinics, low cost spay clinics, and other areas where dogs spend time together in close quarters are the usual sources for an infection. Most dogs come down with clinical signs 2 to 14 days after being exposed to another infected dog. Younger animals or animals who have immune compromise often have a harder time with kennel cough.

As mentioned, the disease complex is usually self-limiting and causes few longterm problems for most pets. The hallmark sign is a dry hacking cough that sounds like the pet has something caught in its throat. Often people

describe a loss of voice ("it sounds like she has laryngitis"), or the dog barking like a seal. For days the cough can be relentless. Some dogs develop a fever and stop eating, presumably because their throat hurts. The dog acts like a person with a common cold and bad cough. In cases where the pet is not eating, or especially if they are not drinking, antibiotics, sometimes fluid replacement and anti inflammatories are prescribed to lessen the severity of the disease. We don't recommend human medications for this, though; if you are unsure whether your dog needs medication, you should contact your vet. Usually, the problem takes about 7 to 14 days to resolve. If your dog's cough does not seem to be resolving in this time, you should also check with your vet. Dogs can spread organisms for up to three months after they feel better, however.

Fortunately, there is an effective vaccine for "kennel cough" which is given at least four days prior to boarding or grooming. The intranasal vaccine is actually put up the nostril to stimulate immunity right where the germs enter to do their dirty work. For dogs who will not permit an "up the nose" vaccine, an injectable vaccine is available; however it must be given at least 2 weeks prior to boarding, and if a pet has never had the vaccine, it must be boosted once after 3 weeks to be protective. Both vaccines need to be boosted annually after the initial one(s) to ensure continued protection; some vets even recommend giving the vaccine every 6 months to dogs who board or go to shows often. Realistically, no vaccine prevents infection entirely, but the severity and duration of illness should be significantly reduced in a vaccinated dog.

So most owners want to plan ahead to make sure their pet is vaccinated before boarding or going to puppy class. Of course other organisms, such as distemper or adenovirus 2, should also be addressed with vaccination. Fortunately the "distemper/parvo" vaccine, also called to DHPLP vaccine, given to most puppies and dogs annually thereafter, includes vaccines for

...Continued on page 27

Pet World, a bi-weekly column by Dr.Eleanor Sabeau, or Dr. Jennie Marvelle. They can be reached at Lakeside Veterinary Clinic lakevets@roadrunner.com or by phone at 465-7387

LOCAL PEOPLE LOCAL DECISIONS LOCAL IMPACT



People around Central Maine take pride in things that are "their own."

At Kennebec Savings Bank, we feel the same because we live, work and play here, too.

If you want to know your local banker, to have decisions made by people you can trust, we invite you to join the many in Central Maine who are proud to say "That's my Bank!"

Kennebec Savings Bank

Augusta 622-5801 Waterville 872-5563 Winthrop 377-5801 Gardiner 588-5801

www.kennebecsavings.com



Sprague & Curtis

Real Estate

spragueandcurtis.com

6 2 3 . 1 1 2 3

75 Western Ave. • Augusta, ME



BELGRADE--Energy efficient & well maintained home-situated on 3 ac. Oak cabinetry, fireplace, cozy sunroom, DR, 2BR, FR in bsmt, 1st flr laundry, newer siding & roof. Large deck w/awning overlooking private yard, blueberry & raspberry bushes, 2 car garage. **MLS#1051733 \$144,900**



BELGRADE-PRICE REDUCED-LONG POND ACCESS-- This 3 BR, 2 BA home is much larger than it appears. Amenities include a spacious kitchen, fireplace, pellet stove, family room. Deck, hot tub, walking distance to stores/restaurants. **MLS#1024960 \$149,900**



FAYETTE-PARKER POND-- Western Exposure, sandy, gradual entry waterfront. Peaceful screen porch, open kitchen/LR, 2 BR down, sleeping loft up. Newer roof, windows and siding. Fully insulated, newer posts and pads. **MLS#1034412 \$229,900**



PALERMO-SHEEPSKOT LAKE-- Enjoy the comforts of this 3 season, 3 bedroom lakeside cottage. Western Exposure, fireplace, Propane heat, pine interior, wood floors, great water views. Sandy shore frontage, shoremaster dock. Most furniture remains. Shed for storage. **MLS#1033870 \$239,900**



READFIELD-- The Capt. Dudley Haines home, circa 1790 w/historic 1830's wall murals. Classic 4BR/2B center hall colonial on pretty 4.8 acre lot. Period features, renovated kitchen/BA, beautiful flrs/woodwork. Peaceful location, views, detached sauna, garage. **MLS#1004195 \$275,000**



AUGUSTA-TOGUS POND-- Togus Pond Cedar Log Home-190' waterfront, lrg lot & lawn area, beautiful setting. Stunning cathedral LR w/pellet stove, spacious kitchen, loft MBR, lrg front deck, daylight lower level. Convenient to I-95, easily accessible, special. **MLS#1051955 \$249,900**



AUGUSTA-THREE CORNERED POND-- Enjoy Year-round waterfront living in rural Augusta- 1990 Cape 2-3BR,2BA on 2 Acres. Great screened porch lakeside, wooded setting. Master bedroom suite w/ jacuzzi.Full walkout lower level.Well maintained! Bass fishing boat/Dock incl. **MLS#979050 \$200,000**



MANCHESTER-COBBOSSÉE LAKE-- Acreage & water frontage! Lovely 3-4BR Antique Cape on 59 acres. Great location, pretty setting, lots of charm. In an area of upscale homes. Fireplace, deck porch & attached shed/small barn. **MLS#1013620 \$399,000**



MANCHESTER-COBBOSSÉE LAKE-- Extensively renovated 1807 Cape/Farmhouse on 7+acres w/ROW to Cobbossée Lake. Beautiful setting, lots of updates. 3BR, 2.5BA, many fireplaces, encl front porch. Lots of charm. 20'x36' 2 story garage/barn w/ full 2nd floor. **MLS#1056262 \$319,000**



...Continued from page 26

these viruses and protects our canine friends from these contributors to kennel cough complex.

Not to be confused with kennel cough, Canine Influenza virus is a relatively new viral illness which can cause a nasty cough; it is becoming a more serious problem in certain parts of the country. First discovered in racing Greyhounds in Florida in 2004, Canine Influenza can cause severe pneumonia in this breed, with an uncontrollable accumulation of blood in the lungs that leads to death in many Greyhounds. We have found that in other breeds, although it causes a very bad cough (worse than kennel cough) and sometimes pneumonia, it is not as deadly as once feared if caught early and treated appropriately with supportive care. It is a very contagious disease however, and part of its success as a virus is due to the fact that dogs shed it most actively before they actually show signs of illness. We are not able to quarantine sick dogs prior to their spreading it, because we don't know which are sick before it is too late. Fortunately a vaccine for Canine Influenza has been developed and is widely available. It is recommended for dogs who travel to high risk areas where they may be in contact with other dogs, and in all Greyhounds.

As with all vaccines, it is important to consider risk factors for these and other diseases when tailoring a vaccine schedule for your dog. Not all vaccines are necessary for all dogs; consult with your vet about an appropriate vaccination strategy for your best friend.



Business

What began as a grassroots project to revive the struggling Skowhegan economy by bringing back local grain production and artisan bread baking has grown into an annual event that brings hundreds of farmers, millers, novice and professional bakers, bread-lovers, and wood-fired oven enthusiasts to central Maine each July.

Now in its sixth year, the Kneading Conference is the model of regional enterprise that connects the local grain farmer to the miller, the baker, and the consumer. With goals to promote the return of Maine to a grain producing state, the Artisan Bread Fair and the Kneading Conference also show the employment possibilities in small grain farming and artisan baking.

The concept of grain-to-bread answers a universal consumer concern about processed foods and underscores the growing interest in greater hands-on involvement with food, an interest made evident by the attendance at the conference and Bread Fair by people from around Maine and the United States, Canada, Europe and New Zealand.

At the Kneading Conference, discussions and workshops by industry experts cover such topics as heirloom grains, milling techniques, soil fertility, the philosophy of baking, bakery entrepreneurship, earth and brick oven construction, and production and home baking practices.

The Artisan Bread Fair is an opportunity for

Bread Becomes Big Business



attendees to sample Maine-made breads, pastries and pizza, to talk to professional bakers, and to purchase everything to do with bread-baking, including books, new and antique tools, kitchen equipment, and complementary food.

The 2012 Kneading Conference will take place at the Skowhegan State Fairgrounds on Thursday, July 26 and Friday, July 27, followed by the Artisan Bread Fair on Saturday, July 28.

For more information contact www.heartof-maine.org.



We'll come to you!

Our local loan officers will make the mortgage process convenient for you.

10-Year Fixed
Mortgage Rate
2.990%
0 Points
3.166% APR*

Other rates and terms
also available.

**Local mortgage services
right in your own backyard.**

* Annual Percentage Rate (APR) is based on a \$50,000.00 loan with 120 monthly payments of \$9,663 per \$1000.00 borrowed. The payment per \$1000.00 quoted does not include amounts for taxes and/or insurance premiums, if applicable. The actual payment obligation will be greater. Rates are effective as of June 1, 2012 and are subject to change without notice. APR is based on a 20% downpayment with no points. Eligible properties include 1-4 family owner occupied primary residences and second homes. Estimated range of closing costs is \$1000.00 to \$2500.00. Offer subject to credit approval. Other restrictions may apply.



**Skowhegan
Savings**

Integrity. Trust. Community.

skowsavings.com 800.303.9511



**Golden Pond
Wealth Management**

Big Box Store or Village Boutique?

For all the reasons you live and vacation in Maine **why not move your investments from Wall Street to "Maine Street"?**

Providing independent, conflict-free financial advice and investment management to Maine families and non-profit institutions, since 1996.



www.GoldenPondWealth.com

129 Silver Street * Waterville, ME 04901

(207) 873-2200 * info@goldenpondwealth.com

Securities offered through LPL Financial, Member FINRA/SIPC



Your own little island of swimming FUN.

Improve your lake shore living experience with a ShoreMaster Swim Raft. Kids and adults alike will enjoy years of fun and treasured memories.

LARGEST SHOREMASTER DISTRIBUTOR in the COUNTRY

SWIM RAFTS

90" x 114" Poly Swim Raft – Poly Deck - Yellow or Gray	\$999
8'x8' Aluminum Swim Raft Cedar Deck	\$1,399
8'x8' Aluminum Swim Raft Aluminum Deck	\$1,779
8'x8' Aluminum Swim Raft White Aluminum	\$1,839
Rip Raft – Tan or Orange	\$749

Ladder sold separately

3 step pivot ladder \$259
4 step pivot ladder \$299
5 step pivot ladder \$369
Nylon Rope Ladder (Rip Raft only) \$51
2 step Rip Raft Ladder \$189

Call today for a 52-page Product Planning Guide & Price List or visit us online at www.hammondlumber.com/shoremaster

Hammond Lumber Company

Toll-free 1-866-HAMMOND

AUBURN • BANGOR • BELGRADE
BOOTHBAY HARBOR • BRUNSWICK
DAMARISCOTTA • FAIRFIELD • FARMINGTON
GREENVILLE • PEMAQUID
PORTLAND • SKOWHEGAN

Lakepoint

REAL ESTATE

207.495.3700

221 Main St.,
Belgrade Lakes, ME 04918

www.belgradelakepoint.com

BBELGRADE ~ GREAT POND, HOYT ISLAND
~ Secluded 5.4 acre lot with beautiful log sided chalet. Includes 2 BR and large loft, Kit, LR and BA with full septic. Enjoy the sunsets from the dock or wrap around deck. 200' of private frontage. Great Fishing! (1053835) **\$249,000**

CHESTERTVILLE ~ PARKER POND ~ Enjoy the best of both worlds with this 10 acre parcel of land w/ the driveway in and lot cleared for your home or cabin and then just a walk away to your deeded shared access with docks and your boat waiting for you on a slip! Bring your plans today! (1047259) **\$74,900**

BELGRADE ~ GREAT POND, NEW PRICE ~ Great Price! Wonderful waterfront, 4 BR, 2 BA cape close to Belgrade Lakes Village and all the amenities w/ sandy 150' +/- of frontage. Large, open living area. Nice level yard with views up the lake of Great Pond. A MUST SEE! (1005527) **\$359,000**

BELGRADE ~ GREAT POND, NEW PRICE ~ Very cute 3 BR, 1 BA cottage with a wonderful sandy waterfront beach and fabulous sunsets. This cottage has a great back lawn for lots of fun and sits approx. 20' from Great Pond. Location Location! (1019023) **\$280,000**

ROME ~ NEW PRICE ~ Beautiful year round home, 200' from deeded access on Long pond w/ gorgeous beach plus dock/boating area. Energy efficient property w/ knotty pine interior, 2 BR, loft & brick hearth. Attach garage, lg deck/private back. Owner offer up to \$1000 toward closing. (1030555) **\$124,500**

BELGRADE ~ GREAT POND, Shared Access ~ Wonderful Maine cottage located just feet away from Great Pond. Wonderful views, lg private dock, 2 LG BR, w/ lg sleeping loft. 2 BA, fully furnished. Beautiful screen porch to watch the sunsets. Brick hearth with gas stove. (1055628) **\$319,000**

BELGRADE ~ LONG POND ~ 3 BR, 2 BA home w/ 2 car garage. Western exposure provides wonderful views and beautiful sunsets. Large LR and 1st fl. Master BR, screen porch and deck. Short walk to Belgrade Lakes Village. Dock and boat lift. (1007123) **\$440,000**

BELGRADE ~ GREAT POND ~ Charming cottage w/ outstanding views, flat yard, close to water's edge. Sunsets, shallow swim area, fieldstone fireplace, private, renovated and updated over the last 10 yrs. Great location and big vistas. (1033546) **\$349,000**

ROME ~ GREAT POND ~ Private 3 BR, 2.5 BA year-round home, sits at water's edge w/ 273' water frontage, 2 acres, FP, LR, spacious deck, expansive views. Country kitchen, easy access to Jamaica Pt. Rd. (1050397) **\$545,000**



THERE'S NO TIME LIKE SUMMER TO VISIT GRANITE HILL ESTATES

Whether it's June's Annual Garden Tour or August's Annual Big Band Bash – whether it's our ongoing Art For Life series or the lush beauty of our campus – everything about Granite Hill is more vibrant and alive than ever in summer.

Granite Hill Estates is the Kennebec Valley's premiere continuing care retirement community. It's a place in which to enjoy the freedom and comfort you've earned, to have all the independence you want, to get all the amenities you deserve, and to start all the living you finally have time for.

TO LEARN MORE OR SCHEDULE A TOUR:
CALL STEVE ROY, TOLL FREE, 888-321-1119 OR
E-MAIL STEVEN.ROY@GRANITEHILLESTATES.COM.
60 BALSAM DRIVE, HALLOWELL, ME 04347
© 2012 GRANITE HILL ESTATES

**GRANITE
HILL
ESTATES**

GRANITEHILLESTATES.COM

PICK THREE. SAVE TWENTY.



**Take
20%
OFF**

any three items with this ad

Shoes (sizes 2A-6E), athletic apparel and accessories for the whole family!

***Valid with this coupon only, through September 30, 2012**
*Only valid at the new balance factory store
All shoes **FACTORY SECONDS/DISCONTINUED** styles. Discounts off factory store prices.
Cannot apply to prior sales, sale prices, or other offers. One coupon per purchase.

SKOWHEGAN, ME
12 Walnut St.
1-877-623-7867



achieve new balance™

OXFORD, ME
19 Industrial Drive
1-877-623-7867



EQUAL HOUSING OPPORTUNITY

A CONTINUING CARE RETIREMENT COMMUNITY

For first quality merchandise, call 1800.253.SHOE.
Sorry, above offers not valid at dealer stores.

